



PORTFOLIO

July 2013

The Annual Philadelphia Sketch Club Photography Exhibition

The annual Philadelphia Sketch Club photography exhibition will open on July 5th and run through July 20th.

Reception: Sunday July 7, 2-4 pm

Gallery Hours: Wednesday, Friday, Saturday and Sunday; 1 – 5 PM



Inside “The Portfolio”:

Kenneth Deprez “My Everyday”: p. 2

Exhibitions: p. 2

Absolutely Abstract 2013: p. 3

Past Exhibitions: p. 3

Notices from Our Members: p. 5

Art Natters: p. 6

“Mad Men ... of Art”: p. 8

Send your member news, announcements
and corrections to pscpportfolio@gmail.com

The deadline for ALL submissions is 1 week
before the end of the month.

Members Summer Garden Party August 3, 2013

On Saturday, August 3, 2013, the Philadelphia Sketch Club will host a Summer Garden Party for Sketch Club members and their guests. The festivities begin at 5 pm in the garden. We will have a sketching contest based on a theme to be announced that evening, so be sure to bring your sketchbooks. Those of you who are musicians are encouraged to bring your instruments too.

This is a free BYOB, pot luck event for members and their guests. Please bring food and drink to share. (Plates, cups, utensils, etc. available.) No need to RSVP. Any questions, please call 215-545-9298 or email executivedirector@sketchclub.org. We look forward to seeing everyone on August 3!

Kenneth Deprez Show “My Everyday” in the Stewart Room: July 1 – 27

From Kenneth: “My work explores time and place through photography and painting. I am interested in image making that reveals my experience in the everyday, and extends the process of making to the everyday. In July I will be showing for the first time a body of work that consists of a gridded arrangement of 12 x 12” photo-based paintings on my daily travels around Philadelphia. I will also debut an ongoing photo-journalistic project of my wife’s family farm (The Hayford Farm, of Pittston, Maine). I hope to see you in July and please come out for the opening reception on the 7th, at the same time as our PHOTOgraphy 2013 opening.”



Exhibitions at the Sketch Club’s Upstairs Gallery for 2013

- **Photography Exhibition:** July 5 – 20
- **Absolutely Abstract Exhibition:** August 9 – 24
- **1st Exhibition of Large Oil Paintings:** September 13 – 28

Exhibitions in the Stewart Room for 2013

- **Kenneth Deprez:** July 1 – 27
- **Patricia Ilves-Corressel:** August 1 – 31
- **Donor Exhibition:** September 1 – 28
- **Bill Patterson (North Side):** October 1 – 30
- **Sheldon Strober (South Side):** October 1 – 30
- **Annual Volunteer Leaders Exhibition:** November 1 – 30
- **Annual Exhibition Chair Exhibition:** December 1 – 30

Attention: Construction on South Camac St: When driving to deliver or pick up art work or to visit the Club, please be aware that there is construction on the lower end of S. Camac Street near Spruce Street that often closes the street and that will it will most likely continue into late 2013.

Upcoming Exhibitions

Absolutely Abstract 2013

An open juried exhibition for artists, for up to 2 works in any medium.

Dropoff for jury: Friday July 26, Saturday July 27, 1-5 pm

Show dates: August 9 to August 24, 2013

Reception: August 11, 2013 from 2 to 4 pm.

Prospectus included in this newsletter



Past Exhibitions

The following article appeared in Montgomery Media on Saturday, June 08, 2013. Reprinted by permission.

New works from an old club grace MCCC's gallery walls

by Tara Lynn Johnson, Correspondent for Montgomery Media

<http://www.montgomerynews.com/articles/2013/06/08/entertainment/doc51ae2f1910b6e686712486.txt>

Artists have gathered and exhibited their works at the Philadelphia Sketch Club since the 19th century. And now, members from the 21st century will display some of their recent work at Montgomery County Community College (MCCC) in the exhibit "The Philadelphia Sketch Club: Continuing 150 Years of Artistic Excellence." Approximately 100 pieces of art — watercolors, oils, mixed media and photography — will be displayed through June 20.

The college is happy to support the joint venture with the Philadelphia Sketch Club (PSC), one of America's oldest artist clubs (famous members include Thomas Eakins and Thomas Pollock Anshutz). "I felt our mutual visions for the arts are the same," said Holly Cairns, MCCC's galleries director. "We both believe in supporting and nurturing the work of visual artists through exhibitions and we both believe in the understanding that we need to foster the visual arts in an educational setting."

PSC, which boasts more than 200 members, exhibits works monthly, in juried and non-juried shows. This is the first time it has exhibited at MCCC's galleries, which offers much more space than the group's Philadelphia headquarters.

Betz Green, a 14-year PSC member and the MCCC exhibit chairperson, has been an artist since she was little. She has exhibited her work around the region and at juried shows in New York. She said the MCCC show includes a wide variety. "It's such a diverse group," she said. "The show represents a lot of different artists, different mediums, different outlooks and perceptions."

Continued on next page



◀ *'Pot Heads' by Betz Green, an oil on board.*

Green likes to create traditional drawings and paintings, in oil, pencil, charcoal and pastels. For the last year or so, she has been focusing on silverpoint, a method used during the Renaissance and by masters including Michelangelo and Rembrandt. Artists draw on a piece of prepared paper with a piece of silver (or gold, copper or similar metals). They usually create small vignettes, about 8-by-10 or 10-by-12 inches in size.

Green, who grew up in Macungie and lives in Flourtown, likes silverpoint because it isn't used a lot. She learned it as a student at the Tyler School of Art and has taught classes at Woodmere Art Museum. Because the materials used are metals, they tarnish over time—copper takes on a green patina and silver, “Well, you know how silver tarnishes,” she said. Gold does not tarnish, however. The silver turns “this brown, earthy, warm, translucent color,” which she loves, Green said.

Lois Schlachter, an abstract expressionist from Spring Mount, loves the colors she works with, too, and using various abstract forms. “I love handsome, vibrant color,” she said. “My art reflects my love of shapes in space, balance and classical rhythm. I am in love with the line.”

The seven-year PSC member and former co-exhibitions chairperson has two colorful pieces in the show. The first is “In the Toy Box,” which is acrylic and 40-by-32 inches. “It’s a memory of youth and opening the lid to my toy box and finding all of the treasures that would entertain me for hours,” she said. The second is the acrylic “On the Playground,” which is the same size. “There are water slides, soccer balls, basketballs, swing sets,” she said. “This painting reflects my years of work as a recreation director for Fairmount Park.”



'On the Playground' by Lois Schlachter

Schlachter uses art to express herself and more. “As I paint and create, I am interpreting the world around me,” she said.

The world around Green can interfere sometimes with her working on her craft. She spends as much time as possible being creative, but sometimes, she has to focus on the business end of the art world. Sometimes, day-to-day life distracts. No matter what, she always finds a way to lose track of time in her creative way.

“You zone out,” Green said, “and it’s a wonderful space to be in.”

Notices from Our Members

From HV Hawley: The 114th Annual Juried Fellowship of PAFA

Delivery for 114th Fellowship of PAFA juried exhibition will be on July 7th, 2013 at the Hamilton Building at 128 N. Broad St. in Philadelphia from Noon to 5 pm.

The 114th Annual Juried Fellowship of PAFA will be held August 4 to September 9. The prospectus and details are available online at Pafafellowship.org.

From Diane Hark: Plein Air Painting Day in Atlantic City

Diane Hark invites Sketch Club members to come paint the New Jersey Shore for a day. For this informal, free event, just show up at Gardner's Basin in Atlantic City on August 8 at 11 AM. Dinner at Diane and Jerry's (with Jerry's famous frozen margaritas!) follows in Margate. All are welcome. Email dianeharkart@aol.com for more information.

From Pearl Mintzer: F.O.D.C Art Show 2013

Pearl Mintzer writes "Every year, the Friends of the Delaware Canal has an art show. Friends of the Delaware Canal has a large supportive membership. They always come out to buy art and support the friends.

Last year we sold 36 paintings in a weekend. Commission to FODC is 35%. Fund Raiser Art Shows are a Win/Win. The organization makes money. The artists sell their work and are introduced to a buying public. "

The show runs from September 6 – 8, 2013 and entries are accepted from June 1 to June 25th. A flyer with more information is available at the end of this newsletter and the application is available online at www.fodc.org

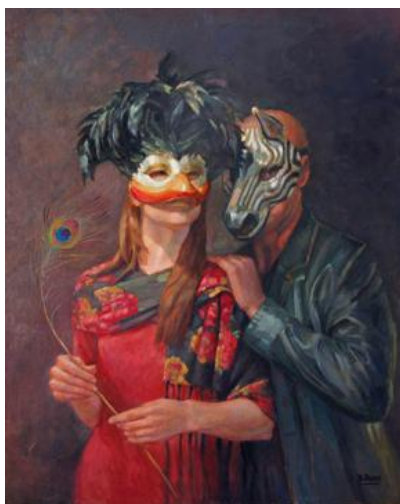
Art Natters: Member News

Brenda L Bechtel has her paintings included in a few shows this month. In Rhode Island, two juried exhibitions; South County Art Association's "All Media Open Juried I" includes "Whimsical Baler of the Mills", Oil and Portsmouth Artists Guild has included Brenda's Oil on linen, "Red Lily Pond ~ Turtle Soup" in "Imagine Green". On Cape Cod, two juried exhibitions include Brenda's paintings. The Post Office Gallery in North Truro features two of Brenda's watercolours; "Provincetown Window ~ A Watchful Eye" and "Commercial Street ~ Provincetown". The Cape Cod Art Association features Brenda's Oil on Linen "Tea with H.F. at Three ~ Winterthur" in "The National, 2013".

"Red Lily Pond ~ Turtle Soup" Oil on linen by Brenda L. Bechtel ►



Brenda is happy to announce that she has been honored with Elected status in the Academic Artists Association where she has a watercolour included in "The 63rd Annual National Exhibition of Contemporary Realism". Details and images may be found at www.angelfire.com/art2/brookside



Artsbridge's "19th Annual Open Juried Show" Overall Best in Show award went to **Dot Bunn** for her oil painting "Bird Lady".

The show was held at The Gallery at New Hope Arts Center in New Hope, PA.

Artsbridge is a non-profit organization serving the Delaware River Valley region.

◀ "Bird Lady" by Dot Bunn, received Overall Best in Show award at Artsbridge's 19th Annual Open Juried Show.

Jeff Gola has two paintings in the group summer show "Just in Time" at Fischbach Gallery, 210 Eleventh Avenue at 25th Street in the Chelsea Section of New York City. The show runs from July 2 to August 16, 2013 with summer hours of Monday through Friday, 10 – 5 pm.

"House near Buddtown", egg tempera on panel, 10" x 10" by Jeff Gola ►



Art Natters: Member News (continued)

Diane Hark writes "Here is a new painting called "Village Walk" going to the gallery opening in LBI for the summer.... "Fountains at Logan Circle" at William Ris gallery in Stone Harbor through summer, and "Sunshine in the Park" at Langman Gallery in Willow Grove, PA.



"Village Walk", "Fountains at Logan Circle" and "Sunshine in the Park" by Diane Hark

John Schmiechen and his partner Theodore Lewis recently completed their new home in the Passyunk Square neighborhood, a booming new housing, restaurant and artist area. The new home includes a studio and a gallery for John's works. His recent donations to the Passyunk Square Civic Association's Gala brought in the most proceeds of the many artists participating. His painting "Carman's Country Kitchen", of a neighborhood icon, captured the most attention of the evening with enthusiastic bidding.

John is currently exhibiting at the Penn National Bank and will open an exhibit at Gavin's Cafe later this summer. John's website is www.PhiladelphiaCityscapes.com



"Carman's Country Kitchen" oil on canvas, 16" x 20" by John Schmiechen

Six paintings by **Bill Scott** are included in the exhibition 'Creative Hand, Discerning Heart: Form, Rhythm, Song' at the James A. Michener Art Museum through September 29.

A John Thornton video was commissioned by the Michener and can be seen on YouTube:

<http://www.youtube.com/watch?v=KCQIL4Z79A&feature=youtu.be>

See the Michener Museum website for additional information:

<http://www.michenermuseum.org/exhibition/creative-hand-discerning-heart-form-rhythm-song>

Lois Schlachter is currently exhibiting in a show of Philadelphia Sketch Club members at Montgomery County Community College in Blue Bell, Artist Equity 64th Members Juried Exhibition at Widener University and Perkiomen Valley Art Center members show at Community Music School. Lois was juried into Lancaster County Art Association National Juried Exhibition, received an award at the 78th Annual Spring Juried Exhibition of the Lehigh Art Alliance and an award at the 85th International Annual Juried Exhibition of the Art Association of Harrisburg.

The Philadelphia Sketch Club

235 S Camac Street
Philadelphia, PA 19107
(215) 545-9298

<http://sketchclub.org/>

executivedirector@sketchclub.org

Officers:

President: Richard Harrington
Vice President: Kenneth Deprez
Secretary: Christina Valente
Treasurer: William Patterson

Board of Directors:

Frances Carter
Melvin Chappell
Faad Ghoraihi
Chuck Hilpl
Pearl Mintzer
Doris Peltzman
Richard Ranck
Timothy Shickley
Ken Weiner
Joe Winter

"The Portfolio": The newsletter of the Philadelphia Sketch Club is published monthly.

Editor: Jeff Gola

Send your member news, announcements and corrections to pscportfolio@gmail.com. The due date for all materials is one week before the end of the month.

The 153rd Sketch Club Gala: "Mad Men... of Art"

Save the Date! Saturday, October 5, 2013, 7 pm to Midnight

The Philadelphia Sketch Club's 153rd Anniversary Gala honoring Tony Auth, Alex Kanevsky & Bill Scott.

Tickets:

Patron: \$150 (\$125 is tax deductible)
Art Lover: \$100 (\$75 is tax deductible)
Artist (Sketch Club members only): \$60
(\$35 is tax deductible)



The first 150 ticket purchasers will receive a two volume set of books on the Philadelphia artist and Sketch Club Member Peter Moran entitled Domestic and Wild: Peter Moran's Images of America by David Gilmore Wright (retail value \$120 – limited one per household).

Cocktails, Buffet, Dancing, Madness - 1960's "Mad Men" attire is optional. Tickets are available now by calling 215-545-9298 or by sending a check payable to the Philadelphia Sketch Club, 235 S. Camac St., Philadelphia, PA 19107



Absolutely Abstract 2013

August 9 to August 24, 2013

The Philadelphia Sketch Club
235 South Camac St.
(between 12th & 13th
and Locust & Spruce)
Philadelphia, PA
19107

Delivery: Hand delivery only Friday, July 26, and Saturday, July 27, 2013, 1-5 p.m. at the Club (235 S. Camac St., Phila., PA).

Entry Fees:

Active PSC members: \$12 for one piece or \$20 for two pieces.
All others: \$15 for one piece or \$25 for two pieces.

Pickup:

Unaccepted work:

Saturday, August 3, and Sunday, August 4, 2013, 1-5 p.m.
at PSC & during reception on August 11, 2013.

Accepted work:

Sunday, August 25, 1 to 5 p.m. and Monday, August 26, 2013, 1-5 p.m. at PSC.

Reception: All patrons are invited to the opening reception on Sunday, August 11, 2013 from 2-4 p.m. Awards will be presented at 3 p.m.

The Philadelphia Sketch Club

235 South Camac Street (between 12th & 13th and Locust & Spruce)
Philadelphia, PA 19107

Exhibition Chairs:

Stephen Franczak 215-300-9192 (or s122@sketchclub.org) (Chair)
Fand Ghorvishi (co-chair)

Juror:

Bill Scott is an abstract painter and printmaker. He is represented by Hollis Taggart Galleries, New York, where he has had five solo exhibitions. His work has been included in numerous group shows. His works are in a number of public collections, including the British Museum, Cleveland Museum of Art, Philadelphia Museum of Art and Woodmere Art Museum. Since 1999 he has made intaglio prints with the C. R. Ettinger Studio, and has made commissioned etchings for the Print Club of Cleveland as well as the Print Center and Fleischer Art Memorial in Philadelphia. Scott is a critic at PAFA in both the Certificate/BFA and Continuing Education Programs.

Prizes: The Juror will select works for exhibition and award prizes.

Works Eligible: This is an open juried competition for 2 works per artist in any medium. Works must be suitable for hanging. All submitted work must be offered for sale during the exhibition. No POR or NFS. Maximum framed size 40x40 inches. All work must be wired and ready for hanging. No clip frames. Non-suitable pieces will be rejected.

Liability: All submitted work will be handled with care, however the Philadelphia Sketch Club assumes no liability for loss or damage.

Sales: The gallery will be open on Wednesdays, Fridays, Saturdays and Sundays from 1:00 – 5:00 p.m. for the duration of the exhibition. A sales attendant will be on duty. Prices should include a 25% commission for the Philadelphia Sketch Club.

Absolutely Abstract 2013 Attach to back upper right-hand corner of work

Name _____
Street Address _____
City, State & ZIP _____
Telephone & e-mail _____
Title _____
Process _____
Price _____
PSC Staff will assign show # _____

No Post Card Notification Form is required.

Accepted items will be posted on the Philadelphia Sketch Club website, www.sketchclub.org, before the end of Wednesday, July 31, 2013.

If you do not have access to the internet, please bring a stamped self-addressed envelope and we will mail you a listing of the accepted items.

Pick-up times for unaccepted and accepted works are indicated in the Prospectus and on the reverse of this notice.

Absolutely Abstract 2013 Attach to back upper right-hand corner of work

Name _____
Street Address _____
City, State & ZIP _____
Telephone & e-mail _____
Title _____
Process _____
Price _____
PSC Staff will assign show # _____

Receipt

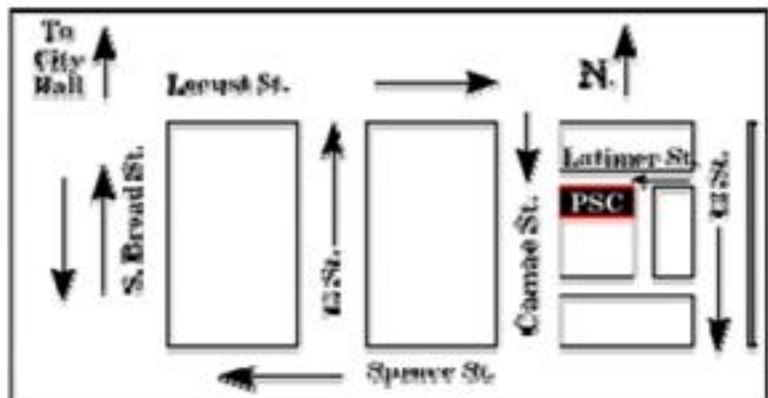
ABSOLUTELY ABSTRACT 2013

Name _____
Street Address _____
City, State & ZIP _____
Show # _____
Show # _____
Received by _____ Date _____



MISSION STATEMENT:

With over 150 years of
 artistic heritage, the
 Philadelphia Sketch Club
 has a mission to provide a
 community for visual
 artists, appreciation of the
 visual arts and visual arts
 education.



IF CAMAC ST. IS BLOCKED, USE LATIMER
 FROM 12TH FOR PICK-UP AND DELIVERIES

ABSOLUTELY ABSTRACT 2013

The Philadelphia Sketch Club
 235 South Camac Street
 (between 12th & 13th and Locust & Spruce)
 Philadelphia, PA 19107
 215-545-9298

Pickup:

Unaccepted work:

Saturday, August 3; Sunday, August 4 (1 to 5
 p.m.); & during reception, Sunday, August 11,
 2013.

Accepted work:

Sunday, August 25, 1 to 5 pm and Monday,
 August 26, 2013, 1-5 p.m. at PSC.

Work not picked up will be stored at owner's risk.
 Works not removed by the scheduled pickup date of the
 show are subject to \$2/day storage fee. After 30 days,
 they become the property of PSC.

REMOTE DROP OFF SITES ARE AVAILABLE AT THE BELOW LOCATIONS USING THE FOLLOWING INSTRUCTIONS:

For Bethlehem, Warrington and Telford, PA, areas call Bill Patterson at 267-664-
 2434 before 7/21/13 for drop-off appointment.

F.O.D.C. ART SHOW 2013

Location: "Rolling Green Barn" Route 202 / Aquetong Road, New Hope, Pa

When: Friday, Sept 6th 6-9 pm Open Reception
Sat. & Sunday Sept 7th & 8th 11 am-7 pm Public Showing

Entry Information:

- Entry Dates Firm: June 1 - 25, 2013
- Artists can enter 2 works and must be for sale.
- Artists must be 18 or older.
- Work must be original and not entered in FODC shows in prior years.
- All media accepted except giclee prints and art available as prints generally seen on internet sites.
- Size Restriction: 50 inches length or width (framed)
- All work to be framed or finished on sides if gallery wrapped.

Online Entries ONLY:

- Digital images in jpg format only.
- No less than 300 dpi or 600 pixels.
- Each file captioned as follows:
Last Name, First Name – Work Title – Medium, Size, Price
example: Smith, James – Bridge Scene – Oil, 15x20, \$500

There is no application form to fill in.

Send your images (attachments) in one email and include:

Your Name, Complete Address, Telephone, and Email address.

Email to : Artentry@comcast.net

Entry Cost: \$30 (maximum of 2 works)

By Check: Made out to: "Friends of the Delaware Canal"

Address: Friends of the Delaware Canal
c/o Susan Taylor
145 S. Main Street
New Hope, Pa 18938
Tel: 215-862-2021

Sales Commission: 35% to benefit the "Friends of the Delaware Canal"

Insurance: Is the responsibility of the artist.

Questions: Contact Chuck Mintzer (cell) 212-307-1077

Drop off and pick up dates to be provided in a later email.



FRIENDS OF THE DELAWARE CANAL

145 S. MAIN ST., NEW HOPE, PA 18938, PHONE: 215-862-2021