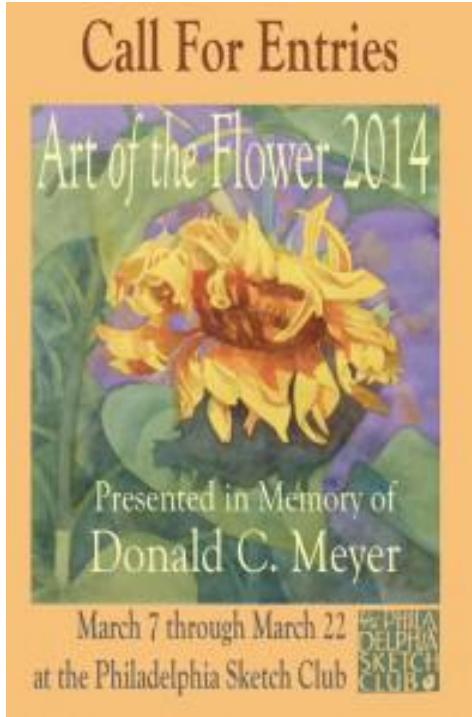




PORTFOLIO

February 2014



2014 PSC Art of Flower Open Juried Show

The **2014 PSC Art of Flower Open Juried Show** is around the corner. Online submission will begin Sat 1/18/14 and end 2/23/14 midnight. Prospectus and information can be found at: <http://sketchclub.org/wp-content/uploads/2014/01/AOF-prospectus-2014-v6.pdf>

- Entry Deadline: **Feb 22, 2014 at midnight**
- Notification sent on Feb 24, 2014 after 1 PM
- Delivery: Fri and Sat 2/28 and 3/1/14 1-5 PM.
- Chair: Rich Harrington (rharrington@sketchclub.org)
- Judges: Brenda Bechtel, Richard Hoffman, and Jo-Ann Osnoe

Top prize will be the **Donald C. Meyer Medal** along with a cash award. Second and Third place will be cash awards. Up to three Honorable Mentions will also be awarded. Jurors will select works for exhibition; prizes are awarded after works are delivered.

Inside "The Portfolio":

Annual High School Art Show: p. 2
Stewart Room – Larry Wood: p. 3
2014 Stewart Room Schedule: p. 3
February Dinner Meeting: p. 4
PSC Online Sales Gallery: p. 4
Art Natters: p. 5
Exhibition Opportunities: p. 7
Art Supplies Discount: p. 7

Send your member news, announcements and corrections to portfolio@sketchclub.org. The deadline for ALL submissions is 1 week before the end of the month.

Don Meyer was a devoted Distinguished Member of the Philadelphia Sketch Club. An accomplished painter, he enthusiastically and tirelessly served the PSC in a myriad of different ways, including serving as Vice President for over 10 years, and acting as Chairman of a host of different exhibitions. A well-known artist in Philadelphia, in 2002 Don was the subject of a one-person exhibition at the Berman Museum on the campus of Ursinus College. In addition, he was the Curator for the exhibition *Surviving Ourselves*, an exhibition of the contemporary masters of the Philadelphia Sketch Club in the permanent collection of the Woodmere Art Museum. Don passed away suddenly on September 11th, 2012. Fortunately, he left us with a large body of videos and podcasts that can be seen and heard at donaldmeyerhome.com. Through the generosity of his wife, Dianne Meyer, we are able to remember him and honor his legacy with the Donald C. Meyer Medal.

30th Annual High School Art Show - School District of Philadelphia at the Philadelphia Sketch Club Main Gallery



Dates: February 1- 23, 2014

Delivery: Invited School District of Philadelphia High School Art Teachers

Wed., Thurs., Fri., January 29,30,31 - 3:30- 6:00PM

Judging For Awards: Mon. Feb.3, 11:00-6:00- Tessie Varthas, Emilee Taylor, & Debra Cooperstein

Reception, Awards & Honors Presentation: Sun, Feb. 23,2014- 2:00 - 4:00PM

◀“Self Portrait”, Charcoal by Froylan Olivares, Gr. 12, Central HS, Juror’s Choice, 2013 PSC HS Art Show

From Dorothy Roschen:
Greetings Members,

Please refer to the previous "Portfolio" issues for details about the judges and this year's 30th Anniversary honoree, Frederick Bacon, the founder of this collaborative show between the Philadelphia Sketch Club and The School District of Philadelphia in 1984.

I will repeat the student award procedure: (1) Make a check of any amount to the Philadelphia Sketch Club with a note in the memo place (lower left): "HS Art Show Award", (2) Email Dorothy Roschen - droschen@me.com or call 215 848 3257 with your name and amount to add your name to the list. (3) Mail or take your check to Philadelphia Sketch Club, 235 S. Camac St. Philadelphia, Pa 19107.

I would like to thank and acknowledge the following donors that have so far contributed and have them recognized by the Sketch Club and the public: Lois Schlachter and Carol Valenti, Lucy Roehm, Deborah and Paul Horsting, Patricia Wilson-Schmid, Idaherma Williams, Diane Hark, Wayne Frank, Katherine Lofaro Firpo, Tom Lyon, Theresa Lee, Su Knoll Horty, Mina Smith- Segal, Dr. Richard Goldberg, William Patterson, the Center for Learning through the Arts, Dorothy Roschen, and John McGahey. There is still time before the judging for awards on Feb. 3rd.

Volunteers are still needed for the delivery times. (See times above.)

For the reception the HS Show committee buys cold finger and toothpick food such as chips, cheese & ham, veggie and fruit platters, non- alcoholic and non-carbonated drinks. Anything similar would be a welcome addition. We do not fire up the stove in the basement kitchen for this show.

Thank you, members, for your constant and wonderful support for this community outreach show. The students benefit from this effort for the rest of their lives.

Dorothy Roschen, Chairperson, HS Art Show, Philadelphia Sketch Club
Deborah Klose, Director of Art Education, Office of Academic Support, School District of Philadelphia

*In the Stewart Room Gallery:
Larry Wood "Drawing on Metals using Chemicals and Abrasives"*



Feb 1-28, 2014. Opening Reception: Sunday Feb 9, 2014 2-4 PM.

Metal artisan **Larry Wood** presents a peculiar technique for drawing imagery directly on metal. No paint, camera, no ink, no pigment, no etching, no printing, no pencil, pen or brush - These images are hand-drawn directly on the surface of metal sheets using patina chemicals and industrial abrasives.

Members and their guests are also welcome to the dinner talk on the technique, which will be held on Friday, Feb. 14 at 6:15 pm at PSC.

2014 Stewart Room Exhibitions

February 1 – 28, 2014	Larry Wood (East and West Side)	Reception: Feb. 9, 2-4 PM
March 1 – 30, 2014	Alice Chung (East Side) Faad Ghoraishi (West Side)	Reception: Mar. 9, 2-4 PM
April 1-29, 2014	Chuck Hilpl (East and West Side)	Reception: April 6, 2-4 PM
May 1-31, 2014	1st PSC Invitational Artist Show (East and West Side: Artist TBD)	Reception: May 5, 2-4 PM
June 1-29, 2014	Pearl Mintzer (East and West Side)	Reception: June 15, 2-4 PM
July 1-27, 2014	Patricia Ilves-Corressel (East Side) Faad Ghoraishi (West Side)	Reception: July 3, 2-4 PM
August 1-31, 2014	Patricia Ilves-Corressel (East Side) Barbara March (West Side)	Reception: Aug. 11, 2-4 PM
September 1-28, 2014	2nd PSC Invitational Artist Show (East and West Side: Artist TBD)	Reception: Sept 15, 2-4 PM
October 1-30, 2014	Thomas J. Foral (East Side) William C. Patterson (West Side)	Reception: Oct. 3, 2-4 PM
November 1-30, 2014	3rd PSC Invitational Artist Show (East and West Side: Artist TBD)	Reception: Nov. 3, 2-4 PM
December 1-30 2014	2014 Annual Volunteers Exhibition (East and West Side)	Reception: Dec. 8, 2-4 PM

To all exhibitors: Please send Faad Ghoraishi (faad@ghoraishi.com) your digital posters one month prior to your show so we can advertise it to our mailing list. We recommend you arrange your opening reception to coincide with any major exhibition reception for that month in the main gallery. Also, please send an image of your work and a short bio or artist's statement to Jeff Gola (portfolio@sketchclub.com) for inclusion in the newsletter.

February Dinner Meeting

Our next Members' Dinner Meeting is scheduled for Friday, February 14, 2014. The schedule is:

5:15 PM Social Period Begins

6:15 PM Speaker – Larry Wood on "Drawing on Metals using Chemicals and Abrasives"

7:00 PM Dinner

The Menu:

- Baked Ham with Pineapple Sauce
- Baked Stuffed Potatoes
- Pasta Primavera
- Caesar Salad
- Assorted Pies

Please RSVP by Wednesday, February 12th to executivedirector@sketchclub.org or by calling 215-545-9298 and leaving a message.

PSC Online Sales Gallery

The PSC Online Sales Gallery is growing. We encourage all of our members to enter their works, artist statements and website links on our online **PSC Sales Gallery**. PSC will advertise the gallery to all of our patrons and mailing list on a routine basis. Also, enjoy comments posted by members and art lovers about your work on this site.

You can submit up to 200 works for sales at minimal cost. We have modified pricing in 2014 too: **\$10 for 8 works and \$2 for any additional works**. You can re-use the \$10 for 8 option as many times as you wish during the year. The sales commission is also kept low at 15% to help you sell. The gallery will remain online for ONE year till December 2014.

The categories include: **Oil, Acrylic, Water Color, Etching, Digital, Egg Tempera, Sculpture, Jewelry, Clothing, others**. You may also sell any reproductions of your works in any format, such as postcards, Giclée, prints, t-shirts, etc.

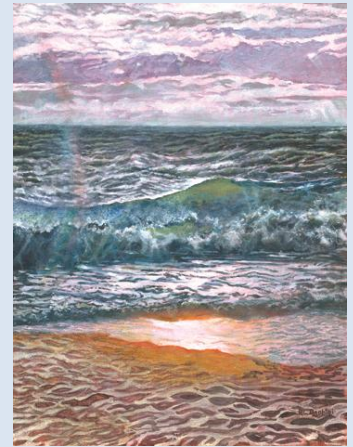
View the sales gallery on our PSC website at <http://sketchclub.org/psc-members-online-gallery/#gallery>

You can enter your works on this page too. See the link on the page.

You can submit your works at anytime, and as many times as you wish, within the one year the gallery is online.

Art Natters: Member News

Brenda L Bechtel is a featured Artist in the Provincetown Art Association and Museum 2014 Member Exhibition. "The Ocean Sings to my Soul" will be on view and for sale through April 27 with an opening gala January 31. Rhode Island Watercolor Society includes four of Brenda's paintings in the New Artist and Signature Member Exhibition through February 6. Details at www.Angelfire.com/Art2/Brookside



Richard E. Goldberg (oil paintings) will be joined by Howard Schatz (photographer) and J. Kenneth Leap (stained glass artist) in exhibiting their works at "In a Relationship: Art, Science, and Medicine" at The James A. Michener Art Museum in Doylestown, PA. The exhibition will be held from February 8 until April 13, 2014. A symposium will be held on Saturday, April 5th. The public health problem of brain injury will be highlighted during the symposium. Prominent speakers from the medical, scientific and artistic communities will participate.



Doris Peltzman will be exhibiting at Artists House Gallery, 57 North Second Street, Philadelphia, in February's Landscape Exhibition. The opening reception will be held First Friday, February 7, 2014 with a "Meet the Artist" reception on Sunday, February 9.

Pete Quarracino writes that he is included in 2 shows , and "... yes, the artist receptions are on the same night":

Malvern Retreat House Art Show
 315 S. Warren Ave, Malvern PA (484-321-2562)
 Jan. 29 to Feb. 2, 2014, Artist Reception Jan.31

Academy of Notre Dame 41st Fine Art Show
 560 Sproul Rd ., Villanova, PA, (610)971-1630
 Jan. 31 to Feb. 7, 2014, Artist Reception (Tickets Required) Jan.31, 2014

Art Natters: continued

Richard Ranck's solo show of paint and wood continues at the Richard Rosenfeld Gallery in Philadelphia throughout the month of February.

Deborah Riccardi will be exhibiting "Leader, Papua New Guinea", oil on canvas, 43"x 63" in the Montgomery County Community College Annual "Art Faculty and Invited Alumni Show" Mixed Media, Show Dates: Tuesday, January 21-Friday, February 14, 2014. There will be a "Meet the Artists" Reception on Sunday, February 2, 2014, 1-3 p.m.

Idaherma Williams has a new book: "Idaherma: Joy in Watercolor" which is 64 pages in full color. The book was reviewed on "Art Near and Far" on radio station WWFM by Dr Burt Wasserman.

Exhibition Opportunities

Remember to visit the PSC website routinely to see all the opportunities for showing your works at PSC and around the region. Go to "Exhibition" and "Art Activities Around Town" at www.sketchclub.org.

Let us also hear from you if you are aware of other shows or important events. Send us an email at info@sketchclub.org.

Do you wish to enter open juror shows in our area or nationwide?

The link below shows multiple open juror shows in our area and nationwide on a map. This link is a free service from entrythingy.com. This is the system we use in our online submissions.

Enjoy! and remember to visit the PSC website to see more opportunities for showing your works. Go to "Exhibition" and "Art Activities Around Town" at www.sketchclub.org. Lets know if you are aware of other open juror shows. Send us email at exhibitions@sketchclub.org.

http://www.entrythingy.com/forartists_map

Dick Blick Discount for PSC Members

Did you know that you can help support your club when making art material purchases?

PSC can receive up to 10% credit for purchases made from Dick Blick Art Materials via the links at www.sketchclub.org. You may still use any discount coupons you may have.

2014 PSC Main Gallery Exhibition Schedule

<p>2014 Annual Philadelphia School District High School Student Art Exhibition: Feb 1 – 23, 2014 Chair: Dorothy Roschen Drop-Off: Jan 29-31, 2014 Jurying: Feb 2, 2014 Reception: Feb 23, 2014 2-4 PM Pickup: Feb 23, 2014 after 4 PM</p>	<p>2014 PHOTography Show : July 18 to Aug. 9, 2014 Chair: Melvin A. Chappell Drop-off: July 11-12, 2014 Jurying: July 13, 2014 Reception: July 20, 2014 - 2-4 PM Pickup unaccepted work: July 18-19, 2014 Pickup accepted works: Aug 10-11, 2014</p>
<p>2014 Art of the Flower: Mar 7 – 22, 2014 Chair: Rich Harrington Drop-off: Feb 28 – Mar 1, 2014 Jurying: Mar 2, 2014 Reception: Mar 9, 2014 - 2-4 PM Pickup unaccepted works: Mar 7-8, 2014 Pickup accepted works: Mar 23-24, 2014</p>	<p>2014 Absolutely Abstract : Aug 22 to Sep 13, 2014 Chair: Steve Iwanczuk Drop-off: Aug 15,-16, 2014 Jury: Aug 17, 2014 Reception: Aug 24, 2014 - 2-4 PM Pickup unaccepted works: Aug 22-23, 2014 Pickup accepted works: Sep 14-15, 2014</p>
<p>151st Exhibition of Small Oil Paintings: April 4-26, 2014 Chair: Bill Patterson, Co-chair: Joe Winter Drop-off: Mar 28-29, 2014 Jurying: Mar 30, 2104 Reception: Apr 6, 2014 - 2-4 PM Pickup unaccepted works: Apr 4-5, 2014 Pickup accepted works: April 27-28, 2014</p>	<p>2nd Annual Large Format Show: Sept. 26 to Oct. 18, 2014 Chair: Faad Ghoraishi Online entries only Drop-off: Sep 19-20, 2014 Jury: Sept. 21, 2014 Reception: Sept. 28, 2014 - 2-4 PM Pickup Accepted works: Oct. 19-20, 2014</p>
<p>PSC Members Benefit Show: May 9 – 31, 2014 Chair: Faad Ghoraishi Drop-off: May 2-3, 2014 No jury, no unaccepted work. PSC Members only. Reception: May 18, 2014 - 2-4 PM Pickup: June 1-2, 2014</p>	<p>Philustration Show: Oct 31 to Nov 15, 2014 Chair: Rich Harrington Online entries only Drop-off: Oct 24-25, 2014 Jury: Oct 26, 2014 Reception: Nov. 2, 2014 - 2-4 PM Pickup All Works: Nov 16-17, 2014</p>
<p>PSC Benefit Show: June 13 – 28, 2014 Chair: Pearl Mintzer Drop-off: June 6-7, 2014 Open Juried Show benefitting Phildanco. Reception: June 15, 2014, 2-4 PM Pickup: Jun 29-30, 2014</p>	<p>Legacy Show: Nov 21 to Dec 13, 2014 Chair: Rich Harrington Drop-off: Nov 14-15, 2014 Reception: Dec. 7, 2014 - 2-4 PM Pickup All Works: Dec. 14-15, 2014</p>



Illustration by Rich Harrington

“The Portfolio”: The newsletter of the Philadelphia Sketch Club is published monthly. Editor: Jeff Gola. **Send your member news, announcements and corrections to portfolio@sketchclub.org. The due date for all materials is one week before the end of the month.**

The Philadelphia Sketch Club

235 S Camac Street
Philadelphia, PA 19107

(215) 545-9298

<http://sketchclub.org/>

executivedirector@sketchclub.org

Officers:

President: Richard Harrington
Vice President: Kenneth Deprez
Secretary: Christina Valente
Treasurer: William Patterson

Board of Directors:

Frances Carter
Melvin Chappell
Faad Ghoraishi
Chuck Hilpl
Pearl Mintzer
Doris Peltzman
Richard Ranck
Timothy Shickley
Ken Weiner
Joe Winter