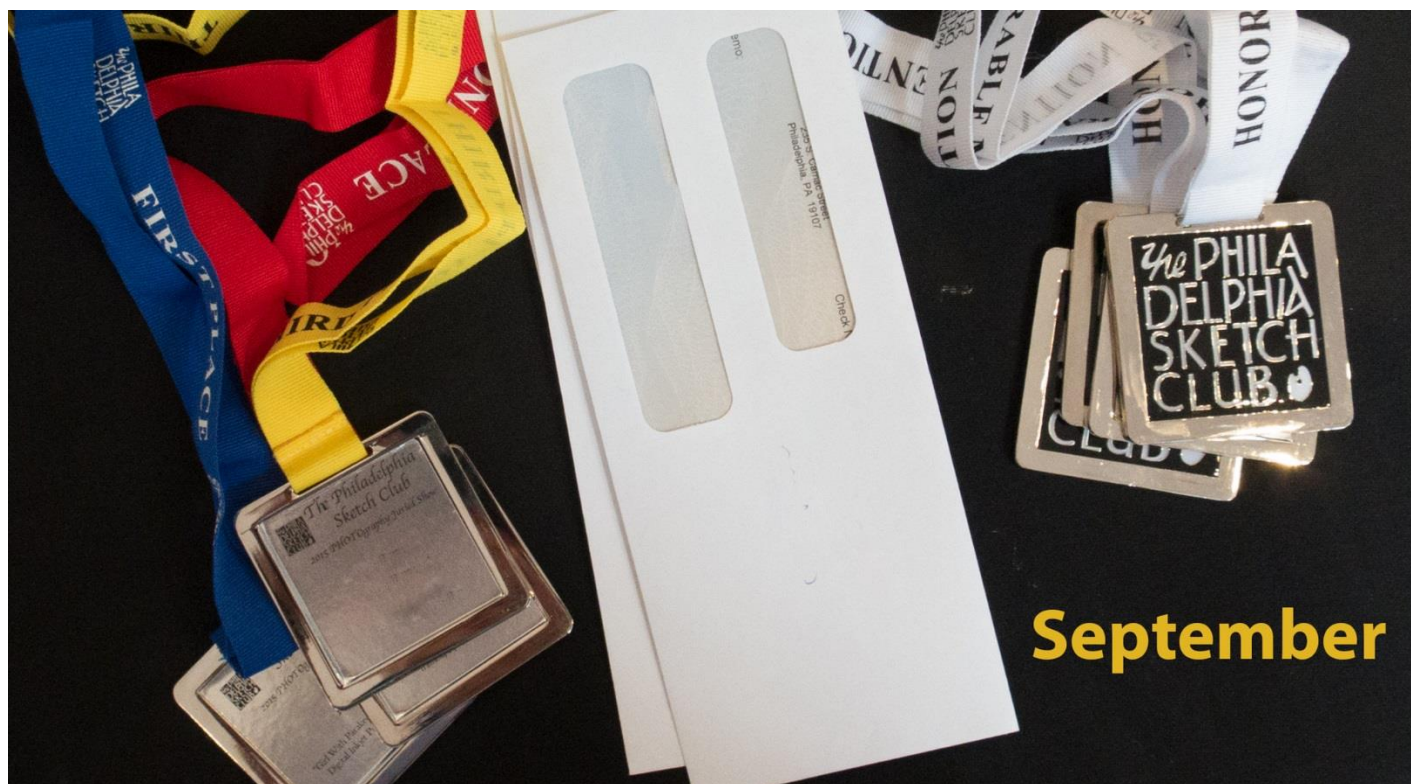


Gallery hours: Wednesday, Friday, Saturday, Sunday: 1 PM to 5 PM

September 2015



September

Ken Weiner

Inside "The Portfolio":

| | |
|--|----|
| Contribute to the Sketch Club | 2 |
| Sketch Club Activities | 2 |
| Dinner Meeting | 4 |
| Focus on: Sketch Club 155th Anniversary Gala | 5 |
| 2015 PSC Main Gallery Schedule | 6 |
| 2015 Stewart Gallery Exhibition Schedule | 7 |
| Art Natters: Member News | 8 |
| Open Workshop Schedule | 15 |
| Call for Volunteers | 16 |

Send your member news, announcements and corrections to portfolio@sketchclub.org. The deadline for ALL submissions is 1 week before the end of the month.

Reminder: It's never too late. You can always renew your membership for 2015!

Price for standard membership is now \$160 for renewal. You may pay online at

<http://sketchclub.org/annual-dues-payment/>

or mail your check to:

The Philadelphia Sketch Club

235 S. Camac St.

Philadelphia, PA 19107

For questions please contact the Gallery

Manager at 215-545-9298 or email:

executivedirector@sketchclub.org

Late Breaking News – See items that were submitted after the publication date. Go to:

<http://sketchclub.org/late-breaking-news/>

The PSC general email is: info@sketchclub

Gallery hours: Wednesday, Friday, Saturday, Sunday: 1 PM to 5 PM

September 2015

Contribute to the Sketch Club

Please consider additional giving tax deductible financial support to the Sketch Club beyond your basic membership dues. Competition for funding for an arts organizations like the Sketch Club is increasingly competitive and total funding for the arts is shrinking. Your additional support will keep the PSC an active support for visual artists in the Metropolitan Philadelphia area.

The Philadelphia Sketch Club is an IRS designated 501(c) (3) non-profit organization which allows your donations to be tax deductible.

Funds from our current Annual Fund Drive will be used to correct the water leakage problem on the rear porch steps and to reframe the large North window.

You can mail your checks to the Sketch Club or visit the [Contribute](#) page of our Website to give online.

Sketch Club Activities

Critique Night

Critique Night will resume monthly meetings on September 16, 2015

Critique Night is held in the Library of the Sketch Club every third Wednesday beginning at 7 PM. Bring work you've finished, work in progress, or just sketches for work you're planning! Photos, digital work, drawings, all mediums are welcome; we can project digital images on a screen for review, so you have the option to show work that may be too big or too heavy to transport to the Club. There is no one individual directing the critique, just your fellow artists and peers sharing thoughts and suggestions about the work displayed. All Club members and guests welcome!



Summer Workshop Schedule

The workshop schedule will continue through the summer as posted with the following exceptions:

No workshops on Monday September 7th.

See the Schedule at: [Workshop Schedule](#)

Gallery hours: Wednesday, Friday, Saturday, Sunday: 1 PM to 5 PM

September 2015

Sketch Club Activities

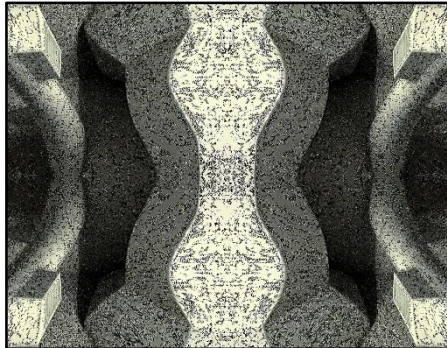
Become a Member of the Philadelphia Sketch Club!

If you're reading this edition of the Portfolio and you're not a member of the PSC, you should consider joining the more than 200 other Philadelphia area artists who have. The PSC is one of the most active visual art venues serving center city Philadelphia. The PSC is a hands-on organization that offers its members the opportunity to participate in all aspects of creating and presenting work to the public. It presents over 20 scheduled group and solo exhibitions annually and offers a wide range of daily workshops. [Get info and an application here.](#)

If you are a member of the PSC, please feel free to share the Portfolio with your artist friends and encourage them to become members.

Philadelphia Sketch Club Photographer's Circle

The Photographer's Circle will resume monthly meetings with a Visual Program on September 10, 2015



The Photographer's Circle at the Philadelphia Sketch Club will be on Summer Break till September 10, 2015. We will begin the new season with a presentation entitled "FIGURE", which will explore and contrast figurative photography classic to expressionist (abstract).

You can contact me anytime at si22@drexel.edu or 215-300-9192 (cell).

Steve Iwanczuk

Photo Circle Monitor and Member of Philadelphia Sketch Club Board of Directors

PSC Volunteer Party

Sunday, September 20th, from 1 to 4pm. Everyone is welcome!

Refreshments and Artist's Society Promised

Come hang out with our corps of Volunteers and Members for the afternoon. Area artists will be picking up their work from the Absolutely Abstract show that afternoon, and the club's stalwart volunteers would love you to join them in making this a social event.

If weather permits, the new "improved" garden will be open for relaxed conversation or landscape sketching.

Please join us and bring a friend!

Gallery hours: Wednesday, Friday, Saturday, Sunday: 1 PM to 5 PM

September 2015

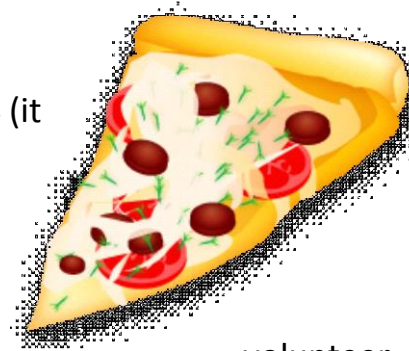
Sketch Club Activities

The Key Circle Group

The Key Circle Group is having a Volunteer party on 9/20 from 1-4 (it coincides with the volunteer activity, but that's part of the idea).

The afternoon is a meet and greet, and an opportunity to talk about how to volunteer and how to enjoy it.

We'll have pizza and munchies and at least 5-8 experienced volunteer folks hanging out and being enthusiastic about others "joining" this band of volunteers.



volunteer

Dinner Meeting

Members' Dinner Meeting Presentation Open to the Public

Friday September 11, 2015

AGENDA

- 5:30- Social Period Begins
- 6:15- Speaker: Bob Bohne
- 7:15- Dinner

DINNER

- Members - \$16
- Guests - \$18

MENU

- Cesar Salad
- Yankee Style Pot Roast
- Oven Roasted Potatoes
- Buttered String Beans
- Cheese Ravioli in Rosa Sauce
- Assorted Cakes



Quarry Silo, Lambertville

Robert Bohne resides in Brookhaven Pa. Born in Chester Pa, he studied at PAFA and the Fleischer Art Memorial. Robert primarily works in graphite and oils, but occasionally works in watercolor, pastel and charcoal. He equally enjoys working from the figure, still life and landscape. Several years ago Robert organized the Plein Air group "Landscape Painting Philadelphia", an Internet meet-up group focusing on painting the landscape directly from nature. In addition to that, he runs the Thursday costume workshop at the Sketch Club and volunteers for the non-profit Sunshine Arts Organization. This year Robert won first place in the first annual Audubon PA Plein Air festival and the Mid Atlantic Plein Air Assoc. award in the Wayne Plein Air national competition. At the dinner meeting, Bohne will present a discussion about Plein Air Painting.

Please RSVP to executivedirector@sketchclub.org or by calling 215-545-9298

Gallery hours: Wednesday, Friday, Saturday, Sunday: 1 PM to 5 PM

September 2015

Focus on: Sketch Club 155th Anniversary Gala

**Come Help Celebrate our 155th Anniversary Gala
and Honor Five Outstanding Members of the Artistic Community!**

Save the Date: Saturday; October 17, 2015; 7:00 PM TO 11:00 PM

Tickets are now available: [Purchase Tickets](#)

See live auction items: [Live Auction](#)

Come help us honor

- Diane Burko,
- Vincent Desiderio,
- Garth Herrick, and
- Barbara and Richard Rosenfeld



The Philadelphia Sketch Club's will hold its 155th Anniversary Gala on this date. Activities will include honoring three great artists, Diane Burko, Vincent Desiderio and Garth Herrick, and Barbara and Richard Rosenfeld who operated the Rosenfeld Gallery in Philadelphia for 40 years. Each will be presented with a Sketch Club Medal for their achievements in the visual arts. Events include the medal presentations, live auction, silent auction, cocktails, hors d'oeuvres, buffet, music and excessive merriment and camaraderie.

SAVE the DATE
OCTOBER 17th, 2015

The Philadelphia Sketch Club's
155th Anniversary Gala

honoring Diane Burko, Vincent Desiderio,
Garth Herrick, and
Richard & Barbara Rosenfeld

7 to 11 PM
Medal Presentations
Live Art Auction
Silent Auction
Cocktails • Buffet • Music

For more information and to buy tickets
visit www.sketchclub.org or call 215-545-9298



More details will be following shortly. Tickets for the event are available to the public and all members. Members are encouraged to make this important fund raising event successful by encouraging their friends to attend. We are also looking for silent auction items, so if you know of a likely donor please let us know. There will also be advertisements sought for the event booklet so if you have a business or friend who has one that might be a willing advertiser, please let us know. The live auction will include artworks by the honorees as well as some donated historical works by past Sketch Club members Ranulph Bye, Domenic DiStefano, John B. Lear, Caesar Ricciardi and Herman Gustav Simon. For information or to let us know how you can help this event be successful, please contact

Gala Chair Bill Patterson at bpatterson2045@comcast.net or cell 267-664-2434.

Tickets are available at the following levels:

- Patron: \$150 (\$125 is tax deductible). Patron names will be listed in the event booklet.
 - Art Lover: \$100 (\$75 is tax deductible).
 - Artist (Sketch Club Members only): \$60 (\$35 is tax deductible).
- Contributions from those who cannot attend are also welcome.

Tickets can be purchased by sending your check to the Philadelphia Sketch Club or on line at

[Purchase Tickets](#) or call: 215-545-9298.

Gallery hours: Wednesday, Friday, Saturday, Sunday: 1 PM to 5 PM

September 2015

2015 PSC Main Gallery Schedule

Currently in the Main Gallery...

2015 PSC Absolutely Abstract Open Juried Show August 26 - September 19, 2015

This is an open juried online exhibition open to all participants
nationwide in all media.

- Exhibition Chair: Steve Iwanczuk (si22@drexel.edu)
- Exhibition Co-Chair: Ian Siler (iansiler@gmail.com)

[See the work Here](#)

2015 Awards

First Place: "Perception of Beauty" Michelle Neifert

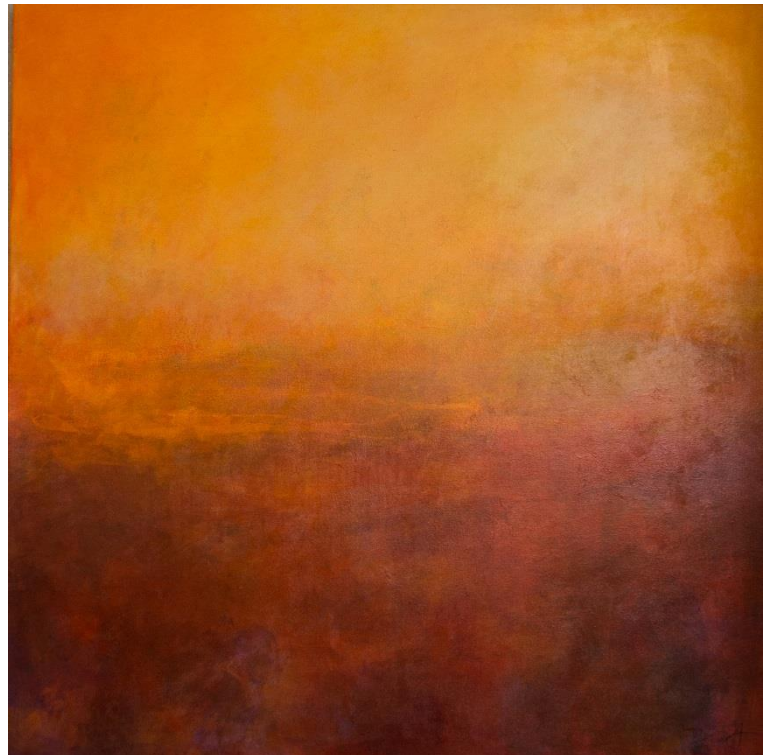
Second Place: "Donesk" Jim Conner

Third Place: "Fireworks on the Bay" Nicole Michaud

Honorable Mention

- "Eclipse" Barbara Handler
- "Thank You, Patty Smith" Kara Mshinda
- "Setting up the Paints" Marie avis Samohod

d



2015 First Place - Perception of Beauty - Michelle Neifert

Gallery hours: Wednesday, Friday, Saturday, Sunday: 1 PM to 5 PM

September 2015

2015 Stewart Gallery Exhibition Schedule

PSC Member Exhibit September 1 – 29

Melanie Dion Curated Show

“Paper Dolls”

Reception :

September 12, 2:00pm – 4:00 pm

Artists:

- Melanie Dion
- Meg Wolensky
- Kathryn Vaughn
- Taylor Hickman
- Krissy Arcidiacono
- Elise Broadway



Gallery hours: Wednesday, Friday, Saturday, Sunday: 1 PM to 5 PM

September 2015

Art Natters: Member News

Alice Chung's Group Show at the Swarthmore Borough Hall: Alice Chung had a group exhibition with 20 another artists of MCGOPA (Montgomery County Guild of Professional Artists Association) at the Swarthmore Borough Hall from Aug 2 to Aug 30, 2015



Alice Chung

Artist Update Chello Sherman: Chello Sherman received her MFA from Moore College of Art and Design August 15, 2015.



Ancestor Tree: the Exchange

The thesis exhibit features Sherman's piece titled *Ancestor Tree : The Exchange*. The piece is interactive it engages people to consider their mind set concerning people who are different then themselves and encourages them to seek to see others in a more honest and positive perceptive. The show will be open until *September 7th* in the Galleries at Moore.

Gallery hours: Wednesday, Friday, Saturday, Sunday: 1 PM to 5 PM

September 2015

Art Natters: Member News

Website for Past PSC Member (1935 to 1972) and President (1943) F. W. Weber Now Live!

Find the website at: www.fwweber.org

Frederick William Weber (1890-1972) served as PSC President in 1943 and remained an active member until his death in 1972 at age 82. A prolific artist, Weber was an authority on paint color chemistry and a newspaper columnist and lecturer.

Weber was president, treasurer, and technical director of F. Weber Co., the oldest manufacturer of artists' materials in the United States. He never let a product go to market without testing it on the easel himself. He also served as the art critic and as head of the art department for The Philadelphia Record.

The website includes:

- hundreds of images of Weber's paintings, sketches, photographs, and etchings
- newspaper articles, personal documents, and other early 20th Century artifacts
- additional biographical and contact information

The website was recently launched by the artist's grandson Eric who is eager to hear from individuals who own works by his grandfather or have related information to share. <http://fwweber.org/>

Contact:

Eric Weber

eric@fwweber.org



Frederick William Weber

Gallery hours: Wednesday, Friday, Saturday, Sunday: 1 PM to 5 PM

September 2015

Art Natters: Member News

Artist Update: Nancy E.F. Halbert

Classes:



Nancy E. F. Halbert will be teaching Creative Sketchbook Drawing at Main Line Art Center, Haverford, PA www.mainlineart.org on Tuesdays 6:30-9:30 pm, a great opportunity to refresh drawing skills, develop ideas and concepts for paintings. She is also teaching at the Creutzberg Campus of Lower Merion School Night:

Explorations in Drawing, Secrets to Watercolor and Soft Pastels and Mixed Media, day program. <http://www.mainlineschoolnight.org>. She is also available for semi and private lessons in home studio in Havertown, PA.

Exhibitions:

Nancy E.F. Halbert is proud to have, *"The Cat Is Loose Again"*, oil and chalk pastel on canvas, chosen to show in Harcum College's 100 Years of Art Installation, opening on Thursday, September 17, 2015, in the Kevin D. Marlo Little Theatre from 5:45 to 9pm and continuing until October 22. Gallery Show will be Tuesdays and Thursdays, 11am - 1pm and Wednesdays, 5-7pm or by appointment by emailing mashumoski@harcum.edu. The show runs through October 22.

Gallery hours: Wednesday, Friday, Saturday, Sunday: 1 PM to 5 PM

September 2015

Art Natters: Member News

Bucks County oil painter, **Maggie Leiby** will once, again be teaching classes at The Woodmere Art Museum in Chestnut Hill and Bucks County Community College in Perkasié, Pa. The Woodmere Museum class will be **Paint Like an Impressionist - Introduction to Palette Knife Painting**, this *six week* class with cover still life, landscape, as well as, a tour of the current Impressionist exhibit at the Woodmere celebrating the work of Pennsylvania artist, Raymond Theel. This guided tour will be conducted by Education Director, Hildy Tow. Classes are on Wednesdays, 1:30PM - 4:30PM beginning September 16th, through October 28th. No class September 23rd. All levels. A supply list will be sent upon registration. To register call: **215-247-0948** or register on line at www.woodmereartmuseum.org.

Bucks County Community College will offer **Landscape Painting in Oil** on Thursday evenings, 6:00PM - 9:00PM beginning September 10th - October 15th. This six week course will cover all aspects of landscape painting. All levels are welcome with a special welcome to Beginners. A supply list will be sent upon registration. To register call: **215-968-8409** or on line at www.bucks.edu

Bucks County Community College will also offer **two** - three week sessions of **Paint Like an Impressionist - Introduction to Palette Knife Painting** beginning Tuesdays evenings September 22nd - October 6th and again on October 20th - November 3rd. Students may sign up for one session or both. All levels. Supply List sent upon registration. Call: **215-968-8409** or on line: www.bucks.edu

Gallery hours: Wednesday, Friday, Saturday, Sunday: 1 PM to 5 PM

September 2015

Art Natters: Member News

Congratulations Linda Hollinger!



Girl with Parakeet, Itaparica Brazil

Linda Hollinger's photograph "*Girl With Parakeet, Itaparica Brazil*" won first place in PSC Photography 2015 annual juried show.

Painter **William Kosman** Presents Select Items From Normandy, With People and Simplicity, in New Posting
This new posting has some of the paintings I've been working on in Normandy. With some twists, as the sample above shows.

I just want to share them with you.

Please remember: Click on the image to enlarge it.

And, to access my Painter's Blog, just click on the link below.

As always, thanks for your time, your support, and - if you have the time - for your comments.

Link to Painter's Blog: www.williamkosman.blogspot.com



Gallery hours: Wednesday, Friday, Saturday, Sunday: 1 PM to 5 PM

September 2015

Art Natters: Member News

Page C10 (32) Bucks County Herald August 20, 2015

ARTS & Galleries

jarthur@buckscountyherald.com



"Mardi Gras Mask" is by Pearl Mintzer.



"Heart of Stone" is by Wendy Gladston.



"Hurry-Beach Bikestand" is by Anne Freeman.



"Leaving This World" is by Rodney Miller.

Large photography and digital art on view in "Think Big"

"Think Big," a large-format photography and digital art show featuring five photographers, will be on display at Rich Timmons Gallery from Aug. 28 to 30, with an opening reception from 7 to 9 p.m. Thursday, Aug. 27.

The photographers/digital artists who use modern technology as their method are Anne Freeman, Wendy Gladston, Rodney Miller, Pearl Mintzer and Curt Shreiner.

"Think Big" will feature large format digital photography and digital art that has shed the restraint of printed

photographs under glass in black frames.

Digital images at very high resolution can be enlarged enormously. Computer printing allows artists print on canvas, metal, acrylic and all sorts of creative media.

Before digital cameras, photographers had to wait for the photo to happen in the environment. Today, the photographer is a digital artist who can revision his or her photographs through use of computer software to create unique imagery.

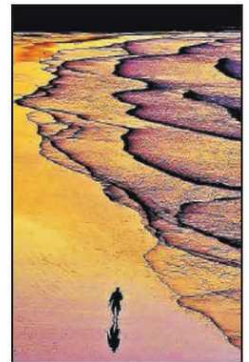
For the digital artist, the computer is

the palate used to paint with light, contrast, texture and color, creating digital photographic paintings that are limited only by creativity.

Some will argue that digital art is not "real art," since it is computer generated. However digital art is now widely accepted as an art form because it, too, involves creativity and the knowledge of art and design principles. Visit "Think Big" to decide for yourself.

The Rich Timmons Gallery is located at 3975 Route 202 Doylestown.

For information, call 267-247-5867.



"Journey into Dawn" is by Curt Shreiner.

Pearl Mintzer of New Hope shows off her love of color in solo art exhibit - The Intelligencer:
Gwen Shrift | local art | galleries | exhibits http://www.theintell.com/blogs/impressions/pearl-mintzer-of-new-hope-shows-off-her-love-of/article_e8075e99-2afe-5049-a94d-45687f02876a.html#.Vb6g5HCvRPU.email

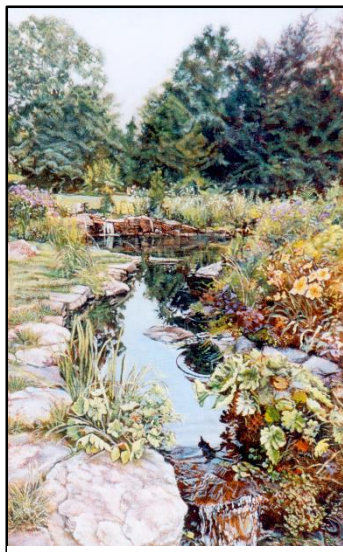
Pete Quarracino has the painting "At The Edge" included in :
Pennsylvania Arts Experience Exhibition
at the Governor's Residence Sept 13, 2015 11AM-3PM
2035 N Front St., Harrisburg PA 17102
This is part of the YorkFest /Gallery Walk in Harrisburg .
pete@quarracino.com
www.quarracino.com

Gallery hours: Wednesday, Friday, Saturday, Sunday: 1 PM to 5 PM

September 2015

Art Natters: Member News

Brenda L Bechtel is still striving to share her Art and reach as many Individuals as possible in one short lifespan. **Allied Artists of America 102nd Annual Exhibition**, September 3 - 13 at the Salmagundi Club, NYC includes Brenda's Oil on Linen, "Blue Skies Smiling at Me" Reception and Awards Ceremony, September 13, 1 ~ 4pm, awards presentation begins at 1:30. **Lyme Art Association** (America's Oldest Art Association) Presents "**Summer Days, Starry Nights, the 2015 Summer Painting and Sculpture Exhibition**" juried by Jeanne Potter, Master Watercolorist and Director of the Maritime Gallery at Mystic Seaport Museum, CT and includes "County Fair" a Pastel by Brenda. This exhibition and sale of Art continues through September 19. The **Warwick Art Museum, Rhode Island Presents the 29th Annual Open Exhibition**, September 1 - October 23, Juried by Franciose McAcree and includes "Ladybug Picnic" Oil on Linen, Awards Reception September 9, 6 - 8pm. In Harvard Square, Cambridge, MA, if you dare, to suffer the traffic, you can appreciate the talent of the Artist Members of **Cambridge Art Associations Annual Fall Salon in Honor of Mary Schein**, where



Ladybug Picnic, Chanticleer

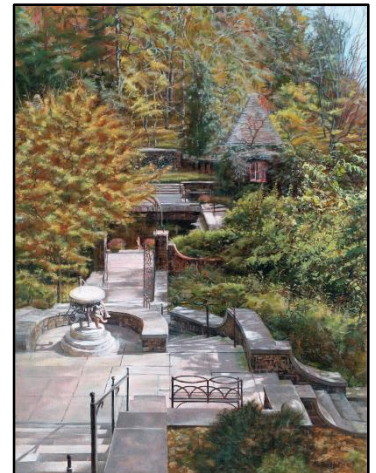
Brenda's Oil on Linen "Tea with H. F. at Three ~ Winterthur" is included September 8 - 26, awards will be presented, though I've not a clue when. **Pennsylvania Watercolor Society** is hosting their **36th International Juried Exhibition** at the Carlisle Arts

Learning Center, September 25 - November

13 and includes Brenda's watercolor "Memories of Infinitude"

Opening reception and awards presented September 27, 2 - 4pm. On a sad note, my baby Sis lost Her battle with cancer, July 22. My heart is broke, I trudge along through Art...this is what my Sis wanted.

Please, all Artists, lets strive to create our best in honor of All we miss, and those we continue to inspire



Tea with H.F. at Three

Ben Cohen was awarded SECOND PLACE in the New Jersey Pastel Painters Society Juried 2015 show at the Palmyra Cove, NJ -- Aug. 1 to Aug.29



Gallery hours: Wednesday, Friday, Saturday, Sunday: 1 PM to 5 PM

September 2015

Open Workshop Schedule

All workshops are open to the public. There is no need to register before attending. You do NOT have to be a member of the Philadelphia Sketch Club to participate in the workshops. Our workshops are open to anyone who is interested in drawing, painting or printmaking. All skill levels are welcome. **Fees:** Model workshops: \$8/session members, \$9/session for non-PSC members; Printmaking workshop: \$10/session; All workshops \$6 for full-time students.

Note: There will no workshops on Monday September 7th.

| Life Model | Costumed Model | Printmaking |
|--|---|--|
| <p>Mondays – Extended pose (multi-session): 6:30 PM-9:30PM Monitors: Robert Bohne, Vince Docktor, Dan Kuetemeyer</p> <p>Tuesdays – Extended pose: 12:00 PM to 3:00 PM Monitor: Jacqueline Barnett</p> <p>Wednesdays – Extended pose: 6:30 to 9:30 PM Monitor: Vince Docktor</p> <p>Saturdays – Extended pose: 9:30 AM to 12:30 PM Monitor: Vince Docktor</p> | <p>Thursdays Extended pose 12:00 PM to 3:00 PM Monitor: Bob Bohne.</p> | <p>Tuesdays 10:00 AM to 2:00 PM Monitor: Elizabeth H. MacDonald</p> |
| <p>Please Note: Those who use oil paints should bring their own container(s) to remove used solvents. Odorless solvents only.</p> | | |

Gallery hours: Wednesday, Friday, Saturday, Sunday: 1 PM to 5 PM

September 2015

Call for Volunteers

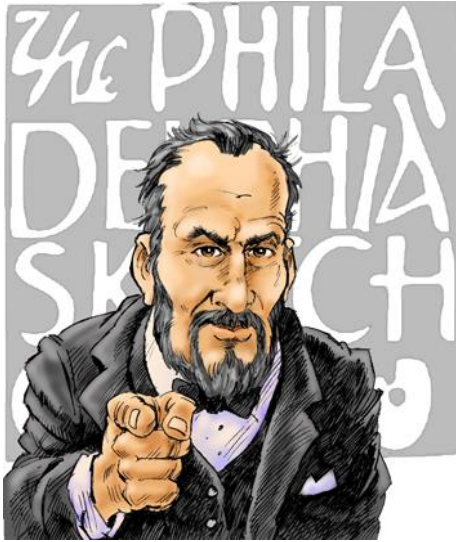


Illustration by Rich Harrington

We have important positions within the PSC that need volunteers to take over! Contact Faad Ghoraishi at fghoraishi@yahoo.com to help out your club with future events.

Still Wanted: Detail oriented members interested in helping us maintain and update our membership database. Our membership database is an important tool that helps us communicate with our members and friends more effectively.

If you have a modicum of computer graphics skills or if you want to learn them, get involved!

Contact us today if you want to help! Ask for Ken Weiner

The Portfolio: The newsletter of the Philadelphia Sketch Club is published monthly. **Editors:** Cathy Yang and Elise Anzini. Technical support and Web Master: Ken Weiner

Send your member news, announcements and corrections to portfolio@sketchclub.org. The due date for all materials is one week before the end of the month.

The Philadelphia Sketch Club

235 S Camac Street
Philadelphia, PA 19107
(215) 545-9298
<http://sketchclub.org/>
executivedirector@sketchclub.org
Gallery Manager: Marilyn Foehrenbach

Officers:

President: Richard Harrington
Vice President: Kenneth Deprez
Secretary: Fran Carter
Treasurer: William Patterson

Board of Directors:

Alice Chung
Vincent Docktor
Stephen Iwanczuk
Kevin Meyers
Nancy H. Mills
Brian Siegel
Amanda Setverson
Kenneth Weiner
Joe Winter