

Gallery hours: Wednesday, Friday, Saturday, Sunday: 1 PM to 5 PM

May 2016



Rich Harrington

This Month's Portfolio

Support Your Sketch Club	2
Membership	4
Sketch Club Activities	5
Dinner Meeting	7
2016 Main Gallery Schedule	8
2016 Stuart Gallery Schedule	10
Art Natters: Members News	11
Calls for Work and Notices	19
Member Classifieds	21
Sketch Club Open Workshop Schedule	23
Call for Volunteers	24

Send your member news, announcements and corrections to portfolio@sketchclub.org. The deadline for ALL submissions is 1-week before the end of the month.

Reminder: It's never too late. You can always renew your membership

You may pay online at

<http://sketchclub.org/annual-dues-payment/>

or mail your check to:

The Philadelphia Sketch Club

235 S. Camac St.

Philadelphia, PA 19107

For questions please contact the Gallery

Manager at 215-545-9298 or email:

executivedirector@sketchclub.org

Late Breaking News – See items that were submitted after the publication date. Go to:

<http://sketchclub.org/late-breaking-news/>

The PSC general email is: info@sketchclub.org

Gallery hours: Wednesday, Friday, Saturday, Sunday: 1 PM to 5 PM

May 2016

Support Your Sketch Club

Contribute

Please consider making your tax deductible contribution now. These funds will be put to good use providing enhanced services to our members and friends

Membership dues cover only a small portion of the PSC's operating expenses. Competition for funding for arts organizations like the Sketch Club is increasingly competitive and total funding for the arts is shrinking. Your additional support will keep the PSC an active support for visual artists in the Metropolitan Philadelphia area.

The Philadelphia Sketch Club is an IRS designated 501(c) (3) non-profit organization which allows your donations to be tax deductible.

You can call the office at 215-545-9298, mail checks to the Sketch Club or visit the Contribute page of our Website to give online at: <http://sketchclub.org/support-us/>

Support the Sketch Club when you purchase from Amazon

AmazonSmile Mother's Day Link:

<http://smile.amazon.com/gp/charity/homepage.html?orig=%2Fgp%2Fbrowse.html%3Fnode%3D502659011&ein=23-6291644>

Thank you for your participation in the AmazonSmile program.



Gallery hours: Wednesday, Friday, Saturday, Sunday: 1 PM to 5 PM

May 2016

Support Your Sketch Club

Like, Link & Share

If you're not following the Philadelphia Sketch Club on Facebook re-tweeting Sketch Club tweets yet, it's time that you did. We have well over 1700 followers. Get the word out about the Sketch Club. Please click the like button and share your comments and invite your friends to like our page.

Follow @PhilaSketchClub on Twitter, we have almost 400 followers. Please click the heart button and re-tweet our announcements.

Include links on your website, blogs and social media to The Philadelphia Sketch Club to increase traction across social media platforms.

Follow us on Facebook Twitter now!

Thanks to Don Brewer for managing PSC social media sites.



Gallery hours: Wednesday, Friday, Saturday, Sunday: 1 PM to 5 PM

May 2016

Membership

Become a Member of the Philadelphia Sketch Club!

If you're reading this edition of the Portfolio and you're not a member of the PSC, you should consider joining the more than 200 other Philadelphia area artists who have. The PSC is one of the most active visual art venues serving center city Philadelphia. The PSC is a hands-on organization that offers its members the opportunity to participate in all aspects of creating and presenting work to the public. It presents over 20 scheduled group and solo exhibitions annually and offers a wide range of daily workshops. [Get info and an application here.](#)

If you are a member of the PSC, please feel free to share the Portfolio with your artist friends and encourage them to become members.

Membership Renewal

You can check the status of your membership by going to the Current Members page on the PSC web-site: <http://sketchclub.org/sample-page/memberspace/>. All current members are listed. An asterisk (*) means that the membership has expired but is within the 60-day grace period for renewal. Names in red are active links to the individual's web site.

Renew Now! <http://sketchclub.org/annual-dues-payment/>

If you have any questions about your membership, please don't hesitate contact us at membership@sketchclub.org or call the office: 215-545-9298.

New Members this Month

The Sketch Club welcomes new members recently approved by the Board of Directors.

- | | |
|------------------------|--------------------|
| • Saikim Kummuantipaya | • David Von Roem |
| • Ronald Morris | • Constance Healey |

Current Sketch Club members can review new member applications at: <http://sketchclub.org/member-applications/>. The members only section and documents are password protected. If you've forgotten the password, please contact Ken Weiner at: membership@sketchclub.org.

Gallery hours: Wednesday, Friday, Saturday, Sunday: 1 PM to 5 PM

May 2016

Sketch Club Activities

2016 Annual Meeting and Election for Board of Directors and Officers



The annual Philadelphia Sketch Club Elections will be held at the May Members Dinner Meeting on Friday, May 13th.

There are ten Directors on the board. Directors are elected for a two-year term and Directors must step-down after two consecutive terms

The Officers of the Club (President, Vice President, Treasurer and Secretary) are elected annually.

Nominations are now being accepted to fill five board of director vacancies that will be open in June 2016. Nominations are also accepted for all officer positions.

Please send all nominations to michaelanthonyfernandez@yahoo.com. Include your nominees name and the position (specific officer or Director).

Any PSC member in good standing who has been a member for at least a full calendar year can nominate themselves for a Board of Directors or Officer position.

Voting is open to members in good standing only.

Critique Night: Every third Wednesday Night

This month: May 18 at 7:00 PM

Open to PSC Members and Non-Members

Critique Night is held in the Library of the Sketch Club every third Wednesday beginning at 7 PM. Bring work you've finished, work in progress, or just sketches for work you're planning! Photos, digital work, drawings, all mediums are welcome; we can project digital images on a screen for review, so you have the option to show work that may be too big or too heavy to transport to the Club. There is no one individual directing the critique, just your fellow artists and peers



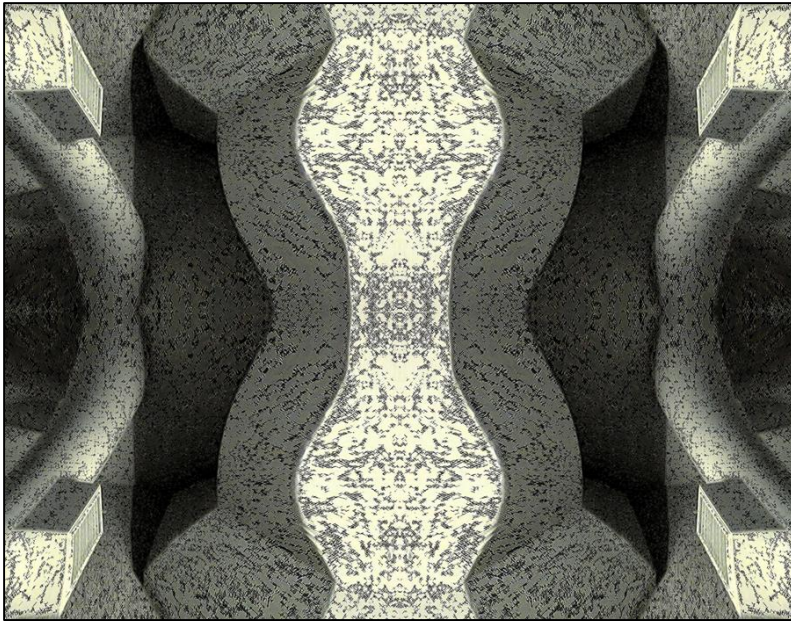
Gallery hours: Wednesday, Friday, Saturday, Sunday: 1 PM to 5 PM

May 2016

Sketch Club Activities

Philadelphia Sketch Club Photographer's Circle

Meeting: Thursday, May 12, 2016 from 6:30 to 8:30 PM



The next Photographer's Circle Meeting at the Philadelphia Sketch Club will occur on Thursday, May 12, 2016 from 6:30 to 8:30 pm. Please create or bring an EXPRESSIVE photograph, one that resonates with your sense of aesthetics, or just a great print. . . quite simply as an impetus for discussion.

You can contact Steve anytime at si22@drexel.edu or 215-300-9192 (cell).

Steve Iwanczuk

Photo Circle Monitor and Member of Philadelphia Sketch Club Board of Directors

Gallery hours: Wednesday, Friday, Saturday, Sunday: 1 PM to 5 PM

May 2016

Dinner Meeting

Members' Dinner Meeting

Dinner Open to the Public

Friday May 13, 2016

The PSC caterer is Pizzeria Chappelli, 209 South 13th Street. Desserts are from Cake and the Beanstalk from 1112 Locust Street.

**Please RSVP to Michelle in the PSC office by 12 Noon
May 11, 2016**

AGENDA

- 5:30- Social Period Begins
- 6:15- Election (members only)
- 7:15- Dinner

DINNER

- Members - \$16
- Guests - \$18

Annual Election of Officers and Directors

Plan to attend this important meeting.

Mark your calendar now!

The Philadelphia Sketch Club's Annual Election of Officers and Directors will take place

Coming-up for the June Meeting

Our speaker for the dinner meeting in June will be Linda Carol Gray, a nationally recognized calligrapher.

Thanks to Chuck Tarr for organizing dinner. Chuck would appreciate a volunteer or two to help with clean-up after dinner.



Gallery hours: Wednesday, Friday, Saturday, Sunday: 1 PM to 5 PM

May 2016

2016 Main Gallery Schedule

Opening May 13th

**THE ANNUAL
MEMBERS
EXHIBITION**
PHILADELPHIA SKETCH CLUB

MAY 13TH THROUGH JUNE 4TH 2016

**FEATURING : PAINTING • DRAWING
PHOTOGRAPHY • AMAZING WORKS OF
ART UP TO BUT NOT EXCEEDING FORTY
INCHES! ONLINE ENTRY DEADLINE: MID-
NIGHT SUNDAY MAY 1, 2016 DELIVERY:
MAY 6- 7, 2016 1 TO 5 PM PICKUP: JUNE
5 AND 7, 2016 1-5 PM.**

**Reception Sunday May 22, 2016, 2-4 PM at PSC.
Enter FREE On Line at www.sketchclub.org
Entry open to PSC Members Only, Please!**

Gallery hours: Wednesday, Friday, Saturday, Sunday: 1 PM to 5 PM

May 2016

2016 Main Gallery Schedule

Coming Next Month

The Workshop Exhibition on June 17th

The workshops facilitated by **Betty McDonald, Vince Docktor, Robert Bohne** and **Jacqueline Barnett** are having their annual Workshop Exhibition in the upstairs gallery from June 17th to July 8th. We are anticipating many workshop members will submit their drawings, paintings, pastels and watercolors for this show. There will be no charge for submissions and everyone who submits work is guaranteed that at least two pieces (if not more) will be shown in the exhibition.

The workshops provide a wonderful opportunity to draw from an unclothed or clothed model, to experiment with a variety of media, to work in a welcoming and non-threatening atmosphere, at their own level and pace. Viewing other artists' works encourages growth and knowledge about techniques and styles. There is a whole spectrum of possibilities within each workshop, from a study in basic anatomy, color, form and composition to unique interpretations of the figure and the print. In the print workshop, led by Betty McDonald, in the basement Tuesdays from 10 to 2 many techniques from wood cutting, drypoint etching and monotype are explored.

A prospectus will be available in mid-May. Anyone wishing more information about the workshops or the exhibition may contact <mailto:jbarnett12@verizon.net>. Please include the Workshop Exhibition in the subject area.

Looking forward to your submissions!

Jacqueline Barnett, Chair

Michelle Lockamy, Co-Chair

Gallery hours: Wednesday, Friday, Saturday, Sunday: 1 PM to 5 PM

May 2016

2016 Stuart Gallery Schedule

Member Exhibit May 2 – 30, 2016

Priscilla Bell Solo Show

Reception

Sun. May 22, 2016, 2-4 PM at PSC.

Exhibition Schedule and Events Calendar Always Available at sketchclub.org

Don't forget, you can always see the schedule for the coming year on the PSC web-site. Go to the Current Exhibits menu and select Exhibition Schedule. Here's the link: <http://sketchclub.org/exhibitions/>. And new for this year, we've added an Events Calendar under the Calendars menu. This calendar will show a complete list of the dates for important activities and deadlines. See it here: <http://sketchclub.org/calendar/>

Gallery hours: Wednesday, Friday, Saturday, Sunday: 1 PM to 5 PM

May 2016

Art Natters: Members News

Scam Alert!

Geynn Walder Di Pilla sent this to info@sketchclub.org.

I wanted to warn other artists about a scam that someone tried on me. I was contacted over a month ago by a lady who said she wanted to know if two pieces on my website were still for sale. I replied that they were and asked if she wanted to know anything else about them. She said she wanted to review the exact size, medium, and inspiration for them. About a week later, she said that she would like to proceed with purchasing them. She said that she was traveling, but would tell her husband to send me a check. In about another week, I received another email from her saying the check was in the mail and would arrive that day - she provided tracking information. I did get it. The check was for \$4,250, but it was supposed to be for \$2,500. I contacted her again and told her of the mistake. She said that she hadn't been clear enough with her husband and his assistant had made a mistake. She instructed me to deposit it and return the difference when I mailed the artwork out.

I went to the bank right away to deposit it. I asked the teller how long it would take to clear. She replied a day to a few days and then began to look at the check carefully. She ran it through the system, which indicated there was a high probability that it would not clear. She said that if I did try to deposit it and it didn't clear that not only would I be charged a fee, but this person could get access to my banking information. Rather than deposit it, I sent an email to the woman hoping it was still just a mistake. She never replied. I took all the evidence to the police station the other day.

Gallery hours: Wednesday, Friday, Saturday, Sunday: 1 PM to 5 PM

May 2016

Art Natters: Members News

Antonietta Kies and **Peter Halsey** are both recent graduates of the Pennsylvania Academy of the Fine Arts. They will be having a two-person show in July, in Red Bank, NJ.

NIGHT IS FLYING

Opening reception
7.2.2016 | 5-8pm



Peter Halsey



Antonietta Kies

6.30 .2016 - 7.20.2016

The Art Alliance of Monmouth 33 Monmouth St. Red Bank, NJ 07701

Gallery hours: Wednesday, Friday, Saturday, Sunday: 1 PM to 5 PM

May 2016

Art Natters: Members News

Brenda L Bechtel is thrilled to report Executive Director, Shirley Hutchins and the Board of Directors of the Bennington Center for the Arts, VT have included "Masonic Temple ~ Philadelphia" Oil on Linen in the 2016 Small Works Exhibition, May 7 - December 18, 2016.

Academic Artists Association 66th Annual National Exhibition of Traditional Realism includes "Lacework on Montague" Transparent Watercolour, Juried by Douglas Gillette and Dan Riccio, May 4 - 20, 2016. Juror Hayoon Jay Lee has selected for inclusion "Blue Skies Smiling at Me" Oil on Linen in the National Art League 86th Annual Juried Exhibition on Exhibit May 4 - 20, 2016.

Newburyport Art Association is hosting its 19th Regional Juried Exhibition May 6 - June 4, 2016 and includes "Tea with H. F. at Three ~ Winterthur" Oil on Linen.

The 115th New Haven Paint and Clay Club hosted by the Creative Arts Workshop of New Haven, CT, Juried by Barkley Hendricks includes "Fog Descends in an Amber Fugue", Transparent Watercolour, May 13 - June 10, 2016, Opening reception with awards May 13, 5 - 7pm.



Masonic Temple ~ Philadelphia



Red Lily Pond ~ Turtle Soup

Good times will be had by all during the Opening Awards Reception April 22, 6:30 - 9pm at the Front Street Art Gallery, MA which will be on view through May 1 in Scituate, MA. The Jurors, Becky Haletky, Nancy Colella and Vcevy Strekalovsky have awarded "Red Lily Pond ~ Turtle Soup" Oil on Linen, Third Place Oil/Acrylic. "Blue Skies Smiling at Me" Oil on Linen is currently included at PSC's 153rd Small Oils Exhibition.

To learn more www.Angelfire.com/Art2/Brookside

Gallery hours: Wednesday, Friday, Saturday, Sunday: 1 PM to 5 PM

May 2016

Art Natters: Members News

Lauren Sweeney has a month-long show at Penn's Burrison Alumni Gallery that continues through Mother's Day weekend to May 10. The gallery, which is situated at the entrance to the Alumni Club dining room, is open to the public from 7:30 AM to 5 PM every day.

This is the first show in the newly renovated gallery, which now has a new hanging system and individual pendant lighting. In addition, an online gallery of all the works in the show has been added, as well as an on-line sales gallery of those works. They can be found on the Burrison Gallery's Facebook page, as well as through the gallery's web page on the Alumni club's website.

*From Seashells to Birds at Play:
Works in Watercolor by Lauren Sweeney
Show continues through May 10 2016
at the Burrison Art Gallery*

at the University Club at Penn
2nd floor of the Inn at Penn
3611 Walnut St. Philadelphia PA

Gallery Hours:
7:30 AM - 5 PM daily



Preview works & online sales gallery at:
www.upenn.edu/universityclub or
at Burrison Gallery's Facebook page

For more details:
universityclub@pobox.upenn.edu / 215-898-4618
or ljsweeney1@verizon.net

Gallery hours: Wednesday, Friday, Saturday, Sunday: 1 PM to 5 PM

May 2016

Art Natters: Members News

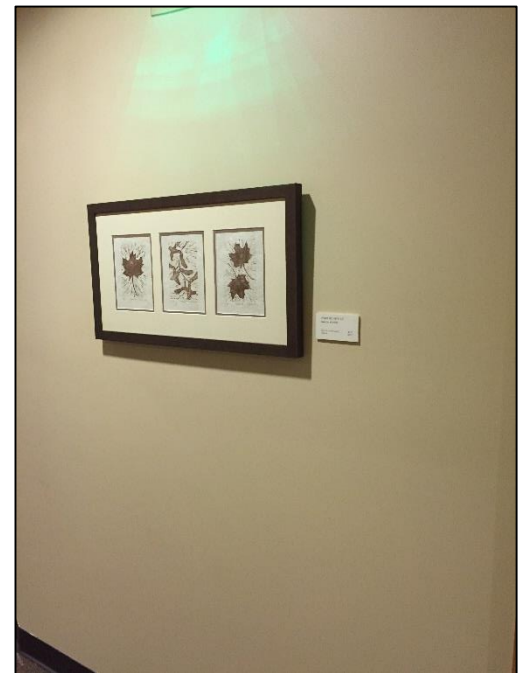
Nancy H. Mills is a Doylestown based artist and writer, with strong ties to Philadelphia and the Central Adirondacks. Her work has been exhibited and won awards in shows throughout the Northeast.

Her current exhibition, "Beyond Branches," at View in Old Forge, New York, is a series of linocuts and collagraphs of leaves and seed pods. The opening reception is May 7, from 5 to 7 PM. The work will be on display from March 26 until July 16, 2026.



Additionally, Ms. Mills will be exhibiting a piece in the Central Adirondack Show, also opening May 7.

For more information see the art center website: viewarts.org



Gallery hours: Wednesday, Friday, Saturday, Sunday: 1 PM to 5 PM

May 2016

Art Natters: Members News

Susan Barnes has three painting included in Jersey Shore Publications' new book **To the Shore Once More, Volume III** available everywhere in May 2016.

*A Jersey Shore
Dream...*

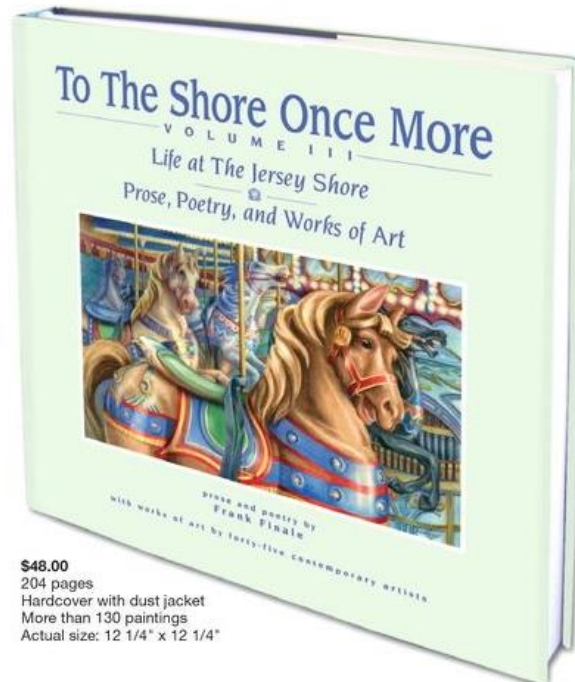
To The Shore Once More, Volume III

— Life at The Jersey Shore —

Prose, Poetry, and Works of Art

Prose and Poetry by Frank Finale

Works of Art by 45 Contemporary Artists



\$48.00
204 pages
Hardcover with dust jacket
More than 130 paintings
Actual size: 12 1/4" x 12 1/4"

Jersey Shore Publications is pleased to bring you "To The Shore Once More, Volume III," the third and final volume in Frank Finale's bestselling series of coffee table books about the Jersey Shore.

Join once more acclaimed author and poet Frank Finale as he captures "Life at the Jersey Shore" while exploring universal themes that touch us all. This oversized volume contains more than 130 resplendent paintings by more forty-five contemporary artists and features some of the loveliest landmarks and locations at the Shore.

Frank and the artists take readers on a journey through the

past and present, from Sandy Hook to Long Beach Island, and these graceful personal essays, poems, and paintings will elicit an emotional response and lingering memory. The book is divided into four chapters by season and takes place in many of the towns and regions along the coast.

This companion volume is one of the most enchanting and beautiful books about the Jersey Shore ever published and will make a great gift for special occasions and holidays. It will bring you closer to the places you love at the Shore and is sure to bring many days of reading and viewing pleasure—you, your family, and friends will treasure it for years to come.

On sale everywhere May 2016.

Pre-order first editions online at www.jerseyshorevacation.com
or call 888-22-SHORE.

Gallery hours: Wednesday, Friday, Saturday, Sunday: 1 PM to 5 PM

May 2016

Art Natters: Members News

Artist **Susan A. Esbensen** has two works on display at Bucks the Gallery at Lower Bucks Campus "WaterWorks" Exhibition. "Surf's Up," and "Hey, Wait Up," were accepted for this non-juried exhibition.



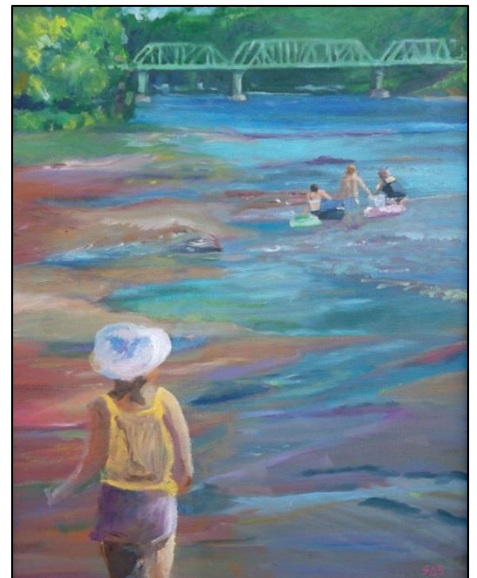
Figure 1 Surf's Up

The theme of this exhibition focuses on works related to and associated with water.

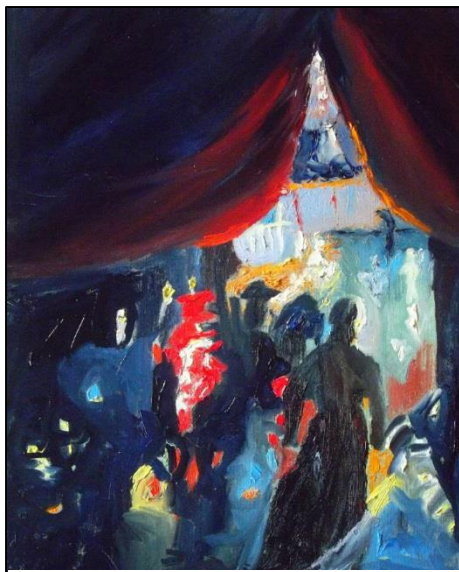
Opening reception was held Friday, April 8th from 6PM to 8:30 PM.

Gallery "finale" open house reception, Saturday, May 14th from 11AM – 2PM.

The commissions from all sales to be applied to the BCCC scholarship fund for the benefit of the Lower Bucks Campus.



Hey, Wait Up



Panem Et Circenses

"Panem Et Circenses," an oil painting by **Susan A. Esbensen** was juried into the Ellarslie Open 33 by juror Ross Lance Mitchell. He is the Director of Barnes-de Mazia Education and Outreach Programs for the Barnes Foundation in Philadelphia. 236 artists submitted 472 works. The exhibition will display approximately 180 works.

Ellarslie Open 33 juried exhibit at the Trenton City Museum, Cadwalader Park, will be on display May 7, 2016- June 26, 2016. Opening Reception, VIP Night May 6, 2016, 6-8 pm, \$10, \$15 at the door. Public Reception, May 7, 2016, 6-9 pm.

Gallery hours: Wednesday, Friday, Saturday, Sunday: 1 PM to 5 PM

May 2016

Art Natters: Members News

Ken Weiner invites all to see 19 recent works in an exhibition "Abstract Explorations" in the Staircase Art Gallery at the Or Hadash Synagogue located at: 190 Camp Hill Road, Fort Washington, PA 19034.



January 22 – May 15, 2016

Contact Ken through
kensimages@verizon.net
for more information.

Please visit:

kensartworks.com to see more of my work.



Blue Box -detail

Gallery hours: Wednesday, Friday, Saturday, Sunday: 1 PM to 5 PM

May 2016

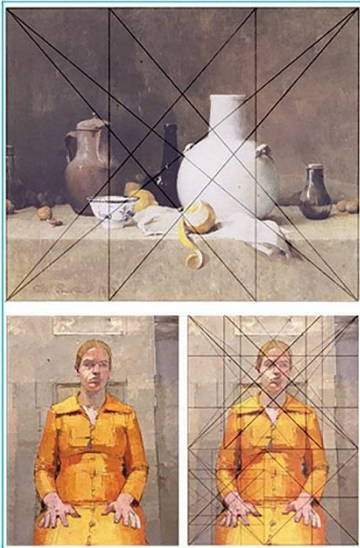
Calls for Work and Notices

Bucks County Classical Arts Center

The Art of Composition and Design with [Robert Armetta](#)

2 Day Workshop May 14th and 15th

This intensive workshop will focus on the general compositional strategies and the application of simple geometric principles used by most of the great artists throughout the ages. The emphasis will be on design, not mathematics. We will examine the work of artists and architects from the Renaissance to today in an effort to understand what the Golden Section is, and how it was used for composing with harmony and proportion. The practical, hands-on element of this course will help us utilize these principles in our own work.



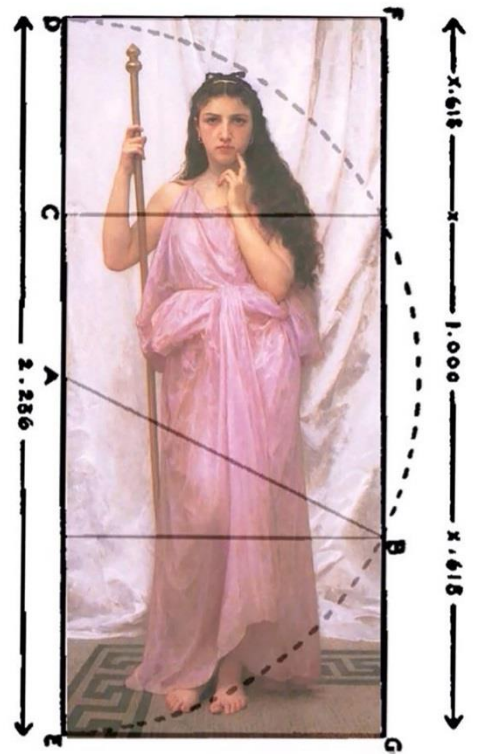
Saturday May 14th- Sunday May 15th
10am- 6pm, \$265, [PAY HERE](#) or Send
check made to "BCCAC" to Gold Light
Gallery, 30 West Bridge Street #3, New
Hope, PA, 18938. Registration is only

complete when payment is complete. **Materials List Here:**

<http://buckscountyclassicalartscenter.org/robert-armetta-workshop-may>

Bucks County Classical Arts Center, 30 West Bridge Street #3, New Hope, PA, 18938
267-221-6046

info@murdochart.com



Gallery hours: Wednesday, Friday, Saturday, Sunday: 1 PM to 5 PM

May 2016

Calls for Work and Notices

BUCKS COUNTY
Plein Air
FESTIVAL

Paint Out in Historic Pennsylvania's Bucks County

There's a plein air event in the footsteps of history, a place where Indians met on council rocks, farm houses were built from fields of stone and a river was crossed to give birth to a new nation.

Plan to attend the 1st Annual Bucks County Plein Air Festival, to be held June 6 – June 11.

ENTER by **March 23rd**, ~~READ MORE~~ (link to prospectus)

So come ye all to paint history, to have fun, to win (\$15,000 prizes), to support the arts in Bucks County!



Painting "June" courtesy of Alan Fetterman

Gallery hours: Wednesday, Friday, Saturday, Sunday: 1 PM to 5 PM

May 2016

Calls for Work and Notices

Academy House Exhibition Opportunity

The Academy House art committee is now looking for pieces to display in our lobby starting sometime in April.

If any of your artists at the Philadelphia Sketch Club are interested, ask them to stop into the lobby (which now can be accessed only through 251 S. 15th Street) and look at the spaces currently being used. (The two pieces on the lobby level are smaller than we would prefer; the piece on the landing is an appropriate size.) If they think they have work that would be suitable for us, ask them to send photos and dimensions and we will take them up for consideration. Pieces displayed can be for sale, though the condo asks 20% of the selling price.

Photos can be emailed to this address or dropped off at the front desk with my name on the envelope.

Thanks,

Michael Goldman

academyhousearts@gmail.com

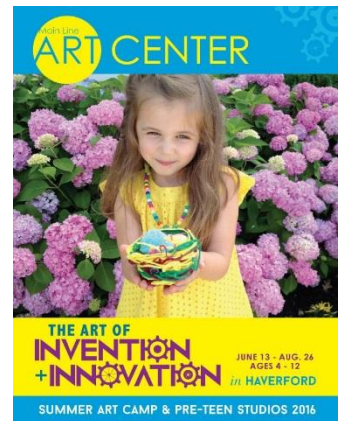
1425 Locust Street

Philadelphia, PA 19102

The Main Line Art Center Summer Art Camp & Pre-teen Studios

June 13 through August 26 | Ages 4-12 | Full & Half Days

Visit our site for more information: <http://www.mainlineart.org/learn-create/camps/>



Member Classifieds

Photography Services for Artists

Do you need high-quality digital images of your work? Is glare a problem? Color balance not quite right? I can help you get great images of your 2-D or 3-D work suitable for digital file output or output for



Gallery hours: Wednesday, Friday, Saturday, Sunday: 1 PM to 5 PM

May 2016

presentation and hard-copy presentation. I offer flexible availability, willingness to travel, special pricing for Sketch Club members. Contact: Ken Weiner

note2kenweiner@verizon.net;

215-280-6325.

Gallery hours: Wednesday, Friday, Saturday, Sunday: 1 PM to 5 PM

May 2016

Sketch Club Open Workshop Schedule

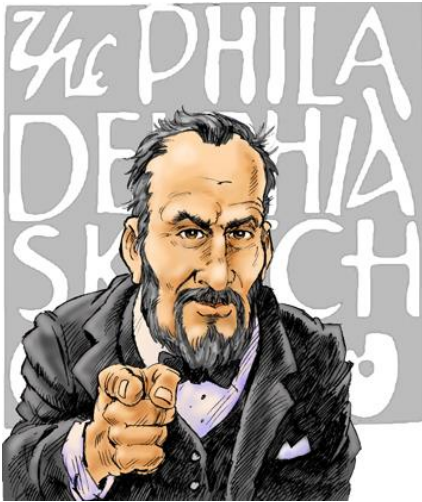
All workshops are open to the public. There is no need to register before attending. You do NOT have to be a member of the Philadelphia Sketch Club to participate in the workshops. Our workshops are open to anyone who is interested in drawing, painting or printmaking. All skill levels are welcome. Fees: Model workshops: \$8/session members, \$9/session for non-PSC members; Printmaking workshop: \$10/session; All workshops \$6 for full-time students.

Life Model	Costumed Model	Printmaking
<p>Mondays – Extended pose (multi-session): 6:30 PM-9:30PM</p> <p>Monitors: Robert Bohne, Vince Docktor, Dan Kuetemeyer</p> <p>Tuesdays – Extended pose: 12:00 PM to 3:00 PM Monitor: Jacqueline Barnett</p> <p>Wednesdays – Extended pose: 6:30 to 9:30 PM Monitor: Vince Docktor</p> <p>Saturdays – Extended pose: 9:30 AM to 12:30 PM Monitor: Vince Docktor</p>	<p>Thursdays</p> <p>Extended pose</p> <p>12:00 PM to 3:00 PM Monitor: Bob Bohne.</p>	<p>Tuesdays</p> <p>10:00 AM to 2:00 PM Monitor: Elizabeth H. MacDonald</p>
<p>Please Note: Those who use oil paints should bring their own container(s) to remove used solvents. Odorless solvents only.</p>		

Gallery hours: Wednesday, Friday, Saturday, Sunday: 1 PM to 5 PM

May 2016

Call for Volunteers



We have important positions within the PSC that need volunteers to take over! Contact Faad Ghoraishi at to help out your club with future events.

The Portfolio: The newsletter of the Philadelphia Sketch Club is published monthly. Editor: Ken Weiner;

Technical support and Web Master: Ken Weiner

Send your member news, announcements and corrections to portfolio@sketchclub.org. The due date for all materials is one week before the end of the month.

Back issues of the Portfolio are available at: <http://sketchclub.org/portfolio-archive/>

The Philadelphia Sketch Club

235 S Camac Street
Philadelphia, PA 19107
(215) 545-9298
<http://sketchclub.org/>
executivedirector@sketchclub.org

Gallery Manager: Michelle Lockamy

Officers:

- President: Richard Harrington
- Vice President: Kenneth Deprez
- Secretary: Fran Carter
- Treasurer: William Patterson

Board of Directors:

- Alice Chung
- Vincent Docktor
- Stephen Iwanczuk
- Kevin Meyers
- Nancy H. Mills
- Brian Siegel
- Amanda Stevenson
- Charles F. Tarr
- Kenneth Weiner
- Joe Winter