

Gallery hours: Wednesday, Friday, Saturday, Sunday: 1 PM to 5 PM

March 2016



Dennis Millar "YeeHaa"

This Month's Portfolio

Support Your Sketch Club	2
Membership	3
Sketch Club Activities	4
Dinner Meeting	7
2016 Main Gallery Schedule	8
2016 Stuart Gallery Schedule	10
Art Natters: Members News	11
Calls for Work	17
Member Classifieds	19
Sketch Club Open Workshop Schedule	20
Call for Volunteers	21

Send your member news, announcements and corrections to portfolio@sketchclub.org. The deadline for ALL submissions is 1-week before the end of the month.

Reminder: It's never too late. You can always renew your membership

You may pay online at

<http://sketchclub.org/annual-dues-payment/>

or mail your check to:

The Philadelphia Sketch Club

235 S. Camac St.

Philadelphia, PA 19107

For questions please contact the Gallery

Manager at 215-545-9298 or email:

executivedirector@sketchclub.org

Late Breaking News – See items that were submitted after the publication date. Go to:

<http://sketchclub.org/late-breaking-news/>

The PSC general email is: info@sketchclub.org

Gallery hours: Wednesday, Friday, Saturday, Sunday: 1 PM to 5 PM

March 2016

Support Your Sketch Club

Contribute

Thanks to our many dedicated supporters. Your generous end-of-the-year 2015 contributions to the PSC raised over \$5,000. Our expenses unabated for 2016 and beyond. Please consider making your tax deductible contribution now. These funds will be put to good use providing enhanced services to our members and friends

Your membership dues cover only a small portion of the PSC's operating expenses. Competition for funding for arts organizations like the Sketch Club is increasingly competitive and total funding for the arts is shrinking. Your additional support will keep the PSC an active support for visual artists in the Metropolitan Philadelphia area.

The Philadelphia Sketch Club is an IRS designated 501(c) (3) non-profit organization which allows your donations to be tax deductible.

You can call the office at 215-545-9298, mail checks to the Sketch Club or visit the Contribute page of our Website to give online at: <http://sketchclub.org/support-us/>

Like, Link & Share

If you're not following the Philadelphia Sketch Club on Facebook re-tweeting Sketch Club tweets yet, it's time that you did. We have well over 1700 followers. Get the word out about the Sketch Club. Please click the like button and share your comments and invite your friends to like our page.

Follow @PhilaSketchClub on Twitter, we have almost 400 followers. Please click the heart button and re-tweet our announcements.

Include links on your website, blogs and social media to The Philadelphia Sketch Club to increase traction across social media platforms.

Follow us on Facebook Twitter now!

Thanks to Don Brewer for managing PSC social media sites.



Gallery hours: Wednesday, Friday, Saturday, Sunday: 1 PM to 5 PM

March 2016

Membership

Become a Member of the Philadelphia Sketch Club!

If you're reading this edition of the Portfolio and you're not a member of the PSC, you should consider joining the more than 200 other Philadelphia area artists who have. The PSC is one of the most active visual art venues serving center city Philadelphia. The PSC is a hands-on organization that offers its members the opportunity to participate in all aspects of creating and presenting work to the public. It presents over 20 scheduled group and solo exhibitions annually and offers a wide range of daily workshops. [Get info and an application here.](#)

If you are a member of the PSC, please feel free to share the Portfolio with your artist friends and encourage them to become members.

Membership Renewal

You can check the status of your membership by going to the Current Members page on the PSC web-site: <http://sketchclub.org/sample-page/memberspace/>. All current members are listed. An asterisk (*) means that the membership has expired but is within the 60-day grace period for renewal. Names in red are active links to the individual's web site.

Renew Now! <http://sketchclub.org/annual-dues-payment/>

If you have any questions about your membership, please don't hesitate contact us at membership@sketchclub.org or call the office: 215-545-9298.

New Members this Month

The Sketch Club welcomes new members recently approved by the Board of Directors.

- Steven Billingsley
- Patricia Worley
- Nancy Burack
- Hassan Paige
- Ellen Wilmot

Current Sketch Club members can review new member applications at: <http://sketchclub.org/member-applications/>. The members only section and documents are password protected. If you've forgotten the password, please contact Ken Weiner at: membership@sketchclub.org.

Gallery hours: Wednesday, Friday, Saturday, Sunday: 1 PM to 5 PM

March 2016

Sketch Club Activities

Philadelphia Sketch Club Publicity Committee Report February 2016

Public Relations Initiatives

- **PSC 2016 Annual Philadelphia School District High School Student Art Exhibition**
 - Ad appears on Page 21 in February 2016 **ICON**
 - Event listing of High School Student Art Show appears in **Philly.com**
- **2016 Art of the Flower Exhibition – 3/4-26/16**
 - Call for Entries listing appears in **ICON Agenda** on Page 43 in Feb. 1 issue of **ICON**
 - Submitted Call for Entries to **InLiquid**
 - Submitted ad copy and photo for March 1 issue of **ICON**
 - Press Release developed and scheduled to send on 2/16/16
- **153rd Annual Exhibition of Small Oil Paintings – 4/8-30/16**
 - Submitted Call for Entries to **ICON Agenda** for March 1 issue of **ICON**
 - Submitted Call for Entries to **InLiquid**
 - Submitted ad copy and photo for April 1 issue of **ICON**
 - Press Release developed and will schedule to send on 3/8/16
- **Where Philadelphia** listing – PSC is in the publications gallery section. The magazines are in 7,000 Philadelphia hotel rooms.
- **Visit Philly** - PSC is listed in the gallery section of this website. 2.2 Million hits per year. #1 website visited by tourists coming to Philadelphia.

Public Relations Observations

- Sketch Club is mentioned in a January 19 Huffington Post blog: http://www.huffingtonpost.com/thom-nickels/is-everyone-really-an-art_b_9009344.html
- Social Networking/Marketing. Twitter, Facebook, etc. Continue to create a buzz.

Submitted by: **Lisa Siegel – Chair, Publicity Committee**

Gallery hours: Wednesday, Friday, Saturday, Sunday: 1 PM to 5 PM

March 2016

Sketch Club Activities

Key Circle Volunteers

The story behind the “Key Circle” volunteer group

There are many types of volunteer activities that are essential to maintaining the Sketch Club as a vibrant art club and showcase for outstanding art. For the last year a small group of member volunteers dubbed the “Key Circle” has been working to help the Club be reliably open during scheduled weekend gallery hours, as well as drop-off and pick-up sessions, jurying sessions, etc. – all the background work that goes into putting on each show.

We are dubbed the “Key Circle” because each of us has direct access to open the club. This also means that one of our 8-member group should be signed up for each session so the other volunteers can be assured of access. Equally importantly, Key Circle members quickly become more familiar with many aspects of Sketch Club functioning – and thus more comfortable handling all manner of situations.

This past year, over 50 total volunteers staffed the galleries on weekends, drop-off and pick-up events. Even though many volunteered just a few times during the year, those numbers added up to fully staffed shows for much of the year, at least until the busy fall season. It would make all the difference going forward if the Key Circle group could be expanded from its current 8 members to 12 or more, and if we could gain a modest increase in volunteering from the group of 50 volunteers, or add a few more volunteers. Perhaps members could add a volunteer session for every show in which they get a work accepted. Then invite your friends and colleagues to visit the club when you are there. Just a thought!

If you are now curious about joining the key circle, or just interested in becoming more knowledgeable about how to do certain things as a regular volunteer, the next time you volunteer ask your Key Circle partner to explain things more fully. Are you mystified by what to do if someone inquires about buying a work of art when no one is there to open the office? How to turn up the thermostat? How to buzz a visitor in? No one learns these things overnight, or just from reading a set of instructions. (However, there is a detailed lime-green Volunteer notebook in the hall outside the office that contains all sorts of useful information about the club.) For those who are considering stepping it up a notch to become a key circle member, consider that volunteering event your first “training session” to become a key circle person.

To get more information, please contact:

- Lauren Sweeney lsweeney1@verizon.net
- Marilee Morris mmorris.art@gmail.com
- Faad Ghoraishi fghoraishi@yahoo.com



**GALLERY
OPEN**

Admission is Free



Gallery hours: Wednesday, Friday, Saturday, Sunday: 1 PM to 5 PM

March 2016

Sketch Club Activities

Critique Night: Every third Wednesday Night

This month: March 16 at 7:00 PM

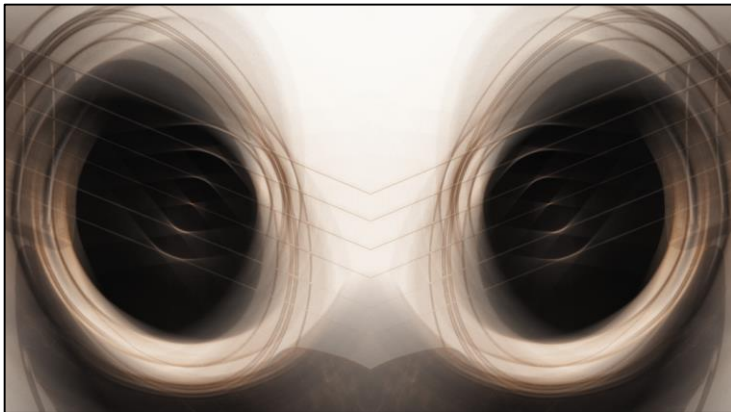
Open to PSC Members and Non-Members

Critique Night is held in the Library of the Sketch Club every third Wednesday beginning at 7 PM. Bring work you've finished, work in progress, or just sketches for work you're planning! Photos, digital work, drawings, all mediums are welcome; we can project digital images on a screen for review, so you have the option to show work that may be too big or too heavy to transport to the Club. There is no one individual directing the critique, just your fellow artists and peers



Philadelphia Sketch Club Photographer's Circle

Meeting: Thursday, March 10th, 2016 from 6:30 to 8:30 PM



Here's Lookin' at You by Steve Iwanczuk

The next Photographer's Circle Meeting at the Philadelphia Sketch Club is scheduled for Thursday, March 10, 2016 from 6:30 to 8:30 pm. Attendees should create or bring an image expressing "feelings (no limitations)" and we will discuss the results

You can contact Steve anytime at si22@drexel.edu or 215-300-9192 (cell). Steve Iwanczuk

Photo Circle Monitor and Member of Philadelphia Sketch Club Board of Directors

Gallery hours: Wednesday, Friday, Saturday, Sunday: 1 PM to 5 PM

March 2016

Dinner Meeting

Members' Dinner Meeting

Dinner and Presentation Open to the Public

Friday March 11, 2016

Pizzeria Chappelli as our new caterer, 209 South 13th Street.
Desserts are from Cake and the Beanstalk from 1112 Locust Street.



New Bud Vase*

Please RSVP to Michelle in the PSC office by 12 Noon March 10, 2016

AGENDA

- 5:30- Social Period Begins
- 6:15- Speaker: Elise Anzini
- 7:15- Dinner



MENU

- ☞ Sweet Sausage Scaloppini with Peppers, Onions in Red Sauce
- ☞ Roasted Potatoes
- ☞ Spinach Ravioli
- ☞ Garden Salad
- ☞ Rolls & Butter
- ☞ Coffee, Tea and Dessert

DINNER

- Members - \$16
- Guests - \$18

Guest Speaker: Elise Anzini

Elise Anzini lived most of her childhood in upstate New York in a haunted house where she developed her skills at turning eggshells into art. Her family then moved to Orange County, NY, and in order to escape the oppressive Orange County Choppers Cult, Elise fled to Philadelphia and attended Moore College of Art and Design, graduating in 2012 with a BFA in Illustration. Elise considers herself more of a traditional pysanky artist, though her schooling lends to the brighter color palette on her eggs. She is employed part time by the Easter Bunny during the Lenten season. The presentation will be on the art of Ukrainian Eggs (Pysanky). It will begin with a short history of the craft and include Elise's techniques and tips on the egg decorating process. The presentation will also touch briefly on the use of Etsy.



Pysanky

*Thanks to Chuck Tarr for donating 6 vintage Randall milk glass vases and for organizing dinner.
Chuck would appreciate a volunteer or two to help with clean-up after dinner.

Gallery hours: Wednesday, Friday, Saturday, Sunday: 1 PM to 5 PM

March 2016

2016 Main Gallery Schedule

2016 Art of the Flower



2015 Art of the Flower First Place, Kimberlee Nentwig, "Dahlia-
Redhead" Watercolor

March 4 - 26, 2016

Reception

- Sunday March 13, 2016, 2 - 4 PM at PSC
- PSC medals and cash awards presented at 3:00 PM

Gallery hours: Wednesday, Friday, Saturday, Sunday: 1 PM to 5 PM

March 2016

2016 Main Gallery Schedule

Coming Next: 153rd Small Oil Show

April 8-30, 2016



2015 Small Oils Show 1st Place Award: Maria Kurtzman

The Philadelphia Sketch Club's upcoming 153rd Annual Small Oils Exhibition represents an opportunity for today's artists to connect with many of the great artists of the past.

The 153rd Annual Exhibition of Small Oil Paintings presented by the Philadelphia Sketch Club represents one of the longest running and most prestigious juried exhibitions in the country. The

Cash awards and the R. Tait McKenzie Small Oils Medal will be presented at the reception on April 17th at 3:00 PM. Dr. McKenzie was an artist who created Olympic medals but he was also a physician who developed many of the

modern theories of physical therapy. He designed a medal specifically for this exhibition.

In addition to the best three in show awards, there will also be special awards for the best landscape, still life, portrait and abstract. Traditionally, the exhibition also features a work by each of the three jurors.

This year's Jurors are Alex Kanevsky, Alice Oh and Bill Scott



R. Tait McKenzie Small Oils Medal

Gallery hours: Wednesday, Friday, Saturday, Sunday: 1 PM to 5 PM

March 2016

2016 Stuart Gallery Schedule

PSC Member Exhibit



Ellen LoCiero: "Zinnias"

Priscilla Bell - WestSide

Ellen LoCicero - Eastside

Reception

Sunday March 13, 2016, 2 - 4 PM at PSC

Exhibition Schedule and Events Calendar Always Available at sketchclub.org

Don't forget, you can always see the schedule for the coming year on the PSC web-site. Go to the Current Exhibits menu and select Exhibition Schedule. Here's the link: <http://sketchclub.org/exhibitions/>. And new for this year, we've added an Events Calendar under the Calendars menu. This calendar will show a complete list of the dates for important activities and deadlines. See it here: <http://sketchclub.org/calendar/>

Gallery hours: Wednesday, Friday, Saturday, Sunday: 1 PM to 5 PM

March 2016

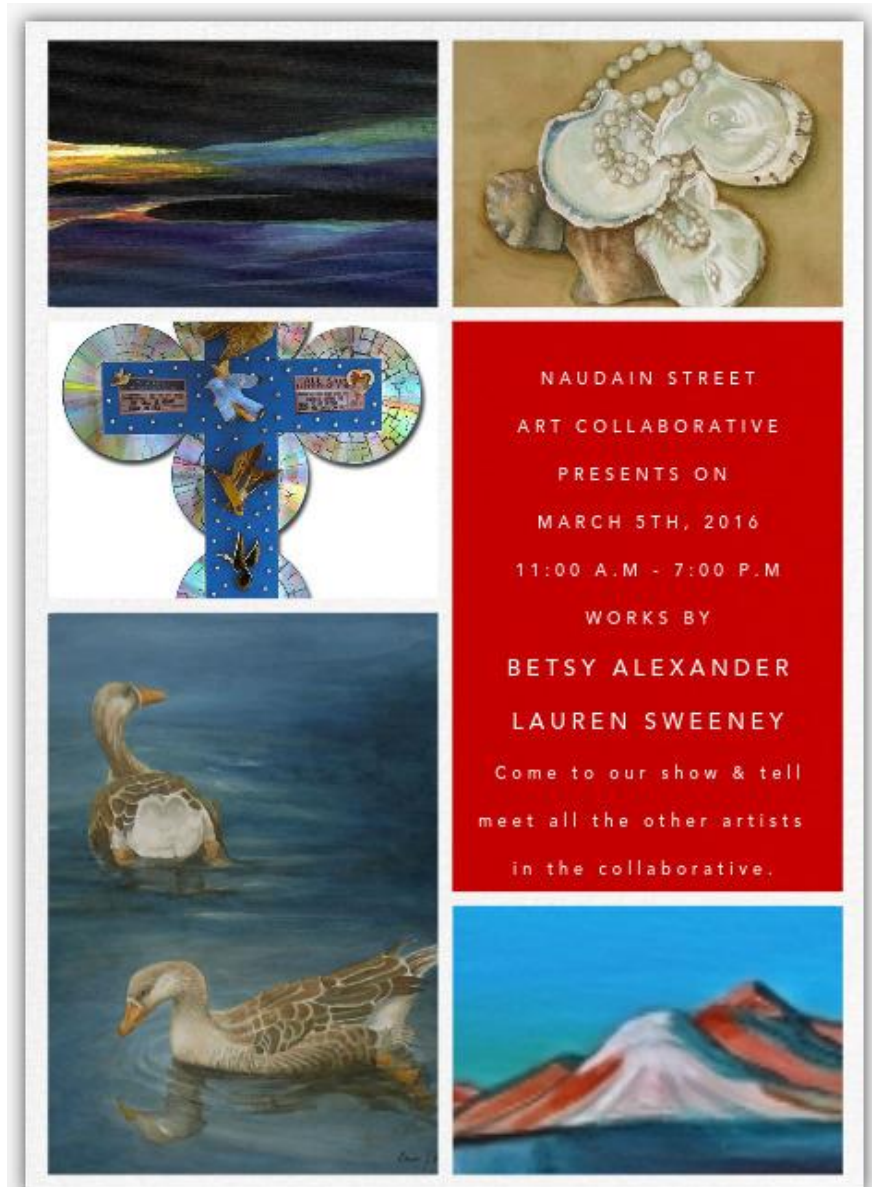
Art Natters: Members News

Member News

Several Sketch Club members are among a diverse group of artists in the Fitler Square area who have recently formed the *Naudain Street Art Collaborative*. These artists originally came to know each others' work through participation in Philadelphia Open Studios Tours, and have decided to share their art with interested neighbors, friends and collectors on a regular basis in an informal setting.

The group will be hosting six shows throughout the year, each featuring two artists, as well as a group show in July. The shows are being held at *Ageless Gardens*, 2503 Naudain St., Philadelphia, the studios of group organizer and Sketch Club member **Bhavisha Patel**. The group is having its second show in March, featuring watercolor paintings by Sketch Club member **Lauren Sweeney** and mixed media artist Betsy Alexander. The opening reception is Saturday March 5 from 11 AM to 7 PM, complete with food, beverages and conversation with attendees and member artists. The inaugural show, which was held in January and February, featured the paintings of Sketch Club member **Ed Bronstein** and works by polymer artist Emily Squires Levine. Other Sketch Club participants will include **Karen Stabenow** and **Karen Villarreal**.

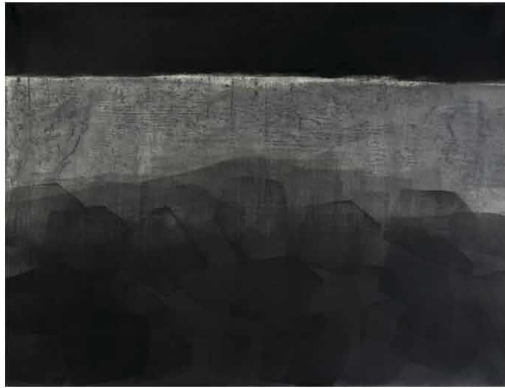
To receive information about the group, or invitations to upcoming shows, e-mail naudainartcollaborative@gmail.com.



Gallery hours: Wednesday, Friday, Saturday, Sunday: 1 PM to 5 PM

March 2016

Art Natters: Members News



THE RESONANCE OF PLACE Andrea Krupp & Roger Chavez

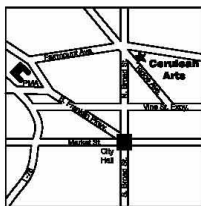
THE RESONANCE OF PLACE Andrea Krupp & Roger Chavez

March 2 - 26, 2016

Opening Reception:
Friday, March 4, 2016 5 - 8 pm

Artists' Talk:
Sunday, March 13, 2016 2 pm

FRONT:
Left: Krupp, *Erylsland*, graphite and acrylic on Mohawk paper, 19" x 25"
Right: Chavez, *Bello en Chetell #8*, oil on canvas panel, 19.5" x 20"



Cerulean Arts

Cultivating an appreciation for art by holding exhibitions, offering unique decorative and fine art for sale and providing art instruction for personal fulfillment.

Gallery Hours:
Wednesday: 2 pm - 8 pm
Thursday and Friday: 10 am - 6 pm
Saturday and Sunday: 12 pm - 6 pm



Cerulean Arts

GALLERY · STUDIO

1355 Ridge Avenue
Philadelphia, PA 19123
267-514-8647
www.ceruleanarts.com

Cerulean Arts is pleased to present *The Resonance of Place*: Andrea Krupp & Roger Chavez featuring works inspired by their recent residences in Iceland and Ireland, respectively. Exploring feelings of both connection and loss, Krupp's work embraces the emotional experience of Iceland's landscape. Through her deeply toned and burnished monochromatic drawings or the black line woodcuts with veils of blue overlay and text, Krupp strives to deepen her connection to Iceland "place". Extended engagement with the Irish landscape allows Chavez to discover something new within the same forms. His painterly brush marks and use of prismatic hues to generate vibrant and colorful grays results in a rich surface with subtle variations.

Gallery hours: Wednesday, Friday, Saturday, Sunday: 1 PM to 5 PM

March 2016

Art Natters: Members News

Nancy E. F. Halbert will be participating in ASSOCIATE II MEMBER'S SHOW OF 3RD STREET GALLERY with several contemporary landscape and figurative paintings. March 4-27. First Friday, March 4, 5-9 pm. Artist Reception, Sunday, March 6, 1-4 pm, 45 W. 2nd Street, Philadelphia, PA, 484-995-5604

"Into The Sky" and other paintings will be on display.



Changes Space+ Other Odd- dities

3rd Street Gallery's Associate II Members' Annual Show

Kathleen Babb Francesca Costanzo Constance Culpepper Peter Cunicelli
Lisa De Girolamo Rhea Dennis Jacquelyn Ferretti Leander Fontaine Franz Fox
Nancy E.F. Halbert Andrew Hart Mary Beth Kazanicka Katherine Kurtz

March 4 - 27 2016

1st Friday: March 4 2016 5:00 - 9:00 PM

Artists' Reception: Sunday, March 6 1:00 - 4:00 PM



45 N 2nd Street Philadelphia PA 215 625 0993 3rdstreetgallery.com

On March 10th, PSC member **Tracey Landmann** will be a speaker at the Brain Injury Association of Delaware's annual conference. The title of her presentation is "Perception and Expression: How the Process of Creating Art can Make your Brain Work Better." The conference, *Joined Voices, Shared Journeys: Raising Awareness, Building Relationships* will be held at the Dover Downs Conference Center.

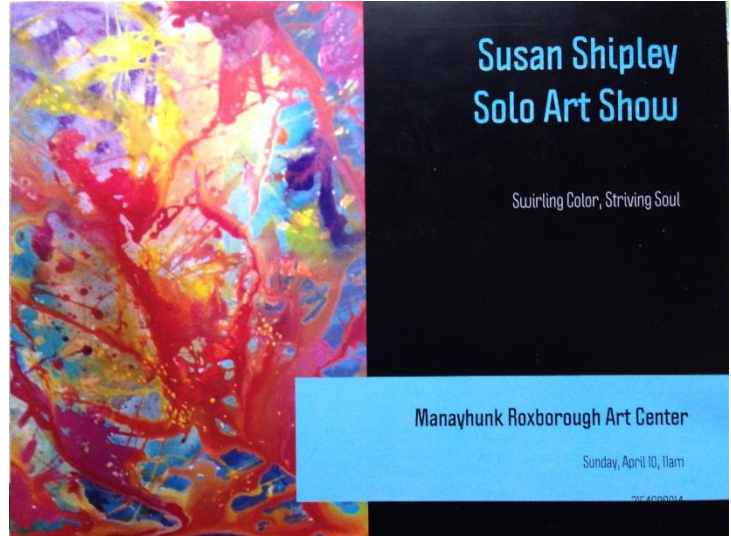
Gallery hours: Wednesday, Friday, Saturday, Sunday: 1 PM to 5 PM

March 2016

Art Natters: Members News

Susan Shipley is among the exhibiting artists in the Northwest Artist Collective showing works at the Manayunk Roxborough Art Center Show now at the Roxborough Development Center at 6111 Ridge Rd.

Shipley, a member of the NAC and also a new member of the Manayunk Roxborough Artists' Co-Op, will offer some of her recent works, including her acrylic on canvas painting, "Ascension." At first glance, the swirling movement of the abstract work, in tandem with the title, suggests that the "Art Travel," of "Ascension" is less a journey of a physical nature than one on a moral or metaphysical level. Shipley's use of color creates an upward thrust in the painting, with a mixture of yellow hues crowning a central, loosely triangular figure.



Ascension

The artist, who began painting as a child, has continued this communion, between brush and canvas, and various other media throughout her life and career. As a practicing counselor and psychologist, Shipley has used art therapy with students, in-patients, and the criminally insane. For her, art and therapy are intertwined, and she notes that, "Not only does art heal, it also reveals."

Gallery hours: Wednesday, Friday, Saturday, Sunday: 1 PM to 5 PM

March 2016

Art Natters: Members News

The Franz and Virginia Bader Fund Grant is pleased to announce its 2015 awardees. Among the group is Patrick Connors of Philadelphia, PA. He will use the grant to complete a series of oil paintings featuring Fairmount Park, Philadelphia. In his words, "Fairmount Park and the light that tumbles through its low hills and flat plains, that shimmers along its blue-brown river and gives a hazy glimmer to its scrubby flora, its magnificent plane trees, or even the most decrepit structure are regional phenomena. For nearly 40 years I have been fascinated by that park and light, they are a constant and ever-changing source of inspiration in my painting and drawings."

Connors exhibits his paintings & drawings nationally and abroad. He teaches at the New York Academy of Art and the Pennsylvania Academy of the Fine Arts. Among his previous grants are an Oxford Summer-Residency Fellowship and a Pollock Krasner Foundation Grant. His artwork and biography can be viewed online at:

www.connorsfinearts.com



Franz and Virginia Bader Fund

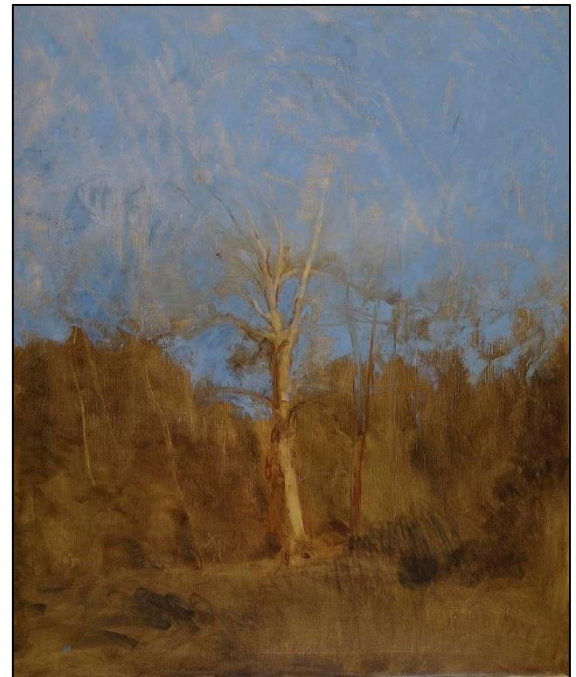
grants@baderfund.org

2000 Hamilton Street #700

Philadelphia, PA 19130

202 288 4608

The Franz and Virginia Bader Fund was established in 2001 in accordance with the will of the late Virginia Bader (1935–2001) to provide grants to visual artists who have reached the age of 40, reside within 150 miles of Washington, D.C., and whose ability to concentrate on their art would be enhanced by receiving a grant. Since 2002, the Franz and Virginia Bader Fund has given over \$900,000 in grants to 57 artists living in Washington, D.C., Maryland, Pennsylvania, and Virginia.



Lone Sycamore, Early Spring by Patrick Connors, 42 x 36 inches, oil on linen. Private collection.

Gallery hours: Wednesday, Friday, Saturday, Sunday: 1 PM to 5 PM

March 2016

Art Natters: Members News

Doug Smock's The pathetic start of it all

Wow! 30 full-color pages of wonderfulness all wrapped up in a 5.5" x 8.5" zine. This is a closed edition of 100. Each order will be personally signed and numbered by me, yes, me, the guy who created all this artwork. I may even be so inspired to write something super special, only for you! I can't wait to see the pure joy in your eyes as the postman approaches your door, so eager to deliver your spectacular purchase. Sure, I'll never really see that, but I can dream!

Order using PayPal through my website
<http://www.dougsmock.com> or on
Etsy at my shop dougsmockdotcom



Ken Weiner invites all to see 19 recent works in an exhibition "Abstract Explorations" in the Staircase Art Gallery at the Or Hadash Synagogue located at: 190 Camp Hill Road, Fort Washington, PA 19034.



January 22 – May 15, 2016

Contact Ken through
kensimages@verizon.net
for more information.

Please visit:
kensartworks.com to see more of my work.



Blue Box -detail

Gallery hours: Wednesday, Friday, Saturday, Sunday: 1 PM to 5 PM

March 2016

Calls for Work

Portfolio Headline Art

Sketch Club members can submit images for the Portfolio headline image. We encourage our members to take advantage of this exciting opportunity to display the dynamic vitality of their talent in this challenging format.

For more details about image and file specifications, go to: <http://sketchclub.org/psc-members-call-portfolio-headline-art/>

This month, we thank **Dennis Millar** for submitting his piece “YeeHaa”.



Dennis is new member of the PSC. He has earned awards for his work from the Philadelphia Water Color Society, the Cheltenham Center for the Arts and the Pine Shores Art Association.

His art education includes studies at The Samuel S. Fleisher Art Memorial, Philadelphia College of Art and Tyler School of Art. He began his art career in 2004, as an oil painter focusing mostly on seascapes and house portraits. He then progressed to gouache watercolor and alcohol ink media.

Prior to this, Dennis had been a project manager with GlaxoSmithKline in Philadelphia and received an intellectual-property copyright for a product market-launch project plan that he developed. Dennis and his wife, Joyce, have 3 children and 4 grandchildren, and reside in suburban Philadelphia. He enjoys photography and traveling with his family.

Gallery hours: Wednesday, Friday, Saturday, Sunday: 1 PM to 5 PM

March 2016

Calls for Work

CALL TO ARTISTS



Paint Out in Historic Pennsylvania's Bucks County

There's a plein air event in the footsteps of history, a place where Indians met on council rocks, farm houses were built from fields of stone and a river was crossed to give birth to a new nation.

Artists are invited to enter the 1st Annual Bucks County Plein Air Festival, to be held June 6 – June 11. ENTER by **March 23rd**, [**READ MORE**](#) (link to prospectus)

Artists are invited to enter the 1st Annual Bucks County Plein Air Festival, to be held June 6 – June 11. ENTER by **March 23rd**, [Get the Prospectus](#)

So come ye all to paint history, to have fun, to win (\$15,000 prizes), to support the arts in Bucks County!



Painting "June" courtesy of Alan Fetterman

The Main Line Art Center Summer Art Camp & Pre-teen Studios

June 13 through August 26 | Ages 4-12 | Full & Half Days

Visit our site for more information: <http://www.mainlineart.org/learn-create/camps/>



Gallery hours: Wednesday, Friday, Saturday, Sunday: 1 PM to 5 PM

March 2016

Calls for Work

John James Audubon Center

The John James Audubon Center at Mill Grove and Valley Forge Audubon Society are proudly hosting their 10th annual Juried Art Show in April 2016. More than \$2,000 of award money will be granted in five different categories. The show will be held in Audubon PA at the first home in America of artist and naturalist John James Audubon. This site offers a unique perspective of how nature can inspire art.

Get the prospectus: <http://sketchclub.org/wp-content/uploads/2016/01/2016-Prospectus-for-Art-Show-8-5-by-11-5.pdf>

The theme of this show is "Drawn from Nature." The shared mission of the John James Audubon Center and the Valley Forge Audubon Society is to inspire people to appreciate, preserve and protect birds, other wildlife, and their habitat; to promote personal appreciation and stewardship of the local natural environment through education and active participation in its preservation; and to preserve the artistic, scientific, and historic legacy of John James Audubon and celebrate the conservation movement he inspired. The theme of this art show follows from the above ideas. Images should in some way feature, with or without human presence, some aspect of birds, wildlife and/or nature; and/or the impact of birds, wildlife, nature, or man on a past, present or future environment. If you have a Facebook page or a newsletter could you please include information about this show? If you would like hard copies of fliers and prospectus, please contact wchristie@audubon.org.

1201 Pawlings Road
mlisagsullivan68@gmail.com
Audubon, PA 19403
610-666-5593 x 110

Member Classifieds

Photography Services for Artists

Do you need high-quality digital images of your work? Is glare a problem? Color balance not quite right? I can help you get great images of your 2-D or 3-D work suitable for digital file output or output for presentation and hard-copy presentation. I offer flexible availability, willingness to travel, special pricing for Sketch Club members. Contact: Ken Weiner

note2kenweiner@verizon.net;
215-280-6325.



Gallery hours: Wednesday, Friday, Saturday, Sunday: 1 PM to 5 PM

March 2016

Sketch Club Open Workshop Schedule

All workshops are open to the public. There is no need to register before attending. You do NOT have to be a member of the Philadelphia Sketch Club to participate in the workshops. Our workshops are open to anyone who is interested in drawing, painting or printmaking. All skill levels are welcome. Fees: Model workshops: \$8/session members, \$9/session for non-PSC members; Printmaking workshop: \$10/session; All workshops \$6 for full-time students.

Life Model	Costumed Model	Printmaking
Mondays – Extended pose (multi-session): 6:30 PM-9:30PM Monitors: Robert Bohne, Vince Docktor, Dan Kuetemeyer Tuesdays – Extended pose: 12:00 PM to 3:00 PM Monitor: Jacqueline Barnett Wednesdays – Extended pose: 6:30 to 9:30 PM Monitor: Vince Docktor Saturdays – Extended pose: 9:30 AM to 12:30 PM Monitor: Vince Docktor	Thursdays Extended pose 12:00 PM to 3:00 PM Monitor: Bob Bohne.	Tuesdays 10:00 AM to 2:00 PM Monitor: Elizabeth H. MacDonald
Please Note: Those who use oil paints should bring their own container(s) to remove used solvents. Odorless solvents only.		

Gallery hours: Wednesday, Friday, Saturday, Sunday: 1 PM to 5 PM

March 2016

Call for Volunteers



We have important positions within the PSC that need volunteers to take over! Contact Faad Ghoraishi at to help out your club with future events.

The Portfolio: The newsletter of the Philadelphia Sketch Club is published monthly. Editor: Ken Weiner;

Technical support and Web Master: Ken Weiner

Send your member news, announcements and corrections to portfolio@sketchclub.org. The due date for all materials is one week before the end of the month.

Back issues of the Portfolio are available at: <http://sketchclub.org/portfolio-archive/>

The Philadelphia Sketch Club

235 S Camac Street
Philadelphia, PA 19107
(215) 545-9298
<http://sketchclub.org/>
executivedirector@sketchclub.org

Gallery Manager: Michelle Lockamy

Officers:

- President: Richard Harrington
- Vice President: Kenneth Deprez
- Secretary: Fran Carter
- Treasurer: William Patterson

Board of Directors:

- Alice Chung
- Vincent Docktor
- Stephen Iwanczuk
- Kevin Meyers
- Nancy H. Mills
- Brian Siegel
- Amanda Stevenson
- Kenneth Weiner
- Joe Winter