



# PORTFOLIO

May 2014

## *PSC 2014 Member Benefit Show "Domestic & Wild", May 9 to May 31*

This year's PSC Members show will benefit the Philadelphia Animal Welfare Society (PAWS). PAWS is Philadelphia's largest no-kill animal shelter and finds loving home for thousands of animals each year. This is a non-juried show for Members Only. Works featuring wildlife or domestic animals are encouraged, but not required to exhibit.

- **Entry Fee:** \$10 for one entry - all to be donated to PAWS
- **Works Eligible:** One (1) piece utilizing any 2D or 3D medium, no size restriction (70x70 is maximum we can take upstairs), all subjects
- **Enter Online:** <http://sketchclub.org/psc-official-online-submission-site/>
- Online Sales Gallery for the Show will be created.
- 40% commission on sales - 50% of which is donated to PAWS
- **Delivery:** Friday May 2 and Sat May 3, 2014, 1 to 5pm



### **Inside "The Portfolio":**

Now in the Stewart Room Gallery: p. 2  
2014 Stewart Room Gallery Schedule: p. 2  
May Dinner Meeting: p. 3  
Upcoming Events: p. 4-5  
PSC Flash Salon: p. 6  
Notices from Members: p. 7  
Open Workshop Schedule: p. 8  
Art Natters: p. 9  
2014 Main Gallery Schedule: p. 13

Send your member news, announcements and corrections to [portfolio@sketchclub.org](mailto:portfolio@sketchclub.org). The deadline for ALL submissions is 1 week before the end of the month.

You do not have to enter your work online. The online submission option is only for allowing members to have an online gallery to help sales and also to allow members to donate to PAWS if they wish.

Simply drop off your work on the delivery dates below at PSC and pay no entry fee.

All members are allowed one work in the Annual Member Show. Any medium or subject is welcome.

## Now in the Stewart Room Gallery:

### *Katya Held: May 1 to 31, 2014*



Reception on May 5, 2-4 PM.

Katya is an accomplished realist artist, a Professional Program graduate and a fellow at Studio Incamminati. Katya maintains studios in Philadelphia and St. Petersburg and works on a wide variety of subjects: portraits and figures, city scenes and rural landscapes, still life and floral compositions.

#### 2014 Stewart Room Exhibitions

May 1-31, 2014	Katya Held: 1st PSC Invitational Artist Show (East and West Side)	Reception: May 5, 2-4 PM
June 1-29, 2014	Pearl Mintzer(East Side) Tom Foral (West Side)	Reception: June 15, 2-4 PM
July 1-27, 2014	Patricia Ilves-Corressel (East Side) Faad Ghoraishi (West Side)	Reception: July 3, 2-4 PM
August 1-31, 2014	Patricia Ilves-Corressel (East Side) Barbara March (West Side)	Reception: Aug. 11, 2-4 PM
September 1-28, 2014	2nd PSC Invitational Artist Show (East and West Side: Artist TBD)	Reception: Sept 15, 2-4 PM
October 1-30, 2014	Thomas J. Foral (East Side) William C. Patterson (West Side)	Reception: Oct. 3, 2-4 PM
November 1-30, 2014	3rd PSC Invitational Artist Show (East and West Side: Artist TBD)	Reception: Nov. 3, 2-4 PM
December 1-30 2014	2014 Annual Volunteers Exhibition (East and West Side)	Reception: Dec. 8, 2-4 PM

**To all exhibitors:** Please send Faad Ghoraishi ( [faad@ghoraishi.com](mailto:faad@ghoraishi.com)) your digital posters one month prior to your show so we can advertize it to our mailing list. We recommend you arrange your opening reception to coincide with any major exhibition reception for that month in the main gallery. **Also, please send an image of your work and a short bio or artist's statement to Jeff Gola** ([portfolio@sketchclub.com](mailto:portfolio@sketchclub.com)) for inclusion in the newsletter.

## *May Dinner Meeting*

On Friday, May 9, 2014, the Philadelphia Sketch Club will hold its Annual Membership Meeting and Elections for Officers and Directors. The meeting schedule is as follows:

5:15 PM Social Period Begins

6:15 PM Annual Membership Meeting and Elections

7:15 PM Dinner

### **The Menu:**

- Tossed Salad
- Beef Stroganoff
- Parmesan Tri-colored Noodles
- Baked Manicotti
- Buttered Green Beans

In place of a speaker, this dinner meeting will serve as the Annual Membership Meeting and Elections for Officers and Directors. Members will be able to vote for all Officers and five non-officer Directors.

If you are unable to attend the May 9, 2014 meeting, you may appoint someone to act as your proxy and vote on your behalf at the meeting. Please RSVP to this meeting by Wednesday, May 7<sup>th</sup> by emailing [executivedirector@sketchclub.org](mailto:executivedirector@sketchclub.org), or by calling and leaving a message at 215-545-9898.

## *Coming Up: June Dinner Meeting*

For the PSC June Dinner meeting, our speaker will be Mike Zaikowski of Profiles Fine Art Printmaking Studio of Chestnut Hill, PA. Join Mike for an introduction to the three basis of giclée printmaking - scanning, proofing and printing. Mike will discuss the options available at each step of the process, explaining what to expect and discussing the pitfalls to avoid. He'll bring lots and lots of samples for you to review, and will welcome your questions. More about Profiles Fine Art Printmaking Studio can be seen at their website, [www.profilesstudio.com](http://www.profilesstudio.com).

## **Congratulations to the winners and all participants in the Recent "Small Oils" show**



◀ **Best in Show** - Maria Kurtzman, "Cantaloupe", Oil on Board, 12"×12"

## Upcoming Events

### *The Art of Business and the Business of Art: Saturday, May 10*

Come hear CEO Bill Mignucci of DiBruno Bros, and Artist Robert Beck, award-winning documentary and plein air oil painter from Bucks County, speak on *The Art of Business and the Business of Art*, Saturday May 10<sup>th</sup>, 5:30pm – 8:00pm at the Sketch Club, 235 S. Camac St.

This is a fundraising and networking event for local CEOs, C-Level Executives, and Artists to benefit the Philadelphia Sketch Club.

Open Bar and Hors D'oeuvres will be served  
\$25 suggested minimum donation per person

Visit Our Speakers' Websites:

<http://www.robertbeck.net/>

<http://www.dibruno.com/>

---

### *Third Thursday Theater & Talk (TTT&T)*

The TTT& T is scheduled to be held on the third Thursday of each month and is open to all PSC members and their guests. Each month, we will be presenting an art-related movie on our newly installed large 120 inches screen with new sound system in the main gallery.

For updates or more information on upcoming dates and movies, see the PSC website or watch for email updates. The TTT&T is BYOB. You will need to bring **your own wine/beer**. Soft drinks will be provided with dinner.

- Location: PSC main building on South Camac Street in Center City, Philadelphia.
- Doors open at 6:00 PM on **Third Thursday of each month**
- Dinner starts at 6:30 PM.
- Movie starts at 7:00 PM.
- Art talk after the movie
- Fee: \$5 per person
- RSVP to [exhibitions@sketchclub.org](mailto:exhibitions@sketchclub.org)
- Movie captions will be offered

## *2014 PSC Philadanco Benefit Art Exhibition*

June 13 – 28 at the PSC, Reception on Sunday June 15, from 1-5 PM at PSC.

See Prospectus at: <http://sketchclub.org/wp-content/uploads/2014/01/Philadanco-Prospectus-2014-v-4.pdf>

Enter Online at <http://sketchclub.org/psc-official-online-submission-site/>

- Entry Deadline: **Sunday May 25, 2014 at midnight**
- Notification by email June 3 after 5 pm
- Delivery: June 6-7, 2014, 1 – 5 PM
- Pickup:, June 29 and July 2, 2014, 1-5 PM

Jurors: - Cecelia Fitzgibbon, President of Moore College of Art  
 - Lisa Hanover, CEO of the Michener Museum  
 - Nelson Shanks, Renowned portrait artist and Founder & Artistic Director of Studio Incamminati

## *2014 Athenæum of Philadelphia's 200th Anniversary Art Exhibition*

June 29 – August 8, 2014 at the Athenæum of Philadelphia

The Athenæum is located on the east side of Washington Square below Walnut St. at 219 S. 6th St: <http://www.philaathenaeum.org>

Reception : Sunday June 29, 2014, 2 - 5 PM at the Athenæum

This is an online entry OPEN juried exhibition. Please read the prospectus as there are **limitations on allowed subject matters**. The show will be at the Athenæum gallery. Contact show chairs for any questions.


See Prospectus at:

<http://www.philaathenaeum.org/pdf/AthenaeumArtExhibitionProspectus2014.pdf>

Enter Online at


<http://www.philaathenaeum.org/competition.html#dashboard>

- Entry Deadline: **Sunday June 1, 2014 at midnight**
- Notification: June 11, 2014.
- Delivery: June 20 – 21, 2014, 12:00 – 5:00 PM at the Athenæum
- Pickup: Aug 11-12, 2014 9AM-6 PM at the Athenæum




### Call for Entry

**2014 Celebration of the  
Athenæum of Philadelphia's  
200th Anniversary Art Exhibition**



**June 29 – August 8, 2014 at the Athenæum**  
 Monday – Friday, 9:00 AM – 5:00 PM  
**Reception:**  
**Sunday, June 29, 2014, 2:00 – 5:00 PM at the Athenæum**

Open, juried exhibition. All two-dimensional media welcome.  
 Subject matter: Interior/exterior of the Athenæum and a large selection of National Historic Places in Philadelphia.  
 (See [www.philaathenaeum.org/competition.html](http://www.philaathenaeum.org/competition.html) for complete details.)  
 Deadline for entry: June 1, 2014



The Athenæum of Philadelphia  
 219 South 6th Street • Philadelphia, PA 19106  
 (East side of Washington Square below Walnut Street)  
 215-925-2688 | [www.philaathenaeum.org](http://www.philaathenaeum.org)  
 Exhibit co-chairs: Ted Lewis and John Schmiechen



## *PSC Flash Salon*

The PSC Flash Salon is a solo or group exhibition of very short duration, anywhere from 5 days to 9 days, in our historic main gallery at 235 S. Camac St. in Philadelphia. It is a PSC juried show open to all, but specifically targeting post-education pre-career artists and curators in the Philly area.



The current Flash Salon selected artist is Planta. “Drawing...the ethereal” – April 28-May 2, 2014

*“Drawing...the ethereal” is a series of works that explores a visual and emotional narrative inspired by spiritual and emotional transcendence. This theme is rendered through a series of staged self-portraits, which become reinterpreted through large and expressive, painted and drafted imagery.”*

~ Planta

Reception: Thursday May 1, 2014 4-6 PM at PSC

Available times for upcoming PSC Flash Salons are:

- Flash Salon 3 – June 2-6, 2014- 5 day session
- Flash Salon 4 – July 2 – July 11, 2014 – 9 day session
- Flash Salon 5 – Aug 11-15, 2014- 5 day session
- Flash Salon 6 – Sept 15-19, 2014- 5 day session
- Flash Salon 7 – Oct 20-24, 2014- 5 day session
- Flash Salon 8 – Nov 19-28, 2014 – 9 day session
- Flash Salon 9 – Dec 17-26, 2014 – 9 day session

More information on the application, rules and layout of the exhibition space can be seen on the PSC website at <http://sketchclub.org/flash-salon/>

## Notices from Our Members

Send in your items for "Notices"! We welcome notices of workshops, art-related services, sale or swap of art materials from PSC members. Make sure to include your full contact information.

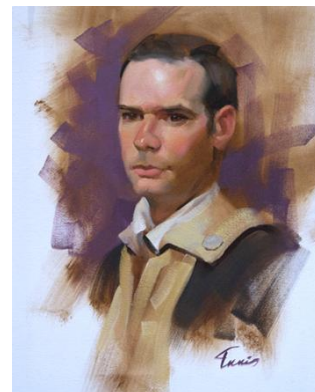
**Disclaimer:** *The PSC makes no claims, promises, or guarantees about the accuracy, completeness, or adequacy of the services listed in this document, and expressly disclaims liability for errors and omissions in the listings.*

---

From **Christiane Casella** ([www.casellabronze.com](http://www.casellabronze.com)): "Gold Light Gallery is looking for new artist members! Join a growing cooperative art gallery and market your work at 30 West Bridge Street in New Hope, PA. Find out more at [www.goldlightgallery.com](http://www.goldlightgallery.com) or contact John Murdoch at 267-221-6046, [info@goldlightstudios.org](mailto:info@goldlightstudios.org)."

---

**John Ennis** will be teaching a portrait workshop at Jerry's Artarama in Princeton, NJ, Saturday May 17 and Sunday May 18th. John is also teaching a landscape class there on Mondays in May. For more information go to <http://princeton.jerrysartaramastores.com/workshops>



---

### From Ken Weiner: Photography Services for Artists

Do you need high-quality digital images of your work? Is glare a problem? Color balance not quite right? I can help you get great images of your 2-D or 3-D work suitable for digital file output or output for presentation and hard-copy presentation.

I offer flexible availability, willingness to travel, special pricing for Sketch Club members. Contact: Ken Weiner; [note2kenweiner@verizon.net](mailto:note2kenweiner@verizon.net); 215-280-6325.

## Open Workshop Schedule

**All workshops are open to the public. There is no need to register before attending.** You do NOT have to be a member of the Philadelphia Sketch Club to participate in the workshops. Our workshops are open to anyone who is interested in drawing, painting or printmaking. All skill levels are welcome.

### Fees:

\$9/session model workshops    \$8 members

\$10/session printmaking workshop

All workshops \$6 for full-time students.

### Life Model

**Mondays** – Individual 20 minute poses: 6:30 PM to 9:30 PM

Monitors: Donald Leong, Mike DeLuca, Jeff Kimmel

**Tuesdays** – Extended pose\*: 12:00 PM to 3:00 PM

Monitor: Jacqueline Barnett

**Wednesdays** – Extended pose: 6:30 to 9:30 PM

Monitor: Vince Docktor

**Saturdays** – Extended pose: 9:30 AM to 12:30 PM

Monitor: Vince Docktor

\* same pose for 2 consecutive weeks

**Please note:** Those who use oil paints should bring their own container to remove used turpentine. We ask that you use odorless thinner.

### Costumed Model

**Thursdays** –

Extended pose\*

12:00 PM to 3:00 PM

Monitor: Marilee Morris

### Printmaking

**Tuesdays**

10:00 AM to 2:00 PM

Monitor:

Elizabeth H. MacDonald



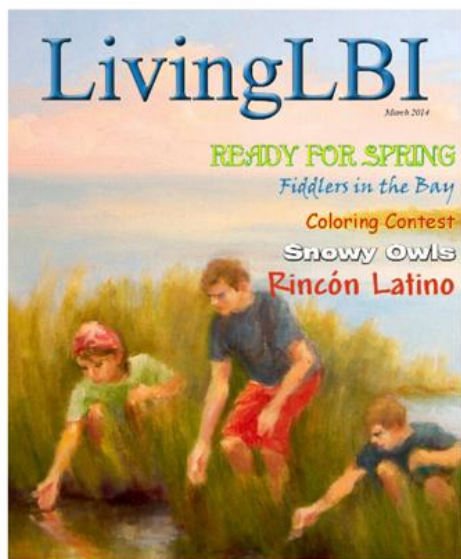
## Art Natters: Member News

**Sandy Askey-Adams, PSA writes:** "Come see and enjoy the "5th Annual Traditional Artists Show and Sale" on May 9, 10, and 11 -- Mother's Day weekend at Rolling Green Farm, Rt 202 and Aquetong Rd., Solebury, PA. It is a cross-section of local artists working in a traditional theme. I am pleased to be a part of this show with 10 other artists. Showing is one of my pastel paintings that will be in the show.

This exhibition and sale benefits the Bucks County SPCA. Silent Auction on Friday, May 9th. Opening Reception is Friday, May 9, 5 - 9 pm. Please support the show by going to [www.facebook.com/TraditionalArtistShowBucksCounty](http://www.facebook.com/TraditionalArtistShowBucksCounty)."



*"Serene Moments" by Sandy Askey-Adams, 18" x 24", pastel*



Cover image: "Turtle Release", oil on canvas, 24 x 24 inches by Susan Barnes

**Susan Barnes'** painting "Turtle Release" is featured on the cover of the March issue of "LivingLBI" magazine.

## Art Natters: Member News (continued)

**Brenda L Bechtel's** watercolour, "Memories of Infinitude" is one of 53 paintings chosen by President Emeritus, Salmagundi Club, Claudia Seymour in Providence Art Club's "2014 Nationwide All Media Open Juried Exhibition" through May 9. Awards will be announced during the opening reception April 27. "Ladybug Picnic ~ Chanticleer" Oil on linen has been chosen by juror John Udvardy to be installed in Bristol Art Museum's "50 year Celebration Exhibition" on view May 2 through July 6 in Bristol Rhode Island. Awards will be announced during the opening gala May 2. Also in Rhode Island, South County Art Association includes Brenda's Oil on linen, "Tea with H. F. at Three ~ Winterthur" in "Open Paint & Draw Juried Exhibition, 2014" through May 24th. Brenda would like to encourage all Members of the Club to Vote on May 9th or send your proxy ballot. Voting is especially important this year!



*"Afternoon Retreat", oil on linen by Brenda Bechtel ►*

**Robert Bohné** will be the first artist to show at West Chester's newest gallery, the "Church Street Gallery" located at 12 North Church St. in West Chester Pa. Church Street Gallery is the creation of West Chester artist John Suplee and his wife Carol Giblin. The gallery will focus on local and regional artists.

Robert Bohné will be showing approximately 40 works of art. A combination of representational paintings and drawings completed within the past 5 years. There will be two openings. The first will be on April 26th from 1 pm to 6 pm and the second will be West Chester's First Friday opening on the night of May 2.



"Lambertville Morning", by **Dot Bunn** received the "People's Choice Award" at the 33rd annual "Lambertville and the Surrounding Area" exhibit hosted by the Robert Beck Gallery in Lambertville. The exhibit benefits the Lambertville Historical Society.

◄ *"Lambertville Morning" by Dot Bunn*

## Art Natters: Member News (continued)

**Eleanor Evans** and her four children participated in the Lambertville Chamber of Commerce's Annual SHADfest Poster Exhibit, which was held in April 26- 27. Her piece is "Beauty, Music, Nature- Billie Holiday with her Iconic Flower". Eleanor will also be part of the "Doylestown Art Days" in June 5-8; her work will be displayed in Gross's Gourmet Foods on Main Street.

Also, for the 2014 Bucks Happening "Best of" List, Eleanor placed as a second finalist in the category of 'Artist'.

*"Beauty, Music, Nature- Billie Holiday with her Iconic Flower" by Eleanor Evans ►*



**Jeff Gola** will have 3 paintings in a group show called "America Seen: 8 Artists" at Fischbach Gallery in Chelsea, NY. The show opens on May 1 and runs until June 7.

◄ *"Sifting Sands Motel", egg tempera on panel by Jeff Gola*

New Member **Nancy E. F. Halbert** has been juried into two upcoming shows:

- "Jewels and Treasures", at the Main Line Art Center, Haverford, PA, Show Dates - May 9 — June 6 , with an Artist Reception and Garden Party on Saturday, May 31, 1:00 PM — 3:00 PM. [www.mainlineartcenter.org](http://www.mainlineartcenter.org)
- "SECRETS" at Goggleworks Art Center, Reading, PA. Opening reception on Sunday, May 12th from 11 am to 4 pm. The show runs through June 30th, 2014. [www.goggle.org](http://www.goggle.org).

Nancy's website is [www.nancyhalbertart.com](http://www.nancyhalbertart.com)

**Su Knoll Horty** will be exhibiting "Essence", oil on canvas, 30" x 40", in the Biggs Museum of American Art in Dover, DE. "The Biggs Picture, Landscapes by Regional Artists 2014 Juried Exhibition" will be on display May 17<sup>th</sup> – July 20<sup>th</sup>. Opening reception is May 17<sup>th</sup>, 1-4PM.

*"Essence", oil on canvas, 30" x 40" by Su Knoll Horty ►*





## *Art Natters: Member News (continued)*

May will be a busy month for **Doris Peltzman**. Her new work: Oils on Plexiglas Tondos (round paintings) and others will be featured at the William Ris Gallery in Stone Harbor, New Jersey. Visit their Facebook page to get a peek.

She will be part of the May Exhibit at ArtistsHouse Gallery in Philadelphia, PA: "Flora and Fauna Exhibition", Opening First Friday, May 2, 2014 with a "Meet The Artist" Reception on Sunday, May 4, 2014.

Doris will also have 3 works featured at The Main Line Art Center's "JEWELS AND TREASURES" Benefit and Exhibition in celebration of the 50th anniversary of providing Accessible Art Programs for artists with disabilities. All 3 of her oil paintings are on plexiglas surfaces.

A Benefit Preview Party will take place at The Main Line Art Center on Friday, May 9 from 6:30pm to 10:00. The exhibition will run from May 9-June 6, 2014.

There will be an Artist Reception and Garden Party Celebrating 50 years of Accessible Art, Saturday, May 31 from 1:00 to 3:00. For information on this Main Line event contact : Main Line Art Center in Haverford, PA.



**Deborah Riccardi's** "Water Pump, Papua New Guinea", oil on canvas is on exhibition at 71<sup>st</sup> Annual Awards Painting Show at Cheltenham Center for the Arts, 439 Ashbourne Road, Cheltenham, PA 19012 until May 11<sup>th</sup>, [www.cheltenhamarts.org](http://www.cheltenhamarts.org). She also received an "Outstanding Part-Time Faculty Award in the Arts" from Bucks County Community College for 2013-2014. Also Deborah's "A Collection of Student Quotes: Defining Art and Beauty" and her painting "Boy on a Drum, Papua New Guinea" were recently published in Montgomery County Community College's Art and Literature Magazine "Forty Three".

## *2014 PSC Main Gallery Exhibition Schedule*

<b>PSC Members Benefit Show: May 9 – 31, 2014</b> Chair: Faad Ghoraishi Drop-off: May 2-3, 2014 No jury, no unaccepted work. PSC Members only. Reception: May 18, 2014 - 2-4 PM Pickup: June 1-2, 2014	<b>2014 Absolutely Abstract : Aug 22 to Sep 13, 2014</b> Chair: Steve Iwanczuk Drop-off: Aug 15,-16, 2014 Jury: Aug 17, 2014 Reception: Aug 24, 2014 - 2-4 PM Pickup accepted works: Sep 14-15, 2014
<b>PSC Benefit Show: June 13 – 28, 2014</b> Chair: Pearl Mintzer Online entries only : Deadline May 25 Open Juried Show benefitting Philadanco. Reception: June 15, 2014, 2-4 PM More info at: <a href="#">Philadanco Prospectus 2014 v 4</a>	<b>2<sup>nd</sup> Annual Large Format Show: Sept. 26 to Oct. 18, 2014</b> Chair: Faad Ghoraishi Online entries only Reception: Sept. 28, 2014 - 2-4 PM Pickup Accepted works: Oct. 19-20, 2014
<b>2014 PSC Athenaeum's 200th Anniversary Exhibition: June 29 – Aug 8, 2014</b> Deadline June 1. This is an online entry OPEN juried exhibition. . Reception: June 29, 2014, 2-5 PM at Athenaeum <a href="#">Click here for prospectus</a>	<b>Philustration Show: Oct 31 to Nov 15, 2014</b> Chair: Rich Harrington Online entries only Reception: Nov. 2, 2014 - 2-4 PM Pickup All Works: Nov 16-17, 2014
<b>2014 PHOTOgraphy Show : July 18 to Aug. 9, 2014</b> Chair: Melvin A. Chappell Drop-off: July 11-12, 2014 Jurying: July 13, 2014 Reception: July 20, 2014 - 2-4 PM Pickup accepted works: Aug 10-11, 2014	<b>Legacy Show: Nov 21 to Dec 13, 2014</b> Chair: Rich Harrington Drop-off: Nov 14-15, 2014 Reception: Dec. 7, 2014 - 2-4 PM Pickup All Works: Dec. 14-15, 2014





Illustration by Rich Harrington

"The Portfolio": The newsletter of the Philadelphia Sketch Club is published monthly. Editor: Jeff Gola. Send your member news, announcements and corrections to [portfolio@sketchclub.org](mailto:portfolio@sketchclub.org). The due date for all materials is one week before the end of the month.

**The Philadelphia Sketch Club**

235 S Camac Street  
Philadelphia, PA 19107

(215) 545-9298

<http://sketchclub.org/>

[executivedirector@sketchclub.org](mailto:executivedirector@sketchclub.org)

**Officers:**

President: Richard Harrington  
Vice President: Kenneth Deprez  
Secretary: Christina Valente  
Treasurer: William Patterson

**Board of Directors:**

Frances Carter  
Melvin Chappell  
Faad Ghoraishi  
Chuck Hilpl  
Pearl Mintzer  
Amanda Stevenson  
Timothy Shickley  
Ken Weiner  
Joe Winter