

June 2014



SUMMER 2014

Inside "The Portfolio":

Shows in the Main Gallery: p. 2
Currently in the Stewart Room Gallery: p. 3
June Dinner Meeting: p. 4
2014 Stewart Room Gallery Schedule: p. 4
2014 Main Gallery Schedule: p. 5
PSC Flash Salon: p. 5
New Extended Pose Workshop: p. 6
Open Workshop Schedule: p. 6
Notices from Members: p. 6
Art Natters: p. 7

Send your member news, announcements and corrections to portfolio@sketchclub.org. The deadline for ALL submissions is 1 week before the end of the month.

Results of the 2014 PSC Election:

President: Rich Harrington
Vice-President: Kenny Deprez
Secretary: Fran Carter
Treasurer: Bill Patterson
Non-Officer Directors:

- Alice Chung
- Janet Cooke
- Vincent Docktor
- Stephen Iwanchuk
- Ken Weiner

Should photography be included in the Works on Paper show?
- No
Should digital art be included in the Works on Paper show?
- No

2014 PSC Philadanco Benefit Art Exhibition

June 13 – 28 at the PSC, Reception on Sunday June 15, from 1-5 PM at PSC.

See Prospectus at: <http://sketchclub.org/wp-content/uploads/2014/01/Philadanco-Prospectus-2014-v-4.pdf>

- Notification by email June 3 after 5 pm
- Delivery: June 6-7, 2014, 1 – 5 PM
- Pickup:, June 29 and July 2, 2014, 1-5 PM


Jurors:

Cecelia Fitzgibbon, President of Moore College of Art

Lisa Hanover, CEO of the Michener Museum


Nelson Shanks, Renowned portrait artist and Founder & Artistic Director of Studio Incamminati






Call for Entry

**2014 Celebration of the
Athenæum of Philadelphia's
200th Anniversary Art Exhibition**



June 29 – August 8, 2014 at the Athenæum
Monday – Friday, 9:00 AM – 5:00 PM
Reception:
Sunday, June 29, 2014, 2:00 – 5:00 PM at the Athenæum

Open, juried exhibition. All two-dimensional media welcome.
Subject matter: Interior/exterior of the Athenæum and a large selection
of National Historic Places in Philadelphia.
(See www.philaathenaeum.org/competition.html for complete details.)
Deadline for entry: June 1, 2014



The Athenæum of Philadelphia
219 South 6th Street • Philadelphia, PA 19106
(East side of Washington Square below Walnut Street)
215-925-2688 | www.philaathenaeum.org
Exhibit co-chairs: Ted Lewis and John Schmiechen

2014 Athenæum of Philadelphia's 200th Anniversary Art Exhibition

June 29 – August 8, 2014 at the Athenæum of Philadelphia

The Athenæum is located on the east side of Washington Square below Walnut St. at 219 S. 6th St: <http://www.philaathenaeum.org>

Reception : Sunday June 29, 2014, 2 - 5 PM at the Athenæum

See Prospectus at:

<http://www.philaathenaeum.org/pdf/AthenaeumArtExhibitionProspectus2014.pdf>

Enter Online at

<http://www.philaathenaeum.org/competition.html#dashboard>

- Entry Deadline: **Sunday June 1, 2014 at midnight**
- Notification: June 11, 2014.
- Delivery: June 20 – 21, 2014, 12:00 – 5:00 PM at the Athenæum
- Pickup: Aug 11-12, 2014 9AM-6 PM at the Athenæum

Currently in the Stewart Room Gallery:

The PSC presents “The Art of Entertainment” featuring the work of PSC members **Tom Foral** and **Pearl Mintzer**, June 1-29 in the Stewart Room Gallery. The Opening Reception will be held on **Sunday, June 8** from 2-4 pm. Gallery hours during the show are Fridays, Saturdays and Sundays from 1-5 pm.

Tom Foral’s paintings and portraits include Bill Blass, Eudora Welty, Audrey Hepburn, Gwen Verdon, and Her Serene Highness Grace Kelly, which hangs as the centerpiece in the Princess Grace Theatre in Monaco. Foral and Princess Grace continued their friendship until her untimely death. Foral is currently represented by the River Queen Gallery in Lambertville, and his paintings are in private collections worldwide. His studios are based in Bucks County, New York City, and Venice, Italy.

A painter throughout his life, he has also designed home furnishings and acted on Broadway, in movies, on television, and in regional theaters. His theatrical work varies; his career has ranged from working on Woody Allen’s first Broadway production (“Don’t Drink the Water”), to Shakespearean tragedies, to television soap operas such as “Dark Shadows” and “Search for Tomorrow.” Between acting, Foral worked with a home furnishings company as a designer. His visual art also showcases a broad variety. His aforementioned oil portraits are accompanied by satirical figurative work, graphite drawings, and mixed media work. Foral describes himself as “a realist with a nod to fantasy and theatricality,” likening his artistic production to his performance. His work can be seen at his website, <http://www.tomforal.com>.

Pearl Mintzer graduated with a BA in Fine Arts and an MFA from Brooklyn College, and studied with Ad Reinhardt and Philip Pearlstein. Dramatic color” and whimsy are the defining characteristics of her work. Pearl intensifies her playful images with wild and dazzling colors that jump off the canvas. She is a designer, photographer, digital artist, graphic artist and painter. Her style is photo realism with infusion of levity and wild, vibrant color. Pearl lives in both Philadelphia and New Hope, Pa. She attributes a lot of her inspiration to the supportive groups or artists that also live in Bucks Co, Pa and surrounding New Jersey. Along with her work with the Philadelphia Sketch Club, Pearl serves on the Board of Directors of the New Hope Historical Society, the Board Of Directors of the Bucks County Opera Association, and the Advisory Board of the Friends Of The Delaware Canal. Her work can be seen at <http://www.pearlmintzer.com>.



June 13 Dinner Meeting

Our next Members' dinner meeting will be on Friday, June 13th

- 5:15 PM Social Period Begins
- 6:15 PM Speaker- Mike Zaikowski, Profiles Fine Art Printmaking Studio
- 7:15 PM Dinner

The Menu:

- Caesar Salad
- Veal Scaloppini
- Roasted Red Bliss Potatoes
- Pasta Primavera
- Assorted Pies

Our speaker will be Mike Zaikowski of Profiles Fine Art Printmaking Studio of Chestnut Hill, PA. Join Mike for an introduction to the three basis of giclée printmaking: scanning, proofing and printing. Mike will discuss the options available at each step of the process, explaining what to expect and discussing the pitfalls to avoid. He'll bring lots and lots of samples for you to review, and will welcome your questions. More about Profiles Fine Art Printmaking Studio can be seen at their website, www.profilesstudio.com.

Please RSVP to this meeting by Wednesday, June 11 by emailing executivedirector@sketchclub.org, or by calling and leaving a message at 215-545-9898. The cost of dinner is \$16.00 for members and \$18.00 for their non-member guests.

2014 Stewart Room Exhibitions

June 1-29, 2014	Pearl Mintzer(East Side) Tom Foral (West Side)	Reception: June 8, 2-4 PM
July 1-27, 2014	Patricia Ilves-Corressel (East Side) Faad Ghoraishi (West Side)	Reception: July 3, 2-4 PM
August 1-31, 2014	Patricia Ilves-Corressel (East Side) Barbara March (West Side)	Reception: Aug. 11, 2-4 PM
September 1-28, 2014	2nd PSC Invitational Artist Show (East and West Side: Artist TBD)	Reception: Sept 15, 2-4 PM
October 1-30, 2014	Thomas J. Foral (East Side) William C. Patterson (West Side)	Reception: Oct. 3, 2-4 PM
November 1-30, 2014	3rd PSC Invitational Artist Show (East and West Side: Artist TBD)	Reception: Nov. 3, 2-4 PM
December 1-30 2014	2014 Annual Volunteers Exhibition (East and West Side)	Reception: Dec. 8, 2-4 PM

To all exhibitors: Please send Faad Ghoraishi (faad@ghoraishi.com) your digital posters one month prior to your show so we can advertize it to our mailing list. We recommend you arrange your opening reception to coincide with any major exhibition reception for that month in the main gallery. **Also, please send an image of your work and a short bio or artist's statement to Jeff Gola (portfolio@sketchclub.com) for inclusion in the newsletter.**

2014 PSC Main Gallery Exhibition Schedule

PSC Benefit Show: June 13 – 28, 2014 Chair: Pearl Mintzer Open Juried Show benefitting Phildanco. Reception: June 15, 2014, 2-4 PM More info at: Philadanco Prospectus 2014 v 4	2nd Annual Large Format Show: Sept. 26 to Oct. 18, 2014 Chair: Faad Ghoraishi Online entries only Reception: Sept. 28, 2014 - 2-4 PM Pickup Accepted works: Oct. 19-20, 2014
2014 PSC Athenaeum's 200th Anniversary Exhibition: June 29 – Aug 8, 2014 Deadline June 1. This is an online entry OPEN juried exhibition. Reception: June 29, 2014, 2-5 PM at Athenaeum Click here for prospectus	Philustration Show: Oct 31 to Nov 15, 2014 Chair: Rich Harrington Online entries only Reception: Nov. 2, 2014 - 2-4 PM Pickup All Works: Nov 16-17, 2014
2014 PHOTOgraphy Show : July 18 to Aug. 9, 2014 Chair: Melvin A. Chappell Drop-off: July 11-12, 2014 Jurying: July 13, 2014 Reception: July 20, 2014 - 2-4 PM Pickup accepted works: Aug 10-11, 2014	Legacy Show: Nov 21 to Dec 13, 2014 Chair: Rich Harrington Drop-off: Nov 14-15, 2014 Reception: Dec. 7, 2014 - 2-4 PM Pickup All Works: Dec. 14-15, 2014
2014 Absolutely Abstract : Aug 22 to Sep 13, 2014 Chair: Steve Iwanczuk Drop-off: Aug 15,-16, 2014 Jury: Aug 17, 2014 Reception: Aug 24, 2014 - 2-4 PM Pickup accepted works: Sep 14-15, 2014	

PSC Flash Salon

The PSC Flash Salon is a solo or group exhibition of very short duration, anywhere from 5 days to 9 days, in our historic main gallery at 235 S. Camac St. in Philadelphia. It is a PSC juried show open to all, but specifically targeting post-education pre-career artists and curators in the Philly area. More information on the application, rules and layout of the exhibition space can be seen on the PSC website at <http://sketchclub.org/flash-salon/>

Available times for upcoming PSC Flash Salons are:

- Flash Salon 4 – July 2 – July 11, 2014 – 9 day session
- Flash Salon 5 – Aug 11-15, 2014- 5 day session
- Flash Salon 6 – Sept 15-19, 2014- 5 day session
- Flash Salon 7 – Oct 20-24, 2014- 5 day session
- Flash Salon 8 – Nov 19-28, 2014 – 9 day session
- Flash Salon 9 – Dec 17-26, 2014 – 9 day session

New Monday Night Workshop: Extremely long pose

Starting in July, the PSC will offer workshop participants the opportunity to work for extended times on a single pose. A single pose will extend the entire workshop session. Multiple-session poses will also be offered.

Open Workshop Schedule

All workshops are open to the public. There is no need to register before attending. You do NOT have to be a member of the Philadelphia Sketch Club to participate in the workshops. Our workshops are open to anyone who is interested in drawing, painting or printmaking. All skill levels are welcome.

Fees:

Model workshops: \$8/session members, \$9/session for non-PSC members

Printmaking workshop: \$10/session

All workshops \$6 for full-time students.

Life Model

Mondays – Extended pose (multi-session)

Monitors: Robert Bohne, Vince Docktor, Dan Kuetemeyer

Tuesdays – Extended pose*: 12:00 PM to 3:00 PM

Monitor: Jacqueline Barnett

Wednesdays – Extended pose: 6:30 to 9:30 PM

Monitor: Vince Docktor

Saturdays – Extended pose: 9:30 AM to 12:30 PM

Monitor: Vince Docktor

Costumed Model

Thursdays –

Extended pose*

12:00 PM to 3:00 PM

Monitor: Marilee Morris

Printmaking

Tuesdays

10:00 AM to 2:00 PM

Monitor:

Elizabeth H. MacDonald

* same pose for 2 consecutive weeks

Please note: Those who use oil paints should bring their own container to remove used turpentine. We ask that you use odorless thinner.

Notice from Our Members

From Ken Weiner: Photography Services for Artists

Do you need high-quality digital images of your work? Is glare a problem? Color balance not quite right? I can help you get great images of your 2-D or 3-D work suitable for digital file output or output for presentation and hard-copy presentation. I offer flexible availability, willingness to travel, special pricing for Sketch Club members. Contact: Ken Weiner; note2kenweiner@verizon.net; 215-280-6325.

Art Natters: Member News

Brenda Bechtel is participating in the following shows:

- Connecticut Academy of Fine Arts 103rd Exhibition includes "Blue Skies Smiling at Me" Oil on Linen, hosted by Mystic Art Center, CT June 13 - July 26, 2014 Awards reception Thursday June 26, 6 - 8 pm.
- Catherine Lorillard Wolfe Art Club includes "Windchimes" and "St Andrews Sunset Glow" in the "2014 Annual Members Exhibition" Hosted by Salmagundi Club through June 7, 2014.

For more details, see www.Angefire.comArt2/Brookside

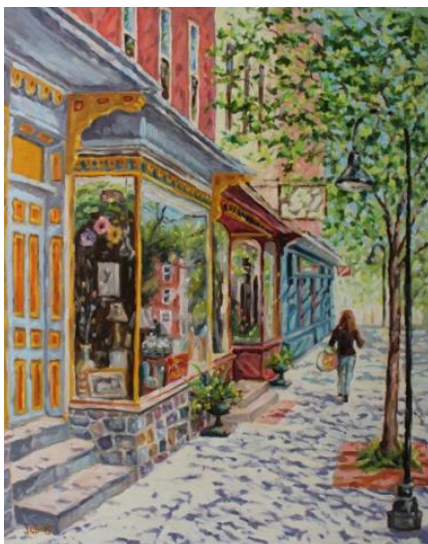
"Blue Skies Smiling at Me", Oil on Linen by Brenda L Bechtel ►



Aida Birritteri (www.aidabirritteri.artspan.com) was recently elected to the Board of the Garden State Watercolor Society (GSWS: www.gswcs.com) as Co-Exhibition Chair. She is currently exhibiting with the GSWS in the "Associate Members and Non Members Exhibition 2014" at the Middletown Arts Center, Middletown, NJ, open to the public 5/5 to 6/1 Monday through Saturday 10am to 6pm.

Aida will also be doing a 1 hour Still Life Watercolor Demo for the GSWS Signature Members Exhibit on June 25th from 12:15 to 1:15 at the D&R Greenway, 1 Preservation Place, Princeton, NJ 08540.

Also, on June 21st and 22nd, Aida will be teaching a Watercolor Workshop, "Watercolors Indoor and Outdoor" at the Reiglesville Library in Reiglesville Pa.



Jean Childs Buzgo will have 13 paintings on exhibit at the Restaurant and Gallery, Caffe Galleria on 23 North Union Street in Lambertville, NJ in a show titled "Changes". The show is being run by River Queen Artistans Gallery in Lambertville. She is exhibiting mostly street scenes of Lambertville, NJ, river scenes and paintings of local landmarks. Show runs until June 17th. For more info. please visit her Facebook business page:

<https://www.facebook.com/JeanChildsBuzgoArtist> or her website: jeanchildsbuzgo.com . Jean currently has work in 2 other shows and you can find more info about them on either her Facebook page or website as well.

Jean's painting "A Stroll Down Union Street" was featured in the Bucks County Herald advertising the show.

◀ "A Stroll Down Union Street" by Jean Childs Buzgo

Art Natters: Member News (continued)



The bronze work of New Hope sculptor, **Christiane Casella** has been receiving high acclaim lately. Her bronze, "Bye for Now", was featured in the Central Bucks Byers Juried Art Exhibition and the bronze, "Conversation", was featured in the Sculpture New Hope 2014 Juried Show. Casella was also invited to participate in the Central Bucks Chamber of Commerce Artist Studio Tour also in May. And she was invited to speak at the Art Club of the Orchid Island Golf & Beach Club, Vero Beach, Florida, where she shared the complex process of creating bronze sculpture. See more about Christiane at www.casellabronze.com



"Conversation" (above, left) and "Bye for Now" (right), bronze sculpture by Christiane Casella

Ted Lewis and **John Schmiechen** co-chaired the 3rd Annual Passyunk Square Civic Association Art Auction and Sale on March 20th. It is the major fundraiser for the Association and resulted in a record net profit of over \$5,000. They are currently co-chairing the 2014 Celebration of the Athenaeum of Philadelphia's 200th Anniversary Art Exhibition from June 29th to August 8th at the Athenaeum.

Recently, John was invited by the Cosmopolitan Club to exhibit over thirty works in a one-man show for six weeks resulting in numerous sales. The Club also sold his work as part of their Christmas bazaar.

Lois Schlachter is currently exhibiting at Harrah's Casino in Chester and the Art Gallery at Franklin Commons in Phoenixville. She recently participated in shows at The Plastic Club and The Sketch Club in Philadelphia, the Simply Abstract show at Bethlehem City Hall, Perkiomen Valley Art Center Spring Show and the North Penn Art Alliance where she won a prize.

Lois will also be exhibiting at the Artbridge 20th Annual Open Juried Show in New Hope, at Art on Avenue of the States in Chester, and at the 86th Annual Juried Exhibition of the Art Association of Harrisburg, PA. She is also exhibiting at the Lancaster County Art Association National Juried Exhibition in Strasburg, PA.

To see Lois' work visit her website at www.fineartbylois.com

Art Natters: Member News (continued)

Beth Schoenleber will be showing her watercolors and Don Schoenleber his photography at the Stover Mill Gallery, 852 River Road (Rt. 32) in Erwinna PA, on Saturdays and Sundays of June 28-29, July 5-6, 19-20 and 26-27 from 1 to 5 pm. The reception is on June 29. For more information, see their website at www.dwschoenleber.com.



Watercolors by Beth Schoenleber



Photography by Don Schoenleber

Bill Scott curated the show “Before, Again”, showing at the Gross McCleaf gallery in Philadelphia from June 4 to 28th. The show features works by Marc Blumthal, Evan Fugazzi, Samantha Mitchell, Brian Boutwell, Lauren Garvey, Benjamin Passione, Amanda Bush, Jordan Graw, Christian Platt, Michael Ciervo, Eric Huckabee, Brad Thorstensen, Cindi Ettinger, Todd Keyser, Magda Vitale, Jesse Friedman, Drew Kohler, and John Isaac Williams. The opening reception is Friday, June 13, 5 - 7 pm. More info can be seen at <http://www.grossmccleaf.com/upcoming.html>.

Pat Wilson-Schmid received a second place award for the painting entitled “Porcelain Clouds”. The show was held by the Perkiomen Valley Art Center in Harleysville. Pat’s work is also showing in the Lehigh Art Alliance in Bethlehem, at Harrah’s Casino in Chester, at the Philadelphia Sketch Club and at the Plastic Club in Philadelphia. Pat is also a part of a group show at the Off-The-Wall Gallery in Skippack. For more information check out her website at <http://www.fineartbypatwilson-schmid.com>.

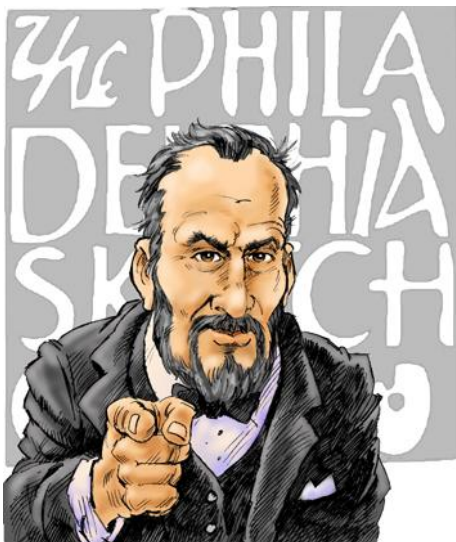


Illustration by Rich Harrington

Call for Volunteers

We still have important positions within the PSC that need volunteers to take over! Contact Faad Ghoraishi at fghoraishi@yahoo.com to help out your club with future events.

"The Portfolio": The newsletter of the Philadelphia Sketch Club is published monthly. Editor: Jeff Gola. **Send your member news, announcements and corrections to portfolio@sketchclub.org. The due date for all materials is one week before the end of the month.**

The Philadelphia Sketch Club

235 S Camac Street
Philadelphia, PA 19107

(215) 545-9298

<http://sketchclub.org/>

executivedirector@sketchclub.org

Officers:

President: Richard Harrington
Vice President: Kenneth Deprez
Secretary: Fran Carter
Treasurer: William Patterson

Board of Directors:

Alice Chung
Janet Cooke
Vincent Docktor
Stephen Iwanchuk
Ken Weiner