

September 2014

Back To ~~School~~ THE PHILADELPHIA SKETCH CLUB!



Illustration by Rich Harrington

Inside "The Portfolio":

2014 Gala: p. 2

Sept Dinner Meeting: p. 4

2014 Exhibition Schedules: p. 4

Open Workshop Schedule: p. 7

Art Natters: p. 9

Send your member news, announcements and corrections to portfolio@sketchclub.org. The deadline for ALL submissions is 1 week before the end of the month.

2nd Annual PSC Large Format Art Show Sept 26 – Oct 18, 2014

This is our second annual large format art show intended to exhibit works that are normally not shown at PSC due to size restrictions in other open juried shows at PSC.

Works Eligible:

- Any 2-dimensional works utilizing any medium, including digital art
- All submitted work must be offered for sale during the exhibition.
- **Minimum size is 40 inch, maximum is 65 inch on any side EXCLUDING frame.**
- All work must be framed and wired and ready for hanging. Improperly framed pieces will be rejected.

Online Submissions deadline: Sat. Sept 13, 2014 @midnight
Submit online and see more info at: www.sketchclub.org

Reception: Sunday Sept. 28, 2014, 2---4 PM, awards at 3 PM.

September 2014

2014 Philadelphia Sketch Club Gala



From Bill Patterson, Chair, 154th Anniversary Gala:

The Philadelphia Sketch Club will be hosting its 154th Anniversary Gala on October 18, 2014, and will be honoring three of the nation's top artists: Elizabeth Osborne, Robert Beck and Moe Brooker. The Gala will feature a live art auction, silent auction, hors d'oeuvres and dinner buffet, cocktails, and music. Black tie, business or creative attire are acceptable attire. The Gala brings together our members, patrons, supporters, friends, sponsors, neighbors as well as businesses for an evening of celebration to support the Philadelphia Sketch Club.

We invite you to help us make the 2014 Gala a smashing success by participating in our event. By doing so, you will be able to contribute to the vibrancy of our neighborhood by supporting our local cultural community and target new customers.

Save the Date Saturday, October 18th, 2014

Elizabeth Osborne

Robert Beck

Moe Brooker

7 pm to Midnight

The Philadelphia Sketch Club's
154th Anniversary Gala honoring
Elizabeth Osborne, Robert Beck
and Moe Brooker

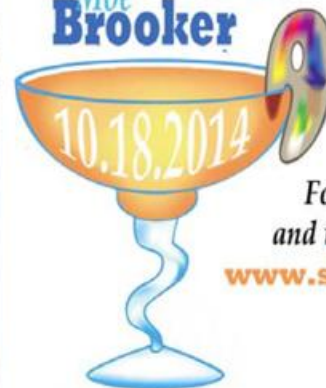
Medal Presentation,
Live Art Auction,
Silent Auction,
Cocktails, Buffet, Music

For more information
and to buy tickets visit

www.sketchclub.org

or call

215-545-9298



**Come toast the
Courage of Creativity!**



Continued on next page ►

September 2014

Continued from previous page;

As a member of the Sketch Club, you can make our event a success by putting some thought into how you can help with this effort. You can participate by:

- Purchasing tickets for you a guest(s).
- Encouraging you friends to purchase tickets and attend. Ticket may be purchased at: [Sketch Club Gala Tickets](#) or you can give us their names and addresses and we will make sure they are sent an invitation.
- Contact a friend or business that may donate an item to our silent auction. Donors of silent auction items will be recognized in our program booklet.
- Contact an individual or business that would place an ad in our program booklet.
- Contribute an additional donation to the Gala fund. Any support of \$1,000 or more will get sponsor recognition in the program booklet.

Founded in 1860 the Philadelphia Sketch Club is oldest organization for artists in America. We have more than 275 members, young and venerable, accomplished and burgeoning artists, as well as dedicated volunteers, and patrons of the arts that come to our historic headquarters to draw, paint, print, socialize, and support the arts. By supporting the 2014 gala, you will help us grow our educational programs, workshops and community outreach. Your contribution will enrich the cultural profile of the Club and artistic community.

Please visit www.sketchclub.org for more information and instructions on how to join our effort, or call me at 267-664-2434. You can also email any questions to bpatterson2045@comcast.net. Thank you for your participation in, and support of the Philadelphia Sketch Club's 154th Anniversary Gala.

SILENT AUCTION DONATIONS will be listed on the Philadelphia Sketch Club website and in the Gala Program Book.

ITEMS AND DESCRIPTIONS MUST BE RECEIVED BY OCTOBER 3, 2014

Any questions, please contact Bill Patterson at 267-664-2434 or bpatterson2045@comcast.net

September 2014

September 12 Dinner Meeting

Our next Members' dinner meeting will be on Friday, Sept. 12th.

- 5:15 PM Social Period Begins
- 6:15 PM Speaker- To Be Determined
- 7:15 PM Dinner

Please RSVP to this meeting by Wednesday, Sept. 10 by emailing executivedirector@sketchclub.org, or by calling and leaving a message at 215-545-9898. The cost of dinner is \$16.00 for members and \$18.00 for their non-member guests.

NOTE: There will be no October dinner meeting, due to the Gala.

The Menu:

- Caesar Salad
- Chicken Marsala
- Grilled Vegetable Medley
- Rice Pilaf
- Baked Stuffed Shells
- Assorted Cakes

2014 PSC Main Gallery Exhibition Schedule

2014 Absolutely Abstract : Aug 22 to Sep 13, 2014 Chair: Steve Iwanczuk Drop-off: Aug 15,-16, 2014 Jury: Aug 17, 2014 Reception: Aug 24, 2014 - 2-4 PM Pickup accepted works: Sep 14-15, 2014 Click here for prospectus	2nd Annual Large Format Show: Sept. 26 to Oct. 18, 2014 Chair: Faad Ghoraishi Online entries only Reception: Sept. 28, 2014 - 2-4 PM Pickup Accepted works: Oct. 19-20, 2014
Philustration Show: Oct 31 to Nov 15, 2014 Chair: Rich Harrington Online entries only Reception: Nov. 2, 2014 - 2-4 PM Pickup All Works: Nov 16-17, 2014	Legacy Show: Nov 21 to Dec 13, 2014 Chair: Rich Harrington Drop-off: Nov 14-15, 2014 Reception: Dec. 7, 2014 - 2-4 PM Pickup All Works: Dec. 14-15, 2014

2014 Stewart Room Exhibitions

September 1-28, 2014	2nd PSC Invitational Artist Show (East and West Side: Artist TBD)	Reception: Sept 15, 2-4 PM
October 1-30, 2014	Janet Cooke (East Side) William C. Patterson (West Side)	Reception: Oct. 3, 2-4 PM
November 1-30, 2014	3rd PSC Invitational Artist Show (East and West Side: Artist TBD)	Reception: Nov. 3, 2-4 PM
December 1-30 2014	2014 Annual Volunteers Exhibition (East and West Side)	Reception: Dec. 8, 2-4 PM

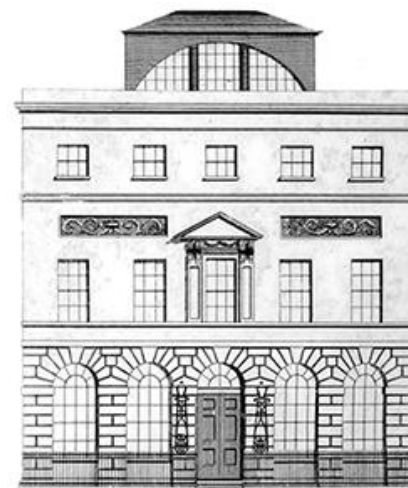
To all exhibitors: Please send Faad Ghoraishi (faad@ghoraishi.com) your digital posters one month prior to your show so we can advertize it to our mailing list. We recommend you arrange your opening reception to coincide with any major exhibition reception for that month in the main gallery. **Also, please send an image of your work and a short bio or artist's statement to Jeff Gola (portfolio@sketchclub.com) for inclusion in the newsletter.**

Recent Events:

2014 Athenaeum's 200th Anniversary Art Exhibition

Members Ted Lewis and John Schmiechen chaired the 200th Anniversary Art Exhibit and Sale for the Athenaeum of Philadelphia, a month long open juried event held in the Athenaeum's Dorothy W. and F. Otto Hass Gallery on Washington Square. Thirty nine works of art were selected from nearly 200 entries to create one of the regions's most significant exhibits of the year. Many PSC members entered a work including First Prize winner Patrick Conners. Nearly 300 persons attended the opening reception on June 29 and fifteen of the thirty nine works were sold during the course of the exhibit. Plans for an exhibit in 2015 are now underway.

Entrants were required either to treat the Athenaeum building itself, including its richly embellished reading rooms, or choose from a great number of structures and places listed on the National Register of Historic Places for Philadelphia. This challenge produced several different interpretations of the historic fabric of Philadelphia where familiarity often renders the building nearly invisible to the city resident. Through the eyes of the artists, visitors looked again at the venerated structures, observing details that are missed in the everyday view.



The Athenaeum is open to the public and offers membership to all. It is an independent member-supported library and museum that engages members, scholars and the interested general public to join actively in the cultural and intellectual life of Philadelphia and participate in historical, literary and educational activities. It is housed in a National Historic Landmark building and has extensive collections of books, manuscripts, several hundred thousand architectural drawings, photographs, and historic objects. It is considered to hold one of the most important collections in the country. PSC members interested in membership in the Athenaeum should contact Ted or John.

2014 "Absolutely Abstract" Winners

- **First Place:** Aaron Kalinay, "Untitled", 30"x 40"
Acrylic on Canvas
- **Second Place:** Alfred Haywood, "Earth, Mother Earth", 28" x 22", Pastel on paper
- **Third Place:** Brandon Spector, "Cacophony", 31 ½" x 34 ½", Wood Window Frame & Lath

Honorable Mention:

- Jenny Singleton, "Rube Goldbird and His Fantastical Machine", 3'x3', acrylic on canvas
- Armor Keller, "A Distant Place", 16" x 20", acrylic and gold leaf
- Peter Mueller, "Smoke and Mirrors 2", 10"x10", Digital Photograph

PSC Flash Salon

The PSC Flash Salon is a solo or group exhibition of very short duration, anywhere from 5 days to 9 days, in our historic main gallery at 235 S. Camac St. in Philadelphia. It is a PSC juried show open to all, but specifically targeting post-education pre-career artists and curators in the Philly area. More information on the application, rules and layout of the exhibition space can be seen on the PSC website at <http://sketchclub.org/flash-salon/>

Available times for upcoming PSC Flash Salons are:

- Flash Salon 6 – Sept 15-19, 2014- 5 day session
- Flash Salon 7 – Oct 20-24, 2014- 5 day session
- Flash Salon 8 – Nov 19-28, 2014 – 9 day session
- Flash Salon 9 – Dec 17-26, 2014 – 9 day session

Open Workshop Schedule

All workshops are open to the public. There is no need to register before attending. You do NOT have to be a member of the Philadelphia Sketch Club to participate in the workshops. Our workshops are open to anyone who is interested in drawing, painting or printmaking. All skill levels are welcome.

Fees:

Model workshops: \$8/session members, \$9/session for non-PSC members

Printmaking workshop: \$10/session

All workshops \$6 for full-time students.

Life Model

Mondays – Extended pose (multi-session)

Monitors: Robert Bohne, Vince Docktor, Dan Kuetemeyer

Tuesdays – Extended pose*: 12:00 PM to 3:00 PM

Monitor: Jacqueline Barnett

Wednesdays – Extended pose: 6:30 to 9:30 PM

Monitor: Vince Docktor

Saturdays – Extended pose: 9:30 AM to 12:30 PM

Monitor: Vince Docktor

Costumed Model

Thursdays –

Extended pose*

12:00 PM to 3:00 PM

Monitor: Marilee Morris

Printmaking

Tuesdays

10:00 AM to 2:00 PM

Monitor:

Elizabeth H. MacDonald

* same pose for 2 consecutive weeks

Please note: Those who use oil paints should bring their own container to remove used turpentine. We ask that you use odorless thinner.

September 2014

Art Natters: Member News

Dot Bunn will have two of her oil paintings on exhibit at the Salmagundi Club in NYC this month.

"Reading in the Garden" was accepted into the Allied Artists 100th Anniversary Show, September 4 thru the 14. This show includes work by painters, sculptors and graphic artists from all over North America.



"Reading in the Garden", 30"x24", oil by Dot Bunn ►



"Ode to the Pre-Raphaelites" has been selected into the 82nd Juried Exhibition of the Hudson Valley Art Association, Sept 20 thru the 26. The aim of the show is to preserve and encourage the character, knowledge, craftsmanship and respect for natural form, color and design which distinguish fine painting and sculpture.

◄ *"Ode to the Pre-Raphaelites", 36"x24", oil by Dot Bunn*

Jeanne Chesterton will join 3 other artists in presenting "Points of View". The exhibit takes place at the Rolling Green Barn on Rt. 202 at Aquetong Road, New Hope, PA. Opening Reception is Friday, September 5, 5--9 pm. The show continues Saturday and Sunday, the 6th and 7th, from 10--5 each day. Two of her paintings have been accepted into the Friends of the Delaware Canal show, scheduled for the same venue the following week-end. Opening reception for the FODC show is Friday, September 12, 6--9 pm and continues Saturday and Sunday, the 13th and 14th, from 11--7 each day. Currently, Jeanne has a painting entitled "Standard" pictured below, in the "Trenton Then and Now" show at the Trenton City Museum at the Ellarslie mansion. That show continues through September 14th.



"Standard" by Jeanne Chesterton

September 2014

Art Natters: Member News (continued)



Jeff Gola was invited to participate in the annual "Landscape Exhibition" at William Baczek Fine Arts in Northampton, MA. The exhibit runs from Sept. 3 to October 4. Three of his pieces from this show are featured in the September edition of "American Art Collector" magazine. More information can be seen at www.wbfinearts.com.

◀ "Dr. Still's Office", egg tempera, 11" x 14" by Jeff Gola

Monique Lazard is having a solo show at the Church Street Gallery in West Chester, PA. The opening reception will be Friday September 5th, 5-9 pm. Church Street Gallery, 12 South Church Street, West Chester, PA, 215-989-1449. moniquelazard.com.

Pearl Mintzer will have a solo show at the Caffè Galleria in Lambertville, NJ from Sept. 2 to Oct. 28. For more information, see www.PearlMintzer.com.



Kimberlee Diana Nentwig's watercolor 'Orchid Trio' will be at the FODC (Friends of the Delaware Canal) Annual Juried Art Show, Sept 13 & 14, 11 am to 7 pm, at Rolling Green Barn, Rt. 202 and Aquatong Road in New Hope, PA. Her piece is on the show poster on the middle far right. You can view the show online at www.FODC.org.

September 2014

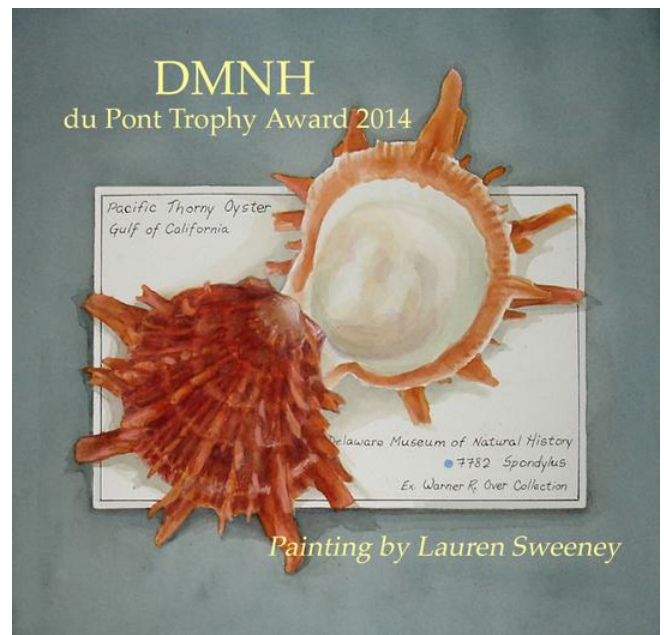
Art Natters: Member News (continued)

Deb K Simon was juried into the Tri State Artist Equity Fall Show at Wayne Art Center September 7-October 4, 2014 with her oil painting "Key Breezes". She is also co-chair with Nancy F. Tabas and exhibiting in the ARTsisters Group Show featuring their interpretation on the theme of Giraffes in memory of Lou, the late co-owner of Merion Art and Repro to benefit his charity, Phillies Charities. The show runs during the month of September with a reception on Friday, September 5, from 6-8 PM. See her website at www.debksimon.com.

Mina Smith-Segal's painting has been accepted in the abstract show at the Sketch Club. Her painting of the 9th Street market will be shown at the Plastic Club in September. Mina's photography is in the group show at Cafe Twelve.

This is the fourth year that new Sketch Club member **Lauren Sweeney** has been commissioned to create an original watercolor painting for the Delaware Museum of Natural History's annual du Pont Trophy award. This award is given to the outstanding exhibit submitted by amateur citizen collectors at shell shows around the country. The 2014 award will be given locally at the Philadelphia Shell Show at the Academy of Natural Sciences October 18 & 19.

Each award features a limited edition print of the commissioned painting. Each year the painting celebrates a different type of shell from the Delaware Museum's mollusk collection. Museum Curator of Malacology Liz Shea and the artist select shells that highlight key features of the museum's collection and are also of particular relevance to the shell-collecting community. In the 2014 painting shown here, the Pacific Thorny Oyster is featured (*Spondylus pictorum*). This marine bivalve is found off the western coast of the US, and was collected from the Gulf of California. In this composition, the shell is presented with its reference materials that document all shells in the collection.



These commissions are a natural extension of Lauren's evolution as a full-time artist, after a career spent in scientific observation in research, teaching, and as a scientific illustrator. Shells provide her with particular inspiration for their infinite variety of shape, color, pattern, and texture. Lauren has been particularly fortunate to have access to the extensive collection of the Delaware Museum of Natural History in Wilmington DE as source material for not only these commissions, but many other shell paintings that have been a mainstay of her artistic repertoire.

September 2014

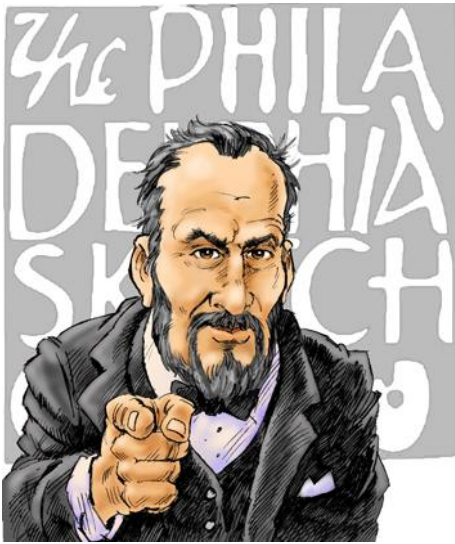


Illustration by Rich Harrington

Call for Volunteers

We still have important positions within the PSC that need volunteers to take over! Contact Faad Ghoraishi at fghoraishi@yahoo.com to help out your club with future events.

"The Portfolio": The newsletter of the Philadelphia Sketch Club is published monthly. Editor: Jeff Gola. **Send your member news, announcements and corrections to portfolio@sketchclub.org.** The due date for all materials is one week before the end of the month.

The Philadelphia Sketch Club

235 S Camac Street
Philadelphia, PA 19107

(215) 545-9298

<http://sketchclub.org/>

executivedirector@sketchclub.org

Officers:

President: Richard Harrington
Vice President: Kenneth Deprez
Secretary: Fran Carter
Treasurer: William Patterson

Board of Directors:

Alice Chung
Janet Cooke
Vincent Docktor
Faad Ghoraishi
Chuck Hilpl
Stephen Iwanchuk
Amanda Stevenson
Ken Weiner
Joe Winter