

Gallery hours: Wednesday, Friday, Saturday, Sunday: 1 PM to 5 PM

October 2015



## Inside "The Portfolio":

The Philadelphia Sketch Club's 155 <sup>th</sup> Anniversary Gala	2
Contribute to the Sketch Club	3
Dinner Meeting	4
Sketch Club Activities	4
Focus on: Sketch Club Social Media	5
2015 PSC Main Gallery Schedule	6
2015 Stewart Gallery Exhibition Schedule	6
Art Natters: Members News	7
Member Classifieds	13
Open Workshop Schedule	14
Call for Volunteers	15

Send your member news, announcements and corrections to [portfolio@sketchclub.org](mailto:portfolio@sketchclub.org). The deadline for ALL submissions is 1 week before the end of the month.

Reminder: It's never too late. You can always renew your membership

You may pay online at <http://sketchclub.org/annual-dues-payment/> or mail your check to:

The Philadelphia Sketch Club

235 S. Camac St.  
Philadelphia, PA 19107

For questions please contact the Gallery Manager at 215-545-9298 or email: [executivedirector@sketchclub.org](mailto:executivedirector@sketchclub.org)

Late Breaking News – See items that were submitted after the publication date. Go to:

<http://sketchclub.org/late-breaking-news/>

The PSC general email is: [info@sketchclub](mailto:info@sketchclub)

Gallery hours: Wednesday, Friday, Saturday, Sunday: 1 PM to 5 PM

October 2015

## The Philadelphia Sketch Club's 155<sup>th</sup> Anniversary Gala

**Please join us for our 155th Anniversary Gala on Saturday, October 17th.**

The Gala will be held at the Philadelphia Sketch Club, 235 S. Camac Street, Philadelphia, PA 19107, from 7 to 11 PM. You will have a fun time and get to mix with many prominent members of the artistic community.

We will honor three of America's top artists, Diane Burko, Vincent Desiderio and Garth Herrick,

with the presentation of the Philadelphia Sketch Club Medal. We will also present medals to Barbara and Richard Rosenfeld who ran the prominent Rosenfeld Gallery for nearly forty years. Many members of the Honorary Gala Committee will also be present. The Honorary Gala Committee includes: David R. & Holly Trostle Brigham (David is CEO of PAFA and Holly is an artist); Donald R. & Linda Aversa-Caldwell (Donald is Chair Emeritus of PAFA's Board of Trustees); Bill Scott, artist; William R. Valerio, Director & CEO, Woodmere Art Museum; Kathleen A. Foster, Senior Curator of American Art at PMA; David Weiss, Vice President at Freemans and a specialist on the *Antiques Roadshow*; Dr. Luther Brady, MD and art patron; Liz Price, artist and former Fleisher President; Dick Ranck, artist; Cindy and John Affleck, President of Woodmere's Board of Trustees; art patrons Joseph & Pamela Yohlin (Joe is on Woodmere's Board of Trustees); Frank Giordano, CEO of Philly Pops; and Dianne Semingson, art patron and Chair of the Avenue of the Arts, Inc; and Derek Gillman, former CEO of PAFA and the Barnes Foundation and currently Distinguished Visiting Professor of Visual Studies at Drexel University.

In addition to the medal presentations, highlights of the evening will include an unreserved [live auction](#) of artworks by the honored artists as well as some contemporary and historic works by Ranck, Bye, DiStefano, Lear and Ricciardi and Simon. The live auction will be led by David Weiss, Vice President at Freemans and a specialist on the *Antique Roadshow*. There will be an open bar, hors d'oeuvres and a buffet dinner. The Gala is on the same weekend as PAFA's Family & Alumni weekend. Given the strong connection between the Sketch Club and PAFA, and the number of PAFA individuals being honored at this year's event, PAFA has agreed to promote the Gala as part of the schedule of events so we may be honored by a good number of PAFA alumni.

You can order tickets at <http://sketchclub.org/the-sketch-clubs-155th-anniversary-gala/> or by calling 215-545-9298. Please order tickets promptly as we must provide a headcount to our caterer plus our capacity may be exceeded by the demand for tickets.





Gallery hours: Wednesday, Friday, Saturday, Sunday: 1 PM to 5 PM

October 2015

## Contribute to the Sketch Club

Please consider additional giving tax deductible financial support to the Sketch Club beyond your basic membership dues. Competition for funding for an arts organizations like the Sketch Club is increasingly competitive and total funding for the arts is shrinking. Your additional support will keep the PSC an active support for visual artists in the Metropolitan Philadelphia area.

The Philadelphia Sketch Club is an IRS designated 501(c) (3) non-profit organization which allows your donations to be tax deductible.

Funds from our current Annual Fund Drive will be used to correct the water leakage problem on the rear porch steps and to reframe the large North window.

You can mail your checks to the Sketch Club or visit the Contribute page of our Website to give online.

## Become a Member of the Philadelphia Sketch Club!

If you're reading this edition of the Portfolio and you're not a member of the PSC, you should consider joining the more than 200 other Philadelphia area artists who have. The PSC is one of the most active visual art venues serving center city Philadelphia. The PSC is a hands-on organization that offers its members the opportunity to participate in all aspects of creating and presenting work to the public. It presents over 20 scheduled group and solo exhibitions annually and offers a wide range of daily workshops. [Get info and an application here.](#)

If you are a member of the PSC, please feel free to share the Portfolio with your artist friends and encourage them to become members.

Gallery hours: Wednesday, Friday, Saturday, Sunday: 1 PM to 5 PM

October 2015

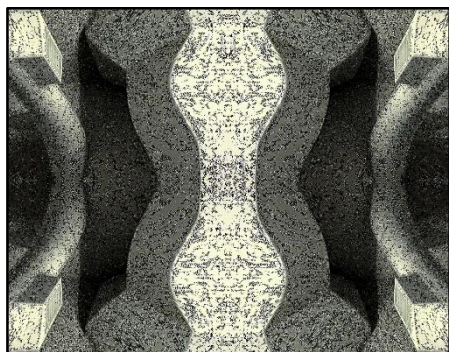
## Dinner Meeting

**Update: No Members' Dinner Meeting on October 9<sup>th</sup>. Be sure to attend the 155<sup>th</sup> Anniversary Gala on October 17<sup>th</sup>.**

## Sketch Club Activities

### Philadelphia Sketch Club Photographer's Circle

Meeting: October 22; 6:30 PM



#### Agenda:

- Part 2 of "Figure" presentation by Steve Kane and Steve Iwanczuk
- Selection of next speaker.

Contact Steve anytime at [sj22@drexel.edu](mailto:sj22@drexel.edu) or 215-300-9192 (cell)

**Steve Iwanczuk**

Photo Circle Monitor and Member of Philadelphia Sketch Club Board of Directors

### Critique Night: Every third Wednesday Night

Critique Night is held in the Library of the Sketch Club every third Wednesday beginning at 7 PM. Bring work you've finished, work in progress, or just sketches for work you're planning! Photos, digital work, drawings, all mediums are welcome; we can project digital images on a screen for review, so you have the option to show work that may be too big or too heavy to transport to the Club. There is no one individual directing the critique, just your fellow artists and peers



### Editor's Note: Portfolio Clarification



The medals appearing in the September Portfolio banner photo by Ken Weiner, showing the historic Sketch Club logo, were designed, developed, and manufactured by Pearl Mintzer. She requested that she be given credit for them.

Gallery hours: Wednesday, Friday, Saturday, Sunday: 1 PM to 5 PM

October 2015

## Focus on: Sketch Club Social Media

**You can help the Sketch Club get wider distribution of your message.**

**Use Social Media: Like, Link, Share: Twitter, Facebook and More...**

The Philadelphia Sketch Club has a strong presence on Facebook with over 1650 likes, up from 1500 in May. All traffic to our page is organic meaning that we don't pay for exposure to reach our audience. The PSC administrators share links relevant to the club membership such as calls for art, art event photos, publicity, public relations, schedules and meetings. For example, Ken Weiner, our web designer, creates an online web gallery on the Philadelphia Sketch Club web site, the link to the Absolutely Abstract 2015 gallery was shared on Facebook and that one link reached over 1000 people. A recent post shared by DoNArTNeWs written by PSC member Sylvia Castellanos exceeded 800 views in two days. Our Facebook page is linked directly to Twitter and each time a post is shared a simultaneous tweet is transmitted to our 300 followers. Through Social Media the Philadelphia Sketch Club reaches artists and art enthusiasts with targeted beneficial messages.



Don Brewer

How you can help by liking, linking and sharing:

- Like our Facebook page ([sketchclub.org](http://sketchclub.org)) The Philadelphia Sketch Club by clicking the 'Like' button at the top of the page. Once the button says 'Liked' hover your mouse over the button and a drop down menu will appear, click 'Get Notifications'. Now our posts will appear in your newsfeed.
- Join the conversation. Click the 'like' button and join the conversation. By clicking 'like' and commenting, posts shared on the page gain more traction by letting your friends know your interests. The comments section is a great place to share what's happening in your art life.
- Share our posts on your own Facebook business page, your timeline, and other related pages to effectively reach as wide an audience as possible. Invite your friends to 'Like' The Philadelphia Sketch Club Facebook page by clicking the Invite Friends button, a pop up box lets you select those friends most interested in the Sketch Club or invite them all.
- Follow [@PhilaSketch](https://twitter.com/PhilaSketch) Club on Twitter. Use hashtags #PSC #Philadelphia #SketchClub #art...Why? Because hashtags relate to topics and are used by Facebook and Twitter as search tools.
- Favorite and re-tweet our tweets on Twitter to broaden the reach of our message.

Editor's thanks to Don Brewer for putting this tutorial together.

Gallery hours: Wednesday, Friday, Saturday, Sunday: 1 PM to 5 PM

October 2015

## 2015 PSC Main Gallery Schedule

Reception: Sunday  
Oct. 11, 2015, 2 – 4  
PM

Gallery hours:  
Wednesday, Friday,  
Saturday, Sunday: 1  
PM to 5 PM



## 2015 Stewart Gallery Exhibition Schedule

**October 1<sup>st</sup> – 30<sup>th</sup>**

2015 Gala Show Auction

2015 Works Shop Show

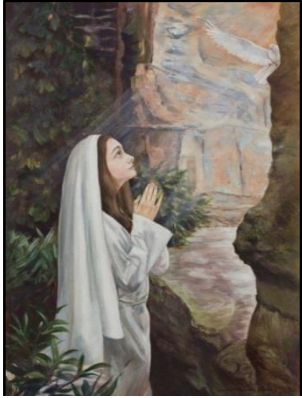
Reception

Sunday Oct. 4, 2015, 2 – 4 PM at PSC

Gallery hours: Wednesday, Friday, Saturday, Sunday: 1 PM to 5 PM

October 2015

## Art Natters: Members News



The Annunciation, oil on canvas,  
27 x 19"

**Annette Alessi** will be exhibiting her NEW oil called "The Annunciation" At Montgomery County Community College CCAA members show from September 23, 2015 to October 7th, 2015.

Opening Reception: Wednesday, September 23, 2015, from 5-7 pm

Gallery: Montgomery County Community College West Campus, North Hall, 16 High Street, Pottstown

Gallery Hours: Monday-Thursday, 8 am-9:30 pm; Friday, 8:30 am-4:30 pm

<http://www.mc3.edu/arts/fine-arts/art-wc>

**Pete Quarracino** will be having a solo exhibition at:

Church Street Gallery,

12 S Church St

West Chester, PA 19382.

215-989-1449

The reception will take place on October 16th from 6PM to 9PM. The exhibition continues until November 7<sup>th</sup>.

[www.quarracino.com](http://www.quarracino.com)



Morning Dew

## Industrial Philadelphia Past and Present Entry Deadline Approaching

**Sketch Club members Ted Lewis and John Schmiechen remind club members that Nov 1 is the deadline for submission. Please join us for this exciting event at the Athenaeum.**



*Industrial Philadelphia: Past & Present* is a celebration of the significant role the Philadelphia region has played, and continues to play, in our country's industrial life. All submitted works must depict some aspect of industry, past or present, in the six-county region (Philadelphia, Bucks, Montgomery, Chester, Delaware, and Camden).

**Registration open:** September 1 - Nov 1, 2015

[Click here to register](#)

**Exhibition Dates:** December 6, 2015-January 2, 2016

Please read the [prospectus](#) for more information on the competition. PSC members are given a entry discount and strongly encouraged to participate.

Gallery hours: Wednesday, Friday, Saturday, Sunday: 1 PM to 5 PM

October 2015

## Art Natters: Members News



Alice Chung

**Alice K. Chung** received Merit Award from Greater Norristown Art League (GNAL) Fall Juried Show on Sept 20, 2015. Also she is exhibiting Philadelphia Foundation until January 1, 2016 and The Plastic Club Exhibition.



**Karen Mark** will be a part of a group exhibition opening on October 4<sup>th</sup>.

# Alice and Us

## *A bunch of painters*

*Art Opening, Sunday, Oct 4th, 2 p.m. - 5 p.m.*

*Runs October 4 - 29, 2015*

The Plastic Club  
247 S. Camac St.  
Philadelphia, Pa 19107  
215.545.9324

- Alice Meyer-Wallace
- Debra Campbell Goodyear
- Michael Isakov
- Charles Lenzi
- Karen Mark
- Richard Conway Meyer
- Susan Ploeg
- Marie Olivier Russell
- Debora Weber
- Phyllis Dyer Weldon

Gallery hours: Wednesday, Friday, Saturday, Sunday: 1 PM to 5 PM

October 2015

## Art Natters: Members News

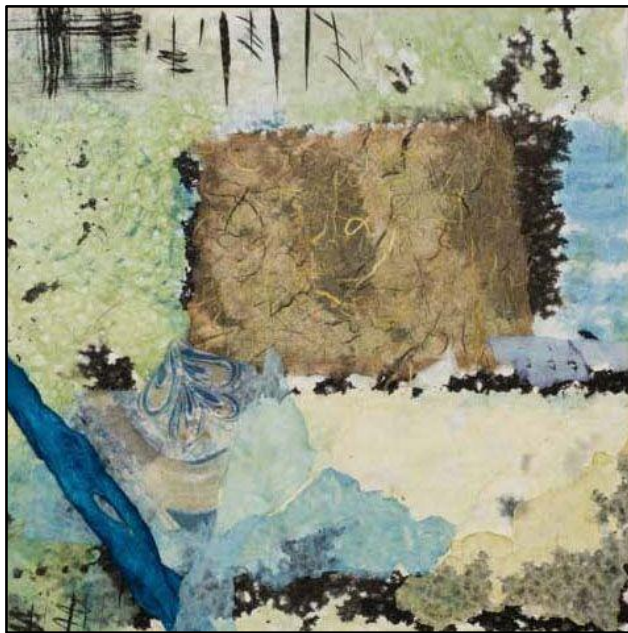
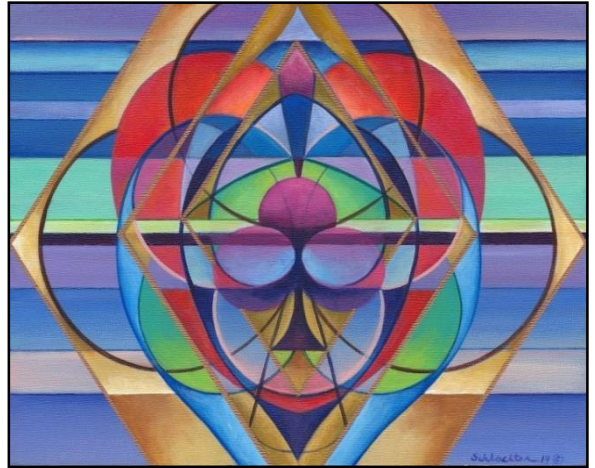
**Joellyn Ross** has joined the Church St Art & Craft Gallery, an artists' collective, in the historical Mill Race Village in Mt. Holly, N.J. Several of her abstract paintings are now on display there.

**Lois Schlachter** will be having an exhibition title "Fun, Fun, Fun". Visit Lois' website at [www.fineartbylois.com](http://www.fineartbylois.com)

Bethlehem City Hall  
Rotunda Gallery  
10 East Church Street  
Bethlehem, PA 18013

Date: October 1<sup>st</sup>-October 27<sup>th</sup>

Reception: October 4<sup>th</sup>, 2pm-4pm



**Memories**

**Pamela Tudor's** piece, "Memories" was exhibited in the Absolutely Abstract juried show at the PSC.

Gallery hours: Wednesday, Friday, Saturday, Sunday: 1 PM to 5 PM

October 2015

## Art Natters: Members News

**DoN Brewer** is included in the 2015 Autumn Invitational (New Work from Top Selling / Award Winning Artists) at Off the Wall Gallery at Dirty Franks, 13th & Pine Streets, Philly. September 19th through November 13th. Opening reception Thursday, October 1st, 7:00 - 10pm

I am showing seven paintings and a group of folded paper fortune tellers. The other artists in the show are Cynthia Harvey, Rob Lybeck, Annette Newman, Mina Smith-Segal and Ed Snyder.

Bryn Mawr Rehab's 25th Annual Artist Ability Art Exhibition has juried in three of my artworks, two landscape oil paintings and a digital collage titled Venus. Venus was included in the 2015 Art of the Flower show at The Philadelphia Sketch Club. Camp Oneida, oil on canvas, 12" square has been shown at Off the Wall Gallery, The Plastic Club and The Philadelphia Sketch Club 152nd Annual Small Oils Exhibition. View from Bartram's Garden, oil on canvas, 20" x 16", 2014 has been on display at PNC Bank.

To be included in the Art Ability show is a big honor, the Patron Preview party is November 7th. Ironically I didn't get in the show last time with a single photo submission. That photo went on to win the Mary Rowe Memorial Award that led to the Off the Wall Gallery group show opportunity. And was included in the Open Lens juried photo show at Da Vinci Art Alliance. Last year Toga Travalia asked me to consider being a guest artist for the Autumn Invitational. I knew I wasn't ready with any new work. Over the past year with the help of drawing workshops, and plein air painting field trips I have returned to painting after almost eight years.

That's because my blog DoNArTNeWs Philadelphia Art News Blog has been so successful reaching over 800,000 unique visitors year to date. As the Social Media Chair of the Philadelphia Sketch Club I encourage you to like, click and share to promote our art news. I'm really proud to have my work recognized by the art community.

**DoN's Art Blog:** <http://www.donartnews.com/>

Gallery hours: Wednesday, Friday, Saturday, Sunday: 1 PM to 5 PM

October 2015

## Art Natters: Members News

**Su Knoll Horty** will be participating in the Philadelphia Open Studio Tours on Saturday, Oct. 3<sup>rd</sup> and Sunday, Oct. 4<sup>th</sup> from 12 noon to 6 pm at 1241 Carpenter St. in the Ground Floor Gallery. Su will be giving an artist talk on Sunday between 1:30 and 2 pm. Su's latest paintings will be on display.

<http://philaopenstudios.org/artist-profile/su-knoll-horty>.

**Robert Bohne** who monitors the Thursday afternoon costume workshop will have a solo show of paintings and drawings at the Church Street Gallery in West Chester Pa. in November. The show opens on Friday, Nov. 13th and will be on display for a month.

The gallery is located at  
12 S. Church St.  
West Chester Pa.

Gallery hours: Wednesday, Friday, Saturday, Sunday: 1 PM to 5 PM

October 2015

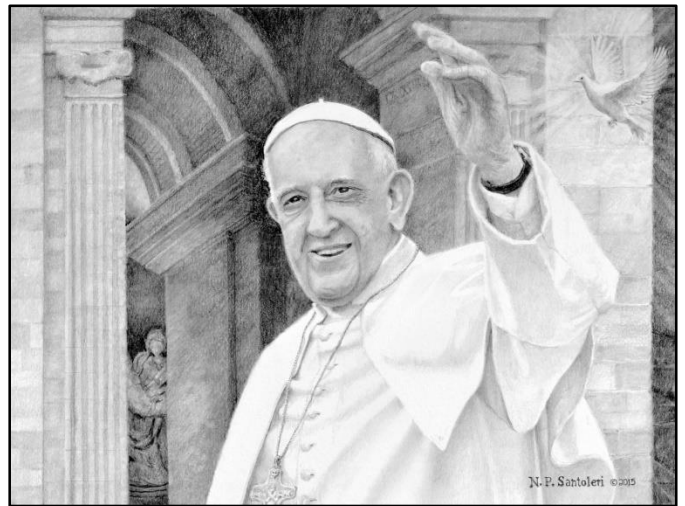
## Art Natters: Members News

### Chester County artist Nicholas P. Santoleri releases "Pope Francis" pencil drawing

September 8, 2015-Santoleri Studio would like to announce the release of **Nicholas P. Santoleri's** original Pencil Drawing, "**Pope Francis**". The drawing is based on photographs taken by Nick on a recent trip to Rome. The Pencil Drawing, image size 11 x 14 inches, and framed and matted 21 x 25 inches, is for sale for \$4,250.

<https://www.PopeFrancisDrawing.com>

Nick explains the origins of the piece: "I spent a wonderful 2 weeks in Italy in late July, hoping for a relaxing holiday, but also expecting some artistic inspiration from the fabulous museums and public artwork I would find there. However, it was towards the end of my trip that my next project was unexpectedly decided. I was privileged to attend a mass in St. Peter's Square celebrated by Pope Francis. I have developed a great admiration for this holy man based on his writings, speeches, and his genuine affinity for all people. With my camera at the ready, I was able to take hundreds of pictures of the pope during his arrival and departure from St. Peter's. When I returned home, I created the composition for an original pencil drawing from the many photographs I had taken." With the pencil drawing complete, Santoleri is now working on an oil painting of Pope Francis which he hopes to complete by mid-October. If you are interested in this painting, please contact the studio for an appointment to view it in progress.



An open edition print, "**Pope Francis**" is also available. The print has an image size of 9.75 x 13 inches, is hand signed by the artist, and retails for \$35.

As most of you on the east coast know, the Pope will be visiting New York City, Washington, DC, and Philadelphia in late September. This original drawing, or a pencil print, would create a lasting remembrance in your home of this historic visit.

Nick's website, [www.Artist1.com](http://www.Artist1.com), is the best place to see his complete catalog of original artwork, as well as limited edition and open edition prints. For more information, you can contact the Santoleri Studio at [610-995-2047](tel:610-995-2047).

Gallery hours: Wednesday, Friday, Saturday, Sunday: 1 PM to 5 PM

October 2015

## Member Classifieds

**New this month!** Do you have skills that you would like to share with the PSC community? Or can you provide beneficial services? What about those unused art materials or tools that you no longer use or need? You can advertise them here in the Member Classifieds Page. Submit items via [portfolio@sketchclub.org](mailto:portfolio@sketchclub.org)

### Buying or Selling Real Estate

As a lifelong Philadelphian, PSC member **Joanne Hirsh** knows the neighborhoods you're looking for. She is delighted to work with individuals to find their "dream home" or sell your present home. Having a wide knowledge of the real estate market, Joanne has a full understanding of the buyer-seller relationship and offers personalized attention to her clients at all times.

You can reach Joanne at: [joanne.hirsh@foxroach.com](mailto:joanne.hirsh@foxroach.com) or

Mobile: 610-310-7062. References Available.

### Photography Services for Artists

Do you need high-quality digital images of your work? Is glare a problem? Color balance not quite right? I can help you get great images of your 2-D or 3-D work suitable for digital file output or output for presentation and hard-copy presentation. I offer flexible availability, willingness to travel, special pricing for Sketch Club members. Contact: **Ken Weiner**

[note2kenweiner@verizon.net](mailto:note2kenweiner@verizon.net);  
215-280-6325.

Gallery hours: Wednesday, Friday, Saturday, Sunday: 1 PM to 5 PM

October 2015

## Open Workshop Schedule

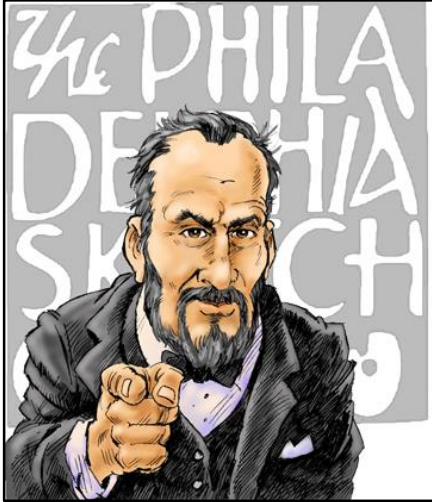
**All workshops are open to the public. There is no need to register before attending.** You do NOT have to be a member of the Philadelphia Sketch Club to participate in the workshops. Our workshops are open to anyone who is interested in drawing, painting or printmaking. All skill levels are welcome. **Fees:** Model workshops: \$8/session members, \$9/session for non-PSC members; Printmaking workshop: \$10/session; All workshops \$6 for full-time students.

Life Model	Costumed Model	Printmaking
<p><b>Mondays</b> – Extended pose (multi-session): 6:30 PM-9:30PM</p> <p>Monitors: Robert Bohne, Vince Docktor, Dan Kuetemeyer</p> <p><b>Tuesdays</b> – Extended pose: 12:00 PM to 3:00 PM Monitor: Jacqueline Barnett</p> <p><b>Wednesdays</b> – Extended pose: 6:30 to 9:30 PM Monitor: Vince Docktor</p> <p><b>Saturdays</b> – Extended pose: 9:30 AM to 12:30 PM Monitor: Vince Docktor</p>	<p><b>Thursdays</b></p> <p>Extended pose</p> <p>12:00 PM to 3:00 PM Monitor: Bob Bohne.</p>	<p><b>Tuesdays</b></p> <p>10:00 AM to 2:00 PM Monitor:</p> <p>Elizabeth H. MacDonald</p>
<p><b>Please Note:</b> Those who use oil paints should bring their own container(s) to remove used solvents. Odorless solvents only.</p>		

Gallery hours: Wednesday, Friday, Saturday, Sunday: 1 PM to 5 PM

October 2015

## Call for Volunteers



We have important positions within the PSC that need volunteers to take over! Contact Faad Ghoraishi at [faad@sketchclub.org](mailto:faad@sketchclub.org) to help out your club with future events.

**Still Wanted:** Detail oriented members interested in helping us maintain and update our membership database. Our membership database is an important tool that helps us communicate with our members and friends more effectively.

If you have a modicum of computer graphics skills or if you want to learn them, get involved!

Contact us today if you want to help! Ask for Ken Weiner

**The Portfolio:** The newsletter of the Philadelphia Sketch Club is published monthly. **Editors:** Cathy Yang and Elise Anzini. Technical support and Web Master: Ken Weiner

Send your member news, announcements and corrections to [portfolio@sketchclub.org](mailto:portfolio@sketchclub.org). The due date for all materials is one week before the end of the month.

### The Philadelphia Sketch Club

235 S Camac Street  
Philadelphia, PA 19107  
(215) 545-9298  
<http://sketchclub.org/>  
[executivedirector@sketchclub.org](mailto:executivedirector@sketchclub.org)

Gallery Manager: Marilyn  
Foehrenbach

#### Officers:

- President: Richard Harrington
- Vice President: Kenneth Deprez
- Secretary: Fran Carter
- Treasurer: William Patterson

#### Board of Directors:

- Alice Chung
- Vincent Docktor
- Stephen Iwanczuk
- Kevin Meyers
- Nancy H. Mills
- Brian Siegel
- Amanda Setverson
- Kenneth Weiner
- Joe Winter