

Gallery hours: Wednesday, Friday, Saturday, Sunday: 1 PM to 5 PM

November 2015



Inside "The Portfolio":

The Philadelphia Sketch Club's 155 th Anniversary Gala	2
Contribute to the Sketch Club	2
Membership	3
Dinner Meeting	4
Sketch Club Activities	5
2015 PSC Main Gallery Schedule	6
2015 Stewart Gallery Exhibition Schedule	6
Art Natters: Members News	7
Member Classifieds	16
Open Workshop Schedule	17
Call for Volunteers	18

Send your member news, announcements and corrections to portfolio@sketchclub.org. The deadline for ALL submissions is 1 week before the end of the month.

Reminder: It's never too late. You can always renew your membership

You may pay online at <http://sketchclub.org/annual-dues-payment/>
or mail your check to:

The Philadelphia Sketch Club

235 S. Camac St.
Philadelphia, PA 19107

For questions please contact the Gallery Manager at 215-545-9298 or email: executivedirector@sketchclub.org

Late Breaking News – See items that were submitted after the publication date. Go to:

<http://sketchclub.org/late-breaking-news/>

The PSC general email is: info@sketchclub

Gallery hours: Wednesday, Friday, Saturday, Sunday: 1 PM to 5 PM

November 2015

The Philadelphia Sketch Club's 155th Anniversary Gala

Successful 155th Anniversary Gala Draws Art Notables to Sketch Club

By all accounts the Philadelphia Sketch Club's 155th Anniversary Gala was a success and provided a joyful time for all attendees. The highlight of the Gala was the presentation of Sketch Club Medals to three prominent artists (Diane Burko, Vincent Desiderio and Garth Herrick) and to Barbara and Richard Rosenfeld who ran the Rosenfeld Gallery in Philadelphia for nearly forty years. In addition to the honorees, other notables from the art scene at the event included David R. Brigham, CEO of PAFA; Donald R. & Linda Aversa-Caldwell (Donald is Chair Emeritus of PAFA's Board of Trustees); William R. Valerio, Director & CEO, Woodmere Art Museum; Kathleen A. Foster, Senior Curator of American Art at PMA; David Weiss, Vice President at Freemans and a specialist on the *Antiques Roadshow*; Dianne Semingson, Chair of the Avenue of the Arts, Inc; Derek Gillman, former CEO of both PAFA and the Barnes Foundation and currently Distinguished Visiting Professor of Visual Studies at Drexel University; and a number of eminent artists to include Jan Baltzell, Bill Scott, Dick Ranck, Liz Osborne, James Toogood, John Thornton, Michael Gallagher, Alexandra Tyng, Elaine Lisle, Joe Winter, Amanda Stevenson Lupke, Ed Bronstein, and many more. The evening began with hors d'oeuvres and drinks starting at 7 pm. The medal presentations were made an hour later. Then David Weiss from Freemans led the live auction of nine donated paintings including works from the honorees. During this time, a silent auction of various items was held on the first floor. After the auction a buffet dinner was served in both the gallery and the Rathskeller. A party favor was presented to all attendees which was a wine glass with both the Sketch Club logo and corporate seal. John Thornton, a PAFA trained fine artist, recorded many of the evenings activities on a video which he artfully crafted into a masterpiece. You can view the Gala video by clicking on the below link or pasting it into your browser address line. <https://youtu.be/BNBmcfvMH4>

Contribute to the Sketch Club

Please consider additional giving tax deductible financial support to the Sketch Club beyond your basic membership dues. Competition for funding for an arts organizations like the Sketch Club is increasingly competitive and total funding for the arts is shrinking. Your additional support will keep the PSC an active support for visual artists in the Metropolitan Philadelphia area.

The Philadelphia Sketch Club is an IRS designated 501(c) (3) non-profit organization which allows your donations to be tax deductible.

Funds from our current Annual Fund Drive will be used to correct the water leakage problem on the rear porch steps and to reframe the large North window.

You can mail your checks to the Sketch Club or visit the Contribute page of our Website to give online.

Gallery hours: Wednesday, Friday, Saturday, Sunday: 1 PM to 5 PM

November 2015

Membership

Become a Member of the Philadelphia Sketch Club!

If you're reading this edition of the Portfolio and you're not a member of the PSC, you should consider joining the more than 200 other Philadelphia area artists who have. The PSC is one of the most active visual art venues serving center city Philadelphia. The PSC is a hands-on organization that offers its members the opportunity to participate in all aspects of creating and presenting work to the public. It presents over 20 scheduled group and solo exhibitions annually and offers a wide range of daily workshops. [Get info and an application here.](#)

If you are a member of the PSC, please feel free to share the Portfolio with your artist friends and encourage them to become members.

New Members this Month

The Sketch Club welcomes new members recently approved by the Board of Directors.

- **Steven Kilpatrick**
- **Natsuo Iwata**

Deceased

Donald H. Fey - We are sorry to report the death of Don Fey on October 18th. Don was a watercolor painter and was active at the Sketch Club from 1967 to the mid-1990s. Don was also a professional writer for more than thirty years, primarily in fundraising and development for schools, hospitals and public service agencies. As a volunteer he helped launch the Sketch Club's grant writing efforts which led to significant building improvements in the 1990s. Don was also the father of the noted actress, writer and producer Tina Fey.

A memorial salute to Don will appear in the next issue of the Portfolio.

New Gallery Director: Michelle Lockamy

We would like to Welcome **Michelle Lockamy** as the new Gallery Director at the Philadelphia Sketch Club. Michelle joins us after graduating in 2015 with a BFA in Illustration from Moore College. While at Moore Michelle was a summer intern for the PSC. She also won several awards for her student work, including receiving national recognition. Michelle is succeeding Marilyn Fohrenbach, who has taken on a new position with Mural Arts. We wish Marilyn well on her new endeavor, and welcome Michelle to the PSC. -Rich Harrington, PSC President

Gallery hours: Wednesday, Friday, Saturday, Sunday: 1 PM to 5 PM

November 2015

Dinner Meeting

Members' Dinner Meeting Presentation Open to the Public

Friday November 13, 2015

AGENDA

- 5:30- Social Period Begins
- 6:15- Speaker: Armor Keller
- 7:15- Dinner

DINNER

- Members - \$16
- Guests - \$18

MENU

- *Tossed Salad*
- *Rolls & Butter*
- *Veal Scallopini*
- *Spiral Pasta in Vodka Sauce*
- *Broccoli Au Gratin*

About Armor Keller

ArmorKeller@msn.com;

See Armor's Web site: <http://armorkeller.com/>

Award winning artist, **Armor Keller**, was born in Montgomery, Alabama. After having lived in different parts of the United States and overseas, her home is now Doylestown, Pennsylvania.

Her artwork has been presented in many solo exhibitions, including; Huntsville Museum of Art, Kentucky Museum, Wiregrass Museum, Mercedes-Benz Museum, all in Alabama. She has also had solo exhibitions at the following: Meridian Museum of Art, Mississippi, Monroe Museum of Art, Louisiana. Armor's work has also been included in many group exhibitions. She has had several commissions including designing and gold leafing six wooden doors for Temple Beth El of Birmingham, AL, and 33 paintings for Broadway Crowne Plaza Hotel of New York.

One of Armor's more ambitious projects has been the *Magic City Golden Transit*, a car that she gold leafed and jeweled inside and out. It has been featured in a film, books, a calendar, several magazines including *Smithsonian Magazine*, *Car and Driver*, *Spiegel* of Germany, the *Japan Esquire* and newspapers, including the *New York Times*. Her art car is now permanently located at The Art Car World Museum, in Arizona.

In 1993, Armor began making one of a kind artist's books. Her books have been exhibited, not only in the USA, but Canada, Mexico, and Germany. [See complete bio](#)

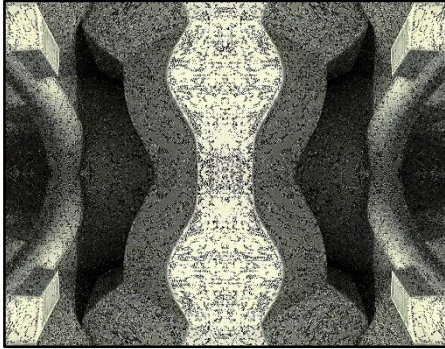
Gallery hours: Wednesday, Friday, Saturday, Sunday: 1 PM to 5 PM

November 2015

Sketch Club Activities

Philadelphia Sketch Club Photographer's Circle

Meeting: November 12, 2015 from 6:30 to 8:30 pm.



The next Photographer's Circle Meeting at the Philadelphia Sketch Club will be on Thursday, November 12, 2015 from 6:30 to 8:30 pm. We will select the presentee for the December Meeting and discuss any photo's that attendees will bring . . . so bring an image for discussion.

Contact Steve anytime at si22@drexel.edu or 215-300-9192 (cell)
Steve Iwanczuk

Photo Circle Monitor and Member of Philadelphia Sketch Club Board of Directors

Critique Night: Every third Wednesday Night

This month: November 18th at 7:00 PM

Critique Night is held in the Library of the Sketch Club every third Wednesday beginning at 7 PM. Bring work you've finished, work in progress, or just sketches for work you're planning! Photos, digital work, drawings, all mediums are welcome; we can project digital images on a screen for review, so you have the option to show work that may be too big or too heavy to transport to the Club. There is no one individual directing the critique, just your fellow artists and peers



Gallery hours: Wednesday, Friday, Saturday, Sunday: 1 PM to 5 PM

November 2015

2015 PSC Main Gallery Schedule

7th Annual PSC Philustration Exhibition

Nov 2-27, 2015

- Chair: Rich Harrington

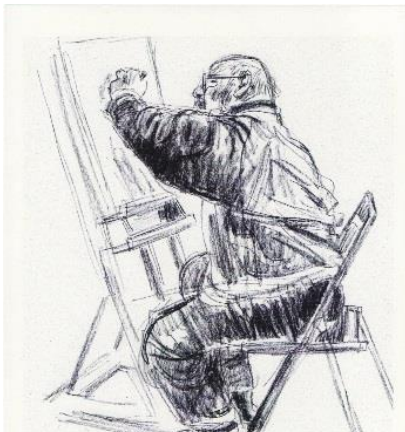
Reception

- Sunday Nov 8, 2015, 2 – 4 PM at PSC

This show features a wide range of styles and works in different mediums. Works on display include fantasy illustrations executed in oil and digital media, original artwork from The New Yorker, and children's book illustrations created with watercolor and pen and ink. Many of the illustrators juried in the show are expected to attend the Opening reception, so come out and meet them that afternoon if you can.



2015 Stewart Gallery Exhibition Schedule



Drawing by Art Spikol, 2012

JOE MESAROS: A LIFE ILLUSTRATED

The Philadelphia Sketch Club Celebrates Joe's 50 Years of Membership and Creativity

NOVEMBER 4-29, 2015 in the Stewart Room

Exhibit of Drawings & Paintings

RECEPTION: Sunday, November 8, 2015 from 1-4pm at the Club with "Welcome" and remarks at 1:15pm

Gallery hours: Wednesday, Friday, Saturday, Sunday: 1 PM to 5 PM

November 2015

Art Natters: Members News



Lost in Thought

Susan Barnes had three paintings juried into the Annual Juried show at Center for the Arts of Southern NJ. "Lost in Thought" received Judges Choice award. She also received Honorable Mention for her still life, "Seckels", in the Annual Juried Show at the Medford Art Center which runs until November 22.

Two of her paintings were juried into the Willingboro Art Alliance 20th Annual Open Juried Exhibition. She also has three paintings in "Art at the Arboretum" juried show at Medford Leas Gallery.

In addition U.S. Congressman Tom MacArthur, 3rd District NJ, recently purchased eleven of Susan's paintings.

Bill Kosman is joining three other artists and historian Lynn Miller in a celebration of French Nation Day presented by Global Philadelphia on Tuesday (Oct. 27th) at the Sofitel Hotel (120 South 17th St., Philadelphia 19103). The event lasts from 2 pm to 7 pm.

I'd be honored if you could come and view the works by the four of us and hear what we have to say. In a short presentation, I'll be talking about my landscapes in Normandy and the welcome I've enjoyed from the people in my little corner of Normandy.

If you can attend, you can get more information on Global Philadelphia's website; a link is below. Also, if you do attend, please say hello to me; I'd love to talk with you. [http://www.globalphiladelphia.org/postcard for the event](http://www.globalphiladelphia.org/postcard_for_the_event). Also, as incentive, above is one of the paintings I'll discuss.

Thanks for your time, and – if possible – I'd love to see you.



Beach at Saint Aubin

Gallery hours: Wednesday, Friday, Saturday, Sunday: 1 PM to 5 PM

November 2015

Art Natters: Members News



Blue Skies Smiling at Me

Brenda L Bechtel's Oil on Linen, "Tea with H. F. at Three ~ Winterthur" received the Ed Schein Award during the 2015 Cambridge Art Association Fall Salon at University Place Gallery, Harvard Square. Brenda is inspired to be the first, second-time recipient of this award.

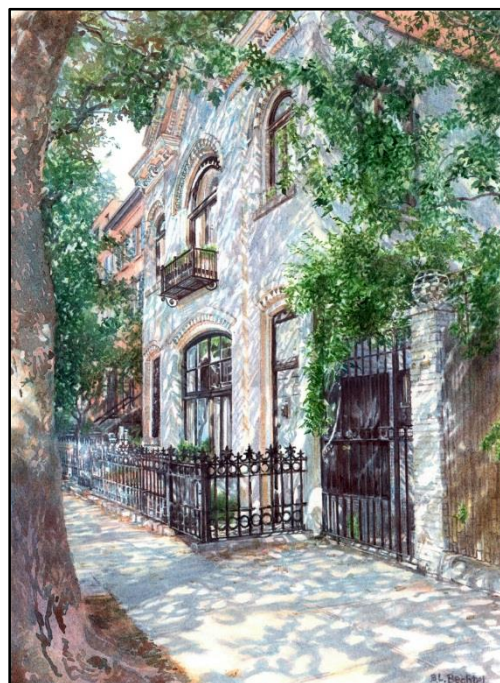
The Guild of Boston Artists on Newbury Street hosts an impressive compilation of accomplished, International Artists whose Art best represents the genre of the Boston School of Painters. Once each year (heads up PSC peeps, good one to enter www.guildofbostonartists.org), a competitive open call invites artists to enter a Juried Exhibition, where included representational paintings are installed in the prestigious President's Gallery. "Blue Skies Smiling at Me" Oil on Linen is one

of the 45 included, on view through October 31.

In Harvard Square, Cambridge Art Association is hosting "Blue, more than a Color" National Biennial Exhibition, November 17 through January 13, 2016. "Blue Skies Smiling at Me" included (more info will follow).

The Salmagundi Club is hosting American Artists Professional League 87th Grand National and includes "Lacework on Montague" Transparent Watercolour, November 8 - 20th. John Traynor will present a demonstration of his Talent during the Awards Reception on the 15th-not to be missed! At the National Arts Club, the 119th Catharine Lorillard Wolfe Art Club National Exhibition includes "Fog Descends in an Amber Fugue" December 1 - 18, Benefit Reception for the Metropolitan Museum 11th 5:30-8, Awards Dinner 18th 6-9. The same painting is currently included in the National All New England Exhibition in Massachusetts at the Cape Cod Art Association through November 16. Pennsylvania Watercolor Society 36th International Exhibition at Carlisle Arts Learning Center continues through November 13 where Brenda's Transparent Watercolour, "Memories of Infinitude" is on view. In Rhode Island, Warwick Art Museum includes Brenda's Oil on Linen, "Ladybug Picnic" in the 29th Open Regional Juried Exhibition, extended through November 6, 2015.

Brenda's website <http://www.angelfire.com/art2/brookside>



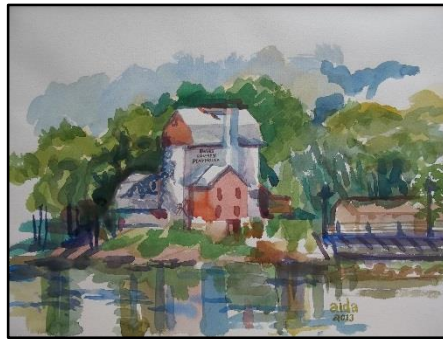
Lacework on Montague

Gallery hours: Wednesday, Friday, Saturday, Sunday: 1 PM to 5 PM

November 2015

Art Natters: Members News

Aida Birritteri's watercolor of the Bucks County Playhouse SOLD and received a 3rd Place Award in the Watercolor Category at the Tinicum Arts Festival in Erwinna, Pa., July 2015. Also, received an honorable mention and SOLD at the plein air event in the town where I live in, High Bridge, NJ



Bucks County Playhouse

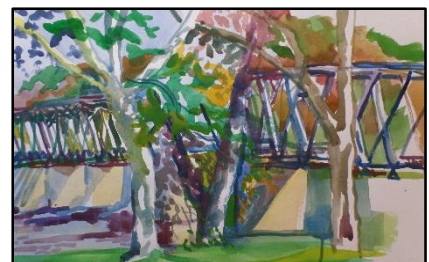
The following are 3 new works created in Autumn 2015.



Cooper Grist Mill



Autumn BY the Canal 02



By the Light of the Bridge

Robert Bohne, monitor for the Thursday costumed workshop, will be exhibiting his work at the Church St. Gallery in West Chester Pa. There will be a reception for the Artist on Friday, Nov. 13th 6pm to 9pm at 12 South Church St. West Chester Pas.

Gallery hours: Wednesday, Friday, Saturday, Sunday: 1 PM to 5 PM

November 2015

Art Natters: Members News

The American Artists Professional League (AAPL) has juried **Christiane Casella's** bronze, "Unconditional" into its 87th Grand National Exhibition at the Salmagundi Club.

The show runs Sunday, November 8th through Friday, November 20, 2015. Awards Reception Sunday, November 15, 2015.

Address: Salmagundi Club 47 Fifth Avenue, New York, NY 10003



Unconditional

Gallery hours: Wednesday, Friday, Saturday, Sunday: 1 PM to 5 PM

November 2015

Art Natters: Members News

Artist **Susan A. Esbensen** had two oil paintings selected by the Arts & Cultural Council of Bucks County for their upcoming first members' juried art show. "Winter Wonderland," this year's themed juried exhibition, chose Susan A. Esbensen's "Buck's County Winter" and "Returning Home."

In addition, the judges have awarded "Buck's County Winter" a 'Best of Show'.



Returning Home



Buck's County Winter

The exhibit "Winter Wonderland" runs from November 8, 2015 - January 9, 2016 at the Bucks County Visitor Center in Bensalem, PA. Closing Reception on January 9, 2016 from 1-3 pm.

Visitor Center is located at 3207 Street Road in Bensalem, PA 19020. Their phone number is (215)-639-0300.

For more information: ACCBC website: <http://www.bucksarts.org/>

Gallery hours: Wednesday, Friday, Saturday, Sunday: 1 PM to 5 PM

November 2015

Art Natters: Members News

Alan Fetterman appears in Surban Life Magazine: [Read the entire article](#)



Gallery hours: Wednesday, Friday, Saturday, Sunday: 1 PM to 5 PM

November 2015

Art Natters: Members News

Steve Flom is showing his work at Camden County College's Marlin Gallery. "Wood & Stone - by Joe Brenman and Steve Flom" through November 13th.



The Marlin Gallery

of Camden County College Presents:

Wood & Stone

by JOE BRENMAN and STEVE FLOM

Artists' Reception: Wed., October 14, 5-7 p.m.

Show Dates: October 14 to November 13, 2015

Gallery Hours: Monday-Thursday, 1-3 p.m. *Additional hours upon request.*

The Marlin Gallery

detail: Stella by Starlight, Chestnut Wood, 57"x 16"x 15" 2015 Daybreak, Limestone, 30"x9"x9" Photo credits: John Carlano

200 College Drive Blackwood, NJ 08012

Gallery hours: Wednesday, Friday, Saturday, Sunday: 1 PM to 5 PM

November 2015

Art Natters: Members News

Doris Peltzman has 2 paintings in the Willingboro Art Alliance 20th Annual Open Juried Exhibition at the Dr. David Flinker Gallery, Virtua Hospital in Mt. Holly, N.J.



Rhapsody in Blue

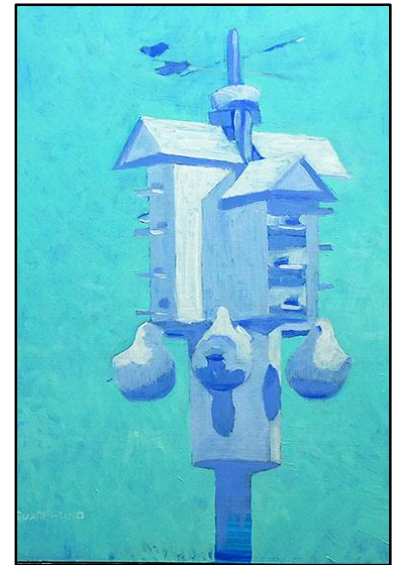
Her art has also been on exhibit at the Centennial Exhibition at Harcum College.

In December she will be part of the Main Line Art Center's 2015 Annual Members Exhibition.

Doris is presently exhibiting at 28 East Gallery in Burlington, N.J.

Pete Quarracino will be exhibiting at the Sunset Hill Miniature Show. The small painting show opening is Nov. 6, 2015 from 5 to 8PM. Show will continue till Dec. 24th. Sunset Hill Fine Arts Gallery 23 N. High St.

West Chester Pa 610-692-0374



Midcentury Modern

Gallery hours: Wednesday, Friday, Saturday, Sunday: 1 PM to 5 PM

November 2015

Art Natters: Members News



THE MORE THE MERRIER

Bill Scott, Guest Curator

Lennart Anderson · Brian Boutwell · Quita Brodhead · Michael Ciervo
Patrick Connors · Jacqueline Cotter · Danielle Dimston · Cindi Ettinger
Iona Fromboluti · Evan Fugazzi · Moy Glidden · Eileen Goodman
Sidney Goodman · Barbara Goodstein · Mark Green · Barbara Grossman
Hugh Hamrick · Carol Heft · Sean Hildreth · Clint Jukkala · Alex Kanevsky
Michael Kowbuz · Keith Leitner · Frances M. Maguire · Ruth Miller · Edith Neff
Mary Nomecos · Janice Nowinski · Benjamin Passione · Jane Piper
Bruce Pollock · Glen Sacks · Karen Segal · Sterling Shaw · Doris Staffel
Kyle Staver · Allison Syvertsen · Ivanco Talevski · Tom Walton
Justin Webb · John Williams · Douglas Wirls

November 27 - December 20, 2015

OPENING RECEPTION: Friday, November 27, 2015 5 - 8 pm

HOLIDAY PARTY: Saturday, December 5, 2015 2 - 6 pm

GALLERY TALK: Sunday, December 13, 2015 2 pm



Cerulean Arts

GALLERY · STUDIO

1355 Ridge Avenue
Philadelphia, PA 19123
267-514-8947
www.ceruleanarts.com



Cerulean Arts

Cultivating an appreciation for art
by presenting exhibitions, offering
unique decorative and fine art for
sale and providing art instruction
for personal fulfillment.

Gallery Hours:

Wednesday: 2 pm - 6 pm

Thursday & Friday: 10 am - 6 pm

Saturday & Sunday: 12 pm - 6 pm

James Toogood's exhibition, James Toogood: Watercolors continues at the Pennsylvania Academy of the Fine Arts, PAFA through November 29

Gallery hours: Wednesday, Friday, Saturday, Sunday: 1 PM to 5 PM

November 2015

Member Classifieds

Studio Space for Rent

We want Artists At the Gristmill grounds on Beulah road,
just off of rt 202 and 5 minutes to Doylestown. 1,600 square feet, 12' high ceilings,
garage doors, office with powder room. Quiet area in woods near stream.
\$1,500 mo. water/sewer & trash included call 215-285-6569

Photography Services for Artists

Do you need high-quality digital images of your work? Is glare a problem? Color balance not quite right? I can help you get great images of your 2-D or 3-D work suitable for digital file output or output for presentation and hard-copy presentation. I offer flexible availability, willingness to travel, special pricing for Sketch Club members. Contact: **Ken Weiner**

note2kenweiner@verizon.net;

215-280-6325.

Gallery hours: Wednesday, Friday, Saturday, Sunday: 1 PM to 5 PM

November 2015

Open Workshop Schedule

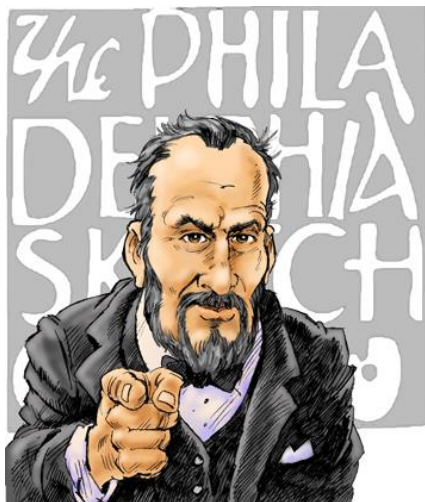
All workshops are open to the public. There is no need to register before attending. You do NOT have to be a member of the Philadelphia Sketch Club to participate in the workshops. Our workshops are open to anyone who is interested in drawing, painting or printmaking. All skill levels are welcome. **Fees:** Model workshops: \$8/session members, \$9/session for non-PSC members; Printmaking workshop: \$10/session; All workshops \$6 for full-time students.

Life Model	Costumed Model	Printmaking
<p>Mondays – Extended pose (multi-session): 6:30 PM-9:30PM</p> <p>Monitors: Robert Bohne, Vince Docktor, Dan Kuetemeyer</p> <p>Tuesdays – Extended pose: 12:00 PM to 3:00 PM Monitor: Jacqueline Barnett</p> <p>Wednesdays – Extended pose: 6:30 to 9:30 PM Monitor: Vince Docktor</p> <p>Saturdays – Extended pose: 9:30 AM to 12:30 PM Monitor: Vince Docktor</p>	<p>Thursdays</p> <p>Extended pose</p> <p>12:00 PM to 3:00 PM Monitor: Bob Bohne.</p>	<p>Tuesdays</p> <p>10:00 AM to 2:00 PM Monitor:</p> <p>Elizabeth H. MacDonald</p>
<p>Please Note: Those who use oil paints should bring their own container(s) to remove used solvents. Odorless solvents only.</p>		

Gallery hours: Wednesday, Friday, Saturday, Sunday: 1 PM to 5 PM

November 2015

Call for Volunteers



We have important positions within the PSC that need volunteers to take over! Contact Faad Ghoraishi at faad@sketchclub.org to help out your club with future events.

Still Wanted: Detail oriented members interested in helping us maintain and update our membership database. Our membership database is an important tool that helps us communicate with our members and friends more effectively.

If you have a modicum of computer graphics skills or if you want to learn them, get involved!

Contact us today if you want to help! Ask for Ken Weiner

The Portfolio: The newsletter of the Philadelphia Sketch Club is published monthly. **Editors:** Ken Weiner and Cathy Yang and. Technical support and Web Master: Ken Weiner

Send your member news, announcements and corrections to portfolio@sketchclub.org. The due date for all materials is one week before the end of the month.

The Philadelphia Sketch Club

235 S Camac Street
Philadelphia, PA 19107
(215) 545-9298
<http://sketchclub.org/>
executivedirector@sketchclub.org

Gallery Manager: Michelle Lockamy

Officers:

- President: Richard Harrington
- Vice President: Kenneth Deprez
- Secretary: Fran Carter
- Treasurer: William Patterson

Board of Directors:

- Alice Chung
- Vincent Docktor
- Stephen Iwanczuk
- Kevin Meyers
- Nancy H. Mills
- Brian Siegel
- Amanda Setverson
- Kenneth Weiner
- Joe Winter