

Gallery hours: Wednesday, Friday, Saturday, Sunday: 1 PM to 5 PM

January 2016



This Month's Portfolio

Support Your Sketch Club	2
Membership	3
Sketch Club Activities	4
Dinner Meeting	7
2015 PSC Main Gallery Schedule	8
2015 Stewart Gallery Schedule	8
Calls	9
Art Natters: Members News	10
Member Classifieds	17
Open Workshop Schedule	18
Call for Volunteers	19
{{	

Send your member news, announcements and corrections to portfolio@sketchclub.org. The deadline for ALL submissions is 1 week before the end of the month.

Reminder: It's never too late. You can always renew your membership

You may pay online at <http://sketchclub.org/annual-dues-payment/> or mail your check to:

The Philadelphia Sketch Club

235 S. Camac St.
Philadelphia, PA 19107

For questions please contact the Gallery Manager at 215-545-9298 or email: executivedirector@sketchclub.org

Late Breaking News – See items that were submitted after the publication date. Go to:

<http://sketchclub.org/late-breaking-news/>

The PSC general email is: info@sketchclub

Gallery hours: Wednesday, Friday, Saturday, Sunday: 1 PM to 5 PM

January 2016

Support Your Sketch Club

Contribute

Thanks to our many dedicated supporters. Your generous end-of-the-year contributions to the PSC raised over \$5,000. These funds will be put to good use providing enhanced services to our members and friends. See Chuck Tarr's House Report to see some of the improvements that are planned for the coming year.

As the new year starts, it's not too early to consider additional giving tax deductible financial support to the Sketch Club beyond your basic membership dues. Competition for funding for arts organizations like the Sketch Club is increasingly competitive and total funding for the arts is shrinking. Your additional support will keep the PSC an active support for visual artists in the Metropolitan Philadelphia area.

The Philadelphia Sketch Club is an IRS designated 501(c) (3) non-profit organization which allows your donations to be tax deductible.

You can call the office at 215-545-9298, mail checks to the Sketch Club or visit the Contribute page of our Website to give online at: <http://sketchclub.org/support-us/>

Like, Link & Share

Follow The Philadelphia Sketch Club on Facebook, we have well over 1700 followers. Please click the like button and share your comments and invite your friends to like our page.

Follow @PhilaSketchClub on Twitter, we have almost 400 followers. Please click the heart button and re-tweet our announcements.

Include links on your website, blogs and social media to The Philadelphia Sketch Club to increase traction across social media platforms.



Thanks to **Don Brewer** for managing PSC social media sites.



Gallery hours: Wednesday, Friday, Saturday, Sunday: 1 PM to 5 PM

January 2016

Membership

Become a Member of the Philadelphia Sketch Club!

If you're reading this edition of the Portfolio and you're not a member of the PSC, you should consider joining the more than 200 other Philadelphia area artists who have. The PSC is one of the most active visual art venues serving center city Philadelphia. The PSC is a hands-on organization that offers its members the opportunity to participate in all aspects of creating and presenting work to the public. It presents over 20 scheduled group and solo exhibitions annually and offers a wide range of daily workshops. [Get info and an application here.](#)

If you are a member of the PSC, please feel free to share the Portfolio with your artist friends and encourage them to become members.

Membership Renewal

As reported in the December Portfolio, this year, we've modified our membership renewal processing. In addition to our standard billing process, we've added an automated email reminder system. With this system, we hope to provide better service by routinely communicating your membership status to you.

Many of you will have received a reminder notice. Since this is a new process, in some instances, there will be errors due to incorrect dates, etc. If you think that is the case with notifications you receive, please don't hesitate contact us at <mailto:membership@sketchclub.org>. We will resolve any issues that surface.

Ken Weiner, Membership Chair

New Members this Month

The Sketch Club welcomes new members recently approved by the Board of Directors.

- Anne Kullaf
- Judith Tellefsen

In Memoriam – John Kogel

We are saddened to report the death of our friend, fellow Club member and artist John Kogel. John died on December 23rd in Grand View Hospital following complications from pneumonia. He was 91. Memorial services will be held on Saturday, January 2nd, at 11 am in St. John's Lutheran Church Ridge Valley, 910 Allentown Road, Sellersville, PA 18960, where you may call from 10 to 11 am.

Gallery hours: Wednesday, Friday, Saturday, Sunday: 1 PM to 5 PM

January 2016

Sketch Club Activities

House Chair Report

The month primarily was spent cleaning the kitchen and dining room from dust resulting from the renovation of the pantry and basement stairwell exterior wall and rear porch deck and stairs. Even with plastic covering the doorways, dust permeated the occupied areas. Additionally, in the Library, with both sets of doors closed (exterior and storm doors) and with exterior plastic over them, dust still penetrated the Library and the Stewart Gallery. I had help from Tom Kohlmann who meticulously cleaned tables and chairs and cleaned both floors each time there was a breach.

Everything in the kitchen i.e., dishes, silverware and glassware, serving bowls and trays and shelving and all surfaces needed to be cleaned in order to have it acceptable for use for the Holiday Party and for our regular use. Items in the dining room will be cleaned as time permits. In doing so, I plan to take an inventory of what we have as it relates to the number of dishes and types of glassware. I noticed that we have several single items of dishes and glasses that do not belong to a set purchased by the Club.

With the help of Tom Kohlmann, I moved the liquor and Philustration prints into the pantry on tables (temporarily) to get space in the dining room. The exterminator was in the building on December 2nd for a treatment. I accompanied the representative during his visit. The firm is on a quarterly schedule. A new hot/cold water cooler was installed in our Gallery on the second floor by our water service provider this month.

Chuck Tarr, House Chair

Gallery hours: Wednesday, Friday, Saturday, Sunday: 1 PM to 5 PM

January 2016

Sketch Club Activities

Key Circle Volunteers

The story behind the “Key Circle” volunteer group

There are many types of volunteer activities that are essential to maintaining the Sketch Club as a vibrant art club and showcase for outstanding art. For the last year a small group of member volunteers dubbed the “Key Circle” has been working to help the Club be reliably open during scheduled weekend gallery hours, as well as drop-off and pick-up sessions, jurying sessions, etc. – all the background work that goes into putting on each show.



**GALLERY
OPEN**

Admission is Free



We are dubbed the “Key Circle” because each of us has direct access to open the club. This also means that one of our 8 member group should be signed up for each session so the other volunteers can be assured of access. Equally importantly, Key Circle members quickly become more familiar with many aspects of Sketch Club functioning – and thus more comfortable handling all manner of situations.

This past year, over 50 total volunteers staffed the galleries on weekends, drop-off and pick-up events. Even though many volunteered just a few times during the year, those numbers added up to fully staffed shows for much of the year, at least until the busy fall season. It would make all the difference going forward if the Key Circle group could be expanded from its current 8 members to 12 or more, and if we could gain a modest increase in volunteering from the group of 50 volunteers, or add a few more volunteers. Perhaps members could add a volunteer session for every show in which they get a work accepted. Then invite your friends and colleagues to visit the club when you are there. Just a thought!

If you are now curious about joining the key circle, or just interested in becoming more knowledgeable about how to do certain things as a regular volunteer, the next time you volunteer ask your Key Circle partner to explain things more fully. Are you mystified by what to do if someone inquires about buying a work of art when no one is there to open the office? How to turn up the thermostat? How to buzz a visitor in? No one learns these things overnight, or just from reading a set of instructions. (However, there is a detailed lime-green Volunteer notebook in the hall outside the office that contains all sorts of useful information about the club.) For those who are considering stepping it up a notch to become a key circle member, consider that volunteering event your first “training session” to become a key circle person.

To get more information, please contact:

- Lauren Sweeney lsweeney1@verizon.net
- Marilee Morris mmorris.art@gmail.com
- Faad Ghoraishi fghoraishi@yahoo.com

Gallery hours: Wednesday, Friday, Saturday, Sunday: 1 PM to 5 PM

January 2016

Sketch Club Activities

Critique Night: Every third Wednesday Night

This month: January 20 at 7:00 PM

Critique Night is held in the Library of the Sketch Club every third Wednesday beginning at 7 PM. Bring work you've finished, work in progress, or just sketches for work you're planning! Photos, digital work, drawings, all mediums are welcome; we can project digital images on a screen for review, so you have the option to show work that may be too big or too heavy to transport to the Club. There is no one individual directing the critique, just your fellow artists and peers



Philadelphia Sketch Club Photographer's Circle

Meeting: Thursday, January 14th, 2016 from 6:30 to 8:30

PSC Photo Circle presents the work of Natalie L.

The next Photographer's Circle Meeting at the Philadelphia Sketch Club is scheduled for Thursday, January 14, 2016 from 6:30 to 8:30 pm. Natalie L., a thoroughly inspiring photographer, will present her expressive images.

Her presentation will consist of portraits, figures, nature and architectural imaging. This event promises to be truly superlative! So please make an effort to attend this unique event.

You can contact Steve anytime at si22@drexel.edu or 215-300-9192 (cell). **Steve Iwanczuk**

Photo Circle Monitor and Member of Philadelphia Sketch Club Board of Directors



Gallery hours: Wednesday, Friday, Saturday, Sunday: 1 PM to 5 PM

January 2016

Dinner Meeting

Members' Dinner Meeting
Presentation Open to the Public
Friday January 8, 2016

Presentation by Sharon Shaw

New this year!

Dinner for the first meeting of 2016 is provided by recently opened *Pizzeria Chappelli* a neighbor of the PSC located nearby on 13th St. Dessert is from *Cake and the Bean Stalk*, another local business. And, dinner will be served on the Club's china and flatware to add a new dimension our dining experience.

MENU

- *Garden Salad*
- *Rolls & Butter*
- *Chicken Cacciatore*
- *Pasta and Broccoli*
- *Roasted Potatoes*
- *Assorted Cookies*
- *Coffee*

AGENDA

- 5:30- Social Period Begins
- 6:15- Speaker: Sharon Shaw
- 7:15- Dinner

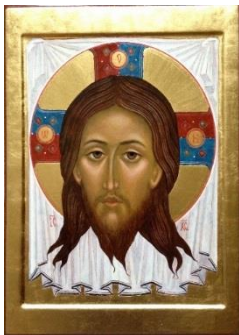
DINNER

- Members - \$16
- Guests - \$18

RSVP by Wed, January 6th at 12 NOON

Thanks to Chuck Tarr for organizing dinner. Chuck would appreciate a volunteer or two to help with clean-up after dinner.

Sharon Shaw, will present a program on Icon Painting. Sharon creates historical Religious Icon paintings done in the Russian Byzantine style using historical methods and materials. She also creates portraits and landscapes in other mediums such as oil and silverpoint.



Sharon has commission Religious Icons, oil portraits, posthumous portraits and landscapes in private and public collections. She has studied at PAFA, Barnstone Studio as well as a number of workshops with nationally known artists and studies Icon painting with the Prosopon School. Sharon will be discussing her symbolism and process used to create religious Icon paintings using egg tempera.



Gallery hours: Wednesday, Friday, Saturday, Sunday: 1 PM to 5 PM

January 2016

2015 PSC Main Gallery Schedule

2016 Annual Domenic DiStefano Memorial Works on Paper Exhibition

January 2-24, 2016

Reception:

Sunday Jan 10, 2016 2-4 PM at
PSC



2015 Stewart Gallery Schedule

2015 Annual Volunteers Exhibition:

December 4 – 24, 2015

Held over through Jan 31

Show Chair: **Lauren Sweeney**



Gallery hours: Wednesday, Friday, Saturday, Sunday: 1 PM to 5 PM

January 2016

Calls

PHILADELPHIA SKETCH CLUB
235 SOUTH CAMAC STREET
PHILADELPHIA, PA 19107
Between 12th and 13th Sts.,
Locust and Spruce Sts.
SCHOOL DISTRICT OF PHILADELPHIA

OFFICE OF ACADEMIC ENRICHMENT AND SUPPORT

The 32nd Annual HIGH SCHOOL ART SHOW

February 1-28, 2016

YOU ARE CORDIALLY INVITED TO
THE CLOSING RECEPTION
AND AWARDS CEREMONY

SUNDAY, FEBRUARY 28, 2:00-4:00 PM

GALLERY HRS.: W.F.SAT.SUN. 1-5 PM

IMAGE "Glen Foerd," watercolor - Yuliya Lyakhovolsk, Gr.12
Arts Academy at BenjiRush, Judges' Choice, PSC HS Art Show, 2015



RECEPTION, AWARDS AND TAKE DOWN
February 28, 2016

JUDGING FOR AWARDS
Wed. February 3, 2016, 10 AM

JUDGES:

- Leslie Clemons Carr, Artist, Retired Art Teacher
- Melvena Quillen, Artist, Retired Art Teacher
- John Fantine, Artist, Retired Art Teacher

Once again it is time to start planning for the HS Art Show, (2016). As usual we will be asking our loyal generous members for tax deductible contributions for awards for the young artists' artwork. Please, make your check out to the "Philadelphia Sketch Club", with a note in the lower left corner "HS Art Show Award" and mail it or bring it to the PSC office, Michelle Lockamy, Executive Director. Her hours are Wed, and Fri. 11:00 - 5:00 PM.

Also PLEASE notify the amount of your award to Dorothy Roschen, in person, by phone (215 848 3257) or email (droschen@me.com). Any amount is gratefully needed and appreciated. We do like each awardee to receive at least \$25.00. To achieve this, we combine donors for one award and some donors give multiple awards. Every donor is recognized on either a plaque next to the awarded work or on a posted complete awards list in the gallery, which is also in the catalogue. (Award amounts are not posted.)

Deborah Klose, Director of Art Education, School District of Philadelphia, has sent the call to entry letters to all HS Art Teachers. (About 25 - 30 usually respond). To volunteer to help the Art Teachers hang the artwork on the delivery days (Feb. 27, 28 & 29 from 3 - 6 PM) let Dorothy know or to

sign up - go to the "Volunteers" link under the membership tab on the PSC website. Food donations for the reception will be asked for closer to that date.

Thank you, members, for your wonderful support for this show. It would be absolutely impossible without you.

- Dorothy Roschen, Chairperson, 2016 HS Art Show, (215 848 3257); droschen@me.com
- Deborah Klose, Director of Art Education Office of Academic Enrichment and Support, School District of Philadelphia

Gallery hours: Wednesday, Friday, Saturday, Sunday: 1 PM to 5 PM

January 2016

Calls

Academy House, at 15th and Locust Streets, is looking for art works to put on the walls of its newly restored lobby. To obtain information about the specifications for this artwork, contact David Gounis, at 215-735-9096. David Gounis is the General Manager.

You may also send an E-Mail requesting this information to: frontdesk.academyhouse@gmail.com.

Robert Mezey

Sketch Club member

Art Natters: Members News

Nancy E. F. Halbert will be showing pastel, acrylic and oil paintings in a Faculty showing in the Welcome Gallery of the Main Line Art Center from January 12th to February 15th at 746 Panmure Road, Haverford, PA 19041.



"A Way to Cross", has been accepted into The Philadelphia Sketch Club's Works on Paper Show



North Carolina Lake, acrylic on paper, 17x12"

Nancy will also be teaching The Art of the Sketchbook and Tools to Painting on Tuesdays from 6:30 to 9:30 starting January 26th at the Main Line Art Center.

For more information please visit www.mainlineart.org or contact 610-525-0272.

Gallery hours: Wednesday, Friday, Saturday, Sunday: 1 PM to 5 PM

January 2016

Art Natters: Members News

The Athenæum of Philadelphia's 2015 Art Exhibition and Sale Features Sketch Club members

Sketch Club members **Ted Lewis** and **John Schmiechen**, who chaired the Athenæum's 2014 exhibit, returned this year to lead another successful exhibition, *Industrial Philadelphia Past and Present*. The exhibit celebrated the significant role that the Philadelphia region has played, and continues to play, in our country's industrial life.

Acceptance was very competitive as nearly 200 artists entered the show, but only forty-seven were chosen. The accepted fifty-five works were on display for the month of December in the Athenæum's Dorothy W. and F. Otto Hass Gallery on Washington Square. On December 6, over 200 people attended the opening reception. Guests enjoyed wine and hors d'oeuvres as they circulated through the Athenæum's magnificent rooms.



Ted Lewis and John Schmiechen, Exhibit Chairs



Exhibit Reception, Athenæum Gallery

Sketch Club members walked off with top prizes. Dino Sistilli was awarded first prize for his oil painting of the Ben Franklin Bridge and Rich Harrington took second place with his watercolor of a train from the past. Additional Sketch Club members Ronnie Bookbinder, Nathalie Borozny, Ricki Brandschain, Dan Cook, and John Schmiechen also had entries selected by the jury.

Part of the proceeds from the numerous sales will benefit the restoration of works in the Athenæum's collection, including those by Thomas Sully, Miriam Peale, Henry Inman, and Joseph Ord.

Gallery hours: Wednesday, Friday, Saturday, Sunday: 1 PM to 5 PM

January 2016

Art Natters: Members News

Annette Alessai's painting *Newlin Mills Waterfall* won 1st place in the Professional Category of the Lenses on Newlin Juried Show! Check out more of Annette's paintings at <http://facebook.com/AlessiCreations>.



Newlin Mills Waterfall

Pete Quarracino will be exhibiting in the Academy of Notre Dame 2016 Fine Art Show & Sale, Open to the public Saturday January 30 to February 6, 2016.



Blue Moon – Pete Quarracino

Gallery hours: Wednesday, Friday, Saturday, Sunday: 1 PM to 5 PM

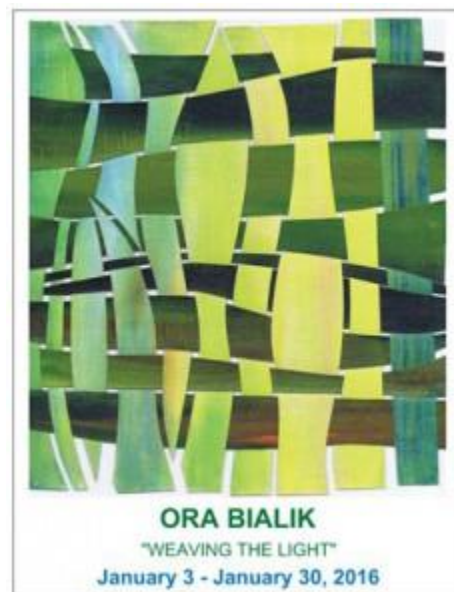
January 2016

Art Natters: Members News

Ora Bialik, PhD



Ora Bialik is an expressive colorist artist. She works with a variety of media, including traditional oil painting, abstract acrylic, watercolor, ink, print making, and beading. Ora developed a unique style, in which she paints on canvas, cuts the canvas, and weaves it back. This creates a three dimensional impression of colors and forms, in a two dimensional world. Ora had solo exhibitions in Hadas Gallery, Brooklyn, NY; Martins Run, Media, PA. She participated in group exhibitions at DaVinci Art Alliance, Samuel S. Fleisher Art Memorial, The Old City Jewish Art Center, PAFA, Philadelphia Community College and Haifa University, Israel. She has won awards in painting and photography. Ora is an Israeli born artist.



Graduated from the Pennsylvania Academy of Fine Arts (PAFA), Certificate Program; Received an Associate degree in Art, with high honors from the Community College of Philadelphia, and holds a Ph.D. degree in mathematics and statistics, from Case Western Reserve University (CWRU), Cleveland, OH.

Ora's artwork appears in private collections in Philadelphia, Georgia, New York and Israel. You may also view her works at www.orabialik.com. January 3, 2016

Gallery hours: Wednesday, Friday, Saturday, Sunday: 1 PM to 5 PM

January 2016

Art Natters: Members News

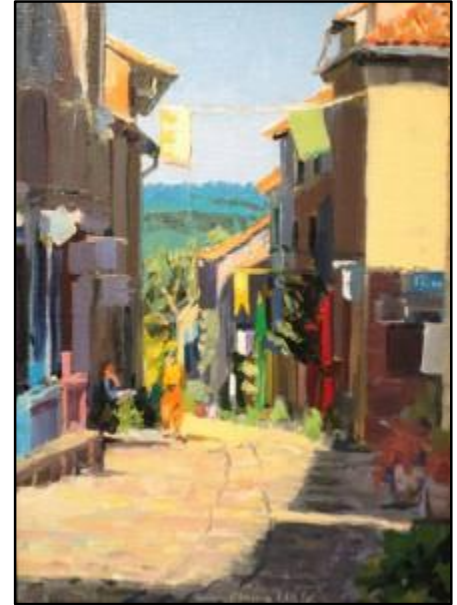


After long consideration Drew Saunders, friend and gallery owner has decided to close Newman and Saunders Gallery after 34 years.

While I am sad to see it go I know the time is right. So if you are in the area on January 2, 2016 from 3-6 stop in to say good by to the Gallery, the artist and to Drew.

I will be there showing work from my latest travels and hope to see a good crowd.

Joe Sweeney



Morning Stroll Cordes 12 x 9 oil on board
Elaine Lisle

WAYNE, PA – December 15, 2015 – After 34 years in Wayne, Drew Saunders of Newman and Saunders Galleries is bringing together his premiere area artists to celebrate the gallery's legacy with a "final show" at its Bloomingdale Avenue location



Harbor Clouds Oil /W.C.Paper 14x17" framed ©
Sweeney, Joseph 11/18/2015

The show will include nationally recognized local artists including Valerie Craig, Elaine Lisle, Nancybea Miller, George Rothacker, Joe Sweeney and Mashiul Chowdhury. They will be together for an afternoon event on Saturday, January 2nd from 3:00 to 6:00pm.

"The art community is changing, " said Drew Saunders, surviving partner of Teddi Newman and himself that set the Main Line on the map in 1981 when they brought American Impressionism, Contemporary French Modernists and important Marine Art to the Main Line. "We loved the challenges and the risks of what we were doing as we traveled the world in search of relevant art for a new age of collector."

Gallery hours: Wednesday, Friday, Saturday, Sunday: 1 PM to 5 PM

January 2016

Art Natters: Members News

We found artists such as Serge Hollerbach, Donald Vogel, DeLoss McGraw, Tom Palmore, John Salminen and numerous French and English painters that are now the treasure trove of the modern collector's portfolio.



Industrial Highway-5" . Oil on paper
mounted on board and size : 6x6 in.
Mashiul Chowdhury

According to Rich Merriman, CEO of Pennsylvania Trust in Radnor which owns some of the premiere work of American regionalism of the 20th and 21st centuries, "Drew introduced us all on the Main Line to paintings and sculpture never before available in this area. Through the gallery's exhibitions and amazing "stable of artists", this area was afforded the rare opportunity to procure some of the finest artwork available anywhere."



Hudson Thaw 16x20" oil by Valerie Craig

The "Last Picture Show" on January 2 will feature new work by some of the prominent artists of the area, and will be the last time that Newman and Saunders will present an exhibition.

"All of the artists will be there to tell about their past , their motivation and their future," said Drew Saunders. "Old friends and new will gather as in the day of the salon shows in Paris to meet and greet, talk about their work and the directions of art in the days to come.

The event is on Saturday, January 2, 2016 from 3-6. The gallery is located at 120 Bloomingdale Avenue in Wayne and can be reached at 610-293-1280. www.newmansaundersgallery.com

Gallery hours: Wednesday, Friday, Saturday, Sunday: 1 PM to 5 PM

January 2016

Art Natters: Members News

Anne Kullaf will have her painting entitled "Distance" featured in the upcoming faculty exhibition at the Visual Arts Center of New Jersey. The exhibit is called "Guide Ropes & Live Wires: Works by the Art Center Faculty" and will be on exhibit in the main gallery from January 29 through March 30, 2016. Forty of the art center's faculty will be participating in the exhibition which features works in all media including painting, sculpture and photography. The opening reception is on Sunday, January 31, from 2 - 4 pm. The reception happens to coincide with a workshop Anne is teaching for artists who wish to learn the basics of working in pastel. The workshop, The Right Start: Pastel for Beginners, runs from 10 am to 4 pm and includes all materials. For information on both the exhibit and the workshop, visit the Visual Arts Center of New Jersey web site at www.artcenternj.org.



Distance



Blue box -detail

Ken Weiner invites all to his a one-person exhibition "Abstract Explorations" in the Staircase Art Gallery at the Or Hadash Synagogue located at 190 Camp Hill Road, Fort Washington, PA 19034.

The exhibition opens Monday January 18th. There is a reception in the Gallery, open to the public, on Friday the 22nd at 9:00 pm after the Oneg Shabbat (services strat at 8:00P.M.) Contact Ken through info@sketchclub.org for more information.

Gallery hours: Wednesday, Friday, Saturday, Sunday: 1 PM to 5 PM

January 2016

Member Classifieds

Photography Services for Artists

Do you need high-quality digital images of your work? Is glare a problem? Color balance not quite right? I can help you get great images of your 2-D or 3-D work suitable for digital file output or output for presentation and hard-copy presentation. I offer flexible availability, willingness to travel, special pricing for Sketch Club members. Contact: **Ken Weiner**

note2kenweiner@verizon.net;
215-280-6325.

Gallery hours: Wednesday, Friday, Saturday, Sunday: 1 PM to 5 PM

January 2016

Open Workshop Schedule

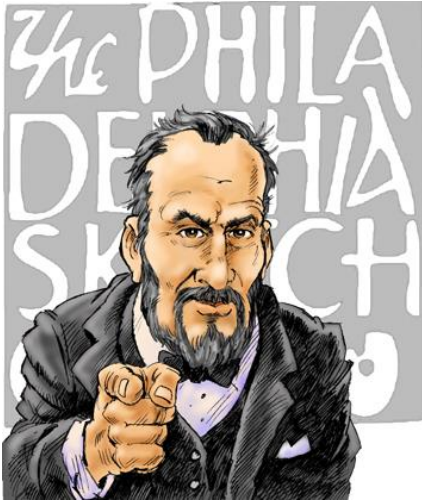
All workshops are open to the public. There is no need to register before attending. You do NOT have to be a member of the Philadelphia Sketch Club to participate in the workshops. Our workshops are open to anyone who is interested in drawing, painting or printmaking. All skill levels are welcome. **Fees:** Model workshops: \$8/session members, \$9/session for non-PSC members; Printmaking workshop: \$10/session; All workshops \$6 for full-time students.

Life Model	Costumed Model	Printmaking
<p>Mondays – Extended pose (multi-session): 6:30 PM-9:30PM</p> <p>Monitors: Robert Bohne, Vince Docktor, Dan Kuetemeyer</p> <p>Tuesdays – Extended pose: 12:00 PM to 3:00 PM Monitor: Jacqueline Barnett</p> <p>Wednesdays – Extended pose: 6:30 to 9:30 PM Monitor: Vince Docktor</p> <p>Saturdays – Extended pose: 9:30 AM to 12:30 PM Monitor: Vince Docktor</p>	<p>Thursdays</p> <p>Extended pose</p> <p>12:00 PM to 3:00 PM Monitor: Bob Bohne.</p>	<p>Tuesdays</p> <p>10:00 AM to 2:00 PM Monitor: Elizabeth H. MacDonald</p>
<p>Please Note: Those who use oil paints should bring their own container(s) to remove used solvents. Odorless solvents only.</p>		

Gallery hours: Wednesday, Friday, Saturday, Sunday: 1 PM to 5 PM

January 2016

Call for Volunteers



We have important positions within the PSC that need volunteers to take over! Contact Faad Ghoraishi at to help out your club with future events.

The Portfolio: The newsletter of the Philadelphia Sketch Club is published monthly. **Editors:** Ken Weiner;
Technical support and Web Master: Ken Weiner
Send your member news, announcements and corrections to portfolio@sketchclub.org. The due date for all materials is one week before the end of the month.

The Philadelphia Sketch Club

235 S Camac Street
Philadelphia, PA 19107
(215) 545-9298
<http://sketchclub.org/>
executivedirector@sketchclub.org

Gallery Manager: Michelle Lockamy

Officers:

- President: Richard Harrington
- Vice President: Kenneth Deprez
- Secretary: Fran Carter
- Treasurer: William Patterson

Board of Directors:

- Alice Chung
- Vincent Docktor
- Stephen Iwanczuk
- Kevin Meyers
- Nancy H. Mills
- Brian Siegel
- Amanda Setverson
- Kenneth Weiner
- Joe Winter

Sketch Club - 235 South Camac Street - Philadelphia PA 19107 - 215-545-9298
Organization under Chapter 501(c)(3) of the Internal Revenue Code.