

Gallery hours: Wednesday, Friday, Saturday, Sunday: 1 PM to 5 PM

June 2016



Robin Crowley: Infinity Pool Puerto Rico

## This Month's Portfolio

Support Your Sketch Club: Join, Renew, Donate, Volunteer	2
Membership	4
Sketch Club Activities	5
Dinner Meeting	8
2016 Main Gallery Schedule	9
2016 Annual PSC Workshop Show:	10
Reception: Sunday June 26, 2016, 2 – 4 PM at PSC	10
2016 Stuart Gallery Schedule	11
Art Natters: Members News	12
Calls for Work and Notices	27
Member Classifieds	31
Sketch Club Open Workshop Schedule	32
Call for Volunteers	33
Send your member news, announcements and corrections to <a href="mailto:portfolio@sketchclub.org">portfolio@sketchclub.org</a> . The deadline for ALL submissions is 1-week before the end of the month.	

Reminder: It's never too late. You can always renew your membership

You may pay online at

<http://sketchclub.org/annual-dues-payment/>

or mail your check to:

The Philadelphia Sketch Club

235 S. Camac St.

Philadelphia, PA 19107

For questions please contact the Gallery

Manager at 215-545-9298 or email:

[executivedirector@sketchclub.org](mailto:executivedirector@sketchclub.org)

Late Breaking News – See items that were submitted after the publication date. Go to:

<http://sketchclub.org/late-breaking-news/>

The PSC general email is: [info@sketchclub.org](mailto:info@sketchclub.org)

Gallery hours: Wednesday, Friday, Saturday, Sunday: 1 PM to 5 PM

June 2016

## Support Your Sketch Club: Join, Renew, Donate, Volunteer

### Contribute

Please consider making your tax deductible contribution now. These funds will be put to good use providing enhanced services to our members and friends.

Membership dues cover only a small portion of the PSC's operating expenses. Competition for funding for arts organizations like the Sketch Club is increasingly competitive and total funding for the arts is shrinking. Your additional support will keep the PSC an active support for visual artists in the Metropolitan Philadelphia area.

The Philadelphia Sketch Club is an IRS designated 501(c) (3) non-profit organization which allows your donations to be tax deductible.

You can call the office at 215-545-9298, mail checks to the Sketch Club or visit the Contribute page of our Website to give online at: <http://sketchclub.org/support-us/>

## Support the Sketch Club when you purchase from Amazon, use Amazon Smile

### The Sketch Club's AmazonSmile Link:

<http://smile.amazon.com/gp/charity/homepage.html?orig=%2Fgp%2Fbrowse.html%3Fnode%3D502659011&ein=23-6291644>

Thank you for your participation in the AmazonSmile program.

Purchases made by Sketch Club supporters using AmazonSmile in May resulted in a \$27.15 AmazonSmile contribution to the PSC. It's not much, but every cent helps. So don't forget, use the above link when purchasing from Amazon and increase the PSC's income.

### What is AmazonSmile?

AmazonSmile is a simple and automatic way for you to support your favorite charitable organization every time you shop, at no cost to you. When you shop at smile.amazon.com, you'll find the exact same low prices, vast selection and convenient shopping experience as Amazon.com, with the added bonus that Amazon will donate a portion of the purchase price to your favorite charitable organization. You can choose from nearly one million organizations to support.

To learn more about AmazonSmile go to: <http://smile.amazon.com/gp/aw/ch/about>

Gallery hours: Wednesday, Friday, Saturday, Sunday: 1 PM to 5 PM

June 2016

## Support Your Sketch Club: Join, Renew, Donate, Volunteer

### Volunenteer Needed

Chuck Tarr has been managing the arrangements for the Monthly Member Dinners. He has been doing a magnificent job of arranging the menus and logistics for more than a year. Chuck is also the House Manager, a job that is extremely demanding and time consuming. In order to devote his full attention to the House Manager responsibilities, Chuck will no longer be able to manage the dinners.

We are now seeking a PSC member with great organizational skills to assist in managing the Member Dinner arrangements. If you want to get involved in this important PSC activity, please contact us ACAP at: [executivedirector@sketchclub.org](mailto:executivedirector@sketchclub.org)

### Like, Link & Share

If you're not following the Philadelphia Sketch Club on Facebook re-tweeting Sketch Club tweets yet, it's time that you did. We have well over 1700 followers. Get the word out about the Sketch Club. Please click the like button and share your comments and invite your friends to like our page.

Follow @PhilaSketchClub on Twitter, we have almost 400 followers. Please click the heart button and re-tweet our announcements.

Include links on your website, blogs and social media to The Philadelphia Sketch Club to increase traction across social media platforms.

Follow us on Facebook Twitter now!

Thanks to Don Brewer for managing PSC social media sites.



Gallery hours: Wednesday, Friday, Saturday, Sunday: 1 PM to 5 PM

June 2016

## Membership

### Become a Member of the Philadelphia Sketch Club!

If you're reading this edition of the Portfolio and you're not a member of the PSC, you should consider joining the more than 200 other Philadelphia area artists who have. The PSC is one of the most active visual art venues serving center city Philadelphia. The PSC is a hands-on organization that offers its members the opportunity to participate in all aspects of creating and presenting work to the public. It presents over 20 scheduled group and solo exhibitions annually and offers a wide range of daily workshops. [Get info and an application here.](#)

If you are a member of the PSC, please feel free to share the Portfolio with your artist friends and encourage them to become members.

### Membership Renewal

You can check the status of your membership by going to the Current Members page on the PSC web-site: <http://sketchclub.org/sample-page/memberspace/>. All current members are listed. An asterisk (\*) means that the membership has expired but is within the 60-day grace period for renewal. Names in red are active links to the individual's web site.

Renew Now! <http://sketchclub.org/annual-dues-payment/>

**If you have any questions about your membership, please don't hesitate contact us at [membership@sketchclub.org](mailto:membership@sketchclub.org) or call the office: 215-545-9298.**

### New Members this Month

The Sketch Club welcomes new members recently approved by the Board of Directors.

- Kit Kazmeir
- Richard Grote
- Irul Abidin
- Nancy Granada
- Monica S. Lynn

Current Sketch Club members can review new member applications at: <http://sketchclub.org/member-applications/>. The members only section and documents are password protected. If you've forgotten the password, please contact Ken Weiner at: [membership@sketchclub.org](mailto:membership@sketchclub.org).

Gallery hours: Wednesday, Friday, Saturday, Sunday: 1 PM to 5 PM

June 2016

## Sketch Club Activities

### Results of the 2016 Annual Election for Board of Directors and Officers

The annual Philadelphia Sketch Club Election for the Board of Directors and officers occurred at the May Members Dinner Meeting on Friday, May 13th.

#### Here are the results:

##### Officers:

- President: Richard Harrington
- Vice President: Kenneth Weiner
- Secretary: Fran Carter
- Treasurer: William Patterson

##### Board of Directors

- Vincent Docktor
- Melanie Dion
- Stephen Iwanczuk
- William Kosman
- Kevin Myers
- Nancy H. Mills
- Brian Siegel
- Charles F. Tarr
- Joe Winter



### Critique Night: Every third Wednesday Night

**This month: June 15 at 7:00 PM**

**Open to PSC Members and Non-Members**

Critique Night is held in the Library of the Sketch Club every third Wednesday beginning at 7 PM. Bring work you've finished, work in progress, or just sketches for work you're planning! Photos, digital work, drawings, all mediums are welcome; we can project digital images on a screen for review, so you have the option to show work that may be too big or too heavy to transport to the Club. There is no one individual directing the critique, just your fellow artists and peers





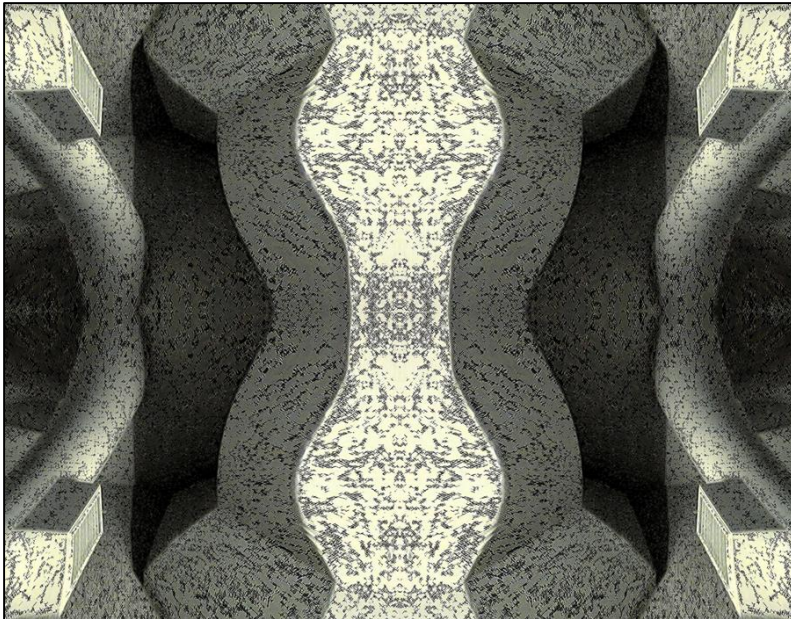
Gallery hours: Wednesday, Friday, Saturday, Sunday: 1 PM to 5 PM

June 2016

## Sketch Club Activities

### Philadelphia Sketch Club Photographer's Circle

**Meeting: Thursday, June 9, 2016 from 6:30 to 8:30 PM**



The next Photographer's Circle Meeting at the Philadelphia Sketch Club will occur on Thursday, June 9, 2016 from 6:30 to 8:30 pm. Please create or bring an EXPRESSIVE photograph, one that resonates with your sense of aesthetics, or just a great print. . . quite simply as an impetus for discussion.

You can contact Steve anytime at [si22@drexel.edu](mailto:si22@drexel.edu) or 215-300-9192 (cell).

**Steve Iwanczuk**

Photo Circle Monitor and Member of Philadelphia Sketch Club Board of Directors

Gallery hours: Wednesday, Friday, Saturday, Sunday: 1 PM to 5 PM

June 2016

## Sketch Club Activities

### Thursday Workshop BBQ

Here are some photos of guests and organizers taken at the recent Thursday workshop BBQ. Thanks to chef Jackie Barnett and guest chef Roy Ziegler for cooking up storm.



a

Gallery hours: Wednesday, Friday, Saturday, Sunday: 1 PM to 5 PM

June 2016

## Dinner Meeting

### Members' Dinner Meeting

#### Dinner Open to the Public

**Friday June 10, 2016**

The PSC caterer is Pizzeria Chappelli, 209 South 13th Street. Desserts are from Cake and the Beanstalk from 1112 Locust Street.

**Please RSVP to Michelle in the PSC office by 12 Noon  
June 8, 2016**

#### AGENDA

- 5:30- Social Period Begins
- 6:15-Guest Speaker: Linda Carol Gray
- 7:15- Dinner

#### DINNER

- Members - \$16
- Guests - \$18

### About Our Guest Speaker

Linda Carol Gray left a life-time career in public schools to more seriously study the lettering arts and illustration. She began her business, Linda Carol Arts, a full-service calligraphy design and art studio. Linda studies annually with world's best known artists through her participation with the International Association of Master Penmen Engrossers and Teachers of and writing by traveling all over the country annually and also serves on their Executive Board. Linda also participates actively with the Philadelphia Calligraphers' Society and gives basic calligraphy classes locally. In addition, she is a member of the Society of Scribes, New York, the Doylestown Art League, is chairing the Audubon Art of the Barn Tour, is a ministry leader at her church and has been active in the Doylestown business community. Linda Carol Arts is a full time working studio and visitors are welcome daily by appointment.

For the June meeting Linda Carol will present an overview of written communication over the centuries with an emphasis on how writing systems developed in the US after the Civil War; how The Industrial Revolution brought on the era of "the Golden Age of Calligraphy," how it was used and the importance of written communication in the developing world of business; who the Master Penmen were; and how it all changed with the typewriter and use of the ballpoint pen and the computer. She will also discuss today's technology and the impact it's having on our youth today and public education, how we use hand calligraphy today, and who the living masters are and how they use their craft as a fine art form.

**Thanks to Chuck Tarr for organizing dinner. Chuck would appreciate a volunteer or two to help with clean-up after dinner.**





Gallery hours: Wednesday, Friday, Saturday, Sunday: 1 PM to 5 PM

June 2016

## 2016 Main Gallery Schedule

Still Time to See the Members Exhibition – Closes June 4

# THE ANNUAL MEMBERS EXHIBITION PHILADELPHIA SKETCH CLUB

**MAY 13TH THROUGH JUNE 4TH 2016**

**FEATURING : PAINTING • DRAWING  
PHOTOGRAPHY • AMAZING WORKS OF  
ART UP TO BUT NOT EXCEEDING FORTY  
INCHES! ONLINE ENTRY DEADLINE: MID-  
NIGHT SUNDAY MAY 1, 2016 DELIVERY:  
MAY 6- 7, 2016 1 TO 5 PM PICKUP: JUNE  
5 AND 7, 2016 1-5 PM.**



**Reception Sunday May 22, 2016, 2-4 PM at PSC.  
Enter FREE On Line at [www.sketchclub.org](http://www.sketchclub.org)  
Entry open to PSC Members Only, Please!**

Gallery hours: Wednesday, Friday, Saturday, Sunday: 1 PM to 5 PM

June 2016

## 2016 Main Gallery Schedule

### 2016 Annual PSC Workshop Show:

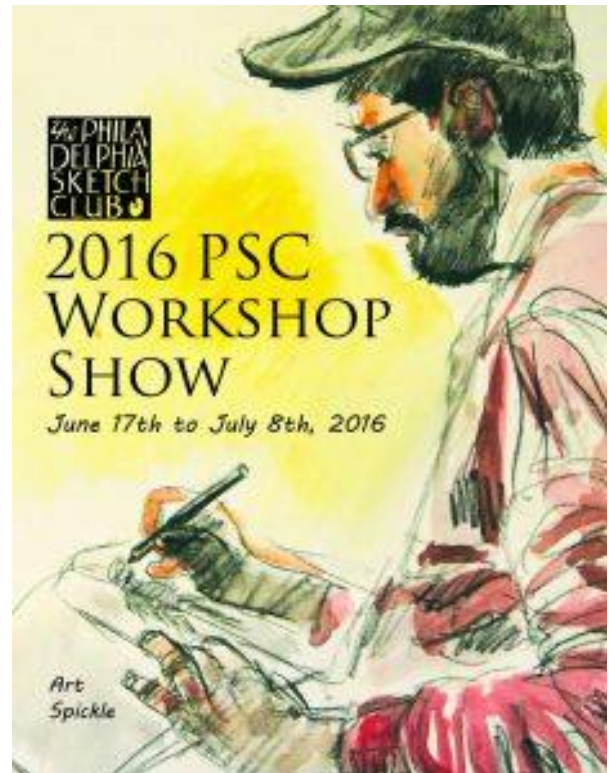
Reception: Sunday June 26, 2016, 2 – 4  
PM at PSC

The workshops facilitated by **Betty McDonald, Vince Docktor, Robert Bohne** and **Jacqueline Barnett** are having their annual Workshop Exhibition in the upstairs gallery from June 17th to July 8th. We are anticipating many workshop members will submit their drawings, paintings, pastels and watercolors for this show. There will be no charge for submissions and everyone who submits work is guaranteed that at least two pieces (if not more) will be shown in the exhibition.

The workshops provide a wonderful opportunity to draw from an unclothed or clothed model, to experiment with a variety of media, to work in a welcoming and non-threatening atmosphere, at their own level and pace. Viewing other artists/ works encourages growth and knowledge about techniques and styles. There is a whole spectrum of possibilities within each workshop, from a study in basic anatomy, color, form and composition to unique interpretations of the figure and the print. In the print workshop, led by Betty McDonald, in the basement Tuesdays from 10 to 2 many techniques from wood cutting, drypoint etching and monotype are explored.

Anyone wishing more information about the workshops or the exhibition may contact <mailto:jbarnett12@verizon.net>. Please include the Workshop Exhibition in the subject area.

Jacqueline Barnett, Chai  
Michelle Lockamy, Co-Chair



Gallery hours: Wednesday, Friday, Saturday, Sunday: 1 PM to 5 PM

June 2016

## 2016 Stuart Gallery Schedule

### The PSC Invitational Artist Show

#### Maria Kurtzman – One-person show

June 3 – 30, 2016

#### Reception

Sunday June 26, 2016 2-4 PM  
at PSC



#### Exhibition Schedule and Events Calendar Always Available at [sketchclub.org](http://sketchclub.org)

Don't forget, you can always see the schedule for the coming year on the PSC web-site. Go to the Current Exhibits menu and select Exhibition Schedule. Here's the link: <http://sketchclub.org/exhibitions/>. And new for this year, we've added an Events Calendar under the Calendars menu. This calendar will show a complete list of the dates for important activities and deadlines. See it here: <http://sketchclub.org/calendar/>

Gallery hours: Wednesday, Friday, Saturday, Sunday: 1 PM to 5 PM

June 2016

## Art Natters: Members News

### Scam Alert!

Geynn Walder Di Pilla sent this to [info@sketchclub.org](mailto:info@sketchclub.org).

I wanted to warn other artists about a scam that someone tried on me. I was contacted over a month ago by a lady who said she wanted to know if two pieces on my website were still for sale. I replied that they were and asked if she wanted to know anything else about them. She said she wanted to review the exact size, medium, and inspiration for them. About a week later, she said that she would like to proceed with purchasing them. She said that she was traveling, but would tell her husband to send me a check. In about another week, I received another email from her saying the check was in the mail and would arrive that day - she provided tracking information. I did get it. The check was for \$4,250, but it was supposed to be for \$2,500. I contacted her again and told her of the mistake. She said that she hadn't been clear enough with her husband and his assistant had made a mistake. She instructed me to deposit it and return the difference when I mailed the artwork out.

I went to the bank right away to deposit it. I asked the teller how long it would take to clear. She replied a day to a few days and then began to look at the check carefully. She ran it through the system, which indicated there was a high probability that it would not clear. She said that if I did try to deposit it and it didn't clear that not only would I be charged a fee, but this person could get access to my banking information. Rather than deposit it, I sent an email to the woman hoping it was still just a mistake. She never replied. I took all the evidence to the police station the other day.



Gallery hours: Wednesday, Friday, Saturday, Sunday: 1 PM to 5 PM

June 2016

## Art Natters: Members News

**Antonietta Kies** and **Peter Halsey** are both recent graduates of the Pennsylvania Academy of the Fine Arts. They will be having a two-person show in July, in Red Bank, NJ.

# NIGHT IS FLYING

Opening reception  
7.2.2016 | 5-8pm



Peter Halsey



Antonietta Kies

6.30 .2016 - 7.20.2016

The Art Alliance of Monmouth 33 Monmouth St. Red Bank, NJ 07701

Gallery hours: Wednesday, Friday, Saturday, Sunday: 1 PM to 5 PM

June 2016

## Art Natters: Members News

**Brenda L Bechtel** is thrilled to report Executive Director, Shirley Hutchins and the Board of Directors of the Bennington Center for the Arts, VT have included "Masonic Temple ~ Philadelphia" Oil on Linen in the 2016 Small Works Exhibition, May 7 - December 18, 2016.

Academic Artists Association 66th Annual National Exhibition of Traditional Realism includes "Lacework on Montague" Transparent Watercolour, Juried by Douglas Gillette and Dan Riccio, May 4 - 20, 2016. Juror Hayoon Jay Lee has selected for inclusion "Blue Skies Smiling at Me" Oil on Linen in the National Art League 86th Annual Juried Exhibition on Exhibit May 4 - 20, 2016.

Newburyport Art Association is hosting its 19th Regional Juried Exhibition May 6 - June 4, 2016 and includes "Tea with H. F. at Three ~ Winterthur" Oil on Linen.

The 115th New Haven Paint and Clay Club hosted by the Creative Arts Workshop of New Haven, CT, Juried by Barkley Hendricks includes "Fog Descends in an Amber Fugue", Transparent Watercolour, May 13 June 10, 2016, Opening reception with awards May 13, 5 - 7pm.



Masonic Temple ~ Philadelphia



Red Lily Pond ~ Turtle Soup

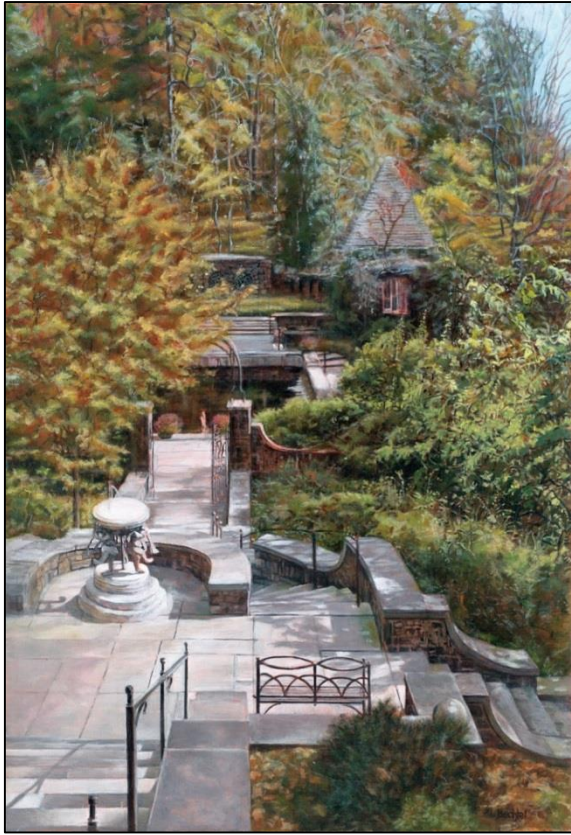
Good times will be had by all during the Opening Awards Reception April 22, 6:30 - 9pm at the Front Street Art Gallery, MA which will be on view through May 1 in Scituate, MA. The Jurors, Becky Haletky, Nancy Colella and Vcevy Strekalovsky have awarded "Red Lily Pond ~ Turtle Soup" Oil on Linen, Third Place Oil/Acrylic. "Blue Skies Smiling at Me" Oil on Linen is currently included at PSC's 153rd Small Oils Exhibition.

To learn more [www.Angelfire.com/Art2/Brookside](http://www.Angelfire.com/Art2/Brookside)



Gallery hours: Wednesday, Friday, Saturday, Sunday: 1 PM to 5 PM

June 2016



Tea with H. F. at Three

Exhibition continues through June 4 and includes "Tea with H. F. at Three ~ Winterthur" Oil on Linen.

Bennington Center for the Arts includes "Masonic Temple ~ Philadelphia" Oil on Linen in the "2016 Small Works Juried Exhibition" through December 18.

To learn more [www.Angelfire.com/Art2/Brookside](http://www.Angelfire.com/Art2/Brookside)

**Brenda L Bechtel** extends gratitude to Juror and Awards Judge Hayoon Jay Lee for recognizing "Blue Skies Smiling at Me" Oil on Linen with the Jack Richeson & Co Ltd Award in the "National Art League 86th Annual Juried Exhibition" on view in the expansive through June 4.

The Creative Arts Workshop, America's largest Community Art Center is hosting the New Haven Paint & Clay Club 115th Juried Exhibition. Renowned Contemporary Artist, Barkley Hendricks has awarded "Fog Descends in an Amber Fugue" Transparent Watercolour with the Whitney Center Award. The exhibit continues through June 10.

Cape Cod Art Association "All Cape Cod National Juried Exhibition" features Art inspired by...You guessed it, Cape Cod and includes "Woodend Light ~ Provincetown" Transparent Watercolour, through June 13.

Newburyport Art Association 19th Northeast Juried



Ladybug Picnic Chanticleer

Gallery hours: Wednesday, Friday, Saturday, Sunday: 1 PM to 5 PM

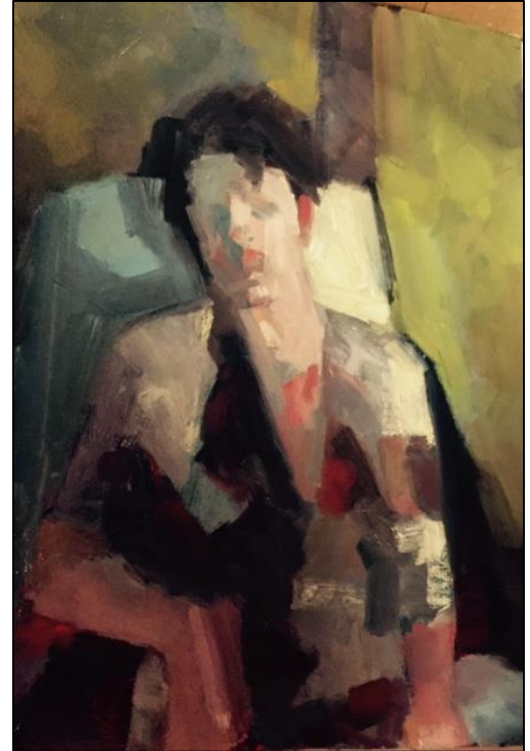
June 2016

## Art Natters: Members News

**Doris Peltzman** has a solo exhibit at the Waverly Gallery in Waverly Heights, Gladwyne, p.a. A total of 51 paintings are exhibited. The theme: Flowers & Friends of Flowers: Then & Now. The exhibit will continue

until late June. Call for appointment

She also has 3 figure paintings on exhibit at 28th. East5 Gallery in Burlington, N.J. representing the Willingboro Art Alliance Human Figure Exhibit. Doris is represented by this gallery and several other works are on display.



Samatha

ain Line Art Center in Haverford, P.A. has 2 of her paintings on exhibit. One has been sold at the time of this writing.



Wedding Flowers

**Idaherma Williams'** woodblock print "Cabin by The Sea" won the Dorothy Wackerman Hutton Prize in 104<sup>th</sup> Annual Medals Exhibition at the Philadelphia Plastic Club



Gallery hours: Wednesday, Friday, Saturday, Sunday: 1 PM to 5 PM

June 2016

## Art Natters: Members News



**Wicked Evening**

**Michael Budden** had a successful exhibition of his urban paintings at the Hughes Gallery, Boca Grande, Fla. His artwork has garnered 11 recent awards in major shows.

He will be participating in the upcoming Bucks County Plein Air Festival in June and is having a show of his urban paintings at the Travis Gallery in New Hope in Oct, 2016.

Information on his artwork and upcoming exhibitions can be found at [mikebudden.com](http://mikebudden.com)

Pic included is award winning painting "Wicked Evening, Times Square" at the 2015 Audubon Artists Exhibition in NYC

Gallery hours: Wednesday, Friday, Saturday, Sunday: 1 PM to 5 PM

June 2016

## Art Natters: Members News



Alice Chung "Yosemite" - Lithography

**Alice Chung** received Best in Graphic Award with lithography title of "Yosemite" from Greater Norristown Art League 2016 Spring open Juried Show.

She graduated from PAFA and worked as a board member for Sketch Club 2014, 2015.

She had a solo show 7 times in USA and Korea.

Her work is between semi abstract to abstract, sometimes representational work with oil, acrylic, watercolor and print.

Numerous award from many juried show at art club include 2nd place of Art of Flower show at Philadelphia Sketch Club 2014

Gallery hours: Wednesday, Friday, Saturday, Sunday: 1 PM to 5 PM

June 2016

## Art Natters: Members News

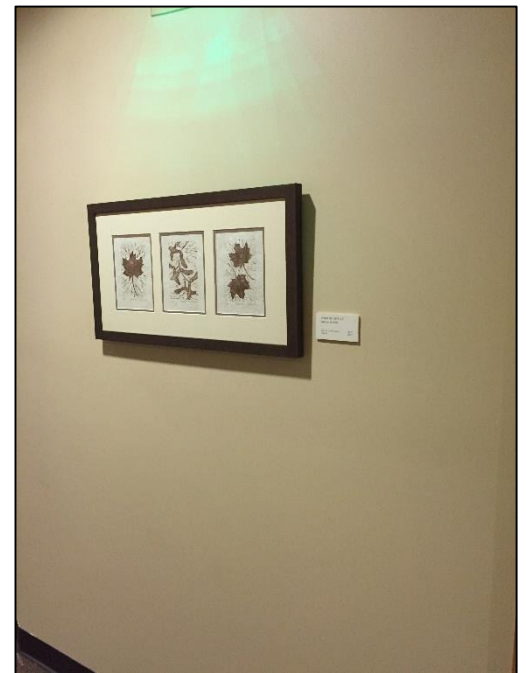
**Nancy H. Mills** is a Doylestown based artist and writer, with strong ties to Philadelphia and the Central Adirondacks. Her work has been exhibited and won awards in shows throughout the Northeast.

Her current exhibition, "Beyond Branches," at View in Old Forge, New York, is a series of linocuts and collagraphs of leaves and seed pods. The opening reception is May 7, from 5 to 7 PM. The work will be on display from March 26 until July 16, 2026.



Additionally, Ms. Mills will be exhibiting a piece in the Central Adirondack Show, also opening May 7.

For more information see the art center website: [viewarts.org](http://viewarts.org)



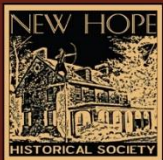


Gallery hours: Wednesday, Friday, Saturday, Sunday: 1 PM to 5 PM

June 2016

## Art Natters: Members News

**Nancy Mills** won a Second Place - Drawing for her self-portrait in the Central Adirondack Show at View in Old Forge, NY. The show will close on June 11. Additionally, at View, her linocuts and collagraphs in the show, "Beyond Branches," will continue until July 16.



NEW HOPE HISTORICAL SOCIETY  
PRESENTS

### *"Artists Alive"*



"New Hope Falls" by Jean Childs Burgo

**Celebrating, Honoring and Supporting  
Living Artists**

**September 9, 10, 11, 2016**  
New Hope Arts

2 Stockton Ave, New Hope, PA 18938

**Opening Reception Friday, September 9, 6-9 pm**

Judges: Dot Bunn, Tamara Cannon, Lisa Tremper Hanover

**For Information e-mail [artentry@comcast.net](mailto:artentry@comcast.net)**

This is a juried show. The show will introduce artists to art collectors. The 25 best paintings will receive The Benjamin Parry Medal of Recognition. Benjamin Parry was the father of New Hope. One of the Parry sons was an artist who belonged to Philadelphia Sketch Club. The Parrys lived both in New Hope and Philadelphia. New Hope Historical Society has a long history of supporting the arts, with members like Redfield and Garber. The home of NHHS is The Parry Mansion in New Hope



Gallery hours: Wednesday, Friday, Saturday, Sunday: 1 PM to 5 PM

June 2016

## Art Natters: Members News

**Susan Barnes** has three painting included in Jersey Shore Publications' new book: **To the Shore Once More, Volume III** available everywhere in May 2016.

*A Jersey Shore  
Dream...*

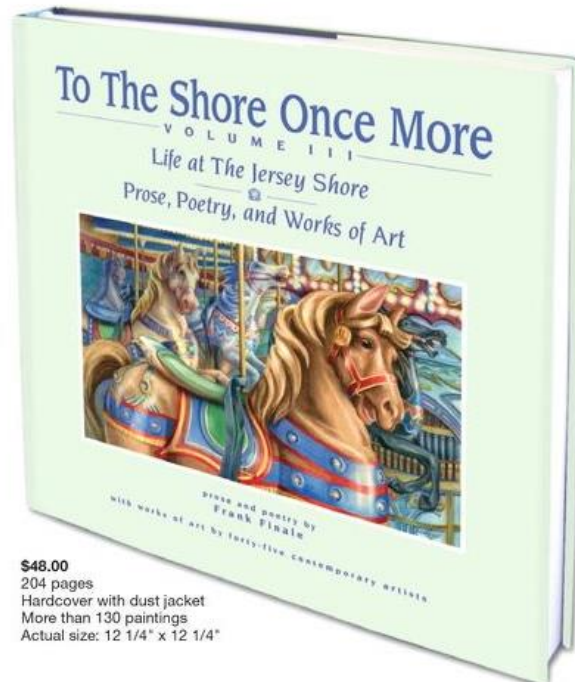
### To The Shore Once More, Volume III

— Life at The Jersey Shore —

Prose, Poetry, and Works of Art

Prose and Poetry by Frank Finale

Works of Art by 45 Contemporary Artists



**\$48.00**  
204 pages  
Hardcover with dust jacket  
More than 130 paintings  
Actual size: 12 1/4" x 12 1/4"

Jersey Shore Publications is pleased to bring you "To The Shore Once More, Volume III," the third and final volume in Frank Finale's bestselling series of coffee table books about the Jersey Shore.

Join once more acclaimed author and poet Frank Finale as he captures "Life at the Jersey Shore" while exploring universal themes that touch us all. This oversized volume contains more than 130 resplendent paintings by more forty-five contemporary artists and features some of the loveliest landmarks and locations at the Shore.

Frank and the artists take readers on a journey through the

past and present, from Sandy Hook to Long Beach Island, and these graceful personal essays, poems, and paintings will elicit an emotional response and lingering memory. The book is divided into four chapters by season and takes place in many of the towns and regions along the coast.

This companion volume is one of the most enchanting and beautiful books about the Jersey Shore ever published and will make a great gift for special occasions and holidays. It will bring you closer to the places you love at the Shore and is sure to bring many days of reading and viewing pleasure—you, your family, and friends will treasure it for years to come.

On sale everywhere May 2016.

Pre-order first editions online at [www.jerseyshorevacation.com](http://www.jerseyshorevacation.com)  
or call 888-22-SHORE.

Gallery hours: Wednesday, Friday, Saturday, Sunday: 1 PM to 5 PM

June 2016

## Art Natters: Members News

Artist **Susan A. Esbensen** has two works on display at Bucks the Gallery at Lower Bucks Campus "WaterWorks" Exhibition. "Surf's Up," and "Hey, Wait Up," were accepted for this non-juried exhibition.



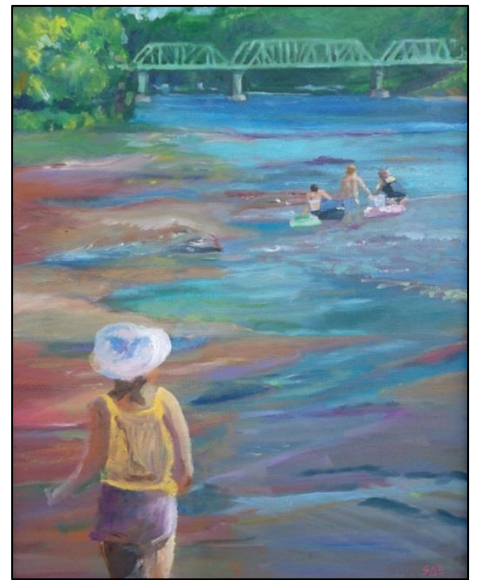
Figure 1 Surf's Up

The theme of this exhibition focuses on works related to and associated with water.

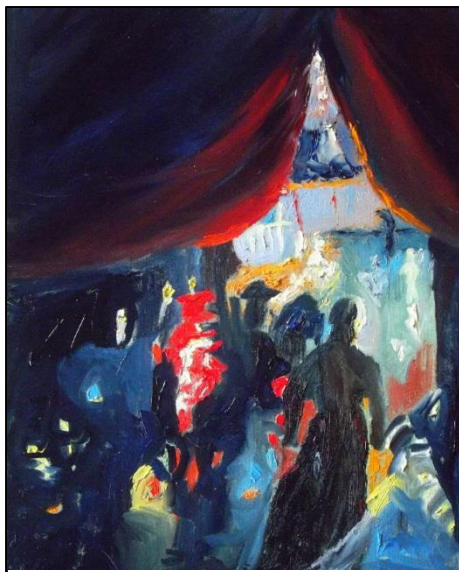
Opening reception was held Friday, April 8th from 6PM to 8:30 PM.

Gallery "finale" open house reception, Saturday, May 14th from 11AM – 2PM.

The commissions from all sales to be applied to the BCCC scholarship fund for the benefit of the Lower Bucks Campus.



Hey, Wait Up



Panem Et Circenses

"Panem Et Circenses," an oil painting by **Susan A. Esbensen** was juried into the Ellarslie Open 33 by juror Ross Lance Mitchell. He is the Director of Barnes-de Mazia Education and Outreach Programs for the Barnes Foundation in Philadelphia. 236 artists submitted 472 works. The exhibition will display approximately 180 works.

Ellarslie Open 33 juried exhibit at the Trenton City Museum, Cadwalader Park, will be on display May 7, 2016- June 26, 2016. Opening Reception, VIP Night May 6, 2016, 6-8 pm, \$10, \$15 at the door. Public Reception, May 7, 2016, 6-9 pm.

Gallery hours: Wednesday, Friday, Saturday, Sunday: 1 PM to 5 PM

June 2016

## Art Natters: Members News

Caffe Galleria announces its latest art installation, "Pigments of My Imagination," will open on Tuesday, May 24. "Pigments of My Imagination" features original work by **Susan A. Esbensen**.



**Crossing Over**



**Wiley Fox**

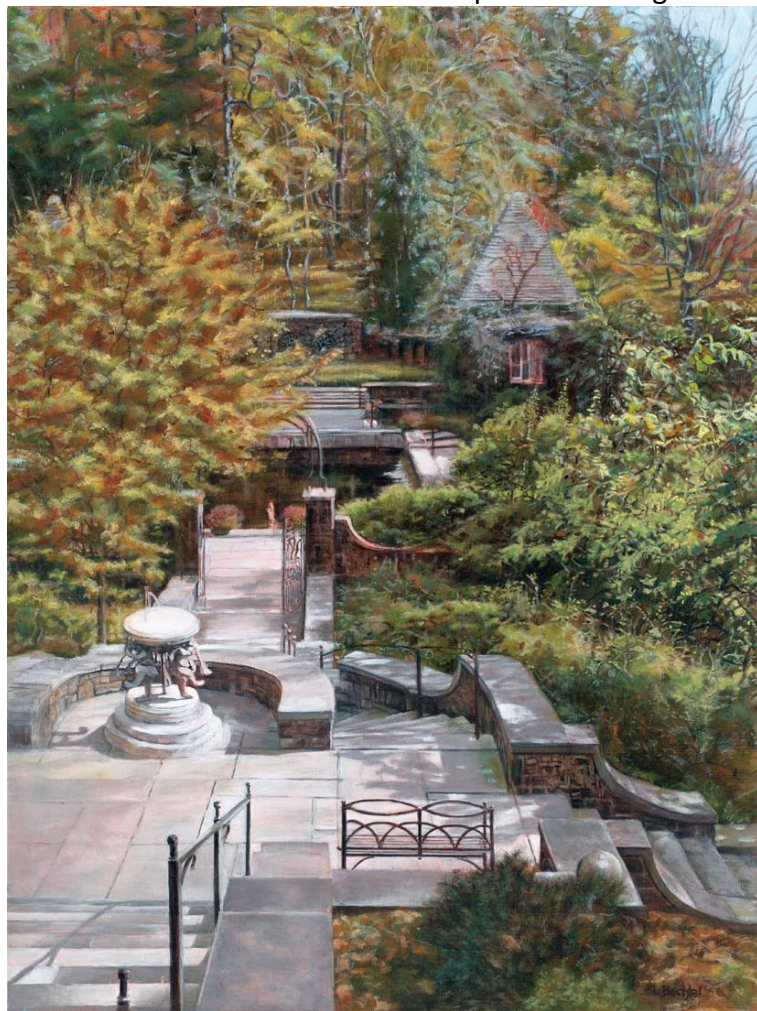
Caffe Galleria and River Queen Artisans Gallery will host an opening reception for "Pigments of My Imagination," at Cafe Galleria, Tuesday, May 24, from 6-8 p.m.



Gallery hours: Wednesday, Friday, Saturday, Sunday: 1 PM to 5 PM

June 2016

**Brenda L Bechtel** extends gratitude to Juror and Awards Judge Hayoon Jay Lee for recognizing "Blue Skies Smiling at Me" Oil on Linen with the Jack Richeson & Co Ltd Award in the "National Art League 86th Annual Juried Exhibition" on view in the expansive through June 4.



Tea with H. F. at Three

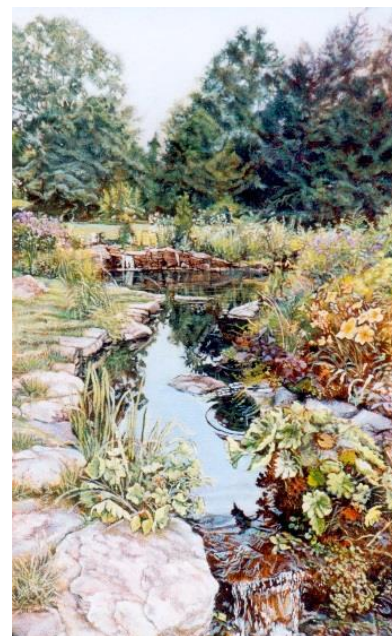
[www.Angelfire.com/Art2/Brookside](http://www.Angelfire.com/Art2/Brookside)

The Creative Arts Workshop, America's largest Community Art Center is hosting the New Haven Paint & Clay Club 115th Juried Exhibition. Renowned Contemporary Artist, Barkley Hendricks has awarded "Fog Descends in an Amber Fugue" Transparent Watercolour with the Whitney Center Award. The exhibit continues through June 10.

Cape Cod Art Association "All Cape Cod National Juried Exhibition" features Art inspired by...You guessed it, Cape Cod and includes "Woodend Light ~ Provincetown" Transparent Watercolour, through June 13.

Newburyport Art Association 19th Northeast Juried Exhibition continues through June 4 and includes "Tea with H. F. at Three ~ Winterthur" Oil on Linen.

Bennington Center for the Arts includes "Masonic Temple ~ Philadelphia" Oil on Linen in the "2016 Small Works Juried Exhibition" through December 18. To learn more



Ladybug Picnic ~ Chanticleer



Gallery hours: Wednesday, Friday, Saturday, Sunday: 1 PM to 5 PM

June 2016

## Art Natters: Members News

**Michael G. Jerista**, long time member of the PSC was honored to have his abstract painting, Fossil Influence VI, juried into the International society of experimental painters 25th annual juried international art show.

Exhibiting at the banana factory in Bethlehem

Pa, from June 3rd to early August 2016.

The show hosts experimental painters from across the globe.

Michael will be honored to pass on the incredible history of the PSC to fellow experimental artists.

Fossil Influence VI.

Done in the experimental method.

Mixed media of liquid acrylics, acrylics, water color, and craypauge, on Arches 400 lb. Paper.

Size framed - 33"W x 24"H May 2015



**Larry Francis** Show at the Gross McCleaf Gallery, "Daylight Harmony", June 1- June 30, 2016. Opening Reception: June 3, 5-7 PM. Gross McCleaf Gallery is located at 127 S. Sixteenth Street, Philadelphia, Pa. 19102.



Gallery hours: Wednesday, Friday, Saturday, Sunday: 1 PM to 5 PM

June 2016

## Art Natters: Members News

**Ruth K. Fackenthal** received and has completed a prestigious commission to paint a portrait of The Baldwin School's retiring Heads of School, Sally Powell. Located in Bryn Mawr, Pa. Baldwin School has been a leading, academic independent school for girls since 1888. Ruth was Head of the Art Department and teacher of Painting and Art History in Baldwin's Upper School for almost four decades. Her interest in human nature informed her teaching as well as her portrait painting. The portrait of Sally Powell will hang in the Main Hall of the school alongside another portrait of a retiring Head of School that Ruth painted in 1980.

**Lois Schlachter** is exhibiting at the Art Association of Harrisburg's 88th Annual International Juried Exhibition, Art of the State: Pennsylvania 2016 at the State Museum of Pennsylvania, Lehigh Art Alliance Juried Art Exhibition at the Bethlehem Rotunda.

Lois also has work at The Art on the Avenue of the States, Harrah's Casino Gallery in Chester and recently exhibited at The Philadelphia Sketch Club, The Plastic Club, Banana Factory, Dupree Gallery, Jed Williams Gallery and Berks Art Alliance.

Lois has participated in shows sponsored by North Penn Art Alliance, Perkiomen Valley Art Center, Greater Norristown Art League, Regional Center for Women in the Arts and The Beauty Gallery.

To see more of Lois' work visit Profiles in Chestnut Hill and Off the Wall Gallery and Framing in Skippack or view her work at [www.fineartbylois.com](http://www.fineartbylois.com)

For the second year in a row, Sketch Club Member and Thurs. workshop monitor **Robert Bohne** was one of 32 artists chosen nationwide to participate in the Wayne Plein Air Festival.

Bohne was awarded the Blick Art Award for his charcoal drawing of the "Berkley V Farm".

**Ben Cohen** was awarded HONORABLE MENTION at the Croft Farms Art Blooms Show  
May 14 to 25 Cherry Hill NJ

Gallery hours: Wednesday, Friday, Saturday, Sunday: 1 PM to 5 PM

June 2016

## Calls for Work and Notices

### Call to ARTISTS

Call to Artists:

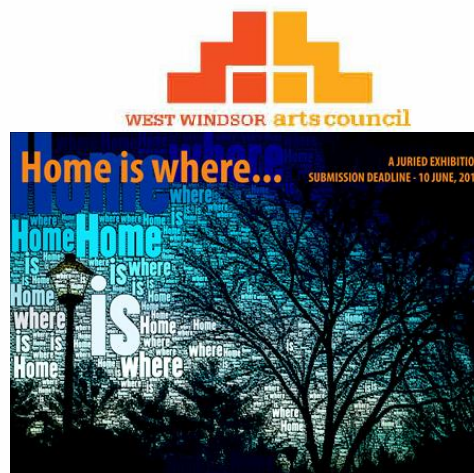
HOME IS WHERE...

Submission deadline: June 10, 2016, EST midnight.

Exhibit Dates: July 11 – Sept 10, 2016

Opening Reception: July 17, 4-6pm.

Artist Talk and Interactive Event: Aug 20, 2016.



West Windsor Art Center, located in Princeton NJ, in the beautiful historic Princeton Junction Firehouse is pleased to offer artists the opportunity to submit work for the juried exhibition “**Home Is Where...**”, opening on July 11, 2016. The focus of the exhibition is to present a visual expression of the artists’ concept of home, which could be anything from a physical space to an abstract emotion. It hopes to broaden the perception of what one considers home, by featuring artists’ diverse interpretations on the subject. Works featured will present a thought-provoking, transformational, joyful or perhaps melancholy exploration of a subject that dominates the human psyche, opening ourselves to the diversity of “home”, and possibly leading us to discover something unexpected that we have in common.

**JUROR:** Dejáy B. Duckett, Associate Director and Associate Curator of the Arthur Ross Gallery, University of Pennsylvania.

**SUBMISSION FEES:** \$25.00 for a maximum of 3 artworks. Fees must be paid at the time of submission.

**PROSPECTUS:** <https://www.westwindsorartscenter.org/wwac-2016-Home-is-where-exhibit-prospectus.html>

Contact:

West Windsor Arts Center, 952 Alexander Road, Princeton Junction, NJ 08550

Phone: 609-716-1931

Email: [wwacexhibits@gmail.com](mailto:wwacexhibits@gmail.com).

Website: <http://www.westwindsorarts.org>

Gallery Hours: Monday-Friday, 10am-6pm and Saturday: 10am - 4pm.

PROSPECTUS: <https://www.westwindsorartscenter.org/wwac-2016-Home-is-where-exhibit-prospectus.html>



Gallery hours: Wednesday, Friday, Saturday, Sunday: 1 PM to 5 PM

June 2016

## Calls for Work and Notices

### Portfolio Headline Art

Sketch Club members can submit images for the Portfolio headline image. We encourage our members to take advantage of this exciting opportunity to display the dynamic vitality of their talent in this challenging format.

For more details about image and file specifications, go to: <http://sketchclub.org/psc-members-call-portfolio-headline-art/>

This month, we thank **Robin Crowley** for submitting her piece “Infinity Pool Puerto Rico”.

I am a pastel artist from Doylestown, PA with a BFA from Syracuse University. I am fortunate to live on beautiful Lake Galena in Bucks County which is a constant source of artistic inspiration for me: water, reflections, people, birds, boats, clouds. The human figure in various places and activities are also fun for me to observe and try to capture on paper. I exhibit and sell at many of our local juried art shows and am very pleased to have received numerous awards for my work.

I am currently a member of the Philadelphia Sketch Club, Doylestown Art League and New Hope Arts Center. Samples of my work may be seen at: [www.flickr.com/photos/rcrowley31](http://www.flickr.com/photos/rcrowley31)

Gallery hours: Wednesday, Friday, Saturday, Sunday: 1 PM to 5 PM

June 2016

## Calls for Work and Notices

### 7th Annual New Hope Art League Juried Art Show top award winners to Rich Timmons Gallery

The top three award winners from the 7th Annual New Hope Art League Juried Art Show, just held May 20-22, are now on display at the Rich Timmons Fine Art Gallery, 795 Rt. 202, Doylestown, PA now through June 30 Ken Karlic won Best in Show for his watercolor "Windows and a Door." Georganna Lenssen won Second Place for her oil on board, "Vacant" and Thomas Whistance was awarded third for his padauk wood sculpture "Desert Flower."

A portion of the proceeds from the juried show go towards the New Hope Art League's art scholarship that awards an area high school student pursuing a fine art degree in college.

For more information, see <http://newhopeartleague.com/>



Desert Flower, Padauk

Gallery hours: Wednesday, Friday, Saturday, Sunday: 1 PM to 5 PM

June 2016

## Calls for Work and Notices

**Closes June 11**



**Paint Out in Historic Pennsylvania's Bucks County**

There's a plein air event in the footsteps of history, a place where Indians met on council rocks, farm houses were built from fields of stone and a river was crossed to give birth to a new nation.

Plan to attend the 1<sup>st</sup> Annual Bucks County Plein Air Festival, to be held June 6 – June 11.

ENTER by **March 23<sup>rd</sup>**, ~~READ MORE~~ (link to prospectus)

So come ye all to paint history, to have fun, to win (\$15,000 prizes), to support the arts in Bucks County!



Painting "June" courtesy of Alan Fetterman



Gallery hours: Wednesday, Friday, Saturday, Sunday: 1 PM to 5 PM

June 2016

## Calls for Work and Notices

### Academy House Exhibition Opportunity

The Academy House art committee is now looking for pieces to display in our lobby starting sometime in April.

If any of your artists at the Philadelphia Sketch Club are interested, ask them to stop into the lobby (which now can be accessed only through 251 S. 15th Street) and look at the spaces currently being used. (The two pieces on the lobby level are smaller than we would prefer; the piece on the landing is an appropriate size.) If they think they have work that would be suitable for us, ask them to send photos and dimensions and we will take them up for consideration. Pieces displayed can be for sale, though the condo asks 20% of the selling price.

Photos can be emailed to this address or dropped off at the front desk with my name on the envelope.

Thanks,

Michael Goldman

[academyhousearts@gmail.com](mailto:academyhousearts@gmail.com)

1425 Locust Street

Philadelphia, PA 19102

## Member Classifieds

### Photography Services for Artists

Do you need high-quality digital images of your work? Is glare a problem? Color balance not quite right? I can help you get great images of your 2-D or 3-D work suitable for digital file output or output for presentation and hard-copy presentation. I offer flexible availability, willingness to travel, special pricing for Sketch Club members. Contact: Ken Weiner

[note2kenweiner@verizon.net](mailto:note2kenweiner@verizon.net);

215-280-6325.

Gallery hours: Wednesday, Friday, Saturday, Sunday: 1 PM to 5 PM

June 2016

## Sketch Club Open Workshop Schedule

All workshops are open to the public. There is no need to register before attending. You do NOT have to be a member of the Philadelphia Sketch Club to participate in the workshops. Our workshops are open to anyone who is interested in drawing, painting or printmaking. All skill levels are welcome. Fees: Model workshops: \$8/session members, \$9/session for non-PSC members; Printmaking workshop: \$10/session; All workshops \$6 for full-time students.

Life Model	Costumed Model	Printmaking
<p>Mondays – Extended pose (multi-session): 6:30 PM-9:30PM</p> <p>Monitors: Robert Bohne, Vince Docktor, Dan Kuetemeyer</p> <p>Tuesdays – Extended pose: 12:00 PM to 3:00 PM Monitor: Jacqueline Barnett</p> <p>Wednesdays – Extended pose: 6:30 to 9:30 PM Monitor: Vince Docktor</p> <p>Saturdays – Extended pose: 9:30 AM to 12:30 PM Monitor: Vince Docktor</p>	<p>Thursdays</p> <p>Extended pose</p> <p>12:00 PM to 3:00 PM Monitor: Bob Bohne.</p>	<p>Tuesdays</p> <p>10:00 AM to 2:00 PM Monitor: Elizabeth H. MacDonald</p>
<p><b>Please Note: Those who use oil paints should bring their own container(s) to remove used solvents. Odorless solvents only.</b></p>		

Gallery hours: Wednesday, Friday, Saturday, Sunday: 1 PM to 5 PM

June 2016

## Call for Volunteers



We have important positions within the PSC that need volunteers to take over! Contact Faad Ghoraishi at to help out your club with future events.

The Portfolio: The newsletter of the Philadelphia Sketch Club is published monthly. Editor: Ken Weiner;

Technical support and Web Master: Ken Weiner

Send your member news, announcements and corrections to [portfolio@sketchclub.org](mailto:portfolio@sketchclub.org). The due date for all materials is one week before the end of the month.

Back issues of the Portfolio are available at: <http://sketchclub.org/portfolio-archive/>

### The Philadelphia Sketch Club

235 S Camac Street  
Philadelphia, PA 19107  
(215) 545-9298  
<http://sketchclub.org/>  
[executivedirector@sketchclub.org](mailto:executivedirector@sketchclub.org)

Gallery Manager: Michelle Lockamy

#### Officers:

- President: Richard Harrington
- Vice President: Kenneth Weiner
- Secretary: Fran Carter
- Treasurer: William Patterson

#### Board of Directors

- Vincent Docktor
- Melanie Dion
- Stephen Iwanczuk
- William Kosman
- Kevin Myers
- Nancy H. Mills
- Brian Siegel
- Charles F. Tarr
- Joe Winter