

Gallery hours: Wednesday, Friday, Saturday, Sunday: 1 PM to 5 PM

July 2016



Michelle Lockamy: Independence Day

## This Month's Portfolio

Support Your Sketch Club: Join, Renew, Donate, Volunteer	2
Membership	4
Sketch Club Activities	5
Dinner Meeting	7
2016 Main Gallery Schedule	8
2016 Annual PSC Workshop Show:	8
2016 Stuart Gallery Schedule	10
Art Natters: Members News	11
Calls for Work and Notices	17
Member Classifieds	19
Sketch Club Open Workshop Schedule	20
Call for Volunteers	21

Send your member news, announcements and corrections to [portfolio@sketchclub.org](mailto:portfolio@sketchclub.org). The deadline for ALL submissions is 1-week before the end of the month.

Reminder: It's never too late. You can always renew your membership

You may pay online at

<http://sketchclub.org/annual-dues-payment/>

or mail your check to:

The Philadelphia Sketch Club

235 S. Camac St.

Philadelphia, PA 19107

For questions please contact the Gallery

Manager at 215-545-9298 or email:

[executivedirector@sketchclub.org](mailto:executivedirector@sketchclub.org)

Late Breaking News – See items that were submitted after the publication date. Go to:

<http://sketchclub.org/late-breaking-news/>

The PSC general email is: [info@sketchclub.org](mailto:info@sketchclub.org)

Gallery hours: Wednesday, Friday, Saturday, Sunday: 1 PM to 5 PM

July 2016

## Support Your Sketch Club: Join, Renew, Donate, Volunteer

### Contribute

Please consider making your tax deductible contribution now. These funds will be put to good use providing enhanced services to our members and friends.

Membership dues cover only a small portion of the PSC's operating expenses. Competition for funding for arts organizations like the Sketch Club is increasingly competitive and total funding for the arts is shrinking. Your additional support will keep the PSC an active support for visual artists in the Metropolitan Philadelphia area.

The Philadelphia Sketch Club is an IRS designated 501(c) (3) non-profit organization which allows your donations to be tax deductible.

You can call the office at 215-545-9298, mail checks to the Sketch Club or visit the Contribute page of our Website to give online at: <http://sketchclub.org/support-us/>

## Support the Sketch Club when you purchase from Amazon, use Amazon Smile

### The Sketch Club's AmazonSmile Link:

<http://smile.amazon.com/gp/charity/homepage.html?orig=%2Fgp%2Fbrowse.html%3Fnode%3D502659011&ein=23-6291644>

Thank you for your participation in the AmazonSmile program.

Purchases made by Sketch Club supporters using AmazonSmile in May resulted in a \$27.15 AmazonSmile contribution to the PSC. It's not much, but every cent helps. So don't forget, use the above link when purchasing from Amazon and increase the PSC's income.

### What is AmazonSmile?

AmazonSmile is a simple and automatic way for you to support your favorite charitable organization every time you shop, at no cost to you. When you shop at smile.amazon.com, you'll find the exact same low prices, vast selection and convenient shopping experience as Amazon.com, with the added bonus that Amazon will donate a portion of the purchase price to your favorite charitable organization. You can choose from nearly one million organizations to support.

To learn more about AmazonSmile go to: <http://smile.amazon.com/gp/aw/ch/about>

Gallery hours: Wednesday, Friday, Saturday, Sunday: 1 PM to 5 PM

July 2016

## Support Your Sketch Club: Join, Renew, Donate, Volunteer

### Volunenteer **Still** Needed

Chuck Tarr has been managing the arrangements for the Monthly Member Dinners. He has been doing a magnificent job of arranging the menus and logistics for more than a year. Chuck is also the House Manager, a job that is extremely demanding and time consuming. In order to devote his full attention to the House Manager responsibilities, Chuck will no longer be able to manage the dinners.

We are now seeking a PSC member with great organizational skills to assist in managing the Member Dinner arrangements. If you want to get involved in this important PSC activity, please contact us ACAP at: [executivedirector@sketchclub.org](mailto:executivedirector@sketchclub.org)

### Like, Link & Share

If you're not following the Philadelphia Sketch Club on Facebook re-tweeting Sketch Club tweets yet, it's time that you did. We have well over 1700 followers. Get the word out about the Sketch Club. Please click the like button and share your comments and invite your friends to like our page.

Follow @PhilaSketchClub on Twitter, we have almost 400 followers. Please click the heart button and re-tweet our announcements.

Include links on your website, blogs and social media to The Philadelphia Sketch Club to increase traction across social media platforms.

Follow us on Facebook Twitter now!

Thanks to Don Brewer for managing PSC social media sites.



Gallery hours: Wednesday, Friday, Saturday, Sunday: 1 PM to 5 PM

July 2016

## Membership

### Become a Member of the Philadelphia Sketch Club!

If you're reading this edition of the Portfolio and you're not a member of the PSC, you should consider joining the more than 200 other Philadelphia area artists who have. The PSC is one of the most active visual art venues serving center city Philadelphia. The PSC is a hands-on organization that offers its members the opportunity to participate in all aspects of creating and presenting work to the public. It presents over 20 scheduled group and solo exhibitions annually and offers a wide range of daily workshops. [Get info and an application here.](#)

If you are a member of the PSC, please feel free to share the Portfolio with your artist friends and encourage them to become members.

### Membership Renewal

You can check the status of your membership by going to the Current Members page on the PSC web-site: <http://sketchclub.org/sample-page/memberspace/>. All current members are listed. An asterisk (\*) means that the membership has expired but is within the 60-day grace period for renewal. Names in red are active links to the individual's web site.

Renew Now! <http://sketchclub.org/annual-dues-payment/>

If you have any questions about your membership, please don't hesitate contact us at [membership@sketchclub.org](mailto:membership@sketchclub.org) or call the office: 215-545-9298.

### New Members this Month

The Sketch Club welcomes a new member recently approved by the Board of Directors.

- Barbara Hibben

Current Sketch Club members can review new member applications at: <http://sketchclub.org/member-applications/>. The members only section and documents are password protected. If you've forgotten the password, please contact Ken Weiner at: [membership@sketchclub.org](mailto:membership@sketchclub.org).



Gallery hours: Wednesday, Friday, Saturday, Sunday: 1 PM to 5 PM

July 2016

## Sketch Club Activities

It's never too early to plan to attend the Sketch Club's 2016 Gala



**SAVE the DATE**  
**SATURDAY**  
**OCTOBER 15TH, 2016**

The 156th Anniversary Gala  
at the Philadelphia Sketch Club  
Honoring Jan Baltzell,  
Eileen Goodman and Cindi Ettinger

**Come Join Us**

## SAVE the DATE

The Philadelphia  
Sketch Club's  
156th Anniversary  
Gala

**SATURDAY**  
**October 15th, 2016**  
**6 to 10 PM**

Honoring Jan Baltzell,  
Eileen Goodman  
and Cindi Ettinger



Medal Presentation, Live Art Auction,  
Silent Auction, Cocktails, Buffet  
for more information and to buy tickets  
visit [www.sketchclub.org](http://www.sketchclub.org) or call 215-545-9298

Critique Night: Suspended for July and August

**Next Meeting September 21<sup>st</sup>, 2016**

**Open to PSC Members and Non-Members**

Critique Night is held in the Library of the Sketch Club every third Wednesday beginning at 7 PM. Bring work you've finished, work in progress, or just sketches for work you're planning! Photos, digital work, drawings, all mediums are welcome; we can project digital images on a screen for review, so you have the option to show work that may be too big or too heavy to transport to the Club. There is no one individual directing the critique, just your fellow artists and peers



Gallery hours: Wednesday, Friday, Saturday, Sunday: 1 PM to 5 PM

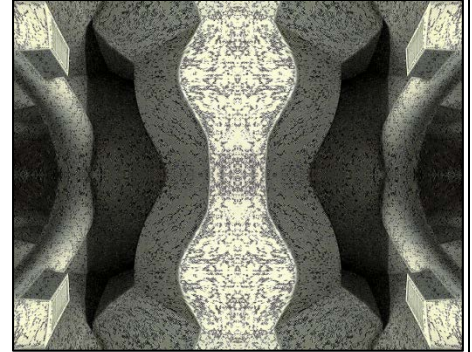
July 2016

## Sketch Club Activities

Philadelphia Sketch Club Photographer's Circle: Suspended for July and August

**Next Meeting: Thursday, September 8th, 2016 from 6:30 to 8:30 PM**

You can contact Steve anytime at [si22@drexel.edu](mailto:si22@drexel.edu) or 215-300-9192 (cell). **Steve Iwanczuk**, Photo Circle Monitor and Member of Philadelphia Sketch Club Board of Directors



## Enjoy the Sketch Club's Garden



The PSC Garden is open all summer during gallery hours. Feel free to spend time in this quiet picturesque environment.

Recently, Chuck Tarr was enjoying a quiet moment and he noticed the first lily blossoms in the garden's pond and he couldn't resist taking this photo.

### Gallery hours:

Wednesday, Friday, Saturday, Sunday: 1 PM to 5 PM

Gallery hours: Wednesday, Friday, Saturday, Sunday: 1 PM to 5 PM

July 2016

## Dinner Meeting

No Dinners July and August.

**Next Members' Dinner Meeting  
September 9th, 2016**

**Guest Speaker to be Announced**

**Chuck Tarr** will be leaving his position as the "PSC dinner coordinator" immediately due to time constraints. He, of course continues as the commendable House Manager of the Philadelphia Sketch Club.

Chuck attended meticulously to every detail of the dinners, from finding the very best caterer for the occasion, to the planning, the place settings and even the vases and flowers that adorned the tables. His attention to cleanliness, which I observed particularly during the pantry reconstruction, was extraordinary.

I believe I speak for the Friday evening dinner attendees when I express our appreciation for his excellence as the dinner coordinator. Thank you, Chuck!

Warm Regards,

Jacqueline Barnett

And the PSC Board can only echo Jackie's sentiments. Thanks to Chuck, for organizing dinners for the over the past year.





Gallery hours: Wednesday, Friday, Saturday, Sunday: 1 PM to 5 PM

July 2016

## 2016 Main Gallery Schedule

**There's still time to see the 2016 PSC Workshop Show. It closes July 8<sup>th</sup>**

### 2016 Annual PSC Workshop Show:

The workshops, facilitated by **Betty McDonald, Vince Docktor, Robert Bohne** and **Jacqueline Barnett** are having their annual Workshop Exhibition in the upstairs gallery from June 17th to July 8th. Many workshop members submitted their drawings, paintings, pastels and watercolors for this show. Admission is free.

The workshops provide a wonderful opportunity to draw from an unclothed or clothed model, to experiment with a variety of media, to work in a welcoming and non-threatening atmosphere, at their own level and pace. Viewing other artists' works encourages growth and knowledge about techniques and styles. There is a whole spectrum of possibilities within each workshop, from a study in basic anatomy, color, form and composition to unique interpretations of the figure and the print. In the print workshop, led by Betty McDonald, in the basement Tuesdays from 10 to 2 many techniques from wood cutting, drypoint etching and monotype are explored.



See the workshop schedule: <http://sketchclub.org/workshops/>

Anyone wishing more information about the workshops or the exhibition may contact <mailto:jbarnett12@verizon.net>. Please include the Workshop Exhibition in the subject area.

Jacqueline Barnett, Chai  
Michelle Lockamy, Co-Chair



Gallery hours: Wednesday, Friday, Saturday, Sunday: 1 PM to 5 PM

July 2016

## 2016 Main Gallery Schedule

### Our Next Exhibiton Opens July 22<sup>nd</sup>

Plan to visit the PSC to see this exciting mid-summer event. Bring your frien+d-s and join us for the reception: Sunday July 31 from 2:00 to 4:00 PM. Awards presented at 3:00 PM.



# PHOTOGRAPHY 2016

## JULY 22 - AUGUST 13

**Reception: Sunday July 31, 2-4pm**

**235 S. Camac St. Philadelphia PA. 19107**  
**215-545-9298**  
**Info@sketchclub.org**

**Gallery Hours: Wed, Fri, Sat, Sun - 1 - 5 pm**



Gallery hours: Wednesday, Friday, Saturday, Sunday: 1 PM to 5 PM

July 2016

## 2016 Stuart Gallery Schedule

July 1 to July 30 - 6<sup>th</sup> PSC Invitational Artist Show

A joint show.

Joseph Opshinsky



Ron Weisberg



**Reception:** Sunday July 31, 2016 from 2 – 4 PM at the PSC

## Exhibition Schedule and Events Calendar Always Available at [sketchclub.org](http://sketchclub.org)

Don't forget, you can always see the schedule for the coming year on the PSC web-site. Go to the Current Exhibits menu and select Exhibition Schedule. Here's the link: <http://sketchclub.org/exhibitions/>. And new for this year, we've added an Events Calendar under the Calendars menu. This calendar will show a complete list of the dates for important activities and deadlines. See it here: <http://sketchclub.org/calendar/>



Gallery hours: Wednesday, Friday, Saturday, Sunday: 1 PM to 5 PM

July 2016

## Art Natters: Members News

### Portfolio Headline Art



Sketch Club members can submit images for the Portfolio headline image. We encourage our members to take advantage of this exciting opportunity to display the dynamic vitality of their talent in this challenging format.

For more details about image and file specifications, go to:

<http://sketchclub.org/psc-members-call-portfolio-headline-art/>

This month, we thank the Sketch Club's Gallery Manager **Michelle Lockamy** for submitting her piece "Independence Day". She studied Illustration and Business at Moore College of Art & Design. As a young business owner, she enjoys the balance between working with her clients and working on her personal storytelling projects. You can learn more about her work at [michellelockamy.com](http://michellelockamy.com).

**Lauren Sweeney** will have 5 watercolor paintings in the Summer Group Show at the Delaware Station Gallery in Wilmington DE. The annual show will begin on Friday July 1 and run through the end of August. Lauren's works include "Butterfly Feasting on a Plum Tree".

The gallery is located on Kennett Pike in Greenville DE, between Wilmington center and Winterthur Gardens. The gallery is open in the summer Mon - Fri 9 to 5. See the gallery's website (<http://www.stationgallery.net>) for more information about the summer show, and some of the works on display.

Lauren will also be participating in the Naudain St. Art Collective's first group show in July. The show will contain works by most of the 11 members, from paintings to weavings to photography. The opening event will be on Saturday July 9 from 11 AM to 7 PM. The show will be at 2503 Naudain St., the Philadelphia studios of group organizer and Sketch Club member Bhavisha Patel.



Butterfly in Plum Tree



Gallery hours: Wednesday, Friday, Saturday, Sunday: 1 PM to 5 PM

July 2016

## Art Natters: Members News

**Ben Cohen** received SECOND PLACE AWARD at the 44th Annual Robert Ransley Open Juried Exhibit - Dr. David Flinker Art Gallery, Virtua Memorial Hospital - Mt. Holly, NJ-- June 5 to 29, 2016

**Susan Barnes** is one of four featured artists in the ezine Monoprint-Monotype-Strappo, Summer 2016, Volume 1 issue3. It is available on [issuu.com](http://issuu.com) or with the Issuu app.

Jersey Shore Publications featured one of her paintings in their 2016 Long Beach Island Vacation Guide.

She had two painting juried into the Burlington County Art Guild's Robert Ransley show which runs through June 30 in the David Flinker Gallery, Virtua Hospital, Mount Holly, NJ.

Rowan College at Burlington County accepted two of her paintings into their 2016 Summer Juried Exhibition which includes work by students, alumnae and community artists. The show runs from June 29 through August 26 with a reception on July 9th from 12 to 2 pm.

PSC President **Richard Harrington** is pleased to announce the opening of "On The Road", a joint show with artist Gail Bracegirdle on Thursday, July 7th, at the Artists' Gallery, 18 Bridge Street, Lambertville, NJ.



Fourth of July

The exhibit, which runs through Sunday, July 31st, features watercolor, acrylic, and oil paintings by the two artists, who were influenced by their road trips and travels through different places like Australia and along old Route 66 in the southwestern US.

A reception with the artists will be held on Saturday, July 17, from 4 to 8 pm.

Additionally, both artists will also be at the Gallery for a closing reception on Sunday, July 31st, 2 to 6 PM. Gail Bracegirdle's work has been included in several

exhibitions at the PSC, and in the past she has served as a Juror for both the Works on Paper and Art of the Flower exhibitions.

Gallery hours: Wednesday, Friday, Saturday, Sunday: 1 PM to 5 PM

July 2016

## Art Natters: Members News



1 "Cry,,,don't cry" Pencil on 8 ply Rising Museum board. 32" x 40"

**Doug Smock's** "Cry...don't cry" was submitted on-line for the Members Show. However, due to a communication problem, Doug was never notified to bring his work to be hung. Here is an image of his work and a little bit about Doug.

Doug Smock studied at the Minneapolis College of Art and Design. For over 25 years he worked as a designer and creative director in the publishing industry. Doug has done numerous magazine illustrations both regionally and nationally for publications as diverse as Playboy and The Atlantic Monthly. He currently teaches Illustration and Drawing at Montgomery County Community College. A limited edition, hand-signed zine called "The pathetic start of it all" showcases Doug's artwork and

is available on his website <http://www.dougsmock.com>. Original artwork is available for purchase, please contact [ds@dougsmock.com](mailto:ds@dougsmock.com).

**Brenda L Bechtel** has her Oil on Linen "Blue Skies Smiling at Me" included in the Salmagundi Club 38th Annual Juried Painting and Sculpture Exhibition for Non-Members, Main Gallery, Salmagundi Club Monday July 18 - Friday July 29, 2016, 47 Fifth Avenue, Manhattan. The awards reception will be held on closing night, Friday July 29, 7 - 9pm. The Club Bar is Open to Exhibiting Artists and their Guests during the run of the Exhibition. Jurors Bao LeDe, Andrew Kusmin and Dan Cutrona have included Brenda's Transparent Watercolour "Memories of Infinitude" in the Cape Cod Art Association 2016 National Juried Exhibition, July 11 through August 21, Awards presented during Opening reception Thursday, July 14, 5 - 7pm.



Memories of Infinitude



Blue Skies Smiling at Me

To learn more

[www.Angelfire.com/Art2/Brookside](http://www.Angelfire.com/Art2/Brookside)

Gallery hours: Wednesday, Friday, Saturday, Sunday: 1 PM to 5 PM

July 2016

**New Hope Historical Society** is proud to announce "Artists Alive" "Artists Alive" honors, supports and publicizes living artists. The best 25 works will receive The Benjamin Parry Medal of recognition. There will be a very special souvenir book/program.

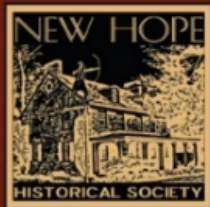
To enter <http://www.newhopehs.org/2016-art-show.html>

For information e-mail Chuck Mintzer [artentry@comcast.net](mailto:artentry@comcast.net)

Deadline for submission is July 20, 2016.

Get the Prospectus:

<http://sketchclub.org/wp-content/uploads/2016/06/AA-Show-Entry.pdf>



NEW HOPE HISTORICAL SOCIETY  
PRESENTS

*"Artists Alive"*



*"New Hope Falls" by Jean Childs Burgo*

**Celebrating, Honoring and Supporting  
Living Artists**

**September 9, 10, 11, 2016**  
**New Hope Arts**

**2 Stockton Ave, New Hope, PA 18938**

**Opening Reception Friday, September 9, 6-9 pm**

*Judges: Dot Bunn, Tamara Cannon, Lisa Tremper Hanover*

**For Information e-mail [artentry@comcast.net](mailto:artentry@comcast.net)**



Gallery hours: Wednesday, Friday, Saturday, Sunday: 1 PM to 5 PM

July 2016

## Art Natters: Members News

**Susan Barnes** has three painting included in Jersey Shore Publications' new book: **To the Shore Once More, Volume III** available everywhere in May 2016.

*A Jersey Shore  
Dream...*

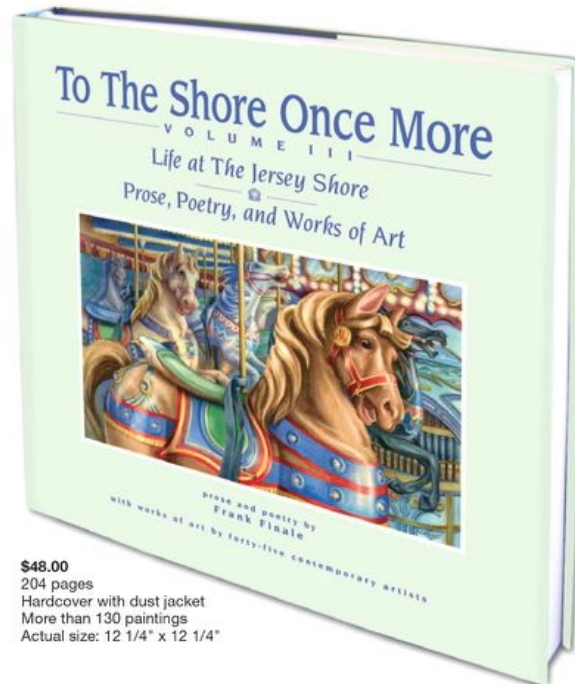
### To The Shore Once More, Volume III

— Life at The Jersey Shore —

Prose, Poetry, and Works of Art

Prose and Poetry by Frank Finale

Works of Art by 45 Contemporary Artists



**\$48.00**  
204 pages  
Hardcover with dust jacket  
More than 130 paintings  
Actual size: 12 1/4" x 12 1/4"

Jersey Shore Publications is pleased to bring you "To The Shore Once More, Volume III," the third and final volume in Frank Finale's bestselling series of coffee table books about the Jersey Shore.

Join once more acclaimed author and poet Frank Finale as he captures "Life at the Jersey Shore" while exploring universal themes that touch us all. This oversized volume contains more than 130 resplendent paintings by more forty-five contemporary artists and features some of the loveliest landmarks and locations at the Shore.

Frank and the artists take readers on a journey through the

past and present, from Sandy Hook to Long Beach Island, and these graceful personal essays, poems, and paintings will elicit an emotional response and lingering memory. The book is divided into four chapters by season and takes place in many of the towns and regions along the coast.

This companion volume is one of the most enchanting and beautiful books about the Jersey Shore ever published and will make a great gift for special occasions and holidays. It will bring you closer to the places you love at the Shore and is sure to bring many days of reading and viewing pleasure—you, your family, and friends will treasure it for years to come.

On sale everywhere May 2016.

Pre-order first editions online at [www.jerseyshorevacation.com](http://www.jerseyshorevacation.com)  
or call 888-22-SHORE.

Gallery hours: Wednesday, Friday, Saturday, Sunday: 1 PM to 5 PM

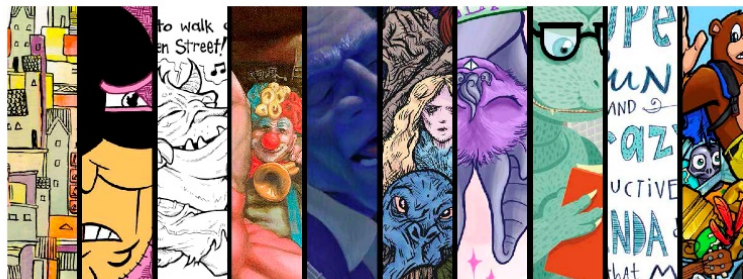
July 2016

## Art Natters: Members News

**Kyle Margiotta** is curating and participating in a gallery exhibit at Millville, NJ's River Renaissance Center for the Arts opening in mid-July.

Visit Kyle at:

<http://km-fineart.com/>



### PCS visits Millville

The Philadelphia Cartoonist Society Art Opening and Exhibition presented by The Riverfront Renaissance Center for the Arts in Millville, NJ from July 15th till August 13th  
Opening Reception Friday, July 15th

A group of Philly Cartoonists are heading to the Garden State.

July - What Philadelphian hasn't braved the traffic, the heat and the Ben Franklin bridge to spend some quality time with our beachfront neighbors? This July the members of the Philadelphia Cartoonists Society (PCS) are doing just that. The PCS is teaming up with the Riverfront Renaissance Center for a group exhibition featuring the work of a dozen cartoonists. Artwork will be ranging in styles from cartoony to decorative and fine art to pen and ink works directly from the comic page. The clients for these selected artists vary from American Greetings, the Cartoon Network and many of the most notable mainstream and independent comic publishers making comics today.

The works are being curated by Kyle Margiotta, a longtime member of the Philadelphia Cartoonist Society. A classically trained fine artist Kyle states that "Being a member of the PCS helps me stretch my legs creatively." Kyle went on to say "We've formed really strong bonds among the group. Assisting each other with everything from critique to helping to find work. Many within the group have been guests to my art and design classes. We were overdue for an exhibition." The show hopes to highlight the popular medium of cartooning and comics as well as maybe re-define what it means to be a cartoonist and artist in this day and age.

Christian "Patch" Patchell, one of the artists contributing to the show and an educator stated "Being in comics doesn't just mean spandex and tights. There's room for every approach in comics and cartooning." Patch continued "Some of the best stuff comes from autobiographic roots. Like all good art, the artist puts a bit of themselves on the page."

About the Riverfront Renaissance Center for the Arts, Millville, New Jersey  
Since April of 2001, the Riverfront Renaissance Center for the Arts (RRCA) has been a non-profit community arts and cultural center in the heart of Millville's Glasstown Arts District. It's mission from day one has been -

"To advance the center as the focal point for cultural, educational, and artistic enrichment and create a sense of community; while positively impacting the economic vitality of the Millville Glasstown Arts District."

### About the Philadelphia Cartoonist Society

The Philadelphia Cartoonist Society (PCS) is a group of Philadelphia artists and cartoonists who work together on group projects, charity work and publications in and around the Philadelphia area.

*More info, images and detailed bios of the contributing artist can be furnished upon request.*

Gallery hours: Wednesday, Friday, Saturday, Sunday: 1 PM to 5 PM

July 2016

## Calls for Work and Notices

### Or Hadash Staircase Gallery

Reconstructionist Congregation Or Hadash in Fort Washington, PA is housed in a historic building, formerly the summer mansion of well-known society families. We have adapted a formerly grand entrance staircase into what we call The Staircase Gallery.

The Staircase Gallery has been having 3 shows a year for over 14 years. We have had shows featuring a diverse group of painters, photographers, children's art, and illustrators. We have incorporated writings and travel logs into exhibits for multi-talented artists who work in multiple mediums.

We are always looking for local artists who would like to show their work. The application process is to simply let us know of your interest, sending us a link to a site where we can see your work. If the Gallery committee feels your work would work in our space, we will contact you to schedule a show. The school students pass through the gallery so we must consider what is appropriate viewing for them in our decision making process. Many artists make a list of prices available for sales. We provide assistance in the hanging of the show and let the artist know what supporting documents are typically displayed.

We are currently scheduling for the 2017 season and going forward. If you would like to have a show in our unique and charming gallery, please let us know at [mikeoswald@comcast.net](mailto:mikeoswald@comcast.net). We will start the process and let you know what the steps are if we go forward.

### Academy House Exhibition Opportunity

The Academy House art committee is now looking for pieces to display in our lobby starting sometime in April.

If any of your artists at the Philadelphia Sketch Club are interested, ask them to stop into the lobby (which now can be accessed only through 251 S. 15th Street) and look at the spaces currently being used. (The two pieces on the lobby level are smaller than we would prefer; the piece on the landing is an appropriate size.) If they think they have work that would be suitable for us, ask them to send photos and dimensions and we will take them up for consideration. Pieces displayed can be for sale, though the condo asks 20% of the selling price.

Photos can be emailed to this address or dropped off at the front desk with my name on the envelope.

Thanks,  
Michael Goldman  
[academyhousearts@gmail.com](mailto:academyhousearts@gmail.com)  
1425 Locust Street  
Philadelphia, PA 19102



Gallery hours: Wednesday, Friday, Saturday, Sunday: 1 PM to 5 PM

July 2016

## Calls for Work and Notices



### Call for Entries

Media Arts Council's  
10th Annual Juried Photography Exhibit

#### 2016 Theme:



Submission Deadline:  
**August 20, 2016**



For more information,  
links to exhibit rules and entry form:  
<http://goo.gl/z5uDw2>



All photographers are invited to enter Media Arts Council's 10th Annual Juried Photography Exhibit, also known as PhotoEx. The theme for 2016: "Contrast — within Media & Delaware County." Photos may depict any subject matter captured in Delaware County, reflecting the theme. Deadline for entries is Saturday August 20, 2016.

"Contrast" is the arrangement of opposite elements (color, texture, shape, size, value, alignment, direction, movement, subject matter, etc.) to create visual interest. This theme invites you to use contrast in your photographic submissions, incorporating your unique creative interpretations.

This year's juror is Keith Sharp, a nationally known photographer whose photos are included in many museum collections, <http://keithsharp.net/>

For more information, including links to exhibit rules and entry form, visit the "

Call for Entries at: <http://mediaartscouncil.org/events/juriedphotography-overview/call-for-entries/>

And be sure to like our Facebook page at: <https://www.facebook.com/Media.ICON.S.Photo.Exhibit>



Gallery hours: Wednesday, Friday, Saturday, Sunday: 1 PM to 5 PM

July 2016

## Member Classifieds

### Photography Services for Artists

Do you need high-quality digital images of your work? Is glare a problem? Color balance not quite right? I can help you get great images of your 2-D or 3-D work suitable for digital file output or output for presentation and hard-copy presentation. I offer flexible availability, willingness to travel, special pricing for Sketch Club members. Contact: Ken Weiner

[note2kenweiner@verizon.net](mailto:note2kenweiner@verizon.net);  
215-280-6325.

Gallery hours: Wednesday, Friday, Saturday, Sunday: 1 PM to 5 PM

July 2016

## Sketch Club Open Workshop Schedule

All workshops are open to the public. There is no need to register before attending. You do NOT have to be a member of the Philadelphia Sketch Club to participate in the workshops. Our workshops are open to anyone who is interested in drawing, painting or printmaking. All skill levels are welcome. Fees: Model workshops: \$8/session members, \$9/session for non-PSC members; Printmaking workshop: \$10/session; All workshops \$6 for full-time students.

## Sketch Club Workshops Cancelled July 2nd and Monday July 4<sup>th</sup> for the Holiday

Life Model	Costumed Model	Printmaking
<p>Mondays – Extended pose (multi-session): 6:30 PM-9:30PM</p> <p>Monitors: Robert Bohne, Vince Docktor, Dan Kuetemeyer</p> <p>Tuesdays – Extended pose: 12:00 PM to 3:00 PM Monitor: Jacqueline Barnett</p> <p>Wednesdays – Extended pose: 6:30 to 9:30 PM Monitor: Vince Docktor</p> <p>Saturdays – Extended pose: 9:30 AM to 12:30 PM Monitor: Vince Docktor</p>	<p>Thursdays</p> <p>Extended pose</p> <p>12:00 PM to 3:00 PM Monitor: Bob Bohne.</p>	<p>Tuesdays</p> <p>10:00 AM to 2:00 PM Monitor: Elizabeth H. MacDonald</p>

**Please Note: Those who use oil paints should bring their own container(s) to remove used solvents. Odorless solvents only.**



Gallery hours: Wednesday, Friday, Saturday, Sunday: 1 PM to 5 PM

July 2016

## Call for Volunteers



We have important positions within the PSC that need volunteers to take over! Contact Faad Ghoraishi at to help out your club with future events.

The Portfolio: The newsletter of the Philadelphia Sketch Club is published monthly. Editor: Ken Weiner;

Technical support and Web Master: Ken Weiner

Send your member news, announcements and corrections to [portfolio@sketchclub.org](mailto:portfolio@sketchclub.org). The due date for all materials is one week before the end of the month.

Back issues of the Portfolio are available at: <http://sketchclub.org/portfolio-archive/>

### The Philadelphia Sketch Club

235 S Camac Street  
Philadelphia, PA 19107  
(215) 545-9298  
<http://sketchclub.org/>  
[executivedirector@sketchclub.org](mailto:executivedirector@sketchclub.org)

Gallery Manager: Michelle Lockamy

#### Officers:

- President: Richard Harrington
- Vice President: Kenneth Weiner
- Secretary: Fran Carter
- Treasurer: William Patterson

#### Board of Directors

- Vincent Docktor
- Melanie Dion
- Stephen Iwanczuk
- William Kosman
- Kevin Myers
- Nancy H. Mills
- Brian Siegel
- Charles F. Tarr
- Joe Winter