

Gallery hours: Wednesday, Friday, Saturday, Sunday: 1 PM to 5 PM

November 2016



Ken Weiner

## This Month's Portfolio

Support the Sketch Club	2
Membership	6
Sketch Club Activities	7
Dinner Meeting	9
2016 Main Gallery Schedule	10
2016 Stuart Gallery Schedule	11
Sketch Club Open Workshop Schedule	12
Art Natters: Members News	13
Calls for Work and Notices	22
Member Classifieds	25
Call for Volunteers	26

Send your member news, announcements and corrections to [portfolio@sketchclub.org](mailto:portfolio@sketchclub.org). The deadline for ALL submissions is 1-week before the end of the month.

Reminder: It's never too late. You can always renew your membership

You may pay online at

<http://sketchclub.org/annual-dues-payment/>

or mail your check to:

The Philadelphia Sketch Club

235 S. Camac St.

Philadelphia, PA 19107

For questions please contact the Gallery

Manager at 215-545-9298 or email:

[executivedirector@sketchclub.org](mailto:executivedirector@sketchclub.org)

Late Breaking News – See items that were submitted after the publication date. Go to:

[info@sketchclub.org](mailto:info@sketchclub.org)

The PSC general email is: [info@sketchclub](mailto:info@sketchclub.org)

Gallery hours: Wednesday, Friday, Saturday, Sunday: 1 PM to 5 PM

November 2016

## Support the Sketch Club

### Contribute

Please consider making your tax deductible contribution now. These funds will be put to good use providing enhanced services to our members and friends.

Membership dues cover only a small portion of the PSC's operating expenses. Competition for funding for arts organizations like the Sketch Club is increasingly competitive and total funding for the arts is shrinking. Your additional support will keep the PSC an active support for visual artists in the Metropolitan Philadelphia area.

The Philadelphia Sketch Club is an IRS designated 501(c) (3) non-profit organization which allows your donations to be tax deductible.

You can call the office at 215-545-9298, mail checks to the Sketch Club or visit the Contribute page of our Website to give online at: <http://sketchclub.org/support-us/>

### Smile.Amazon.Com

Support the Sketch Club when you purchase from Amazon, use Amazon Smile

**It costs you nothing and makes money for the PSC**

The Sketch Club's AmazonSmile Link: <http://smile.amazon.com>

Thank you for your participation in the AmazonSmile program.

Purchases made by Sketch Club supporters using AmazonSmile in May resulted in a \$27.15 AmazonSmile contribution to the PSC. It's not much, but every cent helps. So don't forget, use the above link when purchasing from Amazon and increase the PSC's income.

### What is AmazonSmile?

AmazonSmile is a simple and automatic way for you to support your favorite charitable organization every time you shop, at no cost to you. When you shop at [smile.amazon.com](http://smile.amazon.com), you'll find the exact same low prices, vast selection and convenient shopping experience as Amazon.com, with the added bonus that Amazon will donate a portion of the purchase price to your favorite charitable organization. You can choose from nearly one million organizations to support.

To learn more about AmazonSmile go to: <http://smile.amazon.com/gp/aw/ch/about>

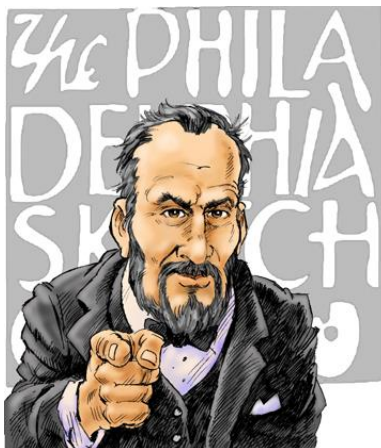


Gallery hours: Wednesday, Friday, Saturday, Sunday: 1 PM to 5 PM

November 2016

## Support the Sketch Club

### Volunteers are **Always** needed!



We are now seeking a PSC member with great organizational skills to assist in managing the Member Dinner arrangements. If you want to get involved in this important PSC activity, please contact us ACAP at: [executivedirector@sketchclub.org](mailto:executivedirector@sketchclub.org)

Other volunteer opportunities:

- Gallery Sitting
- Accept/Return Work
- Special Projects
- Assist with Exhibition Tasks

Help the PSC with important positions within the PSC that need volunteers to take over! Contact [Faad Ghoraishi](#) at to help your club with future events



The **PHOTOLounge** supports the Philadelphia Sketch Club and its members:

**Sketch Club Members receive a 15% discount at PHOTOLounge.  
Use online promo code "sketch".**

The PHOTOLounge is located at 1909 Chestnut St. Philadelphia PA 19103.

For nearly 20 years, PHOTOLounge's focus has been the simple idea that pictures should be beautiful, affordable, and long lasting. We're a very adept photo lab with diverse services from iPhone printing to shoebox scanning. You can bring us film for processing, and also order prints online, or from the App. Come in and print your world.

**Sketch Club Members receive a 15% discount at PHOTOLounge.  
Use online promo code "sketch".**

**267-322-6651 – [www.myphotolounge.com](http://www.myphotolounge.com)**

Gallery hours: Wednesday, Friday, Saturday, Sunday: 1 PM to 5 PM

November 2016

## Support the Sketch Club

### Sketch Club members receive 20% discount



Framing Family Treasures for over 20 Years



*We offer a variety of framing materials and techniques including:*

- Archival / conservation treatment • Specialty mats (Linen, Suede, Silk)
- Stretching / Blocking of needleart and oils
- 1000's of moulding choices • 22 karat finished corner frames • Memorabilia framing
- Custom toning / coloring • Decorative mat cuts • French matting • Fillets
- Mirrors • Shadowboxing • Dry Mounting

www.CanalFrame.com • CanalFrame@comcast.net • 215-493-3660  
1093 General Greene Road, Washington Crossing, PA 18977

Gallery hours: Wednesday, Friday, Saturday, Sunday: 1 PM to 5 PM

November 2016

## Support the Sketch Club

### Like, Link & Share

If you're not following the Philadelphia Sketch Club on Facebook re-tweeting Sketch Club tweets yet, it's time that you did. We have well over 2000 Facebook followers. Get the word out about the Sketch Club. Please click the like button and share your comments and invite your friends to like our page.

Follow @PhilaSketchClub on Twitter, we have almost 400 followers. Please click the heart button and re-tweet our announcements.

Include links on your website, blogs and social media to The Philadelphia Sketch Club to increase traction across social media platforms.

Follow us on Facebook, Twitter and Instagram now!

Thanks to Don Brewer and Michelle Lockamy for managing PSC social media sites.



Gallery hours: Wednesday, Friday, Saturday, Sunday: 1 PM to 5 PM

November 2016

## Membership

### Not a PSC Member?: Join Now!

If you're reading this edition of the Portfolio and you're not a member of the PSC, you should consider joining the more than 200 other Philadelphia area artists who have. The PSC is one of the most active visual art venues serving center city Philadelphia. The PSC is a hands-on organization that offers its members the opportunity to participate in all aspects of creating and presenting work to the public. It presents over 20 scheduled group and solo exhibitions annually and offers a wide range of daily workshops. [Get info and an application here.](#)

If you are a member of the PSC, please feel free to share the Portfolio with your artist friends and encourage them to become members.

### Membership Renewal

You can check the status of your membership by going to the Current Members page on the PSC web-site: <http://sketchclub.org/sample-page/memberspace/>. All current members are listed. An asterisk (\*) means that the membership has expired but is within the 60-day grace period for renewal. Names in red are active links to the individual's web site.

Renew Now! <http://sketchclub.org/annual-dues-payment/>

If you have any questions about your membership, please don't hesitate contact us at [membership@sketchclub.org](mailto:membership@sketchclub.org) or call the office: 215-545-9298.

### New Members this Month

The Sketch Club welcomes new members recently approved by the Board of Directors.

- Richard Stewart
- Jean Urciolo
- Messer Cooper

Current Sketch Club members can review new member applications at: <http://sketchclub.org/member-applications/>. The members only section and documents are password protected. If you've forgotten the password, please contact Ken Weiner at: [membership@sketchclub.org](mailto:membership@sketchclub.org).

Gallery hours: Wednesday, Friday, Saturday, Sunday: 1 PM to 5 PM

November 2016

## Sketch Club Activities

Check-out the Sketch Club Bulletin Board.



Recently, PSC members asked for some method of communicating between members of the PSC community. In response to this request, Board of Directors agreed to add a PSC Bulletin Board to the PSC web-site. You can visit and sign-up for this site at: <http://bbd.sketchclub.org/>.

You can also find the link on the PSC home page. Answers to questions about using the PSC BB are found on the Frequently Asked Questions (FAQ) page: [FAQs](#). The site is

monitored by **Ken Weiner**, PSC Vice-president.

Anyone can view entries on the site but you must register to post topics or responses. For starters, we've built-in a number of topics. We encourage the creation of new topics as needed.

Try it out. Enhance your creative life.



Gallery hours: Wednesday, Friday, Saturday, Sunday: 1 PM to 5 PM

November 2016

## Sketch Club Activities

### Critique Night

**Next Meeting: October 16th, 2016**

**Open to PSC Members and Non-Members**

RSVP to **Michelle Lockamy** at 215-545-9298 or

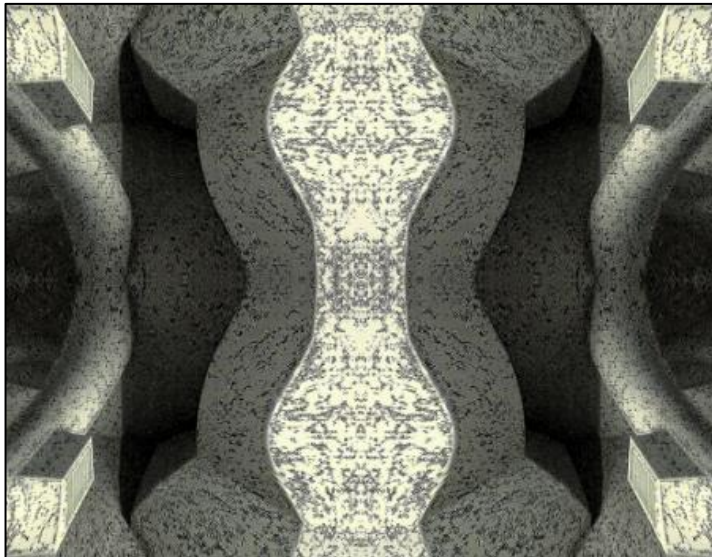
[executivedirector@sketchclub.org](mailto:executivedirector@sketchclub.org)

Critique Night is held in the Library of the Sketch Club every third Wednesday beginning at 7 PM. Bring work you've finished, work in progress, or just sketches for work you're planning! Photos, digital work, drawings, all mediums are welcome; we can project digital images on a screen for review, so you have the option to show work that may be too big or too heavy to transport to the Club. There is no one individual directing the critique, just your fellow artists and peers. Facilitated/monitored by **Rich Harrington**, PSC President



### Photo Circle

**Next Meeting: October 11th, 2016 from 6:30 to 8:30 PM**



The Photo Circle meets every 2<sup>nd</sup> Thursday at 6:30 PM. You can contact Steve anytime at [si22@drexel.edu](mailto:si22@drexel.edu) or 215-300-9192 (cell). **Steve Iwanczuk**, Photo Circle Monitor and Member of Philadelphia Sketch Club Board of Directors.



Gallery hours: Wednesday, Friday, Saturday, Sunday: 1 PM to 5 PM

November 2016

## Dinner Meeting

### Dinner Meeting

5:30 PM Friday November 11<sup>th</sup>



**Dinner and Presentation Open to the Public**

**Please RSVP to Michelle in the PSC office by 12 Noon November 9, 2016**

#### AGENDA

- 5:30- Social Period Begins
- 6:15- Speaker
- 7:15- Dinner

#### DINNER

- Members - \$16
- Guests - \$18

#### MENU

- *Chicken Scallopini with Penne Pasta*
- *Pasta Primavera (vegetarian)*
- *Salad, Rolls and Butter*
- *Coffee and Dessert*

### Guest Speaker: Donna Lovely

Donna D. Lovely is a fine art and freelance photographer with an eye of a painter. She studied drawing and painting before switching her focus to photography. She is interested in the emotive quality of images. She captures images with a personal and memorable twist.



Chinese Card Players, Kaifeng

Donna fell in love with photography at her alma mater, Tufts University, and furthered her photography education at Richmond College in London, S.U.N.Y. Purchase and Crealde School of Art, Winter Park, Florida. Her award-winning photographs are widely published and exhibited in both the United States and Europe, and her work is in numerous collections, including the prestigious permanent collections of the Orlando Museum of Art and Tampa Museum of Art. She has been part of over 80 group and juried exhibitions and 18 one woman shows.

Donna will do a presentation highlighting her most memorable photos and their back stories. She will share some useful tips on creating strong photos.

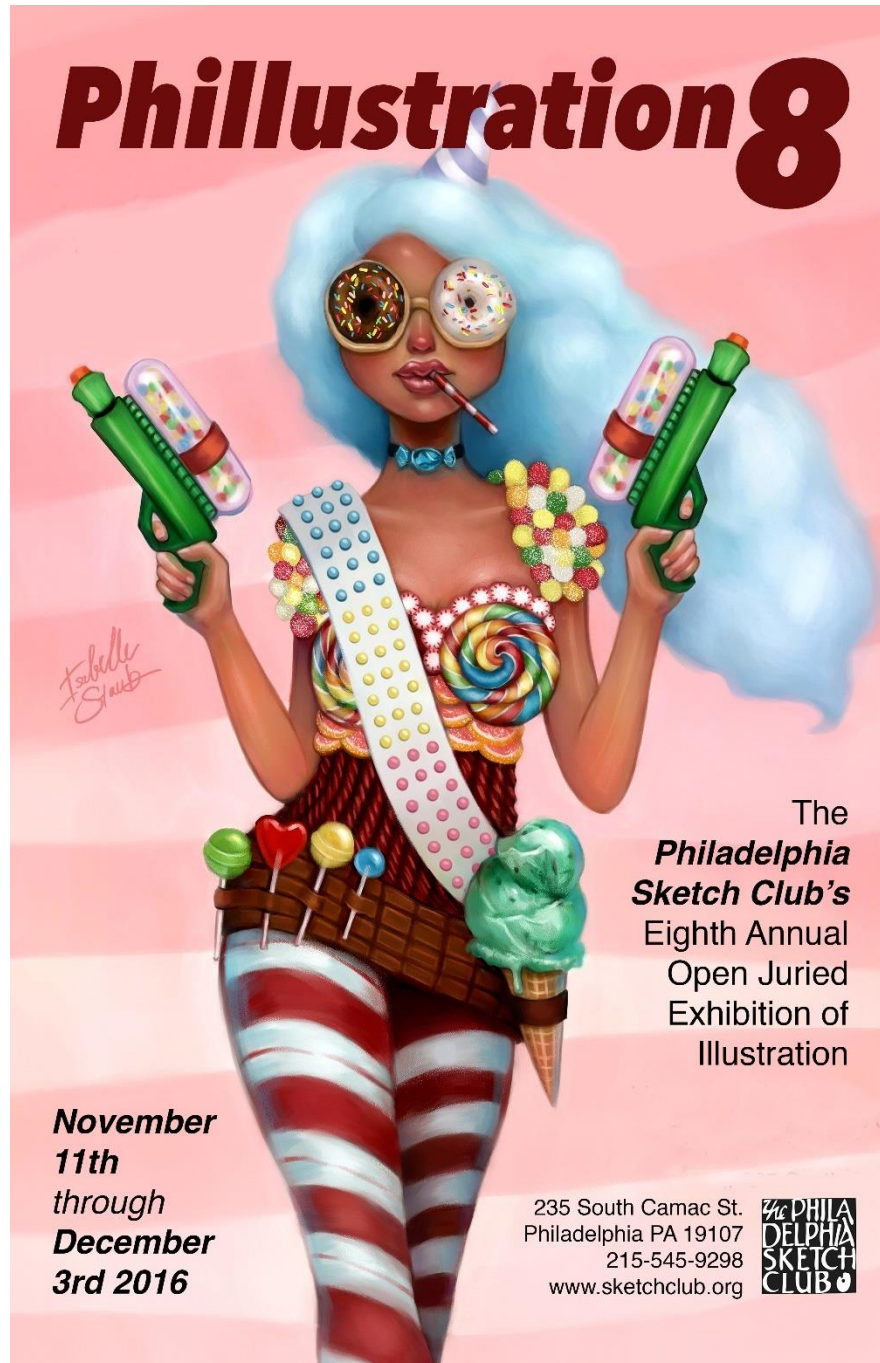
Get a sneak preview of her work on her website: [www.donnalovelyphotos.com](http://www.donnalovelyphotos.com)

Gallery hours: Wednesday, Friday, Saturday, Sunday: 1 PM to 5 PM

November 2016

## 2016 Main Gallery Schedule

Opening November 11 through December 3, 2016:  
The 2016 Philustration 8 Art Show



### Reception

- Sunday Nov 20, 2016, 2 – 4 PM at PSC
- PSC Medals and Cash Awards will be presented at 3:00 PM

Exhibition Chair: Richard Harrington

Gallery hours: Wednesday, Friday, Saturday, Sunday: 1 PM to 5 PM

November 2016

## 2016 Stuart Gallery Schedule

### Member Show – November 1 – 29, 2016

- Carolyn Barcomb -Eastside
- Connie LaRussa – WestSide

### Reception

- Sunday November 20, 2016, 2 – 4 PM at PSC

**Connie LaRussa's** art was not always the oil on canvas paintings and clay sculptures she does today. She always sketched in her free time but she originally pursued her artistic abilities professionally in the 1970s, doing jewelry design. Twenty years later, she redirected her artist's vision to the remodel of one of the oldest restaurants in the United States. For the past twenty years, sculpting with clay and painting with oils has been her main focus. She chooses to use oils because of the texture and intensity that they give her paintings. This is her first-time solo show being featured in the Philadelphia Sketch Club.



### Exhibition Schedule and Events Calendar Always Available at [sketchclub.org](http://sketchclub.org)

Don't forget, you can always see the schedule for the coming year on the PSC web-site. Go to the Calendars/Events menu and select Exhibition Schedule. Here's the link:

<http://sketchclub.org/exhibitions/>. And new for this year, we've added an Events Calendar under the Calendars/Events menu. This calendar will show a complete list of the dates for important activities and deadlines. See it here: <http://sketchclub.org/calendar/>



Gallery hours: Wednesday, Friday, Saturday, Sunday: 1 PM to 5 PM

November 2016

## Sketch Club Open Workshop Schedule

All workshops are open to the public. There is no need to register before attending. You do NOT have to be a member of the Philadelphia Sketch Club to participate in the workshops. Our workshops are open to anyone who is interested in drawing, painting or printmaking. All skill levels are welcome. Fees: Model workshops: \$8/session members, \$9/session for non-PSC members; Printmaking workshop: \$10/session; All workshops \$6 for full-time students. Monitored by PSC members.

Life Model	Costumed Model	Printmaking
<p>Mondays – Extended pose (multi-session): 6:30 PM-9:30PM</p> <p>Monitors: Robert Bohne, Vince Docktor, Dan Kuetemeyer</p> <p>Tuesdays – Extended pose: 12:00 PM to 3:00 PM Monitor: Jacqueline Barnett</p> <p>Wednesdays – Extended pose: 6:30 to 9:30 PM Monitor: Vince Docktor</p> <p>Saturdays – Extended pose: 9:30 AM to 12:30 PM Monitor: Vince Docktor</p>	<p>Thursdays</p> <p>Extended pose</p> <p>12:00 PM to 3:00 PM Monitor: Bob Bohne.</p>	<p>Tuesdays</p> <p>10:00 AM to 2:00 PM Monitor: Elizabeth H. MacDonald</p>

**Please Note: Those who use oil paints should bring their own container(s) to remove used solvents. Odorless solvents only.**

Gallery hours: Wednesday, Friday, Saturday, Sunday: 1 PM to 5 PM

November 2016

## Art Natters: Members News

### Donald A. Meyer's Egg Tempera Triptych on View at Michener Art Museum

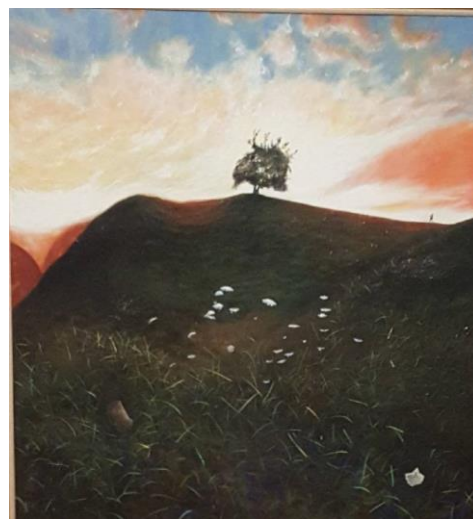
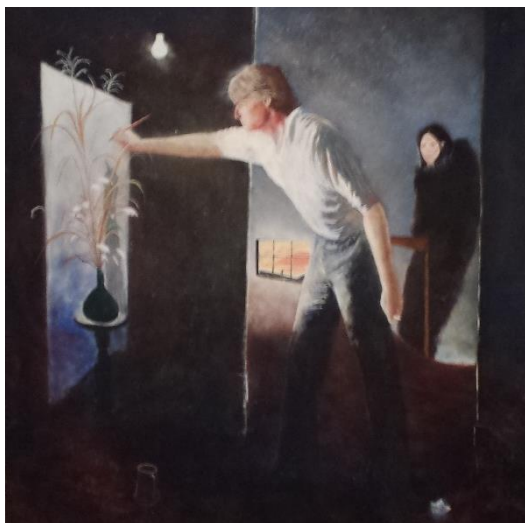


Donald Meyer (1945 - 2002) was a very active member of the Philadelphia Sketch Club. He joined the Club in 1996 and served for many years on the Board of Directors and as Vice President.

Some of his accomplishments as an artist included a solo exhibition at the Phillip & Muriel Berman Museum of Art at Ursinus College and serving as an artist in residence at the Masterworks Foundation in

Hamilton, Bermuda.

His work, *Exton Triptych*, 2002, is currently on view at the James A. Michener Art Museum in Doylestown, where it is in the museum's permanent collection. The overall size of the triptych is 78" x 234" and the medium is egg tempera on canvas. The work is shown in an extensive exhibition which includes works by contemporary artists such as Elizabeth Osborne and Diane Burko as well as historic works by artists such as Daniel Garber



Gallery hours: Wednesday, Friday, Saturday, Sunday: 1 PM to 5 PM

November 2016

## Art Natters: Members News

**Alice Chung** has an exhibition with 6 other Korean artists from Nov. 16 to Dec. 16, 2016 at the Montgomery County Community College Art Center Gallery in Blue Bell ( Central Campus ).



Figure 1Croatia

She is working as a president of the artists group: Philadelphia Arts Connection, established in 2010.

She is exhibiting 10 Pieces of Oil, Acrylic and Mixed media paintings

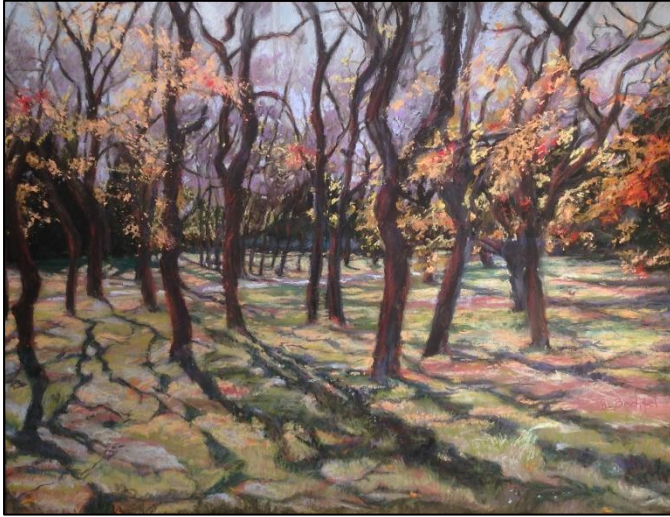
Reception is Nov. 30, 5PM - 7 PM



Gallery hours: Wednesday, Friday, Saturday, Sunday: 1 PM to 5 PM

November 2016

**Brenda L Bechtel** is pleased that her watercolour, "Memories of Infinitude" was recognized by Awards Judge Carter Ratcliff with the Hunter Editions Giclee Art Materials Award in Allied Artists of America 103rd National Exhibition at the Salmagundi, NYC. The Guild of Boston Artists on Newbury Street in Boston (Jurors



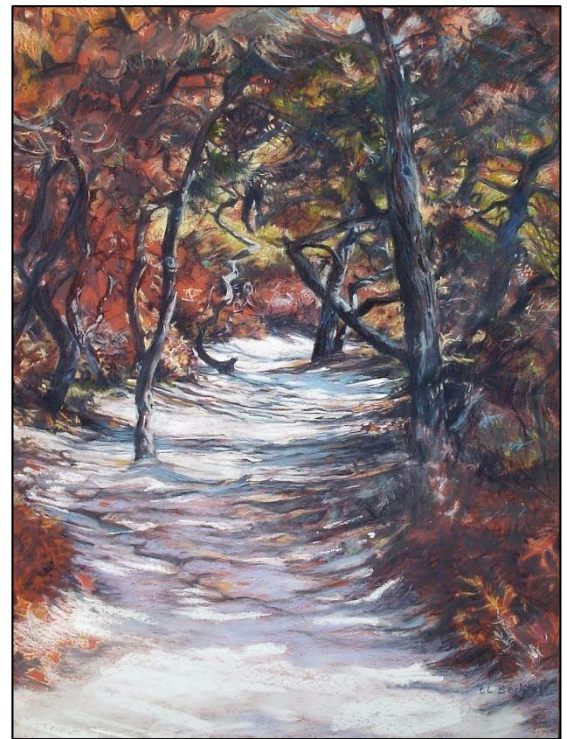
**Parker & Plum**

Exhibition on view through November 14.

The Salmagundi Club, NYC will be hosting the American Artists Professional League for the 88th Grand National, November 5th - the 19th. Brenda's Art is included. Judges, Brandon Soloff and Sam Adoquoi Award selections will be announced during the Reception, November 13.

The National Arts Club, Gramercy Park South, NYC will be fully decked out in "Holiday" finery as they celebrate Catharine Lorillard Wolfe National Art Club's 120th Annual Open Juried Exhibition, November 29 through December 16 and includes Brenda's Oil on Linen "Blue Skies Smiling at Me". Benefit reception for the Metropolitan Museum, December 9, Awards Dinner December 16, 2016, both at the National Arts Club. More details may be found at Brenda's website [www.Angelfire.com/Art2/Brookside](http://www.Angelfire.com/Art2/Brookside)

Michele Jung, Donald Jurney, Lynne Mehlman) choose 39 paintings to be included in the 11th Regional Exhibition in the President's Gallery and includes "Memories of Infinitude" through October 29. Geoffrey Smith, Jeff Lovinger and Domonic Boreffi have Awarded Brenda's Pastel, "Parker & Plum" with an Honorable Mention in the Cape Cod Art Association 2016 All New England, National



**White Cedar**

Gallery hours: Wednesday, Friday, Saturday, Sunday: 1 PM to 5 PM

November 2016

## Art Natters: Members News

On November 25<sup>th</sup>, 26<sup>th</sup>, and 27<sup>th</sup>, **Nick Santoleri** will be welcoming the public to his *Holiday Open Studio and Art Show* at 1515 West Chester Pike, Unit A6 in West Chester, PA. Many new works will be featured in this exciting exhibit – from original paintings to pencil drawings. They include lovely seaside studies like “Sandy Hook Lighthouse” and “Cape May Castles,” as well as familiar historic sites like “The Newtown Square Friends Meeting” and “Manayunk.” Enjoy refreshments, visit with Nick, and browse through an exceptional selection of original framed works, unframed limited editions and open edition prints.



“Penn State II”  
(Old Main)

Nick’s unmistakable talent is easily recognized. Everyone from sophisticated NY collectors to his thousands of followers on Facebook can identify his realistic attention to detail and the historic validity of his subjects. They are distinguishing features of his art, and patrons love to linger over his pencil drawings and paintings. The art is remarkably precise, and the subjects are quintessentially Nick: massive stone and wood structures, complex landscapes, water, wildlife, and deep woods. Or powerful and sensitive portraits you can almost see breathing.

Join Nick at his studio, learn more about his art, and find an absolutely perfect gift for someone on your holiday list. Celebrate 31 years as a full time artist with Nick Santoleri on

- **Friday Night** – November 25, 2016 (5 pm – 10 pm)
- **Saturday & Night** – November 26, 2016 (10 am – 10 pm)
- **Sunday** – November 27, 2016 (10 am – 6 pm)

**Where:** 1515 West Chester Pike, Unit A6 West Chester, PA. 19382

You can follow Nick on his Facebook page: Nicholas P. Santoleri, as well as his website [www.santoleri.com](http://www.santoleri.com) His email is [Nick@santoleri.com](mailto:Nick@santoleri.com) and his studio phone is (610) 995-2047.



Gallery hours: Wednesday, Friday, Saturday, Sunday: 1 PM to 5 PM

November 2016

## Art Natters: Members News

PSC member, **Peter Quarracino** is having a Solo Show at:  
Chester County Art Association  
100 North Bradford Avenue  
West Chester, PA 19382

Peter Quarracino, Real and Imagined  
October 28- November 17, 2016  
Opening reception Oct. 27, 5-8 PM

<mailto:pete@quarracino.com>

[www.quarracino.com](http://www.quarracino.com)

484-472-2231



Dock of the Bay

PSC member **Dino Sistilli** won first place at the Medford Arts Center 8th Annual Fall Fine Art Juried exhibition.



Ocean Breeze

The ceremony was held on October 7, 2016 and the painting honored was "Ocean Breeze".

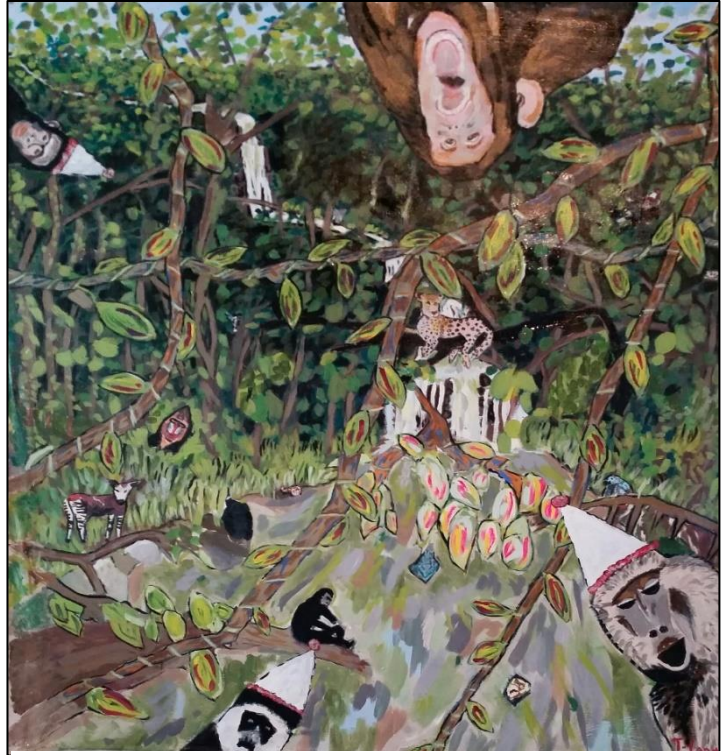


Gallery hours: Wednesday, Friday, Saturday, Sunday: 1 PM to 5 PM

November 2016

## Art Natters: Members News

PSC member **Tracey Landmann** has been awarded the funding necessary to create a living coral reef mural for the University of Delaware's Pediatric Mobility Lab and UD GoBabyGo! workshops. The grant is through Delaware Division of the Arts. This will be her second mural for the Lab.



Welcome to the JP

**Idaherma Williams** Woodblock Prints in color, a one-person show, will be at the Phila Plastic Club

Reception Sunday Nov 6th at the B.Jackson Gallery

Work in the Chahoon Museum of American Art Contuit, Mass

The Show is called Botanica and my piece is a woodblock print Treaty Oak

Gallery hours: Wednesday, Friday, Saturday, Sunday: 1 PM to 5 PM

November 2016

## Art Natters: Members News

PSC member **Michael Budden** recently won three first place awards. He won two awards at Gallery 50, located in Bridgeton NJ, landscape show and their plein air show. He also won Best of Show with "Morning Sun" at Smithville Mansion Annual Juried Exhibition. He has a painting included in the Thirty Seventh International Marine Art Exhibition at Mystic Seaport Gallery and his paintings will be included in a group show at the Cooley Gallery this November.



Morning Sun

NAUDAIN STREET ART COLLABORATIVE

**SALLY K. EISENBERG**  
sallykeisenbergartist.com

"Sunshine Daydream," acrylic on canvas, 24" x 18"

**KAREN VILLARREAL**  
@karenvillarrealpaintings

"Stone Steps to the Sea," oil on linen, 12" x 9"

**November 12, 2016**  
11am to 7pm  
2503 Naudain Street, Philadelphia, PA 19146

Gallery hours: Wednesday, Friday, Saturday, Sunday: 1 PM to 5 PM

November 2016

## Art Natters: Members News

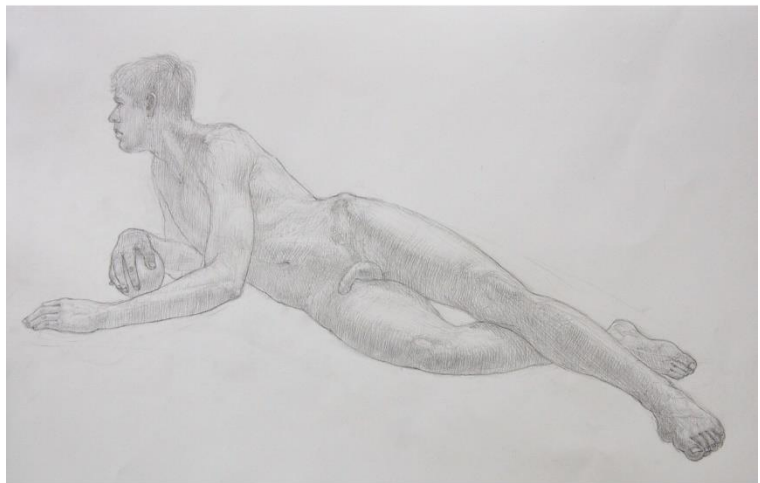
**Susan Barnes** received Third Place Award for her oil painting "Sailboat Moorings" in the 8th Annual Juried Fine Art Exhibit held at the Medford Arts Center in Medford, NJ.



**Sailboat Moorings**

The show runs through November 22, 2016. She also has two paintings in the Willingboro Art Alliance 21st Annual Open Juried Exhibition held at the Dr. David Flinker Gallery, Virtua Memorial Hospital in Mount Holly, NJ.

**Jeff Dion's** drawing - Reclining Male with Sphere, won Best Male Nude at the Wayne Art Centers exhibition; The Nude, a juried exhibition. The drawing is 22x30" Pencil on watercolor paper.





Gallery hours: Wednesday, Friday, Saturday, Sunday: 1 PM to 5 PM

November 2016

## Art Natters: Members News

### Expressions: Tom Furey - Solo Exhibition

An opening reception will be held Sunday, November 13, from 12 pm to 3 pm for the exhibition "Expressions: **Tom Furey** - Solo Exhibition" at Bucks County Visitor Center, with new work from 2014 - 2016 expressing his world and experiences through landscapes, still life, seascapes, portraits, heavy industrial, and florals. The exhibition will continue through January 13, 2017. Bucks County Visitor Center, located at 3207 Street Road, Bensalem, PA 19020 is open every day, 9 am to 5 pm. For further information, call (215) 639-0300, e-mail [mvisitorcenter@visitbuckscounty.com](mailto:mvisitorcenter@visitbuckscounty.com), website <http://www.visitbuckscounty.com/listing/bucks-county-visitor-center/1922/>.



Tom Furey is an award winning, Bucks County Fine Artist, creating Contemporary American

Oil Paintings. He has been expressing his Artistic Ideas for over forty years. His subjects range from Bucks County Landscapes, Still Life, Floral to Heavy Industrial. In addition to a career in the Fine Arts, Mr. Furey also worked as a Professional Jewelry Designer in Bucks County and Philadelphia. Tom was educated at Bucks County Community College and the Maryland Institute of Art (MICA). After completing college, he returned to Bristol, Pa. and with two other local painters established an Artists' Community and Cooperative named the "Mill Street Studio". The Co-op served as a

working studio for many local artists and was functional for over twenty years. He was also the proprietor of a Pencil Portrait business. Today, he continues to create paintings for private collectors in addition to doing commissions. His paintings are in private collections held by clients in Canada, England, Ireland, Germany and the United States. Tom is a member of the Philadelphia Sketch Club and several Bucks County Artists' Organizations. You can contact Mr. Furey at 267-736-7834, and his website is: [www.tom-furey.com](http://www.tom-furey.com) or his email [tom@tom-furey.com](mailto:tom@tom-furey.com)



Font Hill Interior

Gallery hours: Wednesday, Friday, Saturday, Sunday: 1 PM to 5 PM

November 2016

## Calls for Work and Notices

Don't Miss this Opportunity: Sketch Club Web Site Front Page Image Contest

**There's still time to enter: Deadline Extended – Date to be Announced**



### The Philadelphia Sketch Club

Visual artists dedicated to fostering creativity, art appreciation and education

235 S. Camac St  
Center City • Philadelphia • PA • 19107

Hours: Wed • Fri • Sat • Sun • 1-5pm  
215 • 545 • 9298



## Announcing the “Sketch Club Web-site Headliner Competition”

With PSC leadership authority, I've formed a ad hoc committee to plan and implement web-site changes. Working with sketch club member Cheryl Soltis, our PSC gallery manager, Michelle Lockamy and our summer interns Chelsea Lyons and Erica Richards, we will craft a new look for the site.

Over the next few months you will see changes. A logical reorganization of the main menu, text revisions and clarifications, more text and visual information and a new banner image.

Now, about that banner. I'm sure that you're familiar with the banner on the PSC web-site shown above. This venerable banner has been the mainstay image of the PSC web-site for years. However, it's time for a change.

### Here are the Rules:

1. Send us your idea of a great banner for the PSC's web-site
2. It will be judged by popular vote by PSC membership
3. The winner will be announced at the Sketch Club's 2016 Gala
4. The winning image will become the new web-site banner

### Here are the specifications:

- **Deadline: September 31, 2016**
- Subject: appropriate but open to your imagination
- Format 1000 ppi across, 300 – 400 ppi wide.
- Resolution: high (300 ppi)
- File type: native In Design, Photoshop, etc.

Gallery hours: Wednesday, Friday, Saturday, Sunday: 1 PM to 5 PM

November 2016

## Calls for Work and Notices

### Or Hadash Staircase Gallery

Reconstructionist Congregation Or Hadash in Fort Washington, PA is housed in a historic building, formerly the summer mansion of well-known society families. We have adapted a formerly grand entrance staircase into what we call The Staircase Gallery.

The Staircase Gallery has been having 3 shows a year for over 14 years. We have had shows featuring a diverse group of painters, photographers, children's art, and illustrators. We have incorporated writings and travel logs into exhibits for multi-talented artists who work in multiple mediums.

We are always looking for local artists who would like to show their work. The application process is to simply let us know of your interest, sending us a link to a site where we can see your work. If the Gallery committee feels your work would work in our space, we will contact you to schedule a show. The school students pass through the gallery so we must consider what is appropriate viewing for them in our decision making process. Many artists make a list of prices available for sales. We provide assistance in the hanging of the show and let the artist know what supporting documents are typically displayed.

We are currently scheduling for the 2017 season and going forward. If you would like to have a show in our unique and charming gallery, please let us know at [mikeoswald@comcast.net](mailto:mikeoswald@comcast.net). We will start the process and let you know what the steps are if we go forward.

### The Moss Rehab Hospital Art Exhibit

The Moss Rehab Hospital art exhibit opening in Elkins Park, PA September 23 through November 4, 2016. The jurors were Ross Lance Mitchell, director of the Barnes Foundation in Philadelphia and Val Rossman who has been on the faculty of the Main Line Art Center for the past twenty years. To view and purchase art work from the All About Art at Moss Rehab artists, visit: <https://advance.einstein.edu/mossartsales>. For more information please visit <http://www.mossrehab.com/> or call 1-800-CALL MOSS.



Gallery hours: Wednesday, Friday, Saturday, Sunday: 1 PM to 5 PM

November 2016

## Calls for Work and Notices

### Academy House Exhibition Opportunity

The Academy House art committee is now looking for pieces to display in our lobby starting sometime in April.

If any of your artists at the Philadelphia Sketch Club are interested, ask them to stop into the lobby (which now can be accessed only through 251 S. 15th Street) and look at the spaces currently being used. (The two pieces on the lobby level are smaller than we would prefer; the piece on the landing is an appropriate size.) If they think they have work that would be suitable for us, ask them to send photos and dimensions and we will take them up for consideration. Pieces displayed can be for sale, though the condo asks 20% of the selling price.

Photos can be emailed to this address or dropped off at the front desk with my name on the envelope.

Thanks,

Michael Goldman

[academyhousearts@gmail.com](mailto:academyhousearts@gmail.com)

1425 Locust Street

Philadelphia, PA 19102

Gallery hours: Wednesday, Friday, Saturday, Sunday: 1 PM to 5 PM

November 2016

## Calls for Work and Notices

### Good Reads: Members Suggestions

From time-to-time, we receive suggestions for art-related material that we feel our members would find interesting.

This month, PSC member, **Patricia Ilves-Corressel** highly recommends the following links that provide in-depth information about Canadian artists comprising the Group of Seven.

- <http://www.arthistoryarchive.com/arthistory/canadian/The-Group-of-Seven.html>
- <http://www.northernontario.travel/group-of-seven/group-of-seven>
- <https://www.thestar.com/entertainment/visualarts/2016/07/01/this-lawren-harris-gossip-as-delicious-as-ever.html>
- <http://www.arthistoryarchive.com/arthistory/canadian/Lawren-Harris.html>

Emily Carr, may be the most famous Canadian woman painter, was later included into the group of seven. Here's a link: <http://www.arthistoryarchive.com/arthistory/canadian/Emily-Carr.html>

Something you find interesting that you want to share? Send it to [portfolio@sketchclub.org](mailto:portfolio@sketchclub.org) to be included in the Portfolio

## Member Classifieds

### Photography Services for Artists

Do you need high-quality digital images of your work? Is glare a problem? Color balance not quite right? I can help you get great images of your 2-D or 3-D work suitable for digital file output or output for presentation and hard-copy presentation. I offer flexible availability, willingness to travel, special pricing for Sketch Club members. Contact: **Ken Weiner**

[note2kenweiner@verizon.net](mailto:note2kenweiner@verizon.net); =  
215-280-6325.

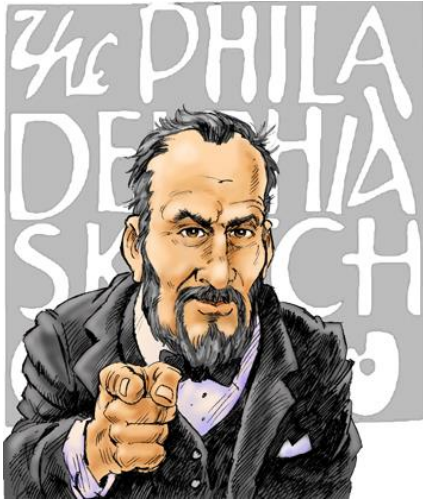
### Seeking Framers

Sketch Club members frequently ask about framing services. If you wish to provide framing services to PSC members, please contact the PSC at [info@sketchclub.org](mailto:info@sketchclub.org) or call the PSC office: 215 545-92908

Gallery hours: Wednesday, Friday, Saturday, Sunday: 1 PM to 5 PM

November 2016

## Call for Volunteers



We have important positions within the PSC that need volunteers to take over! Contact Faad Ghoraishi at to help out your club with future events.

The Portfolio: The newsletter of the Philadelphia Sketch Club is published monthly. Editor: Ken Weiner;  
Technical support and Web Master: Ken Weiner

Send your member news, announcements and corrections to [portfolio@sketchclub.org](mailto:portfolio@sketchclub.org). The due date for all materials is one week before the end of the month.

Back issues of the Portfolio are available at: <http://sketchclub.org/portfolio-archive/>

### The Philadelphia Sketch Club

235 S Camac Street  
Philadelphia, PA 19107  
(215) 545-9298  
<http://sketchclub.org/>  
[executivedirector@sketchclub.org](mailto:executivedirector@sketchclub.org)

Gallery Manager: Michelle Lockamy

### Officers:

- President: Richard Harrington
- Vice President: Kenneth Weiner
- Secretary: Fran Carter
- Treasurer: William Patterson

### Board of Directors

- Vincent Docktor
- Melanie Dion
- Stephen Iwanczuk
- William Kosman
- Kevin Myers
- Nancy H. Mills
- Brian Siegel
- Charles F. Tarr
- Joe Winter