

Gallery hours: Wednesday, Friday, Saturday, Sunday: 1 PM to 5 PM

September 2016



Rich Harrington

This Month's Portfolio

Support the Sketch Club	2
Membership	4
Sketch Club Activities	8
Dinner Meeting	10
2016 Main Gallery Schedule	11
2016 Stuart Gallery Schedule	13
Art Natters: Members News	14
Calls for Work and Notices	21
Member Classifieds	23
Sketch Club Open Workshop Schedule	24
Call for Volunteers	25

Send your member news, announcements and corrections to portfolio@sketchclub.org. The deadline for ALL submissions is 1-week before the end of the month.

Reminder: It's never too late. You can always renew your membership

You may pay online at

<http://sketchclub.org/annual-dues-payment/>

or mail your check to:

The Philadelphia Sketch Club

235 S. Camac St.

Philadelphia, PA 19107

For questions please contact the Gallery

Manager at 215-545-9298 or email:

executivedirector@sketchclub.org

Late Breaking News – See items that were submitted after the publication date. Go to:

info@sketchclub.org

The PSC general email is: info@sketchclub

Gallery hours: Wednesday, Friday, Saturday, Sunday: 1 PM to 5 PM

September 2016

Support the Sketch Club

Contribute

Please consider making your tax deductible contribution now. These funds will be put to good use providing enhanced services to our members and friends.

Membership dues cover only a small portion of the PSC's operating expenses. Competition for funding for arts organizations like the Sketch Club is increasingly competitive and total funding for the arts is shrinking. Your additional support will keep the PSC an active support for visual artists in the Metropolitan Philadelphia area.

The Philadelphia Sketch Club is an IRS designated 501(c) (3) non-profit organization which allows your donations to be tax deductible.

You can call the office at 215-545-9298, mail checks to the Sketch Club or visit the Contribute page of our Website to give online at: <http://sketchclub.org/support-us/>

Support the Sketch Club when you purchase from Amazon, use Amazon Smile

It costs you nothing and makes money for the PSC

The Sketch Club's AmazonSmile Link: <http://smile.amazon.com>

Thank you for your participation in the AmazonSmile program.

Purchases made by Sketch Club supporters using AmazonSmile in May resulted in a \$27.15 AmazonSmile contribution to the PSC. It's not much, but every cent helps. So don't forget, use the above link when purchasing from Amazon and increase the PSC's income.

What is AmazonSmile?

AmazonSmile is a simple and automatic way for you to support your favorite charitable organization every time you shop, at no cost to you. When you shop at smile.amazon.com, you'll find the exact same low prices, vast selection and convenient shopping experience as Amazon.com, with the added bonus that Amazon will donate a portion of the purchase price to your favorite charitable organization. You can choose from nearly one million organizations to support.

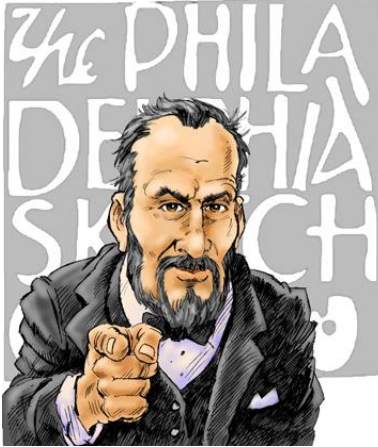
To learn more about AmazonSmile go to: <http://smile.amazon.com/gp/aw/ch/about>

Gallery hours: Wednesday, Friday, Saturday, Sunday: 1 PM to 5 PM

September 2016

Support the Sketch Club

Volunteers are **Always** needed!



We are now seeking a PSC member with great organizational skills to assist in managing the Member Dinner arrangements. If you want to get involved in this important PSC activity, please contact us ACAP at: executivedirector@sketchclub.org

Other volunteer opportunities:

- Gallery Sitting
- Accept/Return Work
- Special Projects
- Assist with Exhibition Tasks

Help the PSC with important positions within the PSC that need volunteers to take over! Contact [Faad Ghoraishi](#) at to help your club with future events



The **PHOTOLounge** supports the Philadelphia Sketch Club and its members:

**Sketch Club Members receive a 15% discount at PHOTOLounge.
Use online promo code "sketch".**

The PHOTOLounge is located at 1909 Chestnut St. Philadelphia PA 19103.

For nearly 20 years, PhotoLounge's focus has been the simple idea that pictures should be beautiful, affordable, and long lasting. We're a very adept photo lab with diverse services from iPhone printing to shoebox scanning. You can bring us film for processing, and also order prints online, or from the App. Come in and print your world.

**Sketch Club Members receive a 15% discount at PHOTOLounge.
Use online promo code "sketch".**

267-322-6651 – www.myphotolounge.com

Gallery hours: Wednesday, Friday, Saturday, Sunday: 1 PM to 5 PM

September 2016

Support the Sketch Club

Like, Link & Share

If you're not following the Philadelphia Sketch Club on Facebook re-tweeting Sketch Club tweets yet, it's time that you did. We have well over 1700 followers. Get the word out about the Sketch Club. Please click the like button and share your comments and invite your friends to like our page.

Follow @PhilaSketchClub on Twitter, we have almost 400 followers. Please click the heart button and re-tweet our announcements.

Include links on your website, blogs and social media to The Philadelphia Sketch Club to increase traction across social media platforms.

Follow us on Facebook Twitter now!

Thanks to Don Brewer for managing PSC social media sites.



Membership

Become a Member of the Philadelphia Sketch Club!

If you're reading this edition of the Portfolio and you're not a member of the PSC, you should consider joining the more than 200 other Philadelphia area artists who have. The PSC is one of the most active visual art venues serving center city Philadelphia. The PSC is a hands-on organization that offers its members the opportunity to participate in all aspects of creating and presenting work to the public. It presents over 20 scheduled group and solo exhibitions annually and offers a wide range of daily workshops. [Get info and an application here.](#)

If you are a member of the PSC, please feel free to share the Portfolio with your artist friends and encourage them to become members.

Membership Renewal

You can check the status of your membership by going to the Current Members page on the PSC web-site: <http://sketchclub.org/sample-page/memberspace/>. All current members are listed. An asterisk (*) means that the membership has expired but is within the 60-day grace period for renewal. Names in red are active links to the individual's web site.

Renew Now! <http://sketchclub.org/annual-dues-payment/>

If you have any questions about your membership, please don't hesitate contact us at membership@sketchclub.org or call the office: 215-545-9298.



Gallery hours: Wednesday, Friday, Saturday, Sunday: 1 PM to 5 PM

September 2016

Membership

New Members this Month

The Sketch Club welcomes new members recently approved by the Board of Directors.

- Edna Santiago
- Jim Conner
- Robert Hansen
- Wieslawa Langenfeld

Current Sketch Club members can review new member applications at: <http://sketchclub.org/member-applications/>. The members only section and documents are password protected. If you've forgotten the password, please contact Ken Weiner at: membership@sketchclub.org.

Gallery hours: Wednesday, Friday, Saturday, Sunday: 1 PM to 5 PM

September 2016

The Philadelphia Sketch Club's 156th Anniversary Gala

Please join us for our 156th Anniversary Gala on Saturday, October 15th. The Gala will be held at the Philadelphia Sketch Club, 235 S. Camac Street, Philadelphia, PA 19107, from 6 to 10 PM. You will have a fun time and get to mix with many prominent members of the artistic community. At the Gala, we will honor three of America's top artists, Jan C. Baltzell, Eileen Taber Goodman and Cindi Royce Ettinger, with the presentation of the Philadelphia Sketch Club Medal. Below is a notice of the event that will shortly appear in ICON Magazine.



Honoring
Jan Baltzell,
Eileen Goodman
and Cindi Ettinger

SAVE the DATE

The Philadelphia
Sketch Club's
156th Anniversary
Gala

SATURDAY

October 15th, 2016

6 to 10 PM

Medal Presentation,
Live Art Auction,
Silent Auction,
Cocktails, Buffet

for more information
and to buy tickets visit
www.sketchclub.org
or call 215-545-9298



We have formed an Honorary Gala Committee whose membership includes many prominent individuals from the artistic community. The main job of the Honorary Gala Committee is to encourage people to attend the event. The Honorary Gala Committee currently includes: David R. & Holly Trostle Bringham (David is President and CEO of PAFA and Holly is an Artist); William R. Valerio, Director & CEO, Woodmere Art Museum; Lisa Tremper Hanover, Director & CEO, James A. Michener Art Museum; John & Cindy Affleck (John is President of Woodmere Art Museum's Board of Trustees and a second generation Sketch Club Member whose father, Ralph Affleck, was President of the PSC in 1951/52); Bill Scott, Artist & Member of Woodmere's Board of Trustees; Christopher Schmidt, Artist & Director of the Schmidt Dean Gallery; Dorothy J. del Bueno, Member of Woodmere's Board and Collections Committee; Sharon Ewing, Director of Gross McCleaf Gallery; Stephen Tarantal, Interim Provost and Professor Emeritus, the University of the Arts; Sally Bellet, Board Member at Woodmere and Drexel University; Karen Lightner, Head of the Art &

Gallery hours: Wednesday, Friday, Saturday, Sunday: 1 PM to 5 PM

September 2016

Literature Departments at the Free Library of Philadelphia; and David Weiss, Vice President at Freemans, a specialist on the *Antiques Roadshow* and guest auctioneer for the Gala auction. In addition to the medal presentations, highlights of the evening will include an unreserved live auction of artworks by the honored artists as well as some contemporary and historic works by Ranulph Bye, Ethel Herrick Warwick, Domenic DiStefano, John Lear, Oliver Grimsley and others. There will be an open bar, hors d'oeuvres and a buffet dinner.

You can order tickets at www.sketchclub.org or by calling 215-545-9298. Please order tickets promptly as we must provide a headcount to our caterer plus our capacity may be exceeded by the demand for tickets.

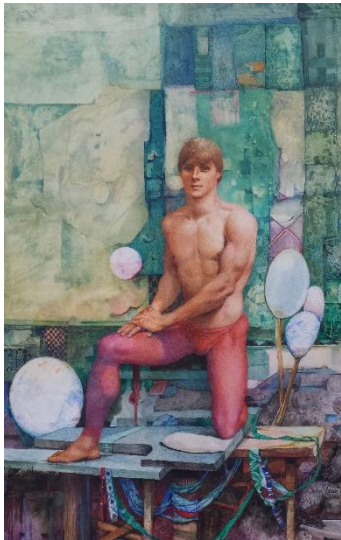
Here are a few of the artworks for the live auction:



Ethel Herrick Warwick, *Floral Still Life*, Oil on canvas



Ranulph Bye, *Spring Landscape*, Watercolor



John B. Lear, *Position Three*, Watercolor & watercolor pencil, 1987

Here is a link to a video of the 2015 Gala filmed and produced by John Thornton that will give you a view of this pleasant event. (Right click on link and then click on Open Hyperlink). <https://youtu.be/BNBmcfvMH4>

You can order tickets at www.sketchclub.org or by calling 215-545-9298. Please order tickets promptly as we must provide a headcount to our caterer plus our capacity may be exceeded by the demand for tickets:

<http://sketchclub.org/philadelphia-sketch-clubs-156th-anniversary-gala/>

Gallery hours: Wednesday, Friday, Saturday, Sunday: 1 PM to 5 PM

September 2016

Sketch Club Activities

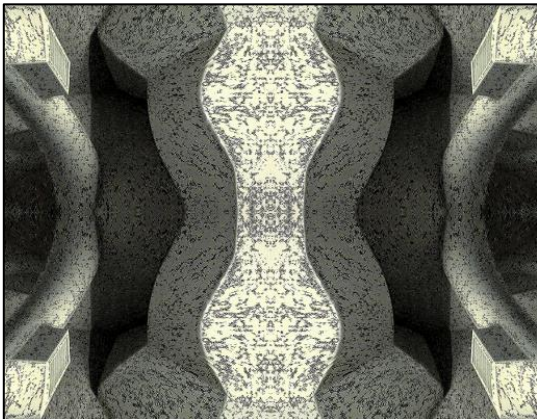
Next Meeting September 21st, 2016

Open to PSC Members and Non-Members

Critique Night is held in the Library of the Sketch Club every third Wednesday beginning at 7 PM. Bring work you've finished, work in progress, or just sketches for work you're planning! Photos, digital work, drawings, all mediums are welcome; we can project digital images on a screen for review, so you have the option to show work that may be too big or too heavy to transport to the Club. There is no one individual directing the critique, just your fellow artists and peers



Next Meeting: Thursday, September 8th, 2016 from 6:30 to 8:30 PM



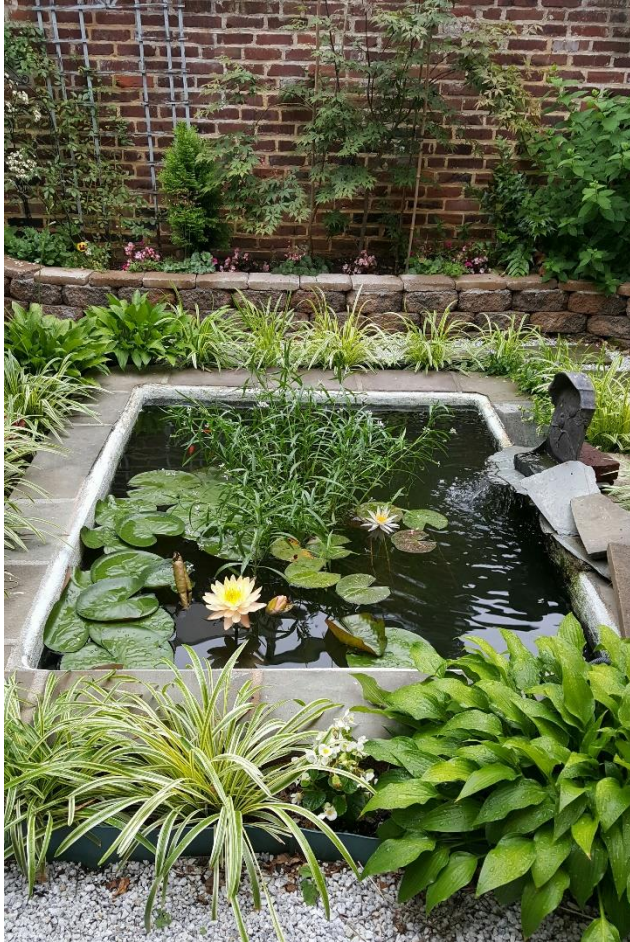
You can contact Steve anytime at si22@drexel.edu or 215-300-9192 (cell). **Steve Iwanczuk**, Photo Circle Monitor and Member of Philadelphia Sketch Club Board of Directors.

Gallery hours: Wednesday, Friday, Saturday, Sunday: 1 PM to 5 PM

September 2016

Sketch Club Activities

Enjoy the Sketch Club's Garden – It's especially nice in September



The PSC Garden is open all summer during gallery hours. Feel free to spend time in this quiet picturesque environment.

Recently, Chuck Tarr was enjoying a quiet moment and he noticed the first lily blossoms in the garden's pond and he couldn't resist taking this photo.

Gallery hours:

Wednesday, Friday, Saturday, Sunday: 1 PM to 5 PM

Gallery hours: Wednesday, Friday, Saturday, Sunday: 1 PM to 5 PM

September 2016

Dinner Meeting

Dinner Meeting September 9th, 2016

Dinner and Presentation Open to the Public Friday March 11, 2016

Pizzeria Chappelli as our new caterer, 209 South 13th Street.
Desserts are from Cake and the Beanstalk from 1112 Locust Street.

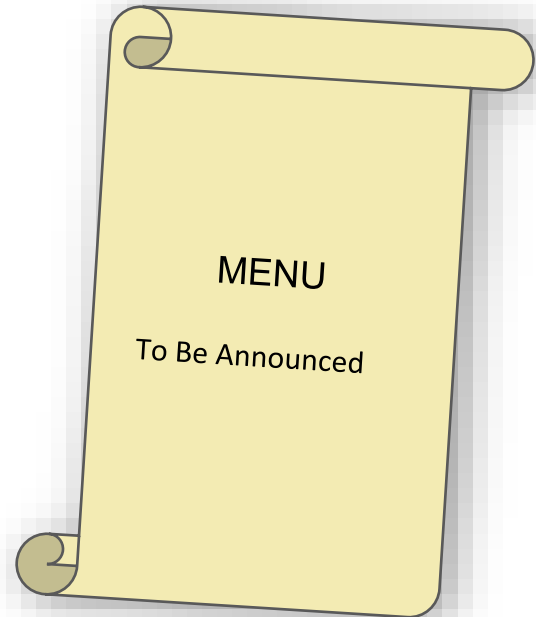


New Bud Vase*

**Please RSVP to Michelle in the
PSC office by 12 Noon
September 7, 2016**

AGENDA

- 5:30- Social Period Begins
- 6:15- Speaker
- 7:15- Dinner



Guest Speaker: Betty Minnucci

Betty will give a palette knife painting demonstration.

She was born in Doylestown. After graduating from Central Bucks, she went on to LockHaven University obtaining her degree in education. Betty has taught in both the Hatboro and Central Bucks school districts. Betty paints with oils using a pallet knife. Her compositions include animals, snowscapes and disappearing historical structures. She has studied with Liz Kenyon and Barbara Lang in Arizona, and Myron Barnstone of Barnstone Studios and lately with Jim Lukens. Betty has been accepted into many juried shows and has won awards through several galleries and art shows. She continues to be active in several art circles including an upcoming demo with pallet knife for the Philadelphia Sketch Club. Betty also does local demos with pastels, another verly successful medium for her.

Gallery hours: Wednesday, Friday, Saturday, Sunday: 1 PM to 5 PM

September 2016

2016 Main Gallery Schedule

In the Main Gallery

2016 Absolutely Abstract Show

September 2 – 24, 2016



**2015 First Place Award, Michelle Neifert, Perception of
Beauty, acrylic on canvas**

Reception:

- Sunday Sept 11, 2016, 2 – 4 PM at PSC
- PSC Medals and Cash Awards
will be presented at 3:00 PM

Exhibition Chair: Steve Iwanczuk

Gallery hours: Wednesday, Friday, Saturday, Sunday: 1 PM to 5 PM

September 2016

2016 Main Gallery Schedule

Next in the Main Gallery: 2016 Large Format Juried Art Show



2015 First Place Award, Ron Weisberg,
"Pipe Dream", Oil

Oct. 7-29, 2016

Deadline for On-line Submissions: **September 18, 2016** at midnight

Entry Fees:

Active PSC members: \$1 for one, \$20 each added entries
Non-Member: \$40 for one work, \$20 each added entries

10 works on the number of entries per artist.

Prospectus: [Large Format Show Prospectus 2016v1](#)

Enter online [HERE](#)

Gallery hours: Wednesday, Friday, Saturday, Sunday: 1 PM to 5 PM

September 2016

2016 Stuart Gallery Schedule

Member Show – September 1 – 30, 2016

Ruth K. Fackenthal will be showing paintings and drawings in the Stewart Room of the Philadelphia Sketch Club through the month of September.



Opening reception: Sunday afternoon, September 11th from 2 to 4 pm.

Her new website is a retrospective, with selections from the past and present: www.ruthkfackenthal.com

Exhibition Schedule and Events Calendar Always Available at sketchclub.org

Don't forget, you can always see the schedule for the coming year on the PSC web-site. Go to the Calendars/Events menu and select Exhibition Schedule. Here's the link: <http://sketchclub.org/exhibitions/>. And new for this year, we've added an Events Calendar under the Calendars/Events menu. This calendar will show a complete list of the dates for important activities and deadlines. See it here: <http://sketchclub.org/calendar/>

Gallery hours: Wednesday, Friday, Saturday, Sunday: 1 PM to 5 PM

September 2016

Art Natters: Members News

PSC member **Elaine Lisle** will be having a solo exhibition of her work at Gross McCleaf Gallery in September 2016.



23rd and Pine

Gross McCleaf opens its season with an exhibition by Philadelphia artist, Elaine Lisle. Lisle's paintings of the city and its environs reveal treasured moments of life at its fullest. Whether of a city street or sunlit countryside, these richly painted depictions are simultaneously lively and peaceful--a genuine reflection of beauty hiding in the everyday. These works begin



Red Reflections on the Schuylkill

with direct observation, followed by careful decisions made in the artist's studio involving color, contrast, and the patterns of light that play on surfaces. Through these vividly felt and personal images,

Lisle immerses the viewer in her vision. Opening Reception: Friday, September 9, 5-7PM
Gross McCleaf Gallery



1Dog in the Creek

127 S. Sixteenth Street
Philadelphia, PA 19102
215-665-8138

www.grossmccleaf.com



Sledding with a View

Gallery hours: Wednesday, Friday, Saturday, Sunday: 1 PM to 5 PM

September 2016

Art Natters: Members News

Michael Budden's painting "The Lunch Crowd" has been accepted into the 2016 Eastern Regional Juried Exhibition of Traditional Oils, Oil Painters of America at the Eisele Gallery in Cincinnati Ohio this September. This painting has won Mike three awards to date. Mike will have an exhibition locally of his urban paintings this October at the Travis Gallery , New Hope PA in October.



The Lunch Crowd

Patricia Ilve's painting "The Colour of Spring" was accepted by PAFA for the following exhibition:



The Colour of Spring

PAFA Fellowship Annual Members Exhibition (FAME 2016)_ Juried Exhibition

Sunday, July 31-(Opening Reception 2-5pm Historic Landmark Building) through Sunday September 11,2016 The Pennsylvania Academy of the Fine Arts <https://www.pafa.org/events/pafa-fellowship-annual-members-exhibition-opening-reception>

2016 Fame Juror:

Erica F. Battle, the John Alchin and Hal Marryatt Associate Curator of Contemporary Art, Philadelphia Museum of Art

Gallery hours: Wednesday, Friday, Saturday, Sunday: 1 PM to 5 PM

September 2016

Art Natters: Members News

Ben Cohen was awarded Burlington County Senior Art Show selection for acrylic (professional category) to go on to the NJ STATE Senior Citizen Annual Juried Art Finals

Brenda L Bechtel has two Oils on Linen included at Slater Memorial Museum, August 20 - September 23, in the Connecticut Women Artists 86th Annual National Exhibition, Judged by Min Jung Kim, Director of the New Britain Museum of American Art.

Beginning September 1, Allied Artists of America 103rd National Exhibition Juried by Yuka Imata and Masaki Noda (Watercolour, Pastel, Graphics Jurors) includes "Memories of Infinitude", Transparent Watercolour. Awards are chosen by Carter Radcliff and will be announced at the Closing Reception at the Salmagundi Club, 47 Fifth Ave NYC, September 18, 1 - 4pm.

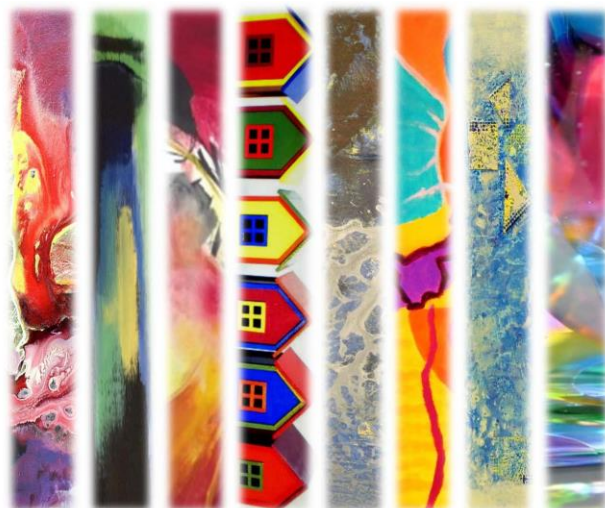


Birdland

Judge of Awards, Timothy Struna has awarded "Birdland"

Transparent Watercolour BEST IN SHOW in the Cape Cod Art Association Easel Art Exhibition. Cambridge Art Association, Harvard Square, Boston includes Brenda's Oil on Linen, Reflecting Pool with Ruins ~ Chanticleer" in the "72nd Fall Salon in Honor of Mary Schein" through September 28. Oil Painters of America includes "Blue Skies Smiling at Me" in the Summer Online competition. Find details at Brenda's website

www.Angelfire.com/Art2/Brookside



A
Abstract

A
Artists

B
Bucks

C
County

ABSTRACT ARTISTS

OF

BUCKS COUNTY

COME TO BRISTOL

Centre for the Arts

308 Mill Street, Bristol, PA

Sept. 22nd to Oct 13th, 2016

Reception Sept 22nd, 6pm to 8pm

Meet the artists for a round table discussion
at 5pm on the 22nd

ROGER BOE, ROBERT HANSEN, ARMOR KELLER,
NAN KIRSTEIN, LYNN MILLER,
RODNEY MILLER, LORETTA MONTGOMERY,
ROSEMARIE STRIPPOLI

Gallery hours: Wednesday, Friday, Saturday, Sunday: 1 PM to 5 PM

September 2016

Art Natters: Members News

Nancy E. F. Halbert will be teaching The Ultimate Subject: Figure Drawing and Painting, Thursdays, 9/29-12/1-6:30-9:30 pm, & Soft Pastel Painting for Beginners Workshop, Sundays, 11/6-11/20, 1-4 pm at Main Line Art Center, Haverford, PA www.mainlineart.org



Into the Field

Nancy will also be teaching several Beginning and Intermediate Watercolor Classes, Soft Pastels with Mixed Media, Drawing and Painting Classes at Creutzberg Campus and Lower Merion High School. For dates and times go to

www.mainlineschoolnight.org. She is available for critiques and semi and private lessons in her home

studio in Havertown, PA nefh@mac.com.



Winter Scarf

Nancy will be showing her contemporary figurative Art at 3rd Street Gallery in October with special events through POST weekend.



Date Night

"The Dancing Canvas" <http://www.youtube.com/watch?v=uRJTU7YWye0>

Gallery hours: Wednesday, Friday, Saturday, Sunday: 1 PM to 5 PM

September 2016

Art Natters: Members News

Susan Barnes has two paintings in the Long Beach Island Foundation's *Member, Student, Faculty Exhibition* in Loveladies, NJ.



"Big Sky", O/L, 23 7/8 x 23 7/8 inches, c. 2012 by S. Barnes

Her oil painting "Big Sky" received *Outstanding Achievement Ribbon Award*. The show runs through September 4, 2016.

Gail Ferretti's "Precious Metals 53" was accepted in the upcoming juried Fellowship show at the Pennsylvania Academy of the Fine Arts. FAME 2016--EXHIBITION DATES: SUNDAY JULY 31, 2016--SUNDAY SEPT 11, 2016,

Juror Erica Battle is Associate Curator of Contemporary Art, Philadelphia Museum of Art



Precious Metals 53

Gallery hours: Wednesday, Friday, Saturday, Sunday: 1 PM to 5 PM

September 2016

Art Natters: Members News

Pamela Tudor was accepted into the Second Language art exhibit at the DaVinci Art Alliance, 704 Catherine Street, Philadelphia. The following two pieces are on display and for sale.



Open gallery hours are Wednesday 6 - 8p and Saturday + Sunday 1 - 5p.

EXHIBITION: For our August exhibition, Second Language, we are excited to have juror Dr. J. Susan Isaacs, Professor of Art History and Curator at the University of Maryland. This juried exhibition is for artists that use creative expression to cross boundaries of language in order to communicate when spoken dialogue fails.

Plein Air Painting at the Independence Seaport Museum
Instructor: Joseph Sweeney

PAFA

Pennsylvania Academy of the Fine Arts

Painting | PT 606ED - SIX WEEKS

PLEIN AIR PAINTING ON THE DELAWARE - NEW!

MULTI-WEEK COURSES, TUESDAY | WEEKDAY

SEPTEMBER 27 2016 - NOVEMBER 01 2016 | 10:00 AM- 3:00 PM

For more information, go to: [Teaching List Fall 2016](#)

Gallery hours: Wednesday, Friday, Saturday, Sunday: 1 PM to 5 PM

September 2016

Art Natters: Members News

Artist **Susan A. Esbensen's** painting "OUTFOXED" was accepted into the New Hope Historical Society Art Show, "Living Artist." The jurors were Dot Bunn, Tamara Cannon from Gallery Piquel, and Lisa Tremper Hanover, CEO James A. Michener Museum. The jurors selected 123 works to be exhibited from 413 works submitted by 126 artists. The top 25 works will receive the Benjamin Parry Medal of Recognition.



Outfoxed

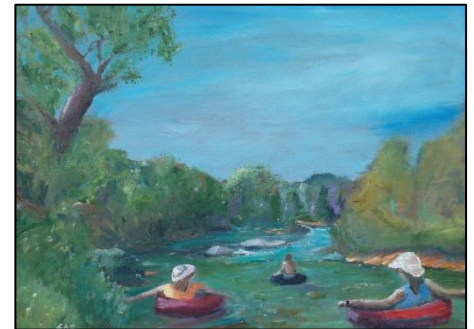
The opening reception is on September 9th, 2016 from 7-9 PM at New Hope Arts, 2 Stockton Ave., New Hope, PA, 2nd fl.

The show runs September 10th & 11th, from 10-6 PM.

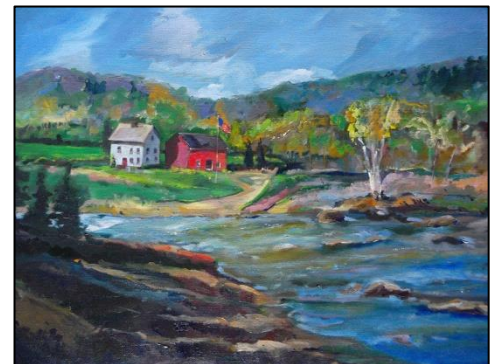


Hey Wait Up

Still Point Gallery online exhibition, "The River" currently has three painting by Susan A. Esbensen on display. Her painting "Hey, Wait UP" was selected for publication in the fall issue of Still Point Arts quarterly to be released on September 1st.



Summertime



A River Runs

Gallery hours: Wednesday, Friday, Saturday, Sunday: 1 PM to 5 PM

September 2016

Calls for Work and Notices

Don't Miss this Opportunity: Sketch Club Web Site Front Page Image Contest

There's still time to enter: Winner to be announced at the Sketch Club's 2016 Gala



The Philadelphia Sketch Club

Visual artists dedicated to fostering creativity, art appreciation and education

235 S. Camac St
Center City • Philadelphia • PA • 19107

Hours: Wed • Fri • Sat • Sun • 1-5pm
215-545-9298



The Sketch Club is wants to refresh the look and feel of its web-site.

With PSC leadership authority, I've formed a ad hoc committee to plan and implement web-site changes. Working with sketch club member Cheryl Soltis, our PSC gallery manager, Michelle Lockamy and our summer interns Chelsea Lyons and Erica Richards, we will craft a new look for the site.

Over the next few months you will see changes. A logical reorganization of the main menu, text revisions and clarifications, more text and visual information and a new banner image.

Now, about that banner. I'm sure that you're familiar with the banner on the PSC web-site shown above. This venerable banner has been the mainstay image of the PSC web-site for years. However, it's time for a change.

Announcing the "Sketch Club Web-site Headliner Competition"

Here are the Rules:

1. Send us your idea of a great banner for the PSC's web-site
2. It will be judged by popular vote by PSC membership
3. The winner will be announced at the Sketch Club's 2016 Gala
4. The winning image will become the new web-site banner

Here are the specifications:

- **Deadline: September 31, 2016**
- Subject: appropriate but open to your imagination
- Format 1000 ppi across, 300 – 400 ppi wide.
- Resolution: high (300 ppi)
- File type: native In Design, Photoshop, etc.

Gallery hours: Wednesday, Friday, Saturday, Sunday: 1 PM to 5 PM

September 2016

Calls for Work and Notices

Or Hadash Staircase Gallery

Reconstructionist Congregation Or Hadash in Fort Washington, PA is housed in a historic building, formerly the summer mansion of well-known society families. We have adapted a formerly grand entrance staircase into what we call The Staircase Gallery.

The Staircase Gallery has been having 3 shows a year for over 14 years. We have had shows featuring a diverse group of painters, photographers, children's art, and illustrators. We have incorporated writings and travel logs into exhibits for multi-talented artists who work in multiple mediums.

We are always looking for local artists who would like to show their work. The application process is to simply let us know of your interest, sending us a link to a site where we can see your work. If the Gallery committee feels your work would work in our space, we will contact you to schedule a show. The school students pass through the gallery so we must consider what is appropriate viewing for them in our decision making process. Many artists make a list of prices available for sales. We provide assistance in the hanging of the show and let the artist know what supporting documents are typically displayed.

We are currently scheduling for the 2017 season and going forward. If you would like to have a show in our unique and charming gallery, please let us know at mikeoswald@comcast.net. We will start the process and let you know what the steps are if we go forward.

Academy House Exhibition Opportunity

The Academy House art committee is now looking for pieces to display in our lobby starting sometime in April.

If any of your artists at the Philadelphia Sketch Club are interested, ask them to stop into the lobby (which now can be accessed only through 251 S. 15th Street) and look at the spaces currently being used. (The two pieces on the lobby level are smaller than we would prefer; the piece on the landing is an appropriate size.) If they think they have work that would be suitable for us, ask them to send photos and dimensions and we will take them up for consideration. Pieces displayed can be for sale, though the condo asks 20% of the selling price.

Photos can be emailed to this address or dropped off at the front desk with my name on the envelope.

Thanks,
Michael Goldman
academyhousearts@gmail.com
1425 Locust Street
Philadelphia, PA 19102

Gallery hours: Wednesday, Friday, Saturday, Sunday: 1 PM to 5 PM

September 2016

Calls for Work and Notices

Good Reads: Members Suggestions

From time-to-time, we receive suggestions for art-related material that we feel our members would find interesting.

This month, Patricia Ilves-Corressel highly recommends two articles. Here are the links:

- <https://www.thestar.com/entertainment/visualarts/2016/07/01/this-lawren-harris-gossip-as-delicious-as-ever.html>
- <http://www.arthistoryarchive.com/arthistory/canadian/Lawren-Harris.html>

Member Classifieds

Photography Services for Artists

Do you need high-quality digital images of your work? Is glare a problem? Color balance not quite right? I can help you get great images of your 2-D or 3-D work suitable for digital file output or output for presentation and hard-copy presentation. I offer flexible availability, willingness to travel, special pricing for Sketch Club members. Contact: Ken Weiner

note2kenweiner@verizon.net;
215-280-6325.

Seeking Framers

Sketch Club members frequently ask about framing services. If you wish to provide framing services to PSC members, please contact the PSC at info@sketchclub.org or call the PSC office: 215 545-92908

Gallery hours: Wednesday, Friday, Saturday, Sunday: 1 PM to 5 PM

September 2016

Sketch Club Open Workshop Schedule

All workshops are open to the public. There is no need to register before attending. You do NOT have to be a member of the Philadelphia Sketch Club to participate in the workshops. Our workshops are open to anyone who is interested in drawing, painting or printmaking. All skill levels are welcome. Fees: Model workshops: \$8/session members, \$9/session for non-PSC members; Printmaking workshop: \$10/session; All workshops \$6 for full-time students.

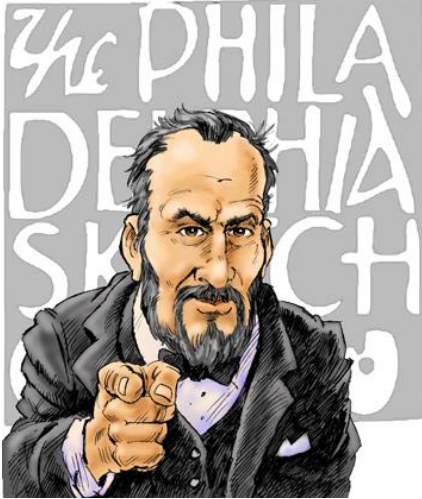
Life Model	Costumed Model	Printmaking
<p>Mondays – Extended pose (multi-session): 6:30 PM-9:30PM</p> <p>Monitors: Robert Bohne, Vince Docktor, Dan Kuetemeyer</p> <p>Tuesdays – Extended pose: 12:00 PM to 3:00 PM Monitor: Jacqueline Barnett</p> <p>Wednesdays – Extended pose: 6:30 to 9:30 PM Monitor: Vince Docktor</p> <p>Saturdays – Extended pose: 9:30 AM to 12:30 PM Monitor: Vince Docktor</p>	<p>Thursdays</p> <p>Extended pose 12:00 PM to 3:00 PM Monitor: Bob Bohne.</p>	<p>Tuesdays</p> <p>10:00 AM to 2:00 PM Monitor: Elizabeth H. MacDonald</p>

Please Note: Those who use oil paints should bring their own container(s) to remove used solvents. Odorless solvents only.

Gallery hours: Wednesday, Friday, Saturday, Sunday: 1 PM to 5 PM

September 2016

Call for Volunteers



We have important positions within the PSC that need volunteers to take over! Contact Faad Ghoraishi at to help out your club with future events.

The Portfolio: The newsletter of the Philadelphia Sketch Club is published monthly. Editor: Ken Weiner;

Technical support and Web Master: Ken Weiner

Send your member news, announcements and corrections to portfolio@sketchclub.org. The due date for all materials is one week before the end of the month.

Back issues of the Portfolio are available at: <http://sketchclub.org/portfolio-archive/>

The Philadelphia Sketch Club

235 S Camac Street
Philadelphia, PA 19107
(215) 545-9298
<http://sketchclub.org/>
executivedirector@sketchclub.org

Gallery Manager: Michelle Lockamy

Officers:

- President: Richard Harrington
- Vice President: Kenneth Weiner
- Secretary: Fran Carter
- Treasurer: William Patterson

Board of Directors

- Vincent Docktor
- Melanie Dion
- Stephen Iwanczuk
- William Kosman
- Kevin Myers
- Nancy H. Mills
- Brian Siegel
- Charles F. Tarr
- Joe Winter