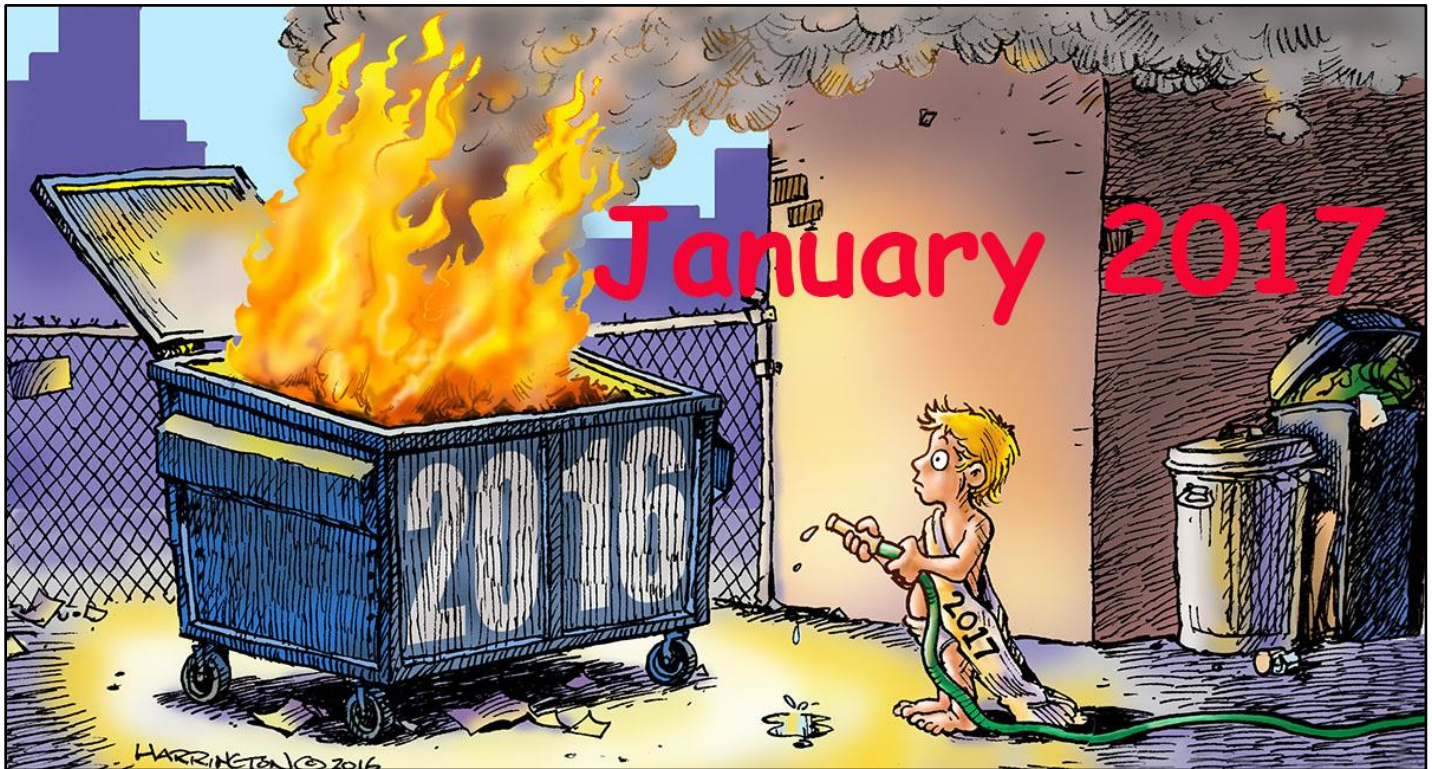


Gallery hours: Wednesday, Friday, Saturday, Sunday: 1 PM to 5 PM

January 2017



Richard Harrington

This Month's Portfolio

Support the Sketch Club	2
Membership	6
Sketch Club Activities	7
Dinner Meeting	10
2016 Holiday Party	11
2016 Main Gallery Schedule	12
2016 Stuart Gallery Schedule	15
Sketch Club Open Workshop Schedule	16
Art Natters: Members News	17
Calls for Work and Notices	22
Member Classifieds	25
Call for Volunteers	26

Send your member news, announcements and corrections to portfolio@sketchclub.org. The deadline for ALL submissions is 1-week before the end of the month.

Reminder: It's never too late. You can always renew your membership

You may pay online at

<http://sketchclub.org/annual-dues-payment/>

or mail your check to:

The Philadelphia Sketch Club

235 S. Camac St.

Philadelphia, PA 19107

For questions please contact the Gallery

Manager at 213335-545-9298 or email:

executivedirector@sketchclub.org

Late Breaking News – See items that were submitted after the publication date. Go to:

info@sketchclub.org

The PSC general email is: [info@sketchclub](mailto:info@sketchclub.org)



Gallery hours: Wednesday, Friday, Saturday, Sunday: 1 PM to 5 PM

January 2017

Support the Sketch Club

Contribute

Please consider making your tax-deductible contribution now. These funds will be put to good use providing enhanced services to our members and friends.

Membership dues cover only a small portion of the PSC's operating expenses. Competition for funding for arts organizations like the Sketch Club is increasingly competitive and total funding for the arts is shrinking. Your additional support will keep the PSC an active support for visual artists in the Metropolitan Philadelphia area.

The Philadelphia Sketch Club is an IRS designated 501(c) (3) non-profit organization which allows your donations to be tax deductible.

You can call the office at 215-545-9298, mail checks to the Sketch Club or visit the Contribute page of our Website.

Visit our **Contribute** page of our website to give online at:

<http://sketchclub.org/support-us/>

Contributors

This month, the PSC thanks **Gail Ferretti** and her husband **Howard Schaevitz** for their generous financial support to enable the club to replace the inadequate and failing refrigerator in the kitchen with a new 21 cubic foot GE refrigerator. This wonderful upgrade will enable the club to provide our membership and friends more varied refreshments and meals at PSC events.

Gallery hours: Wednesday, Friday, Saturday, Sunday: 1 PM to 5 PM

January 2017

Support the Sketch Club

Smile.Amazon.Com

Support the Sketch Club when you purchase from Amazon, use Amazon Smile
It costs you nothing and makes money for the PSC

The Sketch Club's AmazonSmile Link: <http://smile.amazon.com>

Thank you for your participation in the AmazonSmile program.

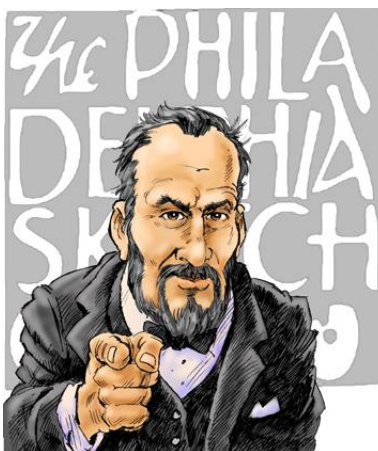
Purchases made by Sketch Club supporters using AmazonSmile in May resulted in a \$27.15 AmazonSmile contribution to the PSC. It's not much, but every cent helps. So don't forget, use the above link when purchasing from Amazon and increase the PSC's income.

What is AmazonSmile?

Amazon Smile is a simple and automatic way for you to support your favorite charitable organization every time you shop, at no cost to you. When you shop at smile.amazon.com, you'll find the exact same low prices, vast selection and convenient shopping experience as Amazon.com, with the added bonus that Amazon will donate a portion of the purchase price to your favorite charitable organization. You can choose from nearly one million organizations to support.

To learn more about Amazon Smile go to: <http://smile.amazon.com/gp/aw/ch/about>

Volunteers are **Always** needed!



We are now seeking a PSC member with great organizational skills to assist in managing the Member Dinner arrangements. If you want to get involved in this important PSC activity, please contact us ACAP at: executivedirector@sketchclub.org

Other volunteer opportunities:

- Gallery Sitting
- Accept/Return Work
- Special Projects
- Assist with Exhibition Tasks

Help the PSC with important positions within the PSC that need volunteers to take over! Contact [Faad Ghoraishi](#) at to help your club with future events

Gallery hours: Wednesday, Friday, Saturday, Sunday: 1 PM to 5 PM

January 2017

Support the Sketch Club



The **PHOTOLounge** supports the Philadelphia Sketch Club and its members:

**Sketch Club Members receive a 15% discount at PHOTOLounge.
Use online promo code "sketch".**

The PHOTOLounge is located at 1909 Chestnut St. Philadelphia PA 19103.

For nearly 20 years, PHOTOLounge's focus has been the simple idea that pictures should be beautiful, affordable, and long lasting. We're a very adept photo lab with diverse services from iPhone printing to shoebox scanning. You can bring us film for processing, and also order prints [online](#), or from the [App](#). Come in and print your world.

**Sketch Club Members receive a 15% discount at PHOTOLounge.
Use online promo code "sketch".**

267-322-6651 – www.myphotolounge.com

Gallery hours: Wednesday, Friday, Saturday, Sunday: 1 PM to 5 PM

January 2017

Support the Sketch Club

Sketch Club members receive 20% discount



Framing Family Treasures for over 20 Years



We offer a variety of framing materials and techniques including:

- Archival / conservation treatment • Specialty mats (Linen, Suede, Silk)
- Stretching / Blocking of needleart and oils
- 1000's of moulding choices • 22 karat finished corner frames • Memorabilia framing
- Custom toning / coloring • Decorative mat cuts • French matting • Fillets
- Mirrors • Shadowboxing • Dry Mounting

www.CanalFrame.com • CanalFrame@comcast.net • 215-493-3660

1093 General Greene Road, Washington Crossing, PA 18977

Like, Link & Share

If you're not following the Philadelphia Sketch Club on Facebook re-tweeting Sketch Club tweets yet, it's time that you did. We have well over 2000 Facebook followers. Get the word out about the Sketch Club. Please click the like button and share your comments and invite your friends to like our page.

Follow @PhilaSketchClub on Twitter, we have almost 400 followers. Please click the heart button and re-tweet our announcements.

Include links on your website, blogs and social media to The Philadelphia Sketch Club to increase traction across social media platforms.

Follow us on Facebook, Twitter and Instagram now!

Thanks to Don Brewer and Michelle Lockamy for managing PSC social media sites.



Gallery hours: Wednesday, Friday, Saturday, Sunday: 1 PM to 5 PM

January 2017

Membership

Not a PSC Member?: Join Now!

If you're reading this edition of the Portfolio and you're not a member of the PSC, you should consider joining the more than 200 other Philadelphia area artists who have. The PSC is one of the most active visual art venues serving center city Philadelphia. The PSC is a hands-on organization that offers its members the opportunity to participate in all aspects of creating and presenting work to the public. It presents over 20 scheduled group and solo exhibitions annually and offers a wide range of daily workshops. [Get info and an application here.](#)

If you are a member of the PSC, please feel free to share the Portfolio with your artist friends and encourage them to become members.

Membership Renewal

You can check the status of your membership by going to the Current Members page on the PSC web-site: <http://sketchclub.org/sample-page/memberspace/>. All current members are listed. An asterisk (*) means that the membership has expired but is within the 60-day grace period for renewal. Names in red are active links to the individual's web site.

Renew Now! <http://sketchclub.org/annual-dues-payment/>

If you have any questions about your membership, please don't hesitate contact us at membership@sketchclub.org or call the office: 215-545-9298.

New Member this Month

The Sketch Club welcomes new members recently approved by the Board of Directors.

- Joe Vescovich

Current Sketch Club members can review new member applications at: <http://sketchclub.org/member-applications/>. The members only section and documents are password protected. If you've forgotten the password, please contact Ken Weiner at: membership@sketchclub.org.

Gallery hours: Wednesday, Friday, Saturday, Sunday: 1 PM to 5 PM

January 2017

S

Sketch Club Activities

Check-out the Sketch Club Bulletin Board.



Recently, PSC members asked for some method of communicating between members of the PSC community. In response to this request, Board of Directors agreed to add a PSC Bulletin Board to the PSC web-site. You can visit and sign-up for this site at: <http://bbd.sketchclub.org/>.

You can also find the link on the PSC home page. Answers to questions about using the PSC BB are found on the Frequently Asked Questions (FAQ) page: [FAQs](#). The site is

monitored by **Ken Weiner**, PSC Vice-president.

Anyone can view entries on the site but you must register to post topics or responses. For starters, we've built-in several topics. We encourage the creation of new topics as needed.

Try it out. Enhance your creative life.

Gallery hours: Wednesday, Friday, Saturday, Sunday: 1 PM to 5 PM

January 2017

Sketch Club Activities

Critique Night

No Meeting in January

Next Meeting: February 15th, 2017

Open to PSC Members and Non-Members

RSVP to **Michelle Lockamy** at 215-545-9298 or
executivedirector@sketchclub.org

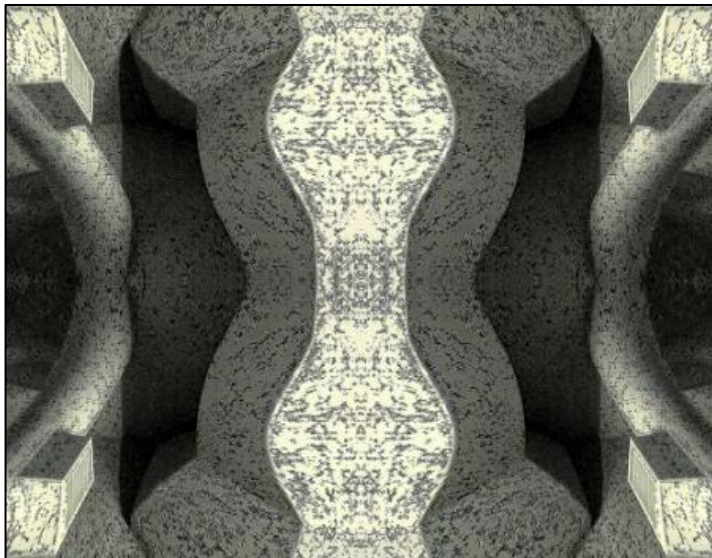
Critique Night is held in the Library of the Sketch Club every third Wednesday beginning at 7 PM. Bring work you've finished, work in progress, or just sketches for work you're planning! Photos, digital work, drawings, all mediums are welcome; we can project digital images on a screen for review, so you have the option to show work that may be too big or too heavy to transport to the Club. There is no one individual directing the critique, just your fellow artists and peers. Facilitated/monitored by **Rich Harrington**, PSC President



Photo Circle

No Meeting in January

Next Meeting: February 9th, 2017 from 6:30 to 8:30 PM



The Photo Circle meets every 2nd Thursday at 6:30 PM. You can contact Steve anytime at si22@drexel.edu or 215-300-9192 (cell). **Steve Iwanczuk**, Photo Circle Monitor and Member of Philadelphia Sketch Club Board of Directors.

Gallery hours: Wednesday, Friday, Saturday, Sunday: 1 PM to 5 PM

January 2017

Sketch Club Activities

Sketch Club Get-Together

Come, Hang-out with Other Artists at the Sketch Club Sunday January 22 from 1-4pm Bring a friend, make new friends play pool, draw/paint (still lifestyle ups in the gallery) EAT (bring a dish for Potluck!)

Snow Date February 12, 2017 from 1-4pm

Limited Edition PSC Glassware

We have a limited number of stemless wine glasses which have the Club logo on one side and the Club corporate seal on the reverse. We are offering these for sale at the price of \$15 for two glasses to members while the supply lasts. Place your order by emailing Michelle at executivedirector@sketchclub.org or calling 215-545-9298. Please indicate when you will pick-up and pay for the glasses your order.



Gallery hours: Wednesday, Friday, Saturday, Sunday: 1 PM to 5 PM

January 2017

Dinner Meeting

Dinner Meeting Friday, January 13th, 2017

Dinner and Presentation Open to the Public



Please RSVP to Michelle in the
PSC office by
12 Noon January 11, 2017

AGENDA

- 5:30- Social Period Begins
- 6:15- Speaker
- 7:15- Dinner



Guest Speaker

Bhaskar Gandavabi will present Introduction about LizenUp app and benefits for artists.

Artists/Curators can record audio stories that patrons can listen while they are browsing your gallery. Place a LizenUp smart tag next to an artwork, and record an audio story about it. With the LizenUp app, visitors can listen to stories for each artifact and provide valuable feedback by rating and commenting.

Your Benefits

- Increase your sales by creating rich content about the artwork you are showing
- Add value to the artwork by embedding stories along with the art
- Send messages and updates to patrons long after their visit thru the app
- Get accurate analytics on the most viewed, rated and shared artworks

Visitor Benefits

- Discover stories about any artifact by touching the LizenUp tags near them with a smart phone
- With Lizenup, listen to audio stories in any gallery with one single app
- Share stories and clips with friends and family

Easy as 1 - 2 - 3!

- Scan a Tag - QR or NFC
- Listen to stories about amazing works of art
- Rate and Comment on audio clips and artifacts



Contact LizenUp today and transform your visitors' experience.

LizenUp, Inc.
www.lizenup.com
862 432 6205
contact@lizenup.com





Gallery hours: Wednesday, Friday, Saturday, Sunday: 1 PM to 5 PM

January 2017

2016 Holiday Party

HELP WANTED FOR GRANTS

We're working on several projects that could help our Philadelphia Sketch Club enhance our success by serving our members better, as well as more practicing artists, and art lovers among Philadelphians and visitors to the city.

To do this, we need some help. We're seeking more financial backing from foundations in our area through the awarding of grants. This takes a big commitment in time and dedication.

If any of our members want to help and have experience in the process of grant writing, submission and the follow-through, please contact one of us by e-mail at executivedirector@sketchclub.org

Thank you.

Bill Kosman or Bill Patterson.

Gallery hours: Wednesday, Friday, Saturday, Sunday: 1 PM to 5 PM

January 2017

2016 Main Gallery Schedule

2017 Annual Domenic DiStefano Memorial Works on Paper Exhibition

- **January 6-28, 2017**
- Enter online: [Here...](#)
- See Prospectus [Works on Paper Prospectus 2017](#)
- **Entry Deadline: Sunday Dec 18, 2016 at Midnight**
- **Notification:** Dec 21, 2016
- **Delivery:** Weds Dec 28, and Friday. Dec. 30, 2016 1-5 PM
- **Reception: Sunday Jan 15, 2017 2-4 PM** where cash awards and PSC medal will be presented to the winners
- **Pickup:** Jan 29 and Feb 1, 2017
- **Chair : Lauren Sweeney** (ljsweeney1@verizon.net)



Faad Ghoraishi
PSC Exhibition Chair

Gallery hours: Wednesday, Friday, Saturday, Sunday: 1 PM to 5 PM

January 2017

2016 Main Gallery Schedule

Coming Next:

33rd Annual 2017 School District of
Philadelphia
and
the Philadelphia Sketch Club
Collaborating to provide the
HIGH SCHOOL ART SHOW

DATES: February 5-26, 2017

DELIVERY AND HANGING BY INVITED HS ART

TEACHERS: Wednesday, February 1, 2017, 3:00 –
6:00 PM

Thursday, February 2, 2017, 3:00 – 6:00 PM

Friday, February 3, 2017, 3:00 – 6:00 PM

RECEPTION, AWARDS AND TAKE DOWN: Sunday,
February 26, 2017

JUDGING FOR AWARDS: Wednesday, February
8, 2017

JUDGES:

- Deborah Klose, Director of Art Education, School District of Philadelphia
- Susan Rodriguez, Educator, Author of "Special Artist's Handbook," and others
- Josephine Viviani, Associate Professor, University of the Arts, and Professor, Moore College of Art and Design



The 33rd Annual
PHILADELPHIA SKETCH CLUB
HIGH SCHOOL ART SHOW
FEBRUARY 5-26, 2017

Gallery hours: Wednesday, Friday, Saturday, Sunday: 1 PM to 5 PM

January 2017

2016 Main Gallery Schedule

Hello PSC Members,

Once again it is time to start planning for the High School Art Show (2017). As usual, we will be asking our loyal generous members for tax deductible contributions for awards for the young artists' artwork. The same procedure is still in place. Please make your check out to the "Philadelphia Sketch Club", with a note in the lower left corner, "HS Art Show Award", and mail it or bring it to the PSC office, Michelle Lockamy, Executive Director. Her hours are Wed., and Fri, 11:00-5:00PM. Also, notify the amount of your award (s) to Dorothy Roschen, in person, by Phone (215 848 3257), or email (droschen@me.com). Any amount is gratefully needed and appreciated. We do like each awardee to receive at least \$ 25.00. To achieve this, we combine donors for one award and some donors give multiple awards. Every donor is recognized on a posted complete awards list in the gallery, which is also in the catalogue. (Award amounts are not posted.)

Deborah Klose, Director of Art Education, School District of Philadelphia, will send the call to entry letters to all School District High School Art Teachers. (no charter schools) Usually, about 25-30 teachers respond and they bring and hang 5 labeled pieces each from their classrooms.

To volunteer to help the Art Teachers hang the work on deliver days (Feb.1,2,3) let Dorothy know or to sign up-go to the "Volunteers" under the Membership tab on the PSC website. Food donations for the reception (Feb. 26) will be asked for closer to that date.

Thank you, Members, for your wonderful support for this show. It would be absolutely impossible without you.

Sincerely,

Dorothy Roschen, Chair, 2017 HS Art Show, (215 848 3257), <mailto:droschen@me.com>, and Committee

Deborah Klose, Director of Art Education, Office of Arts and Academic Enrichment, School District of Philadelphia

Gallery hours: Wednesday, Friday, Saturday, Sunday: 1 PM to 5 PM

January 2017

2016 Stuart Gallery Schedule

The Stuart Gallery is closed January 2017

Exhibition Schedule and Events Calendar Always Available at sketchclub.org

Don't forget, you can always see the schedule for the coming year on the PSC web-site. Go to the Calendars/Events menu and select Exhibition Schedule. Here's the link:

<http://sketchclub.org/exhibitions/>. And new for this year, we've added an Events Calendar under the Calendars/Events menu. This calendar will show a complete list of the dates for important activities and deadlines. See it here: <http://sketchclub.org/calendar/>

Gallery hours: Wednesday, Friday, Saturday, Sunday: 1 PM to 5 PM

January 2017

Sketch Club Open Workshop Schedule

All workshops are open to the public. There is no need to register before attending. You do NOT have to be a member of the Philadelphia Sketch Club to participate in the workshops. Our workshops are open to anyone who is interested in drawing, painting or printmaking. All skill levels are welcome. Fees: Model workshops: \$8/session members, \$9/session for non-PSC members; Printmaking workshop: \$10/session; All workshops \$6 for full-time students. Monitored by PSC members.

Life Model	Costumed Model	Printmaking
<p>Mondays – Extended pose (multi-session): 6:30 PM-9:30PM</p> <p>Monitors: Robert Bohne, Vince Docktor, Dan Kuetemeyer</p> <p>Tuesdays – Extended pose: 12:00 PM to 3:00 PM Monitor: Jacqueline Barnett</p> <p>Wednesdays – Extended pose: 6:30 to 9:30 PM Monitor: Vince Docktor</p> <p>Saturdays – Extended pose: 9:30 AM to 12:30 PM Monitor: Vince Docktor</p>	<p>Thursdays</p> <p>Extended pose</p> <p>12:00 PM to 3:00 PM Monitor: Bob Bohne.</p>	<p>Tuesdays</p> <p>10:00 AM to 2:00 PM Monitor: Elizabeth H. MacDonald</p>

Please Note: Those who use oil paints should bring their own container(s) to remove used solvents. Odorless solvents only.

Gallery hours: Wednesday, Friday, Saturday, Sunday: 1 PM to 5 PM

January 2017

Art Natters: Members News

PSC member, **Pamela Tudor** has a piece juried into the Small Sculpture Show at the City Hall Art Gallery. The show is on from January 16-February 24th. Opening reception is Wednesday, January 18, 5-7 pm, Office of Arts, Culture and the Creative Economy, Room 116. The piece, entitled *The Widow*, is below. It is made from recycled, repurposed materials, including a conch shell, old lace and feathers, stones and a Veuve Cliquot metal box.



The Widow

In 2017 PSC member, **Amanda Stevenson** will be teaching Portrait Photograph in-studio and on-location Master Class and Photograph Best Business Practices at Community College of Philadelphia. Open to all as current and continuing education students and professionals. Sign up today for a learning adventure that will give you the latest tools and skills to master your craft.

<http://ccp.edu/college-catalog/course-offerings/photographic-imaging-courses>

[PHOT 202 Commercial Photography - Portrait](#)

[PHOT 299 Professional Practices in Photographic Imaging and Digital Video Production](#)

Gallery hours: Wednesday, Friday, Saturday, Sunday: 1 PM to 5 PM

January 2017

Art Natters: Members News

PSC member, **Susan Barnes** received the First-Place Award for her monotype, "Old Man and the Fish", in the 2016 Small Works Show at the Medford Art Center, Medford, NJ. The show runs through January 7, 2017.



monotype Old Man & the Fish S. Barnes

Four of her monotypes are also in the Small Works Show at Church Street Art & Crafts in Mount Holly, NJ. She also did an oil painting demo for "Bankers and Brokers" event held at the Medford Art Center in December.

PSC member, **Ken Weiner** wil have a solo exhibition, Abstract Explorations, at the Center on the Hill in the Presbyterian Church of Chestnut Hill; 8855 Germantown Avenue; Philadelphia PA 19118. Feburary 1st through the 28th 2017. The Center is open to the public.

For information about the center and directions:

<http://www.chestnuthillpres.org/center-on-the-hill/>

Reception: To be announced



Festival

Gallery hours: Wednesday, Friday, Saturday, Sunday: 1 PM to 5 PM

January 2017

Art Natters: Members News

Aida Birritteri is recognized at the 47th Annual Juried Show of the Garden State Watercolor Society



Apples to Oranges

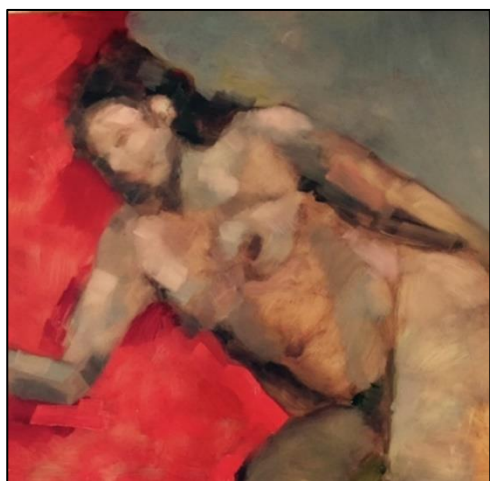
Aida Birritteri was proud and happy to be recognized for her work with watercolor by Vice President of the American Watercolor Society, Joel Popadic who was also the juror for the 47th Annual Garden State Watercolor Society Juried Show currently on display in the Ellarslie Mansion at the Trenton City Museum.

Aida Birritteri's still life watercolor, "Apples to Oranges," received a Merit Award with a gift certificate to Cheap Joe's Art Supplies at the show as well. Her watercolor SOLD at the reception, and Aida also became a signature member of the watercolor society during the reception.

This watercolor show runs from Saturday Nov. 19, 2016 to Sunday, January 15, 2017.

For more info about the GSWCS Show visit: www.gswcs.com or The Trenton City Museum at Ellarslie : www.ellarslie.com

Doris Peltzman has 2 paintings in the Professional Artist Members Exhibit, 2017 at the Main Line Art Center. The juror for this exhibit was Ross Mitchell, Director of the Barnes de Mazia Education and Outreach Programs for the Barnes Foundation. The opening reception will take place on January 13, 2017 at the Main Line Art Center in Haverford, P.A. In addition, Doris will have a Solo Exhibit in the Welcome Gallery of Main Line Art Center in March, 2017.



Amber



Carmine Roses

Gallery hours: Wednesday, Friday, Saturday, Sunday: 1 PM to 5 PM

January 2017

Hassan Paige recently sold "Kuomboka" at an auction via Arthouse-NG in Nigeria for ~\$2,200 USD. Medium: Pastel Chalk; Date: Work completed July 2, 2016; Dimension: 30"W x 22"H; Country of Origin: Zambia

This picture depicts the royal crossing of the Lozi people at the height of the annual flooding of the Zambezi River. The Lozi people have lived with the rise and fall of the Zambezi River for centuries, seeing their villages become waterlogged, then gradually submerged. It's believed they migrated to these flood plains from the Congo basin in the 17th century. Now they must move annually, at the whim of the Zambezi River, and wait for the king's signal.



Once the king gives his signal, the traditional ceremony called the "Kuomboka", which means "to get out of the water", begins. By ancient belief, the people can't leave their flooded villages before their king, for he must lead them to higher ground. The Kuomboka is when the king, his queen, and his people, leave the flooded grasslands.

The elephant represents the king, and for his queen, a graceful crane. The king's barge (in the center of the picture) is heavy, with over a 100 men paddling in stifling humidity. They paddle to the beat of royal drums that can be heard more than 9 miles away. The oldest drum is thought to have been cut from wood in 1816.

Artist Bio:

Born in 1970 in Philadelphia, Pennsylvania (US), Kalenga is an artist specializing in African works of art. Kalenga's love for African art started in his childhood, as his mother collected fine works of art, masks, and artifacts ever since he was a young child. He absorbed the acute attention to form associated with the African sculptures and other fine works of art in his mother's collection, subsequently developing his own visual and conceptual vocabulary that emerges through all of his artwork. Since he is fairly new to the world of fine art as an actual artist, Kalenga's work can only be found via his website (artofkalenga.com) or a handful of private art collections in the United States. He currently lives and works on the outskirts of the Greater Philadelphia area.

Gallery hours: Wednesday, Friday, Saturday, Sunday: 1 PM to 5 PM

January 2017

Art Natters: Members News

PSC member, **Idaherma Williams** was awarded the Anna Hyatt Huntington Bronze Medan given at the 102nd Annual Open show of The Catherine Wolfe art club for a work in graphic/mixed media at the National Arts club Gramercy Park south NYC, Nov 29

Merry Christmas and Holiday Greetings to All from PSC Member, **Brenda L Bechtel**! The National Oil and Acrylic Painters Society of America, NOAPS has included my Oil on Linen, "Tea with Henry at Three Winterthur" as one of 150 finalists chosen from 838 entries in the 2016 International Fall on-line Exhibition.

Catharine Lorillard Wolfe Art Club celebrated a Milestone 120th Juried Exhibition at the National Art Club in Manhattan, where Brenda received the Salmagundi Award for "Blue Skies Smiling at Me".



Whisper of Time

"Birdland" transparent watercolor is included in the Pennsylvania Watercolor Society Online Member Show which can be viewed at www.pawcs.com To learn more, visit: www.BrendaLBechtel.com

Cape Cod Museum of Art continues its Inaugural Juried Exhibition in Celebration of 35 years through January 29, 2017, "Memories of Infinitude" is one of 44 included pieces. Provincetown Art Museum Annual Member Salon continues through January 10, 2017 and includes "Saint Andrews Sunset Glow Hyannisport".

The PSC WOP 2017 includes Brenda's Transparent Watercolour, "West Barnstable Antiquity".



Windswept Beach Point

Gallery hours: Wednesday, Friday, Saturday, Sunday: 1 PM to 5 PM

January 2017

Calls for Work and Notices

Rosetta DeBerardinis, an established artist with a studio practice in Washington, DC has re-launched her body of Affordable Originals to introduce her work to new audiences. These original paintings are available in sizes from 2" x 2" to 9" x 7" on either stretched canvas or canvas panels. All work is created using archival materials, one-of-a-kind, signed and priced \$45 to \$350.

Additional info: RosettaGallery@aol.com or
www.RosettaDeBerardinis.com.



Serafina Harris submitted "The Social Butterfly's Formula". It's about my personal emergence in understanding the people around me and how it effects my daily life. Essentially insuring if I understand people at all or its opposite of nothing and how those separate but similar factors allow me to interact with people as well as I believe I do!



The Social Butterfly's Formula

Gallery hours: Wednesday, Friday, Saturday, Sunday: 1 PM to 5 PM

January 2017

Calls for Work and Notices

Or Hadash Staircase Gallery

Reconstructionist Congregation Or Hadash in Fort Washington, PA is housed in a historic building, formerly the summer mansion of well-known society families. We have adapted a formerly grand entrance staircase into what we call The Staircase Gallery.

The Staircase Gallery has been having 3 shows a year for over 14 years. We have had shows featuring a diverse group of painters, photographers, children's art, and illustrators. We have incorporated writings and travel logs into exhibits for multi-talented artists who work in multiple mediums.

We are always looking for local artists who would like to show their work. The application process is to simply let us know of your interest, sending us a link to a site where we can see your work. If the Gallery committee feels your work would work in our space, we will contact you to schedule a show. The school students pass through the gallery so we must consider what is appropriate viewing for them in our decision making process. Many artists make a list of prices available for sales. We provide assistance in the hanging of the show and let the artist know what supporting documents are typically displayed.

We are currently scheduling for the 2017 season and going forward. If you would like to have a show in our unique and charming gallery, please let us know at mikeoswald@comcast.net. We will start the process and let you know what the steps are if we go forward.

Gallery hours: Wednesday, Friday, Saturday, Sunday: 1 PM to 5 PM

January 2017

Calls for Work and Notices

Academy House Exhibition Opportunity

The Academy House art committee is now looking for pieces to display in our lobby starting sometime in April.

If any of your artists at the Philadelphia Sketch Club are interested, ask them to stop into the lobby (which now can be accessed only through 251 S. 15th Street) and look at the spaces currently being used. (The two pieces on the lobby level are smaller than we would prefer; the piece on the landing is an appropriate size.) If they think they have work that would be suitable for us, ask them to send photos and dimensions and we will take them up for consideration. Pieces displayed can be for sale, though the condo asks 20% of the selling price.

Photos can be emailed to this address or dropped off at the front desk with my name on the envelope.

Thanks,

Michael Goldman

academyhousearts@gmail.com

1425 Locust Street

Philadelphia, PA 19102

Gallery hours: Wednesday, Friday, Saturday, Sunday: 1 PM to 5 PM

January 2017

Calls for Work and Notices

Good Reads: Members Suggestions

From time-to-time, we receive suggestions for art-related material that we feel our members would find interesting.

This month, PSC member, **Patricia Ilves-Corressel** highly recommends the following links that provide in-depth information about Canadian artists comprising the Group of Seven.

- <http://www.arthistoryarchive.com/arthistory/canadian/The-Group-of-Seven.html>
- <http://www.northernontario.travel/group-of-seven/group-of-seven>
- <https://www.thestar.com/entertainment/visualarts/2016/07/01/this-lawren-harris-gossip-as-delicious-as-ever.html>
- <http://www.arthistoryarchive.com/arthistory/canadian/Lawren-Harris.html>

Emily Carr, may be the most famous Canadian woman painter, was later included into the group of seven. Here's a link: <http://www.arthistoryarchive.com/arthistory/canadian/Emily-Carr.html>

Something you find interesting that you want to share? Send it to portfolio@sketchclub.org to be included in the Portfolio

Member Classifieds

Photography Services for Artists

Do you need high-quality digital images of your work? Is glare a problem? Color balance not quite right? I can help you get great images of your 2-D or 3-D work suitable for digital file output or output for presentation and hard-copy presentation. I offer flexible availability, willingness to travel, special pricing for Sketch Club members. Contact: **Ken Weiner**

note2kenweiner@verizon.net; =
215-280-6325.

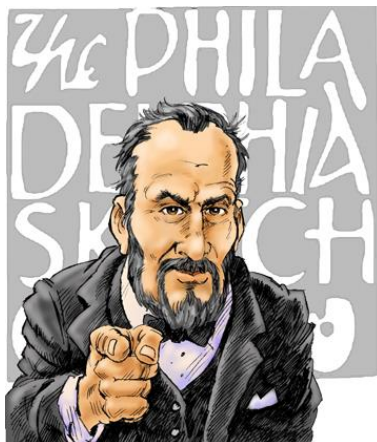
Seeking Framers

Sketch Club members frequently ask about framing services. If you wish to provide framing services to PSC members, please contact the PSC at info@sketchclub.org or call the PSC office: 215 545-92908

Gallery hours: Wednesday, Friday, Saturday, Sunday: 1 PM to 5 PM

January 2017

Call for Volunteers



We have important positions within the PSC that need volunteers to take over! Contact Faad Ghoraishi at to help out your club with future events.

The Portfolio: The newsletter of the Philadelphia Sketch Club is published monthly. Editor: Ken Weiner;
Technical support and Web Master: Ken Weiner

Send your member news, announcements and corrections to portfolio@sketchclub.org. The due date for all materials is one week before the end of the month.

Back issues of the Portfolio are available at: <http://sketchclub.org/portfolio-archive/>

The Philadelphia Sketch Club

235 S Camac Street
Philadelphia, PA 19107
(215) 545-9298
<http://sketchclub.org/>
executivedirector@sketchclub.org

Gallery Manager: Michelle Lockamy

Officers:

- President: Richard Harrington
- Vice President: Kenneth Weiner
- Secretary: Fran Carter
- Treasurer: William Patterson

Board of Directors

- Vincent Docktor
- Melanie Dion
- Stephen Iwanczuk
- William Kosman
- Kevin Myers
- Nancy H. Mills
- Brian Siegel
- Charles F. Tarr
- Joe Winter