

Gallery hours: Wednesday, Friday, Saturday, Sunday: 1 PM to 5 PM

December 2016



Rich Harrington

This Month's Portfolio

Support the Sketch Club	2
Membership	7
Sketch Club Activities	8
Dinner Meeting	10
2016 Holiday Party	10
2016 Main Gallery Schedule	11
2016 Stuart Gallery Schedule	13
Sketch Club Open Workshop Schedule	14
Art Natters: Members News	15
Calls for Work and Notices	24
Member Classifieds	29
Call for Volunteers	30

Send your member news, announcements and corrections to portfolio@sketchclub.org. The deadline for ALL submissions is 1-week before the end of the month.

Reminder: It's never too late. You can always renew your membership

You may pay online at

<http://sketchclub.org/annual-dues-payment/>

or mail your check to:

The Philadelphia Sketch Club

235 S. Camac St.

Philadelphia, PA 19107

For questions please contact the Gallery

Manager at 213335-545-9298 or email:

executivedirector@sketchclub.org

Late Breaking News – See items that were

submitted after the publication date. Go to:

info@sketchclub.org

The PSC general email is: [info@sketchclub](mailto:info@sketchclub.org)



Gallery hours: Wednesday, Friday, Saturday, Sunday: 1 PM to 5 PM

December 2016

Support the Sketch Club

235 SOUTH CAMAC STREET

telephone: (215) 545-9298



PHILADELPHIA, PA 19107

web site: www.sketchclub.org

HELP SUPPORT THE CLUB'S ANNUAL FUND DRIVE

Dear Fellow Sketch Club Members:

The Philadelphia Sketch Club is something we all value. Many rely on it as a place to show their artworks in juried or invitational exhibitions. Others enjoy coming to our historic building where they can meet other artists, share ideas, foster creativity and enjoy the camaraderie of fellow artists and art lovers. The educational aspects of the Club include the life, costumed model and print workshops as well as speakers at various events to include our monthly dinner meetings and just talking to other artists who share their experiences. Others value the historic significance of the Club and the prestige of belonging to an organization whose past members included many noted artists such as Eakins, Anshutz, N. C. Wyeth and Howard Chandler Christy.

While our membership dues and programs cover many of the Club's expenses, it is always a challenge to keep the Club financially healthy. We were fortunate in having a slight surplus last year (\$103 to be exact) and were in the black the prior two years. Prior to that we had significant deficits so we cannot let down our guard when it comes to supporting the Club financially.

To keep the Club financially healthy, we ask our members and friends to consider supporting our Club with a donation to our Annual Fund Drive. Any amount will be appreciated so please contribute what you can. As many of you know, the Philadelphia Sketch Club has been designated a 501(c)(3) non-profit organization by the Internal Revenue Service. As a result, your donation is fully tax deductible. Your consideration in this matter is greatly appreciated. Contributions can be mailed to the Club at Philadelphia Sketch Club, Attn: Annual Fund Drive, Philadelphia, PA 19107; made through PayPal or by calling 215-545-9298 if you wish to provide credit card information.

Best regards,

Richard A. Harrington
President

William C. Patterson
Treasurer

Visit our **Contribute** page of our website to give online at:
<http://sketchclub.org/support-us/>



Gallery hours: Wednesday, Friday, Saturday, Sunday: 1 PM to 5 PM

December 2016

Support the Sketch Club

Contribute

Please consider making your tax-deductible contribution now. These funds will be put to good use providing enhanced services to our members and friends.

Membership dues cover only a small portion of the PSC's operating expenses. Competition for funding for arts organizations like the Sketch Club is increasingly competitive and total funding for the arts is shrinking. Your additional support will keep the PSC an active support for visual artists in the Metropolitan Philadelphia area.

The Philadelphia Sketch Club is an IRS designated 501(c) (3) non-profit organization which allows your donations to be tax deductible.

You can call the office at 215-545-9298, mail checks to the Sketch Club or visit the Contribute page of our Website to give online at: <http://sketchclub.org/support-us/>

Contributors

This month, the PSC thanks **Gail Ferretti** and her husband **Howard Schaevitz** for their generous financial support to enable the club to replace the inadequate and failing refrigerator in the kitchen with a new 21 cubic foot GE refrigerator. This wonderful upgrade will enable the club to provide our membership and friends more varied refreshments and meals at PSC events.

Gallery hours: Wednesday, Friday, Saturday, Sunday: 1 PM to 5 PM

December 2016

Support the Sketch Club

Smile.Amazon.Com

Support the Sketch Club when you purchase from Amazon, use Amazon Smile
It costs you nothing and makes money for the PSC

The Sketch Club's AmazonSmile Link: <http://smile.amazon.com>

Thank you for your participation in the AmazonSmile program.

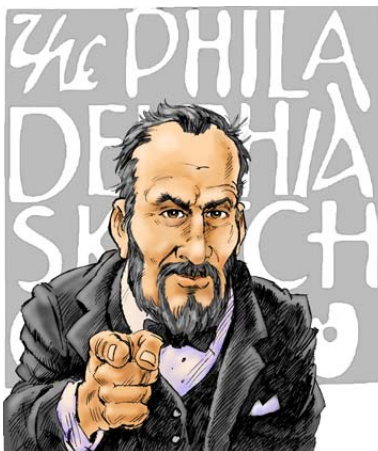
Purchases made by Sketch Club supporters using AmazonSmile in May resulted in a \$27.15 AmazonSmile contribution to the PSC. It's not much, but every cent helps. So don't forget, use the above link when purchasing from Amazon and increase the PSC's income.

What is AmazonSmile?

Amazon Smile is a simple and automatic way for you to support your favorite charitable organization every time you shop, at no cost to you. When you shop at smile.amazon.com, you'll find the exact same low prices, vast selection and convenient shopping experience as Amazon.com, with the added bonus that Amazon will donate a portion of the purchase price to your favorite charitable organization. You can choose from nearly one million organizations to support.

To learn more about AmazonSmile go to: <http://smile.amazon.com/gp/aw/ch/about>

Volunteers are **Always** needed!



We are now seeking a PSC member with great organizational skills to assist in managing the Member Dinner arrangements. If you want to get involved in this important PSC activity, please contact us ACAP at: executivedirector@sketchclub.org

Other volunteer opportunities:

- Gallery Sitting
- Accept/Return Work
- Special Projects
- Assist with Exhibition Tasks

Help the PSC with important positions within the PSC that need volunteers to take over! Contact [Faad Ghoraishi](#) at to help your club with future events

Gallery hours: Wednesday, Friday, Saturday, Sunday: 1 PM to 5 PM

December 2016

Support the Sketch Club



The **PHOTOLounge** supports the Philadelphia Sketch Club and its members:

**Sketch Club Members receive a 15% discount at PHOTOLounge.
Use online promo code "sketch".**

The PHOTOLounge is located at 1909 Chestnut St. Philadelphia PA 19103.

For nearly 20 years, PHOTOLounge's focus has been the simple idea that pictures should be beautiful, affordable, and long lasting. We're a very adept photo lab with diverse services from iPhone printing to shoebox scanning. You can bring us film for processing, and also order prints [online](#), or from the [App](#). Come in and print your world.

**Sketch Club Members receive a 15% discount at PHOTOLounge.
Use online promo code "sketch".**

267-322-6651 – www.myphotolounge.com

Gallery hours: Wednesday, Friday, Saturday, Sunday: 1 PM to 5 PM

December 2016

Support the Sketch Club

Sketch Club members receive 20% discount



Framing Family Treasures for over 20 Years



We offer a variety of framing materials and techniques including:

- Archival / conservation treatment • Specialty mats (Linen, Suede, Silk)
- Stretching / Blocking of needleart and oils
- 1000's of moulding choices • 22 karat finished corner frames • Memorabilia framing
- Custom toning / coloring • Decorative mat cuts • French matting • Fillets
- Mirrors • Shadowboxing • Dry Mounting

www.CanalFrame.com • CanalFrame@comcast.net • 215-493-3660

1093 General Greene Road, Washington Crossing, PA 18977

Like, Link & Share

If you're not following the Philadelphia Sketch Club on Facebook re-tweeting Sketch Club tweets yet, it's time that you did. We have well over 2000 Facebook followers. Get the word out about the Sketch Club. Please click the like button and share your comments and invite your friends to like our page.

Follow @PhilaSketchClub on Twitter, we have almost 400 followers. Please click the heart button and re-tweet our announcements.

Include links on your website, blogs and social media to The Philadelphia Sketch Club to increase traction across social media platforms.

Follow us on Facebook, Twitter and Instagram now!

Thanks to Don Brewer and Michelle Lockamy for managing PSC social media sites.



Gallery hours: Wednesday, Friday, Saturday, Sunday: 1 PM to 5 PM

December 2016

Membership

Not a PSC Member?: Join Now!

If you're reading this edition of the Portfolio and you're not a member of the PSC, you should consider joining the more than 200 other Philadelphia area artists who have. The PSC is one of the most active visual art venues serving center city Philadelphia. The PSC is a hands-on organization that offers its members the opportunity to participate in all aspects of creating and presenting work to the public. It presents over 20 scheduled group and solo exhibitions annually and offers a wide range of daily workshops. [Get info and an application here.](#)

If you are a member of the PSC, please feel free to share the Portfolio with your artist friends and encourage them to become members.

Membership Renewal

You can check the status of your membership by going to the Current Members page on the PSC web-site: <http://sketchclub.org/sample-page/memberspace/>. All current members are listed. An asterisk (*) means that the membership has expired but is within the 60-day grace period for renewal. Names in red are active links to the individual's web site.

Renew Now! <http://sketchclub.org/annual-dues-payment/>

If you have any questions about your membership, please don't hesitate contact us at membership@sketchclub.org or call the office: 215-545-9298.

New Member this Month

The Sketch Club welcomes new members recently approved by the Board of Directors.

- Rob Mooij

Current Sketch Club members can review new member applications at: <http://sketchclub.org/member-applications/>. The members only section and documents are password protected. If you've forgotten the password, please contact Ken Weiner at: membership@sketchclub.org.

Gallery hours: Wednesday, Friday, Saturday, Sunday: 1 PM to 5 PM

December 2016

S

Sketch Club Activities

Check-out the Sketch Club Bulletin Board.



Recently, PSC members asked for some method of communicating between members of the PSC community. In response to this request, Board of Directors agreed to add a PSC Bulletin Board to the PSC web-site. You can visit and sign-up for this site at: <http://bbd.sketchclub.org/>.

You can also find the link on the PSC home page. Answers to questions about using the PSC BB are found on the Frequently Asked Questions (FAQ) page: [FAQs](#). The site is

monitored by **Ken Weiner**, PSC Vice-president.

Anyone can view entries on the site but you must register to post topics or responses. For starters, we've built-in several topics. We encourage the creation of new topics as needed.

Try it out. Enhance your creative life.

Gallery hours: Wednesday, Friday, Saturday, Sunday: 1 PM to 5 PM

December 2016

Sketch Club Activities

Critique Night

Next Meeting: December 21st, 2016

Open to PSC Members and Non-Members

RSVP to **Michelle Lockamy** at 215-545-9298 or

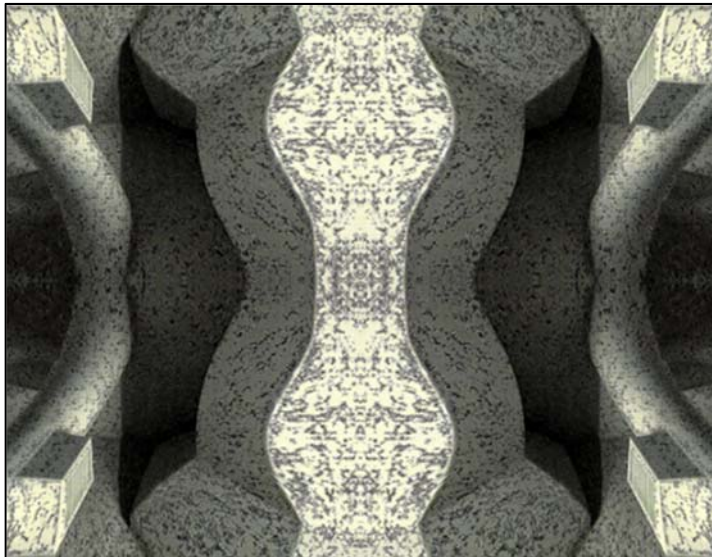
executivedirector@sketchclub.org

Critique Night is held in the Library of the Sketch Club every third Wednesday beginning at 7 PM. Bring work you've finished, work in progress, or just sketches for work you're planning! Photos, digital work, drawings, all mediums are welcome; we can project digital images on a screen for review, so you have the option to show work that may be too big or too heavy to transport to the Club. There is no one individual directing the critique, just your fellow artists and peers. Facilitated/monitored by **Rich Harrington**, PSC President



Photo Circle

Next Meeting: December 8th, 2016 from 6:30 to 8:30 PM



The Photo Circle meets every 2nd Thursday at 6:30 PM. You can contact Steve anytime at si22@drexel.edu or 215-300-9192 (cell). **Steve Iwanczuk**, Photo Circle Monitor and Member of Philadelphia Sketch Club Board of Directors.

Gallery hours: Wednesday, Friday, Saturday, Sunday: 1 PM to 5 PM

December 2016

Dinner Meeting

December Dinner Meeting

Cancelled! Plan to attend the Holiday Party.

2016 Holiday Party

The Philadelphia Sketch Club's Holiday Dinner Party

Hors d'oeuvres
Open Bar, and
Traditional
Turkey Dinner
at 3 PM

Open to
PSC
Members
and their
Guests



December 10th
1 'till 4 PM

\$25 per
person



Stewart
Room
space
lottery
at 2 PM

Annual Purity League Auction
and Legacy Show reception starts at 4:30 PM!

visit www.sketchclub.org or call 215.945.9298 for a reservation





Gallery hours: Wednesday, Friday, Saturday, Sunday: 1 PM to 5 PM

December 2016

2016 Main Gallery Schedule

The Annual Legacy Holiday Art Show & Sale

Art for Giving and Receiving

**The Annual
Legacy Holiday
Art Show & Sale**

Show Dates:
Dec. 9-17, 2016

**Holiday Dinner Meeting
& Sale: Saturday, Dec. 10**
1-4 PM (members only)

Reception: 4:30
Auction: 5-6
(open to the public)

Delivery: Dec. 4, 7, 1-5 PM Pickup: Dec. 18, 21, 1-5 PM

Also on the agenda for the Holiday Dinner Meeting is the selection of this year's recipient of the Purity League Award. Candidates for the Purity League award are individuals who have made a difference for the PSC. They must be current members of the PSC and must be in attendance at the Holiday Dinner. We look forward to passing on this traditional award to a deserving individual.

Gallery hours: Wednesday, Friday, Saturday, Sunday: 1 PM to 5 PM


December 2016

2016 Main Gallery Schedule

Coming Next

Call for Entry: Please join us for our next open juried show at the historic Philadelphia Sketch Club

2017 Annual Domenic DiStefano Memorial Works on Paper Exhibition

- **January 6-28, 2017**
 - Enter online: [Here...](#)
 - See Prospectus [Works on Paper Prospectus 2017](#)
 - **Entry Deadline: Sunday Dec 18, 2016 at Midnight**
- 
- **Notification:** Dec 21, 2016
 - **Delivery:** Weds Dec 28, and Friday. Dec. 30, 2016 1-5 PM
 - **Reception:** **Sunday Jan 15, 2017 2-4 PM** where cash awards and PSC medal will be presented to the winners
 - **Pickup:** Jan 29 and Feb 1, 2017
 - **Chair : Lauren Sweeney** (ljsweeney1@verizon.net)

Faad Ghoraishi
PSC Exhibition Chair

Gallery hours: Wednesday, Friday, Saturday, Sunday: 1 PM to 5 PM

December 2016

2016 Stuart Gallery Schedule

2016 PSC Volunteer Appreciation Exhibition

December 1 – 30, 2016

Reception to be determined

Exhibition Schedule and Events Calendar Always Available at sketchclub.org

Don't forget, you can always see the schedule for the coming year on the PSC web-site. Go to the Calendars/Events menu and select Exhibition Schedule. Here's the link:

<http://sketchclub.org/exhibitions/>. And new for this year, we've added an Events Calendar under the Calendars/Events menu. This calendar will show a complete list of the dates for important activities and deadlines. See it here: <http://sketchclub.org/calendar/>



Gallery hours: Wednesday, Friday, Saturday, Sunday: 1 PM to 5 PM

December 2016

Sketch Club Open Workshop Schedule

All workshops are open to the public. There is no need to register before attending. You do NOT have to be a member of the Philadelphia Sketch Club to participate in the workshops. Our workshops are open to anyone who is interested in drawing, painting or printmaking. All skill levels are welcome. Fees: Model workshops: \$8/session members, \$9/session for non-PSC members; Printmaking workshop: \$10/session; All workshops \$6 for full-time students. Monitored by PSC members.

Life Model	Costumed Model	Printmaking
<p>Mondays – Extended pose (multi-session): 6:30 PM-9:30PM</p> <p>Monitors: Robert Bohne, Vince Docktor, Dan Kuetemeyer</p> <p>Tuesdays – Extended pose: 12:00 PM to 3:00 PM Monitor: Jacqueline Barnett</p> <p>Wednesdays – Extended pose: 6:30 to 9:30 PM Monitor: Vince Docktor</p> <p>Saturdays – Extended pose: 9:30 AM to 12:30 PM Monitor: Vince Docktor</p>	<p>Thursdays</p> <p>Extended pose</p> <p>12:00 PM to 3:00 PM Monitor: Bob Bohne.</p>	<p>Tuesdays</p> <p>10:00 AM to 2:00 PM Monitor: Elizabeth H. MacDonald</p>

Please Note: Those who use oil paints should bring their own container(s) to remove used solvents. Odorless solvents only.

Gallery hours: Wednesday, Friday, Saturday, Sunday: 1 PM to 5 PM

December 2016

Art Natters: Members News

Donald A. Meyer's Egg Tempera Triptych on View at Michener Art Museum

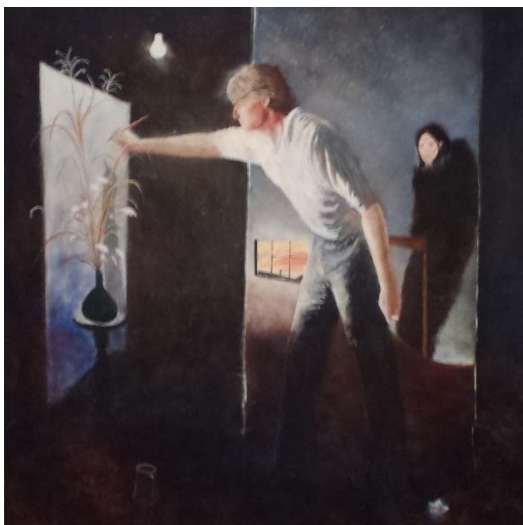


Donald Meyer (1945 - 2002) was a very active member of the Philadelphia Sketch Club. He joined the Club in 1996 and served for many years on the Board of Directors and as Vice President.

Some of his accomplishments as an artist included a solo exhibition at the Phillip & Muriel Berman Museum of Art at Ursinus College and serving as an artist in residence at the Masterworks Foundation in

Hamilton, Bermuda.

His work, *Exton Triptych*, 2002, is currently on view at the James A. Michener Art Museum in Doylestown, where it is in the museum's permanent collection. The overall size of the triptych is 78" x 234" and the medium is egg tempera on canvas. The work is shown in an extensive exhibition which includes works by contemporary artists such as Elizabeth Osborne and Diane Burko as well as historic works by artists such as Daniel Garber



Gallery hours: Wednesday, Friday, Saturday, Sunday: 1 PM to 5 PM

December 2016

Art Natters: Members News

Alice Chung has an exhibition with 6 other Korean artists from Nov. 16 to Dec. 16, 2016 at the Montgomery County Community College Art Center Gallery in Blue Bell (Central Campus).



Croatia

She is working as a president of the artists group: Philadelphia Arts Connection, established in 2010.

She is exhibiting 10 Pieces of Oil, Acrylic and Mixed media paintings

Reception is Nov. 30, 5PM - 7 PM



Yellowstone Park



PSC member, **Ben Cohen** was awarded HONORABLE MENTION at the 8th Annual BCAG Gisela Bly Art Show Burlington County Library , Westampton Nov 5 to Nov 30, 2016

PSC member, **Claire Lynch's** painting "East Falls Autumn" was accepted into the Scenes of the Schuylkill River's annual juried art show . The show runs until the 9th of December at Montgomery County College in Pottstown Pa.



Gallery hours: Wednesday, Friday, Saturday, Sunday: 1 PM to 5 PM

December 2016

Art Natters: Members News

From PSC member, **Bill Kosman**

I wanted to show you a new painting, "Hope at K & A."



Get the whole scoop and see the painting in its near-full size by clicking on the link below to access my Painter's Blog.


If you want to see the real painting by visiting my studio, just shoot me an e-mail (billkosman@gmail.com), and we'll make it happen.

Have a wonderful holiday!


Bill: www.williamkosman.blogspot.com

PSC member, **Susan Barnes** had two paintings accepted into the **7th Annual 6 x 6" Squared Exhibition and Sale** held at the **Randy Higbee Gallery** in Costa Mesa, California. Reception scheduled for December 3, 2016 from 6 to 9 pm. The show runs through the end of January.


The works can be viewed and purchases made online at <http://www.dailybrushwork.com/grid2.aspx?OJSID=8690&OID=13&GSID=1093>



randy higbee
GALLERY



Randy Higbee Gallery, once again, brings together almost 800 masterpiece works in the 6" squared format by over 300 artists gathered from around America.



6" Squared
Exhibition and Sale

Gala Reception
Dec. 3rd, 2016
[6 pm to 9 pm](#)

Gallery hours: Wednesday, Friday, Saturday, Sunday: 1 PM to 5 PM

December 2016

From PSC member
Alan Fetterman

General Colin Powell Presented With Alan
Fetterman Painting at Pearl S. Buck
International Luncheon



On Friday, October 14th, Pearl S. Buck International held its World Business and Cultural Luncheon where General Colin Powell was the keynote speaker. The event increased awareness of the integration of societies and how important healthy relationships between cultures are today.

Alan Fetterman was asked to create and present a painting specific to General Powell. The painting has four stars depicted in a night sky to symbolize a four-star general overseeing in protective fashion.

Along with the painting are the written words: *Created for General Colin Powell respectfully and in loft through the good work and extraordinary writings of Pearl S. Buck and the Pearl S. Buck Foundation.*

"Amongst the protective stars, a welcoming home awaits...Children East & West follow the light in night, awakening brightly to that of Christmas Day in the Morning."

General Powell called Alan up to the stage to pose along with him and his new painting. It was a most humbling day.

Gallery hours: Wednesday, Friday, Saturday, Sunday: 1 PM to 5 PM

December 2016

Art Natters: Members News

POETRY IN DOYLESTOWN

What: Open-house Poetry Session

Where: 41 East State Street, Doylestown PA

When: Sunday Dec 18, 2016 2 to 4PM

Bucks County artist and PSC member **Alan Fetterman** invites you to his pop-up gallery on



Sunday December 18, 2016 from 2 to 4 PM for an afternoon of poetry.

Alan Fetterman and PSC member, **Nancy H. Mills** will read their poetry followed by a welcome-poets open reading.

Please contact us if you plan to read so that we can introduce you properly and allow time for all.

Gallery: 41 East State Street Doylestown PA

Contact Nancyhmills@hotmail.com

ALAN FETTERMAN FINE ARTS

Gallery hours: Wednesday, Friday, Saturday, Sunday: 1 PM to 5 PM

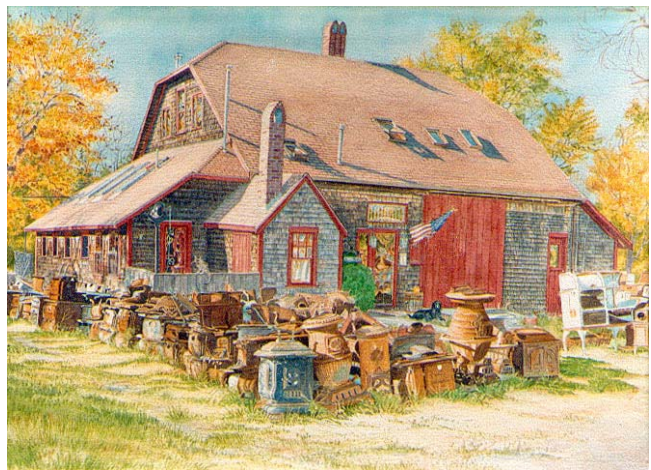
December 2016

Art Natters: Members News

Blessings and Happy Thanksgiving to All from PSC member, **Brenda Bechtel**! Please visit my recently launched, new website www.BrendaLBechtel.com. It is about time my name is my Art domain! Busy times for All Artists, so I thought I would throw my info into the mix before Holidaze distract. Happy to report "Memories of Infinitude" is one of 44 paintings included in the "Cape Cod Museum of Fine Art, Looking Ahead" First Annual Juried Member Exhibition Celebrating 35 Years, November 26, 2016 through January 29, 2017. Opening Reception December 1, 5:30 - 7 pm. Provincetown Art Association and Museum includes "St Andrew's Sunset Glow" Oil on Linen in the Annual Member Artist Salon, through January 10, 2017. Cotuit Center for the Arts includes "Birdland" Archival Giclee of original watercolour through December 30, 2016, Opening Reception December 3, 5 - 7pm. Also, happy to report, I have apparently achieved "Fellow" Designation in AAPL. So now I leave You with Blessings and wishes for Your Best Ever Holidaze!



Heading Out



West Barnstable Antiquity

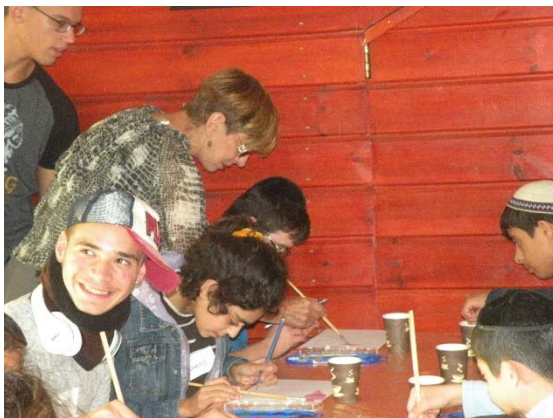
NJ artist and PSC member, **Mike Budden** recently won a few new awards from the American Artists Professional League. He received a new distinction of Fellow Maxima Cum Laude for which only 28 other artists in the world have met the requirements and he also won the Catherine Lorillard Wolfe Art Club Award for his painting Foggy Evening Brooklyn Bridge in the 88th Grand National Exhibition at the Salmagundi Club, NYC. Mike has been invited to exhibit at the Cooley Gallery "All Paintings Great and Small Holiday Exhibition" through January and his art work can be viewed at mikebudden.com.

Gallery hours: Wednesday, Friday, Saturday, Sunday: 1 PM to 5 PM

December 2016

Art Natters: Members News

PSC member, **Diane Hark** visited the SHALVA FOUNDATION FOR SPECIAL NEEDS CHILDREN IN JERUSALEM. This workshop was set up after many emails and dates and worked out great. The children loved it and, with the help of translators, they followed my directions with gusto. Ranging from ages 9-15, the 20 special needs kids had lots of fun.



Gallery hours: Wednesday, Friday, Saturday, Sunday: 1 PM to 5 PM

December 2016

Art Natters: Members News

PSC member, **Dino Sistilli** won the John Garbach Memorial Award for his oil painting, "Unloading", at the American Artists Professional League 88th Grand National Exhibition. The event was held at the Salmagundi Club in New York City on November 13th, 2016. Dino has been a fellow member of the AAPL since 2010.



PSC member, **Elizabeth Zack** has been invited to join the Gathering Art Gallery & Boutique at 65A W State St, Doylestown, PA 189 01. Her oil paintings will be on display starting January 2017. Gallery hours are Wednesday - Sunday 12-7 PM. Please do stop by.



Gallery hours: Wednesday, Friday, Saturday, Sunday: 1 PM to 5 PM

December 2016

Art Natters: Members News

PSC member, **Pam Tudor**, cordially invites all to a fine art and jewelry sale on the weekend of Dec 2-4th. Her paintings, works on paper, and digital pigmented prints will be on display, as well as beautiful African-inspired jewelry designed by her friend Marietou Fanny. Please mark your calendars!

Fine Art and Jewelry Sale

Enjoy and purchase unique pieces created by 2 local artists
whose work is exhibited and sold nationally!

The Atria, 150 North 20th Street, Philadelphia PA 19103

William Penn Room, lobby floor on the right

Dec 2-4, 2016

- Friday 6-9 pm December 2nd
- Saturday 11-5 pm December 3rd
- Sunday 12-4 pm December 4th



African-inspired jewelry - Marietou Fanny



Paintings and drawings - Pamela Tudor

Come and support local artists while enjoying light refreshments and
seeing great art!

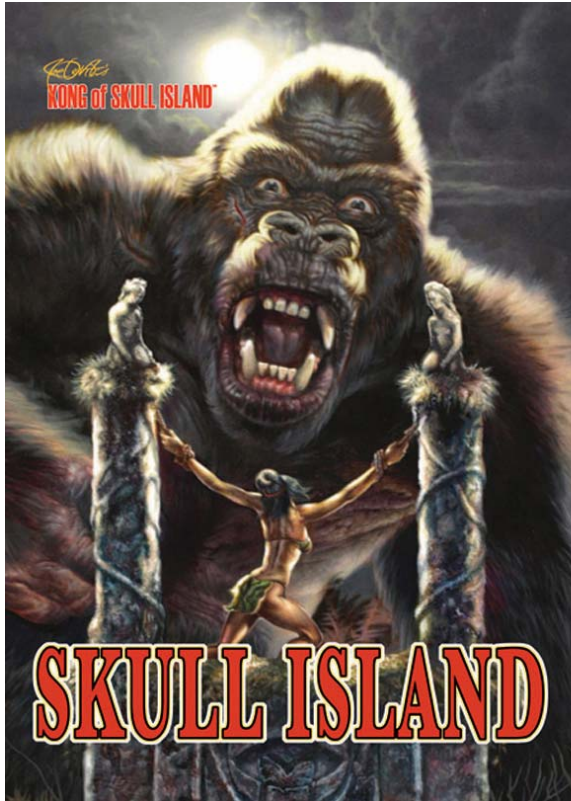
For more information, contact Marietou, 215 888 5954, or email Pamela,

pntudor10@gmail.com

Gallery hours: Wednesday, Friday, Saturday, Sunday: 1 PM to 5 PM

December 2016

Calls for Work and Notices



SKULL ISLAND

The sprawling new adventure novel written by Joe DeVito and Brad Strickland, with illustrations by Joe DeVito. It chronicles the origins of the Kongs, the ancient civilization called the Tagatu, and their fight to survive in the midst of Skull Island's prehistoric denizens, culminating in the epic building of the Great Wall. Untold mysteries surrounding Skull Island's enigmatic origins and its bizarre natural wonders are also revealed!

Skull Island is the first book in the exciting new series, "Kong of Skull Island."

Part of DeVito ArtWorks' unfolding universe, "King Kong of Skull Island", it joins the Cooper Estate's original storyline "Merian C. Cooper's King Kong" with DeVito's ground-breaking Kong of Skull Island origin story – the first and only creator-authorized expansion of the Skull Island mythos since Cooper created King Kong!

Watch For It Here:
Facebook: Kong of Skull Island
Facebook: DeVito ArtWorks
www.kongskullisland.com
www.jdevito.com



DeVito ArtWorks' unfolding universe, "King Kong of Skull Island", joins the Cooper Estate's original storyline "Merian C. Cooper's King Kong" with DeVito's ground-breaking Kong of Skull Island origin story – the first and only creator-authorized expansion of the Skull Island mythos since Cooper created King Kong!

"Skull Island", the sprawling new adventure novel written by Joe DeVito and Brad Strickland, with illustrations by Joe DeVito will be the first book in the exciting new series, "Kong of Skull Island." It chronicles the origins of the Kongs, the ancient civilization called the Tagatu, and their fight to survive in the midst of Skull Island's prehistoric denizens, culminating in the epic building of the Great Wall. Untold mysteries surrounding Skull Island's enigmatic origins and its bizarre natural wonders are also revealed!

Go here for all ongoing updates and information:

<https://www.facebook.com/KongOfSkullIsland/>

<http://www.kongskullisland.com/>

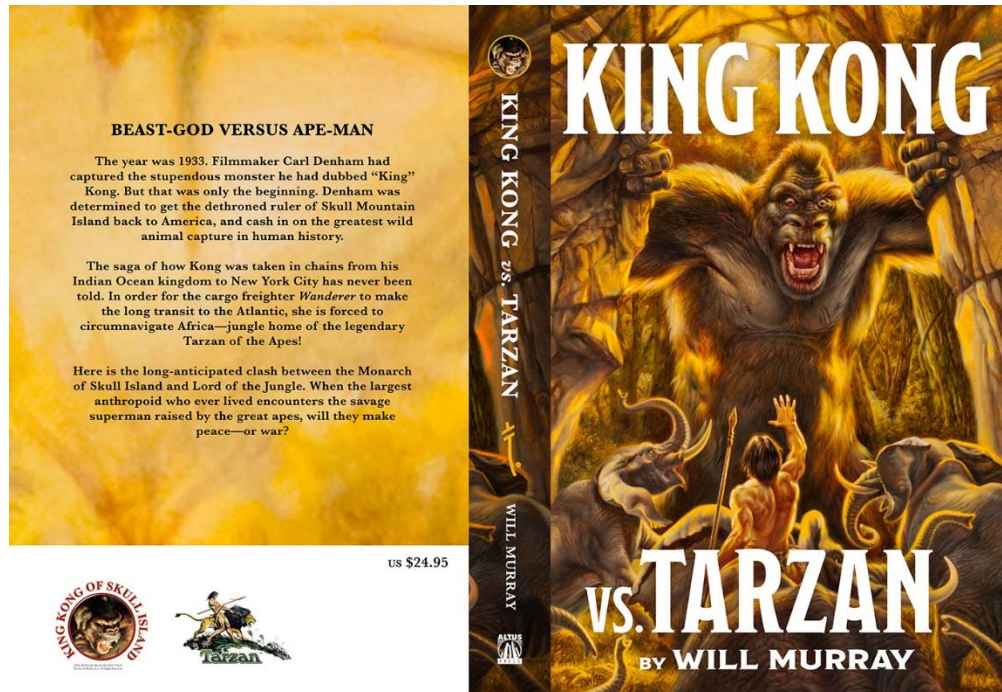
Gallery hours: Wednesday, Friday, Saturday, Sunday: 1 PM to 5 PM

December 2016

Calls for Work and Notices

King Kong vs Tarzan! Go here for all information on the first ever pairing of the two iconic characters in an authorized novel! Written by Will Murray, illustrated by Joe DeVito:

<https://www.facebook.com/WilliamPatrickMurray/>



HAPPY BIRTHDAY TO US!

It's been a glorious year so we're celebrating our very first anniversary in style.

Live musical performances by Philadelphia's own

Ladybird

Julia Levitina

Saturday, December 3, 2016

6:30PM - 9:30PM

Stanek Gallery
242 North 3rd Street
Philadelphia, PA. 19106

Space is limited so please click below to RSVP!

RSVP

Stanek Gallery | 215.908.3277 | info@stanekgallery.net | www.stanekgallery.com

Gallery hours: Wednesday, Friday, Saturday, Sunday: 1 PM to 5 PM

December 2016

Calls for Work and Notices



Here's a great opportunity to live with my work at affordable prices!!

Small original paintings by artist, **Rosetta DeBerardinis**, produced exclusively for the Noyes Museum Gift Shop which will become available for purchase from Saturday, November 12 thru December 30, 2016.

The Noyes Museum, 5 South Second Street, Hammonton, New Jersey; Tues, Wed, & Sat: 10-5 pm-Thurs.& Friday: 1-8 pm. Additional information: (609)-561-8006 or RosettaGallery@aol.com; www.RosettaDeBerardinis.com

Rosetta DeBerardinis
RosettaGallery@aol.com
www.RosettaDeBerardinis.com
202-803-2072 (Studio)

Gallery hours: Wednesday, Friday, Saturday, Sunday: 1 PM to 5 PM

December 2016

Calls for Work and Notices

Or Hadash Staircase Gallery

Reconstructionist Congregation Or Hadash in Fort Washington, PA is housed in a historic building, formerly the summer mansion of well-known society families. We have adapted a formerly grand entrance staircase into what we call The Staircase Gallery.

The Staircase Gallery has been having 3 shows a year for over 14 years. We have had shows featuring a diverse group of painters, photographers, children's art, and illustrators. We have incorporated writings and travel logs into exhibits for multi-talented artists who work in multiple mediums.

We are always looking for local artists who would like to show their work. The application process is to simply let us know of your interest, sending us a link to a site where we can see your work. If the Gallery committee feels your work would work in our space, we will contact you to schedule a show. The school students pass through the gallery so we must consider what is appropriate viewing for them in our decision making process. Many artists make a list of prices available for sales. We provide assistance in the hanging of the show and let the artist know what supporting documents are typically displayed.

We are currently scheduling for the 2017 season and going forward. If you would like to have a show in our unique and charming gallery, please let us know at mikeoswald@comcast.net. We will start the process and let you know what the steps are if we go forward.

The Moss Rehab Hospital Art Exhibit

The Moss Rehab Hospital art exhibit opening in Elkins Park, PA September 23 through November 4, 2016. The jurors were Ross Lance Mitchell, director of the Barnes Foundation in Philadelphia and Val Rossman who has been on the faculty of the Main Line Art Center for the past twenty years. To view and purchase art work from the All About Art at Moss Rehab artists, visit: <https://advance.einstein.edu/mossartsales>. For more information please visit <http://www.mossrehab.com/> or call 1-800-CALL MOSS.

Gallery hours: Wednesday, Friday, Saturday, Sunday: 1 PM to 5 PM

December 2016

Calls for Work and Notices

Academy House Exhibition Opportunity

The Academy House art committee is now looking for pieces to display in our lobby starting sometime in April.

If any of your artists at the Philadelphia Sketch Club are interested, ask them to stop into the lobby (which now can be accessed only through 251 S. 15th Street) and look at the spaces currently being used. (The two pieces on the lobby level are smaller than we would prefer; the piece on the landing is an appropriate size.) If they think they have work that would be suitable for us, ask them to send photos and dimensions and we will take them up for consideration. Pieces displayed can be for sale, though the condo asks 20% of the selling price.

Photos can be emailed to this address or dropped off at the front desk with my name on the envelope.

Thanks,

Michael Goldman

academyhousearts@gmail.com

1425 Locust Street

Philadelphia, PA 19102

Gallery hours: Wednesday, Friday, Saturday, Sunday: 1 PM to 5 PM

December 2016

Calls for Work and Notices

Good Reads: Members Suggestions

From time-to-time, we receive suggestions for art-related material that we feel our members would find interesting.

This month, PSC member, **Patricia Ilves-Corressel** highly recommends the following links that provide in-depth information about Canadian artists comprising the Group of Seven.

- <http://www.arthistoryarchive.com/arthistory/canadian/The-Group-of-Seven.html>
- <http://www.northernontario.travel/group-of-seven/group-of-seven>
- <https://www.thestar.com/entertainment/visualarts/2016/07/01/this-lawren-harris-gossip-as-delicious-as-ever.html>
- <http://www.arthistoryarchive.com/arthistory/canadian/Lawren-Harris.html>

Emily Carr, may be the most famous Canadian woman painter, was later included into the group of seven. Here's a link: <http://www.arthistoryarchive.com/arthistory/canadian/Emily-Carr.html>

Something you find interesting that you want to share? Send it to portfolio@sketchclub.org to be included in the Portfolio

Member Classifieds

Photography Services for Artists

Do you need high-quality digital images of your work? Is glare a problem? Color balance not quite right? I can help you get great images of your 2-D or 3-D work suitable for digital file output or output for presentation and hard-copy presentation. I offer flexible availability, willingness to travel, special pricing for Sketch Club members. Contact: **Ken Weiner**

note2kenweiner@verizon.net; =
215-280-6325.

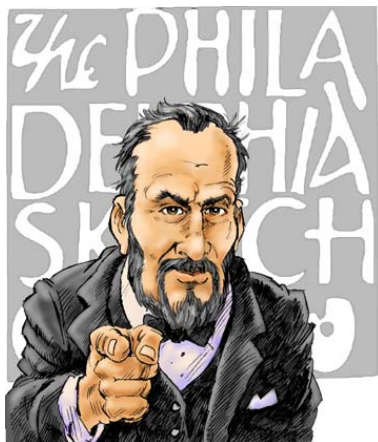
Seeking Framers

Sketch Club members frequently ask about framing services. If you wish to provide framing services to PSC members, please contact the PSC at info@sketchclub.org or call the PSC office: 215 545-92908

Gallery hours: Wednesday, Friday, Saturday, Sunday: 1 PM to 5 PM

December 2016

Call for Volunteers



We have important positions within the PSC that need volunteers to take over! Contact Faad Ghoraishi at to help out your club with future events.

The Portfolio: The newsletter of the Philadelphia Sketch Club is published monthly. Editor: Ken Weiner;
Technical support and Web Master: Ken Weiner

Send your member news, announcements and corrections to portfolio@sketchclub.org. The due date for all materials is one week before the end of the month.

Back issues of the Portfolio are available at: <http://sketchclub.org/portfolio-archive/>

The Philadelphia Sketch Club

235 S Camac Street
Philadelphia, PA 19107
(215) 545-9298
<http://sketchclub.org/>
executivedirector@sketchclub.org

Gallery Manager: Michelle Lockamy

Officers:

- President: Richard Harrington
- Vice President: Kenneth Weiner
- Secretary: Fran Carter
- Treasurer: William Patterson

Board of Directors

- Vincent Docktor
- Melanie Dion
- Stephen Iwanczuk
- William Kosman
- Kevin Myers
- Nancy H. Mills
- Brian Siegel
- Charles F. Tarr
- Joe Winter