

Gallery hours: Wednesday, Friday, Saturday, Sunday: 1 PM to 5 PM

April 2017



## This Month's Portfolio

Support the Sketch Club	2
Membership	5
Sketch Club Activities	6
Member Activities	12
Help Wanted	13
2016 Main Gallery Schedule	14
2016 Stuart Gallery Schedule	15
Sketch Club Open Workshop Schedule	16
Art Natters: Members News	17
Calls for Work and Notices	22
Member Classifieds	26
Call for Volunteers	27

Send your member news, announcements and corrections to [portfolio@sketchclub.org](mailto:portfolio@sketchclub.org). The deadline for ALL submissions is 1-week before the end of the month.

Reminder: It's never too late. You can always renew your membership

You may pay online at

<http://sketchclub.org/annual-dues-payment/>

or mail your check to:

The Philadelphia Sketch Club

235 S. Camac St.

Philadelphia, PA 19107

For questions please contact the Gallery

Manager at 213335-545-9298 or email:

[executivedirector@sketchclub.org](mailto:executivedirector@sketchclub.org)

Late Breaking News – See items that were

submitted after the publication date. Go to:

[info@sketchclub.org](mailto:info@sketchclub.org)

The PSC general email is: [info@sketchclub](mailto:info@sketchclub.org)

Gallery hours: Wednesday, Friday, Saturday, Sunday: 1 PM to 5 PM

April 2017

## Support the Sketch Club

### Contribute

Please consider making your tax-deductible contribution now. These funds will be put to good use providing enhanced services to our members and friends.

Membership dues cover only a small portion of the PSC's operating expenses. Competition for funding for arts organizations like the Sketch Club is increasingly competitive and total funding for the arts is shrinking. Your additional support will keep the PSC an active support for visual artists in the Metropolitan Philadelphia area.

The Philadelphia Sketch Club is an IRS designated 501(c) (3) non-profit organization which allows your donations to be tax deductible.

You can call the office at 215-545-9298, mail checks to the Sketch Club or visit the Contribute page of our Website.

Visit our **Contribute** page of our website to give online at:

<http://sketchclub.org/support-us/>

### Smile.Amazon.Com

Support the Sketch Club when you purchase from Amazon, use Amazon Smile  
**It costs you nothing and makes money for the PSC**

The Sketch Club's AmazonSmile Link: <http://smile.amazon.com>

Thank you for your participation in the AmazonSmile program.

Purchases made by Sketch Club supporters using AmazonSmile in May resulted in a \$27.15 AmazonSmile contribution to the PSC. It's not much, but every cent helps. So don't forget, use the above link when purchasing from Amazon and increase the PSC's income.

### What is AmazonSmile?

Amazon Smile is a simple and automatic way for you to support your favorite charitable organization every time you shop, at no cost to you. When you shop at smile.amazon.com, you'll find the exact same low prices, vast selection and convenient shopping experience as Amazon.com, with the added bonus that Amazon will donate a portion of the purchase price to your favorite charitable organization. You can choose from nearly one million organizations to support.

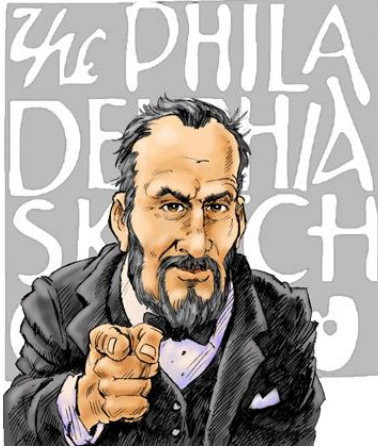
To learn more about Amazon Smile go to: <http://smile.amazon.com/gp/aw/ch/about>

Gallery hours: Wednesday, Friday, Saturday, Sunday: 1 PM to 5 PM

April 2017

## Support the Sketch Club

### Volunteers are **Always** needed!



We are now seeking a PSC member with great organizational skills to assist in managing the Member Dinner arrangements. If you want to get involved in this important PSC activity, please contact us ACAP at: [executivedirector@sketchclub.org](mailto:executivedirector@sketchclub.org)

Other volunteer opportunities:

- Gallery Sitting
- Accept/Return Work
- Special Projects
- Assist with Exhibition Tasks

Help the PSC with important positions within the PSC that need volunteers to take over! Contact [Faad Ghoraishi](#) at to help your club with future events

### PSC request for VOLUNTEERS for outdoor concrete work and carpentry

The Board has decided to do an improvement project this summer to concrete the floor in our Garden Shed and to repair the shed door. We are asking for Volunteers to do this project in-house.

Mutually agreed upon weekends will be arranged, first for the concrete work and a second weekend for the repair of the shed door.

Please email the Club at [executivedirector@sketchclub.org](mailto:executivedirector@sketchclub.org) or telephone us at 215-545-9298 leaving your name and a phone number where you can be reached.

Refreshments will be served!

The Garden Committee has been doing a superb job in planting and maintaining the grounds in the courtyard. The renovation of the Garden Shed will be a major improvement for all of us to enjoy.

I would very much appreciate your help.

Chuck Tarr,  
House Chair

Gallery hours: Wednesday, Friday, Saturday, Sunday: 1 PM to 5 PM

April 2017

## Support the Sketch Club

### PHOTOLounge

The PHOTOLounge supports the Philadelphia Sketch Club and its members:

**Sketch Club Members receive a 15% discount at PHOTOLounge.**

**Use online promo code "sketch".**

The PHOTOLounge is located at 1909 Chestnut St. Philadelphia PA 19103.

For nearly 20 years, PHOTOLounge's focus has been the simple idea that pictures should be beautiful, affordable, and long lasting. We're a very adept photo lab with diverse services from iPhone printing to shoebox scanning. You can bring us film for processing, and also order prints online, or from the App. Come in and print your world.

**Sketch Club Members receive a 15% discount at PHOTOLounge.**

**Use online promo code "sketch".**

**267-322-6651 – [www.myphotolounge.com](http://www.myphotolounge.com)**

## Sketch Club members receive 20% discount




**We offer a variety of framing materials and techniques including:**

- Archival / conservation treatment • Specialty mats (Linen, Suede, Silk)
- Stretching / Blocking of needleart and oils
- 1000's of moulding choices • 22 karat finished corner frames • Memorabilia framing
- Custom toning / coloring • Decorative mat cuts • French matting • Fillets
- Mirrors • Shadowboxing • Dry Mounting

[www.CanalFrame.com](http://www.CanalFrame.com) • [CanalFrame@comcast.net](mailto:CanalFrame@comcast.net) • 215-493-3660

1093 General Greene Road, Washington Crossing, PA 18977

Framing Family Treasures for over 20 Years





Gallery hours: Wednesday, Friday, Saturday, Sunday: 1 PM to 5 PM

April 2017

## Support the Sketch Club

### Like, Link & Share

If you're not following the Philadelphia Sketch Club on Facebook re-tweeting Sketch Club tweets yet, it's time that you did. We have well over 2000 Facebook followers. Get the word out about the Sketch Club. Please click the like button and share your comments and invite your friends to like our page.

Follow @PhilaSketchClub on Twitter, we have almost 400 followers. Please click the heart button and re-tweet our announcements.

Include links on your website, blogs and social media to The Philadelphia Sketch Club to increase traction across social media platforms.

Follow us on Facebook, Twitter and Instagram now!

Thanks to Don Brewer and Michelle Lockamy for managing PSC social media sites.



## Membership

### Not a PSC Member?: Join Now!

If you're reading this edition of the Portfolio and you're not a member of the PSC, you should consider joining the more than 200 other Philadelphia area artists who have. The PSC is one of the most active visual art venues serving center city Philadelphia. The PSC is a hands-on organization that offers its members the opportunity to participate in all aspects of creating and presenting work to the public. It presents over 20 scheduled group and solo exhibitions annually and offers a wide range of daily workshops. [Get info and an application here.](#)

If you are a member of the PSC, please feel free to share the Portfolio with your artist friends and encourage them to become members.

### Membership Renewal

You can check the status of your membership by going to the Current Members page on the PSC web-site: <http://sketchclub.org/sample-page/memberspace/>. All current members are listed. An asterisk (\*) means that the membership has expired but is within the 60-day grace period for renewal. Names in red are active links to the individual's web site.

Renew Now! <http://sketchclub.org/annual-dues-payment/>

**If you have any questions about your membership, please don't hesitate contact us at [membership@sketchclub.org](mailto:membership@sketchclub.org) or call the office: 215-545-9298.**

Gallery hours: Wednesday, Friday, Saturday, Sunday: 1 PM to 5 PM

April 2017

## Sketch Club Activities

Sketch Club Bulletin Board: **No longer available**



In September 2016, in response to member suggestions, we added a bulletin board where PSC members could share information related to their artistic endeavors.

Since then, there has been no member activity on the site. However, the BBoard has attracted a great deal of spam and unrelated and unwanted activity. Managing the BBoard is time consuming and costly.

Due to all of the above, the Bboard is no longer available.

Gallery hours: Wednesday, Friday, Saturday, Sunday: 1 PM to 5 PM

April 2017

## Sketch Club Activities

### Internships at the Philadelphia Sketch Club

Working towards a career in the art gallery world? Art history nerd? Budding illustrator? Our summer internships provide qualified applicants with the opportunity to learn what it is like behind the scenes of running an art gallery. The Philadelphia Sketch Club is a unique employer that holds rotating exhibitions, educates artists through our weekly life drawing and printmaking workshops, and guards the history of Philadelphia's artistic culture.



Interning for the Sketch Club is like taking a trip through time. The echo of history can be found in the character of our building, our extensive library, in the exhibitions we run (our Small Oils Show has been held every year since 1865, thank you very much), and in the voices of past prominent members like Thomas Eakins, Thomas Anshutz, and N. C. Wyeth.

As an intern of the PSC, you will be working with our Gallery Manager to coordinate exhibitions, build upon our social media presence, and engage with PSC members. You will also have the opportunity to assist our Workshop Monitors while practicing life drawing and printmaking.

### Qualifications

- Studying for a degree in Graphic Design, Illustration, or a related field
- Experience with the Adobe Suite or Creative Cloud
- Experience with Microsoft Office
- Savvy with social media
- Knowledge of CiviCRM a plus
- Knowledge of WordPress a plus
- Interns will be responsible for bringing their own devices to work on



### To Apply

We host most of our internships in the summer, but you are welcome to apply year-round. Send your résumé, a brief cover letter, and work samples to our Gallery Manager, Michelle Lockamy, at [executivedirector@sketchclub.org](mailto:executivedirector@sketchclub.org) with "Internship" in the subject line.

Thank you for your interest in the Philadelphia Sketch Club!

Gallery hours: Wednesday, Friday, Saturday, Sunday: 1 PM to 5 PM

April 2017

## Sketch Club Activities

### Critique Night

**Next Meeting: April 19th, 2017**

**Open to PSC Members and Non-Members**

RSVP to **Michelle Lockamy** at 215-545-9298 or

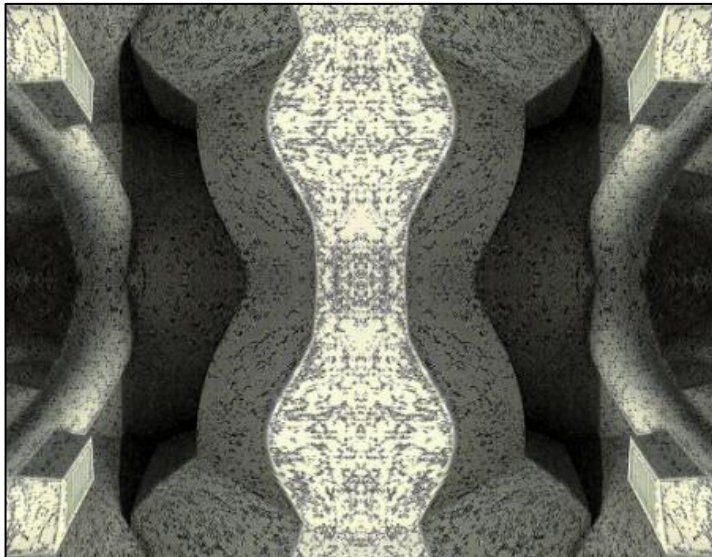
[executivedirector@sketchclub.org](mailto:executivedirector@sketchclub.org)

Critique Night is held in the Library of the Sketch Club every third Wednesday beginning at 7 PM. Bring work you've finished, work in progress, or just sketches for work you're planning! Photos, digital work, drawings, all mediums are welcome; we can project digital images on a screen for review, so you have the option to show work that may be too big or too heavy to transport to the Club. There is no one individual directing the critique, just your fellow artists and peers. Facilitated/monitored by **Rich Harrington**, PSC President



### Photo Circle

**Next Meeting: April 13th, 2017 from 6:30 to 8:30 PM**



The Photo Circle meets every 2<sup>nd</sup> Thursday at 6:30 PM. You can contact Steve anytime at [si22@drexel.edu](mailto:si22@drexel.edu) or 215-300-9192 (cell). **Steve Iwanczuk**, Photo Circle Monitor and Member of Philadelphia Sketch Club Board of Directors.



Gallery hours: Wednesday, Friday, Saturday, Sunday: 1 PM to 5 PM

April 2017

## Sketch Club Activities

### Key Circle Volunteers

**Key Circle Volunteers:** Alice Chung, Wayne Franks, Faad Ghoraishi, Donald Kuetemeyer, Katy Lin, Marilee Morris, Rosa Kim Paik, Lauren Sweeney, Gail Williams

#### The story behind the “Key Circle” volunteer group

There are many types of volunteer activities that are essential to maintaining the Sketch Club as a vibrant art club and showcase for outstanding art. For the last year a small group of member volunteers dubbed the “Key Circle” has been working to help the Club be reliably open during scheduled weekend gallery hours, as well as drop-off and pick-up sessions, jurying sessions, etc. – all the background work that goes into putting on each show.

We are dubbed the “Key Circle” because each of us has direct access to open the club. This also means that one of our 8-member group should be signed up for each session so the other volunteers can be assured of access. Equally importantly, Key Circle members quickly become more familiar with many aspects of Sketch Club functioning – and thus more comfortable handling all manner of situations.

This past year, over 50 total volunteers staffed the galleries on weekends, drop-off and pick-up events. Even though many volunteered just a few times during the year, those numbers added up to fully staffed shows for much of the year, at least until the busy fall season. It would make all the difference going forward if the Key Circle group could be expanded from its current 8 members to 12 or more, and if we could gain a modest increase in volunteering from the group of 50 volunteers, or add a few more volunteers. Perhaps members could add a volunteer session for every show in which they get a work accepted. Then invite your friends and colleagues to visit the club when you are there. Just a thought!

If you are now curious about joining the key circle, or just interested in becoming more knowledgeable about how to do certain things as a regular volunteer, the next time you volunteer ask your Key Circle partner to explain things more fully. Are you mystified by what to do if someone inquires about buying a work of art when no one is there to open the office? How to turn up the thermostat? How to buzz a visitor in? No one learns these things overnight, or just from reading a set of instructions. (However, there is a detailed lime-green Volunteer notebook in the hall outside the office that contains all sorts of useful information about the club.) For those who are considering stepping it up a notch to become a key circle member, consider that volunteering event your first “training session” to become a key circle person.

To get more information, please contact a Key Circle member at [info@sketchclub.org](mailto:info@sketchclub.org)



**GALLERY  
OPEN**

*Admission is Free*



Gallery hours: Wednesday, Friday, Saturday, Sunday: 1 PM to 5 PM

April 2017

## Sketch Club Activities

### Notes from the Archives – Medalists at the Sketch Club

Over its long existence, the Philadelphia Sketch Club has had members who worked in diverse mediums. There were many prominent sculptors but this short article is going to focus on a particular type of sculptor known as a medalist.

Most of us are familiar with the work of R. Tait McKenzie whose medal of an artist strongly striding toward his easel has been awarded as the top prize in the Sketch Club's annual small oils exhibition since 1921. McKenzie was known as the sculptor of athletes. A number of his medallions and medals were used as awards in or to commemorate sporting events. His medallion of three hurdlers titled *The Joy of Effort* was awarded a prize at the 1912 Olympic Games in Stockholm and is installed in the stadium there. His medals were also used at the Penn Relays.

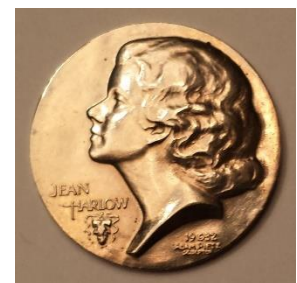
McKenzie's work with medals groups him with other Club artists who produced medals and coins. George T. Morgan was a member from 1877 until his death in 1925 and served as Chief Engraver of the U.S. Mint from 1917 to 1925. Morgan was a prolific designer of coins and medals and is best known for his Liberty head "Morgan silver dollar." Through Thomas Eakins, Morgan was introduced to Anna Williams, a Philadelphia schoolteacher who he used as his model for Liberty.



R. Tait McKenzie, Portrait  
Medallion of John R. Sinnock,  
1936, bronze, 9.5"

Morgan was succeeded as Chief Engraver of the U.S. Mint by John R. Sinnock, another Sketch Club member, who held that position from 1925 to 1947. Sinnock was the designer of the Roosevelt dime and Franklin half-dollar as well as numerous commemorative medals. Later, Club member Frank Gasparro would become Chief Engraver of the U.S. Mint from 1965 to 1981. He designed both sides of the Susan B. Anthony and Eisenhower dollars, the Lincoln Memorial on the reverse of the one cent coin and the reverse of the Kennedy half-dollar.

Gasparro was particularly proud of his work on the Lincoln penny, and when new acquaintances would discover his was an artist and ask to see his work, he loved to reply "It's in your pocket." Adam Pietz was another member who worked as an engraver at the U.S. Mint. He was made Assistant Engraver in 1927 and held that position for twenty years. He engraved many commemorative and foreign coins. He also did portrait plaques of artistic leaders and movie stars. His plaques of Thomas Anshutz and Joseph Pennell are on permanent display at the Sketch Club. For this group of sculptors and medalists we repeat the quotation "the bust outlasts the throne, the coin, Tiberius."



R. Tait McKenzie, Portrait  
Coin of Jean Harlow, 1932,  
silver, 1.125"

Gallery hours: Wednesday, Friday, Saturday, Sunday: 1 PM to 5 PM

April 2017

## Sketch Club Activities

### Limited Edition PSC Glassware

We have a limited number of stemless wine glasses which have the Club logo on one side and the Club corporate seal on the reverse. We are offering these for sale at the price of \$15 for two glasses to members while the supply lasts. Place your order by emailing Michelle at [executivedirector@sketchclub.org](mailto:executivedirector@sketchclub.org) or calling 215-545-9298. Please indicate when you will pick-up and pay for the glasses your order.



Gallery hours: Wednesday, Friday, Saturday, Sunday: 1 PM to 5 PM

April 2017

## Member Activities

### Dinner Meeting Friday April 14th, 2017

**Dinner and Presentation Open to the Public**  
**Please RSVP to Michelle in the PSC office by 12 Noon**  
**Friday April 14th, 2017**

#### AGENDA

- 5:30- Social Period Begins
- 6:15- Speaker
- 7:15- Dinner

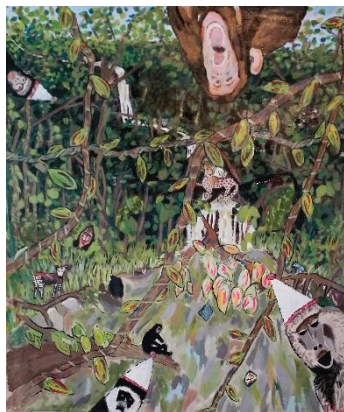
#### DINNER

- Members - \$16
- Guests - \$18



### Guest Speaker: Tracy Landmann

Tracey will discuss the use of art as a tool to stimulate cognitive development, focusing on a trio of murals she created for UD GoBabyGo!. The purpose of GoBabyGo!, an international program headquartered at the University of Delaware, is to provide independent transportation opportunities for young, mobility-impaired children, who are otherwise dependent on others for movement from a fixed position.



Welcome to the JP

The program's goals include: enriching social interaction with the toddler's peer group, providing possibilities for exploration of previously inaccessible items, and otherwise allowing for greatly enhanced sensory perception. Here, Tracey used her art abilities in order to broaden the cognitive development power of GoBabyGo! by stimulating imagination, providing a sense of control, and encouraging minds to consider alternative scenarios, therefore helping to prepare the children involved for existence in a challenging society. She is of the strong

belief that mental and physical development can be used to nourish one another.



Buddy's Reef



Vincent on Safari



Gallery hours: Wednesday, Friday, Saturday, Sunday: 1 PM to 5 PM

April 2017

## Member Activities

**April Open House & Pot Luck: Sunday April 30th**  
Plan to be at the PSC members April get-together.

Still Life/Plein Air Painting

- Food – (Jackie is preparing Slavic fare)
- 12:00 – 3:00 PM still life/plein air painting and drawing
- 3:30 – 5:00 PM music
- Cash Bar
- Bring a Friend, Fee=Pay what you wish



## Help Wanted

### HELP WANTED FOR GRANTS

We're working on several projects that could help our Philadelphia Sketch Club enhance our success by serving our members better, as well as more practicing artists, and art lovers among Philadelphians and visitors to the city.

To do this, we need some help. We're seeking more financial backing from foundations in our area through the awarding of grants. This takes a big commitment in time and dedication.

If any of our members want to help and have experience in the process of grant writing, submission and the follow-through, please contact one of us by e-mail at [executivedirector@sketchclub.org](mailto:executivedirector@sketchclub.org)

Thank you.

Bill Kosman or Bill Patterson.

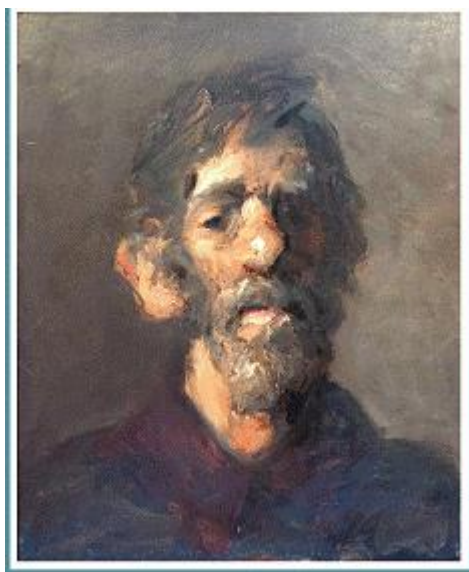
Gallery hours: Wednesday, Friday, Saturday, Sunday: 1 PM to 5 PM

April 2017

## 2016 Main Gallery Schedule

### The Philadelphia Sketch Club's 154th Annual Exhibition of Small Oil Paintings April 14 through May 6

**Reception on April 23 from 2 to 4 PM.** The exhibition features over 150 works by prominent and emerging artists. The exhibition awards are not just certificates and cash, but also the R. Tait McKenzie Small Oils Medal. Dr. McKenzie was an artist who created Olympic medals but he was also a physician who developed many of the modern theories of physical therapy. He designed a medal specifically for this exhibition. In addition to the best three in show awards, there will also be special awards for the best landscape, still life, portrait and abstract. Traditionally, the exhibition also features a work by each of the three jurors. This year's Jurors are Robert Goodman, Aubrey Levinthal and Stefanie Lieberman. Gallery hours at the Philadelphia Sketch Club, 235 S. Camac St., are Wednesday, Friday, Saturday & Sunday from 1 to 5 PM.



Tom Kohlman, *Portrait of Morales*, oil. First Award - 2016 Small Oils Show

Founded in 1860, the Sketch Club is America's oldest artists club. Originally, the show was founded so that artists could display a number of small examples of their works with the hope that a patron would order a larger painting. The size limitation on the paintings is no larger than 20" x 20" excluding frame. Prior medal winners in this exhibition have included Paulette Van Roekens, John Folinsbee, Alice Kent Stoddard, Arthur Meltzer, Antonio Martino, Dorothy Van Loan, Doris Silk, John Redmond and Al Gury



R. Tait McKenzie, Small Oils Medal, 3" dia. bronze

### Next in the Main Gallery: The 2017 Workshop Show\*

From May 19 to June 3, 2017 Closed non-juried show Chair: Jacqueline Barnett

- Delivery: May 12, 13, 2017 1-5 PM
- Reception: Sunday May 28, 2017 2-4 PM
- Pickup: June 4, 7, 2017

\*Open exclusively to PSC workshop participants.



Gallery hours: Wednesday, Friday, Saturday, Sunday: 1 PM to 5 PM

April 2017

## 2016 Stuart Gallery Schedule

PSC 2016 Winners Show: April 1<sup>st</sup> – 30<sup>th</sup>

### Exhibition Schedule and Events Calendar Always Available at [sketchclub.org](http://sketchclub.org)

Don't forget, you can always see the schedule for the coming year on the PSC web-site. Go to the Calendars/Events menu and select Exhibition Schedule. Here's the link:

<http://sketchclub.org/exhibitions/>. And new for this year, we've added an Events Calendar under the Calendars/Events menu. This calendar will show a complete list of the dates for important activities and deadlines. See it here: <http://sketchclub.org/calendar/>



Gallery hours: Wednesday, Friday, Saturday, Sunday: 1 PM to 5 PM

April 2017

## Sketch Club Open Workshop Schedule

All workshops are open to the public. There is no need to register before attending. You do NOT have to be a member of the Philadelphia Sketch Club to participate in the workshops. Our workshops are open to anyone who is interested in drawing, painting or printmaking. All skill levels are welcome. Fees: Model workshops: \$8/session members, \$9/session for non-PSC members; Printmaking workshop: \$10/session; All workshops \$6 for full-time students. Monitored by PSC members.

Life Model	Costumed Model	Printmaking
<p>Mondays – Extended pose (multi-session): 6:30 PM-9:30PM</p> <p>Monitors: Robert Bohne, Vince Docktor, Dan Kuetemeyer</p> <p>Tuesdays – Extended pose: 12:00 PM to 3:00 PM Monitor: Jacqueline Barnett</p> <p>Wednesdays – Extended pose: 6:30 to 9:30 PM Monitor: Vince Docktor</p> <p>Saturdays – Extended pose: 9:30 AM to 12:30 PM Monitor: Vince Docktor</p>	<p>Thursdays</p> <p>Extended pose</p> <p>12:00 PM to 3:00 PM Monitor: Bob Bohne.</p>	<p>Tuesdays</p> <p>10:00 AM to 2:00 PM Monitor: Elizabeth H. MacDonald</p>

**Please Note: Those who use oil paints should bring their own container(s) to remove used solvents. Odorless solvents only.**



Gallery hours: Wednesday, Friday, Saturday, Sunday: 1 PM to 5 PM

April 2017

## Art Natters: Members News

Sketch Club member, **Alice K. Chung** has an exhibition at The Phoenix Village Art Center for Artist Equity Juried Exhibition 2017 (31 works accepted of the 150 submitted ).

Opening Reception:  
April 7 and April 14 ( 6 to 8 PM )

At:

207 Bridge St, Phoenixville, PA



Waiting

Sketch Club member **Diane Hark** is teaching multiple classes at senior Rehab facilities and nursing homes. Diane has been asked to give a watercolor workshop at the Wayne senior center for six weeks starting April 11.

All are welcome

PSC member **Gus V. Sermas** is part of a three man show at the Chester County Art Association 100 N. Bradford Ave. WC, PA 19382 March 17 - April 13, 2017

Doug is exhibiting paintings from his Persephone series.

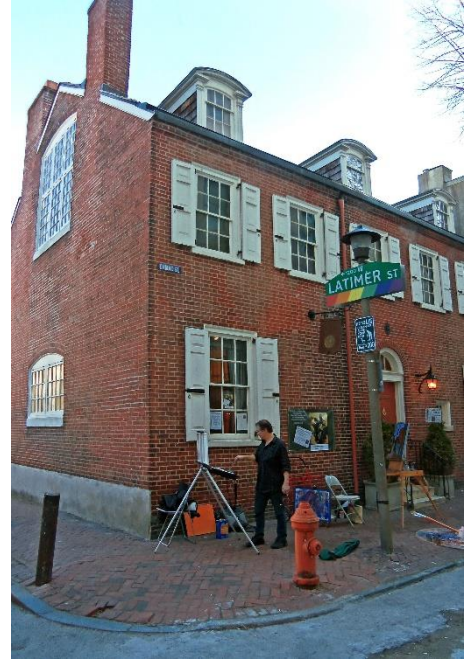


Gallery hours: Wednesday, Friday, Saturday, Sunday: 1 PM to 5 PM

April 2017

## Art Natters: Members News

Sketch Club board president **Rich Harrington** documents Bob Bohne's Plien Air group painting outside of the PSC during the mid-March spring false-alarm.



PSC member **Robert Hansen**, from Philadelphia, will be the featured speaker in the Artsbridge Distinguished Artists' Series on April 20, 2017 at 7 PM at Prawls Mill in Stockton NJ.



**Momentary Escape**

The Mill is on NJ Rt 29 about one mile north of the intersection with Bridge St. Hansen will give a presentation on "Why and How I Paint" illustrated with numerous images of his abstract paintings. The talk is open to the public.

Gallery hours: Wednesday, Friday, Saturday, Sunday: 1 PM to 5 PM

April 2017

## Art Natters: Members News

In 1962, Abram Engelman walked into an antiques shop in Asheville, NC and fell in love with a dark, evocative forest landscape painting, artist unknown. Despite the lack of provenance, Engelman bought the painting for \$640.

Over the next 55 years, the painting followed Engelman from NC to MA to NH and ME, until painting and owner landed in Baltimore, MD. Over the years, it sustained some damage, as well as wear and tear. In late 2016, Engelman met with an art restoration expert, Perette Manz-Henrich, an East German native with traditional training in her native country. Manz-Henrich went to work on the painting and frame, and in the process, discovered the artist who painted the beautiful work:

Frederick Wagner, 1860-1940, PAFA student who was Thomas Eakins' teaching assistant, and who also was a longtime member of the Philadelphia Sketch Club. Two of his paintings were featured in PSC's 150th Anniversary exhibition. He was known as a member of the Pennsylvania Impressionists group.



The beautifully restored painting recently found a new home, with PSC member **Joellyn Ross**, PAFA continuing education student, and "significant other" of Abram Engelman. We don't know how it traveled from PA to NC. It may have been in a show at the Carnegie Institute. Mysteries remain.

PSC member, **Pete Quarracino** has been invited to participate in the 2017 Historic Yellow Springs Art Show

The show runs April 29 to May 14, 10AM -4PM

1685 Art School Rd  
Chester Springs, PA19425



**Voodoo Wind**



Gallery hours: Wednesday, Friday, Saturday, Sunday: 1 PM to 5 PM

April 2017

## Art Natters: Members News

PSC member **Susan Barnes** had three monotypes accepted into the Works on Paper 2017 show at the Medford Art Center and received Honorable Mention for "Birds at Shoreline". Two of her oil paintings were included in the Community Art Show at Chairville school in Medford. Each of the schools' students, in art class, created their own work of art based on one of the pieces on display.

A gelatin monotype demo was done by Susan at the art reception for both children and their parents. The children enjoyed trying the process and were able to take the prints they made home.

She had two oil paintings accepted into the 154th Annual Exhibition of Small Oil Paintings Open Juried Show at the Philadelphia Sketch Club, 325 S. Camac St., Philadelphia, PA. Reception scheduled for Sunday, April 23 from 2 to 4 PM. Show dates April 14 to May 6, 2017.



Birds at Shoreline

PSC member **Doug Smock** has a solo show May to June 15 2017 at Gravers Lane Gallery in Chestnut Hill.



1



Painting



Jewelry



Fiber



Glass



Gallery hours: Wednesday, Friday, Saturday, Sunday: 1 PM to 5 PM

April 2017

## Art Natters: Members News

PSC member **Joseph Sweeney** will have a number of pieces in *Philadelphia Rowing: Breaking Barriers* at the Independent Seaport Museum. The show runs until October 9th. <http://phillyseaport.org/breakingbarriers>

Joseph is also doing a plain air workshops in Key West and Cape For more information go to :<https://www.pafa.org/courses/plein-air-painting-cape-may-new-jersey>

## Paint Key West

June 26 to June 30 2017



Paint Key West in plein air June 26 to June 30 2017. In the Summer of 2017, I have the good fortune to be awarded a residency at the Studios of Key West. The residency starts in Mid June 2017 and runs for one month. I am offering a Plein Air Painting class for mainland painters on the forth week in June. Dates: June 26 to June 30 2017.

Price \$400.

Key West is a beautiful island, every view is paintable. We will be based at the Studios of Key West on Eaton Street. There are numerous Bed and Breakfasts nearby.

We will paint early morning and late afternoon.

Anyone interested in painting Plein Air in Key West should contact me at

([joesweeney5@gmail.com](mailto:joesweeney5@gmail.com)) Thank You, Joseph Sweeney



Gallery hours: Wednesday, Friday, Saturday, Sunday: 1 PM to 5 PM

April 2017

## Calls for Work and Notices

**Kirby Fredendall** has been working for the winter on a series of drawings in graphite, gouache, oil, and oil pastel on paper. They are small and intimate and many will be the inspiration for larger images in the upcoming months. My work will be on view at the Main Line Art Center in Media, Pa for their upcoming Spring Gala 2017 in May. See [www.mainlineart.org](http://www.mainlineart.org) for details."



Spring Shoreline

### Ellarslie Open 34 Juried Exhibit Awards and Prizes in 10 Categories



Sheila Grabarsky, *Orange Segment*, 2016 Douglas H. Palmer  
Award for Best in Show Overall

#### On Display

May 6, 2017 – June 25, 2017

#### New Jersey's Premier Annual Juried Show

Over the years, the Ellarslie Open has become a significant exhibition, drawing on the work of professional artists from the tri-state region and beyond, while encouraging and recognizing emerging artists. Today, the Ellarslie Open serves as New Jersey's premier annual juried exhibit, with acceptance into the show being highly coveted by area artists. 2016 broke all records for submissions and accepted pieces. From these, the juror created a show together a show with a remarkably diverse aesthetic, including styles from abstract expressionism to Delaware Valley impressionist landscapes to painterly detailed still lifes to Cubism and more.

#### Lora S. Urbanelli, Juror

#### Director, Montclair Art Museum

Lora Urbanelli joined the Montclair Art Museum as Director in January 2009, assuming artistic direction at a moment of great excitement, as MAM celebrated its 95<sup>th</sup> year with the exhibition, *Cezanne and American Modernism*. Now post-Centennial celebrations, she is leading the staff and Board in refining the mission and relevance of the Museum, increasing an emphasis on art education, developing a contemporary art program, increasing audience access, and defining community service. Urbanelli came to Montclair from the Farnsworth Art Museum in Rockland, Maine, where she increased fundraising efforts and the professional staff, strengthened community relations, and led a successful strategic planning process. Before her arrival at the Farnsworth, she served as the Interim Director of the Museum of Art, Rhode Island School of Design, where she had previously been its Assistant Director and Curator of Prints, Drawings, and Photographs. She has an MFA in Museum Studies and Art History from Syracuse University and a BA, *magna cum laude*, in Studio Art from Rutgers University.

#### Calendar:

#### Posting of accepted work on [www.ellarslie.org](http://www.ellarslie.org)

By Friday, March 24, 2017

#### Opening reception at Ellarslie

Friday, May 5, 2017, 6-8 pm

VIP Night, Announcement of Awards

Saturday, May 6, 2017, 6 – 8 pm – General Public

#### Gallery Talk

Sunday May 21, 2017, 2 pm

Award winners discuss their work with the public



#### Museum Hours

Wednesday - Saturday: Noon to 4PM

Sunday: 1 to 4 PM

Closed Monday, Tuesday and  
Municipal Holidays

#### Trenton City Museum

The Trenton City Museum  
Ellarslie in Cadwalader Park  
Trenton, New Jersey

Phone: (609) 989-3632

Fax: (609) 989-3624

Email: [info@ellarslie.org](mailto:info@ellarslie.org)

Gallery hours: Wednesday, Friday, Saturday, Sunday: 1 PM to 5 PM

April 2017

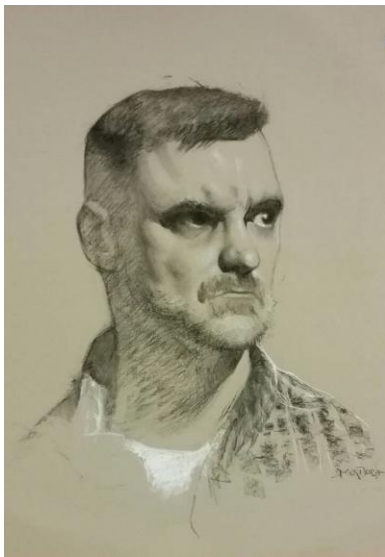
## Calls for Work and Notices

### Next All Day Portrait Model Session April 8th at Bucks County Classical Arts Center.

Draw or paint from the live costumed portrait model in a single pose all day for 6 hours of model time! Next day is Saturday April 8th. Each session is 10am- 4:30pm with a half hour lunch break from 1-1:30.

See a video of our last session! <https://youtu.be/zgOn8zvLREw>

Next sessions are posted online for May 6th, June 17th, July 1st, August 26th.



Andy

- \*\$30 per session
- \*Pre-enrolled participants get first pick of spaces.
- \*One price for all day.
- \*No instruction but moderated

Sessions are held at Bucks County Classical Arts Center located at St Martin of Tours School building in room 205. There is free parking! Address is 1 Riverstone Circle, New Hope, PA, 18938.

Register online via paypal or by sending a check with your name and the day you would like to attend to BCCAC, PO Box 144, New Hope, 18938. Contact John Murdoch with any questions, 267-221-6046, [minfo@murdochart.com](mailto:minfo@murdochart.com).

<http://www.buckscountyclassicalartscenter.org/art-class-enrollment.html>

"Andy" by John Murdoch, charcoal on grey paper with white highlight chalk. Drawing is from the portrait session.



Gallery hours: Wednesday, Friday, Saturday, Sunday: 1 PM to 5 PM

April 2017

## Calls for Work and Notices

### **360 XOCHI QUETZAL DEADLINE: July 30, 2017**

#### ***Free Winter Artist & Writer's Residency in Central Mexico***



**360 XOCHI QUETZAL** is an artist and writer's residency located on enchanting Lake Chapala, Mexico. International writers, playwrights, visual artists, fiber artists, filmmakers, photographers, new media artists, dancers and musicians are all welcome to apply for a **Free 1-month residency from Dec 14, 2017 - Jan 13, 2018.**

**Winter applications are due July 30, 2017** thru  
CAFÉ [www.callforentry.org](http://www.callforentry.org)

**We also have a personal residency program** for artists and writers who need longer periods of creative time (1 - 6 months) or who prefer other times of the year. For more information visit:  
[www.360xochiquetzal.com/personal-residency-overview/](http://www.360xochiquetzal.com/personal-residency-overview/)

**Visit our new website:** [www.360xochiquetzal.com](http://www.360xochiquetzal.com)

**Join and Like** our 360 Xochi Quetzal Group Facebook page [360XochiQuetzal](https://www.facebook.com/360XochiQuetzal) (lots of pictures!)

**Follow us** on Twitter: [@360XochiQuetzal](https://twitter.com/360XochiQuetzal)



Gallery hours: Wednesday, Friday, Saturday, Sunday: 1 PM to 5 PM

April 2017

## Calls for Work and Notices

### Or Hadash Staircase Gallery

Reconstructionist Congregation Or Hadash in Fort Washington, PA is housed in a historic building, formerly the summer mansion of well-known society families. We have adapted a formerly grand entrance staircase into what we call The Staircase Gallery.

The Staircase Gallery has been having 3 shows a year for over 14 years. We have had shows featuring a diverse group of painters, photographers, children's art, and illustrators. We have incorporated writings and travel logs into exhibits for multi-talented artists who work in multiple mediums.

We are always looking for local artists who would like to show their work. The application process is to simply let us know of your interest, sending us a link to a site where we can see your work. If the Gallery committee feels your work would work in our space, we will contact you to schedule a show. The school students pass through the gallery so we must consider what is appropriate viewing for them in our decision making process. Many artists make a list of prices available for sales. We provide assistance in the hanging of the show and let the artist know what supporting documents are typically displayed.

We are currently scheduling for the 2017 season and going forward. If you would like to have a show in our unique and charming gallery, please let us know at [mikeoswald@comcast.net](mailto:mikeoswald@comcast.net). We will start the process and let you know what the steps are if we go forward.

### Academy House Exhibition Opportunity

The Academy House art committee is now looking for pieces to display in our lobby starting sometime in April 2017.

If any of your artists at the Philadelphia Sketch Club are interested, ask them to stop into the lobby (which now can be accessed only through 251 S. 15th Street) and look at the spaces currently being used. (The two pieces on the lobby level are smaller than we would prefer; the piece on the landing is an appropriate size.) If they think they have work that would be suitable for us, ask them to send photos and dimensions and we will take them up for consideration. Pieces displayed can be for sale, though the condo asks 20% of the selling price.

Photos can be emailed to this address or dropped off at the front desk with my name on the envelope.

Thanks,  
Michael Goldman  
[academyhousearts@gmail.com](mailto:academyhousearts@gmail.com)  
1425 Locust Street  
Philadelphia, PA 19102

Gallery hours: Wednesday, Friday, Saturday, Sunday: 1 PM to 5 PM

April 2017

## Calls for Work and Notices

### Good Reads: Members Suggestions

Do you have a favorite? Share it with other PSC members here. Send your info to the [portfolio@sketchclub.org](mailto:portfolio@sketchclub.org).

This month, PSC member, **Patricia Ilves-Corressel** highly recommends the following links that provide in-depth information about Canadian artists comprising the Group of Seven.

- <http://www.arthistoryarchive.com/arthistory/canadian/The-Group-of-Seven.html>
- <http://www.northernontario.travel/group-of-seven/group-of-seven>
- <https://www.thestar.com/entertainment/visualarts/2016/07/01/this-lawren-harris-gossip-as-delicious-as-ever.html>
- <http://www.arthistoryarchive.com/arthistory/canadian/Lawren-Harris.html>

Emily Carr, may be the most famous Canadian woman painter, was later included into the group of seven. Here's a link: <http://www.arthistoryarchive.com/arthistory/canadian/Emily-Carr.html>

Something you find interesting that you want to share? Send it to [portfolio@sketchclub.org](mailto:portfolio@sketchclub.org) to be included in the Portfolio

## Member Classifieds

### Photography Services for Artists

Do you need high-quality digital images of your work? Is glare a problem? Color balance not quite right? I can help you get great images of your 2-D or 3-D work suitable for digital file output or output for presentation and hard-copy presentation. I offer flexible availability, willingness to travel, special pricing for Sketch Club members.

Contact PSC member **Ken Weiner** at [info@sketchclub.org](mailto:info@sketchclub.org).

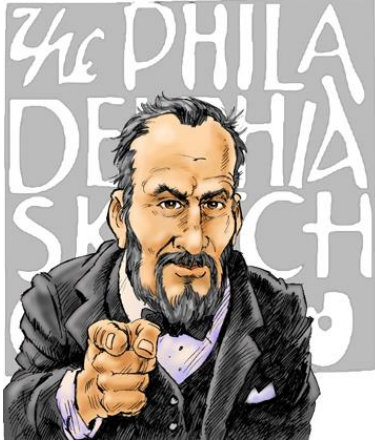
### Seeking Framers

Sketch Club members frequently ask about framing services. If you wish to provide framing services to PSC members, please contact the PSC at [info@sketchclub.org](mailto:info@sketchclub.org) or call the PSC office: 215 545-92908

Gallery hours: Wednesday, Friday, Saturday, Sunday: 1 PM to 5 PM

April 2017

## Call for Volunteers



We have important positions within the PSC that need volunteers to take over! Contact Faad Ghoraishi at to help out your club with future events.

The Portfolio: The newsletter of the Philadelphia Sketch Club is published monthly. Editor: Ken Weiner;

Technical support and Web Master: Ken Weiner

Send your member news, announcements and corrections to [portfolio@sketchclub.org](mailto:portfolio@sketchclub.org). The due date for all materials is one week before the end of the month.

Back issues of the Portfolio are available at: <http://sketchclub.org/portfolio-archive/>

### The Philadelphia Sketch Club

235 S Camac Street  
Philadelphia, PA 19107  
(215) 545-9298  
<http://sketchclub.org/>  
[executivedirector@sketchclub.org](mailto:executivedirector@sketchclub.org)

Gallery Manager: Michelle Lockamy

#### Officers:

- President: Richard Harrington
- Vice President: Kenneth Weiner
- Secretary: Fran Carter
- Treasurer: William Patterson

#### Board of Directors

- Vincent Docktor
- Melanie Dion
- Stephen Iwanczuk
- William Kosman
- Kevin Myers
- Nancy H. Mills
- Brian Siegel
- Charles F. Tarr
- Joe Winter