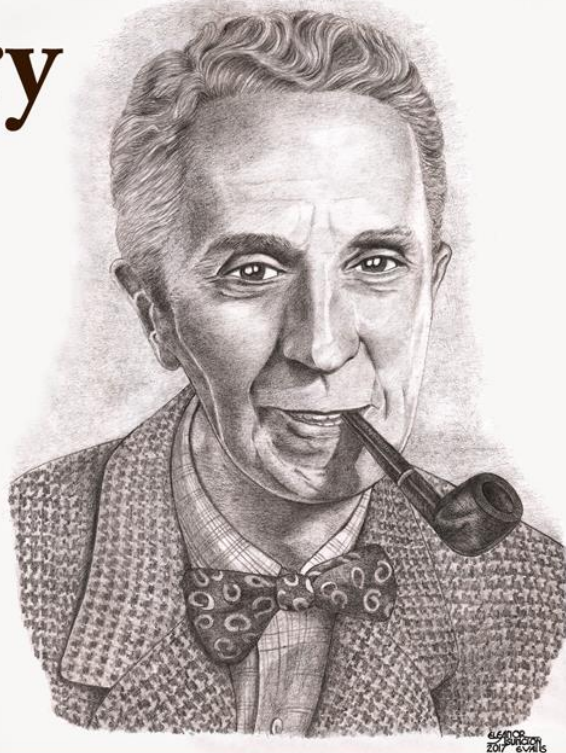


Gallery hours: Wednesday, Friday, Saturday, Sunday: 1 PM to 5 PM

February 2017

February 2017



**Norman
Rockwell**

**Born:
February 3, 1894**

This Month's Portfolio

Support the Sketch Club	2
Membership	5
Sketch Club Activities	6
Member Dinner Meeting	10
Help Wanted	12
2016 Main Gallery Schedule	13
2016 Stuart Gallery Schedule	17
Sketch Club Open Workshop Schedule	18
Art Natters: Members News	19
Calls for Work and Notices	27
Member Classifieds	30
Call for Volunteers	31

Send your member news, announcements and corrections to portfolio@sketchclub.org. The deadline for ALL submissions is 1-week before the end of the month.

Reminder: It's never too late. You can always renew your membership

You may pay online at

<http://sketchclub.org/annual-dues-payment/>

or mail your check to:

The Philadelphia Sketch Club

235 S. Camac St.

Philadelphia, PA 19107

For questions please contact the Gallery

Manager at 213335-545-9298 or email:

executivedirector@sketchclub.org

Late Breaking News – See items that were submitted after the publication date. Go to:

info@sketchclub.org

The PSC general email is: [info@sketchclub](mailto:info@sketchclub.org)

Gallery hours: Wednesday, Friday, Saturday, Sunday: 1 PM to 5 PM

February 2017

Support the Sketch Club

Contribute

Please consider making your tax-deductible contribution now. These funds will be put to good use providing enhanced services to our members and friends.

Membership dues cover only a small portion of the PSC's operating expenses. Competition for funding for arts organizations like the Sketch Club is increasingly competitive and total funding for the arts is shrinking. Your additional support will keep the PSC an active support for visual artists in the Metropolitan Philadelphia area.

The Philadelphia Sketch Club is an IRS designated 501(c) (3) non-profit organization which allows your donations to be tax deductible.

You can call the office at 215-545-9298, mail checks to the Sketch Club or visit the Contribute page of our Website.

Visit our **Contribute** page of our website to give online at:

<http://sketchclub.org/support-us/>

Smile.Amazon.Com

Support the Sketch Club when you purchase from Amazon, use Amazon Smile
It costs you nothing and makes money for the PSC

The Sketch Club's AmazonSmile Link: <http://smile.amazon.com>

Thank you for your participation in the AmazonSmile program.

Purchases made by Sketch Club supporters using AmazonSmile in May resulted in a \$27.15 AmazonSmile contribution to the PSC. It's not much, but every cent helps. So don't forget, use the above link when purchasing from Amazon and increase the PSC's income.

What is AmazonSmile?

Amazon Smile is a simple and automatic way for you to support your favorite charitable organization every time you shop, at no cost to you. When you shop at smile.amazon.com, you'll find the exact same low prices, vast selection and convenient shopping experience as Amazon.com, with the added bonus that Amazon will donate a portion of the purchase price to your favorite charitable organization. You can choose from nearly one million organizations to support.

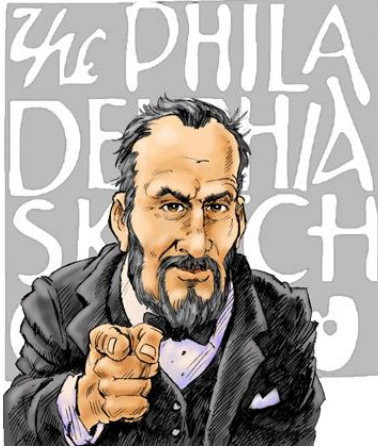
To learn more about Amazon Smile go to: <http://smile.amazon.com/gp/aw/ch/about>

Gallery hours: Wednesday, Friday, Saturday, Sunday: 1 PM to 5 PM

February 2017

Support the Sketch Club

Volunteers are **Always** needed!



We are now seeking a PSC member with great organizational skills to assist in managing the Member Dinner arrangements. If you want to get involved in this important PSC activity, please contact us ACAP at: executivedirector@sketchclub.org

Other volunteer opportunities:

- Gallery Sitting
- Accept/Return Work
- Special Projects
- Assist with Exhibition Tasks

Help the PSC with important positions within the PSC that need volunteers to take over! Contact [Faad Ghoraishi](#) at to help your club with future events



The **PHOTOLounge** supports the Philadelphia Sketch Club and its members:

**Sketch Club Members receive a 15% discount at PHOTOLounge.
Use online promo code "sketch".**

The PHOTOLounge is located at 1909 Chestnut St. Philadelphia PA 19103.

For nearly 20 years, PHOTOLounge's focus has been the simple idea that pictures should be beautiful, affordable, and long lasting. We're a very adept photo lab with diverse services from iPhone printing to shoebox scanning. You can bring us film for processing, and also order prints online, or from the App. Come in and print your world.

**Sketch Club Members receive a 15% discount at PHOTOLounge.
Use online promo code "sketch".**

267-322-6651 – www.myphotolounge.com

Gallery hours: Wednesday, Friday, Saturday, Sunday: 1 PM to 5 PM

February 2017

Support the Sketch Club

Sketch Club members receive 20% discount



Framing Family Treasures for over 20 Years



We offer a variety of framing materials and techniques including:

- Archival / conservation treatment • Specialty mats (Linen, Suede, Silk)
- Stretching / Blocking of needleart and oils
- 1000's of moulding choices • 22 karat finished corner frames • Memorabilia framing
- Custom toning / coloring • Decorative mat cuts • French matting • Fillets
- Mirrors • Shadowboxing • Dry Mounting

www.CanalFrame.com • CanalFrame@comcast.net • 215-493-3660

1093 General Greene Road, Washington Crossing, PA 18977

Like, Link & Share

If you're not following the Philadelphia Sketch Club on Facebook re-tweeting Sketch Club tweets yet, it's time that you did. We have well over 2000 Facebook followers. Get the word out about the Sketch Club. Please click the like button and share your comments and invite your friends to like our page.

Follow @PhilaSketchClub on Twitter, we have almost 400 followers. Please click the heart button and re-tweet our announcements.

Include links on your website, blogs and social media to The Philadelphia Sketch Club to increase traction across social media platforms.

Follow us on Facebook, Twitter and Instagram now!

Thanks to Don Brewer and Michelle Lockamy for managing PSC social media sites.



Gallery hours: Wednesday, Friday, Saturday, Sunday: 1 PM to 5 PM

February 2017

Membership

Not a PSC Member?: Join Now!

If you're reading this edition of the Portfolio and you're not a member of the PSC, you should consider joining the more than 200 other Philadelphia area artists who have. The PSC is one of the most active visual art venues serving center city Philadelphia. The PSC is a hands-on organization that offers its members the opportunity to participate in all aspects of creating and presenting work to the public. It presents over 20 scheduled group and solo exhibitions annually and offers a wide range of daily workshops. [Get info and an application here.](#)

If you are a member of the PSC, please feel free to share the Portfolio with your artist friends and encourage them to become members.

Membership Renewal

You can check the status of your membership by going to the Current Members page on the PSC web-site: <http://sketchclub.org/sample-page/memberspace/>. All current members are listed. An asterisk (*) means that the membership has expired but is within the 60-day grace period for renewal. Names in red are active links to the individual's web site.

Renew Now! <http://sketchclub.org/annual-dues-payment/>

If you have any questions about your membership, please don't hesitate contact us at membership@sketchclub.org or call the office: 215-545-9298.

Gallery hours: Wednesday, Friday, Saturday, Sunday: 1 PM to 5 PM

February 2017

S

Sketch Club Activities

Check-out the Sketch Club Bulletin Board.



Recently, PSC members asked for some method of communicating between members of the PSC community. In response to this request, Board of Directors agreed to add a PSC Bulletin Board to the PSC web-site. You can visit and sign-up for this site at: <http://bbd.sketchclub.org/>.

You can also find the link on the PSC home page. Answers to questions about using the PSC BB are found on the Frequently Asked Questions (FAQ) page: [FAQs](#). The site is

monitored by **Ken Weiner**, PSC Vice-president.

Anyone can view entries on the site but you must register to post topics or responses. For starters, we've built-in several topics. We encourage the creation of new topics as needed.

Try it out. Enhance your creative life.

Gallery hours: Wednesday, Friday, Saturday, Sunday: 1 PM to 5 PM

February 2017

Sketch Club Activities

Critique Night

Next Meeting: February 15th, 2017

Open to PSC Members and Non-Members

RSVP to **Michelle Lockamy** at 215-545-9298 or

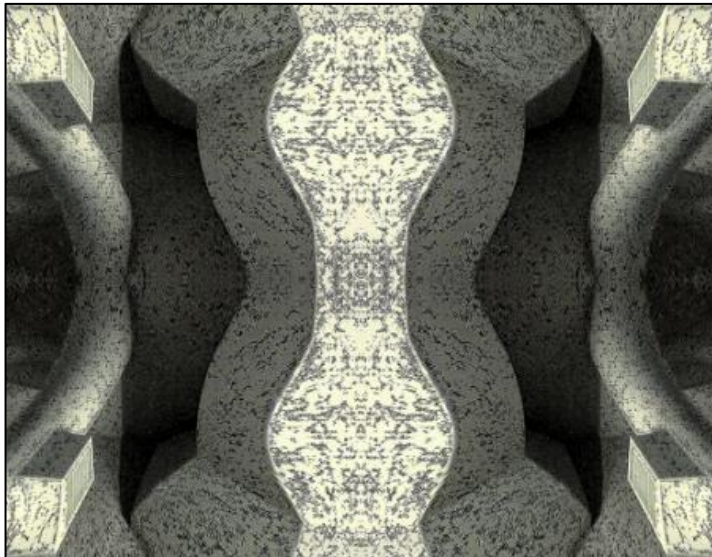
executivedirector@sketchclub.org

Critique Night is held in the Library of the Sketch Club every third Wednesday beginning at 7 PM. Bring work you've finished, work in progress, or just sketches for work you're planning! Photos, digital work, drawings, all mediums are welcome; we can project digital images on a screen for review, so you have the option to show work that may be too big or too heavy to transport to the Club. There is no one individual directing the critique, just your fellow artists and peers. Facilitated/monitored by **Rich Harrington**, PSC President



Photo Circle

Next Meeting: February 9th, 2017 from 6:30 to 8:30 PM



The Photo Circle meets every 2nd Thursday at 6:30 PM. You can contact Steve anytime at si22@drexel.edu or 215-300-9192 (cell). **Steve Iwanczuk**, Photo Circle Monitor and Member of Philadelphia Sketch Club Board of Directors.

Gallery hours: Wednesday, Friday, Saturday, Sunday: 1 PM to 5 PM

February 2017

Sketch Club Activities

Key Circle Volunteers

Key Circle Volunteers: Alice Chung, Wayne Franks, Faad Ghoraishi, Donald Kuetemeyer, Katy Lin, Marilee Morris, Rosa Kim Paik, Lauren Sweeney

The story behind the “Key Circle” volunteer group

There are many types of volunteer activities that are essential to maintaining the Sketch Club as a vibrant art club and showcase for outstanding art. For the last year a small group of member volunteers dubbed the “Key Circle” has been working to help the Club be reliably open during scheduled weekend gallery hours, as well as drop-off and pick-up sessions, jurying sessions, etc. – all the background work that goes into putting on each show.

We are dubbed the “Key Circle” because each of us has direct access to open the club. This also means that one of our 8-member group should be signed up for each session so the other volunteers can be assured of access. Equally importantly, Key Circle members quickly become more familiar with many aspects of Sketch Club functioning – and thus more comfortable handling all manner of situations.

This past year, over 50 total volunteers staffed the galleries on weekends, drop-off and pick-up events. Even though many volunteered just a few times during the year, those numbers added up to fully staffed shows for much of the year, at least until the busy fall season. It would make all the difference going forward if the Key Circle group could be expanded from its current 8 members to 12 or more, and if we could gain a modest increase in volunteering from the group of 50 volunteers, or add a few more volunteers. Perhaps members could add a volunteer session for every show in which they get a work accepted. Then invite your friends and colleagues to visit the club when you are there. Just a thought!

If you are now curious about joining the key circle, or just interested in becoming more knowledgeable about how to do certain things as a regular volunteer, the next time you volunteer ask your Key Circle partner to explain things more fully. Are you mystified by what to do if someone inquires about buying a work of art when no one is there to open the office? How to turn up the thermostat? How to buzz a visitor in? No one learns these things overnight, or just from reading a set of instructions. (However, there is a detailed lime-green Volunteer notebook in the hall outside the office that contains all sorts of useful information about the club.) For those who are considering stepping it up a notch to become a key circle member, consider that volunteering event your first “training session” to become a key circle person.

To get more information, please contact a Key Circle member at info@sketchclub.org



**GALLERY
OPEN**

Admission is Free



Gallery hours: Wednesday, Friday, Saturday, Sunday: 1 PM to 5 PM

February 2017

Sketch Club Activities

Philadelphia Sketch Club Archives

A Story from the Archives: An Incident from the "Late Unpleasantness"

The above title appears on a small printed article in the Sketch Club's archives. This sounds like a title from one of today's news articles but the date of 1861 – 1865 gives it away. The article relates the following story.

One day in 1918, among those present at the Sketch Club's Grub Club, were Frederick L. Pitts, formerly of the Confederate Cavalry; Charles M. Burns, formerly of Union Navy; Joseph Pennell, an etcher; J. McLure Hamilton, a painter.

The talk drifted to the ammunition in use at this date, its destructive qualities and the range obtained, which reminded Colonel Pitts of an incident which occurred in Virginia during the "late unpleasantness." The Yanks being short on regular ammunition were using in the emergency such scrap iron as they could collect. At the same time, according to the Colonel, their troop, among other things, was shy of horses and being in the Cavalry they figured that they should have horses. Scouts reported a small Yank force with some good horses located nearby at a village on the James River. It looked easy, therefore Colonel and his chum Jim Purnell sallied forth in the raiding party.

As they neared the corral of Yankee horses, their progress was halted by fire from a heretofore unobserved gunboat on the river. They were not inclined to take this shelling seriously until a lamp post flew over their heads followed by a cook stove.

Burns (interrupting): "Colonel, did you say that entertainment took place on the James River, Virginia?"

Pitts: "Yes sir, and on a beautiful summer day."

Burns: "Well, I was on gunner duty that day on that gunboat and, it would seem, I was a somewhat inaccurate marksman."



Sketch Club Member, Frederic Leonidas Pitts

SKETCH CLUB ARCHIVES COMMITTEE - We would like to reinstitute our Archives Committee which is charged with maintaining our historic records and art collection. This includes maintaining historic documents such as minutes, newsletters, exhibition catalogues, artist files, etc., and adding similar contemporary documents to them. The committee will also assist in answering inquiries from researchers and sharing archives information with our membership. It is expected that the archives committee would meet for a couple of hours on a Saturday or Sunday each month to carry out its duties. Interested members should contact Bill Patterson at bpatterson2045@comcast.net or 267-664-2434.

Gallery hours: Wednesday, Friday, Saturday, Sunday: 1 PM to 5 PM

February 2017

Sketch Club Activities

Limited Edition PSC Glassware

We have a limited number of stemless wine glasses which have the Club logo on one side and the Club corporate seal on the reverse. We are offering these for sale at the price of \$15 for two glasses to members while the supply lasts. Place your order by emailing Michelle at executivedirector@sketchclub.org or calling 215-545-9298. Please indicate when you will pick-up and pay for the glasses your order.



Member Dinner Meeting

The Feburary Dinner Meeting is cancelled.

This month we're trying something new!

As an alternative event, please to come into the Sketch Club on Sunday February 19, from 1-4pm and spend the afternoon with fellow members and their guests.

We'll have a potluck offering of food, still life drawing/painting in the Gallery and great conversation. **All free.**

Bring a friend, some food to share and your drawing/painting materials to enjoy the afternoon. If you don't know anyone there, just ask for Marilee or Jackie for introductions.

Note: Will be cancelled in the event of heavy snow.

Gallery hours: Wednesday, Friday, Saturday, Sunday: 1 PM to 5 PM

February 2017

Member Dinner Meeting

Coming in March

Plan to be at the PSC members Ides of March get-together.

Members will have chance to create a piece (a sketch, drawing, painting, whatever) to bring in for display, informal critique, etc. for this event. Easels with clipboards will be set-up for a temporary exhibit that afternoon. Suggested theme: "The Not So Enchanted Forest"

- Saturday March 11th.
- 2:00 – 5:00 PM
- Food – 2:30 PM. (Pot Luck)
- Cash Bar
- Music at 3:30 PM



Easels with Boards ready for work to be mounted on set up in Stewart Gallery.



Gallery hours: Wednesday, Friday, Saturday, Sunday: 1 PM to 5 PM

February 2017

Help Wanted

HELP WANTED FOR GRANTS

We're working on several projects that could help our Philadelphia Sketch Club enhance our success by serving our members better, as well as more practicing artists, and art lovers among Philadelphians and visitors to the city.

To do this, we need some help. We're seeking more financial backing from foundations in our area through the awarding of grants. This takes a big commitment in time and dedication.

If any of our members want to help and have experience in the process of grant writing, submission and the follow-through, please contact one of us by e-mail at executivedirector@sketchclub.org

Thank you.

Bill Kosman or Bill Patterson.

Gallery hours: Wednesday, Friday, Saturday, Sunday: 1 PM to 5 PM

February 2017

2016 Main Gallery Schedule

33rd Annual 2017 School District of Philadelphia and the Philadelphia Sketch Club Collaborating to provide the **HIGH SCHOOL ART SHOW**

DATES: February 5-26, 2017

DELIVERY AND HANGING BY INVITED HS ART

TEACHERS: Wednesday, February 1, 2017, 3:00 – 6:00 PM

Thursday, February 2, 2017, 3:00 – 6:00 PM

Friday, February 3, 2017, 3:00 – 6:00 PM

RECEPTION, AWARDS AND TAKE DOWN: Sunday, February 26, 2017

JUDGING FOR AWARDS: Wednesday, February 8, 2017

JUDGES:

- Deborah Klose, Director of Art Education, School District of Philadelphia
- Susan Rodriguez, Educator, Author of "Special Artist's Handbook," and others
- Josephine Viviani, Associate Professor, University of the Arts, and Professor, Moore College of Art and Design

To volunteer to help during the delivery times (Wed., Feb. 1, 3-6PM; Thurs. Feb. 2, 3-6; Fri. Feb. 3, 3-6PM) and reception, please, sign up on the website.

If you are coming to the reception, any finger food that does not need to be heated will be appreciated.



The 33rd Annual
PHILADELPHIA SKETCH CLUB
HIGH SCHOOL ART SHOW
FEBRUARY 5-26, 2017

Gallery hours: Wednesday, Friday, Saturday, Sunday: 1 PM to 5 PM

February 2017

2016 Main Gallery Schedule

Hello PSC Members,

Once again it is time to start planning for the High School Art Show (2017). As usual, we will be asking our loyal generous members for tax deductible contributions for awards for the young artists' artwork. The same procedure is still in place. Please make your check out to the "Philadelphia Sketch Club", with a note in the lower left corner, "HS Art Show Award", and mail it or bring it to the PSC office, Michelle Lockamy, Executive Director. Her hours are Wed., and Fri, 10:00-5:00PM. Also, notify the amount of your award (s) to Dorothy Roschen, in person, by Phone (215 848 3257), or email (droschen@me.com). Any amount is gratefully needed and appreciated. We do like each awardee to receive at least \$ 25.00. To achieve this, we combine donors for one award and some donors give multiple awards. Every donor is recognized on a posted complete awards list in the gallery, which is also in the catalogue. (Award amounts are not posted.)

Deborah Klose, Director of Art Education, School District of Philadelphia, will send the call to entry letters to all School District High School Art Teachers. (no charter schools) Usually, about 25-30 teachers respond and they bring and hang 5 labeled pieces each from their classrooms.

To volunteer to help the Art Teachers hang the work on deliver days (Feb.1,2,3) let Dorothy know or to sign up-go to the "Volunteers" under the Membership tab on the PSC website. Food donations for the reception (Feb. 26) will be asked for closer to that date.

Thank you, Members, for your wonderful support for this show. It would be absolutely impossible without you.

Sincerely,

Dorothy Roschen, Chair, 2017 HS Art Show, (215 848 3257), <mailto:droschen@me.com>, and Committee

Deborah Klose, Director of Art Education, Office of Arts and Academic Enrichment, School District of Philadelphia

Gallery hours: Wednesday, Friday, Saturday, Sunday: 1 PM to 5 PM

February 2017

2016 Main Gallery Schedule

Coming Next:

Please join us at the Philadelphia Sketch Club for our next open juried show.

Art of the Flower 2017 PSC Exhibition

***Presented in Memory of
Donald C. Meyer***


March 10th through April 1st, 2017

Entry Deadline: Sunday Feb. 12

Enter Online at:


<http://sketchclub.org/psc-official-online-submission-site/>

View the prospectus: [AOF prospectus 2017](#)



**The Art
of the
Flower**
*presented in
memory of
Donald C. Meyer*

March 10th through
April 1st, 2016
at the Philadelphia Sketch Club



Gallery hours: Wednesday, Friday, Saturday, Sunday: 1 PM to 5 PM

February 2017

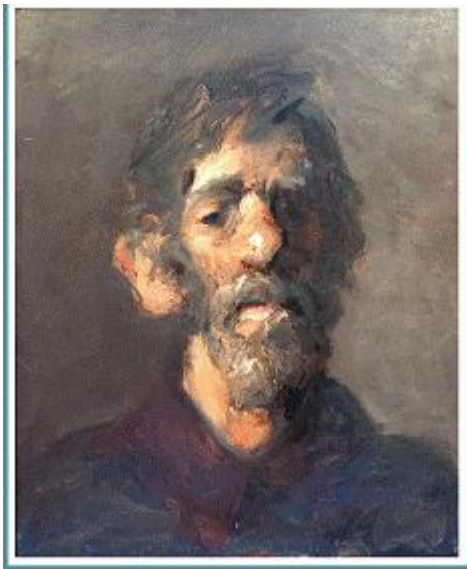
2016 Main Gallery Schedule

Coming: April 14 through May 6

The Philadelphia Sketch Club's 154th Annual Exhibition of Small Oil Paintings

The Philadelphia Sketch Club's upcoming 154th Annual Small Oils Exhibition represents an opportunity for today's artists to connect with many of the great artists of the past. They can have your work exhibited at this prestigious exhibition just as Eakins, Anshutz and N. C. Wyeth have. The 154th Annual Exhibition of Small Oil Paintings presented by the Philadelphia Sketch Club represents one of the longest running and most prestigious juried exhibitions in the country. This year's show runs from April 14 through May 6 with a reception on April 23 from 2 to 4 PM. The exhibition will feature over 150 works by prominent and emerging artists. The exhibition awards are not just certificates and cash, but also the R. Tait McKenzie Small Oils Medal. Dr. McKenzie was an artist who created Olympic medals but he was also a physician who developed many of the modern theories of physical therapy. He designed a medal specifically for this exhibition. In addition to the best three in show awards, there will also be special awards for the best landscape, still life, portrait and abstract. Traditionally, the exhibition also features a work by each of the three jurors. This year's Jurors are Robert Goodman, Aubrey Levinthal and Stefanie Lieberman. Gallery hours at the Philadelphia Sketch Club, 235 S. Camac St., are Wednesday, Friday, Saturday & Sunday from 1 to 5 PM.

[Get the 154th Small Oils Prospectus 2017](#)



Tom Kohlman, *Portrait of Morales*, oil. First Award - 2016 Small Oils Show

Founded in 1860, the Sketch Club is America's oldest artists club. Originally, the show was founded so that artists could display a number of small examples of their works with the hope that a patron would order a larger painting. The size limitation on the paintings is no larger than 20" x 20" excluding frame. Prior medal winners in this exhibition have included Paulette Van Roekens, John Folinsbee, Alice Kent Stoddard, Arthur Meltzer, Antonio Martino, Dorothy Van Loan, Doris Silk, John Redmond and Al Gury



R. Tait McKenzie, Small Oils Medal, 3" dia. bronze

Gallery hours: Wednesday, Friday, Saturday, Sunday: 1 PM to 5 PM

February 2017

2016 Stuart Gallery Schedule

High School Show Teachers

See work by created by the artist/teachers whose work is included in the High School Exhibition showing in the main gallery.

February 5-26, 2017

Exhibition Chair: Jacqueline Barnett

Exhibition Schedule and Events Calendar Always Available at sketchclub.org

Don't forget, you can always see the schedule for the coming year on the PSC web-site. Go to the Calendars/Events menu and select Exhibition Schedule. Here's the link:

<http://sketchclub.org/exhibitions/>. And new for this year, we've added an Events Calendar under the Calendars/Events menu. This calendar will show a complete list of the dates for important activities and deadlines. See it here: <http://sketchclub.org/calendar/>

Gallery hours: Wednesday, Friday, Saturday, Sunday: 1 PM to 5 PM

February 2017

Sketch Club Open Workshop Schedule

All workshops are open to the public. There is no need to register before attending. You do NOT have to be a member of the Philadelphia Sketch Club to participate in the workshops. Our workshops are open to anyone who is interested in drawing, painting or printmaking. All skill levels are welcome. Fees: Model workshops: \$8/session members, \$9/session for non-PSC members; Printmaking workshop: \$10/session; All workshops \$6 for full-time students. Monitored by PSC members.

Life Model	Costumed Model	Printmaking
<p>Mondays – Extended pose (multi-session): 6:30 PM-9:30PM</p> <p>Monitors: Robert Bohne, Vince Docktor, Dan Kuetemeyer</p> <p>Tuesdays – Extended pose: 12:00 PM to 3:00 PM Monitor: Jacqueline Barnett</p> <p>Wednesdays – Extended pose: 6:30 to 9:30 PM Monitor: Vince Docktor</p> <p>Saturdays – Extended pose: 9:30 AM to 12:30 PM Monitor: Vince Docktor</p>	<p>Thursdays</p> <p>Extended pose</p> <p>12:00 PM to 3:00 PM Monitor: Bob Bohne.</p>	<p>Tuesdays</p> <p>10:00 AM to 2:00 PM Monitor: Elizabeth H. MacDonald</p>

Please Note: Those who use oil paints should bring their own container(s) to remove used solvents. Odorless solvents only.

Gallery hours: Wednesday, Friday, Saturday, Sunday: 1 PM to 5 PM

February 2017

Art Natters: Members News

February Banner Artist

This month, we thank the Sketch Club's member **Eleanor A. Evans** for submitting her piece, "Norman Rockwell". Eleanor received a Bachelor of Fine Arts degree in Illustration from The University of the Arts, Philadelphia, PA and has worked as a Medical Illustrator for The University of Pennsylvania Medical School and as a freelance Illustrator and Graphic Designer for almost thirty years.



As a mother of four children, she enjoys being a "Girl Scout-PTO-Soccer Mom", along with working as an Adjunct Art Instructor for several private schools and colleges. Please visit her website: www.EllyArt.com.

In 2017 PSC member, **Amanda Stevenson** will be teaching Portrait Photograph in-studio and on-location Master Class and Photograph Best Business Practices at Community College of Philadelphia. Open to all as current and continuing education students and professionals. Sign up today for a learning adventure that will give you the latest tools and skills to master your craft.

<http://ccp.edu/college-catalog/course-offerings/photographic-imaging-courses>

[PHOT 202 Commercial Photography - Portrait](#)

[PHOT 299 Professional Practices in Photographic Imaging and Digital Video Production](#)

Gallery hours: Wednesday, Friday, Saturday, Sunday: 1 PM to 5 PM

February 2017

Art Natters: Members News

PSC member, **Diane Hark** conducts watercolor workshops in Israel.



Returning to Israel after 25 years was not just awe inspiring but a historical revelation and admiration for what this small state accomplishes despite the hurdles along the way.

I had explored many avenues over the past year, to conduct a watercolor workshop at any facility that would have me. Language obstacles, time availability, material limitations and logistics all prevented my hopes to share my expertise and enthusiasm. I guess my

Jewish Mother tenaciousness prevailed, and so, after meeting the Key Note speaker at Jerry's Alumni graduation, Rabbi Kalman Schmucl, founder of the Shalva Foundation for Special Needs Children in Jerusalem, invited me to his school to give the children a painting class. "LOOK NO FURTHER" he said. Here are some of the images of the 20 autistic children, ages 9-15, who responded enthusiastically to my excitement.



It truly reflects the adage "it is far better to give than to get" hope we can all continue to share our abilities in the new year.

PSC member, **Ken Weiner** wil have a solo exhibition, Abstract Explorations, at the Center on the Hill in the Presbyterian Church of Chestnut Hill; 8855 Germantown Avenue; Philadelphia PA 19118. Feburary 1st through the 28th 2017. The Center is open to the public.

Reception: Friday February 3rd 5:00 - 7:00 PM

For information about the center and directions:

<http://www.chestnuthillpres.org/center-on-the-hill/>

[Directions](#)

[Contact Me](#)



Gallery hours: Wednesday, Friday, Saturday, Sunday: 1 PM to 5 PM

February 2017

Art Natters: Members News

PSC member, **Alice Chung** is showing her work from Jan 6 to Jan 30, 2017 at Center on the Hill (8855 Germantown Pike, Philadelphia), and also Breamer Medical Arts Building at Einstein Medical Center Montgomery (559 West Germantown Pike, East Norriton, PA)



Yellow Stone Park



Winter

PSC member, **Elizabeth Zack**, is a member of the Gathering Art Gallery and Boutique. She invites you to join their Open House Saturday February 11, from 5-8 PM.

Please join us and bring a friend.

We are located at 65A West State Street,
Doylestown between Domani Star and Paganini's Restaurant

Hours: Wed-Sun. 12-7 PM

Gathering
ART GALLERY & BOUTIQUE

BE OUR VALENTINE

SATURDAY, FEBRUARY 11

OPEN HOUSE, 5-8PM
PERFORMING ARTISTS: TERRY EPPSON, MARGARET W. SPARTAN, ANNE ROSE,
CORINNE WILKINSON, LUCIA CHILITTO, G. RAGGIO JAMES, EUGENIE ZACK,
KAREN MCPHADEN, MICHELLE HARRIS, CATOLIN STEED & MELANIE EYRE

POETRY READING, 7-8PM
FEATURING POETS DAME SHAMS-GUANTERI & GEMIL RUTTES FOLLOWED BY OPEN MIC.

WITH MUSIC BY OUR FAVORITE LOCAL DIVA, TINA MARGOT!
GATHERING, 65 W. STATE STREET, DOYLESTOWN, 18901

Gallery hours: Wednesday, Friday, Saturday, Sunday: 1 PM to 5 PM

February 2017

Art Natters: Members News

"A Snow Day" by PSC member, **Laura Rutherford Renner**, has been featured on the cover of the winter addition of Philadelphia Stories magazine. The magazine features works of fiction, art, and poetry by regional artists. Laura is a proud member of Artists Gallery in Lambertville. Her work, and those of her colleagues at the gallery, is featured monthly and rotated throughout the gallery space during the year



"A Snow Day" 11" x 14", oil on wood

Gallery hours: Wednesday, Friday, Saturday, Sunday: 1 PM to 5 PM

February 2017

Art Natters: Members News

PSC member, **Doris Peltzman** has two works on display at the Main Line Art Center's 2017 Professional Artists Members Exhibit. The exhibition was juried by Ross Mitchell, Director Barnes de Mazia Education and Outreach Program at the Barnes Foundation. The exhibit will run through February 12, 2017



In the Artist Spotlight at El Poquito, Mexican Cantina **located** along Germantown Avenue in the Heart of Chestnut Hill in Philadelphia, PA. Our Artist Spotlight offers local artists to display their work and enjoy an evening with friends and family. During the month of February, we are featuring the artwork of PSC member, **Cheryl Soltis**. Her work will be on display from Saturday, February 11th through Saturday 18th and is available for patrons to enjoy and purchase. Join us for an Artist Reception Thursday, February 16th 5:00 - 7:00 pm, 8201 Germantown Ave, Philadelphia, PA 19118. <http://elpoquito.com/>

Gallery hours: Wednesday, Friday, Saturday, Sunday: 1 PM to 5 PM

February 2017

Art Natters: Members News

The Center for Contemporary Art is pleased to hold its 2017 Members' Juried Exhibition at the Watchung Arts Center.

"Returning Home," by artist **Susan A. Esbensen** was selected for this exhibition. 197 entries were received from 69 members and the juror was faced with the task of selecting only 30 pieces for the exhibition.

Juror Michael Wolf eloquently explained making his selections for the exhibition. "Selecting artwork from such a diverse and skilled group of artists was difficult and challenging. In the process, I strove to select work that was technically proficient, made a bold visual statement, and considered the formal elements of art while addressing current ideas in contemporary art. The overall quality of the work was very high both technically and aesthetically."

Michael Wolf is a sculptor, teacher and writer based in New Jersey.



Returning Home

Exhibition Location: Watchung Arts Center, 18 Stirling Road, Watchung, N.J. 07069

Exhibition Dates: February 6 – 25, 2017

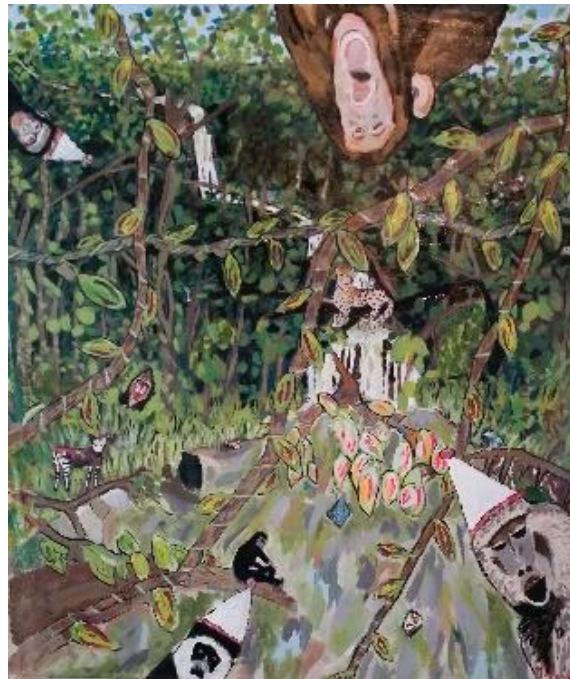
Opening Reception: Sunday, February 5, 2017 from 2-4 p.m.

Gallery hours: Wednesday, Friday, Saturday, Sunday: 1 PM to 5 PM

February 2017

PSC member, **Tracey Landmann** has completed a trio of cognitive development murals for the University of Delaware's Pediatric Mobility Lab and Go Baby Go! program

Fantasy Landscapes Designed to Nurture a Synergy between Physical and Cognitive Mobility



Gallery hours: Wednesday, Friday, Saturday, Sunday: 1 PM to 5 PM

February 2017

Art Natters: Members News

Gallery Talk with Paul DuSold

This February, artist **Paul DuSold** will be giving a gallery talk at the Michener Museum in Doylestown. The Michener has a wonderful collection of Pennsylvania Impressionist paintings and Bucks county artists. Currently, they also have an exhibition focusing on the effect of Modernism on Impressionism.



Paul will be discussing both of these in the gallery talk. The discussion will focus on Buck's county Impressionism and the effects of the armory show and the advent of Modernism on the Artists of our region. Through comparison and contrast of different paintings, insight will be gained as to how individual artists were effected for better or worse by the artistic turbulence of the early 20th century.

To register e-mail Paul at pauldusold@verizon.net

Date: Saturday, February 18

Location: Michener Museum, 138 S. Pine St. Doylestown, PA18901

Time: 11:00 A.M. – Suggested arrival closer to 10:30 A.M.

Cost: \$25 including museum admission and gallery talk

\$15 for museum members

Paul DuSold www.pauldusold.com

Gallery hours: Wednesday, Friday, Saturday, Sunday: 1 PM to 5 PM

February 2017

Calls for Work and Notices

Award-Winning Artist **Annette Alessi** Publishes New Book

Garnet Valley, PA – December 5, 2016 – Award-winning artist Annette Alessi announced today that she along with her husband, John Alessi, have published a new book titled, *The Brave Little Soul*, which is available on Amazon.com for purchase.

The Brave Little Soul is a story of a special angel who heroically volunteers to enter the world and take on suffering to bring about the good in humanity. Dealing with the loss of a child is an incredibly confusing time for family and friends. Despite their suffering, these brave children often cause legions of people to unite and perform beautiful acts of love. This beautifully illustrated version captures the story and renders it perfectly.

"*The Brave Little Soul* was written by my husband, John Alessi, in 2005 after our dear friend's son, Liam James Kane, passed from Neuroblastoma, a pediatric cancer. Even though it took 10 years to be able to manifest the illustrations on my behalf, the book is finally ready to help many to make peace with the loss of their child." said Annette Alessi.

This book is now available for purchase on Amazon.com. Profits from this book will be donated to organizations that help children who suffer from cancer and their families who support them.

About Artist Annette Alessi:

Annette Alessi is an award-winning artist who studied with Karl Kuerner, a well-known artist who was mentored by Andrew Wyeth. Her specialty is the portrait and the figure as she commissions portraiture, while she also enjoys the landscape. She frequently exhibits her landscapes which are now part of a large collection called "Brandywine Valley Landscapes" which can be found at various galleries and art exhibitions locally and nationally, and viewed on her website at www.alessicreations.com.

For further information about Annette Alessi's work including dates and times for her upcoming exhibitions, please visit her website at www.alessicreations.com or email annte@alessicreations.com

Gallery hours: Wednesday, Friday, Saturday, Sunday: 1 PM to 5 PM

February 2017

Calls for Work and Notices

Deb K Simon has "Monet's Garden", oil/canvas juried into the Professional Artist Membership exhibition at Main Line Art Center. The show runs through February 4th.

Or Hadash Staircase Gallery

Reconstructionist Congregation Or Hadash in Fort Washington, PA is housed in a historic building, formerly the summer mansion of well-known society families. We have adapted a formerly grand entrance staircase into what we call The Staircase Gallery.

The Staircase Gallery has been having 3 shows a year for over 14 years. We have had shows featuring a diverse group of painters, photographers, children's art, and illustrators. We have incorporated writings and travel logs into exhibits for multi-talented artists who work in multiple mediums.

We are always looking for local artists who would like to show their work. The application process is to simply let us know of your interest, sending us a link to a site where we can see your work. If the Gallery committee feels your work would work in our space, we will contact you to schedule a show. The school students pass through the gallery so we must consider what is appropriate viewing for them in our decision making process. Many artists make a list of prices available for sales. We provide assistance in the hanging of the show and let the artist know what supporting documents are typically displayed.

We are currently scheduling for the 2017 season and going forward. If you would like to have a show in our unique and charming gallery, please let us know at mikeoswald@comcast.net. We will start the process and let you know what the steps are if we go forward.

Gallery hours: Wednesday, Friday, Saturday, Sunday: 1 PM to 5 PM

February 2017

Calls for Work and Notices

Academy House Exhibition Opportunity

The Academy House art committee is now looking for pieces to display in our lobby starting sometime in April 2017.

If any of your artists at the Philadelphia Sketch Club are interested, ask them to stop into the lobby (which now can be accessed only through 251 S. 15th Street) and look at the spaces currently being used. (The two pieces on the lobby level are smaller than we would prefer; the piece on the landing is an appropriate size.) If they think they have work that would be suitable for us, ask them to send photos and dimensions and we will take them up for consideration. Pieces displayed can be for sale, though the condo asks 20% of the selling price.

Photos can be emailed to this address or dropped off at the front desk with my name on the envelope.

Thanks,

Michael Goldman

academyhousearts@gmail.com

1425 Locust Street

Philadelphia, PA 19102

Good Reads: Members Suggestions

From time-to-time, we receive suggestions for art-related material that we feel our members would find interesting.

This month, PSC member, **Patricia Ilves-Corressel** highly recommends the following links that provide in-depth information about Canadian artists comprising the Group of Seven.

- <http://www.arthistoryarchive.com/arthistory/canadian/The-Group-of-Seven.html>
- <http://www.northernontario.travel/group-of-seven/group-of-seven>
- <https://www.thestar.com/entertainment/visualarts/2016/07/01/this-lawren-harris-gossip-as-delicious-as-ever.html>
- <http://www.arthistoryarchive.com/arthistory/canadian/Lawren-Harris.html>

Emily Carr, may be the most famous Canadian woman painter, was later included into the group of seven. Here's a link: <http://www.arthistoryarchive.com/arthistory/canadian/Emily-Carr.html>

Something you find interesting that you want to share? Send it to portfolio@sketchclub.org to be included in the Portfolio

Gallery hours: Wednesday, Friday, Saturday, Sunday: 1 PM to 5 PM

February 2017

Member Classifieds

Photography Services for Artists

Do you need high-quality digital images of your work? Is glare a problem? Color balance not quite right? I can help you get great images of your 2-D or 3-D work suitable for digital file output or output for presentation and hard-copy presentation. I offer flexible availability, willingness to travel, special pricing for Sketch Club members.

Contact PSC member **Ken Weiner** at info@sketchclub.org.

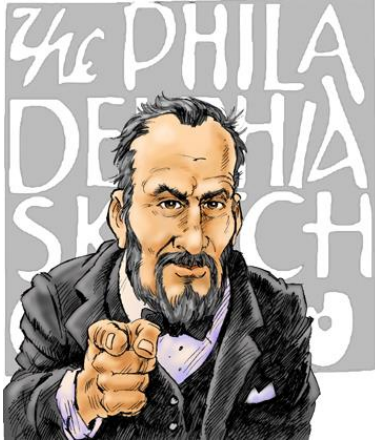
Seeking Framers

Sketch Club members frequently ask about framing services. If you wish to provide framing services to PSC members, please contact the PSC at info@sketchclub.org or call the PSC office: 215 545-92908

Gallery hours: Wednesday, Friday, Saturday, Sunday: 1 PM to 5 PM

February 2017

Call for Volunteers



We have important positions within the PSC that need volunteers to take over! Contact Faad Ghoraishi at to help out your club with future events.

The Portfolio: The newsletter of the Philadelphia Sketch Club is published monthly. Editor: Ken Weiner;

Technical support and Web Master: Ken Weiner

Send your member news, announcements and corrections to portfolio@sketchclub.org. The due date for all materials is one week before the end of the month.

Back issues of the Portfolio are available at: <http://sketchclub.org/portfolio-archive/>

The Philadelphia Sketch Club

235 S Camac Street
Philadelphia, PA 19107
(215) 545-9298
<http://sketchclub.org/>
executivedirector@sketchclub.org

Gallery Manager: Michelle Lockamy

Officers:

- President: Richard Harrington
- Vice President: Kenneth Weiner
- Secretary: Fran Carter
- Treasurer: William Patterson

Board of Directors

- Vincent Docktor
- Melanie Dion
- Stephen Iwanczuk
- William Kosman
- Kevin Myers
- Nancy H. Mills
- Brian Siegel
- Charles F. Tarr
- Joe Winter