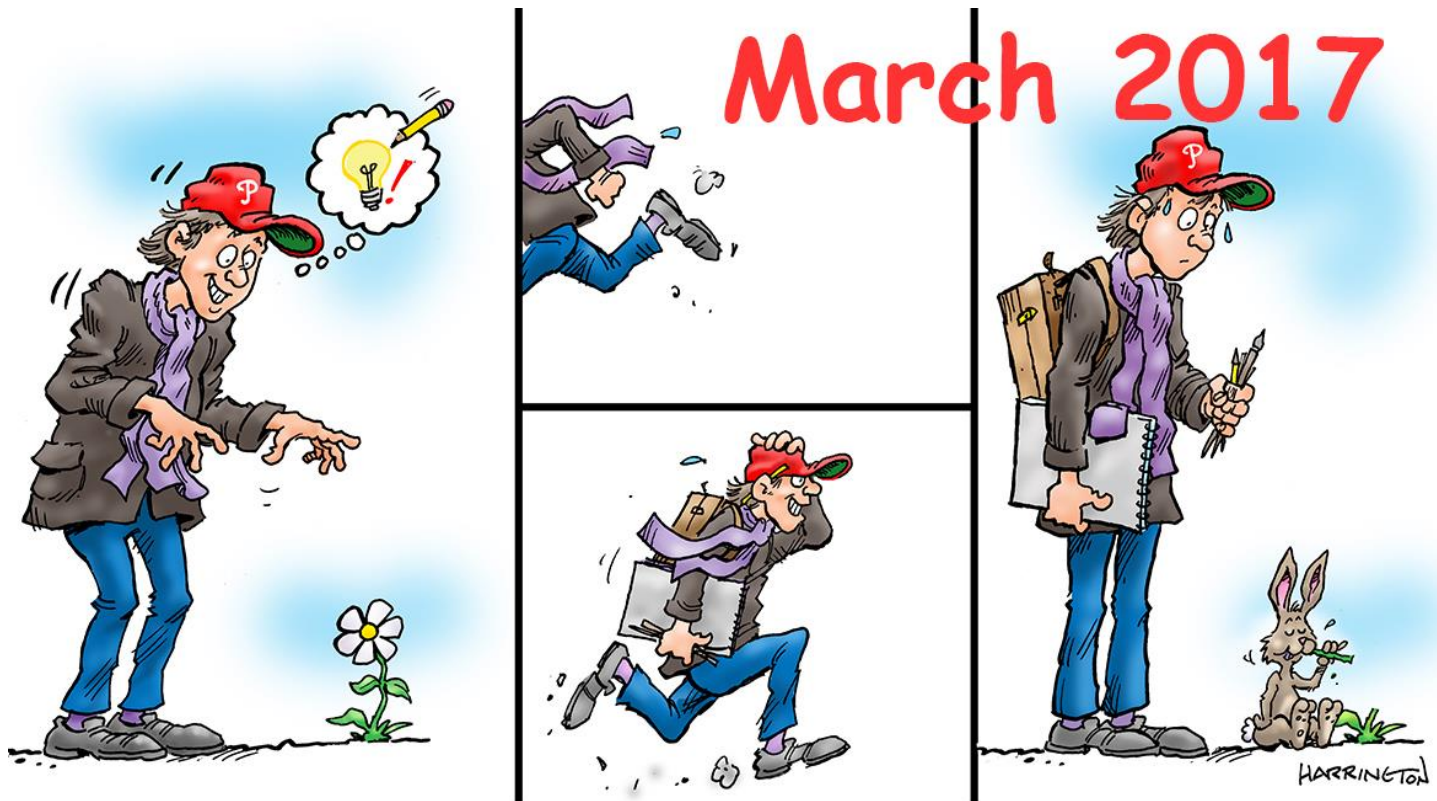


Gallery hours: Wednesday, Friday, Saturday, Sunday: 1 PM to 5 PM

March 2017



This Month's Portfolio

Support the Sketch Club	2
Membership	5
Sketch Club Activities	6
Member Get-Together	11
Help Wanted	12
2016 Main Gallery Schedule	13
2016 Stuart Gallery Schedule	15
Sketch Club Open Workshop Schedule	16
Art Natters: Members News	17
Calls for Work and Notices	21
Member Classifieds	24
Call for Volunteers	25

Send your member news, announcements and corrections to portfolio@sketchclub.org. The deadline for ALL submissions is 1-week before the end of the month.

Reminder: It's never too late. You can always renew your membership

You may pay online at

<http://sketchclub.org/annual-dues-payment/>

or mail your check to:

The Philadelphia Sketch Club

235 S. Camac St.

Philadelphia, PA 19107

For questions please contact the Gallery

Manager at 213335-545-9298 or email:

executivedirector@sketchclub.org

Late Breaking News – See items that were

submitted after the publication date. Go to:

info@sketchclub.org

The PSC general email is: [info@sketchclub](mailto:info@sketchclub.org)

Gallery hours: Wednesday, Friday, Saturday, Sunday: 1 PM to 5 PM

March 2017

Support the Sketch Club

Contribute

Please consider making your tax-deductible contribution now. These funds will be put to good use providing enhanced services to our members and friends.

Membership dues cover only a small portion of the PSC's operating expenses. Competition for funding for arts organizations like the Sketch Club is increasingly competitive and total funding for the arts is shrinking. Your additional support will keep the PSC an active support for visual artists in the Metropolitan Philadelphia area.

The Philadelphia Sketch Club is an IRS designated 501(c) (3) non-profit organization which allows your donations to be tax deductible.

You can call the office at 215-545-9298, mail checks to the Sketch Club or visit the Contribute page of our Website.

Visit our **Contribute** page of our website to give online at:

<http://sketchclub.org/support-us/>

Smile.Amazon.Com

Support the Sketch Club when you purchase from Amazon, use Amazon Smile
It costs you nothing and makes money for the PSC

The Sketch Club's AmazonSmile Link: <http://smile.amazon.com>

Thank you for your participation in the AmazonSmile program.

Purchases made by Sketch Club supporters using AmazonSmile in May resulted in a \$27.15 AmazonSmile contribution to the PSC. It's not much, but every cent helps. So don't forget, use the above link when purchasing from Amazon and increase the PSC's income.

What is AmazonSmile?

Amazon Smile is a simple and automatic way for you to support your favorite charitable organization every time you shop, at no cost to you. When you shop at smile.amazon.com, you'll find the exact same low prices, vast selection and convenient shopping experience as Amazon.com, with the added bonus that Amazon will donate a portion of the purchase price to your favorite charitable organization. You can choose from nearly one million organizations to support.

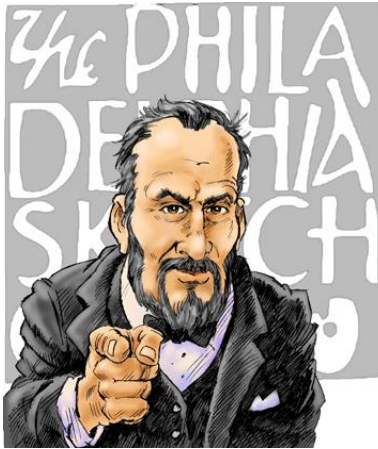
To learn more about Amazon Smile go to: <http://smile.amazon.com/gp/aw/ch/about>

Gallery hours: Wednesday, Friday, Saturday, Sunday: 1 PM to 5 PM

March 2017

Support the Sketch Club

Volunteers are **Always** needed!



We are now seeking a PSC member with great organizational skills to assist in managing the Member Dinner arrangements. If you want to get involved in this important PSC activity, please contact us ACAP at: executivedirector@sketchclub.org

Other volunteer opportunities:

- Gallery Sitting
- Accept/Return Work
- Special Projects
- Assist with Exhibition Tasks

Help the PSC with important positions within the PSC that need volunteers to take over! Contact [Faad Ghoraishi](#) at to help your club with future events



The **PHOTOLounge** supports the Philadelphia Sketch Club and its members:

**Sketch Club Members receive a 15% discount at PHOTOLounge.
Use online promo code "sketch".**

The PHOTOLounge is located at 1909 Chestnut St. Philadelphia PA 19103.

For nearly 20 years, PHOTOLounge's focus has been the simple idea that pictures should be beautiful, affordable, and long lasting. We're a very adept photo lab with diverse services from iPhone printing to shoebox scanning. You can bring us film for processing, and also order prints online, or from the App. Come in and print your world.

**Sketch Club Members receive a 15% discount at PHOTOLounge.
Use online promo code "sketch".**

267-322-6651 – www.myphotolounge.com

Gallery hours: Wednesday, Friday, Saturday, Sunday: 1 PM to 5 PM

March 2017

Support the Sketch Club

Sketch Club members receive 20% discount



Framing Family Treasures for over 20 Years



We offer a variety of framing materials and techniques including:

- Archival / conservation treatment • Specialty mats (Linen, Suede, Silk)
- Stretching / Blocking of needleart and oils
- 1000's of moulding choices • 22 karat finished corner frames • Memorabilia framing
- Custom toning / coloring • Decorative mat cuts • French matting • Fillets
- Mirrors • Shadowboxing • Dry Mounting

www.CanalFrame.com • CanalFrame@comcast.net • 215-493-3660

1093 General Greene Road, Washington Crossing, PA 18977

Like, Link & Share

If you're not following the Philadelphia Sketch Club on Facebook re-tweeting Sketch Club tweets yet, it's time that you did. We have well over 2000 Facebook followers. Get the word out about the Sketch Club. Please click the like button and share your comments and invite your friends to like our page.

Follow @PhilaSketchClub on Twitter, we have almost 400 followers. Please click the heart button and re-tweet our announcements.

Include links on your website, blogs and social media to The Philadelphia Sketch Club to increase traction across social media platforms.

Follow us on Facebook, Twitter and Instagram now!

Thanks to Don Brewer and Michelle Lockamy for managing PSC social media sites.



Gallery hours: Wednesday, Friday, Saturday, Sunday: 1 PM to 5 PM

March 2017

Membership

Not a PSC Member?: Join Now!

If you're reading this edition of the Portfolio and you're not a member of the PSC, you should consider joining the more than 200 other Philadelphia area artists who have. The PSC is one of the most active visual art venues serving center city Philadelphia. The PSC is a hands-on organization that offers its members the opportunity to participate in all aspects of creating and presenting work to the public. It presents over 20 scheduled group and solo exhibitions annually and offers a wide range of daily workshops. [Get info and an application here.](#)

If you are a member of the PSC, please feel free to share the Portfolio with your artist friends and encourage them to become members.

Membership Renewal

You can check the status of your membership by going to the Current Members page on the PSC web-site: <http://sketchclub.org/sample-page/memberspace/>. All current members are listed. An asterisk (*) means that the membership has expired but is within the 60-day grace period for renewal. Names in red are active links to the individual's web site.

Renew Now! <http://sketchclub.org/annual-dues-payment/>

If you have any questions about your membership, please don't hesitate contact us at membership@sketchclub.org or call the office: 215-545-9298.

Gallery hours: Wednesday, Friday, Saturday, Sunday: 1 PM to 5 PM

March 2017

S

Sketch Club Activities

Check-out the Sketch Club Bulletin Board.



Recently, PSC members asked for some method of communicating between members of the PSC community. In response to this request, Board of Directors agreed to add a PSC Bulletin Board to the PSC web-site. You can visit and sign-up for this site at: <http://bbd.sketchclub.org/>.

You can also find the link on the PSC home page. Answers to questions about using the PSC BB are found on the Frequently Asked Questions (FAQ) page: [FAQs](#). The site is

monitored by **Ken Weiner**, PSC Vice-president.

Anyone can view entries on the site but you must register to post topics or responses. For starters, we've built-in several topics. We encourage the creation of new topics as needed.

Try it out. Enhance your creative life.

Gallery hours: Wednesday, Friday, Saturday, Sunday: 1 PM to 5 PM

March 2017

Sketch Club Activities

Internships at the Philadelphia Sketch Club

Working towards a career in the art gallery world? Art history nerd? Budding illustrator? Our summer internships provide qualified applicants with the opportunity to learn what it is like behind the scenes of running an art gallery. The Philadelphia Sketch Club is a unique employer that holds rotating exhibitions, educates artists through our weekly life drawing and printmaking workshops, and guards the history of Philadelphia's artistic culture.



Interning for the Sketch Club is like taking a trip through time. The echo of history can be found in the character of our building, our extensive library, in the exhibitions we run (our Small Oils Show has been held every year since 1865, thank you very much),

and in the voices of past prominent members like Thomas Eakins, Thomas Anshutz, and N. C. Wyeth.

As an intern of the PSC, you will be working with our Gallery Manager to coordinate exhibitions, build upon our social media presence, and engage with PSC members. You will also have the opportunity to assist our Workshop Monitors while practicing life drawing and printmaking.

Qualifications

- Studying for a degree in Graphic Design, Illustration, or a related field
- Experience with the Adobe Suite or Creative Cloud
- Experience with Microsoft Office
- Savvy with social media
- Knowledge of CiviCRM a plus
- Knowledge of WordPress a plus
- Interns will be responsible for bringing their own devices to work on



To Apply

We host most of our internships in the summer, but you are welcome to apply year-round. Send your résumé, a brief cover letter, and work samples to our Gallery Manager, Michelle Lockamy, at executivedirector@sketchclub.org with "Internship" in the subject line.

Thank you for your interest in the Philadelphia Sketch Club!

Gallery hours: Wednesday, Friday, Saturday, Sunday: 1 PM to 5 PM

March 2017

Sketch Club Activities

Critique Night

Next Meeting: March 15th, 2017

Open to PSC Members and Non-Members

RSVP to **Michelle Lockamy** at 215-545-9298 or

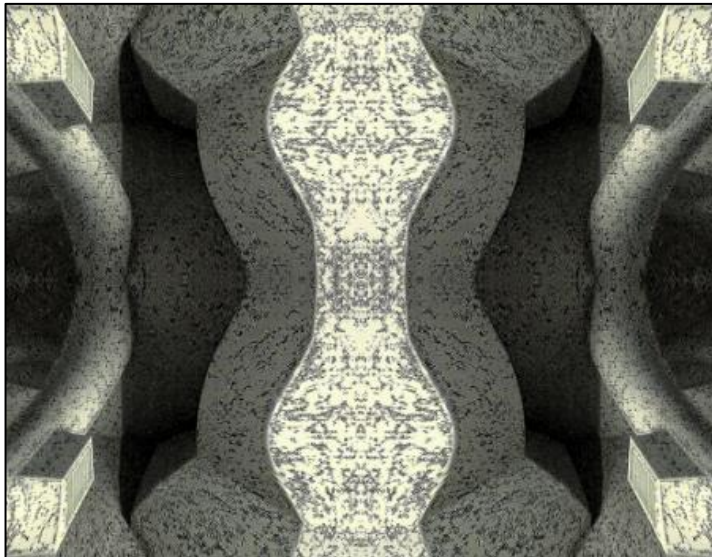
executivedirector@sketchclub.org

Critique Night is held in the Library of the Sketch Club every third Wednesday beginning at 7 PM. Bring work you've finished, work in progress, or just sketches for work you're planning! Photos, digital work, drawings, all mediums are welcome; we can project digital images on a screen for review, so you have the option to show work that may be too big or too heavy to transport to the Club. There is no one individual directing the critique, just your fellow artists and peers. Facilitated/monitored by **Rich Harrington**, PSC President



Photo Circle

Next Meeting: March 9th, 2017 from 6:30 to 8:30 PM



The Photo Circle meets every 2nd Thursday at 6:30 PM. You can contact Steve anytime at si22@drexel.edu or 215-300-9192 (cell). **Steve Iwanczuk**, Photo Circle Monitor and Member of Philadelphia Sketch Club Board of Directors.

Gallery hours: Wednesday, Friday, Saturday, Sunday: 1 PM to 5 PM

March 2017

Sketch Club Activities

Key Circle Volunteers

Key Circle Volunteers: Alice Chung, Wayne Franks, Faad Ghoraishi, Donald Kuetemeyer, Katy Lin, Marilee Morris, Rosa Kim Paik, Lauren Sweeney

The story behind the “Key Circle” volunteer group

There are many types of volunteer activities that are essential to maintaining the Sketch Club as a vibrant art club and showcase for outstanding art. For the last year a small group of member volunteers dubbed the “Key Circle” has been working to help the Club be reliably open during scheduled weekend gallery hours, as well as drop-off and pick-up sessions, jurying sessions, etc. – all the background work that goes into putting on each show.

We are dubbed the “Key Circle” because each of us has direct access to open the club. This also means that one of our 8-member group should be signed up for each session so the other volunteers can be assured of access. Equally importantly, Key Circle members quickly become more familiar with many aspects of Sketch Club functioning – and thus more comfortable handling all manner of situations.

This past year, over 50 total volunteers staffed the galleries on weekends, drop-off and pick-up events. Even though many volunteered just a few times during the year, those numbers added up to fully staffed shows for much of the year, at least until the busy fall season. It would make all the difference going forward if the Key Circle group could be expanded from its current 8 members to 12 or more, and if we could gain a modest increase in volunteering from the group of 50 volunteers, or add a few more volunteers. Perhaps members could add a volunteer session for every show in which they get a work accepted. Then invite your friends and colleagues to visit the club when you are there. Just a thought!

If you are now curious about joining the key circle, or just interested in becoming more knowledgeable about how to do certain things as a regular volunteer, the next time you volunteer ask your Key Circle partner to explain things more fully. Are you mystified by what to do if someone inquires about buying a work of art when no one is there to open the office? How to turn up the thermostat? How to buzz a visitor in? No one learns these things overnight, or just from reading a set of instructions. (However, there is a detailed lime-green Volunteer notebook in the hall outside the office that contains all sorts of useful information about the club.) For those who are considering stepping it up a notch to become a key circle member, consider that volunteering event your first “training session” to become a key circle person.

To get more information, please contact a Key Circle member at info@sketchclub.org



**GALLERY
OPEN**

Admission is Free



Gallery hours: Wednesday, Friday, Saturday, Sunday: 1 PM to 5 PM

March 2017

Sketch Club Activities

Philadelphia Sketch Club Archives

Anti-Slavery Efforts in the Early Days of the Philadelphia Sketch Club

The below excerpts from the Sketch Club's history are presented as a tribute to Black History Month.

Within a month of the Club's founding in 1860 came the succession of the Southern States, followed closely by the Civil War which continued for four years. The Club was very sympathetic to the anti-slavery movement and used their artistic abilities to further this cause. Mostly through the efforts of two of its founders, George F. Bensell and Edmund B. Bensell, the Club created a 30' x 60' illuminated transparency that was displayed at 1210 Chestnut Street on or about November 1, 1864. The transparency, believed to be illuminated by gas lights from behind, was produced at the request of the "Supervisory Committee for Recruiting Colored Troops" to celebrate the adoption, by the state of Maryland, of a new constitution that abolished slavery. The transparency also promoted the reelection of Abraham Lincoln. According to a newspaper clipping in the Abraham Lincoln Papers of the Library of Congress originally sent to Lincoln by Thomas Webster, Chairman of the Supervisory Committee, the transparency was festooned with full-color drawings "executed by the Philadelphia Sketch Club, in the highest style of art." The monumental production of the transparency on Chestnut Street ranked as one of the largest creations of a work of art aimed at influencing public opinion of its time. It was pictured on the front cover of *Frank Leslie's Illustrated Newspaper* on November 19, 1864.

Many members took an active part in the Civil War. William R. McKim was killed in the battle of Balls Bluff in early 1862. Eight of the members joined the 1st Regiment, Gray Reserves, and left Philadelphia for the seat of the war on the 18th of September 1862. In 1864, the Club in a body joined the Republican Invincibles and this company was known as "The Sketch Club Company." Following the Civil War, Edmund Bensell and fellow member Frederick B. Schell helped illustrate William Still's book *The Underground Railroad* which was published in 1872. Still's home which is marked by a historic marker is located near the Sketch Club on 12th Street.

Gallery hours: Wednesday, Friday, Saturday, Sunday: 1 PM to 5 PM

March 2017

Sketch Club Activities

Limited Edition PSC Glassware

We have a limited number of stemless wine glasses which have the Club logo on one side and the Club corporate seal on the reverse. We are offering these for sale at the price of \$15 for two glasses to members while the supply lasts. Place your order by emailing Michelle at executivedirector@sketchclub.org or calling 215-545-9298. Please indicate when you will pick-up and pay for the glasses your order.



Member Get-Together

Ides of March Open House & Pot Luck

Plan to be at the PSC members Ides of March get-together.

Create & bring in a sketch/drawing/painting/whatever for display, discussion, etc. For this event. Easels with clipboards will be set up for temporary exhibit that afternoon. Suggested Theme: "The Not So Enchanted Forest"

- Saturday March 19th.
- 2:00 – 5:00 PM
- Food – 2:30 PM. (Pot Luck)
- Cash Bar
- Music at 3:30 PM



Bring a Friend, Fee=Pay what you wish

Easels with Boards ready for work to be mounted on set up in Stewart Gallery.



Gallery hours: Wednesday, Friday, Saturday, Sunday: 1 PM to 5 PM

March 2017

Help Wanted

HELP WANTED FOR GRANTS

We're working on several projects that could help our Philadelphia Sketch Club enhance our success by serving our members better, as well as more practicing artists, and art lovers among Philadelphians and visitors to the city.

To do this, we need some help. We're seeking more financial backing from foundations in our area through the awarding of grants. This takes a big commitment in time and dedication.

If any of our members want to help and have experience in the process of grant writing, submission and the follow-through, please contact one of us by e-mail at executivedirector@sketchclub.org

Thank you.

Bill Kosman or Bill Patterson.

Gallery hours: Wednesday, Friday, Saturday, Sunday: 1 PM to 5 PM

March 2017

2016 Main Gallery Schedule

Art of the Flower 2017 PSC Exhibition

*Presented in Memory of
Donald C. Meyer*

March 10th through April 1st, 2017

Reception:

Sunday March 12, 2017 2-4 PM



The Art
of the
Flower

*presented in
memory of
Donald C. Meyer*

March 10th through
April 1st, 2016
at the Philadelphia Sketch Club



Gallery hours: Wednesday, Friday, Saturday, Sunday: 1 PM to 5 PM

March 2017

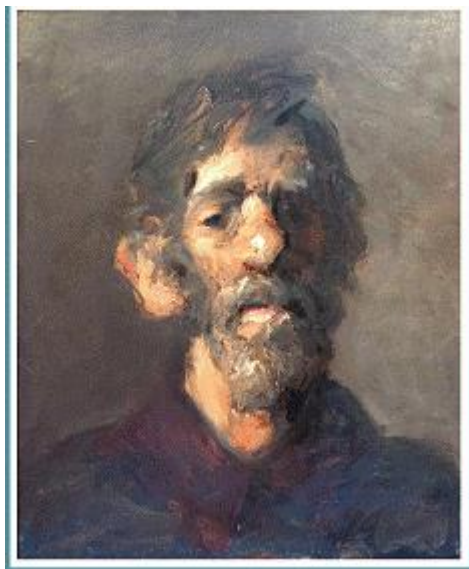
2016 Main Gallery Schedule

Coming: April 14 through May 6

The Philadelphia Sketch Club's 154th Annual Exhibition of Small Oil Paintings

The Philadelphia Sketch Club's upcoming 154th Annual Small Oils Exhibition represents an opportunity for today's artists to connect with many of the great artists of the past. They can have your work exhibited at this prestigious exhibition just as Eakins, Anshutz and N. C. Wyeth have. The 154th Annual Exhibition of Small Oil Paintings presented by the Philadelphia Sketch Club represents one of the longest running and most prestigious juried exhibitions in the country. This year's show runs from April 14 through May 6 with a reception on April 23 from 2 to 4 PM. The exhibition will feature over 150 works by prominent and emerging artists. The exhibition awards are not just certificates and cash, but also the R. Tait McKenzie Small Oils Medal. Dr. McKenzie was an artist who created Olympic medals but he was also a physician who developed many of the modern theories of physical therapy. He designed a medal specifically for this exhibition. In addition to the best three in show awards, there will also be special awards for the best landscape, still life, portrait and abstract. Traditionally, the exhibition also features a work by each of the three jurors. This year's Jurors are Robert Goodman, Aubrey Levinthal and Stefanie Lieberman. Gallery hours at the Philadelphia Sketch Club, 235 S. Camac St., are Wednesday, Friday, Saturday & Sunday from 1 to 5 PM.

[Get the 154th Small Oils Prospectus 2017](#)



Tom Kohlman, *Portrait of Morales*, oil. First Award - 2016 Small Oils Show

Founded in 1860, the Sketch Club is America's oldest artists club. Originally, the show was founded so that artists could display a number of small examples of their works with the hope that a patron would order a larger painting. The size limitation on the paintings is no larger than 20" x 20" excluding frame. Prior medal winners in this exhibition have included Paulette Van Roekens, John Folinsbee, Alice Kent Stoddard, Arthur Meltzer, Antonio Martino, Dorothy Van Loan, Doris Silk, John Redmond and Al Gury



R. Tait McKenzie, Small Oils Medal, 3" dia. bronze

Gallery hours: Wednesday, Friday, Saturday, Sunday: 1 PM to 5 PM

March 2017

2016 Stuart Gallery Schedule

March 2017 Events to be Announced

Exhibition Schedule and Events Calendar Always Available at sketchclub.org

Don't forget, you can always see the schedule for the coming year on the PSC web-site. Go to the Calendars/Events menu and select Exhibition Schedule. Here's the link:

<http://sketchclub.org/exhibitions/>. And new for this year, we've added an Events Calendar under the Calendars/Events menu. This calendar will show a complete list of the dates for important activities and deadlines. See it here: <http://sketchclub.org/calendar/>



Gallery hours: Wednesday, Friday, Saturday, Sunday: 1 PM to 5 PM

March 2017

Sketch Club Open Workshop Schedule

All workshops are open to the public. There is no need to register before attending. You do NOT have to be a member of the Philadelphia Sketch Club to participate in the workshops. Our workshops are open to anyone who is interested in drawing, painting or printmaking. All skill levels are welcome. Fees: Model workshops: \$8/session members, \$9/session for non-PSC members; Printmaking workshop: \$10/session; All workshops \$6 for full-time students. Monitored by PSC members.

Life Model	Costumed Model	Printmaking
<p>Mondays – Extended pose (multi-session): 6:30 PM-9:30PM</p> <p>Monitors: Robert Bohne, Vince Docktor, Dan Kuetemeyer</p> <p>Tuesdays – Extended pose: 12:00 PM to 3:00 PM Monitor: Jacqueline Barnett</p> <p>Wednesdays – Extended pose: 6:30 to 9:30 PM Monitor: Vince Docktor</p> <p>Saturdays – Extended pose: 9:30 AM to 12:30 PM Monitor: Vince Docktor</p>	<p>Thursdays</p> <p>Extended pose</p> <p>12:00 PM to 3:00 PM Monitor: Bob Bohne.</p>	<p>Tuesdays</p> <p>10:00 AM to 2:00 PM Monitor: Elizabeth H. MacDonald</p>

Please Note: Those who use oil paints should bring their own container(s) to remove used solvents. Odorless solvents only.

Gallery hours: Wednesday, Friday, Saturday, Sunday: 1 PM to 5 PM

March 2017

Art Natters: Members News

PSC member **Brenda L Bechtel** is pleased to announce that she has been invited by Founding Signature and Master Members of the Bennington Center for the Arts as one of 26 Artists chosen from applicants throughout the United States and Canada as an Artist Member of the "Bennington Collective". This is "a very exclusive group of representational artists accepted based on a rigorous and meticulous jurying process" according to Shirley Hutchins, Gallery Director, <http://www.thebennington.org/> Now,



Ode to the Coral Nimbus

on to some current shows. Lyme Art Association, through March 11, includes "Blue Skies Smiling at Me" Oil on Linen in the 25th Associate Member Exhibition, juried by Patricia Shippee. Cape Cod Art Association



Long Walks with Mom

includes "Long Walks with Mom" Oil on Canvas in "Artist's Visions", juried by Margaret McWethy through March 12. Thank you to Judge of Awards, Lorena Pugh for recognizing "Lacework on Montague" Transparent Watercolour with an Honorable Mention in South County Art Association's current juried Exhibition, "Open Paint, Print & Drawing I" on display in South Kingston, RI through March 5. Provincetown is particularly beautiful and peaceful during late winter and Brenda is happy to exhibit her Oil on Canvas, "Cliff Road Moonrise" at the

Provincetown Art Association and Museum in the upcoming Member Salon, February 28 - April 30, 2017. To learn more www.BrendaLBechtel.com

Gallery hours: Wednesday, Friday, Saturday, Sunday: 1 PM to 5 PM

March 2017

Art Natters: Members News

In January, PSC member **Don Brewer** was awarded a scholarship to study The Elements of Art at The Barnes Foundation, a fourteen-week course studying the Violette De Mazia method of seeing art. The classes take place in the galleries of the Barnes, the class studies individual paintings at length and then write about our experience. Learning new ways to talk about art, describe seeing art and understanding the intent of the artist is valuable to me as an art blogger. The experience is amazing, I am humbled to be able to study some of the greatest art in the world. Please follow DoNArTNeWs online.

Gross McCleaf Gallery will present a solo exhibition of PSC member **Patrick Connors'** Fairmount Park landscapes, small to large oils, this April.

Patrick Connors *Reveries*

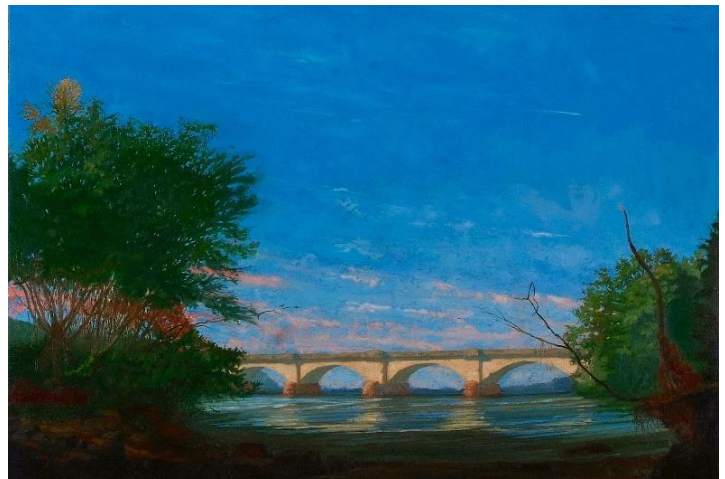
April 5 - 28, 2017

Opening Reception: Friday, April 7, 5 - 7pm

Gross McCleaf Gallery
127 S. Sixteenth Street
Philadelphia, PA 19102
215.665.8138
www.grossmccleaf.com

Gallery Hours: Tues. - Sat. from 10 - 5pm

Late Summer Afternoon, View from Long's Inlet, oil on linen, 26 x 38 inches



Gallery hours: Wednesday, Friday, Saturday, Sunday: 1 PM to 5 PM

March 2017

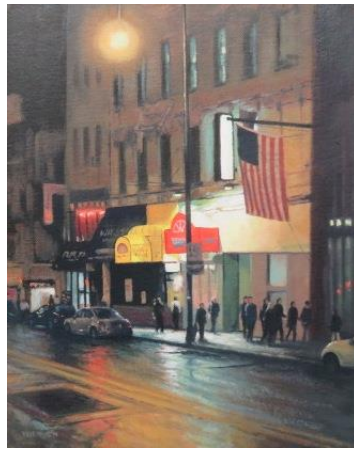
Art Natters: Members News

PSC member **Michel Budden** one man show

- Hughes Gallery
Boca Grande FL
March 2017
- Opening,
February 27th,
10am-5pm
- Reception 6-9pm, 2/27/17
- artwork preview at:
www.hughesgallery.net



Rainy Day Vendor



Night Life



Carousel 2 Central Park

Gallery hours: Wednesday, Friday, Saturday, Sunday: 1 PM to 5 PM

March 2017

Art Natters: Members News

PSC member **Nancy E. F. Halbert** will be teaching a four week Expressive Figure Workshop in Drawing and Painting at the Woodmere Art Museum, starting Wednesday, March 14th, 1:30-4:30pm. This workshop could radically change your way of thinking about figure painting.

Whether you are a realist, think abstractly, or stuck in a rut with color, proportion, environment, or pose, this class will open your eyes to new ways of seeing and working with a model. We will also explore mixing materials, such as charcoal, watercolor, ink, oil and acrylic paint.



Untitled

www.woodmereartmuseum.org

She is also teaching several pastel drawing and painting courses at the Main Line Art Center, Haverford, PA and the Creutzberg Campus of Continuing Education through Lower Merion School Night.



Wedding Party 1

PSC member **Doris Peltzman** will have a solo exhibit at the Main Line Art Center's Welcome Gallery from March 4-May1, 2017. Her oils will be located on both the first and second floor of the art center.

Paintings will include oils on a variety of surfaces: canvas, linen, birch, board and plexiglas. Paintings displayed will include very small works, tondos and larger paintings. large. Main Line Art Center is located at 746 Panmure Rd. Haverford, P.A. 19041.



Daffodils



Oil on Round Plexiglass



Iris, Gerber Rose

Gallery hours: Wednesday, Friday, Saturday, Sunday: 1 PM to 5 PM

March 2017

Calls for Work and Notices



Join us for a week of plein air painting in verdant and historic Bucks County, located in the Philadelphia countryside. Paint the rolling landscapes, lakes and rivers, covered bridges, stone farm houses, and historic estates that have inspired artists for more than a century. Jointly hosted by Bucks County Community College, the Central Bucks Chamber of Commerce and Alan Fetterman Fine Arts, proceeds will support art scholarships and arts programming in Bucks County.

\$15,000 in Awards

Best of Show \$5,000 and Alan Fetterman Fine Arts Medal
2nd Prize \$3,000
3rd Prize \$1,500
Bucks County Resident Artist Prize \$1,000
People's Choice Award \$500
5 Honorable Mention Awards \$500 each
Quick Draw Prizes totaling \$1,500

Eligibility

The Bucks County Plein Air competition is open to all painters age 18 and older. All entrants will be juried, and the total number of participants will be limited to 50. At least 10 participating artists will be residents of Bucks County, PA.

Submission Requirements

Entries must be submitted electronically at <https://goo.gl/wbs0Gp>, along with a non-refundable application fee of \$50.

Artists must submit three (3) digital images of plein air paintings made within the past two years. Images must be JPEG format at 300 ppi and sized to 1900 x 4000 pixels at their longest dimension. Refer to the Help menu on the Juried Art Services site.

An artist biography (up to 1000 characters) and photo (jpg - at least 6" and 300 ppi) is required.

Deadline for entries is March 8, 11:59 p.m. EDT

Important Dates

March 8	Online application deadline
March 22	All competing artists notified by email
March 31	Selected Festival Artists confirm their participation
April 17	Host housing assignments complete
April 21	Names of Festival Artists posted at BucksCountyPleinAir.org
June 5	Artist registration, orientation, canvas stamping and welcome lunch
June 5-8	Artists paint in Bucks County
June 9	Artist reception and award ceremony, collectors' preview and gala
June 10-11	Quick Draw competition, exhibition and sale, all open to the public
June 11	Artists check-out at 4 PM

Click the link: [Get the Prospectus](#)

Gallery hours: Wednesday, Friday, Saturday, Sunday: 1 PM to 5 PM

March 2017

Calls for Work and Notices

Deb K Simon was invited to participate in the annual Coronado Artist Exhibition March 22, 2017 at Coronado Beach Club, Highland Beach, FL. This annual fundraiser is from 5-8 pm. "Moon River" is one of the paintings that will be on view.

Needed: Painting Donations to Help North-Philly Senior Center

The North-City Congress serves its more than 300 members in three ways. 1. It offers a wealth of activities – from dance and exercise to card games, knitting and excursions; 2. it gives counseling on assistance programs from government agencies and on members' personal concerns; and 3. it offers the same counseling to seniors who cannot leave their homes.

The Congress is holding a gala on June 8, 2017, to raise money to support its programs, including funds to buy needed tables and several televisions stolen in a recent burglary. City officials and other community leaders are being invited. The Congress would like perhaps 4 or 5 local artists to contribute paintings to be sold in a silent auction.

The Sketch Club could help. I've been working with the Congress and will contribute one or two paintings. If you want to contribute a painting or want any more information, please contact me.

Thank you in advance.

Contact PSC member **Bill Kosman** – billkosman@gmail.com

Dale Levy will show her recent work *New Directions* at The Cosmopolitan Club.

1616 Latimer Street

Philadelphia, PA 19103

Artist Reception:

Friday, March 17, 2017, 5-7 PM

Exhibition Dates;

March 17, through April 20, 2017



New Directions

Gallery hours: Wednesday, Friday, Saturday, Sunday: 1 PM to 5 PM

March 2017

Calls for Work and Notices

Or Hadash Staircase Gallery

Reconstructionist Congregation Or Hadash in Fort Washington, PA is housed in a historic building, formerly the summer mansion of well-known society families. We have adapted a formerly grand entrance staircase into what we call The Staircase Gallery.

The Staircase Gallery has been having 3 shows a year for over 14 years. We have had shows featuring a diverse group of painters, photographers, children's art, and illustrators. We have incorporated writings and travel logs into exhibits for multi-talented artists who work in multiple mediums.

We are always looking for local artists who would like to show their work. The application process is to simply let us know of your interest, sending us a link to a site where we can see your work. If the Gallery committee feels your work would work in our space, we will contact you to schedule a show. The school students pass through the gallery so we must consider what is appropriate viewing for them in our decision making process. Many artists make a list of prices available for sales. We provide assistance in the hanging of the show and let the artist know what supporting documents are typically displayed.

We are currently scheduling for the 2017 season and going forward. If you would like to have a show in our unique and charming gallery, please let us know at mikeoswald@comcast.net. We will start the process and let you know what the steps are if we go forward.

Academy House Exhibition Opportunity

The Academy House art committee is now looking for pieces to display in our lobby starting sometime in April 2017.

If any of your artists at the Philadelphia Sketch Club are interested, ask them to stop into the lobby (which now can be accessed only through 251 S. 15th Street) and look at the spaces currently being used. (The two pieces on the lobby level are smaller than we would prefer; the piece on the landing is an appropriate size.) If they think they have work that would be suitable for us, ask them to send photos and dimensions and we will take them up for consideration. Pieces displayed can be for sale, though the condo asks 20% of the selling price.

Photos can be emailed to this address or dropped off at the front desk with my name on the envelope.

Thanks,
Michael Goldman
academyhousearts@gmail.com
1425 Locust Street
Philadelphia, PA 19102

Gallery hours: Wednesday, Friday, Saturday, Sunday: 1 PM to 5 PM

March 2017

Calls for Work and Notices

Good Reads: Members Suggestions

Do you have a favorite? Share it with other PSC members here. Send your info to the portfolio@sketchclub.org.

This month, PSC member, **Patricia Ilves-Corressel** highly recommends the following links that provide in-depth information about Canadian artists comprising the Group of Seven.

- <http://www.arthistoryarchive.com/arthistory/canadian/The-Group-of-Seven.html>
- <http://www.northernontario.travel/group-of-seven/group-of-seven>
- <https://www.thestar.com/entertainment/visualarts/2016/07/01/this-lawren-harris-gossip-as-delicious-as-ever.html>
- <http://www.arthistoryarchive.com/arthistory/canadian/Lawren-Harris.html>

Emily Carr, may be the most famous Canadian woman painter, was later included into the group of seven. Here's a link: <http://www.arthistoryarchive.com/arthistory/canadian/Emily-Carr.html>

Something you find interesting that you want to share? Send it to portfolio@sketchclub.org to be included in the Portfolio

Member Classifieds

Photography Services for Artists

Do you need high-quality digital images of your work? Is glare a problem? Color balance not quite right? I can help you get great images of your 2-D or 3-D work suitable for digital file output or output for presentation and hard-copy presentation. I offer flexible availability, willingness to travel, special pricing for Sketch Club members.

Contact PSC member **Ken Weiner** at info@sketchclub.org.

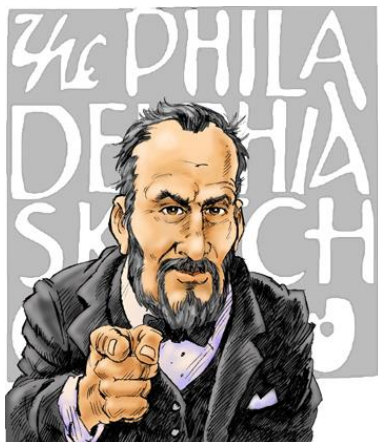
Seeking Framers

Sketch Club members frequently ask about framing services. If you wish to provide framing services to PSC members, please contact the PSC at info@sketchclub.org or call the PSC office: 215 545-9298

Gallery hours: Wednesday, Friday, Saturday, Sunday: 1 PM to 5 PM

March 2017

Call for Volunteers



We have important positions within the PSC that need volunteers to take over! Contact Faad Ghoraishi at to help out your club with future events.

The Portfolio: The newsletter of the Philadelphia Sketch Club is published monthly. Editor: Ken Weiner;
Technical support and Web Master: Ken Weiner

Send your member news, announcements and corrections to portfolio@sketchclub.org. The due date for all materials is one week before the end of the month.

Back issues of the Portfolio are available at: <http://sketchclub.org/portfolio-archive/>

The Philadelphia Sketch Club

235 S Camac Street
Philadelphia, PA 19107
(215) 545-9298
<http://sketchclub.org/>
executivedirector@sketchclub.org

Gallery Manager: Michelle Lockamy

Officers:

- President: Richard Harrington
- Vice President: Kenneth Weiner
- Secretary: Fran Carter
- Treasurer: William Patterson

Board of Directors

- Vincent Docktor
- Melanie Dion
- Stephen Iwanczuk
- William Kosman
- Kevin Myers
- Nancy H. Mills
- Brian Siegel
- Charles F. Tarr
- Joe Winter