

Gallery hours: Wednesday, Friday, Saturday, Sunday: 1 PM to 5 PM

May 2017



This Month's Portfolio

Support the Sketch Club	2
Membership	5
Sketch Club Activities	7
Member Activities	11
Help Wanted	12
2016 Main Gallery Schedule	13
2016 Stuart Gallery Schedule	14
Sketch Club Open Workshop Schedule	15
Art Natters: Members News	16
Calls for Work and Notices	21
Member Classifieds	24
Call for Volunteers	25

Send your member news, announcements and corrections to portfolio@sketchclub.org. The deadline for ALL submissions is 1-week before the end of the month.

Reminder: It's never too late. You can always renew your membership

You may pay online at

<http://sketchclub.org/annual-dues-payment/>

or mail your check to:

The Philadelphia Sketch Club

235 S. Camac St.

Philadelphia, PA 19107

For questions please contact the Gallery

Manager at 213335-545-9298 or email:

executivedirector@sketchclub.org

Late Breaking News – See items that were submitted after the publication date. Go to:

info@sketchclub.org

The PSC general email is: [info@sketchclub](mailto:info@sketchclub.org)

Gallery hours: Wednesday, Friday, Saturday, Sunday: 1 PM to 5 PM

May 2017

Support the Sketch Club

Contribute

Please consider making your tax-deductible contribution now. These funds will be put to good use providing enhanced services to our members and friends.

Membership dues cover only a small portion of the PSC's operating expenses. Competition for funding for arts organizations like the Sketch Club is increasingly competitive and total funding for the arts is shrinking. Your additional support will keep the PSC an active support for visual artists in the Metropolitan Philadelphia area.

The Philadelphia Sketch Club is an IRS designated 501(c) (3) non-profit organization which allows your donations to be tax deductible.

You can call the office at 215-545-9298, mail checks to the Sketch Club or visit the Contribute page of our Website.

Visit our **Contribute** page of our website to give online at:

<http://sketchclub.org/support-us/>

Smile.Amazon.Com

Support the Sketch Club when you purchase from Amazon, use Amazon Smile
It costs you nothing and makes money for the PSC

The Sketch Club's AmazonSmile Link: <http://smile.amazon.com>

Thank you for your participation in the AmazonSmile program.

Purchases made by Sketch Club supporters using AmazonSmile in May resulted in a \$27.15 AmazonSmile contribution to the PSC. It's not much, but every cent helps. So don't forget, use the above link when purchasing from Amazon and increase the PSC's income.

What is AmazonSmile?

Amazon Smile is a simple and automatic way for you to support your favorite charitable organization every time you shop, at no cost to you. When you shop at smile.amazon.com, you'll find the exact same low prices, vast selection and convenient shopping experience as Amazon.com, with the added bonus that Amazon will donate a portion of the purchase price to your favorite charitable organization. You can choose from nearly one million organizations to support.

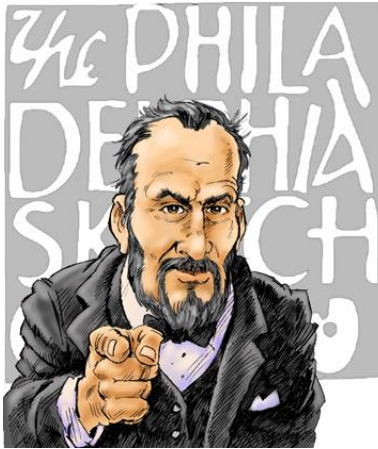
To learn more about Amazon Smile go to: <http://smile.amazon.com/gp/aw/ch/about>

Gallery hours: Wednesday, Friday, Saturday, Sunday: 1 PM to 5 PM

May 2017

Support the Sketch Club

Volunteers are **Always** needed!



We are now seeking a PSC member with great organizational skills to assist in managing the Member Dinner arrangements. If you want to get involved in this important PSC activity, please contact us ACAP at: executivedirector@sketchclub.org

Other volunteer opportunities:

- Gallery Sitting
- Accept/Return Work
- Special Projects
- Assist with Exhibition Tasks

Help the PSC with important positions within the PSC that need volunteers to take over! Contact [Faad Ghoraishi](#) at to help your club with future events

PSC request for VOLUNTEERS for outdoor concrete work and carpentry

The Board has decided to do an improvement project this summer to concrete the floor in our Garden Shed and to repair the shed door. We are asking for Volunteers to do this project in-house.

Mutually agreed upon weekends will be arranged, first for the concrete work and a second weekend for the repair of the shed door.

Please email the Club at executivedirector@sketchclub.org or telephone us at 215-545-9298 leaving your name and a phone number where you can be reached.

Refreshments will be served!

The Garden Committee has been doing a superb job in planting and maintaining the grounds in the courtyard. The renovation of the Garden Shed will be a major improvement for all of us to enjoy.

I would very much appreciate your help.

Chuck Tarr,
House Chair

Gallery hours: Wednesday, Friday, Saturday, Sunday: 1 PM to 5 PM

May 2017

Support the Sketch Club

PHOTOLounge

The PHOTOLounge supports the Philadelphia Sketch Club and its members:

Sketch Club Members receive a 15% discount at PHOTOLounge.

Use online promo code "sketch".

The PHOTOLounge is located at 1909 Chestnut St. Philadelphia PA 19103.

For nearly 20 years, PHOTOLounge's focus has been the simple idea that pictures should be beautiful, affordable, and long lasting. We're a very adept photo lab with diverse services from iPhone printing to shoebox scanning. You can bring us film for processing, and also order prints online, or from the App. Come in and print your world.

Sketch Club Members receive a 15% discount at PHOTOLounge.

Use online promo code "sketch".

267-322-6651 – www.myphotolounge.com

Sketch Club members receive 20% discount




We offer a variety of framing materials and techniques including:

- Archival / conservation treatment • Specialty mats (Linen, Suede, Silk)
- Stretching / Blocking of needleart and oils
- 1000's of moulding choices • 22 karat finished corner frames • Memorabilia framing
- Custom toning / coloring • Decorative mat cuts • French matting • Fillets
- Mirrors • Shadowboxing • Dry Mounting

www.CanalFrame.com • CanalFrame@comcast.net • 215-493-3660

1093 General Greene Road, Washington Crossing, PA 18977

Framing Family Treasures for over 20 Years



Gallery hours: Wednesday, Friday, Saturday, Sunday: 1 PM to 5 PM

May 2017

Support the Sketch Club

Like, Link & Share

If you're not following the Philadelphia Sketch Club on Facebook re-tweeting Sketch Club tweets yet, it's time that you did. We have well over 2000 Facebook followers. Get the word out about the Sketch Club. Please click the like button and share your comments and invite your friends to like our page.

Follow @PhilaSketchClub on Twitter, we have almost 400 followers. Please click the heart button and re-tweet our announcements.

Include links on your website, blogs and social media to The Philadelphia Sketch Club to increase traction across social media platforms.

Follow us on Facebook, Twitter and Instagram now!

Thanks to Don Brewer and Michelle Lockamy for managing PSC social media sites.



Membership

Not a PSC Member?: Join Now!

If you're reading this edition of the Portfolio and you're not a member of the PSC, you should consider joining the more than 200 other Philadelphia area artists who have. The PSC is one of the most active visual art venues serving center city Philadelphia. The PSC is a hands-on organization that offers its members the opportunity to participate in all aspects of creating and presenting work to the public. It presents over 20 scheduled group and solo exhibitions annually and offers a wide range of daily workshops. [Get info and an application here.](#)

If you are a member of the PSC, please feel free to share the Portfolio with your artist friends and encourage them to become members.

Recent New Members:

Sally Eisenberg

Suzanne Dupoantis

Barbara Tracy

Harriet Kline

Joseph Sasarak



Gallery hours: Wednesday, Friday, Saturday, Sunday: 1 PM to 5 PM

May 2017

Membership

Membership Renewal

You can check the status of your membership by going to the Current Members page on the PSC web-site: <http://sketchclub.org/sample-page/memberspace/>. All current members are listed. An asterisk (*) means that the membership has expired but is within the 60-day grace period for renewal. Names in red are active links to the individual's web site.

Renew Now! <http://sketchclub.org/annual-dues-payment/>

If you have any questions about your membership, please don't hesitate contact us at membership@sketchclub.org or call the office: 215-545-9298.

Gallery hours: Wednesday, Friday, Saturday, Sunday: 1 PM to 5 PM

May 2017

Sketch Club Activities

Internships at the Philadelphia Sketch Club

Working towards a career in the art gallery world? Art history nerd? Budding illustrator? Our summer internships provide qualified applicants with the opportunity to learn what it is like behind the scenes of running an art gallery. The Philadelphia Sketch Club is a unique employer that holds rotating exhibitions, educates artists through our weekly life drawing and printmaking workshops, and guards the history of Philadelphia's artistic culture.



Interning for the Sketch Club is like taking a trip through time. The echo of history can be found in the character of our building, our extensive library, in the exhibitions we run (our Small Oils Show has been held every year since 1865, thank you very much), and in the voices of past prominent members like Thomas Eakins, Thomas Anshutz, and N. C. Wyeth.

As an intern of the PSC, you will be working with our Gallery Manager to coordinate exhibitions, build upon our social media presence, and engage with PSC members. You will also have the opportunity to assist our Workshop Monitors while practicing life drawing and printmaking.

Qualifications

- Studying for a degree in Graphic Design, Illustration, or a related field
- Experience with the Adobe Suite or Creative Cloud
- Experience with Microsoft Office
- Savvy with social media
- Knowledge of CiviCRM a plus
- Knowledge of WordPress a plus
- Interns will be responsible for bringing their own devices to work on



To Apply

We host most of our internships in the summer, but you are welcome to apply year-round. Send your résumé, a brief cover letter, and work samples to our Gallery Manager, Michelle Lockamy, at executivedirector@sketchclub.org with "Internship" in the subject line.

Thank you for your interest in the Philadelphia Sketch Club!

Gallery hours: Wednesday, Friday, Saturday, Sunday: 1 PM to 5 PM

May 2017

Sketch Club Activities

Critique Night

Next Meeting: May 17th, 2017

Open to PSC Members and Non-Members

RSVP to **Michelle Lockamy** at 215-545-9298 or

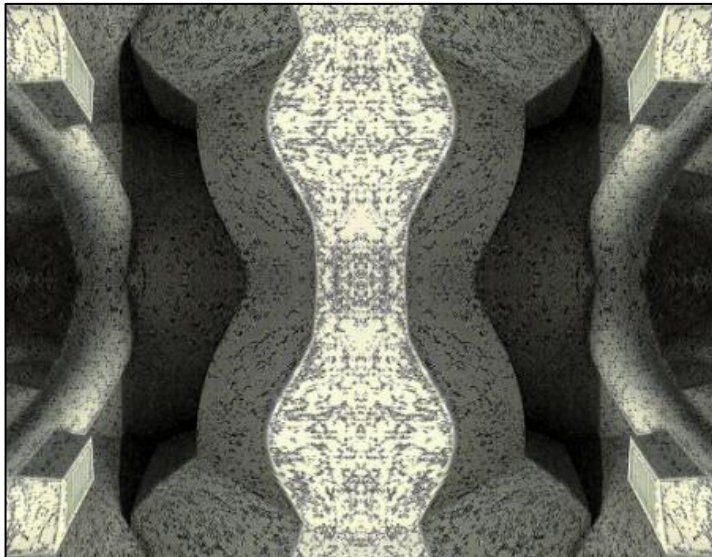
executivedirector@sketchclub.org

Critique Night is held in the Library of the Sketch Club every third Wednesday beginning at 7 PM. Bring work you've finished, work in progress, or just sketches for work you're planning! Photos, digital work, drawings, all mediums are welcome; we can project digital images on a screen for review, so you have the option to show work that may be too big or too heavy to transport to the Club. There is no one individual directing the critique, just your fellow artists and peers. Facilitated/monitored by **Rich Harrington**, PSC President



Photo Circle

Next Meeting: May 11th, 2017 from 6:30 to 8:30 PM



The Photo Circle meets every 2nd Thursday at 6:30 PM. You can contact Steve anytime at si22@drexel.edu or 215-300-9192 (cell). **Steve Iwanczuk**, Photo Circle Monitor and Member of Philadelphia Sketch Club Board of Directors.

Gallery hours: Wednesday, Friday, Saturday, Sunday: 1 PM to 5 PM

May 2017

Sketch Club Activities

Key Circle Volunteers

Key Circle Volunteers: Alice Chung, Wayne Franks, Faad Ghoraishi, Donald Kuetemeyer, Katy Lin, Marilee Morris, Rosa Kim Paik, Lauren Sweeney, Gail Williams

The story behind the “Key Circle” volunteer group

There are many types of volunteer activities that are essential to maintaining the Sketch Club as a vibrant art club and showcase for outstanding art. For the last year a small group of member volunteers dubbed the “Key Circle” has been working to help the Club be reliably open during scheduled weekend gallery hours, as well as drop-off and pick-up sessions, jurying sessions, etc. – all the background work that goes into putting on each show.

We are dubbed the “Key Circle” because each of us has direct access to open the club. This also means that one of our 8-member group should be signed up for each session so the other volunteers can be assured of access. Equally importantly, Key Circle members quickly become more familiar with many aspects of Sketch Club functioning – and thus more comfortable handling all manner of situations.

This past year, over 50 total volunteers staffed the galleries on weekends, drop-off and pick-up events. Even though many volunteered just a few times during the year, those numbers added up to fully staffed shows for much of the year, at least until the busy fall season. It would make all the difference going forward if the Key Circle group could be expanded from its current 8 members to 12 or more, and if we could gain a modest increase in volunteering from the group of 50 volunteers, or add a few more volunteers. Perhaps members could add a volunteer session for every show in which they get a work accepted. Then invite your friends and colleagues to visit the club when you are there. Just a thought!

If you are now curious about joining the key circle, or just interested in becoming more knowledgeable about how to do certain things as a regular volunteer, the next time you volunteer ask your Key Circle partner to explain things more fully. Are you mystified by what to do if someone inquires about buying a work of art when no one is there to open the office? How to turn up the thermostat? How to buzz a visitor in? No one learns these things overnight, or just from reading a set of instructions. (However, there is a detailed lime-green Volunteer notebook in the hall outside the office that contains all sorts of useful information about the club.) For those who are considering stepping it up a notch to become a key circle member, consider that volunteering event your first “training session” to become a key circle person.

To get more information, please contact a Key Circle member at info@sketchclub.org



**GALLERY
OPEN**

Admission is Free



Gallery hours: Wednesday, Friday, Saturday, Sunday: 1 PM to 5 PM

May 2017

Sketch Club Activities

Limited Edition PSC Glassware: Still a few left

We have a limited number of stemless wine glasses which have the Club logo on one side and the Club corporate seal on the reverse. We are offering these for sale at the price of \$15 for two glasses to members while the supply lasts. Place your order by emailing Michelle at executivedirector@sketchclub.org or calling 215-545-9298. Please indicate when you will pick-up and pay for the glasses your order.



Gallery hours: Wednesday, Friday, Saturday, Sunday: 1 PM to 5 PM

May 2017

Member Activities

Annual Meeting and Dinner Friday May 12th, 2017

Dinner Open to the Public
Please RSVP to Michelle in the PSC office
Wednesday May 10th, 2017.

AGENDA

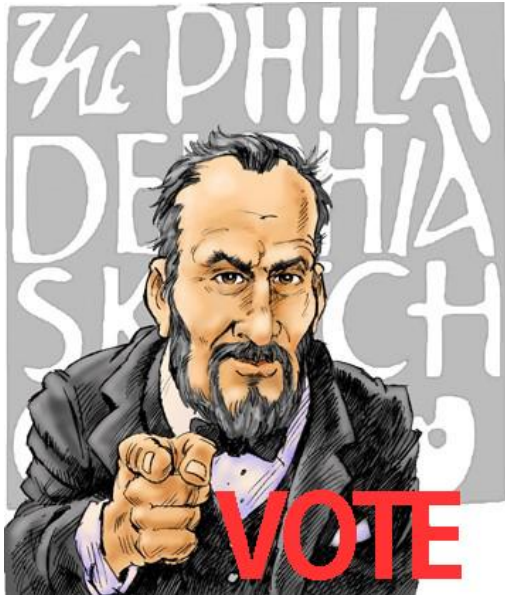
- 5:30- Social Period Begins
- 6:15- Board Elections
- 7:15- Dinner

DINNER

- Members - \$16
- Guests - \$18



Sketch Club Election of Board of Directors



- All Sketch Club members in good standing are eligible to vote.
- Members will receive email updates.

Gallery hours: Wednesday, Friday, Saturday, Sunday: 1 PM to 5 PM

May 2017

Member Activities

May 21st BBQ for PSC Members & their Guests

Join us for a BBQ in the garden (weather permitting)

Still Life/Plein Air Painting

- 12-2:45 PM still life/plein air
- 3:30 -5 PM Live Music by the Warehouse Winos
- BBQ \$10 per person (menu to be revised in event of rain)



Help Wanted

HELP WANTED FOR GRANTS

We're working on several projects that could help our Philadelphia Sketch Club enhance our success by serving our members better, as well as more practicing artists, and art lovers among Philadelphians and visitors to the city.

To do this, we need some help. We're seeking more financial backing from foundations in our area through the awarding of grants. This takes a big commitment in time and dedication.

If any of our members want to help and have experience in the process of grant writing, submission and the follow-through, please contact one of us by e-mail at executivedirector@sketchclub.org

Thank you.

Bill Kosman or Bill Patterson.

Gallery hours: Wednesday, Friday, Saturday, Sunday: 1 PM to 5 PM

May 2017

2016 Main Gallery Schedule

Main Gallery: The 2017 Workshop Show*

From May 19 to June 3, 2017 Closed non-juried show Chair: Jacqueline Barnett

- Delivery: May 12, 13, 2017 1-5 PM
- Reception: Sunday May 28, 2017 2-4 PM
- Pickup: June 4, 7, 2017

*Open exclusively to PSC workshop participants.

Coming Next in the Main Gallery: the PHOTOgraphy 2017 Exhibition



Online Entry Deadline: Sunday May 21, 2017 Midnight

Call for Entries!

[Get the prospectus and on-line entry form](#)



Gallery hours: Wednesday, Friday, Saturday, Sunday: 1 PM to 5 PM

May 2017

2016 Stuart Gallery Schedule

PSC 2016 Winners Show: Extended through May

Exhibition Schedule and Events Calendar Always Available at sketchclub.org

Don't forget, you can always see the schedule for the coming year on the PSC web-site. Go to the Calendars/Events menu and select Exhibition Schedule. Here's the link:

<http://sketchclub.org/exhibitions/>. And new for this year, we've added an Events Calendar under the Calendars/Events menu. This calendar will show a complete list of the dates for important activities and deadlines. See it here: <http://sketchclub.org/calendar/>

Gallery hours: Wednesday, Friday, Saturday, Sunday: 1 PM to 5 PM

May 2017

Sketch Club Open Workshop Schedule

All workshops are open to the public. There is no need to register before attending. You do NOT have to be a member of the Philadelphia Sketch Club to participate in the workshops. Our workshops are open to anyone who is interested in drawing, painting or printmaking. All skill levels are welcome. Fees: Model workshops: \$8/session members, \$9/session for non-PSC members; Printmaking workshop: \$10/session; All workshops \$6 for full-time students. Monitored by PSC members.

Life Model	Costumed Model	Printmaking
<p>Mondays – Extended pose (multi-session): 6:30 PM-9:30PM</p> <p>Monitors: Robert Bohne, Vince Docktor, Dan Kuetemeyer</p> <p>Tuesdays – Extended pose: 12:00 PM to 3:00 PM Monitor: Jacqueline Barnett</p> <p>Wednesdays – Extended pose: 6:30 to 9:30 PM Monitor: Vince Docktor</p> <p>Saturdays – Extended pose: 9:30 AM to 12:30 PM Monitor: Vince Docktor</p>	<p>Thursdays</p> <p>Extended pose 12:00 PM to 3:00 PM Monitor: Bob Bohne.</p>	<p>Tuesdays</p> <p>10:00 AM to 2:00 PM Monitor: Elizabeth H. MacDonald</p>

Please Note: Those who use oil paints should bring their own container(s) to remove used solvents. Odorless solvents only.

Gallery hours: Wednesday, Friday, Saturday, Sunday: 1 PM to 5 PM

May 2017

Art Natters: Members News

PSC member **Alice Chung** will be exhibiting 7 oil and Acrylic paintings at Henry Gallery (Penn State Great Valley) from May 24 to Aug 25, 2017

She is working as a president of Philadelphia Arts Connection (PAC) which is Korean American Professional Artist group and this exhibition is PAC 's 10th exhibition since founded in 2010

Reception: May 24 (Wed) 5 : 30 PM - 7 PM

Henry Gallery (Penn State Great Valley)
30 East Swedesford Road
Malvern PA 19335



Journey of Life

PSC member, **Ben Cohen** was awarded FIRST PLACE (large works) in the New Jersey Pastel Painters Society – May 2017 Art Show at the Cove Gallery, NJ

NAUDAIN STREET ART COLLABORATIVE
presents
EMILY SQUIRES LEVINE
KAREN VILLARREAL

"SPRING" polymer. 2" x 7 1/2"

"SUNNY SPOT," oil on linen
20" x 20"

with Special Guest Artist
ANNIE STONE

Saturday May 6, 2017
11am to 7pm

AGELESS GARDENS GALLERY
2503 NAUDAIN STREET, PHILADELPHIA, PA 19146
exhibit continues through June 3 by appointment only
contact: naudainartcollaborative@gmail.com



PSC member, **Bhavisha Patel**, is hosting an art show for the Naudain Street Art Collaborative featuring Karen Villarreal and Emily Squires Levine at her home gallery:

2503 Naudain Street
Philadelphia, PA

Saturday May 6 from 11am to 7pm.

Also showing is guest artist Annie Stone.

Gallery hours: Wednesday, Friday, Saturday, Sunday: 1 PM to 5 PM

May 2017

Art Natters: Members News

PSC member, **Leni Paquet-Morante** of Mercerville, New Jersey has been awarded the October 2017 Lacawac Artist Residency at the Lacawac Field Station, Lake Ariel, PA, where she will focus on painting during the two-week period.

She will also have a solo exhibit at Princeton University in July/August this summer, and her painting "Forysthia on the Creek" was accepted into the Ellarslie Open 34 exhibit at the Trenton City Museum, NJ, which runs from May 6 through June 26th 2017. Artist website is



Gunpower River, Summer Haze

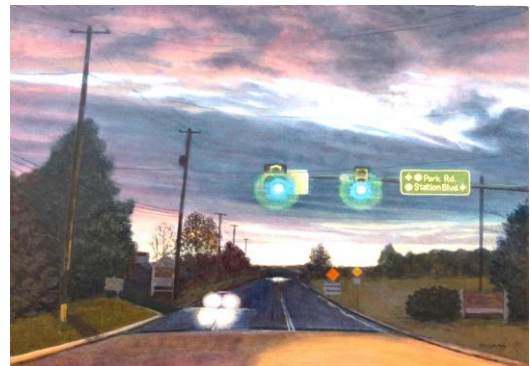
PSC member, **Marie Wolfington Jones** has paintings on view April 29 - May 14 at the Yellow Springs Art Show and Sale in Chester Springs, PA.

She will also be participating in the Chester County Studio Tour on May 20 & 21 at her studio on Little Conestoga Road near the village of Eagle in Downingtown, PA.



70's Family Portrait

Her paintings "70's Family Portrait" and "Park Road & Station Blvd" are accepted in the 2017 Juried Alumni Exhibition at Moore College of Art & Design from June 3 to August 19.



Park Road & Station Blvd

<http://www.jonespondstudio.com> links to her website and <https://www.facebook.com/jonespondstudio/> links to her studio Facebook page

Gallery hours: Wednesday, Friday, Saturday, Sunday: 1 PM to 5 PM

May 2017

Art Natters: Members News

PSC Member, **Peter Quarracino** is participating in the Chester County Studio Tour at Denise Vitollo Studio #43 404 Price Street , West Chester, PA

SATURDAY, MAY 20, 10 a.m. to 6 p.m.

SUNDAY, MAY 21, 11 a.m. to 5 p.m.

Rain or Shine.

County Studio Tour's mission is to promote regional artists and contribute to the economic and cultural vitality of the area by presenting original artwork

This spring we have 179 artists and 72 studios to visit throughout Chester County. For info:

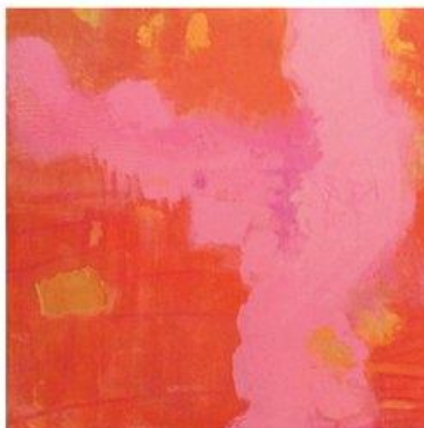
www.countystudiotour.com



The Wait

PSC member, **Sally Eisenberg**, will be exhibiting at Twenty-Two Gallery from May 12th thru June 4th in a solo exhibition entitled "Nourishing Palette." The opening reception will be Friday, May 12th from 6:00 - 9:00 pm.

SALLY K. EISENBERG NOURISHING PALETTE



OPENING RECEPTION FRIDAY, MAY 12TH 6-9 PM

Twenty-Two Gallery 236 S. 22nd Street Philadelphia, PA 19103

Gallery hours: Wednesday, Friday, Saturday, Sunday: 1 PM to 5 PM

May 2017

Art Natters: Members News

PSC member, **Sharon Shaw** will be included in the Central Bucks County Studio Tour to be conducted May 20-21, 2017.

With a reception at the Bucks County Art Conservatory on 19 April. For more please visit www.SharonShawArt.com or [Facebook Sharon Shaw Studio](https://www.facebook.com/SharonShawStudio).

PSC member, **Sheldon Strober** is exhibiting at the Old City Jewish Art Center with the group: "DEEP SIX". The group exhibition is titled "Deep Six: Harmony in Diversity" will run from May 1-28 with the opening on First Friday, May 5- 5-9 pm. The group includes six artists: Susan Richards, Rex Sexton, Melvin A. Chappell, Mikel Elam, John A Benigno, and Sheldon Strober. They have previously shown together, and are now reuniting with a new vision and all new work.=

PSC member **Doug Smock** has a solo show May 1 to June 15 2017 at Gravers Lane Gallery in Chestnut Hill.



Joseph Sweeney Is doing a plain air workshops in Key West and Cape For more information go to :<https://www.pafa.org/courses/plein-air-painting-cape-may-new-jersey>

Gallery hours: Wednesday, Friday, Saturday, Sunday: 1 PM to 5 PM

May 2017

Art Natters: Members News

"COLOR POPS Two" Solo Exhibition by **Su Knoll Horty**, Sketch Club member.



Color Pops

Exhibition Dates: May 5 - 29, 2017. Artist Reception: First Friday, May 5th, 5:30-8 p.m. Location: Christina Cultural Arts Center, Ed Loper Gallery, 705 N. Market St., Wilmington, DE 19801. 302.652.0101,

<http://www.ccacde.org/contact.ph>. Note: Please Press Buzzer for Entry.

For questions, contact: Su Knoll Horty, 302.345.2747, sckh@comcast.net, <http://www.suknollhorty.com>.

PSC Member, **Doris Peltzman** is part of the Main Line Gala Exhibition at Main Line Art Center in Havertown, P.A. The exhibit will run through June, 2017

She also has two paintings at the Burlington County Art Guild's Robert Ramsley Juried Exhibit at the Lyceum Hall in Burlington, N.J. as well as Markeim Arts Center in Haddonfield, N.J.



Gallery hours: Wednesday, Friday, Saturday, Sunday: 1 PM to 5 PM

May 2017

Calls for Work and Notices

PSC member, **Corinne Dieterle** and Executive Director of the Whitemarsh Art Center invitation to participate in a Plein Air Paint Out



MAY 21, 8-4 PLEIN AIR PAINT OUT

Come paint!

Cash prizes and opportunities to exhibit and sell your work.

Paint anywhere in Whitemarsh Township, the Borough of Conshohocken, Maple Acres Farm, and The Morris Arboretum.

All mediums welcome. Please only submit one piece for jurying.

Ages 18+ Questions? Email: office@whitemarsharts.org

To register: www.whitemarsharts.org



**RAINDATE
SATURDAY MAY 20th**

**Drop off 5pm at
Whitemarsh Art
Center
100 Cedar Grove Rd.
Conshohocken**

**Jurying begins at
5:30**

**Awards
announced &
awarded at 6:30
Open to the public**

**Juror
Al Gury
Chair of Painting, PAFA
& author of *Alla Prima***

WHITEMARSH ART CENTER

100 Cedar Grove Rd.
Conshohocken PA 19428
610-825-0917

Sun, May 21, 8-4
Raindate May 20th
Pre-registration required
www.whitemarsharts.org

Gallery hours: Wednesday, Friday, Saturday, Sunday: 1 PM to 5 PM

May 2017

Calls for Work and Notices

Lisa Ford will be participating in the Chester County Studio Tour May 20 and 21. My Studio is stop 12. Hope you can make it!



Jewelry by Sarah Myers:

Now to June 25, 2017

Opening Reception

The Cosmopolitan Club
of Philadelphia

Hours Mondays - Fridays
10 a.m. to noon & 2 p.m. to 4 p.m.
215-735-1057, ext 10
1616 Latimer Street

Philadelphia, Pa 19103 samcustomjewelry.com

Gallery hours: Wednesday, Friday, Saturday, Sunday: 1 PM to 5 PM

May 2017

Calls for Work and Notices

Or Hadash Staircase Gallery

Reconstructionist Congregation Or Hadash in Fort Washington, PA is housed in a historic building, formerly the summer mansion of well-known society families. We have adapted a formerly grand entrance staircase into what we call The Staircase Gallery.

The Staircase Gallery has been having 3 shows a year for over 14 years. We have had shows featuring a diverse group of painters, photographers, children's art, and illustrators. We have incorporated writings and travel logs into exhibits for multi-talented artists who work in multiple mediums.

We are always looking for local artists who would like to show their work. The application process is to simply let us know of your interest, sending us a link to a site where we can see your work. If the Gallery committee feels your work would work in our space, we will contact you to schedule a show. The school students pass through the gallery so we must consider what is appropriate viewing for them in our decision making process. Many artists make a list of prices available for sales. We provide assistance in the hanging of the show and let the artist know what supporting documents are typically displayed.

We are currently scheduling for the 2017 season and going forward. If you would like to have a show in our unique and charming gallery, please let us know at mikeoswald@comcast.net. We will start the process and let you know what the steps are if we go forward.

Academy House Exhibition Opportunity

The Academy House art committee is now looking for pieces to display in our lobby starting sometime in April 2017.

If any of your artists at the Philadelphia Sketch Club are interested, ask them to stop into the lobby (which now can be accessed only through 251 S. 15th Street) and look at the spaces currently being used. (The two pieces on the lobby level are smaller than we would prefer; the piece on the landing is an appropriate size.) If they think they have work that would be suitable for us, ask them to send photos and dimensions and we will take them up for consideration. Pieces displayed can be for sale, though the condo asks 20% of the selling price.

Photos can be emailed to this address or dropped off at the front desk with my name on the envelope.

Thanks,
Michael Goldman
academyhousearts@gmail.com
1425 Locust Street
Philadelphia, PA 19102

Gallery hours: Wednesday, Friday, Saturday, Sunday: 1 PM to 5 PM

May 2017

Member Classifieds

PSC member, **Joanne Hirsh** is pleased to tell you that the Philadelphia real estate market has been quite active since the arrival of spring. We have all kinds of properties for sale or rent from condos to houses in our many neighborhoods at all price points.

Should you need assistance or just general information, I would be happy to help you. You can reach me at: joanne.hirsh@foxroach.com or 610-310-7062.

Happy Spring,

Joanne Hirsh

Photography Services for Artists

Do you need high-quality digital images of your work? Is glare a problem? Color balance not quite right? I can help you get great images of your 2-D or 3-D work suitable for digital file output or output for presentation and hard-copy presentation. I offer flexible availability, willingness to travel, special pricing for Sketch Club members.

Contact PSC member **Ken Weiner** at info@sketchclub.org.

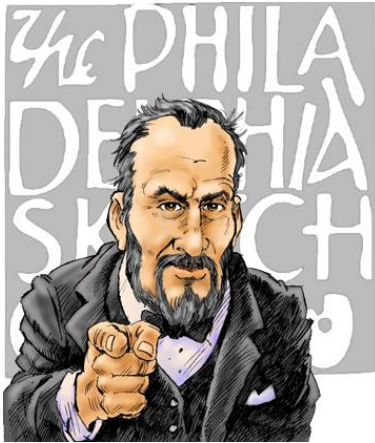
Seeking Framers

Sketch Club members frequently ask about framing services. If you wish to provide framing services to PSC members, please contact the PSC at info@sketchclub.org or call the PSC office: 215 545-92908

Gallery hours: Wednesday, Friday, Saturday, Sunday: 1 PM to 5 PM

May 2017

Call for Volunteers



We have important positions within the PSC that need volunteers to take over! Contact Faad Ghoraishi at to help out your club with future events.

The Portfolio: The newsletter of the Philadelphia Sketch Club is published monthly. Editor: Ken Weiner;
Technical support and Web Master: Ken Weiner

Send your member news, announcements and corrections to portfolio@sketchclub.org. The due date for all materials is one week before the end of the month.

Back issues of the Portfolio are available at: <http://sketchclub.org/portfolio-archive/>

The Philadelphia Sketch Club

235 S Camac Street
Philadelphia, PA 19107
(215) 545-9298
<http://sketchclub.org/>
executivedirector@sketchclub.org

Gallery Manager: Michelle Lockamy

Officers:

- President: Richard Harrington
- Vice President: Kenneth Weiner
- Secretary: Fran Carter
- Treasurer: William Patterson

Board of Directors

- Vincent Docktor
- Melanie Dion
- Stephen Iwanczuk
- William Kosman
- Kevin Myers
- Nancy H. Mills
- Brian Siegel
- Charles F. Tarr
- Joe Winter