

Gallery hours: Wednesday, Friday, Saturday, Sunday: 1 PM to 5 PM

September 2017



Ken Weiner

This Month's Portfolio

Support the Sketch Club	2
Membership	6
Sketch Club Activities	7
Member Activities	11
2017 Main Gallery Schedule	12
2017 Stewart Gallery Schedule	16
Sketch Club Open Workshop Schedule	17
Art Natters: Members News	18
Calls for Work and Notices	25
Member Classifieds	25
Call for Volunteers	27
Send your member news, announcements and corrections to portfolio@sketchclub.org . The deadline for ALL submissions is 1-week before the end of the month.	

Reminder: It's never too late. You can always renew your membership

You may pay online at <http://sketchclub.org/annual-dues-payment/>

or mail your check to:

The Philadelphia Sketch Club

235 S. Camac St.

Philadelphia, PA 19107

For questions please contact the Gallery Manager at 213335-545-9298 or email:

executivedirector@sketchclub.org

Late Breaking News – See items that were submitted after the publication date. Go to:

info@sketchclub.org

The PSC general email is: info@sketchclub.org

Gallery hours: Wednesday, Friday, Saturday, Sunday: 1 PM to 5 PM

September 2017

Support the Sketch Club

Contribute

Please consider making your tax-deductible contribution now. These funds will be put to good use providing enhanced services to our members and friends.

Membership dues cover only a small portion of the PSC's operating expenses. Competition for funding for arts organizations like the Sketch Club is increasingly competitive and total funding for the arts is shrinking. Your additional support will keep the PSC an active support for visual artists in the Metropolitan Philadelphia area. The Philadelphia Sketch Club is an IRS designated 501(c) (3) non-profit organization which allows your donations to be tax deductible.

You can call the office at 215-545-9298, mail checks to the Sketch Club or visit the Contribute page of our Website.

Visit our **Contribute** page of our website to give online at:

<http://sketchclub.org/support-us/>

Smile.Amazon.Com

Support the Sketch Club when you purchase from Amazon, use Amazon Smile
It costs you nothing and makes money for the PSC

The Sketch Club's AmazonSmile Link: <http://smile.amazon.com>

Thank you for your participation in the AmazonSmile program.

Purchases made by Sketch Club supporters using AmazonSmile in May resulted in a \$27.15 AmazonSmile contribution to the PSC. It's not much, but every cent helps. So don't forget, use the above link when purchasing from Amazon and increase the PSC's income.

What is AmazonSmile?

Amazon Smile is a simple and automatic way for you to support your favorite charitable organization every time you shop, at no cost to you. When you shop at smile.amazon.com, you'll find the exact same low prices, vast selection and convenient shopping experience as Amazon.com, with the added bonus that Amazon will donate a portion of the purchase price to your favorite charitable organization. You can choose from nearly one million organizations to support.

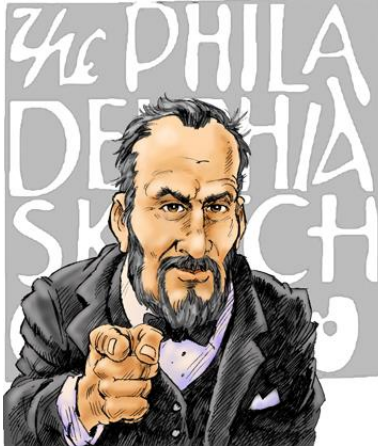
To learn more about Amazon Smile go to: <http://smile.amazon.com/gp/aw/ch/about>

Gallery hours: Wednesday, Friday, Saturday, Sunday: 1 PM to 5 PM

September 2017

Support the Sketch Club

Volunteers are **Always** needed!



We are now seeking a PSC member with great organizational skills to assist in managing the Member Dinner arrangements. If you want to get involved in this important PSC activity, please contact us ACAP at:

executivedirector@sketchclub.org

Other volunteer opportunities:

- Gallery Sitting
- Accept/Return Work
- Special Projects
- Assist with Exhibition Tasks

Help the PSC with important positions within the PSC that need volunteers to take over! Contact [Faad Ghoraishi](mailto:Faad.Ghoraishi@sketchclub.org) at to help your club with future events

Calling all artists - Board Members and volunteers to PAINT, not the town but the Sketch Club!

We are in need of a splash of paint to freshen: the front entrance vestibule; second floor Gallery window (interior), which has just been renovated; the Garden Shed Door and Garden Entrance Gate from Latimer Street and radiators in the second floor Gallery. Hopefully, with teamwork, we can have these projects completed in time for our Gala on October 21st.

We will have more projects in store for the winter months to shed your cabin fever. What better way than to be with fellow members.

Please contact Michelle Lockamy at 215-545-9298 or at her email address at: executivedirector@sketchclub.org."

Chuck Tarr,

House Chair

Gallery hours: Wednesday, Friday, Saturday, Sunday: 1 PM to 5 PM

September 2017

Support the Sketch Club



**Sketch Club Members receive a
25% discount at Merion Art.
Use promo code "PSC"
online at www.merionart.com**

"Our staff of experienced artists, custom framers, and designers can answer your art materials questions and help to creatively solve all your artistic problems. Stop in our store for personalized friendly attention, or go to merionart.com for access to thousands of quality art products!"

Monday - Friday: 8:30am - 6:00pm
Saturday: 9:00am - 5:30pm
Sunday: 12:00pm - 5:00pm

Merion Art & Repro Center (610) 896-6161 - Phone
17 West Lancaster Avenue (610) 896-7781 - Fax
Ardmore, PA 19003

PHOTOLounge

The **PHOTOLounge** supports the Philadelphia Sketch Club and its members:

**Sketch Club Members receive a 15% discount at PHOTOLounge.
Use online promo code "sketch".**

The PHOTOLounge is located at 1909 Chestnut St. Philadelphia PA 19103.

For nearly 20 years, PHOTOLounge's focus has been the simple idea that pictures should be beautiful, affordable, and long lasting. We're a very adept photo lab with diverse services from iPhone printing to shoebox scanning. You can bring us film for processing, and also order prints [online](#), or from the [App](#). Come in and print your world.

**Sketch Club Members receive a 15% discount at PHOTOLounge.
Use online promo code "sketch".**

267-322-6651 – www.myphotolounge.com

Gallery hours: Wednesday, Friday, Saturday, Sunday: 1 PM to 5 PM

September 2017

Support the Sketch Club

Sketch Club members receive 20% discount




We offer a variety of framing materials and techniques including:

- Archival / conservation treatment • Specialty mats (Linen, Suede, Silk)
- Stretching / Blocking of needleart and oils
- 1000's of moulding choices • 22 karat finished corner frames • Memorabilia framing
- Custom toning / coloring • Decorative mat cuts • French matting • Fillets
- Mirrors • Shadowboxing • Dry Mounting

www.CanalFrame.com • CanalFrame@comcast.net • 215-493-3660
1093 General Greene Road, Washington Crossing, PA 18977

Framing Family Treasures for over 20 Years



Like, Link & Share

If you're not following the Philadelphia Sketch Club on Facebook re-tweeting Sketch Club tweets yet, it's time that you did. We have well over 2000 Facebook followers. Get the word out about the Sketch Club. Please click the like button and share your comments and invite your friends to like our page.

Follow @PhilaSketchClub on Twitter, we have almost 400 followers. Please click the heart button and re-tweet our announcements.

Include links on your website, blogs and social media to The Philadelphia Sketch Club to increase traction across social media platforms.

Follow us on Facebook, Twitter and Instagram now!

Thanks to Don Brewer and Michelle Lockamy for managing PSC social media sites.



Gallery hours: Wednesday, Friday, Saturday, Sunday: 1 PM to 5 PM

September 2017

Membership

Not a PSC Member?: Join Now!

If you're reading this edition of the Portfolio and you're not a member of the PSC, you should consider joining the more than 200 other Philadelphia area artists who have. The PSC is one of the most active visual art venues serving center city Philadelphia. The PSC is a hands-on organization that offers its members the opportunity to participate in all aspects of creating and presenting work to the public. It presents over 20 scheduled group and solo exhibitions annually and offers a wide range of daily workshops. [Get info and an application here.](#)

If you are a member of the PSC, please feel free to share the Portfolio with your artist friends and encourage them to become members.

Membership Renewal

You can check the status of your membership by going to the Current Members page on the PSC web-site: <http://sketchclub.org/sample-page/memberspace/>. All current members are listed. An asterisk (*) means that the membership has expired but is within the 60-day grace period for renewal. Names in red are active links to the individual's web site.

Renew Now! <http://sketchclub.org/annual-dues-payment/>

If you have any questions about your membership, please don't hesitate contact us at membership@sketchclub.org or call the office: 215-545-9298.

New Members this Month

The Sketch Club welcomes new members recently approved by the Board of Directors.

- Adele Dimedio
- Christopher Fowler

Current Sketch Club members can review new member applications at: <http://sketchclub.org/member-applications/>. The members only section and documents are password protected. If you've forgotten the password, please contact Ken Weiner at: membership@sketchclub.org.

Gallery hours: Wednesday, Friday, Saturday, Sunday: 1 PM to 5 PM

September 2017

Sketch Club Activities

The Philadelphia Sketch Club's 157th Anniversary Gala

Please join us for our 157th Anniversary Gala on Saturday, October 21st. The Gala will be held at the Philadelphia Sketch Club, 235 S. Camac Street, Philadelphia, PA 19107, from 6 to 10 PM. You will have a fun time and get to mix with many prominent members of the artistic community. At the Gala, we will honor three of America's top artists, Alan Fetterman, Al Gury and Signe Wilkinson, with the presentation of the Philadelphia Sketch Club Medal. Below is a notice of the event that will appear in the September issue of ICON Magazine.

We are in the process of forming an Honorary Gala Committee whose membership will include many prominent individuals from the artistic community.

The main job of the Honorary Gala Committee is to encourage people to attend the event. The Honorary Gala Committee currently includes: David R. &

Holly Trostle Brigham (David is President and CEO of PAFA and Holly is an Artist); William R. Valerio, Director & CEO, Woodmere Art Museum; Lisa Tremper Hanover, Director & CEO, James A. Michener Art Museum;; and David Weiss, Vice President at Freemans, a specialist on the *Antiques Roadshow* and guest auctioneer for the Gala auction. Other prominent members of the artistic community will be added to this group. In addition to the medal presentations, highlights of the evening will include an unreserved live auction of artworks by the honored artists as well as some donated contemporary and historic works by Henry Pitz, Carl Weber, Mildred Sands Kratz, Vincent Ceglia and David Shevlino. There will be an open bar, hors d'oeuvres and a buffet dinner.

You can order tickets at [Purchase Gala Tickets](http://www.sketchclub.org) or by calling 215-545-9298. Please order tickets promptly as we must provide a headcount to our caterer plus our capacity may be exceeded by the demand for tickets.

www.sketchclub.org

See Live Auction Items Below



Gallery hours: Wednesday, Friday, Saturday, Sunday: 1 PM to 5 PM

September 2017

Sketch Club Activities

The Philadelphia Sketch Club's 157th Anniversary Gala Live Auction Items

PHILADELPHIA SKETCH CLUB 157th ANNIVERSARY GALA
LIVE AUCTION ITEMS AND PROMO ITEM



Alan Fetterman, *Colors in Carversville*, oil, 12" x 14"



Al Gury, *Mixed Bunch*, oil on panel, 12" x 9"

The Live Auction will include approximately 10 items to include the images shown here plus works by Signe Wilkinson, David Shevlino, Vicent Ceglia and Carl Weber. Additional images will be added when available.



Each person attending the 2017 Gala will receive a 17 oz. "Iced Tea" Glass with Club Logo and Corporate Seal



Mildred Sands Kratz (1928-2013), AWS, *Open Season On Decoys*, watercolor, 21.25 x 28.75



Henry C. Pitz (1895-1976), *Pomp and Circumstances*, watercolor, 24" x 30"

Gallery hours: Wednesday, Friday, Saturday, Sunday: 1 PM to 5 PM

September 2017

Sketch Club Activities

Critique Night – Next Meeting: September 20th, 2017

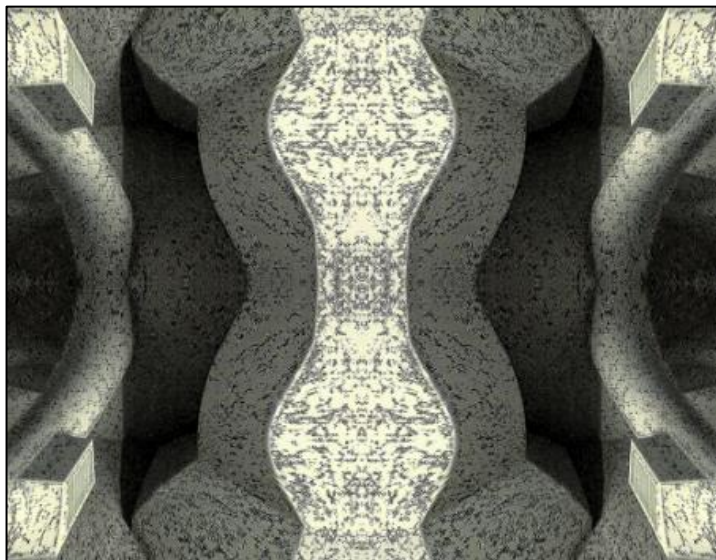
Open to PSC Members and Non-Members

RSVP to **Michelle Lockamy** at 215-545-9298 or
executivedirector@sketchclub.org

Critique Night is held in the Library of the Sketch Club every third Wednesday beginning at 7 PM. Bring work you've finished, work in progress, or just sketches for work you're planning! Photos, digital work, drawings, all mediums are welcome; we can project digital images on a screen for review, so you have the option to show work that may be too big or too heavy to transport to the Club. There is no one individual directing the critique, just your fellow artists and peers. Facilitated/monitored by **Rich Harrington**, PSC President



Photo Circle– Next Meeting: September 14th, 2017 from 6:30 to 8:30 PM



The Photo Circle meets every 2nd Thursday at 6:30 PM. You can contact Steve anytime at si22@drexel.edu or 215-300-9192 (cell). **Steve Iwanczuk**, Photo Circle Monitor and Member of Philadelphia Sketch Club Board of Directors.

Gallery hours: Wednesday, Friday, Saturday, Sunday: 1 PM to 5 PM

September 2017

Sketch Club Activities

Key Circle Volunteers

Key Circle Volunteers: Alice Chung, Wayne Franks, Faad Ghoraishi, Donald Kuetemeyer, Katy Lin, Marilee Morris, Rosa Kim Paik, Lauren Sweeney, Gail Williams

The story behind the “Key Circle” volunteer group

There are many types of volunteer activities that are essential to maintaining the Sketch Club as a vibrant art club and showcase for outstanding art. For the last year a small group of member volunteers dubbed the “Key Circle” has been working to help the Club be reliably open during scheduled weekend gallery hours, as well as drop-off and pick-up sessions, jurying sessions, etc. – all the background work that goes into putting on each show.



**GALLERY
OPEN**

Admission is Free



We are dubbed the “Key Circle” because each of us has direct access to open the club. This also means that one of our 8-member group should be signed up for each session so the other volunteers can be assured of access. Equally importantly, Key Circle members quickly become more familiar with many aspects of Sketch Club functioning – and thus more comfortable handling all manner of situations.

This past year, over 50 total volunteers staffed the galleries on weekends, drop-off and pick-up events. Even though many volunteered just a few times during the year, those numbers added up to fully staffed shows for much of the year, at least until the busy fall season. It would make all the difference going forward if the Key Circle group could be expanded from its current 8 members to 12 or more, and if we could gain a modest increase in volunteering from the group of 50 volunteers, or add a few more volunteers. Perhaps members could add a volunteer session for every show in which they get a work accepted. Then invite your friends and colleagues to visit the club when you are there. Just a thought!

If you are now curious about joining the key circle, or just interested in becoming more knowledgeable about how to do certain things as a regular volunteer, the next time you volunteer ask your Key Circle partner to explain things more fully. Are you mystified by what to do if someone inquires about buying a work of art when no one is there to open the office? How to turn up the thermostat? How to buzz a visitor in? No one learns these things overnight, or just from reading a set of instructions. (However, there is a detailed lime-green Volunteer notebook in the hall outside the office that contains all sorts of useful information about the club.) For those who are considering stepping it up a notch to become a key circle member, consider that volunteering event your first “training session” to become a key circle person.

To get more information, please contact a Key Circle member at info@sketchclub.org

Gallery hours: Wednesday, Friday, Saturday, Sunday: 1 PM to 5 PM

September 2017

Member Activities

Monthly Meeting and Dinner – **Friday September 15th, 2017**

Members' Dinner Meeting

Dinner and Presentation Open to the Public

Friday September 15, 2017

Please RSVP to Michelle in the PSC office by 12 Noon

September 13, 2017

AGENDA

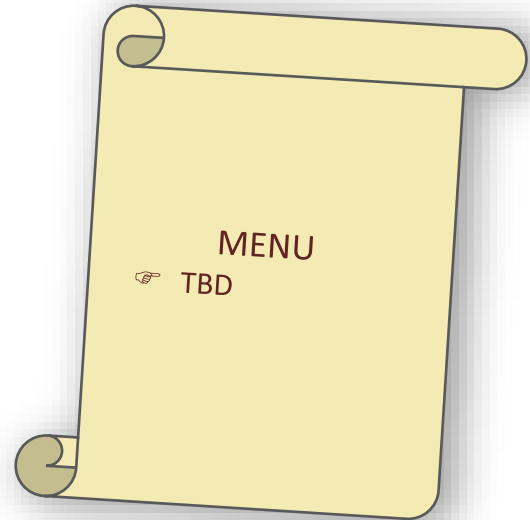
- 5:30- Social Period Begins
- 6:15- Speaker:
- 7:15- Dinner

DINNER

- Members - \$16
- Guests - \$18

Presentation: TBD

Go to <http://sketchclub.org/>
for updates.



Gallery hours: Wednesday, Friday, Saturday, Sunday: 1 PM to 5 PM

September 2017

2017 Main Gallery Schedule

Now in the Main Gallery: EMERGING ARTISTS: Young Philadelphia Artists at the Philadelphia Sketch Club


August 25th to September 20, 2017

The Philadelphia Sketch Club will recognize young Philadelphia artists who have started on promising careers through this exhibition. 18 young Philadelphia artists under the age of 30 will be exhibiting their work in the Club's main gallery. An Opening reception is scheduled for Sunday September 10th, 2017, from 2 to 4 PM.

Artists participating in this exhibition include:

Thomas LaPine, Heather McMordie, Claire Kincaide, Bettina Nelson, Katie Batten, Hillary Kursh, Steve Basel, Nick Blake, Drew Kohler, Sean Hildreth


Elizabeth F. Spungen, Mat Tomeszko, John Syner, SaraNoa Mark, Liza Samuel, David Love, [Sophie Brenneman](#), and [Emily White](#).



The Philadelphia Sketch Club presents
EMERGING ARTISTS:
Young Philadelphia Artists

August 25th to September 20, 2017

Opening Reception
Sunday, September 10th
from 2 to 4 PM



Gallery hours: Wednesday, Friday, Saturday, Sunday: 1 PM to 5 PM

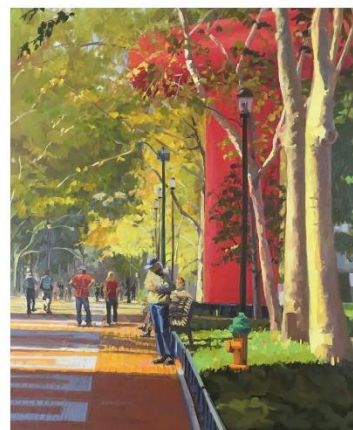
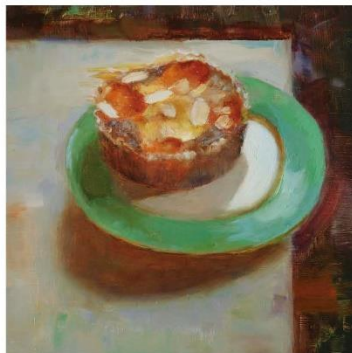
September 2017

2017 Main Gallery Schedule

Upcoming Exhibitions

2017 Annual Members' Exhibition

September 29 – October 25, 2017



Art: (top left, clockwise) Maria Kurtzman, "Apricot Tart" 10x10" Oil on linen. Joe Sweeney, "Egret" 16x19" Oil/museum board. Patrick Connors, "Early Spring Morning, Twin Sycamores" 20x16" Oil on linen. Elaine Lisle, "On Locust" 36x24" Oil/canvas.

2017 Annual Members' Exhibition

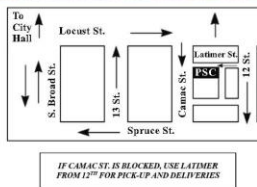
Enter online: sketchclub.org/psc-official

See Prospectus online for more details. This is a Non-juried show open only to PSC Members in good standing.

Deadline: Sunday, September 17, 2017 at Midnight

Exhibition Dates: September 29 – October 25, 2017

OPENING | **Saturday, October 7, 2017** | **11 AM to 6 PM**
RECEPTION | Free and open to the public



Cover Art: (top left, clockwise) Maria Kurtzman, "Apricot Tart" 10x10" Oil on linen. Joe Sweeney, "Egret" 16x19" Oil/museum board. Patrick Connors, "Early Spring Morning, Twin Sycamores" 20x16" Oil on linen. Elaine Lisle, "On Locust" 36x24" Oil on canvas.



The Philadelphia Sketch Club is the oldest artist club in America. It has had many noted members to include Thomas Eakins, N. C. Wyeth, Thomas Anshutz, Joseph Pennell, Howard Chandler Christy, Thomas Moran and a host of others. A young Thomas Eakins taught life workshops at the Sketch Club in 1874 and 1875 and used that experience to gain a position at the Pennsylvania Academy of the Fine Arts. During that time in 1875, Eakins at the age of thirty painted his most memorable painting, *The Gross Clinic*.

The Philadelphia Sketch Club

235 South Camac Street | Philadelphia, PA 19107 | (215) 545-9298 | www.sketchclub.org
Gallery hours: Wednesday, Friday, Saturday, Sunday 1-5 PM

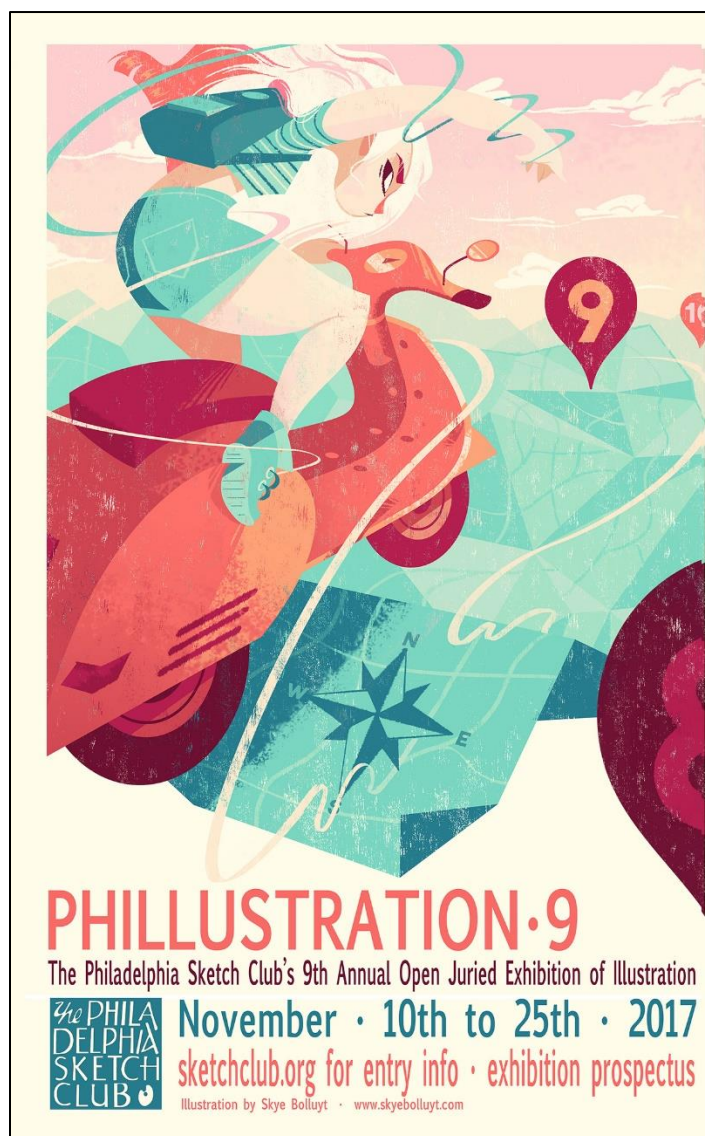
Gallery hours: Wednesday, Friday, Saturday, Sunday: 1 PM to 5 PM

September 2017

2017 Main Gallery Schedule

Coming in November

[Get the Prospectus](#)



Phillustration · 9 November 10 to 25th 2017 · Call for Entries

Phillustration is the PSC's open juried exhibition of illustration, and the only exhibition of its kind in the Northeast US outside of New York City. Past exhibitors have included noted illustrators Charles Santore, Boris Vallejo, Julie Bell, David Palumbo, David Weisner, James Bennett and New Yorker cover artist Bob Staake as well as talented illustrators from the Tri-State area and up and coming student illustrators.

Illustration by Skye Bolluyt

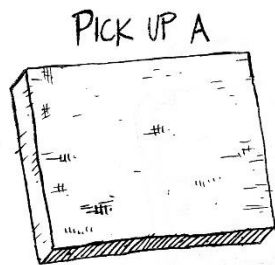
Gallery hours: Wednesday, Friday, Saturday, Sunday: 1 PM to 5 PM

September 2017

2017 Main Gallery Schedule

Coming in December:

The Annual Legacy Holiday Art Show and Sale December 2nd thru 17th



Christmas in August...?

Nope- The Annual Legacy Holiday Art Show and Sale is scheduled for December 2nd thru 17th, 2017, and it is not too early to think about creating a piece to help support the Sketch Club.

This year, Blick Artist Materials in Philadelphia have donated 41 9 x 12 stretched canvasses to the PSC. These canvasses are available on a first come, first serve basis for any PSC member who would like to use one to create a work for sale at the Legacy Art Show and Sale in December. A canvas can be picked up at the PSC on Wednesdays or Fridays from 11 AM to 5 PM, or arrangements can be made to pick one up by emailing Michelle Lockamy at executivedirector@sketchclub.org.

Members who take a canvas will be expected to have the finished work framed, wired, and ready to hang in the Legacy Show by November 26th, 2017. Digital images of work finished before November 1st 2017 should be sent to Kevin Meyers, the Exhibition Chair, for use in exhibition publicity and for display in the PSC online gallery. As per the tradition of the PSC Legacy Holiday Show and Sale, any other works provided by members for the exhibition will fall under the guidelines of the exhibition prospectus.

The Exhibition Prospectus will be on the PSC website soon, but the canvasses are available now!



Gallery hours: Wednesday, Friday, Saturday, Sunday: 1 PM to 5 PM

September 2017

2017 Stewart Gallery Schedule

Now in the Stewart Gallery: The New Members Show opens in the Stewart Gallery

August 25 to September 17th, 2017

New Members Show: Reception: Sunday, September 10th, with greeting and remarks in the Stewart Room from 1-2pm, and the reception for the Emerging Artists in the upstairs Gallery from 2-4pm.

Exhibition Schedule and Events Calendar Always Available at sketchclub.org

Don't forget, you can always see the schedule for the coming year on the PSC web-site. Go to the Calendars/Events menu and select Exhibition Schedule. Here's the link:

<http://sketchclub.org/exhibitions/>. And new for this year, we've added an Events Calendar under the Calendars/Events menu. This calendar will show a complete list of the dates for important activities and deadlines. See it here: <http://sketchclub.org/calendar/>



Gallery hours: Wednesday, Friday, Saturday, Sunday: 1 PM to 5 PM

September 2017

Sketch Club Open Workshop Schedule

All workshops are open to the public. There is no need to register before attending. You do NOT have to be a member of the Philadelphia Sketch Club to participate in the workshops. Our workshops are open to anyone who is interested in drawing, painting or printmaking. All skill levels are welcome. Fees: Model workshops: \$8/session members, \$9/session for non-PSC members; Printmaking workshop: \$10/session; All workshops \$6 for full-time students. Monitored by PSC members.

Life Model	Costumed Model	Printmaking
Mondays – Extended pose (multi-session): 6:30 PM-9:30PM Monitors: Robert Bohne, Vince Docktor, Dan Kuetemeyer Tuesdays – Extended pose: 12:00 PM to 3:00 PM Monitor: Jacqueline Barnett Wednesdays – Extended pose: 6:30 to 9:30 PM Monitor: Vince Docktor Saturdays – Extended pose: 9:30 AM to 12:30 PM Monitor: Vince Docktor	Thursdays Extended pose 12:00 PM to 3:00 PM Monitor: Bob Bohne.	Tuesdays 10:00 AM to 2:00 PM Monitor: Elizabeth H. MacDonald

Please Note: Those who use oil paints should bring their own container(s) to remove used solvents. Odorless solvents only.

Gallery hours: Wednesday, Friday, Saturday, Sunday: 1 PM to 5 PM

September 2017

Art Natters: Members News

PSC member, **Susan Barnes** received an Outstanding Achievement Ribbon Award in the LBI Foundation Member, Student, Faculty Exhibition for "Seining the Bay" O/L, 24 x 24 inches.

She also has two paintings accepted in the 41st Annual Juried Art Exhibit at Smithville Mansion Annex Gallery, Eastampton, NJ. Reception scheduled for Saturday, September 9th from 1 to pm. The show runs through October 29, 2017.



3

Seining the Bay

Gallery hours: Wednesday, Friday, Saturday, Sunday: 1 PM to 5 PM

September 2017

PSC member, **Joe Sweeney** Course Offerings

PAFA Continuing Education Classes

PT 605CM Four Days - **Plein Air Painting in Cape May, New Jersey**

September 14, 2017 - September 17, 2017 | 9:00 am - 5:00 pm

Master Classes, Thursday through Sunday | Weekend

Instructor: Joseph Sweeney

Subject: Landscape

To sign up go to: <http://www.joesweeneyart.com/courses/>

Cape May Point



Cape May Point

DR 603ED - 12 Weeks - **Pastel Drawing and Painting At PAFA**

September 19 2017 - December 05 2017 | 12:30 pm - 3:30 pm

Multi-Week Courses, Tuesday | Weekday

Instructor: Joseph Sweeney

Subject: Combination, Still Life, Portrait

PT 605EB - 6 Weeks - **The Pennsylvania Landscape Tradition, New Hope**

September 20 2017 - November 01 2017 | 10:00 am - 4:00 pm

Multi-Week Courses, Wednesday | Weekday

Instructor: Joseph Sweeney

Subject: Landscape

To sign up go to: <http://www.joesweeneyart.com/courses/>

New Hope on the Delaware



New Hope on the Delaware

PT 605RI Five Days - **Plein Air Painting in Newport, Rhode Island**

October 16 2017 - October 20 2017 | 9:00 am - 5:00 pm

Master Classes, Monday through Friday | Weekday

Instructor: Joseph Sweeney

Subject: Landscape

To sign up go to: <http://www.joesweeneyart.com/courses/>

Wayne Art Center

FA17.289.M | Pastels Or Oil Painting

September 11, 2017 - December 11, 2017 | Each Monday 9:30 AM - 12:30 PM



The Dumplings, Newport, Rhode Island

Gallery hours: Wednesday, Friday, Saturday, Sunday: 1 PM to 5 PM

September 2017

Art Natters: Members News

PSC member **Deborah Riccardi's** work has been included in last year's **Art of the State 2016** exhibiting "**MOM, Haiti**" which is an oil on canvas and this year's **Art of the State 50th Anniversary Exhibition 2017** exhibiting "**Play, Guatemala**" a digital photo on archival paper. This will be Deborah's fifth exhibition at the State Museum.

She traveled to Guatemala in May 2017 to help build relationships and four compost Latrines for the people of Coyolate. This was her fifth trip to Guatemala serving on the mission field.



Guatemala in July



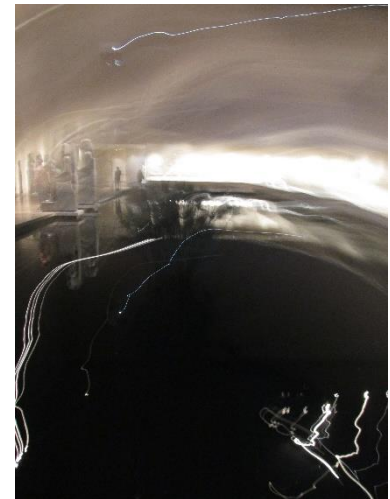
UP

Deborah was also appointed **Director of Research, Inventory of the Art and Artifact Restoration Project** at Valley Forge Military College. She has pioneered the first ever Studio, Art Appreciation and Art History courses taught at Valley Military College that began over fifteen years ago.

The "**Art of the State: Pennsylvania 2017**" exhibition runs from **Sunday, June 11, 2017 to Sunday, September 10, 2017**. For more information about The State Museum of Pennsylvania:

<https://www.flickr.com/photos/patrailsofhistory/34111599402/in/album-72157679613853723/> visit www.statemuseumpa.org

The Absolutely Abstract 2017 Exhibition Antigua, Guatemala at Night, digital photograph on archival paper, and **Up**, digital photograph on archival paper.



Antigua at Night

Gallery hours: Wednesday, Friday, Saturday, Sunday: 1 PM to 5 PM

September 2017

Art Natters: Members News

RECENT WORKS
presented by
SALLY K. EISENBERG and BILL SILVER




OPENING RECEPTION SATURDAY, SEPTEMBER 9TH 11 AM - 7 PM
NAUDAIN STREET ARTIST COLLABORATIVE
AGELESS GARDENS 2503 NAUDAIN STREET PHILADELPHIA, PA 19146

SALLY K. EISENBERG and BILL SILVER
Showing of Recent Works

OPENING RECEPTION
SATURDAY, SEPTEMBER 9TH 11AM -7 PM

SHOW DATES
SEPTEMBER 9 - SEPTEMBER 30, 2017

www.sallykeisenbergartist.com
www.artbybillsilver.com

left: SALLY K. EISENBERG
"Improv Dance"
mixed media on canvas 24" x 24"

right: BILL SILVER
"Florence, a View from Piazza Michelangelo"
oil on canvas, 20" x 28"

Sponsored by the
Naudain Street Art Collaborative at Ageless Gardens
2503 Naudain Street, Philadelphia, PA 19146

Gallery hours: Wednesday, Friday, Saturday, Sunday: 1 PM to 5 PM

September 2017

Art Natters: Members News

New PSC member **Jeleata Nicole** is a Philadelphia area based artist, wife and mother of 3 children. For 15 years, her passion has been for the fine arts, particularly pencil portrait renditions, while also doing custom small-scale murals. The ability to realistically capture an individual's personality, present emotions and feelings through an artistic snapshot has always driven her to be passionate about her portrait work. The first she did a commission portrait for someone, what resonated the most with her was the "look of not only excitement, but pure emotion for the subject represented". It was quickly solidified at that point that portrait work would be a driving force for her for years to come. Influenced at an early age by a mother and father both with artistic talent themselves and later by her high school art teacher, Jeleata Nicole has always had a great support system with which to nurture her talents.



Pure Happiness

Because of the passionate and creative personality, she has always possessed, Jeleata Nicole has taken her artwork on a long journey through many mediums, styles and influences. For many years, she has stuck to her first love, depiction portraits of individuals with a goal to channel the subjects emotional state to the viewer. She has always found that charcoal and pencil has given her unique talent the best forum with which to create the transferable emotions necessary. As time has progressed though, so has her artwork. After dipping her brush into acrylic works, she recently began working with oils which has allowed her to rediscover a love for a side of art she had not realized was there. The ability to bring forth the vibrant color palette oil paints allow while still maintaining the intricate details she's always found important has resulted in a new expansive line of artwork she can be proud of.

Her portfolio at this point has diversified past just her pencil and paint works. Influenced by 2 important life events she has branched out into 2 new artistic forums as a result. First was her wedding, where Jeleata Nicole took it upon herself to create a memorable experience by hand painting chalkboard signs for her special day. Since then she has now ushered that

into creating specialty chalkboard signs for baby showers, weddings, wedding showers, restaurants and even country clubs.

Gallery hours: Wednesday, Friday, Saturday, Sunday: 1 PM to 5 PM

September 2017



Jacey "commission portraits"

In 2016, Jeleata Nicole was one of 28 artists selected to participate in the Donkeys Around Town public arts initiative in Philadelphia. She painted 2 of the 57 fiberglass donkeys that were displayed in Center City Philadelphia during the Democratic National Convention. She was also voted Top Emerging Artist at the Manayunk Arts Festival in 2015. She was also selected to display her artwork at Philadelphia City Hall for the "All That Jazz" event. You can now find Jeleata Nicole's artwork both nationally and internationally in schools, cafes, country clubs, homes of private collectors and more.

Visual Artist- *Jeleata Nicole*

<http://www.jeleatanicole.com>

nicole@jeleatanicole.com

[Twitter](#) [Facebook](#)

The 2nd life event was the birth of her son in 2016. Diagnosed with Plagiocephaly, he was required to wear a cranial helmet for 6 months. Nicole looked at the helmet as a blank canvas with which to bring a more excited type of attention to her son. It quickly expanded into a passion which led to her developing Cranial Creations and Beyond, a business dedicated to the artistic transformation of wearable medical devices. She has recently partnered with "Helmets for Hope", a charitable foundation which helps families in need when insurance refuses to cover costs.

ART FOR THE HEART
THE ART OF GIVING

1ST ANNUAL ART SHOW
(CHARITABLE EVENT)
\$5 cover
refreshments
cash bar

FEATURED ARTIST
Jeleata Nicole
Fine Art
Cory Harrill
Photography
ANA THORNE
TEXTILE DESIGN-SEMI-MADE GIFTS & MORE

WHERE
Westover Country Club
401 Schuylkill Ave,
Norristown, PA 19403

TIME
September 9th
2pm - 5pm

GUEST SPEAKER
Jey Mbiro
(3pm)
Compassion
International

Art for the Heart is a charitable event focused on raising the awareness for childrens needs. All donations will support Compassion Internaional and local artists to bring our present community together to raise the dreams of our children for a better future.

Gallery hours: Wednesday, Friday, Saturday, Sunday: 1 PM to 5 PM

September 2017

Art Natters: Members News

PSC member **Nancy E. F. Halbert** will be presenting a solo show at The Pennswood Art Gallery, 1382 Newtown-Langhorne Road, Newtown, PA 18940. This invitational exhibition will include expressive figurative and landscape paintings. Artist talk is Sunday, September 17, 2 pm with a reception to follow. Exhibition will run till end of October. For more information 215-968-9110



Degas Dancer

Gallery hours: Wednesday, Friday, Saturday, Sunday: 1 PM to 5 PM

September 2017

Calls for Work and Notices

Or Hadash Staircase Gallery

Reconstructionist Congregation Or Hadash in Fort Washington, PA is housed in a historic building, formerly the summer mansion of well-known society families. We have adapted a formerly grand entrance staircase into what we call The Staircase Gallery.

The Staircase Gallery has been having 3 shows a year for over 14 years. We have had shows featuring a diverse group of painters, photographers, children's art, and illustrators. We have incorporated writings and travel logs into exhibits for multi-talented artists who work in multiple mediums.

We are always looking for local artists who would like to show their work. The application process is to simply let us know of your interest, sending us a link to a site where we can see your work. If the Gallery committee feels your work would work in our space, we will contact you to schedule a show. The school students pass through the gallery so we must consider what is appropriate viewing for them in our decision making process. Many artists make a list of prices available for sales. We provide assistance in the hanging of the show and let the artist know what supporting documents are typically displayed.

We are currently scheduling for the 2017 season and going forward. If you would like to have a show in our unique and charming gallery, please let us know at mikeoswald@comcast.net. We will start the process and let you know what the steps are if we go forward.

Academy House Exhibition Opportunity

The Academy House art committee is now looking for pieces to display in our lobby starting sometime in April 2017. If any of your artists at the Philadelphia Sketch Club are interested, ask them to stop into the lobby (which now can be accessed only through 251 S. 15th Street) and look at the spaces currently being used. (The two pieces on the lobby level are smaller than we would prefer; the piece on the landing is an appropriate size.) If they think they have work that would be suitable for us, ask them to send photos and dimensions and we will take them up for consideration. Pieces displayed can be for sale, though the condo asks 20% of the selling price. Photos can be emailed to this address or dropped off at the front desk with my name on the envelope.

Thanks,
Michael Goldman
academyhousearts@gmail.com
1425 Locust Street
Philadelphia, PA 19102

Member Classifieds

Gallery hours: Wednesday, Friday, Saturday, Sunday: 1 PM to 5 PM

September 2017

Sketch Club Member **Sylvia Castellanos** looking for someone who can help me in the area of social media marketing of my paintings. I have been doing portraits and figurative paintings for several decades. I have a web site (sylviacastellanos.com), a Facebook professional page, a LinkedIn page, a Pinterest page and a You Tube channel with five videos. I want to be able to improve them, and to use them to reach a larger audience.

I also want to be able to use Facebook ads strategically to sell specific paintings. I want someone to teach me how to do it. I prefer that it be someone who has some background in using these skills specifically in a fine art context as well as in other areas. As a separate matter, I am also looking for someone who can serve as my representative with regard to certain functions, such as being the person who contacts institutions on my behalf.

If you feel you can do this or can recommend someone, please contact me through the Sketch Club. First please go to my web site and familiarize yourself with what I do.

PSC member, **Joanne Hirsh** is pleased to tell you that the Philadelphia real estate market has been quite active since the arrival of spring. We have all kinds of properties for sale or rent from condos to houses in our many neighborhoods at all price points.

Should you need assistance or just general information, I would be happy to help you. You can reach me at: joanne.hirsh@foxroach.com or 610-310-7062.

Happy Spring,

Joanne Hirsh

Photography Services for Artists

Do you need high-quality digital images of your work? Is glare a problem? Color balance not quite right? I can help you get great images of your 2-D or 3-D work suitable for digital file output or output for presentation and hard-copy presentation. I offer flexible availability, willingness to travel, special pricing for Sketch Club members.

Contact PSC member **Ken Weiner** at info@sketchclub.org.

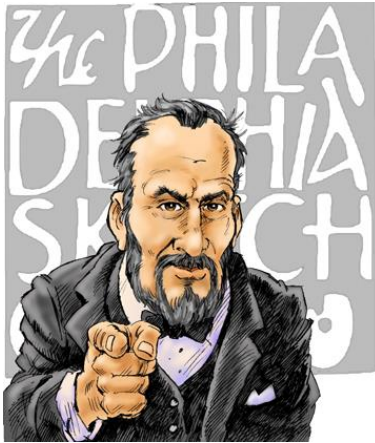
Seeking Framers

Sketch Club members frequently ask about framing services. If you wish to provide framing services to PSC members, please contact the PSC at info@sketchclub.org or call the PSC office: 215 545-92908

Gallery hours: Wednesday, Friday, Saturday, Sunday: 1 PM to 5 PM

September 2017

Call for Volunteers



We have important positions within the PSC that need volunteers to take over!
Contact Faad Ghoraishi at to help your club with future events.

The Portfolio: The newsletter of the Philadelphia Sketch Club is published monthly. Editor: Ken Weiner; Technical support and Web Master: Ken Weiner

Send your member news, announcements and corrections to portfolio@sketchclub.org. The due date for all materials is one week before the end of the month.

Back issues of the Portfolio are available at: <http://sketchclub.org/portfolio-archive/>

The Philadelphia Sketch Club

235 S Camac Street
Philadelphia, PA 19107
(215) 545-9298
<http://sketchclub.org/>
executivedirector@sketchclub.org

Gallery Manager: Michelle Lockamy

Officers:

- President: Richard Harrington
- Vice President: Kenneth Weiner
- Secretary: Fran Carter
- Treasurer: William Patterson

Board of Directors

- Elise Anzini
- Jacqueline Barnett
- Vincent Docktor
- Stephen Iwanczuk
- William Kosman
- Kevin Myers
- Charles F. Tarr
- Joe Winter