

Gallery hours: Wednesday, Friday, Saturday, Sunday: 1 PM to 5 PM

August 2017



## This Month's Portfolio

Support the Sketch Club	2
Membership	6
Sketch Club Activities	7
Member Activities	12
Help Wanted	12
2017 Main Gallery Schedule	13
2017 Stewart Gallery Schedule	17
Sketch Club Open Workshop Schedule	18
Art Natters: Members News	19
Calls for Work and Notices	24
Member Classifieds	24
Call for Volunteers	26
Send your member news, announcements and corrections to <a href="mailto:portfolio@sketchclub.org">portfolio@sketchclub.org</a> . The deadline for ALL submissions is 1-week before the end of the month.	

Reminder: It's never too late. You can always renew your membership

You may pay online at <http://sketchclub.org/annual-dues-payment/>

or mail your check to:

The Philadelphia Sketch Club  
235 S. Camac St.  
Philadelphia, PA 19107

For questions please contact the Gallery Manager at 213335-545-9298 or email:

[executivedirector@sketchclub.org](mailto:executivedirector@sketchclub.org)

Late Breaking News – See items that were submitted after the publication date. Go to:

[info@sketchclub.org](mailto:info@sketchclub.org)

The PSC general email is: [info@sketchclub](mailto:info@sketchclub)

Gallery hours: Wednesday, Friday, Saturday, Sunday: 1 PM to 5 PM

August 2017

## Support the Sketch Club

### Contribute

Please consider making your tax-deductible contribution now. These funds will be put to good use providing enhanced services to our members and friends.

Membership dues cover only a small portion of the PSC's operating expenses. Competition for funding for arts organizations like the Sketch Club is increasingly competitive and total funding for the arts is shrinking. Your additional support will keep the PSC an active support for visual artists in the Metropolitan Philadelphia area. The Philadelphia Sketch Club is an IRS designated 501(c) (3) non-profit organization which allows your donations to be tax deductible.

You can call the office at 215-545-9298, mail checks to the Sketch Club or visit the Contribute page of our Website.

Visit our **Contribute** page of our website to give online at:

<http://sketchclub.org/support-us/>

### Smile.Amazon.Com

Support the Sketch Club when you purchase from Amazon, use Amazon Smile  
**It costs you nothing and makes money for the PSC**

The Sketch Club's AmazonSmile Link: <http://smile.amazon.com>

Thank you for your participation in the AmazonSmile program.

Purchases made by Sketch Club supporters using AmazonSmile in May resulted in a \$27.15 AmazonSmile contribution to the PSC. It's not much, but every cent helps. So don't forget, use the above link when purchasing from Amazon and increase the PSC's income.

### What is AmazonSmile?

Amazon Smile is a simple and automatic way for you to support your favorite charitable organization every time you shop, at no cost to you. When you shop at smile.amazon.com, you'll find the exact same low prices, vast selection and convenient shopping experience as Amazon.com, with the added bonus that Amazon will donate a portion of the purchase price to your favorite charitable organization. You can choose from nearly one million organizations to support.

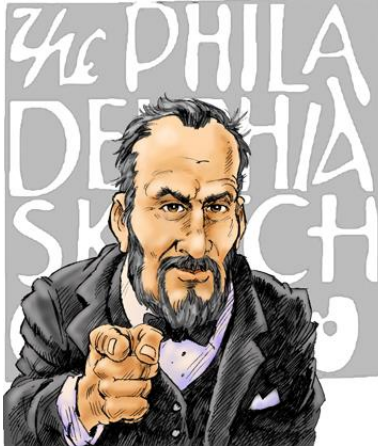
To learn more about Amazon Smile go to: <http://smile.amazon.com/gp/aw/ch/about>

Gallery hours: Wednesday, Friday, Saturday, Sunday: 1 PM to 5 PM

August 2017

## Support the Sketch Club

### Volunteers are **Always** needed!



We are now seeking a PSC member with great organizational skills to assist in managing the Member Dinner arrangements. If you want to get involved in this important PSC activity, please contact us ACAP at:

[executivedirector@sketchclub.org](mailto:executivedirector@sketchclub.org)

Other volunteer opportunities:

- Gallery Sitting
- Accept/Return Work
- Special Projects
- Assist with Exhibition Tasks

Help the PSC with important positions within the PSC that need volunteers to take over! Contact [Faad Ghoraishi](mailto:Faad.Ghoraishi@sketchclub.org) at to help your club with future events

### Calling all artists - Board Members and volunteers to PAINT, not the town but the Sketch Club!

We are in need of a splash of paint to freshen: the front entrance vestibule; second floor Gallery window (interior), which has just been renovated; the Garden Shed Door and Garden Entrance Gate from Latimer Street and radiators in the second floor Gallery. Hopefully, with teamwork, we can have these projects completed in time for our Gala on October 21st.

We will have more projects in store for the winter months to shed your cabin fever. What better way than to be with fellow members.

Please contact Michelle Lockamy at 215-545-9298 or at her email address at: [executivedirector@sketchclub.org](mailto:executivedirector@sketchclub.org)."

Chuck Tarr,

House Chair

Gallery hours: Wednesday, Friday, Saturday, Sunday: 1 PM to 5 PM

August 2017

## Support the Sketch Club



**Sketch Club Members receive a  
25% discount at Merion Art.  
Use promo code "PSC"  
online at [www.merionart.com](http://www.merionart.com)**

"Our staff of experienced artists, custom framers, and designers can answer your art materials questions and help to creatively solve all your artistic problems. Stop in our store for personalized friendly attention, or go to [merionart.com](http://merionart.com) for access to thousands of quality art products!"

Monday - Friday: 8:30am - 6:00pm  
Saturday: 9:00am - 5:30pm  
Sunday: 12:00pm - 5:00pm

**Merion Art & Repro Center**  
17 West Lancaster Avenue  
Ardmore, PA 19003

(610) 896-6161 - Phone  
(610) 896-7781 - Fax

## PHOTOLounge

The **PHOTOLounge** supports the Philadelphia Sketch Club and its members:

**Sketch Club Members receive a 15% discount at PHOTOLounge.  
Use online promo code "sketch".**

The PHOTOLounge is located at 1909 Chestnut St. Philadelphia PA 19103.

For nearly 20 years, PHOTOLounge's focus has been the simple idea that pictures should be beautiful, affordable, and long lasting. We're a very adept photo lab with diverse services from iPhone printing to shoebox scanning. You can bring us film for processing, and also order prints [online](#), or from the [App](#). Come in and print your world.

**Sketch Club Members receive a 15% discount at PHOTOLounge.  
Use online promo code "sketch".**

**267-322-6651 – [www.myphotolounge.com](http://www.myphotolounge.com)**



Gallery hours: Wednesday, Friday, Saturday, Sunday: 1 PM to 5 PM

August 2017

## Support the Sketch Club

### Sketch Club members receive 20% discount




**We offer a variety of framing materials and techniques including:**

- Archival / conservation treatment • Specialty mats (Linen, Suede, Silk)
- Stretching / Blocking of needleart and oils
- 1000's of moulding choices • 22 karat finished corner frames • Memorabilia framing
- Custom toning / coloring • Decorative mat cuts • French matting • Fillets
- Mirrors • Shadowboxing • Dry Mounting

www.CanalFrame.com • CanalFrame@comcast.net • 215-493-3660  
1093 General Greene Road, Washington Crossing, PA 18977

Framing Family Treasures for over 20 Years



### Like, Link & Share

If you're not following the Philadelphia Sketch Club on Facebook re-tweeting Sketch Club tweets yet, it's time that you did. We have well over 2000 Facebook followers. Get the word out about the Sketch Club. Please click the like button and share your comments and invite your friends to like our page.

Follow @PhilaSketchClub on Twitter, we have almost 400 followers. Please click the heart button and re-tweet our announcements.

Include links on your website, blogs and social media to The Philadelphia Sketch Club to increase traction across social media platforms.

Follow us on Facebook, Twitter and Instagram now!

Thanks to Don Brewer and Michelle Lockamy for managing PSC social media sites.



Gallery hours: Wednesday, Friday, Saturday, Sunday: 1 PM to 5 PM

August 2017

## Membership

### Not a PSC Member?: Join Now!

If you're reading this edition of the Portfolio and you're not a member of the PSC, you should consider joining the more than 200 other Philadelphia area artists who have. The PSC is one of the most active visual art venues serving center city Philadelphia. The PSC is a hands-on organization that offers its members the opportunity to participate in all aspects of creating and presenting work to the public. It presents over 20 scheduled group and solo exhibitions annually and offers a wide range of daily workshops. [Get info and an application here.](#)

If you are a member of the PSC, please feel free to share the Portfolio with your artist friends and encourage them to become members.

### Membership Renewal

You can check the status of your membership by going to the Current Members page on the PSC web-site: <http://sketchclub.org/sample-page/memberspace/>. All current members are listed. An asterisk (\*) means that the membership has expired but is within the 60-day grace period for renewal. Names in red are active links to the individual's web site.

Renew Now! <http://sketchclub.org/annual-dues-payment/>

If you have any questions about your membership, please don't hesitate contact us at [membership@sketchclub.org](mailto:membership@sketchclub.org) or call the office: 215-545-9298.

Gallery hours: Wednesday, Friday, Saturday, Sunday: 1 PM to 5 PM

August 2017

## Sketch Club Activities

### The Philadelphia Sketch Club's 157<sup>th</sup> Anniversary Gala

Please join us for our 157th Anniversary Gala on Saturday, October 21st. The Gala will be held at the Philadelphia Sketch Club, 235 S. Camac Street, Philadelphia, PA 19107, from 6 to 10 PM. You will have a fun time and get to mix with many prominent members of the artistic community. At the Gala, we will honor three of America's top artists, Alan Fetterman, Al Gury and Signe Wilkinson, with the presentation of the Philadelphia Sketch Club Medal. Below is a notice of the event that will appear in the September issue of ICON Magazine.

We are in the process of forming an Honorary Gala Committee whose membership will include many prominent individuals from the artistic community.

The main job of the Honorary Gala Committee is to encourage people to attend the event. The Honorary Gala Committee currently includes: David R. &

Holly Trostle Bringham (David is President and CEO of PAFA and Holly is an Artist); William R. Valerio, Director & CEO, Woodmere Art Museum; Lisa Tremper Hanover, Director & CEO, James A. Michener Art Museum;; and David Weiss, Vice President at Freemans, a specialist on the *Antiques Roadshow* and guest auctioneer for the Gala auction. Other prominent members of the artistic community will be added to this group. In addition to the medal presentations, highlights of the evening will include an unreserved live auction of artworks by the honored artists as well as some donated contemporary and historic works by Henry Pitz, Carl Weber, Mildred Sands Kratz, Vincent Ceglia and David Shevlino. There will be an open bar, hors d'oeuvres and a buffet dinner.

You can order tickets at [Purchase Gala Tickets](http://www.sketchclub.org) or by calling 215-545-9298. Please order tickets promptly as we must provide a headcount to our caterer plus our capacity may be exceeded by the demand for tickets.

[www.sketchclub.org](http://www.sketchclub.org)



Gallery hours: Wednesday, Friday, Saturday, Sunday: 1 PM to 5 PM

August 2017

## Sketch Club Activities

Critique Night – *July and August vacation*

**Next Meeting: September 20th, 2017**

**Open to PSC Members and Non-Members**

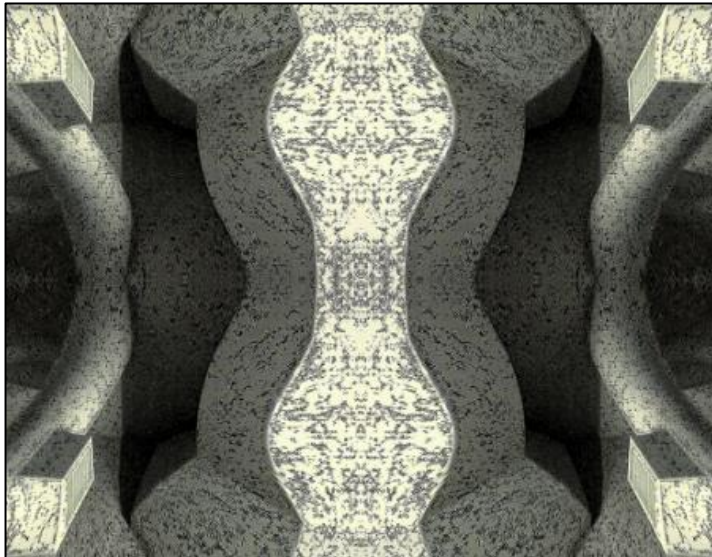
RSVP to **Michelle Lockamy** at 215-545-9298 or  
[executivedirector@sketchclub.org](mailto:executivedirector@sketchclub.org)

Critique Night is held in the Library of the Sketch Club every third Wednesday beginning at 7 PM. Bring work you've finished, work in progress, or just sketches for work you're planning! Photos, digital work, drawings, all mediums are welcome; we can project digital images on a screen for review, so you have the option to show work that may be too big or too heavy to transport to the Club. There is no one individual directing the critique, just your fellow artists and peers. Facilitated/monitored by **Rich Harrington**, PSC President



Photo Circle– *July and August vacation*

**Next Meeting: September 14th, 2017 from 6:30 to 8:30 PM**



The Photo Circle meets every 2<sup>nd</sup> Thursday at 6:30 PM. You can contact Steve anytime at [si22@drexel.edu](mailto:si22@drexel.edu) or 215-300-9192 (cell). **Steve Iwanczuk**, Photo Circle Monitor and Member of Philadelphia Sketch Club Board of Directors.



Gallery hours: Wednesday, Friday, Saturday, Sunday: 1 PM to 5 PM

August 2017

## Sketch Club Activities

### Key Circle Volunteers

**Key Circle Volunteers:** Alice Chung, Wayne Franks, Faad Ghoraishi, Donald Kuetemeyer, Katy Lin, Marilee Morris, Rosa Kim Paik, Lauren Sweeney, Gail Williams

#### The story behind the “Key Circle” volunteer group

There are many types of volunteer activities that are essential to maintaining the Sketch Club as a vibrant art club and showcase for outstanding art. For the last year a small group of member volunteers dubbed the “Key Circle” has been working to help the Club be reliably open during scheduled weekend gallery hours, as well as drop-off and pick-up sessions, jurying sessions, etc. – all the background work that goes into putting on each show.



**GALLERY  
OPEN**

*Admission is Free*



We are dubbed the “Key Circle” because each of us has direct access to open the club. This also means that one of our 8-member group should be signed up for each session so the other volunteers can be assured of access. Equally importantly, Key Circle members quickly become more familiar with many aspects of Sketch Club functioning – and thus more comfortable handling all manner of situations.

This past year, over 50 total volunteers staffed the galleries on weekends, drop-off and pick-up events. Even though many volunteered just a few times during the year, those numbers added up to fully staffed shows for much of the year, at least until the busy fall season. It would make all the difference going forward if the Key Circle group could be expanded from its current 8 members to 12 or more, and if we could gain a modest increase in volunteering from the group of 50 volunteers, or add a few more volunteers. Perhaps members could add a volunteer session for every show in which they get a work accepted. Then invite your friends and colleagues to visit the club when you are there. Just a thought!

If you are now curious about joining the key circle, or just interested in becoming more knowledgeable about how to do certain things as a regular volunteer, the next time you volunteer ask your Key Circle partner to explain things more fully. Are you mystified by what to do if someone inquires about buying a work of art when no one is there to open the office? How to turn up the thermostat? How to buzz a visitor in? No one learns these things overnight, or just from reading a set of instructions. (However, there is a detailed lime-green Volunteer notebook in the hall outside the office that contains all sorts of useful information about the club.) For those who are considering stepping it up a notch to become a key circle member, consider that volunteering event your first “training session” to become a key circle person.

To get more information, please contact a Key Circle member at [info@sketchclub.org](mailto:info@sketchclub.org)

Gallery hours: Wednesday, Friday, Saturday, Sunday: 1 PM to 5 PM

August 2017

## Sketch Club Activities

### Philadelphia Sketch Club Plein Air Paint Out at Paradise Falls

**Rain or Shine. 10 AM to 10 PM Saturday August 12<sup>th</sup>, 2017**

The members of the Philadelphia Sketch Club (PSC) are invited to spend the day painting in the Pocono mountains, at Paradise Falls Lutheran Association (PFLA), a quiet private association with 400 acres of forest, fields, and the beautiful Paradise Falls.

**Paradise Falls Lutheran Association**  
**103 Beach Rd,**  
**Cresco, PA 18326**



One-day event for plein air painting at PFLA for members of the PSC, Saturday August 12, Rain or Shine.

Come paint along woodland trails, the lake and dam, a heritage hemlock forest, or the stream and water falls.

Arrive at Gate Lodge, centrally located at the main entrance to the PFLA, with parking and next to the Lounge the Social Hall. Maps of PFLA will be provided. Restrooms are available, and a refrigerator to store food.

Artists can meet back at the Lounge to eat their dinners around 5:30 PM.

At 7 PM is an evening art show of the day's work at the Lounge, for group critique and PFLA members.

Host and Point of Contact for the Day's events is Don Gauger. For more information: [info@sketchclub.org](mailto:info@sketchclub.org)

<http://pfla.org/wordpress/contact/how-to-get-here/>

Cottages for rent page from the PFLA website: <http://pfla.org/wordpress/association/homes-for-rent/>

Area lodging: [https://www.tripadvisor.com/Hotels-g52812-Henryville Pocono Mountains Region Pennsylvania-Hotels.html](https://www.tripadvisor.com/Hotels-g52812-Henryville_Pocono_Mountains_Region_Pennsylvania-Hotels.html)

A few close places to dine:

<http://www.kasaspizza.com/> <http://www.crescentlodge.com/restaurant.html>

<http://www.cookscornerrestaurant.com>

Founded in 1922 as a summer retreat for Lutheran's, today the PFLA membership is open to all.

Gallery hours: Wednesday, Friday, Saturday, Sunday: 1 PM to 5 PM

August 2017

## Sketch Club Activities

### Limited Edition PSC Glassware: Still a few left

We have a limited number of stemless wine glasses which have the Club logo on one side and the Club corporate seal on the reverse. We are offering these for sale at the price of \$15 for two glasses to members while the supply lasts. Place your order by emailing Michelle at [executivedirector@sketchclub.org](mailto:executivedirector@sketchclub.org) or calling 215-545-9298. Please indicate when you will pick-up and pay for the glasses your order.



Gallery hours: Wednesday, Friday, Saturday, Sunday: 1 PM to 5 PM

August 2017

## Member Activities

### Monthly Meeting and Dinner – Summer vacation



Next Dinner - Friday September 8th, 2017

Check for updates at: <http://sketchclub.org/>

## Help Wanted

PSC member, **Don Gauger**, wants to kickstart collecting PSC oral history from our senior membership and past members). Suggestions for other recommendations will be considered. If grant sources are available, please pass info on to Don and he'll be glad to write and apply for the grant to help fund the work, which would speed the effort along vs. my doing as catch can.

My intent is to gather oral history, then save all materials to our archive, and deliver a second copy to the Smithsonian Museum for American Art's Oral History project archives. Further activity ideally would extract portions of the oral history as articles for the Portfolio, and/or on-line articles, and, whenever possible, creating a bio of prominent past members, as a way to add to our existing collection of bios/memorials.

Don can be contacted via [info@sketchclub.org](mailto:info@sketchclub.org)



Gallery hours: Wednesday, Friday, Saturday, Sunday: 1 PM to 5 PM

August 2017

## 2017 Main Gallery Schedule

Now in the Main Gallery Until August 12:

### 2017 Absolutely Abstract

July 21 to Aug 12, 2017

See the on-line gallery:

<http://sketchclub.org/absolutely-abstract-2017/- gallery>



PSC President, Rich Harrington (far right) with 2017 award winners

Gallery hours: Wednesday, Friday, Saturday, Sunday: 1 PM to 5 PM

August 2017

## 2017 Main Gallery Schedule


### EMERGING ARTISTS: Young Philadelphia Artists at the Philadelphia Sketch Club

August 25<sup>th</sup> to September 20, 2017

The Philadelphia Sketch Club will recognize young Philadelphia artists who have started on promising careers through this exhibition. 18 young Philadelphia artists under the age of 30 will be exhibiting their work in the Club's main gallery. An Opening reception is scheduled for Sunday September 10<sup>th</sup>, 2017, from 2 to 4 PM.

Artists participating in this exhibition include:  
Thomas LaPine, Heather McMordie, Claire Kincaide, Bettina Nelson, Katie Batten, Hillary Kursh, Steve Basel, Nick Blake, Drew Kohler, Sean Hildreth


Elizabeth F. Spungen, Mat Tomeszko, John Syner, SaraNoa Mark, Liza Samuel, David Love, [Sophie Brenneman](#), and [Emily White](#).



The Philadelphia Sketch Club presents  
**EMERGING ARTISTS:**  
Young Philadelphia Artists

August 25<sup>th</sup> to September 20, 2017

Opening Reception  
Sunday, September 10<sup>th</sup>  
from 2 to 4 PM



Gallery hours: Wednesday, Friday, Saturday, Sunday: 1 PM to 5 PM

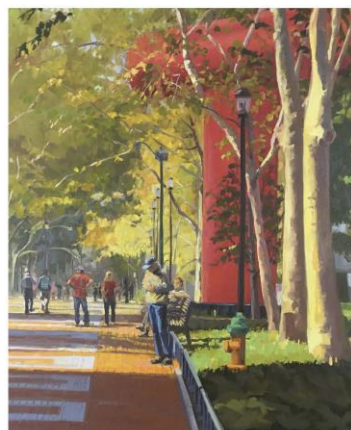
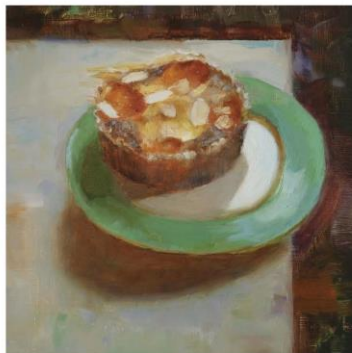
August 2017

## 2017 Main Gallery Schedule

### Upcoming Exhibitions

## 2017 Annual Members' Exhibition

September 29 – October 25, 2017



Art: (top left, clockwise) Maria Kurtzman, "Apricot Tart" 10x10" Oil on linen. Joe Sweeney, "Egret" 16x19" Oil/museum board. Patrick Connors, "Early Spring Morning, Twin Sycamores" 20x16" Oil on linen. Elaine Lisle, "On Locust" 36x24" Oil/canvas.

### 2017 Annual Members' Exhibition

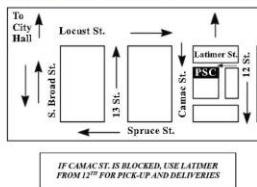
Enter online: [sketchclub.org/psc-official](http://sketchclub.org/psc-official)

See Prospectus online for more details. This is a Non-juried show open only to PSC Members in good standing.

**Deadline:** Sunday, September 17, 2017 at Midnight

**Exhibition Dates:** September 29 – October 25, 2017

**OPENING** | **Saturday, October 7, 2017** | **11 AM to 6 PM**  
**RECEPTION** | Free and open to the public



Cover Art: (top left, clockwise) Maria Kurtzman, "Apricot Tart" 10x10" Oil on linen. Joe Sweeney, "Egret" 16x19" Oil/museum board. Patrick Connors, "Early Spring Morning, Twin Sycamores" 20x16" Oil on linen. Elaine Lisle, "On Locust" 36x24" Oil on canvas.



The Philadelphia Sketch Club is the oldest artist club in America. It has had many noted members to include Thomas Eakins, N. C. Wyeth, Thomas Anshutz, Joseph Pennell, Howard Chandler Christy, Thomas Moran and a host of others. A young Thomas Eakins taught life workshops at the Sketch Club in 1874 and 1875 and used that experience to gain a position at the Pennsylvania Academy of the Fine Arts. During that time in 1875, Eakins at the age of thirty painted his most memorable painting, *The Gross Clinic*.

### The Philadelphia Sketch Club

235 South Camac Street | Philadelphia, PA 19107 | (215) 545-9298 | [www.sketchclub.org](http://www.sketchclub.org)  
**Gallery hours:** Wednesday, Friday, Saturday, Sunday 1-5 PM



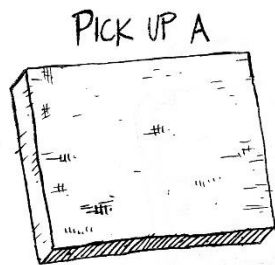
Gallery hours: Wednesday, Friday, Saturday, Sunday: 1 PM to 5 PM

August 2017

## 2017 Main Gallery Schedule

Coming in December:

**The Annual Legacy Holiday Art Show and Sale December 2<sup>nd</sup> thru 17<sup>th</sup>**



### Christmas in August...?

Nope- The Annual Legacy Holiday Art Show and Sale is scheduled for December 2nd thru 17th, 2017, and it is not too early to think about creating a piece to help support the Sketch Club.

This year, Blick Artist Materials in Philadelphia have donated 41 9 x 12 stretched canvasses to the PSC. These canvasses are available on a first come, first serve basis for any PSC member who would like to use one to create a work for sale at the Legacy Art Show and Sale in December. A canvas can be picked up at the PSC on Wednesdays or Fridays from 11 AM to 5 PM, or arrangements can be made to pick one up by emailing Michelle Lockamy at [executivedirector@sketchclub.org](mailto:executivedirector@sketchclub.org).

Members who take a canvas will be expected to have the finished work framed, wired, and ready to hang in the Legacy Show by November 26th, 2017. Digital images of work finished before November 1st 2017 should be sent to Kevin Meyers, the Exhibition Chair, for use in exhibition publicity and for display in the PSC online gallery. As per the tradition of the PSC Legacy Holiday Show and Sale, any other works provided by members for the exhibition will fall under the guidelines of the exhibition prospectus.

The Exhibition Prospectus will be on the PSC website soon, but the canvasses are available now!





Gallery hours: Wednesday, Friday, Saturday, Sunday: 1 PM to 5 PM

August 2017

## 2017 Stewart Gallery Schedule

The New Members Show opens in the Stewart Gallery

August 25 to September 17<sup>th</sup>, 2017

New Members Show: Reception: Sunday, September 10th, with greeting and remarks in the Stewart Room from 1-2pm, and the reception for the Emerging Artists in the upstairs Gallery from 2-4pm.

## Exhibition Schedule and Events Calendar Always Available at [sketchclub.org](http://sketchclub.org)

Don't forget, you can always see the schedule for the coming year on the PSC web-site. Go to the Calendars/Events menu and select Exhibition Schedule. Here's the link:

<http://sketchclub.org/exhibitions/>. And new for this year, we've added an Events Calendar under the Calendars/Events menu. This calendar will show a complete list of the dates for important activities and deadlines. See it here: <http://sketchclub.org/calendar/>



Gallery hours: Wednesday, Friday, Saturday, Sunday: 1 PM to 5 PM

August 2017

## Sketch Club Open Workshop Schedule

All workshops are open to the public. There is no need to register before attending. You do NOT have to be a member of the Philadelphia Sketch Club to participate in the workshops. Our workshops are open to anyone who is interested in drawing, painting or printmaking. All skill levels are welcome. Fees: Model workshops: \$8/session members, \$9/session for non-PSC members; Printmaking workshop: \$10/session; All workshops \$6 for full-time students. Monitored by PSC members.

Life Model	Costumed Model	Printmaking
Mondays – Extended pose (multi-session): 6:30 PM-9:30PM  Monitors: Robert Bohne, Vince Docktor, Dan Kuetemeyer  Tuesdays – Extended pose: 12:00 PM to 3:00 PM Monitor: Jacqueline Barnett  Wednesdays – Extended pose: 6:30 to 9:30 PM Monitor: Vince Docktor  Saturdays – Extended pose: 9:30 AM to 12:30 PM Monitor: Vince Docktor	Thursdays  Extended pose  12:00 PM to 3:00 PM Monitor: Bob Bohne.	Tuesdays  10:00 AM to 2:00 PM Monitor:  Elizabeth H. MacDonald

**Please Note: Those who use oil paints should bring their own container(s) to remove used solvents. Odorless solvents only.**

Gallery hours: Wednesday, Friday, Saturday, Sunday: 1 PM to 5 PM

August 2017

## Art Natters: Members News

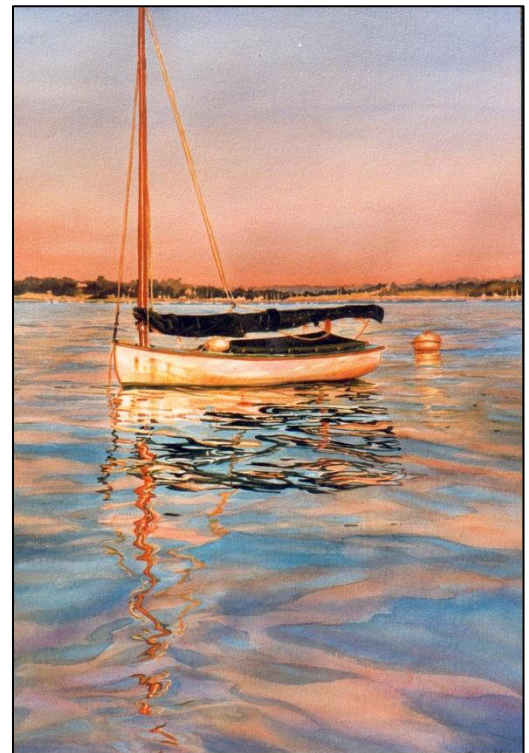
PSC member, **Su Knoll Horty** has been invited back to Hardcastle Gallery in Centreville, DE, to exhibit in their upcoming 2017 Annual Holiday Miniature Art Show. The exhibit will run November 24<sup>th</sup> to January 6, 2018.

Also, Su is pleased to announce that Bluestone Fine Art Gallery, Old City, Phila., will be expanding in August, to a satellite location at Normandy Farm Hotel & Conference Center in Blue Bell, PA.

PSC member, **Brenda Bechtel's** "Red Lily Pond~Turtle Soup" is included at the Rhode Island Watercolor Society. This All Media Exhibition is on view through August 4. The Salmagundi Club Non-Member Exhibition includes "Papyrus with Elephant Ears" through August 12, Reception & Awards given 7 - 9 on the 11th, 47 Fifth Ave, Manhattan. The Bennington Collective Inaugural Member Exhibition has been announced and I am happy my Art is included, more news to follow. Details may be found at [BrendaLBechtel.com](http://BrendaLBechtel.com)



**Windswept at Beach Point**



**Anchored in Morning Light**



Gallery hours: Wednesday, Friday, Saturday, Sunday: 1 PM to 5 PM

August 2017

## Art Natters: Members News

PSC member **Alice Chung** will have a solo Exhibition at Center on the Hill in September, 2017. She will be exhibiting 24 works at 8855 Germantown Avenue, Philadelphia, PA 19118. Also she is exhibiting 10 works at Henry Gallery, Penn State Great Valley (PAC Group Exhibition) until Aug 26.

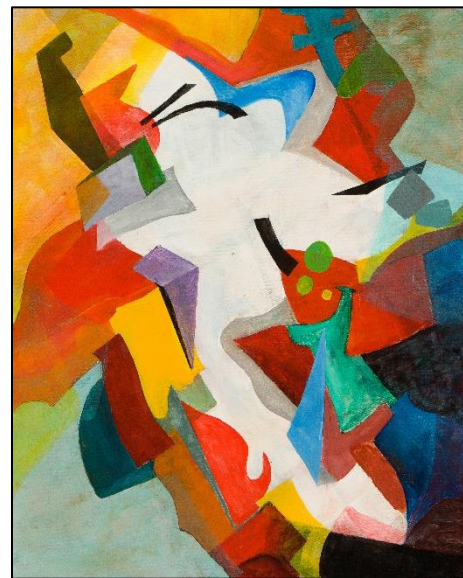


Neighborhood

PSC member, **Ken Weiner** has two pieces in the 2017 Absolutely Abstract exhibition, now showing in the upstairs gallery until August 12<sup>th</sup>.



White Shape 1



White Shape 2



Gallery hours: Wednesday, Friday, Saturday, Sunday: 1 PM to 5 PM

August 2017

## Art Natters: Members News

PSC member **Robert Hansen's** Solo Show at Foulkeways

Foulkeways at Gwynedd will feature 25 recent paintings by Mt Airy artist, an PCS member, Robert Hansen during the month of August, 2017. Hansen's vivid acrylic abstract works are inspired by subjects as commonplace as rain and as dramatic as the natural sites of Arizona, Mexico, Iceland, and Spain.

Hansen describes his method as intuitive and experimental; he chooses a color palette and lets the composition evolve. During the process accidents and surprise effects are often incorporated into the work.

Hansen's paintings have been shown frequently at Phillips Mill in New Hope, PA, Allen's Lane Art Centre, the Philadelphia Sketch Club, and in the 2017 ArtJam in Princeton, New Jersey.

Patrons may see his paintings daily August 2-29 from 9 AM to 8 PM at the Foulkeways Community Center Gallery, 1120 Meeting House Rd, Gwynedd, PA, 19436. Guests are asked to check in with reception. Hansen will be on hand at the gallery to meet visitors Aug 7th, 6:30 to 8 PM.

Contact [robertwhansen726@gmail.com](mailto:robertwhansen726@gmail.com). Hansen's paintings may be previewed at [www.roberthansenart.com](http://www.roberthansenart.com).

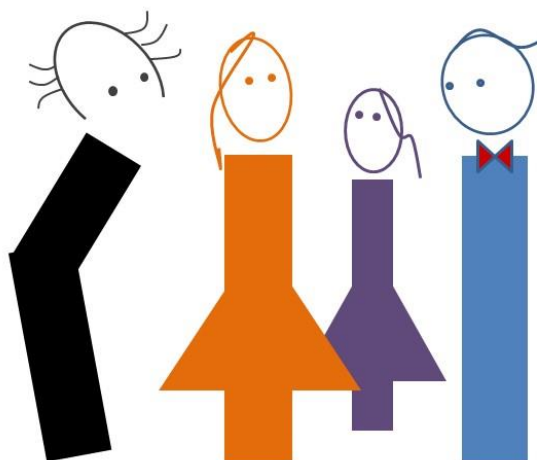


Cozumel

PSC member **Ben Cohen**

### BEN COHEN and friends

MARLENE CRAIG – JOYCE McAFEE  
DAVID WATSON



Showing at Medford Memorial  
Community Center  
21 S Main St, Medford  
Sept. 5th – Nov. 6th, 2017

**Reception**  
Friday, Sept. 8th, 6-8 PM

[MedfordArts.com](http://MedfordArts.com)

Ink  
Gouache  
Oil  
Watercolor  
Acrylic  
PASTEL

Gallery hours: Wednesday, Friday, Saturday, Sunday: 1 PM to 5 PM

August 2017

## Art Natters: Members News

PSC gallery manager, **Michelle Lockamy** will be in a group show this summer, The Wondrous World of Children's Book Illustrators.

[Go to Facebook Page](#)



*The Wondrous World  
- of -  
Children's Book Illustrators*

*Michelle Lockamy      Yuko Katakawa  
Patricia Keeler      Melissa Iwai  
Naroth Kean      Mike Ciccotello*

Thursday June 22 to August 17, 2017

Please join us and meet the artists at the  
**Opening Reception · Thursday June 22, 2017 · 5:30 - 7:30 pm**

The Galleries of the Interchurch Center · 475 Riverside Drive NY, NY 10115 · Gallery Hours: Mon. - Fri., 9-5

Gallery hours: Wednesday, Friday, Saturday, Sunday: 1 PM to 5 PM

August 2017

## Art Natters: Members News

PSC member **Doris Peltzman** has a busy summer ahead with exhibits in P.A. and N.J.

8 mini oils on birch 6"x 6" are on exhibit at Wilson Vineyard Gallery in Nottingham, P.A. Wayne Art Center has 2 oils on exhibit July 20-August 18, 2017, Wayne, P.A. LeLe Fashion Collective at 323 Arch Street.

In New Jersey at: Wildflowers Too, Long Beach Island (Barnagat Light) has several very large and very small oils. Medford Art Center in Medford, N.J. has 3 oils on exhibit until September, 2017.



## Memorial

A beloved member of the Sketch Club, **Hanna Aufschauer** passed away on July 22. She had been a member for many years attending the Tuesday and Thursday workshops regularly. As an avid gardener, she contributed considerably to the garden at the Sketch Club. An area of the garden will be dedicated with a memorial marker to Hanna. She was also a print monitor at the Fleisher Memorial. exhibiting her drawings and prints in various shows in the area including the Sketch Club. Always generous, friendly and interesting, with lots of advice on the best restaurants in Philly, Hanna was a friend to many in the workshops. Many in the workshops admired her sensitive and yet skillfully executed portraits of the models.

She is survived by her husband Steven Filippi.

Gallery hours: Wednesday, Friday, Saturday, Sunday: 1 PM to 5 PM

August 2017

## Calls for Work and Notices

### Or Hadash Staircase Gallery

Reconstructionist Congregation Or Hadash in Fort Washington, PA is housed in a historic building, formerly the summer mansion of well-known society families. We have adapted a formerly grand entrance staircase into what we call The Staircase Gallery.

The Staircase Gallery has been having 3 shows a year for over 14 years. We have had shows featuring a diverse group of painters, photographers, children's art, and illustrators. We have incorporated writings and travel logs into exhibits for multi-talented artists who work in multiple mediums.

We are always looking for local artists who would like to show their work. The application process is to simply let us know of your interest, sending us a link to a site where we can see your work. If the Gallery committee feels your work would work in our space, we will contact you to schedule a show. The school students pass through the gallery so we must consider what is appropriate viewing for them in our decision making process. Many artists make a list of prices available for sales. We provide assistance in the hanging of the show and let the artist know what supporting documents are typically displayed.

We are currently scheduling for the 2017 season and going forward. If you would like to have a show in our unique and charming gallery, please let us know at [mikeoswald@comcast.net](mailto:mikeoswald@comcast.net). We will start the process and let you know what the steps are if we go forward.

### Academy House Exhibition Opportunity

The Academy House art committee is now looking for pieces to display in our lobby starting sometime in April 2017. If any of your artists at the Philadelphia Sketch Club are interested, ask them to stop into the lobby (which now can be accessed only through 251 S. 15th Street) and look at the spaces currently being used. (The two pieces on the lobby level are smaller than we would prefer; the piece on the landing is an appropriate size.) If they think they have work that would be suitable for us, ask them to send photos and dimensions and we will take them up for consideration. Pieces displayed can be for sale, though the condo asks 20% of the selling price. Photos can be emailed to this address or dropped off at the front desk with my name on the envelope.

Thanks,  
Michael Goldman  
[academyhousearts@gmail.com](mailto:academyhousearts@gmail.com)  
1425 Locust Street  
Philadelphia, PA 19102

## Member Classifieds



Gallery hours: Wednesday, Friday, Saturday, Sunday: 1 PM to 5 PM

August 2017

Sketch Club Member **Sylvia Castellanos** looking for someone who can help me in the area of social media marketing of my paintings. I have been doing portraits and figurative paintings for several decades. I have a web site (sylviacastellanos.com), a Facebook professional page, a LinkedIn page, a Pinterest page and a You Tube channel with five videos. I want to be able to improve them, and to use them to reach a larger audience.

I also want to be able to use Facebook ads strategically to sell specific paintings. I want someone to teach me how to do it. I prefer that it be someone who has some background in using these skills specifically in a fine art context as well as in other areas. As a separate matter, I am also looking for someone who can serve as my representative with regard to certain functions, such as being the person who contacts institutions on my behalf.

If you feel you can do this or can recommend someone, please contact me through the Sketch Club. First please go to my web site and familiarize yourself with what I do.

PSC member, **Joanne Hirsh** is pleased to tell you that the Philadelphia real estate market has been quite active since the arrival of spring. We have all kinds of properties for sale or rent from condos to houses in our many neighborhoods at all price points.

Should you need assistance or just general information, I would be happy to help you. You can reach me at: joanne.hirsh@foxroach.com or 610-310-7062.

Happy Spring,

Joanne Hirsh

## Photography Services for Artists

Do you need high-quality digital images of your work? Is glare a problem? Color balance not quite right? I can help you get great images of your 2-D or 3-D work suitable for digital file output or output for presentation and hard-copy presentation. I offer flexible availability, willingness to travel, special pricing for Sketch Club members.

Contact PSC member **Ken Weiner** at [info@sketchclub.org](mailto:info@sketchclub.org).

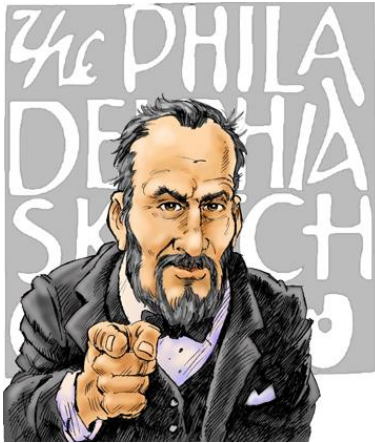
## Seeking Framers

Sketch Club members frequently ask about framing services. If you wish to provide framing services to PSC members, please contact the PSC at [info@sketchclub.org](mailto:info@sketchclub.org) or call the PSC office: 215 545-92908

Gallery hours: Wednesday, Friday, Saturday, Sunday: 1 PM to 5 PM

August 2017

## Call for Volunteers



We have important positions within the PSC that need volunteers to take over!  
Contact Faad Ghoraishi at to help your club with future events.

The Portfolio: The newsletter of the Philadelphia Sketch Club is published monthly. Editor: Ken Weiner; Technical support and Web Master: Ken Weiner

Send your member news, announcements and corrections to [portfolio@sketchclub.org](mailto:portfolio@sketchclub.org). The due date for all materials is one week before the end of the month.

Back issues of the Portfolio are available at: <http://sketchclub.org/portfolio-archive/>

### The Philadelphia Sketch Club

235 S Camac Street  
Philadelphia, PA 19107  
(215) 545-9298  
<http://sketchclub.org/>  
[executivedirector@sketchclub.org](mailto:executivedirector@sketchclub.org)

Gallery Manager: Michelle Lockamy

#### Officers:

- President: Richard Harrington
- Vice President: Kenneth Weiner
- Secretary: Fran Carter
- Treasurer: William Patterson

#### Board of Directors

- Elise Anzini
- Jacqueline Barnett
- Vincent Docktor
- Stephen Iwanczuk
- William Kosman
- Kevin Myers
- Charles F. Tarr
- Joe Winter