

Gallery hours: Wednesday, Friday, Saturday, Sunday: 1 PM to 5 PM

October 2017



Michelle Lockamy

This Month's Portfolio

The Sketch Club's 157th Anniversary Gala	2
Support the Sketch Club	5
Membership	8
Sketch Club Activities	9
Member Activities	11
2017 Main Gallery Schedule	12
2017 Stewart Gallery Schedule	15
Sketch Club Open Workshop Schedule	16
Art Natters: Members News	17
Calls for Work and Notices	23
Member Classifieds	25
Call for Volunteers	26
Send your member news, announcements and corrections to portfolio@sketchclub.org . The deadline for ALL submissions is 1-week before the end of the month.	

Reminder: It's never too late. You can always renew your membership

You may pay online at <http://sketchclub.org/annual-dues-payment/>

or mail your check to:

The Philadelphia Sketch Club
235 S. Camac St.
Philadelphia, PA 19107

For questions please contact the Gallery Manager at 213335-545-9298 or email:

executivedirector@sketchclub.org

Late Breaking News – See items that were submitted after the publication date. Go to:

info@sketchclub.org

The PSC general email is: info@sketchclub.org

Gallery hours: Wednesday, Friday, Saturday, Sunday: 1 PM to 5 PM

October 2017

The Sketch Club's 157th Anniversary Gala

The Philadelphia Sketch Club's 157th Anniversary Gala

Please join us for our 157th Anniversary Gala on Saturday, October 21st. The Gala will be held at the Philadelphia Sketch Club, 235 S. Camac Street, Philadelphia, PA 19107, from 6 to 10 PM. You will have a fun time and get to mix with many prominent members of the artistic community. At the Gala, we will honor three of America's top artists, Alan Fetterman, Al Gury and Signe Wilkinson, with the presentation of the Philadelphia Sketch Club Medal. Below is a notice of the event that appeared in the September issue of ICON Magazine.

In addition to the medal presentations, highlights of the evening will include an unreserved live auction of artworks by the honored artists as well as some donated contemporary and historic works by Henry Pitz, Domenic DiStefano, Carl Weber, Mildred Sands Kratz, Vincent Ceglia and David Shevlino. There will be an open bar, hors d'oeuvres and a buffet dinner.



You can order tickets at [Purchase Gala Tickets](http://www.sketchclub.org) or by calling 215-545-9298. Please order tickets promptly as we must provide a headcount to our caterer plus our capacity may be exceeded by the demand for tickets.

www.sketchclub.org

See Live Auction Items Below

Gallery hours: Wednesday, Friday, Saturday, Sunday: 1 PM to 5 PM

October 2017

The Sketch Club's 157th Anniversary Gala

The Philadelphia Sketch Club's 157th Anniversary Gala Live Auction Items

PHILADELPHIA SKETCH CLUB 157th ANNIVERSARY GALA
LIVE AUCTION ITEMS AND PROMOTIONAL ITEMS



Signe Wilkinson, *The Model President*, 2017, Pen and ink and markers on paper, 11.5" x 14"



Al Gury, *Mixed Bunch*, oil on panel, 12" x 9"

In addition to the shown items, the Live Auction will include artworks by Signe Wilkinson,



Alan Fetterman, *Colors in Carversville*, oil,



Each person attending the 2017 Gala will receive a 17 oz. "Iced Tea" Glass with Club Logo and Corporate Seal

Gallery hours: Wednesday, Friday, Saturday, Sunday: 1 PM to 5 PM

October 2017

The Sketch Club's 157th Anniversary Gala

More Philadelphia Sketch Club's 157th Anniversary Gala Live Auction Items



Mildred Sands Kratz, AWS, *Open Season On Decoys*,
watercolor, 21.25 x 28.75



Henry C. Pitz (1895-1976), *Pomp and Circumstances*,
watercolor, 24" x 30"



Dominic DiStefano, *Snowy Landscape*, Watercolor,
13" x 21"

Gallery hours: Wednesday, Friday, Saturday, Sunday: 1 PM to 5 PM

October 2017

Support the Sketch Club

Contribute

Please consider making your tax-deductible contribution now. These funds will be put to good use providing enhanced services to our members and friends.

Membership dues cover only a small portion of the PSC's operating expenses. Competition for funding for arts organizations like the Sketch Club is increasingly competitive and total funding for the arts is shrinking. Your additional support will keep the PSC an active support for visual artists in the Metropolitan Philadelphia area. The Philadelphia Sketch Club is an IRS designated 501(c) (3) non-profit organization which allows your donations to be tax deductible.

You can call the office at 215-545-9298, mail checks to the Sketch Club or visit the Contribute page of our Website.

Visit our **Contribute** page of our website to give online at:

<http://sketchclub.org/support-us/>

Calling all Artists - Board Members and volunteers to PAINT, not the town but the Sketch Club!

We are in need of a splash of paint to freshen: the front entrance vestibule; second floor Gallery window (interior), which has just been renovated; the Garden Shed Door and Garden Entrance Gate from Latimer Street and radiators in the second floor Gallery. Hopefully, with teamwork, we can have these projects completed in time for our Gala on October 21st.

We will have more projects in store for the winter months to shed your cabin fever. What better way than to be with fellow members.

Please contact Michelle Lockamy at 215-545-9298 or at her email address at: executivedirector@sketchclub.org."

Chuck Tarr,

House Chair

Gallery hours: Wednesday, Friday, Saturday, Sunday: 1 PM to 5 PM

October 2017

Support the Sketch Club



**Sketch Club Members receive a
25% discount at Merion Art.
Use promo code "PSC"
online at www.merionart.com**

"Our staff of experienced artists, custom framers, and designers can answer your art materials questions and help to creatively solve all your artistic problems. Stop in our store for personalized friendly attention, or go to merionart.com for access to thousands of quality art products!"

Monday - Friday: 8:30am - 6:00pm
Saturday: 9:00am - 5:30pm
Sunday: 12:00pm - 5:00pm

Merion Art & Repro Center (610) 896-6161 - Phone
17 West Lancaster Avenue (610) 896-7781 - Fax
Ardmore, PA 19003

PHOTOLounge

The **PHOTOLounge** supports the Philadelphia Sketch Club and its members:

**Sketch Club Members receive a 15% discount at PHOTOLounge.
Use online promo code "sketch".**

The PHOTOLounge is located at 1909 Chestnut St. Philadelphia PA 19103.

For nearly 20 years, PHOTOLounge's focus has been the simple idea that pictures should be beautiful, affordable, and long lasting. We're a very adept photo lab with diverse services from iPhone printing to shoebox scanning. You can bring us film for processing, and also order prints [online](#), or from the [App](#). Come in and print your world.

**Sketch Club Members receive a 15% discount at PHOTOLounge.
Use online promo code "sketch".**

267-322-6651 – www.myphotolounge.com

Gallery hours: Wednesday, Friday, Saturday, Sunday: 1 PM to 5 PM

October 2017

Support the Sketch Club

Sketch Club members receive 20% discount




We offer a variety of framing materials and techniques including:

- Archival / conservation treatment • Specialty mats (Linen, Suede, Silk)
- Stretching / Blocking of needleart and oils
- 1000's of moulding choices • 22 karat finished corner frames • Memorabilia framing
- Custom toning / coloring • Decorative mat cuts • French matting • Fillets
- Mirrors • Shadowboxing • Dry Mounting

www.CanalFrame.com • CanalFrame@comcast.net • 215-493-3660
1093 General Greene Road, Washington Crossing, PA 18977

Framing Family Treasures for over 20 Years



Like, Link & Share

If you're not following the Philadelphia Sketch Club on Facebook re-tweeting Sketch Club tweets yet, it's time that you did. We have well over 2000 Facebook followers. Get the word out about the Sketch Club. Please click the like button and share your comments and invite your friends to like our page.

Follow @PhilaSketchClub on Twitter, we have almost 400 followers. Please click the heart button and re-tweet our announcements.

Include links on your website, blogs and social media to The Philadelphia Sketch Club to increase traction across social media platforms.

Follow us on Facebook, Twitter and Instagram now!

Thanks to Don Brewer and Michelle Lockamy for managing PSC social media sites.



Gallery hours: Wednesday, Friday, Saturday, Sunday: 1 PM to 5 PM

October 2017

Membership

Not a PSC Member?: Join Now!

If you're reading this edition of the Portfolio and you're not a member of the PSC, you should consider joining the more than 200 other Philadelphia area artists who have. The PSC is one of the most active visual art venues serving center city Philadelphia. The PSC is a hands-on organization that offers its members the opportunity to participate in all aspects of creating and presenting work to the public. It presents over 20 scheduled group and solo exhibitions annually and offers a wide range of daily workshops. [Get info and an application here.](#)

If you are a member of the PSC, please feel free to share the Portfolio with your artist friends and encourage them to become members.

Membership Renewal

You can check the status of your membership by going to the Current Members page on the PSC web-site: <http://sketchclub.org/sample-page/memberspace/>. All current members are listed. An asterisk (*) means that the membership has expired but is within the 60-day grace period for renewal. Names in red are active links to the individual's web site.

Renew Now! <http://sketchclub.org/annual-dues-payment/>

If you have any questions about your membership, please don't hesitate contact us at membership@sketchclub.org or call the office: 215-545-9298.

Gallery hours: Wednesday, Friday, Saturday, Sunday: 1 PM to 5 PM

October 2017

Sketch Club Activities

Critique Night – Next Meeting: October 18th, 2017

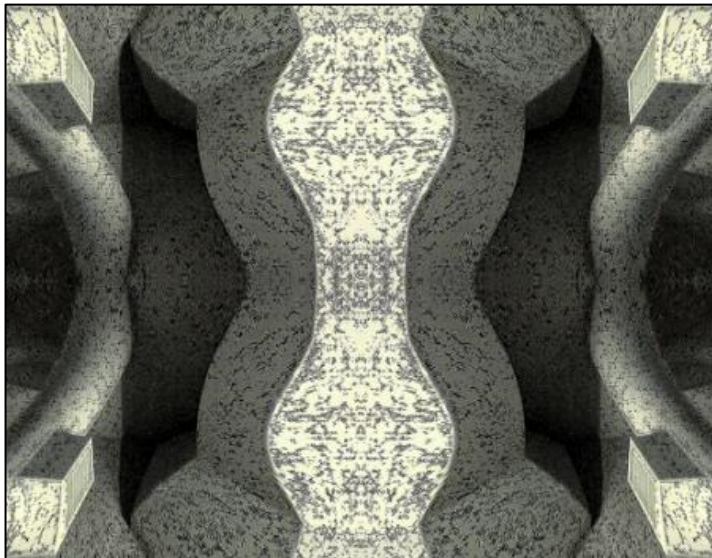
Open to PSC Members and Non-Members

RSVP to **Michelle Lockamy** at 215-545-9298 or
executivedirector@sketchclub.org

Critique Night is held in the Library of the Sketch Club every third Wednesday beginning at 7 PM. Bring work you've finished, work in progress, or just sketches for work you're planning! Photos, digital work, drawings, all mediums are welcome; we can project digital images on a screen for review, so you have the option to show work that may be too big or too heavy to transport to the Club. There is no one individual directing the critique, just your fellow artists and peers. Facilitated/monitored by **Rich Harrington**, PSC President



Photo Circle– Next Meeting: October 12th, 2017 from 6:30 to 8:30 PM



We will discuss new group activities and possibilities for expansion. The Photo Circle meets every 2nd Thursday at 6:30 PM. You can contact Steve anytime at si22@drexel.edu or 215-300-9192 (cell). **Steve Iwanczuk**, Photo Circle Monitor and Member of Philadelphia Sketch Club Board of Directors.

Gallery hours: Wednesday, Friday, Saturday, Sunday: 1 PM to 5 PM

October 2017

Sketch Club Activities

Key Circle Volunteers

Key Circle Volunteers: Alice Chung, Wayne Franks, Faad Ghoraishi, Donald Kuetemeyer, Katy Lin, Marilee Morris, Rosa Kim Paik, Lauren Sweeney, Gail Williams

The story behind the “Key Circle” volunteer group

There are many types of volunteer activities that are essential to maintaining the Sketch Club as a vibrant art club and showcase for outstanding art. For the last year a small group of member volunteers dubbed the “Key Circle” has been working to help the Club be reliably open during scheduled weekend gallery hours, as well as drop-off and pick-up sessions, jurying sessions, etc. – all the background work that goes into putting on each show.

We are dubbed the “Key Circle” because each of us has direct access to open the club. This also means that one of our 8-member group should be signed up for each session so the other volunteers can be assured of access. Equally importantly, Key Circle members quickly become more familiar with many aspects of Sketch Club functioning – and thus more comfortable handling all manner of situations.

This past year, over 50 total volunteers staffed the galleries on weekends, drop-off and pick-up events. Even though many volunteered just a few times during the year, those numbers added up to fully staffed shows for much of the year, at least until the busy fall season. It would make all the difference going forward if the Key Circle group could be expanded from its current 8 members to 12 or more, and if we could gain a modest increase in volunteering from the group of 50 volunteers, or add a few more volunteers. Perhaps members could add a volunteer session for every show in which they get a work accepted. Then invite your friends and colleagues to visit the club when you are there. Just a thought!

If you are now curious about joining the key circle, or just interested in becoming more knowledgeable about how to do certain things as a regular volunteer, the next time you volunteer ask your Key Circle partner to explain things more fully. Are you mystified by what to do if someone inquires about buying a work of art when no one is there to open the office? How to turn up the thermostat? How to buzz a visitor in? No one learns these things overnight, or just from reading a set of instructions. (However, there is a detailed lime-green Volunteer notebook in the hall outside the office that contains all sorts of useful information about the club.) For those who are considering stepping it up a notch to become a key circle member, consider that volunteering event your first “training session” to become a key circle person.

To get more information, please contact a Key Circle member at info@sketchclub.org



**GALLERY
OPEN**

Admission is Free



Gallery hours: Wednesday, Friday, Saturday, Sunday: 1 PM to 5 PM

October 2017

Member Activities

Monthly Meeting and Dinner

No Members Meeting Dinner This Month
Plan to attend the
Philadelphia Sketch Club's 157th Anniversary Gala

You can still order tickets at [Purchase Gala Tickets](#) or by calling 215-545-9298. Please order tickets promptly as we must provide a headcount to our caterer plus our capacity may be exceeded by the demand for tickets.



COME JOIN US

Save the Date
The Philadelphia Sketch Club's 157th Anniversary Gala
Saturday
October 21st, 2017
6 to 10 PM
Honoring Alan Fetterman, Al Gury, and Signe Wilkinson
Medal Presentation, Live Art Auction, Silent Auction, Cocktails, Buffet
for more information and to buy tickets visit
www.sketchclub.org
or call 215.545.9298

2017 GALA

2017 OCTOBER

ALAN FETTERMAN

AL GURY

THE PHILADELPHIA SKETCH CLUB

Gallery hours: Wednesday, Friday, Saturday, Sunday: 1 PM to 5 PM

October 2017

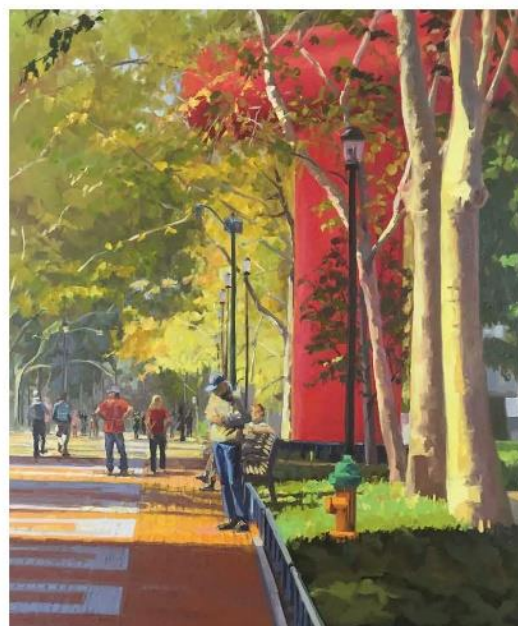
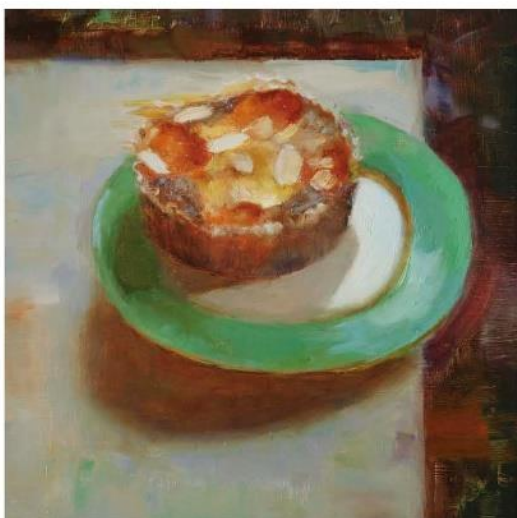
2017 Main Gallery Schedule

Now in the Main Gallery:

The 2017 Annual Members' Exhibition

September 29 – October 25, 2017

Opening Reception: Saturday, October 7, 2017; 11 AM to 6 PM



Art: (top left, clockwise) Maria Kurtzman, "Apricot Tart" 10x10" Oil/linen. Joe Sweeney, "Egret" 16x19" Oil/museum board. Patrick Connors, "Early Spring Morning, Twin Sycamores" 20x16" Oil/linen. Elaine Lisle, "On Locust" 36x24" Oil/canvas.

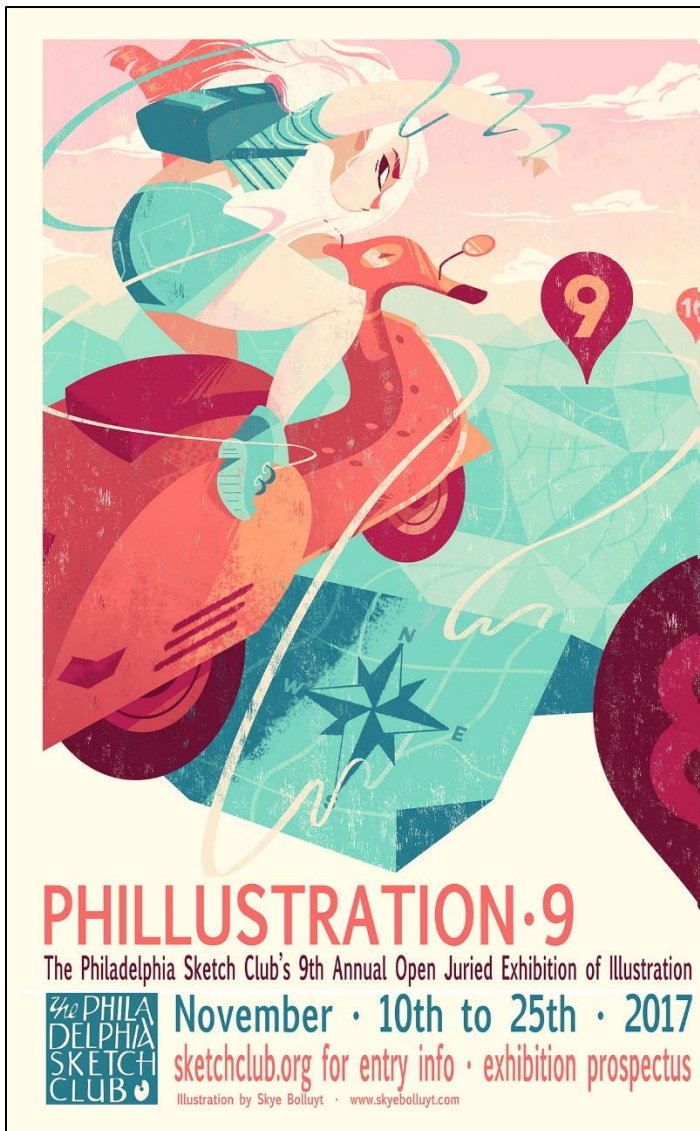
Gallery hours: Wednesday, Friday, Saturday, Sunday: 1 PM to 5 PM

October 2017

2017 Main Gallery Schedule

Coming in November

[Get the Prospectus](#)



Phillustration · 9 November 10 to 25th 2017 · Call for Entries

Phillustration is the PSC's open juried exhibition of illustration, and the only exhibition of its kind in the Northeast US outside of New York City. Past exhibitors have included noted illustrators Charles Santore, Boris Vallejo, Julie Bell, David Palumbo, David Weisner, James Bennett and New Yorker cover artist Bob Staake as well as talented illustrators from the Tri-State area and up and coming student illustrators.

Illustration by Skye Bolluyt

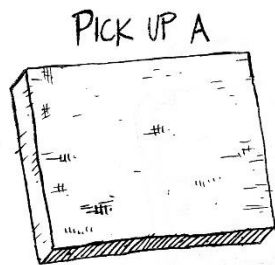
Gallery hours: Wednesday, Friday, Saturday, Sunday: 1 PM to 5 PM

October 2017

2017 Main Gallery Schedule

Coming in December:

The Annual Legacy Holiday Art Show and Sale December 2nd thru 17th



Christmas in August...?

Nope- The Annual Legacy Holiday Art Show and Sale is scheduled for December 2nd thru 17th, 2017, and it is not too early to think about creating a piece to help support the Sketch Club.

This year, Blick Artist Materials in Philadelphia have donated 41 9 x 12 stretched canvasses to the PSC. These canvasses are available on a first come, first serve basis for any PSC member who would like to use one to create a work for sale at the Legacy Art Show and Sale in December. A canvas can be picked up at the PSC on Wednesdays or Fridays from 11 AM to 5 PM, or arrangements can be made to pick one up by emailing Michelle Lockamy at executivedirector@sketchclub.org.

Members who take a canvas will be expected to have the finished work framed, wired, and ready to hang in the Legacy Show by November 26th, 2017. Digital images of work finished before November 1st 2017 should be sent to Kevin Meyers, the Exhibition Chair, for use in exhibition publicity and for display in the PSC online gallery. As per the tradition of the PSC Legacy Holiday Show and Sale, any other works provided by members for the exhibition will fall under the guidelines of the exhibition prospectus.

The Exhibition Prospectus will be on the PSC website soon, but the canvasses are available now!



Gallery hours: Wednesday, Friday, Saturday, Sunday: 1 PM to 5 PM

October 2017

2017 Stewart Gallery Schedule

Now in the Stewart Gallery:

Watch the PSC website at sketchclub.org for Information

Exhibition Schedule and Events Calendar Always Available at sketchclub.org

Don't forget, you can always see the schedule for the coming year on the PSC web-site. Go to the Calendars/Events menu and select Exhibition Schedule. Here's the link:

<http://sketchclub.org/exhibitions/>. And new for this year, we've added an Events Calendar under the Calendars/Events menu. This calendar will show a complete list of the dates for important activities and deadlines. See it here: <http://sketchclub.org/calendar/>



Gallery hours: Wednesday, Friday, Saturday, Sunday: 1 PM to 5 PM

October 2017

Sketch Club Open Workshop Schedule

All workshops are open to the public. There is no need to register before attending. You do NOT have to be a member of the Philadelphia Sketch Club to participate in the workshops. Our workshops are open to anyone who is interested in drawing, painting or printmaking. All skill levels are welcome. Fees: Model workshops: \$8/session members, \$9/session for non-PSC members; Printmaking workshop: \$10/session; All workshops \$6 for full-time students. Monitored by PSC members.

Life Model	Costumed Model	Printmaking
Mondays – Extended pose (multi-session): 6:30 PM-9:30PM Monitors: Robert Bohne, Vince Docktor, Dan Kuetemeyer Tuesdays – Extended pose: 12:00 PM to 3:00 PM Monitor: Jacqueline Barnett Wednesdays – Extended pose: 6:30 to 9:30 PM Monitor: Vince Docktor Saturdays – Extended pose: 9:30 AM to 12:30 PM Monitor: Vince Docktor	Thursdays Extended pose 12:00 PM to 3:00 PM Monitor: Bob Bohne.	Tuesdays 10:00 AM to 2:00 PM Monitor: Elizabeth H. MacDonald

Please Note: Those who use oil paints should bring their own container(s) to remove used solvents. Odorless solvents only.

Gallery hours: Wednesday, Friday, Saturday, Sunday: 1 PM to 5 PM

October 2017

Art Natters: Members News

PSC member, **Susan Barnes** received an Outstanding Achievement Ribbon Award in the LBI Foundation Member, Student, Faculty Exhibition for "Seining the Bay" O/L, 24 x 24 inches.

She also has two paintings accepted in the 41st Annual Juried Art Exhibit at Smithville Mansion Annex Gallery, Eastampton, NJ. Reception scheduled for Saturday, September 9th from 1 to pm. The show runs through October 29, 2017.



3

Seining the Bay

PSC member **Alice K. Chung** is exhibiting 3 paintings at The 431 Art Gallery as an Exhibition of MCGOPA members' Inaugural Exhibition

September 12 to November 15, 2017
431 West Valley Forge Road
Upper Merion Community Center
King of Prussia, PA



Alice Chung with "Hope"

Gallery hours: Wednesday, Friday, Saturday, Sunday: 1 PM to 5 PM

October 2017

Art Natters: Members News

Opening reception October 15th 10:00 am to 7:00 pm Works by PSC member **Bhavisha Patel**

At:

Art & The Ageless Gardens,
2503 Naudain Street, Philadelphia,
PA 19146.



Mansion Bridge III

From PSC member, **William Kosman**: I want to tell you about some of my experiences while painting in public in France, namely on what is called “la digue” (the best translation is “the boardwalk”) in the coastal town of Saint Aubin-sur-Mer in Normandy. I’ve been painting a lot in the coastal towns near here because the beaches are beautiful, the skies above them are breath-taking, and it’s fun trying to capture the people on the digues and on the beaches. To see more, go to:

www.williamkosman.blogspot.com

Here’s a link to William’s the video:

<https://youtu.be/EhMaR2ckd8U>



Gallery hours: Wednesday, Friday, Saturday, Sunday: 1 PM to 5 PM

October 2017

Art Natters: Members News

These are pictures from two assisted living centers where PSC member, **Diane Hark** Reaches out to conduct Watercolor classes. These People are so grateful and happy to participate and create something to hang in their rooms.

Diane supplies material And inspiration and help

To everyone. It is one of those sayings "YOU GET MORE THAN YOU GIVE"



Gallery hours: Wednesday, Friday, Saturday, Sunday: 1 PM to 5 PM

October 2017

Art Natters: Members News

A 4" square plein air oil painting "View of Lake Crawford Dam done by PSC member, **Don Gauger** at the PSC Paint Out August 12 at Paradise Falls. Look for another event in 2018!



View oke Crawford Dam

PSC member, **Doris Peltzman** has 3 oils on exhibit at the Medford Art Center until November 2017.



A Rose is a Rose

Doris also was part of the fundraiser at Wayne Art Center for victims of hurricane Harvey. Four of her paintings were donated to help in this vital cause. The center raised over \$15,000. Thanks to the artists who donated their work

Gallery hours: Wednesday, Friday, Saturday, Sunday: 1 PM to 5 PM

October 2017

PSC member, **Robert Beck** named Honored Artist at Phillips' Mill. The 88th annual Phillips' Mill Juried Art Exhibition Committee has selected artist Robert Beck as this year's Honored Artist. Beck's relationship with the Phillips' Mill Juried Art Exhibition is a long one, with his paintings having been accepted into the exhibition 17 times in the past 22 years. They have included landscape paintings, nocturnes, seascapes, interiors, paintings including animals, and a portrait.

"I have always submitted what I considered to be my best available painting to Phillips' Mill each year," Beck said. "Often that meant it wouldn't be in my own annual exhibition on opening weekend. The Phillips' Mill show is that important."

The Bucks County resident attended the Pennsylvania Academy of Fine Arts in Philadelphia and maintains a gallery of his work in Lambertville, N.J. Beck's paintings have been the subject of three in-depth museum exhibitions at: The James A. Michener Art Museum, the City of Trenton Museum at Ellarslie and the Maine Maritime Museum. His paintings have been included in a number of invitational exhibitions, and his work has been presented in 30 solo gallery exhibitions and accepted into more than 50 juried exhibitions.

Beck has received 29 significant painting awards, was a finalist for the Pew Fellowship in 2000, and in 2014 was awarded the PSC Medal for "Excellence and Contribution to the Arts" by the Philadelphia Sketch Club, the oldest arts club in America.

Beck is known for painting in series, multiple images addressing diverse aspects of the same subject. Although his subjects vary, the common thread is the description of his encounter, concentrating on events, occupations and environments. Beck is a teacher, a curator, a lecturer and a writer. He has hosted a radio interview program, and his column on art-related experiences has appeared monthly in ICON Magazine for more than a decade.

In conjunction with the 88th annual Phillips' Mill Art Exhibition, Beck will give a presentation about his paintings that have been accepted into the show over the years. The talk will take place Oct. 5 at the Gallery of Robert Beck in Lambertville, at 7 p.m. To make a reservation, email robert@robertbeck.net using Lecture in the subject line. Include the number in your party and a phone number.

The 88th Phillips' Mill Juried Art Exhibition will open Sept 23 and run through Oct. 29. The show is open daily from 1 to 5 p.m. Adults pay \$5, seniors pay \$4 and students pay \$2. The exhibition is held at the Historic Phillips' Mill, 2619 River Road, 1.5 miles north of New Hope. For information call, 215-862-0582 or visit phillipsmill.org.



The Pink Cadillac

Gallery hours: Wednesday, Friday, Saturday, Sunday: 1 PM to 5 PM

October 2017

Art Natters: Members News

PSC member, **Patrick Connors** curated the upcoming PAFA exhibition: "The Loaded Brush: The Oil Sketch and the Philadelphia School of Painting" that I curated. There are 29 wonderful oil sketches spanning 135 years, starting with Eakins's paintings and continuing through to the artwork of contemporary painters that I invite you to see.

The exhibit will begin on the 5th October and remain hanging until the 4th February 2018. If you would like, I would be pleased to give you or members of the PSC a tour. You would need to let me know so that I can schedule the tour. PAFA will offer a discounted entry fee that will include both museum buildings for the entire day.



Cecilia Beaux,
Seated Girl in a Long Black Dress

The Loaded Brush: The Oil Sketch and the Philadelphia School of Painting

School of Fine Arts Gallery & The Henry Luce American Sculpture Center, Samuel M.V. Hamilton Building

5 October 2017 – 4 February 2018 **The Loaded Brush: The Oil Sketch and the Philadelphia School of Painting** examines the importance of the oil sketch to Thomas Eakins's studio practice, his visual poetry, and his legacy. This exhibition encompasses two exhibition spaces, the Henry Luce American Sculpture Study Center and the School of Fine Arts Gallery. Twenty-nine oil sketches are on display by Philadelphia regional painters who were inspired by Eakins's oils and those who reacted against Eakins's aesthetic. A select but comprehensive range of rarely seen artwork from the 19th through to the 21st centuries, the exhibit features diverse talents and styles depicting a variety of subject matter. The artwork of Academy alumni and faculty includes: Susan Macdowell Eakins, Thomas Anshutz, Cecilia Beaux, Alice Barber Stephens, Violet Oakley, Arthur B. Carles, Faye Swengel Badura, Arthur DeCosta, Seymour Remenick, Ben Kamihira, Lou Sloan, Peter Lister, Elizabeth Osborne, Vincent Desiderio, Bill Scott, Stanley Bielen, Renée Foulks, Patrick Connors and Brian Boutwell.

Here is a link to the PAFA website with the upcoming exhibition information:

<https://www.pafa.org/exhibitions/loaded-brush-oil-sketch-and-philadelphia-school-painting>

Gallery hours: Wednesday, Friday, Saturday, Sunday: 1 PM to 5 PM

October 2017

Calls for Work and Notices



Portrait of Justin Reyes
by Christopher Hardgrove

Souls Shot: *Portraits of Victims of Gun Violence*

Art Exhibition: November 3-30, 2017

Opening Reception: Friday, November 3, 6:00-9:00pm

The Presbyterian Church of Chestnut Hill

8855 Germantown Avenue

The numbers of people whose lives have been shattered by gun violence are staggering. Telling just some of the stories of the lives lived by the victims of gun violence is the goal of **Souls Shot: *Portraits of Victims of Gun Violence***. For this important project artists were paired with families or friends of victims and the portraits created illuminate those precious lives to encourage the viewer to focus beyond the statistics and see the individuals and the poignant cost of gun violence.

The project, a joint venture of **Heeding God's Call to End Gun Violence** and the **Presbyterian Church of Chestnut Hill**, will culminate in a free exhibition November 3 -30, 2017 in Widener Hall at the Presbyterian Church of Chestnut Hill, 8855 Germantown Avenue, Philadelphia. A **Souls Shot** opening art reception will be held on Friday, November 3 from 6:00-9:00pm. A program, beginning at 7:30pm that evening, will include speakers State Senator Art Haywood, Bryan Miller Executive Director of Heeding God's Call, the Healing Presence Singers, a participating artist, and a family member of a victim of gun violence. **Souls Shot: *Portraits of Victims of Gun Violence*** will be on view throughout the month of November during church office hours, 10:00am – 4:00pm Monday through Friday, Wednesdays from 6:00pm – 8:00pm, and on Sundays from 12:00pm – 3:00pm. (Exhibition closed November 22, 23 and 24.) A color catalog of the **Souls Shot** portraits will be available for purchase. Proceeds from the sale of this catalog will go to **Heeding God's Call** (<https://heedinggodscall.org/content/philadelphia-pa>). For questions about the **Souls Shot: *Portraits of Victims of Gun Violence*** exhibition, please email pcchmusicandarts@gmail.com.

The **Souls Shot: *Portraits of Victims of Gun Violence*** exhibition will be part of the **Presbyterian Church of Chestnut Hill's** annual *Festival of Music and the Arts* November 3 -5. This is an entire weekend of art, drama and music dedicated to ending gun violence. For more details on the *Festival of Music and the Arts* please visit www.chestnuthillpres.org/music-arts/

Gallery hours: Wednesday, Friday, Saturday, Sunday: 1 PM to 5 PM

October 2017

Calls for Work and Notices

Or Hadash Staircase Gallery

Reconstructionist Congregation Or Hadash in Fort Washington, PA is housed in a historic building, formerly the summer mansion of well-known society families. We have adapted a formerly grand entrance staircase into what we call The Staircase Gallery.

The Staircase Gallery has been having 3 shows a year for over 14 years. We have had shows featuring a diverse group of painters, photographers, children's art, and illustrators. We have incorporated writings and travel logs into exhibits for multi-talented artists who work in multiple mediums.

We are always looking for local artists who would like to show their work. The application process is to simply let us know of your interest, sending us a link to a site where we can see your work. If the Gallery committee feels your work would work in our space, we will contact you to schedule a show. The school students pass through the gallery so we must consider what is appropriate viewing for them in our decision making process. Many artists make a list of prices available for sales. We provide assistance in the hanging of the show and let the artist know what supporting documents are typically displayed.

We are currently scheduling for the 2017 season and going forward. If you would like to have a show in our unique and charming gallery, please let us know at mikeoswald@comcast.net. We will start the process and let you know what the steps are if we go forward.

Academy House Exhibition Opportunity

The Academy House art committee is now looking for pieces to display in our lobby starting sometime in April 2017. If any of your artists at the Philadelphia Sketch Club are interested, ask them to stop into the lobby (which now can be accessed only through 251 S. 15th Street) and look at the spaces currently being used. (The two pieces on the lobby level are smaller than we would prefer; the piece on the landing is an appropriate size.) If they think they have work that would be suitable for us, ask them to send photos and dimensions and we will take them up for consideration. Pieces displayed can be for sale, though the condo asks 20% of the selling price. Photos can be emailed to this address or dropped off at the front desk with my name on the envelope.

Thanks,
Michael Goldman
academyhousearts@gmail.com
1425 Locust Street
Philadelphia, PA 19102

Gallery hours: Wednesday, Friday, Saturday, Sunday: 1 PM to 5 PM

October 2017

Member Classifieds

Sketch Club Member **Sylvia Castellanos** looking for someone who can help me in the area of social media marketing of my paintings. I have been doing portraits and figurative paintings for several decades. I have a web site (sylviacastellanos.com), a Facebook professional page, a LinkedIn page, a Pinterest page and a YouTube channel with five videos. I want to be able to improve them, and to use them to reach a larger audience.

I also want to be able to use Facebook ads strategically to sell specific paintings. I want someone to teach me how to do it. I prefer that it be someone who has some background in using these skills specifically in a fine art context as well as in other areas. As a separate matter, I am also looking for someone who can serve as my representative with regard to certain functions, such as being the person who contacts institutions on my behalf.

If you feel you can do this or can recommend someone, please contact me through the Sketch Club. First please go to my web site and familiarize yourself with what I do.

PSC member, **Joanne Hirsh** is pleased to tell you that the Philadelphia real estate market has been quite active since the arrival of spring. We have all kinds of properties for sale or rent from condos to houses in our many neighborhoods at all price points.

Should you need assistance or just general information, I would be happy to help you. You can reach me at: joanne.hirsh@foxroach.com or 610-310-7062.

Happy Spring,

Joanne Hirsh

Photography Services for Artists

Do you need high-quality digital images of your work? Is glare a problem? Color balance not quite right? I can help you get great images of your 2-D or 3-D work suitable for digital file output or output for presentation and hard-copy presentation. I offer flexible availability, willingness to travel, special pricing for Sketch Club members.

Contact PSC member **Ken Weiner** at info@sketchclub.org.

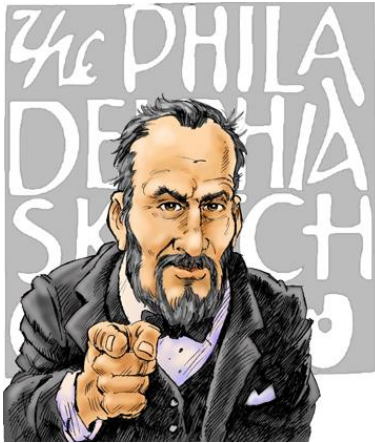
Seeking Framers

Sketch Club members frequently ask about framing services. If you wish to provide framing services to PSC members, please contact the PSC at info@sketchclub.org or call the PSC office: 215 545-92908

Gallery hours: Wednesday, Friday, Saturday, Sunday: 1 PM to 5 PM

October 2017

Call for Volunteers



We have important positions within the PSC that need volunteers to take over!
Contact Faad Ghorashi at to help your club with future events.

The Portfolio: The newsletter of the Philadelphia Sketch Club is published monthly. Editor: Ken Weiner; Technical support and Web Master: Ken Weiner

Send your member news, announcements and corrections to portfolio@sketchclub.org. The due date for all materials is one week before the end of the month.

Back issues of the Portfolio are available at: <http://sketchclub.org/portfolio-archive/>

The Philadelphia Sketch Club

235 S Camac Street
Philadelphia, PA 19107
(215) 545-9298
<http://sketchclub.org/>
executivedirector@sketchclub.org

Gallery Manager: Michelle Lockamy

Officers:

- President: Richard Harrington
- Vice President: Kenneth Weiner
- Secretary: Fran Carter
- Treasurer: William Patterson

Board of Directors

- Elise Anzini
- Jacqueline Barnett
- Vincent Docktor
- Stephen Iwanczuk
- William Kosman
- Kevin Myers
- Charles F. Tarr
- Joe Winter