

Gallery hours: Wednesday, Friday, Saturday, Sunday: 1 PM to 5 PM

November 2017

November 2017 • We Need Your Artwork!



Annual Holiday Art Show & Sale

December 9-17 at the Philadelphia Sketch Club

See details at sketchclub.org

Delivery: Saturday, November 25th
and Sunday, November 26th • 1-5 PM

Holiday Dinner Meeting & Sale:
Sunday, December 10th • 1-4 PM
(members only)

Reception & Auction:
Sunday, December 10th
(open to the public 4-5 PM)

the PHILA
DELPHIA
SKETCH
CLUB



This Month's Portfolio

The Sketch Club's 157th Anniversary Gala	2
Support the Sketch Club	3
Membership	6
Sketch Club Activities	7
Member Activities	9
2017 Main Gallery Schedule	10
2017 Stewart Gallery Schedule	12
Sketch Club Open Workshop Schedule	13
Art Natters: Members News	14
Calls for Work and Notices	20
Member Classifieds	24
Call for Volunteers	25

Send your member news, announcements and corrections to portfolio@sketchclub.org. The deadline for ALL submissions is 1-week before the end of the month.

Reminder: It's never too late. You can always renew your membership

You may pay online at <http://sketchclub.org/annual-dues-payment/>

or mail your check to:

The Philadelphia Sketch Club
235 S. Camac St.
Philadelphia, PA 19107

For questions please contact the Gallery Manager at 213335-545-9298 or email:

executivedirector@sketchclub.org

Late Breaking News – See items that were submitted after the publication date. Go to:

info@sketchclub.org

The PSC general email is: info@sketchclub

Gallery hours: Wednesday, Friday, Saturday, Sunday: 1 PM to 5 PM

November 2017

The Sketch Club's 157th Anniversary Gala

The Philadelphia Sketch Club's 157th Anniversary Gala Scrapbook



Thanks to all who
made the 157th
anniversary a great
success!

Gallery hours: Wednesday, Friday, Saturday, Sunday: 1 PM to 5 PM

November 2017

Support the Sketch Club

Contribute

Please consider making your tax-deductible contribution now. These funds will be put to good use providing enhanced services to our members and friends.

Membership dues cover only a small portion of the PSC's operating expenses. Competition for funding for arts organizations like the Sketch Club is increasingly competitive and total funding for the arts is shrinking. Your additional support will keep the PSC an active support for visual artists in the Metropolitan Philadelphia area. The Philadelphia Sketch Club is an IRS designated 501(c) (3) non-profit organization which allows your donations to be tax deductible.

You can call the office at 215-545-9298, mail checks to the Sketch Club or visit the Contribute page of our Website.

Visit our **Contribute** page of our website to give online at:

<http://sketchclub.org/support-us/>



Sketch Club Members receive a
25% discount at Merion Art.
Use promo code "PSC"
online at www.merionart.com

"Our staff of experienced artists, custom framers, and designers can answer your art materials questions and help to creatively solve all your artistic problems. Stop in our store for personalized friendly attention, or go to merionart.com for access to thousands of quality art products!"

Monday - Friday: 8:30am - 6:00pm
Saturday: 9:00am - 5:30pm
Sunday: 12:00pm - 5:00pm

Merion Art & Repro Center (610) 896-6161 - Phone
17 West Lancaster Avenue (610) 896-7781 - Fax
Ardmore, PA 19003

Gallery hours: Wednesday, Friday, Saturday, Sunday: 1 PM to 5 PM

November 2017

Support the Sketch Club

PHOTOLounge

The **PHOTOLounge** supports the Philadelphia Sketch Club and its members:

Sketch Club Members receive a 15% discount at PHOTOLounge.

Use online promo code "sketch".

The PHOTOLounge is located at 1909 Chestnut St. Philadelphia PA 19103.

For nearly 20 years, PHOTOLounge's focus has been the simple idea that pictures should be beautiful, affordable, and long lasting. We're a very adept photo lab with diverse services from iPhone printing to shoebox scanning. You can bring us film for processing, and also order prints online, or from the App. Come in and print your world.

Sketch Club Members receive a 15% discount at PHOTOLounge.

Use online promo code "sketch".

267-322-6651 – www.myphotolounge.com

Sketch Club members receive 20% discount




Framing Family Treasures for over 20 Years



We offer a variety of framing materials and techniques including:

- Archival / conservation treatment • Specialty mats (Linen, Suede, Silk)
- Stretching / Blocking of needleart and oils
- 1000's of moulding choices • 22 karat finished corner frames • Memorabilia framing
- Custom toning / coloring • Decorative mat cuts • French matting • Fillets
- Mirrors • Shadowboxing • Dry Mounting

www.CanalFrame.com • CanalFrame@comcast.net • 215-493-3660
1093 General Greene Road, Washington Crossing, PA 18977

Gallery hours: Wednesday, Friday, Saturday, Sunday: 1 PM to 5 PM

November 2017

Support the Sketch Club

Like, Link & Share

If you're not following the Philadelphia Sketch Club on Facebook re-tweeting Sketch Club tweets yet, it's time that you did. We have well over 2000 Facebook followers. Get the word out about the Sketch Club. Please click the like button and share your comments and invite your friends to like our page.

Follow @PhilaSketchClub on Twitter, we have almost 400 followers. Please click the heart button and re-tweet our announcements.

Include links on your website, blogs and social media to The Philadelphia Sketch Club to increase traction across social media platforms.

Follow us on Facebook, Twitter and Instagram now!

Thanks to Don Brewer and Michelle Lockamy for managing PSC social media sites.



Gallery hours: Wednesday, Friday, Saturday, Sunday: 1 PM to 5 PM

November 2017

Membership

Not a PSC Member?: Join Now!

If you're reading this edition of the Portfolio and you're not a member of the PSC, you should consider joining the more than 200 other Philadelphia area artists who have. The PSC is one of the most active visual art venues serving center city Philadelphia. The PSC is a hands-on organization that offers its members the opportunity to participate in all aspects of creating and presenting work to the public. It presents over 20 scheduled group and solo exhibitions annually and offers a wide range of daily workshops. [Get info and an application here.](#)

If you are a member of the PSC, please feel free to share the Portfolio with your artist friends and encourage them to become members.

Recent New PSC Members

The Sketch Club welcomes new members recently approved by the Board of Directors.

- Adel DiMedio
- Christopher Fowler
- Susie Maguire
- Eileen Miller
- Annie Stone
- Daniel Widolff

Current Sketch Club members can review new member applications at: <http://sketchclub.org/member-applications/>. The members only section and documents are password protected. If you've forgotten the password, please contact Ken Weiner at: membership@sketchclub.org.

Membership Renewal

You can check the status of your membership by going to the Current Members page on the PSC web-site: <http://sketchclub.org/sample-page/memberspace/>. All current members are listed. An asterisk (*) means that the membership has expired but is within the 60-day grace period for renewal. Names in red are active links to the individual's web site.

Renew Now! <http://sketchclub.org/annual-dues-payment/>

If you have any questions about your membership, please don't hesitate contact us at membership@sketchclub.org or call the office: 215-545-9298.

Gallery hours: Wednesday, Friday, Saturday, Sunday: 1 PM to 5 PM

November 2017

Sketch Club Activities

Critique Night – Next Meeting: November 15th, 2017

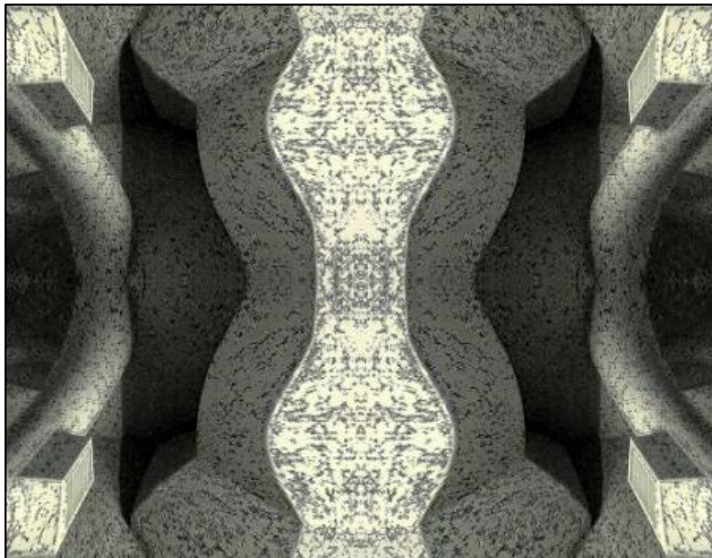
Open to PSC Members and Non-Members

RSVP to **Michelle Lockamy** at 215-545-9298 or
executivedirector@sketchclub.org

Critique Night is held in the Library of the Sketch Club every third Wednesday beginning at 7 PM. Bring work you've finished, work in progress, or just sketches for work you're planning! Photos, digital work, drawings, all mediums are welcome; we can project digital images on a screen for review, so you have the option to show work that may be too big or too heavy to transport to the Club. There is no one individual directing the critique, just your fellow artists and peers. Facilitated/monitored by **Rich Harrington**, PSC President



Photo Circle– Next Meeting: November 9th, 2017 from 6:30 to 8:30 PM



We will discuss new group activities and possibilities for expansion. The Photo Circle meets every 2nd Thursday at 6:30 PM. You can contact Steve anytime at si22@drexel.edu or 215-300-9192 (cell). **Steve Iwanczuk**, Photo Circle Monitor and Member of Philadelphia Sketch Club Board of Directors.

Gallery hours: Wednesday, Friday, Saturday, Sunday: 1 PM to 5 PM

November 2017

Sketch Club Activities

Key Circle Volunteers

Key Circle Volunteers: Alice Chung, Wayne Franks, Faad Ghoraishi, Donald Kuetemeyer, Katy Lin, Marilee Morris, Rosa Kim Paik, Lauren Sweeney, Gail Williams

The story behind the “Key Circle” volunteer group

There are many types of volunteer activities that are essential to maintaining the Sketch Club as a vibrant art club and showcase for outstanding art. For the last year a small group of member volunteers dubbed the “Key Circle” has been working to help the Club be reliably open during scheduled weekend gallery hours, as well as drop-off and pick-up sessions, jurying sessions, etc. – all the background work that goes into putting on each show.

We are dubbed the “Key Circle” because each of us has direct access to open the club. This also means that one of our 8-member group should be signed up for each session so the other volunteers can be assured of access. Equally importantly, Key Circle members quickly become more familiar with many aspects of Sketch Club functioning – and thus more comfortable handling all manner of situations.

This past year, over 50 total volunteers staffed the galleries on weekends, drop-off and pick-up events. Even though many volunteered just a few times during the year, those numbers added up to fully staffed shows for much of the year, at least until the busy fall season. It would make all the difference going forward if the Key Circle group could be expanded from its current 8 members to 12 or more, and if we could gain a modest increase in volunteering from the group of 50 volunteers, or add a few more volunteers. Perhaps members could add a volunteer session for every show in which they get a work accepted. Then invite your friends and colleagues to visit the club when you are there. Just a thought!

If you are now curious about joining the key circle, or just interested in becoming more knowledgeable about how to do certain things as a regular volunteer, the next time you volunteer ask your Key Circle partner to explain things more fully. Are you mystified by what to do if someone inquires about buying a work of art when no one is there to open the office? How to turn up the thermostat? How to buzz a visitor in? No one learns these things overnight, or just from reading a set of instructions. (However, there is a detailed lime-green Volunteer notebook in the hall outside the office that contains all sorts of useful information about the club.) For those who are considering stepping it up a notch to become a key circle member, consider that volunteering event your first “training session” to become a key circle person.

To get more information, please contact a Key Circle member at info@sketchclub.org



**GALLERY
OPEN**

Admission is Free



Gallery hours: Wednesday, Friday, Saturday, Sunday: 1 PM to 5 PM

November 2017

Member Activities

Dinner Meeting

Friday November 10th, 2017

Dinner and Presentation Open to the Public

Please RSVP to Michelle in the PSC office by 12 Noon

Wednesday November 8th, 2017

AGENDA

- 5:30- Social Period Begins
- 6:15- Speaker
- 7:15- Dinner

DINNER

- Members - \$16
- Guests - \$18

Guest Speaker: TBD

Check the PSC website at: sketchclub.org for updates



Gallery hours: Wednesday, Friday, Saturday, Sunday: 1 PM to 5 PM

November 2017

2017 Main Gallery Schedule

In the Upstairs Gallery



Phillustration 9 illustration by Skye Bolluyt

Phillustration 9 Opening Reception November 17th 2 to 4 PM

Phillustration 9, the open juried exhibition of contemporary illustration, will take place at the Philadelphia Sketch Club from November 10th through November 25th, 2017. Along with work by professional illustrators from the Tri-State area, the Ninth Annual Phillustration exhibition will feature original work by renowned children's book illustrator Charles Santore. Mr. Santore recently illustrated a special 150th anniversary collector's edition of the original Lewis Carroll manuscript, *Alice's Adventures Under Ground*, published by Cider Mill Press. He will be present at the exhibition's opening reception on November 17th at the Sketch Club to sign copies of this or any other of his many children's book you may bring.



Watercolor illustration by Charles Santore for *Alice's Adventures Under Ground*

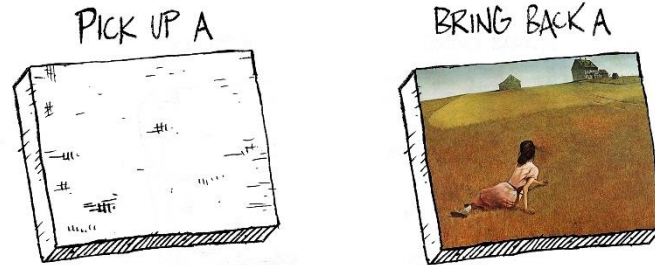
Gallery hours: Wednesday, Friday, Saturday, Sunday: 1 PM to 5 PM

November 2017

Coming in December:

The Annual Legacy Holiday Art Show and Sale December 2nd thru 17th

[Click here to get the prospectus](#)



Christmas in August...?

Nope- The Annual Legacy Holiday Art Show and Sale is scheduled for December 2nd thru 17th, 2017, and it is not too early to think about creating a piece to help support the Sketch Club.

This year, Blick Artist Materials in Philadelphia have donated 41 9 x 12 stretched canvasses to the PSC. These canvasses are available on a first come, first serve basis for any PSC member who would like to use one to create a work for sale at the Legacy Art Show and Sale in December. A canvas can be picked up at the PSC on Wednesdays or Fridays from 11 AM to 5 PM, or arrangements can be made to pick one up by emailing Michelle Lockamy at executivedirector@sketchclub.org.

Members who take a canvas will be expected to have the finished work framed, wired, and ready to hang in the Legacy Show by November 26th, 2017. Digital images of work finished before November 1st 2017 should be sent to Kevin Meyers, the Exhibition Chair, for use in exhibition publicity and for display in the PSC online gallery. As per the tradition of the PSC Legacy Holiday Show and Sale, any other works provided by members for the exhibition will fall under the guidelines of the exhibition prospectus.

The Exhibition Prospectus will be on the PSC website soon, but the canvasses are available now!





Gallery hours: Wednesday, Friday, Saturday, Sunday: 1 PM to 5 PM

November 2017

2017 Stewart Gallery Schedule

Now in the Stewart Gallery:

Watch the PSC website at sketchclub.org for Information

Exhibition Schedule and Events Calendar Always Available at sketchclub.org

Don't forget, you can always see the schedule for the coming year on the PSC web-site. Go to the Calendars/Events menu and select Exhibition Schedule. Here's the link:

<http://sketchclub.org/exhibitions/>. And new for this year, we've added an Events Calendar under the Calendars/Events menu. This calendar will show a complete list of the dates for important activities and deadlines. See it here: <http://sketchclub.org/calendar/>

Gallery hours: Wednesday, Friday, Saturday, Sunday: 1 PM to 5 PM

November 2017

Sketch Club Open Workshop Schedule

All workshops are open to the public. There is no need to register before attending. You do NOT have to be a member of the Philadelphia Sketch Club to participate in the workshops. Our workshops are open to anyone who is interested in drawing, painting or printmaking. All skill levels are welcome. Fees: Model workshops: \$8/session members, \$9/session for non-PSC members; Printmaking workshop: \$10/session; All workshops \$6 for full-time students. Monitored by PSC members.

Life Model	Costumed Model	Printmaking
<p>Mondays – Extended pose (multi-session): 6:30 PM-9:30PM</p> <p>Monitors: Robert Bohne, Vince Docktor, Dan Kuetemeyer</p> <p>Tuesdays – Extended pose: 12:00 PM to 3:00 PM Monitor: Jacqueline Barnett</p> <p>Wednesdays – Extended pose: 6:30 to 9:30 PM Monitor: Vince Docktor</p> <p>Saturdays – Extended pose: 9:30 AM to 12:30 PM Monitor: Vince Docktor</p>	<p>Thursdays</p> <p>Extended pose</p> <p>12:00 PM to 3:00 PM Monitor: Bob Bohne.</p>	<p>Tuesdays</p> <p>10:00 AM to 2:00 PM Monitor: Elizabeth H. MacDonald</p>
<p>Please Note: Those who use oil paints should bring their own container(s) to remove used solvents. Odorless solvents only.</p>		

Gallery hours: Wednesday, Friday, Saturday, Sunday: 1 PM to 5 PM

November 2017

Art Natters: Members News

PSC member **Alice K. Chung** is exhibiting 3 paintings at The 431 Art Gallery as an Exhibition of MCGOPA members' Inaugural Exhibition



Alice Chung with "Hope"

September 12 to November 15, 2017
431 West Valley Forge Road
Upper Merion Community Center
King of Prussia, PA

PSC member **Alice Chung's** painting accepted into Wayne Art Center, Davenport Gallery as a Fall Members' Juried Art Exhibition 2017. 95 pieces were accepted out of 200 competitive submissions juried by Scott Noel, PAFA Professor.

The show runs from Oct 15 to November 18, 2017



Alice Chung at Davenport Gallery in Wayne Art Center, Oct. 15, 2017

Gallery hours: Wednesday, Friday, Saturday, Sunday: 1 PM to 5 PM

November 2017

Art Natters: Members News

PSC member **Anne Kullaf** will teach 2 Workshops in Europe

In May 2018, PSC member Anne Kullaf will be offering workshops in Italy and France--one watercolor and the other oil. Both workshops are fully inclusive with lodging, meals, excursions and ALL MATERIALS provided. Anne is a professional artist and drawing and painting instructor who has taught watercolor and oils at some of the best museum schools in the region including the Princeton University Art Museum, the Visual Arts Center of New Jersey and the Salmagundi Club of NY.

Although the trips are not until May, now is the time to sign up as spots are filling quickly and advance planning is needed to order all of the supplies and materials that will be provided to you in the workshops. For more details, see the descriptions of each workshop below and click on the links for in depth information.

Watercolor Sketchbook - Tuscany

May 5 - 11, 2018

All supplies, meals and lodging included!

<https://artsandculturaltravel.com/portfolio/watercolor-sketching-on-location-in-italy-with-anne-kullaf/>



Join Anne on this fabulous trip to locations in Tuscany including Florence, Siena (our home base), and San Gimignano! Participating artists will paint each day after Anne does demos on perspective, color mixing and capturing the scene quickly with lots of movement and gesture. This trip is hosted by Arts & Cultural Travel and includes lodging, meals, excursions (there is even a gourmet regional cooking class one day), wine tastings and ALL MATERIALS. Trip limited to 10 participants, all levels, spouses/non painter friends welcome to accompany artists for a reduced fee--see the link above for pricing.

Plein Air Oil Painting - Dordogne, France

May 13 - 20, 2018

All supplies, meals and lodging included--even plein air easels!!!

<http://perigord-retreats.com/anne-kullaf-13-20-may-2018/>

Imagine a plein air oil painting trip to Europe where you don't have to carry any supplies on the plane! Perigord Retreats, hosts of this trip in France, have a fully equipped art studio that participating artists may use at any time during our stay--so even if the weather is bad, there is a studio to work in. When working in the field, plein air easels will be provided for use, so no lugging them through the airport on this trip.



The trip includes visits to the beautiful ancient towns of the Dordogne and Lot regions of France where artists will see rivers, caves and old stone buildings on narrow streets, houses built into the cliff side and much, much more. Be sure to check out the video on the main home page of Perigord Retreats, it shows the beauty of the location of Perigord Retreats--there is even a salt water pool house. Pricing options for this trip are available by emailing perigordandquercy@gmail.com, Angela Turner, Perigord Retreat's host will reply promptly with all the details.

Gallery hours: Wednesday, Friday, Saturday, Sunday: 1 PM to 5 PM

November 2017



"The Paint Along" Class at CCAA

Next Session November 2nd- Sign up
Now!

Our next session for the "Paint Along Class" begins Thursday, November 2, 2017 in the Near and Far Studios. The time is from 11 am to 2 pm. Follow me on my [website](#) to see class progress. See [Youtube](#) videos of class demos.



See a video of the instructor giving a demo.

**REGISTER with Chester County
Art Association** in West Chester, PA or **call to Register at 610-696-5600.**

To Register: <http://public.chestercountyarts.org/public/AdultClasses.faces>
For more information, go to: <https://alessicreations.com/>

Gallery hours: Wednesday, Friday, Saturday, Sunday: 1 PM to 5 PM

November 2017

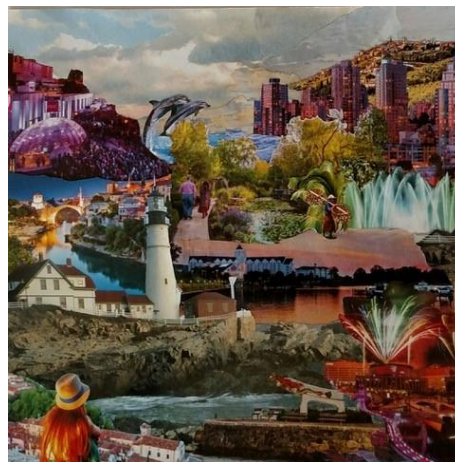
Art Natters: Members News

PSC member **Annie Stone** is exhibiting a collection of pieces at Gallery Sensei in the Lower East Side of NYC, December 13 to January 7, 2018.

The opening reception will be held:

- Thursday, December 14, 2017, 6pm to 9pm
- Free & open to the community
- Light refreshments will be served
- Gallery Sensei, 135 Eldridge St, New York, NY 10002

Annie's website is: <https://www.anniestonenaturecollage.com/>



Bella Vista II

From PSC member **Brenda Bechtel**: American Artist Professional League 89th Grand National, October 20 -



Sun Dappled Swimming Hole ~ Great Island

December 29, includes "Papyrus with Elephant Ears ~ Chanticleer" Oil on Linen. Awards announced at 2pm during the reception at First Presbyterian Church, 48 Fifth Avenue, NYC. After the Awards Reception, we shall walk across the street to the Salmagundi and stand in awe of the American Masters Exhibition! My Paintings are including in several juried, national exhibitions currently, and are listed on the shows page on my website www.BrendaLBechtel.com

Sad to learn of the passing of Curtis Hanson, newly Elected at the Boston Guild of Artists. I continue to be Inspired by His Vision. Perhaps we all should make note in our daily Artist Journal how very short our physical sojourn ... each moment, a Gift.



Ladybug Picnic - Chanticleer

Gallery hours: Wednesday, Friday, Saturday, Sunday: 1 PM to 5 PM

November 2017

Art Natters: Members News

PSC member **Doris Peltzman** has her work exhibited in 2 juried exhibitions: Wayne Art Center Members Exhibition in Wayne, P.A. and Artists Equity Tri State exhibit at the Wallingford Art Center in Wallingford P.A.



PSC member **Marie Wolfington Jones** will be participating in the 19th annual Miniature Show at Sunset Hill Gallery - 23 N. High Street in West Chester, PA. The show runs from Nov. 3 through the third week of December with the reception on Friday, Nov. 3 from 4-8 pm. Marie's miniature paintings combine watercolor and acrylic resin for a look somewhat similar to ceramic tile. This one titled, "Apple of the Day" was photographed pre-resin.



Apple of the Day

Many of the paintings are from her ongoing "painting a day" series and are posted online daily via Facebook and Instagram (@mariejones240).

Gallery hours: Wednesday, Friday, Saturday, Sunday: 1 PM to 5 PM

November 2017

Art Natters: Members News

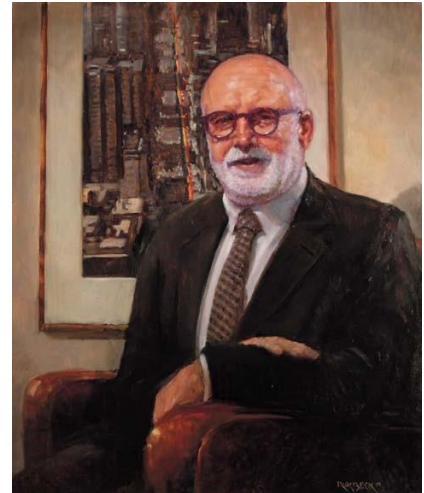
PSC member **Robert Beck** Presents Portrait at Penn

Robert Beck presented his portrait of Dr. Robert Schoenberg at the University of Pennsylvania on October 14. Dr. Schoenberg, Founder of the Penn LGBT Center, was retiring after 35 years at Penn. The ceremony included tributes by Philadelphia Mayor Kenney, University of Pennsylvania President Amy Gutmann, as



Robert Beck and Dr. Robert Schoenberg

well as words by Mr. Beck. The portrait will hang in the newly-named Dr. Robert Schoenberg Carriage House on the Penn campus.



Dr. Robert Schoenberg



Silver Linings

PSC member **Susan Barnes** received the Second Place Award for her plein air oil "Silver Linings" in the Willingboro Art Alliance 22nd Annual Open Juried Art Exhibition held in the Dr. David Flinker Gallery at Virtua Memorial Hospital, Mount Holly, NJ. The show runs through November 30, 2017.

Gallery hours: Wednesday, Friday, Saturday, Sunday: 1 PM to 5 PM

November 2017

Calls for Work and Notices



Portrait of Justin Reyes
by Christopher Hardgrove

Souls Shot: *Portraits of Victims of Gun Violence*

Art Exhibition: November 3-30, 2017

Opening Reception: Friday, November 3, 6:00-9:00pm

The Presbyterian Church of Chestnut Hill

8855 Germantown Avenue

The numbers of people whose lives have been shattered by gun violence are staggering. Telling just some of the stories of the lives lived by the victims of gun violence is the goal of **Souls Shot: *Portraits of Victims of Gun Violence***. For this important project artists were paired with families or friends of victims and the portraits created illuminate those precious lives to encourage the viewer to focus beyond the statistics and see the individuals and the poignant cost of gun violence.

The project, a joint venture of **Heeding God's Call to End Gun Violence** and the **Presbyterian Church of Chestnut Hill**, will culminate in a free exhibition November 3 -30, 2017 in Widener Hall at the Presbyterian Church of Chestnut Hill, 8855 Germantown Avenue, Philadelphia. A **Souls Shot** opening art reception will be held on Friday, November 3 from 6:00-9:00pm. A program, beginning at 7:30pm that evening, will include speakers State Senator Art Haywood, Bryan Miller Executive Director of Heeding God's Call, the Healing Presence Singers, a participating artist, and a family member of a victim of gun violence. **Souls Shot: *Portraits of Victims of Gun Violence*** will be on view throughout the month of November during church office hours, 10:00am – 4:00pm Monday through Friday, Wednesdays from 6:00pm – 8:00pm, and on Sundays from 12:00pm – 3:00pm. (Exhibition closed November 22, 23 and 24.) A color catalog of the **Souls Shot** portraits will be available for purchase. Proceeds from the sale of this catalog will go to **Heeding God's Call** (<https://heedinggodscall.org/content/philadelphia-pa>). For questions about the **Souls Shot: *Portraits of Victims of Gun Violence*** exhibition, please email pcchmusicandarts@gmail.com.

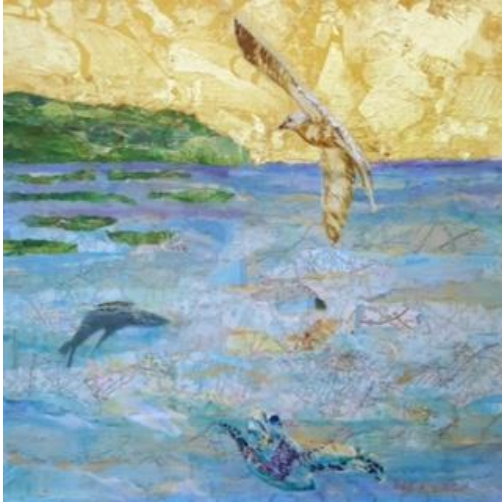
The **Souls Shot: *Portraits of Victims of Gun Violence*** exhibition will be part of the **Presbyterian Church of Chestnut Hill's** annual *Festival of Music and the Arts* November 3 -5. This is an entire weekend of art, drama and music dedicated to ending gun violence. For more details on the *Festival of Music and the Arts* please visit www.chestnuthillpres.org/music-arts/

Gallery hours: Wednesday, Friday, Saturday, Sunday: 1 PM to 5 PM

November 2017

Calls for Work and Notices

Deb K Simon (studio #5) is participating in the 25th Anniversary of The Mill Open Studios at:



- 123 Leverington St, Manayunk Phila.
- Free parking. 5x7" original art with proceeds to Northlight Community Center on Upper Lobby off Baker Street.

mdebksimon@gmail.com

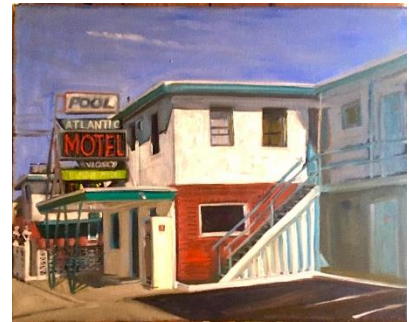
www.debksimon.com

The Mill Studios #5, 123 Leverington St.
www.ARTsisters.org

From **Eric Fowler**: These are all oils on canvas painted this summer. The subject matter is the quirky Jersey Shore vernacular architecture. These works show how site specific each little building or abode can have real character and seem to have a story to tell.



Works measure 16 x 20" and are for sale, as well.



Gallery hours: Wednesday, Friday, Saturday, Sunday: 1 PM to 5 PM

November 2017

Calls for Work and Notices

Come join my QiGong classes with Iris Kitagawa- Rainey

(Inquiries)dolly.gram@me.com

This 5000 year old Chinese practice moves energy (qi)through the 14 major meridians in the body freeing us of toxins and stagnant energy - We practice QiGong to keep ourselves healthy by deep breathing and slow movements.The practice starts with a series of self massage to move the energy and then we move onto a series of standing movements.

The classes are given at:

The Healing Arts Collective on Sunday's
519 So 9th Street
seniors are \$8.00 others \$15.00. 2:00 to 3:00 PM.

Other classes are held at:
The Lutheran Church of Holly Communion at
2110 Sansom Streets
Tuesday's from 2:45 to 3:45- seniors \$5.00 others \$10.00.

Hope to see you., Iris Kitagawa-

Gallery hours: Wednesday, Friday, Saturday, Sunday: 1 PM to 5 PM

November 2017

Calls for Work and Notices

Or Hadash Staircase Gallery

Reconstructionist Congregation Or Hadash in Fort Washington, PA is housed in a historic building, formerly the summer mansion of well-known society families. We have adapted a formerly grand entrance staircase into what we call The Staircase Gallery.

The Staircase Gallery has been having 3 shows a year for over 14 years. We have had shows featuring a diverse group of painters, photographers, children's art, and illustrators. We have incorporated writings and travel logs into exhibits for multi-talented artists who work in multiple mediums.

We are always looking for local artists who would like to show their work. The application process is to simply let us know of your interest, sending us a link to a site where we can see your work. If the Gallery committee feels your work would work in our space, we will contact you to schedule a show. The school students pass through the gallery so we must consider what is appropriate viewing for them in our decision making process. Many artists make a list of prices available for sales. We provide assistance in the hanging of the show and let the artist know what supporting documents are typically displayed.

We are currently scheduling for the 2017 season and going forward. If you would like to have a show in our unique and charming gallery, please let us know at mikeoswald@comcast.net. We will start the process and let you know what the steps are if we go forward.

Academy House Exhibition Opportunity

The Academy House art committee is now looking for pieces to display in our lobby starting sometime in April 2017. If any of your artists at the Philadelphia Sketch Club are interested, ask them to stop into the lobby (which now can be accessed only through 251 S. 15th Street) and look at the spaces currently being used. (The two pieces on the lobby level are smaller than we would prefer; the piece on the landing is an appropriate size.) If they think they have work that would be suitable for us, ask them to send photos and dimensions and we will take them up for consideration. Pieces displayed can be for sale, though the condo asks 20% of the selling price. Photos can be emailed to this address or dropped off at the front desk with my name on the envelope.

Thanks,
Michael Goldman
academyhousearts@gmail.com
1425 Locust Street
Philadelphia, PA 19102

Gallery hours: Wednesday, Friday, Saturday, Sunday: 1 PM to 5 PM

November 2017

Member Classifieds

Sketch Club Member **Sylvia Castellanos** looking for someone who can help me in the area of social media marketing of my paintings. I have been doing portraits and figurative paintings for several decades. I have a web site (sylviacastellanos.com), a Facebook professional page, a LinkedIn page, a Pinterest page and a YouTube channel with five videos. I want to be able to improve them, and to use them to reach a larger audience.

I also want to be able to use Facebook ads strategically to sell specific paintings. I want someone to teach me how to do it. I prefer that it be someone who has some background in using these skills specifically in a fine art context as well as in other areas. As a separate matter, I am also looking for someone who can serve as my representative with regard to certain functions, such as being the person who contacts institutions on my behalf.

If you feel you can do this or can recommend someone, please contact me through the Sketch Club. First please go to my web site and familiarize yourself with what I do.

PSC member, **Joanne Hirsh** is pleased to tell you that the Philadelphia real estate market has been quite active since the arrival of spring. We have all kinds of properties for sale or rent from condos to houses in our many neighborhoods at all price points.

Should you need assistance or just general information, I would be happy to help you. You can reach me at: joanne.hirsh@foxroach.com or 610-310-7062.

Happy Spring,

Joanne Hirsh

Photography Services for Artists

Do you need high-quality digital images of your work? Is glare a problem? Color balance not quite right? I can help you get great images of your 2-D or 3-D work suitable for digital file output or output for presentation and hard-copy presentation. I offer flexible availability, willingness to travel, special pricing for Sketch Club members.

Contact PSC member **Ken Weiner** at info@sketchclub.org.

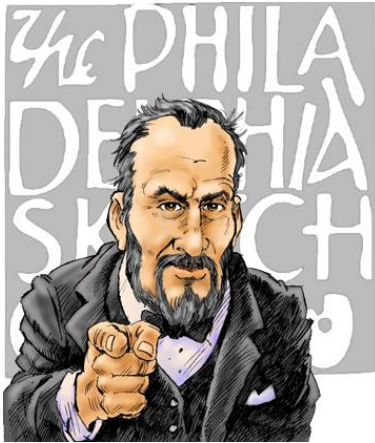
Seeking Framers

Sketch Club members frequently ask about framing services. If you wish to provide framing services to PSC members, please contact the PSC at info@sketchclub.org or call the PSC office: 215 545-92908

Gallery hours: Wednesday, Friday, Saturday, Sunday: 1 PM to 5 PM

November 2017

Call for Volunteers



We have important positions within the PSC that need volunteers to take over!
Contact Faad Ghoraishi at to help your club with future events.

The Portfolio: The newsletter of the Philadelphia Sketch Club is published monthly. Editor: Ken Weiner; Technical support and Web Master: Ken Weiner

Send your member news, announcements and corrections to portfolio@sketchclub.org. The due date for all materials is one week before the end of the month.

Back issues of the Portfolio are available at: <http://sketchclub.org/portfolio-archive/>

The Philadelphia Sketch Club

235 S Camac Street
Philadelphia, PA 19107
(215) 545-9298
<http://sketchclub.org/>
executivedirector@sketchclub.org

Gallery Manager: Michelle Lockamy

Officers:

- President: Richard Harrington
- Vice President: Kenneth Weiner
- Secretary: Fran Carter
- Treasurer: William Patterson

Board of Directors

- Elise Anzini
- Jacqueline Barnett
- Vincent Docktor
- Stephen Iwanczuk
- William Kosman
- Kevin Myers
- Charles F. Tarr
- Joe Winter