

Gallery hours: Wednesday, Friday, Saturday, Sunday: 1 PM to 5 PM

December 2017



Michele Lockamy

This Month's Portfolio

2017 Main Gallery Schedule	2
Sketch Club Activities	4
2017 Stewart Gallery Schedule	7
Art Natters: Members News	8
Sketch Club Open Workshop Schedule	11
American Art Today – New York World Fair 1939	12
Membership	14
Volunteer	15
Support the Sketch Club	16
Member Classifieds	18

Send your member news, announcements and corrections to portfolio@sketchclub.org. The deadline for ALL submissions is 1-week before the end of the month.

Reminder: It's never too late. You can always renew your membership
You may pay online at <http://sketchclub.org/annual-dues-payment/>
or mail your check to:
The Philadelphia Sketch Club
235 S. Camac St.
Philadelphia, PA 19107
For questions please contact the Gallery Manager at 213335-545-9298 or email: executivedirector@sketchclub.org
Late Breaking News – See items that were submitted after the publication date. Go to: info@sketchclub.org
The PSC general email is: info@sketchclub.org

Gallery hours: Wednesday, Friday, Saturday, Sunday: 1 PM to 5 PM

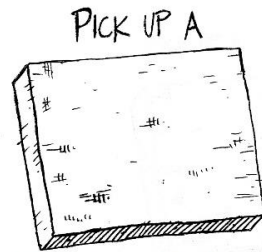
December 2017

2017 Main Gallery Schedule

You can always see important dates for all PSC activities at:

<http://sketchclub.org/webcalendar/month.php>

The Annual Legacy Holiday Art Show and Sale December 2nd thru 17th



Christmas in August...?

Nope- The Annual Legacy Holiday Art Show and Sale is scheduled for December 2nd thru 17th, 2017, and it is not too early to think about creating a piece to help support the Sketch Club.

This year, Blick Artist Materials in Philadelphia have donated 41 9 x 12 stretched canvasses to the PSC. These canvasses are available on a first come, first serve basis for any PSC member who would like to use one to create a work for sale at the Legacy Art Show and Sale in December. A canvas can be picked up at the PSC on Wednesdays or Fridays from 11 AM to 5 PM, or arrangements can be made to pick one up by emailing Michelle Lockamy at executivedirector@sketchclub.org.

Members who take a canvas will be expected to have the finished work framed, wired, and ready to hang in the Legacy Show by November 26th, 2017. Digital images of work finished before November 1st 2017 should be sent to Kevin Meyers, the Exhibition Chair, for use in exhibition publicity and for display in the PSC online gallery. As per the tradition of the PSC Legacy Holiday Show and Sale, any other works provided by members for the exhibition will fall under the guidelines of the exhibition prospectus.

The Exhibition Prospectus will be on the PSC website soon, but the canvasses are available now!



Gallery hours: Wednesday, Friday, Saturday, Sunday: 1 PM to 5 PM

December 2017

2017 Main Gallery Schedule

Coming in 2018

Please join us for our next open juried show:

The 2018 PSC Annual Domenic DiStefano Memorial Works on Paper Juried Exhibition

January 6-27, 2018

PSC's annual open juried show of works on paper

Deadline to enter online is **Midnight December 17, 2018**



[Enter Here](#)

[See Prospectus Here](#)

2017 First Place Winner, Mateus Costa, Cristiana, Graphite

Gallery hours: Wednesday, Friday, Saturday, Sunday: 1 PM to 5 PM

December 2017

Sketch Club Activities

Critique Night – Next Meeting: December 20th, 2017

Open to PSC Members and Non-Members

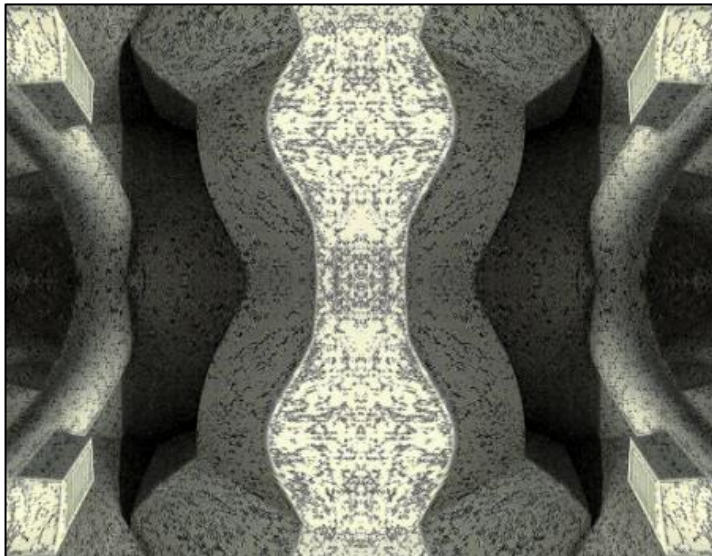
RSVP to **Michelle Lockamy** at 215-545-9298 or
executivedirector@sketchclub.org

Critique Night is held in the Library of the Sketch Club every third Wednesday beginning at 7 PM. Bring work you've finished, work in progress, or just sketches for work you're planning! Photos, digital work, drawings, all mediums are welcome; we can project digital images on a screen for review, so you have the option to show work that may be too big or too heavy to transport to the Club. There is no one individual directing the critique, just your fellow artists and peers. Facilitated/monitored by **Rich Harrington**, PSC President



Did you know? Thomas Eakins led the life classes at the Philadelphia Sketch Club in 1874 and 1875 and used that experience to get his position as an instructor at the Pennsylvania Academy of the Fine Arts.

Photo Circle– Next Meeting: December 14th, 2017 from 6:30 to 8:30 PM



We will discuss new group activities and possibilities for expansion. The Photo Circle meets every 2nd Thursday at 6:30 PM. You can contact Steve anytime at si22@drexel.edu or 215-300-9192 (cell). **Steve Iwanczuk**, Photo Circle Monitor and Member of Philadelphia Sketch Club Board of Directors.

Gallery hours: Wednesday, Friday, Saturday, Sunday: 1 PM to 5 PM

December 2017

Sketch Club Activities

Key Circle Volunteers – If you live in center city Philadelphia you can help with this important volunteer function.

Key Circle Volunteers: Alice Chung, Wayne Franks, Faad Ghoraishi, Donald Kuetemeyer, Katy Lin, Marilee Morris, Rosa Kim Paik, Lauren Sweeney, Gail Williams

The story behind the “Key Circle” volunteer group

There are many types of volunteer activities that are essential to maintaining the Sketch Club as a vibrant art club and showcase for outstanding art. For the last year a small group of member volunteers dubbed the “Key Circle” has been working to help the Club be reliably open during scheduled weekend gallery hours, as well as drop-off and pick-up sessions, jurying sessions, etc. – all the background work that goes into putting on each show.

We are dubbed the “Key Circle” because each of us has direct access to open the club. This also means that one of our 8-member group should be signed up for each session so the other volunteers can be assured of access. Equally importantly, Key Circle members quickly become more familiar with many aspects of Sketch Club functioning – and thus more comfortable handling all manner of situations.

This past year, over 50 total volunteers staffed the galleries on weekends, drop-off and pick-up events. Even though many volunteered just a few times during the year, those numbers added up to fully staffed shows for much of the year, at least until the busy fall season. It would make all the difference going forward if the Key Circle group could be expanded from its current 8 members to 12 or more, and if we could gain a modest increase in volunteering from the group of 50 volunteers, or add a few more volunteers. Perhaps members could add a volunteer session for every show in which they get a work accepted. Then invite your friends and colleagues to visit the club when you are there. Just a thought!

If you are now curious about joining the key circle, or just interested in becoming more knowledgeable about how to do certain things as a regular volunteer, the next time you volunteer ask your Key Circle partner to explain things more fully. Are you mystified by what to do if someone inquires about buying a work of art when no one is there to open the office? How to turn up the thermostat? How to buzz a visitor in? No one learns these things overnight, or just from reading a set of instructions. (However, there is a detailed lime-green Volunteer notebook in the hall outside the office that contains all sorts of useful information about the club.) For those who are considering stepping it up a notch to become a key circle member, consider that volunteering event your first “training session” to become a key circle person.

To get more information, please contact a Key Circle member at info@sketchclub.org



**GALLERY
OPEN**

Admission is Free



Gallery hours: Wednesday, Friday, Saturday, Sunday: 1 PM to 5 PM

December 2017

Sketch Club Activities

The Sketch Club's 2017 Holiday Party



The Philadelphia Sketch Club's Annual Holiday Party

Sunday December 10th, 2017 • 1 to 4 PM

\$25 per person includes a great selection of
hot hors d'oeuvres and open bar

Holiday Party Open
to PSC Members
and their guests

Stewart
Room Exhibition
Lottery at 3 PM



Music

Annual Purity
League Auction
and Legacy Show
Auction at 4 PM!

215.545.9298
for reservations

Check the PSC website at: sketchclub.org for updates



Gallery hours: Wednesday, Friday, Saturday, Sunday: 1 PM to 5 PM

December 2017

2017 Stewart Gallery Schedule

Now in the Stewart Gallery:

Watch the PSC website at sketchclub.org for Information

You can always see important dates for all PSC activities at:

<http://sketchclub.org/webcalendar/month.php>

Did you know? In 1895 when the call of “Fire” and smoke permeated the air in the Club’s rented quarters due to a smoking trash bin in the basement, Yarnall Abbott led a chivalrous group of members who helped quickly dress the life class model so she would not be embarrassed when the building was emptied into the street.

Gallery hours: Wednesday, Friday, Saturday, Sunday: 1 PM to 5 PM

December 2017

Art Natters: Members News

PSC member **Alice Chung** has an MCGOPA Exhibition (title of Seeing Double) at The 431 Art Gallery
Nov 17, 2017 through Jan 17, 2018 431 West Valley Forge Rd, King of Prussia, PA

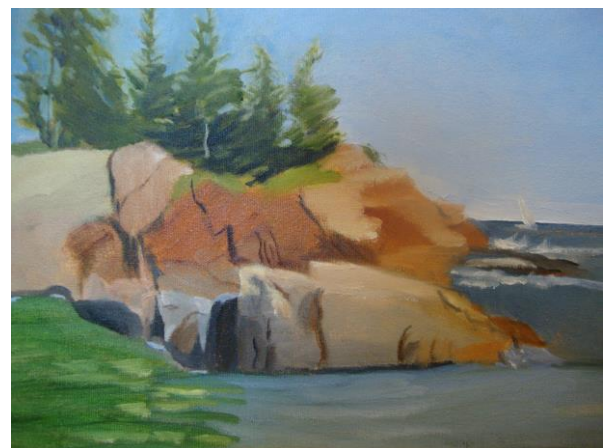


PSC member **Claire Lynch's** Plein Air painting of "Acadia Vista" was accepted in 2017 Fall Members Juried Exhibition.

Also 2017 Schuylkill River Art Heritage accepted "Fall Folic"



Fall Folic



Acadia Vista

Gallery hours: Wednesday, Friday, Saturday, Sunday: 1 PM to 5 PM

December 2017

Art Natters: Members News

PSC member **Susan Barnes** is a part of Four Artists Exhibition at the Medford Leas of Lumberton Community Center, 180 Woodside Drive, Lumberton, NJ 08048. Open to the public from 1 to 4pm on Tuesdays and Thursdays. The show runs through January 31, 2018.

She also has four oil paintings in the Small works show at the Medford Art Center, 18 N. Main St., Medford, NJ 08055. Reception is Friday, December 8th from 6 to 9pm which coincides with the Artwalk in Medford when several art venues are opened along Main Street.

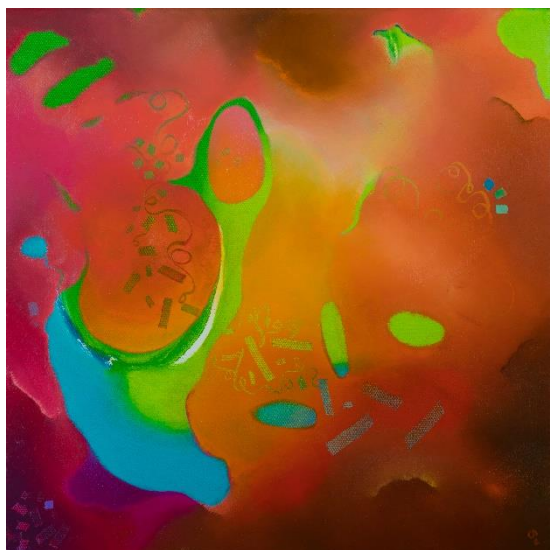
The gift shop is now opened in the Medford Art Center from 1 to 5 each Friday, Saturday and Sunday which feature some of her monotypes as well as her 2018 calendars with each month showing a different painting.

In addition, two paintings were accepted into the 6 x 6 Show & Sale at the Randy Higbee Gallery in Costa Mesa, California. The show can be viewed, and purchases can be made online at

<http://www.dailybrushwork.com/grid2.aspx?OJSID=14873&OID=13&GSID=4117>



PSC member **Su Knoll Horthy** will be exhibiting at Hardcastle Gallery in Centreville, DE, in their upcoming 2017 Annual Holiday Art Show. The Opening Night Reception will be on Friday, December 1, 5:30 to 8:30pm.



The exhibit will run November 24th through January 8, 2018. www.hardcastlegallery.com for more information."

Gallery hours: Wednesday, Friday, Saturday, Sunday: 1 PM to 5 PM

December 2017

Art Natters: Members News

PSC member **Annie Stone** is debuting her latest collage series, “Bella Vista,” at Gallery Sensei in the Lower East Side of NYC, December 13 to January 7, 2018.

The opening reception will be held:

- Thursday, December 14, 2017, 6pm to 9pm
- Free & open to the community
- Light refreshments will be served
- Gallery Sensei, 135 Eldridge St, New York, NY 10002

Annie’s website is:

<https://www.anniestonenaturecollage.com/>



Gallery hours: Wednesday, Friday, Saturday, Sunday: 1 PM to 5 PM

December 2017

Sketch Club Open Workshop Schedule

All workshops are open to the public. There is no need to register before attending. You do NOT have to be a member of the Philadelphia Sketch Club to participate in the workshops. Our workshops are open to anyone who is interested in drawing, painting or printmaking. All skill levels are welcome. Fees: Model workshops: \$8/session members, \$9/session for non-PSC members; Printmaking workshop: \$10/session; All workshops \$6 for full-time students. Monitored by PSC members.

Life Model	Costumed Model	Printmaking
<p>Mondays – Extended pose (multi-session): 6:30 PM-9:30PM</p> <p>Monitors: Robert Bohne, Vince Docktor, Dan Kuetemeyer</p> <p>Tuesdays – Extended pose: 12:00 PM to 3:00 PM Monitor: Jacqueline Barnett</p> <p>Wednesdays – Extended pose: 6:30 to 9:30 PM Monitor: Vince Docktor</p> <p>Saturdays – Extended pose: 9:30 AM to 12:30 PM Monitor: Vince Docktor</p>	<p>Thursdays</p> <p>Extended pose</p> <p>12:00 PM to 3:00 PM Monitor: Bob Bohne.</p>	<p>Tuesdays</p> <p>10:00 AM to 2:00 PM Monitor: Elizabeth H. MacDonald</p>

Please Note: Those who use oil paints should bring their own container(s) to remove used solvents. Odorless solvents only.

Did you know? Thomas Anshutz told members in the mid-1890s that if they brought in a canvas 22" x 16" he would paint their portraits and hang them up at the Club. Forty-three members did so and the portrait of the Club's first President, George F. Bensell who died in 1879, was painted from a photograph. These portraits now hang in the Club's library.

Gallery hours: Wednesday, Friday, Saturday, Sunday: 1 PM to 5 PM

December 2017

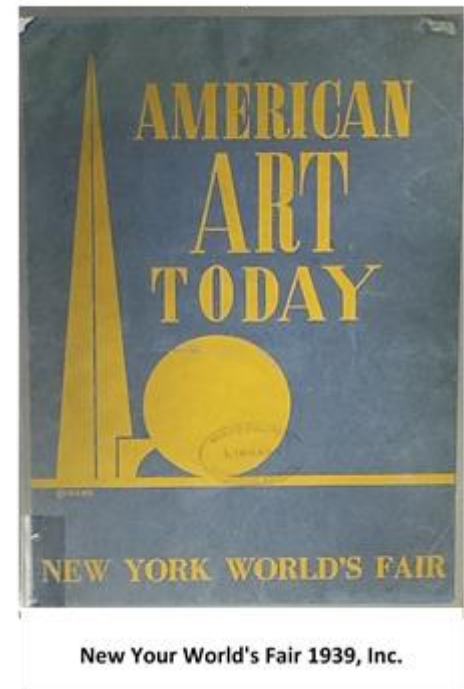
American Art Today – New York World Fair 1939

New York World's Fair 1939

While knocking around another art organization Rich Harrington found they were deaccessioning some books from their library and he found one that he thought would have a perfect home in the Philadelphia Sketch Club's library. The book was titled *American Art Today New York World's Fair*. The book was published in 1939 and contains images of approximately 1,122 artworks to include paintings (524), sculpture (256) and graphic arts (342). An image of the book and a couple of artworks from the book are shown below.

The exhibition was intended to present the best in contemporary American art in 1939. It is surprising how many Sketch Club Members had images of artworks represented in the book. A listing of the artists from Pennsylvania are presented

Published by:



Edward W. Redfield, The Village, Oil



Benton Spruance, Figure with Still Life,
Lithograph

Gallery hours: Wednesday, Friday, Saturday, Sunday: 1 PM to 5 PM

December 2017

American Art Today – New York World Fair 1939

Artists represented from Pennsylvania:

Sketch Club Members designated by *

Paintings

Arthur Carles
Clarence Holbrook Carter
Rachel H. Cartledge
Page Cary
Ralston Crawford*
Daniel Garber*
Robert Gwathmey
Joe Hirsch
Leon Karp
Leon Kelly
Antonio P. Martino*
L. A. D. Montgomery
Henry McCarter
Hobson Pittman
Henry Rankin Poore*
Edward W. Redfield*
Samuel Rosenberg
Francis Speight
Walter Stuempfig, Jr.
Carroll Tyson
Franklin Watkins
Jean Watson

Sculpture

Ramon Bermudez
Isidor Binswanger
Wharton Esherick
Beatrice Fenton
Harriet W. Frishmuth
J. Wallace Kelly
Bertha Kling
Yoshimatsu Onaga
Fingal Rosenquist
Harry Rosin

Graphic Arts

Albert W. Barker
Morris Blackburn
Arthur Bloch, Jr.
Julius Bloch
Hortense Ferne
Michael J. Gallagher
Albert Gould
Richard Hood*
Earl Horter*
Petr Hurd
Cynthia Iliff
Hubert Mesibov
Earle Miller
Angelo Pinto
Salvatore Pinto
Henry C. Pitz*
Herbert Pullinger*
Robert Riggs*
Benton Spruance*
W. B. Vann Ausdall
Roswell Weidne

Gallery hours: Wednesday, Friday, Saturday, Sunday: 1 PM to 5 PM

December 2017

Membership

Not a PSC Member?: Join Now!

If you're reading this edition of the Portfolio and you're not a member of the PSC, you should consider joining the more than 200 other Philadelphia area artists who have. The PSC is one of the most active visual art venues serving center city Philadelphia. The PSC is a hands-on organization that offers its members the opportunity to participate in all aspects of creating and presenting work to the public. It presents over 20 scheduled group and solo exhibitions annually and offers a wide range of daily workshops. [Get info and an application here.](#)

If you are a member of the PSC, please feel free to share the Portfolio with your artist friends and encourage them to become members.

Membership Renewal

You can check the status of your membership by going to the Current Members page on the PSC web-site: <http://sketchclub.org/sample-page/memberspace/>. All current members are listed. An asterisk (*) means that the membership has expired but is within the 60-day grace period for renewal. Names in red are active links to the individual's web site.

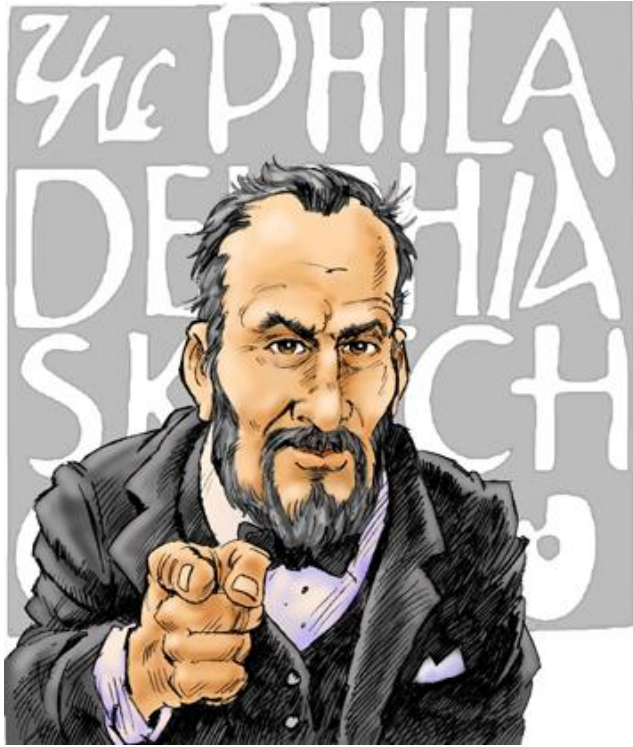
Renew Now! <http://sketchclub.org/annual-dues-payment/>

If you have any questions about your membership, please don't hesitate contact us at membership@sketchclub.org or call the office: 215-545-9298.

Gallery hours: Wednesday, Friday, Saturday, Sunday: 1 PM to 5 PM

December 2017

Volunteer



The Philadelphia Sketch Club is managed entirely by volunteers except for the gallery manager, housekeeping, and bookkeeper.

Here are some of the activities volunteers perform:

- Chair exhibitions
- Assist in hanging exhibitions
- Covering exhibition drop-offs and pick-ups
- Monitor workshops
- Assist with presentations
- Serve on the Board of Directors
- Serve as Key Circle volunteers
- Publish the Portfolio
- Manage the PSC web site
- Gallery coverage
- Graphics for Portfolio, PSC web site, social media
- Assist in every aspect of managing the club and providing member services

The PSC always needs volunteer members. Volunteering is one of the most important aspects of being a Sketch Club member and it is the one of the best ways to take advantage of the PSC. You'll be working with colleagues who share the same interests and helping the PSC provide unique services to the visual arts community. Sign up for an activity today.

Go to <http://sketchclub.org/member-volunteers/> for more details about how you can support the PSC by becoming a volunteer or call Michelle at 215-545-9298

Gallery hours: Wednesday, Friday, Saturday, Sunday: 1 PM to 5 PM

December 2017

Support the Sketch Club

Contribute

Please consider making your tax-deductible contribution now. These funds will be put to good use providing enhanced services to our members and friends.

Membership dues cover only a small portion of the PSC's operating expenses. Competition for funding for arts organizations like the Sketch Club is increasingly competitive and total funding for the arts is shrinking. Your additional support will keep the PSC an active support for visual artists in the Metropolitan Philadelphia area. The Philadelphia Sketch Club is an IRS designated 501(c) (3) non-profit organization which allows your donations to be tax deductible.

You can call the office at 215-545-9298, mail checks to the Sketch Club or visit the Contribute page of our Website.

Visit our **Contribute** page of our website to give online at:

<http://sketchclub.org/support-us/>

You can also support the PSC on an ongoing basis when you shop on Amazon. Go to: <http://smile.amazon.com/> and enter the Philadelphia Sketch Club in the Pick your own charitable organization box.

Your support makes it possible for the PSC to continue providing ongoing daily workshops and numerous annual gallery exhibitions.



Sketch Club Members receive a
25% discount at Merion Art.
Use promo code "PSC"
online at www.merionart.com

"Our staff of experienced artists, custom framers, and designers can answer your art materials questions and help to creatively solve all your artistic problems. Stop in our store for personalized friendly attention, or go to merionart.com for access to thousands of quality art products!"

Monday - Friday: 8:30am - 6:00pm
Saturday: 9:00am - 5:30pm
Sunday: 12:00pm - 5:00pm

Merion Art & Repro Center
17 West Lancaster Avenue
Ardmore, PA 19003

(610) 896-6161 - Phone
(610) 896-7781 - Fax

Gallery hours: Wednesday, Friday, Saturday, Sunday: 1 PM to 5 PM

December 2017

Support the Sketch Club

PHOTOLounge

The **PHOTOLounge** supports the Philadelphia Sketch Club and its members:

Sketch Club Members receive a 15% discount at PHOTOLounge.

Use online promo code "sketch".

The PHOTOLounge is located at 1909 Chestnut St. Philadelphia PA 19103.

For nearly 20 years, PHOTOLounge's focus has been the simple idea that pictures should be beautiful, affordable, and long lasting. We're a very adept photo lab with diverse services from iPhone printing to shoebox scanning. You can bring us film for processing, and also order prints online, or from the App. Come in and print your world.

Sketch Club Members receive a 15% discount at PHOTOLounge.

Use online promo code "sketch".

267-322-6651 – www.myphotolounge.com

Sketch Club members receive 20% discount



Framing Family Treasures for over 20 Years



We offer a variety of framing materials and techniques including:

- Archival / conservation treatment • Specialty mats (Linen, Suede, Silk)
- Stretching / Blocking of needleart and oils
- 1000's of moulding choices • 22 karat finished corner frames • Memorabilia framing
- Custom toning / coloring • Decorative mat cuts • French matting • Fillets
- Mirrors • Shadowboxing • Dry Mounting

www.CanalFrame.com • CanalFrame@comcast.net • 215-493-3660
1093 General Greene Road, Washington Crossing, PA 18977

Gallery hours: Wednesday, Friday, Saturday, Sunday: 1 PM to 5 PM

December 2017

Support the Sketch Club

Like, Link & Share

If you're not following the Philadelphia Sketch Club on Facebook re-tweeting Sketch Club tweets yet, it's time that you did. We have well over 2000 Facebook followers. Get the word out about the Sketch Club. Please click the like button and share your comments and invite your friends to like our page.

Follow @PhilaSketchClub on Twitter, we have almost 400 followers. Please click the heart button and re-tweet our announcements.

Include links on your website, blogs and social media to The Philadelphia Sketch Club to increase traction across social media platforms.

Follow us on Facebook, Twitter and Instagram now!

Thanks to Don Brewer and Michelle Lockamy for managing PSC social media sites.



Member Classifieds

Seeking Framers

Sketch Club members frequently ask about framing services. If you wish to provide framing services to PSC members, please contact the PSC at info@sketchclub.org or call the PSC office: 215 545-92908



Gallery hours: Wednesday, Friday, Saturday, Sunday: 1 PM to 5 PM

December 2017

The Portfolio: The newsletter of the Philadelphia Sketch Club is published monthly. Editor: Ken Weiner; Technical support and Web Master: Ken Weiner

Send your member news, announcements and corrections to portfolio@sketchclub.org. The due date for all materials is one week before the end of the month.

Back issues of the Portfolio are available at: <http://sketchclub.org/portfolio-archive/>

The Philadelphia Sketch Club

235 S Camac Street
Philadelphia, PA 19107
(215) 545-9298
<http://sketchclub.org/>
executivedirector@sketchclub.org

Gallery Manager: Michelle Lockamy

Officers:

- President: Richard Harrington
- Vice President: Kenneth Weiner
- Secretary: Fran Carter
- Treasurer: William Patterson

Board of Directors

- Elise Anzini
- Jacqueline Barnett
- Vincent Docktor
- Stephen Iwanczuk
- William Kosman
- Kevin Myers
- Charles F. Tarr
- Joe Winter