

Gallery hours: Wednesday, Friday, Saturday, Sunday: 1 PM to 5 PM

January 2018



Richard Harrington

This Month's Portfolio

2018 Main Gallery Schedule	2
2018 Stewart Gallery Schedule	5
Sketch Club Activities	6
Art Natters: Members News	10
Sketch Club Open Workshop Schedule	14
Opportunities	15
Membership	16
Volunteer	17
Support the Sketch Club	18
Member Classifieds	20

Send your member news, announcements and corrections to portfolio@sketchclub.org. The deadline for ALL submissions is 1-week before the end of the month.

Reminder: It's never too late. You can always renew your membership

You may pay online at <http://sketchclub.org/annual-dues-payment/>

or mail your check to:

The Philadelphia Sketch Club

235 S. Camac St.

Philadelphia, PA 19107

For questions please contact the Gallery Manager at 213335-545-9298 or email:

executivedirector@sketchclub.org

Late Breaking News – See items that were submitted after the publication date. Go to:

info@sketchclub.org

The PSC general email is: info@sketchclub

Gallery hours: Wednesday, Friday, Saturday, Sunday: 1 PM to 5 PM

January 2018

2018 Main Gallery Schedule

[See the 2018 Exhibition Schedule](#)

[Important dates for all PSC activities](#)

The 2018 PSC Annual Domenic DiStefano Memorial Works on Paper
Juried Exhibition

January 6 through 27, 2018

Opening Reception: January 14th 2:00 – 4:00 PM

PSC's annual open juried show of works on paper



2017 First Place Winner, Mateus Costa, Cristiana, Graphite

Gallery hours: Wednesday, Friday, Saturday, Sunday: 1 PM to 5 PM

January 2018

2018 Main Gallery Schedule

Coming Next Month

The School District of Philadelphia & the Philadelphia Sketch Club presents:

The 34th Annual Philadelphia Sketch Club's High School Art Show and Art Teachers' Exhibition February 5-25, 2018



Image: The Judges' Choice,
PSC High School Art Show 2017
Madolin Mast, Central High School

Reception and Awards Ceremony:

Sunday, February 25th 2:00-3:30 PM

At the Philadelphia Sketch Club

235 South Camac Street

Philadelphia, PA 19107

(Between 12th & 13th Streets and
Locust & Spruce Streets)

Gallery Hours: Wed., Fri., Sat., Sun., 1-5 PM

www.sketchclub.org 215-545-9298

DELIVERY AND HANGING BY INVITED HS ART TEACHER:

- Wednesday, January 31, 2018, 3:00 – 6:00 PM
- Thursday, February 1, 2018, 3:00 – 6:00 PM
- Friday, February 2, 2018, 3:00 – 6:00 PM

Take Down: Sunday, February 25, 2018, 3:30- 5:00 PM

JUDGING FOR AWARDS: Monday, February 12, 10:00 AM

JUDGES:

- Lynne Horoschak, Retired Director of Art Education, Moore College of Art & Design, Retired Art Teacher, School District of Philadelphia
- Kathleen Catanese, Retired Art Teacher, Nottingham High School, Hamilton Township, New Jersey
- Harriet Ackerman, Retired Art Teacher, Lower Merion High School

2018 Main Gallery Schedule

Hello Members,

Once again it is time to start planning for the High School Art Show (2018). As usual, we will be asking our loyal generous members for tax deductible contributions for awards for the young artists' artwork. The same procedure is still in place. Please make your check out to the "Philadelphia Sketch Club", with a note in the lower left corner, "HS Art Show Award", and mail it or bring it to the PSC office, Michelle Lockamy, Executive Director. Her hours are Wed., and Fri.!!:00-5:00PM. Also, notify the amount of your award (s) to Dorothy Roschen, in person, by Phone (215 848 3257), or email (droschen@me.com). Any amount is gratefully needed and appreciated. We do like each awardee to receive at least \$ 25.00. To achieve this, we combine donors for one award and some donors give multiple awards. Every donor is recognized on a posted complete awards list in the gallery, which is also in the catalogue. (Award amounts are not posted.). **THE CUT-OFF DATE FOR DONATING AWARDS IS FRIDAY, FEBRUARY 9, 2018.**

Deborah Klose, Director of Art Education, School District of Philadelphia, will send the call to entry letters to all School District High School Art Teachers (no charter schools). Usually, about 25-30 teachers respond and they bring and hang 5 labeled pieces each from their classrooms.

To volunteer to help the Art Teachers hang the work on delivery days (Jan.31, Feb.1&2) let Dorothy know or to sign up-go to the "Volunteers" under the Membership tab on the PSC website. Food donations for the reception (Feb. 25) will be asked for closer to that date.

There will be also the Art Teachers' Exhibition in the Stewart Room Gallery. Delivery and

dates of this are the same as the students' show and only the art teachers that bring student work can participate. The teachers' work will be for sale. The students' work is not for sale.

Thank you, Members, for your wonderful support for this show. It would be absolutely impossible without you.

Sincerely, Dorothy Roschen, Chair, 2018 HS Art Show, (215 848 3257), droschen@me.com, and Committee
Jacqueline Barnett, Chair, 2018 HS Art Teachers' Show, Stewart Room, PSC
Deborah Klose, Director of Art Education, School District of Philadelphia

Gallery hours: Wednesday, Friday, Saturday, Sunday: 1 PM to 5 PM

January 2018

2018 Stewart Gallery Schedule

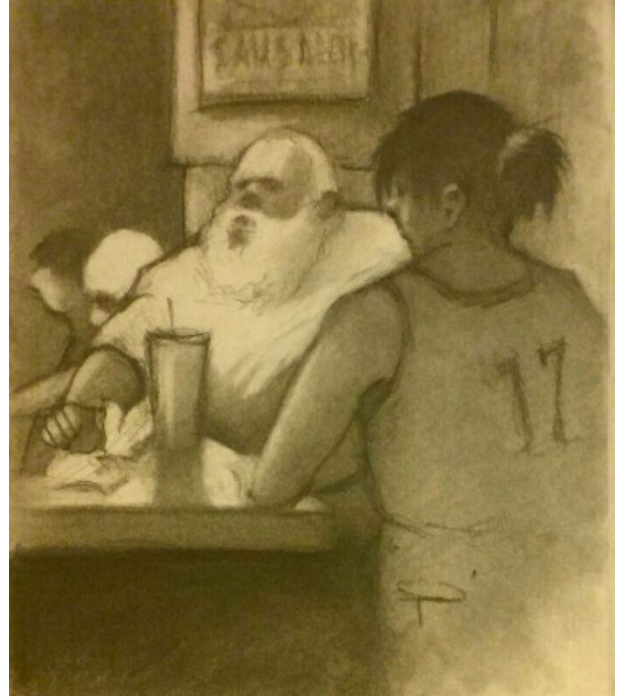
Robert Bohné and Art Spikol

January 14 through 31, 2018

Opening Reception:

January 14th 2:00 – 4:00 PM

Opening Sun. Jan. 14th - 2 pm to 4 pm. Available for viewing: January 2. Robert will be sharing the the Stewart room with good friend and fellow artist Art Spikol. The show will focus on several years of sketches with the inclusion of several recent paintings. The opening will take place on the same day as the Sketch Clubs Works on Paper Show.



Berger and Shake 12"X 9" charcoal



Work waiting to go up.

[See the 2018 Exhibition Schedule](#)

[Important dates for all PSC activites](#)

Gallery hours: Wednesday, Friday, Saturday, Sunday: 1 PM to 5 PM

January 2018

Sketch Club Activities

Dinner Meeting

Friday January 12th, 2018

Dinner and Presentation Open to the Public

Please RSVP to Michelle in the PSC office by 12 Noon

Wednesday January 10th, 2018

AGENDA

- 5:30- Social Period Begins
- 6:15- Speaker
- 7:15- Dinner

DINNER

- Members - \$16
- Guests - \$18



Guest Speaker: TBD

Check the PSC website at: sketchclub.org for updates

Critique Night – Next Meeting: January 17th, 2018

Open to PSC Members and Non-Members

RSVP to **Michelle Lockamy** at 215-545-9298 or
executivedirector@sketchclub.org

Critique Night is held in the Library of the Sketch Club every third Wednesday beginning at 7 PM. Bring work you've finished, work in progress, or just sketches for work you're planning! Photos, digital work, drawings, all mediums are welcome; we can project digital images on a screen for review, so you have the option to show work that may be too big or too heavy to transport to the Club. There is no one individual directing the critique, just your fellow artists and peers. Facilitated/monitored by **Rich Harrington**, PSC President

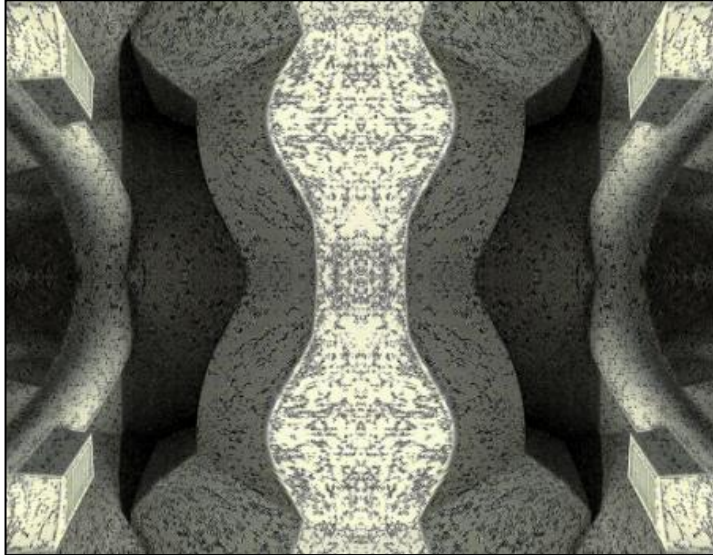


Gallery hours: Wednesday, Friday, Saturday, Sunday: 1 PM to 5 PM

January 2018

Sketch Club Activities

Photo Circle— **Next Meeting: January 11th, 2018 from 6:30 to 8:30 PM**



We will discuss new group activities and possibilities for expansion. The Photo Circle meets every 2nd Thursday at 6:30 PM. You can contact Steve anytime at si22@drexel.edu or 215-300-9192 (cell). **Steve Iwanczuk**, Photo Circle Monitor and Member of Philadelphia Sketch Club Board of Directors.

Did you know? Sketch Club Members George T. Morgan, John Sinnock and Frank Gasparro were all Chief Engravers of the U. S. Mint and held that position for a combined total of 46 years.

Sketch Club Activities

The Philadelphia Sketch Club's new community outreach program of painting demonstrations was kicked off on Dec.6, 2017, at the senior center, the North City Congress, on North Broad Street, up near Temple University. PSC member **Bill Kosman** demonstrated to almost 20 members at the Congress his brush and palette knife work while painting a still life of a bouquet and several pieces of fruit. Kosman reports that it was a lively session with a lot of discussion and humor, and for him a true pleasure. If any Sketch Club members are interested in participating in the program, please contact bill at; billkosman@gmail.com. For the full story and images, go to Bill's Painter's Blog: www.williamkosman.blogspot.com



Bill's Demonstration



Painting Demonstration: Bill Kosman

Gallery hours: Wednesday, Friday, Saturday, Sunday: 1 PM to 5 PM

January 2018

Sketch Club Activities

Photos from the PSC 2017 Holiday Party



A great time was
had by all who
attended the
PSC's 2017
Holiday Party



Gallery hours: Wednesday, Friday, Saturday, Sunday: 1 PM to 5 PM

January 2018

Art Natters: Members News

PSC member **Alice Chung** has an MCGOPA Exhibition (title of Seeing Double) at the 431 Art Gallery
Nov 17, 2017 through Jan 17, 2018 431 West Valley Forge Rd, King of Prussia, PA



PSC member **Nancy Halbert** is offering Communications in Drawing and Paint - Wednesdays 1:30-4:30 pm 1/10 - 2/14 at the Woodmere Art Museum: <https://woodmereartmuseum.org/>

Between reality and abstraction, lies expressionism and the motivation to paint in a distinct style. In this course, content will include the figure, landscape photo references that the teacher provides, and still life. With the observance of the art principles, line, shape, color, value, and texture, we will use the subject as a jumping ground to draw and paint with an expressive freedom that pushes the conversation of real and imagined. This class will open your eyes to new ways to mixing materials, such as charcoal, watercolor, ink, oil and acrylic paint with one another. We will start classes with quick sketches to help with drawing skills and to organize one's painting into a unified composition.



Degas Dancer 2, Oil and pastel on Canvas. 2017

Gallery hours: Wednesday, Friday, Saturday, Sunday: 1 PM to 5 PM

January 2018

Art Natters: Members News

PSC member **Susan Barnes** received First Place Award in the 2017 Small Works show at the Medford Arts Center for her oil painting "Brilliant Flowers".

She also had two Solarplate etchings accepted in The Philadelphia Sketch Club's 2018 Domenic DiStefano Memorial Works On Paper Juried Exhibition. Show runs January 6 through 27, 2018. Reception Sunday, January 14 from 2 to 4pm.

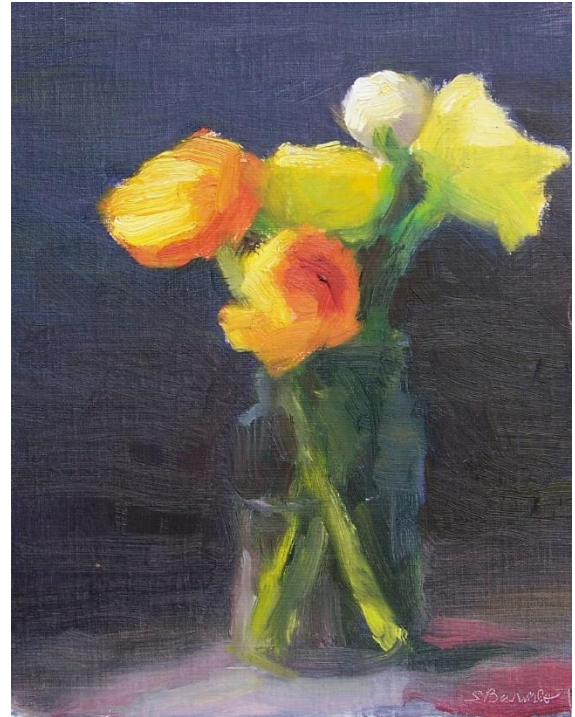
Workshops:

Susan Barnes will be giving a **free** demo, **Painting the Still Life in Oil**, on Friday, January 5, 2018 from 6 to 8pm. This will be followed by six-week workshop, beginning January 18, 2018, on Thursdays from 6:30 to 9pm. Both are given at the **Medford Arts Center, 18 N. Main St., Medford, NJ 08055**.

Susan will also be doing a **free** demo, **Gelatin Monotype**, on Sunday, January 14, 2018 from 1 to 3pm. with a 3-session workshop to follow in March 2018.

For more information or to sign up for either the demos or classes:

Contact the **Medford Arts Center** 609-654-6033 or www.medfordarts.com



Brilliant Flowers

PSC member **Su Knoll Horthy** will be exhibiting at Hardcastle Gallery in Centreville, DE, in their upcoming 2017 Annual Holiday Art Show. The Opening Night Reception will be on Friday, December 1, 5:30 to 8:30pm.

The exhibit will run November 24th through January 8, 2018. www.hardcastlegallery.com for more information."



Gallery hours: Wednesday, Friday, Saturday, Sunday: 1 PM to 5 PM

January 2018

Art Natters: Members News

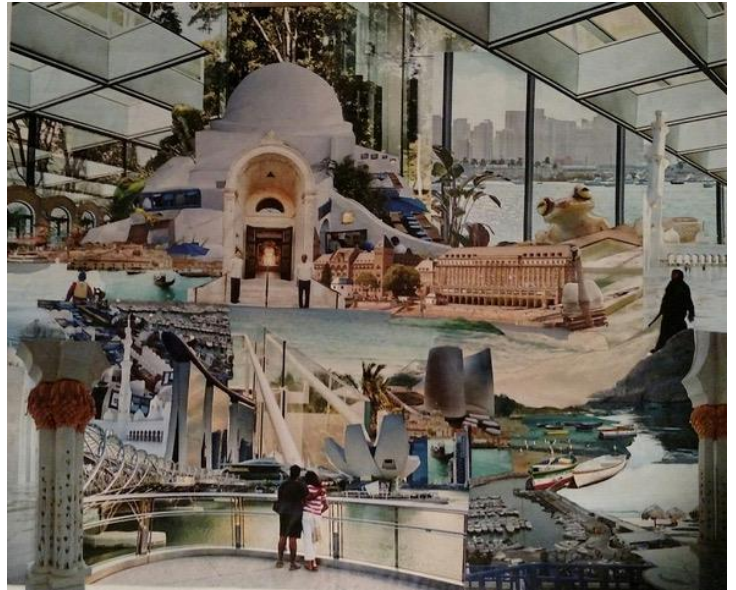
PSC member **Annie Stone** is debuting her latest collage series, "Bella Vista," at Gallery Sensei in the Lower East Side of NYC, December 13 to January 7, 2018.

The opening reception will be held:

- Thursday, December 14, 2017, 6pm to 9pm
- Free & open to the community
- Light refreshments will be served
- Gallery Sensei, 135 Eldridge St, New York, NY 10002

Annie's website is:

<https://www.anniestonenaturecollage.com/>



PSC member **Elaine Lisle**



Crossing Uber Street

Recent Work

December 12-, 2017- January 18, 2018

Opening Reception, Friday, December 15, 2017

4-7PM

The Cosmopolitan Club of Philadelphia

1616 Latimer Street, Philadelphia

Exhibition courtesy of Ross McCleaf Gallery

Viewing hours after reception: 10AM-12noon and 2pm-4pm

Call the receptionist at 215-735-1057 ext. 10

Gallery hours: Wednesday, Friday, Saturday, Sunday: 1 PM to 5 PM

January 2018

Art Natters: Members News

PSC member **Dino Sistilli's** painting, "Saturday Morning", has won Best of Show at the Ocean City Art Center 2017 Annual Juried Art Show.

Dino's work has also been on display at the Cherry Hill Library's gallery from December 1 to January 3.



January

Gallery hours: Wednesday, Friday, Saturday, Sunday: 1 PM to 5 PM

January 2018

Sketch Club Open Workshop Schedule

All workshops are open to the public. There is no need to register before attending. You do NOT have to be a member of the Philadelphia Sketch Club to participate in the workshops. Our workshops are open to anyone who is interested in drawing, painting or printmaking. All skill levels are welcome. Fees: Model workshops: \$8/session members, \$9/session for non-PSC members; Printmaking workshop: \$10/session; All workshops \$6 for full-time students. Monitored by PSC members.

Life Model	Costumed Model	Printmaking
<p>Mondays – Extended pose (multi-session): 6:30 PM-9:30PM</p> <p>Monitors: Robert Bohne, Vince Docktor, Dan Kuetemeyer</p> <p>Tuesdays – Extended pose: 12:00 PM to 3:00 PM Monitor: Jacqueline Barnett</p> <p>Wednesdays – Extended pose: 6:30 to 9:30 PM Monitor: Vince Docktor</p> <p>Saturdays – Extended pose: 9:30 AM to 12:30 PM Monitor: Vince Docktor</p>	<p>Thursdays</p> <p>Extended pose</p> <p>12:00 PM to 3:00 PM Monitor: Bob Bohne.</p>	<p>Tuesdays</p> <p>10:00 AM to 2:00 PM Monitor: Elizabeth H. MacDonald</p>

Please Note: Those who use oil paints should bring their own container(s) to remove used solvents. Odorless solvents only.

Did you know? N. C. Wyeth had his first large solo exhibition at the Philadelphia Sketch Club in 1912.

Opportunities

Land Art Events

LandArt Events receives state arts funding support through a grant from the Pennsylvania Council on the Arts, a state agency funded by the Commonwealth of Pennsylvania and the National Endowment for the Arts, a federal agency. Farm to Table Plein Air: Bringing Art to the Table is a unique art creating, and selling opportunity. Come help tell the story of land conservation in the Brandywine Valley.

Creating art on private lands protected by Brandywine Conservancy Easements.

Juried Artists Starting in March - Application deadline March 1, 2018

Unique culminating event, Community days and community involvement.

For more information and to apply please visit: www.LandArtEvents.com

ABOUT OUR BEGINNINGS....

Three years ago, a group of painters started to paint at agricultural lands that are close to Philadelphia. This is land that suburban development is encroaching upon and it is land that helps feed the Philadelphia community.

The first year, twelve artists painted for a few months in the summer and then had a show at the Frame Station Gallery in Berwyn. Since the farmers were being so generous by allowing us to paint on their properties. We wanted to give back in some way to the farming community. We contacted several land preservation organizations wanting to have them be the recipients of a donation. Believe it or not, only one organization responded to our emails and this started our relationship with the Brandywine Conservancy. They became the recipient organization of our small donation.

Over the next year, we continued to paint and brainstormed with the Brandywine Conservancy about possibilities for a project down to road which would have a much larger scope. We decided to do one more test run to see if there was still interest from both the artists and landowners. We painted from spring to fall and then partnered with Lundale Farm, a cooperative farm, which assists farmers starting their businesses. The final event was a Hootenanny which featured an art show in the main barn. Nine artists participated and most of them sold paintings.

On a lark, after these successful events we decided to apply to the Pennsylvania Arts Council for a Project Stream Grant. The Brandywine Conservancy assisted us and agreed to be our fiscal agent. We did not really believe we would get the grant but to our amazement we were named a recipient.

There are participating artists out and about painting, even on a snowy Saturday. We have new artists and landowners participating this year. In addition to these new properties, we will also be going to some of the properties from previous years. We are so grateful to the landowners who have put Brandywine Conservancy easements in place and graciously opened their properties to our artists. In addition, our artists will be painting at the Bryn Mawr Farmers market and at a CSA pick up at Miller Farm. We are actively planning a unique event for the fall of 2018 at the Miller Farm. Once again, we will feature an art show along with locally grown food.

To learn more about our plans this year and/or apply to participate as a landowner, an artist a patron, sponsor or volunteer please visit our new website www.LandArtEvents.com. Interested in following our story and receive updates? Sign up for our email newsletter.

Contact Deena Ball deena@landartevents.com

Membership

Recent New PSC Members

The Sketch Club welcomes new members recently approved by the Board of Directors.

- Jay Bowden
- Susan Seykora
- Merdis Foster
- Jane Ramsey
- Julie Shea
- Kathleen S. Catanese

Current Sketch Club members can review new member applications at: <http://sketchclub.org/member-applications/>. The members only section and documents are password protected. If you've forgotten the password, please contact Ken Weiner at: membership@sketchclub.org.

Not a PSC Member?: Join Now!

If you're reading this edition of the Portfolio and you're not a member of the PSC, you should consider joining the more than 200 other Philadelphia area artists who have. The PSC is one of the most active visual art venues serving center city Philadelphia. The PSC is a hands-on organization that offers its members the opportunity to participate in all aspects of creating and presenting work to the public. It presents over 20 scheduled group and solo exhibitions annually and offers a wide range of daily workshops. [Get info and an application here.](#)

If you are a member of the PSC, please feel free to share the Portfolio with your artist friends and encourage them to become members.

Membership Renewal

You can check the status of your membership by going to the Current Members page on the PSC web-site: <http://sketchclub.org/sample-page/memberspace/>. All current members are listed. An asterisk (*) means that the membership has expired but is within the 60-day grace period for renewal. Names in red are active links to the individual's web site.

Renew Now! <http://sketchclub.org/annual-dues-payment/>

If you have any questions about your membership, please don't hesitate to contact us at membership@sketchclub.org or call the office: 215-545-9298.

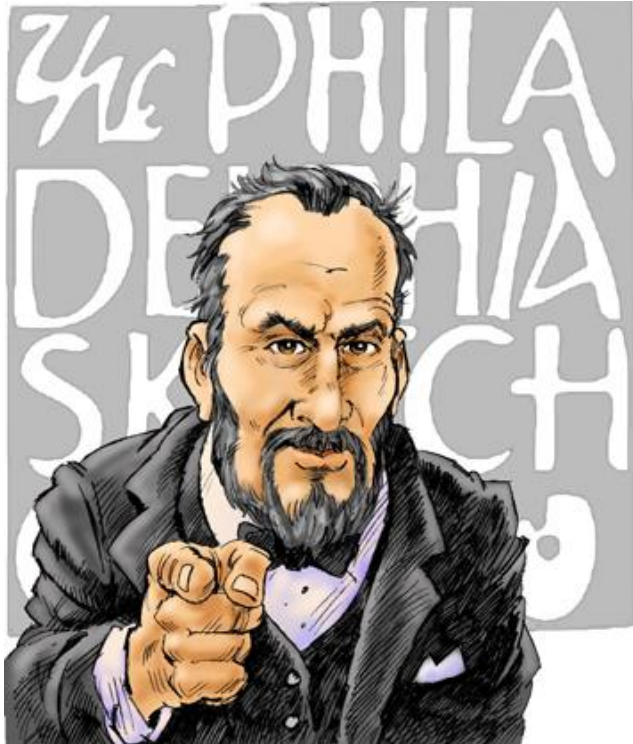
Did you know? John Sinnock designed the rendition of the Lincoln Memorial on the reverse of the Lincoln penny which has had more than 100 billion copies produced. When someone asked Sinnock if they could see his artwork, he replied "Look in your pocket."

Gallery hours: Wednesday, Friday, Saturday, Sunday: 1 PM to 5 PM

January 2018

Volunteer

We Need You!



The Philadelphia Sketch Club is managed entirely by volunteers except for the gallery manager, housekeeping, and bookkeeper.

Here are some of the activities volunteers perform:

- Chair exhibitions
- Assist in hanging exhibitions
- Covering exhibition drop-offs and pick-ups
- Monitor workshops
- Assist with presentations
- Serve on the Board of Directors
- Serve as Key Circle volunteers
- Publish the Portfolio
- Manage the PSC web site
- Gallery coverage
- Graphics for Portfolio, PSC web site, social media
- Assist in every aspect of managing the club and providing member services

The PSC always needs volunteer members. Volunteering is one of the most important aspects of being a Sketch Club member and it is the one of the best ways to take advantage of the PSC. You'll be working with colleagues who share the same interests and helping the PSC provide unique services to the visual arts community. Sign up for an activity today.

Go to <http://sketchclub.org/member-volunteers/> for more details about how you can support the PSC by becoming a volunteer or call Michelle at 215-545-9298

Gallery hours: Wednesday, Friday, Saturday, Sunday: 1 PM to 5 PM

January 2018

Support the Sketch Club

Contribute

Please consider making your tax-deductible contribution now. These funds will be put to good use providing enhanced services to our members and friends.

Membership dues cover only a small portion of the PSC's operating expenses. Competition for funding for arts organizations like the Sketch Club is increasingly competitive and total funding for the arts is shrinking. Your additional support will keep the PSC an active support for visual artists in the Metropolitan Philadelphia area. The Philadelphia Sketch Club is an IRS designated 501(c) (3) non-profit organization which allows your donations to be tax deductible.

You can call the office at 215-545-9298, mail checks to the Sketch Club or visit the Contribute page of our Website.

Visit our **Contribute** page of our website to give online at:

<http://sketchclub.org/support-us/>

You can also support the PSC on an ongoing basis when you shop on Amazon. Go to:

<http://smile.amazon.com/> and enter the Philadelphia Sketch Club in the Pick your own charitable organization box.

Your support makes it possible for the PSC to continue providing ongoing daily workshops and numerous annual gallery exhibitions.



**Sketch Club Members receive a
25% discount at Merion Art.
Use promo code "PSC"
online at www.merionart.com**

"Our staff of experienced artists, custom framers, and designers can answer your art materials questions and help to creatively solve all your artistic problems. Stop in our store for personalized friendly attention, or go to merionart.com for access to thousands of quality art products!"

Monday - Friday: 8:30am - 6:00pm
Saturday: 9:00am - 5:30pm
Sunday: 12:00pm - 5:00pm

Merion Art & Repro Center
17 West Lancaster Avenue
Ardmore, PA 19003

(610) 896-6161 - Phone
(610) 896-7781 - Fax

Gallery hours: Wednesday, Friday, Saturday, Sunday: 1 PM to 5 PM

January 2018

Support the Sketch Club

PHOTOLounge

The **PHOTOLounge** supports the Philadelphia Sketch Club and its members:

Sketch Club Members receive a 15% discount at PHOTOLounge.

Use online promo code "sketch".

The PHOTOLounge is located at 1909 Chestnut St. Philadelphia PA 19103.

For nearly 20 years, PHOTOLounge's focus has been the simple idea that pictures should be beautiful, affordable, and long lasting. We're a very adept photo lab with diverse services from iPhone printing to shoebox scanning. You can bring us film for processing, and also order prints online, or from the App. Come in and print your world.

Sketch Club Members receive a 15% discount at PHOTOLounge.

Use online promo code "sketch".

267-322-6651 – www.myphotolounge.com

Sketch Club members receive 20% discount




Framing Family Treasures for over 20 Years



We offer a variety of framing materials and techniques including:

- Archival / conservation treatment • Specialty mats (Linen, Suede, Silk)
- Stretching / Blocking of needleart and oils
- 1000's of moulding choices • 22 karat finished corner frames • Memorabilia framing
- Custom toning / coloring • Decorative mat cuts • French matting • Fillets
- Mirrors • Shadowboxing • Dry Mounting

www.CanalFrame.com • CanalFrame@comcast.net • 215-493-3660
1093 General Greene Road, Washington Crossing, PA 18977

Gallery hours: Wednesday, Friday, Saturday, Sunday: 1 PM to 5 PM

January 2018

Support the Sketch Club

Like, Link & Share

If you're not following the Philadelphia Sketch Club on Facebook re-tweeting Sketch Club tweets yet, it's time that you did. We have well over 2000 Facebook followers. Get the word out about the Sketch Club. Please click the like button and share your comments and invite your friends to like our page.

Follow @PhilaSketchClub on Twitter, we have almost 400 followers. Please click the heart button and re-tweet our announcements.

Include links on your website, blogs and social media to The Philadelphia Sketch Club to increase traction across social media platforms.

Follow us on Facebook, Twitter and Instagram now!

Thanks to Don Brewer and Michelle Lockamy for managing PSC social media sites.



Member Classifieds

Seeking Framers

Sketch Club members frequently ask about framing services. If you wish to provide framing services to PSC members, please contact the PSC at info@sketchclub.org or call the PSC office: 215 545-92908



Gallery hours: Wednesday, Friday, Saturday, Sunday: 1 PM to 5 PM

January 2018

The Portfolio: The newsletter of the Philadelphia Sketch Club is published monthly. Editor: Ken Weiner;
Technical support and Web Master: Ken Weiner

Send your member news, announcements and corrections to portfolio@sketchclub.org. The due date for all materials is one week before the end of the month.

Back issues of the Portfolio are available at: <http://sketchclub.org/portfolio-archive/>

The Philadelphia Sketch Club

235 S Camac Street
Philadelphia, PA 19107
(215) 545-9298
<http://sketchclub.org/>
executivedirector@sketchclub.org

Gallery Manager: Michelle Lockamy

Officers:

- President: Richard Harrington
- Vice President: Kenneth Weiner
- Secretary: Fran Carter
- Treasurer: William Patterson

Board of Directors

- Elise Anzini
- Jacqueline Barnett
- Vincent Docktor
- Stephen Iwanczuk
- William Kosman
- Kevin Myers
- Charles F. Tarr
- Joe Winter