

Gallery hours: Wednesday, Friday, Saturday, Sunday: 1 PM to 5 PM

March 2018

## The Art of the Flower 2018 *presented in Memory of Donald C. Meyer*



Richard Harrington

### This Month's Portfolio

|                                    |    |
|------------------------------------|----|
| 2018 Main Gallery Schedule         | 2  |
| 2018 Stewart Gallery Schedule      | 3  |
| Sketch Club Activities             | 4  |
| Art Natters: Members News          | 6  |
| Sketch Club Open Workshop Schedule | 10 |
| Opportunities/Notices              | 11 |
| Membership                         | 15 |
| Volunteer                          | 16 |
| Support the Sketch Club            | 17 |
| Member Classifieds                 | 19 |

Send your member news, announcements and corrections to [portfolio@sketchclub.org](mailto:portfolio@sketchclub.org). The deadline for ALL submissions is 1-week before the end of the month.

Reminder: It's never too late. You can always renew your membership

You may pay online at <http://sketchclub.org/annual-dues-payment/>

or mail your check to:

The Philadelphia Sketch Club

235 S. Camac St.

Philadelphia, PA 19107

For questions please contact the Gallery Manager at 213335-545-9298 or email:

[executivedirector@sketchclub.org](mailto:executivedirector@sketchclub.org)

Late Breaking News – See items that were submitted after the publication date. Go to:

[info@sketchclub.org](mailto:info@sketchclub.org)

The PSC general email is: [info@sketchclub.org](mailto:info@sketchclub.org)

Gallery hours: Wednesday, Friday, Saturday, Sunday: 1 PM to 5 PM

March 2018

## 2018 Main Gallery Schedule

[See the 2018 Exhibition Schedule](#) [Important dates for all PSC activities](#)

### The Art of the Flower 2018 *presented in memory of Donald C. Meyer*



March 4th through March 30th, 2018 at the Philadelphia Sketch Club

#### The Art of the Flower 2018

*Presented in memory of Donald C. Meyer*

**March 4th through March 30th**

Opening Reception

Sunday, March 11th, 2 to 4 PM

*Awards and presentation of the*

*Donald C. Meyer Medal at 3 PM*

at the Philadelphia Sketch Club



235 S. Camac Street

Philadelphia, PA

19107-5608

215-545-9298

[www.sketchclub.org](http://www.sketchclub.org)

Front of card image:

Elaine Lisle, *Reflections on Lotus*

2017 Art of the Flower Best of Show Winner

#### Reception:

**Sunday March 11, 2018, 2-4 PM**

Gallery hours: Wednesday, Friday, Saturday, Sunday: 1 PM to 5 PM

March 2018

## 2018 Stewart Gallery Schedule

### Coming in March

### Hanna Aufschauer Memorial Exhibition

March 4th – March 31<sup>st</sup>

Reception: Sun Mar 11, 2018, 2-4 PM

Celebrating the life of a beloved artist and PSC member



### Exhibition space in the Stewart Gallery is available for PSC Members!

Reserve the gallery by  
contacting our  
Exhibition Coordinator:  
[exhibitions@sketchclub.org](mailto:exhibitions@sketchclub.org)

The space is \$150 for a  
month. Members can  
show once in the Stewart  
Gallery per year.

[See the 2018 Exhibition Schedule](#)

[Important dates for all PSC activities](#)

## Sketch Club Activities

### Dinner and Presentation Open to the Public

Please RSVP to Michelle  
in the PSC office by 12

Noon

Wednesday March 7th,  
2018

#### AGENDA

- 5:30- Social  
Period Begins
- 6:15- Speaker
- 7:15- Dinner
- DINNER**
- Members - \$16
- Guests - \$18

### Menu

- Chicken Milanese
- Potato salad,
- Roasted carrots
- Spinach ravioli
- Tossed salad
- Cheesecake

### The March 2018 Pennsylvania Sketch Club Dinner Meeting Friday, March 9th, featuring:

## Strathmore® The Essentials of Paper

Sarah Becketl, Artist Educator for Strathmore Artists Paper, will present “The Essentials of Paper”, a 90-minute hands-on presentation on Strathmore Drawing and Watercolor Papers. The presentation will focus on how understanding a paper’s fiber, weight, texture, surface, grade and permanency affect an artist’s choice and usage of fine art paper. Attendees participate in hands-on exercises, using a selection of papers and drawing materials. The goal of the presentation is to provide information to help artists select the right papers for their medium and techniques.

The presentation will cover all aspects of fine art drawing papers including:

- **History of Writing Surfaces:** *parchment to papyrus to paper*
- **History of Paper:** *from China to Europe*
- **How Paper is Made:** *past and present*
- **Handmade paper vs. Machine made paper**
- **Components of Paper:** *fiber, watermark, surface texture, sizing, weight, permanence.*
- **Environmentally friendly papers and alternative fibers**
- **Types of Paper:** *newsprint, sketching, drawing, bristol, illustration, charcoal, pastel, watercolor, mixed-media*
- **Grades of Paper:** *student, artist, professional*
- **Paper Storage**

Attendees will receive **FREE:**

- Strathmore papers & literature
- Selection of drawing materials
- Watercolor brush



#### About the Presenter

Sarah Becketl lives in Jersey City, NJ and works out of her studio in Newark, NJ. She received her BFA in painting from the Tyler School of Art, and has continued her studies of representational drawing and painting at multiple locations including Studio Incamminati in Philadelphia and the Art Students League in NYC. Sarah worked as the Product Research Director for the Colored Pencil Society of America from 2009 to 2015, during which time she tested colored pencils for lightfastness and educated members on

archival issues of drawing materials. Sarah is a member of the American Society for Testing Materials (ASTM) where she helps to revise and maintain standards related to colored pencils and lightfast testing. Since 2005, Sarah has actively exhibited both her works on paper and oil paintings throughout the U.S. As an Artist Educator for Strathmore Artist Papers and Gamblin Artist’s Colors, Sarah gives lectures on the attributes and uses of fine art materials. Her work can be viewed at: [www.sarahbecketl.com](http://www.sarahbecketl.com)

- **Cocktail hour 5 to 6 PM in the Library •**
- **Presentation begins at 6 in Upstairs Gallery •**
- **Dinner served at 7:30 PM in the Sketch Club Rathskellar •**
- **\$16.00 for PSC Members, \$18 for guests •**

Please RSVP to [executivedirector@sketchclub.org](mailto:executivedirector@sketchclub.org)  
or phone 215.545.9298 by Wednesday, March 7th

Gallery hours: Wednesday, Friday, Saturday, Sunday: 1 PM to 5 PM

March 2018

## Sketch Club Activities

### Critique Night – Next Meeting: March 21st, 2018

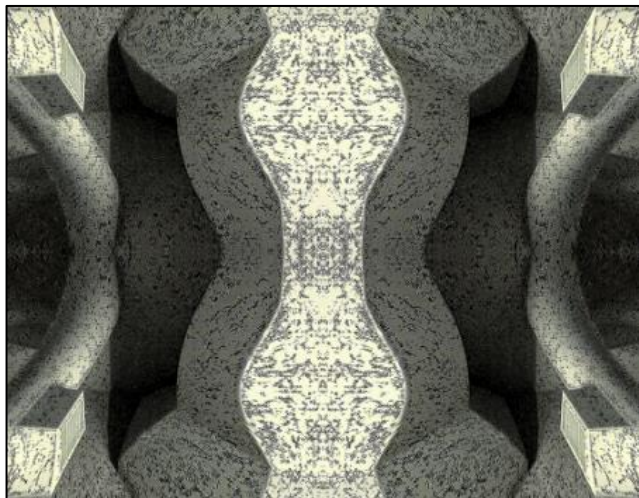
#### Open to PSC Members and Non-Members

RSVP to **Michelle Lockamy** at 215-545-9298 or  
[executivedirector@sketchclub.org](mailto:executivedirector@sketchclub.org)

Critique Night is held in the Library of the Sketch Club every third Wednesday beginning at 7 PM. Bring work you've finished, work in progress, or just sketches for work you're planning! Photos, digital work, drawings, all mediums are welcome; we can project digital images on a screen for review, so you have the option to show work that may be too big or too heavy to transport to the Club. There is no one individual directing the critique, just your fellow artists and peers. Facilitated/monitored by **Rich Harrington**, PSC President



### Photo Circle– Next Meeting: March 8th, 2018 from 6:30 to 8:30 PM



We will discuss new group activities and possibilities for expansion. The Photo Circle meets every 2<sup>nd</sup> Thursday at 6:30 PM. You can contact Steve anytime at [si22@drexel.edu](mailto:si22@drexel.edu) or 215-300-9192 (cell). **Steve Iwanczuk**, Photo Circle Monitor and Member of Philadelphia Sketch Club Board of Directors.

### Help Needed on Archives Committee

Come join the Archives Committee for an enjoyable couple of hours as we work organizing and securing the records and artifacts of the Club. Activities will include selecting one of the Anschutz portraits for restoration, selecting some of the old newsletter articles for republication in future Portfolios, and filing recent Portfolios and Exhibition literature. It is not uncommon for a glass of wine to follow this strenuous work. We will do this on Sunday, April 1st, from 1 to 3 PM, which coincides with the pick-up for the Art of the Flower Exhibition. If you can help with this archives work, please notify Bill Patterson at [bpatterson2045@comcast.net](mailto:bpatterson2045@comcast.net) or call 267-664-2434. Thank you!

## Art Natters: Members News

### PA Convention Center Adds PSC member **Eric Hall's** Work to Permanent Art Collection



Eric Hall - Expressway

PNC member Eric Hall was honored to be among the Pennsylvania-based artists whose work was chosen in the Pennsylvania Convention Center Authority (PCCA) Juried Art Competition.

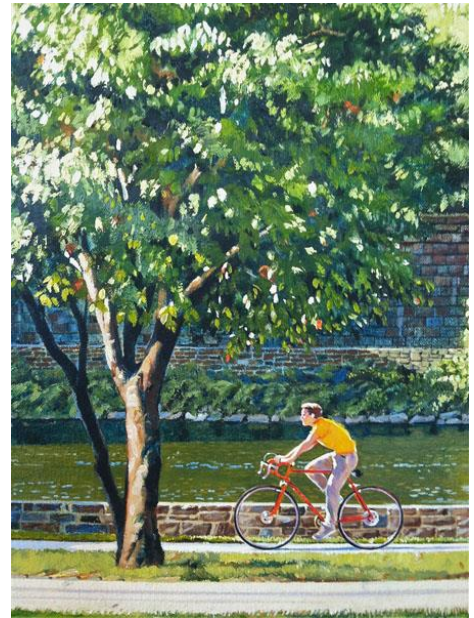
Out of 1550 submissions in the Open Call, 127 works of art from 68 artists were selected.

Hall's 6' x 10' triptych painting *Expressway* was installed in the main first floor concourse of the 2011 expansion of the Convention Center.

PCCA recently announced the completion of the \$1.5 million competition, which was juried by an Expansion Art Committee comprised

of prominent members of the Pennsylvania arts community.

You can see more of Eric's work at [www.erichallpaintings.com](http://www.erichallpaintings.com)



Detail: Expressway Cyclist

Sketch Club member **Su Knoll Horthy** is pleased to have two of her "Essence" paintings on display, in a group exhibition, at the Sonesta Hotel Philadelphia.

The group show will hang for six to twelve months and is co-sponsored by the Center for Emerging Visual Artists (Cfeva)

Gallery hours: Wednesday, Friday, Saturday, Sunday: 1 PM to 5 PM

March 2018

## Art Natters: Members News

On Jan. 11, Sketch Club member **Bill Kosman** contributed one of his paintings - "Spring Garden Scene" - to the Philadelphia Senior Center (509 South Broad St., Philadelphia, PA 19147), during a ceremony recognizing a Day of Service in honor of dr. Martin Luther King Jr. Kosman explained to some 50 members of the center why he painted the scene, what he tries to say through his art, and what it means to be a painter. He said he feels really good about the donation.

If anyone wants to know the process he followed in selecting the center and making the donation, please feel free to contact him at [billkosman@gmail.com](mailto:billkosman@gmail.com) To learn more, you can access his painter's blog at [www.williamkosman.blogspot.com](http://www.williamkosman.blogspot.com)



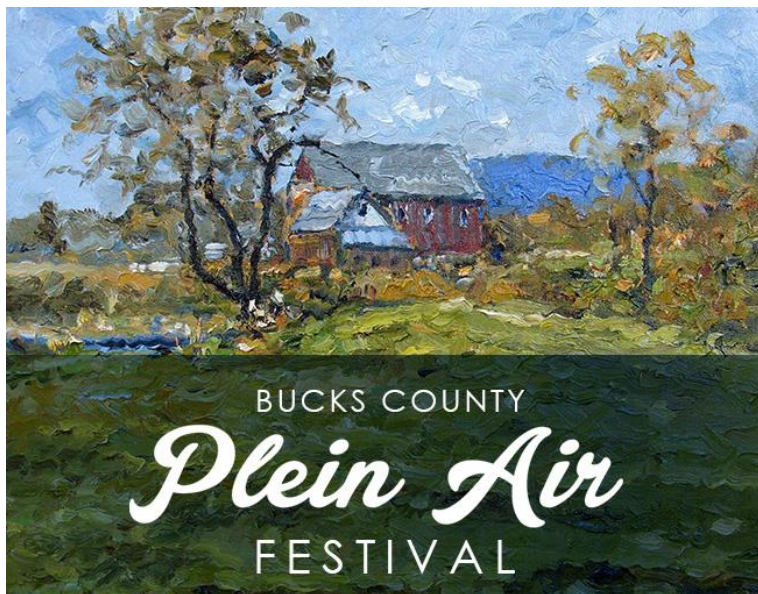
Photos: AMP Studios

Gallery hours: Wednesday, Friday, Saturday, Sunday: 1 PM to 5 PM

March 2018

## Art Natters: Members News

### Bucks County Plein Air Festival Online Application Deadline - March 4, 2018



#### [Get the Prospectus](#)

Join us for a week of plein air painting in verdant and historic Bucks County, located in the Philadelphia countryside. Paint the rolling landscapes, lakes and rivers, covered bridges, stone farm houses, and historic estates that have inspired artists for more than a century. Jointly hosted by Bucks County Community College, the Central Bucks Chamber of Commerce and Sketch Club member **Alan Fetterman** Fine Arts, proceeds will support art scholarships and arts programming in Bucks County.

Sketch Club member **Richard Harrington** will take part in "The Final Four", a group exhibition at the Artists' Gallery in Lambertville, New Jersey. The exhibition will take place between March 8th and April 1st, 2018. An opening reception is scheduled for Saturday, March 10th, from 2 to 6 PM. The Artists' Gallery is located at 18 Bridge Street, in Lambertville.

Beginning in January 2018, the Artists' Gallery has been featuring its 16 members in month long group exhibitions of four artists each; this is the final exhibition of that series. The three other artists besides Rich Harrington include watercolorist Jane Adriance, photographer Joseph Defay, and oil painter Laura Rutherford-Renner.

[www.lambertvillearts.com](http://www.lambertvillearts.com)



1960 Chevrolet, watercolor on paper

Gallery hours: Wednesday, Friday, Saturday, Sunday: 1 PM to 5 PM

March 2018

## Art Natters: Members News



Peace

Sketch Club member **Alice Chung** has accepted one of her paintings, Peace: Oil, 30" x 38, to Philadelphia Story Magazine in March 2018 Edition.

Also she will be exhibiting 3 paintings at NoBA gallery in Bala Cynwyd, PA. from March 10 to April 7, 2018.

In March Sketch Club member **Annette Alessil** will exhibit at [Mala Galleria](#) in Kennett

Mala Galleria is having a First Friday, March 2nd, exhibition and the theme is called "Wonder of Waters". My favorite subject to paint!!! Show hours are from 6-9 pm and the show runs from March 1- March 31st, 2018. So,



stop out Friday night and check it out! I will have this new piece called "Bellevue State Park" shown above, and a few others all expressing water scenes. Add an Annette Alessi original to your collection! [Mala Gallery's](#) address is 200 East State Street, Kennett Square, PA 19348 | 484.883.5429.

The annual Chadds Ford Elementary School Art Show will have my works displayed on Friday, March 16th and Saturday March 17th. Check the [Chadds Ford Art Show](#) website for more details.

## Did you know?

Samuel Yellin (1885–1940) was America's master iron craftsman of the twentieth century and was a member of the Sketch Club from 1922 to 1940.

Gallery hours: Wednesday, Friday, Saturday, Sunday: 1 PM to 5 PM

March 2018

## Sketch Club Open Workshop Schedule

All workshops are open to the public. There is no need to register before attending. You do NOT have to be a member of the Philadelphia Sketch Club to participate in the workshops. Our workshops are open to anyone who is interested in drawing, painting or printmaking. All skill levels are welcome. Fees: Model workshops: \$8/session members, \$9/session for non-PSC members; Printmaking workshop: \$10/session; All workshops \$6 for full-time students. Monitored by PSC members.

| Life Model  | Costumed Model   | Printmaking  |
|---|--|--|
| <p>Mondays – Extended pose (multi-session): 6:30 PM-9:30PM</p> <p>Monitors: Robert Bohne, Vince Docktor, Dan Kuetemeyer</p> <p>Tuesdays – Extended pose: 12:00 PM to 3:00 PM<br/>Monitor: Jacqueline Barnett</p> <p>Wednesdays – Extended pose: 6:30 to 9:30 PM<br/>Monitor: Vince Docktor</p> <p>Saturdays – Extended pose: 9:30 AM to 12:30 PM<br/>Monitor: Vince Docktor</p> | <p>Thursdays</p> <p>Extended pose</p> <p>12:00 PM to 3:00 PM<br/>Monitor: Bob Bohne.</p> | <p>Tuesdays</p> <p>10:00 AM to 2:00 PM<br/>Monitor:<br/>Elizabeth H. MacDonald</p> |

**Please Note: Those who use oil paints should bring their own container(s) to remove used solvents. Odorless solvents only.**

**Did you know?** Brothers Thomas (landscape painter), Edward (marine painter) and Peter (etcher) Moran were all members of the Sketch Club. Edward served as Vice President in 1865.

## Opportunities/Notices

As a courtesy to our non-PSC-member friends, in support of the Philadelphia artist community, we publish your notices, etc., free of charge. However, contributions to the PSC are always welcome.

[Contribute to the Sketch Club Here](#)

### "Plein Air Plus" 2018

"Plein Air Plus" 2018 is Third Annual National Juried Competition at the Long Beach Island Foundation of the Arts, NJ.

A unique opportunity for artists & educators who wish to push the boundaries of landscape painting!

Juror Valerie Craig will select 35 artists to paint the unique seashore environment of Long Beach Island during a two-month Paint Out, allowing artists the freedom to participate at any time during July and August

We welcome artists to apply to a unique Plein Air Event! Our Paint Out, over a two-month period, allows artists to visit and paint the scenic, seashore environment of Long Beach Island (LBI) New Jersey on their own schedule, any time between July 1st through August 31st. Artists can choose the time of day, weather, and varied locations to paint. Artists can paint as often as they wish and enjoy the beautiful coastal landscape.

Culminating in the "Island Life" exhibition and gallery sale in September, 135 paintings will feature the selected artist's Plein Air works and larger studio paintings developed from Plein Air studies. Several prizes will be awarded for both Classical "Plein Air" and "Plein Air Plus" paintings. Prizes for both Classical "Plein Air" and "Plein Air Plus" paintings will be awarded by the Juror at the opening reception on September 23 (artists are not required to attend the reception).

Questions? Email us at: [exhibitions@lbifoundation.org](mailto:exhibitions@lbifoundation.org)

**Apply on-line:** [https://www.callforentry.org/festivals\\_unique\\_info.php?ID=4799](https://www.callforentry.org/festivals_unique_info.php?ID=4799)

Entry Deadline: May 11th, 2018

Paint Out: July 1st - August 31st

Quick Draws: July 13th & August 10th

"Island Life" Exhibition: September 7th - October 26<sup>th</sup>

*The Long Beach Island Foundation of the Arts & Sciences*

*2018 Plein Air Plus - National Juried Competition*

The Prospectus can be found here:

<http://lbifoundation.org/events/plein-air-plus-2018-national>

Gallery hours: Wednesday, Friday, Saturday, Sunday: 1 PM to 5 PM

March 2018

## Opportunities/Notices

**Patricia Ingersoll** is exhibiting at Cerulean Arts as a new Collective Member.  
Reception March 3rd, 2-5pm.



CATHEEN COHEN



PATRICIA INGERSOLL



MICHAEL MOORE



LIZ PRICE



DENISE SEDOR

### CERULEAN ARTS COLLECTIVE

March 3 - 31, 2018

Opening Reception:  
Saturday, March 3, 2018 2 - 5 pm

Featuring exhibitions by Collective Members

Cathleen Cohen  
Patricia Ingersoll  
Michael Moore  
Liz Price  
Denise Sedor

#### FRONT IMAGES:

Cathleen Cohen, Atmospheric, aqueous media on paper, 22" x 30"  
Patricia Ingersoll, Arrangement, acrylic, 16" x 16"  
Michael Moore, Hidden Within, ink on paper, 24" x 22"  
Liz Price, Sunflower and Little Jar (for L.), oil on panel, 24" x 24"  
Denise Sedor, Soul Sisters, oil on board, 24" x 24"



### Cerulean Arts

GALLERY - STUDIO

1355 Ridge Avenue  
Philadelphia, PA 19123  
267-514-8647  
www.ceruleanarts.com



### Cerulean Arts

Cultivating an appreciation for art by  
presenting exhibitions, offering unique  
decorative and fine art for sale and  
providing art instruction for personal  
fulfillment.

Gallery Hours:  
Wednesday - Friday: 10 am - 6 pm  
Saturday and Sunday: 12 pm - 6 pm

**Peter Defeo** writes: As always, we have been very busy. TV and movie has had me running in NYC. As we travel drawings of others on the trains, el, metro and buses keep me occupied.

Contract, three paintings 36X36 and one 36X60 for Dr. Office need competition by end of February. Five story boards are in the works for March and book illustrations for April. Demand is there. Keeps me young working around the clock. Have not had a TV for over 15 years. Google keeps me informed as I fly from client to client.

## Opportunities/Notices

### [Call for artists: Get the Prospectus Here](#)

We are excited to announce the call for entries for the 2018 New Hope Art League

Juried Art Show at The Conservatory, 4059 Skyron Dr., Doylestown, PA.!! With up to

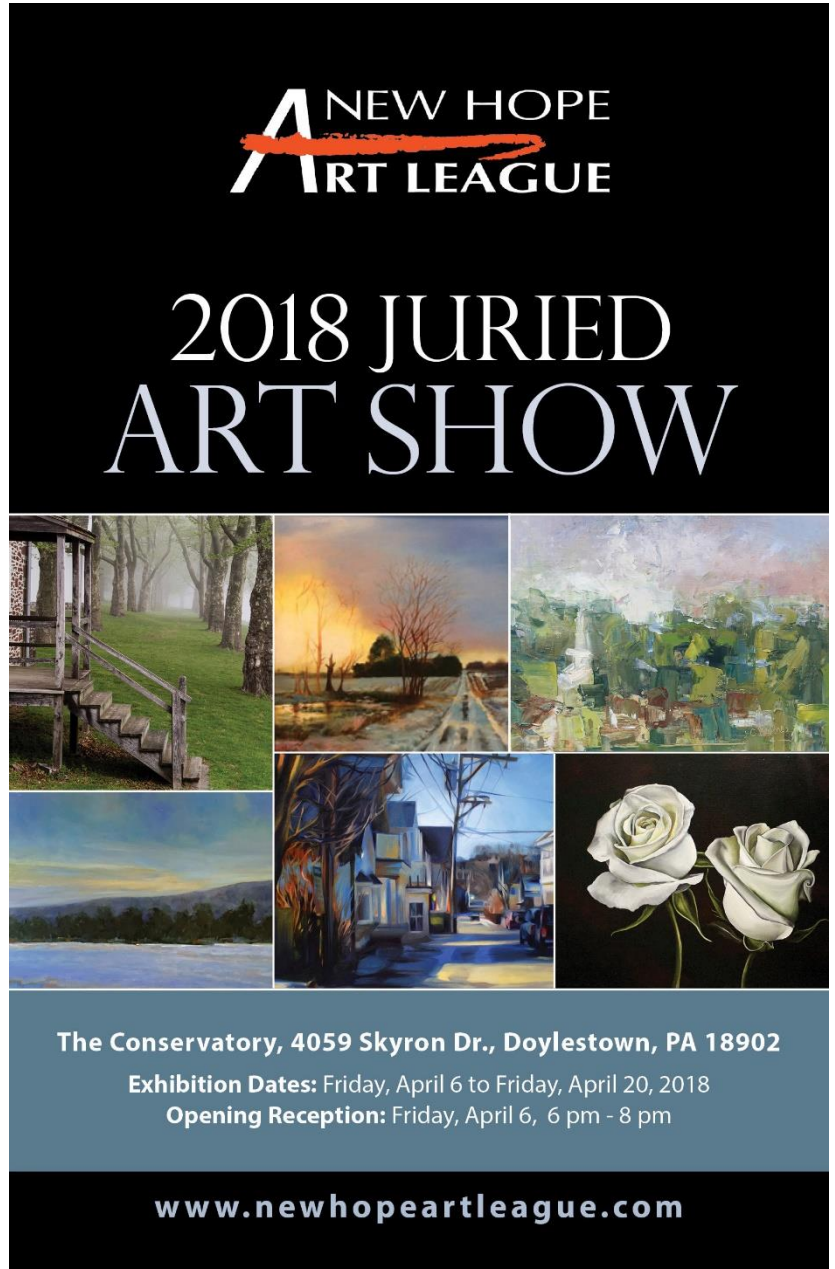
\$3000. in awards and 2 very prestigious jurors, Lisa Tremper Hanover, former CEO of the Michener Museum, and James Toogood, renowned painter and teacher at PAFA, you

don't want to miss it. Enter online via the NewHopeArtLeague.com site through Entrythingy.

A portion of the show's proceeds fund our art scholarship for a local high school


student. We also collect food for the Bucks County Housing Group food pantry.

- March 1-Entry deadline by 6 pm
- March 15-Accepted list posted online
- April 2-Delivery of accepted work 10 am-7 pm
- April 6-Opening reception 6 pm- 8 pm
- April 20-Last day of show
- April 24-Pick up 10 am - 7 pm



**A NEW HOPE  
ART LEAGUE**

# 2018 JURIED ART SHOW



**The Conservatory, 4059 Skyron Dr., Doylestown, PA 18902**

**Exhibition Dates:** Friday, April 6 to Friday, April 20, 2018  
**Opening Reception:** Friday, April 6, 6 pm - 8 pm

**[www.newhopeartleague.com](http://www.newhopeartleague.com)**

## Opportunities/Notices

Hello Artists at the Philadelphia Sketch Club,

My name is Garin Horner I am an artist/professor that lives in Ann Arbor, Michigan. I am writing to ask for help and/or advice on a photography project I'm working on. I am wondering if you may be able to help to connect me with anyone that would be willing to be photographed with her/his art altar or shrine? Or could you offer advice on connecting with people who may be interested? I will be in Philly for a national photography conference and would be available to photograph any time on or between March 4<sup>th</sup> -8<sup>th</sup>.

I am hoping that you might know people who would be willing to be photographed. I am particularly interested in beautiful and/or ornate altars. But, simple altars are also beautiful. I would be happy to offer a museum quality exhibition print to anyone who participates.

I exhibit the photographs in museums and galleries around the world, including the Louvre, in Paris. I may also produce a book of these images. You can see examples of my photographs at <http://www.garinhorner.net/2016-2017.html>

Also, you can find a description of my project here: <http://www.garinhorner.net/as-2017.html>

Thank you so much

[Garin Horner](#)

Associate Professor of Art, Director: Adrian College Center for Effective Teaching

Vice Chair & Secretary, [Midwest Society for Photographic Education](#)

[Department of Art & Design Adrian College](#)

Mahan Hall 11A - 517.265.5161 xt. 4099

[ghorner@adrian.edu](mailto:ghorner@adrian.edu)

[adrianartblog](#)

[garinhorner.com](http://garinhorner.com)

Author: [The Photography Teacher's Handbook: Practical Methods for Engaging Students in the Flipped Classroom](#)

Co-Author: [Teaching Photography: Tools for The Imaging Educator 2nd Ed.](#)

(Both books published by [Focal Press](#))

As you may be aware, Philadelphia artist. **Albert Gury's** home and studio was destroyed by fire early Sunday morning. Thankfully Al was able to make it out safely, but his beloved cats and his belongings were all lost. Al has spent a lifetime giving to others and we hope that you will join us in supporting Al during this difficult time. See more: <http://www.philly.com/philly/news/fire-in-old-city-dozens-evacuated-20180218.html>

Help Al recover: <https://www.gofundme.com/support-al-gury>

## Membership

### Recent New PSC Members

The Sketch Club welcomes new members recently approved by the Board of Directors.

- Melvin Chappell
- Michele Pierson
- Misha Goodman
- Susan Shipley
- Andrew Criss
- Jillian Robostello
- Karen Mark

Current Sketch Club members can review new member applications at: <http://sketchclub.org/member-applications/>. The members only section and documents are password protected. If you've forgotten the password, please contact Ken Weiner at: [membership@sketchclub.org](mailto:membership@sketchclub.org).

### Not a PSC Member?: Join Now!

If you're reading this edition of the Portfolio and you're not a member of the PSC, you should consider joining the more than 200 other Philadelphia area artists who have. The PSC is one of the most active visual art venues serving center city Philadelphia. The PSC is a hands-on organization that offers its members the opportunity to participate in all aspects of creating and presenting work to the public. It presents over 20 scheduled group and solo exhibitions annually and offers a wide range of daily workshops. [Get info and an application here.](#)

If you are a member of the PSC, please feel free to share the Portfolio with your artist friends and encourage them to become members.

### Membership Renewal

You can check the status of your membership by going to the Current Members page on the PSC web-site: <http://sketchclub.org/sample-page/memberspace/>. All current members are listed. An asterisk (\*) means that the membership has expired but is within the 60-day grace period for renewal. Names in red are active links to the individual's web site.

Renew Now! <http://sketchclub.org/annual-dues-payment/>

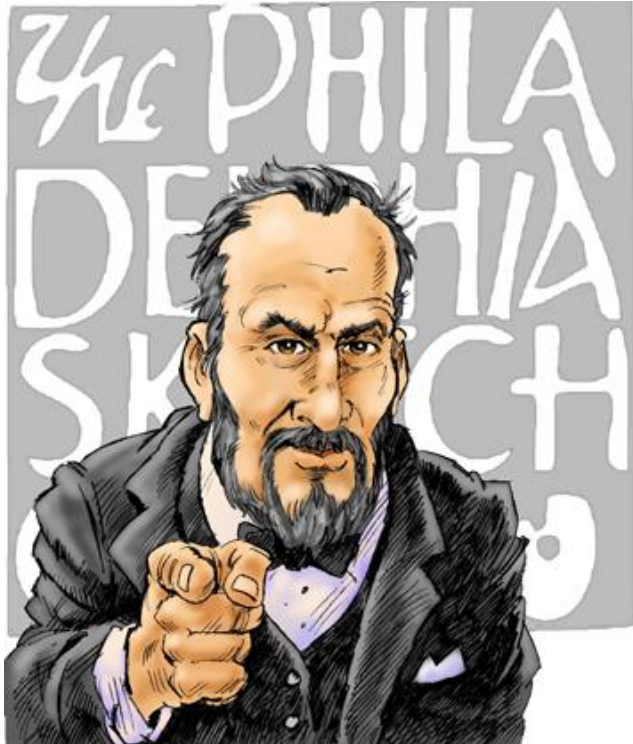
If you have any questions about your membership, please don't hesitate to contact us at [membership@sketchclub.org](mailto:membership@sketchclub.org) or call the office: 215-545-9298.

### Did you know?

N. C. Wyeth had his first large solo exhibition at the Philadelphia Sketch Club in 1912

## Volunteer

### We Need You!



The Philadelphia Sketch Club is managed entirely by volunteers except for the gallery manager, housekeeping, and bookkeeper.

Here are some of the activities volunteers perform:

- Chair exhibitions
- Assist in hanging exhibitions
- Covering exhibition drop-offs and pick-ups
- Monitor workshops
- Assist with presentations
- Serve on the Board of Directors
- Serve as Key Circle volunteers
- Publish the Portfolio
- Manage the PSC web site
- Gallery coverage
- Graphics for Portfolio, PSC web site, social media
- Assist in every aspect of managing the club and providing member services

The PSC always needs volunteer members. Volunteering is one of the most important aspects of being a Sketch Club member and it is the one of the best ways to take advantage of the PSC. You'll be working with colleagues who share the same interests and helping the PSC provide unique services to the visual arts community. Sign up for an activity today.

Go to <http://sketchclub.org/member-volunteers/> for more details about how you can support the PSC by becoming a volunteer or call Michelle at 215-545-9298

Gallery hours: Wednesday, Friday, Saturday, Sunday: 1 PM to 5 PM

March 2018

## Support the Sketch Club

### Contribute

Please consider making your tax-deductible contribution now. These funds will be put to good use providing enhanced services to our members and friends.

Membership dues cover only a small portion of the PSC's operating expenses. Competition for funding for arts organizations like the Sketch Club is increasingly competitive and total funding for the arts is shrinking. Your additional support will keep the PSC an active support for visual artists in the Metropolitan Philadelphia area. The Philadelphia Sketch Club is an IRS designated 501(c) (3) non-profit organization which allows your donations to be tax deductible.

You can call the office at 215-545-9298, mail checks to the Sketch Club or visit the Contribute page of our Website.

Visit our **Contribute** page of our website to give online at:

<http://sketchclub.org/support-us/>

You can also support the PSC on an ongoing basis when you shop on Amazon. Go to:

<http://smile.amazon.com/> and enter the Philadelphia Sketch Club in the Pick your own charitable organization box.

Your support makes it possible for the PSC to continue providing ongoing daily workshops and numerous annual gallery exhibitions.



**Sketch Club Members receive a**

**25% discount at Merion Art.**

**Use promo code "PSC"**

**online at [www.merionart.com](http://www.merionart.com)**

"Our staff of experienced artists, custom framers, and designers can answer your art materials questions and help to creatively solve all your artistic problems. Stop in our store for personalized friendly attention, or go to [merionart.com](http://merionart.com) for access to thousands of quality art products!"

Monday - Friday: 8:30am - 6:00pm  
Saturday: 9:00am - 5:30pm  
Sunday: 12:00pm - 5:00pm

**Merion Art & Repro Center**  
17 West Lancaster Avenue  
Ardmore, PA 19003

(610) 896-6161 - Phone  
(610) 896-7781 - Fax

Gallery hours: Wednesday, Friday, Saturday, Sunday: 1 PM to 5 PM

March 2018

## Support the Sketch Club

# PHOTOLounge

The **PHOTOLounge** supports the Philadelphia Sketch Club and its members:

**Sketch Club Members receive a 15% discount at PHOTOLounge.**

**Use online promo code "sketch".**

The PHOTOLounge is located at 1909 Chestnut St. Philadelphia PA 19103.

For nearly 20 years, PHOTOLounge's focus has been the simple idea that pictures should be beautiful, affordable, and long lasting. We're a very adept photo lab with diverse services from iPhone printing to shoebox scanning. You can bring us film for processing, and also order prints online, or from the App. Come in and print your world.

**Sketch Club Members receive a 15% discount at PHOTOLounge.**

**Use online promo code "sketch".**

**267-322-6651 – [www.myphotolounge.com](http://www.myphotolounge.com)**

## Sketch Club members receive 20% discount



**Canal Frame-Crafts  
Gallery**

Framing Family Treasures for over 20 Years



*We offer a variety of framing materials and techniques including:*

- Archival / conservation treatment • Specialty mats (Linen, Suede, Silk)
- Stretching / Blocking of needleart and oils
- 1000's of moulding choices • 22 karat finished corner frames • Memorabilia framing
- Custom toning / coloring • Decorative mat cuts • French matting • Fillets
- Mirrors • Shadowboxing • Dry Mounting

**www.CanalFrame.com • CanalFrame@comcast.net • 215-493-3660**  
**1093 General Greene Road, Washington Crossing, PA 18977**

Gallery hours: Wednesday, Friday, Saturday, Sunday: 1 PM to 5 PM

March 2018

## Support the Sketch Club

### Like, Link & Share

If you're not following the Philadelphia Sketch Club on Facebook re-tweeting Sketch Club tweets yet, it's time that you did. We have well over 2000 Facebook followers. Get the word out about the Sketch Club. Please click the like button and share your comments and invite your friends to like our page.

Follow @PhilaSketchClub on Twitter, we have almost 400 followers. Please click the heart button and re-tweet our announcements.

Include links on your website, blogs and social media to The Philadelphia Sketch Club to increase traction across social media platforms.

Follow us on Facebook, Twitter and Instagram now!

Thanks to Don Brewer and Michelle Lockamy for managing PSC social media sites.



## Member Classifieds

### Seeking Framers

Sketch Club members frequently ask about framing services. If you wish to provide framing services to PSC members, please contact the PSC at [info@sketchclub.org](mailto:info@sketchclub.org) or call the PSC office: 215 545-92908



Gallery hours: Wednesday, Friday, Saturday, Sunday: 1 PM to 5 PM

March 2018

The Portfolio: The newsletter of the Philadelphia Sketch Club is published monthly. Editor: Ken Weiner;  
Technical support and Web Master: Ken Weiner

Send your member news, announcements and corrections to [portfolio@sketchclub.org](mailto:portfolio@sketchclub.org). The due date for all materials is one week before the end of the month.

Back issues of the Portfolio are available at: <http://sketchclub.org/portfolio-archive/>

#### **The Philadelphia Sketch Club**

235 S Camac Street  
Philadelphia, PA 19107  
(215) 545-9298  
<http://sketchclub.org/>  
[executivedirector@sketchclub.org](mailto:executivedirector@sketchclub.org)

Gallery Manager: Michelle Lockamy

#### **Officers:**

- President: Richard Harrington
- Vice President: Kenneth Weiner
- Secretary: Fran Carter
- Treasurer: William Patterson

#### **Board of Directors**

- Elise Anzini
- Jacqueline Barnett
- Vincent Docktor
- Stephen Iwanczuk
- William Kosman
- Kevin Myers
- Charles F. Tarr
- Joe Winter