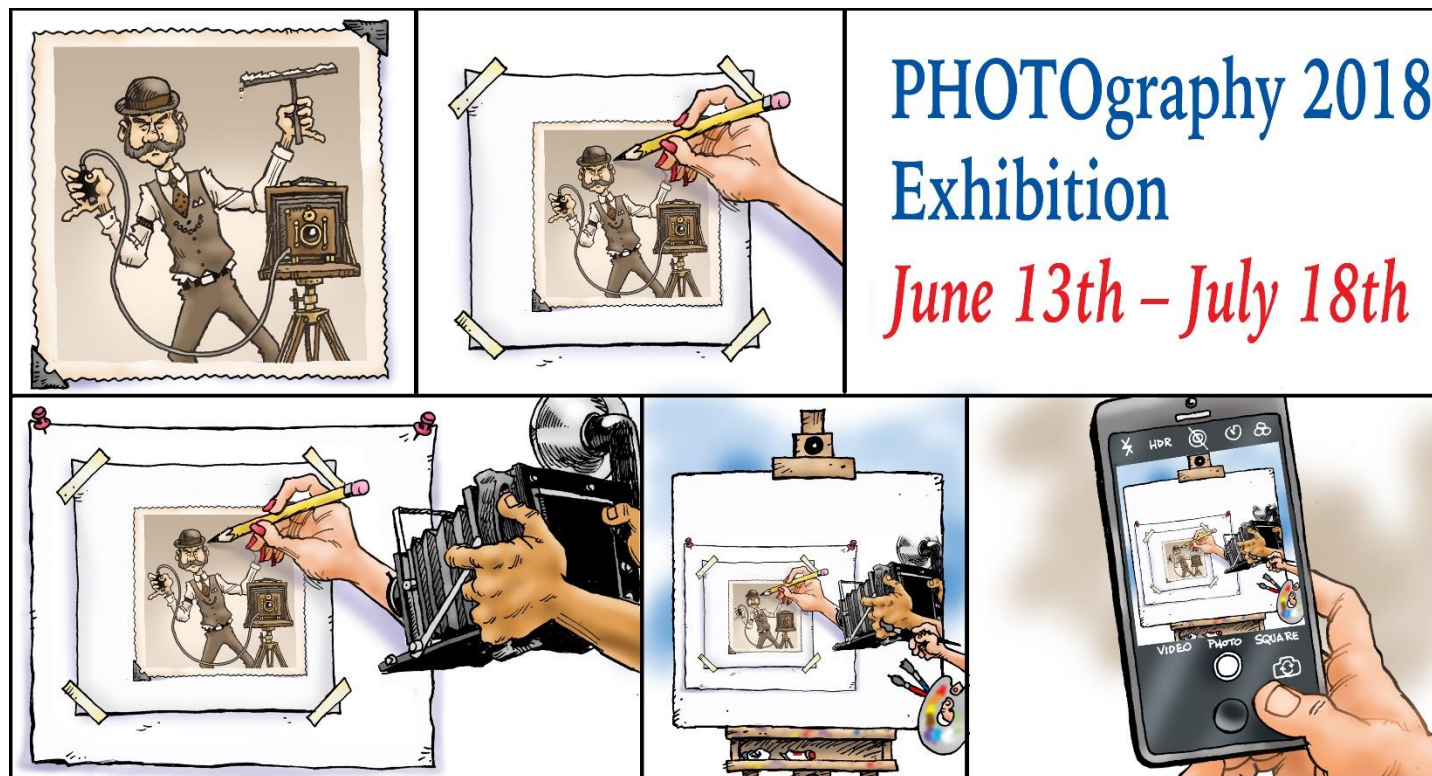


Gallery hours: Wednesday, Friday, Saturday, Sunday: 1 PM to 5 PM

June 2018



Richard Harrington

## PHOTOgraphy 2018 Exhibition

*June 13th – July 18th*

### This Month's Portfolio

2018 Main Gallery Schedule	2
2018 Stewart Gallery Schedule	3
Sketch Club Activities	4
Art Natters: Members News	10
Sketch Club Open Workshop Schedule	16
Opportunities/Notices	17
Membership	20
Volunteer	21
Support the Sketch Club	22
Member Classifieds	24

Send your member news, announcements and corrections to [portfolio@sketchclub.org](mailto:portfolio@sketchclub.org). The deadline for ALL submissions is 1-week before the end of the month.

Reminder: It's never too late. You can always renew your membership

You may pay online at <http://sketchclub.org/annual-dues-payment/>

or mail your check to:

The Philadelphia Sketch Club

235 S. Camac St.

Philadelphia, PA 19107

For questions please contact the Gallery Manager at 213335-545-9298 or email:

[executivedirector@sketchclub.org](mailto:executivedirector@sketchclub.org)

Late Breaking News – See items that were submitted after the publication date. Go to:

[info@sketchclub.org](mailto:info@sketchclub.org)

The PSC general email is: [info@sketchclub](mailto:info@sketchclub)

Gallery hours: Wednesday, Friday, Saturday, Sunday: 1 PM to 5 PM

June 2018

## 2018 Main Gallery Schedule

[See the 2018 Exhibition Schedule](#) [Important Dates for all PSC Activities](#)

### PHOTOgraphy 2018: June 13 -July 18, 201

The Sketch Club's Annual  
Photography Exhibition

See 120 images created by 75  
Philadelphia area artists.

Jurors:

**Julianna Foster** – Assistant  
Professor – Photography Program  
at the University of the Arts,  
Philadelphia PA

**David Graham** – Professor of  
Photography at the University of  
the Arts, Philadelphia PA



Preview the Exhibition: <http://www.sketchclub.org/photography-2018/#gallery>



Gallery hours: Wednesday, Friday, Saturday, Sunday: 1 PM to 5 PM

June 2018

## 2018 Stewart Gallery Schedule

### Next in the Stewart Gallery

#### 2018 Show Us Your Best Juried Exhibition of All Mediums & Themes

- July 25th – August 15th Open
- Online Entry Deadline: Sun Jul 8, 2018 at midnight
- Online jury: Jul 9, 10, 2018
- Notification: Jul 11, 2018
- Delivery: Fri Jul 20, Sat Jul 21, 2018, 1-5 PM
- Jury Prizes: Sun Jul 22, 2018, 11-2 PM
- Reception: Sun Aug 5, 2018, 2-4 PM
- Pickup: Fri Aug 17, Sat Aug 18, 2018, 1-5 PM

Juried Show Co-Chairs: Bhavisha Patel



**Exhibition space in the Stewart Gallery is available for PSC Members!**

Reserve the gallery by contacting our Exhibition Coordinator: [exhibitions@sketchclub.org](mailto:exhibitions@sketchclub.org)

The space is \$150 for a month. Members can show once in the Stewart Gallery per year.

[See the 2018 Exhibition Schedule](#)

[Important Dates for all PSC Activities](#)

**Did you know?** Robert Wylie, one of the original founders of the Sketch Club, served as Curator of the Pennsylvania Academy of the Fine Arts, and founded an artists colony in Pont-Aven, France, in 1864, twenty years before the arrival of Paul Gauguin.

Gallery hours: Wednesday, Friday, Saturday, Sunday: 1 PM to 5 PM

June 2018

## Sketch Club Activities

**SAVE THE DATE**  
**OCTOBER 6th, 2018**

The Philadelphia Sketch Club's  
158th Anniversary Gala



**The Philadelphia Sketch Club's  
158th Anniversary Gala**

**Saturday, October 6th, 2018  
6 to 10 PM**

*Honoring Patrick Connors,  
Paul DuSold &  
Christine Lafuente*

Medal Presentation, Live Art Auction,  
Silent Auction, Cocktails, Buffet



for more information and  
to buy tickets visit  
[www.sketchclub.org](http://www.sketchclub.org)  
or call 215.545.9298

Gallery hours: Wednesday, Friday, Saturday, Sunday: 1 PM to 5 PM

June 2018

## Sketch Club Activities

### Coming in July: 1st Annual Summer Urban Plein Air Event and Exhibition (River to River)

July 25th – August 15th

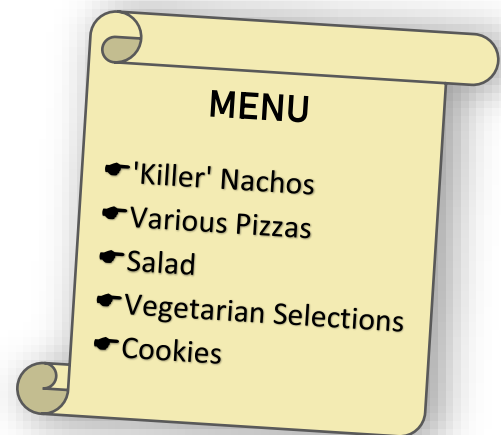
Open Unjuried Show - Co-Chairs: Bhavisha Patel & Robert Bohne

- Online Registration: May 1 - June 30, 2018 at midnight
- Online Submission: July 1 - July 17, 2018 at midnight
- Delivery: Fri July 20, Sat July 21, 2018, 1-5 PM

Sponsor Prizes: Sun Jul 22, 2018 11-2 PM Reception: Sun Aug 5, 2018, 2-4 PM Pickup: Fri Aug 17, Sat Aug 18, 2018, 1-5 PM

### Annual Meeting and Dinner Friday May 11th, 2018

June 8th is our PSC's Annual Pizza night under the stars! This year, dinner will be preceded by 'Killer' Nachos (featuring crisp tortillas w/Monterey Jack and Colby cheddar cheese, olives, peppers, onion served with sour cream, salsa and jalapeno peppers) followed by several selections of pizzas and a tossed salad from our caterer, Pizzeria Cappelli Brothers located at 209 South 13th Street, Philadelphia, PA - take out only. There will be vegetarian selections available and cookies for dessert.



**The deadline for RSVPs:** Wednesday, June 6th at Noon. You can email [executivedirector@sketchclub.org](mailto:executivedirector@sketchclub.org), or call 215-545-9298. Dinner Open to the Public [executivedirector@sketchclub.org](mailto:executivedirector@sketchclub.org)

#### AGENDA

- 5:30- Social Period Begins
- 6:30- Presentation to be announced
- 7:15- Dinner

#### DINNER

- Members - \$16
- Guests - \$18

## Sketch Club Activities

**ATTENTION ALL MEMBERS! HELP WANTED FOR EXHIBITIONS!!**

Gallery Sitting - for 4 hours on a Saturday or Sunday. Usually meet visitors to the exhibitions, Work on your own art in the large gallery space.



Hanging an exhibition - Usually about four people are needed to hang each exhibition.

Delivery and Pickup - Usually only one person is needed for each job.

Currently about 10 members are doing the exhibition work for the club. We have 200 active members. There are simply not enough volunteers to keep the gallery open on weekends which means visitors will not be able to view the exhibits on a Saturday or Sunday. **THIS IS CRITICAL!** Please think about your commitment to the club. A commitment of 8 hours a year would help to keep the gallery open.

This is one of the best ways to support the PSC. Please consider helping keep the first art club in America alive!!

Contact Jackie Barnett at: [jbarnett12@verizon.net](mailto:jbarnett12@verizon.net) or call 267 690 2233

Thanks to PSC member volunteer **Jackie Barnett** for organizing and coordinating PSC volunteers!



Gallery hours: Wednesday, Friday, Saturday, Sunday: 1 PM to 5 PM

June 2018

## Sketch Club Activities

### Critique Night – Next Meeting: June 20, 2018

#### Open to PSC Members and Non-Members

RSVP to **Michelle Lockamy** at 215-545-9298 or  
[executivedirector@sketchclub.org](mailto:executivedirector@sketchclub.org)

Critique Night is held in the Library of the Sketch Club every third Wednesday beginning at 7 PM. Bring work you've finished, work in progress, or just sketches for work you're planning! Photos, digital work, drawings, all mediums are welcome; we can project digital images on a screen for review, so you have the option to show work that may be too big or too heavy to transport to the Club. There is no one individual directing the critique, just your fellow artists and peers. Facilitated/monitored by **Rich Harrington**, PSC President

Thanks to PSC member volunteer **Rich Harrington** for organizing and monitoring this event



### Annual Meeting and Dinner Friday June 8th, 2018

June 8th is our PSC's Annual Pizza night under the stars! This year, dinner will be preceded by 'Killer' Nachos (featuring crisp tortillas w/Monterey Jack and Colby cheddar cheese, olives, peppers, onion served with sour cream, salsa and jalapeno peppers) followed by several selections of pizzas and a tossed salad from our caterer, Pizzeria Cappelli Brothers located at 209 South 13th Street, Philadelphia, PA - take out only. There will be vegetarian selections available and cookies for dessert.

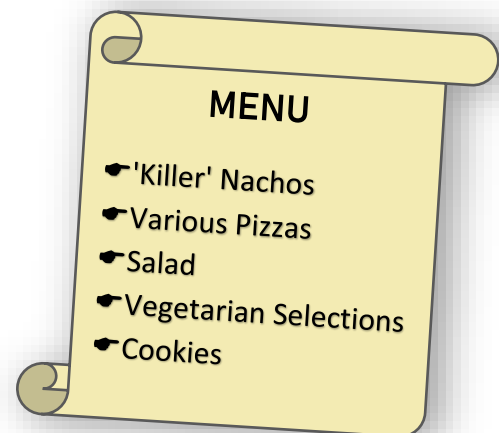
**The deadline for RSVPs:** Wednesday, June 6th at Noon. You can email [executivedirector@sketchclub.org](mailto:executivedirector@sketchclub.org), or call 215-545-9298.  
Dinner Open to the Public [executivedirector@sketchclub.org](mailto:executivedirector@sketchclub.org)

#### AGENDA

- 5:30- Social Period Begins
- 6:30- Presentation to be announced
- 7:15- Dinner

#### DINNER

- Members - \$16
- Guests - \$18

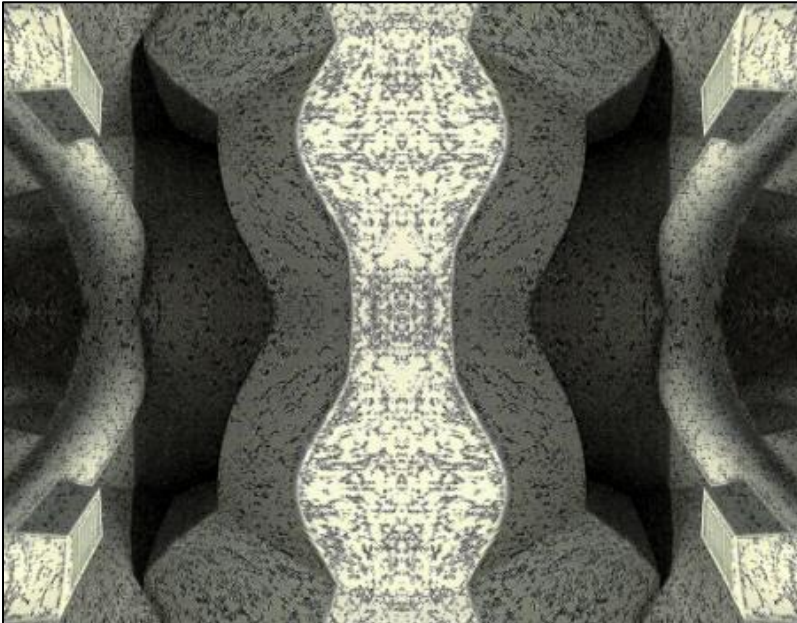


Gallery hours: Wednesday, Friday, Saturday, Sunday: 1 PM to 5 PM

June 2018

## Sketch Club Activities

Photo Circle— **Next Meeting: June 14, 2018 from 6:30 to 8:30 PM**



We will discuss new group activities and possibilities for expansion. The Photo Circle meets every 2<sup>nd</sup> Thursday at 6:30 PM. You can contact Steve anytime at [si22@drexel.edu](mailto:si22@drexel.edu) or 215-300-9192 (cell). **Steve Iwanczuk**, Photo Circle Monitor and Member of Philadelphia Sketch Club Board of Directors.

Thanks to PSC member volunteer **Steve Iwanczuk** for organizing and monitoring this event.

**Did you know?** Elizabeth H. (Betty) MacDonald was the first woman President of the Sketch Club, being elected in 1994 and again in 1995.



Gallery hours: Wednesday, Friday, Saturday, Sunday: 1 PM to 5 PM

June 2018

## Sketch Club Activities

### ARTISTS of the Philadelphia Sketch Club SHOW THEIR WORK at the Old City Jewish Art Center



"The Artists" © by Marilee Morris – from left Bob Mezey, Richard Alliger and Joe Mesaros

Exhibit: The Old City Jewish Art Center  
119 North 3rd St., Philadelphia, PA 19106

*From June 1 (opening reception 5 pm,  
Shabbat Dinner 9 pm) to June 30, 2018*

Gallery Hours: Thursdays & Fridays 4 – 7 pm,  
Saturdays & Sundays 11 am - 6 pm.

OCJAC: A house of fine art and spiritual discovery  
OCJAC.org or 215-627-2792

PSC: Since 1860, artists helping artists and inspiring  
the love of art - sketchclub.org or 215-545-9298

Thanks to PSC member volunteer **Bill Kosman** for organizing this event?

Gallery hours: Wednesday, Friday, Saturday, Sunday: 1 PM to 5 PM

June 2018

## Art Natters: Members News

The Philadelphia Sketch Club has a new exhibition opportunity! PSC Members are invited to exhibit their work at the [Old City Jewish Art Center](#) from June 1st to June 30th. This exhibition is a collaboration of both organizations. It will be curated by Bill Kosman of the Sketch Club and Rabbi Zalman Wirchberg, Gallery Director of OCJAC.

The deadline for online submissions is Tuesday, May 22, 2018 at midnight. For more exhibition details, get your copy of the prospectus here: [PSC Exhibition at the Old City Jewish Art Center](#)

Enter your work online here: [EntryThingy](#)



"The Artists" by Marilee Morris - From Left: Bob Mezey, Richard Alliger and Joe Mesaros

## Alan Fetterman appointed the First Bucks County Artist in Residence

"As a lifelong Artist and humanitarian I want to thank the Bucks County Commissioners: Robert G. Loughery Commissioner Chairman, Charles H. Martin Commissioner Vice-Chairman and Diane M. Ellis-Marseglia, LCSW Commissioner in appointing me as holding the honor of the first "Bucks County Artist In Residence". In this resolution comes my mission to officially support the county in the areas of Arts and Culture and to further support and enhance our community's strength as the bright and healthy region that it is. Thank you."

<http://www.buckscountycouriertimes.com/news/20180411/alan-fetterman-tapped-to-be-bucks-countys-first-artist-in-residence>



Gallery hours: Wednesday, Friday, Saturday, Sunday: 1 PM to 5 PM

June 2018

## Art Natters: Members News

PSC member **Annie Stone** is part of the group exhibit, "Second Lives," at DaVinci Art Alliance, Philadelphia, PA, June 20-30, 2018.

The opening reception will be held:

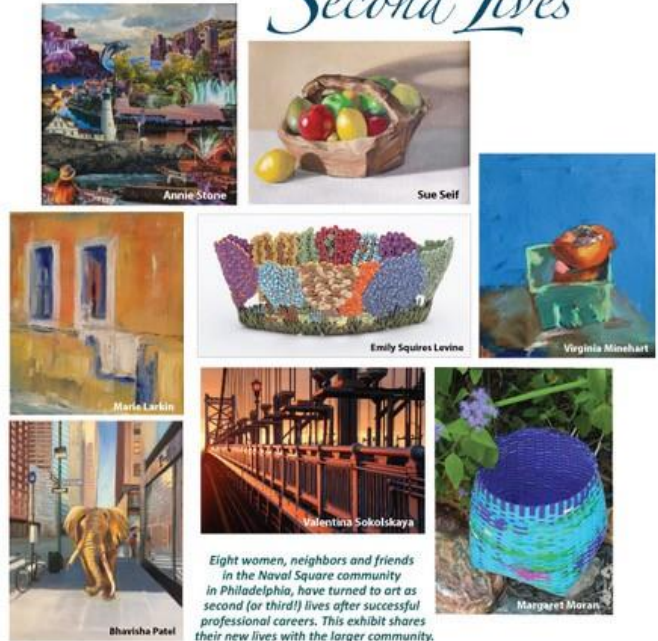
- Wednesday, June 20, 2018, 6pm to 8pm
- Free & open to the community
- Light refreshments will be served
- DaVinci Art Alliance, 704 Catherine St, Philadelphia, PA 19147

Annie is also part of the exhibit, "Art is Ageless," at NewCourtland Senior Center, Philadelphia, PA.

The grand opening reception will be held: Monday, June 4, 2018, from 10am to 1pm, the Grand Opening of the NewCourtland Senior

Community at St. Bart's: The Apartments at St. Bart's 5364 Jackson Street, Philadelphia, PA 19124

DaVinci Art Alliance presents  
A Group Exhibit of Women Artists  
*Second Lives*



Eight women, neighbors and friends in the Naval Square community in Philadelphia, have turned to art as second (or third!) lives after successful professional careers. This exhibit shares their new lives with the larger community.

**June 20-30, 2018**

Please join us at the opening reception:  
**June 20, 2018, 6-8 pm**

Gallery hours: Wednesday 6-8 pm, Saturday and Sunday 1-5 pm

DaVinci Art Alliance, 704 Catherine St., Philadelphia PA 19147  
215.550.1447 info@daviniciartalliance.org

Light refreshments will be served.

The collaboration collage "Into the Funky Forest" from Annie's NewCourtland Senior Community Fellowship will be featured.

Annie's website is:

<https://www.anniestonenaturecollage.com/>



**Into the Funky Forrest**



Gallery hours: Wednesday, Friday, Saturday, Sunday: 1 PM to 5 PM

June 2018

## Art Natters: Members News

Sketch Club Member **Brenda L Bechtel** has her Oil on Linen, "Blue Skies Smiling at Me" included in the New Haven Paint & Clay Club 117th National Exhibition Juried by D. Samuel Quigley, Director, Lyman Allyn Art Museum, New London, Connecticut through June 2. The Hudson River Valley Art Association 85th Exhibition, this year hosted by the recently, historically remodeled Lyme Art Association, est 1921 includes "Papyrus with Elephant Ears" Oil on Linen, June 15 - August 3.



**Magical Fantasy**



Here is a recent work-up by PSC member **Diane Hark** while waiting for a class to begin. Use of perspective and design skills and balance are in play. You may recognize one of our favorite Philadelphia icons.

Gallery hours: Wednesday, Friday, Saturday, Sunday: 1 PM to 5 PM

June 2018

## Art Natters: Members News

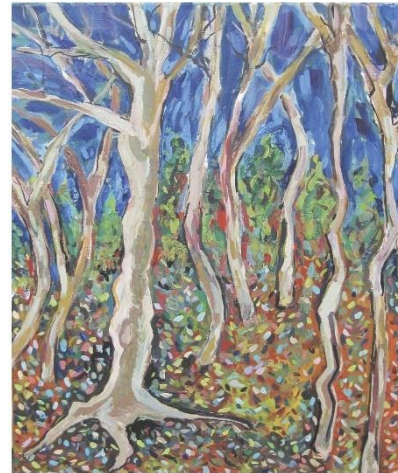
PSC member **Marie Davis Samohod's** upcoming exhibition at the Swarthmore Friends of the Arts

**SWARTHMORE**  
Friends of the Arts

Presents:

"The Language of Color and Line"

by: Marie Davis Samohod



**June 6th - 30th**

Artist's Reception, Public invited  
Friday June 8th from 5-7pm

121 Park Avenue, Swarthmore  
[swarthmorearts.org](http://swarthmorearts.org)

**Did you know?** Thomas Anshutz told members in the mid-1890s that if they brought in a canvas 22" x 16" he would paint their portraits and hang them up at the Club. Forty-three members did so and the portrait of the Club's first President, George F. Bensell who died in 1879, was painted from a photograph. These portraits now hang in the Club's library.

Gallery hours: Wednesday, Friday, Saturday, Sunday: 1 PM to 5 PM

June 2018

## Art Natters: Members News

PSC member **DoN Brewer** received his certificate from the Barnes - de Mazia education program at The Barnes Foundation on the Parkway on May 8th, 2018. For more than two years DoN has immersed in the art collection, studying the plastic elements of art, traditions of Western European art, artists Charles Demuth and Marsden Hartley and American Modernism, and an intensive study of French painter Pierre - Auguste Renoir and his paintings in the Barnes collection.

As the recipient of the first scholarship certificate, DoN gratefully thanks William M. Perthes, director of education and public outreach, the scholarship committee at the Barnes, Robert Bohné, artist and mentor for inspiration and plastic argument, and artist Bill Scott for sharing deep thoughtful and knowledge about Renoir and the Impressionists; this team of artists and educators were the wind at my back.

PSC member **Patrick Connors'** painting "Schuylkill River Viaduct, View from East Bank, Clearing Fog," will be featured with about seventy-five other artworks in the Woodmere Art Museum 77th Annual Juried Exhibition. The exhibition was juried by Syd Carpenter.



Schuylkill River Viaduct, View from East Bank, Clearing Fog

The show's opening reception is June 2, noon to 4 PM and a gallery talk will be given by juror Syd Carpenter on June 9, 3 - 5 PM. The exhibit continues through to September 2. For more information:

<https://woodmereartmuseum.org/experience/exhibitions/the-woodmere-annual-77th-juried-exhibition>



Gallery hours: Wednesday, Friday, Saturday, Sunday: 1 PM to 5 PM

June 2018

## Art Natters: Members News

PSC member, **Mike Budden** has won a few new awards recently. Best Landscape in the Sketch Club's Small Oils Show 2018, Award of Merit in the NOAPS Spring Online Show.

He is interested in painting partners for the upcoming Clubs Plein Air Paint Out .

PSC member **Lois Schlachter** - will be exhibiting her work at CCAA: Exton Square Studio Gallery, June 2 - July 28, 2018, Reception: Saturday, June 2, 1-3pm - Exton Square Studio Gallery, 260 Exton Square Pkwy, Exton Square Mall, 1st Level by Boscov's, Exton, PA 19341. Gallery Hours 11am - 3pm, Wednesday thru Saturday.

To see Lois' work visit her website at [www.fineartbylois.com](http://www.fineartbylois.com)

Sketch Club member, **Sally Eisenberg**, will be showing her Smoothie Art at La Va Cafe, 2100 South Street in Philadelphia from April 10th - June 8th.



Gallery hours: Wednesday, Friday, Saturday, Sunday: 1 PM to 5 PM

June 2018

## Sketch Club Open Workshop Schedule

All workshops are open to the public. There is no need to register before attending. You do NOT have to be a member of the Philadelphia Sketch Club to participate in the workshops. Our workshops are open to anyone who is interested in drawing, painting or printmaking. All skill levels are welcome. Fees: Model workshops: \$8/session members, \$9/session for non-PSC members; Printmaking workshop: \$10/session; All workshops \$6 for full-time students. Monitored by PSC members.

Life Model	Costumed Model	Printmaking
<p>Mondays – Extended pose (multi-session): 6:30 PM-9:30PM</p> <p>Monitors: Robert Bohne, Vince Docktor, Dan Kuetemeyer</p> <p>Tuesdays – Extended pose: 12:00 PM to 3:00 PM Monitor: Jacqueline Barnett</p> <p>Wednesdays – Extended pose: 6:30 to 9:30 PM Monitor: Vince Docktor</p> <p>Saturdays – Extended pose: 9:30 AM to 12:30 PM Monitor: Vince Docktor</p>	<p>Thursdays</p> <p>Extended pose</p> <p>12:00 PM to 3:00 PM Monitor: Bob Bohne.</p>	<p>Tuesdays</p> <p>10:00 AM to 2:00 PM Monitor: Elizabeth H. MacDonald</p>

**Please Note: Those who use oil paints should bring their own container(s) to remove used solvents. Odorless solvents only.**

Thank you to all the PSC members who donate their time and expertise to make these workshops available to PSC members and the Philadelphia art community.

## Opportunities/Notices

As a courtesy to our non-PSC-member friends, in support of the Philadelphia artist community, we publish your notices, etc., free of charge. However, contributions to the PSC are always welcome.

[Contribute to the Sketch Club Here](#)

### *Drawing from Nature at the Raymond Farm Center July 14th 2018*

The Raymond Farm Center, a regional art & design center in New Hope, has extended a special invitation to the Philadelphia Sketch Club to participate in the Drawing From Nature field sketching day.

The event will take place on Saturday, July 14th, from 1 to 4 PM

The Raymond farm center is a 120-acre farm with 18th & 19th C buildings, ponds, woodlands, lots of chickens, and soon horses. You can see more about us at <http://www.raymondfarmcenter.org>

The Center will provide refreshments and have sketch materials on hand for those younger people who may need.

Contact John DeFazio at [john@raymondfarmcenter.org](mailto:john@raymondfarmcenter.org) if you are interested in attending, or have any questions.

### Ellen Cooper Portrait Workshop:

Intensive Five-day Portrait workshop  
July 15-20, 2018

Portrait artist, **Ellen Cooper**, conducts portrait workshops for professional and amateur artists who want to develop or advance their painting and drawing skills. Workshops are focused on painting and drawing from the live model and include group and one on one instruction, demos, and discussion. Classes are limited in size creating a more intimate learning environment and allowing for personal interaction and attention to each student.

Ellen is a Signature Member of the Portrait Society of America. Her portraits hang in the collections of government offices, universities and many private homes. Her work has won many national and international honors and awards, and she has been featured in *International Artist*, *The Art of the Portrait*, *Artist's Magazine* and *American Art Collector*.



Gallery hours: Wednesday, Friday, Saturday, Sunday: 1 PM to 5 PM

June 2018

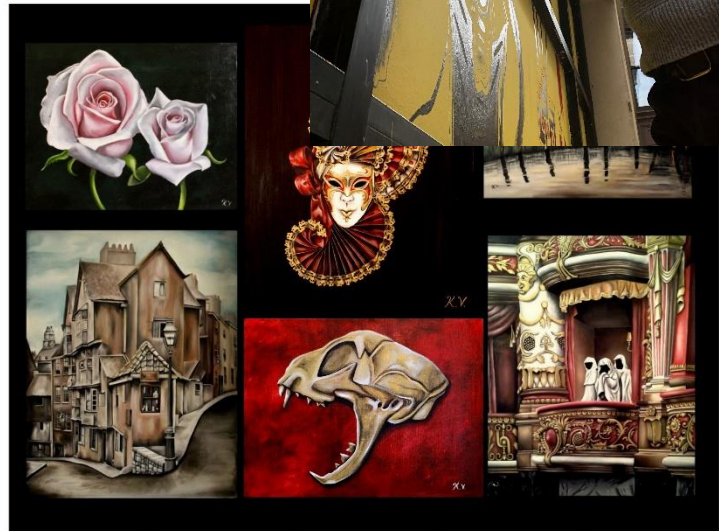
## Opportunities/Notices



**Ryne Fuller** has recently completed a mural at Elixir Coffee in downtown Philly! It will be up for the next three months if you get a chance to stop by and take a look, its at 207 S Sydenham St. Since completing the mural I've been working on large scale oil paintings in my studio that I'm pretty excited about. Lastly, I'm stoked that its Spring!



Emerging artist **Kate Viola** will be hosting a solo exhibit at the Bucks County Visitor Center in Bensalem, PA entitled, An Eclectic Trove: Paintings by Kate Viola from May 6th through June 22nd, 2018. Come see almost two dozen diverse and unique paintings each priced to sell. A public, opening reception with complimentary refreshments will be held on Sunday, May 6th from 1:00pm-3:00pm.



## An Eclectic Trove: Paintings by Kate Viola

May 6th-June 22, 2018  
Bucks County Visitor Center  
3207 Street Road  
Bensalem, PA 19020

Opening Reception: May 6th, 2018  
from 1pm-3pm  
Complimentary Refreshments

Gallery hours: Wednesday, Friday, Saturday, Sunday: 1 PM to 5 PM

June 2018

## Opportunities/Notices

### 2018 CFEVA Art Party: CFEVA\*35

Friday, June 8, 6:30–8:30pm

**RSVP by June 1**

[The Sonesta Hotel](#), 1800 Market St., Philadelphia, PA 19103

[Click for Details](#)

Co-Chairs Sam Duplessis, Daniel Krewson, and Phillipa Ashby invite you to join us as we pay tribute to the thousands of artists who have come through CFEVA's doors since we were founded by the visionary Felicity R. "Bebe" Benoliel in 1983.

MEET CFEVA artists.

SEE them at work.

ACQUIRE the newest addition to your collection from our 35th Anniversary exhibition and Art Sale.

BID on luxe auction items.

CREATE lasting relationships with our city's vibrant creative community.

All proceeds benefit CFEVA's career development and community outreach programs.

### BEST IN DESIGN: Ready to Scale Open Call

**Entries Due: Friday, June 15, 2018**

[Click for Details](#)

[DesignPhiladelphia](#) is excited to announce its first ever "Best in Design" competition, a new challenge that asks regional designers and design companies to submit innovative, high quality products that make life better. We are looking to support designers and companies that are ready to grow and promote products that reflect the business's scalability.

The "Best in Design" competition is looking to propel Philadelphia's best design businesses/designers forward by providing robust local and international exposure. Finalists will exhibit work at DesignPhiladelphia 2018. The winning design will be awarded with a cash prize of \$5,000. All finalists will be covered in a national design publication and gain exposure to a loyal audience of design enthusiasts and aficionados.

### Art Ability Annual Exhibition and Sale: Call for Art

**Entries Due: Wednesday, July 18, 2018**

[Click for Details](#)

[Bryn Mawr Rehab Hospital's Art Ability program](#) is now accepting artist entries for the 2018–19 Exhibition and Sale. This marks the 23rd year of the international juried exhibition and sale of art and fine crafts by artists with disabilities.

Mark your calendar for November 4, 2018 – January 27, 2019. Visit, view and purchase artwork from the Annual Art Ability Exhibition and Sale beginning the first Sunday in November. The exhibit officially opens with a Preview Reception on Saturday, November 3, 2018.

Art Ability is dedicated to creating community awareness of people with disabilities, and encouraging people with disabilities to reach beyond their limitations and find fulfillment and inspiration through art.

## Membership

### Recent New PSC Members

The Sketch Club welcomes new members recently approved by the Board of Directors.

- Robert Finn William Smith

Current Sketch Club members can review new member applications at: <http://sketchclub.org/member-applications/>. The members only section and documents are password protected. If you've forgotten the password, please contact Ken Weiner at: [membership@sketchclub.org](mailto:membership@sketchclub.org).

### Not a PSC Member?: Join Now!

If you're reading this edition of the Portfolio and you're not a member of the PSC, you should consider joining the more than 200 other Philadelphia area artists who have. The PSC is one of the most active visual art venues serving center city Philadelphia. The PSC is a hands-on organization that offers its members the opportunity to participate in all aspects of creating and presenting work to the public. It presents over 20 scheduled group and solo exhibitions annually and offers a wide range of daily workshops. [Get info and an application here](#).

If you are a member of the PSC, please feel free to share the Portfolio with your artist friends and encourage them to become members.

### Membership Renewal

You can check the status of your membership by going to the Current Members page on the PSC web-site: <http://sketchclub.org/sample-page/memberspace/>. All current members are listed. An asterisk (\*) means that the membership has expired but is within the 60-day grace period for renewal. Names in red are active links to the individual's web site.

Renew Now! <http://sketchclub.org/annual-dues-payment/>

If you have any questions about your membership, please don't hesitate to contact us at [membership@sketchclub.org](mailto:membership@sketchclub.org) or call the office: 215-545-9298.

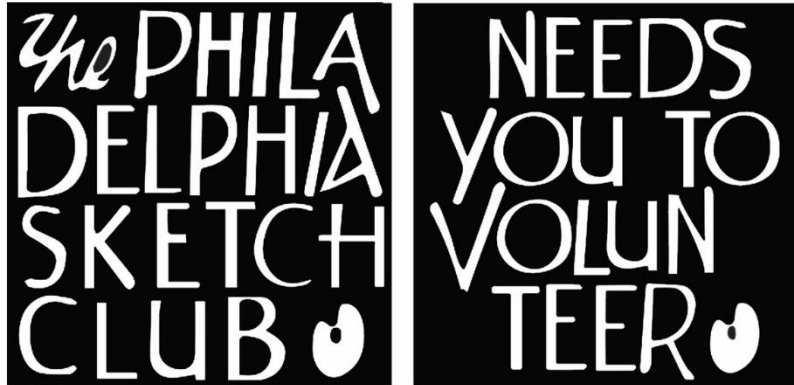
**Did you know?** Colonel Frederick L. Pitts joined the Club in 1882 and had the distinction of serving in the Confederate Army. In a discussion with fellow Club member Charles M. Burns one day in the Club's library, they learned they had fought against each other in the same battle.



## Volunteer

### We Need You!

The Philadelphia Sketch Club is managed entirely by volunteers except for the gallery manager, housekeeping, and bookkeeper.



The PSC always needs volunteer members. Volunteering is one of the most important aspects of being a Sketch Club member and it is the one of the best ways to take advantage of the PSC. You'll be working with colleagues who share the same interests and helping the PSC provide unique services to the visual arts community. Sign up for an activity today.

Here are some of the activities volunteers perform:

- Chair exhibitions
- Assist in hanging exhibitions
- Covering exhibition drop-offs and pick-ups
- Monitor workshops
- Assist with presentations
- Serve on the Board of Directors
- Serve as Key Circle volunteers
- Publish the Portfolio
- Manage the PSC web site
- Gallery coverage
- Graphics for Portfolio, PSC web site, social media
- Assist in every aspect of managing the club and providing member services

To get involved, contact:

Jackie Barnett

Volunteer Coordinator

Philadelphia Sketch Club

[jbarnett12@verizon.net](mailto:jbarnett12@verizon.net)

Gallery hours: Wednesday, Friday, Saturday, Sunday: 1 PM to 5 PM

June 2018

## Support the Sketch Club

### Contribute

Please consider making your tax-deductible contribution now. These funds will be put to good use providing enhanced services to our members and friends.

Membership dues cover only a small portion of the PSC's operating expenses. Competition for funding for arts organizations like the Sketch Club is increasingly competitive and total funding for the arts is shrinking. Your additional support will keep the PSC an active support for visual artists in the Metropolitan Philadelphia area. The Philadelphia Sketch Club is an IRS designated 501(c) (3) non-profit organization which allows your donations to be tax deductible.

You can call the office at 215-545-9298, mail checks to the Sketch Club or visit the Contribute page of our Website.

Visit our **Contribute** page of our website to give online at:

<http://sketchclub.org/support-us/>

You can also support the PSC on an ongoing basis when you shop on Amazon. Go to:

<http://smile.amazon.com/> and enter the Philadelphia Sketch Club in the Pick your own charitable organization box.

Your support makes it possible for the PSC to continue providing ongoing daily workshops and numerous annual gallery exhibitions.



Sketch Club Members receive a  
25% discount at Merion Art.  
Use promo code "PSC"  
online at [www.merionart.com](http://www.merionart.com)

"Our staff of experienced artists, custom framers, and designers can answer your art materials questions and help to creatively solve all your artistic problems. Stop in our store for personalized friendly attention, or go to [merionart.com](http://merionart.com) for access to thousands of quality art products!"

Monday - Friday: 8:30am - 6:00pm  
Saturday: 9:00am - 5:30pm  
Sunday: 12:00pm - 5:00pm

**Merion Art & Repro Center**  
17 West Lancaster Avenue  
Ardmore, PA 19003

(610) 896-6161 - Phone  
(610) 896-7781 - Fax

Gallery hours: Wednesday, Friday, Saturday, Sunday: 1 PM to 5 PM

June 2018

## Support the Sketch Club

# PHOTOLounge

The **PHOTOLounge** supports the Philadelphia Sketch Club and its members:

**Sketch Club Members receive a 15% discount at PHOTOLounge.**

**Use online promo code "sketch".**

The PHOTOLounge is located at 1909 Chestnut St. Philadelphia PA 19103.

For nearly 20 years, PHOTOLounge's focus has been the simple idea that pictures should be beautiful, affordable, and long lasting. We're a very adept photo lab with diverse services from iPhone printing to shoebox scanning. You can bring us film for processing, and also order prints online, or from the App. Come in and print your world.

**Sketch Club Members receive a 15% discount at PHOTOLounge.**

**Use online promo code "sketch".**

**267-322-6651 – [www.myphotolounge.com](http://www.myphotolounge.com)**

## Sketch Club members receive 20% discount



**Canal Frame-Crafts  
Gallery**

Framing Family Treasures for over 20 Years



*We offer a variety of framing materials and techniques including:*

- Archival / conservation treatment • Specialty mats (Linen, Suede, Silk)
- Stretching / Blocking of needleart and oils
- 1000's of moulding choices • 22 karat finished corner frames • Memorabilia framing
- Custom toning / coloring • Decorative mat cuts • French matting • Fillets
- Mirrors • Shadowboxing • Dry Mounting

**www.CanalFrame.com • CanalFrame@comcast.net • 215-493-3660**  
**1093 General Greene Road, Washington Crossing, PA 18977**



Gallery hours: Wednesday, Friday, Saturday, Sunday: 1 PM to 5 PM

June 2018

## Support the Sketch Club

### Like, Link & Share

If you're not following the Philadelphia Sketch Club on Facebook re-tweeting Sketch Club tweets yet, it's time that you did. We have well over 2000 Facebook followers. Get the word out about the Sketch Club. Please click the like button and share your comments and invite your friends to like our page.

Follow @PhilaSketchClub on Twitter, we have almost 400 followers. Please click the heart button and re-tweet our announcements.

Include links on your website, blogs and social media to The Philadelphia Sketch Club to increase traction across social media platforms.

Follow us on Facebook, Twitter and Instagram now!

Thanks to Don Brewer and Michelle Lockamy for managing PSC social media sites.



## Member Classifieds

### Seeking Framers

Sketch Club members frequently ask about framing services. If you wish to provide framing services to PSC members, please contact the PSC at [info@sketchclub.org](mailto:info@sketchclub.org) or call the PSC office: 215 545-92908



Gallery hours: Wednesday, Friday, Saturday, Sunday: 1 PM to 5 PM

June 2018

The Portfolio: The newsletter of the Philadelphia Sketch Club is published monthly. Editor: Ken Weiner; Technical support and Web Master: Ken Weiner. Send your member news, announcements and corrections to [portfolio@sketchclub.org](mailto:portfolio@sketchclub.org). The due date for all materials is one week before the end of the month.

Back issues of the Portfolio are available at: <http://sketchclub.org/portfolio-archive/>

Thanks to PSC member volunteer **Ken Weiner** for his ongoing support of Sketch Club technology and communications functions.

#### **The Philadelphia Sketch Club**

235 S Camac Street  
Philadelphia, PA 19107  
(215) 545-9298  
<http://sketchclub.org/>  
[executivedirector@sketchclub.org](mailto:executivedirector@sketchclub.org)

Gallery Manager: Michelle Lockamy

#### **Officers:**

- President: Richard Harrington
- Vice President: Kenneth Weiner
- Secretary: Fran Carter
- Treasurer: William Patterson

#### **Board of Directors**

- Elise Anzini
- Jacqueline Barnett
- Vincent Docktor
- Stephen Iwanczuk
- William Kosman
- Kevin Myers
- Charles F. Tarr
- Joe Winter