

Gallery hours: Wednesday, Friday, Saturday, Sunday: 1 PM to 5 PM

October 2018



Nancy Herman

## This Month's Portfolio

2018 Main Gallery Schedule	2
See Gala Information and Live Auction Images	2
2018 Stewart Gallery Schedule	4
Sketch Club Activities	6
Art Natters: Members News	14
Sketch Club Open Workshop Schedule	20
Opportunities/Notices	21
Membership	23
Volunteer	24
Support the Sketch Club	25
Member Classifieds	27

Send your member news, announcements and corrections to [portfolio@sketchclub.org](mailto:portfolio@sketchclub.org). The deadline for ALL submissions is 1-week before the end of the month.

Reminder: It's never too late. You can always renew your membership  
You may pay online at <http://sketchclub.org/annual-dues-payment/>  
or mail your check to:  
The Philadelphia Sketch Club  
235 S. Camac St.  
Philadelphia, PA 19107  
For questions please contact the Gallery Manager at 213335-545-9298 or email: [executivedirector@sketchclub.org](mailto:executivedirector@sketchclub.org)  
Late Breaking News – See items that were submitted after the publication date. Go to: [info@sketchclub.org](mailto:info@sketchclub.org)  
The PSC general email is: [info@sketchclub](mailto:info@sketchclub.org)

Gallery hours: Wednesday, Friday, Saturday, Sunday: 1 PM to 5 PM

October 2018

## 2018 Main Gallery Schedule

[See the 2018 Exhibition Schedule](#)

[Important Dates for all PSC Activities](#)

# The 158th Anniversary Gala

[See Gala Information and Live Auction Images](#)



**OCTOBER 6th, 2018**  
**The Philadelphia Sketch Club's 158th Anniversary Gala**  
*Honoring*  
**Patrick Connors**  
**Christine Lafuente**  
**Paul DuSold**  
*For tickets and more information visit*  
[www.sketchclub.org](http://www.sketchclub.org)

**There's still time to [Purchase Tickets](#)**

Tickets can be purchased online, by sending your check to the Philadelphia Sketch Club, or by calling our office at 215-545-9298.

**Entertainment: The Sketchtones – dance to rock standards**

**See more in the PSC Activities Section below**





Gallery hours: Wednesday, Friday, Saturday, Sunday: 1 PM to 5 PM

October 2018

## 2018 Main Gallery Schedule

### Coming Next in the Main Gallery

the PHILA  
DELPHIA  
SKETCH  
CLUB

## Phillustration 10

### Call For Entries

**The Philadelphia Sketch Club's  
10th Annual Open Juried Exhibition  
of Illustration  
November 7th -23rd 2018  
Entry Deadline: Midnight Oct 14, 2018  
[www.sketchclub.org](http://www.sketchclub.org) for entry info and prospectus  
Prizes sponsored by [artistacon.org](http://artistacon.org)**

Illustration by David Brinley • [davidbrinley.com](http://davidbrinley.com)

Gallery hours: Wednesday, Friday, Saturday, Sunday: 1 PM to 5 PM

October 2018

## 2018 Stewart Gallery Schedule

### 2018 Annual Members Exhibition and Gala 158<sup>th</sup> Anniversary live auction artwork.

September 24 – October 25

Reception: Sun Oct 21 12-4 PM





Gallery hours: Wednesday, Friday, Saturday, Sunday: 1 PM to 5 PM

October 2018

## Stewart Gallery: Reserved for Gala Activities



**Exhibition space in the Stewart Gallery is available for PSC Members!**

Reserve the gallery by contacting our  
Exhibition Coordinator:  
[exhibitions@sketchclub.org](mailto:exhibitions@sketchclub.org)

The space is \$150 for a month. Members can show once in the Stewart Gallery per year.

[See the 2018 Exhibition Schedule](#)  
[Important Dates for all PSC Activites](#)

Gallery hours: Wednesday, Friday, Saturday, Sunday: 1 PM to 5 PM

October 2018

## Sketch Club Activities



### 158th Anniversary Gala - October 6, 2018 - 6 PM to 10 PM

The Philadelphia Sketch Club will be hosting its 158th Anniversary Gala on Saturday, October 6, 2018, from 6 to 10 PM. One of the highlights of the event is that we will be honoring three of the nation's top artists for their achievements in the visual arts. Pictured below are the three honorees: Patrick Connors, Christine Lafuente and Paul DuSold.

We will be presenting each with the Philadelphia Sketch Club Medal. This will be a fun and highly visible event. It will bring together our members, patrons, supporters, friends, sponsors and neighbors. It will feature a live art auction, silent auction, hors d'oeuvres, buffet dinner, cocktails and music. It is critical that this event be a success as it is a significant fund-raising vehicle for the Sketch Club.

Help Support America's oldest artists club through your participation in this fun event. To buy tickets, visit <http://sketchclub.org/sketch-club-gala-158/> or call 215-545-9298.

We have the backing of many important members of the artistic community. The Honorary Gala Committee for the event is as follows:

#### Philadelphia Sketch Club 158th Anniversary Honorary Gala Committee

David R. & Holly Trostle Brigham (David is President and CEO of PAFA and Holly is an Artist); William R. Valerio, Director & CEO, Woodmere Art Museum; Cecelia Fitzgibbon - President, Moore College of Art and Design; Bill Scott - Artist and Member of the Advisory Committee of the Woodmere Art Museum Board of Trustees; Signe Wilkinson - Pulitzer Prize Winning Editorial Cartoonist; Carter Leidy – Artist; Sharon Ewing, Director of Gross McCleaf Gallery; Liz Price - Artist, Art Patron and Former Director the Samuel S. Fleisher Art Memorial; Garth Herrick – Artist; John Thornton - Artist & Videographer; Judith McCabe Jarvis - Artist & Writer; David Weiss, Vice President at Freemans, a specialist on the *Antiques Roadshow* and guest auctioneer for the Live Gala Auction.

The event will be a fun affair where you can socialize with Sketch Club members, members of the Honorary Gala Committee and the three honorees; enjoy the food and beverages and perhaps win one of the ten or so artworks that will be part of our live auction.

Purchase Tickets: <http://sketchclub.org/sketch-club-gala-158/>

Gallery hours: Wednesday, Friday, Saturday, Sunday: 1 PM to 5 PM

October 2018

## Sketch Club Activities

Below are images of some of the artworks that will be in the Live Auction. Images of other artworks, including artworks by the three honorees, will be added to our website and the Portfolio when they are available.

### PHILADELPHIA SKETCH CLUB 158TH ANNIVERSARY GALA OCTOBER 6, 2018, 6 TO 10 PM EXAMPLES OF ARTWORKS FOR LIVE AUCTION



**Christine Lafuente, *Daffodils and Blue Bowl*, oil on mounted linen, 12x9 inches, 2013**



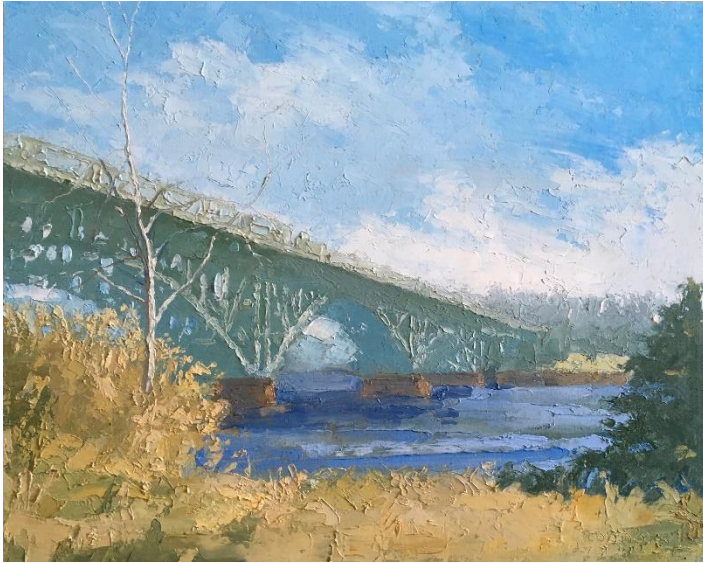
**Cesare A. Ricciardi (1882-1973), *Landscape with Stream*, oil on board, 12x16 inches**



Gallery hours: Wednesday, Friday, Saturday, Sunday: 1 PM to 5 PM

October 2018

## Sketch Club Activities



Patrick Connors, "Strawberry Mansion Bridge, Early March Afternoon," oil on linen, 16x20 inches, 2018.



Vincent Ceglia (1923-2012), *Wandering Light*, acrylic on board, 22x28 inches, 1988



Carl Weber (1850-1921), *Path to the Pond*, Watercolor, 10x16 inches



Gallery hours: Wednesday, Friday, Saturday, Sunday: 1 PM to 5 PM

October 2018

## Sketch Club Activities

### More about the 158th Anniversary Gala – Continued

Purchase Tickets: <http://sketchclub.org/sketch-club-gala-158/>



Oliver Fetterolf Grimley (1920-2013), *Trapped*, 1966, Ink & watercolor on paper, 3.75x11.75 inches



Paul DuSold, *Upsal*, oil on canvas, 8x9 inches, 2015

Gallery hours: Wednesday, Friday, Saturday, Sunday: 1 PM to 5 PM

October 2018

## Sketch Club Activities

### More Live Auction Images



Domenic DiStefano (1924-2011), *Seaside Observers*, watercolor, 14.75x21.75 inches



Frank English (1854-1922), *Neighborly Chat*,  
watercolor, 14.5x22 inches

**Purchase Tickets:** <http://sketchclub.org/sketch-club-gala-158/>



Gallery hours: Wednesday, Friday, Saturday, Sunday: 1 PM to 5 PM

October 2018

## Sketch Club Activities

**No Dinner Meeting this month.**

**Instead:** Attend the 158<sup>th</sup> Anniversary Gala  
Saturday October 6, 2018 - 6 PM to 10 PM



Gallery hours: Wednesday, Friday, Saturday, Sunday: 1 PM to 5 PM

October 2018

## Sketch Club Activities

**ATTENTION ALL MEMBERS! HELP WANTED FOR EXHIBITIONS!!**

Gallery Sitting - for 4 hours on a Saturday or Sunday. Usually meet visitors to the exhibitions, Work on your own art in the large gallery space.



Hanging an exhibition - Usually about four people are needed to hang each exhibition.

Delivery and Pickup - Usually only one person is needed for each job.

Currently about 10 members are doing the exhibition work for the club. We have 200 active members. There are simply not enough volunteers to keep the gallery open on weekends which means visitors will not be able to view the exhibits on a Saturday or Sunday. **THIS IS CRITICAL!** Please think about your commitment to the club. A commitment of 8 hours a year would help to keep the gallery open.

This is one of the best ways to support the PSC. Please consider helping keep the first art club in America alive!!

Contact Jackie Barnett at: [jbarnett12@verizon.net](mailto:jbarnett12@verizon.net) or call 267 690 2233

Thanks to PSC member volunteer **Jackie Barnett** for organizing and coordinating PSC volunteers!



Gallery hours: Wednesday, Friday, Saturday, Sunday: 1 PM to 5 PM

October 2018

## Sketch Club Activities

### Critique Night – October 17<sup>th</sup>, 2018 from 7:00 – 9:00 PM

**Open to PSC Members and Non-Members**

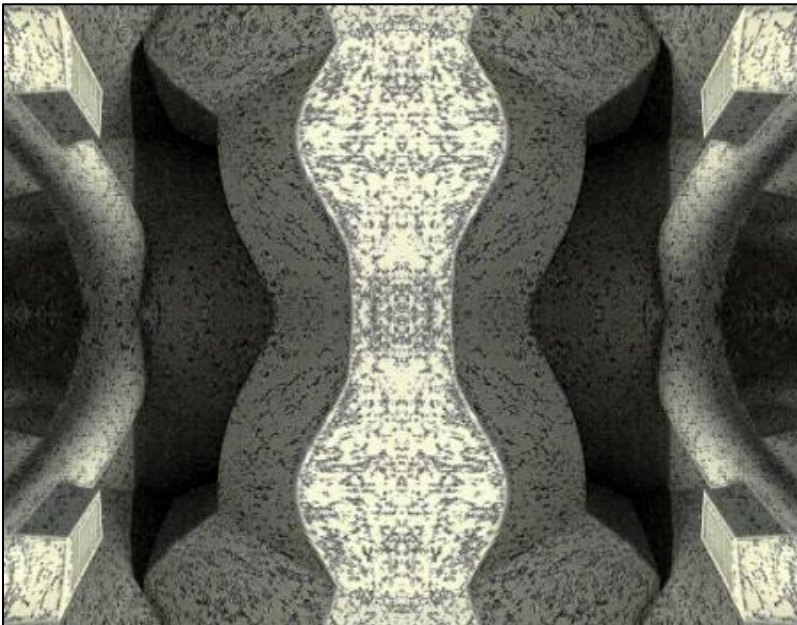
RSVP to **Michelle Lockamy** at 215-545-9298 or  
[executivedirector@sketchclub.org](mailto:executivedirector@sketchclub.org)

Critique Night is held in the Library of the Sketch Club every third Wednesday beginning at 7 PM. Bring work you've finished, work in progress, or just sketches for work you're planning! Photos, digital work, drawings, all mediums are welcome; we can project digital images on a screen for review, so you have the option to show work that may be too big or too heavy to transport to the Club. There is no one individual directing the critique, just your fellow artists and peers. Facilitated/monitored by **Rich Harrington**, PSC President

Thanks to PSC member volunteer **Rich Harrington** for organizing and monitoring this event



### Photo Circle– October 11, 2018 from 6:30 to 8:30 PM



We will discuss new group activities and possibilities for expansion. The Photo Circle meets every 2<sup>nd</sup> Thursday at 6:30 PM. You can contact Steve anytime at [si22@drexel.edu](mailto:si22@drexel.edu) or 215-300-9192 (cell). **Steve Iwanczuk**, Photo Circle Monitor and Member of Philadelphia Sketch Club Board of Directors.

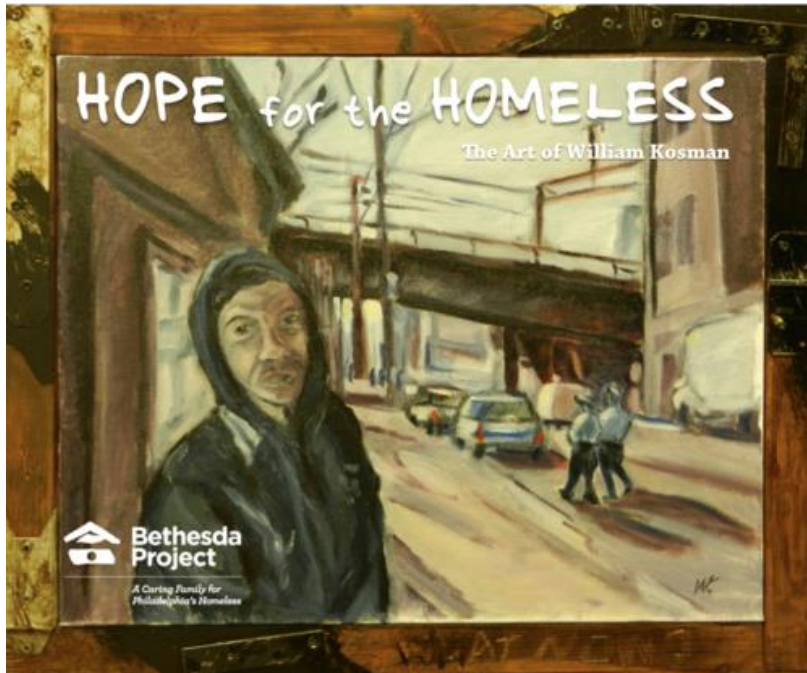
Thanks to PSC member volunteer **Steve Iwanczuk** for organizing and monitoring this event.

Gallery hours: Wednesday, Friday, Saturday, Sunday: 1 PM to 5 PM

October 2018

## Art Natters: Members News

Sketch Club member **Bill Kosman** will be donating his proceeds from an exhibit of his Philadelphia street scenes and Normandy landscapes - kicking off on Oct. 7 in Manayunk - to the Bethesda Project, which helps the homeless.



The exhibit will be at the Manayunk Roxborough Art Center at 419 Green Lane (rear), Philadelphia, PA 19128.

The opening reception is on Sunday, Oct. 7, from 12 pm to 3 pm, and then the gallery will be open Saturday and Sunday, Oct. 13 and 14, from 11 am to 3 pm.

In November, the exhibit will move to the RoxArt Gallery, at 6120 Ridge Ave, with an opening reception on Nov. 7 from 12 pm to 3 pm with weekday hours from 10 am to 6 pm. The Bethesda Project is a Philadelphia homeless services nonprofit that has provided support, shelter and housing for thousands of individuals experiencing homelessness since 1979.

Wayne Art Center Juried Membership Exhibition, Medford Art Center Invitational Exhibition, Willingboro Art Alliance exhibition, Artists Equity Juried Exhibition all are represented by Sketch Club member **Doris Peltzman's** oil paintings. For specific information visit each one's website.



Lilacs – Oil on yupo



## Art Natters: Members News

Sketch Club Member **Brenda L Bechtel** had her Oil on Linen; "Papyrus with Elephant Ears" juried into the Allied Artists of America 105th Annual Exhibition at the Salmagundi Club, NYC. The well-attended closing reception, on September 16th was an impressive showing with over \$25,000 given as selected by Judge of Awards, Scott A Schweigert, Curator, Reading Public Museum.

In Harvard Square, Cambridge, Massachusetts, both University Place and Kathryn Schultz Art Galleries host, through September 22nd, the 74th Annual Cambridge Art Association Fall Salon in Honor of Mary Schein.



A Watchful Eye

During the September 7th Awards reception, Brenda was presented with the Best in Show award for her transparent watercolour "Provincetown Window ~ A Watchful Eye". This is the third time Brenda's paintings have been honored to receive this award chosen by Ed Schein, and the only CAA Artist Member to receive this award more than once.

The Southern Vermont Art Center in Manchester hosts the Annual National Exhibition, Juried this year by Robert Carsten, PSA-mp, IAPS-mc and Georgine MacGarvey, through September 30 and includes

"Blue Skies Smiling at Me" Oil on Linen. The SVAC 140+ acre campus up a winding road ascending Mt Equinox is where the historic Webster Estate, Yester House Gallery is home to 12 individual galleries and the largest sculpture garden in Vermont with commanding views, in all directions of the Green and Taconic Mountains. Truly a place of beauty anytime of year, but foliage season is magnificent!

Bristol Art Museum in Rhode Island includes Brenda's Oil on Linen "Tea with H.F. at Three ~ Winterthur" in the Biennial Juried Exhibition, The Joy of Art, juried by Michael Rose, Curator of the Providence Art Club, through September 30th.

The Ely Whitney Center of Contemporary Art in the historic John Slade Whitney House, New Haven, Connecticut is hosting the New Haven Paint & Clay Club Annual Elected Artist Members Exhibit, Judged for awards by Paul Baylock (currently featured in New Britain Art Museum's "New/Now") Brenda's transparent watercolour "Landscape Melody" is included on view through September 30.



Landscape Melody

An opening reception for the Zullo Gallery 24th Annual National Juried Exhibition will take place September 22nd from 7 - 9pm in Medfield Massachusetts and includes Artists from throughout the United States and Europe. This exhibit continues through November 3rd and includes Brenda's transparent watercolour "Memories of Infinitude"

For Gallery hours and links, please visit Brenda's website <http://BrendaLBechtel.com>

Gallery hours: Wednesday, Friday, Saturday, Sunday: 1 PM to 5 PM

October 2018

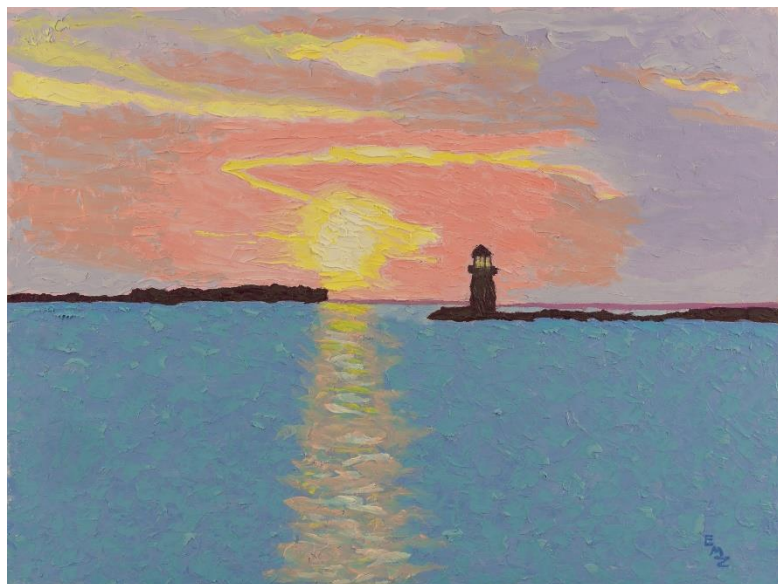
## Art Natters: Members News

PSC member, **Sally K Eisenberg** will continue to exhibit four of her abstract paintings from her body of work "Transitions" at The Academy House (1420 Locust Street) through October 14th.



Transitions

Sketch Club member **Elizabeth M Zack** would like to announce that I will be moving to Eastern Shore, MD by the end of the year to be closer to my Grandchildren and to live on the Chesapeake or one of its inlets. It has been my dream to live down there on the water for a number of years. My dream is about to become a reality. I will be painting more sunrises and sunsets on the water. My website will still be up at [www.ElizabethZack.com](http://www.ElizabethZack.com) I wish you all the very best!



Stream of Light, Bennett Point, MD; Light-House on Chesapeake

Elizabeth M Zack - Contemporary Landscape Artist

[ElizabethsArt@verizon.net](mailto:ElizabethsArt@verizon.net); [www.ElizabethZack.com](http://www.ElizabethZack.com); [www.facebook.com/ElizabethZackArtist](https://www.facebook.com/ElizabethZackArtist);  
[www.etsy.com/shop/ElizabethZackArtist](https://www.etsy.com/shop/ElizabethZackArtist) - Mobile 267.885.8777



Gallery hours: Wednesday, Friday, Saturday, Sunday: 1 PM to 5 PM

October 2018

## Art Natters: Members News

From new PSC member, **Leslie Brill**

One, Sometimes Two

October 2nd - October 27th, 2018

Opening Reception Thursday October 4, 5-8 p.m.

Blue Mountain Gallery

530 West 25th Street | New York | NY 10001 | 4th Fl  
tel 646.486.4730

Gallery Hours: Tues - Sat 11-6 p.m.

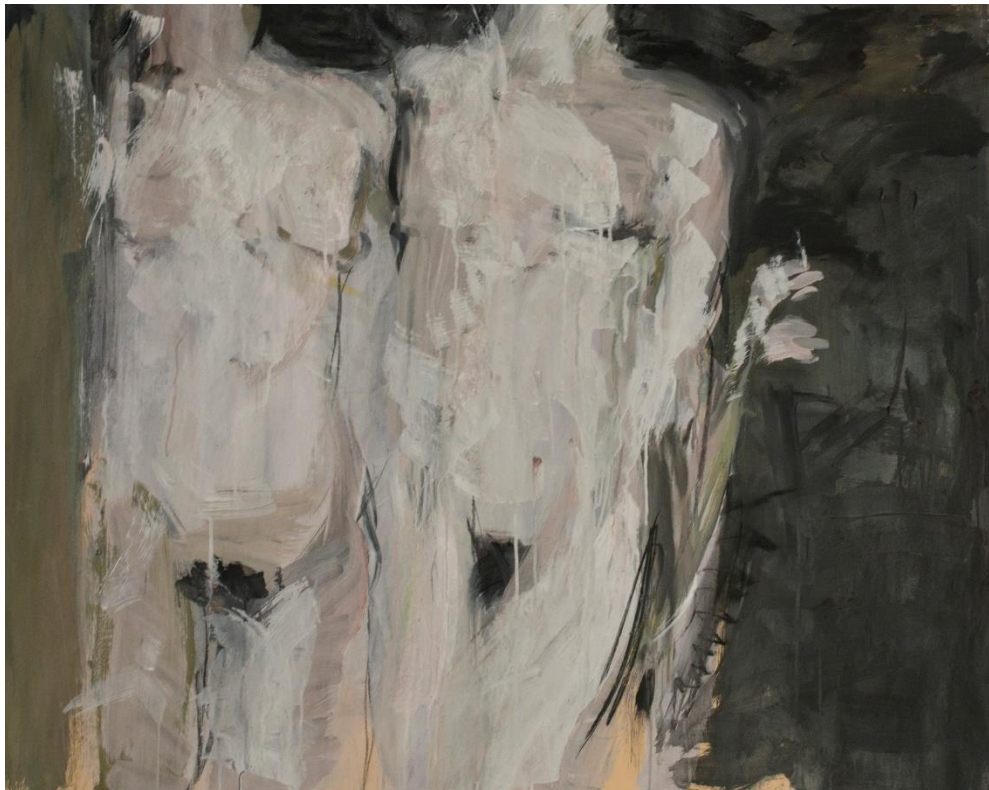
[Bluemountaingallery@verizon.net](mailto:Bluemountaingallery@verizon.net)

[www.lesliebrill.com](http://www.lesliebrill.com) | [www.bluemountaingallery.com](http://www.bluemountaingallery.com)

Leslie K. Brill



**Torso #1 (in Dialogue with Francesca Woodman Series)**



**Twins (in Dialogue with Francesca Woodman Series)**

Gallery hours: Wednesday, Friday, Saturday, Sunday: 1 PM to 5 PM

October 2018

## Art Natters: Members News

PSC member **Rob Finn** is happy to announce his first solo show. He'll be presenting his Tree Portraits at the Blum Gallery at the College of the Atlantic in Bar Harbor, Maine as the welcome event for their Alumni Weekend. Rob graduated COA in 1992 and also has a pair of murals on campus investigating the architectural history of some of the buildings there.

The opening is October 5th from 4:30 to 7 pm and the show will be up through October 19th. Hope to see you there!

# Tree Portraits

Including trees of Northern California, trees of Philadelphia, and trees of Mount Desert Island



An exhibition of watercolor paintings on paper by Rob Finn  
**The Blum Gallery**  
 College of the Atlantic  
 105 Eden St, Bar Harbor, ME  
 Opening Reception, October 5th, 4:30 - 6pm Alumni Welcome Event  
 Open for all visitors 6 - 7 pm  
 On view through October 19th, 8 am - 9 pm, Monday through Friday





Gallery hours: Wednesday, Friday, Saturday, Sunday: 1 PM to 5 PM

October 2018

## Art Natters: Members News

From Sketch Club member **Joanne Hirsh**: If anyone is interested in learning about the Great Books conference held at Colby College, I attended the last week of July, please contact me at 610-310-7062.

For one week attendees read and discuss classic literature that is provided to you as part of your fee which includes room and board. We meet in groups each morning to discuss the assigned books which are sent to you months in advance.

This year the subject was "wooing and love." Our six readings started with Shakespeare and ended Philip Roth. Next year the subject will be "memory."

In the evening we can attend musical performances, held on campus, by the Atlantic Music Festival which is in attendance at the college. Movies and screened in the evening as well and a visit to the art museum is a must. A great week in every way.

Joanne Hirsh

Licensed Real Estate Professional #RS325630

Honor Society

Mobile 610.310.7062

joanne.hirsh@foxroach.com

From Sketch Club member, **Susan Shipley**



Sunday  
OCT 7

550 Martin  
Street  
Roxborough

Susan Shipley

Abstract & Plein Air Paintings, **PHOTO-COLLAGES**



Gallery hours: Wednesday, Friday, Saturday, Sunday: 1 PM to 5 PM

October 2018

## Sketch Club Open Workshop Schedule

All workshops are open to the public. There is no need to register before attending. You do NOT have to be a member of the Philadelphia Sketch Club to participate in the workshops. Our workshops are open to anyone who is interested in drawing, painting or printmaking. All skill levels are welcome. Fees: Model workshops: \$8/session members, \$9/session for non-PSC members; Printmaking workshop: \$10/session; All workshops \$6 for full-time students. Monitored by PSC members.

Life Model	Costumed Model	Printmaking
<p>Mondays – Extended pose (multi-session): 6:30 PM-9:30PM</p> <p>Monitors: Robert Bohne, Vince Docktor, Dan Kuetemeyer</p> <p>Tuesdays – Extended pose: 12:00 PM to 3:00 PM Monitor: Jacqueline Barnett</p> <p>Wednesdays – Extended pose: 6:30 to 9:30 PM Monitor: Vince Docktor</p> <p>Saturdays – Extended pose: 9:30 AM to 12:30 PM Monitor: Vince Docktor</p>	<p>Thursdays</p> <p>Extended pose</p> <p>12:00 PM to 3:00 PM Monitor: Bob Bohne.</p>	<p>Tuesdays</p> <p>10:00 AM to 2:00 PM Monitor: Elizabeth H. MacDonald</p>

**Please Note: Those who use oil paints should bring their own container(s) to remove used solvents. Odorless solvents only.**

Thank you to all the PSC members who donate their time and expertise to make these workshops available to PSC members and the Philadelphia art community.

Gallery hours: Wednesday, Friday, Saturday, Sunday: 1 PM to 5 PM

October 2018

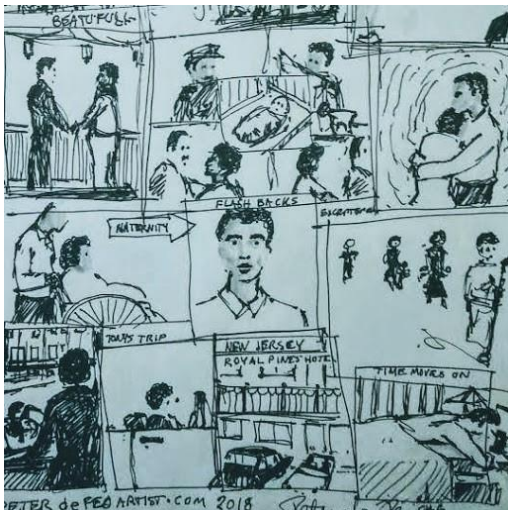
## Opportunities/Notices

As a courtesy to our non-PSC-member friends, in support of the Philadelphia artist community, we publish your notices, etc., free of charge. However, contributions to the PSC are always welcome.

[Contribute to the Sketch Club Here](#)

From **Peter Defeo**: Great news coming. Been working on "ROOM 9" the 2018 movie. The role as a judge fit well. The producer, director and others have gone crazy over my performance. All my years as an artist are paying off.

Mulatto is another movie. Here did story boards and Illustrations. They have also cast me as Mob Boss. Do I have that look? Lol

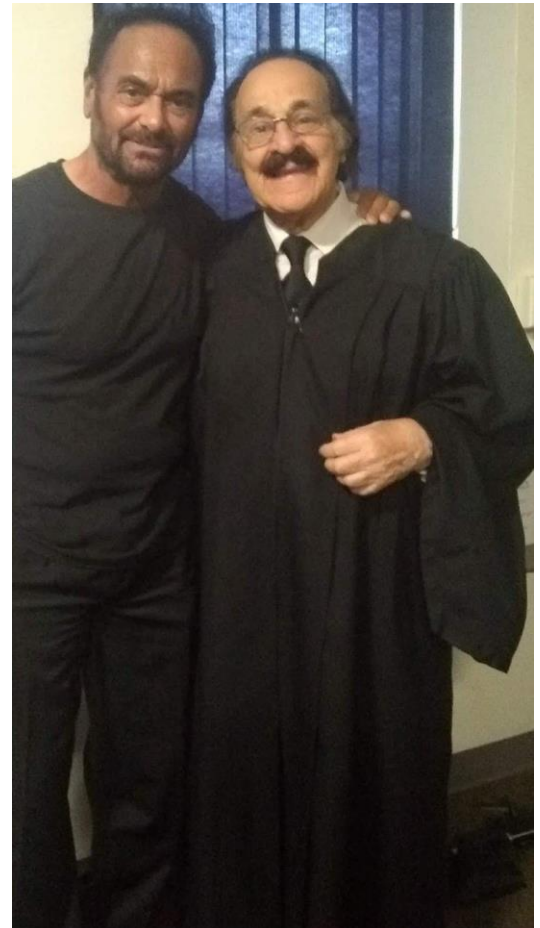


Agent wants to sell my personal collection. Here there are works of art that date back to 1949. Yes, I created them in the 1940's and won first place at Gimble's show. The people at the agency said my collection will bring in millions of dollars. Never thought would depart with my

children but I am in my 80's and my wife Passed on 9/7/2018 after two-week illness. Now seems to be the time to sell.

[peterdefeoartist.com](http://peterdefeoartist.com)

610-565-2000  
P.O. BOX 2000  
Media Pa, 19063



The Judge



Gallery hours: Wednesday, Friday, Saturday, Sunday: 1 PM to 5 PM

October 2018

## Opportunities/Notices

### Dan Tarradellas: Exhibit B Gallery, Souderton.

#### Mixed Media Encaustic Photography

Fall 2018 and beyond.

The encaustic mixed media photography of **Dan Tarradellas** will join the work of artists at Exhibit B Gallery starting this fall 2018.



Primarily self-taught and fascinated by the space that lies somewhere between photography and painting, Dan's

work embraces both the conceptual and the material. Dan's decidedly modern approach to digital photo manipulation, juxtaposed with classical sensibilities and the physical enhancement of the encaustic wax medium, renders the works a timeless and tangible significance.

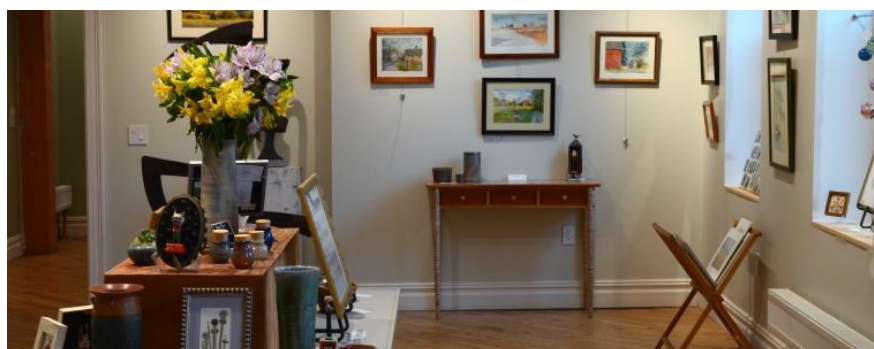
"Photography today can be so fleeting or even immaterial. Interpreting the physically as mixed media photography brings them to life!"

#### Exhibit B Gallery



The Exhibit B Gallery space is ablaze with inspiration. Harry and Heather Boardman are the owner-operators, and along with their Australian Sheard Crusher, they are a colorful and vibrant addition to main street.

The



Boardmans have completely refurbished the huge four-story building. The main floor comprises selling space for paintings and jeweler, as well as sculptures and small furnishings from 15 other local artists. Exhibit B Gallery 105 North Main Street b, Souderton, PA 18964 215.799.0266 - Instagram @exhibitbgallery; <http://www.exhibitbgallery.com>

## Membership

### Recent New PSC Members

The Sketch Club welcomes new members recently approved by the Board of Directors.

- William Rehm

Current Sketch Club members can review new member applications at: <http://sketchclub.org/member-applications/>. The members only section and documents are password protected. If you've forgotten the password, please contact Ken Weiner at: [membership@sketchclub.org](mailto:membership@sketchclub.org).

### Not a PSC Member?: Join Now!

If you're reading this edition of the Portfolio and you're not a member of the PSC, you should consider joining the more than 200 other Philadelphia area artists who have. The PSC is one of the most active visual art venues serving center city Philadelphia. The PSC is a hands-on organization that offers its members the opportunity to participate in all aspects of creating and presenting work to the public. It presents over 20 scheduled group and solo exhibitions annually and offers a wide range of daily workshops. [Get info and an application here](#).

If you are a member of the PSC, please feel free to share the Portfolio with your artist friends and encourage them to become members.

### Membership Renewal

You can check the status of your membership by going to the Current Members page on the PSC web-site: <http://sketchclub.org/sample-page/memberspace/>. All current members are listed. An asterisk (\*) means that the membership has expired but is within the 60-day grace period for renewal. Names in red are active links to the individual's web site.

Renew Now! <http://sketchclub.org/annual-dues-payment/>

If you have any questions about your membership, please don't hesitate to contact us at [membership@sketchclub.org](mailto:membership@sketchclub.org) or call the office: 215-545-9298.



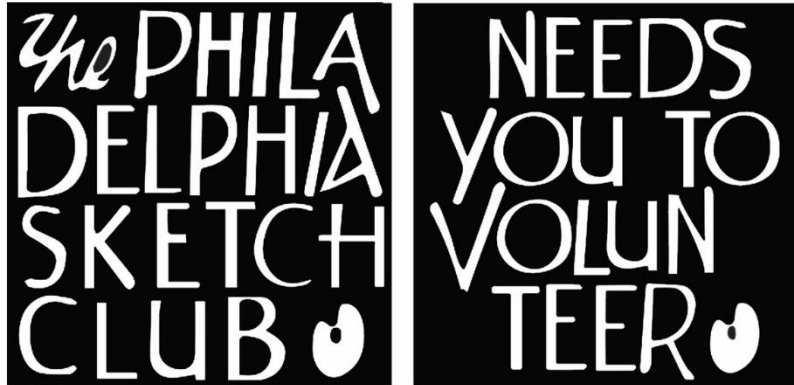
Gallery hours: Wednesday, Friday, Saturday, Sunday: 1 PM to 5 PM

October 2018

## Volunteer

### We Need You!

The Philadelphia Sketch Club is managed entirely by volunteers except for the gallery manager, housekeeping, and bookkeeper.



The PSC always needs volunteer members. Volunteering is one of the most important aspects of being a Sketch Club member and it is the one of the best ways to take advantage of the PSC. You'll be working with colleagues who share the same interests and helping the PSC provide unique services to the visual arts community. Sign up for an activity today.

Here are some of the activities volunteers perform:

- Chair exhibitions
- Assist in hanging exhibitions
- Covering exhibition drop-offs and pick-ups
- Monitor workshops
- Assist with presentations
- Serve on the Board of Directors
- Serve as Key Circle volunteers
- Publish the Portfolio
- Manage the PSC web site
- Gallery coverage
- Graphics for Portfolio, PSC web site, social media
- Assist in every aspect of managing the club and providing member services

To get involved, contact:

Jackie Barnett

Volunteer Coordinator

Philadelphia Sketch Club

[jbarnett12@verizon.net](mailto:jbarnett12@verizon.net)

Gallery hours: Wednesday, Friday, Saturday, Sunday: 1 PM to 5 PM

October 2018

## Support the Sketch Club

### Contribute

Please consider making your tax-deductible contribution now. These funds will be put to good use providing enhanced services to our members and friends.

Membership dues cover only a small portion of the PSC's operating expenses. Competition for funding for arts organizations like the Sketch Club is increasingly competitive and total funding for the arts is shrinking. Your additional support will keep the PSC an active support for visual artists in the Metropolitan Philadelphia area. The Philadelphia Sketch Club is an IRS designated 501(c) (3) non-profit organization.

You can call the office at 215-545-9298, mail checks to the Sketch Club or visit the Contribute page of our Website.

Visit our **Contribute** page of our website to give online at:

<http://sketchclub.org/support-us/>

You can also support the PSC on an ongoing basis when you shop on Amazon. Go to:

<http://smile.amazon.com/> and enter the Philadelphia Sketch Club in the Pick your own charitable organization box.

Your support makes it possible for the PSC to continue providing ongoing daily workshops and numerous annual gallery exhibitions.



Sketch Club Members receive a  
25% discount at Merion Art.  
Use promo code "PSC"  
online at [www.merionart.com](http://www.merionart.com)

"Our staff of experienced artists, custom framers, and designers can answer your art materials questions and help to creatively solve all your artistic problems. Stop in our store for personalized friendly attention, or go to [merionart.com](http://merionart.com) for access to thousands of quality art products!"

Monday - Friday: 8:30am - 6:00pm  
Saturday: 9:00am - 5:30pm  
Sunday: 12:00pm - 5:00pm

**Merion Art & Repro Center**  
17 West Lancaster Avenue  
Ardmore, PA 19003

(610) 896-6161 - Phone  
(610) 896-7781 - Fax



Gallery hours: Wednesday, Friday, Saturday, Sunday: 1 PM to 5 PM

October 2018

## Support the Sketch Club

# PHOTOLounge

The **PHOTOLounge** supports the Philadelphia Sketch Club and its members:

**Sketch Club Members receive a 15% discount at PHOTOLounge.**

**Use online promo code "sketch".**

The PHOTOLounge is located at 1909 Chestnut St. Philadelphia PA 19103.

For nearly 20 years, PHOTOLounge's focus has been the simple idea that pictures should be beautiful, affordable, and long lasting. We're a very adept photo lab with diverse services from iPhone printing to shoebox scanning. You can bring us film for processing, and also order prints online, or from the App. Come in and print your world.

**Sketch Club Members receive a 15% discount at PHOTOLounge.**

**Use online promo code "sketch".**

**267-322-6651 – [www.myphotolounge.com](http://www.myphotolounge.com)**

## Sketch Club members receive 20% discount



Framing Family Treasures for over 20 Years



**We offer a variety of framing materials and techniques including:**

- Archival / conservation treatment • Specialty mats (Linen, Suede, Silk)
- Stretching / Blocking of needleart and oils
- 1000's of moulding choices • 22 karat finished corner frames • Memorabilia framing
- Custom toning / coloring • Decorative mat cuts • French matting • Fillets
- Mirrors • Shadowboxing • Dry Mounting

**[www.CanalFrame.com](http://www.CanalFrame.com) • [CanalFrame@comcast.net](mailto:CanalFrame@comcast.net) • 215-493-3660**

**1093 General Greene Road, Washington Crossing, PA 18977**

Gallery hours: Wednesday, Friday, Saturday, Sunday: 1 PM to 5 PM

October 2018

## Support the Sketch Club

### Like, Link & Share

If you're not following the Philadelphia Sketch Club on Facebook re-tweeting Sketch Club tweets yet, it's time that you did. We have well over 2000 Facebook followers. Get the word out about the Sketch Club. Please click the like button and share your comments and invite your friends to like our page.

Follow @PhilaSketchClub on Twitter, we have almost 400 followers. Please click the heart button and re-tweet our announcements.

Include links on your website, blogs and social media to The Philadelphia Sketch Club to increase traction across social media platforms.

Follow us on Facebook, Twitter and Instagram now!

Thanks to Don Brewer and Michelle Lockamy for managing PSC social media sites.



## Member Classifieds

### Seeking Framers

Sketch Club members frequently ask about framing services. If you wish to provide framing services to PSC members, please contact the PSC at [info@sketchclub.org](mailto:info@sketchclub.org) or call the PSC office: 215 545-92908



Gallery hours: Wednesday, Friday, Saturday, Sunday: 1 PM to 5 PM

October 2018

The Portfolio: The newsletter of the Philadelphia Sketch Club is published monthly. Editor: Ken Weiner; Technical support and Web Master: Ken Weiner. Send your member news, announcements and corrections to [portfolio@sketchclub.org](mailto:portfolio@sketchclub.org). The due date for all materials is one week before the end of the month.

Back issues of the Portfolio are available at: <http://sketchclub.org/portfolio-archive/>

Thanks to PSC member volunteer **Ken Weiner** for his ongoing support of Sketch Club technology and communications functions.

#### **The Philadelphia Sketch Club**

235 S Camac Street  
Philadelphia, PA 19107  
(215) 545-9298  
<http://sketchclub.org/>  
[executivedirector@sketchclub.org](mailto:executivedirector@sketchclub.org)

Gallery Manager: Michelle Lockamy

#### **Officers:**

- President: Richard Harrington
- Vice President: Kenneth Weiner
- Secretary: Fran Carter
- Treasurer: William Patterson

#### **Board of Directors**

- Michael Fernandez
- Jacqueline Barnett
- Stephen Iwanczuk
- Kevin Myers
- Charles F. Tarr
- Joe Winter