

Gallery hours: By appointment: Wednesday, Friday, Saturday, Sunday: 1 PM to 5 PM December 2019

SANTA TAKES UP PLEIN AIR LANDSCAPE PAINTING at the NORTH POLE



December
2019

HARRINGTON ©2019

Rich Harrington

December 3rd, 2019 is Giving Tuesday. As a member or friend of the PSC, you know how valuable the Sketch Club it is to your creative life. Help us to continue enriching your life by giving us your extra support.

Beat the rush. Go to: [DONATE NOW!](#)

This Month's Portfolio

Sketch Club Special Events	2
Main Gallery Schedule	5
Stewart Gallery Schedule	7
Sketch Club Activities	8
Sketch Club Open Workshop Schedule	15
Opportunities/Notices	16
Membership	19
Volunteer	20
Support the Sketch Club	21
Member Classifieds	23
Send your member news, announcements and corrections to: portfolio@sketchclub.org . The deadline for ALL submissions is 1-week before the end of the month.	

Reminder: It's never too late. You can always renew your membership

You may pay online at <http://sketchclub.org/annual-dues-payment/> or mail your check to:

The Philadelphia Sketch Club
235 S. Camac St.
Philadelphia, PA 19107

For questions please contact the Gallery Manager at 213335-545-9298 or email:

executivedirector@sketchclub.org

Late Breaking News – See items that were submitted after the publication date. Go to:

info@sketchclub.org

The PSC general email is: info@sketchclub

Gallery hours: By appointment: Wednesday, Friday, Saturday, Sunday: 1 PM to 5 PM December 2019

Sketch Club Special Events



The Philadelphia Sketch Club's Annual Holiday Party

Saturday December 14th, 2019 • 1 to 4 PM

\$25 per person includes a great selection of hot hors d'oeuvres,
Open Bar, and PSC's famous Fish House Punch

Holiday Party Open
to PSC Members
and their guests

Stewart
Room Exhibition
Lottery at 3 PM



Music

Annual Purity
League Auction
and Legacy Show
Auction at 4 PM!

215.545.9298
for reservations

[RSVP Here Now!](#)

Gallery hours: By appointment: Wednesday, Friday, Saturday, Sunday: 1 PM to 5 PM December 2019

Sketch Club Special Events



The 2020 Exhibition Schedule

The Sketch Club offers monthly exhibitions in the Upstairs Gallery and the Stewart Gallery. Artists, Friends, plan your submissions and visits now.

[Get the Schedule](#)

Gallery hours: By appointment: Wednesday, Friday, Saturday, Sunday: 1 PM to 5 PM December 2019

Sketch Club Special Events

December 3rd, 2019 is Giving Tuesday

DONATE NOW!



DONATE NOW!

The support and opportunities provided by the Philadelphia Sketch Club to our community can only exist through the mutual support of our Metropolitan Philadelphia area friends and artists. Your support enables the Philadelphia Sketch Club to provide artists with studio space, exhibition opportunities, and free access to our facility. Thank you for your support.

Gallery hours: By appointment: Wednesday, Friday, Saturday, Sunday: 1 PM to 5 PM December 2019

Main Gallery Schedule

[See the 2020 Exhibition Schedule](#)
[Important Dates for all PSC Activities](#)

The Legacy Show: Annual Holiday Art Show & Sale December 1 – 26, 2019

Reception & Auction

Saturday December 14,
2019

- 1 - 4 PM : Members
Holiday Party
- 4 PM : Reception
(open to the public)
- 4:15 - 5 PM : Auction



What is a "Legacy"?

- A "Legacy" is an artwork that a Sketch Club member donates to this special club sale for the benefit of the Club's programs and renovation projects. The entire proceeds of the sale support these efforts.
- A "Legacy Miniature" is a small donated work, priced up to \$75.
- A "Legacy Masterwork" is a larger donated work, priced no higher than \$200.

[**RSVP Here Now!**](#)

Gallery hours: By appointment: Wednesday, Friday, Saturday, Sunday: 1 PM to 5 PM December 2019

Main Gallery Schedule

Coming January 1 – 28, 2020:

The 2020 Philadelphia Sketch Club Annual Domenic DiStefano Memorial Works
on Paper Juried Exhibition



Artists, there's still time to enter.

The submission deadline is midnight December 8, 2019

[Get the Prospectus and Enter on-line](#)

Gallery hours: By appointment: Wednesday, Friday, Saturday, Sunday: 1 PM to 5 PM December 2019

Stewart Gallery Schedule

December 1st – 26th, 2019: The Volunteer Art Exhibiton



Coming in Jnuary 2020: Leslie K. Brill Solo Show

January 1 – 28

Details to be Announced



**Exhibition space in
the Stewart Gallery
is available for PSC
Members!**

Reserve the gallery by
contacting our
Exhibition Coordinator:
exhibitions@sketchclub.org

The space is \$150 for a
month. Members can
show once in the Stewart
Gallery per year.

[See the 2020 Exhibition Schedule](#)
[Important Dates for all PSC Activites](#)

Gallery hours: By appointment: Wednesday, Friday, Saturday, Sunday: 1 PM to 5 PM December 2019

Sketch Club Activities

No Dinner Meeting in December.

Plan to attend the 2019 Holiday Party

[RSVP Here Now!](#)

Save the Date



**The Philadelphia Sketch Club's
Annual Holiday Party**

Saturday December 14th, 2019 • 1 to 4 PM

**\$25 per person includes a great selection of hot hors d'oeuvres,
Open Bar, and PSC's famous Fish House Punch**

**Holiday Party Open
to PSC Members
and their guests**

**Stewart
Room Exhibition
Lottery at 3 PM**



**Annual Purity
League Auction
and Legacy Show
Auction at 4 PM!**

**215.545.9298
for reservations**

Gallery hours: By appointment: Wednesday, Friday, Saturday, Sunday: 1 PM to 5 PM December 2019

Sketch Club Activities

Cancelled for December: Critique Night

Open to PSC Members and Non-Members

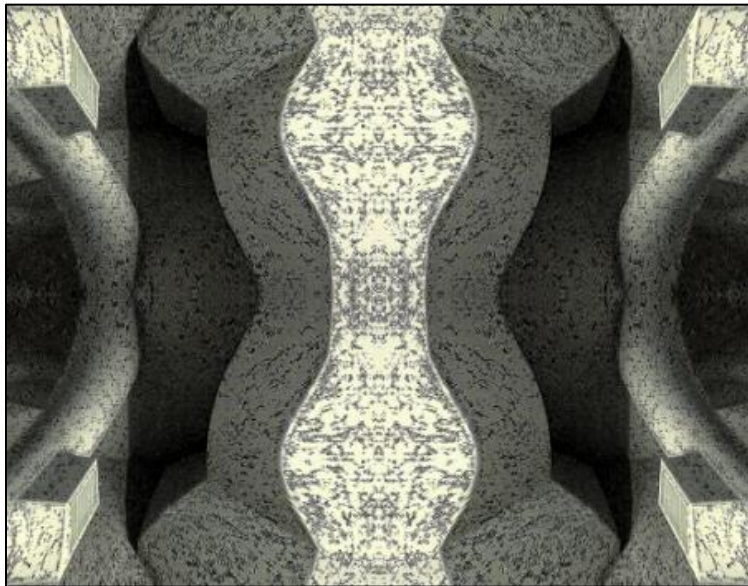
RSVP to Michelle Lockamy at 215-545-9298 or
executivedirector@sketchclub.org

Critique Night is held in the Library of the Sketch Club every third Wednesday beginning at 7 PM. Bring work you've finished, work in progress, or just sketches for work you're planning! Photos, digital work, drawings, all mediums are welcome; we can project digital images on a screen for review, so you have the option to show work that may be too big or too heavy to transport to the Club. There is no one individual directing the critique, just your fellow artists and peers. Facilitated/monitored by Rich Harrington, PSC President



Thanks to PSC member volunteer **Rich Harrington** for organizing and monitoring this event

Cancelled for December: Photo Circle



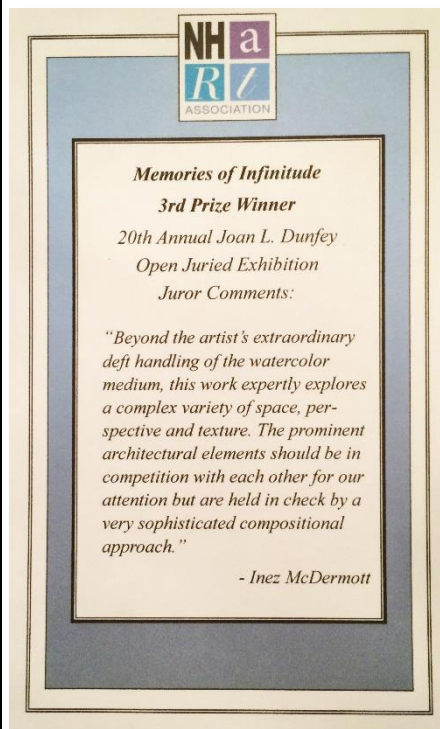
We will discuss new group activities and possibilities for expansion. The Photo Circle meets every 2nd Thursday at 6:30 PM. You can contact Steve anytime at stphniwan@gmail.com or 215-300-9192 (cell). **Steve Iwanczuk**, Photo Circle Monitor and Member of Philadelphia Sketch Club Board of Directors.

Thanks to PSC member volunteer **Steve Iwanczuk** for organizing and monitoring this event.

Gallery hours: By appointment: Wednesday, Friday, Saturday, Sunday: 1 PM to 5 PM December 2019

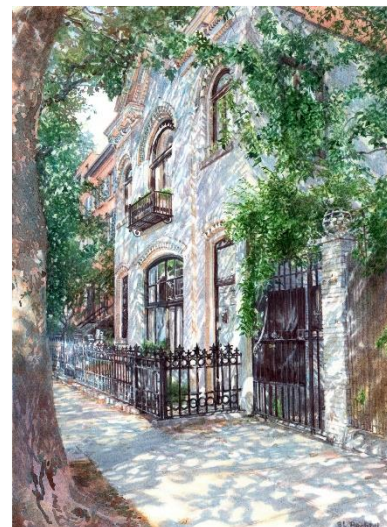
Art Natters: Members News

Sketch Club member **Brenda Bechtel** was awarded First Place, Oils, in the Embodying Masonic Values Exhibition at the Masonic Library and Museum, Philadelphia. Much gratitude to Judges; Brother Alvin E Just, DDGM-41; William Scott Noel and Moe A Brooker.



Inez McDermott Awarded Third Prize to Memories of Infinitude, Transparent Watercolour in the 20th Annual Joan L Dunfey Exhibition, on view through December 2 at New Hampshire Art Association, Manchester, NH. (her insightful comments are attached)

VanVleck's Wisteria Courtyard ~ Counter Clockwise, Charcoal & Conte was recognized by Judge of Awards; Adam Eaker, Metropolitan Museum of Art with an Honorable Mention Award in the 91st American Artists Professional League Exhibition at the Salmagundi, NYC on view through November 22.



Lacework on Montague

At the Cotuit Center for the Arts, Lacework on Montague, transparent watercolour, is included in the 2019 Member-Student-Faculty Exhibition. The Public is invited to the Opening Reception Festivities, Saturday November 23, 5 - 7 to enjoy hors d'oeuvres, beverage, camaraderie and Fabulous Artworks which, for a small monetary commitment, may be purchased through December 29th.



Memories of Infinitude



Masonic Temple ~ Philadelphia

Gallery hours: By appointment: Wednesday, Friday, Saturday, Sunday: 1 PM to 5 PM December 2019

Art Natters: Members News

Fresh from his November show in the Stewart Room, Sketch Club member **Christopher Fowler's** work will be in the stairway gallery of the Or Hadash Synagogue (190 Camp Hill Rd in Fort Washington, PA) from January to mid-April 2020.



Sheep May Safely Graze

Sketch Club member **Su Knoll Horthy** has been accepted into the Main Line Art Center's Professional Artist Members Program (PAM). She has been chosen to be December's PAM of the Month. Su's painting, *Color Pops 24*, will be displayed in the lobby of the Art Center on December 2nd through January 2nd, 2020. *Color Pops 24* will also be featured on the home page of the Main Line Art Center's website for the duration of the month.



Color Pops 24

Gallery hours: By appointment: Wednesday, Friday, Saturday, Sunday: 1 PM to 5 PM December 2019

Art Natters: Members News

Congratulations to PSC member **Kathleen S. Catanese** for her induction into the National Association of Women Artists, Inc. The ceremony was held on November 14th at the Rubin Museum in NYC. Her collage, "Dreamscape" was displayed in the New Members Exhibition at the NAWA gallery in NYC. Check out their website for a listing of upcoming member and nonmember exhibition opportunities. thenawa.org.



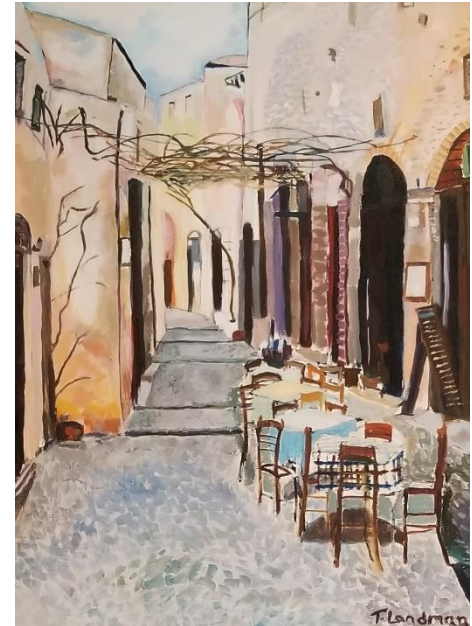
Dreamscape

Gallery hours: By appointment: Wednesday, Friday, Saturday, Sunday: 1 PM to 5 PM December 2019

Art Natters: Members News

Sketch Club member **Tracey Landmann's** "Paint the Light Fantastic" solo show will continue through the month of December at Gallery 919, at 919 N. Market St. in Wilmington, DE. There will be a reception on Friday, December 6, 5-8.

Tracey also won the Shirley Holden Helberg grant for Mature Women, in Art, from the National League of American Pen Women. The funding is to be used for the continuation of her Moveable Mural project, designed to introduce pediatric development opportunities to children to whom they are otherwise seldom available. She recently spoke about the early stage of this program at a Sketch Club dinner.



Sketch Club member **Dino Sistilli** won the Salmagundi Club award at the 91th Grand National Exhibition of the American Artists Professional League. The award went to his oil painting, "Ore Ship". The awards were held at the Salmagundi Club in NYC on November 17, 2019.



Ore Ship

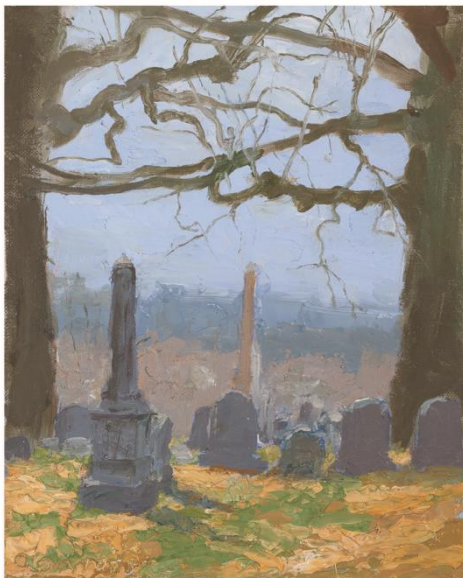
Gallery hours: By appointment: Wednesday, Friday, Saturday, Sunday: 1 PM to 5 PM December 2019

Art Natters: Members News



Mid-Winter Late Afternoon, Looking Southwest from Ridge
Oil on prepared paper, 9 x 12 inches

Front Image:
Midsummer, Gatehouse Cypress
Oil on prepared paper, 12 x 9 inches



Early Spring Afternoon, Vista Between Two Trees
Oil on linen, 12 x 9 inches

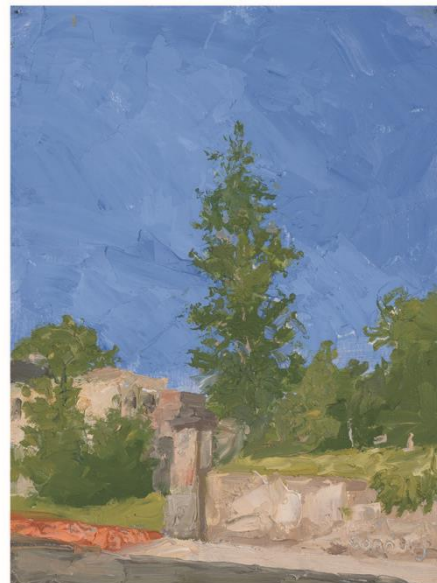
Patrick Connors *A Place Apart*

December 6 - 28, 2019

Opening reception:
Friday, December 6, 5 - 7pm

Gross McCleaf Gallery
127 South Sixteenth Street
Philadelphia, PA 19102
215.665.8138
www.grossmccleaf.com

Tuesday - Saturday 10am - 5pm



Patrick Connors

Gallery hours: By appointment: Wednesday, Friday, Saturday, Sunday: 1 PM to 5 PM December 2019

Sketch Club Open Workshop Schedule

All workshops are open to the public. There is no need to register before attending. You do NOT have to be a member of the Philadelphia Sketch Club to participate in the workshops. Our workshops are open to anyone who is interested in drawing, painting or printmaking. All skill levels are welcome. Fees: Model workshops: \$8/session members, \$9/session for non-PSC members; Printmaking workshop: \$10/session; All workshops \$6 for full-time students. Monitored by PSC members.

Life Model	Costumed Model	Printmaking
<p>Mondays – Extended pose (multi-session): 6:30 PM-9:30PM</p> <p>Monitors: Robert Bohne, Vince Docktor, Dan Kuetemeyer</p> <p>Tuesdays – Extended pose: 12:00 PM to 3:00 PM Monitor: Jacqueline Barnett</p> <p>Wednesdays – Extended pose: 6:30 to 9:30 PM Monitor: Vince Docktor</p> <p>Saturdays – Extended pose: 9:30 AM to 12:30 PM Monitor: Vince Docktor</p>	<p>Thursdays</p> <p>Extended pose 12:00 PM to 3:00 PM Monitor: Bob Bohne.</p>	<p>Tuesdays</p> <p>10:00 AM to 2:00 PM Monitor: Elizabeth H. MacDonald</p>

Please Note: Those who use oil paints should bring their own container(s) to remove used solvents. Odorless solvents only.

Thank you to all the PSC members who donate their time and expertise to make these workshops available to PSC members and the Philadelphia art community.

Gallery hours: By appointment: Wednesday, Friday, Saturday, Sunday: 1 PM to 5 PM December 2019

Opportunities/Notices

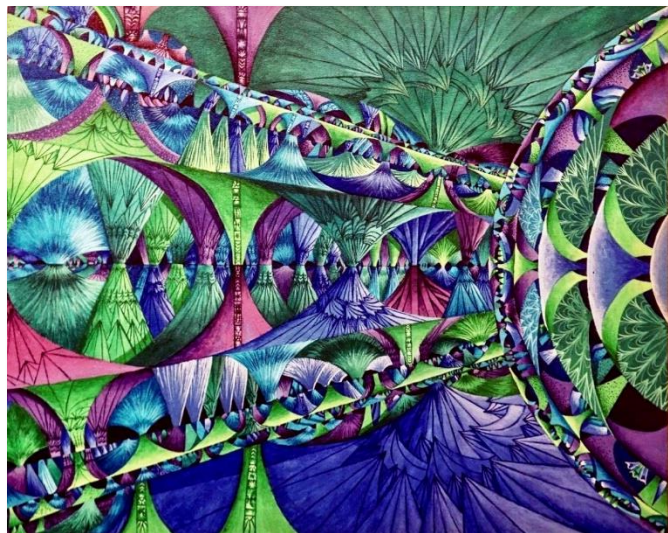
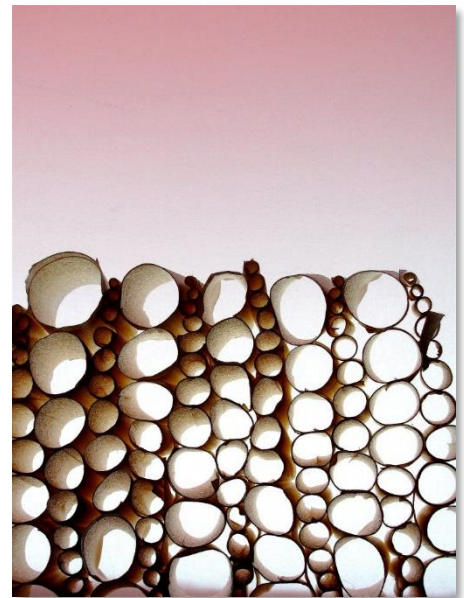
As a courtesy to our non-PSC-member friends, in support of the Philadelphia artist community, we publish your notices, etc., free of charge. However, contributions to the PSC are always welcome. And, we will gladly consider your application for membership

[Contribute to the Sketch Club Here](#) [Apply for PSC Membership Here](#)

Born and raised in central Pennsylvania, **Lori Evensen** has been creating art since she was under the age of two. While studying at Tyler School of Art at Temple University, Lori spent a semester studying abroad in Rome and Tunisia, an experience which significantly refined her artistic vision. She graduated with a BFA in painting in 2011 and has gone on to sell and exhibit in numerous galleries, cafe's, nightspots, science centers and other venues in Philadelphia, Rome, and State College. Ms. Evensen currently lives and works in Philadelphia PA.

See more of Lori's work at:

<https://lorievenesen.weebly.com/>



Gallery hours: By appointment: Wednesday, Friday, Saturday, Sunday: 1 PM to 5 PM December 2019

Opportunities/Notices



The Burrison Art Gallery
University Club
The Inn at Penn
3611 Walnut Street
Philadelphia PA 19104

Sherman Aronson

**Urban Nature
Green Cities
Still Life**

23 November 2019 -
10 January 2020

Reception - Friday
06 December 2019
5:00-7:00 PM

[https://cms.business-services.upenn.edu/
universityclub/burrison-gallery.html](https://cms.business-services.upenn.edu/universityclub/burrison-gallery.html)
215-573-8627

www.shermanaronson.com/prints
sca2012@outlook.com



Sherman Aronson A Friend of PSC.

<https://www.shermanaronson.com/>

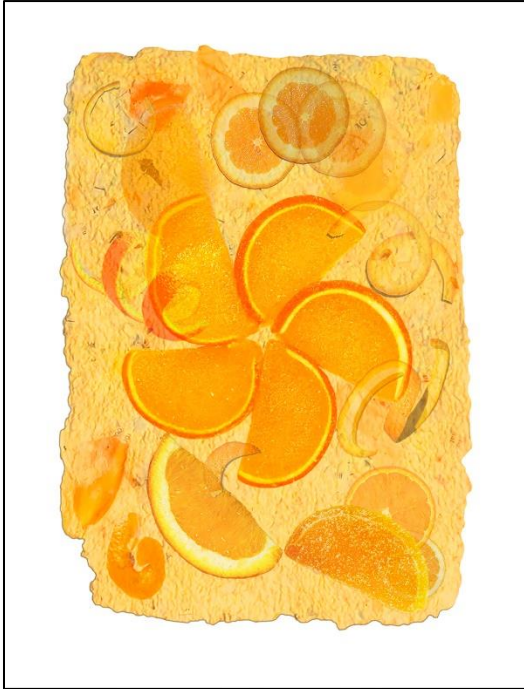
This show includes a series of images called "Urban Nature / Green Cities". The focus is to explore the importance of green spaces within our cities, to heighten our awareness of nature around us in the dense urban contexts where we live. Trees, flowers, gardens, walks and natural settings, whether large or small, offer a sense of well-being as well as direct environmental benefit to life around them. Enhancing our perception and conscious awareness of our urban parks and streetscape plantings can support our subconscious behavior and appreciation of climate change and human responses. And travel sketches are great fun.

As a corollary to the urban context for appreciating green places, the show also delves into some simple forms, colors and shapes in still life settings with new selections from the "Blue Vases" series. Using a collection of glass vases and bottles, set against a window with garden views, challenges our view of ordinary objects, perception of light and transparency, and adds an element of contemplation to the art subject. In addition, there will be a small selection of drawings to illustrate the process from original sketch to final color image.

Gallery hours: By appointment: Wednesday, Friday, Saturday, Sunday: 1 PM to 5 PM December 2019

Opportunities/Notices

William Draper Smith presents *Orange Slices*, one of a 16-piece study of candy images. "Once I completed my "Flower Series", I moved onto a series of candy images; the long-past and friendly old-time candy."



Candy Series - Orange Slices

I have also integrated the use of my own hand-made and recycled-papers for the backgrounds for all of the 16 images in the series. Attached: "Orange Slices"

ladyemma@comcast.net

<http://www.pixelpup.art>

Gallery hours: By appointment: Wednesday, Friday, Saturday, Sunday: 1 PM to 5 PM December 2019

Membership

In Memory: Former PSC Member Fred H. Andrus June 4, 1950 – November 15, 2019

Fred H. Andrus of Philadelphia, PA passed away on November 15, 2019 at the age of 69. He was born June 4, 1950 in Akron, OH to the late Dr. Frederick H. & Ruth E. (Polk) Andrus.

Fred was predeceased by his father, his mother and his brother James Andrus. He is survived by his one true love Sally Bernhardt; sisters Jean Andrus; Betty Andrus; Kathy (Ronnie Lengel) Andrus; and nieces Mallory Lengel and Hunter Lengel.

Fred was a true renaissance man: a lifelong classical pianist and cellist, a talented painter, and a voracious reader. He was kind to everyone he met and will be missed greatly by all who knew him.

Fred moved to Philadelphia in his 20s and found a love for the city and Eastern Pennsylvania. He worked for Independence Blue Cross for over 20 years, where he met the love of his life, Sally. He spent the last 13 years sharing his life with Sally and her loving family in addition to his own.



Relatives and friends are invited to his visitation on Monday, December 16, 2019 from 10:00 to 11:00 AM at Cavanagh-Patterson Funeral home, 43 E Baltimore Pike, Media, PA 19063. Memorial Service will begin at 11:00 AM.

Not a PSC Member?: Join Now!

If you're reading this edition of the Portfolio and you're not a member of the PSC, you should consider joining the more than 200 other Philadelphia area artists who have. The PSC is one of the most active visual art venues serving center city Philadelphia. The PSC is a hands-on organization that offers its members the opportunity to participate in all aspects of creating and presenting work to the public. It presents over 20 scheduled group and solo exhibitions annually and offers a wide range of daily workshops. [Get info and an application here.](#)

If you are a member of the PSC, please feel free to share the Portfolio with your artist friends and encourage them to become members.

Membership Renewal

You can check the status of your membership by going to the Current Members page on the PSC web-site: <http://sketchclub.org/sample-page/memberspace/>. All current members are listed. An asterisk (*) means that the membership has expired but is within the 60-day grace period for renewal. Names in red are active links to the individual's web site.

Renew Now! <http://sketchclub.org/annual-dues-payment/>

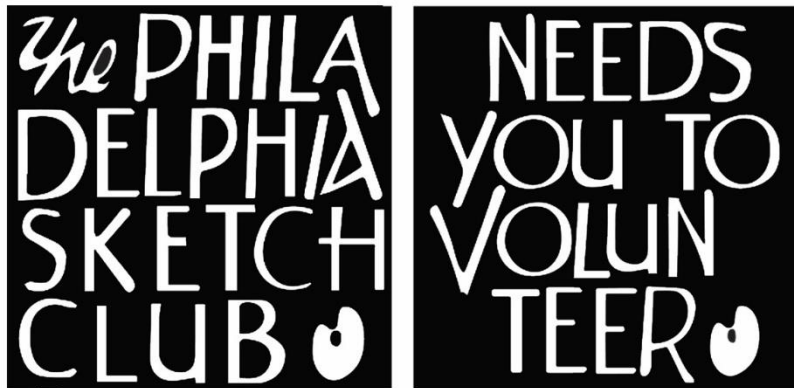
If you have any questions about your membership, please don't hesitate to contact us at membership@sketchclub.org or call the office: 215-545-9298.

Gallery hours: By appointment: Wednesday, Friday, Saturday, Sunday: 1 PM to 5 PM December 2019

Volunteer

Be an Active Sketc Club Member; Volunteer!!

The Philadelphia Sketch Club is managed entirely by volunteers except for the gallery manager, housekeeping, and bookkeeper.



The PSC always needs volunteer members. Volunteering is one of the most important aspects of being a Sketch Club member and it is the one of the best ways to take advantage of the PSC. You'll be working with colleagues who share the same interests and helping the PSC provide unique services to the visual arts community. Sign up for an activity today.

Here are some of the activities that volunteers perform:

- Chair exhibitions
- Assist in hanging exhibitions
- Covering exhibition drop-offs and pick-ups
- Monitor workshops
- Assist with presentations
- Serve on the Board of Directors
- Serve as Key Circle volunteers
- Publish the Portfolio
- Manage the PSC web site
- Gallery coverage
- Graphics for Portfolio, PSC web site, social media
- Assist in every aspect of managing the club and providing member services

To get involved, contact:

Jackie Barnett

Volunteer Coordinator

Philadelphia Sketch Club

jbarnett12@verizon.net

Gallery hours: By appointment: Wednesday, Friday, Saturday, Sunday: 1 PM to 5 PM December 2019

Support the Sketch Club

Contribute

Please consider making your tax-deductible contribution now. These funds will be put to good use providing enhanced services to our members and friends.

Membership dues cover only a small portion of the PSC's operating expenses. Competition for funding for arts organizations like the Sketch Club is increasingly competitive and total funding for the arts is shrinking. Your additional support will keep the PSC an active support for visual artists in the Metropolitan Philadelphia area. The Philadelphia Sketch Club is an IRS designated 501(c) (3) non-profit organization.

You can call the office at 215-545-9298, mail checks to the Sketch Club or visit the Contribute page of our Website.

Visit our **Contribute** page of our website to give online at:

<http://sketchclub.org/support-us/>

You can also support the PSC on an ongoing basis when you shop on Amazon. Go to:

<http://smile.amazon.com/> and enter the Philadelphia Sketch Club in the Pick your own charitable organization box.

Your support makes it possible for the PSC to continue providing ongoing daily workshops and numerous annual gallery exhibitions.



Sketch Club Members receive a
25% discount at Merion Art.
Use promo code "PSC"
online at www.merionart.com

"Our staff of experienced artists, custom framers, and designers can answer your art materials questions and help to creatively solve all your artistic problems. Stop in our store for personalized friendly attention, or go to merionart.com for access to thousands of quality art products!"

Monday - Friday: 8:30am - 6:00pm
Saturday: 9:00am - 5:30pm
Sunday: 12:00pm - 5:00pm

Merion Art & Repro Center
17 West Lancaster Avenue
Ardmore, PA 19003

(610) 896-6161 - Phone
(610) 896-7781 - Fax

Gallery hours: By appointment: Wednesday, Friday, Saturday, Sunday: 1 PM to 5 PM December 2019

Support the Sketch Club

PHOTOLounge

The PHOTOLounge supports the Philadelphia Sketch Club and its members:

Sketch Club Members receive a 15% discount at PHOTOLounge.

Use online promo code "sketch".

The PHOTOLounge is located at 1909 Chestnut St. Philadelphia PA 19103.

For nearly 20 years, PHOTOLounge's focus has been the simple idea that pictures should be beautiful, affordable, and long lasting. We're a very adept photo lab with diverse services from iPhone printing to shoebox scanning. You can bring us film for processing, and also order prints online, or from the App. Come in and print your world.

Sketch Club Members receive a 15% discount at PHOTOLounge.

Use online promo code "sketch".

267-322-6651 – www.myphotolounge.com

Sketch Club members receive 20% discount



Framing Family Treasures for over 20 Years



We offer a variety of framing materials and techniques including:

- Archival / conservation treatment • Specialty mats (Linen, Suede, Silk)
- Stretching / Blocking of needleart and oils
- 1000's of moulding choices • 22 karat finished corner frames • Memorabilia framing
- Custom toning / coloring • Decorative mat cuts • French matting • Fillets
- Mirrors • Shadowboxing • Dry Mounting

www.CanalFrame.com • CanalFrame@comcast.net • 215-493-3660

1093 General Greene Road, Washington Crossing, PA 18977

Gallery hours: By appointment: Wednesday, Friday, Saturday, Sunday: 1 PM to 5 PM December 2019

Support the Sketch Club

Like, Link & Share

If you're not following the Philadelphia Sketch Club on Facebook re-tweeting Sketch Club tweets yet, it's time that you did. We have well over 2000 Facebook followers. Get the word out about the Sketch Club. Please click the like button and share your comments and invite your friends to like our page.

Follow @PhilaSketchClub on Twitter, we have almost 400 followers. Please click the heart button and re-tweet our announcements.

Include links on your website, blogs and social media to The Philadelphia Sketch Club to increase traction across social media platforms.

Follow us on Facebook, Twitter and Instagram now!

Thanks to Don Brewer and Michelle Lockamy for managing PSC social media sites.



Member Classifieds

Seeking Framers: Sketch Club members frequently ask about framing services. If you wish to provide framing services to PSC members, please contact the PSC at info@sketchclub.org or call the PSC office: 215 545-92908

From Sketch Club member **Joanne Hirsh**: Our offices, Berkshire Hathaway Fox & Roach have moved to The Harper, 112 S. 19th St. The Harper is a beautiful new rental building and features an entry level restaurant, K'far, by the chef of Zahav...come in and enjoy!



Gallery hours: By appointment: Wednesday, Friday, Saturday, Sunday: 1 PM to 5 PM December 2019

The Portfolio: The newsletter of the Philadelphia Sketch Club is published monthly. Editor, technical support and webmaster: Ken Weiner. Send your member news, announcements and corrections to portfolio@sketchclub.org. The due date for all materials is one week before the end of the month.

Back issues of the Portfolio are available at: <http://sketchclub.org/portfolio-archive/>

Thanks to PSC member volunteer **Ken Weiner** for his ongoing support of Sketch Club technology and communications functions.

The Philadelphia Sketch Club

235 S Camac Street
Philadelphia, PA 19107
(215) 545-9298
<http://sketchclub.org/>
executivedirector@sketchclub.org

Gallery Manager: Michelle Lockamy

Officers:

- President: Richard Harrington
- Vice President: Kenneth Weiner
- Secretary: Elise Anzini
- Treasurer: William Patterson

Board of Directors

- Jacqueline Barnett
- Renard Edwards
- Stephen Iwanczuk
- Edward Pluciennik
- Charles F. Tarr
- Gail Williams