

Gallery hours: Wednesday, Friday, Saturday, Sunday: 1 PM to 5 PM

November 2018

POLITICAL LANDSCAPES

CHOOSE
YOUR
SUBJECT



NOVEMBER 2018



THE RONALD REAGAN ROCKSLIDE
DAVIS, CA.



THE BILL CLINTON BOULDER
KEIZER, OR.



THE DONALD TRUMP STUMP
GIRARD, OHIO



THE GEORGE W. BUSH
ALLENTOWN, PA.

This Month's Portfolio

2018 Main Gallery Schedule	2
2018 Stewart Gallery Schedule	3
Sketch Club Activities	4
Art Natters: Members News	9
Sketch Club Open Workshop Schedule	13
Opportunities/Notices	14
Membership	15
Volunteer	16
Support the Sketch Club	17
Member Classifieds	19

Send your member news, announcements and corrections to portfolio@sketchclub.org. The deadline for ALL submissions is 1-week before the end of the month.

Reminder: It's never too late. You can always renew your membership

You may pay online at <http://sketchclub.org/annual-dues-payment/>

or mail your check to:

The Philadelphia Sketch Club

235 S. Camac St.

Philadelphia, PA 19107

For questions please contact the Gallery Manager at 213335-545-9298 or email:

executivedirector@sketchclub.org

Late Breaking News – See items that were submitted after the publication date. Go to:

info@sketchclub.org

The PSC general email is: info@sketchclub

Gallery hours: Wednesday, Friday, Saturday, Sunday: 1 PM to 5 PM

November 2018

2018 Main Gallery Schedule

[See the 2018 Exhibition Schedule](#)

[Important Dates for all PSC Activities](#)

In the Main Gallery



**the PHILA
DELPHIA
SKETCH
CLUB**

Phillustration 10

November 7th -23rd 2018

**The Philadelphia Sketch Club's
10th Annual Open Juried Exhibition
of Illustration**

Opening Reception Sunday November 18th, 2 to 4 PM

235 S. Camac St. Philadelphia

www.sketchclub.org or 215-545-9298 for more information

Illustration by David Brinley www.davidbrinley.com

Gallery hours: Wednesday, Friday, Saturday, Sunday: 1 PM to 5 PM

November 2018

2018 Main Gallery Schedule

2018 PSC Legacy Art Sale & Show Exhibition
December 5th – 19th

2018 Stewart Gallery Schedule

2018 New Members' Exhibition
November 7th – 23rd

2018 PSC Volunteers Exhibition
December 5th – 19th



**Exhibition space in
the Stewart Gallery
is available for PSC
Members!**

Reserve the gallery by
contacting our
Exhibition Coordinator:
exhibitions@sketchclub.org

The space is \$150 for a
month. Members can
show once in the Stewart
Gallery per year.

[See the 2018 Exhibition Schedule](#)
[Important Dates for all PSC Activities](#)

Sketch Club Activities

Dinner Meeting Friday November 9th, 2018; 5:30 – 9:00 PM

Dinner Open to the Public

Please RSVP to Michelle in the PSC office
Wednesday September 12, 2018.

AGENDA

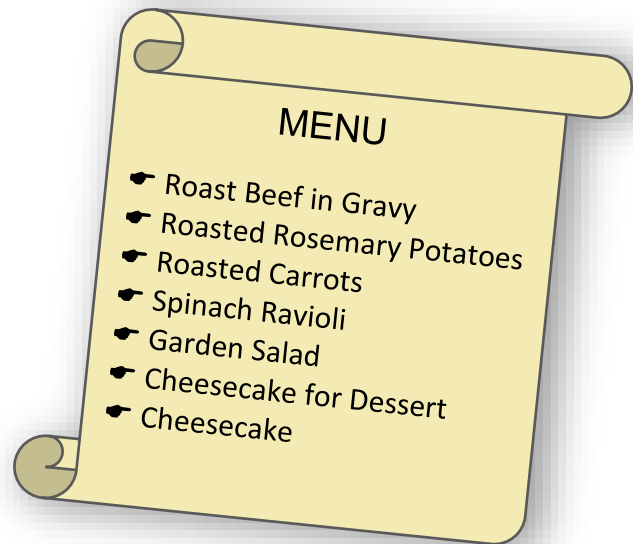
- 5:30- Social Period Begins
- 6:15- Activity
- 7:15- Dinner

DINNER

- Members - \$16
- Guests - \$18

Activity:

- To be Announced



Sketch Club Activities



The Philadelphia Sketch Club's Annual Holiday Party

Saturday December 15th, 2018 • 1 to 4 PM

\$25 per person includes a great selection of hot hors d'oeuvres,
Open Bar, a Philadelphia Sketch Club beer or wine glass,
and PSC's famous Fish House Punch

Holiday Party Open
to PSC Members
and their guests

Stewart
Room Exhibition
Lottery at 3 PM



Music

Annual Purity
League Auction
and Legacy Show
Auction at 4 PM!

215.545.9298
for reservations

Sketch Club Activities

158th Anniversary Gala - October 6, 2018; A great success!

The 158th Anniversary Gala at the PSC was a rousing success. The large crowd enjoyed good company, refreshments and music for a fun-filled evening in support of the PSC. Thank you to all who participated to make the event a success.

Photos: **Ken Weiner**



Honorees left to right:
Patrick Connors, Christine Lafuente and Paul DuSold

See the Gala 2018 Video:

<https://www.youtube.com/watch?v=ivdslmrhvUI>

The PSC thanks **John Thornton** for his Gala 2018 Video

John has been making movies about the annual Sketch Club Gala since 2015 and personally knows many of the artists who have been honored with the Sketch Club Medal. As always, the gala featured great art, great food, terrific artists, and a lot of fun including the Live Auction and the Skethtones rocking out. It was truly a celebration of the Philadelphia art community!

See more of John's work at: <https://www.youtube.com/channel/UCpzCmm7VNsJuBNmB90z7j0w>



PSC President Richard Harrington presiding over all.



Reception festivities

Gallery hours: Wednesday, Friday, Saturday, Sunday: 1 PM to 5 PM

November 2018

Sketch Club Activities

ATTENTION ALL MEMBERS! HELP WANTED FOR EXHIBITIONS!!

Gallery Sitting - for 4 hours on a Saturday or Sunday. Usually meet visitors to the exhibitions, Work on your own art in the large gallery space.



Hanging an exhibition - Usually about four people are needed to hang each exhibition.

Delivery and Pickup - Usually only one person is needed for each job.

Currently about 10 members are doing the exhibition work for the club. We have 200 active members. There are simply not enough volunteers to keep the gallery open on weekends which means visitors will not be able to view the exhibits on a Saturday or Sunday. **THIS IS CRITICAL!** Please think about your commitment to the club. A commitment of 8 hours a year would help to keep the gallery open.

This is one of the best ways to support the PSC. Please consider helping keep the first art club in America alive!!

Contact Jackie Barnett at: jbarnett12@verizon.net or call 267 690 2233

Thanks to PSC member volunteer **Jackie Barnett** for organizing and coordinating PSC volunteers!

Gallery hours: Wednesday, Friday, Saturday, Sunday: 1 PM to 5 PM

November 2018

Sketch Club Activities

Critique Night – November 21st, 2018 from 7:00 – 9:00 PM

Open to PSC Members and Non-Members

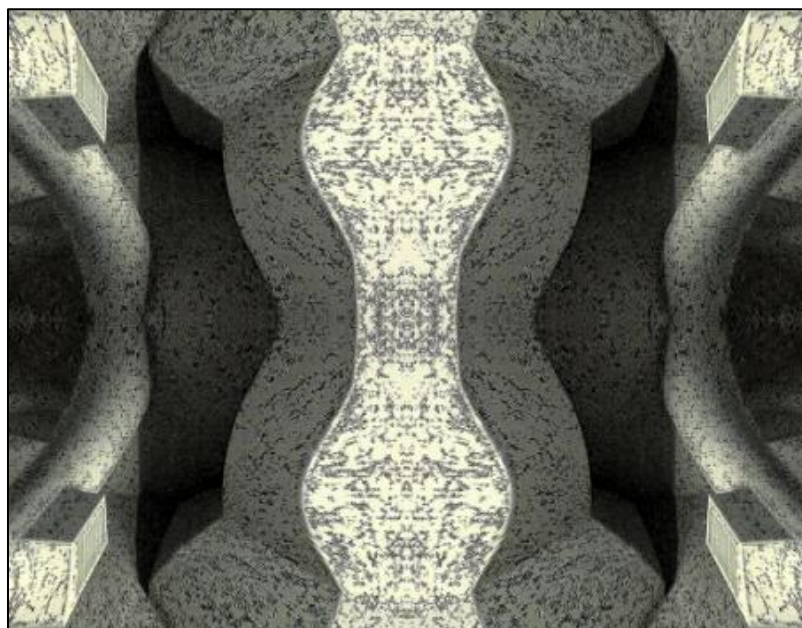
RSVP to **Michelle Lockamy** at 215-545-9298 or
executivedirector@sketchclub.org

Critique Night is held in the Library of the Sketch Club every third Wednesday beginning at 7 PM. Bring work you've finished, work in progress, or just sketches for work you're planning! Photos, digital work, drawings, all mediums are welcome; we can project digital images on a screen for review, so you have the option to show work that may be too big or too heavy to transport to the Club. There is no one individual directing the critique, just your fellow artists and peers. Facilitated/monitored by **Rich Harrington**, PSC President

Thanks to PSC member volunteer **Rich Harrington** for organizing and monitoring this event



Photo Circle– November 8th, 2018 from 6:30 to 8:30 PM



We will discuss new group activities and possibilities for expansion. The Photo Circle meets every 2nd Thursday at 6:30 PM. You can contact Steve anytime at si22@drexel.edu or 215-300-9192 (cell). **Steve Iwanczuk**, Photo Circle Monitor and Member of Philadelphia Sketch Club Board of Directors.

Thanks to PSC member volunteer **Steve Iwanczuk** for organizing and monitoring this event.

Gallery hours: Wednesday, Friday, Saturday, Sunday: 1 PM to 5 PM

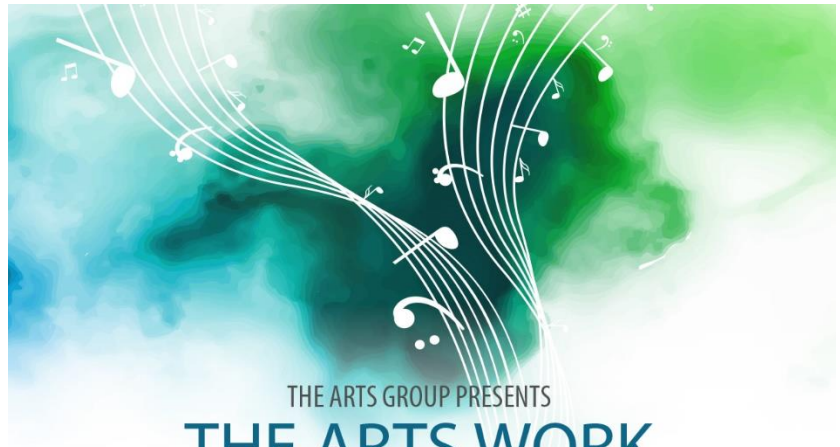
November 2018

Art Natters: Members News

Sketch Club member, **Christina Tarkoff** is involved in an Arts event on November 3, 2018.

Website: christinatarkoff.com

Social: Facebook & Instagram



THE ARTS GROUP PRESENTS THE ARTS WORK

A night full of the arts — music, comedy and drama. Plus works of art (paintings).

— FREE REFRESHMENTS —

Music by Inner Journey featuring
William "Wali" Bickley (f), Alpie Pollitt (p),
Tony Jones (b), Lonnie Berry (d), Lyn Best (v)

SATURDAY, NOVEMBER 3, 2018

STARTS AT 7:00PM

SERA PHI

715 S. 50TH ST

PHILADELPHIA, PA

ADMISSION: \$20 ADVANCE SALES

\$25 AT THE DOOR

Contact Sera Phi for Info & Sales

415.794.2174 267.405.6347

SOCIAL@SERAPHI.ORG



Lyn Best (vocal)



Lolita Rogers (actress)



William "Wali" Bickley (flute)



Alpie Pollitt (piano)



Tony Jones (bass)



Lonnie Berry (drums)



Franklin Nesbit (comedian)



Christina Tarkoff (artist)

Gallery hours: Wednesday, Friday, Saturday, Sunday: 1 PM to 5 PM

November 2018

Art Natters: Members News

Sketch Club member **Claire Lynch** has a two person show at The Hill in Whitmarsh until November 6, 2018.



Claire Lynch

The Hill at Whitmarsh
4000 Fox Hound Drive
Lafayette Hill, PA 19444

Sketch Club member **Su Knoll Horthy** is in a Group Exhibition at the RH Gallery in Delaware



Intersection A Group Exhibition

Claes Gabriel, Santiago Galeas, Phyllis Gorsen, Su Knoll Horthy, Michele Kishita, and Jay Walker

Hockessin, DE – RH Gallery 1304 Old Lancaster Pike Suite D, Hockessin, DE, is pleased to announce a group exhibition, *Intersection*, running from November 5, 2018 – November 29, 2018

The gallery's opening reception will be held on Friday, November 9th from 6:00-9:00 p.m.

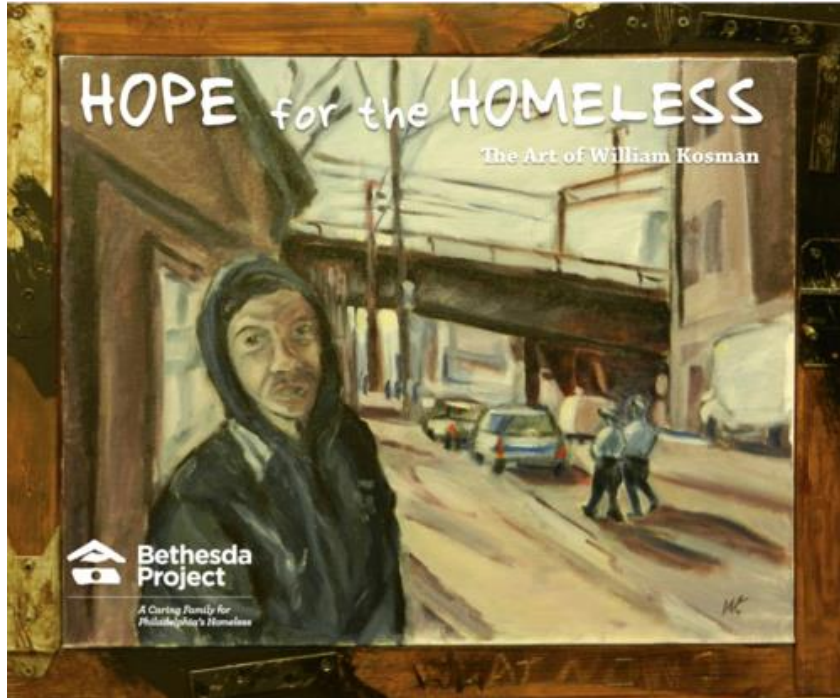
Intersection is an exhibition representing works that are at the crossroads of where abstraction traverses representation. Curated by Phyllis Gorsen, the show includes six artists, all from the Philadelphia area: Claes Gabriel, Santiago Galeas, Phyllis Gorsen, Su Knoll Horthy, Michele Kishita, and Jay Walker. Using differing mediums, the show explores a variety of ways representation and abstraction blend to transform work into stirring imagery, exciting the eye and arousing curiosity. While some of the representational elements are broadly recognized, they are filtered through the lens of each artist, exposing individual personal narratives such as identity, life experiences, and cultural beliefs.

Gallery hours: Wednesday, Friday, Saturday, Sunday: 1 PM to 5 PM

November 2018

Art Natters: Members News

Philadelphia painter and Sketch Club member **William Kosman** will exhibit 23 paintings of Philadelphia and Normandy, France, in the exhibit “Hope for the Homeless.”



The exhibit will take place at the [RoxArt Gallery](#), located at 6120 Ridge Ave., Philadelphia, PA 19128, with an opening reception on Nov. 2 from 5pm to 7pm and then weekdays from 10am to 6pm through Nov. 30.

Kosman will contribute all his proceeds from the exhibit to Bethesda Project, a Philadelphia homeless services nonprofit that has provided support, shelter and housing for thousands of individuals experiencing homelessness since 1979.

In the past, Kosman has donated paintings to raise money for the Alliance Francaise of Philadelphia,

the French International School of Philadelphia, and the North City Congress. The contribution to the North City Congress also included the works of seven other artists, in a program sponsored by the Philadelphia Sketch Club.

More about William Kosman, Painter: www.williamkosman.blogspot.com and www.williamkosman.com, and he can be contacted at billkosman@gmail.com and 215-280-9580. His rap videos can be viewed at www.youtube.com/billkosman

More About Bethesda Project: www.bethesdaproject.org

More About The RoxArt Gallery: 6120 Ridge Ave., Philadelphia, PA 19128, 215-508-2358 (www.roxboroughpa.com).

More About the Manayunk Roxborough Art Center: www.mrartcenter.org

Gallery hours: Wednesday, Friday, Saturday, Sunday: 1 PM to 5 PM

November 2018

Art Natters: Members News

Together with Claudia Fouse Fountaine, PSC member **Laura Rutherford Renner** will be exhibiting work as featured artists in the ARTISTS' GALLERY at 18 Bridge Street in Lambertville, New Jersey.



On Track, 12" X 12" oil on wood; 2018

Laura Rutherford Renner is an artist whose paintings on wood depict contemporary life in New Jersey

and Pennsylvania. Her work has been included in various juried exhibitions, including the iconic

Philadelphia Sketch Club. In addition to her painting career, Laura is a practicing Occupational Therapist.

This show is currently on exhibit through November

Gallery hours: Wednesday, Friday, Saturday, Sunday: 1 PM to 5 PM

November 2018

Sketch Club Open Workshop Schedule

All workshops are open to the public. There is no need to register before attending. You do NOT have to be a member of the Philadelphia Sketch Club to participate in the workshops. Our workshops are open to anyone who is interested in drawing, painting or printmaking. All skill levels are welcome. Fees: Model workshops: \$8/session members, \$9/session for non-PSC members; Printmaking workshop: \$10/session; All workshops \$6 for full-time students. Monitored by PSC members.

Life Model	Costumed Model	Printmaking
<p>Mondays – Extended pose (multi-session): 6:30 PM-9:30PM</p> <p>Monitors: Robert Bohne, Vince Docktor, Dan Kuetemeyer</p> <p>Tuesdays – Extended pose: 12:00 PM to 3:00 PM Monitor: Jacqueline Barnett</p> <p>Wednesdays – Extended pose: 6:30 to 9:30 PM Monitor: Vince Docktor</p> <p>Saturdays – Extended pose: 9:30 AM to 12:30 PM Monitor: Vince Docktor</p>	<p>Thursdays</p> <p>Extended pose</p> <p>12:00 PM to 3:00 PM Monitor: Bob Bohne.</p>	<p>Tuesdays</p> <p>10:00 AM to 2:00 PM Monitor: Elizabeth H. MacDonald</p>

Please Note: Those who use oil paints should bring their own container(s) to remove used solvents. Odorless solvents only.

Thank you to all the PSC members who donate their time and expertise to make these workshops available to PSC members and the Philadelphia art community.

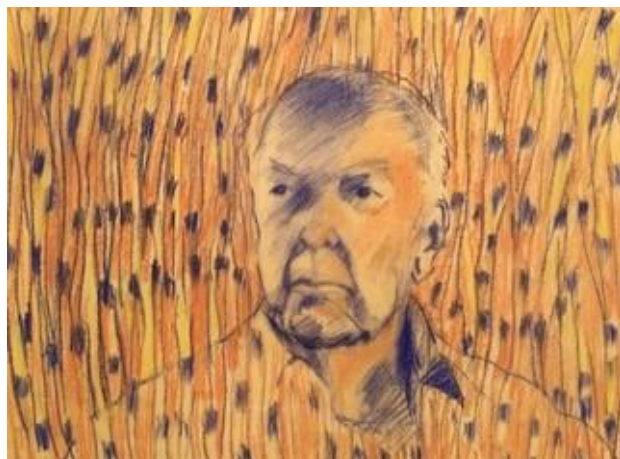
Opportunities/Notices

As a courtesy to our non-PSC-member friends, in support of the Philadelphia artist community, we publish your notices, etc., free of charge. However, contributions to the PSC are always welcome and we will gladly consider your application for membership

[Contribute to the Sketch Club Here](#) [Apply for PSC Membership Here](#)

Judy Engle is happy to announce that at long last she is opening her “new” studio! The date is Sunday, November 4th; the time is 12 to 5. The occasion is a gala open house at The Mill Studios—123 Leverington Avenue in Manayunk—where she is in studio M-7. She will be mounting something like a “retrospective,” a look at the kinds of work she’s been doing since 1989. For several reasons, she is now in the process of scaling back “my brilliant career.” Consequently, everything will be not only for sale but also on sale. And of course, there will be refreshments

Edward Bell is preparing for a series of paintings I’ll be doing on Jasper Johns. Here is Jasper in Bamboo



Jasper in Bamboo

Edward has also written an article about the Sketch Club for the OutdoorPainter magazine entitled Plein Air Community Spotlight: The Philadelphia Sketch Club. Here’s a link: <https://www.outdoorpainter.com/plein-air-community-spotlight-philadelphia-sketch-club/>

Free or Inexpensive Art Supplies

A long-term working artist from NJ has a 2-story studio of supplies to unload. Drawing tables, easels, paint, drawing and art supplies of all kind. Widowed wife is letting go of it all. Please email Paint@NicoleBlankArt.com for information

Membership

Recent New PSC Members

The Sketch Club welcomes new members recently approved by the Board of Directors.

- Thomas Rogers
- Donna Wells
- Laura Marconi
- Chris Davis
- Eric Sorensen
- Sara Benton

Current Sketch Club members can review new member applications at: <http://sketchclub.org/member-applications/>. The members only section and documents are password protected. If you've forgotten the password, please contact Ken Weiner at: membership@sketchclub.org.

Not a PSC Member?: Join Now!

If you're reading this edition of the Portfolio and you're not a member of the PSC, you should consider joining the more than 200 other Philadelphia area artists who have. The PSC is one of the most active visual art venues serving center city Philadelphia. The PSC is a hands-on organization that offers its members the opportunity to participate in all aspects of creating and presenting work to the public. It presents over 20 scheduled group and solo exhibitions annually and offers a wide range of daily workshops. [Get info and an application here.](#)

If you are a member of the PSC, please feel free to share the Portfolio with your artist friends and encourage them to become members.

Membership Renewal

You can check the status of your membership by going to the Current Members page on the PSC web-site: <http://sketchclub.org/sample-page/memberspace/>. All current members are listed. An asterisk (*) means that the membership has expired but is within the 60-day grace period for renewal. Names in red are active links to the individual's web site.

Renew Now! <http://sketchclub.org/annual-dues-payment/>

If you have any questions about your membership, please don't hesitate to contact us at membership@sketchclub.org or call the office: 215-545-9298.

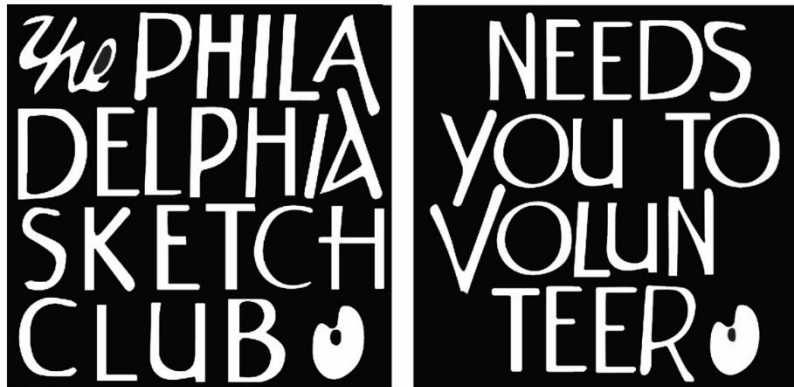
Gallery hours: Wednesday, Friday, Saturday, Sunday: 1 PM to 5 PM

November 2018

Volunteer

We Need You!

The Philadelphia Sketch Club is managed entirely by volunteers except for the gallery manager, housekeeping, and bookkeeper.



The PSC always needs volunteer members. Volunteering is one of the most important aspects of being a Sketch Club member and it is the one of the best ways to take advantage of the PSC. You'll be working with colleagues who share the same interests and helping the PSC provide unique services to the visual arts community. Sign up for an activity today.

Here are some of the activities volunteers perform:

- Chair exhibitions
- Assist in hanging exhibitions
- Covering exhibition drop-offs and pick-ups
- Monitor workshops
- Assist with presentations
- Serve on the Board of Directors
- Serve as Key Circle volunteers
- Publish the Portfolio
- Manage the PSC web site
- Gallery coverage
- Graphics for Portfolio, PSC web site, social media
- Assist in every aspect of managing the club and providing member services

To get involved, contact:

Jackie Barnett

Volunteer Coordinator

Philadelphia Sketch Club

jbarnett12@verizon.net

Gallery hours: Wednesday, Friday, Saturday, Sunday: 1 PM to 5 PM

November 2018

Support the Sketch Club

Contribute

Please consider making your tax-deductible contribution now. These funds will be put to good use providing enhanced services to our members and friends.

Membership dues cover only a small portion of the PSC's operating expenses. Competition for funding for arts organizations like the Sketch Club is increasingly competitive and total funding for the arts is shrinking. Your additional support will keep the PSC an active support for visual artists in the Metropolitan Philadelphia area. The Philadelphia Sketch Club is an IRS designated 501(c) (3) non-profit organization.

You can call the office at 215-545-9298, mail checks to the Sketch Club or visit the Contribute page of our Website.

Visit our **Contribute** page of our website to give online at:

<http://sketchclub.org/support-us/>

You can also support the PSC on an ongoing basis when you shop on Amazon. Go to:

<http://smile.amazon.com/> and enter the Philadelphia Sketch Club in the Pick your own charitable organization box.

Your support makes it possible for the PSC to continue providing ongoing daily workshops and numerous annual gallery exhibitions.



Sketch Club Members receive a
25% discount at Merion Art.
Use promo code "PSC"
online at www.merionart.com

"Our staff of experienced artists, custom framers, and designers can answer your art materials questions and help to creatively solve all your artistic problems. Stop in our store for personalized friendly attention, or go to merionart.com for access to thousands of quality art products!"

Monday - Friday: 8:30am - 6:00pm
Saturday: 9:00am - 5:30pm
Sunday: 12:00pm - 5:00pm

Merion Art & Repro Center
17 West Lancaster Avenue
Ardmore, PA 19003

(610) 896-6161 - Phone
(610) 896-7781 - Fax

Gallery hours: Wednesday, Friday, Saturday, Sunday: 1 PM to 5 PM

November 2018

Support the Sketch Club

PHOTOLounge

The **PHOTOLounge** supports the Philadelphia Sketch Club and its members:

Sketch Club Members receive a 15% discount at PHOTOLounge.

Use online promo code "sketch".

The PHOTOLounge is located at 1909 Chestnut St. Philadelphia PA 19103.

For nearly 20 years, PHOTOLounge's focus has been the simple idea that pictures should be beautiful, affordable, and long lasting. We're a very adept photo lab with diverse services from iPhone printing to shoebox scanning. You can bring us film for processing, and also order prints online, or from the App. Come in and print your world.

Sketch Club Members receive a 15% discount at PHOTOLounge.

Use online promo code "sketch".

267-322-6651 – www.myphotolounge.com

Sketch Club members receive 20% discount



Framing Family Treasures for over 20 Years



We offer a variety of framing materials and techniques including:

- Archival / conservation treatment • Specialty mats (Linen, Suede, Silk)
- Stretching / Blocking of needleart and oils
- 1000's of moulding choices • 22 karat finished corner frames • Memorabilia framing
- Custom toning / coloring • Decorative mat cuts • French matting • Fillets
- Mirrors • Shadowboxing • Dry Mounting

www.CanalFrame.com • CanalFrame@comcast.net • 215-493-3660

1093 General Greene Road, Washington Crossing, PA 18977

Gallery hours: Wednesday, Friday, Saturday, Sunday: 1 PM to 5 PM

November 2018

Support the Sketch Club

Like, Link & Share

If you're not following the Philadelphia Sketch Club on Facebook re-tweeting Sketch Club tweets yet, it's time that you did. We have well over 2000 Facebook followers. Get the word out about the Sketch Club. Please click the like button and share your comments and invite your friends to like our page.

Follow @PhilaSketchClub on Twitter, we have almost 400 followers. Please click the heart button and re-tweet our announcements.

Include links on your website, blogs and social media to The Philadelphia Sketch Club to increase traction across social media platforms.

Follow us on Facebook, Twitter and Instagram now!

Thanks to Don Brewer and Michelle Lockamy for managing PSC social media sites.



Member Classifieds

Seeking Framers

Sketch Club members frequently ask about framing services. If you wish to provide framing services to PSC members, please contact the PSC at info@sketchclub.org or call the PSC office: 215 545-92908



Gallery hours: Wednesday, Friday, Saturday, Sunday: 1 PM to 5 PM

November 2018

The Portfolio: The newsletter of the Philadelphia Sketch Club is published monthly. Editor: Ken Weiner; Technical support and Web Master: Ken Weiner. Send your member news, announcements and corrections to portfolio@sketchclub.org. The due date for all materials is one week before the end of the month.

Back issues of the Portfolio are available at: <http://sketchclub.org/portfolio-archive/>

Thanks to PSC member volunteer **Ken Weiner** for his ongoing support of Sketch Club technology and communications functions.

The Philadelphia Sketch Club

235 S Camac Street
Philadelphia, PA 19107
(215) 545-9298
<http://sketchclub.org/>
executivedirector@sketchclub.org

Gallery Manager: Michelle Lockamy

Officers:

- President: Richard Harrington
- Vice President: Kenneth Weiner
- Secretary: Fran Carter
- Treasurer: William Patterson

Board of Directors

- Michael Fernandez
- Jacqueline Barnett
- Stephen Iwanczuk
- Kevin Myers
- Charles F. Tarr
- Elise Anzini