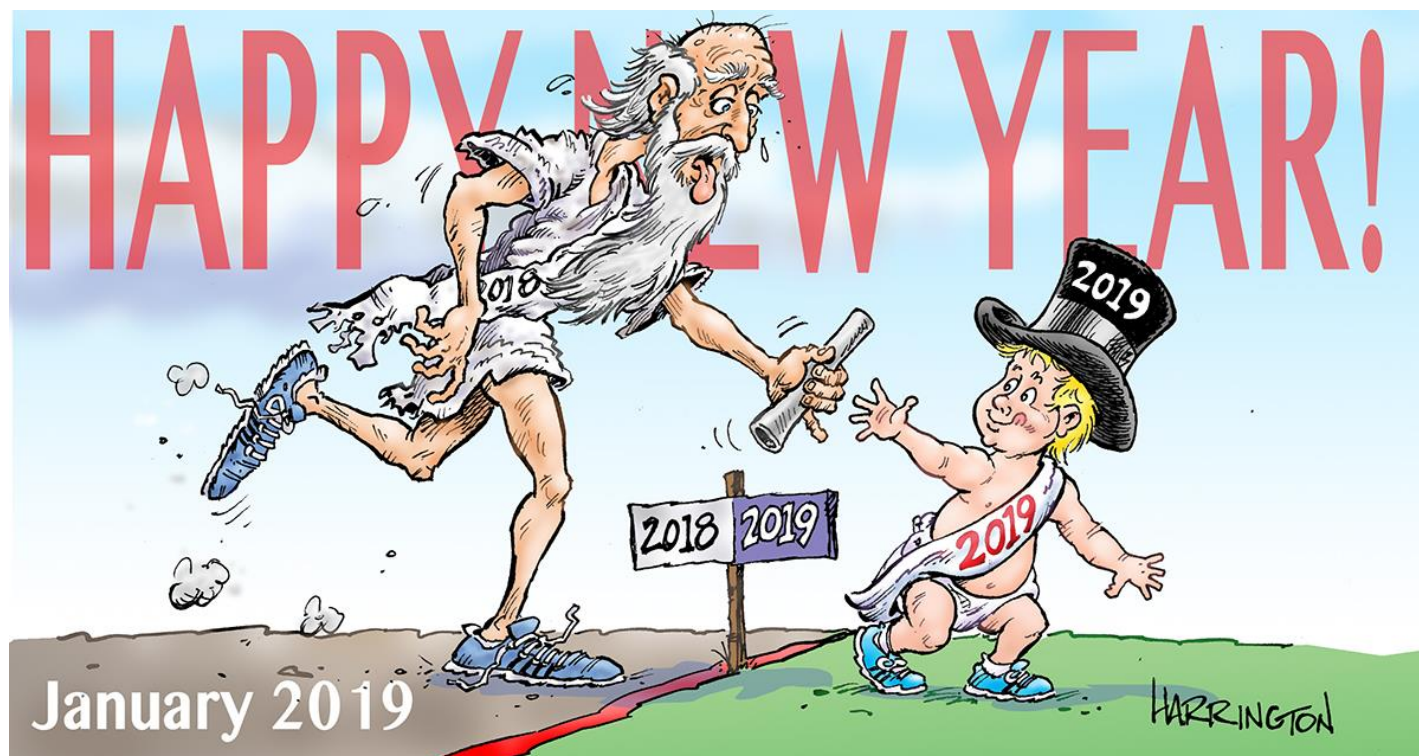


Gallery hours: Wednesday, Friday, Saturday, Sunday: 1 PM to 5 PM

January 2019



Rich Harrington

This Month's Portfolio

Main Gallery Schedule	2
Stewart Gallery Schedule	4
Sketch Club Activities	5
Art Natters: Members News	8
Sketch Club Open Workshop Schedule	12
Opportunities/Notices	13
Membership	14
Volunteer	15
Support the Sketch Club	16
Member Classifieds	18

Send your member news, announcements and corrections to portfolio@sketchclub.org. The deadline for ALL submissions is 1-week before the end of the month.

Reminder: It's never too late. You can always renew your membership

You may pay online at <http://sketchclub.org/annual-dues-payment/>

or mail your check to:

The Philadelphia Sketch Club

235 S. Camac St.

Philadelphia, PA 19107

For questions please contact the Gallery Manager at 213335-545-9298 or email:

executivedirector@sketchclub.org

Late Breaking News – See items that were submitted after the publication date. Go to:

info@sketchclub.org

The PSC general email is: info@sketchclub

Gallery hours: Wednesday, Friday, Saturday, Sunday: 1 PM to 5 PM

January 2019

Main Gallery Schedule

[See the 2019 Exhibition Schedule](#)

[Important Dates for all PSC Activities](#)

In the Main Gallery

2019 Annual Domenic DiStefano Memorial Works on Paper Exhibition

January 2 – 31

Reception: Sunday, Jan 20, 2 - 4 pm, 2019



2018 First Place: Idaherma Williams "Candelabra"

Gallery hours: Wednesday, Friday, Saturday, Sunday: 1 PM to 5 PM

January 2019

Main Gallery Schedule

Coming in February

THE SCHOOL DISTRICT OF PHILADELPHIA & THE PHILADELPHIA SKETCH CLUB present:

The 35th Annual HIGH SCHOOL ART SHOW

February 10-24, 2019



The Judges' Choice, PSC High School Art Show 2018: Tiyanne Abdullah-Quinones, Frankford High School

Reception and Awards Ceremony

Sunday, February 24, 2019, 2:00 – 3:30 PM

at

THE PHILADELPHIA SKETCH CLUB

See entry details in Sketch Club activities below.

235 South Camac Street
Philadelphia, PA 19107
(Between 12th & 13th Streets and
Locust & Spruce Streets)

Gallery Hours: Wed., Fri., Sat., Sun., 1-5 PM
www.sketchclub.org 215-545-9298

Gallery hours: Wednesday, Friday, Saturday, Sunday: 1 PM to 5 PM

January 2019

Stewart Gallery Schedule

Dori Spector: Solo Show

January 2 – 31

Reception:
Sunday, Jan 20, 2019,
2 – 4 pm



**Exhibition space in
the Stewart Gallery
is available for PSC
Members!**

Reserve the gallery by
contacting our
Exhibition Coordinator:
exhibitions@sketchclub.org

The space is \$150 for a
month. Members can
show once in the Stewart
Gallery per year.

[See the 2019 Exhibition Schedule](#)

[Important Dates for all PSC Activities](#)

Gallery hours: Wednesday, Friday, Saturday, Sunday: 1 PM to 5 PM

January 2019

Sketch Club Activities

Announcing: The 35th Annual 2019 School District of Philadelphia HS Art Show at the Philadelphia Sketch Club

Collaborating to provide the
2019 HIGH SCHOOL ART SHOW February 10-24, 2019

DELIVERY AND HANGING BY INVITED HS ART TEACHERS:

- Monday, February 4, 2019, 3:00 – 6:00 PM
- Tuesday, February 5, 2019, 3:00 – 6:00 PM
- Wednesday, February 6, 2019, 3:00 – 6:00 PM

RECEPTION,

- AWARDS: Sunday, February 24, 2019, 2:00-3:30 PM
- TAKE DOWN: Sunday, February 24, 2019, 3:30- 5:00 PM

JUDGING FOR AWARDS:

- Saturday, February 9, 2019, 12:30 – 5:00 PM

JUDGES:

- John Schmiechen, Accomplished Artist, Painter of Oils
- Ted Lewis, Exhibit Curator
- Joanne Hirsh, BS Art Ed, Moore College of Art, MA Art History, Univ. of Penn, Art Teacher, Cheltenham HS & Abington HS, Art History Professor, Temple University and Manor College

Hello Members,

Once again it is time to start planning for the High School Art Show (2019). As usual, we will be asking our loyal generous members for tax deductible contributions for awards for the young artists' artwork. The same procedure is still in place. Please make your check out to the "Philadelphia Sketch Club", with a note in the lower left corner, "HS Art Show Award", and mail it or bring it to the PSC office, Michelle Lockamy, Executive Director. Her hours are Wed., and Fri.!!:00-5:00PM. Also, notify the amount of your award (s) to Dorothy Roschen, in person, by Phone (215 848 3257), or email (droschen@me.com). Any amount is gratefully needed and appreciated. We do like each awardee to receive at least \$ 25.00. To achieve this, we combine donors for one award and some donors give multiple awards. Every donor is recognized on a posted complete awards list in the gallery, which is also in the catalogue. (Award amounts are not posted.) **THE CUT-OFF DATE FOR DONATING AWARDS IS Thursday, FEBRUARY 7, 2019.**

Deborah Klose, Director of Art Education, School District of Philadelphia, will send the call to entry letters to all School District High School Art Teachers (no charter schools). Usually, about 25-30 teachers respond, and they bring and hang 5 labeled pieces each from their classrooms.

To volunteer to help the Art Teachers hang the work on delivery days (Feb. 4,5,6) let Dorothy know or to sign up-go to the "Volunteers" under the Membership tab on the PSC website. Food donations for the reception (Feb. 24) will be asked for closer to that date.

The student work is not for sale

Thank you, Members, for your wonderful support for this show. It would be absolutely impossible without you.

Sincerely,

Dorothy Roschen, Chair, 2019 HS Art Show, (215 848 3257), droschen@me.com, and Committee Deborah Klose, Director of Art Education, School District of Philadelphia

Gallery hours: Wednesday, Friday, Saturday, Sunday: 1 PM to 5 PM

January 2019

Sketch Club Activities

Dinner Meeting:



No Dinner Meeting this Month

The next Dinner Meeting will be February 8, 2019

Watch for details in the February 2019 edition of the Portfolio.

ATTENTION ALL MEMBERS! HELP WANTED FOR EXHIBITIONS!!

Gallery Sitting - for 4 hours on a Saturday or Sunday. Usually meet visitors to the exhibitions, Work on your own art in the large gallery space.

Hanging an exhibition - Usually about four people are needed to hang each exhibition.



Delivery and Pickup - Usually only one person is needed for each job.

Currently about 10 members are doing the exhibition work for the club. We have 200 active members. There are simply not enough volunteers to keep the gallery open on weekends which means visitors will not be able to view the exhibits on a Saturday or Sunday. **THIS IS CRITICAL!** Please think about your commitment to the club. A commitment of 8 hours a year would help to keep the gallery open.

This is one of the best ways to support the PSC. Please consider helping keep the first art club in America alive!!

Contact Jackie Barnett at: jbarnett12@verizon.net or call 267 690 2233

Thanks to PSC member volunteer **Jackie Barnett** for organizing and coordinating PSC volunteers!

Gallery hours: Wednesday, Friday, Saturday, Sunday: 1 PM to 5 PM

January 2019

Sketch Club Activities

Critique Night – January 16th, 2019 from 7:00 – 9:00 PM

Open to PSC Members and Non-Members

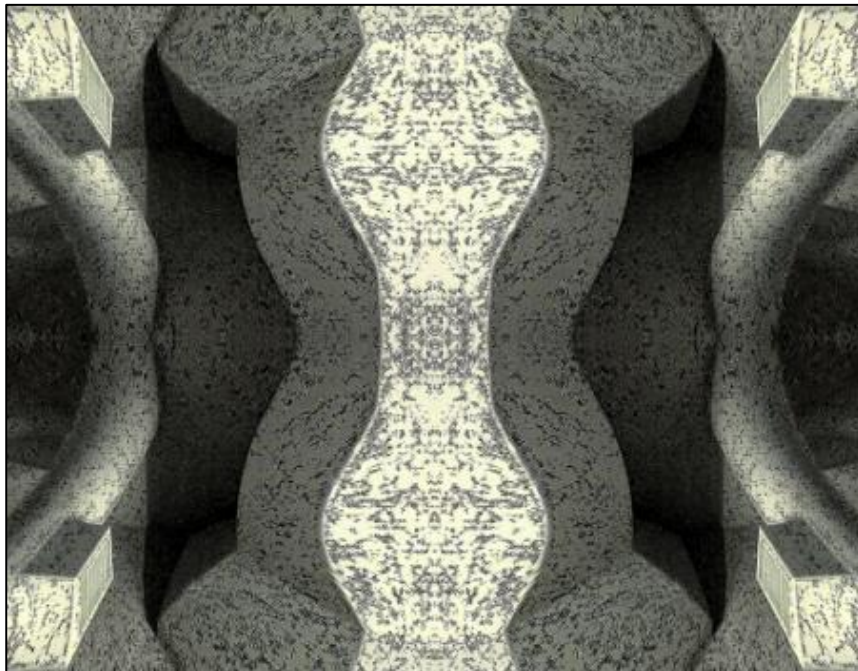
RSVP to Michelle Lockamy at 215-545-9298 or
executivedirector@sketchclub.org

Critique Night is held in the Library of the Sketch Club every third Wednesday beginning at 7 PM. Bring work you've finished, work in progress, or just sketches for work you're planning! Photos, digital work, drawings, all mediums are welcome; we can project digital images on a screen for review, so you have the option to show work that may be too big or too heavy to transport to the Club. There is no one individual directing the critique, just your fellow artists and peers. Facilitated/monitored by Rich Harrington, PSC President



Thanks to PSC member volunteer **Rich Harrington** for organizing and monitoring this event

Photo Circle– January 10th, 2019 from 6:30 to 8:30 PM



We will discuss new group activities and possibilities for expansion. The Photo Circle meets every 2nd Thursday at 6:30 PM. You can contact Steve anytime at si22@drexel.edu or 215-300-9192 (cell). **Steve Iwanczuk**, Photo Circle Monitor and Member of Philadelphia Sketch Club Board of Directors.

Thanks to PSC member volunteer **Steve Iwanczuk** for organizing and monitoring this event.

Gallery hours: Wednesday, Friday, Saturday, Sunday: 1 PM to 5 PM

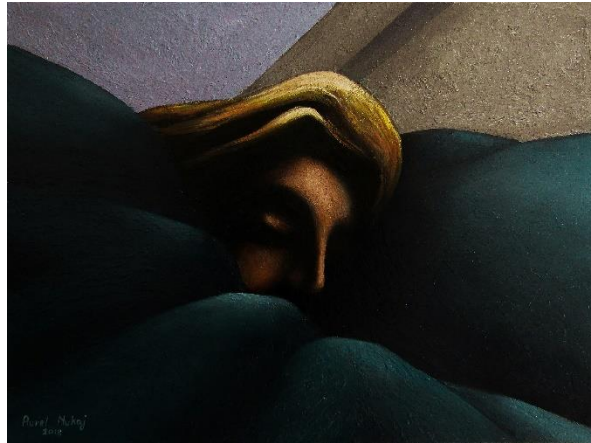
January 2019

Art Natters: Members News

PSC member **Aurel Nukaj**



T 267-684-8354
W www.aurel-nukaj.com
W www.design.aurel-nukaj.com
A Lansing ST, 19136 Philadelphia, PA



"The morning light"_(18x24 inch)_(Oil on canvas_2018)



"The Night Visitor" (18x24 inch) (Oil on canvas_2018)

Both paintings are part of the Painting Series called "Hypnos"(according to Greek God of Sleep), inspired by our daily rituals like sleeping and dreaming.

PSC member **Susan Shipley** participated in a show at City Hall, with Women's Caucus for the Arts -WCA and women's Holler on 1-14-19 to 3-22-19. She also had works accepted to the Sketch Club, Works on Paper Exhibition, 1-2-19 to 1-31-19.

Gallery hours: Wednesday, Friday, Saturday, Sunday: 1 PM to 5 PM

January 2019

Art Natters: Members News

PSC member **Alice Chung** has exhibition of "Big Impact" small work at The 431 Art Gallery in King of Prussia now through Jan 16, 2019.



Also, she is exhibiting at Einstein Braemer Art Building Gallery now through March 14, 2019

She had 2nd prize award at GNAL Theme Show.

PSC Member **Rob Finn** will be teaching a plain-air watercolor class August 4-10, 2019 at College of the Atlantic in Bar Harbor, Maine. Room and board are provided for a fraction of the market rate for lodging in this fabulous Summer vacation spot!

During the week the class will explore COA's beautiful seaside campus and nearby scenic areas in Bar Harbor and Mount Desert Island. Paper, paint, and brushes will be provided.



Plein-Air Watercolor Painting



For more information: [Plein-Air Watercolor Painting](#)

Gallery hours: Wednesday, Friday, Saturday, Sunday: 1 PM to 5 PM

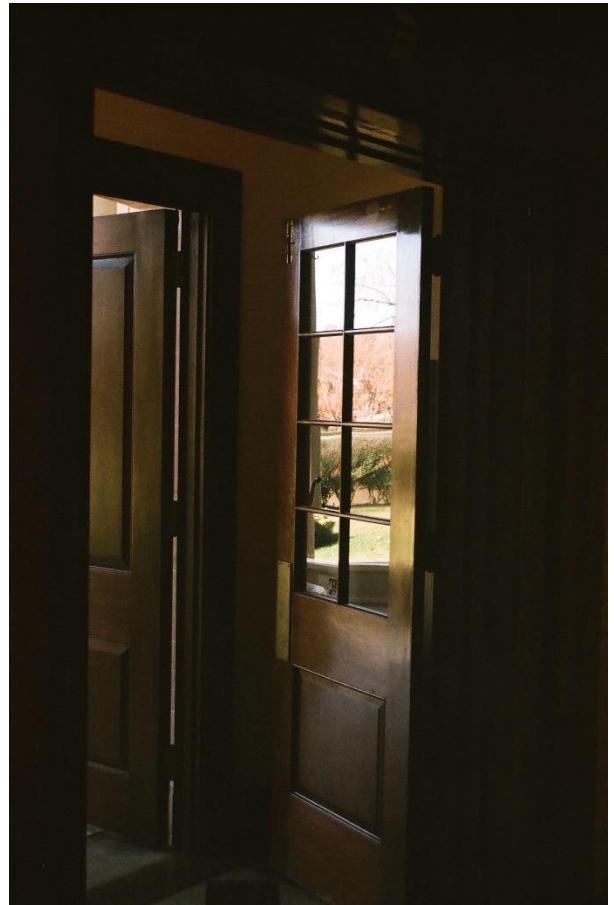
January 2019

Art Natters: Members News

PSC member, **Chris Fowler** has pieces going into two juried shows upcoming. One is the Hill Center Regional Exhibition at the Hill Center Gallery, 921 Pennsylvania Avenue SE, in Washington DC, where my piece "The Moore" will be on display. And the second is a show called "The Other Door" held at CORE Contemporary in Las Vegas which accepted "Without Flash"



The Moore



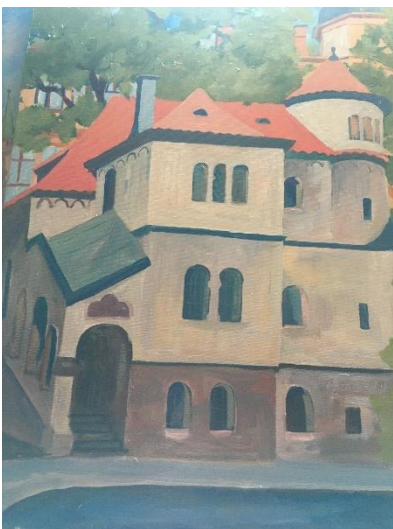
Without Flash

Gallery hours: Wednesday, Friday, Saturday, Sunday: 1 PM to 5 PM

January 2019

Art Natters: Members News

PSC member, **Diane Hark** had four original acrylic paintings from Prague and Budapest selected and offered for auction at the major fundraiser coming up in April at Temple Beth Hillel in Wynnewood. Diane painted these selected Canvases as a remembrance of her historical trip to Eastern Europe visiting WW11 sites Prague Synagogue, Art Colony from Budapest, clock tower center of Prague we're part of that visit.



Gallery hours: Wednesday, Friday, Saturday, Sunday: 1 PM to 5 PM

January 2019

Sketch Club Open Workshop Schedule

All workshops are open to the public. There is no need to register before attending. You do NOT have to be a member of the Philadelphia Sketch Club to participate in the workshops. Our workshops are open to anyone who is interested in drawing, painting or printmaking. All skill levels are welcome. Fees: Model workshops: \$8/session members, \$9/session for non-PSC members; Printmaking workshop: \$10/session; All workshops \$6 for full-time students. Monitored by PSC members.

Life Model	Costumed Model	Printmaking
<p>Mondays – Extended pose (multi-session): 6:30 PM-9:30PM</p> <p>Monitors: Robert Bohne, Vince Docktor, Dan Kuetemeyer</p> <p>Tuesdays – Extended pose: 12:00 PM to 3:00 PM Monitor: Jacqueline Barnett</p> <p>Wednesdays – Extended pose: 6:30 to 9:30 PM Monitor: Vince Docktor</p> <p>Saturdays – Extended pose: 9:30 AM to 12:30 PM Monitor: Vince Docktor</p>	<p>Thursdays</p> <p>Extended pose 12:00 PM to 3:00 PM Monitor: Bob Bohne.</p>	<p>Tuesdays</p> <p>10:00 AM to 2:00 PM Monitor: Elizabeth H. MacDonald</p>

Please Note: Those who use oil paints should bring their own container(s) to remove used solvents. Odorless solvents only.

Thank you to all the PSC members who donate their time and expertise to make these workshops available to PSC members and the Philadelphia art community.

Gallery hours: Wednesday, Friday, Saturday, Sunday: 1 PM to 5 PM

January 2019

Opportunities/Notices

Larry Francis is exhibiting at the Gross McCleaf Gallery

Opening Reception: Friday, January 4, 5 - 7 pm
Gross McCleaf Gallery 127 S. 16th Street
Philadelphia, Pa 19102



Turning Bridge 18 x 36 - oil on canvas

From freelance artist **Paul Williams**



As a courtesy to our non-PSC-member friends, in support of the Philadelphia artist community, we publish your notices, etc., free of charge. However, contributions to the PSC are always welcome and we will gladly consider your application for membership

[Contribute to the Sketch Club Here](#) [Apply for PSC Membership Here](#)

Membership

Not a PSC Member?: Join Now!

If you're reading this edition of the Portfolio and you're not a member of the PSC, you should consider joining the more than 200 other Philadelphia area artists who have. The PSC is one of the most active visual art venues serving center city Philadelphia. The PSC is a hands-on organization that offers its members the opportunity to participate in all aspects of creating and presenting work to the public. It presents over 20 scheduled group and solo exhibitions annually and offers a wide range of daily workshops. [Get info and an application here.](#)

If you are a member of the PSC, please feel free to share the Portfolio with your artist friends and encourage them to become members.

Membership Renewal

You can check the status of your membership by going to the Current Members page on the PSC web-site: <http://sketchclub.org/sample-page/memberspace/>. All current members are listed. An asterisk (*) means that the membership has expired but is within the 60-day grace period for renewal. Names in red are active links to the individual's web site.

Renew Now! <http://sketchclub.org/annual-dues-payment/>

If you have any questions about your membership, please don't hesitate to contact us at membership@sketchclub.org or call the office: 215-545-9298.

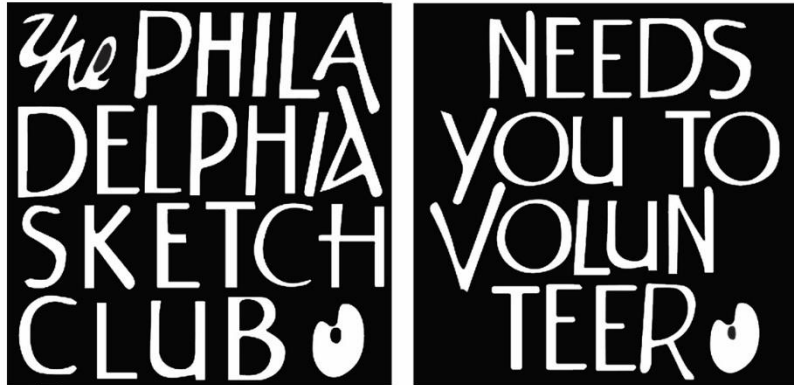
Gallery hours: Wednesday, Friday, Saturday, Sunday: 1 PM to 5 PM

January 2019

Volunteer

We Need You!

The Philadelphia Sketch Club is managed entirely by volunteers except for the gallery manager, housekeeping, and bookkeeper.



The PSC always needs volunteer members. Volunteering is one of the most important aspects of being a Sketch Club member and it is the one of the best ways to take advantage of the PSC. You'll be working with colleagues who share the same interests and helping the PSC provide unique services to the visual arts community. Sign up for an activity today.

Here are some of the activities that volunteers perform:

- Chair exhibitions
- Assist in hanging exhibitions
- Covering exhibition drop-offs and pick-ups
- Monitor workshops
- Assist with presentations
- Serve on the Board of Directors
- Serve as Key Circle volunteers
- Publish the Portfolio
- Manage the PSC web site
- Gallery coverage
- Graphics for Portfolio, PSC web site, social media
- Assist in every aspect of managing the club and providing member services

To get involved, contact:

Jackie Barnett

Volunteer Coordinator

Philadelphia Sketch Club

jbarnett12@verizon.net

Gallery hours: Wednesday, Friday, Saturday, Sunday: 1 PM to 5 PM

January 2019

Support the Sketch Club

Contribute

Please consider making your tax-deductible contribution now. These funds will be put to good use providing enhanced services to our members and friends.

Membership dues cover only a small portion of the PSC's operating expenses. Competition for funding for arts organizations like the Sketch Club is increasingly competitive and total funding for the arts is shrinking. Your additional support will keep the PSC an active support for visual artists in the Metropolitan Philadelphia area. The Philadelphia Sketch Club is an IRS designated 501(c) (3) non-profit organization.

You can call the office at 215-545-9298, mail checks to the Sketch Club or visit the Contribute page of our Website.

Visit our **Contribute** page of our website to give online at:

<http://sketchclub.org/support-us/>

You can also support the PSC on an ongoing basis when you shop on Amazon. Go to:

<http://smile.amazon.com/> and enter the Philadelphia Sketch Club in the Pick your own charitable organization box.

Your support makes it possible for the PSC to continue providing ongoing daily workshops and numerous annual gallery exhibitions.



Sketch Club Members receive a
25% discount at Merion Art.
Use promo code "PSC"
online at www.merionart.com

"Our staff of experienced artists, custom framers, and designers can answer your art materials questions and help to creatively solve all your artistic problems. Stop in our store for personalized friendly attention, or go to merionart.com for access to thousands of quality art products!"

Monday - Friday: 8:30am - 6:00pm
Saturday: 9:00am - 5:30pm
Sunday: 12:00pm - 5:00pm

Merion Art & Repro Center
17 West Lancaster Avenue
Ardmore, PA 19003

(610) 896-6161 - Phone
(610) 896-7781 - Fax

Gallery hours: Wednesday, Friday, Saturday, Sunday: 1 PM to 5 PM

January 2019

Support the Sketch Club

PHOTOLounge

The **PHOTOLounge** supports the Philadelphia Sketch Club and its members:

Sketch Club Members receive a 15% discount at PHOTOLounge.

Use online promo code "sketch".

The PHOTOLounge is located at 1909 Chestnut St. Philadelphia PA 19103.

For nearly 20 years, PHOTOLounge's focus has been the simple idea that pictures should be beautiful, affordable, and long lasting. We're a very adept photo lab with diverse services from iPhone printing to shoebox scanning. You can bring us film for processing, and also order prints online, or from the App. Come in and print your world.

Sketch Club Members receive a 15% discount at PHOTOLounge.

Use online promo code "sketch".

267-322-6651 – www.myphotolounge.com

Sketch Club members receive 20% discount



Framing Family Treasures for over 20 Years



We offer a variety of framing materials and techniques including:

- Archival / conservation treatment • Specialty mats (Linen, Suede, Silk)
- Stretching / Blocking of needleart and oils
- 1000's of moulding choices • 22 karat finished corner frames • Memorabilia framing
- Custom toning / coloring • Decorative mat cuts • French matting • Fillets
- Mirrors • Shadowboxing • Dry Mounting

www.CanalFrame.com • CanalFrame@comcast.net • 215-493-3660

1093 General Greene Road, Washington Crossing, PA 18977

Gallery hours: Wednesday, Friday, Saturday, Sunday: 1 PM to 5 PM

January 2019

Support the Sketch Club

Like, Link & Share

If you're not following the Philadelphia Sketch Club on Facebook re-tweeting Sketch Club tweets yet, it's time that you did. We have well over 2000 Facebook followers. Get the word out about the Sketch Club. Please click the like button and share your comments and invite your friends to like our page.

Follow @PhilaSketchClub on Twitter, we have almost 400 followers. Please click the heart button and re-tweet our announcements.

Include links on your website, blogs and social media to The Philadelphia Sketch Club to increase traction across social media platforms.

Follow us on Facebook, Twitter and Instagram now!

Thanks to Don Brewer and Michelle Lockamy for managing PSC social media sites.



Member Classifieds

Seeking Framers

Sketch Club members frequently ask about framing services. If you wish to provide framing services to PSC members, please contact the PSC at info@sketchclub.org or call the PSC office: 215 545-92908



Gallery hours: Wednesday, Friday, Saturday, Sunday: 1 PM to 5 PM

January 2019

The Portfolio: The newsletter of the Philadelphia Sketch Club is published monthly. Editor: Ken Weiner; Technical support and Web Master: Ken Weiner. Send your member news, announcements and corrections to portfolio@sketchclub.org. The due date for all materials is one week before the end of the month.

Back issues of the Portfolio are available at: <http://sketchclub.org/portfolio-archive/>

Thanks to PSC member volunteer **Ken Weiner** for his ongoing support of Sketch Club technology and communications functions.

The Philadelphia Sketch Club

235 S Camac Street
Philadelphia, PA 19107
(215) 545-9298
<http://sketchclub.org/>
executivedirector@sketchclub.org

Gallery Manager: Michelle Lockamy

Officers:

- President: Richard Harrington
- Vice President: Kenneth Weiner
- Secretary: Fran Carter
- Treasurer: William Patterson

Board of Directors

- Michael Fernandez
- Jacqueline Barnett
- Stephen Iwanczuk
- Kevin Myers
- Charles F. Tarr
- Elise Anzini