

Gallery hours: Wednesday, Friday, Saturday, Sunday: 1 PM to 5 PM

May 2019



Nancy Herman: Very Round Nude with Faces

This Month's Portfolio

Main Gallery Schedule	2
Stewart Gallery Schedule	6
Sketch Club Activities	8
Art Natters: Members News	11
Sketch Club Open Workshop Schedule	18
Opportunities/Notices	19
Membership	23
Volunteer	24
Support the Sketch Club	25
Member Classifieds	27

Send your member news, announcements and corrections to portfolio@sketchclub.org. The deadline for ALL submissions is 1-week before the end of the month.

Reminder: It's never too late. You can always renew your membership

You may pay online at <http://sketchclub.org/annual-dues-payment/>

or mail your check to:

The Philadelphia Sketch Club

235 S. Camac St.

Philadelphia, PA 19107

For questions please contact the Gallery Manager at 213335-545-9298 or email:

executivedirector@sketchclub.org

Late Breaking News – See items that were submitted after the publication date. Go to:

info@sketchclub.org

The PSC general email is: info@sketchclub

Gallery hours: Wednesday, Friday, Saturday, Sunday: 1 PM to 5 PM

May 2019

Main Gallery Schedule

[See the 2019 Exhibition Schedule](#)

[Important Dates for all PSC Activites](#)

The Workshop Show

May 6 – 29, 2019

Reception: Sunday May 26, 2019; 2:00 – 4:00PM



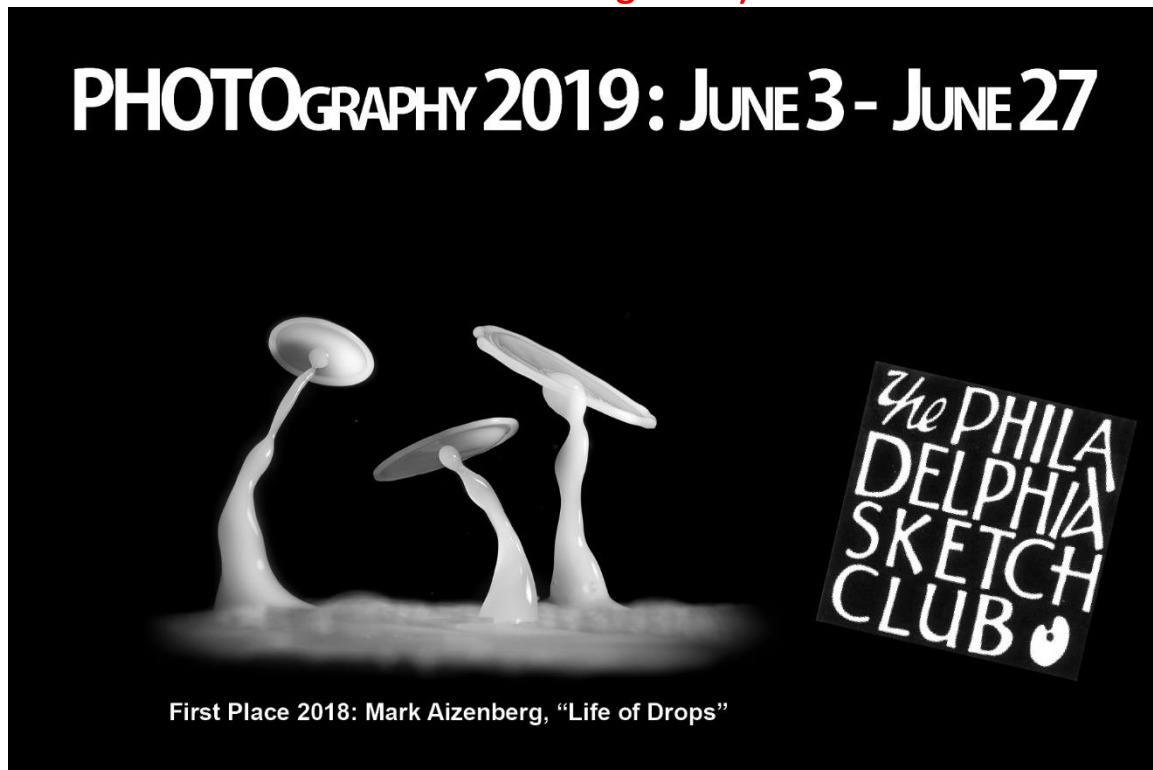
Gallery hours: Wednesday, Friday, Saturday, Sunday: 1 PM to 5 PM

May 2019

Coming Next in the Main Gallery

There's Still time to Submit your work!

Deadline: Midnight May 5th



- **Reception:** Sunday June 23rd, 2019, 2:00 – 4:00 PM at the Philadelphia Sketch Club;
Deadline for on-line submissions: Sun May 5th at Midnight;
Juror: Ron Tarver

Get the Prospectus: [Photography 2019 Prospectus](#)

Entry is by on-line submission at: [Submit On-line](#)

Works Eligible: Any photographic process, traditional or digital, black & white or color. All submitted work must be offered for sale during the exhibition. No transparencies will be accepted. Maximum framed size 40" in any dimension. All work must be labeled on back and framed appropriately, wired with eye-hooks and ready for hanging. No clip frames. Improperly framed pieces will be rejected.

Entry Fee:

- PSC Members: \$5 entry for first piece, \$10 additional works
- Non-Members: \$20 for first piece, \$10 for additional works

Online Entry Assistance: Sat May 4th, 1-5 PM at PSC

- **Submissions:** You can submit up to 10 works. Maximum of 2 works accepted;
- **Notification of acceptance:** Emails sent or check www.sketchclub.org on May 8th, 2019 after 1 PM;
- **Delivery of Accepted Works:** Friday May 31st & Saturday June 1st, 1-5 PM;
- If shipping artwork, view; [Shipping Terms](#)
- **Pickup:** Fri, June 28th and Sat, June 29th, 1-5 PM.

Main Gallery Schedule

Small Oil Paintings Exhibition News

Report by PSC member, **Bill Kosman**: Philadelphia Painter and Sketch Club member **Matt DeProspero** Wins 1st Prize in the Philadelphia Sketch Club's historic Small Oil Paintings Exhibition, just after deciding to devote his career to painting.

DeProspero, of Philadelphia, received the award for his painting "Got Milk" along with the R. Tait McKenzie Medal during a ceremony at the club's historic 235 South Camac St. Center, in Philadelphia, just months after deciding to devote his career exclusively to painting.

DeProspero earned a degree in Design & Illustration from the Hussian School of Art (Philadelphia) and at the urging of his painting teacher, Al Gury, decided to continue studying at the Pennsylvania Academy of Fine Arts (Philadelphia) for two more years. Since then he has worked in graphic design and marketing for 22 years and ran his own handyman business for the past five years.



Got Milk

"Painting has always been my passion and escape," DeProspero said, in explaining his decision in January to focus his career exclusively on painting. "This award is an inspiration to pursue painting full time. It's a validation that I'm on the right track."

Since 1863, the Small Oils competition has drawn the participation of some of America's most renowned painters, such as Thomas Eakins, Thomas Pollock Anshutz and N C. Wyeth. In its early days, artists hoped that showing small examples of their work would prompt patrons to order larger paintings. Over the years, Small Oils has remained one of the most anticipated and important art competitions. This year it drew 265 submissions, of which 176 were selected for display at the club's gallery.

"The annual exhibition of Small Oils at the Philadelphia Sketch Club is an important piece of art history in Philadelphia," said Richard A. Harrington, president of the club. "In 2019, this exhibition is as highly anticipated by the Philadelphia region's painters as it was in 1919 and the 50 years before that. It is a wonderful opportunity to include Philadelphia's contemporary artists in the same company as greats such as Thomas Eakins and Thomas Anshutz." R. Tait McKenzie was a physician who gained fame for developing modern theories of physical therapy. He was also an artist who created Olympic medals. And for the 1921 Small Oils exhibition, McKenzie created a special three-inch bronze medal.

Main Gallery Schedule

Small Oil Paintings Exhibition News: Continued

Other winners are:

- Second Place: Nicole Maye Luga, MFA, "Last Light"
- Third Place: Bob Voynow, "The Flats"
- Best Abstract: Jim Stewart, "English Landscape II"
- Best Still Life: Nancy Granda, "Pitcher with Orange"
- Best Portrait: Arthur Haywood, "Ancient Wonder"
- Best Landscape: Megan Lawlor, "Abandoned Shed, Kuerner Farm"
- Honorable Mention: Tom Kohlmann, "James"
- Honorable Mention: Robert Bohne, "Painting at Tiborinos"
- Honorable Mention: Kay King, "Magic Morning"
- Honorable Mention: Raymond Brown, "Harold"



Matt (left) and PSC President Richard Harrington

Philadelphia painter and PSC member **Patrick Connors** served as juror of the exhibit, selecting the paintings to be included in the exhibit and choosing the winners. A graduate of the Pennsylvania Academy of the Fine Arts and the University of Pennsylvania, his work is exhibited

internationally and is included in private and public collections. Fellowships and grants include a Franz & Virginia Bader Fund Grant, an Oxford University Summer Residency Fellowship in painting and anatomy, a Pollock Krasner Foundation Grant for painting, the Samuel D. Gross/Thomas Eakins Award for Significant Contributions to Medicine and its Surrounding Culture by the College of Physicians of Philadelphia; and the select alternate for a Senior Research Fulbright Scholarship for Italy. Among the institutions where he has lectured are Yale University Art Gallery, Philadelphia Museum of Art and Drexel School of Medicine. He has taught at the New York Academy of Art, the Pennsylvania Academy of the Fine Arts, and the Institute of Classical Architecture & Art: Manhattan and Rome Programs. In 2018, Patrick was honored with the Philadelphia Sketch Club Medal.

Gallery hours: Wednesday, Friday, Saturday, Sunday: 1 PM to 5 PM

May 2019

Stewart Gallery Schedule

Ben Cohen Solo Show



May 6 – 29

Reception: Sunday May 26, 2019;
2:00 – 4:00PM

Coming in June

Stewart Gallery will be showing the work of Photographer **Rich Dunoff**. June 3-23, 2019. The show Next Step exhibits a series of photographs of Dance and Movement.

There will be a reception for the show on Sunday June 9th. 1- 4pm

Please come, Rich would be thrilled to see you.

Rich is

Richard Dunoff

richdunoff@verizon.net

Gallery hours: Wednesday, Friday, Saturday, Sunday: 1 PM to 5 PM

May 2019

Stewart Gallery Schedule



**Exhibition space in
the Stewart Gallery
is available for PSC
Members!**

Reserve the gallery by
contacting our
Exhibition Coordinator:
exhibitions@sketchclub.org

The space is \$150 for a
month. Members can
show once in the Stewart
Gallery per year.

[See the 2019 Exhibition Schedule](#)

[Important Dates for all PSC Activities](#)

Sketch Club Activities

Dinner Meeting: May 10, 2019

NOTICE of ANNUAL MEMBERS MEETING

The Annual Sketch Club Meeting and Dinner will be held on Friday May 10th, 2019

Dinner details and Election information will be sent in a follow-up email.

Sketch Club Election of Board of Directors

- All Sketch Club members in good standing are eligible to vote.



Any PSC member in good standing who has been a member for more than one year is eligible to run for an Executive or Board position. Executive Officers serve one-year terms, and Board members serve for two years. The Board meetings are scheduled for 6:30 PM on the third Tuesday of each month at the Club.

If you would like to nominate yourself or another member for an elected position, you can contact Chuck Tarr, this year's Elections Chair, through the PSC office by April 25th.

The list of candidates will be presented in the May issue of the Portfolio, and the election will take place at the May 10, 2019 Members Dinner Meeting.

Gallery hours: Wednesday, Friday, Saturday, Sunday: 1 PM to 5 PM

May 2019

Sketch Club Activities

New TV/Video Monitor for Member Viewing

The PSC now has a new large-screen TV. Thanks to the generosity of member volunteers **Tom Kohlmann** and **Jacqueline Barnett**, the Sketch Club now has a 49" LG Smart TV. **Chuck Tarr** has offered to purchase an appropriate stand. The final location for the unit is under review. Members can now use the for a host of activities, including Instructional YouTube videos, and presentations.



New On-line Members Directory Page on PSC Web Site



From Sketch Club member and web-master **Ken Weiner**: We receive frequent requests for an on-line members directory. In response, this month, we added a new page to the Member's Only section of our web-site. It shows contact for all current members. Go to the page and make sure your contact info is correct.

You'll need the passwords to access Members Only page. If you've forgotten them, please contact us at membership@sketchclub.org or call the office for assistance.

To reach the page go to sketchclub.org and go to Membership on the top menu and select Members Only. You'll find a link: Contact other PSC members. Go to our on-line directory: Membership Directory. Click on the link to see the directory.

Gallery hours: Wednesday, Friday, Saturday, Sunday: 1 PM to 5 PM

May 2019

Sketch Club Activities

Critique Night – May 15th, 2019 from 7:00 – 9:00 PM

Open to PSC Members and Non-Members

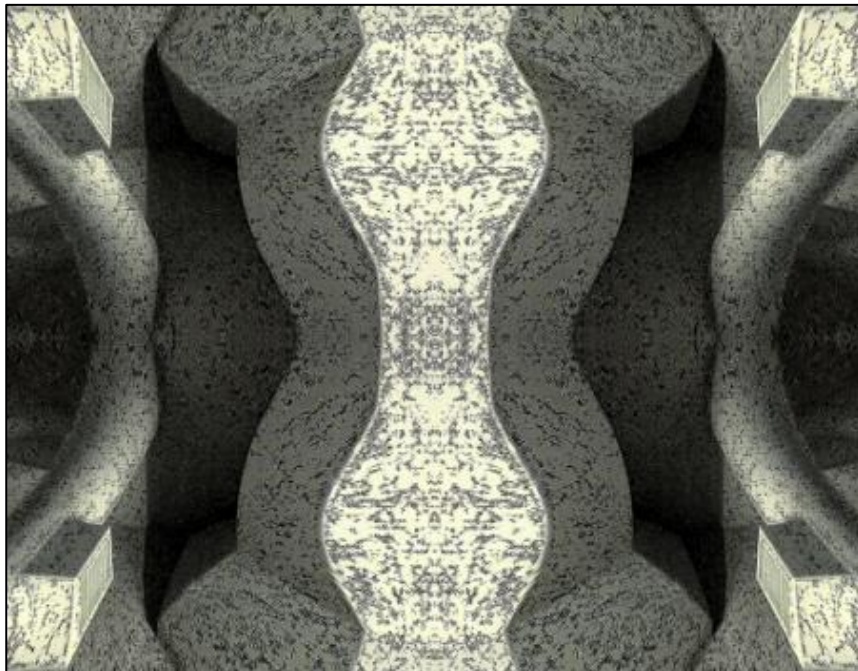
RSVP to Michelle Lockamy at 215-545-9298 or
executivedirector@sketchclub.org

Critique Night is held in the Library of the Sketch Club every third Wednesday beginning at 7 PM. Bring work you've finished, work in progress, or just sketches for work you're planning! Photos, digital work, drawings, all mediums are welcome; we can project digital images on a screen for review, so you have the option to show work that may be too big or too heavy to transport to the Club. There is no one individual directing the critique, just your fellow artists and peers. Facilitated/monitored by Rich Harrington, PSC President



Thanks to PSC member volunteer **Rich Harrington** for organizing and monitoring this event

Photo Circle– May 9th, 2019 from 6:30 to 8:30 PM



We will discuss new group activities and possibilities for expansion. The Photo Circle meets every 2nd Thursday at 6:30 PM. You can contact Steve anytime at si22@drexel.edu or 215-300-9192 (cell). **Steve Iwanczuk**, Photo Circle Monitor and Member of Philadelphia Sketch Club Board of Directors.

Thanks to PSC member volunteer **Steve Iwanczuk** for organizing and monitoring this event.

Gallery hours: Wednesday, Friday, Saturday, Sunday: 1 PM to 5 PM


May 2019

Art Natters: Members News

Sketch Club member **Joellyn Ross** received the Robert and Irving Portner Memorial Award for her painting, "Painting Myself Into a Corner," at the Cheltenham Center for the Arts 76th Annual Juried Painting Show.

From Sketch Club member, **Ellen Cooper**.

*Painting the Portrait -
Intensive workshops with acclaimed portrait artist
Ellen Cooper*



Learn ...

- Composition*
- Form and light*
- Capturing a likeness*
- Color and value*

Ellen Cooper is a Signature Status, PSOA artist whose canvases have won numerous international awards and whose portraits hang in private and public collections around the country.

July 07-13, 2019 at Heron Crest Studios, Aston PA. For more details and to register please go to: www.ellencooper.net

Sketch Club member **Joellyn Ross** received the Robert and Irving Portner Memorial Award for her painting, "Painting Myself Into a Corner," at the Cheltenham Center for the Arts 76th Annual Juried Painting Show.

Gallery hours: Wednesday, Friday, Saturday, Sunday: 1 PM to 5 PM

May 2019

Art Natters: Members News

PSC members **Gail Ferretti, Colleen Hammond, Deborah Anne S. Horsting, and Lois Schlachter** have been selected to participate in the upcoming FAME (Fellowship Annual Membership Exhibition). This 2019 Fellowship of the Pennsylvania Academy of the Fine Arts show will be:

- At HOT-BED GALLERY 723 Chestnut Street, Second Floor (above Morimoto Restaurant), Philadelphia. HOT-BED is a new creative venture between James Oliver Gallery and Bryan Hoffman of Philadelphia based Hoffman Design Group.
- EXHIBITION DATES: Sunday, May 5 to Wednesday, May 29, 2019.
- OPENING RECEPTION: Sunday, May 4 from 2 to 5 PM
- CLOSING EVENT: Wednesday, May 29, 2019
- 2019 FAME JUROR for both exhibition and award selections is: JAMES OLIVER, Artist & Owner of James Oliver Gallery (JOG)

A brief story and video from Sketch Club member, **Nancy Herman**: One Tuesday I arrived at the sketch club to find that the model was a no show. After some consternation in the room one of the artists said, "I will model no problem". He proceeded to strip and take the podium. This is the result of my experience that day.

See the video on youtube: <https://youtu.be/HeoppHdAdyQ>

Sketch Club member, **Brenda L Bechtel** has her wood block print "Innocent Days" included in South County Art Association Open Paint Print & Draw Juried Exhibition in Rhode Island. In



VanVleck's Wisteria Courtyard - Counter Clockwise

Connecticut, Lyme Art Association has included "Papyrus with Elephant Ears ~ Chanticleer" in an "Act in four parts - Out of town" Exhibition. James H Rubin has juried "Van Vleck's Wisteria Courtyard ~ Counter Clockwise" into Mills Pond Gallery Exhibition "Time" on view in the Historic Mills Pond House in Smithtown, on Long Island. In Scituate, Front Street Art Gallery Annual Juried Exhibition includes "Blue Skies Smiling at Me". The National Art League in NY includes "Fog Descends in an Amber Fugue" transparent watercolor in the 89th Annual Exhibition. New Haven Paint & Clay Club, 118th National Exhibition includes "Papyrus with Elephant Ears". Academic Artists Association 69th National juried exhibition includes "Blue Skies Smiling at Me"

To learn more, please visit BrendaLBechtel.com

Gallery hours: Wednesday, Friday, Saturday, Sunday: 1 PM to 5 PM

May 2019

Art Natters: Members News

Sketch Club member **Diane Hark** and her husband Jerry are each celebrating 80th birthday by packing them in art classes, dental graduation of students AND CARRYING TORAH IN SYNAGOGUE !!

It has been a memorable year. Thank you for being part of our lives Diane



Gallery hours: Wednesday, Friday, Saturday, Sunday: 1 PM to 5 PM

May 2019

Art Natters: Members News

Sketch Club member **Robert Bohne** will be the featured artist at the Church St. Gallery in West Chester Pa. for the month of May. He will be showing both oils and works on paper completed in the past two years. The opening will be on Friday May 3rd, 6 to 9 pm. Church St. Gallery, 12 S Church St, West Chester, PA 19382.



River Willow, 9 x 12, oil on linen

Portfolio Banner Artist

Video from Sketch Club member
Nancy Herman

One Tuesday I arrived at the sketch club to find that the model was a no show. After some consternation in the room one of the artists said, "I will model no problem". He proceeded to strip and take the podium. This is the result of my experience that day.



Very Round Nude with Faces

See the video:

<https://youtu.be/HeoppHdAdyQ>

Thank you to Nancy for submitting her offering for this month's banner. We encourage all members to consider submitting work for the banner. For criteria go to: <http://sketchclub.org/portfolio-submissions/>

Art Natters: Members News

Some recent work by Sketc Club member **Fred Andrus**.



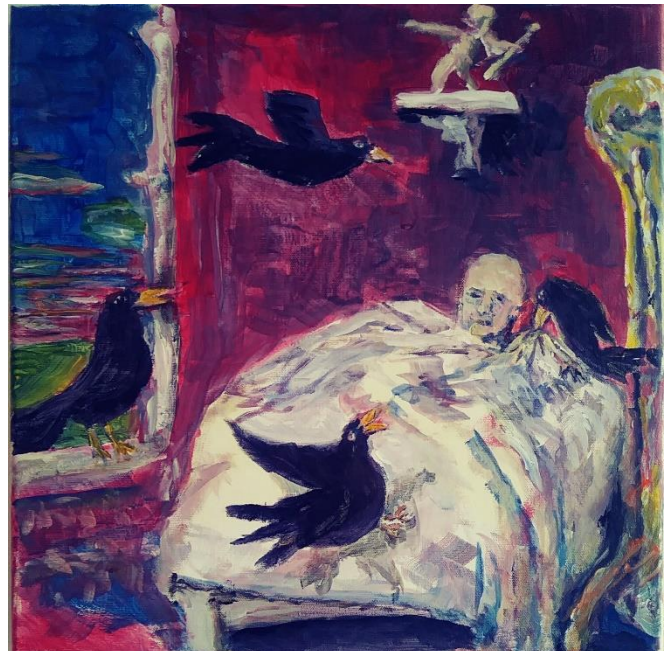
Box Kite



Day at Hawk Mountain



Heist



Awakened by Crows

Gallery hours: Wednesday, Friday, Saturday, Sunday: 1 PM to 5 PM

May 2019

Art Natters: Members News

PSC Member **Rob Finn** will be teaching a plain-air watercolor class August 4-10, 2019 at College of the Atlantic in Bar Harbor, Maine. Room and board are provided for a fraction of the market rate for lodging in this fabulous Summer vacation spot!

During the week the class will explore COA's beautiful seaside campus and nearby scenic areas in Bar Harbor and Mount Desert Island. Paper, paint, and brushes will be provided.



Plein-Air Watercolor Painting



For more information: [Plein-Air Watercolor Painting](#)

Sketch Club member **Sheldon Strober's** studio/gallery, Riverbay Studios, will be among the 22 destinations and over forty Salem county artists who will be open for Salem county's Arts in Bloom on Saturday and Sunday, May 18 and 19, 10am to 5 pm. Strober will be exhibiting his current photos and paintings. Visitors are welcome to photograph garden and beach close-ups as demonstrated in many of the exhibited photos by the host artist.

Gallery hours: Wednesday, Friday, Saturday, Sunday: 1 PM to 5 PM

May 2019

Art Natters: Members News

Sketch Club member **Alice Chung** is exhibiting her work at Salus University as MCGOPA Spring Show currently until May 25, 2019.

Also she is exhibiting her work at Einstein Hospital Braemer Art building Gallery until July 9, 2019



Sketch Club member **Annie Stone** is looking for collage artists in the Philadelphia area to A) Who might be interested in being part of a "Collage Club" here in Philly and B) Help create/participate in this event. See link below.

<https://www.facebook.com/kolajthemagazine/>

Sketch Club member **Sam Olshin, AIA**

Atkin Olshin Schade Architects

www.aosarchitects.com

215-925-7812



June Open House and Drawing from Nature

June 1, 2019

1pm - 4pm, House tour at 2:30pm

Bring your sketchbook and your favorite sketching tools and join us for a relaxing day of drawing inspired by the beautiful scenes at the Rittenhouse Park.

Some sketching materials and light refreshments provided.

Preregistration \$35, College Students \$15, ID \$10, Students \$12 and under \$10. \$20 at the door.

Gallery hours: Wednesday, Friday, Saturday, Sunday: 1 PM to 5 PM

May 2019

Art Natters: Members News

Sketch Club Open Workshop Schedule

All workshops are open to the public. There is no need to register before attending. You do NOT have to be a member of the Philadelphia Sketch Club to participate in the workshops. Our workshops are open to anyone who is interested in drawing, painting or printmaking. All skill levels are welcome. Fees: Model workshops: \$8/session members, \$9/session for non-PSC members; Printmaking workshop: \$10/session; All workshops \$6 for full-time students. Monitored by PSC members.

Life Model	Costumed Model	Printmaking
<p>Mondays – Extended pose (multi-session): 6:30 PM-9:30PM</p> <p>Monitors: Robert Bohne, Vince Docktor, Dan Kuetemeyer</p> <p>Tuesdays – Extended pose: 12:00 PM to 3:00 PM Monitor: Jacqueline Barnett</p> <p>Wednesdays – Extended pose: 6:30 to 9:30 PM Monitor: Vince Docktor</p> <p>Saturdays – Extended pose: 9:30 AM to 12:30 PM Monitor: Vince Docktor</p>	<p>Thursdays</p> <p>Extended pose 12:00 PM to 3:00 PM Monitor: Bob Bohne.</p>	<p>Tuesdays</p> <p>10:00 AM to 2:00 PM Monitor: Elizabeth H. MacDonald</p>

Please Note: Those who use oil paints should bring their own container(s) to remove used solvents. Odorless solvents only.

Thank you to all the PSC members who donate their time and expertise to make these workshops available to PSC members and the Philadelphia art community.

Gallery hours: Wednesday, Friday, Saturday, Sunday: 1 PM to 5 PM

May 2019

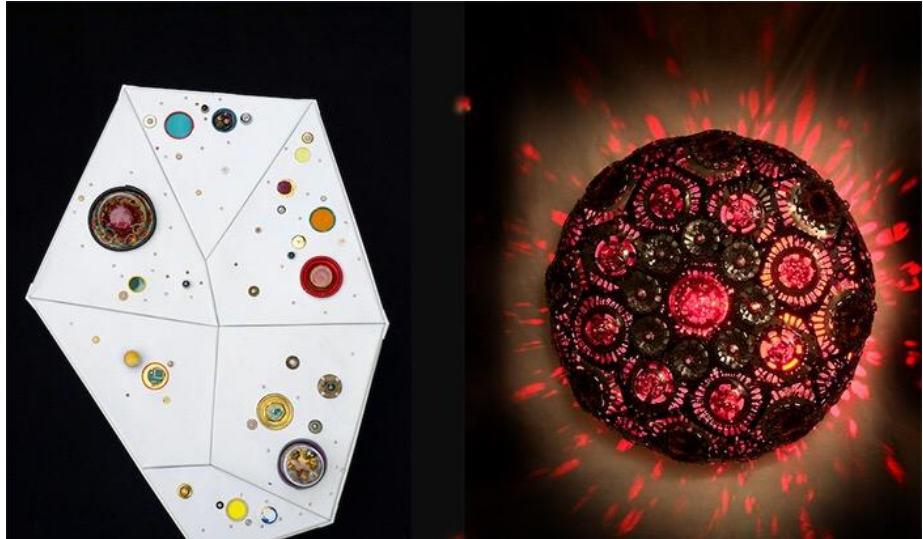
Opportunities/Notices

Chanthaphone Rajavong: FUTURE/SUSTAINABLE

Opening & Artist's Reception:
Friday, May 10th, 6:00 PM –
8:00 PM

The University City Arts League
4226 Spruce Street
Philadelphia, PA 19104

FUTURE/SUSTAINABLE is a solo show by Chanthaphone Rajavong, a Philadelphia based artist using ancient weaving techniques from Laos, his native country, to create sculptures out of salvaged components from electronics. After spending seven years of his childhood in a refugee camp in Thailand, Rajavong moved to the United States, where art making helped him adjust to his new environment.



Link Harper

In a way that mirrors his lived experience, he gives discarded materials a new life, an opportunity to reenter a world that once abandoned them. To this effect, current global events echo throughout his work, which is concerned with the Anthropocene, the fragility of the planet, and humanity. As he puts it, FUTURE/SUSTAINABLE “is an urgent plea for the healing of our planet.”

Rajavong attended the Pennsylvania Academy of the Fine Arts and has exhibited internationally.

www.ucartsleague.org

Gallery hours: Wednesday, Friday, Saturday, Sunday: 1 PM to 5 PM

May 2019

Opportunities/Notices



Join us for a week of plein air painting in verdant and historic Bucks County! Paint the quaint towns, rolling landscapes, lakes and rivers, covered bridges, stone farmhouses, and historic estates that have inspired artists for more than a century. Jointly hosted by Bucks County Community College,

the Central Bucks Chamber of Commerce and Sketch Club member **Alan Fetterman** Fine Arts, proceeds support art scholarships and arts programming in Bucks County.

- Application Dates: March 1 – May 24, 2019;
- Application Fee: \$50.00
- Late Application Deadline: May 31, 2019
- Late Application Fee: \$70.00
- Notification Date: June 21, 2019
- \$15,000 in Awards - Including Best in Show award of \$5,000 and Alan Fetterman Fine Arts Medal

Eligibility

The Bucks County Plein Air competition is open to all painters age 18 and older. All entrants will be juried, and the total number of participants will be limited to 30. At least six participating artists will be residents of Bucks County, PA.

Submission Requirements, Visit

http://www.juriedartservices.com/index.php?content=event_info&event_id=1552 for complete details and application.

For more information: <http://BucksCountyPleinAir.org> | bcpleinair@bucks.edu | 215-968-8224

Gallery hours: Wednesday, Friday, Saturday, Sunday: 1 PM to 5 PM

May 2019

Opportunities/Notices

Call for Entries PHOTO EX

Submission Deadline: **August 24, 2019**

Media Arts Council's 13th Annual
Juried Photography Exhibit
2019 Theme



For more information,
links to exhibit rules and entry form:
MediaArtsCouncil.org/PhotoEx

Call for Entries: 13th Annual Juried Photography Exhibit 2019

All photographers are invited to enter Media Arts Council's 13th Annual Juried Photography Exhibit, PhotoEx.

The theme for 2019 is: "Change/Transformation." Photos may depict any subject matter in any location, provided they reflect the theme. Deadline for entries is 7:00 PM, Saturday August 24, 2019, regardless of postmark.

Change/Transformation: What does it mean to you? Something altered or modified. A metamorphosis, transfiguration, evolution, or reshaping. This theme invites you to use the concept of "Change/Transformation" in your photographic submissions, incorporating your unique creative interpretations for the PhotoEx 2019 Juried Exhibition. Feel free to share this event using the attached graphic.

For more information, including links to download pdf's of exhibit rules and entry form, go to: <http://MediaArtsCouncil.org/PhotoEx>. And be sure to like our Facebook page at: <https://www.facebook.com/PhotoExMediaArtsCouncil/>

Opportunities/Notices

Explore Fiber

***Features Deborah Kruger Art & Process Documentary
in their library of fiber artist videos***



Deborah Kruger Art & Process is a compelling peek into the mind and studio of contemporary artist, Deborah Kruger. Viewers will learn about her multi-media approach to making art that combines an abstract and layered aesthetic with concerns about habitat destruction and declining bird species.

Deborah's documentary has just been added to

Explore Fiber's video library:

<https://deborahkruger.com/featured/>

Website: www.deborahkruger.com

Like on Facebook: [deborahkrugerartist](https://www.facebook.com/deborahkrugerartist)

Twitter: [@360XochiQuetzal](https://twitter.com/360XochiQuetzal)

Instagram: [@deborahkrugerstudio](https://www.instagram.com/deborahkrugerstudio)

As a courtesy to our non-PSC-member friends, in support of the Philadelphia artist community, we publish your notices, etc., free of charge. However, contributions to the PSC are always welcome and we will gladly consider your application for membership

[Contribute to the Sketch Club Here](#) [Apply for PSC Membership Here](#)

Membership

Recent New PSC Members

The Sketch Club welcomes new members recently approved by the Board of Directors.

- Marguerite Heilman

Current Sketch Club members can review new member applications at: <http://sketchclub.org/member-applications/>. The members only section and documents are password protected. If you've forgotten the password, please contact Ken Weiner at: membership@sketchclub.org.

Not a PSC Member?: Join Now!

If you're reading this edition of the Portfolio and you're not a member of the PSC, you should consider joining the more than 200 other Philadelphia area artists who have. The PSC is one of the most active visual art venues serving center city Philadelphia. The PSC is a hands-on organization that offers its members the opportunity to participate in all aspects of creating and presenting work to the public. It presents over 20 scheduled group and solo exhibitions annually and offers a wide range of daily workshops. [Get info and an application here.](#)

If you are a member of the PSC, please feel free to share the Portfolio with your artist friends and encourage them to become members.

Membership Renewal

You can check the status of your membership by going to the Current Members page on the PSC web-site: <http://sketchclub.org/sample-page/memberspace/>. All current members are listed. An asterisk (*) means that the membership has expired but is within the 60-day grace period for renewal. Names in red are active links to the individual's web site.

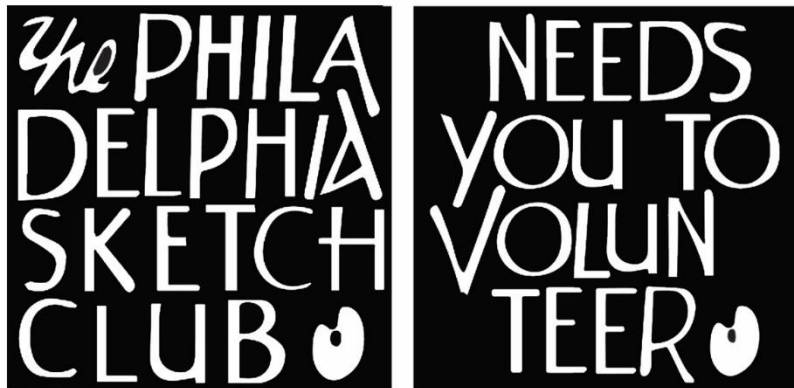
Renew Now! <http://sketchclub.org/annual-dues-payment/>

If you have any questions about your membership, please don't hesitate to contact us at membership@sketchclub.org or call the office: 215-545-9298.

Volunteer

We **!!STILL!!** Need You!

The Philadelphia Sketch Club is managed entirely by volunteers except for the gallery manager, housekeeping, and bookkeeper.



The PSC always needs volunteer members. Volunteering is one of the most important aspects of being a Sketch Club member and it is the one of the best ways to take advantage of the PSC. You'll be working with colleagues who share the same interests and helping the PSC provide unique services to the visual arts community. Sign up for an activity today.

Here are some of the activities that volunteers perform:

- Chair exhibitions
- Assist in hanging exhibitions
- Covering exhibition drop-offs and pick-ups
- Monitor workshops
- Assist with presentations
- Serve on the Board of Directors
- Serve as Key Circle volunteers
- Publish the Portfolio
- Manage the PSC web site
- Gallery coverage
- Graphics for Portfolio, PSC web site, social media
- Assist in every aspect of managing the club and providing member services

To get involved, contact:

Jackie Barnett

Volunteer Coordinator

Philadelphia Sketch Club

jbarnett12@verizon.net

Gallery hours: Wednesday, Friday, Saturday, Sunday: 1 PM to 5 PM

May 2019

Support the Sketch Club

Contribute

Please consider making your tax-deductible contribution now. These funds will be put to good use providing enhanced services to our members and friends.

Membership dues cover only a small portion of the PSC's operating expenses. Competition for funding for arts organizations like the Sketch Club is increasingly competitive and total funding for the arts is shrinking. Your additional support will keep the PSC an active support for visual artists in the Metropolitan Philadelphia area. The Philadelphia Sketch Club is an IRS designated 501(c) (3) non-profit organization.

You can call the office at 215-545-9298, mail checks to the Sketch Club or visit the Contribute page of our Website.

Visit our **Contribute** page of our website to give online at:

<http://sketchclub.org/support-us/>

You can also support the PSC on an ongoing basis when you shop on Amazon. Go to:

<http://smile.amazon.com/> and enter the Philadelphia Sketch Club in the Pick your own charitable organization box.

Your support makes it possible for the PSC to continue providing ongoing daily workshops and numerous annual gallery exhibitions.



Sketch Club Members receive a
25% discount at Merion Art.
Use promo code "PSC"
online at www.merionart.com

"Our staff of experienced artists, custom framers, and designers can answer your art materials questions and help to creatively solve all your artistic problems. Stop in our store for personalized friendly attention, or go to merionart.com for access to thousands of quality art products!"

Monday - Friday: 8:30am - 6:00pm
Saturday: 9:00am - 5:30pm
Sunday: 12:00pm - 5:00pm

Merion Art & Repro Center
17 West Lancaster Avenue
Ardmore, PA 19003

(610) 896-6161 - Phone
(610) 896-7781 - Fax

Gallery hours: Wednesday, Friday, Saturday, Sunday: 1 PM to 5 PM

May 2019

Support the Sketch Club

PHOTOLounge

The PHOTOLounge supports the Philadelphia Sketch Club and its members:

Sketch Club Members receive a 15% discount at PHOTOLounge.

Use online promo code "sketch".

The PHOTOLounge is located at 1909 Chestnut St. Philadelphia PA 19103.

For nearly 20 years, PHOTOLounge's focus has been the simple idea that pictures should be beautiful, affordable, and long lasting. We're a very adept photo lab with diverse services from iPhone printing to shoebox scanning. You can bring us film for processing, and also order prints online, or from the App. Come in and print your world.

Sketch Club Members receive a 15% discount at PHOTOLounge.

Use online promo code "sketch".

267-322-6651 – www.myphotolounge.com

Sketch Club members receive 20% discount



Framing Family Treasures for over 20 Years



We offer a variety of framing materials and techniques including:

- Archival / conservation treatment • Specialty mats (Linen, Suede, Silk)
- Stretching / Blocking of needleart and oils
- 1000's of moulding choices • 22 karat finished corner frames • Memorabilia framing
- Custom toning / coloring • Decorative mat cuts • French matting • Fillets
- Mirrors • Shadowboxing • Dry Mounting

www.CanalFrame.com • CanalFrame@comcast.net • 215-493-3660

1093 General Greene Road, Washington Crossing, PA 18977

Gallery hours: Wednesday, Friday, Saturday, Sunday: 1 PM to 5 PM

May 2019

Support the Sketch Club

Like, Link & Share

If you're not following the Philadelphia Sketch Club on Facebook re-tweeting Sketch Club tweets yet, it's time that you did. We have well over 2000 Facebook followers. Get the word out about the Sketch Club. Please click the like button and share your comments and invite your friends to like our page.

Follow @PhilaSketchClub on Twitter, we have almost 400 followers. Please click the heart button and re-tweet our announcements.

Include links on your website, blogs and social media to The Philadelphia Sketch Club to increase traction across social media platforms.

Follow us on Facebook, Twitter and Instagram now!

Thanks to Don Brewer and Michelle Lockamy for managing PSC social media sites.



Member Classifieds

Seeking Framers

Sketch Club members frequently ask about framing services. If you wish to provide framing services to PSC members, please contact the PSC at info@sketchclub.org or call the PSC office: 215 545-92908



Gallery hours: Wednesday, Friday, Saturday, Sunday: 1 PM to 5 PM

May 2019

The Portfolio: The newsletter of the Philadelphia Sketch Club is published monthly. Editor: Ken Weiner; Technical support and Web Master: Ken Weiner. Send your member news, announcements and corrections to portfolio@sketchclub.org. The due date for all materials is one week before the end of the month.

Back issues of the Portfolio are available at: <http://sketchclub.org/portfolio-archive/>

Thanks to PSC member volunteer **Ken Weiner** for his ongoing support of Sketch Club technology and communications functions.

The Philadelphia Sketch Club

235 S Camac Street
Philadelphia, PA 19107
(215) 545-9298
<http://sketchclub.org/>
executivedirector@sketchclub.org

Gallery Manager: Michelle Lockamy

Officers:

- President: Richard Harrington
- Vice President: Kenneth Weiner
- Secretary: Fran Carter
- Treasurer: William Patterson

Board of Directors

- Michael Fernandez
- Jacqueline Barnett
- Stephen Iwanczuk
- Kevin Myers
- Charles F. Tarr
- Elise Anzini