

Gallery hours: Wednesday, Friday, Saturday, Sunday: 1 PM to 5 PM

July 2019



Rich Harrington

This Month's Portfolio

Main Gallery Schedule	2
Stewart Gallery Schedule	4
Sketch Club Activities	6
Art Natters: Members News	13
Sketch Club Open Workshop Schedule	19
Opportunities/Notices	20
Membership	22
Volunteer	23
Support the Sketch Club	24
Member Classifieds	26

Send your member news, announcements and corrections to portfolio@sketchclub.org. The deadline for ALL submissions is 1-week before the end of the month.

Reminder: It's never too late. You can always renew your membership

You may pay online at <http://sketchclub.org/annual-dues-payment/>

or mail your check to:

The Philadelphia Sketch Club
235 S. Camac St.
Philadelphia, PA 19107

For questions please contact the Gallery Manager at 213335-545-9298 or email:

executivedirector@sketchclub.org

Late Breaking News – See items that were submitted after the publication date. Go to:

info@sketchclub.org

The PSC general email is: info@sketchclub

Gallery hours: Wednesday, Friday, Saturday, Sunday: 1 PM to 5 PM

July 2019

Main Gallery Schedule

[See the 2019 Exhibition Schedule](#)

[Important Dates for all PSC Activities](#)

The 2nd Annual Philadelphia Plein Air Exhibition July 6 – 31

Reception: Sun Jul 28, 2019, 2-4 PM at the Philadelphia Sketch Club.

See 95 works created by 35 artists created in Plein Air within Philadelphia City limits from August 2018 through June 17th 2019 are eligible works.



See the on-line gallery: [2nd Annual Plein Air Gallery](#)

Awards Presented at 3:00 PM

Gallery hours: Wednesday, Friday, Saturday, Sunday: 1 PM to 5 PM

July 2019

Main Gallery Schedule

Coming next in the Upstairs Gallery

Absolutely Abstract Exhibition
August 5th through August 29th, 2019

There's still time to enter.

Submission Deadline Midnight Sunday July 14th

[Get the Prospectus](#)

[Enter On-Line](#)



2018-Abst-Best-in-Show: Cathie-Meighan "Uncharted-Waters" Oil on Canvas

Reception: Sunday August 11th, 2019, 2:00 – 4:00 PM at the Philadelphia Sketch Club
Awards presented: 3:00 PM

Gallery hours: Wednesday, Friday, Saturday, Sunday: 1 PM to 5 PM

July 2019

Stewart Gallery Schedule

Matt DeProspero Solo Show

July 6 – 31



Coming in the Stewart Gallery: New Members Art Exhibition

August 5th through 29th



2018 New Members Show: Anne Kullaf "Peonies and Pepper"

Gallery hours: Wednesday, Friday, Saturday, Sunday: 1 PM to 5 PM

July 2019

Stewart Gallery Schedule



**Exhibition space in
the Stewart Gallery
is available for PSC
Members!**

Reserve the gallery by
contacting our
Exhibition Coordinator:
exhibitions@sketchclub.org

The space is \$150 for a
month. Members can
show once in the Stewart
Gallery per year.

[See the 2019 Exhibition Schedule](#)

[Important Dates for all PSC Activities](#)

Gallery hours: Wednesday, Friday, Saturday, Sunday: 1 PM to 5 PM

July 2019

Sketch Club Activities

No Dinner Meetings in July and August

Next meeting: September 14th, 2019.

Presentation and Menu will be announced in the August Portfolio

Photos from the June Dinner Meeting: Bob Bohne Painting

See Bob's Plein Air Demonstration: [Bob Bohne Presentation](#)



Sketch Club Activities

Presentation Planned for our November 8, 2019 Dinner Meeting

Guest Presenter: Lorraine Glessner – Cold Wax and Encaustic Techniques

Plan to attend this facinating and informative pre-dinner mini-workshop

Biography

Lorraine Glessner's paintings are composed of multiple layers of images, the paintings resolving into subtly flickering worlds of extremely seductive richness. Some of them resemble images seen through a microscope; others hint at the world seen from far above. -Andrea Kirsh, Philadelphia Introductions



24 Robbins Avenue Jenkintown, PA
19046

lorraineglessnerstudio@gmail.com
lorraineglessner.net
267-566-7027

Lorraine Glessner's love of surface, pattern, mark making, image and landscape has led her to combine

disparate materials and processes such as silk, wood, wax, pyrography, rust, paper and more in her work. Lorraine is a former Assistant Professor at Tyler School of Art, Temple University, artist mentor, workshop instructor and an award-winning artist. She holds an MFA from Tyler School of Art, Temple University, a BS from Philadelphia University, and an AAS in Computer Graphics from Moore College of Art & Design. She has a diverse art background with skills that include painting, sculpture, graphic design, interior design, textile design, photography, digital imaging and much more. Among her most recent professional achievements is a Second-Place award in Sculpture from Art of the State at the State Museum in Harrisburg, PA, a recently completed artist residency at Jentel Foundation and an acquisition by Kelsey-Seybold Cancer Center in Houston, Texas. Lorraine's work is included in the recently released Encaustic Art in the 21st Century by Ashley Rooney and Nuance, a curated book by artist, Michelle Stuart. Lorraine frequently lectures and participates on academic panels at various Conferences including The International Encaustic Conference, SECAC and The College Art Association Annual Conference. Her work is exhibited locally and nationally in galleries, museums, craft centers, schools, libraries, universities, and more. Like her work, Lorraine brings to her teaching a strong interdisciplinary approach, mixed with a balance of concept, process, history, experimentation, problem solving and discovery.

See Lorraine's Work: <https://www.loraineglessner.net/>

Sketch Club Activities

Sketch Club Governance

Official Results of the May election for Sketch Club Board Officers and Directors

Officers:

- President: Richard Harrington
- Vice President: Kenneth Weiner
- Secretary: Elise Anzini
- Treasurer: William Patterson

Board of Directors

- Jacqueline Barnett
- Renard Edwards*
- Stephen Iwanczuk
- Edward Pluciennik*
- Charles F. Tarr
- Gail Williams*

*New Member

Consider Becoming a Board Member

Do you want to make a lasting impact on the Sketch Club? If you've been a Sketch Club member for a year or more, consider becoming a board member. To find out more, contact any current board member through the PSC office or via email at: <mailto:membership@sketchclub.org>

Gallery hours: Wednesday, Friday, Saturday, Sunday: 1 PM to 5 PM

July 2019

Sketch Club Activities

No Critique Night in July and August

Next Critique Night – September 11th, 2019 from 7:00 – 9:00 PM

Open to PSC Members and Non-Members

RSVP to Michelle Lockamy at 215-545-9298 or
executivedirector@sketchclub.org

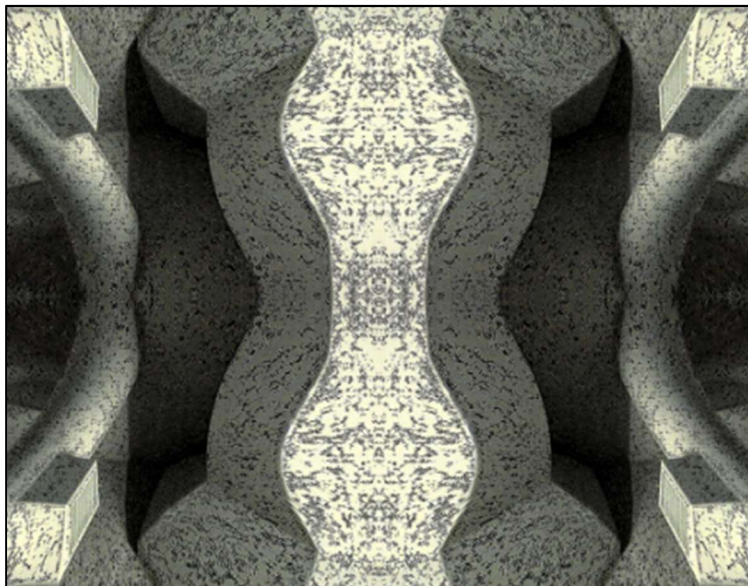
Critique Night is held in the Library of the Sketch Club every third Wednesday beginning at 7 PM. Bring work you've finished, work in progress, or just sketches for work you're planning! Photos, digital work, drawings, all mediums are welcome; we can project digital images on a screen for review, so you have the option to show work that may be too big or too heavy to transport to the Club. There is no one individual directing the critique, just your fellow artists and peers. Facilitated/monitored by Rich Harrington, PSC President



Thanks to PSC member volunteer **Rich Harrington** for organizing and monitoring this event

No Photo Circle in July and August

Photo Circle– September 12th, 2019 from 6:30 to 8:30 PM



We will discuss new group activities and possibilities for expansion. The Photo Circle meets every 2nd Thursday at 6:30 PM. You can contact Steve anytime at stphniwan@gmail.com or 215-300-9192 (cell). **Steve Iwanczuk**, Photo Circle Monitor and Member of Philadelphia Sketch Club Board of Directors.

Thanks to PSC member volunteer **Steve Iwanczuk** for organizing and monitoring this event.

Gallery hours: Wednesday, Friday, Saturday, Sunday: 1 PM to 5 PM

July 2019

Sketch Club Activities

Check-out our Summer Art Sale at the PSC

Contact Michelle at the PSC Office for more information.

215-525-9298

executivedirector@sketchclub.org



Gallery hours: Wednesday, Friday, Saturday, Sunday: 1 PM to 5 PM

July 2019

Sketch Club Activities

The Philadelphia Sketch Club PHOTOgraphy 2019 - Awards



1st Prize: Linda Holinger - *Silhouettes*



2nd Prize: Edward Snyder - *Going for Baroque in South Philly*



3rd Prize: Robert Reinhardt - *Germantown Sunrise*

[See the Exhibition Gallery](#)

Gallery hours: Wednesday, Friday, Saturday, Sunday: 1 PM to 5 PM

July 2019

Sketch Club Activities

The Philadelphia Sketch Club PHOTOgraphy 2019 - Awards



HM: Asia Popinska Sleepy Hollow



HM Carla Vaughan Spread Your Wings



HM: Jim Conner - Ansel's Jeffrey Pine - Yosemite



HM: Gary Grissom - Passing? Government of the People



HM: Laura Storck - The Bell Jar

Gallery hours: Wednesday, Friday, Saturday, Sunday: 1 PM to 5 PM

July 2019

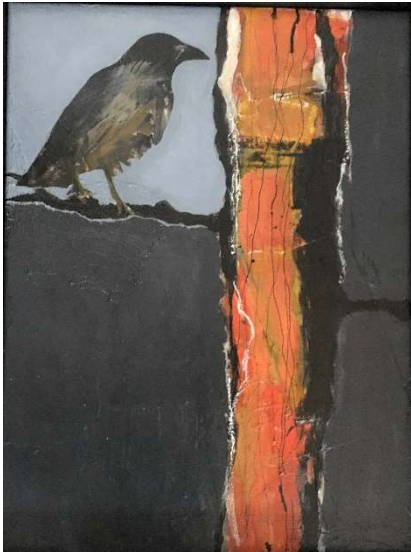
Art Natters: Members News

Sketch Club member **Barbara Dirnbach** is exhibiting two works at the Belmar Arts Center (below Asbury park in NJ), June 5th - July 13th. Gallery Hours: Tuesday, 10:00am - 2:00pm, Thursday - Saturday, 11:00am - 3:00pm. 608 River Road, Belmar, New Jersey 07719, (732) 749-3360

If you're visiting Penn Medicine Radnor check out the beautiful art show organized by the Delaware Valley Art League. I have two paintings on exhibit; "Glorious Day" and "Three Grapefruits and a Pineapple." I hope you enjoy the art. The building is at 250 King of Prussia Rd, Radnor PA 19087. The show ends Sept 14, 2019. The building is accessible during normal business hours and is free to visitors.



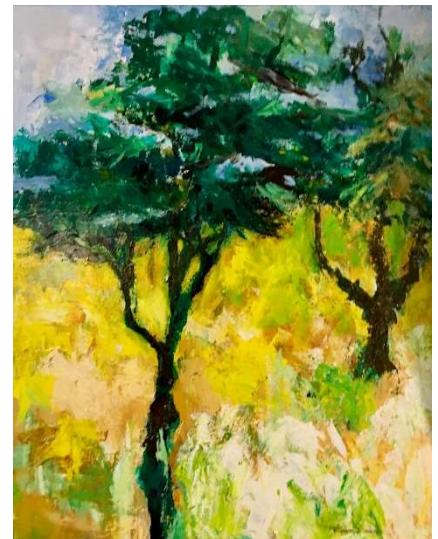
Three Grapefruits and a Pineapple



There's Always Hope



Time's Running Out



Glorious Day

Gallery hours: Wednesday, Friday, Saturday, Sunday: 1 PM to 5 PM

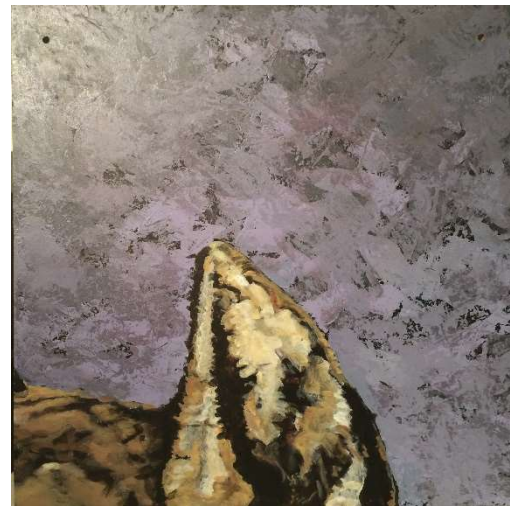
July 2019

Art Natters: Members News



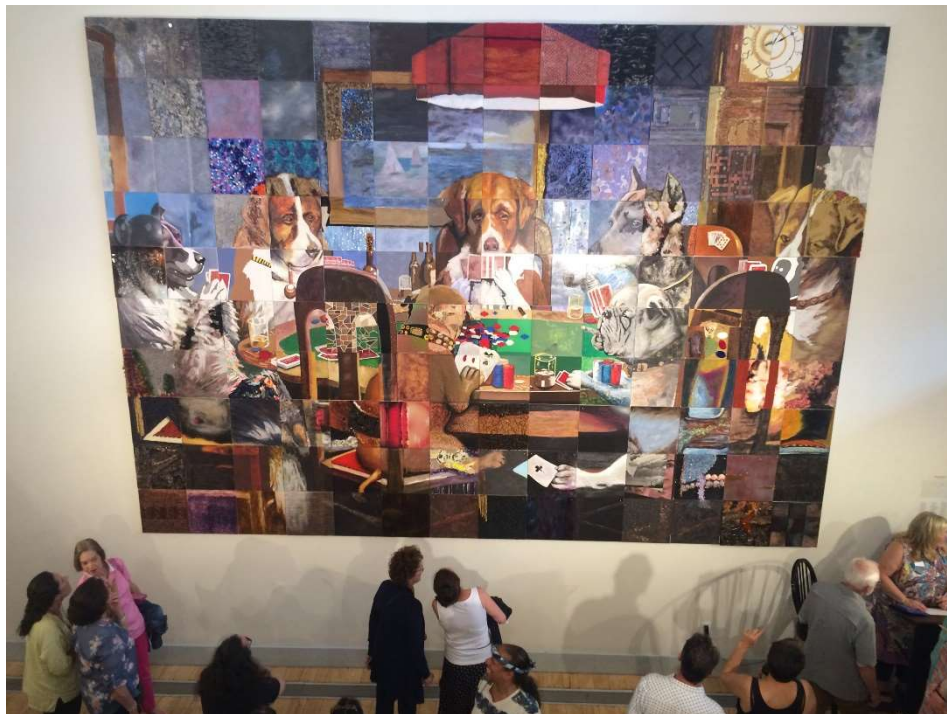
Memories of Infinity

Sketch Club Member, **Brenda L Bechtel** is one of 140 selected Artists whose panel (#39 sold) is included in Piece by Piece IV. This 2019 Biennial, Unique, Large-Scale, Multi-Artist Collaboration, is on View at the Cotuit Center for the Arts through July 29. All panels offered for sale \$100 each (50% benefits the Center) many are three-dimensional! The installation Celebration, June 15th, boasted a packed house - always a fun event as Artists and Patrons watch the "mural" come together, Piece by Piece. Hudson Valley Art Association 86th National Exhibition at Historic Lyme Art Association continues through August 1st



Cotuit Ear

and includes Brenda's Conte & Charcoal creation, "VanVleck's Wisteria Courtyard". Catherine Lorillard Wolfe Art Club, <http://www.CLWAC.org> also includes this piece in the 2019 online Elected Artist Member show through August 31.



Piece by Piece IV

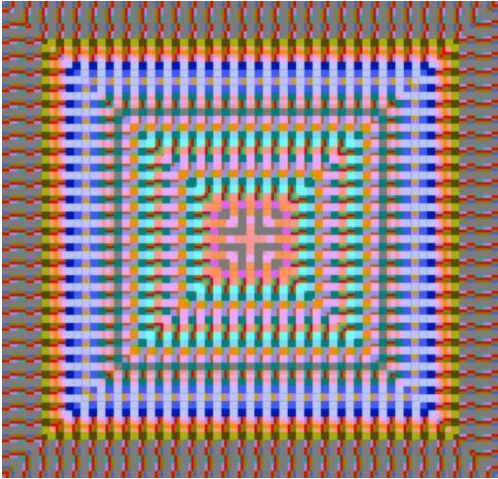
"Memories of Infinity", transparent Watercolour, has caught the eye of Judge of Awards; Ann H Sievers - Director/Curator of the Art Museum, University of St. Joseph, who has generously Awarded Second Place for the piece in the 90th National Exhibition of Connecticut Women Artists, hosted by Slater Memorial Museum, Converse Gallery. The Opening Reception and Awards Ceremony will take place June 22, 1 - 3 pm. For details, please visit www.BrendaLBechtel.com

Gallery hours: Wednesday, Friday, Saturday, Sunday: 1 PM to 5 PM

July 2019

Art Natters: Members News

Sketch Club member, **Nancy Herman** is so happy to be included in the Woodmere Art Museum's Annual Juried Show, The Poetics of Representation. The show runs from June 1st (with an open house on that day from noon to 4:00) until September 2nd. My piece Chopin Ballade #4 is a representation of five measures of the Chopin Ballade in color.



I love sketching at the sessions on Tuesday at the Sketch Club. When I get home, I try to dream up a story to go with the experience. I alter the color and add my artwork to the walls with patterns from my wall hangings and fabric designs wherever possible that seem to fit the mood. I keep all the layers separate in Photoshop and then add them one at a time in Final Cut Pro. Choosing the music is the last part and takes several days.

Here's a new video for July: [AT THE SKETCH CLUB #4](#).


Chopin Ballads #4; Digital Print 30" X 30"

From Sketch Club member, **Ellen Cooper**.

Painting the Portrait -

Intensive workshops with acclaimed portrait artist

Ellen Cooper



Learn ...

- Composition*
- Form and light*
- Capturing a likeness*
- Color and value*

Ellen Cooper is a Signature Status, PSOA artist whose canvases have won numerous international awards and whose portraits hang in private and public collections around the country.

July 07-13, 2019 at Heron Crest Studios, Aston PA. For more details and to register please go to: www.ellencooper.net

Art Natters: Members News

From Sketch Club member **Su Horthy**

2019 Friends' Juried Exhibition
The Delaware Contemporary
May 21 - September 26, 2019
Opening Reception: Friday, June 7, 2019
5 - 9 PM during first Friday Art Loop
Juried by Cynthia Hawkins, PhD

Tacit, the unspoken force at the core of this year's Friends Juried Group Exhibition that implies the manner in which each artist interprets the world. The tableaux underlying their personal narratives or visions are told through the artist's handling of the material in varied, covert, and self-evident ways. The common thread weaving through the individual work is their tacit ability to break free from rigid or confined rules. Art is not only about bold color harmony, mark-making, representative imagery, or purely abstract concepts, but often connotes unspoken messages meant to invite dialogue that unlocks the human imagination, thereby freeing its limitations.



Color Pops 20, 2017, Oil on canvas, 18 x 24"

This exhibition includes 15 regional artists who work with conventional and avant-garde processes and examine the subtle ways in which to communicate and translate emotions, identity, ritual, or experience. The interconnection is rendered with repetitive linear marks, shapes, and nuanced color. Guest juror Cynthia Hawkins remarked, "The works submitted were inclusive of the greatest range of styles and media with a variety of understandings of content and narrative. The collection of art works illustrates clearly the breadth of approaches to art, and that indeed we all have something to say about the world we live in. Congratulations to all."

The 2019 Friends' Juried participating artists are Sherry Brilliant, Bill Buck, Candace diCarlo, Marlowe merson, Linnie Greenberg, Su Knoll Horthy, Irwin Freeman, Jack Knight, Gail Kolflat, Chloe McEldowney, Rafael Montoya, Aleksandar Popovic, Merrill Smith, William Spiker, and Peter Trieber. Cynthia Hawkins received her PhD in American Studies in the Department of Transnational Studies at the University of Buffalo. She is the Gallery Director and Curator for State University of New York, Geneseo's Bertha Lederer Gallery and Lockhart Gallery. She received her MA in Museum Studies from Seton Hall University. With her scholarship, Hawkins maintains an art practice. She is a long-time abstract painter using a variety of media. Hawkins received her BA in painting from Queens College, CUNY, and an MFA in painting from Maryland Institute College of Art. Her artwork has been exhibited throughout the Mid-Atlantic and Mexico, and venues including the Bronx Museum of Art, Rush Art Foundation, NY, Trenton City Museum, NJ, Aljira, a Center for Contemporary Art, NJ, Clark Atlanta University Art Galleries, GA, and the Wilmer Jennings Gallery, NY. Beckler Family Gallery

The Delaware Contemporary, 200 S. Madison St., Wilmington, DE 19801

Art Natters: Members News

From Sketch Club member **Claire Lynch**:

Landscape painting in Mount Desert, Maine and Jamestown, Rhode Island



This workshop is for painters of every experience including first time painters. Emphasis is on learning to gain confidence in mixing color and seeing more clearly. Painting is a matter of translating what we see into color, shape, and light and shadow. Through demonstrations and direct guidance, students will produce several paintings and gain valuable experience. We will paint from 9am to 5pm with time out for a lunch break. Working on six consecutive days provides a wonderful opportunity for lessons to be reinforced and fundamentals of painting to be grasped.

Painters of all experience levels are welcome – no previous landscape painting experience is required. A materials list will be provided.

The group will be lodging together in a large beautiful house with views of the water (see link). Breakfast, lunch and dinner are included in this workshop. Dining together creates a unique opportunity to combine the pleasure of socializing with the artistic experience of painting each day. After a day of painting it's wonderful to just relax, have a glass of wine and dine with new friends without having to look for a restaurant.

Dates: August 24th to August 31st, Saturday to Saturday

Location: Mount Desert, Maine.

Prices for Workshop, Lodging and all Meals (including wine and b

To Register Contact: pauldusold@verizon.net tel: 215-438-3440

Art Natters: Members News

From Sketch Club member **Clair Giblin**

A.S. Art Foundation

Great Expectations

JULY 21 - AUGUST 24, 2019

Opening Reception: Sunday, July 21, 4 - 6pm

"I went home, with new matters for my thoughts, though with no relief from the old."

- Charles Dickens, *Great Expectations*

Jim Thorpe has always been a town that cultivates and appreciates the arts. That is precisely why we originally decided to open an art foundation in this charming town in 1985.

Sadly, the foundation is only open on the weekends between Memorial Day and Labor Day, due to the expense of heating such a large, historic building.

The A.S. Art Foundation is pleased to present the opening of *Great Expectations*, an exhibition that aligns with our foundation's mission to expose the public to fine abstract art, from both old masters and new artists, and to educate current and future generations on the significant styles of Abstract Expressionism. This group show brings together several young and mid-life artists - all local to Pennsylvania - with the great expectation of showcasing how the abstract tradition continues to influence contemporary art in surprising new ways.

The A.S. Art Foundation resides in the former Presbyterian Church of Mauch Chunk, which dates back to the 1850s and houses Tiffany and Le Farge stained glass windows and intricate, hand carved woodwork. This special and dramatic building is home to one of the largest and most historically pertinent collections of American Abstract Expressionism in Pennsylvania. Focusing primarily on The New York School of Abstract Expressionism, the exhibition center in Jim Thorpe is an ideal setting for these dramatic works.

The artists participating in *Great Expectations* include:

- PAT BADT
- AILLIN BRENNAN
- CLAIRE GIBLIN
- GARY JURYSTA
- JOEL LOBOW
- SARAH MACNEILL
- SHOZO NAGANO
- ROBERT STARK
- BRIAN WIGGINS

Hours:

& Sun, 11:00am - 5:00pm

by appointment

Memorial Day to Fall Foliage



Untitled - acrylic on canvas, ©2019, Claire Giblin - 50"H x 70"W

Sat
and



Gallery hours: Wednesday, Friday, Saturday, Sunday: 1 PM to 5 PM

July 2019

Art Natters: Members News

Sketch Club Open Workshop Schedule

All workshops are open to the public. There is no need to register before attending. You do NOT have to be a member of the Philadelphia Sketch Club to participate in the workshops. Our workshops are open to anyone who is interested in drawing, painting or printmaking. All skill levels are welcome. Fees: Model workshops: \$8/session members, \$9/session for non-PSC members; Printmaking workshop: \$10/session; All workshops \$6 for full-time students. Monitored by PSC members.

Life Model	Costumed Model	Printmaking
<p>Mondays – Extended pose (multi-session): 6:30 PM-9:30PM</p> <p>Monitors: Robert Bohne, Vince Docktor, Dan Kuetemeyer</p> <p>Tuesdays – Extended pose: 12:00 PM to 3:00 PM Monitor: Jacqueline Barnett</p> <p>Wednesdays – Extended pose: 6:30 to 9:30 PM Monitor: Vince Docktor</p> <p>Saturdays – Extended pose: 9:30 AM to 12:30 PM Monitor: Vince Docktor</p>	<p>Thursdays</p> <p>Extended pose 12:00 PM to 3:00 PM Monitor: Bob Bohne.</p>	<p>Tuesdays</p> <p>10:00 AM to 2:00 PM Monitor: Elizabeth H. MacDonald</p>

Please Note: Those who use oil paints should bring their own container(s) to remove used solvents. Odorless solvents only.

Thank you to all the PSC members who donate their time and expertise to make these workshops available to PSC members and the Philadelphia art community.

Gallery hours: Wednesday, Friday, Saturday, Sunday: 1 PM to 5 PM

July 2019

Opportunities/Notices

The Painters' Collective Summer Group Exhibition Opens at The Art Colony Free

Prallsville Mills; Stockton, NJ

June to September 2019

Saturdays and Sundays 1–5 p.m.

Prallsville Mills, 33 Risler St, (along the river off Rt. 29),
Stockton, NJ 08559

For more information: <http://thepainterscollective.com/>



Ty
Hodanish's
legacy lives
on at the Art
Colony
Gallery at
Prallsville



Cindy Ruenes "Cambria CA"

Mills through The Painters' Collective's, eight artists who became fast friends when they met in art class a decade ago. Jeff Charlesworth, Phyllis Haldeman, Kathie Jankauskas, Roy Reinard, **Cindy Ruenes**, Kathy Schroeher, Dave Stahl and Andrea Wallace have taken on the gallery, which was home to their former

teacher, friend and mentor. The art community lost a giant last May, with Ty's passing. In May and June, you would see him at the gallery and at beautiful spots along the area's roadsides, with dozens of students teaching them how to paint in the Impressionist style. The last few winters when he was in Florida, Ty asked the The Painters' Collective to "hold down the fort" until his return in the spring. Now, visitors can see their landscape and still-life oil paintings, pastels and abstract works year around. The Painters' Collective's Summer Exhibition will open on June 1, 2019 and runs into the fall. Visitors will find landscape and still-life oil paintings, as well as pastel and abstract works by the artists, plus a couple of Ty's paintings too. The historic stone gallery beautifully showcases the blend of their styles, and is open Saturdays and Sundays from 1-5 p.m. and by chance during the week. "We're happy to have this opportunity to keep the Art Colony going and growing, and plan to feature other artists throughout the year," said Phyllis Haldeman.

The group takes weekend retreats to paint, and has invited other artists to teach workshops at the Art Colony. "We get energy from our friendship, and from creating art together that makes its way into our work," said member Cindy Ruenes. "We enjoy learning new tricks and getting tips from other artists too; collaborating and the collective spirit makes our art better." Participants in this show have had artwork accepted into various juried shows, including The Phillips' Mill Art Exhibition, The Lambertville Historical Society's Annual Juried Exhibition, The New Hope Arts League Juried Exhibition, The Philadelphia Sketch Club, New Hope Arts Juried Exhibition, The Ellarslie Juried Exhibition at Trenton City Museum, and the Annual Artsbridge Juried Exhibition. Members have also exhibited at Stover Mill, The Tinicum Arts Festival, The Artsbridge Members' Show and The Canal Frame Craft Gallery. The Art Colony Gallery is located at Prallsville Mills, 33 Risler St, (along the river off Rt. 29), Stockton, NJ 08559. The show will be open Saturdays and Sundays 1–5 p.m. throughout the summer.

Opportunities/Notices

MARTHA'S VINEYARD DRAWING PRIZE

CALL FOR ENTRIES | MARTHA'S VINEYARD
DRAWING PRIZE: THE TIES THAT BIND:

- * 2019 is the inaugural year of the Martha's Vineyard Drawing Prize, a competition established to encourage the pursuit of excellence in drawing.
- * Artists are invited to respond to the theme The Ties That Bind.
- * The competition has been created by Martha's Vineyard artist Elizabeth R. Whelan,

and this year's jurors are well-known art collector Monina von Opel, art gallery director Jenn Pillsworth, and fantasy artist Sheila Rayyan.

- * Drawings may be created using graphite, charcoal, Conté, silverpoint, pen & ink, or other suitable drawing media, on paper or board.
- * There are three main prizes: 1st place \$500, 2nd place \$350, and 3rd place \$150, as well as in-kind prizes and awards.
- * This year the competition is online-only, so there is no size restriction, and no need to frame and ship the artwork. And all finalists' artwork will be displayed on the www.mvdrawingprize.com website for the following year.
- * The nationwide call is now underway, and will close Sunday, July 28th, 2019. Winning entries will be announced Sunday, August 11th, 2019.

If you would like more information about this topic including quotes, interviews, and images, please email Elizabeth R. Whelan at erwhelan@gmail.com or call 508560.0083.

Martha's Vineyard Drawing Prize
c/o Elizabeth R. Whelan
9 Sampson Avenue, Edgartown, MA 02539
508.560.0083
<http://www.mvdrawingprize.com/>

Opportunities/Notices

As a courtesy to our non-PSC-member friends, in support of the Philadelphia artist community, we publish your notices, etc., free of charge. However, contributions to the PSC are always welcome and we will gladly consider your application for membership

[Contribute to the Sketch Club Here](#) [Apply for PSC Membership Here](#)

Membership

Not a PSC Member?: Join Now!

If you're reading this edition of the Portfolio and you're not a member of the PSC, you should consider joining the more than 200 other Philadelphia area artists who have. The PSC is one of the most active visual art venues serving center city Philadelphia. The PSC is a hands-on organization that offers its members the opportunity to participate in all aspects of creating and presenting work to the public. It presents over 20 scheduled group and solo exhibitions annually and offers a wide range of daily workshops. [Get info and an application here.](#)

If you are a member of the PSC, please feel free to share the Portfolio with your artist friends and encourage them to become members.

Membership Renewal

You can check the status of your membership by going to the Current Members page on the PSC web-site: <http://sketchclub.org/sample-page/memberspace/>. All current members are listed. An asterisk (*) means that the membership has expired but is within the 60-day grace period for renewal. Names in red are active links to the individual's web site.

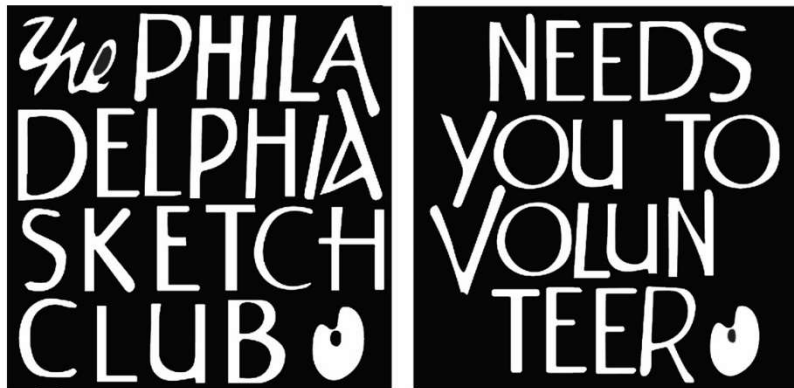
Renew Now! <http://sketchclub.org/annual-dues-payment/>

If you have any questions about your membership, please don't hesitate to contact us at membership@sketchclub.org or call the office: 215-545-9298.

Volunteer

Be an Active Sketc Club Member; Volunteer!!

The Philadelphia Sketch Club is managed entirely by volunteers except for the gallery manager, housekeeping, and bookkeeper.



The PSC always needs volunteer members. Volunteering is one of the most important aspects of being a Sketch Club member and it is the one of the best ways to take advantage of the PSC. You'll be working with colleagues who share the same interests and helping the PSC provide unique services to the visual arts community. Sign up for an activity today.

Here are some of the activities that volunteers perform:

- Chair exhibitions
- Assist in hanging exhibitions
- Covering exhibition drop-offs and pick-ups
- Monitor workshops
- Assist with presentations
- Serve on the Board of Directors
- Serve as Key Circle volunteers
- Publish the Portfolio
- Manage the PSC web site
- Gallery coverage
- Graphics for Portfolio, PSC web site, social media
- Assist in every aspect of managing the club and providing member services

To get involved, contact:

Jackie Barnett

Volunteer Coordinator

Philadelphia Sketch Club

jbarnett12@verizon.net

Gallery hours: Wednesday, Friday, Saturday, Sunday: 1 PM to 5 PM

July 2019

Support the Sketch Club

Contribute

Please consider making your tax-deductible contribution now. These funds will be put to good use providing enhanced services to our members and friends.

Membership dues cover only a small portion of the PSC's operating expenses. Competition for funding for arts organizations like the Sketch Club is increasingly competitive and total funding for the arts is shrinking. Your additional support will keep the PSC an active support for visual artists in the Metropolitan Philadelphia area. The Philadelphia Sketch Club is an IRS designated 501(c) (3) non-profit organization.

You can call the office at 215-545-9298, mail checks to the Sketch Club or visit the Contribute page of our Website.

Visit our **Contribute** page of our website to give online at:

<http://sketchclub.org/support-us/>

You can also support the PSC on an ongoing basis when you shop on Amazon. Go to:

<http://smile.amazon.com/> and enter the Philadelphia Sketch Club in the Pick your own charitable organization box.

Your support makes it possible for the PSC to continue providing ongoing daily workshops and numerous annual gallery exhibitions.



**Sketch Club Members receive a
25% discount at Merion Art.
Use promo code "PSC"
online at www.merionart.com**

"Our staff of experienced artists, custom framers, and designers can answer your art materials questions and help to creatively solve all your artistic problems. Stop in our store for personalized friendly attention, or go to merionart.com for access to thousands of quality art products!"

Monday - Friday: 8:30am - 6:00pm
Saturday: 9:00am - 5:30pm
Sunday: 12:00pm - 5:00pm

Merion Art & Repro Center
17 West Lancaster Avenue
Ardmore, PA 19003

(610) 896-6161 - Phone
(610) 896-7781 - Fax

Gallery hours: Wednesday, Friday, Saturday, Sunday: 1 PM to 5 PM

July 2019

Support the Sketch Club

PHOTOLounge

The PHOTOLounge supports the Philadelphia Sketch Club and its members:

Sketch Club Members receive a 15% discount at PHOTOLounge.

Use online promo code "sketch".

The PHOTOLounge is located at 1909 Chestnut St. Philadelphia PA 19103.

For nearly 20 years, PHOTOLounge's focus has been the simple idea that pictures should be beautiful, affordable, and long lasting. We're a very adept photo lab with diverse services from iPhone printing to shoebox scanning. You can bring us film for processing, and also order prints online, or from the App. Come in and print your world.

Sketch Club Members receive a 15% discount at PHOTOLounge.

Use online promo code "sketch".

267-322-6651 – www.myphtolounge.com

Sketch Club members receive 20% discount



Framing Family Treasures for over 20 Years



We offer a variety of framing materials and techniques including:

- Archival / conservation treatment • Specialty mats (Linen, Suede, Silk)
- Stretching / Blocking of needleart and oils
- 1000's of moulding choices • 22 karat finished corner frames • Memorabilia framing
- Custom toning / coloring • Decorative mat cuts • French matting • Fillets
- Mirrors • Shadowboxing • Dry Mounting

www.CanalFrame.com • CanalFrame@comcast.net • 215-493-3660

1093 General Greene Road, Washington Crossing, PA 18977

Gallery hours: Wednesday, Friday, Saturday, Sunday: 1 PM to 5 PM

July 2019

Support the Sketch Club

Like, Link & Share

If you're not following the Philadelphia Sketch Club on Facebook re-tweeting Sketch Club tweets yet, it's time that you did. We have well over 2000 Facebook followers. Get the word out about the Sketch Club. Please click the like button and share your comments and invite your friends to like our page.

Follow @PhilaSketchClub on Twitter, we have almost 400 followers. Please click the heart button and re-tweet our announcements.

Include links on your website, blogs and social media to The Philadelphia Sketch Club to increase traction across social media platforms.

Follow us on Facebook, Twitter and Instagram now!

Thanks to Don Brewer and Michelle Lockamy for managing PSC social media sites.



Member Classifieds

Seeking Framers

Sketch Club members frequently ask about framing services. If you wish to provide framing services to PSC members, please contact the PSC at info@sketchclub.org or call the PSC office: 215 545-92908



Gallery hours: Wednesday, Friday, Saturday, Sunday: 1 PM to 5 PM

July 2019

The Portfolio: The newsletter of the Philadelphia Sketch Club is published monthly. Editor: Ken Weiner; Technical support and Web Master: Ken Weiner. Send your member news, announcements and corrections to portfolio@sketchclub.org. The due date for all materials is one week before the end of the month.

Back issues of the Portfolio are available at: <http://sketchclub.org/portfolio-archive/>

Thanks to PSC member volunteer **Ken Weiner** for his ongoing support of Sketch Club technology and communications functions.

The Philadelphia Sketch Club

235 S Camac Street
Philadelphia, PA 19107
(215) 545-9298
<http://sketchclub.org/>
executivedirector@sketchclub.org

Gallery Manager: Michelle Lockamy

Officers:

- President: Richard Harrington
- Vice President: Kenneth Weiner
- Secretary: Elise Anzini
- Treasurer: William Patterson

Board of Directors

- Jacqueline Barnett
- Renard Edwards
- Stephen Iwanczuk
- Edward Pluciennik
- Charles F. Tarr
- Gail Williams