

Gallery hours: Wednesday, Friday, Saturday, Sunday: 1 PM to 5 PM

August 2019



Richard Harrington

## This Month's Portfolio

Main Gallery Schedule	2
Stewart Gallery Schedule	4
Sketch Club Activities	7
Art Natters: Members News	11
Sketch Club Open Workshop Schedule	17
Opportunities/Notices	18
Membership	21
Volunteer	22
Support the Sketch Club	23
Member Classifieds	25

Send your member news, announcements and corrections to [portfolio@sketchclub.org](mailto:portfolio@sketchclub.org). The deadline for ALL submissions is 1-week before the end of the month.

Reminder: It's never too late. You can always renew your membership

You may pay online at <http://sketchclub.org/annual-dues-payment/>

or mail your check to:

The Philadelphia Sketch Club  
235 S. Camac St.  
Philadelphia, PA 19107

For questions please contact the Gallery Manager at 213335-545-9298 or email:

[executivedirector@sketchclub.org](mailto:executivedirector@sketchclub.org)

Late Breaking News – See items that were submitted after the publication date. Go to:

[info@sketchclub.org](mailto:info@sketchclub.org)

The PSC general email is: [info@sketchclub](mailto:info@sketchclub)

Gallery hours: Wednesday, Friday, Saturday, Sunday: 1 PM to 5 PM

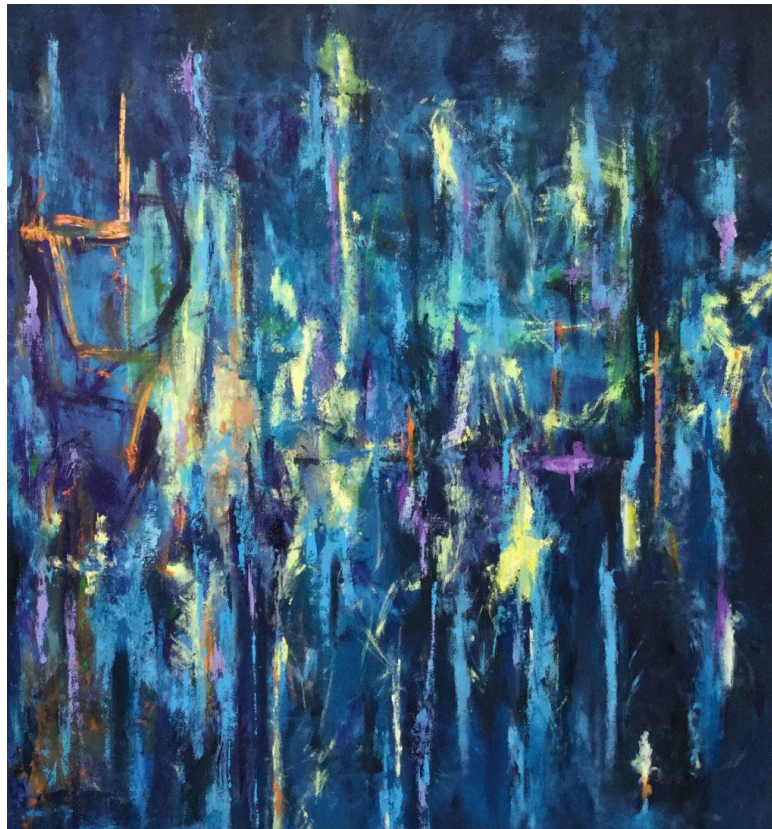
August 2019

## Main Gallery Schedule

[See the 2019 Exhibition Schedule](#)

[Important Dates for all PSC Activites](#)

### **Absolutely Abstract Exhibition** **August 5<sup>th</sup> through August 29<sup>th</sup>, 2019**



**2018-Abst-Best-in-Show: Cathie-Meighan "Uncharted-Waters" Oil on Canvas**

**Reception: Sunday August 11th, 2019, 2:00 – 4:00 PM at the Philadelphia Sketch Club**  
**Awards presented: 3:00 PM**

Gallery hours: Wednesday, Friday, Saturday, Sunday: 1 PM to 5 PM

August 2019

## Main Gallery Schedule

The Gallery is closed in September

**Coming: October 1 – 31: The Annual Members Art Exhibition**





Gallery hours: Wednesday, Friday, Saturday, Sunday: 1 PM to 5 PM

August 2019

## Stewart Gallery Schedule

### New Members Art Exhibition

August 5 – 29

Reception: Sunday August 11th, 2019, 2:00 – 4:00 PM at the Philadelphia Sketch Club



Gallery hours: Wednesday, Friday, Saturday, Sunday: 1 PM to 5 PM

August 2019

## Stewart Gallery Schedule

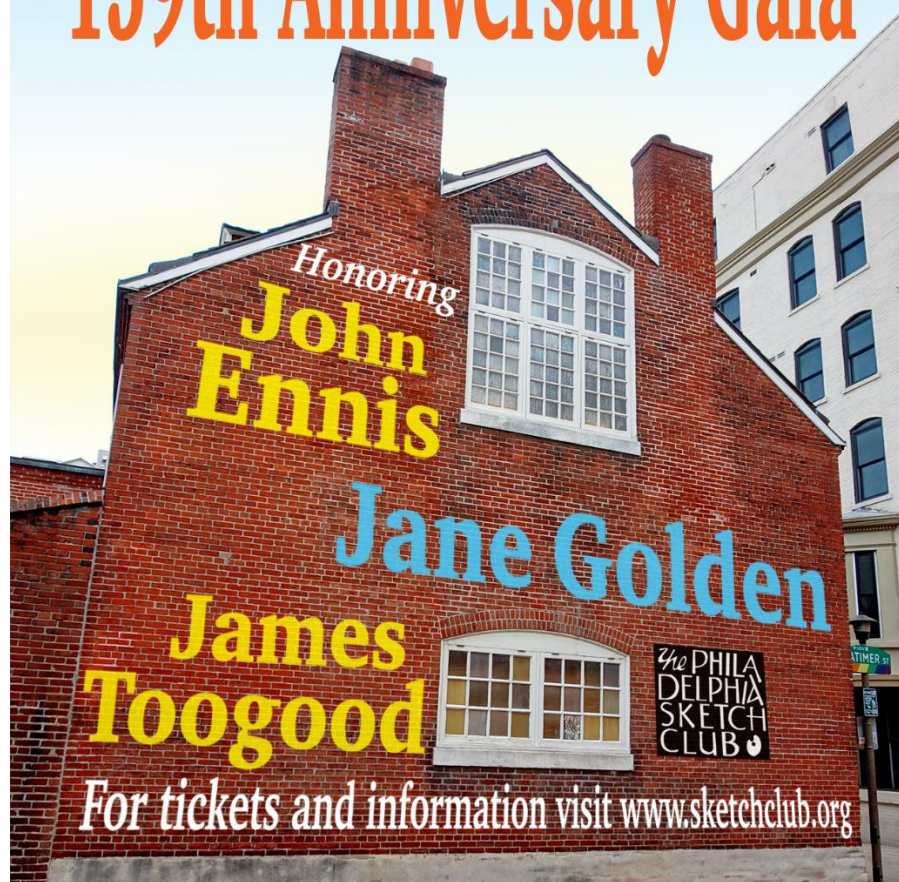
Coming in the Stewart Gallery: The Gallery is closed in September

Coming in October: The Gallery is reserved for the 159<sup>th</sup> Anniversary Gala

*Save the Date*

**October 26th, 2019**

The Philadelphia Sketch Club's  
**159th Anniversary Gala**



Gallery hours: Wednesday, Friday, Saturday, Sunday: 1 PM to 5 PM

August 2019

## Stewart Gallery Schedule



**Exhibition space in the Stewart Gallery is available for PSC Members!**

Reserve the gallery by contacting our Exhibition Coordinator:  
exhibitions@sketchclub.org

The space is \$150 for a month. Members can show once in the Stewart Gallery per year.

[See the 2019 Exhibition Schedule](#)

[Important Dates for all PSC Activities](#)



Gallery hours: Wednesday, Friday, Saturday, Sunday: 1 PM to 5 PM

August 2019

## Sketch Club Activities

### No Dinner Meetings in July and August

Next meeting: September 14<sup>th</sup>, 2019.

Presenter: Sketch Club member, **Matt De Prospero**.

Watch your September Portfolio or your email for additional dinner meeting details



Gallery hours: Wednesday, Friday, Saturday, Sunday: 1 PM to 5 PM

August 2019

## Sketch Club Activities

### Presentation Planned for our November 8, 2019 Dinner Meeting

Guest Presenter: Lorraine Glessner – Cold Wax and Encaustic Techniques

Plan to attend this facinating and informative pre-dinner mini-workshop

#### Biography

*Lorraine Glessner's paintings are composed of multiple layers of images, the paintings resolving into subtly flickering worlds of extremely seductive richness. Some of them resemble images seen through a microscope; others hint at the world seen from far above. -Andrea Kirsh, Philadelphia Introductions*



24 Robbins Avenue Jenkintown, PA  
19046

lorraineglessnerstudio@gmail.com  
lorraineglessner.net  
267-566-7027

Lorraine Glessner's love of surface, pattern, mark making, image and landscape has led her to combine

disparate materials and processes such as silk, wood, wax, pyrography, rust, paper and more in her work. Lorraine is a former Assistant Professor at Tyler School of Art, Temple University, artist mentor, workshop instructor and an award-winning artist. She holds an MFA from Tyler School of Art, Temple University, a BS from Philadelphia University, and an AAS in Computer Graphics from Moore College of Art & Design. She has a diverse art background with skills that include painting, sculpture, graphic design, interior design, textile design, photography, digital imaging and much more. Among her most recent professional achievements is a Second-Place award in Sculpture from Art of the State at the State Museum in Harrisburg, PA, a recently completed artist residency at Jentel Foundation and an acquisition by Kelsey-Seybold Cancer Center in Houston, Texas. Lorraine's work is included in the recently released *Encaustic Art in the 21st Century* by Ashley Rooney and Nuance, a curated book by artist, Michelle Stuart. Lorraine frequently lectures and participates on academic panels at various Conferences including The International Encaustic Conference, SECAC and The College Art Association Annual Conference. Her work is exhibited locally and nationally in galleries, museums, craft centers, schools, libraries, universities, and more. Like her work, Lorraine brings to her teaching a strong interdisciplinary approach, mixed with a balance of concept, process, history, experimentation, problem solving and discovery.

See Lorraine's Work: <https://www.lorraineglessner.net/>



## Sketch Club Activities

### Sketch Club Governance

Official Results of the May election for Sketch Club Board Officers and Directors

#### Officers:

- President: Richard Harrington
- Vice President: Kenneth Weiner
- Secretary: Elise Anzini
- Treasurer: William Patterson

#### Board of Directors

- Jacqueline Barnett
- Renard Edwards\*
- Stephen Iwanczuk
- Edward Pluciennik\*
- Charles F. Tarr
- Gail Williams\*

\*New Member

#### Consider Becoming a Board Member

Do you want to make a lasting impact on the Sketch Club? If you've been a Sketch Club member for a year or more, consider becoming a board member. To find out more, contact any current board member through the PSC office or via email at: <mailto:membership@sketchclub.org>

Gallery hours: Wednesday, Friday, Saturday, Sunday: 1 PM to 5 PM

August 2019

## Sketch Club Activities

### No Critique Night in July and August

Next Critique Night – September 11<sup>th</sup>, 2019 from 7:00 – 9:00 PM

Open to PSC Members and Non-Members

RSVP to Michelle Lockamy at 215-545-9298 or  
[executivedirector@sketchclub.org](mailto:executivedirector@sketchclub.org)

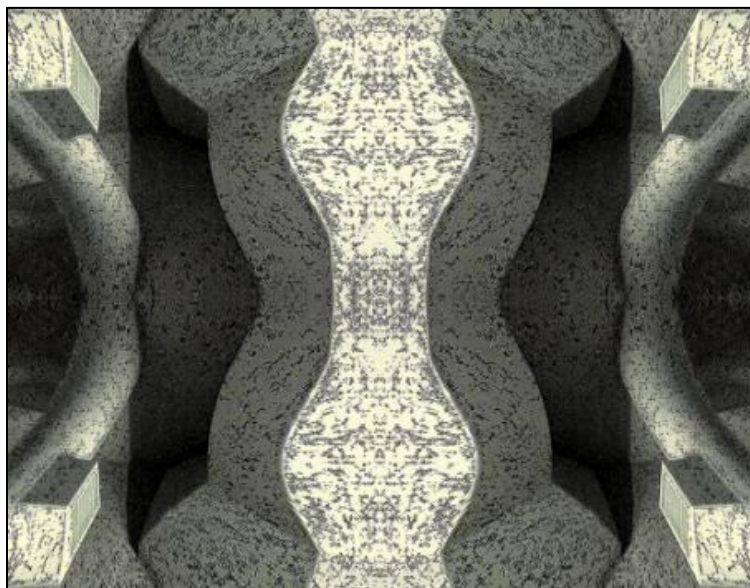
Critique Night is held in the Library of the Sketch Club every third Wednesday beginning at 7 PM. Bring work you've finished, work in progress, or just sketches for work you're planning! Photos, digital work, drawings, all mediums are welcome; we can project digital images on a screen for review, so you have the option to show work that may be too big or too heavy to transport to the Club. There is no one individual directing the critique, just your fellow artists and peers. Facilitated/monitored by Rich Harrington, PSC President



Thanks to PSC member volunteer **Rich Harrington** for organizing and monitoring this event

### No Photo Circle in July and August

Photo Circle– September 12th, 2019 from 6:30 to 8:30 PM



We will discuss new group activities and possibilities for expansion. The Photo Circle meets every 2<sup>nd</sup> Thursday at 6:30 PM. You can contact Steve anytime at [stphniwan@gmail.com](mailto:stphniwan@gmail.com) or 215-300-9192 (cell). **Steve Iwanczuk**, Photo Circle Monitor and Member of Philadelphia Sketch Club Board of Directors.

Thanks to PSC member volunteer **Steve Iwanczuk** for organizing and monitoring this event.

Gallery hours: Wednesday, Friday, Saturday, Sunday: 1 PM to 5 PM

August 2019

## Art Natters: Members News

Sketch Club member **Sally K Eisenberg** will be exhibiting ten paintings in her upcoming solo show at the Da Vinci Art Alliance, entitled **"Number 8"**. The show will be running from August 4th thru the 14th.

**Opening reception: Sunday, August 4th from Noon - 3:00 pm.**

Gallery hours are Thursdays Sundays noon - 5pm or by appointment (215) 550-1446



Seascape-2 acrylic on linen 14"X 11"



"Reflection", acrylic on canvas 24" x 24"



Seascape-1 acrylic on linen 14"X 11"



Gallery hours: Wednesday, Friday, Saturday, Sunday: 1 PM to 5 PM

August 2019

## Art Natters: Members News

Sketch Club member, **Matt DeProspero**, is currently exhibiting his paintings at F.A.N. Gallery in Old City during their Summer Group Show. Matt has three paintings on display, including his work 'Tres Phantasmas' shown below.

The Group Show will be up until the end of August and there is a First Friday reception on 8/2/19. The F.A.N. Gallery is located at 221 Arch St., Philadelphia, PA 19106.



Tres Phantasmas

## Art Natters: Members News

From Sketch Club member **Cindy Ruenes**

### Painters' Collective

#### **GUIDELINES FOR THE FEATURED ARTIST**

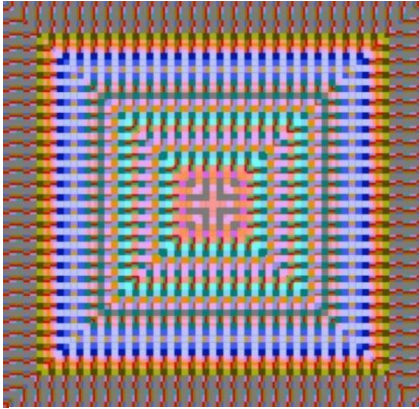
1. The Featured Artist (FA) has use of the plaster-board wall (approximately 8' x 12') at north end of studio. Note that hanging rods are not moveable but nails and hooks may be used between rods.
2. Price — \$200 for one weekend; \$360 for two weekends; \$640 for four weekends.
3. Gallery is open from 1-5pm on Saturday and Sunday. PC members will gallery sit at those times. The Featured Artist is welcome and encouraged to be there. Buyers appreciate meeting the artist.
4. If the Featured Artist is present during gallery hours, FA will handle sales of his/her work. If not, FA agrees that PC representative will accept check or cash for sales of FA work.
5. FA must agree that PC members are not responsible for any loss or damage to FA work for any reason whatsoever.
6. FA is responsible for hanging artwork on the wall. The schedule for hanging artwork must be worked out in advance with PC — generally, the Friday afternoon or Saturday morning before the FA show opens. FA will take down work at the end of a Sunday afternoon or at a mutually agreed upon time with PC.
7. FA can supply refreshments for a show opening during gallery hours. No alcohol is permitted. FA to remove all trash.
8. FA understands that PC will publicize FA show through its mailing list. The FA responsible for other publicity efforts.

Gallery hours: Wednesday, Friday, Saturday, Sunday: 1 PM to 5 PM

August 2019

## Art Natters: Members News

Sketch Club member, **Nancy Herman** is so happy to be included in the Woodmere Art Museum's Annual Juried Show, The Poetics of Representation. The show runs from June 1st (with an open house on that day from noon to 4:00) until September 2nd. My piece Chopin Ballade #4 is a representation of five measures of the Chopin Ballade in color.



Chopin Ballads #4; Digital Print 30" X 30"

I love sketching at the sessions on Tuesday at the Sketch Club. When I get home, I try to dream up a story to go with the experience. I alter the color and add my artwork to the walls with patterns from my wall hangings and fabric designs wherever possible that seem to fit the mood. I keep all the layers separate in Photoshop and then add them one at a time in Final Cut Pro. Choosing the music is the last part and takes several days.

New video for August: [AT THE SKETCH CLUB #5](#)

Here's a video for July: [AT THE SKETCH CLUB #4](#).



Gallery hours: Wednesday, Friday, Saturday, Sunday: 1 PM to 5 PM

August 2019

## Art Natters: Members News

From Sketch Club member **Su Horty**

2019 Friends' Juried Exhibition

The Delaware Contemporary

May 21 - September 26, 2019 |

Opening Reception: Friday, June 7, 2019

5 - 9 PM during first Friday Art Loop

Juried by Cynthia Hawkins, PhD

Tacit, the unspoken force at the core of this year's Friends Juried Group Exhibition that implies the manner in which each artist interprets the world. The tableaux underlying their personal narratives or visions are told through the artist's handling of the material in varied, covert, and self-evident ways. The common thread weaving through the individual work is their tacit ability to break free from rigid or confined rules. Art is not only about bold color harmony, mark-making, representative imagery, or purely abstract concepts, but often connotes unspoken messages meant to invite dialogue that unlocks the human imagination, thereby freeing its limitations.



**Color Pops 20, 2017, Oil on canvas, 18 x 24"**

This exhibition includes 15 regional artists who work with conventional and avant-garde processes and examine the subtle ways in which to communicate and translate emotions, identity, ritual, or experience. The interconnection is rendered with repetitive linear marks, shapes, and nuanced color. Guest juror Cynthia Hawkins remarked, "The works submitted were inclusive of the greatest range of styles and media with a variety of understandings of content and narrative. The collection of art works illustrates clearly the breadth of approaches to art, and that indeed we all have something to say about the world we live in. Congratulations to all."

The 2019 Friends' Juried participating artists are Sherry Brilliant, Bill Buck, Candace diCarlo, Marlowe merson, Linnie Greenberg, Su Knoll Horty, Irwin Freeman, Jack Knight, Gail Kolflat, Chloe McEldowney, Rafael Montoya, Aleksandar Popovic, Merrill Smith, William Spiker, and Peter Trieber. Cynthia Hawkins received her PhD in American Studies in the Department of Transnational Studies at the University of Buffalo. She is the Gallery Director and Curator for State University of New York, Geneseo's Bertha Lederer Gallery and Lockhart Gallery. She received her MA in Museum Studies from Seton Hall University. With her scholarship, Hawkins maintains an art practice. She is a long-time abstract painter using a variety of media. Hawkins received her BA in painting from Queens College, CUNY, and an MFA in painting from Maryland Institute College of Art. Her artwork has been exhibited throughout the Mid-Atlantic and Mexico, and venues including the Bronx Museum of Art, Rush Art Foundation, NY, Trenton City Museum, NJ, Aljira, a Center for Contemporary Art, NJ, Clark Atlanta University Art Galleries, GA, and the Wilmer Jennings Gallery, NY. Beckler Family Gallery

The Delaware Contemporary, 200 S. Madison St., Wilmington, DE 19801

## Art Natters: Members News

From Sketch Club member **Clair Giblin**

### A.S. Art Foundation

#### *Great Expectations*

JULY 21 - AUGUST 24, 2019

Opening Reception: Sunday, July 21, 4 - 6pm

**"I went home, with new matters for my thoughts, though with no relief from the old."**

- Charles Dickens, *Great Expectations*

Jim Thorpe has always been a town that cultivates and appreciates the arts. That is precisely why we originally decided to open an art foundation in this charming town in 1985.

Sadly, the foundation is only open on the weekends between Memorial Day and Labor Day, due to the expense of heating such a large, historic building.

The A.S. Art Foundation is pleased to present the opening of *Great Expectations*, an exhibition that aligns with our foundation's mission to expose the public to fine abstract art, from both old masters and new artists, and to educate current and future generations on the significant styles of Abstract Expressionism. This group show brings together several young and mid-life artists - all local to Pennsylvania - with the great expectation of showcasing how the abstract tradition continues to influence contemporary art in surprising new ways.

The A.S. Art Foundation resides in the former Presbyterian Church of Mauch Chunk, which dates back to the 1850s and houses Tiffany and Le Farge stained glass windows and intricate, hand carved woodwork. This special and dramatic building is home to one of the largest and most historically pertinent collections of American Abstract Expressionism in Pennsylvania. Focusing primarily on The New York School of Abstract Expressionism, the exhibition center in Jim Thorpe is an ideal setting for these dramatic works.

The artists participating in *Great Expectations* include:

- PAT BADT
- AILLIN BRENNAN
- CLAIRE GIBLIN
- GARY JURYSTA
- JOEL LOBOW
- SARAH MACNEILL
- SHOZO NAGANO
- ROBERT STARK
- BRIAN WIGGINS

#### Hours:

Sat & Sun, 11:00am - 5:00pm

and by appointment

Memorial Day to Fall Foliage



Untitled - acrylic on canvas, ©2019, Claire Giblin - 50"H x 70"W

Gallery hours: Wednesday, Friday, Saturday, Sunday: 1 PM to 5 PM

August 2019

## Art Natters: Members News

## Sketch Club Open Workshop Schedule

All workshops are open to the public. There is no need to register before attending. You do NOT have to be a member of the Philadelphia Sketch Club to participate in the workshops. Our workshops are open to anyone who is interested in drawing, painting or printmaking. All skill levels are welcome. Fees: Model workshops: \$8/session members, \$9/session for non-PSC members; Printmaking workshop: \$10/session; All workshops \$6 for full-time students. Monitored by PSC members.

<p>Life Model</p> <p>Mondays – Extended pose (multi-session): 6:30 PM-9:30PM</p> <p>Monitors: Robert Bohne, Vince Docktor, Dan Kuetemeyer</p> <p>Tuesdays – Extended pose: 12:00 PM to 3:00 PM Monitor: Jacqueline Barnett</p> <p>Wednesdays – Extended pose: 6:30 to 9:30 PM Monitor: Vince Docktor</p> <p>Saturdays – Extended pose: 9:30 AM to 12:30 PM Monitor: Vince Docktor</p>	<p>Costumed Model</p> <p>Thursdays</p> <p>Extended pose 12:00 PM to 3:00 PM Monitor: Bob Bohne.</p>	<p>Printmaking</p> <p>Tuesdays</p> <p>10:00 AM to 2:00 PM Monitor: Elizabeth H. MacDonald</p>
---	---	---

Please Note: Those who use oil paints should bring their own container(s) to remove used solvents. Odorless solvents only.

Thank you to all the PSC members who donate their time and expertise to make these workshops available to PSC members and the Philadelphia art community.



Gallery hours: Wednesday, Friday, Saturday, Sunday: 1 PM to 5 PM

August 2019

## Opportunities/Notices

As a courtesy to our non-PSC-member friends, in support of the Philadelphia artist community, we publish your notices, etc., free of charge. However, contributions to the PSC are always welcome. And, we will gladly consider your application for membership

[Contribute to the Sketch Club Here](#) [Apply for PSC Membership Here](#)

### August Deadline for Entries: 13th Annual Juried Photography Exhibit 2019

All photographers are invited to enter Media Arts Council's 13th Annual Juried Photography Exhibit, PhotoEx.

**2019 Theme: "Change/Transformation."** Photos may depict any subject matter in any location, provided they reflect the theme. **Deadline for receiving entries is 7:00 PM, Saturday August 24, 2019, regardless of postmark.**

**Nancy Batty**, this year's juror, brings with her a 30-year career as a museum professional including selecting photography for 3 regional biennial exhibitions, and overseeing the care and growth of 3 museum collections which included photography.

**For more information**, including links to download pdf's of exhibit rules and entry form, go to: <http://MediaArtsCouncil.org/PhotoEx>

**Be sure to like our Facebook page at:**  
<https://www.facebook.com/PhotoExMediaArtsCouncil/>

Media Arts Council Gallery  
609-B W. State Street, Media, PA



**Call for Entries** PHOTO **Ex**

*August is the month to submit your entries!*

Submission Deadline:  
**All entries must be received by 7:00 PM, Saturday August 24, 2019, regardless of postmark**

Media Arts Council's 13th Annual  
Juried Photography Exhibit  
2019 Theme

**CHANGE TRANSFORMATION**

**M·A·C**  
media arts council

For more information,  
links to exhibit rules and entry form:  
**MediaArtsCouncil.org/PhotoEx**

Gallery hours: Wednesday, Friday, Saturday, Sunday: 1 PM to 5 PM

August 2019

## Opportunities/Notices

### The Painters' Collective Summer Group Exhibition Opens at The Art Colony Free

Prallsville Mills; Stockton, NJ

June to September 2019

Saturdays and Sundays 1–5 p.m.

Prallsville Mills, 33 Risler St, (along the river off Rt. 29),  
Stockton, NJ 08559

For more information: <http://thepainterscollective.com/>



Ty  
Hodanish's  
legacy lives  
on at the Art  
Colony  
Gallery at  
Prallsville



Cindy Runes "Cambria CA"

Mills through The Painters' Collective's, eight artists who became fast friends when they met in art class a decade ago. Jeff Charlesworth, Phyllis Haldeman, Kathie Jankauskas, Roy Reinard, **Cindy Ruenes**, Kathy Schroeder, Dave Stahl and Andrea Wallace have taken on the gallery, which was home to their

former teacher, friend and mentor. The art community lost a giant last May, with Ty's passing. In May and June, you would see him at the gallery and at beautiful spots along the area's roadsides, with dozens of students teaching them how to paint in the Impressionist style. The last few winters when he was in Florida, Ty asked the The Painters' Collective to "hold down the fort" until his return in the spring. Now, visitors can see their landscape and still-life oil paintings, pastels and abstract works year around. The Painters' Collective's Summer Exhibition will open on June 1, 2019 and runs into the fall. Visitors will find landscape and still-life oil paintings, as well as pastel and abstract works by the artists, plus a couple of Ty's paintings too. The historic stone gallery beautifully showcases the blend of their styles, and is open Saturdays and Sundays from 1-5 p.m. and by chance during the week. "We're happy to have this opportunity to keep the Art Colony going and growing, and plan to feature other artists throughout the year," said Phyllis Haldeman.

The group takes weekend retreats to paint, and has invited other artists to teach workshops at the Art Colony. "We get energy from our friendship, and from creating art together that makes its way into our work," said member Cindy Ruenes. "We enjoy learning new tricks and getting tips from other artists too; collaborating and the collective spirit makes our art better." Participants in this show have had artwork accepted into various juried shows, including The Phillips' Mill Art Exhibition, The Lambertville Historical Society's Annual Juried Exhibition, The New Hope Arts League Juried Exhibition, The Philadelphia Sketch Club, New Hope Arts Juried Exhibition, The Ellarslie Juried Exhibition at Trenton City Museum, and the Annual Artsbridge Juried Exhibition. Members have also exhibited at Stover Mill, The Tinicum Arts Festival, The Artsbridge Members' Show and The Canal Frame Craft Gallery. The Art Colony Gallery is located at Prallsville Mills, 33 Risler St, (along the river off Rt. 29), Stockton, NJ 08559. The show will be open Saturdays and Sundays 1–5 p.m. throughout the summer.

Gallery hours: Wednesday, Friday, Saturday, Sunday: 1 PM to 5 PM

August 2019

## Opportunities/Notices

### *Acadia Workshop Center*



"Cove in the Mist" 15 x 30 inches

### *Oil Painting Concepts and Techniques En Plein Air*

Join me in Acadia!

This outdoor workshop focuses on oil painting techniques, working directly from nature along the Maine coast.

August 12-16, 2019

9am-4pm

To register, please call 207-460-4119 or go to [www.acadiaworkshopcenter.com](http://www.acadiaworkshopcenter.com)

### **SAVE THE DATE!**

***Attending to Evidence: A Group  
Exhibition***

August 19-September 14

Cynthia Winings Gallery

Blue Hill, Maine

### **Opening reception:**

**Sunday, August 25, 2019**

**4-7 PM**

Thank you for keeping in touch!

Please visit me at [www.christinelafuente.com](http://www.christinelafuente.com)



## Membership

### Not a PSC Member?: Join Now!

If you're reading this edition of the Portfolio and you're not a member of the PSC, you should consider joining the more than 200 other Philadelphia area artists who have. The PSC is one of the most active visual art venues serving center city Philadelphia. The PSC is a hands-on organization that offers its members the opportunity to participate in all aspects of creating and presenting work to the public. It presents over 20 scheduled group and solo exhibitions annually and offers a wide range of daily workshops. [Get info and an application here.](#)

If you are a member of the PSC, please feel free to share the Portfolio with your artist friends and encourage them to become members.

### Membership Renewal

You can check the status of your membership by going to the Current Members page on the PSC web-site: <http://sketchclub.org/sample-page/memberspace/>. All current members are listed. An asterisk (\*) means that the membership has expired but is within the 60-day grace period for renewal. Names in red are active links to the individual's web site.

Renew Now! <http://sketchclub.org/annual-dues-payment/>

If you have any questions about your membership, please don't hesitate to contact us at [membership@sketchclub.org](mailto:membership@sketchclub.org) or call the office: 215-545-9298.

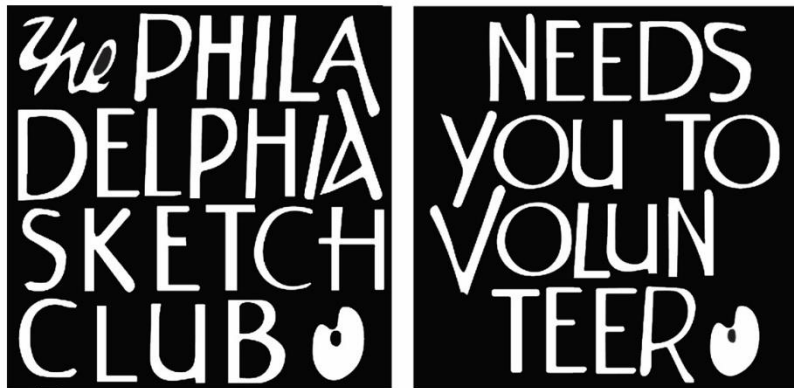
Gallery hours: Wednesday, Friday, Saturday, Sunday: 1 PM to 5 PM

August 2019

## Volunteer

## Be an Active Sketc Club Member; Volunteer!!

The Philadelphia Sketch Club is managed entirely by volunteers except for the gallery manager, housekeeping, and bookkeeper.



The PSC always needs volunteer members. Volunteering is one of the most important aspects of being a Sketch Club member and it is the one of the best ways to take advantage of the PSC. You'll be working with colleagues who share the same interests and helping the PSC provide unique services to the visual arts community. Sign up for an activity today.

Here are some of the activities that volunteers perform:

- Chair exhibitions
- Assist in hanging exhibitions
- Covering exhibition drop-offs and pick-ups
- Monitor workshops
- Assist with presentations
- Serve on the Board of Directors
- Serve as Key Circle volunteers
- Publish the Portfolio
- Manage the PSC web site
- Gallery coverage
- Graphics for Portfolio, PSC web site, social media
- Assist in every aspect of managing the club and providing member services

To get involved, contact:

Jackie Barnett

Volunteer Coordinator

Philadelphia Sketch Club

[jbarnett12@verizon.net](mailto:jbarnett12@verizon.net)

Gallery hours: Wednesday, Friday, Saturday, Sunday: 1 PM to 5 PM

August 2019

## Support the Sketch Club

### Contribute

Please consider making your tax-deductible contribution now. These funds will be put to good use providing enhanced services to our members and friends.

Membership dues cover only a small portion of the PSC's operating expenses. Competition for funding for arts organizations like the Sketch Club is increasingly competitive and total funding for the arts is shrinking. Your additional support will keep the PSC an active support for visual artists in the Metropolitan Philadelphia area. The Philadelphia Sketch Club is an IRS designated 501(c) (3) non-profit organization.

You can call the office at 215-545-9298, mail checks to the Sketch Club or visit the Contribute page of our Website.

Visit our **Contribute** page of our website to give online at:

<http://sketchclub.org/support-us/>

You can also support the PSC on an ongoing basis when you shop on Amazon. Go to:

<http://smile.amazon.com/> and enter the Philadelphia Sketch Club in the Pick your own charitable organization box.

Your support makes it possible for the PSC to continue providing ongoing daily workshops and numerous annual gallery exhibitions.



Sketch Club Members receive a

25% discount at Merion Art.

Use promo code "PSC"

online at [www.merionart.com](http://www.merionart.com)

"Our staff of experienced artists, custom framers, and designers can answer your art materials questions and help to creatively solve all your artistic problems. Stop in our store for personalized friendly attention, or go to [merionart.com](http://merionart.com) for access to thousands of quality art products!"

Monday - Friday: 8:30am - 6:00pm  
Saturday: 9:00am - 5:30pm  
Sunday: 12:00pm - 5:00pm

**Merion Art & Repro Center**  
17 West Lancaster Avenue  
Ardmore, PA 19003

(610) 896-6161 - Phone  
(610) 896-7781 - Fax



Gallery hours: Wednesday, Friday, Saturday, Sunday: 1 PM to 5 PM

August 2019

## Support the Sketch Club

### PHOTOLounge

The PHOTOLounge supports the Philadelphia Sketch Club and its members:

**Sketch Club Members receive a 15% discount at PHOTOLounge.**

**Use online promo code "sketch".**

The PHOTOLounge is located at 1909 Chestnut St. Philadelphia PA 19103.

For nearly 20 years, PHOTOLounge's focus has been the simple idea that pictures should be beautiful, affordable, and long lasting. We're a very adept photo lab with diverse services from iPhone printing to shoebox scanning. You can bring us film for processing, and also order prints online, or from the App. Come in and print your world.

**Sketch Club Members receive a 15% discount at PHOTOLounge.**

**Use online promo code "sketch".**

**267-322-6651 – [www.myphotolounge.com](http://www.myphotolounge.com)**

## Sketch Club members receive 20% discount



Framing Family Treasures for over 20 Years



**We offer a variety of framing materials and techniques including:**

- Archival / conservation treatment • Specialty mats (Linen, Suede, Silk)
- Stretching / Blocking of needleart and oils
- 1000's of moulding choices • 22 karat finished corner frames • Memorabilia framing
- Custom toning / coloring • Decorative mat cuts • French matting • Fillets
- Mirrors • Shadowboxing • Dry Mounting

**[www.CanalFrame.com](http://www.CanalFrame.com) • [CanalFrame@comcast.net](mailto:CanalFrame@comcast.net) • 215-493-3660**

**1093 General Greene Road, Washington Crossing, PA 18977**

Gallery hours: Wednesday, Friday, Saturday, Sunday: 1 PM to 5 PM

August 2019

## Support the Sketch Club

### Like, Link & Share

If you're not following the Philadelphia Sketch Club on Facebook re-tweeting Sketch Club tweets yet, it's time that you did. We have well over 2000 Facebook followers. Get the word out about the Sketch Club. Please click the like button and share your comments and invite your friends to like our page.

Follow @PhilaSketchClub on Twitter, we have almost 400 followers. Please click the heart button and re-tweet our announcements.

Include links on your website, blogs and social media to The Philadelphia Sketch Club to increase traction across social media platforms.

Follow us on Facebook, Twitter and Instagram now!

Thanks to Don Brewer and Michelle Lockamy for managing PSC social media sites.



## Member Classifieds

### Seeking Framers

Sketch Club members frequently ask about framing services. If you wish to provide framing services to PSC members, please contact the PSC at [info@sketchclub.org](mailto:info@sketchclub.org) or call the PSC office: 215 545-92908



Gallery hours: Wednesday, Friday, Saturday, Sunday: 1 PM to 5 PM

August 2019

The Portfolio: The newsletter of the Philadelphia Sketch Club is published monthly. Editor: Ken Weiner; Technical support and Web Master: Ken Weiner. Send your member news, announcements and corrections to [portfolio@sketchclub.org](mailto:portfolio@sketchclub.org). The due date for all materials is one week before the end of the month.

Back issues of the Portfolio are available at: <http://sketchclub.org/portfolio-archive/>

Thanks to PSC member volunteer **Ken Weiner** for his ongoing support of Sketch Club technology and communications functions.

#### **The Philadelphia Sketch Club**

235 S Camac Street  
Philadelphia, PA 19107  
(215) 545-9298  
<http://sketchclub.org/>  
[executivedirector@sketchclub.org](mailto:executivedirector@sketchclub.org)

Gallery Manager: Michelle Lockamy

#### **Officers:**

- President: Richard Harrington
- Vice President: Kenneth Weiner
- Secretary: Elise Anzini
- Treasurer: William Patterson

#### **Board of Directors**

- Jacqueline Barnett
- Renard Edwards
- Stephen Iwanczuk
- Edward Pluciennik
- Charles F. Tarr
- Gail Williams