



Nancy Herman

The Portfolio is the monthly newsletter of the Philadelphia Sketch Club, America's oldest artist club, founded in 1860. There's always something going on at the PSC. To see the full range of ongoing artistic and educational activities available throughout the month and beyond, visit our web-site at: sketchclub.org

This Month's Portfolio

Main Gallery Schedule	2
Stewart Gallery Schedule	3
Sketch Club Activities	4
Art Natters: Members News	7
In Memorium: Charlie Santore	15
Sketch Club Open Workshop Schedule	16
Opportunities/Notices	17
Membership	22
Volunteer	23
Support the Sketch Club	24
Member Classifieds	26
Send your member news, announcements and corrections to portfolio@sketchclub.org . The deadline for ALL submissions is 1-week before the end of the month.	

Reminder: It's never too late. You can always renew your membership

You may pay online at <http://sketchclub.org/annual-dues-payment/>

or mail your check to:

The Philadelphia Sketch Club

235 S. Camac St.

Philadelphia, PA 19107

For questions please contact the Gallery Manager at 213335-545-9298 or email:

executivedirector@sketchclub.org

Late Breaking News – See items that were submitted after the publication date. Go to:

info@sketchclub.org

The PSC general email is: info@sketchclub

Gallery hours: Wednesday, Friday, Saturday, Sunday: 1 PM to 5 PM

September 2019

Main Gallery Schedule

[See the 2019 Exhibition Schedule](#)

[Important Dates for all PSC Activites](#)

The Main Gallery is closed: September 5 – 25

Coming: October 1 – 31: The Annual Members Art Exhibition



Gallery hours: Wednesday, Friday, Saturday, Sunday: 1 PM to 5 PM

September 2019

Stewart Gallery Schedule

The Stewart Gallery is closed: September 5 – 25

October: To be Determined

Note: The gallery is traditionally reserved for the Annual Sketch Club Gala in October. However, this year, the Gala is rescheduled to March 28, 2020. Watch for updates in the October Portfolio or the PSC website at: sketchclub.org.



Exhibition space in the Stewart Gallery is available for PSC Members!

Reserve the gallery by contacting our Exhibition Coordinator:
exhibitions@sketchclub.org

The space is \$150 for a month. Members can show once in the Stewart Gallery per year.

[See the 2019 Exhibition Schedule](#)

[Important Dates for all PSC Activities](#)

Gallery hours: Wednesday, Friday, Saturday, Sunday: 1 PM to 5 PM

September 2019

Sketch Club Activities

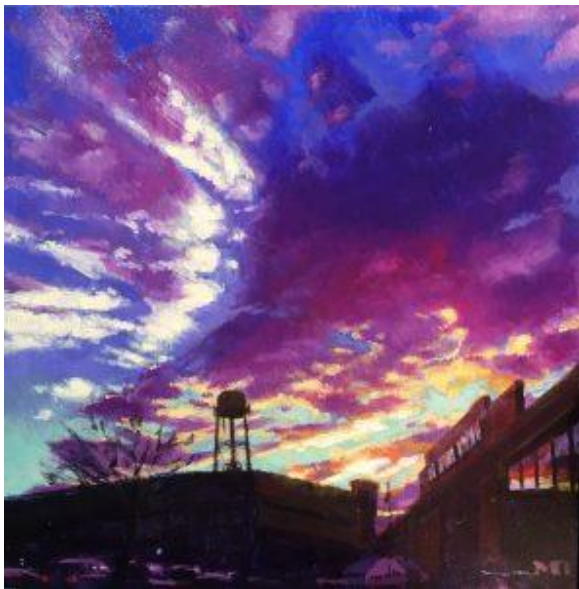
September Dinner Meeting: September 13th

Plan to attend the September 13th dinner meeting. We're excited to catch up with you and hear all about your activities this summer.

Call Michelle at: 215-545-9298, or email executivedirector@sketchclub.org to make your reservation by Wednesday September 11th.

- Social hour and cocktails at 5:00
- Speaker Presentation at 6:15 with **Matt DeProspero**
- Dinner served at 7:15

Members – \$16, Guests – \$18



Matt DeProspero; Depot at Dusk

MENU

- Black Bean Tacos
- Penne with Meatballs
- Mixed Green Salad
- Rolls
- Assorted Cookies for Dessert

Sketch Club member, **Matt DeProspero**, is currently exhibiting his paintings at F.A.N. Gallery in Old City during their Summer Group Show.

Sketch Club Activities

Coming in November 8, 2019 Dinner Meeting

Guest Presenter: Lorraine Glessner – Cold Wax and Encaustic Techniques
Plan to attend this facinating and informative pre-dinner mini-workshop

Biography

Lorraine Glessner's paintings are composed of multiple layers of images, the paintings resolving into subtly flickering worlds of extremely seductive richness. Some of them resemble images seen through a microscope; others hint at the world seen from far above. -Andrea Kirsh, Philadelphia Introductions



24 Robbins Avenue Jenkintown, PA
19046

lorraineglessnerstudio@gmail.com
lorraineglessner.net
267-566-7027

Lorraine Glessner's love of surface, pattern, mark making, image and landscape has led her to combine

disparate materials and processes such as silk, wood, wax, pyrography, rust, paper and more in her work. Lorraine is a former Assistant Professor at Tyler School of Art, Temple University, artist mentor, workshop instructor and an award-winning artist. She holds an MFA from Tyler School of Art, Temple University, a BS from Philadelphia University, and an AAS in Computer Graphics from Moore College of Art & Design. She has a diverse art background with skills that include painting, sculpture, graphic design, interior design, textile design, photography, digital imaging and much more. Among her most recent professional achievements is a Second-Place award in Sculpture from Art of the State at the State Museum in Harrisburg, PA, a recently completed artist residency at Jentel Foundation and an acquisition by Kelsey-Seybold Cancer Center in Houston, Texas. Lorraine's work is included in the recently released *Encaustic Art in the 21st Century* by Ashley Rooney and Nuance, a curated book by artist, Michelle Stuart. Lorraine frequently lectures and participates on academic panels at various Conferences including The International Encaustic Conference, SECAC and The College Art Association Annual Conference. Her work is exhibited locally and nationally in galleries, museums, craft centers, schools, libraries, universities, and more. Like her work, Lorraine brings to her teaching a strong interdisciplinary approach, mixed with a balance of concept, process, history, experimentation, problem solving and discovery.

See Lorraine's Work: <https://www.lorraineglessner.net/>

Gallery hours: Wednesday, Friday, Saturday, Sunday: 1 PM to 5 PM

September 2019

Sketch Club Activities

Critique Night – September 18th, 2019 from 7:00 – 9:00 PM

Open to PSC Members and Non-Members

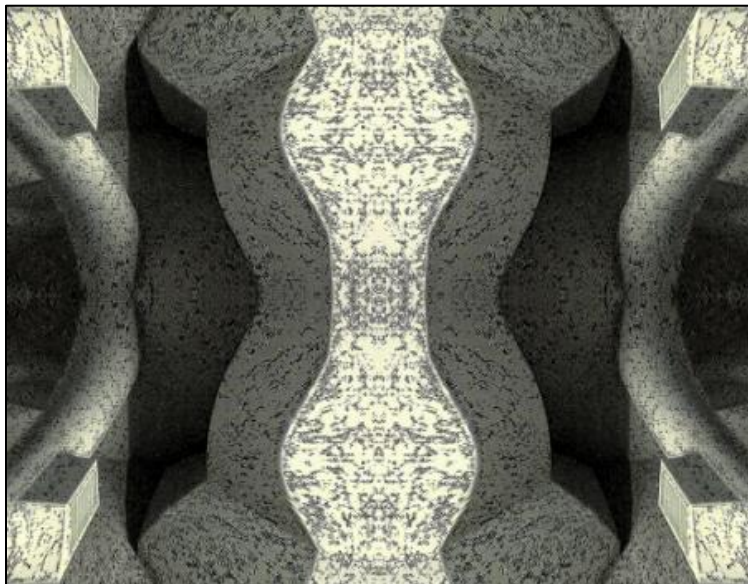
RSVP to Michelle Lockamy at 215-545-9298 or
executivedirector@sketchclub.org

Critique Night is held in the Library of the Sketch Club every third Wednesday beginning at 7 PM. Bring work you've finished, work in progress, or just sketches for work you're planning! Photos, digital work, drawings, all mediums are welcome; we can project digital images on a screen for review, so you have the option to show work that may be too big or too heavy to transport to the Club. There is no one individual directing the critique, just your fellow artists and peers. Facilitated/monitored by Rich Harrington, PSC President



Thanks to PSC member volunteer **Rich Harrington** for organizing and monitoring this event

Photo Circle– September 12th, 2019 from 6:30 to 8:30 PM



We will discuss new group activities and possibilities for expansion. The Photo Circle meets every 2nd Thursday at 6:30 PM. You can contact Steve anytime at stphniwan@gmail.com or 215-300-9192 (cell). **Steve Iwanczuk**, Photo Circle Monitor and Member of Philadelphia Sketch Club Board of Directors.

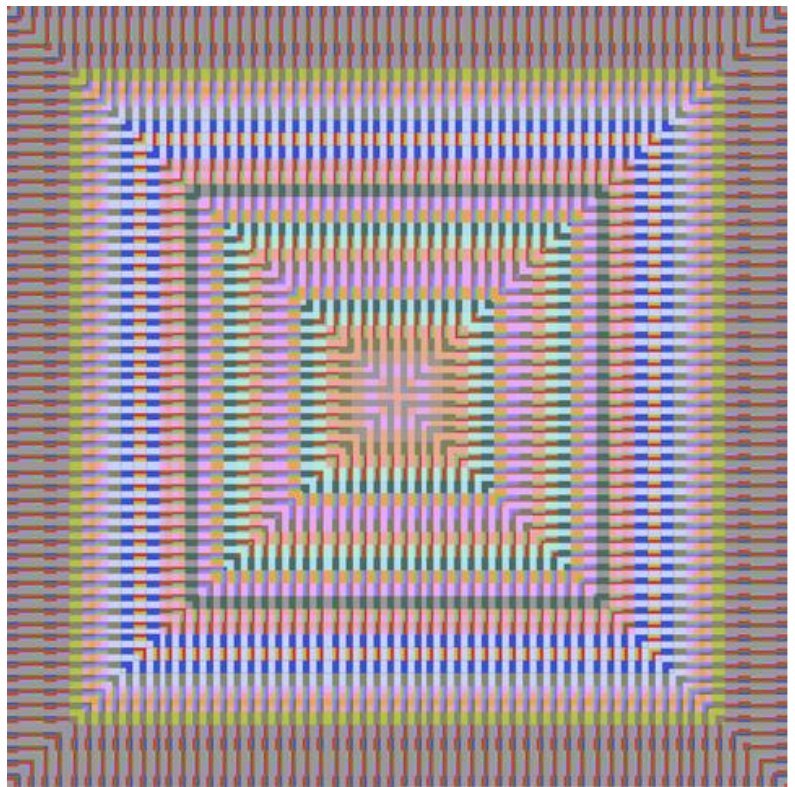
Thanks to PSC member volunteer **Steve Iwanczuk** for organizing and monitoring this event.

Art Natters: Members News

This Month's Banner Artist

Sketch Club member, **Nancy Herman** is so happy to be included in the Woodmere Art Museum's Annual Juried Show, The Poetics of Representation. The show runs from June 1st (with an open house on that day from noon to 4:00) until September 2nd. My piece Chopin Ballade #4 is a representation of five measures of the Chopin Ballade in color.

I love sketching at the sessions on Tuesday at the Sketch Club. When I get home, I try to dream up a story to go with the experience. I alter the color and add my artwork to the walls with patterns from my wall hangings and fabric designs wherever possible that seem to fit the mood. I keep all the layers separate in Photoshop and then add them one at a time in Final Cut Pro. Choosing the music is the last part and takes several days.



Chopin Ballads #4; Digital Print 30" X 30"

- **New:** Video for September:, [The Sketch Club #6, Spectators.](#)
- Video for August: [AT THE SKETCH CLUB #5](#)
- Video for July: [AT THE SKETCH CLUB #4.](#)

Gallery hours: Wednesday, Friday, Saturday, Sunday: 1 PM to 5 PM

September 2019

Art Natters: Members News

Joseph DeFay



Richard Harrington



GHOSTS

September 5th thru October 6th 2019

AG

ARTISTS
GALLERY

Sketch Club member **Richard Harrington** will have his work featured in "Ghosts", a two-person exhibition with photographer Joseph DeFay at the Artists' Gallery in Lambertville, New Jersey. The exhibition runs from September 5th through October 6th, 2019. The opening reception will be on September 14th, 4-7 PM, at the gallery located at 18 Bridge Street in Lambertville.

Art Natters: Members News

PSC Member **Mary Waltham** has a solo exhibition in her native England from Sept 10->Nov 17th at the Gilbert White House and Gardens in Selborne, Hampshire (https://gilbertwhiteshouse.org.uk/exhibition-pond/?event_date=2019-09-10).

Pond: Mere, Rune and Flint is a direct response to the quiet beauty and mystery of the ancient ponds in Hampshire. It includes paintings, drawings and photographs documenting a site-specific installation.

Ponds are a common feature of the landscape, and in early human settlements they were a shared water resource for humans and animals. On areas of common land used for grazing livestock, ponds were essential. Ponds are not connected to each other or to other water bodies; they are only fed by rainwater or groundwater.

The rich and complex ecosystem that relies on each small pond became especially threatened during the summer of 2018 when there was a drought in Southern England.

One Saxon era pond – Wood Pond on Selborne Common, Hampshire, England - virtually dried up. In exploring what Saxon farmers in Selborne might have done in response to drought, Mary asks what action do we in the twenty-first century have in our power to do in the face of drought, flood and our changing climate?



Pond: Mere, Rune and Flint

Art Natters: Members News

From Sketch Club member **Su Horty**

2019 Friends' Juried Exhibition
The Delaware Contemporary
May 21 - September 26, 2019
Opening Reception: Friday, June 7, 2019
5 - 9 PM during first Friday Art Loop
Juried by Cynthia Hawkins, PhD

Tacit, the unspoken force at the core of this year's Friends Juried Group Exhibition that implies the manner in which each artist interprets the world. The tableaux underlying their personal narratives or visions are told through the artist's handling of the material in varied, covert, and self-evident ways. The common thread weaving through the individual work is their tacit ability to break free from rigid or confined rules. Art is not only about bold color harmony, mark-making, representative imagery, or purely abstract concepts, but often connotes unspoken messages meant to invite dialogue that unlocks the human imagination, thereby freeing its limitations.



Color Pops 20, 2017, Oil on canvas, 18 x 24"

This exhibition includes 15 regional artists who work with conventional and avant-garde processes and examine the subtle ways in which to communicate and translate emotions, identity, ritual, or experience. The interconnection is rendered with repetitive linear marks, shapes, and nuanced color. Guest juror Cynthia Hawkins remarked, "The works submitted were inclusive of the greatest range of styles and media with a variety of understandings of content and narrative. The collection of art works illustrates clearly the breadth of approaches to art, and that indeed we all have something to say about the world we live in. Congratulations to all."

The 2019 Friends' Juried participating artists are Sherry Brilliant, Bill Buck, Candace diCarlo, Marlowe merson, Linnie Greenberg, Su Knoll Horty, Irwin Freeman, Jack Knight, Gail Kolflat, Chloe McEldowney, Rafael Montoya, Aleksandar Popovic, Merrill Smith, William Spiker, and Peter Trieber. Cynthia Hawkins received her PhD in American Studies in the Department of Transnational Studies at the University of Buffalo. She is the Gallery Director and Curator for State University of New York, Geneseo's Bertha Lederer Gallery and Lockhart Gallery. She received her MA in Museum Studies from Seton Hall University. With her scholarship, Hawkins maintains an art practice. She is a long-time abstract painter using a variety of media. Hawkins received her BA in painting from Queens College, CUNY, and an MFA in painting from Maryland Institute College of Art. Her artwork has been exhibited throughout the Mid-Atlantic and Mexico, and venues including the Bronx Museum of Art, Rush Art Foundation, NY, Trenton City Museum, NJ, Aljira, a Center for Contemporary Art, NJ, Clark Atlanta University Art Galleries, GA, and the Wilmer Jennings Gallery, NY. Beckler Family Gallery

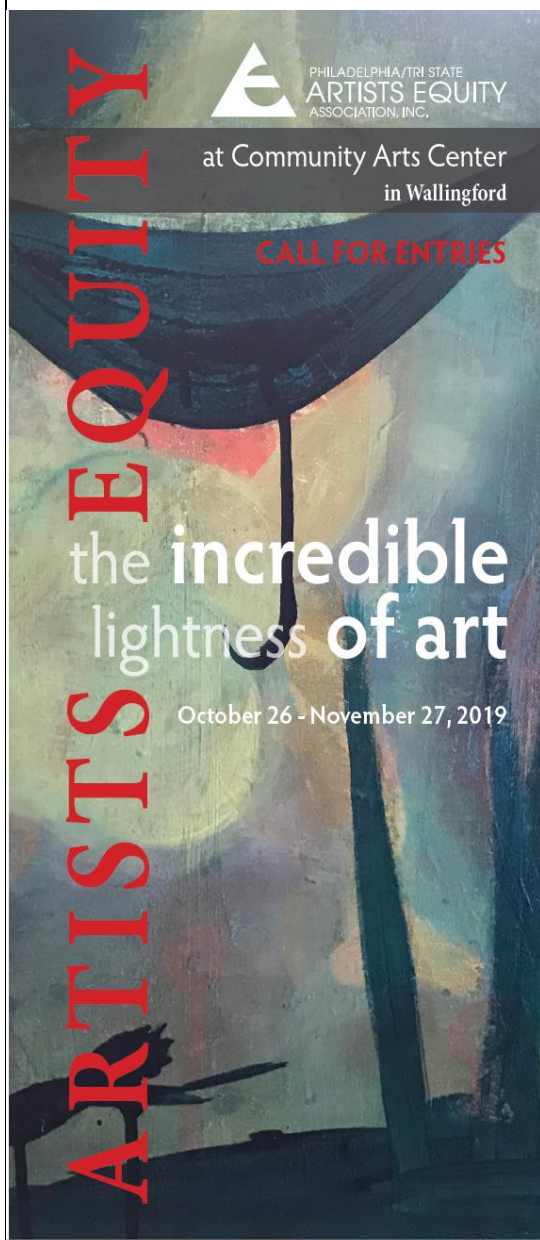
The Delaware Contemporary, 200 S. Madison St., Wilmington, DE 19801

Gallery hours: Wednesday, Friday, Saturday, Sunday: 1 PM to 5 PM

September 2019

Art Natters: Members News

From PSC member, **Barbara Dirnbach**



Announcement from Philadelphia / Tri-State Artists Equity

Our Fall Juried Members Show, *The Incredible Lightness of Art*, at the Community Arts Center in Wallingford will be held in November 2019. Jurying will be done at delivery by PAFA instructor Michael Gallagher who will jury in person at the center. The Center is located at 414 Plush Mill Rd, Wallingford, PA 19086. (Map Here: <http://bit.ly/2KCDtrz>)

Our shows are always great opportunities for area artists too display their work and for art lovers & collectors to experience a wide variety of genres.

Mark your calendars for delivery on October 21, 2019, 1 - 6 pm; the opening reception will be Sunday, November 3rd, 2 to 4 pm.

LATEST DUES INFO: JOIN NOW FOR \$35 — HALF-YEAR AE MEMBERSHIP SPECIAL, July 1 – December 31, 2019. You can join at our website. <http://www.artistsequity.org/>

Other than the cost of joining there is no fee to enter the show.

CALENDAR

Mon, Oct 21	1 - 6 pm: Deliver up to 2 pieces to Community Art Center Entrants send postcards to network and buyers
Tues, Oct 22	Jury and prize selection by Michael Gallagher
Wed, Oct 23	Notification of NON-ACCEPTANCE ONLY (if you do not hear, you're in)
Sat, Oct 26	9:30 am - 12:30 pm: Critique by juror for first 15 artists 1 - 4 pm: Pick-up work not accepted
Sun, Nov 3	2 - 4 pm Reception and Awards
Tues, Nov 27	2 - 4 pm: Closing Reception 4 - 6 pm: Pick-up all work

Art Natters: Members News

JOSEPH SWEENEY FINE ART

Fall 2019 Class Schedule



Plein Air Painting In Cape May

Sep 5 - 8th, 2019 | Sun, Thu,
Fri, and Sat for 1 weekend

Join Joe Sweeney for a plein air painting retreat in beautiful Cape May, New Jersey! Experience small-town hospitality while painting Cape May Point, the Cove with sweeping vistas, Cape May Lighthouse, and Sunset Beach. Class includes tips on choosing a prime location, reading the weather and light at

a particular time of day, and setting up a landscape palette. Morning and evening painting times will leave the afternoons free to relax on the beach—the perfect artist's getaway! Instruction geared towards oil, acrylic, and pastel, but experienced watercolorists are welcome.

Times variable. For more information and recommended accommodations, email joesweeney5@gmail.com.

Please note: This class meets off-campus in Cape May, NJ.

* Use Promo Code **NOFEE2019** to waive the \$1.99 processing fee through September 13.

Materials List: Sweeney PT 605CM \$595 [Sign Up](#)

Art Natters: Members News

Joseph Sweeney Fine Art Fall 2019 Class Schedule

Painting with Open Acrylics

Oct 3 - Dec 12th, 2019 | Thu for 10 weeks from 9:00 am - 12:00 pm

Samuel M.V. Hamilton Building, Room 610
128 North Broad Street, Philadelphia, PA 19102

* Use Promo Code **NOFEE2019** to waive the \$1.99 processing fee through September 13.

Materials List: Sweeney PT 608 EO

\$410 See more info and: [Sign Up](#)

The Pennsylvania Landscape Tradition: New Hope

Oct 2 - Nov 6th, 2019 | Wed for 6 weeks from 10:00 am - 3:00 pm

* Use Promo Code **NOFEE2019** to waive the \$1.99 processing fee through September 13.

Materials List: Sweeney PT 748EB

\$395 See more info and [Sign Up](#)

Aqueous Media Pastel & Oil Painting - FA19.289.M

Sept. 16, 2019 to Dec. 9, 2019

Each Mon 9:30am to 12:30pm or 1:00pm to 4:00pm

Except: Mon, Sept. 30, 2019

Location: Wayne Art Center

Facility: Studio UP 1

Price: \$375.00 See more info and [Sign Up](#)

Gender: Coed

Spaces: 13 openings remaining

Registration Dates: Opens Jul 15, 2019, Closes Nov 1, 2019

Description: Working from still life set-ups, learn the various techniques of aqueous media used for creating light, structure, texture, transparency and opacity. While the focus of the class is water-based acrylics, students are welcome to work in pastels or oil if they prefer. Instructor demonstrations and group discussion, as well as individual attention, provided during each class session.

Art Natters: Members News

From Sketch Club member **Clair Giblin**

A.S. Art Foundation

Great Expectations

JULY 21 - AUGUST 24, 2019

Opening Reception: Sunday, July 21, 4 - 6pm

"I went home, with new matters for my thoughts, though with no relief from the old."

- Charles Dickens, *Great Expectations*

Jim Thorpe has always been a town that cultivates and appreciates the arts. That is precisely why we originally decided to open an art foundation in this charming town in 1985.

Sadly, the foundation is only open on the weekends between Memorial Day and Labor Day, due to the expense of heating such a large, historic building.

The A.S. Art Foundation is pleased to present the opening of *Great Expectations*, an exhibition that aligns with our foundation's mission to expose the public to fine abstract art, from both old masters and new artists, and to educate current and future generations on the significant styles of Abstract Expressionism. This group show brings together several young and mid-life artists - all local to Pennsylvania - with the great expectation of showcasing how the abstract tradition continues to influence contemporary art in surprising new ways.

The A.S. Art Foundation resides in the former Presbyterian Church of Mauch Chunk, which dates back to the 1850s and houses Tiffany and Le Farge stained glass windows and intricate, hand carved woodwork. This special and dramatic building is home to one of the largest and most historically pertinent collections of American Abstract Expressionism in Pennsylvania. Focusing primarily on The New York School of Abstract Expressionism, the exhibition center in Jim Thorpe is an ideal setting for these dramatic works.

The artists participating in *Great Expectations* include:

- PAT BADT
- AILLIN BRENNAN
- CLAIRE GIBLIN
- GARY JURYSTA
- JOEL LOBOW
- SARAH MACNEILL
- SHOZO NAGANO
- ROBERT STARK
- BRIAN WIGGINS



Untitled - acrylic on canvas, ©2019, Claire Giblin - 50"H x 70"W

Hours:

Sat & Sun, 11:00am - 5:00pm
and by appointment
Memorial Day to Fall Foliage

Gallery hours: Wednesday, Friday, Saturday, Sunday: 1 PM to 5 PM

September 2019

In Memorium: Charlie Santore

Illustrator Charlie Santore passed away on August 11th, 2019. He was 84 and had maintained the same studio on 20th at Sansom streets since 1960. He was not a member of the Philadelphia Sketch Club, but he had spoken there on several occasions, and had exhibited in the annual Phillustration exhibition since 2007.

Charlie was inducted into the Society of Illustrators Hall of Fame, and his work is in the permanent collection of The Woodmere and The National Portrait Gallery. He was best known for illustrating classic children's books, including "Alice in Wonderland" and "Aesop's Fables". His obituary in the Philadelphia Inquirer can be found here: <https://www.inquirer.com/obituaries/charles-santore-south-philadelphia-illustrator-artist-tv-guide-20190816.html>

A memorial service for Charlie will be held on Saturday, September 7, 10 AM to 1 PM at the University of the Arts- Solmssen Court, Dorrance Hamilton Hall on Broad at Pine Streets.



A watercolor illustration by Charles Santore for "Alice in Wonderland".

Gallery hours: Wednesday, Friday, Saturday, Sunday: 1 PM to 5 PM

September 2019

Sketch Club Open Workshop Schedule

All workshops are open to the public. There is no need to register before attending. You do NOT have to be a member of the Philadelphia Sketch Club to participate in the workshops. Our workshops are open to anyone who is interested in drawing, painting or printmaking. All skill levels are welcome. Fees: Model workshops: \$8/session members, \$9/session for non-PSC members; Printmaking workshop: \$10/session; All workshops \$6 for full-time students. Monitored by PSC members.

Life Model	Costumed Model	Printmaking
<p>Mondays – Extended pose (multi-session): 6:30 PM-9:30PM</p> <p>Monitors: Robert Bohne, Vince Docktor, Dan Kuetemeyer</p> <p>Tuesdays – Extended pose: 12:00 PM to 3:00 PM Monitor: Jacqueline Barnett</p> <p>Wednesdays – Extended pose: 6:30 to 9:30 PM Monitor: Vince Docktor</p> <p>Saturdays – Extended pose: 9:30 AM to 12:30 PM Monitor: Vince Docktor</p>	<p>Thursdays</p> <p>Extended pose 12:00 PM to 3:00 PM Monitor: Bob Bohne.</p>	<p>Tuesdays</p> <p>10:00 AM to 2:00 PM Monitor: Elizabeth H. MacDonald</p>

Please Note: Those who use oil paints should bring their own container(s) to remove used solvents. Odorless solvents only.

Thank you to all the PSC members who donate their time and expertise to make these workshops available to PSC members and the Philadelphia art community.

Opportunities/Notices

As a courtesy to our non-PSC-member friends, in support of the Philadelphia artist community, we publish your notices, etc., free of charge. However, contributions to the PSC are always welcome. And, we will gladly consider your application for membership

[Contribute to the Sketch Club Here](#) [Apply for PSC Membership Here](#)



The Cosmopolitan Club of Philadelphia

invites you to an exhibition of paintings by

Margo Tassi

September 13-October 24, 2019

Opening Reception:

Friday, September 13, 2019 5:00-7:00 PM

Meet the Artist Evening:

Thursday, October 17, 2019 5:00-7:00 PM

The Club is open Monday through Friday
10:00-noon and 2:00-4:00 PM

Call Louise Kahana at 215-735-1057 ex. 10
to confirm or
for lunch reservations from 12:00-2:00 PM

1616 Latimer St., Philadelphia, PA 19103

www.cosclub.org
reservations@cosclub.org



"Warm and Cool Rocks" O/C 16"x 16"

Painter, **Margo Tassi** painted "Warm and Cool Rocks" (O/C 16"x 16") at Cape St. Mary, Nova Scotia. It will be shown at the Cosmopolitan Club from September 13th to October 24 with 21 other works by the same artist. The opening reception is September 13, 2019 from 5:00-7:00 PM. The Meet the Artist Evening is October 17, 2019 from 5:00-7:00 PM. Call the Club at 215-735-1057 ex.10 for information about other times to see the show. The Club is at 1616 Latimer St. 19103

Gallery hours: Wednesday, Friday, Saturday, Sunday: 1 PM to 5 PM

September 2019

Opportunities/Notices

From **Sallie Marshal**: I am happy to say that I have recently begun classes at PAFA's low residency MFA program. I had a fantastic summer, with incredible professors, and access to a sculpture studio of my dreams. I am overjoyed to be part of this program, and I can't wait to begin my fall semester there. A special thanks to all of the following professors: John Grieg Jr, Alexis Granwell, Kevin Richards, Kate Moran, Eileen Neff, Sam Wagner, and all of the extended team who have welcomed me into the program. Each of their unique viewpoints, knowledge of art, and encouragement has taken me into artistic territory that I never imagined possible. Here are five images of my sculptures that I created over the summer.



Opportunities/Notices

The Painters' Collective Summer Group Exhibition Opens at The Art Colony Free

Prallsville Mills; Stockton, NJ

June to September 2019

Saturdays and Sundays 1–5 p.m.

Prallsville Mills, 33 Risler St, (along the river off Rt. 29),

Stockton, NJ 08559

For more information: <http://thepainterscollective.com/>



Ty
Hodanish's
legacy lives
on at the Art
Colony
Gallery at
Prallsville



Cindy Runes "Cambria CA"

Mills through The Painters' Collective's, eight artists who became fast friends when they met in art class a decade ago. Jeff Charlesworth, Phyllis Haldeman, Kathie Jankauskas, Roy Reinard, **Cindy Ruenes**, Kathy Schroeder, Dave Stahl and Andrea Wallace have taken on the gallery, which was home to their

former teacher, friend and mentor. The art community lost a giant last May, with Ty's passing. In May and June, you would see him at the gallery and at beautiful spots along the area's roadsides, with dozens of students teaching them how to paint in the Impressionist style. The last few winters when he was in Florida, Ty asked the The Painters' Collective to "hold down the fort" until his return in the spring. Now, visitors can see their landscape and still-life oil paintings, pastels and abstract works year around. The Painters' Collective's Summer Exhibition will open on June 1, 2019 and runs into the fall. Visitors will find landscape and still-life oil paintings, as well as pastel and abstract works by the artists, plus a couple of Ty's paintings too. The historic stone gallery beautifully showcases the blend of their styles, and is open Saturdays and Sundays from 1-5 p.m. and by chance during the week. "We're happy to have this opportunity to keep the Art Colony going and growing, and plan to feature other artists throughout the year," said Phyllis Haldeman.

The group takes weekend retreats to paint, and has invited other artists to teach workshops at the Art Colony. "We get energy from our friendship, and from creating art together that makes its way into our work," said member Cindy Ruenes. "We enjoy learning new tricks and getting tips from other artists too; collaborating and the collective spirit makes our art better." Participants in this show have had artwork accepted into various juried shows, including The Phillips' Mill Art Exhibition, The Lambertville Historical Society's Annual Juried Exhibition, The New Hope Arts League Juried Exhibition, The Philadelphia Sketch Club, New Hope Arts Juried Exhibition, The Ellarslie Juried Exhibition at Trenton City Museum, and the Annual Artsbridge Juried Exhibition. Members have also exhibited at Stover Mill, The Tinicum Arts Festival, The Artsbridge Members' Show and The Canal Frame Craft Gallery. The Art Colony Gallery is located at Prallsville Mills, 33 Risler St, (along the river off Rt. 29), Stockton, NJ 08559. The show will be open Saturdays and Sundays 1–5 p.m. throughout the summer.

Gallery hours: Wednesday, Friday, Saturday, Sunday: 1 PM to 5 PM

September 2019

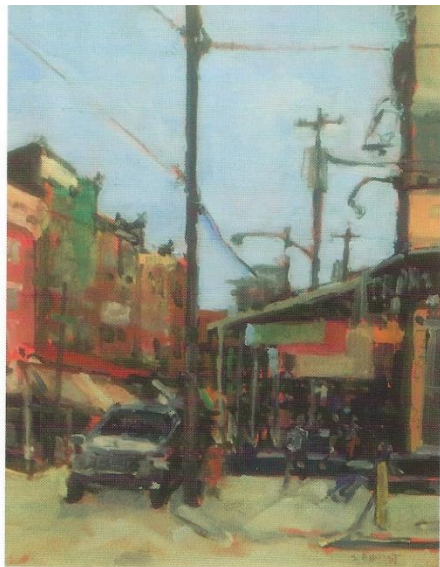
Opportunities/Notices

Nature's Daughters: Solo exhibition and networking



Fields of Gold, oil and silver leaf on panel
11X14

Enjoy original artwork and creative networking at this unique event. See **Jessica Libor's** new pieces in her solo exhibition "Nature's Daughters," on view for one night only at the Da Vinci Art Alliance on Wednesday, September 4th from 5-8pm. Celebrate women with Jessica's art and also with networking expert Jennifer Lynn Robinson. Men are also welcome to attend! See full details at www.jessicalibor.com.



Italian Market Sarah Baptist 11 x 14

Sarah Baptist Open Studio

www.SarahBaptistArt.com

Saturday Sept 21 2 - 8pm

Sunday Sept 22 2 - 5pm

Open Studio Location

7 Orchard Lane
Wilmington, DE 19809

Open Studio Hours

Saturday 9/21 2 - 8 PM
Sunday 9/22 2 - 5 PM

Appointments also available

Direct questions to:
SBaptistArt@gmail.com
or
302-383-2477

Gallery hours: Wednesday, Friday, Saturday, Sunday: 1 PM to 5 PM

September 2019


Opportunities/Notices

THE WAGNER FREE
INSTITUTE OF SCIENCE

Sip and Sketch in the Garden

with artist Rebecca Gilbert


September 12
5:30-7:30 p.m.



"Happy Place"
by Rebecca Gilbert

Gather in the Wagner's garden for guided drawing with artist and printmaker Rebecca Gilbert. After a lesson on historical botanical illustration and technique, your drawing will be supported by Rebecca's expertise and a Liberty gin cocktail. \$25, \$15 for Wagner members, includes one cocktail and basic drawing materials.

wagnerfreeinstitute.org | 215-763-6529 x24
1700 W. Montgomery Ave, Philadelphia, 19121



Membership

Not a PSC Member?: Join Now!

If you're reading this edition of the Portfolio and you're not a member of the PSC, you should consider joining the more than 200 other Philadelphia area artists who have. The PSC is one of the most active visual art venues serving center city Philadelphia. The PSC is a hands-on organization that offers its members the opportunity to participate in all aspects of creating and presenting work to the public. It presents over 20 scheduled group and solo exhibitions annually and offers a wide range of daily workshops. [Get info and an application here.](#)

If you are a member of the PSC, please feel free to share the Portfolio with your artist friends and encourage them to become members.

Membership Renewal

You can check the status of your membership by going to the Current Members page on the PSC web-site: <http://sketchclub.org/sample-page/memberspace/>. All current members are listed. An asterisk (*) means that the membership has expired but is within the 60-day grace period for renewal. Names in red are active links to the individual's web site.

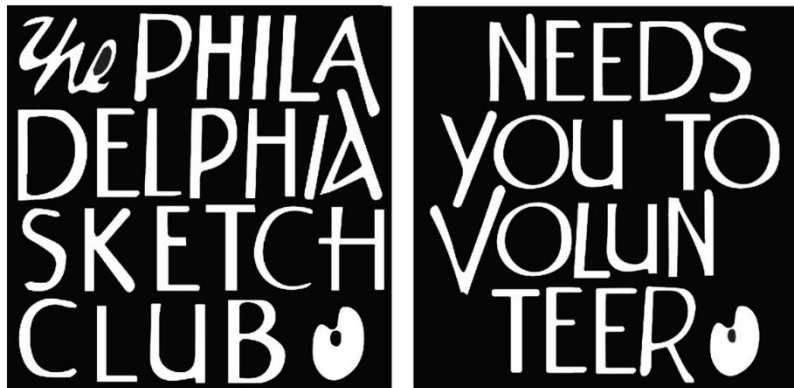
Renew Now! <http://sketchclub.org/annual-dues-payment/>

If you have any questions about your membership, please don't hesitate to contact us at membership@sketchclub.org or call the office: 215-545-9298.

Volunteer

Be an Active Sketc Club Member; Volunteer!!

The Philadelphia Sketch Club is managed entirely by volunteers except for the gallery manager, housekeeping, and bookkeeper.



The PSC always needs volunteer members. Volunteering is one of the most important aspects of being a Sketch Club member and it is the one of the best ways to take advantage of the PSC. You'll be working with colleagues who share the same interests and helping the PSC provide unique services to the visual arts community. Sign up for an activity today.

Here are some of the activities that volunteers perform:

- Chair exhibitions
- Assist in hanging exhibitions
- Covering exhibition drop-offs and pick-ups
- Monitor workshops
- Assist with presentations
- Serve on the Board of Directors
- Serve as Key Circle volunteers
- Publish the Portfolio
- Manage the PSC web site
- Gallery coverage
- Graphics for Portfolio, PSC web site, social media
- Assist in every aspect of managing the club and providing member services

To get involved, contact:

Jackie Barnett

Volunteer Coordinator

Philadelphia Sketch Club

jbarnett12@verizon.net

Gallery hours: Wednesday, Friday, Saturday, Sunday: 1 PM to 5 PM

September 2019

Support the Sketch Club

Contribute

Please consider making your tax-deductible contribution now. These funds will be put to good use providing enhanced services to our members and friends.

Membership dues cover only a small portion of the PSC's operating expenses. Competition for funding for arts organizations like the Sketch Club is increasingly competitive and total funding for the arts is shrinking. Your additional support will keep the PSC an active support for visual artists in the Metropolitan Philadelphia area. The Philadelphia Sketch Club is an IRS designated 501(c) (3) non-profit organization.

You can call the office at 215-545-9298, mail checks to the Sketch Club or visit the Contribute page of our Website.

Visit our **Contribute** page of our website to give online at:

<http://sketchclub.org/support-us/>

You can also support the PSC on an ongoing basis when you shop on Amazon. Go to:

<http://smile.amazon.com/> and enter the Philadelphia Sketch Club in the Pick your own charitable organization box.

Your support makes it possible for the PSC to continue providing ongoing daily workshops and numerous annual gallery exhibitions.



Sketch Club Members receive a
25% discount at Merion Art.
Use promo code "PSC"
online at www.merionart.com

"Our staff of experienced artists, custom framers, and designers can answer your art materials questions and help to creatively solve all your artistic problems. Stop in our store for personalized friendly attention, or go to merionart.com for access to thousands of quality art products!"

Monday - Friday: 8:30am - 6:00pm
Saturday: 9:00am - 5:30pm
Sunday: 12:00pm - 5:00pm

Merion Art & Repro Center
17 West Lancaster Avenue
Ardmore, PA 19003

(610) 896-6161 - Phone
(610) 896-7781 - Fax

Gallery hours: Wednesday, Friday, Saturday, Sunday: 1 PM to 5 PM

September 2019

Support the Sketch Club

PHOTOLounge

The PHOTOLounge supports the Philadelphia Sketch Club and its members:

Sketch Club Members receive a 15% discount at PHOTOLounge.

Use online promo code "sketch".

The PHOTOLounge is located at 1909 Chestnut St. Philadelphia PA 19103.

For nearly 20 years, PHOTOLounge's focus has been the simple idea that pictures should be beautiful, affordable, and long lasting. We're a very adept photo lab with diverse services from iPhone printing to shoebox scanning. You can bring us film for processing, and also order prints online, or from the App. Come in and print your world.

Sketch Club Members receive a 15% discount at PHOTOLounge.

Use online promo code "sketch".

267-322-6651 – www.myphotolounge.com

Sketch Club members receive 20% discount



Framing Family Treasures for over 20 Years



We offer a variety of framing materials and techniques including:

- Archival / conservation treatment • Specialty mats (Linen, Suede, Silk)
- Stretching / Blocking of needleart and oils
- 1000's of moulding choices • 22 karat finished corner frames • Memorabilia framing
- Custom toning / coloring • Decorative mat cuts • French matting • Fillets
- Mirrors • Shadowboxing • Dry Mounting

www.CanalFrame.com • CanalFrame@comcast.net • 215-493-3660

1093 General Greene Road, Washington Crossing, PA 18977

Gallery hours: Wednesday, Friday, Saturday, Sunday: 1 PM to 5 PM

September 2019

Support the Sketch Club

Like, Link & Share

If you're not following the Philadelphia Sketch Club on Facebook re-tweeting Sketch Club tweets yet, it's time that you did. We have well over 2000 Facebook followers. Get the word out about the Sketch Club. Please click the like button and share your comments and invite your friends to like our page.

Follow @PhilaSketchClub on Twitter, we have almost 400 followers. Please click the heart button and re-tweet our announcements.

Include links on your website, blogs and social media to The Philadelphia Sketch Club to increase traction across social media platforms.

Follow us on Facebook, Twitter and Instagram now!

Thanks to Don Brewer and Michelle Lockamy for managing PSC social media sites.



Member Classifieds

Seeking Framers

Sketch Club members frequently ask about framing services. If you wish to provide framing services to PSC members, please contact the PSC at info@sketchclub.org or call the PSC office: 215 545-92908



Gallery hours: Wednesday, Friday, Saturday, Sunday: 1 PM to 5 PM

September 2019

The Portfolio: The newsletter of the Philadelphia Sketch Club is published monthly. Editor, technical support and webmaster: Ken Weiner. Send your member news, announcements and corrections to portfolio@sketchclub.org. The due date for all materials is one week before the end of the month.

Back issues of the Portfolio are available at: <http://sketchclub.org/portfolio-archive/>

Thanks to PSC member volunteer **Ken Weiner** for his ongoing support of Sketch Club technology and communications functions.

The Philadelphia Sketch Club

235 S Camac Street
Philadelphia, PA 19107
(215) 545-9298
<http://sketchclub.org/>
executivedirector@sketchclub.org

Gallery Manager: Michelle Lockamy

Officers:

- President: Richard Harrington
- Vice President: Kenneth Weiner
- Secretary: Elise Anzini
- Treasurer: William Patterson

Board of Directors

- Jacqueline Barnett
- Renard Edwards
- Stephen Iwanczuk
- Edward Pluciennik
- Charles F. Tarr
- Gail Williams