

Gallery hours: Wednesday, Friday, Saturday, Sunday: 1 PM to 5 PM

October 2019



Image by Marilee Morris

The Portfolio is the monthly newsletter of the Philadelphia Sketch Club, America's oldest artist club, founded in 1860. There's always something going on at the PSC. To see the full range of ongoing artistic and educational activities available throughout the month and beyond, visit our web-site at: [sketchclub.org](http://sketchclub.org)

## This Month's Portfolio

Special October Event	2
Main Gallery Schedule	3
Stewart Gallery Schedule	5
Sketch Club Activities	6
Sketch Club Open Workshop Schedule	17
Opportunities/Notices	18
Membership	21
Volunteer	22
Support the Sketch Club	23
Member Classifieds	25

Send your member news, announcements and corrections to [portfolio@sketchclub.org](mailto:portfolio@sketchclub.org). The deadline for ALL submissions is 1-week before the end of the month.

Reminder: It's never too late. You can always renew your membership

You may pay online at <http://sketchclub.org/annual-dues-payment/>

or mail your check to:

The Philadelphia Sketch Club

235 S. Camac St.

Philadelphia, PA 19107

For questions please contact the Gallery Manager at 213335-545-9298 or email:

[executivedirector@sketchclub.org](mailto:executivedirector@sketchclub.org)

Late Breaking News – See items that were submitted after the publication date. Go to:

[info@sketchclub.org](mailto:info@sketchclub.org)

The PSC general email is: [info@sketchclub.org](mailto:info@sketchclub.org)

Gallery hours: Wednesday, Friday, Saturday, Sunday: 1 PM to 5 PM

October 2019

## Special October Event

A COSTUME PARTY AT THE PHILADELPHIA SKETCH CLUB



Image by Marilee Morris

# NIGHTMARE ON CAMAC

**OCTOBER 27 4 - 8 PM**

Beer & Wine • Hors d'oeuvres • Live Band • Dancing  
ARTISTIC COSTUME CONTEST has a Special Prize

\$25 PER PERSON • Please RSVP by Friday, OCT 25:  
[executivedirector@sketchclub.org](mailto:executivedirector@sketchclub.org) or call 215.545.9298



Gallery hours: Wednesday, Friday, Saturday, Sunday: 1 PM to 5 PM

October 2019

## Main Gallery Schedule

[See the 2019 Exhibition Schedule](#)  
[Important Dates for all PSC Activities](#)

### October 1 – 31: The Annual Members Art Exhibition



Reception: October 13th from 2 - 4pm

Gallery hours: Wednesday, Friday, Saturday, Sunday: 1 PM to 5 PM

October 2019

## Main Gallery Schedule

Coming: November 4 – 27: Phillustration



### Phillustration 11 at the PSC

The eleventh annual open juried exhibition of illustration will be held at the PSC between November 4th through the 27th 2019.

Phillustration is the only open juried exhibition of illustration on the East Coast, and the only exhibitions of illustration that hangs professional work along with student entries. Phillustration 11 is accepting entries through Midnight October 20th. The prospectus for entry is available at [www.sketchclub.org](http://www.sketchclub.org).

Whether you're a professional or amateur illustrator, we welcome all entries! If you know an illustrator or illustration student who may be interested, please let them know about this exhibition- it has grown tremendously since 2007. We take pride in having an exhibition for illustration that accepts a wide range of work, from children's book and medical illustrations to New Yorker cartoons and fantasy illustrations.

The Opening Reception is Sunday, November 10th from 2 to 4 PM at the Club. This exhibition offers collectors a great opportunity to purchase original illustration work that is rarely exhibited or offered for sale.

The juror is Jamar Nicholas, a multiple award winning cartoonist and graphic novel illustrator.

Reception: November 10 from 2 – 4 PM

[Get the Prospectus](http://www.sketchclub.org)

Gallery hours: Wednesday, Friday, Saturday, Sunday: 1 PM to 5 PM

October 2019

## Stewart Gallery Schedule

**The Stewart Gallery: October - To be Determined**



**Exhibition space in the Stewart Gallery is available for PSC Members!**

Reserve the gallery by contacting our Exhibition Coordinator:  
[exhibitions@sketchclub.org](mailto:exhibitions@sketchclub.org)

The space is \$150 for a month. Members can show once in the Stewart Gallery per year.

[See the 2019 Exhibition Schedule](#)  
[Important Dates for all PSC Activities](#)



## Sketch Club Activities

### Coming in November 8, 2019 Dinner Meeting

Guest Presenter: Lorraine Glessner – Cold Wax and Encaustic Techniques

Plan to attend this facinating and informative pre-dinner mini-workshop

Plan to attend this special Sketch Club Workshop/Dinner [RSVP Here!](#)

#### Biography

*Lorraine Glessner's paintings are composed of multiple layers of images, the paintings resolving into subtly flickering worlds of extremely seductive richness. Some of them resemble images seen through a microscope; others hint at the world seen from far above. -Andrea Kirsh, Philadelphia Introductions*



24 Robbins Avenue Jenkintown, PA  
19046

lorraineglessnerstudio@gmail.com  
lorraineglessner.net  
267-566-7027

Lorraine Glessner's love of surface, pattern, mark making, image and landscape has led her to combine

disparate materials and processes such as silk, wood, wax, pyrography, rust, paper and more in her work. Lorraine is a former Assistant Professor at Tyler School of Art, Temple University, artist mentor, workshop instructor and an award-winning artist. She holds an MFA from Tyler School of Art, Temple University, a BS from Philadelphia University, and an AAS in Computer Graphics from Moore College of Art & Design. She has a diverse art background with skills that include painting, sculpture, graphic design, interior design, textile design, photography, digital imaging and much more. Among her most recent professional achievements is a Second-Place award in Sculpture from Art of the State at the State Museum in Harrisburg, PA, a recently completed artist residency at Jentel Foundation and an acquisition by Kelsey-Seybold Cancer Center in Houston, Texas. Lorraine's work is included in the recently released *Encaustic Art in the 21st Century* by Ashley Rooney and Nuance, a curated book by artist, Michelle Stuart. Lorraine frequently lectures and participates on academic panels at various Conferences including The International Encaustic Conference, SECAC and The College Art Association Annual Conference. Her work is exhibited locally and nationally in galleries, museums, craft centers, schools, libraries, universities, and more. Like her work, Lorraine brings to her teaching a strong interdisciplinary approach, mixed with a balance of concept, process, history, experimentation, problem solving and discovery.

See Lorraine's Work: <https://www.lorraineglessner.net/>

Gallery hours: Wednesday, Friday, Saturday, Sunday: 1 PM to 5 PM

October 2019

## Sketch Club Activities

### Critique Night – October 16th, 2019 from 7:00 – 9:00 PM

Open to PSC Members and Non-Members

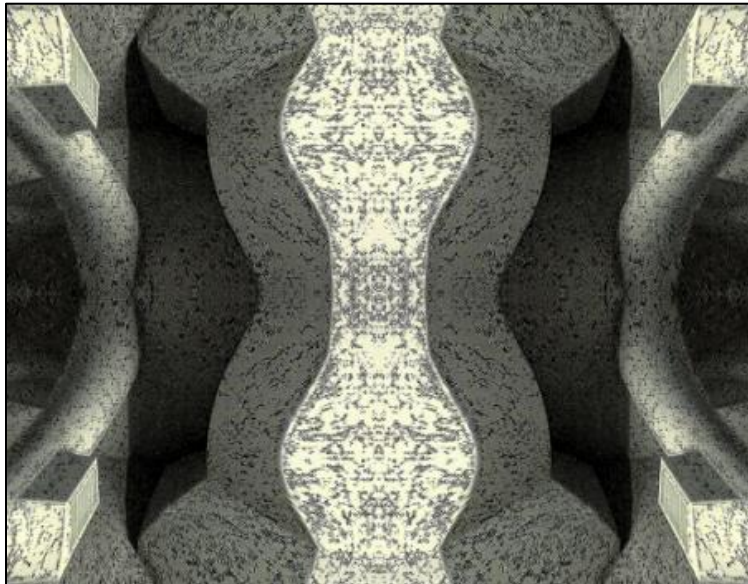
RSVP to Michelle Lockamy at 215-545-9298 or  
[executivedirector@sketchclub.org](mailto:executivedirector@sketchclub.org)

Critique Night is held in the Library of the Sketch Club every third Wednesday beginning at 7 PM. Bring work you've finished, work in progress, or just sketches for work you're planning! Photos, digital work, drawings, all mediums are welcome; we can project digital images on a screen for review, so you have the option to show work that may be too big or too heavy to transport to the Club. There is no one individual directing the critique, just your fellow artists and peers. Facilitated/monitored by Rich Harrington, PSC President



Thanks to PSC member volunteer **Rich Harrington** for organizing and monitoring this event

### Photo Circle– October 10th, 2019 from 6:30 to 8:30 PM



We will discuss new group activities and possibilities for expansion. The Photo Circle meets every 2<sup>nd</sup> Thursday at 6:30 PM. You can contact Steve anytime at [stphniwan@gmail.com](mailto:stphniwan@gmail.com) or 215-300-9192 (cell). **Steve Iwanczuk**, Photo Circle Monitor and Member of Philadelphia Sketch Club Board of Directors.

Thanks to PSC member volunteer **Steve Iwanczuk** for organizing and monitoring this event.

Gallery hours: Wednesday, Friday, Saturday, Sunday: 1 PM to 5 PM

October 2019

## Art Natters: Members News

Joseph DeFay



Richard Harrington



# GHOSTS

September 5th thru October 6th 2019

AG ARTISTS' GALLERY

Sketch Club member **Richard Harrington** will have his work featured in "Ghosts", a two-person exhibition with photographer Joseph DeFay at the Artists' Gallery in Lambertville, New Jersey. The exhibition runs from September 5<sup>th</sup> through October 6<sup>th</sup>, 2019. The opening reception will be on September 14<sup>th</sup>, 4-7 PM, at the gallery located at 18 Bridge Street in Lambertville.

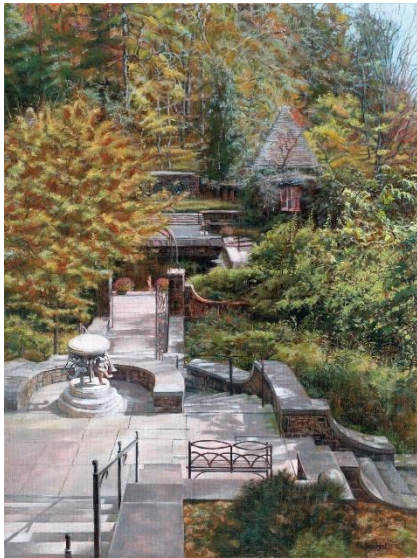


Gallery hours: Wednesday, Friday, Saturday, Sunday: 1 PM to 5 PM

October 2019

## Art Natters: Members News

Sketch Club is not the only venue presenting Member Fall Salons this autumn. Cambridge Art Associations' Salon Memorializing Mary Schein includes Sketch Club Member **Brenda L Bechtel's** Charcoal & Conte "VanVleck's Wisteria Courtyard". This exhibit, on view through September 25th is installed in two Galleries; University Place Gallery in Harvard Square (includes Brenda's piece) and Kathryn Schultz Gallery.

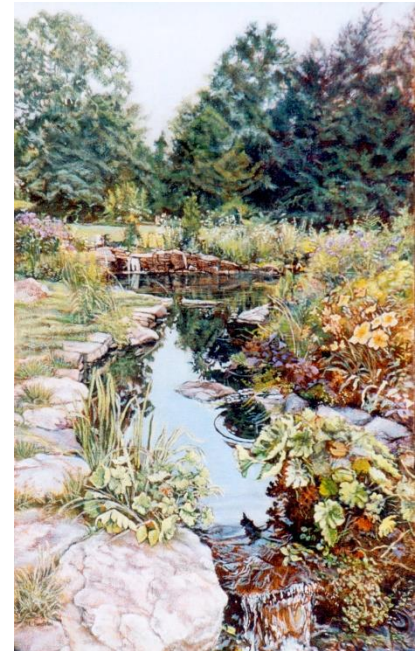


Tea with H.F. at Three - Winterthur

Zullo Gallery in Medfield Massachusetts hosted a celebratory party September 21 honoring Artists whose creations were included by Juror Jacob Ginga in the 24th Annual National Exhibition, on view through November 2. "Tea with H.F. at Three ~ Winterthur" is one of the paintings gracing the wall.

2nd Place Award has been given by Barney Levitt for "Ladybug Picnic" Oil on Linen in Cape Cod Art Center's National Juried Exhibit online at <http://www.capecodartcenter.org/interpretation/>

Plymouth Center for the Arts, 52nd Annual National Juried Exhibition and Festival includes "Blue Skies Smiling at Me" Oil on Linen. An opening Gala and Awards Ceremony took place September 21. This exhibit continues through November 2.



Ladybug Picnic Chanticleer

The Masonic Temple Library & Museum of Philadelphia presents an International Juried Exhibition themed "Embodying Masonic Values" and includes "Masonic Temple ~ Philadelphia" Oil on Linen. The Grand Exhibition Gala takes place October 4th, 6 pm. This Exhibit, as well as, All the rooms in the Temple, is open to the public through October 31. to learn more, please visit:

<http://www.BrendaL.Bechteler.com>



Sandy Neck Daybreak

Gallery hours: Wednesday, Friday, Saturday, Sunday: 1 PM to 5 PM

October 2019

## Art Natters: Members News

Sketch Club member **Aida Birritteri's** watercolor and gouache work, "Spring Showers, Washington Square NYC" was accepted into the Garden State Watercolor Society Juried Exhibition, "On the Road to 50," held at AOY:

Artists of Yardley (AOY)

949 Mirror Lake Rd.

Yardley PA, 19067

Exhibit Dates: October 4th - November 3rd 2019

Reception: October 4th 5:30pm - 7:30pm

PLEIN AIR WATERCOLOR WORKSHOP  
WITH AIDA BIRRITTERI

Saturday, October 5, 2019 10am - 2pm

Rain date: Sunday, October 6th 10am - 2pm

Artist of Yardley

949 Mirror Lake Road

Yardley, PA 19067

Open to all levels, beginners to advanced



Spring Showers, Washington Square NYC



"Tranquility" en plein air watercolor 16 x 20

Paint with plein air artist Aida Birritteri at the historic Janney House on the Patterson Farm in Yardley PA located in the heart of Bucks County. The panoramic views of the surrounding farmland are sure to offer inspiration and excitement. Aida will demo en plein air and participants will then proceed to create a watercolor of their own. She will be there to help along the way.

Limited to 10 participants

\$20. - Members Garden State Watercolor Society (GSWS)

\$40. - Non-Members (includes a 1st year membership to GSWS) "Tranquility" en plein air watercolor 16 x 20

[www.gswcs.org](http://www.gswcs.org)

[www.artistsofyardley.org](http://www.artistsofyardley.org)

[www.aidawatercolors.com](http://www.aidawatercolors.com)



Gallery hours: Wednesday, Friday, Saturday, Sunday: 1 PM to 5 PM

October 2019

## Art Natters: Members News

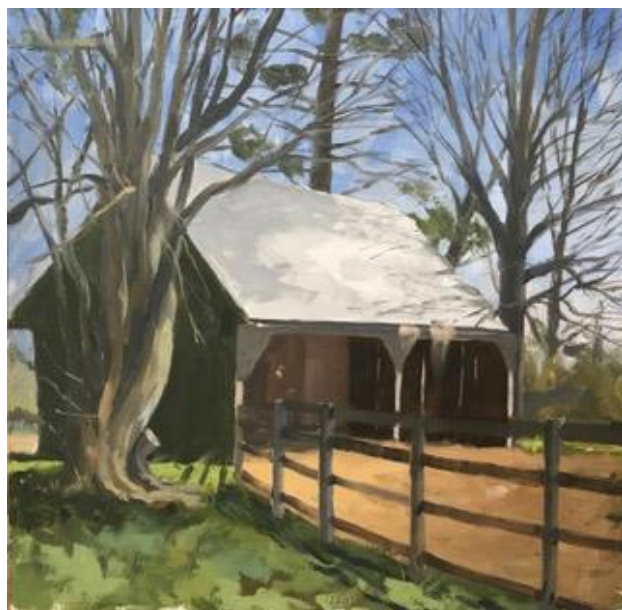
Join painter and Sketch Club member **Rob Finn** for an En Plein Air Watercolor Workshop. Be inspired by the picturesque scenes on the farm and learn about various watercolor techniques. Rob will give a one-hour demonstration showing principles of depth, layering and wet-on-wet painting techniques. Guests can choose to participate in the demo or choose a site at any time to work on their own pieces. Travel watercolor sets, brushes and paper will be available but guests are encouraged to bring their own materials if they wish. Light refreshments will be provided.

\$20 for adults, \$15 for students

To see more of Rob's work, [follow the link.](#)



Sketch Club member **Edward Bell** will be participating in the POST 2019 to be held at Studio 823 Carpenter St., in the Italian Market, on Saturday and Sunday, 10/12 - 10/13, 12 PM to 6 PM. Other artists participating at this location are: Emily Brett Lukens, Dolores Poacelli and William Lukens. [www.philaopenstudios.org](http://www.philaopenstudios.org)



This year he will be featuring a series of oil landscapes painted in Chadds Ford as part of the Land Art Events fund raiser for the Brandywine Conservancy to be held at Rose Hill Farm on Oct. 26. and watercolors of the Italian Market.

Examples can be found on the web page, [edwardbellfineart.com](http://edwardbellfineart.com).

[www.landartevents.com](http://www.landartevents.com)

Edward Bell:  
[ed@edwardbellfineart.com](mailto:ed@edwardbellfineart.com)



Gallery hours: Wednesday, Friday, Saturday, Sunday: 1 PM to 5 PM

October 2019

## Art Natters: Members News

Salem City N J. recently lost its venerated oak tree. The tree succumbed to tide and time when it fell over behind the walls of the Quaker graveyard where it presided for nearly 600 years, In February's snow the tree looked especially aged and vulnerable. At that time Sketch Club member **Sheldon Strober** shot a number of photos. Two of these photos (11" by 17") are included in the Salem Oak Tree exhibit, which will include a variety of art and artifacts. The exhibit will open this fall at the Salem County Historical Society, 83 Market Street, Salem NJ..





## Art Natters: Members News

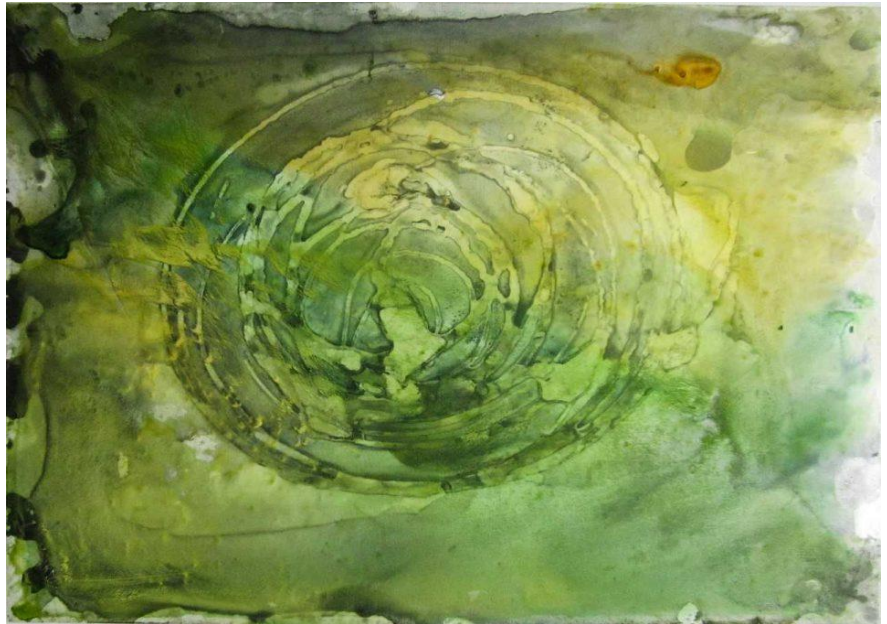
PSC Member **Mary Waltham** has a solo exhibition in her native England from Sept 10->Nov 17<sup>th</sup> at the Gilbert White House and Gardens in Selborne, Hampshire ([https://gilbertwhiteshouse.org.uk/exhibition-pond/?event\\_date=2019-09-10](https://gilbertwhiteshouse.org.uk/exhibition-pond/?event_date=2019-09-10)).

Pond: Mere, Rune and Flint is a direct response to the quiet beauty and mystery of the ancient ponds in Hampshire. It includes paintings, drawings and photographs documenting a site-specific installation.

Ponds are a common feature of the landscape, and in early human settlements they were a shared water resource for humans and animals. On areas of common land used for grazing livestock, ponds were essential. Ponds are not connected to each other or to other water bodies; they are only fed by rainwater or groundwater.

The rich and complex ecosystem that relies on each small pond became especially threatened during the summer of 2018 when there was a drought in Southern England.

One Saxon era pond – Wood Pond on Selborne Common, Hampshire, England - virtually dried up. In exploring what Saxon farmers in Selborne might have done in response to drought, Mary asks what action do we in the twenty-first century have in our power to do in the face of drought, flood and our changing climate?



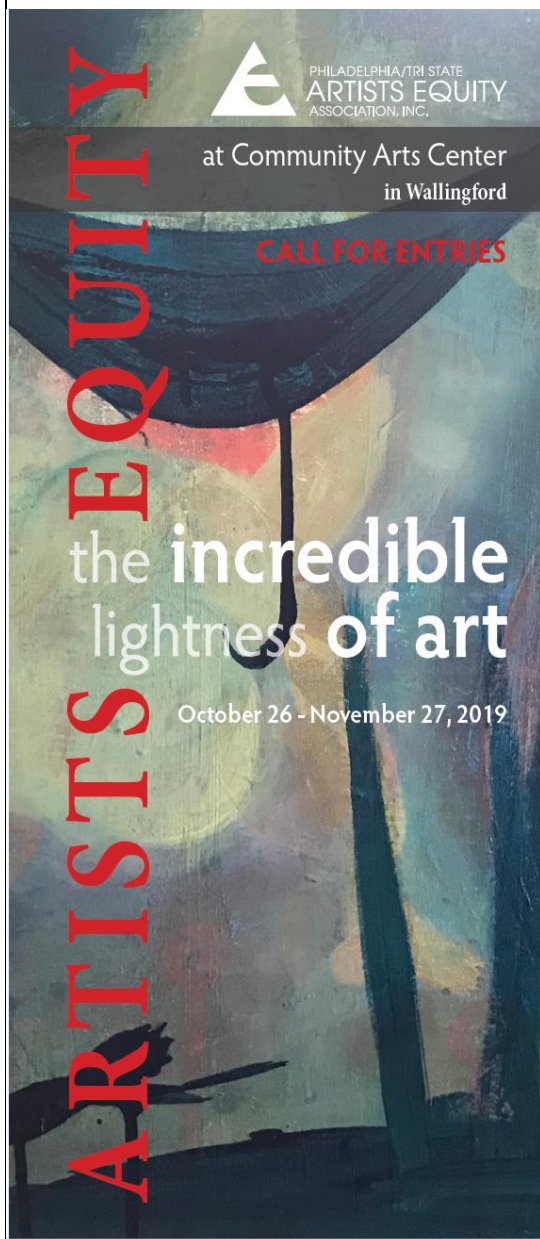
Pond: Mere, Rune and Flint

Gallery hours: Wednesday, Friday, Saturday, Sunday: 1 PM to 5 PM

October 2019

## Art Natters: Members News

From PSC member, **Barbara Dirnbach**



Announcement from Philadelphia / Tri-State Artists Equity

Reminder: Our Fall Juried Members Show, *The Incredible Lightness of Art*, at the Community Arts Center in Wallingford will be held in November 2019. Jurying will be done at delivery by PAFA instructor Michael Gallagher who will jury in person at the center. The Center is located at 414 Plush Mill Rd, Wallingford, PA 19086. - handy on-site parking available Map Here: <http://bit.ly/2KCDtrz>

Our shows are always great opportunities for area artists too display their work and for art lovers & collectors to experience a wide variety of genres.

Mark your calendars for delivery on October 21, 2019, 1 - 6 pm; the opening reception will be Sunday, November 3rd, 2 to 4 pm.

LATEST DUES INFO: JOIN NOW FOR \$35 — HALF-YEAR AE MEMBERSHIP SPECIAL, July 1 – December 31, 2019. You can join at our website. <http://www.artistsequity.org/>

Other than the cost of joining there is no fee to enter the show.

### CALENDAR

Mon, Oct 21	1 - 6 pm: Deliver up to 2 pieces to Community Art Center Entrants send postcards to network and buyers
Tues, Oct 22	Jury and prize selection by Michael Gallagher
Wed, Oct 23	Notification of NON-ACCEPTANCE ONLY (if you do not hear, you're in)
Sat, Oct 26	9:30 am - 12:30 pm: Critique by juror for first 15 artists 1 - 4 pm: Pick-up work not accepted
Sun, Nov 3	2 - 4 pm Reception and Awards
Tues, Nov 27	2 - 4 pm: Closing Reception 4 - 6 pm: Pick-up all work



Gallery hours: Wednesday, Friday, Saturday, Sunday: 1 PM to 5 PM

October 2019

## Art Natters: Members News

### JOSEPH SWEENEY FINE ART

#### Fall 2019 Class Schedule



Join Joe Sweeney for a plein air painting retreat in beautiful Cape May, New Jersey! Experience small-town hospitality while painting Cape May Point, the Cove with sweeping vistas, Cape May Lighthouse, and Sunset Beach. Class includes tips on choosing a prime location, reading the weather and light at a particular time of day, and setting up a landscape palette. Morning and evening painting times will leave the afternoons free to relax on the beach—the perfect artist's

getaway! Instruction geared towards oil, acrylic, and pastel, but experienced watercolorists are welcome.

Times variable. For more information and recommended accommodations, email [joesweeney5@gmail.com](mailto:joesweeney5@gmail.com).

**Please note: This class meets off-campus in Cape May, NJ.**

\* Use Promo Code **NOFEE2019** to waive the \$1.99 processing fee through September 13.

Materials List: Sweeney PT 605CM \$595 [Sign Up](#)

## Art Natters: Members News

### Joseph Sweeney Fine Art Fall 2019 Class Schedule

#### Painting with Open Acrylics

Oct 3 - Dec 12th, 2019 | Thu for 10 weeks from 9:00 am - 12:00 pm

Samuel M.V. Hamilton Building, Room 610  
128 North Broad Street, Philadelphia, PA 19102

\* Use Promo Code **NOFEE2019** to waive the \$1.99 processing fee through September 13.

Materials List: Sweeney PT 608 EO

**\$410** See more info and: [Sign Up](#)

#### The Pennsylvania Landscape Tradition: New Hope

Oct 2 - Nov 6th, 2019 | Wed for 6 weeks from 10:00 am - 3:00 pm

\* Use Promo Code **NOFEE2019** to waive the \$1.99 processing fee through September 13.

Materials List: Sweeney PT 748EB

**\$395** See more info and [Sign Up](#)

Gallery hours: Wednesday, Friday, Saturday, Sunday: 1 PM to 5 PM

October 2019

## Sketch Club Open Workshop Schedule

All workshops are open to the public. There is no need to register before attending. You do NOT have to be a member of the Philadelphia Sketch Club to participate in the workshops. Our workshops are open to anyone who is interested in drawing, painting or printmaking. All skill levels are welcome. Fees: Model workshops: \$8/session members, \$9/session for non-PSC members; Printmaking workshop: \$10/session; All workshops \$6 for full-time students. Monitored by PSC members.

Life Model	Costumed Model	Printmaking
<p>Mondays – Extended pose (multi-session): 6:30 PM-9:30PM</p> <p>Monitors: Robert Bohne, Vince Docktor, Dan Kuetemeyer</p> <p>Tuesdays – Extended pose: 12:00 PM to 3:00 PM Monitor: Jacqueline Barnett</p> <p>Wednesdays – Extended pose: 6:30 to 9:30 PM Monitor: Vince Docktor</p> <p>Saturdays – Extended pose: 9:30 AM to 12:30 PM Monitor: Vince Docktor</p>	<p>Thursdays</p> <p>Extended pose 12:00 PM to 3:00 PM Monitor: Bob Bohne.</p>	<p>Tuesdays</p> <p>10:00 AM to 2:00 PM Monitor: Elizabeth H. MacDonald</p>

Please Note: Those who use oil paints should bring their own container(s) to remove used solvents. Odorless solvents only.

Thank you to all the PSC members who donate their time and expertise to make these workshops available to PSC members and the Philadelphia art community.



## Opportunities/Notices

As a courtesy to our non-PSC-member friends, in support of the Philadelphia artist community, we publish your notices, etc., free of charge. However, contributions to the PSC are always welcome. And, we will gladly consider your application for membership

[Contribute to the Sketch Club Here](#)   [Apply for PSC Membership Here](#)



The Cosmopolitan Club of Philadelphia

invites you to an exhibition of paintings by

**Margo Tassi**

September 13-October 24, 2019

Opening Reception:

Friday, September 13, 2019 5:00-7:00 PM

Meet the Artist Evening:

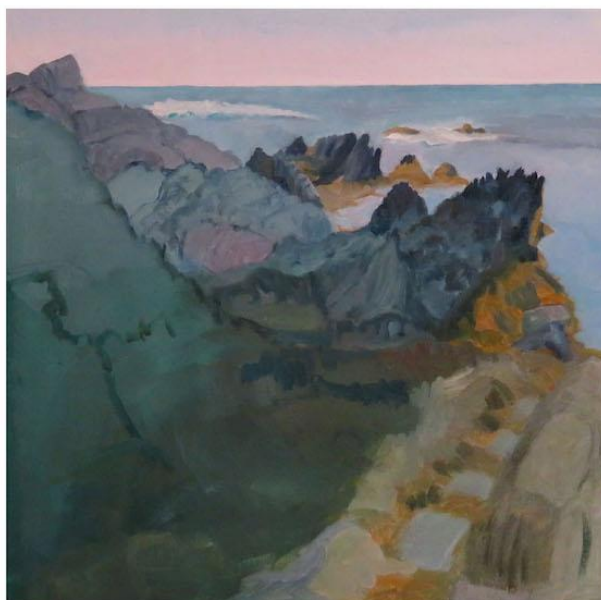
Thursday, October 17, 2019 5:00-7:00 PM

The Club is open Monday through Friday  
10:00-noon and 2:00-4:00 PM

Call Louise Kahana at 215-735-1057 ex. 10  
to confirm or  
for lunch reservations from 12:00-2:00 PM

1616 Latimer St., Philadelphia, PA 19103

[www.cosclub.org](http://www.cosclub.org)  
[reservations@cosclub.org](mailto:reservations@cosclub.org)



"Warm and Cool Rocks" O/C 16"x 16"

Painter, **Margo Tassi** painted "Warm and Cool Rocks" (O/C 16"x 16") at Cape St. Mary, Nova Scotia. It will be shown at the Cosmopolitan Club from September 13th to October 24 with 21 other works by the same artist. The opening reception is September 13, 2019 from 5:00-7:00 PM. The Meet the Artist Evening is October 17, 2019 from 5:00-7:00 PM. Call the Club at 215-735-1057 ex.10 for information about other times to see the show. The Club is at 1616 Latimer St. 19103

Gallery hours: Wednesday, Friday, Saturday, Sunday: 1 PM to 5 PM

October 2019

## Opportunities/Notices

From **Sallie Marshal**: I am happy to say that I have recently begun classes at PAFA's low residency MFA program. I had a fantastic summer, with incredible professors, and access to a sculpture studio of my dreams. I am overjoyed to be part of this program, and I can't wait to begin my fall semester there. A special thanks to all of the following professors: John Grieg Jr, Alexis Granwell, Kevin Richards, Kate Moran, Eileen Neff, Sam Wagner, and all of the extended team who have welcomed me into the program. Each of their unique viewpoints, knowledge of art, and encouragement has taken me into artistic territory that I never imagined possible. Here are five images of my sculptures that I created over the summer.





Gallery hours: Wednesday, Friday, Saturday, Sunday: 1 PM to 5 PM


October 2019

## Opportunities/Notices


**Jan Crooker's** Parallel Lines is up at Northampton Community College with the opening on September 12 6-9. The show features the work of Jan Crooker and Bill Hudders and is up until October 25.

# PARALLEL LINES

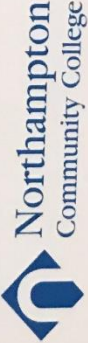
## Jan Crooker William Hudders



*Jan Crooker - "Crossed Shadows"*



*William Hudders - "Fish Bowl"*



Northampton  
Community College



## Membership

### Not a PSC Member?: Join Now!

If you're reading this edition of the Portfolio and you're not a member of the PSC, you should consider joining the more than 200 other Philadelphia area artists who have. The PSC is one of the most active visual art venues serving center city Philadelphia. The PSC is a hands-on organization that offers its members the opportunity to participate in all aspects of creating and presenting work to the public. It presents over 20 scheduled group and solo exhibitions annually and offers a wide range of daily workshops. [Get info and an application here.](#)

If you are a member of the PSC, please feel free to share the Portfolio with your artist friends and encourage them to become members.

### Membership Renewal

You can check the status of your membership by going to the Current Members page on the PSC web-site: <http://sketchclub.org/sample-page/memberspace/>. All current members are listed. An asterisk (\*) means that the membership has expired but is within the 60-day grace period for renewal. Names in red are active links to the individual's web site.

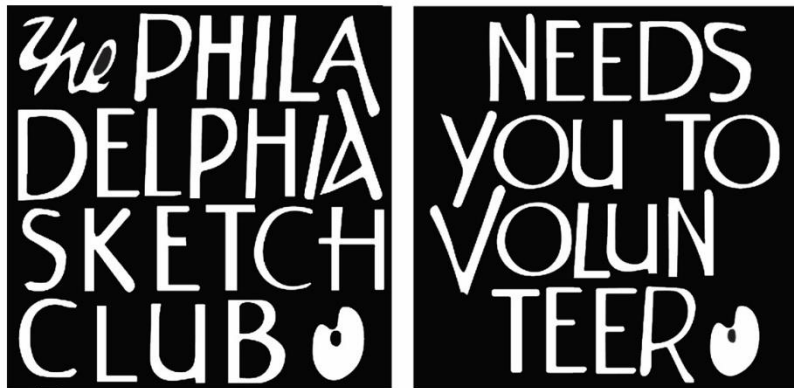
Renew Now! <http://sketchclub.org/annual-dues-payment/>

If you have any questions about your membership, please don't hesitate to contact us at [membership@sketchclub.org](mailto:membership@sketchclub.org) or call the office: 215-545-9298.

## Volunteer

### Be an Active Sketc Club Member; Volunteer!!

The Philadelphia Sketch Club is managed entirely by volunteers except for the gallery manager, housekeeping, and bookkeeper.



The PSC always needs volunteer members. Volunteering is one of the most important aspects of being a Sketch Club member and it is the one of the best ways to take advantage of the PSC. You'll be working with colleagues who share the same interests and helping the PSC provide unique services to the visual arts community. Sign up for an activity today.

Here are some of the activities that volunteers perform:

- Chair exhibitions
- Assist in hanging exhibitions
- Covering exhibition drop-offs and pick-ups
- Monitor workshops
- Assist with presentations
- Serve on the Board of Directors
- Serve as Key Circle volunteers
- Publish the Portfolio
- Manage the PSC web site
- Gallery coverage
- Graphics for Portfolio, PSC web site, social media
- Assist in every aspect of managing the club and providing member services

To get involved, contact:

Jackie Barnett

Volunteer Coordinator

Philadelphia Sketch Club

[jbarnett12@verizon.net](mailto:jbarnett12@verizon.net)

Gallery hours: Wednesday, Friday, Saturday, Sunday: 1 PM to 5 PM

October 2019

## Support the Sketch Club

### Contribute

Please consider making your tax-deductible contribution now. These funds will be put to good use providing enhanced services to our members and friends.

Membership dues cover only a small portion of the PSC's operating expenses. Competition for funding for arts organizations like the Sketch Club is increasingly competitive and total funding for the arts is shrinking. Your additional support will keep the PSC an active support for visual artists in the Metropolitan Philadelphia area. The Philadelphia Sketch Club is an IRS designated 501(c) (3) non-profit organization.

You can call the office at 215-545-9298, mail checks to the Sketch Club or visit the Contribute page of our Website.

Visit our **Contribute** page of our website to give online at:

<http://sketchclub.org/support-us/>

You can also support the PSC on an ongoing basis when you shop on Amazon. Go to:

<http://smile.amazon.com/> and enter the Philadelphia Sketch Club in the Pick your own charitable organization box.

Your support makes it possible for the PSC to continue providing ongoing daily workshops and numerous annual gallery exhibitions.



Sketch Club Members receive a  
25% discount at Merion Art.  
Use promo code "PSC"  
online at [www.merionart.com](http://www.merionart.com)

"Our staff of experienced artists, custom framers, and designers can answer your art materials questions and help to creatively solve all your artistic problems. Stop in our store for personalized friendly attention, or go to [merionart.com](http://merionart.com) for access to thousands of quality art products!"

Monday - Friday: 8:30am - 6:00pm  
Saturday: 9:00am - 5:30pm  
Sunday: 12:00pm - 5:00pm

**Merion Art & Repro Center**  
17 West Lancaster Avenue  
Ardmore, PA 19003

(610) 896-6161 - Phone  
(610) 896-7781 - Fax



Gallery hours: Wednesday, Friday, Saturday, Sunday: 1 PM to 5 PM

October 2019

## Support the Sketch Club

### PHOTOLounge

The PHOTOLounge supports the Philadelphia Sketch Club and its members:

**Sketch Club Members receive a 15% discount at PHOTOLounge.**

**Use online promo code "sketch".**

The PHOTOLounge is located at 1909 Chestnut St. Philadelphia PA 19103.

For nearly 20 years, PHOTOLounge's focus has been the simple idea that pictures should be beautiful, affordable, and long lasting. We're a very adept photo lab with diverse services from iPhone printing to shoebox scanning. You can bring us film for processing, and also order prints online, or from the App. Come in and print your world.

**Sketch Club Members receive a 15% discount at PHOTOLounge.**

**Use online promo code "sketch".**

**267-322-6651 – [www.myphotolounge.com](http://www.myphotolounge.com)**

## Sketch Club members receive 20% discount



Framing Family Treasures for over 20 Years



**We offer a variety of framing materials and techniques including:**

- Archival / conservation treatment • Specialty mats (Linen, Suede, Silk)
- Stretching / Blocking of needleart and oils
- 1000's of moulding choices • 22 karat finished corner frames • Memorabilia framing
- Custom toning / coloring • Decorative mat cuts • French matting • Fillets
- Mirrors • Shadowboxing • Dry Mounting

**[www.CanalFrame.com](http://www.CanalFrame.com) • [CanalFrame@comcast.net](mailto:CanalFrame@comcast.net) • 215-493-3660**

**1093 General Greene Road, Washington Crossing, PA 18977**

Gallery hours: Wednesday, Friday, Saturday, Sunday: 1 PM to 5 PM

October 2019

## Support the Sketch Club

### Like, Link & Share

If you're not following the Philadelphia Sketch Club on Facebook re-tweeting Sketch Club tweets yet, it's time that you did. We have well over 2000 Facebook followers. Get the word out about the Sketch Club. Please click the like button and share your comments and invite your friends to like our page.

Follow @PhilaSketchClub on Twitter, we have almost 400 followers. Please click the heart button and re-tweet our announcements.

Include links on your website, blogs and social media to The Philadelphia Sketch Club to increase traction across social media platforms.

Follow us on Facebook, Twitter and Instagram now!

Thanks to Don Brewer and Michelle Lockamy for managing PSC social media sites.



## Member Classifieds

### Seeking Framers

Sketch Club members frequently ask about framing services. If you wish to provide framing services to PSC members, please contact the PSC at [info@sketchclub.org](mailto:info@sketchclub.org) or call the PSC office: 215 545-92908





Gallery hours: Wednesday, Friday, Saturday, Sunday: 1 PM to 5 PM

October 2019

The Portfolio: The newsletter of the Philadelphia Sketch Club is published monthly. Editor, technical support and webmaster: Ken Weiner. Send your member news, announcements and corrections to [portfolio@sketchclub.org](mailto:portfolio@sketchclub.org). The due date for all materials is one week before the end of the month.

Back issues of the Portfolio are available at: <http://sketchclub.org/portfolio-archive/>

Thanks to PSC member volunteer **Ken Weiner** for his ongoing support of Sketch Club technology and communications functions.

#### **The Philadelphia Sketch Club**

235 S Camac Street  
Philadelphia, PA 19107  
(215) 545-9298  
<http://sketchclub.org/>  
[executivedirector@sketchclub.org](mailto:executivedirector@sketchclub.org)

Gallery Manager: Michelle Lockamy

#### **Officers:**

- President: Richard Harrington
- Vice President: Kenneth Weiner
- Secretary: Elise Anzini
- Treasurer: William Patterson

#### **Board of Directors**

- Jacqueline Barnett
- Renard Edwards
- Stephen Iwanczuk
- Edward Pluciennik
- Charles F. Tarr
- Gail Williams