

Gallery hours: Wednesday, Friday, Saturday, Sunday: 1 PM to 5 PM

November 2019



Image by Brenda Bechtel

The Portfolio is the monthly newsletter of the Philadelphia Sketch Club, America's oldest artist club, founded in 1860. There's always something going on at the PSC. To see the full range of ongoing artistic and educational activities available throughout the month and beyond, visit our web-site at:

[sketchclub.org](http://sketchclub.org). Be a supporter: [Donate Here!](#)

## This Month's Portfolio

|   |    |
|---|----|
| Special Event – Cold Wax and Encaustic Techniques | 2  |
| Main Gallery Schedule                             | 3  |
| Stewart Gallery Schedule                          | 5  |
| Sketch Club Activities                            | 7  |
| Sketch Club Open Workshop Schedule                | 19 |
| Opportunities/Notices                             | 20 |
| Membership  | 20 |
| Volunteer   | 21 |
| Support the Sketch Club                           | 22 |
| Member Classifieds                                | 24 |

Send your member news, announcements and corrections to: [portfolio@sketchclub.org](mailto:portfolio@sketchclub.org). The deadline for ALL submissions is 1-week before the end of the month.

Reminder: It's never too late. You can always renew your membership

You may pay online at <http://sketchclub.org/annual-dues-payment/> or mail your check to:

The Philadelphia Sketch Club  
235 S. Camac St.

Philadelphia, PA 19107

For questions please contact the Gallery Manager at 213335-545-9298 or email:

[executivedirector@sketchclub.org](mailto:executivedirector@sketchclub.org)

Late Breaking News – See items that were submitted after the publication date. Go to:

[info@sketchclub.org](mailto:info@sketchclub.org)

The PSC general email is: [info@sketchclub](mailto:info@sketchclub)

Gallery hours: Wednesday, Friday, Saturday, Sunday: 1 PM to 5 PM

November 2019

## Special Event – Cold Wax and Encaustic Techniques

**November 8, 2019 Dinner Meeting** – See Dinner Meeting in PSC Activities below.

Guest Presenter: Lorraine Glessner – Cold Wax and Encaustic Techniques  
Plan to attend this fascinating and informative pre-dinner mini-workshop

Plan to attend this special Sketch Club Workshop/Dinner [RSVP Here!](#)

### Biography

*Lorraine Glessner's paintings are composed of multiple layers of images, the paintings resolving into subtly flickering worlds of extremely seductive richness. Some of them resemble images seen through a microscope; others hint at the world seen from far above. - Andrea Kirsh, Philadelphia Introductions*



24 Robbins Avenue Jenkintown, PA  
19046

lorraineglessnerstudio@gmail.com  
lorraineglessner.net  
267-566-7027

Lorraine Glessner's love of surface, pattern, mark making, image and landscape has led her to combine disparate materials and processes such as silk, wood, wax, pyrography, rust, paper and more in her work. Lorraine is a former Assistant Professor at Tyler School of Art, Temple University, artist mentor, workshop instructor and an award-winning artist. She holds an MFA from Tyler School of Art, Temple University, a BS from Philadelphia University, and an AAS in Computer Graphics from Moore College of Art & Design. She has a diverse art background with skills that include painting, sculpture, graphic design, interior design, textile design, photography, digital imaging and much more. Among her most recent professional achievements is a Second-Place award in Sculpture from Art of the State at the State Museum in Harrisburg, PA, a recently completed artist residency at Jentel Foundation and an acquisition by Kelsey-Seybold Cancer Center in Houston, Texas. Lorraine's work is included in the recently released Encaustic Art in the 21st Century by Ashley Rooney and Nuance, a curated book by artist, Michelle Stuart. Lorraine frequently lectures and participates on academic panels at various Conferences including The International Encaustic Conference, SECAC and The College Art Association Annual Conference. Her work is exhibited locally and nationally in galleries, museums, craft centers, schools, libraries, universities, and more. Like her work, Lorraine brings to her teaching a strong interdisciplinary approach, mixed with a balance of concept, process, history, experimentation, problem solving and discovery.

See Lorraine's Work: <https://www.lorraineglessner.net/>



Gallery hours: Wednesday, Friday, Saturday, Sunday: 1 PM to 5 PM

November 2019

## Main Gallery Schedule

[See the 2019 Exhibition Schedule](#)  
[Important Dates for all PSC Activities](#)

Phillustration 11,  
November 4 – 27, 2019

Reception: November 10  
from 2 – 4 PM



Gallery hours: Wednesday, Friday, Saturday, Sunday: 1 PM to 5 PM

November 2019

## Main Gallery Schedule

Coming December 1<sup>st</sup> – 26<sup>th</sup>, 2019



ART FOR GIVING

**The  
Legacy  
Show**

& RECEIVING

**Annual Holiday  
Art Show & Sale**

December 5 -19, 2018  
at the Philadelphia Sketch Club

Reception and Sale  
Saturday, December 15, 2018  
*See details at [sketchclub.org](http://sketchclub.org)*

the PHILA  
DELPHIA  
SKETCH  
CLUB

Gallery hours: Wednesday, Friday, Saturday, Sunday: 1 PM to 5 PM

November 2019

## Stewart Gallery Schedule

### Christopher Fowler Solo Show

November 4 – 27

Reception: November 10  
from 2 – 4 PM



Coming December 1<sup>st</sup> – 26<sup>th</sup>, 2019: The Volunteer Art Exhibiton





Gallery hours: Wednesday, Friday, Saturday, Sunday: 1 PM to 5 PM

November 2019

## Stewart Gallery Schedule



**Exhibition space in the Stewart Gallery is available for PSC Members!**

Reserve the gallery by contacting our Exhibition Coordinator:  
exhibitions@sketchclub.org

The space is \$150 for a month. Members can show once in the Stewart Gallery per year.

[See the 2019 Exhibition Schedule](#)  
[Important Dates for all PSC Activities](#)

## Sketch Club Activities

### Dinner Meeting - November 8, 2019

**Dinner and Presentation Open to the Public**

**Please RSVP to Michelle in the PSC office by 12 Noon**

**Wednesday November 6<sup>th</sup>, 2019**

#### AGENDA

- 5:00- Social Period
- 6:00- Speaker: Lorraine Glessner
- 7:30- Light Dinner

#### DINNER

- Members - \$16
- Guests - \$18

[RSVP Here!](#)



### Guest Speaker: Lorraine Glessner

About Lorraine:

*Lorraine Glessner's paintings are composed of multiple layers of images, the paintings resolving into subtly flickering worlds of extremely seductive richness. Some of them resemble images seen through a microscope; others hint at the world seen from far above. -Andrea Kirsh, Philadelphia Introductions*

Lorraine Glessner's love of surface, pattern, mark making, image and landscape has led her to combine disparate materials and processes such as silk, wood, wax, pyrography, rust, paper and more in her work. Lorraine is a former Assistant Professor at Tyler School of Art, Temple University, artist mentor, workshop instructor and an award-winning artist. She holds an MFA from Tyler School of Art, Temple University, a BS from Philadelphia University, and an AAS in Computer Graphics from Moore College of Art & Design. She has a diverse art background with skills that include painting, sculpture, graphic design, interior design, textile design, photography, digital imaging and much more. Among her most recent professional achievements is a Second-Place award in Sculpture from Art of the State at the State Museum in Harrisburg, PA, a recently completed artist residency at Jentel Foundation and an acquisition by Kelsey-Seybold Cancer Center in Houston, Texas. Lorraine's work is included in the recently released *Encaustic Art in the 21st Century* by Ashley Rooney and Nuance, a curated book by artist, Michelle Stuart. Lorraine frequently lectures and participates on academic panels at various Conferences including The International Encaustic Conference, SECAC and The College Art Association Annual Conference. Her work is exhibited locally and nationally in galleries, museums, craft centers, schools, libraries, universities, and more. Like her work, Lorraine brings to her teaching a strong interdisciplinary approach, mixed with a balance of concept, process, history, experimentation, problem solving and discovery.

See Lorraine's Work: <https://www.lorraineglessner.net/>

**Check the PSC website at: [sketchclub.org](http://sketchclub.org) for updates**

Gallery hours: Wednesday, Friday, Saturday, Sunday: 1 PM to 5 PM

November 2019

## Sketch Club Activities

### Critique Night –November 20th, 2019 from 7:00 – 9:00 PM

Open to PSC Members and Non-Members

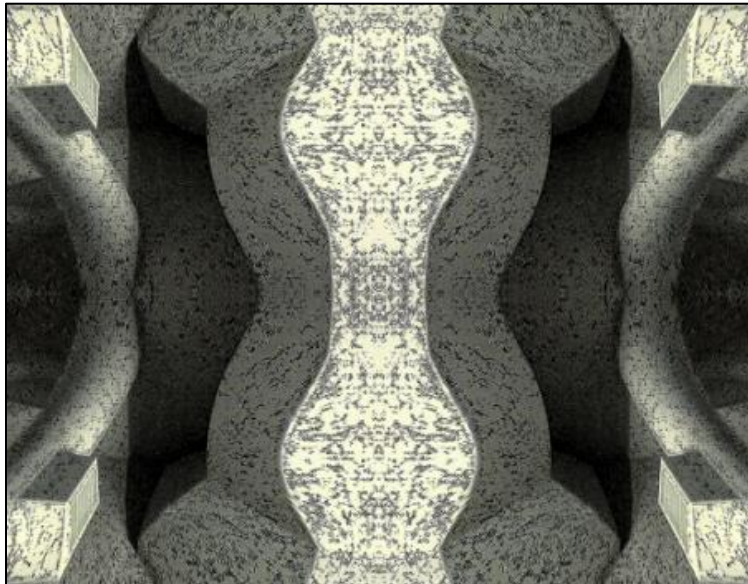
RSVP to Michelle Lockamy at 215-545-9298 or  
[executivedirector@sketchclub.org](mailto:executivedirector@sketchclub.org)

Critique Night is held in the Library of the Sketch Club every third Wednesday beginning at 7 PM. Bring work you've finished, work in progress, or just sketches for work you're planning! Photos, digital work, drawings, all mediums are welcome; we can project digital images on a screen for review, so you have the option to show work that may be too big or too heavy to transport to the Club. There is no one individual directing the critique, just your fellow artists and peers. Facilitated/monitored by Rich Harrington, PSC President



Thanks to PSC member volunteer **Rich Harrington** for organizing and monitoring this event

### Photo Circle–November 14th, 2019 from 6:30 to 8:30 PM



We will discuss new group activities and possibilities for expansion. The Photo Circle meets every 2<sup>nd</sup> Thursday at 6:30 PM. You can contact Steve anytime at [stphniwan@gmail.com](mailto:stphniwan@gmail.com) or 215-300-9192 (cell). **Steve Iwanczuk**, Photo Circle Monitor and Member of Philadelphia Sketch Club Board of Directors.

Thanks to PSC member volunteer **Steve Iwanczuk** for organizing and monitoring this event.



Gallery hours: Wednesday, Friday, Saturday, Sunday: 1 PM to 5 PM

November 2019

## Art Natters: Members News

Sketch Club member **Alice Chung** had work accepted into Wayne Art Center Members' Juried Exhibition 2019 at Davenport Gallery

Exhibition now through Nov 16.  
Reception Oct 20, 2019  
Wayne Art Center Davenport Gallery  
413 Maplewood Ave,  
Wayne PA



Croatia, Acrylic 30x 40

Sketch Club member and monitor **Robert Bohne** will be showing recent oils and works on paper at the Gallery on Park in Swarthmore Pa for the month of November.



"Outer Banks", oil on canvas 24" x 30"

Opening is on first Friday, Nov. 1,  
2019 from 6 pm to 8 pm.  
104 Park Ave. Swarthmore Pa.

Gallery hours: Wednesday, Friday, Saturday, Sunday: 1 PM to 5 PM

November 2019

## Art Natters: Members News

From Sketch Club member, **Barbara Dirnbach**:



### Announcement to Area Art Lovers, & Collectors

#### From: Philadelphia / Tri-State Artists Equity

Artists Equity Fall Members Show, *The Incredible Lightness of Art*, at the Community Arts Center in Wallingford will be held from November 3rd to the 27th. The art show is free to the public. Gallery Hours: Monday - Thur, 10 am ~ 7 pm; Friday, 10 am ~ 3 pm; Saturday: 10 am ~ 2 pm.

The Center is located at 414 Plush Mill Rd, Wallingford PA 19086 - handy on-site parking available. (Map Here: <http://bit.ly/2KCDtrz>)

Our shows are always a great opportunity for area artists to display their work and for art lovers & collectors to experience a wide variety of genres.

The Opening Reception will be Sunday, November 3rd from 2 to 4 pm. The Closing Reception will be on Nov 27th from 2 - 4 pm. The Arts Center phone: (610) 566-1713

<http://www.artistsequity.org/>: Questions? Email us at [info@artistsequity.org](mailto:info@artistsequity.org)

Facebook: <https://www.facebook.com/ArtistsEquityAssociation/>

Philadelphia/Tri-State Artists Equity Association, Inc. PO Box 495 Ardmore, PA 19003



Gallery hours: Wednesday, Friday, Saturday, Sunday: 1 PM to 5 PM

November 2019

## Art Natters: Members News

Join painter and Sketch Club member **Rob Finn** for an En Plein Air Watercolor Workshop. Be inspired by the picturesque scenes on the farm and learn about various watercolor techniques. Rob will give a one-hour demonstration showing principles of depth, layering and wet-on-wet painting techniques. Guests can choose to participate in the demo or choose a site at any time to work on their own pieces. Travel watercolor sets, brushes and paper will be available but guests are encouraged to bring their own materials if they wish. Light refreshments will be provided.

\$20 for adults, \$15 for students

To see more of Rob's work, [follow the link.](#)

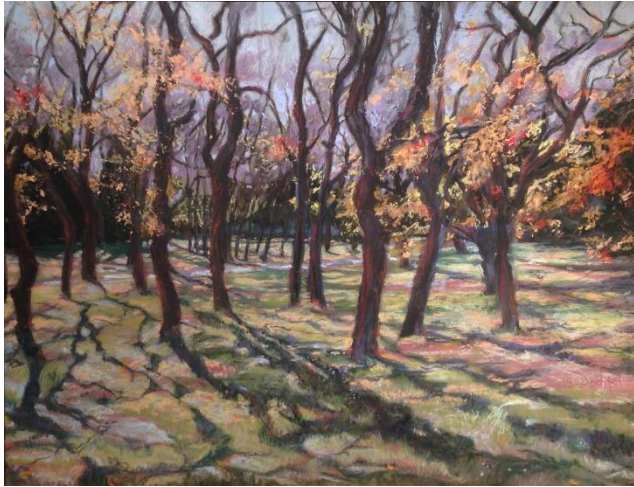




Gallery hours: Wednesday, Friday, Saturday, Sunday: 1 PM to 5 PM

November 2019

Sketch Club Member **Brenda L Bechtel** has Art included in current and upcoming exhibits in the following venues;



**Parker and Plum RI**

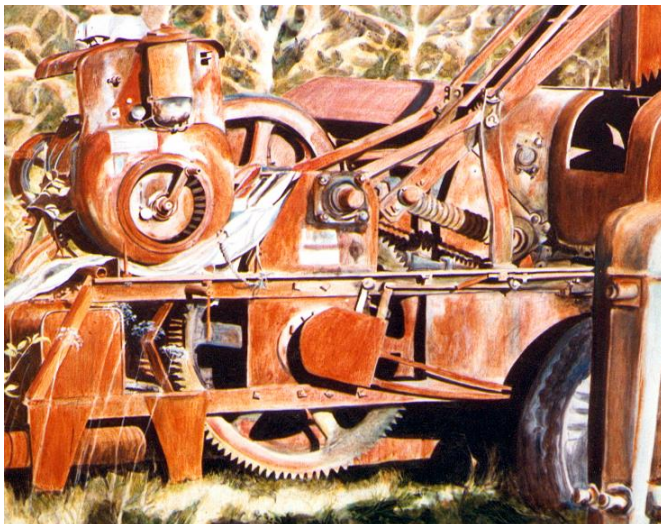
Southern Vermont Art Center "Autumn Angles" Member Juried Exhibition, Yester House Galleries, October 12 - December 1. Judges; Leslie Pell van Breen (Director, Artists Book Foundation, Massachusetts Museum of Contemporary Art, MoCA) and Joshua Farr (Executive Director, VT Center for Photography)

American Artist Professional League 91st Grand National Exhibition at the Salmagundi Club, 47 Fifth Ave, Manhattan, NYC, November 11 - 22, Awards Reception November 17, 1 - 4 pm (Awards Ceremony 2 pm)

New Hampshire Art Association "20th Annual Joan L Dunfey Open Juried Exhibition" Robert Lincoln Levy Gallery, State

Street, Portsmouth, NH, October 30 - December 1. Juror & Judge of Awards Inez McDermott. Awards Reception Friday, November 1, 5 - 8pm, Private Reception for included Artists, Patron Collectors & Media with Guest Speaker Gary Samson, Artist Laureate of NH, November 7, 5:30.

National Arts Club "Catharine Lorillard Wolfe Art Club 123rd Juried Exhibition" Gramercy Park South, Manhattan, NYC, January 7 - 31, 2020, Benefit Reception Supporting the Metropolitan Museum January 17, 5:30 - 8 pm. Awards Dinner January 31, 6 - 9 pm.



**Whimsical Baler of the Mills**



**White Cedar**

To learn more, please visit

<http://www.BrendaLBechtel.com>

Gallery hours: Wednesday, Friday, Saturday, Sunday: 1 PM to 5 PM

November 2019

## Art Natters: Members News

# ALAN FETTERMAN: *The Colors of Home*



Please join us for a weekend of celebration  
of Alan Fetterman's new works  
OPENING RECEPTIONS:

**Saturday, November 16, 2019 4-9pm**

**Sunday, November 17, 2019 1-4pm**

**At The Stone Barn**

**Johnson's Locust Hall Farm**



Stone Barn, 2691 Monmouth Road, Jobstown, NJ

Paintings shown on reverse side (L to R)  
"Point Pleasant," 25x30 oil/linen Madary frame  
"Happy Home," 20x20 oil/linen Madary frame  
"The Crossing," 24x24 oil/linen Madary frame

"In the days, while walking on my way, I see coloration on display." - AF

The Artful Deposit Gallery  
142 Farnsworth Avenue  
Bordentown City, NJ 08505  
609-298-6970  
www.artfuldeposit.com



The Artful Deposit Gallery will  
host an Opening Reception  
on Saturday & Sunday  
November 16th & 17th from  
5 – 9 PM, Saturday & 1-4PM  
on Sunday. Featuring the  
wonderful and elegant  
atmosphere of a refined and

pristine all stone barn on over 100 bucolic acres. Refreshments and the opportunity to meet the Artist are at hand. This is an exquisite location and a chance to meet one the region's most collected and recognized artists.

The exhibition "Colors of Home" highlights Alan's extraordinary ability to forge the value of the human spirit into color and form. Alan's ability to capture emotion and atmosphere is paramount and he has been showcased in the last 30 years with more than 45 one-person shows, and dozens of magazine articles, books and interviews.

Alan Fetterman is a lifelong resident of Bucks County and is recognized on a national platform as one of the great masters of neo-Impressionism. He is a Kay Scholar In Philosophy from The University of Pennsylvania, and brings global travel, higher education and the vast reality of being grounded in the humanities. By proclamation he is Bucks County's first Artist-in-Residence. He is also the recipient of the Medal of Honor by the oldest art club in America: The Philadelphia Sketch Club, and he has garnered numerous art and lifetime achievement awards throughout his life and work. His art is held in private collections throughout the nation... as well as public locations such as The University of Pennsylvania, The Gettysburg College, Bucks County Community College, The Bucks County Justice Center, and the President Eisenhower house, Gettysburg, Pennsylvania. He is noted on Wikipedia and Who's Who in America.



Gallery hours: Wednesday, Friday, Saturday, Sunday: 1 PM to 5 PM

November 2019

## Art Natters: Members News

Thanks to the ArtList and Jerry's Artarama for awarding Sketch Club member **Su Horthy's** painting, Color Pops 26 (Sold), 3rd Place for the month of September. This is the second national award for Color Pops 26, this year.

Thank you also, to Michael Gallagher, juror, for accepting her painting, Color Pops 17, into the Artists Equity exhibition, the incredible lightness of art. The exhibition will hang from October 26 – November 27, 2019. Opening reception will be Sunday, November 3, 2019, 2:00 – 4:00pm. Closing reception will be held on Tuesday, November 26th, 2:00 – 4:00pm.



Color Pops 17, Oil on canvas, 24"X24"



Color Pops 26, Oil on canvas, 24"X24"



## Art Natters: Members News

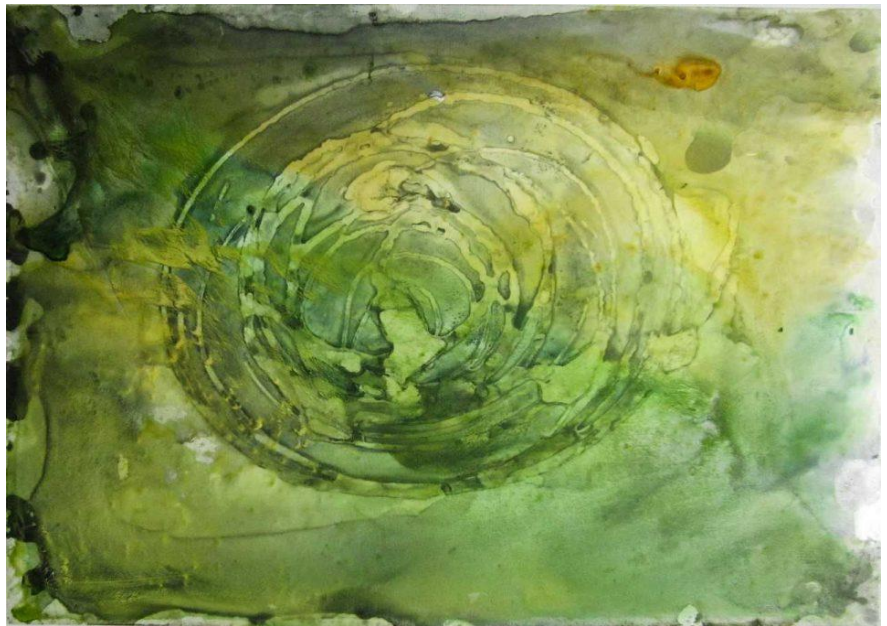
PSC Member **Mary Waltham** has a solo exhibition in her native England from Sept 10->Nov 17<sup>th</sup> at the Gilbert White House and Gardens in Selborne, Hampshire ([https://gilbertwhiteshouse.org.uk/exhibition-pond/?event\\_date=2019-09-10](https://gilbertwhiteshouse.org.uk/exhibition-pond/?event_date=2019-09-10)).

Pond: Mere, Rune and Flint is a direct response to the quiet beauty and mystery of the ancient ponds in Hampshire. It includes paintings, drawings and photographs documenting a site-specific installation.

Ponds are a common feature of the landscape, and in early human settlements they were a shared water resource for humans and animals. On areas of common land used for grazing livestock, ponds were essential. Ponds are not connected to each other or to other water bodies; they are only fed by rainwater or groundwater.

The rich and complex ecosystem that relies on each small pond became especially threatened during the summer of 2018 when there was a drought in Southern England.

One Saxon era pond – Wood Pond on Selborne Common, Hampshire, England - virtually dried up. In exploring what Saxon farmers in Selborne might have done in response to drought, Mary asks what action do we in the twenty-first century have in our power to do in the face of drought, flood and our changing climate?



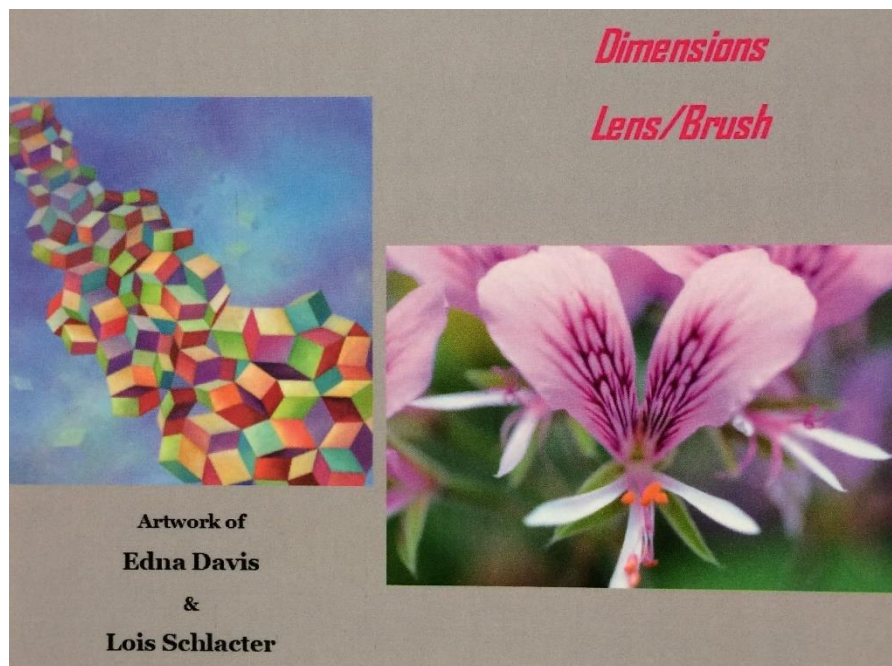
Pond: Mere, Rune and Flint

Gallery hours: Wednesday, Friday, Saturday, Sunday: 1 PM to 5 PM

November 2019

## Art Natters: Members News

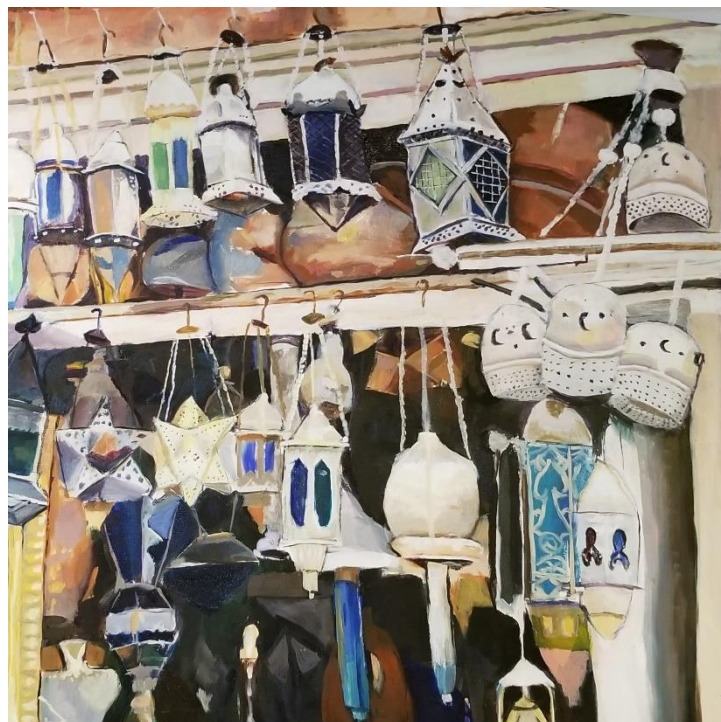
Sketch Club member Lois Schlachter will be exhibiting along with photographer, Edna Davis at the Rydal Park Gallery,



November 2nd thru December 2019.  
Opening Reception, Saturday November  
2nd, 1:30 - 3:00, 1515 The

Fairway, Rydal, PA 19046. Gallery open  
daily 9:00 am - 9:00 pm.

Sketch Club member **Tracey Landmann** is exhibiting fifteen paintings in "Paint the Light Fantastic" at Gallery 919, on the first floor of the Citizens Financial Center, at 919 N. Market St., Wilmington Delaware. The opening reception is on Friday, Nov. 1, from 5-8. The paintings will be on display throughout the month.



**Light Fantastic**



Gallery hours: Wednesday, Friday, Saturday, Sunday: 1 PM to 5 PM

November 2019

## Art Natters: Members News

From 6th-28th December, Gross McCleaf Gallery will present Sketch Club member **Patrick Connors** solo exhibit, "A Place Apart." The show will be comprised of thirty oils, 9 x 12 inches, which depict Laurel Hill Cemetery throughout four seasons. The opening is scheduled for 6th December, Friday evening, 5-7PM.

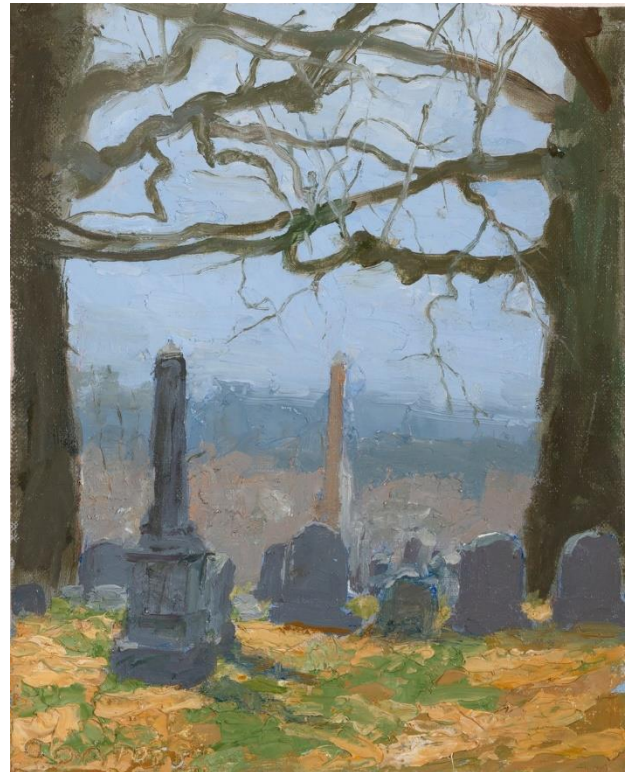
This exhibition was made possible by generous support from the Independence Foundation.

I hope you can see my show and I look forward to those of you who can make the opening.

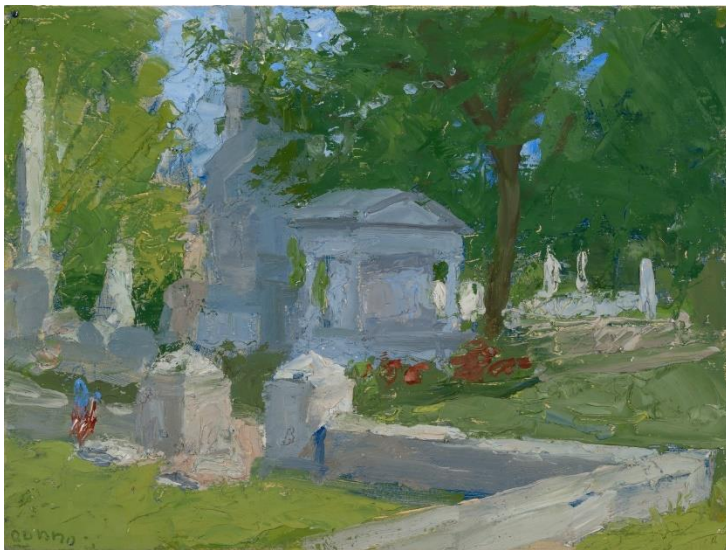
Gross McCleaf Gallery, 127 S. 16th Street, 2nd floor, Philadelphia, PA, 19102, telephone: 215-665-8138.

The artwork will be available for online viewing starting 6th December:

<http://www.grossmccleaf.com/currentexhibition.html>



Early Spring Afternoon Vista between two Trees



Memorial Day Morning



Afternoon Autumn

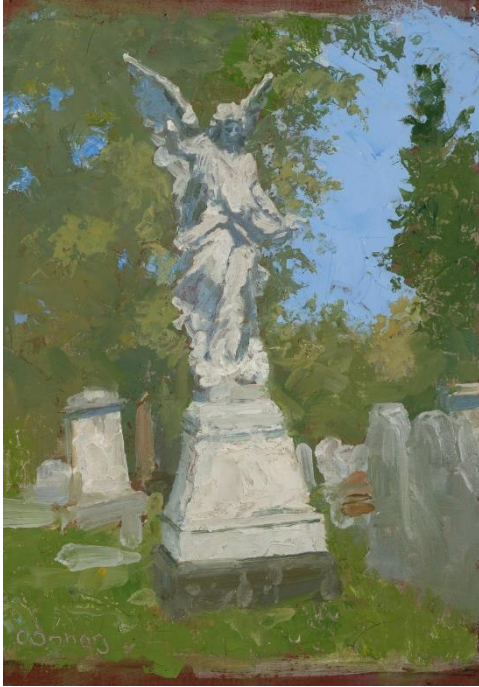


Gallery hours: Wednesday, Friday, Saturday, Sunday: 1 PM to 5 PM

November 2019

## Art Natters: Members News

### Patrick Connors (Continued)



Angel of Laurel Hill



Mid-Winter Late Afternoon Looking Southwest from Ridge



Summer Morning Gatehouse Access Road



Summer Morning Gate House Cypress

Gallery hours: Wednesday, Friday, Saturday, Sunday: 1 PM to 5 PM

November 2019

## Sketch Club Open Workshop Schedule

All workshops are open to the public. There is no need to register before attending. You do NOT have to be a member of the Philadelphia Sketch Club to participate in the workshops. Our workshops are open to anyone who is interested in drawing, painting or printmaking. All skill levels are welcome. Fees: Model workshops: \$8/session members, \$9/session for non-PSC members; Printmaking workshop: \$10/session; All workshops \$6 for full-time students. Monitored by PSC members.

| Life Model  | Costumed Model  | Printmaking  |
|---|---|--|
| <p>Mondays – Extended pose (multi-session):<br/>6:30 PM-9:30PM</p> <p>Monitors: Robert Bohne, Vince Docktor, Dan Kuetemeyer</p> <p>Tuesdays – Extended pose: 12:00 PM to 3:00 PM<br/>Monitor: Jacqueline Barnett</p> <p>Wednesdays – Extended pose: 6:30 to 9:30 PM<br/>Monitor: Vince Docktor</p> <p>Saturdays – Extended pose: 9:30 AM to 12:30 PM<br/>Monitor: Vince Docktor</p> | <p>Thursdays</p> <p>Extended pose<br/>12:00 PM to 3:00 PM<br/>Monitor: Bob Bohne.</p> | <p>Tuesdays</p> <p>10:00 AM to 2:00 PM<br/>Monitor:<br/>Elizabeth H. MacDonald</p> |

Please Note: Those who use oil paints should bring their own container(s) to remove used solvents. Odorless solvents only.

Thank you to all the PSC members who donate their time and expertise to make these workshops available to PSC members and the Philadelphia art community.

## Opportunities/Notices

As a courtesy to our non-PSC-member friends, in support of the Philadelphia artist community, we publish your notices, etc., free of charge. However, contributions to the PSC are always welcome. And, we will gladly consider your application for membership

[Contribute to the Sketch Club Here](#) [Apply for PSC Membership Here](#)

## Membership

### Not a PSC Member?: Join Now!

If you're reading this edition of the Portfolio and you're not a member of the PSC, you should consider joining the more than 200 other Philadelphia area artists who have. The PSC is one of the most active visual art venues serving center city Philadelphia. The PSC is a hands-on organization that offers its members the opportunity to participate in all aspects of creating and presenting work to the public. It presents over 20 scheduled group and solo exhibitions annually and offers a wide range of daily workshops. [Get info and an application here.](#)

If you are a member of the PSC, please feel free to share the Portfolio with your artist friends and encourage them to become members.

### Membership Renewal

You can check the status of your membership by going to the Current Members page on the PSC web-site: <http://sketchclub.org/sample-page/memberspace/>. All current members are listed. An asterisk (\*) means that the membership has expired but is within the 60-day grace period for renewal. Names in red are active links to the individual's web site.

Renew Now! <http://sketchclub.org/annual-dues-payment/>

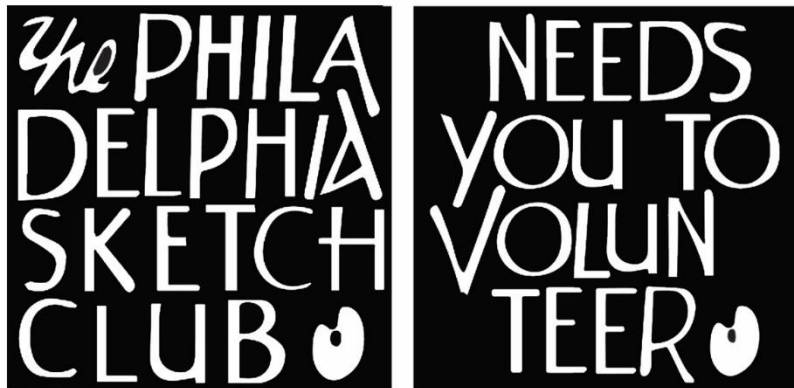
If you have any questions about your membership, please don't hesitate to contact us at [membership@sketchclub.org](mailto:membership@sketchclub.org) or call the office: 215-545-9298.



## Volunteer

### Be an Active Sketc Club Member; Volunteer!!

The Philadelphia Sketch Club is managed entirely by volunteers except for the gallery manager, housekeeping, and bookkeeper.



The PSC always needs volunteer members. Volunteering is one of the most important aspects of being a Sketch Club member and it is the one of the best ways to take advantage of the PSC. You'll be working with colleagues who share the same interests and helping the PSC provide unique services to the visual arts community. Sign up for an activity today.

Here are some of the activities that volunteers perform:

- Chair exhibitions
- Assist in hanging exhibitions
- Covering exhibition drop-offs and pick-ups
- Monitor workshops
- Assist with presentations
- Serve on the Board of Directors
- Serve as Key Circle volunteers
- Publish the Portfolio
- Manage the PSC web site
- Gallery coverage
- Graphics for Portfolio, PSC web site, social media
- Assist in every aspect of managing the club and providing member services

To get involved, contact:

Jackie Barnett

Volunteer Coordinator

Philadelphia Sketch Club

[jbarnett12@verizon.net](mailto:jbarnett12@verizon.net)

Gallery hours: Wednesday, Friday, Saturday, Sunday: 1 PM to 5 PM

November 2019

## Support the Sketch Club

### Contribute

Please consider making your tax-deductible contribution now. These funds will be put to good use providing enhanced services to our members and friends.

Membership dues cover only a small portion of the PSC's operating expenses. Competition for funding for arts organizations like the Sketch Club is increasingly competitive and total funding for the arts is shrinking. Your additional support will keep the PSC an active support for visual artists in the Metropolitan Philadelphia area. The Philadelphia Sketch Club is an IRS designated 501(c) (3) non-profit organization.

You can call the office at 215-545-9298, mail checks to the Sketch Club or visit the Contribute page of our Website.

Visit our **Contribute** page of our website to give online at:

<http://sketchclub.org/support-us/>

You can also support the PSC on an ongoing basis when you shop on Amazon. Go to:

<http://smile.amazon.com/> and enter the Philadelphia Sketch Club in the Pick your own charitable organization box.

Your support makes it possible for the PSC to continue providing ongoing daily workshops and numerous annual gallery exhibitions.



Sketch Club Members receive a  
25% discount at Merion Art.  
Use promo code "PSC"  
online at [www.merionart.com](http://www.merionart.com)

"Our staff of experienced artists, custom framers, and designers can answer your art materials questions and help to creatively solve all your artistic problems. Stop in our store for personalized friendly attention, or go to [merionart.com](http://merionart.com) for access to thousands of quality art products!"

Monday - Friday: 8:30am - 6:00pm  
Saturday: 9:00am - 5:30pm  
Sunday: 12:00pm - 5:00pm

**Merion Art & Repro Center**  
17 West Lancaster Avenue  
Ardmore, PA 19003

(610) 896-6161 - Phone  
(610) 896-7781 - Fax



Gallery hours: Wednesday, Friday, Saturday, Sunday: 1 PM to 5 PM

November 2019

## Support the Sketch Club

# PHOTOLounge

The PHOTOLounge supports the Philadelphia Sketch Club and its members:

**Sketch Club Members receive a 15% discount at PHOTOLounge.**

**Use online promo code "sketch".**

The PHOTOLounge is located at 1909 Chestnut St. Philadelphia PA 19103.

For nearly 20 years, PHOTOLounge's focus has been the simple idea that pictures should be beautiful, affordable, and long lasting. We're a very adept photo lab with diverse services from iPhone printing to shoebox scanning. You can bring us film for processing, and also order prints online, or from the App. Come in and print your world.

**Sketch Club Members receive a 15% discount at PHOTOLounge.**

**Use online promo code "sketch".**

**267-322-6651 – [www.myphotolounge.com](http://www.myphotolounge.com)**

## Sketch Club members receive 20% discount



Framing Family Treasures for over 20 Years



**We offer a variety of framing materials and techniques including:**

- Archival / conservation treatment • Specialty mats (Linen, Suede, Silk)
- Stretching / Blocking of needleart and oils
- 1000's of moulding choices • 22 karat finished corner frames • Memorabilia framing
- Custom toning / coloring • Decorative mat cuts • French matting • Fillets
- Mirrors • Shadowboxing • Dry Mounting

**[www.CanalFrame.com](http://www.CanalFrame.com) • [CanalFrame@comcast.net](mailto:CanalFrame@comcast.net) • 215-493-3660**

**1093 General Greene Road, Washington Crossing, PA 18977**

Gallery hours: Wednesday, Friday, Saturday, Sunday: 1 PM to 5 PM

November 2019

## Support the Sketch Club

### Like, Link & Share

If you're not following the Philadelphia Sketch Club on Facebook re-tweeting Sketch Club tweets yet, it's time that you did. We have well over 2000 Facebook followers. Get the word out about the Sketch Club. Please click the like button and share your comments and invite your friends to like our page.

Follow @PhilaSketchClub on Twitter, we have almost 400 followers. Please click the heart button and re-tweet our announcements.

Include links on your website, blogs and social media to The Philadelphia Sketch Club to increase traction across social media platforms.

Follow us on Facebook, Twitter and Instagram now!

Thanks to Don Brewer and Michelle Lockamy for managing PSC social media sites.



## Member Classifieds

Seeking Framers: Sketch Club members frequently ask about framing services. If you wish to provide framing services to PSC members, please contact the PSC at [info@sketchclub.org](mailto:info@sketchclub.org) or call the PSC office: 215 545-92908

From Sketch Club member **Joanne Hirsh**: Our offices, Berkshire Hathaway Fox & Roach have moved to The Harper, 112 S. 19th St. The Harper is a beautiful new rental building and features an entry level restaurant, K'far, by the chef of Zahav...come in and enjoy!





Gallery hours: Wednesday, Friday, Saturday, Sunday: 1 PM to 5 PM

November 2019

The Portfolio: The newsletter of the Philadelphia Sketch Club is published monthly. Editor, technical support and webmaster: Ken Weiner. Send your member news, announcements and corrections to [portfolio@sketchclub.org](mailto:portfolio@sketchclub.org). The due date for all materials is one week before the end of the month.

Back issues of the Portfolio are available at: <http://sketchclub.org/portfolio-archive/>

Thanks to PSC member volunteer **Ken Weiner** for his ongoing support of Sketch Club technology and communications functions.

#### **The Philadelphia Sketch Club**

235 S Camac Street  
Philadelphia, PA 19107  
(215) 545-9298  
<http://sketchclub.org/>  
[executivedirector@sketchclub.org](mailto:executivedirector@sketchclub.org)

Gallery Manager: Michelle Lockamy

#### **Officers:**

- President: Richard Harrington
- Vice President: Kenneth Weiner
- Secretary: Elise Anzini
- Treasurer: William Patterson

#### **Board of Directors**

- Jacqueline Barnett
- Renard Edwards
- Stephen Iwanczuk
- Edward Pluciennik
- Charles F. Tarr
- Gail Williams