

## January 2020 • Happy New Year!



Rich Harrington

**As a member or friend of the PSC, you know how valuable the Sketch Club it is to your creative life. Help us to continue enriching your life by giving us your extra support.**

**Go to: [DONATE NOW!](#)**

### This Month's Portfolio

Sketch Club Special Events	2
Main Gallery Schedule	3
Stewart Gallery Schedule	6
Sketch Club Activities	8
Sketch Club Open Workshop Schedule	11
Opportunities/Notices	12
Membership	14
Volunteer	15
Support the Sketch Club	16
Member Classifieds	18
Send your member news, announcements and corrections to: <a href="mailto:portfolio@sketchclub.org">portfolio@sketchclub.org</a> . The deadline for ALL submissions is 1-week before the end of the month.	

Reminder: It's never too late. You can always renew your membership

You may pay online at <http://sketchclub.org/annual-dues-payment/> or mail your check to:

The Philadelphia Sketch Club  
235 S. Camac St.  
Philadelphia, PA 19107

For questions please contact the Gallery Manager at 213335-545-9298 or email:

[executivedirector@sketchclub.org](mailto:executivedirector@sketchclub.org)

Late Breaking News – See items that were submitted after the publication date. Go to:

[info@sketchclub.org](mailto:info@sketchclub.org)

The PSC general email is: [info@sketchclub](mailto:info@sketchclub)

Gallery hours: By appointment: Wednesday, Friday, Saturday, Sunday: 1 PM to 5 PM

January 2020

## Sketch Club Special Events



## The 2020 Exhibition Schedule

The Sketch Club offers monthly exhibitions in the Upstairs Gallery and the Stewart Gallery. Artists, Friends, plan your submissions and visits now.

[Get the Schedule](#)



Gallery hours: By appointment: Wednesday, Friday, Saturday, Sunday: 1 PM to 5 PM

January 2020

## Main Gallery Schedule

[See the 2020 Exhibition Schedule](#)  
[Important Dates for all PSC Activities](#)

The 2020 Philadelphia Sketch Club Annual Domenic DiStefano Memorial Works on Paper Juried Exhibition: January 1 – 28, 2020:



2019 First Place Award, Marlene Adler, Torn Hearts Reunited

### Awards:

1st: Meg Constable "6-20-19"

2nd: Christian Walenski "Time Fleeting"

3rd: Edna Santiago "Blue"

#### Honorable Mentions:

- Edward Jenkins "Tower 24"
- Jennifer Kieyser "Layreas New Mexico"
- Richard Harrington "Bristol Coronet"
- Loos Award Works on Paper:
- Mary Waltham "Fracking...."

Most Translucent Watercolor: Richard Hoffman "Farm Store"

[See the On-line Gallery](#)

Reception: Sunday, Jan 12 from 2 to 4 PM

Gallery hours: By appointment: Wednesday, Friday, Saturday, Sunday: 1 PM to 5 PM

January 2020

## Main Gallery Schedule

Coming February 3 – 23, 2020:

The 36<sup>th</sup> Annual 2020 School District of Philadelphia High School Art Show  
at the Philadelphia Sketch Club

Collaborating to provide the 2020 HIGH SCHOOL ART SHOW

DELIVERY AND HANGING BY INVITED HS ART TEACHERS:

- Wednesday, January 29, 2020, 3:00 – 6:00 PM
- Thursday, January 30, 2020, 3:00 – 6:00 PM
- Friday, January 31, 2020, 3:00 – 6:00 PM

RECEPTION and AWARDS:

- Sunday, February 23, 2020, 2:00-3:30 PM

TAKE DOWN:

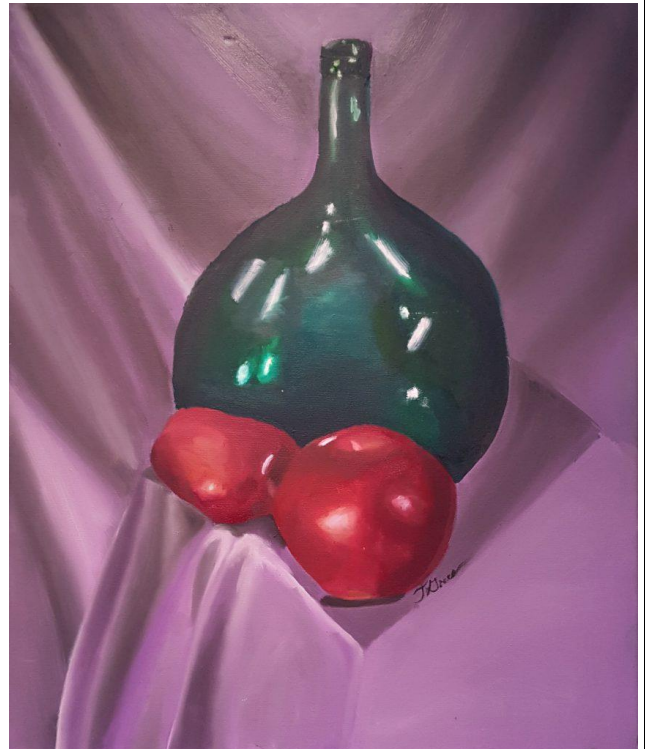
- Sunday, February 23, 2020, 3:30- 5:00 PM

JUDGING FOR AWARDS:

- Wednesday, February 5, 2020, 10:00 AM-5:00 PM

JUDGES:

- Gloria Popek, Exhibiting Artist, Educator, Teaching and Art Award Recipient
- Robin Miller, Exhibiting Artist, Educator, Member The Mosaic Society of Phila.
- Eileen Rudnick, Artist, K-8 Art teacher, Tyler School of Art Supervisor of future Art teachers.



Juror's Choice Award: Tajah Green, Grade 12, Franklin Learning Center, "Still Life", Oil on Canvas

Hello Sketch Club Members,

Once again it is time to start planning for the High School Art Show (2020). As usual, we will be asking our loyal generous members for tax deductible contributions for awards for the young artists' artwork. The same procedure is still in place. Please make your check out to the "Philadelphia Sketch Club", with a note in the lower left corner, "HS Art Show Award", and mail or bring it to the PSC office, Michelle Lockamy, Executive Director. Her hours are Wed., and Fri. 1:00-5:00PM. Also, notify the amount of your award (s) to Dorothy Roschen, in person, by Phone (215 848 3257), or email ([droschen@me.com](mailto:droschen@me.com)). Any amount is gratefully needed and appreciated. We do like each awardee to receive at least \$ 25.00. To achieve this, we combine donors for one award and some donors give multiple awards. Every donor is recognized on a posted complete awards list in the gallery, which is also in the catalogue. (Award amounts are not posted.)

## Main Gallery Schedule

Continued: The 36<sup>th</sup> Annual 2020 School District of Philadelphia High School Art Show  
at the Philadelphia Sketch Club

**THE CUT-OFF DATE FOR DONATING AWARDS IS MONDAY, FEBRUARY 3, 2019.**

Please mail \$25 or less award checks to Michelle Lockamy, Philadelphia Sketch club, 235 S. Camac St. Philadelphia, PA 19107.

Deborah Klose, Director of Art Education, School District of Philadelphia, will send the call to entry letters to all School District High School Art Teachers (no charter schools). Usually, about 25-30 teachers respond and they bring and hang 5 labeled pieces each from their classrooms.

To volunteer to help the Art Teachers hang the work on delivery days (Feb. 4,5,6) let Dorothy know or to sign up-go to the "Volunteers" under the Membership tab on the PSC website. Food donations for the reception (Feb. 23) will be asked for closer to that date.

The student work is not for sale, because they need the work for other exhibits and their portfolios to get into art colleges and universities.

Thank you, Members, for your wonderful support for this show. It would be absolutely impossible without you.

Sincerely,

Dorothy Roschen, Chair, 2020 HS Art Show, (215 848 3257), droschen@me.com, and Committee  
Deborah Klose, Director of Art Education, School District of Philadelphia



Gallery hours: By appointment: Wednesday, Friday, Saturday, Sunday: 1 PM to 5 PM

January 2020

## Stewart Gallery Schedule

January 1 – 28, 2020: Leslie K. Brill Solo Show



235 S. Camac Street  
Philadelphia, PA 19107  
[www.sketchclub.org](http://www.sketchclub.org)  
(215) 545 – 9298

### Leslie K. Brill

*new works and works anew*

January 1st - January 28th, 2020

**Opening reception:**

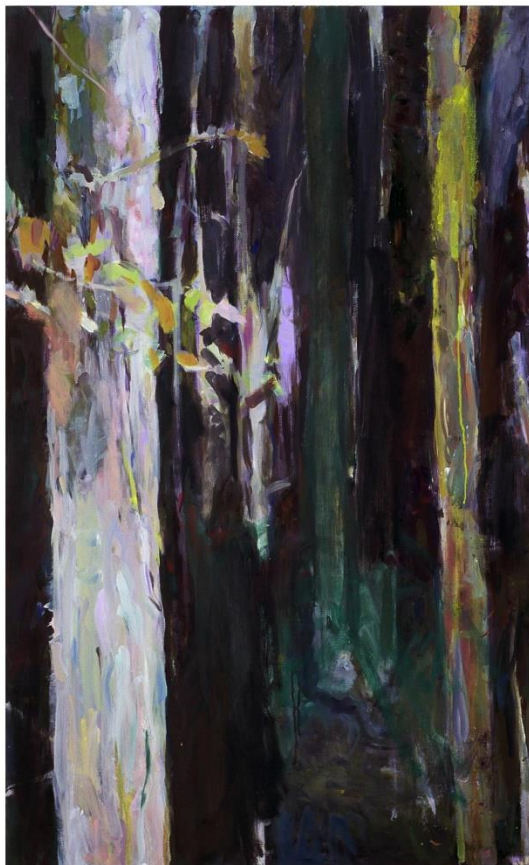
**Sunday, January 12, 2020 2-4 PM**

**Gallery Hours:**

**Wed, Fri, Sat & Sun 1-5 PM**

[www.lesliebrill.com](http://www.lesliebrill.com)

Image: *Night*, oil on mounted paper, 38" x 23"



Visit Leslie's website: [lesliebrill.com](http://lesliebrill.com)

Gallery hours: By appointment: Wednesday, Friday, Saturday, Sunday: 1 PM to 5 PM

January 2020

## Stewart Gallery Schedule



**Exhibition space in the Stewart Gallery is available for PSC Members!**

Reserve the gallery by contacting our  
Exhibition Coordinator:  
[exhibitions@sketchclub.org](mailto:exhibitions@sketchclub.org)

The space is \$150 for a month. Members can show once in the Stewart Gallery per year.

[See the 2020 Exhibition Schedule](#)  
[Important Dates for all PSC Activities](#)

## Sketch Club Activities

[Dinner Meeting.](#)

[RSVP Here Now!](#)

### January 15, 2020: Critique Night

Open to PSC Members and Non-Members

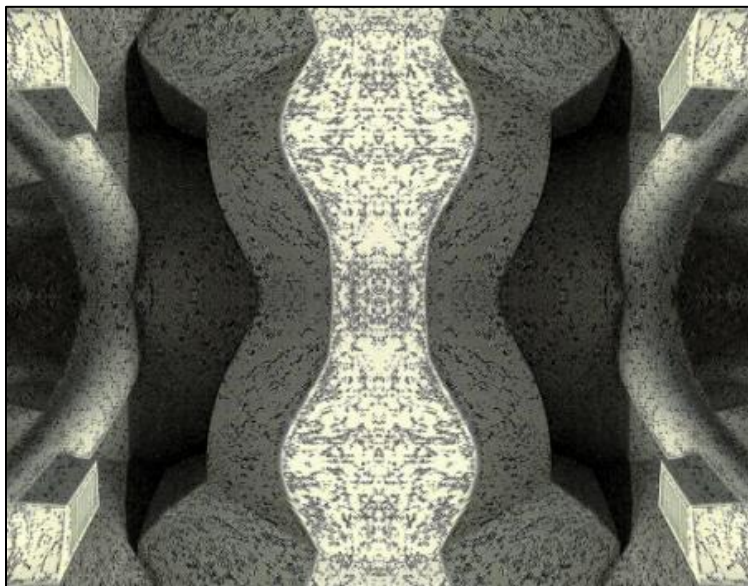
RSVP to Michelle Lockamy at 215-545-9298 or  
[executivedirector@sketchclub.org](mailto:executivedirector@sketchclub.org)

Critique Night is held in the Library of the Sketch Club every third Wednesday beginning at 7 PM. Bring work you've finished, work in progress, or just sketches for work you're planning! Photos, digital work, drawings, all mediums are welcome; we can project digital images on a screen for review, so you have the option to show work that may be too big or too heavy to transport to the Club. There is no one individual directing the critique, just your fellow artists and peers. Facilitated/monitored by Rich Harrington, PSC President



Thanks to PSC member volunteer **Rich Harrington** for organizing and monitoring this event

### January 9, 2020: Photo Circle



We will discuss new group activities and possibilities for expansion. The Photo Circle meets every 2<sup>nd</sup> Thursday at 6:30 PM. You can contact Steve anytime at [stphniwan@gmail.com](mailto:stphniwan@gmail.com) or 215-300-9192 (cell). **Steve Iwanczuk**, Photo Circle Monitor and Member of Philadelphia Sketch Club Board of Directors.

Thanks to PSC member volunteer **Steve Iwanczuk** for organizing and monitoring this event.



## Art Natters: Members News

Sketch Club member **Laura Marconi** will have an exhibition of her Icelandic landscapes at the Cosmopolitan Club of Philadelphia with the opening reception on January 31, 2020 from 5:00 - 7:00p.m.



Northern Pyramids, Oil on Arches Oil  
Paper on Panel 12 x 12

Meet the Artist Evening will be on February 13 from 5:00 - 7:00p.m. The show will be up until March 12, 2020.

She will show variations of landscapes using different mediums.

Laura has been going to Iceland since 2013 staying at artists residencies, since 2016

she has been a board member of Listhús Artspace. This past summer and part of autumn she was the Host Artist at the residency.

The Cosmopolitan Club of Philadelphia - 1616, Latimer Street – 215-735-1057

[www.cosclub.org](http://www.cosclub.org)



Portrait, Acrylic on Canvas 20 x 20

Fresh from his November show in the Stewart Room, Sketch Club member **Christopher Fowler's** work will be in the stairway gallery of the Or Hadash Synagogue (190 Camp Hill Rd in Fort Washington, PA) from January to mid-April 2020.



Sheep May Safely Graze

Gallery hours: By appointment: Wednesday, Friday, Saturday, Sunday: 1 PM to 5 PM

January 2020

## Art Natters: Members News

Sketch Club member **Su Horty** is pleased to announce that I have been accepted into the Philadelphia arts organization, InLiquid, and will have my painting, Color Pops 17 (the first one on the left on the postcard), included in InLiquid's January New Member Group Exhibition, New Now III.



Reception: January 9, 2020, 6-9 pm.

InLiquid is located at: 1400 N. American St., Philadelphia, PA 19122. The Crane Arts Building. Gallery: #108, 1st fl. Thanks to InLiquid, you can now find my paintings online at Artsy. Look here for more artworks in the coming year: <https://www.artsy.net/artist/su-knoll-horty>. In addition, my paintings can be found at Bluestone Fine Art Gallery in Old City.

Gallery hours: By appointment: Wednesday, Friday, Saturday, Sunday: 1 PM to 5 PM

January 2020

## Sketch Club Open Workshop Schedule

All workshops are open to the public. There is no need to register before attending. You do NOT have to be a member of the Philadelphia Sketch Club to participate in the workshops. Our workshops are open to anyone who is interested in drawing, painting or printmaking. All skill levels are welcome. Fees: Model workshops: \$8/session members, \$9/session for non-PSC members; Printmaking workshop: \$10/session; All workshops \$6 for full-time students. Monitored by PSC members.

Life Model	Costumed Model	Printmaking
<p>Mondays – Extended pose (multi-session): 6:30 PM-9:30PM</p> <p>Monitors: Robert Bohne, Vince Docktor, Dan Kuetemeyer</p> <p>Tuesdays – Extended pose: 12:00 PM to 3:00 PM Monitor: Jacqueline Barnett</p> <p>Wednesdays – Extended pose: 6:30 to 9:30 PM Monitor: Vince Docktor</p> <p>Saturdays – Extended pose: 9:30 AM to 12:30 PM Monitor: Vince Docktor</p>	<p>Thursdays</p> <p>Extended pose 12:00 PM to 3:00 PM Monitor: Bob Bohne.</p>	<p>Tuesdays</p> <p>10:00 AM to 2:00 PM Monitor: Elizabeth H. MacDonald</p>

Please Note: Those who use oil paints should bring their own container(s) to remove used solvents. Odorless solvents only.

Thank you to all the PSC members who donate their time and expertise to make these workshops available to PSC members and the Philadelphia art community.



## Opportunities/Notices

As a courtesy to our non-PSC-member friends, in support of the Philadelphia artist community, we publish your notices, etc., free of charge. However, contributions to the PSC are always welcome. And, we will gladly consider your application for membership

[Contribute to the Sketch Club Here](#)   [Apply for PSC Membership Here](#)

**Paul Williams** is a freelance New York artist. He has a degree in art and has had several art exhibits in Central NY as well as many art contests. Paul currently works from my home studio in Utica, NY where he has his gallery. Visit his website of my work for sale on [artpal.com/nguartist](http://artpal.com/nguartist). Paul designs his own greeting cards and works in different mediums. His favorite medium is pastel. His inspiration comes from any art that catches his eye.



## Opportunities/Notices

**Patricia Ingersoll** is currently featured in a two person exhibition at The National 121 N 2nd St, Philadelphia, PA 19106. I will be in another two person exhibition at Rosemont College in November 2020.



Left: Painted by Stephen Haigh  
Right: Painted by Patricia Ingersoll

## *Ingersoll and Haigh*

September 2019 – February 2020

*Ingersoll and Haigh* features the work of Philadelphia artists Patricia Ingersoll and Stephen Haigh.

Patricia Ingersoll's environment has always impacted her work. Correlations between human struggles and natural complexities seem to create a bridge, an intuitive synergy in terms of form, composition, and color combinations. Images of place and memory are integral to making these connections. She is always balancing these for the most impact. Places inspire strong emotions and engagement with the process where she feels at one with her work.

A Philadelphia born artist, Stephen Haigh's paintings seek to portray the textures, personalities, stories and design of weathered urban walls from the surrounding city landscape. Stephen has long been attracted to the rusted, decayed and worn surfaces that wear the marks of life. The stories they collect and the personalities they share are authentic. The walls, he believes are the diaries of the city.

**INLIQUID™** InLiquid.org

@ The National · 215.235.3405 · For Sales Inquiries, Contact Elizabeth@inliquid.org



## Membership

### Not a PSC Member?: Join Now!

If you're reading this edition of the Portfolio and you're not a member of the PSC, you should consider joining the more than 200 other Philadelphia area artists who have. The PSC is one of the most active visual art venues serving center city Philadelphia. The PSC is a hands-on organization that offers its members the opportunity to participate in all aspects of creating and presenting work to the public. It presents over 20 scheduled group and solo exhibitions annually and offers a wide range of daily workshops. [Get info and an application here.](#)

If you are a member of the PSC, please feel free to share the Portfolio with your artist friends and encourage them to become members.

### Membership Renewal

You can check the status of your membership by going to the Current Members page on the PSC web-site: <http://sketchclub.org/sample-page/memberspace/>. All current members are listed. An asterisk (\*) means that the membership has expired but is within the 60-day grace period for renewal. Names in red are active links to the individual's web site.

Renew Now! <http://sketchclub.org/annual-dues-payment/>

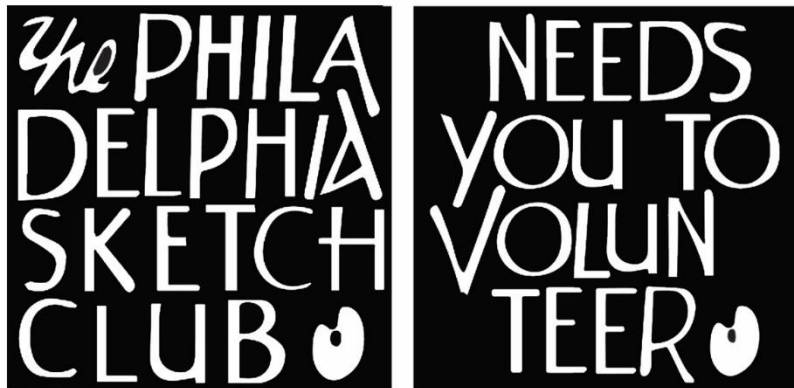
If you have any questions about your membership, please don't hesitate to contact us at [membership@sketchclub.org](mailto:membership@sketchclub.org) or call the office: 215-545-9298.



## Volunteer

### Be an Active Sketc Club Member; Volunteer!!

The Philadelphia Sketch Club is managed entirely by volunteers except for the gallery manager, housekeeping, and bookkeeper.



The PSC always needs volunteer members. Volunteering is one of the most important aspects of being a Sketch Club member and it is the one of the best ways to take advantage of the PSC. You'll be working with colleagues who share the same interests and helping the PSC provide unique services to the visual arts community. Sign up for an activity today.

Here are some of the activities that volunteers perform:

- Chair exhibitions
- Assist in hanging exhibitions
- Covering exhibition drop-offs and pick-ups
- Monitor workshops
- Assist with presentations
- Serve on the Board of Directors
- Serve as Key Circle volunteers
- Publish the Portfolio
- Manage the PSC web site
- Gallery coverage
- Graphics for Portfolio, PSC web site, social media
- Assist in every aspect of managing the club and providing member services

To get involved, contact:

Jackie Barnett

Volunteer Coordinator

Philadelphia Sketch Club

[jbarnett12@verizon.net](mailto:jbarnett12@verizon.net)

## Support the Sketch Club

### Contribute

Please consider making your tax-deductible contribution now. These funds will be put to good use providing enhanced services to our members and friends.

Membership dues cover only a small portion of the PSC's operating expenses. Competition for funding for arts organizations like the Sketch Club is increasingly competitive and total funding for the arts is shrinking. Your additional support will keep the PSC an active support for visual artists in the Metropolitan Philadelphia area. The Philadelphia Sketch Club is an IRS designated 501(c) (3) non-profit organization.

You can call the office at 215-545-9298, mail checks to the Sketch Club or visit the Contribute page of our Website.

Visit our **Contribute** page of our website to give online at:

<http://sketchclub.org/support-us/>

You can also support the PSC on an ongoing basis when you shop on Amazon. Go to:

<http://smile.amazon.com/> and enter the Philadelphia Sketch Club in the Pick your own charitable organization box.

Your support makes it possible for the PSC to continue providing ongoing daily workshops and numerous annual gallery exhibitions.



Sketch Club Members receive a  
25% discount at Merion Art.  
Use promo code "PSC"  
online at [www.merionart.com](http://www.merionart.com)

"Our staff of experienced artists, custom framers, and designers can answer your art materials questions and help to creatively solve all your artistic problems. Stop in our store for personalized friendly attention, or go to [merionart.com](http://merionart.com) for access to thousands of quality art products!"

Monday - Friday: 8:30am - 6:00pm  
Saturday: 9:00am - 5:30pm  
Sunday: 12:00pm - 5:00pm

**Merion Art & Repro Center**  
17 West Lancaster Avenue  
Ardmore, PA 19003

(610) 896-6161 - Phone  
(610) 896-7781 - Fax

Gallery hours: By appointment: Wednesday, Friday, Saturday, Sunday: 1 PM to 5 PM

January 2020

## Support the Sketch Club

### PHOTOLounge

The PHOTOLounge supports the Philadelphia Sketch Club and its members:

**Sketch Club Members receive a 15% discount at PHOTOLounge.**

**Use online promo code "sketch".**

The PHOTOLounge is located at 1909 Chestnut St. Philadelphia PA 19103.

For nearly 20 years, PHOTOLounge's focus has been the simple idea that pictures should be beautiful, affordable, and long lasting. We're a very adept photo lab with diverse services from iPhone printing to shoebox scanning. You can bring us film for processing, and also order prints online, or from the App. Come in and print your world.

**Sketch Club Members receive a 15% discount at PHOTOLounge.**

**Use online promo code "sketch".**

**267-322-6651 – [www.myphotolounge.com](http://www.myphotolounge.com)**

## Sketch Club members receive 20% discount



Framing Family Treasures for over 20 Years



**We offer a variety of framing materials and techniques including:**

- Archival / conservation treatment • Specialty mats (Linen, Suede, Silk)
- Stretching / Blocking of needleart and oils
- 1000's of moulding choices • 22 karat finished corner frames • Memorabilia framing
- Custom toning / coloring • Decorative mat cuts • French matting • Fillets
- Mirrors • Shadowboxing • Dry Mounting

**[www.CanalFrame.com](http://www.CanalFrame.com) • [CanalFrame@comcast.net](mailto:CanalFrame@comcast.net) • 215-493-3660**

**1093 General Greene Road, Washington Crossing, PA 18977**



Gallery hours: By appointment: Wednesday, Friday, Saturday, Sunday: 1 PM to 5 PM

January 2020

## Support the Sketch Club

### Like, Link & Share

If you're not following the Philadelphia Sketch Club on Facebook re-tweeting Sketch Club tweets yet, it's time that you did. We have well over 2000 Facebook followers. Get the word out about the Sketch Club. Please click the like button and share your comments and invite your friends to like our page.

Follow @PhilaSketchClub on Twitter, we have almost 400 followers. Please click the heart button and re-tweet our announcements.

Include links on your website, blogs and social media to The Philadelphia Sketch Club to increase traction across social media platforms.

Follow us on Facebook, Twitter and Instagram now!

Thanks to Don Brewer and Michelle Lockamy for managing PSC social media sites.



## Member Classifieds

Seeking Framers: Sketch Club members frequently ask about framing services. If you wish to provide framing services to PSC members, please contact the PSC at [info@sketchclub.org](mailto:info@sketchclub.org) or call the PSC office: 215 545-92908



Gallery hours: By appointment: Wednesday, Friday, Saturday, Sunday: 1 PM to 5 PM

January 2020

The Portfolio: The newsletter of the Philadelphia Sketch Club is published monthly. Editor, technical support and webmaster: Ken Weiner. Send your member news, announcements and corrections to [portfolio@sketchclub.org](mailto:portfolio@sketchclub.org). The due date for all materials is one week before the end of the month.

Back issues of the Portfolio are available at: <http://sketchclub.org/portfolio-archive/>

Thanks to PSC member volunteer **Ken Weiner** for his ongoing support of Sketch Club technology and communications functions.

#### **The Philadelphia Sketch Club**

235 S Camac Street  
Philadelphia, PA 19107  
(215) 545-9298  
<http://sketchclub.org/>  
[executivedirector@sketchclub.org](mailto:executivedirector@sketchclub.org)

Gallery Manager: Michelle Lockamy

#### **Officers:**

- President: Richard Harrington
- Vice President: Kenneth Weiner
- Secretary: Elise Anzini
- Treasurer: William Patterson

#### **Board of Directors**

- Jacqueline Barnett
- Renard Edwards
- Stephen Iwanczuk
- Edward Pluciennik
- Charles F. Tarr
- Gail Williams