

Gallery hours: By appointment: Wednesday, Friday, Saturday, Sunday: 1 PM to 5 PM

July 2020

July 2020

MASK FASHIONS FOR ARTISTS



THE **MARILYN**
FOR THOSE WHO LOVE
POP CULTURE.



THE **ANDY**
FOR THOSE WHO
LOVE POP ART.



THE **PABLO**
WHEN YOU SEE
THINGS FROM A
DIFFERENT PERSPECTIVE



THE **ALFRED**
WHEN A SITUATION
SEEMS COMPLETELY
MAD.



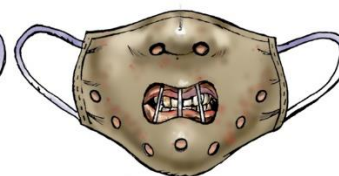
THE **ZAPPA**
PERFECT FOR SOCIAL EVENTS
LIKE St. ALFONZO'S PANCAKE
BREAKFAST.



THE **GROUCHO**
WHEN YOU FEEL LIKE
BEING WITTY AND
ALSO KINDA SARCASTIC
AND CYNICAL.



THE **MOONK**
WHEN YOU JUST FEEL
LIKE SCREAMING.



THE **PERKINS**
WHEN YOU DON'T WANT
ANY ONE TO TALK TO YOU.

HARRINGTON ©2020

Rich Harrington

Look for updated on-line activities in response to COVID-19: Page 2

This Month's Portfolio

Sketch Club Special Events	2
Main Gallery Schedule	5
Stewart Gallery Schedule	7
Sketch Club Activities	8
Sketch Club Open Workshop Schedule	14
Opportunities/Notices	15
Membership	18
Volunteer	19
Support the Sketch Club	20
Member Classifieds	20

Send your member news, announcements and corrections to: portfolio@sketchclub.org. The deadline for ALL submissions is 1-week before the end of the month.

Reminder: It's never too late. You can always renew your membership

You may pay online at <http://sketchclub.org/annual-dues-payment/> or mail your check to:

The Philadelphia Sketch Club
235 S. Camac St.
Philadelphia, PA 19107

For questions please contact the Gallery Manager at 215-545-9298 or email:

gallerymanager@sketchclub.org

Late Breaking News – See items that were submitted after the publication date. Go to:

<http://sketchclub.org/late-breaking-news/>

The PSC general email is: info@sketchclub.org

Sketch Club Special Events

The Philadelphia Sketch Club Critique Face Book group



The Philadelphia Sketch Club Critique group on FaceBook is growing and giving members a place to come show their work-in-progress (WIP), critique other members' works and converse, very much like we normally do at the Club House.

Since this Critique group is private, for members only, it gives us a chance to privately share our

WIP and get feedback while interacting with other artists.

All active Sketch Club members are welcome to come join:

<https://www.facebook.com/groups/PSCCritique/>

If you have been thinking of joining the Sketch Club, now is a great time to become a member.

<http://sketchclub.org/sample-page/join/>

Take part in monthly challenges to create new artwork based on a new theme each month.

There is a monthly theme but members mostly post open-themed WIP. The June theme is "The Longest Day of the Year".

Suggestions are being taken for the July theme. The variety of work and discussion has been great. The fine summer weather and long days have favored our plein air artists.

Here's how the FaceBook critique group works:

- Go to the new group page and request access, which is available to all Club members in good standing.
- Once in the group, post your work and watch as other members post their artwork for the month's composition theme.
- This Facebook Group is private; this means that as members submit their work others are invited to critique each other in a professional and respectful way.
- Make suggestions for new themes and vote for your favorite.
- Stay well, stay safe and stay creative!
Don Gauger -- Inaugural champion for the online PSC critique.

Gallery hours: By appointment: Wednesday, Friday, Saturday, Sunday: 1 PM to 5 PM

July 2020

Sketch Club Special Events

Sketch Club On-Line Gallery: **Call for Work!**

There's always room for more work: Submit Now!

The Sketch Club is hosting an on-going open gallery at <http://sketchclub.org/sketch-club-open-gallery/>.
This gallery is open to PSC members and non-members.

Submit up to 4 images of your work or of yourself working along with a very brief description to
portfolio@sketchclub.org.

Include for your work: Your name; Title; size; and medium.

For a photos of yourself include: Who you are and a brief description of the the image.

Zoom Workshops



We are planning additional Zoom workshops. Watch for email update for details here and at: sketchclub.org

Sketch Club Special Events

Sheltering in Place, Social Distancing

You are all aware of the myriad closings, cancellations and postponements by all organizations in response to the COVID-19 pandemic. The Sketch Club intends to comply with all required social conventions. For the foreseeable future, we will not be holding any events at the PSC facility.

Our gallery manager, Kaylie, will be working from home during our scheduled hours office hours:

Wednesday and Friday 1 PM to 5 PM. She can be reached by email

at gallerymanager@sketchclub.org. You can also leave messages on the PSC phone: 215-545-9298 and your call will be returned as quickly as possible.



Stay in Touch with On-Line Resources

- The Sketch Club's web site: sketchclub.org
- Our Facebook page: <https://www.facebook.com/thesketchclub/>
- Instagram: <https://www.instagram.com/philadelphiasketch/>
- Twitter: <https://twitter.com/PhilaSketchClub>
- Members: Stay in touch with other PSC colleagues. For contact information, go to the members only page at: <http://sketchclub.org/members-only-2/>. See Stay in touch with current Sketch Club Members in the members section below for instructions.
- Non Sketch Club friends can find a listing of current members names and business websites if they have one at: <http://sketchclub.org/sample-page/current-members-contact-list/>.

Coming Soon

We are currently exploring ways to enhance existing on-line services and to create new opportunities for PSC members to continue to share their work, creative ideas, and resources

- We are creating a monthly Members only Critique on a Members only Facebook page. See next page.
- We will make an on-line gallery for members to display work. Details are still be hammered out. We will notify members of details via email when this site is available

We will notify members of details via email when the new features are available.

Main Gallery Schedule

[See the 2020 Exhibition Schedule](#)
[Important Dates for all PSC Activities](#)

Art of the Flower Exhibition

March 2 – 19

Reception:

Sunday March 15th, 2020, 2:00 –
4:00 PM

Awards and presentation of
the Donald C. Meyer Medal
at 3:00 PM



Image: Doris Peltzman, The Red Kimono

On-line Gallery Still Available:

<http://sketchclub.org/2020-art-of-the-flower-exhibition/-gallery>

Main Gallery Schedule

Coming March 23 – April 30:

Philadelphia Sketch Club's 157th Annual Exhibition of Small Oil Paintings



Matt DeProspero, Got Milk, Oil on panel – Best in Show 2019

This year's exhibition runs from March 23 to April 30, with a reception on April 5 from 2 to 4 PM. Over 150 works by prominent and emerging artists will be on display. This exhibition represents an opportunity for today's artists to connect with many of the great artists of the past. You can have your work exhibited just as Eakins, Anshutz and N. C. Wyeth have.

A History of the Exhibition of Small Oil Paintings

The 157th Annual Exhibition of Small Oil Paintings presented by the Philadelphia Sketch Club represents one of the longest running and most prestigious juried exhibitions in the country. Founded in 1860, the Sketch Club is America's oldest artists club. Originally, the show was founded so that artists could display a number of small examples of their works with the

hope that a patron would order a larger painting. Works can be no larger than 20" x 20" excluding frame.

Awards

In addition to cash awards, the R. Tait McKenzie Small Oils Medal is presented to the First Place winner. Dr. McKenzie was an artist who created Olympic medals, but he was also a physician who developed many of the modern theories of physical therapy. He designed a medal specifically for this exhibition. In addition to the three Best in Show awards, there will also be special awards for the Best Landscape, Still Life, Portrait and Abstract.

Prior medal winners in this exhibition have included Paulette Van Roekens, John Folinsbee, Alice Kent Stoddard, Arthur Meltzer, Antonio Martino, Dorothy Van Loan, Doris Silk, John Redmond and Al Gury.

On-line Gallery Still Available

<http://sketchclub.org/157th-small-oil-paintings-2020/#gallery>

Gallery hours: By appointment: Wednesday, Friday, Saturday, Sunday: 1 PM to 5 PM

July 2020

Main Gallery Schedule

The Workshop Show: May 4 – 28

EXHIBITION CANCELLED DUE TO COVID-19



Stewart Gallery Schedule



**Exhibition space in
the Stewart Gallery
is available for PSC
Members!**

Reserve the gallery by
contacting our
Exhibition Coordinator:
exhibitions@sketchclub.org

The space is \$150 for a
month. Members can
show once in the Stewart
Gallery per year.

[See the 2020 Exhibition Schedule](#)
[Important Dates for all PSC Activities](#)

Sketch Club Activities

Critique Night: TBD

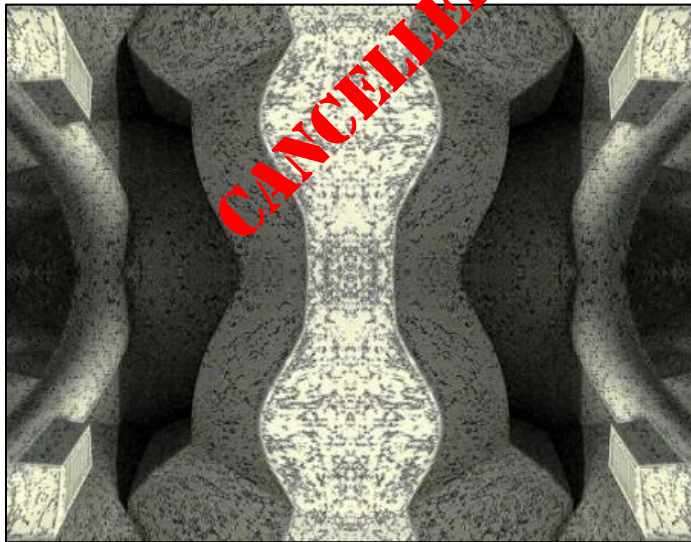
Open to PSC Members and Non-Members

Critique Night is held in the Library of the Sketch Club every third Wednesday beginning at 7 PM. Bring work you have finished, work in progress, or just sketches for work you're planning! Photos, digital work, drawings, all mediums are welcome; we can project digital images on a screen for review, so you have the option to show work that may be too big or too heavy to transport to the Club. There is no one individual directing the critique, just your fellow artists and peers. Facilitated/monitored by Rich Harrington, PSC President



Thanks to PSC member volunteer **Rich Harrington** for organizing and monitoring this event

Photo Circle: TBD



We will discuss new group activities and possibilities for expansion. The Photo Circle meets every 2nd Thursday at 6:30 PM. You can contact Steve anytime at stphniwan@gmail.com or 215-300-9192 (cell). **Steve Iwanczuk**, Photo Circle Monitor and Member of Philadelphia Sketch Club Board of Directors.

Thanks to PSC member volunteer **Steve Iwanczuk** for organizing and monitoring this event.

Art Natters: Members News

International Art-in-Place exhibition features four Princeton artists

During the Covid 19 pandemic museums and galleries have closed, and local art exhibitions and events have all been cancelled. How encouraging that four Princeton artists participated in Art-in-Place an international initiative from Terrain Exhibitions and CNL projects based in Chicago. Art-in-Place *'invites artists to exhibit an original work of art to be displayed outside their home or from a window visible to the public'*.

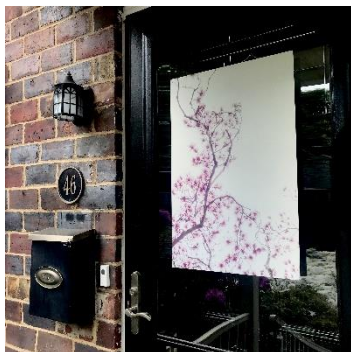


Mary Waltham

This collective action provides artists and community members with a sense of hope and connectivity through the experience of public art.

The four Princeton participants, all members of the just-formed Princeton Artist Directory (PAD), are Mic Boekelmann (www.micboekelmann.com), Robin Resch (www.robinresch.net), Vince Bush (www.vcabdesigns.com), and Sketch Club member Mary Waltham (www.marywaltham.com).

More than 275 individual artists in the US, Canada, Germany, India, Israel, Japan, and Peru are exhibiting Art-in-Place that will run until August 23rd. Visit <https://www.cnlprojects.org/artinplace> to view all participating artists. A collection of postcards documenting all the work in Art-in-Place will serve as an archive of the project, a fundraising effort, and a platform to offer art as a way to connect with others.



Robin Resch

Art in Place opened on May 26, and due to its success will now run until August 23rd. All artists who have not yet participated are encouraged to consider doing so. The organizers CNL projects state, "The deadline for new and updated projects is July 4th. Late submissions will not be accepted. Please click this [link](#)

(https://docs.google.com/forms/d/1F917fgJ803Zh20GZI27SjOdAZkCT4LvkJdY5BDCDhU/viewform?edit_requested=true&pli=1) to access the form to submit images and information:
https://docs.google.com/forms/d/1F917fgJ803Zh20GZI27SjOdAZkCT4LvkJdY5BDCDhU/edit?usp=drive_web "

So far local media have covered the exhibition and people walk, cycle or drive to each site to view the work. Each piece is marked on a map on the CNL projects site.



Vince Bush



Mic Boekelmann

Art Natters: Members News

Two pieces from Sketch Club member **Daniel Neufeld**. One is a drawing from a New Year's Day photo taken at the Kimmel Center of a band performing on stage in the plaza area. I titled it "Strings and Percussion". The medium is pen and ink wash on Bristol board, 14 by 17 inches. In this drawing, I've included some movements showing in the musicians' arms and hands as they were playing their instruments. I added pen strokes that no one can really see nor capture in person with still cameras as well as video ones as a form of expressionism.



Strings and Percussion



Blue Angels and Thunderbirds

The other piece of mine is a painting from another photo I took close up of the Blue Angels and the Thunderbirds. From my deck at my place on the date that the aircrafts soared over Philadelphia on April 28th. It's done in acrylic paint on a sheet of acrylic paper, 9 by 12 inches. In fact, I made a selfie video

where I took and filmed a step by step process of painting every part of it. You can find my video on my website (danielneufeld.com) and on my Facebook page.

Art Natters: Members News

From Sketch Club member **Richard Ranck**. This piece in process for show whose date is in the grips of the pandemic. Coincidentally it is about masks!



Work in progress. Working title: "Disguise" -Various wood and paint

Art Natters: Members News

Sketch Club member **Sheldon Strober's** "The Hermit's Vacation" 36x40", Acrylic on canvas, The image is based on person and a place somewhere in Salem county, NJ



The Hermit's Vacation

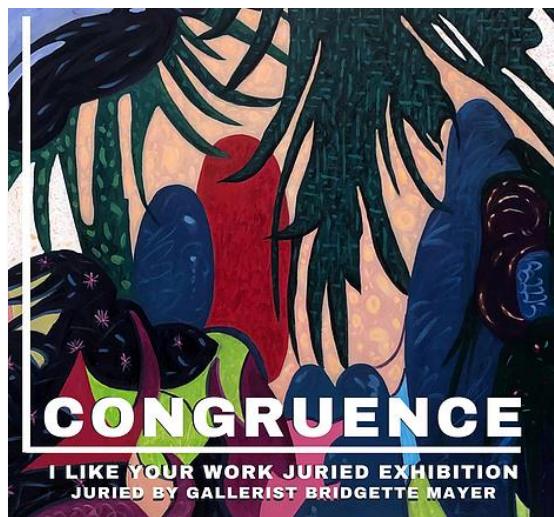
The current Cofid19 pandemic has presented a number of scheduling challenges, as to if and when to have Salem County's annual Arts Ib Bloom Festival. The following dates differ greatly from that which was originally in place.. A virtual versión has been scheduled on Facebook with videos of 20 festival artists May 16 and 17. The actual driving tour through the country towns and Hamlets to visit nearly 30 artists' studios and galleries will take place from 10 to 5pm on Saturday and 11/28 and Sunday, 11/29.

My video includes 9 of my Images which Cover a cross section of my recent paintings, prints and photographs.. The artworks are accompanied by narratives of each art piece and pertinent autobiographical Information. My Gardens, studio and Gallery will be open to the public during the driving tour all day

on Nov. 28 and 29. We welcome you to picturesque Salem county on the Delaware to see the videos and enjoy our art sites, The tour is self guided and free of charge. contact us at – <http://www.artsinbloomnj.com>

Art Natters: Members News

From Sketch Club member **Su Horthy**



JUROR STATEMENT

To be congruent means to be in harmony, agreement, and compatibility.

The artists I selected from this recent call for I Like Your Work Podcast Summer Juried Exhibition had a high degree of personal congruence that stood out. I found that many of them had harmony in their portfolios and how they presented their work for the call to art.

Being an artist is a lifetime process. It means constant evolution and honing of one's skillsets for the mediums and methods of artmaking. The 500+ applicants gave me the challenge to call out who was meeting that challenge now

as a creative.

I got to review portfolios from around the United States and abroad, see wonderful ideas and processes in action and appreciate the incredible amount of diversity that is available in how someone decides how to make art and what their artwork is really about. I saw many refreshing ideas including weaving with street posters and working with color and color combinations that were stunning.

Many of the artists had ideas that were energizing and thought-provoking and some of them literally took me away as I wondered if they were exploring imagery from memory, imagination, or their backyard or hometown.

It was a pleasure to get to know all of you through what you shared and I congratulate the accepted works and urge those who had works that were not selected to stay the course and keep making art!"

-Bridgette Mayer
Bridgettemayer.com
Bridgettemayergallery.com



Su Horthy: "Color Pops, Beautiful Transients 3"
Oil & Graphite on Canvas 30"x30"

Gallery hours: By appointment: Wednesday, Friday, Saturday, Sunday: 1 PM to 5 PM

July 2020

Sketch Club Open Workshop Schedule

All workshops are open to the public. There is no need to register before attending. You do NOT have to be a member of the Philadelphia Sketch Club to participate in the workshops. Our workshops are open to anyone who is interested in drawing, painting or printmaking. All skill levels are welcome. Fees: Model workshops: \$8/session members, \$9/session for non-PSC members; Printmaking workshop: \$10/session; All workshops \$6 for full-time students. Monitored by PSC members.

Life Model	Costumed Model	Printmaking
<p>Mondays – 5, 20, and 40-minute poses 5:30 PM-9:30PM Monitors: Jackie Barnett and Tom Kohlmann</p> <p>Tuesdays – Extended pose: 12:00 PM to 3:00 PM Monitor: Jacqueline Barnett</p> <p>Wednesdays – Extended pose: 6:30 to 9:30 PM Monitor: Vince Docktor</p> <p>Saturdays – Extended pose: 9:30 AM to 12:30 PM Monitor: Vince Docktor</p>	<p>Thursdays Extended pose 12:00 PM to 3:00 PM Monitor: Bob Bohne.</p>	<p>Tuesdays 10:00 AM to 2:00 PM Monitor: Elizabeth H. MacDonald</p>

WATCH FOR UPDATES - CANCELLED DUE TO COVID-19

Please Note: Those who use oil paints should bring their own container(s) to remove used solvents. Odorless solvents only.

Thank you to all the PSC members who donate their time and expertise to make these workshops available to PSC members and the Philadelphia art community.

Opportunities/Notices

As a courtesy to our non-PSC-member friends, in support of the Philadelphia artist community, we publish your notices, etc., free of charge. However, contributions to the PSC are always welcome. And, we will gladly consider your application for membership

[Contribute to the Sketch Club Here](#) [Apply for PSC Membership Here](#)

Valerie Coursen new artwork on archival watercolor paper. "THRIVE" 43 x 44" Valerie's unique artwork can be viewed by following on

[Instagram.com/ValerieCoursen/](https://www.instagram.com/ValerieCoursen/) and by appointment from her studio in Narberth, PA and East End Gallery Nantucket, MA
ValerieCoursenArt@gmail.com



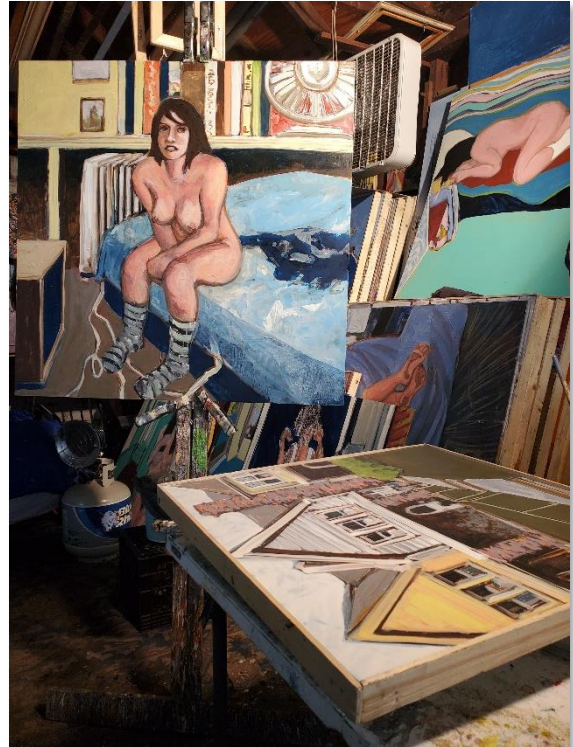
"Thrive" 43"x44"

Gallery hours: By appointment: Wednesday, Friday, Saturday, Sunday: 1 PM to 5 PM

July 2020

Opportunities/Notices

Lockdown in the Studio in Doylestown. **David Ohlerking**



Lockdown in the Studio in Doylestown

Opportunities/Notices

Call for Entries: 14th Annual Juried Photography Exhibit 2020



All photographers are invited to enter Media Arts Council's 14th Annual Juried Photography Exhibit, PhotoEx.

The theme for 2020 is: "H2O." Photos may depict any subject matter in any location, provided they reflect the theme. Deadline for entries is 11:59 PM, Saturday August 22, 2020.

H2O: What does it mean to you? One of the most plentiful and essential compounds on earth, it is the basis of all living organisms. This theme invites you to use the concept of "H2O" in your photographic submissions, incorporating your unique creative interpretations for the PhotoEx 2020 Juried Exhibition.

We are currently in unprecedented times. Art is needed more than ever during this troubling global event. Our photographic responses to this challenge

could result in a solitary adventure, a creative catharsis, or a new opportunity to simply distract ourselves from the uncertainty around us. We hope this challenge inspires you to take a second look and find unique twists to this universal theme.

For more information, including links to download pdf's of exhibit rules and entry form, go to:

<https://mediaartscouncil.org/photoex>

Membership

Stay in touch with current Sketch Club Members

Don't let sheltering in place prevent you from staying in touch with your Sketch Club friends and colleagues. Sketch Club members can access contact information for all current members. Go to the members only page at: <http://sketchclub.org/members-only-2/>. After you log-in with the password sent to you in your acceptance email you can click on the Membership Directory link to access members contact information. Non Sketch Club friends can find a listing of current members along with their websites if they have one at: <http://sketchclub.org/sample-page/current-members-contact-list/>:

Recent New Sketch club Members

- Not a member? Your name should be here!

For a complete listing of Sketch Club members, go to: <http://sketchclub.org/sample-page/current-members-contact-list/>

Not a PSC Member?: Join Now!

If you're reading this edition of the Portfolio and you're not a member of the PSC, you should consider joining the more than 200 other Philadelphia area artists who have. The PSC is one of the most active visual art venues serving center city Philadelphia. The PSC is a hands-on organization that offers its members the opportunity to participate in all aspects of creating and presenting work to the public. It presents over 20 scheduled group and solo exhibitions annually and offers a wide range of daily workshops. [Get info and an application here.](#)

If you are a member of the PSC, please feel free to share the Portfolio with your artist friends and encourage them to become members.

Membership Renewal

You can check the status of your membership by going to the Current Members page on the PSC web-site: <http://sketchclub.org/sample-page/memberspace/>. All current members are listed. An asterisk (*) means that the membership has expired but is within the 60-day grace period for renewal. Names in red are active links to the individual's web site.

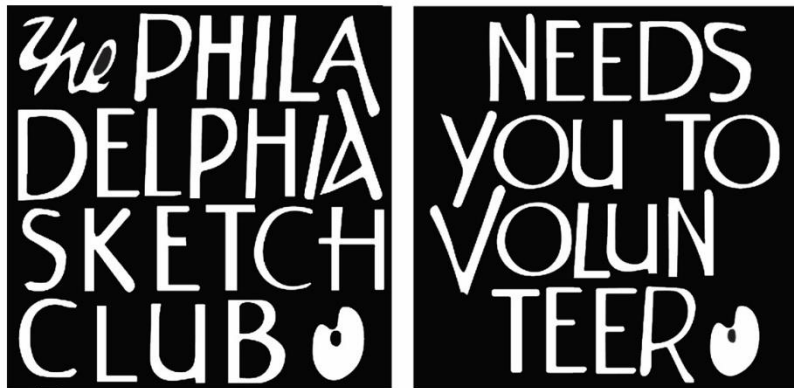
Renew Now! <http://sketchclub.org/annual-dues-payment/>

If you have any questions about your membership, please don't hesitate to contact us at membership@sketchclub.org or call the office: 215-545-9298.

Volunteer

Be an Active Sketc Club Member; Volunteer!!

The Philadelphia Sketch Club is managed entirely by volunteers except for the gallery manager, housekeeping, and bookkeeper.



The PSC always needs volunteer members. Volunteering is one of the most important aspects of being a Sketch Club member and it is the one of the best ways to take advantage of the PSC. You'll be working with colleagues who share the same interests and helping the PSC provide unique services to the visual arts community. Sign up for an activity today.

Here are some of the activities that volunteers perform:

- Chair exhibitions
- Assist in hanging exhibitions
- Covering exhibition drop-offs and pick-ups
- Monitor workshops
- Assist with presentations
- Serve on the Board of Directors
- Serve as Key Circle volunteers
- Publish the Portfolio
- Manage the PSC web site
- Gallery coverage
- Graphics for Portfolio, PSC web site, social media
- Assist in every aspect of managing the club and providing member services

To get involved, contact:

Jackie Barnett

Volunteer Coordinator

Philadelphia Sketch Club

jbarnett12@verizon.net

Support the Sketch Club

Contribute

Please consider making your tax-deductible contribution now. These funds will be put to good use providing enhanced services to our members and friends.

Membership dues cover only a small portion of the PSC's operating expenses. Competition for funding for arts organizations like the Sketch Club is increasingly competitive and total funding for the arts is shrinking. Your additional support will keep the PSC an active support for visual artists in the Metropolitan Philadelphia area. The Philadelphia Sketch Club is an IRS designated 501(c) (3) non-profit organization.

You can call the office at 215-545-9298, mail checks to the Sketch Club or visit the Contribute page of our Website.

Visit our **Contribute** page of our website to give online at:

<http://sketchclub.org/support-us/>

You can also support the PSC on an ongoing basis when you shop on Amazon. Go to: <http://smile.amazon.com/> and enter the Philadelphia Sketch Club in the Pick your own charitable organization box.

Your support makes it possible for the PSC to continue providing ongoing daily workshops and numerous annual gallery exhibitions.

Like, Link & Share

If you're not following the Philadelphia Sketch Club on Facebook re-tweeting Sketch Club tweets yet, it's time that you did. We have well over 2000 Facebook followers. Get the word out about the Sketch Club. Please click the like button and share your comments and invite your friends to like our page.

Follow @PhilaSketchClub on Twitter, we have almost 400 followers. Please click the heart button and re-tweet our announcements.

Include links on your website, blogs and social media to The Philadelphia Sketch Club to increase traction across social media platforms.

Follow us on Facebook, Twitter and Instagram now!

Thanks to Don Brewer and Michelle Lockamy for managing PSC social media sites.



Member Classifieds

Seeking Framers: Sketch Club members frequently ask about framing services. If you wish to provide framing services to PSC members, please contact the PSC at info@sketchclub.org or call the PSC office: 215 545-92908



Gallery hours: By appointment: Wednesday, Friday, Saturday, Sunday: 1 PM to 5 PM

July 2020

The Portfolio: The newsletter of the Philadelphia Sketch Club is published monthly. Editor, technical support and webmaster: Ken Weiner. Send your member news, announcements and corrections to portfolio@sketchclub.org. The due date for all materials is one week before the end of the month.

Back issues of the Portfolio are available at: <http://sketchclub.org/portfolio-archive/>

Thanks to PSC member volunteer **Ken Weiner** for his ongoing support of Sketch Club technology and communications functions.

The Philadelphia Sketch Club

235 S Camac Street
Philadelphia, PA 19107
(215) 545-9298
<http://sketchclub.org/>
gallerymanager@sketchclub.org
info@sketchclub.org

Gallery Manager: Kaylie Minzola

Officers:

- President: Richard Harrington
- Vice President: Kenneth Weiner
- Secretary: Elise Anzini
- Treasurer: William Patterson

Board of Directors

- Jacqueline Barnett
- Renard Edwards
- Stephen Iwanczuk
- Edward Pluciennik
- Charles F. Tarr
- Gail Williams