

Gallery hours: By appointment: Wednesday, Friday, Saturday, Sunday: 1 PM to 5 PM

June 2020

June 2020



1886: THOMAS EAKINS REMOVES THE LOIN CLOTH FROM THE MODEL AND SHOCKS THE STUDENTS.

Rich Harrington



2020: A STUDENT REMOVES HIS MASK AND SHOCKS THE MODEL.

Look for updated on-line activities in response to COVID-19: Page 2

This Month's Portfolio

Sketch Club Special Events	2
Main Gallery Schedule	5
Stewart Gallery Schedule	7
Sketch Club Activities	8
Sketch Club Open Workshop Schedule	13
Opportunities/Notices	14
Membership	18
Volunteer	19
Support the Sketch Club	20
Member Classifieds	20

Send your member news, announcements and corrections to: portfolio@sketchclub.org. The deadline for ALL submissions is 1-week before the end of the month.

Reminder: It's never too late. You can always renew your membership
You may pay online at <http://sketchclub.org/annual-dues-payment/> or mail your check to:
The Philadelphia Sketch Club
235 S. Camac St.
Philadelphia, PA 19107
For questions please contact the Gallery Manager at 215-545-9298 or email: gallerymanager@sketchclub.org
Late Breaking News – See items that were submitted after the publication date. Go to: <http://sketchclub.org/late-breaking-news/>
The PSC general email is: info@sketchclub

Sketch Club Special Events

The Philadelphia Sketch Club Critique Face Book group



The Philadelphia Sketch Club Critique group on FaceBook is growing and giving members a place to come show their work-in-progress (WIP), critique the other members' works and converse, very much like we normally do at the Club House.

There is a monthly theme but members mostly post open-themed WIP. The May theme is "Spring Awakens". Suggestions are being taken

for the June theme. The variety of work and discussion has been great and is an enjoyable chance to interact with other artists. All active Sketch Club members are welcome to come join:

<https://www.facebook.com/groups/PSCCritique/>

If you have been thinking of joining the Sketch Club, now is a great time to become a member.

<http://sketchclub.org/sample-page/join/>

Take part in monthly challenges to create new artwork based on a new theme each month.

Here's how it works:

- Go to the new group page and request access, which is available to all Club members in good standing.
- Once in the group, post your work and watch as other members post their artwork for the month's composition theme.
- This Facebook Group is private; this means that as members submit their work others are invited to critique each other in a professional and respectful way.
- Make suggestions for new themes and vote for your favorite.

The first theme is "Love in the Time of Pandemic"

Stay well, stay safe and stay creative!

Don Gauger -- Inaugural champion for the online PSC critique.

Sketch Club On-Line Gallery: **Call for Work!**

There's always room for more work: Submit Now!

The Sketch Club is hosting an on-going open gallery at <http://sketchclub.org/sketch-club-open-gallery/>. This gallery is open to PSC members and non-members.

Submit up to 4 images of your work or of yourself working along with a very brief description to portfolio@sketchclub.org.

Include for your work: Your name; Title; size; and medium.

For a photos of yourself include: Who you are and a brief description of the the image.

Sketch Club Special Events

Zoom Workshops

We are planing additional Zoom workshops. Watch for email updates for details.

Previous Sessions:

*Sketch Club Members Zoom Workshop: Friday May 22, 2020, 3:00 – 4:00 PM:
Social Distancing with The Arnolfini Family, 87 years after the initial occurrence
of the Black Plague in Florence.*



Congratulations on the Sketch Club Members' first Zoom Workshop held Friday May 22, 2020, titled "Social

Distancing with The Arnolfini Family, 87 years after the initial occurrence of the Black Plague in Florence." Thanks to Deborah Riccardi for sharing her vast knowledge so enthusiastically with those who attended via Zoom internet conferencing. Thanks also to Ken Weiner for his technical assistance behind the scenes, making it possible for Deborah to give a talk that went very smoothly. It was wonderful to have one of our monthly talks creatively shared with members online while we have the Club house closed to regular activities.

Sketch Club member and Facebook Critique Group monitor **Don Gauger** says: "well done" and I hope we have more online presentations in the months ahead until we can meet once again on Camac Street and toast to each other's good health over the punch bowl.

Sketch Club Special Events

Sheltering in Place, Social Distancing

You are all aware of the myriad closings, cancellations and postponements by all organizations in response to the COVID-19 pandemic. The Sketch Club intends to comply with all required social conventions. For the foreseeable future, we will not be holding any events at the PSC facility.

Our gallery manager, Kaylie, will be working from home during our scheduled hours office hours:

Wednesday and Friday 1 PM to 5 PM. She can be reached by email

at gallerymanager@sketchclub.org. You can also leave messages on the PSC phone: 215-545-9298 and your call will be returned as quickly as possible.



Stay in Touch with On-Line Resources

- The Sketch Club's web site: sketchclub.org
- Our Facebook page: <https://www.facebook.com/thesketchclub/>
- Instagram: <https://www.instagram.com/philadelphiasketch/>
- Twitter: <https://twitter.com/PhilaSketchClub>
- Members: Stay in touch with other PSC colleagues. For contact information, go to the members only page at: <http://sketchclub.org/members-only-2/>. See Stay in touch with current Sketch Club Members in the members section below for instructions.
- Non Sketch Club friends can find a listing of current members names and business websites if they have one at: <http://sketchclub.org/sample-page/current-members-contact-list/>.

Coming Soon

We are currently exploring ways to enhance existing on-line services and to create new opportunities for PSC members to continue to share their work, creative ideas, and resources

- We are creating a monthly Members only Critique on a Members only Facebook page. See next page.
- We will make an on-line gallery for members to display work. Details are still be hammered out. We will notify members of details via email when this site is available

We will notify members of details via email when the new features are available.

Main Gallery Schedule

[See the 2020 Exhibition Schedule](#)
[Important Dates for all PSC Activities](#)

Art of the Flower Exhibition

March 2 – 19

Reception:

Sunday March 15th, 2020, 2:00 –
4:00 PM

Awards and presentation of
the Donald C. Meyer Medal
at 3:00 PM



Image: Doris Peltzman, The Red Kimono

On-line Gallery Still Available:

<http://sketchclub.org/2020-art-of-the-flower-exhibition/> - gallery

Main Gallery Schedule

Coming March 23 – April 30:

Philadelphia Sketch Club's 157th Annual Exhibition of Small Oil Paintings



Matt DeProspero, Got Milk, Oil on panel – Best in Show 2019

This year's exhibition runs from March 23 to April 30, with a reception on April 5 from 2 to 4 PM. Over 150 works by prominent and emerging artists will be on display. This exhibition represents an opportunity for today's artists to connect with many of the great artists of the past. You can have your work exhibited just as Eakins, Anshutz and N. C. Wyeth have.

A History of the Exhibition of Small Oil Paintings

The 157th Annual Exhibition of Small Oil Paintings presented by the Philadelphia Sketch Club represents one of the longest running and most prestigious juried exhibitions in the country. Founded in 1860, the Sketch Club is America's oldest artists club. Originally, the show was founded so that artists could display a number of small examples of their works with the

hope that a patron would order a larger painting. Works can be no larger than 20" x 20" excluding frame.

Awards

In addition to cash awards, the R. Tait McKenzie Small Oils Medal is presented to the First Place winner. Dr. McKenzie was an artist who created Olympic medals, but he was also a physician who developed many of the modern theories of physical therapy. He designed a medal specifically for this exhibition. In addition to the three Best in Show awards, there will also be special awards for the Best Landscape, Still Life, Portrait and Abstract.

Prior medal winners in this exhibition have included Paulette Van Roekens, John Folinsbee, Alice Kent Stoddard, Arthur Meltzer, Antonio Martino, Dorothy Van Loan, Doris Silk, John Redmond and Al Gury.

On-line Gallery Still Available

<http://sketchclub.org/157th-small-oil-paintings-2020/#gallery>

Gallery hours: By appointment: Wednesday, Friday, Saturday, Sunday: 1 PM to 5 PM

June 2020

Main Gallery Schedule

The Workshop Show: May 4 – 28

EXHIBITION CANCELLED DUE TO COVID-19



Stewart Gallery Schedule



**Exhibition space in
the Stewart Gallery
is available for PSC
Members!**

Reserve the gallery by
contacting our
Exhibition Coordinator:
exhibitions@sketchclub.org

The space is \$150 for a
month. Members can
show once in the Stewart
Gallery per year.

[See the 2020 Exhibition Schedule](#)
[Important Dates for all PSC Activities](#)

Sketch Club Activities

Critique Night: TBD

Open to PSC Members and Non-Members

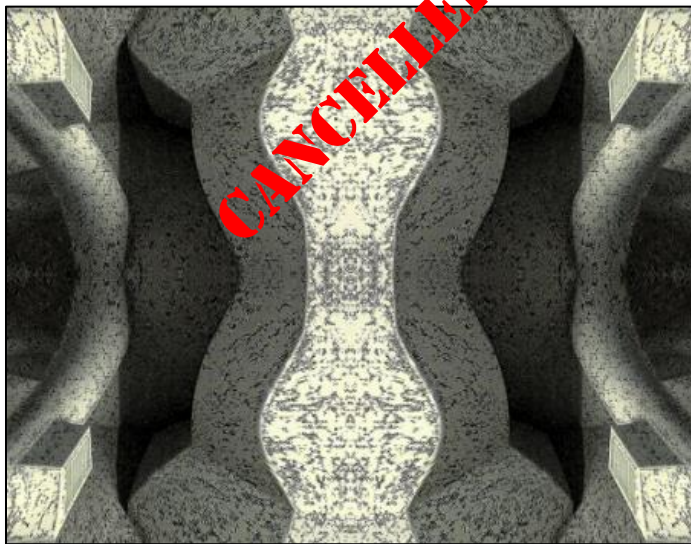
Critique Night is held in the Library of the Sketch Club every third Wednesday beginning at 7 PM. Bring work you have finished, work in progress, or just sketches for work you're planning! Photos, digital work, drawings, all mediums are welcome; we can project digital images on a screen for review, so you have the option to show work that may be too big or too heavy to transport to the Club. There is no one individual directing the critique, just your fellow artists and peers.

Facilitated/monitored by Rich Harrington, PSC President



Thanks to PSC member volunteer **Rich Harrington** for organizing and monitoring this event

Photo Circle: TBD



We will discuss new group activities and possibilities for expansion. The Photo Circle meets every 2nd Thursday at 6:30 PM. You can contact Steve anytime at stphniwan@gmail.com or 215-300-9192 (cell). **Steve Iwanczuk**, Photo Circle Monitor and Member of Philadelphia Sketch Club Board of Directors.

Thanks to PSC member volunteer **Steve Iwanczuk** for organizing and monitoring this event.

Art Natters: Members News

Sketch Club member **Claire Giblin** has work in two virtual exhibitions this month.

The Echo Valley Art Group of Lancaster, PA, presents a virtual First Friday exhibition of Members' Works that virtually opens to the public on June 5, First Friday. You can link to the Echo Valley First Friday presentations here: <https://www.echovalleyartgroup.com/events>



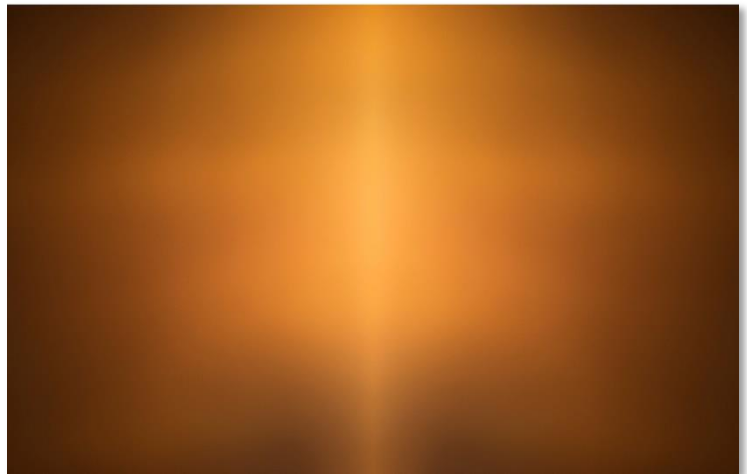
Tamarindo

"Tamarindo", Claire Giblin, ©2007, 39"H x 72"W, acrylic on canvas. Painted after my return from beautiful Punta Mita, Mexico, where tamarind trees are everywhere.

In addition, Demuth Museum and Lancaster Museum of Art hosted a virtual exhibition, "Still Life - Art in the Time of COVID-19", an online exhibition of local artists, reflecting their experiences during the last few months. My photograph is included in the exhibition and was featured this weekend on the Demuth Museum's Instagram Page. Here is the link to the Demuth page of events.:

<http://www.demuth.org/exhibitions-events.html>

"Meditation", 2020 Claire Giblin photograph, archival print on Canon fine art paper, 12"H x 18"W, (edition of 5 prints)



Meditation

Gallery hours: By appointment: Wednesday, Friday, Saturday, Sunday: 1 PM to 5 PM

June 2020

Art Natters: Members News

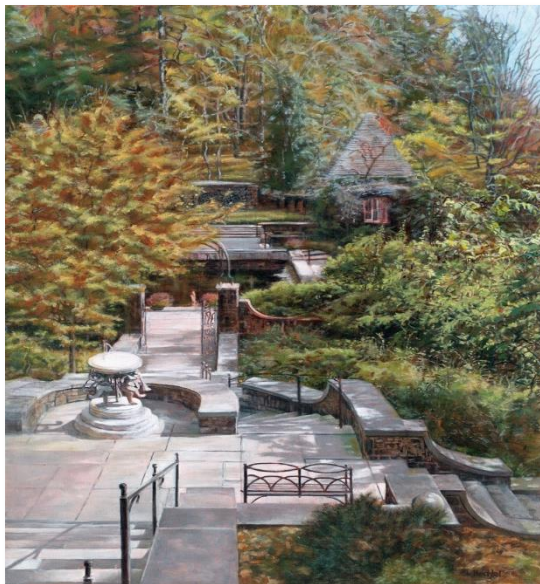
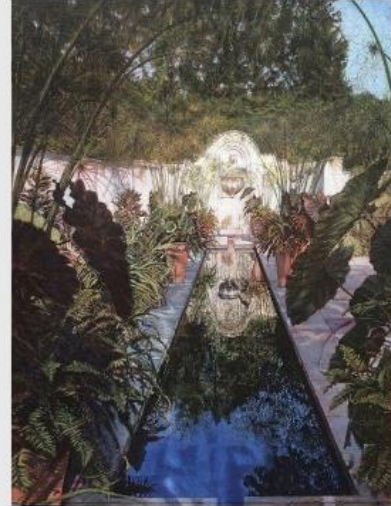
Brenda L Bechtel, Sketch Club member since 2009, sends continued inspired energy! "Papyrus with Elephant Ears ~ Chanticleer" Oil on Linen has captured the eye of Matthew Hargraves, PhD, Chief Curator, Yale Center for British Art and has been given Best in Show, Maxwell Mays Award in Providence Art Club National Open Juried Exhibition 2020. Truly an honor to be given this esteemed named award for which I am profoundly grateful.

Lyme Art Association is opening their Beautiful Connecticut Galleries to the public to host two juried exhibitions June 26; Hudson Valley Art Association 87th National, and LAA "Wind, Waves and Water" Juror of exhibition and Judge of Awards, Russell Kramer, American

Society of Marine Artists (pleased to report I have paintings included in both).

BEST IN SHOW
Maxwell Mays Award
\$1,000

Brenda Bechtel
West Barnstable, MA
Papyrus with Elephant Ears ~
Chanticleer
oil on linen
24" x 18" x 2"
\$8,600



"Tea with H.F. at Three - Winterthur" Oil on Linen

Both CLWAC and AAPL are hosting Members' Art in Juried Virtual Exhibitions, Online. If you have not become to wearisome (hey, a rhyme) of visiting online venues, you can check out my included paintings in afore mentioned venues at my website. Also, I extend an invitation to visit my, newly created instagram which I am really trying to still figure out navigating without an iphone @brenda_l_bechtel and on FB it is brenda.l.bechtel To learn more You can find links at Brenda's website: <http://www.BrendaLBechtel.com>

Art Natters: Members News

From Sketch Club member **Pearl Mintzer**:
Sponsored by Bucks County Herald and River Towns Magazine. There are cash prizes plus being featured in River Towns Magazine and the Bucks Co Herald.

Bucks County Herald Publishing is devoted to helping artists market themselves. There will be a huge opening party with many art-buying VIP's.

UPDATED

River Towns Magazine launches online gallery

Art of the River Towns live exhibition set for October

River Towns Magazine announced that the Art of the River Towns Junied Show will take place October 1-4, at the historic Prallsville Mills in Stockton, N.J. It was originally scheduled to take place in June.

Art lovers and collectors will not have to wait until October to purchase art that will be featured in the show. With the help of show co-chairs Pearl and Chuck Mintzer, River Towns Magazine has launched "The Art of the River Towns Online Sales Gallery." The gallery features hundreds of works by local artists—both those selected for the Junied show, and work submitted by local artists who have accepted River Towns Magazine's invitation to sell their work on the site.

"Our local artists are the heart and soul of the river towns and we didn't want to wait until October to give them a way to earn income from sales," said Joe Wingert, publisher of River Towns Magazine and the Bucks County Herald. "Our artists need our support, especially during this time of great difficulty."

Virginia Rosa, a Buckingham artist whose work was selected to be in the Art of the River Towns Junied Art



"Tricium Polo Player" is by Buckingham artist Virginia Rosa.



"Country Road-Summer" is by Nancy Lloyd, a New Hope artist who has two works for sale on the Art of the River Towns Online Sales Gallery.

Show is glad that the show has gone online. "This would have been the sixth canceled show for me this season," said Rosa. "Having our works seen online like this reminds us of who we are, and will help keep my desire to create new works alive."

The Art of the River Towns Online Sales Gallery can be accessed

through River Towns Magazine's website at rivertownsmagazine.com. New work will continue to be added and sold through October. Artists who wish to submit their work will find instructions on the website.

Michener Art Museum cooks up virtual menu for Foodie Friday

CALL FOR ARTISTS



Red Dusk by Pearl Mintzer. Oil 30"x40"

ART OF THE RIVER TOWNS
JURIED ART SHOW + SALE
PRESENTED BY

RIVER TOWNS
MAGAZINE

JUNE 10 -12

PRALLSVILLE MILLS
STOCKTON | NJ

opening reception: June 10 | 6-9pm

supporting local artists and the prallsville mills artists guild

For information and entry visit
rivertownsmagazine.com

For more information:

<https://rivertownsmagazine.com/>

Art Natters: Members News



Work in progress. Working title:
"Disguise" -Various wood and
paint

From Sketch Club member **Richard Ranck**. This piece in process for show whose date is in the grips of the pandemic. Coincidentally it is about masks!

Sketch Club member **Sheldon Strober's** "The Hermit's Vacation" 36x40", Acrylic on canvas, The image is based on person and a place somewhere in Salem county, NJ



The Hermit's Vacation

The current Covid19 pandemic has presented a number of scheduling challenges, as to if and when to have Salem County's annual Arts Ib Bloom Festival. The following dates differ greatly from that which was originally in place.. A virtual version has been scheduled on Facebook with videos of 20 festival artists May 16 and 17. The actual driving tour through the country towns and Hamlets to visit nearly 30 artists' studios and galleries will take place from 10 to 5pm on Saturday and 11/28 and Sunday, 11/29.

My video includes 9 of my Images which Cover a cross section of my recent paintings, prints and photographs.. The artworks are accompanied by narratives of each art piece and pertinent autobiographical Information. My Gardens, studio

and Gallery will be open to the public during the driving tour all day on Nov. 28 and 29. We welcome you to picturesque Salem county on the Delaware to see the videos and enjoy our art sites, The tour is self guided and free of charge. contact us at – <http://www.artsinbloomnj.com>

Gallery hours: By appointment: Wednesday, Friday, Saturday, Sunday: 1 PM to 5 PM

June 2020

Sketch Club Open Workshop Schedule

All workshops are open to the public. There is no need to register before attending. You do NOT have to be a member of the Philadelphia Sketch Club to participate in the workshops. Our workshops are open to anyone who is interested in drawing, painting or printmaking. All skill levels are welcome. Fees: Model workshops: \$8/session members, \$9/session for non-PSC members; Printmaking workshop: \$10/session; All workshops \$6 for full-time students. Monitored by PSC members.

Life Model	Costumed Model	Printmaking
<p>Mondays – 5, 20, and 40-minute poses 5:30 PM-9:30PM Monitors: Jackie Barnett and Tom Kohlmann</p> <p>Tuesdays – Extended pose: 12:00 PM to 3:00 PM Monitor: Jacqueline Barnett</p> <p>Wednesdays – Extended pose: 6:30 to 9:30 PM Monitor: Vince Docktor</p> <p>Saturdays – Extended pose: 9:30 AM to 12:30 PM Monitor: Vince Docktor</p>	<p>Thursdays Extended pose 12:00 PM to 3:00 PM Monitor: Bob Behne.</p>	<p>Tuesdays 10:00 AM to 2:00 PM Monitor: Elizabeth H. MacDonald</p>

WATCH FOR UPDATES - CANCELLED DUE TO COVID-19

Please Note: Those who use oil paints should bring their own container(s) to remove used solvents. Odorless solvents only.

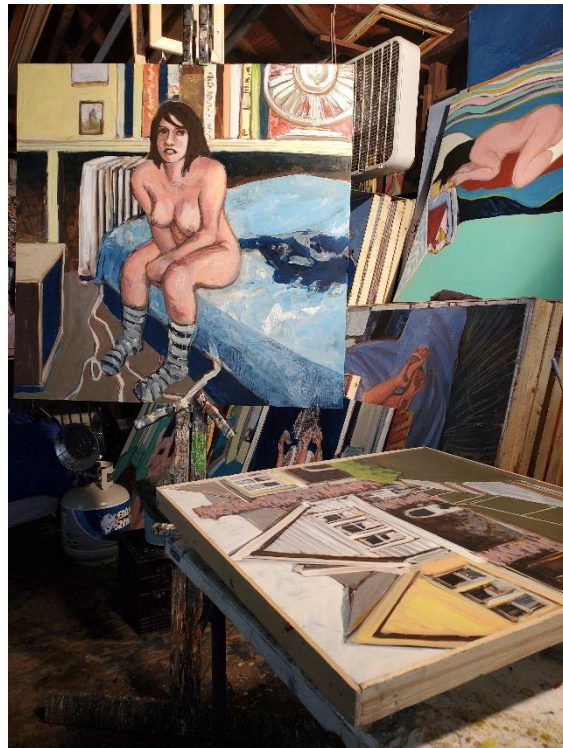
Thank you to all the PSC members who donate their time and expertise to make these workshops available to PSC members and the Philadelphia art community.

Opportunities/Notices

As a courtesy to our non-PSC-member friends, in support of the Philadelphia artist community, we publish your notices, etc., free of charge. However, contributions to the PSC are always welcome. And, we will gladly consider your application for membership

[Contribute to the Sketch Club Here](#) [Apply for PSC Membership Here](#)

Lockdown in the Studio in Doylestown. **David Ohlerking**




Lockdown in the Studio in Doylestown

Opportunities/Notices

Deborah Kruger

*Deborah Kruger's new Video
Welcomes you into her Studio*



*Deborah Kruger's new video takes us into her studio
to discuss her work and process*

Her piece *Conflagration*, is featured at the at the Contemporary Art Museum (CAM) in Raleigh, NC as part of the North Carolina Artists Exhibition. Since the museum is currently closed due to the pandemic, the exhibiting artists have been asked to make videos in lieu of the public artist talks that had originally been planned.

Click here to watch the video:
www.deborahkruger.com

For more updates, like my Facebook page: [Deborah-Kruger](https://www.facebook.com/deborah.kruger)
To follow me on Instagram: [@deborahkrugerstudio](https://www.instagram.com/deborahkrugerstudio)

Forward this email to a friend
www.deborahkruger.com

Deborah's Video:

<https://deborahkruger.com/>

Facebook:

<https://www.facebook.com/deborah.kruger>

Instagram:

<https://www.instagram.com/deborahkrugerstudio>

From **Paul Fuentes**: Here are a couple of new paintings: *The Bridesmaid* and *Maureen*. I hope you like them. They were done recently during these strange coronavirus times.

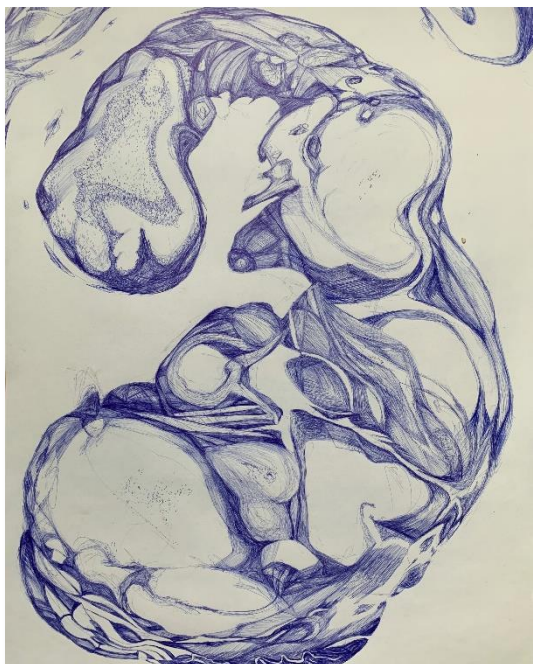
On a side note: I have begun teaching portrait painting classes and love it!



website: <http://artbyfuentes.com>



Kely Vinett just moved to Philly and would love to get involved more in the art scene here. Kelly is a recent graduate from Vassar College. She is preparing for a year of service teaching art through the ArtistYear program in Philadelphia. She works mostly in ballpoint pen and collage, taking inspiration from microscope images of cancer cells.



**Mammalian Muscle Study, 24 x 36 in.,
Bic pen on paper**



Alien Baby, 24 x 36 in., Bic pen on paper



Intestine Madonna, 24 x 36 in., gouache, marker, collage on paper



**Where's Jackson? 24 x 36 in.,
gouache, marker, collage on paper**

Opportunities/Notices

Maureen Drdak's work "Ardens Mundi 4, Tempestatis," has been selected for Pennsylvania's "The Art of the State" exhibition. It is one of 109 selected works from an entry numbering over 2000. The jurors were Lauren Frances Adam(s), Clara Lieu, and Ron Tarver. Exhibition dates are Sunday, September 3 to Sunday, January 3, 2021. The Reception is tentatively scheduled for September 13, 2020.



"Ardens Mundi 4, Tempestatis"

Maureen Drdak

Maureen Drdak. HOME; Recent Work; About the Artist; Other Work; Works on Paper; The Prakriti Project

<http://www.maureendrdak.com>

Pamela Scribner: Galleries and shows have all been cancelled. Lots of time to get an inventory together for when the world opens up again. I've been working on stained glass and am able to sell these items for pickup and shipping.



3D stained glass guitar

Here are a few of my future art inventory and 3 D stained glass guitar.



Sail Boats in the Harbor- colored pencil

Contact Pamela: beagleclub@aol.com

Membership

Stay in touch with current Sketch Club Members

Don't let sheltering in place prevent you from staying in touch with your Sketch Club friends and colleagues. Sketch Club members can access contact information for all current members. Go to the members only page at: <http://sketchclub.org/members-only-2/>. After you log-in with the password sent to you in your acceptance email you can click on the Membership Directory link to access members contact information. Non Sketch Club friends can find a listing of current members along with their websites if they have one at: <http://sketchclub.org/sample-page/current-members-contact-list/>:

Recent New Sketch club Members

- Joseph Cashore

For a complete listing of Sketch Club members, go to: <http://sketchclub.org/sample-page/current-members-contact-list/>

Not a PSC Member?: Join Now!

If you're reading this edition of the Portfolio and you're not a member of the PSC, you should consider joining the more than 200 other Philadelphia area artists who have. The PSC is one of the most active visual art venues serving center city Philadelphia. The PSC is a hands-on organization that offers its members the opportunity to participate in all aspects of creating and presenting work to the public. It presents over 20 scheduled group and solo exhibitions annually and offers a wide range of daily workshops. [Get info and an application here.](#)

If you are a member of the PSC, please feel free to share the Portfolio with your artist friends and encourage them to become members.

Membership Renewal

You can check the status of your membership by going to the Current Members page on the PSC web-site: <http://sketchclub.org/sample-page/memberspace/>. All current members are listed. An asterisk (*) means that the membership has expired but is within the 60-day grace period for renewal. Names in red are active links to the individual's web site.

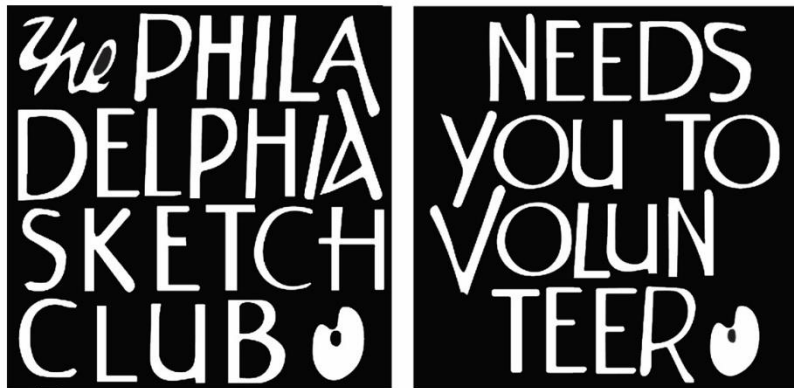
Renew Now! <http://sketchclub.org/annual-dues-payment/>

If you have any questions about your membership, please don't hesitate to contact us at membership@sketchclub.org or call the office: 215-545-9298.

Volunteer

Be an Active Sketc Club Member; Volunteer!!

The Philadelphia Sketch Club is managed entirely by volunteers except for the gallery manager, housekeeping, and bookkeeper.



The PSC always needs volunteer members. Volunteering is one of the most important aspects of being a Sketch Club member and it is the one of the best ways to take advantage of the PSC. You'll be working with colleagues who share the same interests and helping the PSC provide unique services to the visual arts community. Sign up for an activity today.

Here are some of the activities that volunteers perform:

- Chair exhibitions
- Assist in hanging exhibitions
- Covering exhibition drop-offs and pick-ups
- Monitor workshops
- Assist with presentations
- Serve on the Board of Directors
- Serve as Key Circle volunteers
- Publish the Portfolio
- Manage the PSC web site
- Gallery coverage
- Graphics for Portfolio, PSC web site, social media
- Assist in every aspect of managing the club and providing member services

To get involved, contact:

Jackie Barnett

Volunteer Coordinator

Philadelphia Sketch Club

jbarnett12@verizon.net

Support the Sketch Club

Contribute

Please consider making your tax-deductible contribution now. These funds will be put to good use providing enhanced services to our members and friends.

Membership dues cover only a small portion of the PSC's operating expenses. Competition for funding for arts organizations like the Sketch Club is increasingly competitive and total funding for the arts is shrinking. Your additional support will keep the PSC an active support for visual artists in the Metropolitan Philadelphia area. The Philadelphia Sketch Club is an IRS designated 501(c) (3) non-profit organization.

You can call the office at 215-545-9298, mail checks to the Sketch Club or visit the Contribute page of our Website.

Visit our **Contribute** page of our website to give online at:

<http://sketchclub.org/support-us/>

You can also support the PSC on an ongoing basis when you shop on Amazon. Go to:

<http://smile.amazon.com/> and enter the Philadelphia Sketch Club in the Pick your own charitable organization box.

Your support makes it possible for the PSC to continue providing ongoing daily workshops and numerous annual gallery exhibitions.

Like, Link & Share

If you're not following the Philadelphia Sketch Club on Facebook re-tweeting Sketch Club tweets yet, it's time that you did. We have well over 2000 Facebook followers. Get the word out about the Sketch Club. Please click the like button and share your comments and invite your friends to like our page.

Follow @PhilaSketchClub on Twitter, we have almost 400 followers. Please click the heart button and re-tweet our announcements.

Include links on your website, blogs and social media to The Philadelphia Sketch Club to increase traction across social media platforms.

Follow us on Facebook, Twitter and Instagram now!

Thanks to Don Brewer and Michelle Lockamy for managing PSC social media sites.



Member Classifieds

Seeking Framers: Sketch Club members frequently ask about framing services. If you wish to provide framing services to PSC members, please contact the PSC at info@sketchclub.org or call the PSC office: 215 545-92908



Gallery hours: By appointment: Wednesday, Friday, Saturday, Sunday: 1 PM to 5 PM

June 2020

The Portfolio: The newsletter of the Philadelphia Sketch Club is published monthly. Editor, technical support and webmaster: Ken Weiner. Send your member news, announcements and corrections to portfolio@sketchclub.org. The due date for all materials is one week before the end of the month.

Back issues of the Portfolio are available at: <http://sketchclub.org/portfolio-archive/>

Thanks to PSC member volunteer **Ken Weiner** for his ongoing support of Sketch Club technology and communications functions.

The Philadelphia Sketch Club

235 S Camac Street
Philadelphia, PA 19107
(215) 545-9298
<http://sketchclub.org/>
gallerymanager@sketchclub.org
info@sketchclub.org

Gallery Manager: Kaylie Minzola

Officers:

- President: Richard Harrington
- Vice President: Kenneth Weiner
- Secretary: Elise Anzini
- Treasurer: William Patterson

Board of Directors

- Jacqueline Barnett
- Renard Edwards
- Stephen Iwanczuk
- Edward Pluciennik
- Charles F. Tarr
- Gail Williams