



Don Gauger

## Look for updated on-line activities in response to COVID-19: Page 2

### This Month's Portfolio

|                                    |    |
|------------------------------------|----|
| Sketch Club Special Events         | 2  |
| Main Gallery Schedule              | 5  |
| Stewart Gallery Schedule           | 7  |
| Sketch Club Activities             | 8  |
| Sketch Club Open Workshop Schedule | 16 |
| Opportunities/Notices              | 17 |
| Membership                         | 22 |
| Volunteer                          | 23 |
| Support the Sketch Club            | 24 |
| Member Classifieds                 | 24 |

Send your member news, announcements and corrections to: [portfolio@sketchclub.org](mailto:portfolio@sketchclub.org). The deadline for ALL submissions is 1-week before the end of the month.

Reminder: It's never too late. You can always renew your membership

You may pay online at <http://sketchclub.org/annual-dues-payment/> or mail your check to:

The Philadelphia Sketch Club  
235 S. Camac St.  
Philadelphia, PA 19107

For questions please contact the Gallery Manager at 215-545-9298 or email:

[gallerymanager@sketchclub.org](mailto:gallerymanager@sketchclub.org)

Late Breaking News – See items that were submitted after the publication date. Go to:

<http://sketchclub.org/late-breaking-news/>

The PSC general email is: [info@sketchclub.org](mailto:info@sketchclub.org)

## Sketch Club Special Events

### Sheltering in Place, Social Distancing

You are all aware of the myriad closings, cancellations, and postponements by all organizations in response to the COVID-19 pandemic. The Sketch Club intends to comply with all required social conventions. For the foreseeable future, we will not be holding any events at the PSC facility.

Our gallery manager, Kaylie, will be working from home during our scheduled hours office hours:

Wednesday and Friday 1 PM to 5 PM. She can be reached by email

at [gallerymanager@sketchclub.org](mailto:gallerymanager@sketchclub.org). You can also leave messages on the PSC phone: 215-545-9298 and your call will be returned as quickly as possible.



### Stay in Touch with On-Line Resources

- The Sketch Club's web site: [sketchclub.org](http://sketchclub.org)
- Our Facebook page: <https://www.facebook.com/thesketchclub/>
- Instagram: <https://www.instagram.com/philadelphiasketch/>
- Twitter: <https://twitter.com/PhilaSketchClub>
- Members: Stay in touch with other PSC colleagues. For contact information, go to the members only page at: <http://sketchclub.org/members-only-2/>. See Stay in touch with current Sketch Club Members in the members section below for instructions.
- Non Sketch Club friends can find a listing of current members names and business websites if they have one at: <http://sketchclub.org/sample-page/current-members-contact-list/>.

### Coming Soon

We are currently exploring ways to enhance existing on-line services and to create new opportunities for PSC members to continue to share their work, creative ideas, and resources

- We are creating a monthly Members only Critique on a Members only Facebook page. See next page.
- We will make an on-line gallery for members to display work. Details are still be hammered out. We will notify members of details via email when this site is available

We will notify members of details via email when the new features are available.

## Sketch Club Special Events

### The Philadelphia Sketch Club Critique Face Book group



Calling all Sketch Club Members:

Take part in monthly challenges to create new artwork based on a new theme each month. Join us online at the "Philadelphia Sketch Club Critique"-- a Closed group for Active members only on Facebook. You can also find a link on our website and on the PSC's main Facebook page. Basically, the plan works like this:

\* Active members go to the new "Philadelphia

Sketch Club Critique" page and request access, which is available to all Club members in good standing.

- Once in post your work and watch as other members' post their artwork for that month's composition theme.
- This Facebook Group is private; this means that as Members submit their work others are invited to critique each other in a professional and respectful way.
- Make suggestions for new themes and vote for your favorite.
- More details will be posted within the group including the option to be considered for a monthly "Highlights", a curated online gallery to be published on our external site/Instagram/Twitter channels.

Colleagues, please join in and contribute to your online art community. We all miss the camaraderie we enjoy at the Club house. The "Philadelphia Sketch Club Critique" is a chance to get together online until we can gather once more around the punch bowl and raise a toast, "o the Sketch Club, past, present and future."

Stay well, stay safe and stay creative!

Don Gauger -- inaugural champion for the online PSC critique.

### Call for Model Workshop Opportunity

I was chatting online with a non-member who was interested in our "Philadelphia Sketch Club Critique" group and she asked an interesting question, "Does anyone know of an online model-pose workshop opportunity?" I would suppose costume modeling would not be too hard to do online. Please send me information if you know of an online model workshop. Perhaps someone would like to organize an online PSC costume-modeling workshop? -- Don Gauger

**Response:** Thanks to member **John Deitz** the "Philadelphia Sketch Club Critique" group got an answer our call. Here are three resources John suggests for online workshops that can easily be found searching on the Internet:

- Croquiscafe has short poses that build to a single 5 min pose weekly. Video recording. Photos available
- Line of Action offers timed sessions building from short to long poses. Still shots. You select session duration. Conducted by artists this emulates life sessions well.
- Cecelia Shaw has short building to long pose, live video sessions as well as remote control camera.

-- Don Gauger



## Sketch Club Special Events

### Upcoming Zoom Annual Members Meeting

The Philadelphia Sketch Club's postponed required annual meeting will be held in October. Details about Zoom access, dates and the agenda will be distributed to all current PSC members in mid-September.

### Sketch Club On-Line Gallery: **Call for Work!**

#### **There's always room for more work: Submit Now!**

The Sketch Club is hosting an on-going open gallery at <http://sketchclub.org/sketch-club-open-gallery/>. This gallery is open to PSC members and non-members.

Submit up to 4 images of your work or of yourself working along with a very brief description to [portfolio@sketchclub.org](mailto:portfolio@sketchclub.org).

Include for your work: Your name; Title; size; and medium.

For a photos of yourself include: Who you are and a brief description of the the image.

### Zoom Workshops



We are planning additional Zoom workshops. Watch for email update for details here and at: [sketchclub.org](http://sketchclub.org)

Gallery hours: By appointment: Wednesday, Friday, Saturday, Sunday: 1 PM to 5 PM

September 2020

## Main Gallery Schedule

[See the 2020 Exhibition Schedule](#)  
[Important Dates for all PSC Activities](#)

Art of the Flower Exhibition  
March 2 – 19

### Reception:

Sunday March 15th, 2020, 2:00 –  
4:00 PM

Awards and presentation of  
the Donald C. Meyer Medal  
at 3:00 PM



Image: Doris Peltzman, The Red Kimono

**On-line Gallery Still Available:**

<http://sketchclub.org/2020-art-of-the-flower-exhibition/> - gallery

## Main Gallery Schedule

See the On-line Exhibition and Awards

Philadelphia Sketch Club's 157th Annual Exhibition of Small Oil Paintings

Updated: See the awards here: [157th Small Oil Paintings Awards](#)



Matt DeProspero, Got Milk, Oil on panel – Best in Show 2019

This year's exhibition runs from March 23 to April 30, with a reception on April 5 from 2 to 4 PM. Over 150 works by prominent and emerging artists will be on display. This exhibition represents an opportunity for today's artists to connect with many of the great artists of the past. You can have your work exhibited just as Eakins, Anshutz and N. C. Wyeth have.

### A History of the Exhibition of Small Oil Paintings

The 157th Annual Exhibition of Small Oil Paintings presented by the Philadelphia Sketch Club represents one of the longest running and most prestigious juried exhibitions in the country. Founded in 1860, the Sketch Club is America's oldest artists club. Originally, the show was founded so that artists could display a number of small examples of their works with the

hope that a patron would order a larger painting. Works can be no larger than 20" x 20" excluding frame.

### Awards

In addition to cash awards, the R. Tait McKenzie Small Oils Medal is presented to the First Place winner. Dr. McKenzie was an artist who created Olympic medals, but he was also a physician who developed many of the modern theories of physical therapy. He designed a medal specifically for this exhibition. In addition to the three Best in Show awards, there will also be special awards for the Best Landscape, Still Life, Portrait and Abstract.

Prior medal winners in this exhibition have included Paulette Van Roekens, John Folinsbee, Alice Kent Stoddard, Arthur Meltzer, Antonio Martino, Dorothy Van Loan, Doris Silk, John Redmond and Al Gury.

**On-line Gallery Still Available**

<http://sketchclub.org/157th-small-oil-paintings-2020/#gallery>

Gallery hours: By appointment: Wednesday, Friday, Saturday, Sunday: 1 PM to 5 PM

September 2020

## Main Gallery Schedule

The Workshop Show: May 4 – 28

**EXHIBITION CANCELLED DUE TO COVID-19**



## Stewart Gallery Schedule



**Exhibition space in  
the Stewart Gallery  
is available for PSC  
Members!**

Reserve the gallery by  
contacting our  
Exhibition Coordinator:  
[exhibitions@sketchclub.org](mailto:exhibitions@sketchclub.org)

The space is \$150 for a  
month. Members can  
show once in the Stewart  
Gallery per year.

[See the 2020 Exhibition Schedule](#)  
[Important Dates for all PSC Activities](#)



## Sketch Club Activities

### Critique Night: TBD

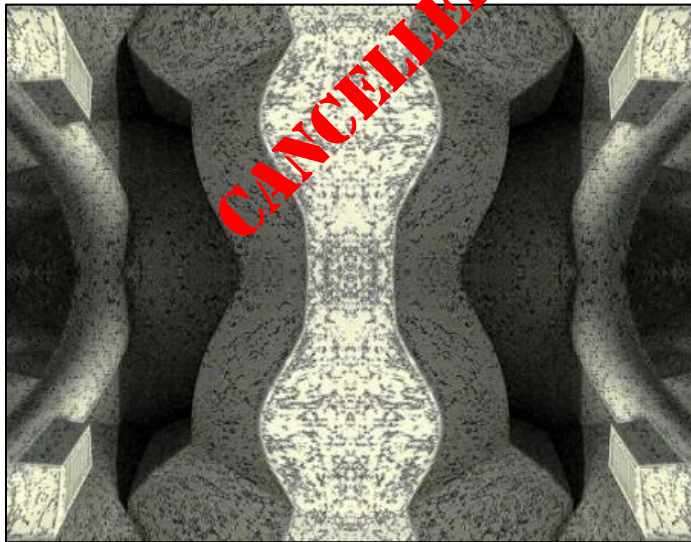
Open to PSC Members and Non-Members

Critique Night is held in the Library of the Sketch Club every third Wednesday beginning at 7 PM. Bring work you have finished, work in progress, or just sketches for work you're planning! Photos, digital work, drawings, all mediums are welcome; we can project digital images on a screen for review, so you have the option to show work that may be too big or too heavy to transport to the Club. There is no one individual directing the critique, just your fellow artists and peers. Facilitated/monitored by Rich Harrington, PSC President



Thanks to PSC member volunteer **Rich Harrington** for organizing and monitoring this event

### Photo Circle: TBD



We will discuss new group activities and possibilities for expansion. The Photo Circle meets every 2<sup>nd</sup> Thursday at 6:30 PM. You can contact Steve anytime at [stphniwan@gmail.com](mailto:stphniwan@gmail.com) or 215-300-9192 (cell). **Steve Iwanczuk**, Photo Circle Monitor and Member of Philadelphia Sketch Club Board of Directors.

Thanks to PSC member volunteer **Steve Iwanczuk** for organizing and monitoring this event.



## Art Natters: Members News

### About the Banner Artist: Don Gauger

Don Gauger first came to the Sketch Club in 1990 with Arthur Pielli as guests of long-time member Jack Crowley. A year later he was on the Club's board and eventually served as Vice-President during Betty MacDonald's presidency. His proudest achievement was designing, creating, and branding the original sketchclub.org and Facebook pages; today he is the inaugural champion of the Club's FB Critique group. Some years he is worn an antique tux with tails for the annual Holiday dinner and Purity League auction.

Don Gauger is writing a novella and wishes he had more time at his easel. Plein air landscape painting is his favorite art event. Digital photography with/without post-production manipulation is his quick art fix. His other profession is technical, first in research at DuPont, then shifting to IT at the advent of the Internet. His is currently a senior consulting-technical writer.

From Sketch Club member **Gayle Joseph.**



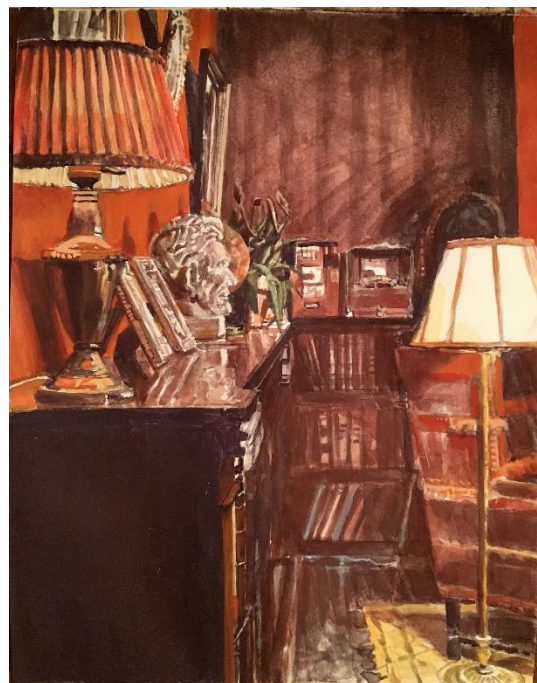
**Black Cat named Burly. Watercolor**



**Fruit painting—Pandemic Distraction. Watercolor**

## Art Natters: Members News

**Brenda L Bechtel**, Sketch Club member since 2009, continues to navigate through the continuously changing Exhibition guidelines in the Art World (during this covid thing). As "rules & requirements" evolve, patience and perseverance are paramount! We all need a strong constitution during these times. I send steady Inspiration and continued support to All Lovers of Creativity! As I continue to share my Art, there are a few shows I would like to share; some ongoing, a few new, a couple reinvented by the venues. Continuing through October 31, American Artists Professional League Member Exhibit 2020, \*Awarded First Place Watermedia for "Cherished" by Judge of Awards, Sheldon Marks. Allied Artists of America 107th National Exhibition ongoing through September 1, 2021. Allied Artists of America Associate Members Exhibit continues through April 15, 2022. New Live Shows, Yes LIVE, on a Wall, Installed a Gallery with Good Lighting and Real People (no cardboard cutouts).



A work in progress "my Experiment in Casein"

Providence Art Club has invited my \*Best in Show, Maxwell Mays Award painting (Judge Matthew Hargraves, PhD, Chief Curator, Yale Center for British Art) from the PAC National Exhibition to be included in the 2020 Fall Member Exhibition (Judge, Victoria Gao) ON VIEW August 31 through September 18, 2020. New Haven Paint & Clay Club Active Elected Artist Exhibition will be graciously hosted by Lyme Academy of Fine Art, Sill House Gallery in Old Lyme CT (Judge, Michael Viera) ON VIEW September 2 - 30, 2020. Cambridge Art Association Fall Salon in Honor of Mary Schein (Judges include the Schein Family) ON VIEW September 9 - 30, 2020 with a zoom opening reception with Awards scheduled September 10, 6:30 - 7:30.

New Hampshire Art Association 34th Omer T Lassonde National Exhibition, "Travels Near and Far" previously scheduled to take place at the Robert Lincoln Levy Gallery in Portsmouth NH April 1 - 26, 2020 has been reinvented and will now be presented exclusively in an online Gallery on the NHAA website September 18 - October 16, 2020. Keep on Pushin' that Puddle of PAINT! <http://www.BrendaLBechtel.com>



## Art Natters: Members News

Forced lockdowns definitely promote creativity. All of the sketches, photographs, and simmering ideas finally have a chance to emerge. These are a few of the paintings and drawings that I have completed over the course of the past five months. My interest in dramatic light, shadow, and composition is evident in each piece.

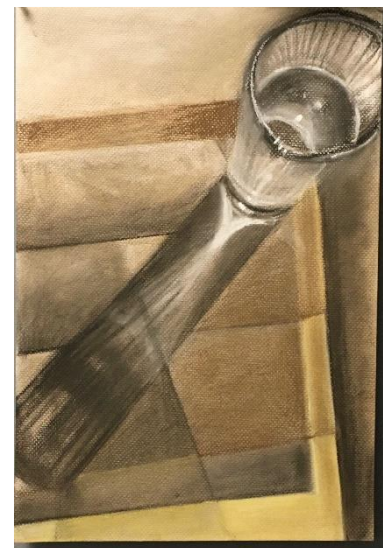


**Floodwaters, 12 x 18 Watercolor 100**

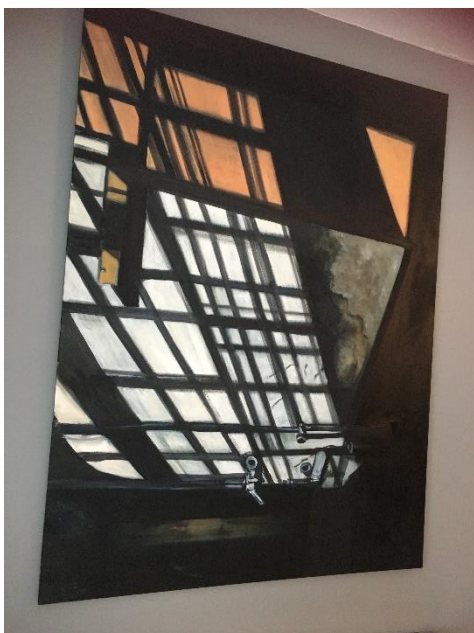
And when my decade old website no longer functioned, I had the time to take my new paintings, along with my previous portfolio of work, into a new website, Wix. It was easier to use than most other platforms and they provide exceptional support.

During the pandemic, I also learned to teach drawing through Zoom technology for

Temple University's OLLI classes. Using live discussion, PowerPoint examples, and original video demonstrations, students were encouraged to submit and share their drawing assignments to a digital album. A virtual critique, with comments from all participants, encouraged dialogue and discussion among the members of the class.



**Glass Pastel**



**Lock Down, 36 x 48, Oil**

Sketch Club member **Joann Neufeld**

[joannneufeld.com](http://joannneufeld.com)

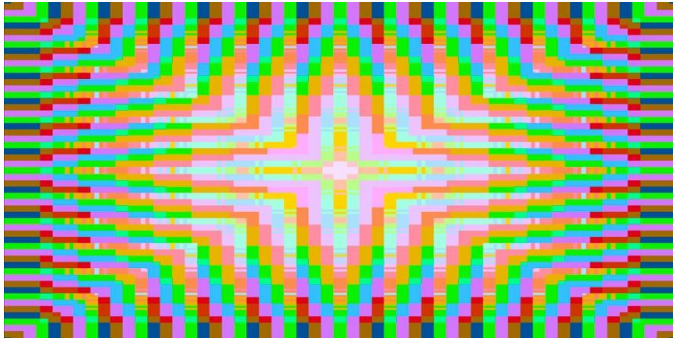


**Pandemic View, 16 x 20 Oil 100**

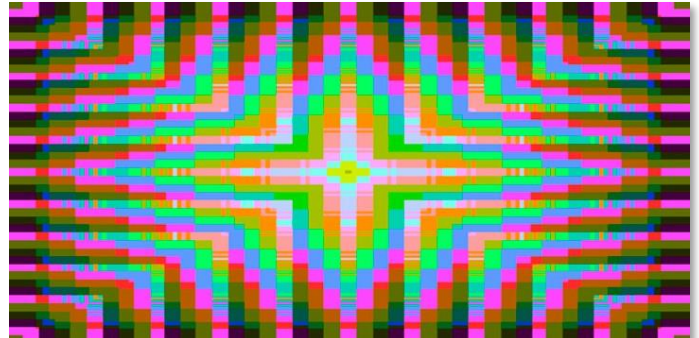


## Art Natters: Members News

Sketch Club member **Nancy Herman** says: in order to see if music translated to color would maintain its essential structure if it were changed into a different key, in the same way that music does, has translated eight measures of CLAIRES DE LUNE with a set of tuned colors, with C as red and then with a set of tuned colors with C as green. This is the result.



C is Red



C is Green

Sketch Club member **Sheldon Strober's** artistic output over the last few years has been ever-changing in terms of input of content, created imagery, media, and message. It has ranged from the various areas of printmaking, to painting, to photography, and back to painting. It has embraced graphic naturalism, and progressed through various shades of abstraction. While various works are clearly realistic, others are metaphorical, and many are simply compositions of color and form. The output can be assigned to six different categories, and may involve realism, metaphor and abstraction: The main categories are: landscape paintings, seascape paintings, (automatism) prints, print paintings, a window series, and paintings based on the number "9".



"Catching the Seasons"

Please enjoy this evolution of my artistic thinking and expression in the wake of personal and drastic universal change.

"Catching the Seasons" at Gallery 50  
in Bridgeton, NJ for the month of October.

## Art Natters: Members News

### HAMPTONS VIRTUAL ART FAIR

Su Knoll Horthy  
is exhibiting with  
Bluestone Fine Art Gallery

VIP Sneak Preview  
July 23-26  
(You are a VIP)

Art Fair  
September 2-7

Register  
hamptonsvirtualartfair.com  
or visit  
Hamptons Virtual Art Fair on Instagram

Sketch Club member **Su Knoll Horthy** writes:

Bluestone Fine Art Gallery in Old City Philadelphia is pleased to announce their participation in the Hamptons Virtual Art Fair (HVAF), featuring Post-war and Contemporary art. HVAF is the new digital intuitive for Summer Hamptons 2020 that takes the place of a physical art fair.

This state-of-the-art Virtual Reality platform can be viewed from anywhere in the world from Sep. 2 – Sep. 7, 2020, with a special live VIP Sneak Preview July 23-26. The exhibition may also be viewed in person, by appointment, at Bluestone Fine Art Gallery at 72 N 2nd Street, Philadelphia, PA. Established in 2011 by Pam Regan, Bluestone Fine Art Gallery features original works of art by contemporary artists.

During the Hamptons Virtual Art Fair, Bluestone is proud to be exhibiting gallery artists, Stephen Cimini, Chris Cox, Stuart Dunkel, Jeff Erickson, Ekaterina Ermilkina, Su Knoll Horthy, and Nancy Neill. According to gallery owner Pam Regan, “We work closely with collectors, designers, and architects, helping clients select the art best suited for residences, businesses and other venues across the country. Our goal is to always showcase the most engaging works.”



Color Pops, Beautiful Transients 2, Oil & graphite on canvas, 24x24in.,  
\$1,200.00,

<https://www.hamptonsvirtualartfair.com/bluestone-fine-art-gallery-philadelphia-pa/>



## Art Natters: Members News

From Sketch Club member **Tom Furey**. We are living in very unusually times. Our world does not seem real and is very unsorted. It is extremely difficult to organize our calendar, thoughts or put together any plans. It is a good thing we have each other to make some sense of it all.



Theresa's Bounty, Medium: Oil on Linen, Size: 11 x 14"

Sometimes life hands us situations, and we are not truly prepared. I have not left my Home/Studio since March 6th. Most normal people would think "How Horrible", but this gave me a wonderful opportunity to JUST PAINT! No running to meetings, Gallery visits, Shows or Exhibits. No pick ups, drop offs, or opening receptions. Not even prescription pick up or food shopping, thanks to community and family loving services ;) JUST PAINT!

After all we are in this surreal bag of whatever together. Life is worth living and Art is worth creating to express these feelings. With all that in mind I painted this new creation. My daughter Theresa May, who lives in the UK, is a world class Photographer and Gardener . She took a series of photos for me to work with for a painting composition. I though the BEETS in a BAG I choose reflected our current life situation.

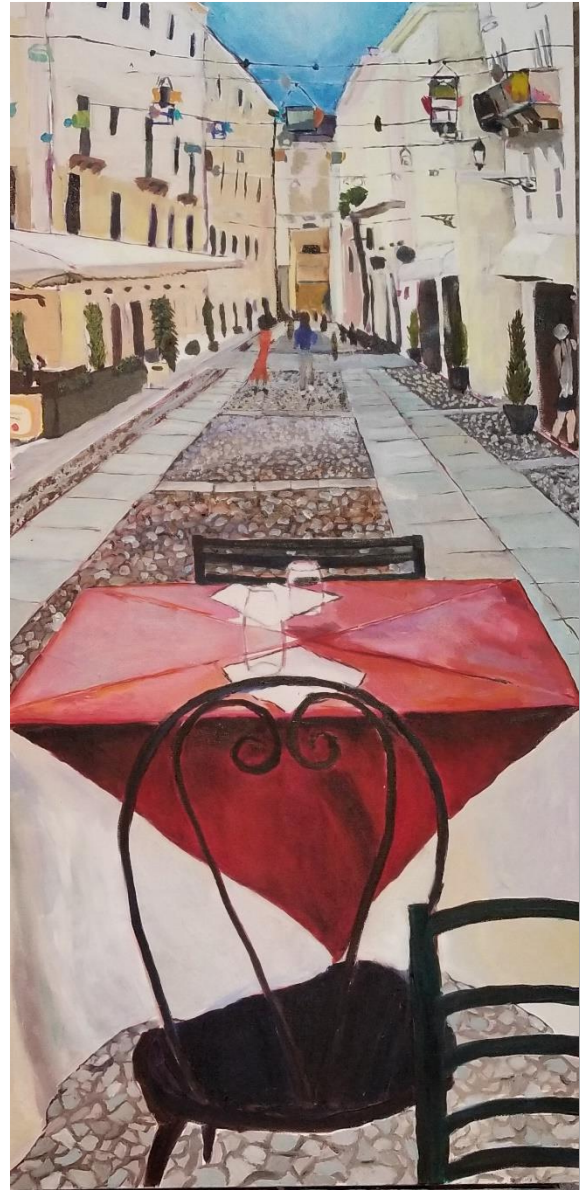


Gallery hours: By appointment: Wednesday, Friday, Saturday, Sunday: 1 PM to 5 PM

September 2020

## Art Natters: Members News

Sketch Club member **Tracey Landmann** will be exhibiting scenes of southern Europe, featuring Italy, throughout the month of September at: Toscana, 1412 N DuPont st., Wilmington, DE.



Ready, Set, Mangia!

Gallery hours: By appointment: Wednesday, Friday, Saturday, Sunday: 1 PM to 5 PM

September 2020

## Sketch Club Open Workshop Schedule

All workshops are open to the public. There is no need to register before attending. You do NOT have to be a member of the Philadelphia Sketch Club to participate in the workshops. Our workshops are open to anyone who is interested in drawing, painting or printmaking. All skill levels are welcome. Fees: Model workshops: \$8/session members, \$9/session for non-PSC members; Printmaking workshop: \$10/session; All workshops \$6 for full-time students. Monitored by PSC members.

| Life Model   | Costumed Model   | Printmaking   |
|--|--|---|
| <p>Mondays – 5, 20, and 40-minute poses 5:30 PM-9:30PM<br/>Monitors: Jackie Barnett and Tom Kohlmann</p> <p>Tuesdays – Extended pose: 12:00 PM to 3:00 PM<br/>Monitor: Jacqueline Barnett</p> <p>Wednesdays – Extended pose: 6:30 to 9:30 PM<br/>Monitor: Vince Docktor</p> <p>Saturdays – Extended pose: 9:30 AM to 12:30 PM<br/>Monitor: Vince Docktor</p> | <p>Thursdays<br/>Extended pose<br/>12:00 PM to 3:00 PM<br/>Monitor: Bob Bohne.</p> | <p>Tuesdays<br/>10:00 AM to 2:00 PM<br/>Monitor:<br/>Elizabeth H. MacDonald</p> |

**WATCH FOR UPDATES - CANCELLED DUE TO COVID-19**

Please Note: Those who use oil paints should bring their own container(s) to remove used solvents. Odorless solvents only.

Thank you to all the PSC members who donate their time and expertise to make these workshops available to PSC members and the Philadelphia art community.

Gallery hours: By appointment: Wednesday, Friday, Saturday, Sunday: 1 PM to 5 PM

September 2020

## Opportunities/Notices

As a courtesy to our non-PSC-member friends, in support of the Philadelphia artist community, we publish your notices, etc., free of charge. However, contributions to the PSC are always welcome. And, we will gladly consider your application for membership

[Contribute to the Sketch Club Here](#)   [Apply for PSC Membership Here](#)

### Larry Francis Show " Morning Into Night "

At:

SOMA New Art Gallery  
Carpenter Square Mall  
31 Perry Street  
Cape May N.J. 08204

September 19<sup>th</sup> — November 1st



"Dreaming" oil on canvas 30" x 42"



## Opportunities/Notices

### J O S E P H S W E E N E Y FINE ART

#### Plein Air Painting in Bermuda - From Home! (ONLINE) PT 605BM\_ON with Joseph Sweeney

\$225

[Register](#)

**Register by August 31 for a 10% Early Bird Discount! Enter promo code EARLYBIRDFALL2020 at checkout (be sure to click the + symbol)**

Working from photographs of sunny Bermuda supplied by instructor Joseph Sweeney, learn how to paint from photo references in preparation for working outdoors. Topics include the basics on choosing a prime location, reading the weather and light at a particular time of day, and setting up a landscape palette. Drawing, composition, and color will be emphasized. Instruction is geared towards oil, acrylic, and pastel, but experienced watercolorists are welcome.

Materials List : [Sweeney PT 605BM\\_ON](#)

[Zoom Technical Requirements](#)

[CE Policy Guide Fall 2020](#)

Image:

Winslow Homer (1836-1910), *North Road, Bermuda*, 1900, Watercolor and graphite on white wove paper, 13 15/16 x 21 in. (35.40125 x 53.34 cm.), collection of the Pennsylvania Academy of the Fine Arts, accession # 1978.19, Partial Gift and Bequest of Bernice McIlhenny Wintersteen

Sep 17 - Oct 22nd, 2020

**Thu** for 6 weeks from **10:00 - 11:30 am**



**Spanish Point, Bermuda - Oil on Museum Board**

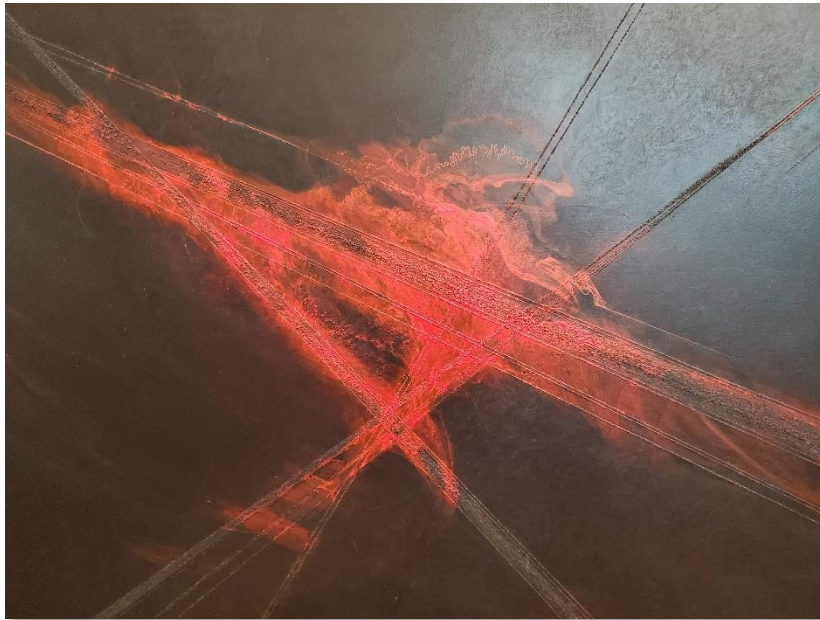
## Opportunities/Notices

Maureen Drdak,

PAFA BFA 1975. "RUDRA", acrylic and mineral particles on wood panel. 48 X

72 X 2 INCHES.

EXHIBITED IN "Poised and Forceful" at Park Towne Place, Philadelphia, now until mid-December.



RUDRA

<https://inliquid.org/exhibitions/poised-and-forceful/>

## Opportunities/Notices

Upcoming watercolor classes with master botanical artist, **Robby Schlesinger**. Weekly Zoom group classes with one-on-one feedback and support between classes.



Glorisa Lily

Botanical Watercolor Painting - Learn to paint stunning botanical works in the French court tradition. In this zoom class you will learn to create vibrant realistic flower portraits using classic watercolor techniques. This class is open to all levels, but some drawing experience is recommended.

Wednesdays - 6:30 to 8:30pm

Visit [artistrobby.com](http://artistrobby.com) to contact Robby to register.

4 Zoom classes \$150

Landscape Watercolor Painting - Learn the various techniques for painting beautiful landscapes in watercolor: wet-in-wet, dry-brush, washes, and how to handle mixing paints for realistic scenes. This class is for absolute beginners or those with just a little watercolor experience.

Thursdays - 6:30 to 8:30pm

Visit [artistrobby.com](http://artistrobby.com) to contact Robby to register.

4 Zoom classes \$150



Tulips\_v1



## Opportunities/Notices

**Timothy Stanford** of Perceiving Light recently started a YouTube Channel. Be sure to subscribe for new time-lapse videos every Tuesday and Friday! Each week features a different theme and genre of music, including classical guitar/piano, rock, jazz, and more. Whatever your preference is, you're sure to find something enjoyable on the Perceiving Light Channel!

So, what are you waiting for? Subscribe today!



<https://www.youtube.com/channel/UCxAAXmplwK-41XLjzG7HMrg>

## Membership

### Stay in touch with current Sketch Club Members

Don't let sheltering in place prevent you from staying in touch with your Sketch Club friends and colleagues. Sketch Club members can access contact information for all current members. Go to the members only page at: <http://sketchclub.org/members-only-2/>. After you log-in with the password sent to you in your acceptance email you can click on the Membership Directory link to access members contact information. Non Sketch Club friends can find a listing of current members along with their websites if they have one at: <http://sketchclub.org/sample-page/current-members-contact-list/>:

### Recent New Sketch club Members

- Not a member? Your name should be here!

For a complete listing of Sketch Club members, go to: <http://sketchclub.org/sample-page/current-members-contact-list/>

### Not a PSC Member?: Join Now!

If you're reading this edition of the Portfolio and you're not a member of the PSC, you should consider joining the more than 200 other Philadelphia area artists who have. The PSC is one of the most active visual art venues serving center city Philadelphia. The PSC is a hands-on organization that offers its members the opportunity to participate in all aspects of creating and presenting work to the public. It presents over 20 scheduled group and solo exhibitions annually and offers a wide range of daily workshops. [Get info and an application here.](#)

If you are a member of the PSC, please feel free to share the Portfolio with your artist friends and encourage them to become members.

### Membership Renewal

You can check the status of your membership by going to the Current Members page on the PSC web-site: <http://sketchclub.org/sample-page/memberspace/>. All current members are listed. An asterisk (\*) means that the membership has expired but is within the 60-day grace period for renewal. Names in red are active links to the individual's web site.

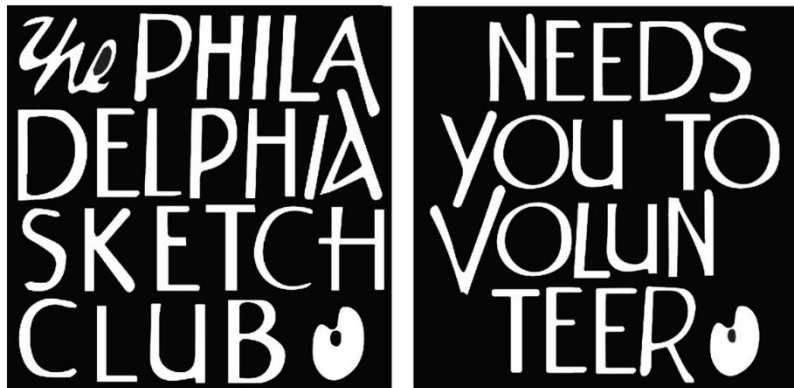
Renew Now! <http://sketchclub.org/annual-dues-payment/>

If you have any questions about your membership, please don't hesitate to contact us at [membership@sketchclub.org](mailto:membership@sketchclub.org) or call the office: 215-545-9298.

## Volunteer

### Be an Active Sketc Club Member; Volunteer!!

The Philadelphia Sketch Club is managed entirely by volunteers except for the gallery manager, housekeeping, and bookkeeper.



The PSC always needs volunteer members. Volunteering is one of the most important aspects of being a Sketch Club member and it is the one of the best ways to take advantage of the PSC. You'll be working with colleagues who share the same interests and helping the PSC provide unique services to the visual arts community. Sign up for an activity today.

Here are some of the activities that volunteers perform:

- Chair exhibitions
- Assist in hanging exhibitions
- Covering exhibition drop-offs and pick-ups
- Monitor workshops
- Assist with presentations
- Serve on the Board of Directors
- Serve as Key Circle volunteers
- Publish the Portfolio
- Manage the PSC web site
- Gallery coverage
- Graphics for Portfolio, PSC web site, social media
- Assist in every aspect of managing the club and providing member services

To get involved, contact:

Jackie Barnett

Volunteer Coordinator

Philadelphia Sketch Club

[jbarnett12@verizon.net](mailto:jbarnett12@verizon.net)



## Support the Sketch Club

### Contribute

Please consider making your tax-deductible contribution now. These funds will be put to good use providing enhanced services to our members and friends.

Membership dues cover only a small portion of the PSC's operating expenses. Competition for funding for arts organizations like the Sketch Club is increasingly competitive and total funding for the arts is shrinking. Your additional support will keep the PSC an active support for visual artists in the Metropolitan Philadelphia area. The Philadelphia Sketch Club is an IRS designated 501(c) (3) non-profit organization.

You can call the office at 215-545-9298, mail checks to the Sketch Club or visit the Contribute page of our Website.

Visit our **Contribute** page of our website to give online at:

<http://sketchclub.org/support-us/>

You can also support the PSC on an ongoing basis when you shop on Amazon. Go to:

<http://smile.amazon.com/> and enter the Philadelphia Sketch Club in the Pick your own charitable organization box.

Your support makes it possible for the PSC to continue providing ongoing daily workshops and numerous annual gallery exhibitions.

### Like, Link & Share

If you're not following the Philadelphia Sketch Club on Facebook re-tweeting Sketch Club tweets yet, it's time that you did. We have well over 2000 Facebook followers. Get the word out about the Sketch Club. Please click the like button and share your comments and invite your friends to like our page.

Follow @PhilaSketchClub on Twitter, we have almost 400 followers. Please click the heart button and re-tweet our announcements.

Include links on your website, blogs and social media to The Philadelphia Sketch Club to increase traction across social media platforms.

Follow us on Facebook, Twitter and Instagram now!

Thanks to Don Brewer and Michelle Lockamy for managing PSC social media sites.



## Member Classifieds

Seeking Framers: Sketch Club members frequently ask about framing services. If you wish to provide framing services to PSC members, please contact the PSC at [info@sketchclub.org](mailto:info@sketchclub.org) or call the PSC office: 215 545-92908



Gallery hours: By appointment: Wednesday, Friday, Saturday, Sunday: 1 PM to 5 PM

September 2020

The Portfolio: The newsletter of the Philadelphia Sketch Club is published monthly. Editor, technical support and webmaster: Ken Weiner. Send your member news, announcements and corrections to [portfolio@sketchclub.org](mailto:portfolio@sketchclub.org). The due date for all materials is one week before the end of the month.

Back issues of the Portfolio are available at: <http://sketchclub.org/portfolio-archive/>

Thanks to PSC member volunteer **Ken Weiner** for his ongoing support of Sketch Club technology and communications functions.

#### The Philadelphia Sketch Club

235 S Camac Street  
Philadelphia, PA 19107  
(215) 545-9298  
<http://sketchclub.org/>  
[gallerymanager@sketchclub.org](mailto:gallerymanager@sketchclub.org)  
[info@sketchclub.org](mailto:info@sketchclub.org)

Gallery Manager: Kaylie Minzola

#### Officers:

- President: Richard Harrington
- Vice President: Kenneth Weiner
- Secretary: Elise Anzini
- Treasurer: William Patterson

#### Board of Directors

- Jacqueline Barnett
- Renard Edwards
- Stephen Iwanczuk
- Edward Pluciennik
- Charles F. Tarr
- Gail Williams