

Gallery hours: By appointment: Wednesday, Friday, Saturday, Sunday: 1 PM to 5 PM

October 2020



Ken Weiner

## Look for updated on-line activities in response to COVID-19: Page 2

### This Month's Portfolio

Sketch Club Special Events	2
Main Gallery Schedule	4
On-Line Exhibition: 2020 Annual Members Exhibition	4
Stewart Gallery Schedule	7
Sketch Club Activities	8
Sketch Club Open Workshop Schedule	19
Opportunities/Notices	20
Membership	24
Volunteer	25
Support the Sketch Club	26
Member Classifieds	26

Send your member news, announcements and corrections to: [portfolio@sketchclub.org](mailto:portfolio@sketchclub.org). The deadline for ALL submissions is 1-week before the end of the month.

Reminder: It's never too late. You can always renew your membership

You may pay online at <http://sketchclub.org/annual-dues-payment/> or mail your check to:

The Philadelphia Sketch Club  
235 S. Camac St.  
Philadelphia, PA 19107

For questions please contact the Gallery Manager at 215-545-9298 or email:

[gallerymanager@sketchclub.org](mailto:gallerymanager@sketchclub.org)

Late Breaking News – See items that were submitted after the publication date. Go to:

<http://sketchclub.org/late-breaking-news/>

The PSC general email is: [info@sketchclub.org](mailto:info@sketchclub.org)

## Sketch Club Special Events

### Sheltering in Place, Social Distancing

You are all aware of the myriad closings, cancellations, and postponements by all organizations in response to the COVID-19 pandemic. The Sketch Club intends to comply with all required social conventions. For the foreseeable future, we will not be holding any events at the PSC facility.

Our gallery manager, Kaylie, will be working from home during our scheduled hours office hours: Wednesday and Friday 1 PM to 5 PM. She can be reached by email at [gallerymanager@sketchclub.org](mailto:gallerymanager@sketchclub.org). You



can also leave messages on the PSC phone: 215-545-9298 and your call will be returned as quickly as possible.

### Stay in Touch with On-Line Resources

- **Update:** The Sketch Club Critique Group: <https://www.facebook.com/groups/PSCCritique>
- **Update:** The Sketch Club Open Gallery: <https://sketchclub.org/sketch-club-open-gallery/>
- The Sketch Club's web site: [sketchclub.org](http://sketchclub.org)
- Our Facebook page: <https://www.facebook.com/thesketchclub/>
- Instagram: <https://www.instagram.com/philadelphiasketch/>
- Twitter: <https://twitter.com/PhilaSketchClub>
- Members: Stay in touch with other PSC colleagues. For contact information, go to the members only page at: <http://sketchclub.org/members-only-2/>. See Stay in touch with current Sketch Club Members in the members section below for instructions.
- Non Sketch Club friends can find a listing of current members names and business websites if they have one at: <http://sketchclub.org/sample-page/current-members-contact-list/>.

### Coming Soon

We are currently exploring ways to enhance existing on-line services and to create new opportunities for PSC members to continue to share their work, creative ideas, and resources

- **Update:** 2020 Annual Members Exhibition: <https://sketchclub.org/2020-annual-members-exhibition/>

We will notify members of details via email when the new features are available.



## Sketch Club Special Events

### The Philadelphia Sketch Club Critique Face Book group



Calling all Sketch Club Members:

Take part in monthly challenges to create new artwork based on a new theme each month. Join us online at the "Philadelphia Sketch Club Critique"-- a Closed group for Active members only on Facebook. You can also find a link on our website and on the PSC's main Facebook page. Basically, the plan works like this:

Active members go to the new "Philadelphia Sketch

Club Critique" page and request access, which is available to all Club members in good standing.

- Once in post your work and watch as other members' post their artwork for that month's composition theme.
- This Facebook Group is private; this means that as Members submit their work others are invited to critique each other in a professional and respectful way.
- Make suggestions for new themes and vote for your favorite.
- More details will be posted within the group including the option to be considered for a monthly "Highlights", a curated online gallery to be published on our external site/Instagram/Twitter channels.

Colleagues, please join in and contribute to your online art community. We all miss the camaraderie we enjoy at the Club house. The "Philadelphia Sketch Club Critique" is a chance to get together online until we can gather once more around the punch bowl and raise a toast, "to the Sketch Club, past, present and future." Stay well, stay safe and stay creative!

Check-out the group's Facebook Page: <https://www.facebook.com/groups/PSCCritique>

Don Gauger -- inaugural champion for the online PSC critique.

### Sketch Club On-Line Gallery: **Call for Work!**

#### **There's always room for more work: Submit Now!**

The Sketch Club is hosting an on-going open gallery at <http://sketchclub.org/sketch-club-open-gallery/>. This gallery is open to PSC members and non-members.

Submit up to 4 images of your work or of yourself working along with a very brief description to [portfolio@sketchclub.org](mailto:portfolio@sketchclub.org).

Include for your work: Your name; Title; size; and medium.

For a photos of yourself include: Who you are and a brief description of the the image.

Gallery hours: By appointment: Wednesday, Friday, Saturday, Sunday: 1 PM to 5 PM

October 2020

## Sketch Club Special Events

### Zoom Workshops



We are planning additional Zoom workshops. Watch for email update for details here and at: [sketchclub.org](https://sketchclub.org)

### Upcoming Zoom Annual Members Meeting

The Philadelphia Sketch Club's postponed required annual meeting is currently in the planning stage.. Details about Zoom access, dates and the agenda will be distributed to all current PSC members in mid-September.

## Main Gallery Schedule

[See the Sketch Club Open Gallery](#)

[See the 2020 Exhibition Schedule](#)

[Important Dates for all PSC Activities](#)

## On-Line Exhibition: 2020 Annual Members Exhibition

Call for Work: Deadline Midnight Friday, October 9<sup>th</sup>, 2020

The Sketch Club invites you to enter our 2020 Annual Members Art Exhibition. This non-juried exhibition is open to all current PSC members. This year's show will be online at <https://sketchclub.org>. The show will run from October 11th to November 11th. As a member, you are invited to submit two (2) artworks of your choice. View the [Prospectus](#) for more information. The deadline for entry is Friday, October 9th at midnight.

Enter the 2020 Annual Members Art Exhibition online: [EntryThingy](#)

We look forward to seeing your work!

Gallery hours: By appointment: Wednesday, Friday, Saturday, Sunday: 1 PM to 5 PM

October 2020

## Main Gallery Schedule

### Art of the Flower Exhibition

March 2 – 19

#### Reception:

Sunday March 15th, 2020, 2:00 –  
4:00 PM

Awards and presentation of  
the Donald C. Meyer Medal  
at 3:00 PM



Image: Doris Peltzman, The Red Kimono

**On-line Gallery Still Available:**

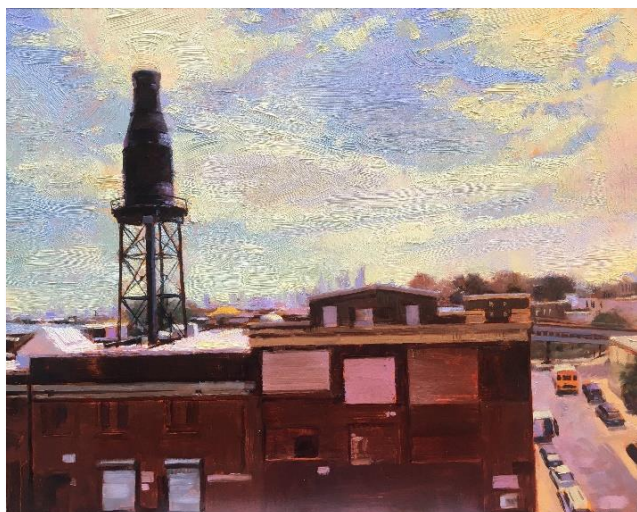
<http://sketchclub.org/2020-art-of-the-flower-exhibition/- gallery>

## Main Gallery Schedule

See the On-line Exhibition and Awards

Philadelphia Sketch Club's 157th Annual Exhibition of Small Oil Paintings

Updated: See the awards here: [157th Small Oil Paintings Awards](#)



Matt DeProspero, Got Milk, Oil on panel – Best in Show 2019

This year's exhibition runs from March 23 to April 30, with a reception on April 5 from 2 to 4 PM. Over 150 works by prominent and emerging artists will be on display. This exhibition represents an opportunity for today's artists to connect with many of the great artists of the past. You can have your work exhibited just as Eakins, Anshutz and N. C. Wyeth have.

### A History of the Exhibition of Small Oil Paintings

The 157th Annual Exhibition of Small Oil Paintings presented by the Philadelphia Sketch Club represents one of the longest running and most prestigious juried exhibitions in the country. Founded in 1860, the Sketch Club is America's oldest artists club. Originally, the show was founded so that artists could display a number of small examples of their works with the

hope that a patron would order a larger painting. Works can be no larger than 20" x 20" excluding frame.

### Awards

In addition to cash awards, the R. Tait McKenzie Small Oils Medal is presented to the First Place winner. Dr. McKenzie was an artist who created Olympic medals, but he was also a physician who developed many of the modern theories of physical therapy. He designed a medal specifically for this exhibition. In addition to the three Best in Show awards, there will also be special awards for the Best Landscape, Still Life, Portrait and Abstract.

Prior medal winners in this exhibition have included Paulette Van Roekens, John Folinsbee, Alice Kent Stoddard, Arthur Meltzer, Antonio Martino, Dorothy Van Loan, Doris Silk, John Redmond and Al Gury.

**On-line Gallery Still Available**

<http://sketchclub.org/157th-small-oil-paintings-2020/#gallery>



Gallery hours: By appointment: Wednesday, Friday, Saturday, Sunday: 1 PM to 5 PM

October 2020

## Main Gallery Schedule

The Workshop Show: May 4 – 28

**EXHIBITION CANCELLED DUE TO COVID-19**



## Stewart Gallery Schedule



**Exhibition space in  
the Stewart Gallery  
is available for PSC  
Members!**

Reserve the gallery by  
contacting our  
Exhibition Coordinator:  
[exhibitions@sketchclub.org](mailto:exhibitions@sketchclub.org)

The space is \$150 for a  
month. Members can  
show once in the Stewart  
Gallery per year.

[See the Sketch Club Open Gallery](#)

[See the 2020 Exhibition Schedule](#)

[Important Dates for all PSC Activities](#)

## Sketch Club Activities

### Critique Night: TBD

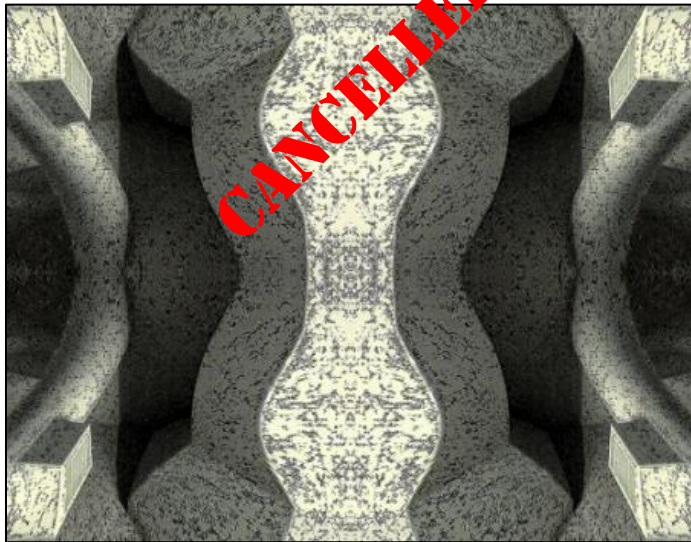
Open to PSC Members and Non-Members

Critique Night is held in the Library of the Sketch Club every third Wednesday beginning at 7 PM. Bring work you have finished, work in progress, or just sketches for work you're planning! Photos, digital work, drawings, all mediums are welcome; we can project digital images on a screen for review, so you have the option to show work that may be too big or too heavy to transport to the Club. There is no one individual directing the critique, just your fellow artists and peers. Facilitated/monitored by Rich Harrington, PSC President



Thanks to PSC member volunteer **Rich Harrington** for organizing and monitoring this event

### Photo Circle: TBD



We will discuss new group activities and possibilities for expansion. The Photo Circle meets every 2<sup>nd</sup> Thursday at 6:30 PM. You can contact Steve anytime at [stphniwan@gmail.com](mailto:stphniwan@gmail.com) or 215-300-9192 (cell). **Steve Iwanczuk**, Photo Circle Monitor and Member of Philadelphia Sketch Club Board of Directors.

Thanks to PSC member volunteer **Steve Iwanczuk** for organizing and monitoring this event.



Gallery hours: By appointment: Wednesday, Friday, Saturday, Sunday: 1 PM to 5 PM

October 2020

## Art Natters: Members News

Sketch Club member **Alice Chung** was awarded the Georgia Dukes Memorial Award for her painting “*Travel*” from the Greater Norristown Art League Fall 2020, First Virtual Exhibition



*Travel*, Medium: Acrylic, 16": x 20"

Gallery hours: By appointment: Wednesday, Friday, Saturday, Sunday: 1 PM to 5 PM

October 2020

## Art Natters: Members News

Sketch Club member **Chris Fowler's** photograph, "*Dam Number 5*", was accepted into the Media Arts Council's online show "H2O", scheduled to run from October 10th through November 7th, 2020.



Dam Number 5

This month Sketch Club member **Nancy Herman** created this print, *The Dynamic Duo Waiting for a Vaccine*  
Digital print, 13" x 19"

<http://nancyherman.com>



The Dynamic Duo Waiting for a Vaccine



## Art Natters: Members News

From Sketch Club member **Daniel Neufeld**.

This panoramic water-color painting is from a photo that I took of Rainbow Row in Charleston, South Carolina last November. You can see in the picture plane how I gave the shadows a different tone and texture each, contrast wise.



"Rainbow Row" watercolor



"Fall Night In Savannah" Photograph

I've sent and shared a lot of drawings and paintings for the monthly portfolio. But I've never submitted a photograph before. So here's one that I took last fall in Savannah, Georgia. What makes this nighttime shot very dramatic is the partly cloudy skies behind the building and the bright light of a full moon, or at least a half moon shining through the clouds.



Gallery hours: By appointment: Wednesday, Friday, Saturday, Sunday: 1 PM to 5 PM

October 2020

Sketch Club member **Dennis Millar**



**Parapluies**



**Fun at the Beach**



**A Street Scene in Europe**



**Reflections**



Gallery hours: By appointment: Wednesday, Friday, Saturday, Sunday: 1 PM to 5 PM

October 2020

Sketch Club member **Laura Marconi** will have a solo exhibition of her work done mostly during the Covid pandemic at Cerulean Arts from October 14, to November 8, 2020. Opening reception will be on October 17 from 2:00 to 5:00.



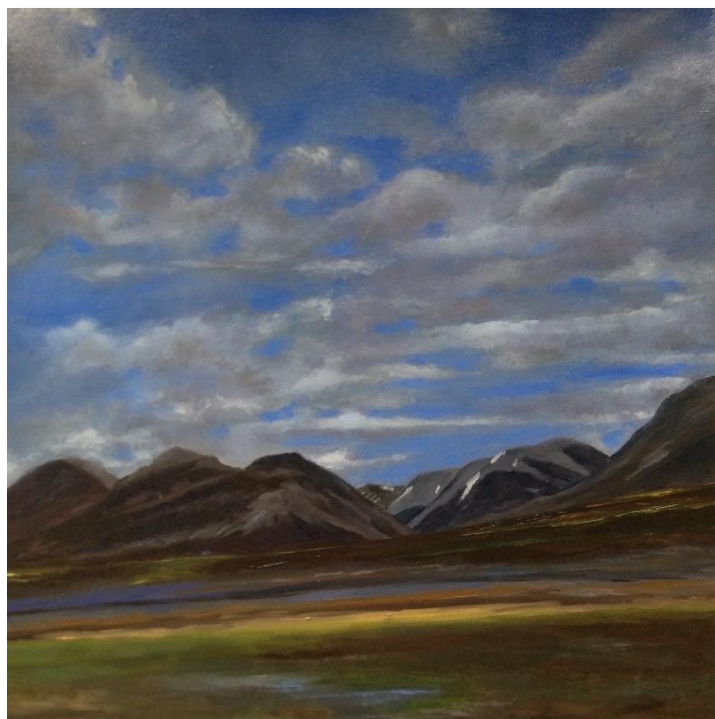
**Deconstruction # 2**

"I'm deconstructing a landscape reflection to create other images and feelings. To look at a subject in a different way, and to deepen my way of seeing. "Those group of paintings will also include smaller work, and everything has been inspired by Iceland

*Deconstruction #2* Oil on Canvas 30"x30"

*Norðurland Eystra* Oil on Panel 12"x12"

Cerulean Arts - 1355, Ridge Avenue  
267-514-8647  
<http://ceruleanarts.com>



**Norðurland Eystra**

Gallery hours: By appointment: Wednesday, Friday, Saturday, Sunday: 1 PM to 5 PM

October 2020

Sketch Club **Mary Waltham** – From the Rivers and Streams series.

4 panels in acrylic on cradled birch support, each panel 10" x 10" (\$1100 the four pieces)

Waltham Golden Skimmer 14" x 17", watercolor on two layers of mylar (Duralar) \$475

Waltham Dwarf Wedge Mussel 14" x 17", watercolor on two layers of mylar (Duralar) \$475

Waltham Yellow Perch 14" x 17", watercolor on two layers of mylar (Duralar)

See more about Mary and her work:

<http://www.marywaltham.com/>



4 panels in acrylic



Golden Skimmer



Dwarf Wedge Mussel



Yellow Perch



## Art Natters: Members News

Sketch Club member, **Matt DeProspero**, winner of the R. Tait Mackenzie award at the 156th Annual Small Oils exhibit, will be having a solo show of new paintings at F.A.N. Gallery in Old City during the month of November. The new works, created primarily during the pandemic, will showcase Matt's unique approach to landscape and cityscape subjects, inspired by the combination of several of his interests, including black & white photography, antiques and woodworking. The paintings incorporate reclaimed and repurposed frames from various vintage pieces such as mirrors, headboards and chair backs, and are all executed in a range of limited or monochromatic color palettes.

As in Matt's full color works, here he strives to capture a certain feeling of the light and atmosphere of a place, with the limited palette lending an added sense of nostalgia and other-worldliness. The combination of old and new brings subjects both recognizable and universal into a different perspective. With these new paintings, the artist seeks to evoke a sense of our place here in time, stuck between the dreams of the past, hope for the future and a return to less chaotic times.

The exhibition will run from November 4th to the 29th, with an opening reception on First Friday Nov. 6th. All paintings will also be accessible through a virtual showing at [www.thefangallery.com](http://www.thefangallery.com). F.A.N. Gallery is located at 221 Arch St. in Philadelphia. You can view more of Matt's work at [www.mattdeprospero.com](http://www.mattdeprospero.com)



Hindsight 2020, 11.5"x12.5" oil on panel



Tres Phantasmas, 20"x50" oil on panel

Gallery hours: By appointment: Wednesday, Friday, Saturday, Sunday: 1 PM to 5 PM

October 2020

## Art Natters: Members News

From Sketch Club member **Su Knoll Horthy**: Thank you to juror, Henry Bermudez, for including my painting, Color Pops, Beautiful Transients 5, in the Perkins Annual Juried Exhibition. Based on the juror, this show should be stellar! The exhibition will be on view October 10th – November 22nd. Please call ahead for hours.

A tentative Opening Reception will be held on Saturday, October 10th from 1:00pm – 3:00pm. The public is welcome.



Color Pops, Beautiful Transients 5



## Art Natters: Members News

Sketch Club member **Robert Reinhardt** says that these past five months have been very intense with COVID-19 events turning our world upside-down. Fortunately, I have been able to shut out the outside world's craziness by diving into my art activities. My studio has seen more action in the past months than usual given the current lock-down restrictions. I've tried to put that extra time to good use in my exploration of watercolor.

These four pieces have me taking more risks and pushing the limits of watercolor to explore a more atmospheric landscape. I'm experimenting with shifting the horizon and how that important line strongly dictates the land to sky ratio. I'm enjoying the excitement my studio time has afforded me.

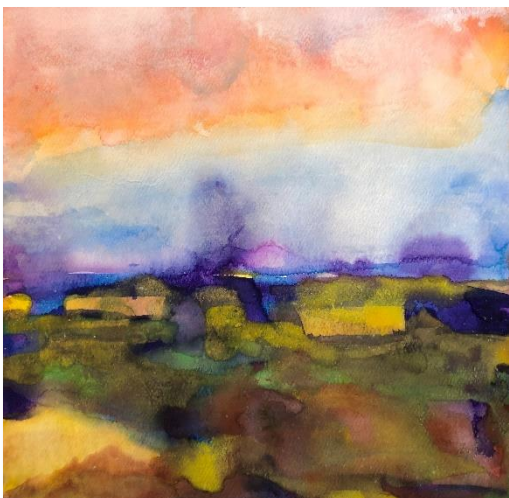
All are 8" x 8" - watercolors



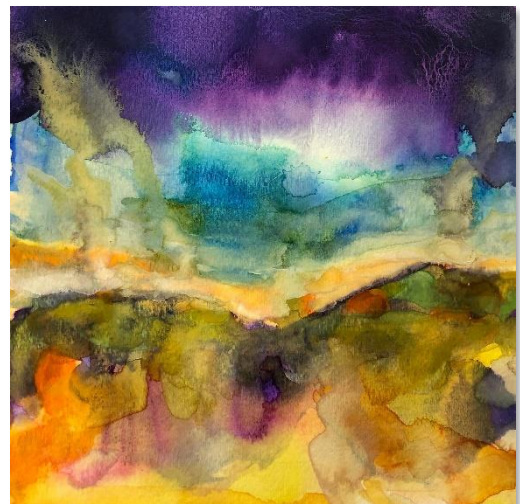
Heat Wave



Rough Terrain



Sunrise Yellow Roof



Under Water



## Art Natters: Members News

From Sketch Club member **Tracey Landmann**: There is a joke going around that the quasi- isolation of the past several months shouldn't affect an artist's output all that much; after all, artists spend a large amount of time alone anyway. Although there is superficial truth in this, those who depend heavily on their perceptions to express via art have undergone drastic changes.

So it is with me. My personal art is dictated by past experiences with and current memories of landscapes I've absorbed (every sense included) on my travels. I translate my feelings to paint, canvas and brush. I've spent years learning how to show people the shimmering beauty of the world. The paintings have always had an echo of clarity; past realizations infused in vivid images. Now, though, the emotion fueling the work is closer to clear.

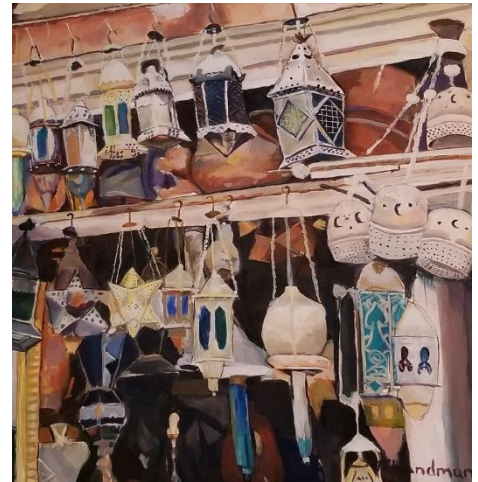
The longing to be surrounded by fearless beauty is very present. Wistfulness joins memory in every brush stroke. Can I communicate my yearning for a life without the isolation of yet another facet of social distance? I don't know... But I can try.



Boat on Barra - oil, 30"x48" , \$2500



Bosnian Renaissance -oil, 30" x 48", \$2500



The Lights Fantastic, oil 36" x 36" \$3500



Tessellated Triangles of Tallinn, oil,  
24" x 36" \$2000

Gallery hours: By appointment: Wednesday, Friday, Saturday, Sunday: 1 PM to 5 PM

October 2020

## Sketch Club Open Workshop Schedule

All workshops are open to the public. There is no need to register before attending. You do NOT have to be a member of the Philadelphia Sketch Club to participate in the workshops. Our workshops are open to anyone who is interested in drawing, painting or printmaking. All skill levels are welcome. Fees: Model workshops: \$8/session members, \$9/session for non-PSC members; Printmaking workshop: \$10/session; All workshops \$6 for full-time students. Monitored by PSC members.

Life Model	Costumed Model	Printmaking
<p>Mondays – 5, 20, and 40-minute poses 5:30 PM-9:30PM Monitors: Jackie Barnett and Tom Kohlmann</p> <p>Tuesdays – Extended pose: 12:00 PM to 3:00 PM Monitor: Jacqueline Barnett</p> <p>Wednesdays – Extended pose: 6:30 to 9:30 PM Monitor: Vince Docktor</p> <p>Saturdays – Extended pose: 9:30 AM to 12:30 PM Monitor: Vince Docktor</p>	<p>Thursdays Extended pose 12:00 PM to 3:00 PM Monitor: Bob Bohne.</p>	<p>Tuesdays 10:00 AM to 2:00 PM Monitor: Elizabeth H. MacDonald</p>

**WATCH FOR UPDATES - CANCELLED DUE TO COVID-19**

Please Note: Those who use oil paints should bring their own container(s) to remove used solvents. Odorless solvents only.

Thank you to all the PSC members who donate their time and expertise to make these workshops available to PSC members and the Philadelphia art community.



## Opportunities/Notices

As a courtesy to our non-PSC-member friends, in support of the Philadelphia artist community, we publish your notices, etc., free of charge. However, contributions to the PSC are always welcome. And, we will gladly consider your application for membership

[Contribute to the Sketch Club Here](#)   [Apply for PSC Membership Here](#)

"The New Pre-Raphaelites is a virtual exhibition on September 25th, an epic exhibition of 40 contemporary realist artists and a total of over 70 artworks inspired by the original Pre-Raphaelites! To attend the live, virtual exhibition opening and hear the artist talk about their work, and to browse the art and presell work, visit <http://eracontemporary.com>.





## Opportunities/Notices

From **Allyson Church**. Graduate Assistant at the Temple Contemporary gallery at the Tyler School of Art & The gallery is hosting a free weekly artist lecture series online. The lectures tend to be on Wednesday evenings (though not all are) and always start at 6 pm.

[Noel W Anderson- Sept 23rd](#)

[Sarah Kavage- Sept 30th](#)

[Cecilia Vicuña- October 5th](#)

[Indira Allegra- October 7th](#)

[Shannon Finnegan- October 13th](#)

[BFAMFAPHD- October 21st](#)

[Emma Nishimura- October 28th](#)

[ShiPu Wang- November 10th](#)

[Las Nietas de Nonó- November 11th](#) (this will be a bilingual event with Spanish and English interpreters)

[Shaun Leonardo- November 17th](#)

Gallery hours: By appointment: Wednesday, Friday, Saturday, Sunday: 1 PM to 5 PM

October 2020

## Opportunities/Notices

### Larry Francis Show: " Morning Into Night "

At:

SOMA New Art Gallery  
Carpenter Square Mall  
31 Perry Street  
Cape May N.J. 08204

September 19<sup>th</sup> — November 1st



"Dreaming" oil on canvas 30" x 42"





Gallery hours: By appointment: Wednesday, Friday, Saturday, Sunday: 1 PM to 5 PM

October 2020

## Opportunities/Notices

## Membership

### Stay in touch with current Sketch Club Members

Don't let sheltering in place prevent you from staying in touch with your Sketch Club friends and colleagues. Sketch Club members can access contact information for all current members. Go to the members only page at: <http://sketchclub.org/members-only-2/>. After you log-in with the password sent to you in your acceptance email you can click on the Membership Directory link to access members contact information. Non Sketch Club friends can find a listing of current members along with their websites if they have one at: <http://sketchclub.org/sample-page/current-members-contact-list/>:

### Recent New Sketch club Members

- Not a member? Your name should be here!

For a complete listing of Sketch Club members, go to: <http://sketchclub.org/sample-page/current-members-contact-list/>

### Not a PSC Member?: Join Now!

If you're reading this edition of the Portfolio and you're not a member of the PSC, you should consider joining the more than 200 other Philadelphia area artists who have. The PSC is one of the most active visual art venues serving center city Philadelphia. The PSC is a hands-on organization that offers its members the opportunity to participate in all aspects of creating and presenting work to the public. It presents over 20 scheduled group and solo exhibitions annually and offers a wide range of daily workshops. [Get info and an application here.](#)

If you are a member of the PSC, please feel free to share the Portfolio with your artist friends and encourage them to become members.

### Membership Renewal

You can check the status of your membership by going to the Current Members page on the PSC web-site: <http://sketchclub.org/sample-page/memberspace/>. All current members are listed. An asterisk (\*) means that the membership has expired but is within the 60-day grace period for renewal. Names in red are active links to the individual's web site.

Renew Now! <http://sketchclub.org/annual-dues-payment/>

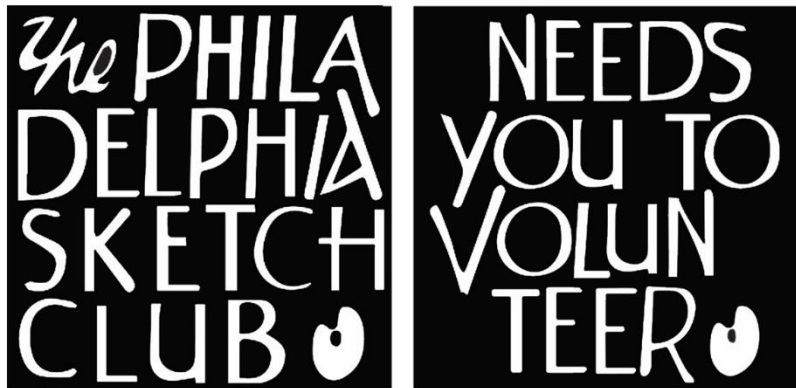
If you have any questions about your membership, please don't hesitate to contact us at [membership@sketchclub.org](mailto:membership@sketchclub.org) or call the office: 215-545-9298.



## Volunteer

### Be an Active Sketc Club Member; Volunteer!!

The Philadelphia Sketch Club is managed entirely by volunteers except for the gallery manager, housekeeping, and bookkeeper.



The PSC always needs volunteer members. Volunteering is one of the most important aspects of being a Sketch Club member and it is the one of the best ways to take advantage of the PSC. You'll be working with colleagues who share the same interests and helping the PSC provide unique services to the visual arts community. Sign up for an activity today.

Here are some of the activities that volunteers perform:

- Chair exhibitions
- Assist in hanging exhibitions
- Covering exhibition drop-offs and pick-ups
- Monitor workshops
- Assist with presentations
- Serve on the Board of Directors
- Serve as Key Circle volunteers
- Publish the Portfolio
- Manage the PSC web site
- Gallery coverage
- Graphics for Portfolio, PSC web site, social media
- Assist in every aspect of managing the club and providing member services

To get involved, contact:

Jackie Barnett

Volunteer Coordinator

Philadelphia Sketch Club

[jbarnett12@verizon.net](mailto:jbarnett12@verizon.net)

## Support the Sketch Club

### Contribute

Please consider making your tax-deductible contribution now. These funds will be put to good use providing enhanced services to our members and friends.

Membership dues cover only a small portion of the PSC's operating expenses. Competition for funding for arts organizations like the Sketch Club is increasingly competitive and total funding for the arts is shrinking. Your additional support will keep the PSC an active support for visual artists in the Metropolitan Philadelphia area. The Philadelphia Sketch Club is an IRS designated 501(c) (3) non-profit organization.

You can call the office at 215-545-9298, mail checks to the Sketch Club or visit the Contribute page of our Website.

Visit our **Contribute** page of our website to give online at:

<http://sketchclub.org/support-us/>

You can also support the PSC on an ongoing basis when you shop on Amazon. Go to: <http://smile.amazon.com/> and enter the Philadelphia Sketch Club in the Pick your own charitable organization box.

Your support makes it possible for the PSC to continue providing ongoing daily workshops and numerous annual gallery exhibitions.

### Like, Link & Share

If you're not following the Philadelphia Sketch Club on Facebook re-tweeting Sketch Club tweets yet, it's time that you did. We have well over 2000 Facebook followers. Get the word out about the Sketch Club. Please click the like button and share your comments and invite your friends to like our page.

Follow @PhilaSketchClub on Twitter, we have almost 400 followers. Please click the heart button and re-tweet our announcements.

Include links on your website, blogs and social media to The Philadelphia Sketch Club to increase traction across social media platforms.

Follow us on Facebook, Twitter and Instagram now!

Thanks to Don Brewer and Michelle Lockamy for managing PSC social media sites.



## Member Classifieds

Seeking Framers: Sketch Club members frequently ask about framing services. If you wish to provide framing services to PSC members, please contact the PSC at [info@sketchclub.org](mailto:info@sketchclub.org) or call the PSC office: 215 545-92908





Gallery hours: By appointment: Wednesday, Friday, Saturday, Sunday: 1 PM to 5 PM

October 2020

The Portfolio: The newsletter of the Philadelphia Sketch Club is published monthly. Editor, technical support and webmaster: Ken Weiner. Send your member news, announcements and corrections to [portfolio@sketchclub.org](mailto:portfolio@sketchclub.org). The due date for all materials is one week before the end of the month.

Back issues of the Portfolio are available at: <http://sketchclub.org/portfolio-archive/>

Thanks to PSC member volunteer **Ken Weiner** for his ongoing support of Sketch Club technology and communications functions.

#### The Philadelphia Sketch Club

235 S Camac Street  
Philadelphia, PA 19107  
(215) 545-9298  
<http://sketchclub.org/>  
[gallerymanager@sketchclub.org](mailto:gallerymanager@sketchclub.org)  
[info@sketchclub.org](mailto:info@sketchclub.org)

Gallery Manager: Kaylie Minzola

#### Officers:

- President: Richard Harrington
- Vice President: Kenneth Weiner
- Secretary: Elise Anzini
- Treasurer: William Patterson

#### Board of Directors

- Jacqueline Barnett
- Renard Edwards
- Stephen Iwanczuk
- Edward Pluciennik
- Charles F. Tarr
- Gail Williams