



Brenda Bechtel

## Look for updated on-line activities in response to COVID-19: Page 2

### This Month's Portfolio

Sketch Club Special Events	2
Main Gallery Schedule	7
Stewart Gallery Schedule	11
Sketch Club Activities	12
Sketch Club Open Workshop Schedule	20
Opportunities/Notices	21
Membership	25
Volunteer	26
Support the Sketch Club	27
Member Classifieds	27
Send your member news, announcements and corrections to: <a href="mailto:portfolio@sketchclub.org">portfolio@sketchclub.org</a> . The deadline for ALL submissions is 1-week before the end of the month.	

Reminder: It's never too late. You can always renew your membership

You may pay online at <http://sketchclub.org/annual-dues-payment/> or mail your check to:

The Philadelphia Sketch Club  
235 S. Camac St.  
Philadelphia, PA 19107

For questions please contact the Gallery Manager at 215-545-9298 or email:

[gallerymanager@sketchclub.org](mailto:gallerymanager@sketchclub.org)

Late Breaking News – See items that were submitted after the publication date. Go to:

<http://sketchclub.org/late-breaking-news/>

The PSC general email is: [info@sketchclub.org](mailto:info@sketchclub.org)

## Sketch Club Special Events

### Sheltering in Place, Social Distancing

You are all aware of the myriad closings, cancellations, and postponements by all organizations in response to the COVID-19 pandemic. The Sketch Club intends to comply with all required social conventions. For the foreseeable future, we will not be holding any events at the PSC facility.

Our gallery manager, Kaylie, will be working from home during our scheduled hours office hours: Wednesday and Friday 1 PM to 5 PM. She can be reached by email at [gallerymanager@sketchclub.org](mailto:gallerymanager@sketchclub.org). You



can also leave messages on the PSC phone: 215-545-9298 and your call will be returned as quickly as possible.

### Stay in Touch with On-Line Resources

- **Update:** The Sketch Club Critique Group: <https://www.facebook.com/groups/PSCCritique>
- **Update:** The Sketch Club Open Gallery: <https://sketchclub.org/sketch-club-open-gallery/>
- The Sketch Club's web site: [sketchclub.org](http://sketchclub.org)
- Our Facebook page: <https://www.facebook.com/thesketchclub/>
- Instagram: <https://www.instagram.com/philadelphiasketch/>
- Twitter: <https://twitter.com/PhilaSketchClub>
- Members: Stay in touch with other PSC colleagues. For contact information, go to the members only page at: <http://sketchclub.org/members-only-2/>. See Stay in touch with current Sketch Club Members in the members section below for instructions.
- Non Sketch Club friends can find a listing of current members names and business websites if they have one at: <http://sketchclub.org/sample-page/current-members-contact-list/>.

### Coming Soon

We are currently exploring ways to enhance existing on-line services and to create new opportunities for PSC members to continue to share their work, creative ideas, and resources

- **Update:** 2020 Annual Members Exhibition: <https://sketchclub.org/2020-annual-members-exhibition/>

We will notify members of details via email when the new features are available.

## Sketch Club Special Events

### The Philadelphia Sketch Club Critique Face Book group



Calling all Sketch Club Members:

33 Members and Growing!

Take part in monthly challenges to create new artwork based on a new theme each month.

Join us online at the "Philadelphia Sketch Club Critique"-- a Closed group for Active members only

on Facebook. You can also find a link on our website and on the PSC's main Facebook page. Basically, the plan works like this:

Active members go to the new "Philadelphia Sketch Club Critique" page and request access, which is available to all Club members in good standing.

Once in post your work and watch as other members' post their artwork for that month's composition theme.

This Facebook Group is private; this means that as Members submit their work others are invited to critique each other in a professional and respectful way.

Make suggestions for new themes and vote for your favorite.

More details will be posted within the group including the option to be considered for a monthly "Highlights", a curated online gallery to be published on our external site/Instagram/Twitter channels.

Colleagues, please join in and contribute to your online art community. We all miss the camaraderie we enjoy at the Club house. The "Philadelphia Sketch Club Critique" is a chance to get together online until we can gather once more around the punch bowl and raise a toast, "to the Sketch Club, past, present and future."

Stay well, stay safe and stay creative!

Check-out the group's Facebook Page: <https://www.facebook.com/groups/PSCCritique>

Don Gauger -- inaugural champion for the online PSC critique.



Gallery hours: By appointment: Wednesday, Friday, Saturday, Sunday: 1 PM to 5 PM

November 2020

## Sketch Club Special Events

Sketch Club On-Line Gallery: **Call for Work!**

**There's always room for more work: Submit Now!**

The Sketch Club is hosting an on-going open gallery at <http://sketchclub.org/sketch-club-open-gallery/>. This gallery is open to PSC members and non-members.

Submit up to 4 images of your work or of yourself working along with a very brief description to [portfolio@sketchclub.org](mailto:portfolio@sketchclub.org).

Include for your work: Your name; Title; size; and medium.

For a photos of yourself include: Who you are and a brief description of the the image.

## Zoom Workshops



We are planning additional Zoom workshops. Watch for email update for details here and at: [sketchclub.org](http://sketchclub.org)

If you have a creative inspiration for an on-line workshop, please contact us at the PSC office and we will work with you to make it available to our community.

## About the Portfolio Banner Artist: Brenda Bechtel

Many thanks to Sketch Club member **Brenda Bechtel** who provided the image for this month's Portfolio Cover Banner. Brenda is a long-time member of the PSC and she is a frequent contributor to the Portfolio and exhibitions. It was necessary to crop the image to conform to the banner format. Here is the original image:



Jenkins Farm

We are always willing to accept work for the banner. For more information about submitting work and formats appropriate for the Portfolio, follow this link: <https://sketchclub.org/portfolio-submissions/>

## Sketch Club Special Events

### While You Were Away: Sketch Club Maintenance

Since the start of the COVID-19 lock-down that started in March, the Sketch Club facility was closed to all of our scheduled activities. However, there has been much activity. **Chuck Tarr**, Board member and House Chair assisted by Sketch Club member **Tom Kohlmann**, Facilities Manager have been busy managing the many needed repairs and upgrades necessary to keep our ageing Sketch Club building up-to-date and safe for our members and friends.

Here are some of the highlights:

- Repair of roof leak and repair Gallery cracks in ceiling and upper walls and area was painted
- Replace AC circuit board
- Refinish upstairs gallery floor
- Paint upstairs gallery lockers
- Paint upstairs gallery storage closet interiors
- Repair ceiling tiles in the upstairs storage area
- Annual service of heating and AC units
- Major servicing of water/sewer services
- Lighting upgrade in Rathskeller
- Lighting upgrade in back stairway
- Lighting upgrade in water heater utility closet
- Numerous other refurbishing, repairs, and required services

This required maintenance of our Sketch Club home is costly. We ask our members and friends to help keep the PSC financially healthy. Friends, please consider contributing to our maintenance fund. Members, please consider financial support beyond membership. [Make an On-line Contribution](#)



Upstairs Storage - Before



Upstairs Storage - After



Upstairs Storage Ceiling Repair

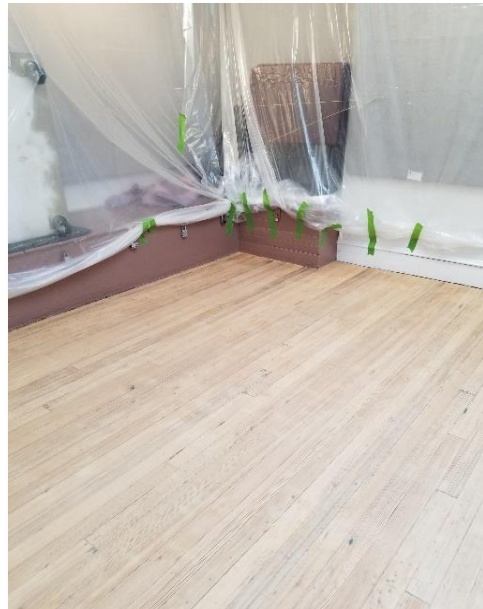
## Sketch Club Special Events

### While You Were Away: Sketch Club Maintenance - Continued

**Chuck Tarr, Tom Kohlmann,** and PAFA graduate **Roger Chavez** are currently refinishing of the Upstairs Gallery floor. This back-breaking work is a major effort; sanding/scraping the surface and applying multiple coats of finish.



Upstairs Gallery Floor Refinish - Before



Upstairs Gallery Floor Refinish in Progress



Upstairs Gallery Refinish Prep



## Sketch Club Special Events

### While You Were Away: Sketch Club Maintenance - Continued

Our water/sewage system needed a major upgrade. Our connections to the city services needed to be replaced. That required major excavation on the sidewalk in front of our building. Rebuilding the sidewalk was a major part of completing the project.



Plumbing/Paving Repair Underway

This required maintenance of our Sketch Club home is costly. We ask our members and friends to help keep the PSC financially healthy. Friends, please consider contributing to our maintenance fund. Members, please consider financial support beyond membership.

[Make an On-line Contribution](#)



Plumbing/Paving Repair Finished

## Main Gallery Schedule

[See the Sketch Club Open Gallery](#)

[See the 2020 Exhibition Schedule](#)

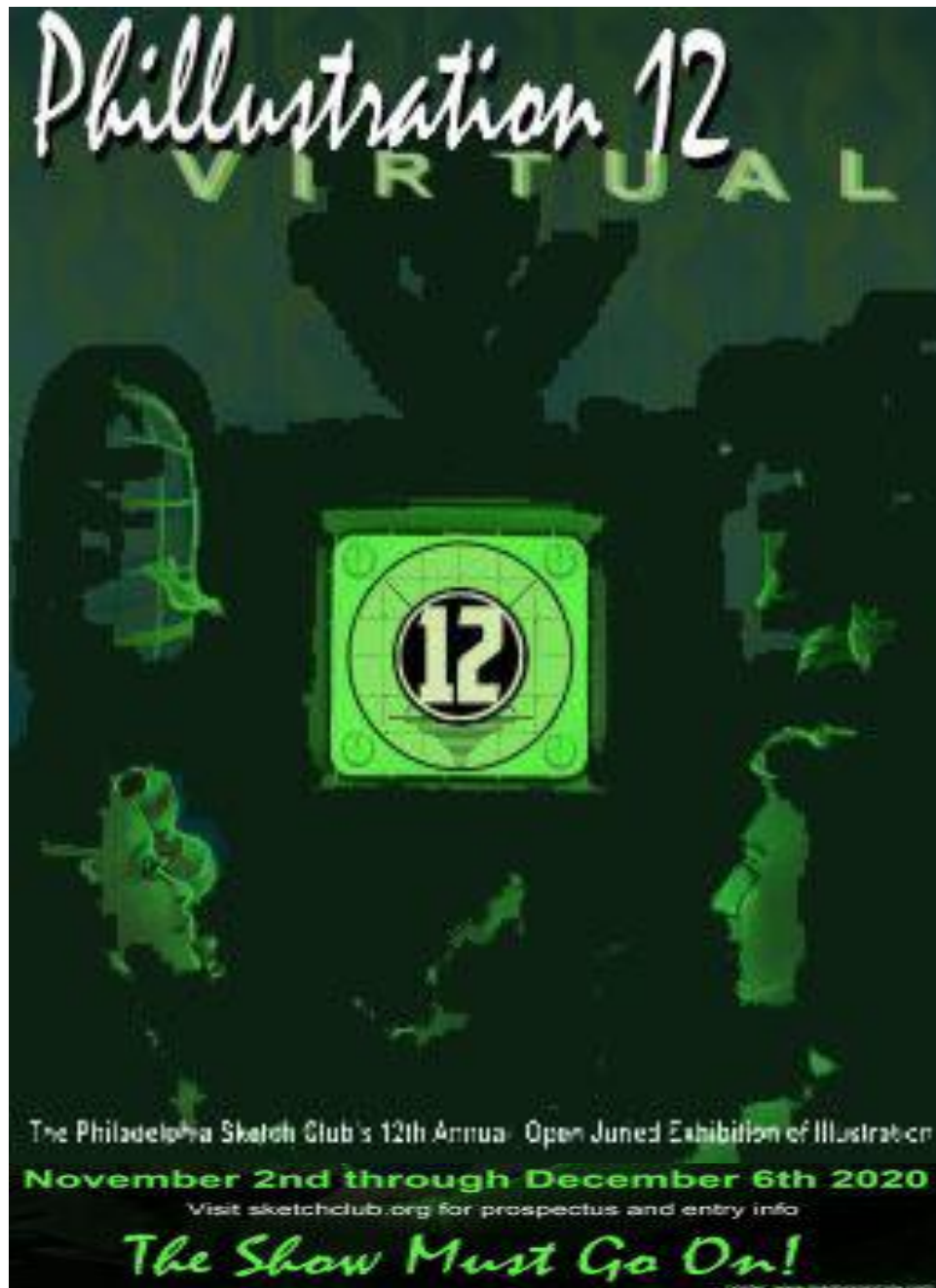
[Important Dates for all PSC Activities](#)

Gallery hours: By appointment: Wednesday, Friday, Saturday, Sunday: 1 PM to 5 PM

November 2020

## Main Gallery Schedule

[See the On-line Gallery Here](#)



[See the On-line Gallery Here](#)



Gallery hours: By appointment: Wednesday, Friday, Saturday, Sunday: 1 PM to 5 PM

November 2020

## Main Gallery Schedule

### Art of the Flower Exhibition

March 2 – 19

#### Reception:

Sunday March 15th, 2020, 2:00 –  
4:00 PM

Awards and presentation of  
the Donald C. Meyer Medal  
at 3:00 PM



Image: Doris Peltzman, The Red Kimono

**On-line Gallery Still Available:**

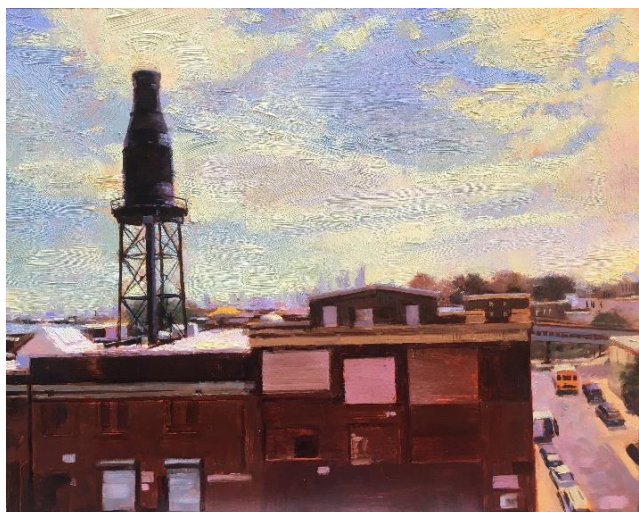
<http://sketchclub.org/2020-art-of-the-flower-exhibition/- gallery>

## Main Gallery Schedule

See the On-line Exhibition and Awards

Philadelphia Sketch Club's 157th Annual Exhibition of Small Oil Paintings

Updated: See the awards here: [157th Small Oil Paintings Awards](#)



Matt DeProspero, Got Milk, Oil on panel – Best in Show 2019

This year's exhibition runs from March 23 to April 30, with a reception on April 5 from 2 to 4 PM. Over 150 works by prominent and emerging artists will be on display. This exhibition represents an opportunity for today's artists to connect with many of the great artists of the past. You can have your work exhibited just as Eakins, Anshutz and N. C. Wyeth have.

### A History of the Exhibition of Small Oil Paintings

The 157th Annual Exhibition of Small Oil Paintings presented by the Philadelphia Sketch Club represents one of the longest running and most prestigious juried exhibitions in the country. Founded in 1860, the Sketch Club is America's oldest artists club. Originally, the show was founded so that artists could display a number of small examples of their works with the

hope that a patron would order a larger painting. Works can be no larger than 20" x 20" excluding frame.

### Awards

In addition to cash awards, the R. Tait McKenzie Small Oils Medal is presented to the First Place winner. Dr. McKenzie was an artist who created Olympic medals, but he was also a physician who developed many of the modern theories of physical therapy. He designed a medal specifically for this exhibition. In addition to the three Best in Show awards, there will also be special awards for the Best Landscape, Still Life, Portrait and Abstract.

Prior medal winners in this exhibition have included Paulette Van Roekens, John Folinsbee, Alice Kent Stoddard, Arthur Meltzer, Antonio Martino, Dorothy Van Loan, Doris Silk, John Redmond and Al Gury.

**On-line Gallery Still Available**

<http://sketchclub.org/157th-small-oil-paintings-2020/#gallery>

Gallery hours: By appointment: Wednesday, Friday, Saturday, Sunday: 1 PM to 5 PM

November 2020

## Main Gallery Schedule

The Workshop Show: May 4 – 28

**EXHIBITION CANCELLED DUE TO COVID-19**



## Stewart Gallery Schedule



**Exhibition space in  
the Stewart Gallery  
is available for PSC  
Members!**

Reserve the gallery by  
contacting our  
Exhibition Coordinator:  
exhibitions@sketchclub.org

The space is \$150 for a  
month. Members can  
show once in the Stewart  
Gallery per year.

[See the Sketch Club Open Gallery](#)

[See the 2020 Exhibition Schedule](#)

[Important Dates for all PSC Activities](#)



## Sketch Club Activities

### Critique Night: TBD

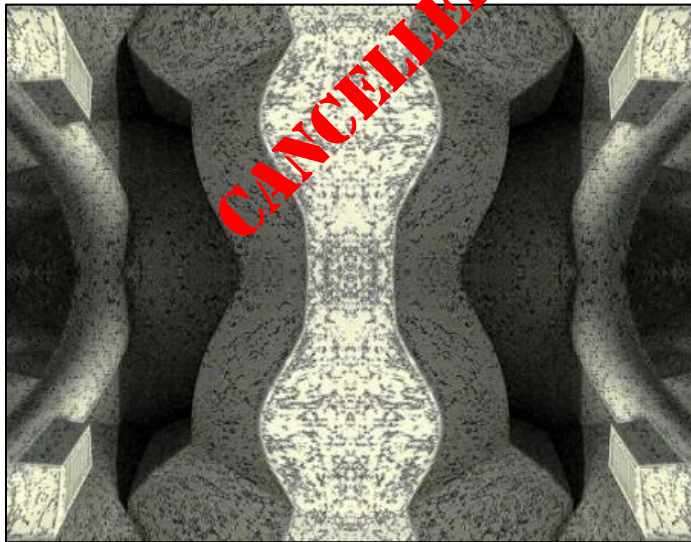
Open to PSC Members and Non-Members

Critique Night is held in the Library of the Sketch Club every third Wednesday beginning at 7 PM. Bring work you have finished, work in progress, or just sketches for work you're planning! Photos, digital work, drawings, all mediums are welcome; we can project digital images on a screen for review, so you have the option to show work that may be too big or too heavy to transport to the Club. There is no one individual directing the critique, just your fellow artists and peers. Facilitated/monitored by Rich Harrington, PSC President



Thanks to PSC member volunteer **Rich Harrington** for organizing and monitoring this event

### Photo Circle: TBD



We will discuss new group activities and possibilities for expansion. The Photo Circle meets every 2<sup>nd</sup> Thursday at 6:30 PM. You can contact Steve anytime at [stphniwan@gmail.com](mailto:stphniwan@gmail.com) or 215-300-9192 (cell). **Steve Iwanczuk**, Photo Circle Monitor and Member of Philadelphia Sketch Club Board of Directors.

Thanks to PSC member volunteer **Steve Iwanczuk** for organizing and monitoring this event.

Gallery hours: By appointment: Wednesday, Friday, Saturday, Sunday: 1 PM to 5 PM

November 2020

## Art Natters: Members News

Sketch Club member **Barbara Tracy** won second place at the Medford NJ The Great Outdoors Art Exhibition with her painting, "What Lies Beyond". "Created days after attending my 96-year-old mother's funeral I felt compelled to paint this stalwart tree rising from the fields to meet the sky and dusk."



**What Lies Beyond**

Retiring from her teaching career in 2012, Barbara Tracy devotes all her time to painting in her studio or plein air.

Barbara is the featured artist at a new gallery/corporate office space on Main St in New Hope starting October 30<sup>th</sup>. See Opportunities/Notices section below.



**Back Road to Bucks County**



**My Tree**

Barbara's work reflects her fascination and enduring relationship with the sensuousness of nature. Known for her arresting and lush landscapes, She captures the spirit of place. According to the artist, her work strives to engage the viewer in a shared love of nature. Acrylic and watercolor best suits her desire to capture nature's vulnerability and beauty. With an emphasis on Impressionistic brushstroke and color, Tracy leads us into the world of intense harmony through nature. She paints as a means of communicating the loss looming over the natural world from climate change.



Gallery hours: By appointment: Wednesday, Friday, Saturday, Sunday: 1 PM to 5 PM

November 2020

## Art Natters: Members News

Sketch Club Member, **Brenda L Bechtel** (since 2009) has paintings included in new "Live" Exhibitions....but First, gratitude to Judge of Awards, Michael Viera for recognizing "Ladybug Picnic ~ Chanticleer" Oil on Linen with Forth Place (six awards were given) in New Haven Paint & Clay Club Active Elected Member Exhibition, hosted by Lyme Academy of Fine Art, Historic Sill House Gallery, Old Lyme, CT.

Through November 7, Zullo Gallery hosts the "26th Annual National Juried Exhibition" LIVE on their walls in Medfield, Massachusetts. Selections Judged by Susan Parker, Director of Isabella Stewart Gardner Museum, Professor Fine Art, Danforth Museum include "Blue Skies Smiling at Me" Oil on Linen.

The National Art League 90th Exhibition, Juried by James LaMantia, is virtual through October 31, and includes "Cherished" Watercolor. New Hampshire Art Association Joan Dunfey 21st National Exhibition themed "Intrinsic Moments" was Judged by Lydia Gordon, Associate Curator, Peabody Essex Museum and includes "Papyrus with Elephant Ears ~ Chanticleer" Oil on Linen through November 30.



Halloween Snow" Transparent Watercolor

Connecticut Women Artists National 2020 Exhibition, Judge of Selection and Awards, Carol Padberg has chosen "Cherished" Transparent Watercolor to be included in this virtual exhibition through November 30th.

For more info and to view the shows, please visit <http://www.BrendaLBechtel.com>



## Art Natters: Members News

Sketch Club member **Bryan McCarthy's** Lita and The Swan in Veremaint White marble



Gallery hours: By appointment: Wednesday, Friday, Saturday, Sunday: 1 PM to 5 PM

November 2020

Nor sure whether the correct analogy is a hat-trick or a trifecta, but Sketch Club member **Chris Fowler** has had three pictures juried into the 2020 Grand Prairie Texas Arts Council Virtual Juried Art Show and Sale

The show runs from October 31-December 31, 2020, on the Grand Prairie Arts Council website.

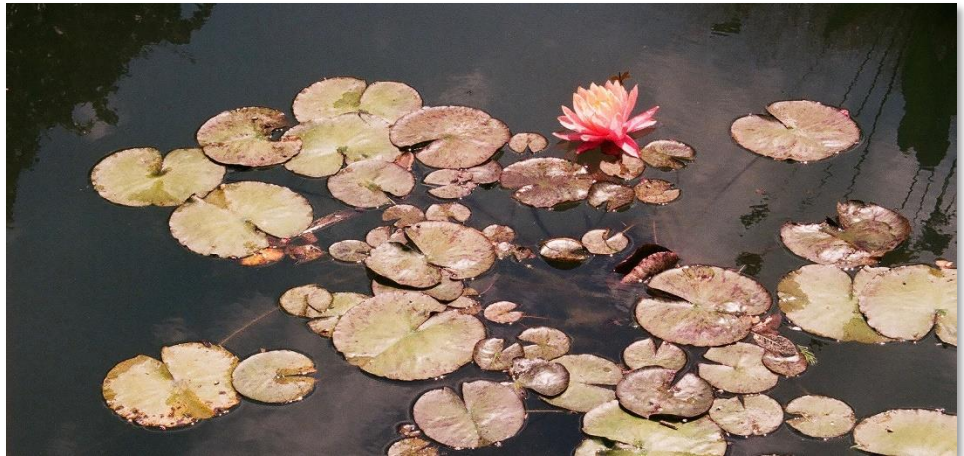


Figure 1 Homage a Monet



Icebound



The Moore



Gallery hours: By appointment: Wednesday, Friday, Saturday, Sunday: 1 PM to 5 PM

November 2020

## Art Natters: Members News

Sketch Club member **Joellyn Ross** is honored to be one of six artists in the DaVinci Art Alliance's "Inquisitives" exhibition, part of the Alliance's DaVinci Fest, celebrating the intersections of art and science. Here, I am pictured with my three paintings in the exhibit.



Joellyn Ross with her three paintings



## Art Natters: Members News

From Sketch Club member **Mary Waltham** -Better Together artists

As we all make our own journey through the Covid 19 pandemic, we shift our lives. For artists across all media there can be a feeling of isolation. Some choose to move more deliberately online to display their work, to address an audience and to work with community.

### **Renewed awareness** Better Together Artists

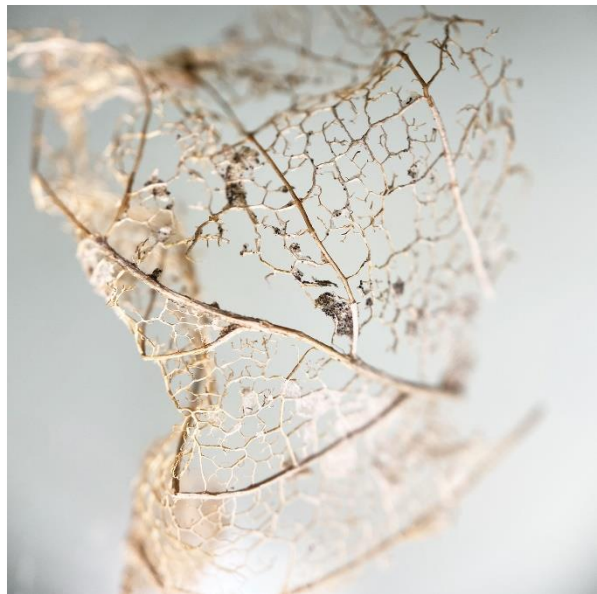
(<https://www.bettertogetherartists.net>) is an international online and onsite collaboration founded by Mary Waltham, Sonya Lee in Madrid and E-K Gerdin-Miosga in London. We met during our online fine art degree program, and finally face-to-face at our graduation in Edinburgh in November 2019.

Early in 2020 we 3 decided to try to meet the need for artists to *"collaborate and exhibit globally while still taking an active part in their vibrant local art scene"*. Although the pandemic had yet to emerge, it is proving to be a timely initiative.

Our first open call to artists, entitled *Renewed Awareness*, challenged artists all around the world to explore this theme by considering,

*"When the life we each plan for 2020 and beyond is turned upside down by a global pandemic, how do we respond? Everyone reacts differently but for many the period of 'stay-at-home' is one of deeper reflection, an experience of renewed awareness. What have you become more aware of?"*

From a large number of submissions we selected fifteen international artists who give powerful expression to their 'Renewed Awareness' in video, painting and drawing. On view now here <https://bit.ly/2FKsLzF> .



Catalina Aranguren, 'Leaf Remains' (2020):  
Photograph 91.5 x 91.5cm (36 x 36")



A M Bailey, "Robinson-  
The Three Men That Drew the Irish Border" I\_Oil on Pape

Gallery hours: By appointment: Wednesday, Friday, Saturday, Sunday: 1 PM to 5 PM

November 2020

## Art Natters: Members News

As a member I want to overwhelmingly thank Chuck, Tom, his friend and any others whose names I may not know. As well as Rich Harrington, Bill Patterson and those responsible for approving this enterprise. During this stressful time they have managed to complete much necessary upkeep, repair and improvement to our beautiful old building.

Their accomplishment is something that could only be worked on with the facilities not in use by us. They individually recognized this and took advantage of a negative down time in our culture. You were all good people. A difficult job, very worth doing.

Thank you

Sketch Club member **Rich Alliger**

Please join Sketch Club member **Rob Finn** for this presentation of the first season of my year-long Maker/Creator Fellowship! I'll be showing several of my large watercolors, talking about the process and having Q&A with current and former Winterthur fellows, members of the entire Winterthur community and you! You can email me at [robfinnpainting@yahoo.com](mailto:robfinnpainting@yahoo.com) and see my work at [robfinn.com](http://robfinn.com)

## Winterthur Research Fellowship Program Presents: Research Happy Hour with Artist Rob Finn!

“Tree Portraits of Winterthur, Part 1”

November 5, 5:15pm EDT via Zoom



RSVP to [tguiler@winterthur.org](mailto:tguiler@winterthur.org) for Zoom link

Gallery hours: By appointment: Wednesday, Friday, Saturday, Sunday: 1 PM to 5 PM

November 2020

## Sketch Club Open Workshop Schedule

All workshops are open to the public. There is no need to register before attending. You do NOT have to be a member of the Philadelphia Sketch Club to participate in the workshops. Our workshops are open to anyone who is interested in drawing, painting or printmaking. All skill levels are welcome. Fees: Model workshops: \$8/session members, \$9/session for non-PSC members; Printmaking workshop: \$10/session; All workshops \$6 for full-time students. Monitored by PSC members.

Life Model	Costumed Model	Printmaking
<p>Mondays – 5, 20, and 40-minute poses 5:30 PM-9:30PM Monitors: Jackie Barnett and Tom Kohlmann</p> <p>Tuesdays – Extended pose: 12:00 PM to 3:00 PM Monitor: Jacqueline Barnett</p> <p>Wednesdays – Extended pose: 6:30 to 9:30 PM Monitor: Vince Docktor</p> <p>Saturdays – Extended pose: 9:30 AM to 12:30 PM Monitor: Vince Docktor</p>	<p>Thursdays Extended pose 12:00 PM to 3:00 PM Monitor: Bob Bohne.</p>	<p>Tuesdays 10:00 AM to 2:00 PM Monitor: Elizabeth H. MacDonald</p>

**WATCH FOR UPDATES - CANCELLED DUE TO COVID-19**

Please Note: Those who use oil paints should bring their own container(s) to remove used solvents. Odorless solvents only.

Thank you to all the PSC members who donate their time and expertise to make these workshops available to PSC members and the Philadelphia art community.




## Opportunities/Notices

As a courtesy to our non-PSC-member friends, in support of the Philadelphia artist community, we publish your notices, etc., free of charge. However, contributions to the PSC are always welcome. And, we will gladly consider your application for membership

[Contribute to the Sketch Club Here](#)   [Apply for PSC Membership Here](#)

Sketch Club member **Barbara's Tracy's** painting, "Morning Greetings", was featured on the Bucks County annual Art Of Preservation promotional materials this year. It is a virtual show and fundraiser with many fine local artists participating.

### *Art of Preservation* Online Fundraiser Through the Artist's Eyes Art Exhibit and Sale



*Barbara Tracy's Morning Greetings*

*"To keep our artists and community safe we will continue  
our physical distancing and bring you this beloved community event online"*

Launches **Saturday October 3rd, 2020 at 4pm**  
Online through the Holiday Season

**Mingle with the Artists at our Zoom Community Gathering Parties**  
**Saturday Oct 3, Nov 7, Dec 5 at 6pm**

**Featuring A Renowned Roster of Local Artists**  
Sandy Askey-Adams, Margaret Wiseheart Anderson, Alana Balogh, Harry Boardman, William Christine,  
Adriano Farinella, Ponder Goembel, Janet Hild, Deb Hoeffner, Joanne Isaac, Rachel Isaac,  
Andy Koch, Linda Koontz, Jim Lukens, Paul McGinn, Joanne Mazzeo, Anita Nolan, Jane Ramsey,  
Stephen Russell, Natalie Searl, Val Sivilli, Kathleen Sweeney, Nancy Talley, Marcia Theodoredis,  
Barbara Tracy, Karen Untermeyer/Visions, Bill Woodruff, Tom Zimmerman.


**Suggested Donations of \$25 to \$1000, and 75% of all Art Work Sales**  
**Benefit The Lord's Pantry and the Quakertown Food Pantry**

**Sponsored by Dale Koller Farms**

Access the For Sale Art Exhibit and Cocktail Parties Beginning September 8th  
[artofpreservation.org](http://artofpreservation.org) and [artofpreservationonline.com](http://artofpreservationonline.com)

Art of Preservation is a 501 (c) 3. Committed to the preservation and revitalization of our vibrant landscapes, historical sites, and the rich history of arts and culture in Upper Bucks

## Opportunities/Notices



GRAND OPENING

# ARETE

@SAHLCOMM

10.30.20

122 S. MAIN ST  
NEW HOPE, PA

Where Virtue and Art Collide

---

**GRAND OPENING NIGHT:**

ARETE @ SAHLCOMM  
10.30.20 | 4-7 PM

**Our Fall Featured Artists:**

**Barbara Tracy**  
*watercolor/acrylic artist*

**Doug Field**  
*Grateful Dead Artist*

**TSGT. Victor Rivera**  
*Battle Buddy Designer*

**Jeremiah Plyler**  
*Graffiti Artist*

*Arete = Virtue*  
*Art = Story*  
*SahlComm Brings Stories of Virtue to Life.*  
*Everyone has a story and through them we can*  
*heal humanity*  
[sahlcomm.com/Arete](http://sahlcomm.com/Arete)

You are Invited to the

---

Grand Opening of

---

Arete @ SahlComm

---



## Opportunities/Notices

From **Allyson Church**. Graduate Assistant at the Temple Contemporary gallery at the Tyler School of Art & The gallery is hosting a free weekly artist lecture series online. The lectures tend to be on Wednesday evenings (though not all are) and always start at 6 pm.

[Noel W Anderson- Sept 23rd](#)

[Sarah Kavage- Sept 30th](#)

[Cecilia Vicuña- October 5th](#)

[Indira Allegra- October 7th](#)

[Shannon Finnegan- October 13th](#)

[BFAMFAPHD- October 21st](#)

[Emma Nishimura- October 28th](#)

[ShiPu Wang- November 10th](#)

[Las Nietas de Nonó- November 11th](#) (this will be a bilingual event with Spanish and English interpreters)

[Shaun Leonardo- November 17th](#)

Gallery hours: By appointment: Wednesday, Friday, Saturday, Sunday: 1 PM to 5 PM

November 2020

## Opportunities/Notices

### Larry Francis Show: " Morning Into Night "

At:

SOMA New Art Gallery  
Carpenter Square Mall  
31 Perry Street  
Cape May N.J. 08204

September 19<sup>th</sup> — November 1st



"Dreaming" oil on canvas 30" x 42"



## Membership

### Stay in touch with current Sketch Club Members

Don't let sheltering in place prevent you from staying in touch with your Sketch Club friends and colleagues. Sketch Club members can access contact information for all current members. Go to the members only page at: <http://sketchclub.org/members-only-2/>. After you log-in with the password sent to you in your acceptance email you can click on the Membership Directory link to access members contact information. Non Sketch Club friends can find a listing of current members along with their websites if they have one at: <http://sketchclub.org/sample-page/current-members-contact-list/>:

### Recent New Sketch club Members

- Not a member? Your name should be here!

For a complete listing of Sketch Club members, go to: <http://sketchclub.org/sample-page/current-members-contact-list/>

### Not a PSC Member?: Join Now!

If you're reading this edition of the Portfolio and you're not a member of the PSC, you should consider joining the more than 200 other Philadelphia area artists who have. The PSC is one of the most active visual art venues serving center city Philadelphia. The PSC is a hands-on organization that offers its members the opportunity to participate in all aspects of creating and presenting work to the public. It presents over 20 scheduled group and solo exhibitions annually and offers a wide range of daily workshops. [Get info and an application here.](#)

If you are a member of the PSC, please feel free to share the Portfolio with your artist friends and encourage them to become members.

### Membership Renewal

You can check the status of your membership by going to the Current Members page on the PSC web-site: <http://sketchclub.org/sample-page/memberspace/>. All current members are listed. An asterisk (\*) means that the membership has expired but is within the 60-day grace period for renewal. Names in red are active links to the individual's web site.

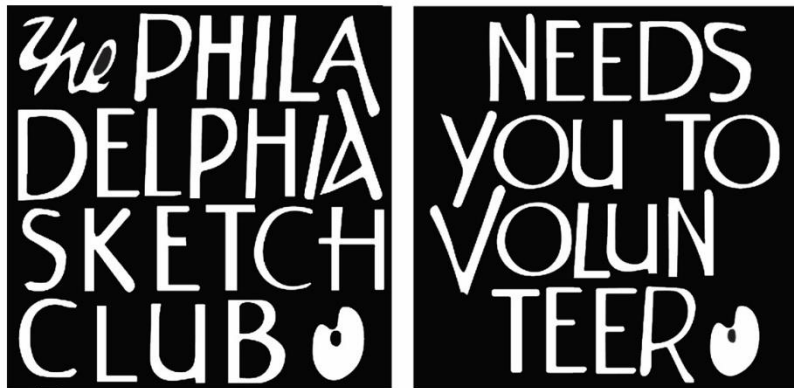
Renew Now! <http://sketchclub.org/annual-dues-payment/>

If you have any questions about your membership, please don't hesitate to contact us at [membership@sketchclub.org](mailto:membership@sketchclub.org) or call the office: 215-545-9298.

## Volunteer

### Be an Active Sketc Club Member; Volunteer!!

The Philadelphia Sketch Club is managed entirely by volunteers except for the gallery manager, housekeeping, and bookkeeper.



The PSC always needs volunteer members. Volunteering is one of the most important aspects of being a Sketch Club member and it is the one of the best ways to take advantage of the PSC. You'll be working with colleagues who share the same interests and helping the PSC provide unique services to the visual arts community. Sign up for an activity today.

Here are some of the activities that volunteers perform:

- Chair exhibitions
- Assist in hanging exhibitions
- Covering exhibition drop-offs and pick-ups
- Monitor workshops
- Assist with presentations
- Serve on the Board of Directors
- Serve as Key Circle volunteers
- Publish the Portfolio
- Manage the PSC web site
- Gallery coverage
- Graphics for Portfolio, PSC web site, social media
- Assist in every aspect of managing the club and providing member services

To get involved, contact:

Jackie Barnett

Volunteer Coordinator

Philadelphia Sketch Club

[jbarnett12@verizon.net](mailto:jbarnett12@verizon.net)



## Support the Sketch Club

### Contribute

Please consider making your tax-deductible contribution now. These funds will be put to good use providing enhanced services to our members and friends.

Membership dues cover only a small portion of the PSC's operating expenses. Competition for funding for arts organizations like the Sketch Club is increasingly competitive and total funding for the arts is shrinking. Your additional support will keep the PSC an active support for visual artists in the Metropolitan Philadelphia area. The Philadelphia Sketch Club is an IRS designated 501(c) (3) non-profit organization.

You can call the office at 215-545-9298, mail checks to the Sketch Club or visit the Contribute page of our Website.

Visit our **Contribute** page of our website to give online at:

<http://sketchclub.org/support-us/>

You can also support the PSC on an ongoing basis when you shop on Amazon. Go to: <http://smile.amazon.com/> and enter the Philadelphia Sketch Club in the Pick your own charitable organization box.

Your support makes it possible for the PSC to continue providing ongoing daily workshops and numerous annual gallery exhibitions.

### Like, Link & Share

If you're not following the Philadelphia Sketch Club on Facebook re-tweeting Sketch Club tweets yet, it's time that you did. We have well over 2000 Facebook followers. Get the word out about the Sketch Club. Please click the like button and share your comments and invite your friends to like our page.

Follow @PhilaSketchClub on Twitter, we have almost 400 followers. Please click the heart button and re-tweet our announcements.

Include links on your website, blogs and social media to The Philadelphia Sketch Club to increase traction across social media platforms.

Follow us on Facebook, Twitter and Instagram now!

Thanks to Don Brewer and Michelle Lockamy for managing PSC social media sites.



## Member Classifieds



Sketch Club member **Kathy Firpo** has moved to Florida and wants to donate her mat cutter to anyone in the Sketch Club. Contact Diane Hark at [dianeharkart@aol.com](mailto:dianeharkart@aol.com) for details.



Gallery hours: By appointment: Wednesday, Friday, Saturday, Sunday: 1 PM to 5 PM

November 2020

The Portfolio: The newsletter of the Philadelphia Sketch Club is published monthly. Editor, technical support and webmaster: Ken Weiner. Send your member news, announcements and corrections to [portfolio@sketchclub.org](mailto:portfolio@sketchclub.org). The due date for all materials is one week before the end of the month.

Back issues of the Portfolio are available at: <http://sketchclub.org/portfolio-archive/>

Thanks to PSC member volunteer **Ken Weiner** for his ongoing support of Sketch Club technology and communications functions.

#### The Philadelphia Sketch Club

235 S Camac Street  
Philadelphia, PA 19107  
(215) 545-9298  
<http://sketchclub.org/>  
[gallerymanager@sketchclub.org](mailto:gallerymanager@sketchclub.org)  
[info@sketchclub.org](mailto:info@sketchclub.org)

Gallery Manager: Kaylie Minzola

#### Officers:

- President: Richard Harrington
- Vice President: Kenneth Weiner
- Secretary: Elise Anzini
- Treasurer: William Patterson

#### Board of Directors

- Jacqueline Barnett
- Renard Edwards
- Stephen Iwanczuk
- Edward Pluciennik
- Charles F. Tarr
- Gail Williams