

Gallery hours: By appointment: Wednesday, Friday, Saturday, Sunday: 1 PM to 5 PM

December 2020

December 2020



Ken Weiner

Look for updated on-line activities in response to COVID-19: Page 2

This Month's Portfolio

Sketch Club Special Events	2
Main Gallery Schedule	8
Stewart Gallery Schedule	9
Sketch Club Activities	10
Sketch Club Open Workshop Schedule	15
Opportunities/Notices	16
Membership	19
Volunteer	20
Support the Sketch Club	21
Member Classifieds	21

Send your member news, announcements and corrections to: portfolio@sketchclub.org. The deadline for ALL submissions is 1-week before the end of the month.

Reminder: It's never too late. You can always renew your membership

You may pay online at <http://sketchclub.org/annual-dues-payment/> or mail your check to:

The Philadelphia Sketch Club
235 S. Camac St.
Philadelphia, PA 19107

For questions please contact the Gallery Manager at 215-545-9298 or email:

gallerymanager@sketchclub.org

Late Breaking News – See items that were submitted after the publication date. Go to:

<http://sketchclub.org/late-breaking-news/>

The PSC general email is: info@sketchclub.org

Sketch Club Special Events

Support the Sketch Club through Amazon Smile

Make free donations to the Sketch Club anytime you shop at Amazon Smile. Remember that anyone who purchases through Amazon can have Amazon make a contribution to the Club for most every purchase you make. Just log in and go to: smile.amazon.com -From there you can select the Philadelphia Sketch Club as your non-profit charity . Done. Then the Club receives a percentage of most every purchase you make. It is a painless way to contribute to the Club's welfare. Most purchases made on your mobile app and from Whole Foods qualify too! Go to smile.amazon.com/about/ to learn more.

Sheltering in Place, Social Distancing

You are all aware of the myriad closings, cancellations, and postponements by all organizations in response to the COVID-19 pandemic. The Sketch Club intends to comply with all required social conventions. For the foreseeable future, we will not be holding any events at the PSC facility.

Our gallery manager, Kaylie, will be working from home during our scheduled hours office hours: Wednesday and Friday 1 PM to 5 PM. She can be reached by email at gallerymanager@sketchclub.org. You

can also leave messages on the PSC phone: 215-545-9298 and your call will be returned as quickly as possible.



Stay in Touch with On-Line Resources

- The Sketch Club Critique Group: <https://www.facebook.com/groups/PSCCritique>
- The Sketch Club Open Gallery: <https://sketchclub.org/sketch-club-open-gallery/>
- The Sketch Club's web site: sketchclub.org
- Our Facebook page: <https://www.facebook.com/thesketchclub/>
- Instagram: <https://www.instagram.com/philadelphiasketch/>
- Twitter: <https://twitter.com/PhilaSketchClub>
- Members: Stay in touch with other PSC colleagues. For contact information, go to the members only page at: <http://sketchclub.org/members-only-2/>. See Stay in touch with current Sketch Club Members in the members section below for instructions.
- Non Sketch Club friends can find a listing of current members names and business websites if they have one at: <http://sketchclub.org/sample-page/current-members-contact-list/>.

Sketch Club Special Events

The Philadelphia Sketch Club Critique Face Book group

Calling all Sketch Club Members:

Join your Club colleagues online at the "Philadelphia Sketch Club Critique"-- a Closed group for Active PSC members only on FaceBook. You can also find a link on our website and on the PSC's main FaceBook page. Basically, the plan works like this:

- Active members go to the new "Philadelphia Sketch Club Critique" page and request access, which is available to all Club members in good standing.
- Once in post your work and watch as other members' post their artwork for critique.
- This FaceBook Group is private; this means that as Members submit their work others are invited to critique each other in a professional and respectful way.

Colleagues, please join in and contribute to your online art community. We all miss the camaraderie we enjoy at the Club house. The "Philadelphia Sketch Club Critique" is a chance to get together online until we can gather once more around the punch bowl and raise a toast, "to the Sketch Club, past, present and future."

More details will be posted within the group including the option to be considered for a monthly "Highlights", a curated online gallery to be published on our external site/Instagram/Twitter channels.

Check-out the group's Facebook Page: <https://www.facebook.com/groups/PSCCritique>

Critique: "Paris Street; Rainy Day"

by the French artist Gustave Caillebotte, -- an artist's perspective.

By: **Don Gauger** -- inaugural champion for the online PSC critique.

"Paris Street; Rainy Day" (French: Rue de Paris, temps de pluie) is a large 1877 oil painting by the French artist Gustave Caillebotte (1848–1894), and is his best-known work.

Reference: https://en.wikipedia.org/wiki/Paris_Street%3B_Rainy_Day

The artwork itself: https://upload.wikimedia.org/wikipedia/commons/thumb/1/17/Gustave_Caillebotte_-_Paris_Street%3B_Rainy_Day_-_Google_Art_Project.jpg/1014px-Gustave_Caillebotte_-_Paris_Street%3B_Rainy_Day_-_Google_Art_Project.jpg

(Continued)



Sketch Club Special Events

Discussion: "Paris Street; Rainy Day"

Discussions about this wonderful piece of art tend to emphasize two major themes:

1. A gloomy existential estrangement of the people on the rainy street
2. The impact of the camera on the painting style's soft focus in the foreground, sharp focus in the mid-ground, and loss-of-focus in the background.

This critique is a new interpretation of this painting from my perspective as an artist.

I think Gustave Caillebotte is masterfully demonstrating his command of Leonardo da Vinci's three principles of perspective:

- linear perspective
- atmospheric perspective
- color perspective

Before I discuss how these three perspectives appear, there is an important concept I need to mention; Sfumato, the painting technique for softening the transition between colors, mimicking an area beyond what the human eye is focusing on, or the out-of-focus plane. Leonardo da Vinci described sfumato as "without lines or borders, in the manner of smoke or beyond the focus plane".

In "Paris Street; Rainy Day" we see the linear perspective of the street and buildings. We see the atmospheric perspective as details fade into the distance; the building windows become mere suggestions at their farthest points. We see color perspective where a spectrum of color blurs into a bluish haze in the background. Notice the green lamp posts in the foreground, the redness of the brick walls which appear somewhat in the mid-ground; look for any bright colors in the background, there are none.

You may ask, what about the prominent couple, they are somewhat blurry. This is often attributed to the effect of a camera focused on the middle ground. I suspect this is Caillebotte demonstrating another of Leonardo's principles, painting with sfumato. Leonardo had strong opinions about portraits done with sharp outlines. His poor relationship with Michelangelo may have been in part due to him trying to mentor the young artist in not painting portraits with sharp outlines. Leonardo's use of sfumato in the portrait of the Mona Lisa is what gives it its magical elusive charm. Does anyone say the Mona Lisa is "out of focus"?

If we consider the care with which Caillebotte paints the portraits of the couple in the foreground, considering if his is demonstrating mastery of sfumato, then the couple are more in-focus (draw more of our attention) than most any other feature. As for foreground details, look at the gold studs on the man's shirt and the woman's diamond earring. Look at the umbrella's ribs.

If this idea of sfumato adds to the "detail" of perspective in the foreground (we would not see such subtle changes of light and dark further away), then what of the mid-ground figures? They are sketched with quicker outlines. The outlines suggest they are more in focus if sharp-outline is equated with focus; but there is a lack of subtle detail found in that mid-ground.

Sketch Club Special Events

Discussion: "Paris Street; Rainy Day" (continued)

The background figures are mere suggestions.

As for the existential theme of isolation, I would argue that it is the baseline point of perspective, that is, people are busying themselves in their personal affairs on a rainy day that does not invite too much reflection. But again, let us look to Leonardo for a possible new perspective. Leonardo was a student of the science of optics and spent a lifetime designing, conducting and recording various optic experiments. These impacted his choices in his artwork.

The question of optics in mind, what might Caillebotte be displaying in his painting? There is a phenomena where, at the right angle, and in certain humid conditions, sunlight breaks into prismatic bands of light. In fact, this scene is probably in the evening based on the activities seen, and it is raining, perfect conditions for a rainbow. At times a rainbow is not visible, but the observer may be within the shifting bands of prismatic light. The shifting prismatic-light effects of an unseen sunset filtered through rainy mists might happen as well. To someone walking on the street who became aware of suddenly changing optics, a rather gray day could be transformed if there was a sudden illumination of the streets in prismatic light, a clear light shifting subtly first pale rose then faint gold. Look at the color of the sky in the background.

If in deed this is what is happening, a fleeting change of the optics because of prismatic light in the "golden hour" of the evening, then this couple may have been drawn away from their everyday thoughts and are experiencing a fleeting transcendent moment. This is what I think the master painter Calliebotte, with plenty of suggestions he is a student of Leonardo's teachings, is portraying. The painting charms because we are witnessing a chance "butterfly" not just a "wet brick".

Sketch Club On-Line Gallery: **Call for Work!**

There's always room for more work: Submit Now!

The Sketch Club is hosting an on-going open gallery at <http://sketchclub.org/sketch-club-open-gallery/>. This gallery is open to PSC members and non-members.

Submit up to 4 images of your work or of yourself working along with a very brief description to portfolio@sketchclub.org.

Include for your work: Your name; Title; size; and medium.

For a photos of yourself include: Who you are and a brief description of the the image.

Gallery hours: By appointment: Wednesday, Friday, Saturday, Sunday: 1 PM to 5 PM

December 2020

Sketch Club Special Events

Zoom Workshops



We are planning additional Zoom workshops. Watch for email update for details here and at: sketchclub.org

If you have a creative inspiration for an on-line workshop, please contact us at the PSC office and we will work with you to make it available to our community.

Sketch Club Special Events

While You Were Away: Sketch Club Maintenance

Since the start of the COVID-19 lock-down that started in March, the Sketch Club facility was closed to all of our scheduled activities. However, there has been much activity. **Chuck Tarr**, Board member and House Chair assisted by Sketch Club member **Tom Kohlmann**, Facilities Manager have been busy managing the many needed repairs and upgrades necessary to keep our ageing Sketch Club building up-to-date and safe for our members and friends.

Here are some of the highlights:

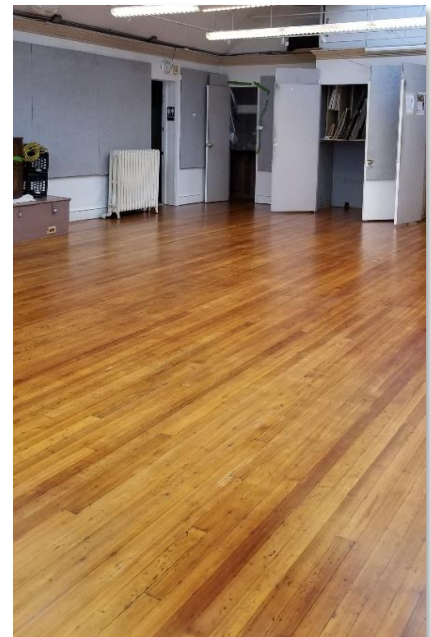
- Repair of roof leak and repair Gallery cracks in ceiling and upper walls and area was painted
- Replace AC circuit board
- Refinish upstairs gallery floor
- Paint upstairs gallery lockers
- Paint upstairs gallery storage closet interiors
- Repair ceiling tiles in the upstairs storage area
- Annual service of heating and AC units
- Major servicing of water/sewer services
- Lighting upgrade in Rathskeller
- Lighting upgrade in back stairway
- Lighting upgrade in water heater utility closet
- Numerous other refurbishing, repairs, and required services

Chuck Tarr, Tom Kohlmann, and PAFA graduate Roger Chavez completed refinishing of the Upstairs Gallery floor. This back-breaking work is a major effort; sanding/scraping the surface and applying multiple coats of finish.

This required maintenance of our Sketch Club home is costly. We ask our members and friends to help keep the PSC financially healthy. Friends, please consider contributing to our maintenance fund. Members, please consider financial support beyond membership. [Make an On-line Contribution](#)



Upstairs Gallery Floor Refinish - Before



Upstairs Gallery Floor Refinish - Finished

Gallery hours: By appointment: Wednesday, Friday, Saturday, Sunday: 1 PM to 5 PM

December 2020

Main Gallery Schedule

[See the Sketch Club Open Gallery](#)

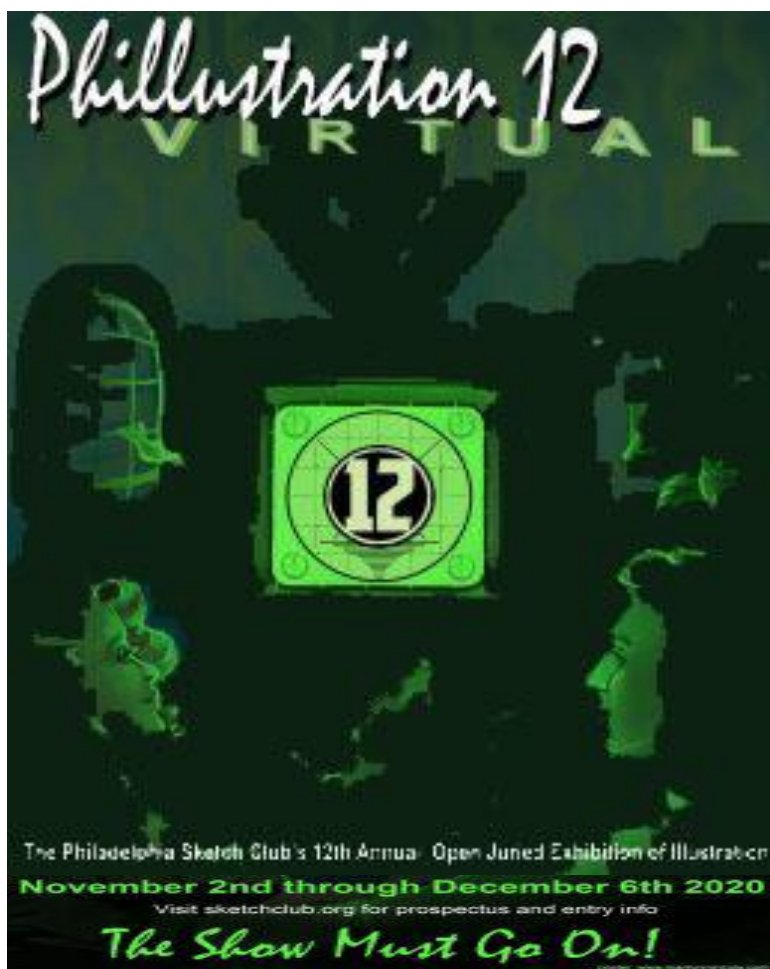
[See the 2020 Exhibition Schedule](#)

[Important Dates for all PSC Activities](#)

[See the On-line Gallery Here](#)

See the Phillustration 12 Virtual Video

A video montage of this years Phillustration
12 accepted artists crafted by:
PSC Gallery Manager, **Kaylie Minzola**



Awards

First Place:

Joe DeVito *Doc Savage Shattered*

Second Place:

Gil Cohen *Wounded Aboard*

Third Place:

Lisa Falkenstern *I'm Late*

First Place Self Promotion:

Dave Zeggart *Lennon*

First Place Book:

Glenn Zimmer *Bucket Fillers pg. 20_21*

Honorable Mention:

Wieslawa Lagenfeld *Kristina's Menagerie*

Honorable Mention:

Deb Hoefner *Night Owl*

Honorable Mention:

Isabelle Staub *Quarantea*

[See the On-line Gallery Here](#)

Gallery hours: By appointment: Wednesday, Friday, Saturday, Sunday: 1 PM to 5 PM

December 2020

Stewart Gallery Schedule



**Exhibition space in
the Stewart Gallery
is available for PSC
Members!**

Reserve the gallery by
contacting our
Exhibition Coordinator:
exhibitions@sketchclub.org

The space is \$150 for a
month. Members can
show once in the Stewart
Gallery per year.

[See the Sketch Club Open Gallery](#)
[See the 2020 Exhibition Schedule](#)
[Important Dates for all PSC Activities](#)

Sketch Club Activities

Critique Night: TBD

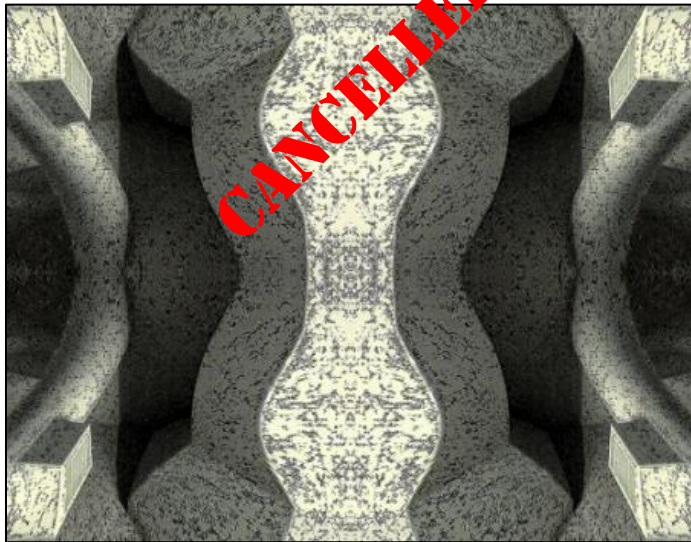
Open to PSC Members and Non-Members

Critique Night is held in the Library of the Sketch Club every third Wednesday beginning at 7 PM. Bring work you have finished, work in progress, or just sketches for work you're planning! Photos, digital work, drawings, all mediums are welcome; we can project digital images on a screen for review, so you have the option to show work that may be too big or too heavy to transport to the Club. There is no one individual directing the critique, just your fellow artists and peers. Facilitated/monitored by Rich Harrington, PSC President



Thanks to PSC member volunteer **Rich Harrington** for organizing and monitoring this event

Photo Circle: TBD



We will discuss new group activities and possibilities for expansion. The Photo Circle meets every 2nd Thursday at 6:30 PM. You can contact Steve anytime at stphniwan@gmail.com or 215-300-9192 (cell). **Steve Iwanczuk**, Photo Circle Monitor and Member of Philadelphia Sketch Club Board of Directors.

Thanks to PSC member volunteer **Steve Iwanczuk** for organizing and monitoring this event.

Art Natters: Members News

Sketch Club member **Nancy Herman** is working on illustrations for a children's book about a haughty cat who doesn't like people wearing masks because she can't tell what they are thinking. Here are two images.



Cat Escapes



Cat Missing

Sketch Club member **Laura Marconi's** painting "Deconstruction #1" is included in the 2020 Fame Fellowship Annual Members Exhibition

2020 FAME
Fellowship Annual Members
Exhibition
Juror: Rebecca O'Leary
NOVEMBER 7-28, 2020

HOT-BED GALLERY

723 Chestnut Street, Philadelphia
by Appointment
www.hotbedphilly.com

FAME 2020—A John Thornton
Film!

<http://fellowshippafa.org>

See more of Laura's work at:
marconilaura.com



"Deconstruction #1" Oil on Canvas 40" X 40"

Art Natters: Members News

Sketch Club member **Doris Peltzman** has been a busy artist in spite of the challenges facing all of us during this COVID pandemic.

Wayne Art Center has 2 of her paintings exhibited in the 2020 Wayne Members Virtual Exhibition

She has 2 paintings at Artists Equity Fall Juried Exhibition In the galleries at Cheltenham Art Center Also can be viewed online at Artist Equity website

Medford Art Center's Small Works Exhibition has 5 inks on yupo paintings on display and available for sale. Day Lilies 8" x 8" inks on yupo won an Honorable Mention Award. This also can be seen online at Medford Art Centers website



Artist Equity Fall Exhibition: Unstoppable2020
Selfie: My Corono. World/ Unstoppable
Oil on yupo 8"by 8"



"Farmer's Market Bouquet at End of Summer" Ink on yupo
Wayne Art Center Members Exhibition, 2020



"Day Lilies" Medford Art Center Small Works Exhibit
Honorable Mention Award: Inks on yupo 8"x8"

Art Natters: Members News

Sketch Club member **Chris Fowler's** photograph, "Sheep May Safely Graze", has been accepted into the Photography 2020 Online Exhibition of the Las Laguna Gallery, in Laguna Beach, CA.

The show runs from
December 3rd-31st. The
web address is:
www.laslagunagallery.com.



Sheep May Safely Graze

Sketch Club member **Brenda L Bechtel** has been working the fields and gardens, blessed with glorious Cape Cod weather, the Moon and Stars, and a headlamp that aids me to find my way back to the house after sun has set and coyotes begin to prowl. So much to be done! Soon, winter, and I shall be the happiest ever, to be in Self-Creativity Isolation in my Studio! I count my Blessings in this Season of Beauty and send Inspired Energy!

Brenda's website
<http://www.BrendaLBechtel.com>



"Wishing on a Star", pastel

Gallery hours: By appointment: Wednesday, Friday, Saturday, Sunday: 1 PM to 5 PM

December 2020

Art Natters: Members News

Sketch Club member **Aida Birritteri**

5 High Ct.; High Bridge, NJ 08829; 908-892-4923

See more of Aida's work: aidawatercolors.com

Catherine Lorrillard Wolfe Art Club, NY, NY

1st Annual Associates/Non-Members Online
Show 2020.

Exhibit Dates: October 1st through December
31st.

"NYC Blues" Awarded 2nd Place in the
Watermedia Category.

Art of the Rivertowns

Juried online show sponsored by Rivertown
Magazine of Bucks County, PA October through
December 31st 2020.

Sold: "Lots of Sticks Can't Wait Till Spring"

Philadelphia/Tri State Artist Equity Association "Unstoppable
71st Anniversary Annual Fall Juried Show" Cheltenham

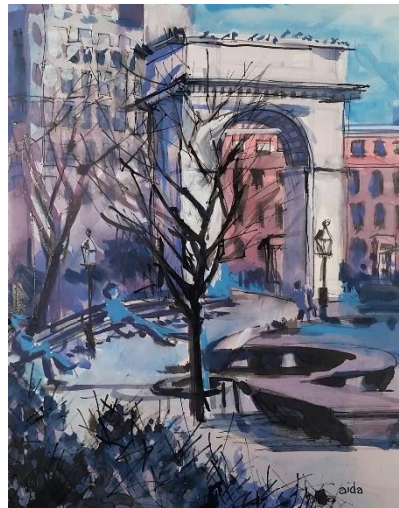
Center for the Arts Cheltenham, PA

Exhibit Dates: Nov. 22nd through December 19th, 2020.

"Schuylkill Boathouse" was juried into the show:



"Schuylkill Boathouse" Ink on 140lb hot press 16" X 20"



"NYC Blues" Watercolor, Ink and
Gouache on 300lb hot press – 22" X 26"



"Lots of Sticks Can't Wait Till
Spring" Watercolor and INK on
300 lb. hot press 22" X 26"



"Through the Schuylkill"
Ink on 140lb hot press – 16" X 20"

Woman/o Gallery

Gallery Director

Diane Batson-Smith

"Women and Nature," featuring five women artists
Exhibit Dates: September 17 through October 15,
2020.

Sold: "Through the Schuylkill"

Gallery hours: By appointment: Wednesday, Friday, Saturday, Sunday: 1 PM to 5 PM

December 2020

Sketch Club Open Workshop Schedule

All workshops are open to the public. There is no need to register before attending. You do NOT have to be a member of the Philadelphia Sketch Club to participate in the workshops. Our workshops are open to anyone who is interested in drawing, painting or printmaking. All skill levels are welcome. Fees: Model workshops: \$8/session members, \$9/session for non-PSC members; Printmaking workshop: \$10/session; All workshops \$6 for full-time students. Monitored by PSC members.

Life Model	Costumed Model	Printmaking
<p>Mondays – 5, 20, and 40-minute poses 5:30 PM-9:30PM Monitors: Jackie Barnett and Tom Kohlmann</p> <p>Tuesdays – Extended pose: 12:00 PM to 3:00 PM Monitor: Jacqueline Barnett</p> <p>Wednesdays – Extended pose: 6:30 to 9:30 PM Monitor: Vince Docktor</p> <p>Saturdays – Extended pose: 9:30 AM to 12:30 PM Monitor: Vince Docktor</p>	<p>Thursdays Extended pose 12:00 PM to 3:00 PM Monitor: Bob Bohne.</p>	<p>Tuesdays 10:00 AM to 2:00 PM Monitor: Elizabeth H. MacDonald</p>

WATCH FOR UPDATES - CANCELLED DUE TO COVID-19

Please Note: Those who use oil paints should bring their own container(s) to remove used solvents. Odorless solvents only.

Thank you to all the PSC members who donate their time and expertise to make these workshops available to PSC members and the Philadelphia art community.

Opportunities/Notices

As a courtesy to our non-PSC-member friends, in support of the Philadelphia artist community, we publish your notices, etc., free of charge. However, contributions to the PSC are always welcome. And, we will gladly consider your application for membership

[Contribute to the Sketch Club Here](#) [Apply for PSC Membership Here](#)

Jean Plough: Online Artist Interview

December 3 at 7:00 PM

Virtually FREE

<https://zoom.us/j/5019216235>

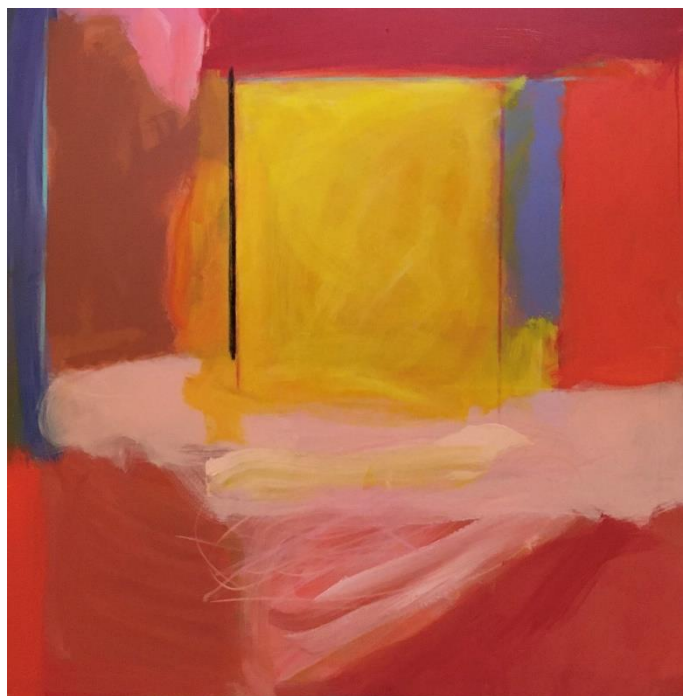
ARTSHOW IS A SERIES OF ARTIST INTERVIEWS HOSTED by ALLENS LANE ART CENTER'S EXECUTIVE DIRECTOR, CRAIG STOVER.

One of the best parts of our gallery exhibition programs are the receptions and one of the things people most ask for is for the artist to take a moment to talk about their work. We've taken the best of that and created a brand-new virtual program that allows you to get immersed in our local arts community from the comfort of your home. ArtShow is broadcast from the Carolyn and Howard Alber Gallery which showcases a wide variety of artists from our region.

You'll learn about their interests, what motivates them to create, how they got to where they are and much more. It's more than just an interview, it's a one-hour gallery reception complete with a Q&A from audience members (via Zoom) with some of the most creative people in our community. All of these streamed ArtShow's will be recorded and are BYOB

Click here to get your zoom login code for this interview:

<https://allenslane.org/art-show/>



Orange Crush, 50X50", Acrylic paint on canvas

Opportunities/Notices

Sketch Club member **Barbara's Tracy's** painting, "Morning Greetings", was featured on the Bucks County annual Art of Preservation promotional materials this year. It is a virtual show and fundraiser with many fine local artists participating.

Art of Preservation Online Fundraiser Through the Artist's Eyes Art Exhibit and Sale



Barbara Tracy's Morning Greetings

*"To keep our artists and community safe we will continue
our physical distancing and bring you this beloved community event online"*

Launches **Saturday October 3rd, 2020 at 4pm**

Online through the Holiday Season

Mingle with the Artists at our Zoom Community Gathering Parties

Saturday Oct 3, Nov 7, Dec 5 at 6pm

Featuring A Renowned Roster of Local Artists

Sandy Askey-Adams, Margaret Wiseheart Anderson, Alana Balogh, Harry Boardman, William Christine, Adriano Farinella, Ponder Goembel, Janet Hild, Deb Hoeffner, Joanne Isaac, Rachel Isaac, Andy Koch, Linda Koontz, Jim Lukens, Paul McGinn, Joanne Mazzeo, Anita Nolan, Jane Ramsey, Stephen Russell, Natalie Searl, Val Sivilli, Kathleen Sweeney, Nancy Talley, Marcia Theodoredis, Barbara Tracy, Karen Untermyer/Visions, Bill Woodruff, Tom Zimmerman.


**Suggested Donations of \$25 to \$1000, and 75% of all Art Work Sales
Benefit The Lord's Pantry and the Quakertown Food Pantry**

Sponsored by Dale Koller Farms

Access the For Sale Art Exhibit and Cocktail Parties Beginning September 8th
artofpreservation.org and artofpreservationonline.com

Art of Preservation is a 501 (c) 3. Committed to the preservation and revitalization of our vibrant landscapes, historical sites, and the rich history of arts and culture in Upper Bucks

Opportunities/Notices



GRAND OPENING

ARETE

@SAHLCOMM

10.30.20

122 S. MAIN ST
NEW HOPE, PA

Where Virtue and Art Collide

GRAND OPENING NIGHT:

ARETE @ SAHLCOMM
10.30.20 | 4-7 PM

Our Fall Featured Artists:

Barbara Tracy
watercolor/acrylic artist

Doug Field
Grateful Dead Artist

TSGT. Victor Rivera
Battle Buddy Designer

Jeremiah Plyler
Graffiti Artist

Arete = Virtue
Art = Story
SahlComm Brings Stories of Virtue to Life.
Everyone has a story and through them we can
heal humanity
sahlcomm.com/Arete

You are Invited to the

Grand Opening of

Arete @ SahlComm

Membership

Stay in touch with current Sketch Club Members

Don't let sheltering in place prevent you from staying in touch with your Sketch Club friends and colleagues. Sketch Club members can access contact information for all current members. Go to the members only page at: <http://sketchclub.org/members-only-2/>. After you log-in with the password sent to you in your acceptance email you can click on the Membership Directory link to access members contact information. Non Sketch Club friends can find a listing of current members along with their websites if they have one at: <http://sketchclub.org/sample-page/current-members-contact-list/>:

Recent New Sketch club Members

- Not a member? Your name should be here!

For a complete listing of Sketch Club members, go to: <http://sketchclub.org/sample-page/current-members-contact-list/>

Not a PSC Member?: Join Now!

If you're reading this edition of the Portfolio and you're not a member of the PSC, you should consider joining the more than 200 other Philadelphia area artists who have. The PSC is one of the most active visual art venues serving center city Philadelphia. The PSC is a hands-on organization that offers its members the opportunity to participate in all aspects of creating and presenting work to the public. It presents over 20 scheduled group and solo exhibitions annually and offers a wide range of daily workshops. [Get info and an application here.](#)

If you are a member of the PSC, please feel free to share the Portfolio with your artist friends and encourage them to become members.

Membership Renewal

You can check the status of your membership by going to the Current Members page on the PSC web-site: <http://sketchclub.org/sample-page/memberspace/>. All current members are listed. An asterisk (*) means that the membership has expired but is within the 60-day grace period for renewal. Names in red are active links to the individual's web site.

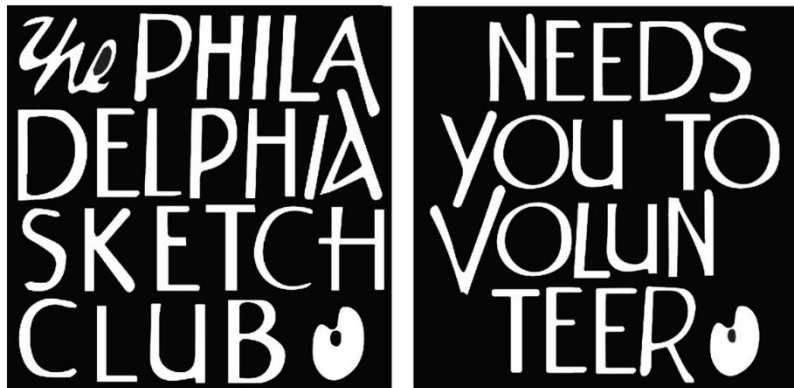
Renew Now! <http://sketchclub.org/annual-dues-payment/>

If you have any questions about your membership, please don't hesitate to contact us at membership@sketchclub.org or call the office: 215-545-9298.

Volunteer

Be an Active Sketc Club Member; Volunteer!!

The Philadelphia Sketch Club is managed entirely by volunteers except for the gallery manager, housekeeping, and bookkeeper.



The PSC always needs volunteer members. Volunteering is one of the most important aspects of being a Sketch Club member and it is the one of the best ways to take advantage of the PSC. You'll be working with colleagues who share the same interests and helping the PSC provide unique services to the visual arts community. Sign up for an activity today.

Here are some of the activities that volunteers perform:

- Chair exhibitions
- Assist in hanging exhibitions
- Covering exhibition drop-offs and pick-ups
- Monitor workshops
- Assist with presentations
- Serve on the Board of Directors
- Serve as Key Circle volunteers
- Publish the Portfolio
- Manage the PSC web site
- Gallery coverage
- Graphics for Portfolio, PSC web site, social media
- Assist in every aspect of managing the club and providing member services

To get involved, contact us at: info@sketchclub.org

Support the Sketch Club

Contribute

Please consider making your tax-deductible contribution now. These funds will be put to good use providing enhanced services to our members and friends.

Membership dues cover only a small portion of the PSC's operating expenses. Competition for funding for arts organizations like the Sketch Club is increasingly competitive and total funding for the arts is shrinking. Your additional support will keep the PSC an active support for visual artists in the Metropolitan Philadelphia area. The Philadelphia Sketch Club is an IRS designated 501(c) (3) non-profit organization.

You can call the office at 215-545-9298, mail checks to the Sketch Club or visit the Contribute page of our Website.

Visit our **Contribute** page of our website to give online at:

<http://sketchclub.org/support-us/>

You can also support the PSC on an ongoing basis when you shop on Amazon. Go to: <http://smile.amazon.com/> and enter the Philadelphia Sketch Club in the Pick your own charitable organization box.

Your support makes it possible for the PSC to continue providing ongoing daily workshops and numerous annual gallery exhibitions.

Like, Link & Share

If you're not following the Philadelphia Sketch Club on Facebook re-tweeting Sketch Club tweets yet, it's time that you did. We have well over 2000 Facebook followers. Get the word out about the Sketch Club. Please click the like button and share your comments and invite your friends to like our page.

Follow @PhilaSketchClub on Twitter, we have almost 400 followers. Please click the heart button and re-tweet our announcements.

Include links on your website, blogs and social media to The Philadelphia Sketch Club to increase traction across social media platforms.

Follow us on Facebook, Twitter and Instagram now!

Thanks to Don Brewer and Michelle Lockamy for managing PSC social media sites.



Member Classifieds



Sketch Club member **Kathy Firpo** has moved to Florida and wants to donate her mat cutter to anyone in the Sketch Club. Contact Diane Hark at dianeharkart@aol.com for details.



Gallery hours: By appointment: Wednesday, Friday, Saturday, Sunday: 1 PM to 5 PM

December 2020

The Portfolio: The newsletter of the Philadelphia Sketch Club is published monthly. Editor, technical support and webmaster: Ken Weiner. Send your member news, announcements and corrections to portfolio@sketchclub.org. The due date for all materials is one week before the end of the month.

Back issues of the Portfolio are available at: <http://sketchclub.org/portfolio-archive/>

Thanks to PSC member volunteer **Ken Weiner** for his ongoing support of Sketch Club technology and communications functions.

The Philadelphia Sketch Club

235 S Camac Street
Philadelphia, PA 19107
(215) 545-9298
<http://sketchclub.org/>
gallerymanager@sketchclub.org
info@sketchclub.org

Gallery Manager: Kaylie Minzola

Officers:

- President: Richard Harrington
- Vice President: Kenneth Weiner
- Secretary: Elise Anzini
- Treasurer: William Patterson

Board of Directors

- Jacqueline Barnett
- Renard Edwards
- Stephen Iwanczuk
- Edward Pluciennik
- Charles F. Tarr
- Gail Williams