

Gallery hours: By appointment: Wednesday, Friday, Saturday, Sunday: 1 PM to 5 PM

February 2021



Ironworkers Noontime by Thomas Anshutz

Rich Harrington: Iron workers Noontime is considered the most notable piece of Anshutz's career. It was first displayed at the Philadelphia Sketch Club in 1881 and is now in the permanent collection of The Fine Arts Museum of San Francisco.

This Month's Portfolio

Sketch Club Special Events	2
Sketch Club Critique Group	6
Main Gallery Schedule	8
Stewart Gallery Schedule	11
Sketch Club Activities	12
Sketch Club Open Workshop Schedule	21
Opportunities/Notices	22
Membership	27
Volunteer	28
Support the Sketch Club	29
Member Classifieds	29

Send your member news, announcements and corrections to: portfolio@sketchclub.org. The deadline for ALL submissions is 1-week before the end of the month.

Reminder: It's never too late. You can always renew your membership

You may pay online at <http://sketchclub.org/annual-dues-payment/> or mail your check to:

The Philadelphia Sketch Club

235 S. Camac St.

Philadelphia, PA 19107

For questions please contact the Gallery Manager at 215-545-9298 or email:

gallerymanager@sketchclub.org

Late Breaking News – See items that were submitted after the publication date. Go to:

<http://sketchclub.org/late-breaking-news/>

The PSC general email is: info@sketchclub.org

Sketch Club Special Events

Online Zoom Workshop Update:

The January 1, 2021: New Year Zoom Live Model Workshop was a great success!

Thank you to the more than 30 artists who attended the Sketch Club's New Year Zoom Live Model Workshop. The workshop offered six 20-minute poses during the two-hour live session.

Gratified participants contributed more than \$200 in financial support for the Sketch Club.



Workshop setup featuring Sketch Club's gallery manager, Kaylie Minzola.

Many thanks to Kaylie Minzola, the Sketch Club's gallery manager who is an experienced model, for offering to sit for this event. Thanks also to Sketch Club president, Rich Harrington for moderating and to Sketch Club's vice president, Ken Weiner for technical support.

More Zoom Workshops

We are planning additional Zoom workshops. Watch for email updates for details here and at: sketchclub.org

If you have a creative inspiration for an on-line workshop, please contact us at the PSC office and we will work with you to make it available to our community.

Sketch Club Special Events

Sheltering in Place, Social Distancing

You are all aware of the myriad closings, cancellations, and postponements by all organizations in response to the COVID-19 pandemic. The Sketch Club intends to comply with all required social conventions. For the foreseeable future, we will not be holding any events at the PSC facility.

Our gallery manager, Kaylie, will be working from home during our scheduled hours office hours: Wednesday and Friday 1 PM to 5 PM. She can be reached by email at gallerymanager@sketchclub.org. You

can also leave messages on the PSC phone: 215-545-9298 and your call will be returned as quickly as possible.



Stay in Touch with On-Line Resources

- The Sketch Club Critique Group: <https://www.facebook.com/groups/PSCCritique>
- The Sketch Club Open Gallery: <https://sketchclub.org/sketch-club-open-gallery/>
- The Sketch Club's web site: sketchclub.org
- Our Facebook page: <https://www.facebook.com/thesketchclub/>
- Instagram: <https://www.instagram.com/philadelphiasketch/>
- Twitter: <https://twitter.com/PhilaSketchClub>
- Members: Stay in touch with other PSC colleagues. For contact information, go to the members only page at: <http://sketchclub.org/members-only-2/>. See Stay in touch with current Sketch Club Members in the members section below for instructions.
- Non Sketch Club friends can find a listing of current members names and business websites if they have one at: <http://sketchclub.org/sample-page/current-members-contact-list/>.

Sketch Club Special Events

Sketch Club Courtyard visitor



Although human visitation to the PSC is a no-no, we have an occasional visitor to our Courtyard. Here's a photo of Falcon perched on a branch of our Red Bud Tree in our courtyard
Photo: Sketch Club member and custodian par-excellence, **Tom Kohlmann**.

Tom and PSC Board member **Chuck Tarr** assisted by PAFA graduate **Roger Chavez** spend many hours at the PSC to take care of our historic building.

Sketch Club On-Line Gallery: **Call for Work!**

There's always room for more work: Submit Now!

The Sketch Club is hosting an on-going open gallery at <http://sketchclub.org/sketch-club-open-gallery/>. This gallery is open to PSC members and non-members.

Submit up to 4 images of your work or of yourself working along with a very brief description to portfolio@sketchclub.org.

Include for your work: Your name; Title; size; and medium.

For a photos of yourself include: Who you are and a brief description of the the image.

Support the Sketch Club through Amazon Smile

Make free donations to the Sketch Club anytime you shop at Amazon Smile. Remember that anyone who purchases through Amazon can have Amazon make a contribution to the Club for most every purchase you make. Just log in and go to: smile.amazon.com -From there you can select the Philadelphia Sketch Club as your non-profit charity . Done. Then the Club receives a percentage of most every purchase you make. It is a painless way to contribute to the Club's welfare. Most purchases made on your mobile app and from Whole Foods qualify too! Go to smile.amazon.com/about/ to learn more.

Sketch Club Special Events

Ongoing Facilities Renovation

Now that Refinishing the Upstairs Gallery floor is complete our crew has turned its attention to refinishing the Main Gallery stairwell.



Left to Right, Tom, Roger, Chuck

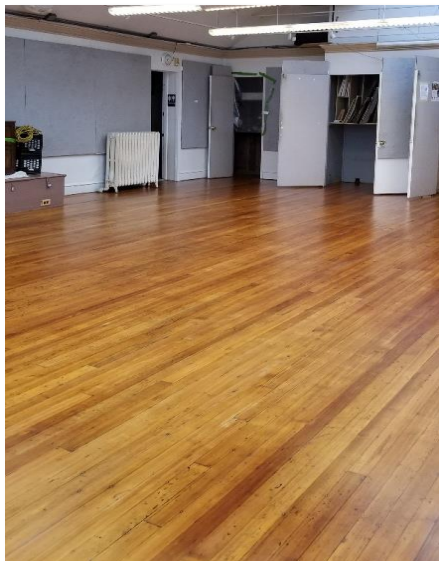
Our thanks to **Chuck Tarr**, **Tom Kohlmann**, and PAFA graduate **Roger Chavez**. This back-breaking work is a major effort; sanding/scraping the surface and applying multiple coats of finish.

Additional work recently completed include:

- Reorganizing the ratskeller (basement)
- Repair of roof leak and repair Gallery cracks in ceiling and upper walls and area was painted
- Replace AC circuit board
- Paint upstairs gallery lockers
- Paint upstairs gallery storage closet interiors
- Repair ceiling tiles in the upstairs storage area
- Annual service of heating and AC units
- Major servicing of water/sewer services
- Lighting upgrade in Rathskeller
- Lighting upgrade in back stairway
- Lighting upgrade in water heater utility closet
- Numerous other refurbishing, repairs, and required services

We need your help: This required maintenance of our Sketch Club home is costly. We ask our members and friends to help keep the PSC financially healthy. Friends, please consider contributing to our maintenance fund. Members, please consider financial support beyond membership.

Contribute Now! [Make an On-line Contribution](#)



Upstairs Gallery Floor Refinish - Finished

Sketch Club Critique Group

The Sketch Club Critique FaceBook Group

Curator's Pick – Don Gauger

The concept of "Virtual Reality" (VR) artist tools is covered nicely in a BBC online article "*Google's Tilt Brush VR painting app goes open source*".

Be sure to watch the video "3D painting makes audiences part of the art" further down the page to witness 3-dimensional painting demonstrations.

Link: <https://www.bbc.com/news/technology-55826249>



Join the Critique Facebook Group

Join your Club colleagues online at the "Philadelphia Sketch Club Critique"-- a Private group for Active PSC members only on FaceBook.

Colleagues, please join in and contribute to your online art community. We all miss the camaraderie we enjoy at the Club house. The "Philadelphia Sketch Club Critique" is a chance to get together online until we can gather once more around the punch bowl and raise a toast, "to the Sketch Club, past, present and future."

Here's how it works:

- Active members go to the new "Philadelphia Sketch Club Critique" page and request access, which is available to all Club members in good standing.
- Once in post your work and watch as other members' post their artwork for critique.
- More details will be posted within the group including the option to be considered for a monthly "Highlights", a curated online gallery to be published on our external site/Instagram/Twitter channels.

This FaceBook Group is private; this means that as Members submit their work others are invited to critique each other in a professional and respectful way.

Critique Group Links:

- You can find a link on the Sketch Club website: <https://sketchclub.org/>
- The Critique Group's Facebook Page: <https://www.facebook.com/groups/PSCCritique>
- The PSC's main FaceBook page: <https://www.facebook.com/thesketchclub>

Sketch Club Critique Group

Have you been an artist long?

I'm glad I didn't run into traffic as I'll make it in time for the gallery show's opening night. Looks like a good turnout, the parking lot is filling up. Yes, it looks like a nice gathering.

"Hello, and welcome." a young woman is saying from behind the lobby table. "You're one of the artists, right? Just grab your name tag and feel free to sign the guest book. I think this is a nice group show, and we are getting some sales already!"

She's right, and someone did a nice job hanging this show in the main gallery. There will be a lot to see later, but first, where are my paintings hanging? That looks like one of my pieces, my trompe-l'œil acrylic piece "Birch Creek" and a woman is looking at it closely; she's... ..she's digging at the edge of the leaf with her fingernail?! Why would anyone attack a canvas that way? I guess I should feel flattered she thinks I glued a leaf onto the canvas, but really! Good she's stopped and is walking off. Try that at the Museum of art and a guard would tackle you!

There are some ladies viewing my watercolor "Creamery Hill". "Help ladies, I'm the artist Don Gauger. You seem to like this painting; I painted this landscape plein air at Winterthur Delaware. Can I answer any questions for you?"

The older woman says, "Oh I do like this very much. I thought I recognized the barn from a garden tour I took a few years ago. Their gardens are so lovely."

Her friend joins in, "Yes Winterthur is lovely and so is your painting. Have you been an artist long?"

I can't believe I'm stuck here in this studio painting, alone! It's a gorgeous day out and every other high-school kid is outside having fun. I can hear them! If it wasn't for my art scholarship, I wouldn't be trapped in here at this museum school until my ride comes back. There aren't even any instructors today! What am I...?

"Oh, hello" a young girl says as she walks into the studio. Her hair is so incredibly straight and long and she's very tall too.

"Hi."

She walks in towards the windows and says, "My friend is working in the pottery room, I'm singing at a coffee house tonight and I need to practice. Would you mind if I play the piano?"

"Sure, that's fine."

Boy that upright piano needs a tuning badly! The girl's voice, it's wonderful! She's singing songs from Joni Mitchell's "Ladies of the Canyon". Those sunbeams are backlighting her black hair giving the edges an auburn hue. I love this song... ..what was I working on in this painting? Oh yes... ..this isn't so bad.

"Yes, I've been an artist for a long time."

Thanks to **Don Gauger**, Critique Group Curator

Gallery hours: By appointment: Wednesday, Friday, Saturday, Sunday: 1 PM to 5 PM

February 2021

Main Gallery Schedule

[See the Sketch Club Open Gallery](#)

[See the 2020 Exhibition Schedule](#)

[Important Dates for all PSC Activities](#)

Virtual Exhibition: The 37th Annual High School Art Show

February 5th – March 4th, 2021



This show is a collaboration of the Philadelphia Sketch Club and the School District of Philadelphia, Deborah Klose, Director of Art Education.

See work in a variety of media created by exceptionally talented Philadelphia School District high school artists. The work is submitted by art teachers in the school district. The Sketch Club is the only public venue outside the school district where student work is displayed.

The virtual show is available at [Visit the Virtual High School Art Show Gallery](#). The work from the virtual classrooms of the participating Art Teachers will be online with the students' names and schools on each file.

Awards: Exhibition viewers can make financial awards to work they consider worthy. Awards can be \$25 or \$25 multiples. Donors will be recognized in a published list of awards during the show and in the March Portfolio

Dorothy Roschen, Chair, 2021 HS Art Show at the Philadelphia Sketch Club

Image: 2020 HS Art Show, Jurors' Choice Award, Peace, acrylic, Valeria Ternavskaya, Academy at Benjamin Rush HS.

Support this Exhibition Now! Go to:

<https://sketchclub.org/the-37th-annual-high-school-art-show-awards/>

Stay up to date with Sketch Club activities. Go to: sketchclub.org

Gallery hours: By appointment: Wednesday, Friday, Saturday, Sunday: 1 PM to 5 PM

February 2021

Main Gallery Schedule

Call for Work: The 2021 Annual Domenic DiStefano Memorial Works on Paper Virtual Exhibition - February 23rd- March 23rd, 2021



2020 1st place, Meg Constable 6-20-19

The 2021 Philadelphia Sketch Club

Annual Domenic DiStefano Memorial

Works on Paper Juried Exhibition

Virtual Exhibition **February 23rd-March 23rd**

Artists, enter your work now!

Plan to join us for our next open Virtual juried show hosted by the Philadelphia Sketch Club

Enter online [HERE](#)

See the [Works on Paper Prospectus](#)

Entry Deadline:

Friday February 19th, 2021 at
Midnight

Stay up to date with Sketch Club activities. Go to: sketchclub.org

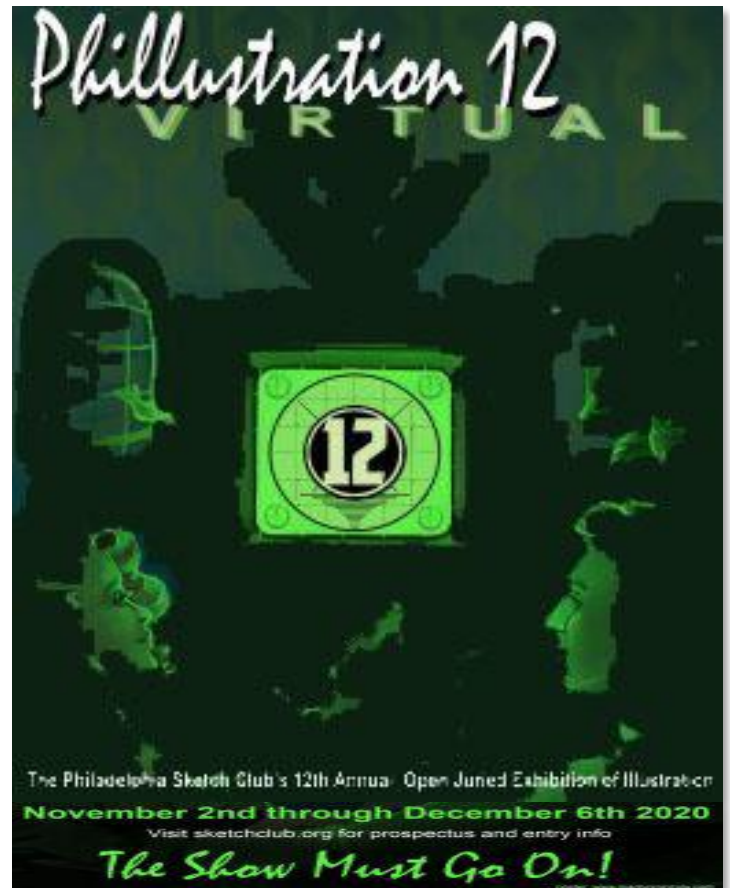
Main Gallery Schedule

Phillustration 12

[The Online Gallery is still Available Here](#)

[See the Phillustration 12 Virtual Video](#)

A video montage of this year's Phillustration 12
accepted artists crafted by:
PSC Gallery Manager, **Kaylie Minzola**



Awards

First Place:

Joe DeVito *Doc Savage Shattered*

Second Place:

Gil Cohen *Wounded Aboard*

Third Place:

Lisa Falkenstern *I'm Late*

First Place Self Promotion:

Dave Zeggart *Lennon*

First Place Book:

Glenn Zimmer *Bucket Fillers pg. 20_21*

Honorable Mention:

Wieslawa Lagenfeld *Kristina's Menagerie*

Honorable Mention:

Deb Hoefner *Night Owl*

Honorable Mention:

Isabelle Staub *Quarantea*

[See the On-line Gallery Here](#)

Gallery hours: By appointment: Wednesday, Friday, Saturday, Sunday: 1 PM to 5 PM

February 2021

Stewart Gallery Schedule



**Exhibition space in
the Stewart Gallery
is available for PSC
Members!**

Reserve the gallery by
contacting our
Exhibition Coordinator:
exhibitions@sketchclub.org

The space is \$150 for a
month. Members can
show once in the Stewart
Gallery per year.

[See the Sketch Club Open Gallery](#)
[See the 2020 Exhibition Schedule](#)
[Important Dates for all PSC Activities](#)

Sketch Club Activities

Critique Night: TBD

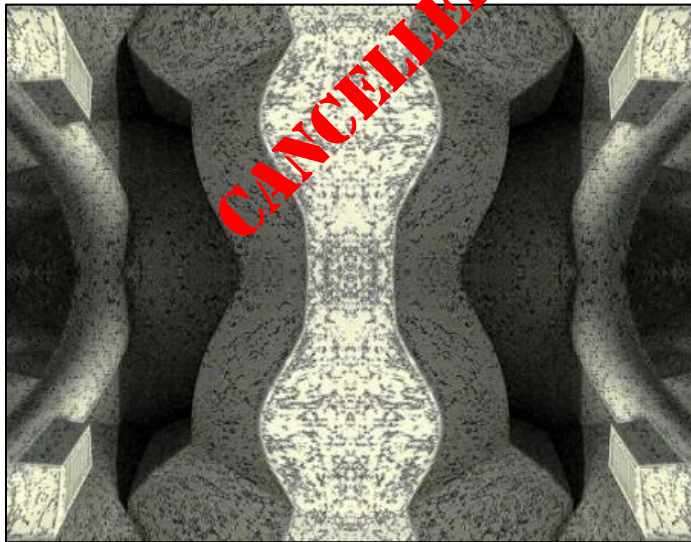
Open to PSC Members and Non-Members

Critique Night is held in the Library of the Sketch Club every third Wednesday beginning at 7 PM. Bring work you have finished, work in progress, or just sketches for work you're planning! Photos, digital work, drawings, all mediums are welcome; we can project digital images on a screen for review, so you have the option to show work that may be too big or too heavy to transport to the Club. There is no one individual directing the critique, just your fellow artists and peers. Facilitated/monitored by Rich Harrington, PSC President



Thanks to PSC member volunteer **Rich Harrington** for organizing and monitoring this event

Photo Circle: TBD



We will discuss new group activities and possibilities for expansion. The Photo Circle meets every 2nd Thursday at 6:30 PM. You can contact Steve anytime at stphniwan@gmail.com or 215-300-9192 (cell). **Steve Iwanczuk**, Photo Circle Monitor and Member of Philadelphia Sketch Club Board of Directors.

Thanks to PSC member volunteer **Steve Iwanczuk** for organizing and monitoring this event.

Gallery hours: By appointment: Wednesday, Friday, Saturday, Sunday: 1 PM to 5 PM

February 2021

Art Natters: Members News

Sketch Club member **Rich Harrington** is presenting work at the Artists' Gallery – February 4th through th 28th.



LOOKING *Forward* **ALLA PODOLSKY**
RICHARD HARRINGTON



February 4th thru the 28th
Artists' Gallery
18 Bridge St, Lambertville New Jersey
Open Thursday thru Sunday 11-6 PM
www.lambertvillearts.com



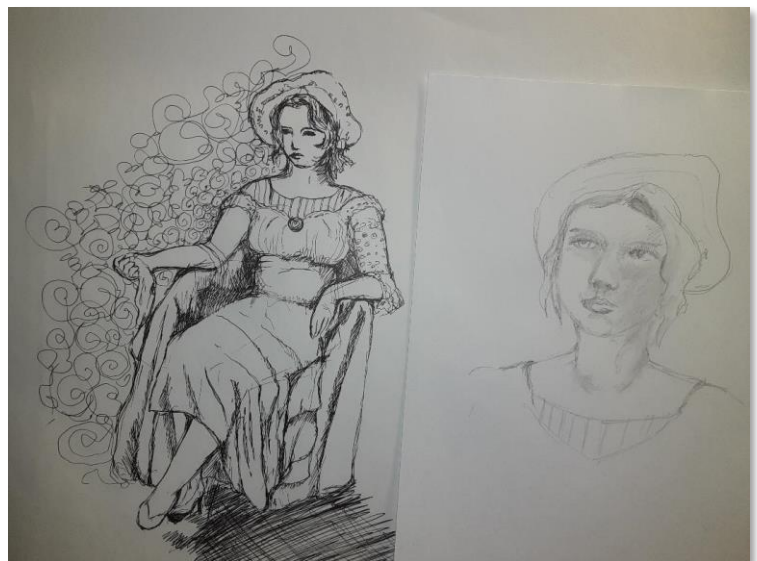
Art Natters: Members News

Sketch Club member and Zoom workshop participant **Joann Neufeld** says “thank you for organizing the live model zoom session to start off our new year. Here are some charcoal drawings I did that night”.



Art Natters: Members News

Sketch Club member and Critique Facebook group curator **Don Gouger** attended the Zoom workshop.



Art Natters: Members News

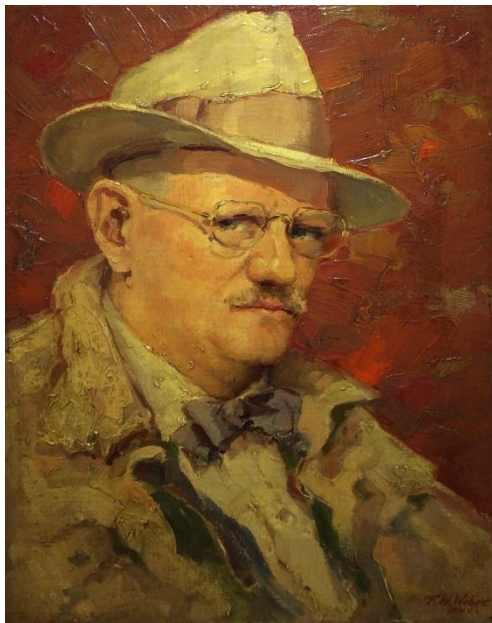
Work from new Sketch Club member **Laurel Grady**



"Bowl of Persimmons" Oils on canvas board; 6" X 6"

Art Natters: Members News

From Sketch Club member **Eric Weber**



Frederick W Weber Self Portrait

The Website for Past PSC Member (1935 to 1972) and President (1943) F. W. Weber Now Live

Find the website at: www.fwweber.org

Frederick William Weber (1890-1972): Fred served as PSC President in 1943 and remained an active member until his death in 1972 at age 82.

In this [Philadelphia Record article "Sketches from Life"](#), from 1943 when Weber was club president, PSC is featured along with a photograph of Weber with other notable past members Edward C. Smith, T. Norman Mansell, and John H. Geiszel.

The website was recently relaunched by the artist's grandson Eric who is eager to hear from individuals who own works by his grandfather or have related information to share.

The **fwweber.org** website includes:

- hundreds of images of Weber's paintings and etchings
- newspaper articles, personal documents, and other early 20th Century artifacts
- additional biographical and contact information

Contact:

Eric Weber

eric@fwweber.org



F W Weber - Photo

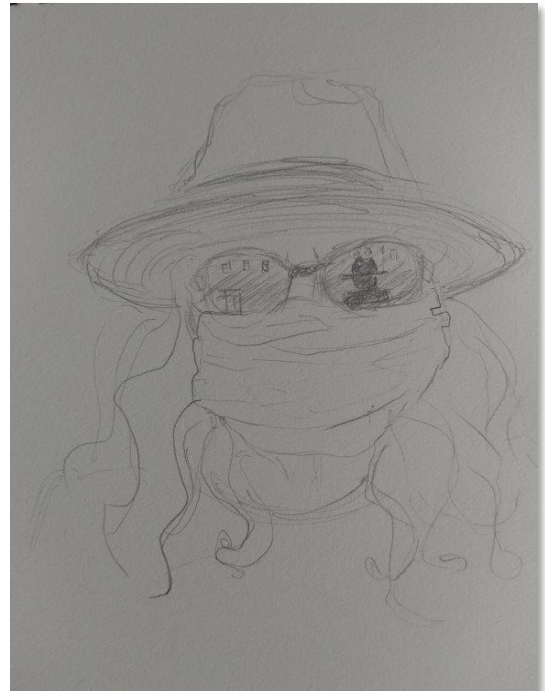
Gallery hours: By appointment: Wednesday, Friday, Saturday, Sunday: 1 PM to 5 PM

February 2021

From Sketch Club member **Aida Trabucchi**



Women in park 6.5x 5.25 (paper dimensions)
pencil, ink wash



Self-portrait 6 x 8 inches
(paper dimensions) pencil



Cat 4.5 x 6 inches (paper dimensions) pencil,
gouache, watercolor, watercolor pencil



Cristophe 4 x 6 inches (paper dimensions) pencil,
pastel pencil

Gallery hours: By appointment: Wednesday, Friday, Saturday, Sunday: 1 PM to 5 PM

February 2021

Art Natters: Members News

Submitted by Sketch Club member **Nancy Herman**



Larkspur Archival Digital Print



Poppies in the Sun Archival Digital Print



Florentine Silk Archival Digital Print



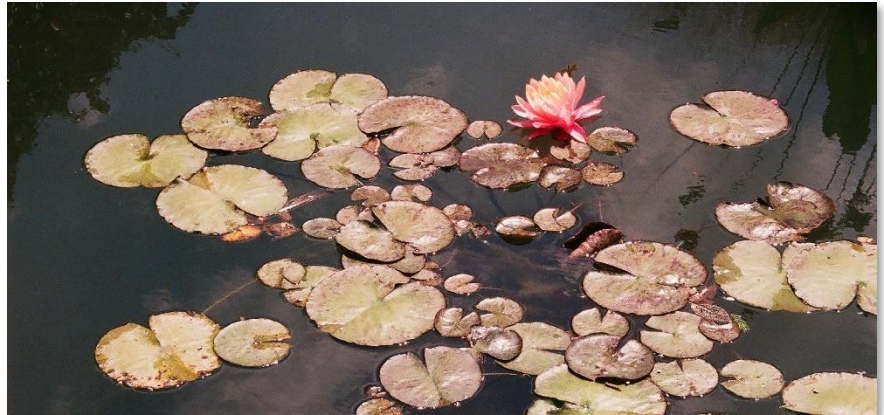
Purple Iris Archival Digital Print

Art Natters: Members News

Just before the end of the year, PSC Member **Chris Fowler's** photograph, "Hommage A Monet", was accepted into the Vancouver (WA) Art Space's show "Inspired by the Greats".

This was followed, early in the new year, by his piece "The Eye of...?" being accepted into the "Ecstasy" show of the Sebastopol (CA) Center for the Arts; and then "Catoctin Creek II" into the "Magnum Opus" show of the Sacramento (CA) Fine Arts Center.

Clearly this level of success is not going to last, but, for the moment, I'm certainly enjoying it.



Homage a Monet



The Eye of...



Catoctin Creek II

Gallery hours: By appointment: Wednesday, Friday, Saturday, Sunday: 1 PM to 5 PM

February 2021

Sketch Club Open Workshop Schedule

All workshops are open to the public. There is no need to register before attending. You do NOT have to be a member of the Philadelphia Sketch Club to participate in the workshops. Our workshops are open to anyone who is interested in drawing, painting or printmaking. All skill levels are welcome. Fees: Model workshops: \$8/session members, \$9/session for non-PSC members; Printmaking workshop: \$10/session; All workshops \$6 for full-time students. Monitored by PSC members.

Life Model	Costumed Model	Printmaking
<p>Mondays – 5, 20, and 40-minute poses 6:30 PM-9:30 PM Monitors: Jackie Barnett and Tom Kohlmann</p> <p>Tuesdays – Extended pose: 12:00 PM to 3:00 PM Monitor: Jacqueline Barnett</p> <p>Wednesdays – Extended pose: 6:30 to 9:30 PM Monitor: Vince Docktor</p> <p>Saturdays – Extended pose: 9:30 AM to 12:30 PM Monitor: Vince Docktor</p>	<p>Thursdays Extended pose 12:00 PM to 3:00 PM Monitor: Bob Bohne.</p>	<p>Tuesdays 10:00 AM to 2:00 PM Monitor: Elizabeth H. MacDonald</p>

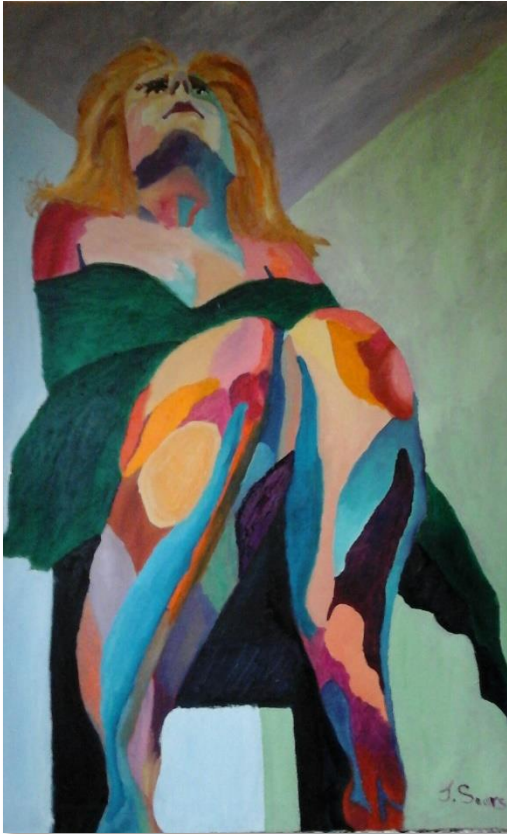
WATCH FOR UPDATES - CANCELLED DUE TO COVID-19

Please Note: Those who use oil paints should bring their own container(s) to remove used solvents. Odorless solvents only.

Thank you to all the PSC members who donate their time and expertise to make these workshops available to PSC members and the Philadelphia art community.

Opportunities/Notices

Joseph Sears



"The Governess" 36" X 24"; oil on canvas

See more of Joseph's work on the Sketch Club's open gallery:
<https://sketchclub.org/sketch-club-open-gallery/>

Gallery hours: By appointment: Wednesday, Friday, Saturday, Sunday: 1 PM to 5 PM

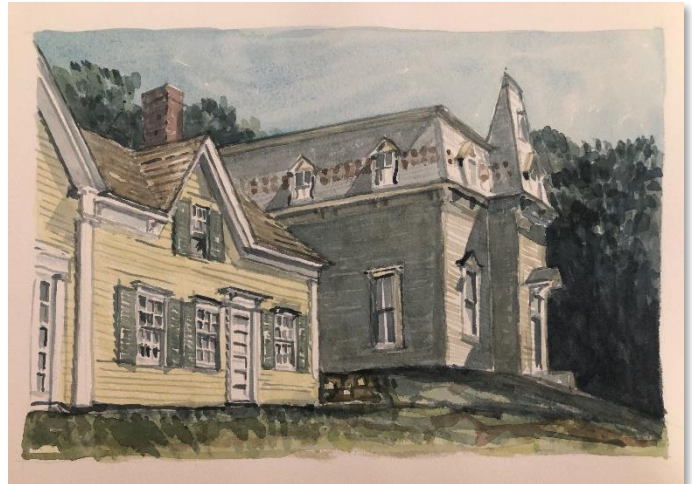
February 2021

Opportunities/Notices

Watercolors form **Sam Olshin**: done over this last year in Wellfleet, Cape Cod. All are Winsor & Newton on Arches cold press paper. If interested, price is \$500. <https://www.aosarchitects.com/>



Empty Barns, Wellfleet



Elk's Lodge, Wellfleet



House on Howland Lane



Late Afternoon, Provincetown

Gallery hours: By appointment: Wednesday, Friday, Saturday, Sunday: 1 PM to 5 PM

February 2021

Opportunities/Notices

Submitted by **Eric Fowler**



Baltimore Garage 16 x 20 Oils on canvas



Country Store 16 x 20 Oils on canvas



Parkesburg Garage 24 x 30 Oils on canvas.jpg



Crooked Knife 16 x 20 Oils on canvas

Opportunities/Notices

New Classes offered by **Joseph Sweeney**

PAFA Zoom Classes online from Home Nocturnes

Nocturnes, Painting night scenes.

Nocturne painting is a term coined by James Abbott McNeill Whistler to describe a painting style that depicts

scenes evocative of the night or subjects as they appear in a veil of light, in twilight, or in the absence of direct light. [Wikipedia](#)

Joseph Sweeney will lead the class in a series of six paintings with the theme of night time, Nocturnes

will reference the material of John Abbott McNeil Whistler, George Sotter, and other painters of night scenes.

Topics include color mixing to achieve a sense of night, capturing time of day, compositional fundamentals, and sound painting practices. Working from photographs of Nocturnes, supplied by instructor Joseph Sweeney, learn how to paint from photo references in preparation for working outdoors. Drawing, composition, and color will be emphasized. Instruction is geared towards oil, acrylic, and pastel, but experienced watercolorists are welcome.

Click here to sign-up:

<https://pafa-ce.coursestorm.com/course/nocturnes-painting-night-scenes-online-pt-605en-on>



Opportunities/Notices

New Classes offered by **Joseph Sweeney**

New Classes Key West



With a new year starting it's time to think about getting back to work. The next course that I will be teaching is a zoom class using source materials from Key West Florida. Here is the link to the Pennsylvania Academy of the Fine Arts registration page. Let me know if you have any questions.

joesweeney5@gmail.com

<https://pafa-ce.coursestorm.com/course/plein-air-painting-in-key-west-online-pt-605kw-on>

As a courtesy to our non-PSC-member friends, in support of the Philadelphia artist community, we publish your notices, etc., free of charge. However, contributions to the PSC are always welcome. And, we will gladly consider your application for membership

[Contribute to the Sketch Club Here](#)

[Apply for PSC Membership Here](#)

Membership

Stay in touch with current Sketch Club Members

Don't let sheltering in place prevent you from staying in touch with your Sketch Club friends and colleagues. Sketch Club members can access contact information for all current members. Go to the members only page at: <http://sketchclub.org/members-only-2/>. After you log-in with the password sent to you in your acceptance email you can click on the Membership Directory link to access members contact information. Non-Sketch Club friends can find a listing of current members along with their websites if they have one at: <http://sketchclub.org/sample-page/current-members-contact-list/>:

In Memorium

We are saddened to report that Sketch Club member, **Nancy Kress**, passed away. We will provide additional information when available.

Recent New Sketch club Members

Not a member? Your name should be here!

- Laurel Grady

For a complete listing of Sketch Club members, go to: <http://sketchclub.org/sample-page/current-members-contact-list/>

Not a PSC Member?: Join Now!

If you're reading this edition of the Portfolio and you're not a member of the PSC, you should consider joining the more than 200 other Philadelphia area artists who have. The PSC is one of the most active visual art venues serving center city Philadelphia. The PSC is a hands-on organization that offers its members the opportunity to participate in all aspects of creating and presenting work to the public. It presents over 20 scheduled group and solo exhibitions annually and offers a wide range of daily workshops. [Get info and an application here.](#)

If you are a member of the PSC, please feel free to share the Portfolio with your artist friends and encourage them to become members.

Membership Renewal

You can check the status of your membership by going to the Current Members page on the PSC web-site: <http://sketchclub.org/sample-page/memberspace/>. All current members are listed. An asterisk (*) means that the membership has expired but is within the 60-day grace period for renewal. Names in red are active links to the individual's web site.

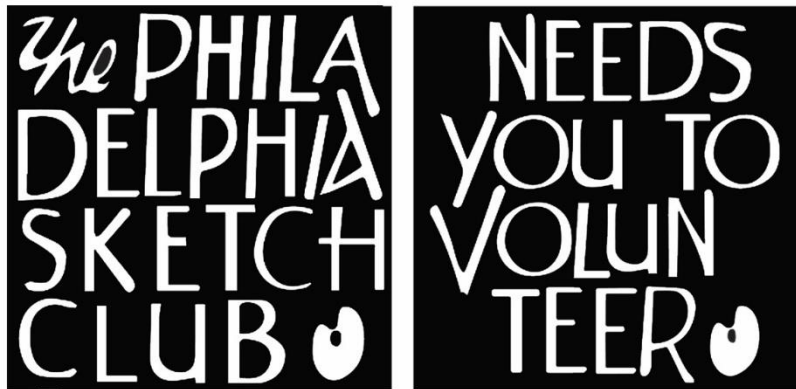
Renew Now! <http://sketchclub.org/annual-dues-payment/>

If you have any questions about your membership, please don't hesitate to contact us at membership@sketchclub.org or call the office: 215-545-9298.

Volunteer

Be an Active Sketch Club Member; Volunteer!!

The Philadelphia Sketch Club is managed entirely by volunteers except for the gallery manager, housekeeping, and bookkeeper.



The PSC always needs volunteer members. Volunteering is one of the most important aspects of being a Sketch Club member and it is the one of the best ways to take advantage of the PSC. You'll be working with colleagues who share the same interests and helping the PSC provide unique services to the visual arts community. Sign up for an activity today.

Here are some of the activities that volunteers perform:

- Chair exhibitions
- Assist in hanging exhibitions
- Covering exhibition drop-offs and pick-ups
- Monitor workshops
- Assist with presentations
- Serve on the Board of Directors
- Serve as Key Circle volunteers
- Publish the Portfolio
- Manage the PSC web site
- Gallery coverage
- Graphics for Portfolio, PSC web site, social media
- Assist in every aspect of managing the club and providing member services

To get involved, contact us at: info@sketchclub.org

Support the Sketch Club

Contribute

Please consider making your tax-deductible contribution now. These funds will be put to good use providing enhanced services to our members and friends.

Membership dues cover only a small portion of the PSC's operating expenses. Competition for funding for arts organizations like the Sketch Club is increasingly competitive and total funding for the arts is shrinking. Your additional support will keep the PSC an active support for visual artists in the Metropolitan Philadelphia area. The Philadelphia Sketch Club is an IRS designated 501(c) (3) non-profit organization.

You can call the office at 215-545-9298, mail checks to the Sketch Club or visit the Contribute page of our Website.

Visit our **Contribute** page of our website to give online at:

<http://sketchclub.org/support-us/>

You can also support the PSC on an ongoing basis when you shop on Amazon. Go to: <http://smile.amazon.com/> and enter the Philadelphia Sketch Club in the Pick your own charitable organization box.

Your support makes it possible for the PSC to continue providing ongoing daily workshops and numerous annual gallery exhibitions.

Like, Link & Share

If you're not following the Philadelphia Sketch Club on Facebook re-tweeting Sketch Club tweets yet, it's time that you did. We have well over 2000 Facebook followers. Get the word out about the Sketch Club. Please click the like button and share your comments and invite your friends to like our page.

Follow @PhilaSketchClub on Twitter, we have almost 400 followers. Please click the heart button and re-tweet our announcements.

Include links on your website, blogs and social media to The Philadelphia Sketch Club to increase traction across social media platforms.

Follow us on Facebook, Twitter and Instagram now!



Member Classifieds



Sketch Club member **Kathy Firpo** has moved to Florida and wants to donate her mat cutter to anyone in the Sketch Club. Contact Diane Hark at dianeharkart@aol.com for details.



Gallery hours: By appointment: Wednesday, Friday, Saturday, Sunday: 1 PM to 5 PM

February 2021

The Portfolio: The newsletter of the Philadelphia Sketch Club is published monthly. Editor, technical support and webmaster: Ken Weiner. Send your member news, announcements and corrections to portfolio@sketchclub.org. The due date for all materials is one week before the end of the month.

Back issues of the Portfolio are available at: <http://sketchclub.org/portfolio-archive/>

Thanks to PSC member volunteer **Ken Weiner** for his ongoing support of Sketch Club technology and communications functions.

The Philadelphia Sketch Club

235 S Camac Street
Philadelphia, PA 19107
(215) 545-9298
<http://sketchclub.org/>
gallerymanager@sketchclub.org
info@sketchclub.org

Gallery Manager: Kaylie Minzola

Officers:

- President: Richard Harrington
- Vice President: Kenneth Weiner
- Secretary: Elise Anzini
- Treasurer: William Patterson

Board of Directors

- Jacqueline Barnett
- Renard Edwards
- Stephen Iwanczuk
- Edward Pluciennik
- Charles F. Tarr
- Gail Williams