

Gallery hours: By appointment: Wednesday, Friday, Saturday, Sunday: 1 PM to 5 PM

April 2021



Nancy Herman: Designed for the Amplifier campaign to get people vaccinated.

This Month's Portfolio

Sketch Club Special Events	2
Sketch Club Critique Group	6
Main Gallery Schedule	8
Stewart Gallery Schedule	10
Sketch Club Activities	11
Sketch Club Open Workshop Schedule	21
Opportunities/Notices	22
Membership	30
Volunteer	31
Support the Sketch Club	32
Member Classifieds	32

Send your member news, announcements and corrections to: portfolio@sketchclub.org. The deadline for ALL submissions is 1-week before the end of the month.

Reminder: It's never too late. You can always renew your membership

You may pay online at <http://sketchclub.org/annual-dues-payment/> or mail your check to:

The Philadelphia Sketch Club

235 S. Camac St.

Philadelphia, PA 19107

For questions please contact the Gallery Manager at 215-545-9298 or email:

gallerymanager@sketchclub.org

Late Breaking News – See items that were submitted after the publication date. Go to:

<http://sketchclub.org/late-breaking-news/>

The PSC general email is: info@sketchclub.org

Sketch Club Special Events

More Zoom Workshops: **Get Involved**

We are planning additional Zoom workshops. Watch for email updates for details here and at: sketchclub.org

If you have a creative inspiration for an on-line workshop, please contact us at the PSC office and we will work with you to make it available to our community.



Workshop setup featuring Sketch Club's gallery manager, Kaylie Minzola.

Sketch Club Special Events

Sheltering in Place, Social Distancing

You are all aware of the myriad closings, cancellations, and postponements by all organizations in response to the COVID-19 pandemic. The Sketch Club intends to comply with all required social conventions. For the foreseeable future, we will not be holding any events at the PSC facility.

Our gallery manager, Kaylie, will be working from home during our scheduled hours office hours: Wednesday and Friday 1 PM to 5 PM. She can be reached by email at gallerymanager@sketchclub.org. You

can also leave messages on the PSC phone: 215-545-9298 and your call will be returned as quickly as possible.



Stay in Touch with On-Line Resources

- The Sketch Club Critique Group: <https://www.facebook.com/groups/PSCCritique>
- The Sketch Club Open Gallery: <https://sketchclub.org/sketch-club-open-gallery/>
- The Sketch Club's web site: sketchclub.org
- Our Facebook page: <https://www.facebook.com/thesketchclub/>
- Instagram: <https://www.instagram.com/philadelphiasketch/>
- Twitter: <https://twitter.com/PhilaSketchClub>
- Members: Stay in touch with other PSC colleagues. For contact information, go to the members only page at: <http://sketchclub.org/members-only-2/>. See Stay in touch with current Sketch Club Members in the members section below for instructions.
- Non-Sketch Club friends can find a listing of current members names and business websites if they have one at: <http://sketchclub.org/sample-page/current-members-contact-list/>.

Sketch Club Special Events

Sketch Club On-Line Gallery: **Always Room for More Work!**

There's always room for more work: Submit Now!

The Sketch Club is hosting an on-going open gallery at: <http://sketchclub.org/sketch-club-open-gallery/>. This gallery is open to PSC members and non-members.

Submit up to 4 images of your work or of yourself working along with a very brief description to: portfolio@sketchclub.org.

Include for your work: Your name; Title; size; and medium.

For photos of yourself include: Who you are and a brief description of the the image.

Support the Sketch Club through Amazon Smile

Make free donations to the Sketch Club anytime you shop at Amazon Smile. Remember that anyone who purchases through Amazon can have Amazon make a contribution to the Club for most every purchase you make. Just log in and go to: smile.amazon.com -From there you can select the Philadelphia Sketch Club as your non-profit charity . Done. Then the Club receives a percentage of most every purchase you make. It is a painless way to contribute to the Club's welfare. Most purchases made on your mobile app and from Whole Foods qualify too! Go to smile.amazon.com/about/ to learn more.

Sketch Club Special Events

Ongoing Facilities Renovation

Now that Refinishing the Upstairs Gallery floor is complete our crew has turned its attention to refinishing the Main Gallery stairwell as well as other necessary repairs and maintenance.

Our thanks to **Chuck Tarr**, **Tom Kohlmann**, and PAFA graduate **Roger Chavez**. This back-breaking work is a major effort; sanding/scraping the surface and applying multiple coats of finish.

Additional work recently completed include:



Before

After

Main Gallery stairway refinishing and new railings

- Replace men's room sink faucet
- Refinishing gallery steps
- Reorganizing the ratskeller (basement)
- Repair of roof leak and repair Gallery cracks in ceiling and upper walls and area was painted
- Replace AC circuit board
- Paint upstairs gallery lockers
- Paint upstairs gallery storage closet interiors
- Repair ceiling tiles in the upstairs storage area
- Annual service of heating and AC units
- Major servicing of water/sewer services
- Lighting upgrade in Rathskeller
- Lighting upgrade in back stairway
- Lighting upgrade in water heater utility closet
- Numerous other refurbishing, repairs, and required services

We need your help: This required maintenance of our Sketch Club home is costly. We ask our members and friends to help keep the PSC financially healthy. Friends, please consider contributing to our maintenance fund. Members, please consider financial support beyond membership.

Contribute Now! [Make an On-line Contribution](#)

Sketch Club Critique Group

The Sketch Club Critique FaceBook Group

Curator's Pick – Don Gauger

The concept of "Virtual Reality" (VR) artist tools is covered nicely in a BBC online article "*Google's Tilt Brush VR painting app goes open source*".

Be sure to watch the video "3D painting makes audiences part of the art" further down the page to witness 3-dimensional painting demonstrations.

Link: <https://www.bbc.com/news/technology-55826249>



Join the Critique Facebook Group

Join your Club colleagues online at the "Philadelphia Sketch Club Critique"-- a Private group for Active PSC members only on Facebook.

Colleagues, please join in and contribute to your online art community. We all miss the camaraderie we enjoy at the Club house. The "Philadelphia Sketch Club Critique" is a chance to get together online until we can gather once more around the punch bowl and raise a toast, "to the Sketch Club, past, present and future."

Here's how it works:

- Active members go to the new "Philadelphia Sketch Club Critique" page and request access, which is available to all Club members in good standing.
- Once in post your work and watch as other members' post their artwork for critique.
- More details will be posted within the group including the option to be considered for a monthly "Highlights", a curated online gallery to be published on our external site/Instagram/Twitter channels.

This FaceBook Group is private; this means that as Members submit their work others are invited to critique each other in a professional and respectful way.

Critique Group Links:

- You can find a link on the Sketch Club website: <https://sketchclub.org/>
- The Critique Group's Facebook Page: <https://www.facebook.com/groups/PSCCritique>
- The PSC's main FaceBook page: <https://www.facebook.com/thesketchclub>

Sketch Club Critique Group

Sketch Club Critique Group Monitor Notes: Don Gauger

The mixed media artwork "Evening Love Song" by Don Gauger recently showed in a juried on-line exhibition held by the Art League of Ocean City (Maryland)

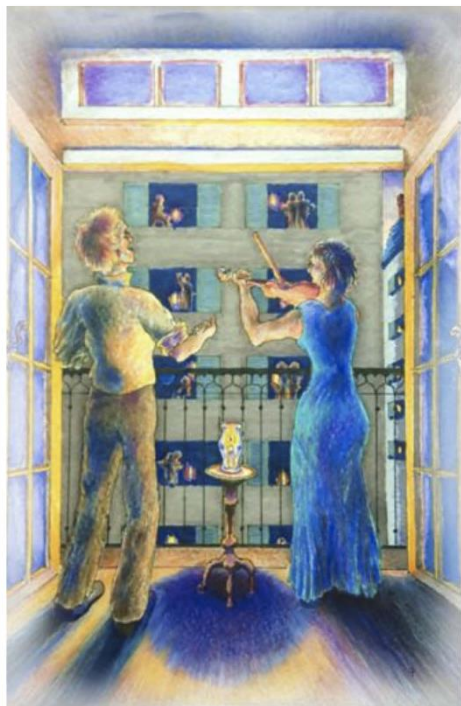
<https://artleagueofoceancity.org/>

A new market for artists: selling patrons the rights to display a digital copy of their work.

This story was covered in the Wall Street Journal under the heading "Art World Gets Crash Course in NFTs; a Frenzy Ensues" by Kelly Crow dated March 17, 2021.

In brief: Nonfungible tokens, or NFTs, have exploded onto the digital art scene this past year. Proponents say they are a way to make digital assets scarce, and therefore more valuable. WSJ explains how they work, and why skeptics question whether they're built to last.

See the article: https://www.wsj.com/articles/art-world-gets-crash-course-in-nfts-a-frenzy-ensues-11616039940?mod=hp_listc_pos1



Evening Love Song

The 1918 Pandemic and the 1919 Philadelphia Sketch Club "Camac Street Carnival". There have been a number of good articles written about the PSC efforts to support the War Bond drives including the PSC past members page which includes this piece of club history:

"Being a great patriot, Howard Chandler Christy was one of several artists to come down from New York in April of 1919 to take part in the Camac Street Carnival, an extravaganza planned by the Club's own H. Devitt Welsh to raise money for the Fifth (Victory) Liberty Bond Campaign."

In 1919 the PSC and the Plastic Club joined in supporting the Fifth War Bond drive by creating the Camac Street Carnival. Of the numerous illustrations generated by Sketch Club artists in support of the war effort, at least one illustration of the bannered street exists in the PSC archives. The carnival was a huge draw for regional citizens. What makes this all startling is that just eight months earlier in September 1918 was the beginning of the wave of Spanish Flu infections which swept Philadelphia. a troop parade drew hundreds of thousands of visitors. Concurrently the Surgeon General of Philadelphia strongly advised against holding the event but Mayor went ahead. That story is covered in depth by a Smithsonian magazine article and elsewhere.

Gallery hours: By appointment: Wednesday, Friday, Saturday, Sunday: 1 PM to 5 PM

April 2021

Main Gallery Schedule

[See the Sketch Club Open Gallery](#)

[See the 2021 Exhibition Schedule](#)

[Important Dates for all PSC Activities](#)

Call for Work: The Art of the Flower 2021:

Deadline for Entries: Midnight Apr 16 2021

The Art of the Flower 2021
presented in memory of Donald C. Meyer
April 25th through May 25th





Call For Entries
Entry Deadline April 16th
Visit www.sketchclub.org for prospectus

Gary Grissom *Stargazer Lily*
First Place and 2020 Donald C. Meyer Medal Winner

[Download the Prospectus](#)

[Enter Online](#)

Don Meyer was a devoted Distinguished Member of the Philadelphia Sketch Club. An accomplished painter, he enthusiastically and tirelessly served the PSC in a myriad of different ways, including serving as Vice President for over 10 years, and acting as Chairman of a host of different exhibitions. A well-known artist in Philadelphia, in 2002 Don was the subject of a one-person exhibition at the Berman Museum on the campus of Ursinus College. In addition, he was the Curator for the exhibition *Surviving Ourselves*, an exhibition of the contemporary masters of the Philadelphia Sketch Club in the permanent collection of the Woodmere Art Museum. Don passed away suddenly on September 11th, 2012. Fortunately, he left us with a large body of videos and podcasts that can be seen and heard at donaldmeyerhome.com. Through the generosity of his wife, Dianne Meyer, we are able to remember him and honor his legacy with the Donald C. Meyer Medal.

-Richard Harrington, PSC President

Main Gallery Schedule

The 2021 Annual Domenic DiStefano Memorial Works on Paper Exhibition: February 23rd-March 23rd, 2021

You can still see the exhibition: [2021 Works on Paper Juried Exhibition](#)

SHOW CHAIR: Diane Batson-Smith

JUROR: Aida Birritteri

Awards 2021

Best in Show:

Gary Grissom: *Ava and Yasin, Cousins*

Graphite, INK, Pastel, Watercolor
and Flash on Paper

Second Place:

Anjali Karustis: *Waiting*

Gouache, pastel, colored pencil

Third Place:

Robin Gibson: *Encroachment*

Woodcut



2021 Best In Show - "Ava & Yasin, Cousins" Garry Grissom

Best Use of Water Transparent Watercolor: Jane DeGruchy: *Coral Glow*

Excellence in Watercolors: Amelia Galgon: *Touch of Green*

Honorable Mention: Mary Kane: *Justice Denied*

Charcoal Gail Salzman: *Between Heaven and Earth* – Etching

Katy Lin: *Between Seasons* – Oil

Abel Dolby: *Cliveden Move Out Day* - Graphite on Paper

Stay up to date with Sketch Club activities. Go to: sketchclub.org

Gallery hours: By appointment: Wednesday, Friday, Saturday, Sunday: 1 PM to 5 PM

April 2021

Stewart Gallery Schedule



**Exhibition space in
the Stewart Gallery
is available for PSC
Members!**

Reserve the gallery by
contacting our
Exhibition Coordinator:
exhibitions@sketchclub.org

The space is \$150 for a
month. Members can
show once in the Stewart
Gallery per year.

[See the Sketch Club Open Gallery](#)
[See the 2021 Exhibition Schedule](#)
[Important Dates for all PSC Activites](#)

Sketch Club Activities

Critique Night: TBD

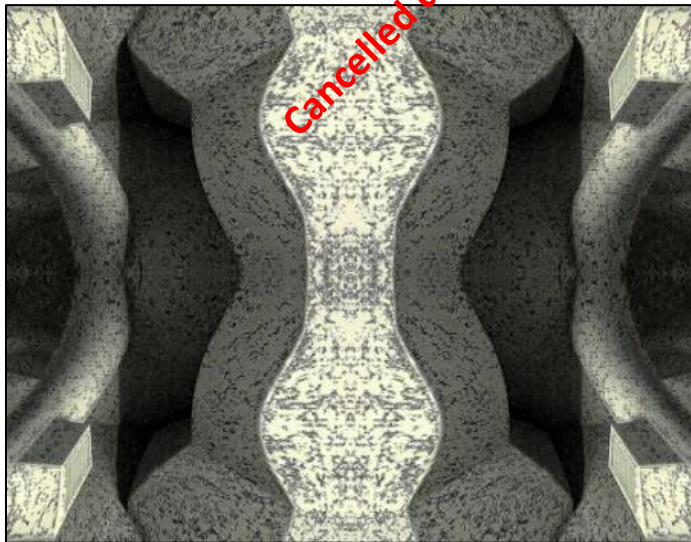
Open to PSC Members and Non-Members

Critique Night is held in the Library of the Sketch Club every third Wednesday beginning at 7 PM. Bring work you have finished, work in progress, or just sketches for work you're planning! Photos, digital work, drawings, all mediums are welcome; we can project digital images on a screen for review, so you have the option to show work that may be too big or too heavy to transport to the Club. There is no one individual directing the critique, just your fellow artists and peers. Facilitated/monitored by Rich Harrington, PSC President



Thanks to PSC member volunteer **Rich Harrington** for organizing and monitoring this event

Photo Circle: TBD



We will discuss new group activities and possibilities for expansion. The Photo Circle meets every 2nd Thursday at 6:30 PM. You can contact Steve anytime at stphniwan@gmail.com or 215-300-9192 (cell). **Steve Iwanczuk**, Photo Circle Monitor and Member of Philadelphia Sketch Club Board of Directors.

Thanks to PSC member volunteer **Steve Iwanczuk** for organizing and monitoring this event.

Art Natters: Members News

Visit Sketch Club Online Gallery

Go to the Sketch Club's on-going open gallery to see recent updates with work by PSC members and friends:

<http://sketchclub.org/sketch-club-open-gallery/>.

Members and friends can submit up to 4 images. Send your submissions to:

portfolio@sketchclub.org.

Include for your work: Your name; Title; size; and medium.

For photos of yourself include: Who you are and a brief description of the the image.

This Month's Banner Art

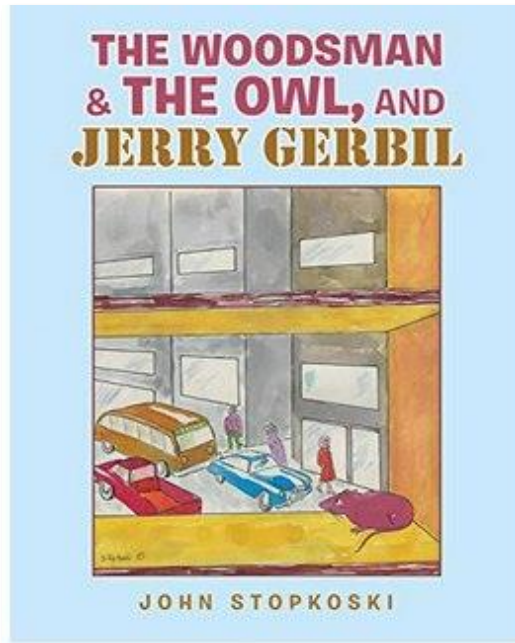
Thank you, Sketch Club member **Nancy Herman**, for this month's Portfolio banner.



The banner was designed by Nancy for the Amplifier campaign to get people vaccinated. For more information go to: <https://amplifier.org/campaigns/>

Art Natters: Members News

Sketch Club member **John Stopkoski** illustrated and published his new book.



Sketch Club member **J. Clayton Bright** at Ladew Topiary Gardens

Ladew Topiary Gardens is celebrating its 50th Anniversary and they invited J. Clayton Bright to be sculptor-in-residence during the 2021 garden season. There will be 20 some of his life-size bronze sculptures located throughout the garden. The garden is open 1 April – 31 October. Ladew Topiary Garden, 3535 Jarrettsville Pike, Monkton, MD 21111. Go to: <http://ladewgardens.com> for open days and times.



Art Natters: Members News

From Sketch Club member **Gayle Joseph**



Lemons. Watercolor; 5" x 7"



White asparagus; oil approx. 6" x 12"

Gallery hours: By appointment: Wednesday, Friday, Saturday, Sunday: 1 PM to 5 PM

April 2021

Art Natters: Members News

Sketch Club member, **Sally Eisenberg**



Springing Forward



Jumping Right In



Oh What a Year

Gallery hours: By appointment: Wednesday, Friday, Saturday, Sunday: 1 PM to 5 PM

April 2021

Art Natters: Members News

Sketch Club member **Susan Barnes** received the First Place Award in the 2021 Art of the Flower Juried Exhibition

Online at the Medford Arts Center, 8 N. Main St., Medford, NJ.

The juror was Christine Lafuente.

The exhibit can be viewed online at

<https://www.medfordarts.com/2021-art-of-the-flower-juried-exhibition-online.html#gallery>



"Flowers, Grapes & Sargent", Oil on Linen, 9 x 12 inches by Susan Barnes

The Sketch Club welcomes new member **Phillip Schad**



Untitled

Phillip studied fine arts at greenfield college in Massachusetts. Phillip has never entered an exhibition but would love to. "I really just want to expand my horizons in the local art community".

Art Natters: Members News

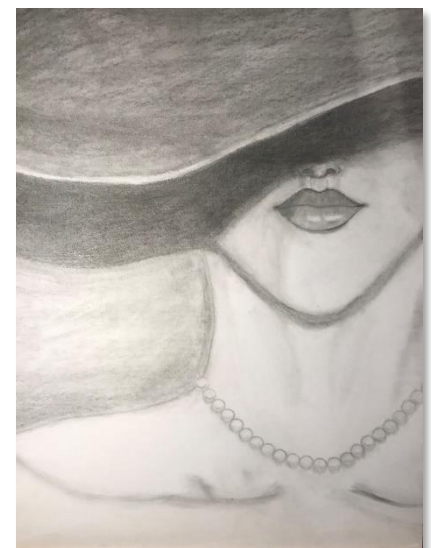
From Sketch Club member **Daniel Neufeld**

Here are three drawings that I did of Kaylie Minzola, the Sketch Club's gallery manager. When she modelled for a lot of us on New Year's Day during a zoom drawing session. I did each of these mixed media drawings in black charcoal, colored pencils, and pastels on 11 by 17 inch sheets of pastel paper. I plan to do a few more versions of Kaylie's poses in gouache paints as well, from a few photographs I took while the zoom session was going on.



The Sketch Club welcomes new member **Andy Horgan**

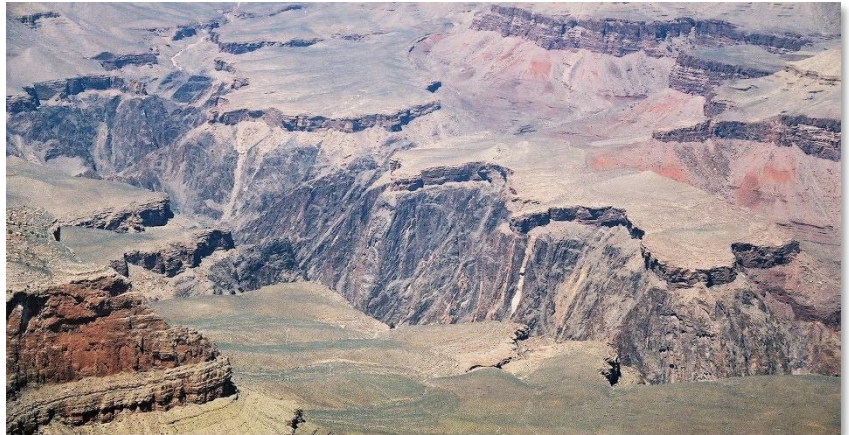
Andy is currently working on a series of paintings, starting with drawings. Here is the first drawing, "Lips and Pearls".



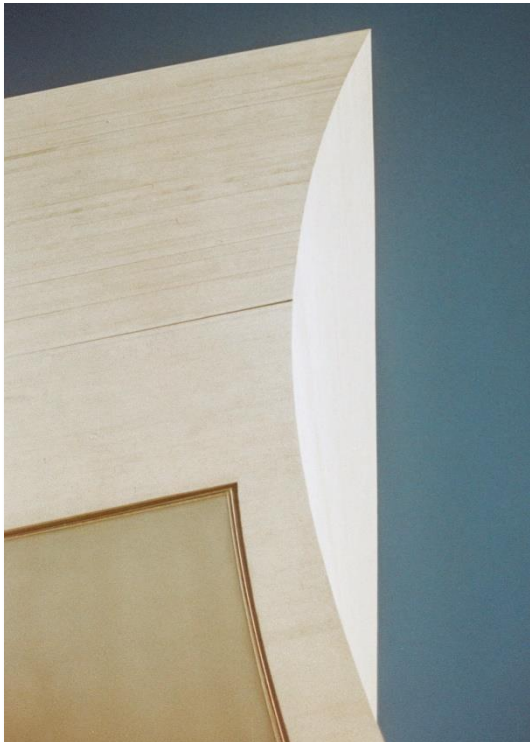
Lips and Pearls; 18" X 24"; Graphite

Art Natters: Members News

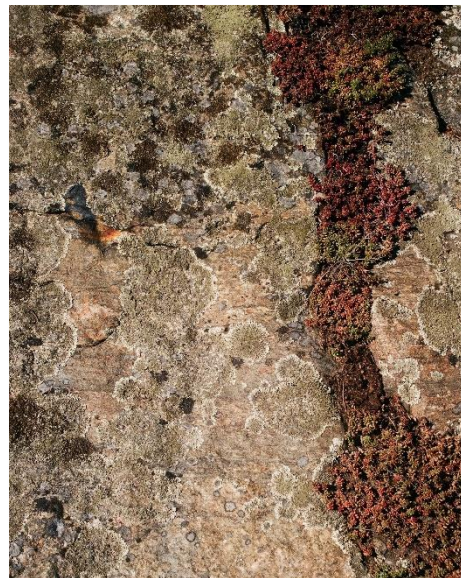
Sketch Club member **Chris Fowler's** photograph "REACH" was accepted into the "Denver Month of Photography: Architectural Photography" show of Art Gym Denver in Denver, CO. He had his photograph "Slash" accepted into the April Group Art Show of the David Jones Gallery in Kansas City, MO. His photograph "" was accepted into the show "The Sky's the Limit" at the Las Laguna Gallery in Laguna Beach, CA. just before presstime, he received confirmation all three of his entries, "Mesquite", "Oluwalu" and "La Perouse Beach", were accepted into the 2021 Virtual Photo Contest of the Grand Prairie Arts Association in Grand Prairie, TX. He has also been granted a solo show at the Blanche Ames Gallery of the Unitarian Universalist Fellowship in Frederick, MD, which will run from April 4-25 and feature 50 of his works.



Slash



REACH



Finland Rockface

Art Natters: Members News

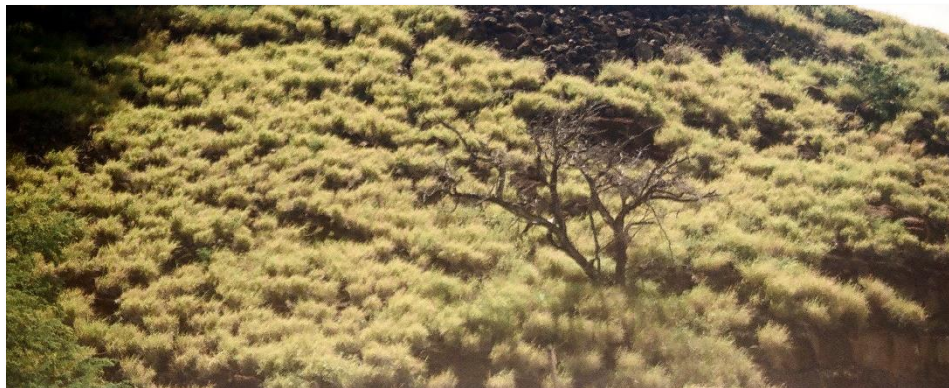
Just before press time, **Chris Fowler** received confirmation all three of his entries, "Mesquite", "Oluwalu" and "La Perouse Beach", were accepted into the 2021 Virtual Photo Contest of the Grand Prairie Arts Association in Grand Prairie, TX. He has also been granted a solo show at the Blanche Ames Gallery of the Unitarian Universalist Fellowship in Frederick, MD, which will run from April 4-25 and feature 50 of his works.



La Perouse Beach



Oluwalu



Mesquite

Art Natters: Members News

Sketch Club member **Robert Reinhardt** has an exhibition opening at DVAA on April 1st and going through the 18th.



Da Vinci Art Alliance
704 Catharine St. Philadelphia, PA 19147

Embracing Nature

Marie Bender, Mark Conti, and Robert Reinhardt

April 1 - April 18, 2021
Gallery 1 at Da Vinci Art Alliance

Virtual opening reception: April 1, 6pm on Zoom
Gallery visits by appointment (215) 550-1446

ABOUT THE EXHIBITION:

Mark S. Conti, Marie Bender, and Robert Reinhardt bring together their diverse perspectives to celebrate the natural world through photography, watercolor, and oil paintings. Through realistic renderings of everyday objects in unnatural spaces, distorted landscapes, and textured photography, *Embracing Nature* invites us to interpret the environment through a lens of admiration, memory, and place.

Mark S. Conti's photography exposes the relationships of form, texture and content that are hidden in plain sight in the observable world. By framing what is seen and unseen, he reveals the tension,

complexity and ultimate beauty of the natural world. Conti's images invite viewers to reexamine what is before them as if seeing it for the first time. Marie Bender's meticulous still life paintings query the familiar and seek out the magic in the mundane. Her "magic realism" paintings reignite a sense of awe and wonder and encourage viewers to see the extraordinary beauty of ordinary things. By focusing on commonplace things that are often overlooked, Marie Bender celebrates the everyday every day. Robert Reinhardt's watercolor paintings form new structural relationships between the land and the sky. Inspired by his travels to Scotland and Arizona, he manipulates the two different landscapes to create his own worlds. Reinhardt combines his on location visual experiences with site-specific color studies to create unreal environments that pretend to be real.

Whether through selection, imagination or distortion; Mark S. Conti, Marie Bender, and Robert Reinhardt's intimate displays of the natural world offer viewers a chance to recognize the beauty in things which are at risk of being overlooked.



Gallery hours: By appointment: Wednesday, Friday, Saturday, Sunday: 1 PM to 5 PM

April 2021

Sketch Club Open Workshop Schedule

All workshops are open to the public. There is no need to register before attending. You do NOT have to be a member of the Philadelphia Sketch Club to participate in the workshops. Our workshops are open to anyone who is interested in drawing, painting or printmaking. All skill levels are welcome. Fees: Model workshops: \$8/session members, \$9/session for non-PSC members; Printmaking workshop: \$10/session; All workshops \$6 for full-time students. Monitored by PSC members.

<p>Life Model</p> <p>Mondays – 5, 20, and 40-minute poses: 6:30 PM-9:30 PM Monitors: Jackie Barnett and Tom Kohlmann</p> <p>Tuesdays – Extended pose: 12:00 PM to 3:00 PM Monitor: Jacqueline Barnett</p> <p>Wednesdays – Extended pose: 6:30 to 9:30 PM Monitor: Vince Docktor</p> <p>Saturdays – Extended pose: 9:30 AM to 12:30 PM Monitor: Vince Docktor</p>	<p>Costumed Model</p> <p>Thursdays Extended pose 12:00 PM to 3:00 PM Monitor: Bob Bohne.</p>	<p>Printmaking</p> <p>Tuesdays 10:00 AM to 2:00 PM Monitor: Elizabeth H. MacDonald</p>
---	---	---

Please Note: Those who use oil paints should bring their own container(s) to remove used solvents. Odorless solvents only.

Thank you to all the PSC members who donate their time and expertise to make these workshops available to PSC members and the Philadelphia art community.

Opportunities/Notices

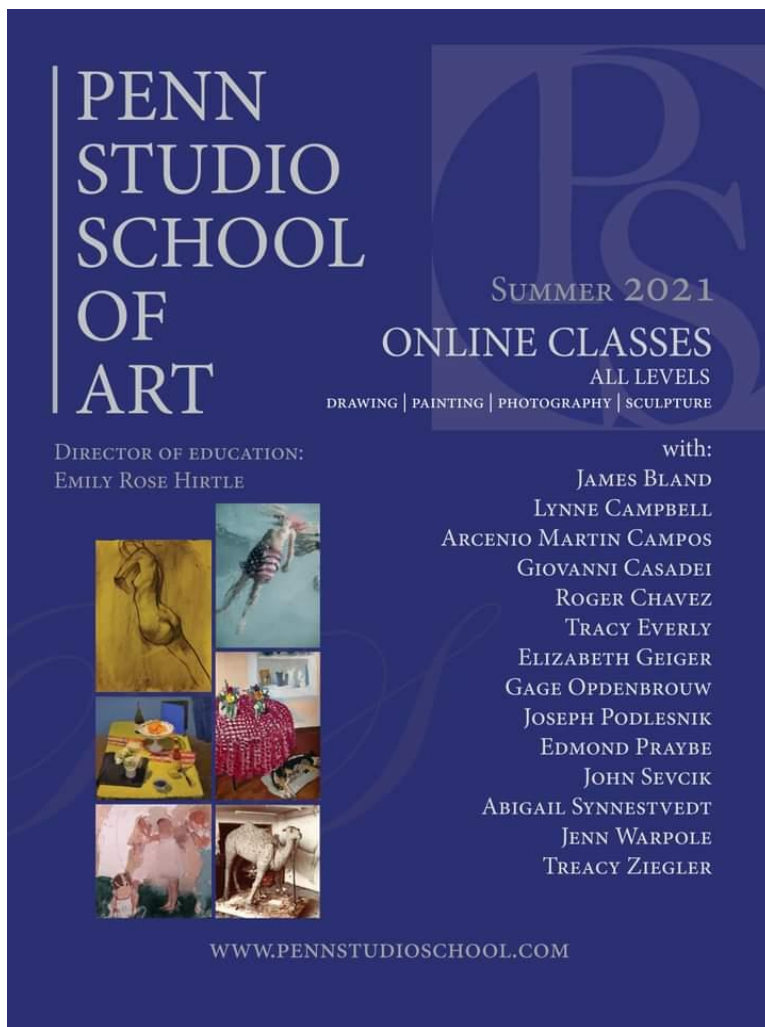
Call for Art

2021 Wild Things Juried Exhibition Online (Anything Wild - People, Places, Plants, Creatures)

- Show dates April 9 - May 13, 2021
- Exhibit is online only. Entries are submitted through EntryThingy. Deadline for submissions is April 5th at midnight. For more info & prospectus:

<https://www.medfordarts.com/2021-wild-things-juried-exhibition-online.html>

New Art School



**PENN
STUDIO
SCHOOL
OF
ART**

**SUMMER 2021
ONLINE CLASSES**
ALL LEVELS
DRAWING | PAINTING | PHOTOGRAPHY | SCULPTURE

DIRECTOR OF EDUCATION:
EMILY ROSE HIRTLE

with:
JAMES BLAND
LYNNE CAMPBELL
ARCENIO MARTIN CAMPOS
GIOVANNI CASADEI
ROGER CHAVEZ
TRACY EVERLY
ELIZABETH GEIGER
GAGE OPDENBROUW
JOSEPH PODLESNIK
EDMOND PRAYBE
JOHN SEVCIK
ABIGAIL SYNNESTVEDT
JENN WARPOLE
TREACY ZIEGLER

WWW.PENNSTUDIOSCHOOL.COM

Emily Rose Hirtle started the Penn Studio School of Art. Offerings include: Fine art classes for the summer. I have fantastic 14 teaching artists offering exceptional 4 week online and in person pleinair classes this Summer. Attached is the link to my school's website:

<https://pennstudioschool.com/>

Also here is the link to the online and in-person classes offered during the Summer:

<https://pennstudioschool.com/classes>

Emily Rose Hirtle
Director of Education
Penn Studio School of Art

Gallery hours: By appointment: Wednesday, Friday, Saturday, Sunday: 1 PM to 5 PM

April 2021

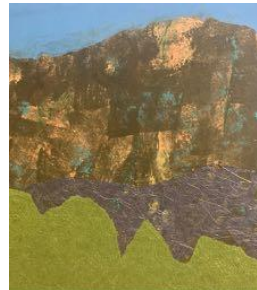
Opportunities/Notices

From **Linda Dubin Garfield**, Ed.D.; printmaker/mixed media artist/blogger

- lindadubingarfield.com
- Foutnder: <http://artsisters.org>
- Board Member: <http://.davinciartalliance.org>
- Founder: smARTbusinessconsulting.org

blogs:

- The ART of Travel - lindadubingarfield.blogspot.com
- toooldodieyoungblog.wordpress.com



Images from the Landscape Remeberd series

Gallery hours: By appointment: Wednesday, Friday, Saturday, Sunday: 1 PM to 5 PM

April 2021

Opportunities/Notices

Local artist **Terri Fridkin** will be exhibiting **Double_Space** at Muse Gallery, 52 North 2nd Street in Old City Philadelphia

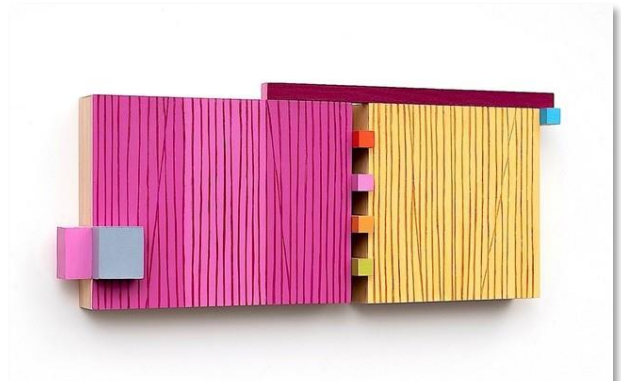
Dates: April 2nd - May 2nd

Hours: Thursday - Sunday, 12 - 5, and by appointment

Description: **Double_Space** brings two bodies of non-objective work together in one space using different mediums; mixed-media prints and carved, painted wall objects. Fridkin's non-objective art explores the fluidity of space by placing bold colors into the composition and having them coexist as one.



Here Together - (United) 6, monotype, colored pencil



The Way We Were: The Way We Were, carved wood, acrylic, hand cut recycled wood

They celebrate the uplifting nature that

color and shape can bring to our lives. Her minimal aesthetics embrace Fridkin's gravitation towards order and form which offers the observer a chance to pause and contemplate. This provides a sense of harmony to counteract the noise and uncertainty in our society today.

Opportunities/Notices

Torie Senseny

- victoriasenseny@yahoo.com
- toriesenseny.com
- Instagram: @toriesenseny
- Facebook: @toriesensensart

Torie graduated from Moore College of Art and Design in 2008 with a BFA in Three-Dimensional Fine Arts, Torie has always been interested in storytelling, clever wordplay, dream-like states, and nature. She uses pencils, markers, acrylic paint, and polymer clay to express these themes. Torie currently resides in Philadelphia with her two cats.



Untitled; 2021; Pencil and markers on paper; 9"x

From Serafina Harris

My website is

serafinaharrisart.wordpress.com

Instagram: @serifaeri

Facebook: SerafinaHarrisart



Gospel Singers; 35" X 24"; gouache

Opportunities/Notices

Susan Fraser was born in Pennsylvania. She received her Bachelor of Science at Florida Tech, was a research assistant in microbiology labs and the manager of a private botanical garden. Susan has had a keen interest in biology and art throughout her life.



Yoga Bear; 28" x 20"; Charcoal on Paper, \$500

She hitchhiked around Europe touring galleries, museums and churches. Her art career began while living in Germany. Later she immigrated to Canada and painted commission work based on the abundance of migratory waterfowl and resident owl populations on the Ontario Flyways. A year on Vancouver Island afforded opportunities to paint orcas and to experience the rich art culture of the west coast.

Susan now resides in the Ottawa Valley, Ontario, nestled between the Ottawa River and Algonquin Park where she is frequently visited by deer, owls, lynx, wolves, moose and Black bear on her acreage.



Hot and Cold Kiss; 40" x 30"; Acrylic Painting on Birch wood cradle board



Our World; 20" x 24 Pastel Painting on Uart Sanded Pastel Board - sold



Evening Sigh, 21" x 28"; Pastel painting on Velour Paper; \$800

Gallery hours: By appointment: Wednesday, Friday, Saturday, Sunday: 1 PM to 5 PM

April 2021

Cerulean Arts



TABLETOP MEDLEY

Alex Cohen, Caroline Vaughan Goodman,
Elizabeth Heller & Marie Davis Samohod

March 24 - April 18, 2021

Virtual Tour & Talk: Sunday, March 28 at 2pm
Registration required: ceruleanarts.com/pages/events

Front Images:

Top Left: Alex Cohen, *Apple Snack*, oil on plywood, 11" x 13"

Bottom Left: Caroline Vaughan Goodman, *Pot Plants and Cellophane*, oil on panel, 16" x 24"

Top Right: Elizabeth Heller, *Still Life with Paper Flower*, oil on canvas, 16" x 20"

Bottom Right: Marie Davis Samohod, *Bird and Bowl*, watercolor, 18" x 22"



Cerulean Arts

Cultivating an appreciation for art by presenting exhibitions, offering unique decorative and fine art for sale and providing art instruction for personal fulfillment.

Gallery Hours:

Wednesday - Friday: 10 am - 6 pm
Saturday and Sunday: 12 pm - 6 pm



Cerulean Arts

GALLERY · STUDIO

1355 Ridge Avenue
Philadelphia, PA 19123
267-514-8647
www.ceruleanarts.com

Cerulean Arts is pleased to present *Tabletop Medley* featuring still life paintings by Alex Cohen, Caroline Vaughan Goodman, Elizabeth Heller and Marie Davis Samohod. Cohen's seemingly casual arrangements of daily life objects belie careful composition. His painting is a slow, meditative process with a critical delay between thought and sight and its translation into paint, allowing for wonderful inaccuracies to occur. Using fluid brushwork and vibrant jewel tones, Goodman's illusionistic passages give way to a swirl of color and brushwork, then back again. These exciting tensions bring the viewer both deep into the painting and across its rich surface. Heller's still lifes feature personal items: glass vases, patterned fabrics, houseplants and, at times, her own sculptures. Carefully arranged, one is invited to move from one object to another, while savoring the forms, color and brushwork. Samohod's whimsical paintings feature expressive lines and vivid color. Although based on observation, her freedom with materials helps her create inner pictures instead of strictly realistic portrayals. She makes both cognitive and instinctual choices, revealing not only what is there but what is hidden.

Opportunities/Notices

Waterloo Arts invites all artists residing in the US or Canada to submit artwork for the 2021 Waterloo Arts Juried Exhibition. This is a unique opportunity for artists to exhibit work in the Waterloo Arts District in Cleveland, Ohio. This is the seventh year Waterloo Arts has held a nation wide juried exhibition. Over \$1,500 in cash prizes will be awarded. As in past years, Waterloo Arts will also offer a small stipend to all accepted artists to help defray costs associated with entry and shipping. Due to previous commitments and COVID 19, this year's exhibition will be held in the Waterloo Arts Gallery only and will not be expanded into Praxis Fiber Workshop and Brick Ceramic + Design.

2021 Waterloo Arts Juried Exhibition

WA
2021
WATERLOO ARTS
JURIED EXHIBITION
AUGUST 8 -
SEPTEMBER 18



DEADLINE TO ENTER:

May 16, 2021

Exhibition dates:

OPENING:

August 6, 2021

CLOSING:

September 18, 2021

Waterloo Arts is pleased to announce it is accepting applications for the 2021 Waterloo Arts Juried Exhibition.

JUROR: TBD

over \$1,500 in CASH AWARDS:

Best of Show: \$500

Second Best of Show: \$250

NEOH Artist CAN Journal prize: \$250

Honorable Mentions: \$100

ELIGIBILITY:

- Artists must be at least 18 years of age and reside in the US or Canada
- Artist may submit up to three (3) pieces of original art in any 2-D or 3-D media
- Work exceeding 36 inches in any dimension will be excluded due to space restrictions
- All work must have been executed within 5 years and not previously shown at Waterloo Arts
- Entries must remain in the gallery for the duration of the exhibition
- Artists grant permission for Waterloo Arts to use their images in promotional materials
- Artists agree to have their artist information included in show materials
- Time based, electronic media, performance art, and installations will NOT be accepted
- Work not conforming to entry guidelines may be excluded from exhibition at jurors' discretion

FEES: \$30 Non Refundable Entry Fee

TIMELINE:

March 15, 2021 – Call for entry opens
May 16, 2021 – Call for entry deadline
May 16 to June 30 – Juror review
July 1 – approximate date of notification sent to accepted artists
July 1 – 25 shipping and delivery of artwork
July 25 – last day to deliver/receive work
August 6, 2021 – first Friday opening
September 18, 2021 close



TO APPLY ONLINE AND FOR MORE INFORMATION:

<http://waterlooarts.org/2021-waterloo-arts-juried-exhibition>

For more information:

<http://waterlooarts.org/2021-waterloo-arts-juried-exhibition/>



Opportunities/Notices

As a courtesy to our non-PSC-member friends, in support of the Philadelphia artist community, we publish your notices, etc., free of charge. However, contributions to the PSC are always welcome. And, we will gladly consider your application for membership

[Contribute to the Sketch Club Here](#) [Apply for PSC Membership Here](#)

Membership

Stay in touch with current Sketch Club Members

Don't let sheltering in place prevent you from staying in touch with your Sketch Club friends and colleagues. Sketch Club members can access contact information for all current members. Go to the members only page at: <http://sketchclub.org/members-only-2/>. After you log-in with the password sent to you in your acceptance email you can click on the Membership Directory link to access members contact information. Non-Sketch Club friends can find a listing of current members along with their websites if they have one at: <http://sketchclub.org/sample-page/current-members-contact-list/>:

In Memorium

We are saddened to report that Sketch Club member, **Nancy Kress**, passed away. We will provide additional information when available.

Recent New Sketch club Members

Not a member? Your name should be here!

- Laurel Grady

For a complete listing of Sketch Club members, go to: <http://sketchclub.org/sample-page/current-members-contact-list/>

Not a PSC Member?: Join Now!

If you're reading this edition of the Portfolio and you're not a member of the PSC, you should consider joining the more than 200 other Philadelphia area artists who have. The PSC is one of the most active visual art venues serving center city Philadelphia. The PSC is a hands-on organization that offers its members the opportunity to participate in all aspects of creating and presenting work to the public. It presents over 20 scheduled group and solo exhibitions annually and offers a wide range of daily workshops. [Get info and an application here.](#)

If you are a member of the PSC, please feel free to share the Portfolio with your artist friends and encourage them to become members.

Membership Renewal

You can check the status of your membership by going to the Current Members page on the PSC web-site: <http://sketchclub.org/sample-page/memberspace/>. All current members are listed. An asterisk (*) means that the membership has expired but is within the 60-day grace period for renewal. Names in red are active links to the individual's web site.

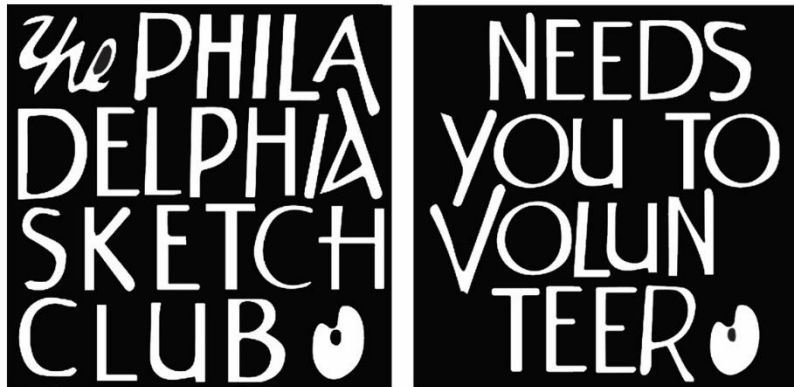
Renew Now! <http://sketchclub.org/annual-dues-payment/>

If you have any questions about your membership, please don't hesitate to contact us at membership@sketchclub.org or call the office: 215-545-9298.

Volunteer

Be an Active Sketch Club Member; Volunteer!!

The Philadelphia Sketch Club is managed entirely by volunteers except for the gallery manager, housekeeping, and bookkeeper.



The PSC always needs volunteer members. Volunteering is one of the most important aspects of being a Sketch Club member and it is the one of the best ways to take advantage of the PSC. You'll be working with colleagues who share the same interests and helping the PSC provide unique services to the visual arts community. Sign up for an activity today.

Here are some of the activities that volunteers perform:

- Chair exhibitions
- Assist in hanging exhibitions
- Covering exhibition drop-offs and pick-ups
- Monitor workshops
- Assist with presentations
- Serve on the Board of Directors
- Serve as Key Circle volunteers
- Publish the Portfolio
- Manage the PSC web site
- Gallery coverage
- Graphics for Portfolio, PSC web site, social media
- Assist in every aspect of managing the club and providing member services

To get involved, contact us at: info@sketchclub.org

Support the Sketch Club

Contribute

Please consider making your tax-deductible contribution now. These funds will be put to good use providing enhanced services to our members and friends.

Membership dues cover only a small portion of the PSC's operating expenses. Competition for funding for arts organizations like the Sketch Club is increasingly competitive and total funding for the arts is shrinking. Your additional support will keep the PSC an active support for visual artists in the Metropolitan Philadelphia area. The Philadelphia Sketch Club is an IRS designated 501(c) (3) non-profit organization.

You can call the office at 215-545-9298, mail checks to the Sketch Club or visit the Contribute page of our Website.

Visit our **Contribute** page of our website to give online at:

<http://sketchclub.org/support-us/>

You can also support the PSC on an ongoing basis when you shop on Amazon. Go to:

<http://smile.amazon.com/> and enter the Philadelphia Sketch Club in the Pick your own charitable organization box.

Your support makes it possible for the PSC to continue providing ongoing daily workshops and numerous annual gallery exhibitions.

Like, Link & Share

If you're not following the Philadelphia Sketch Club on Facebook re-tweeting Sketch Club tweets yet, it's time that you did. We have well over 2000 Facebook followers. Get the word out about the Sketch Club. Please click the like button and share your comments and invite your friends to like our page.

Follow @PhilaSketchClub on Twitter, we have almost 400 followers. Please click the heart button and re-tweet our announcements.

Include links on your website, blogs and social media to The Philadelphia Sketch Club to increase traction across social media platforms.

Follow us on Facebook, Twitter and Instagram now!



Member Classifieds



Sketch Club member **Kathy Firpo** has moved to Florida and wants to donate her mat cutter to anyone in the Sketch Club. Contact Diane Hark at dianeharkart@aol.com for details.



Gallery hours: By appointment: Wednesday, Friday, Saturday, Sunday: 1 PM to 5 PM

April 2021

The Portfolio: The newsletter of the Philadelphia Sketch Club is published monthly. Editor, technical support and webmaster: Ken Weiner. Send your member news, announcements and corrections to portfolio@sketchclub.org. The due date for all materials is one week before the end of the month.

Back issues of the Portfolio are available at: <http://sketchclub.org/portfolio-archive/>

Thanks to PSC member volunteer **Ken Weiner** for his ongoing support of Sketch Club technology and communications functions.

The Philadelphia Sketch Club

235 S Camac Street
Philadelphia, PA 19107
(215) 545-9298
<http://sketchclub.org/>
gallerymanager@sketchclub.org
info@sketchclub.org

Gallery Manager: Kaylie Minzola

Officers:

- President: Richard Harrington
- Vice President: Kenneth Weiner
- Secretary: Elise Anzini
- Treasurer: William Patterson

Board of Directors

- Jacqueline Barnett
- Renard Edwards
- Stephen Iwanczuk
- Edward Pluciennik
- Charles F. Tarr
- Gail Williams