

Gallery hours: By appointment: Wednesday, Friday, Saturday, Sunday: 1 PM to 5 PM

May 2021

May 2021



Rich Harrington

This Month's Portfolio

Sketch Club Special Events	2
Sketch Club Critique Group	5
Main Gallery Schedule	7
Stewart Gallery Schedule	8
In Memorium	9
Sketch Club Activities	10
Sketch Club Open Workshop Schedule	17
Opportunities/Notices	18
Membership	22
Volunteer	23
Support the Sketch Club	24
Member Classifieds	24

Send your member news, announcements and corrections to: portfolio@sketchclub.org. The deadline for ALL submissions is 1-week before the end of the month.

Reminder: It's never too late. You can always renew your membership

You may pay online at <http://sketchclub.org/annual-dues-payment/> or mail your check to:

The Philadelphia Sketch Club
235 S. Camac St.

Philadelphia, PA 19107

For questions please contact the Gallery Manager at 215-545-9298 or email:

gallerymanager@sketchclub.org

Late Breaking News – See items that were submitted after the publication date. Go to:

<http://sketchclub.org/late-breaking-news/>

The PSC general email is: info@sketchclub.org

Sketch Club Special Events

Sheltering in Place, Social Distancing

You are all aware of the myriad closings, cancellations, and postponements by all organizations in response to the COVID-19 pandemic. The Sketch Club intends to comply with all required social conventions. For the foreseeable future, we will not be holding any events at the PSC facility.

Our gallery manager, Kaylie, will be working from home during our scheduled hours office hours: Wednesday and Friday 1 PM to 5 PM. She can be reached by email at gallerymanager@sketchclub.org. You

can also leave messages on the PSC phone: 215-545-9298 and your call will be returned as quickly as possible.



Stay in Touch with On-Line Resources

- The Sketch Club Critique Group: <https://www.facebook.com/groups/PSCCritique>
- The Sketch Club Open Gallery: <https://sketchclub.org/sketch-club-open-gallery/>
- The Sketch Club's web site: sketchclub.org
- Our Facebook page: <https://www.facebook.com/thesketchclub/>
- Instagram: <https://www.instagram.com/philadelphiasketch/>
- Twitter: <https://twitter.com/PhilaSketchClub>
- Members: Stay in touch with other PSC colleagues. For contact information, go to the members only page at: <http://sketchclub.org/members-only-2/>. See Stay in touch with current Sketch Club Members in the members section below for instructions.
- Non-Sketch Club friends can find a listing of current members names and business websites if they have one at: <http://sketchclub.org/sample-page/current-members-contact-list/>.

Sketch Club Special Events

Sketch Club On-Line Gallery: **Always Room for More Work!**

There's always room for more work: Submit Now!

The Sketch Club is hosting an on-going open gallery at: <http://sketchclub.org/sketch-club-open-gallery/>. This gallery is open to PSC members and non-members.

Submit up to 4 images of your work or of yourself working along with a very brief description to: portfolio@sketchclub.org.

Include for your work: Your name; Title; size; and medium.

For photos of yourself include: Who you are and a brief description of the the image.

Support the Sketch Club through Amazon Smile

Make free donations to the Sketch Club anytime you shop at Amazon Smile. Remember that anyone who purchases through Amazon can have Amazon make a contribution to the Club for most every purchase you make. Just log in and go to: smile.amazon.com -From there you can select the Philadelphia Sketch Club as your non-profit charity . Done. Then the Club receives a percentage of most every purchase you make. It is a painless way to contribute to the Club's welfare. Most purchases made on your mobile app and from Whole Foods qualify too! Go to smile.amazon.com/about/ to learn more.

Sketch Club Special Events

Ongoing Facilities Renovation

Additional work recently completed includes:

- Exterior Painting
- Replace men's room sink faucet
- Refinishing gallery steps
- Reorganizing the ratskeller (basement)
- Repair of roof leak and repair Gallery cracks in ceiling and upper walls and area was painted
- Replace AC circuit board
- Paint upstairs gallery lockers
- Paint upstairs gallery storage closet interiors
- Repair ceiling tiles in the upstairs storage area
- Annual service of heating and AC units
- Major servicing of water/sewer services
- Lighting upgrade in Rathskeller
- Lighting upgrade in back stairway
- Lighting upgrade in water heater utility closet
- Numerous other refurbishing, repairs, and required services

We need your help: This required maintenance of our Sketch Club home is costly. We ask our members and friends to help keep the PSC financially healthy. Friends, please consider contributing to our maintenance fund. Members, please consider financial support beyond membership.

Contribute Now! [Make an On-line Contribution](#)

Sketch Club Critique Group

The Sketch Club Critique FaceBook Group

Curator's Pick – Don Gauger

The concept of "Virtual Reality" (VR) artist tools is covered nicely in a BBC online article "*Google's Tilt Brush VR painting app goes open source*".

Be sure to watch the video "3D painting makes audiences part of the art" further down the page to witness 3-dimensional painting demonstrations.

Link: <https://www.bbc.com/news/technology-55826249>



Join the Critique Facebook Group

Join your Club colleagues online at the "Philadelphia Sketch Club Critique"-- a Private group for Active PSC members only on Facebook.

Colleagues, please join in and contribute to your online art community. We all miss the camaraderie we enjoy at the Club house. The "Philadelphia Sketch Club Critique" is a chance to get together online until we can gather once more around the punch bowl and raise a toast, "to the Sketch Club, past, present and future."

Here's how it works:

- Active members go to the new "Philadelphia Sketch Club Critique" page and request access, which is available to all Club members in good standing.
- Once in post your work and watch as other members' post their artwork for critique.
- More details will be posted within the group including the option to be considered for a monthly "Highlights", a curated online gallery to be published on our external site/Instagram/Twitter channels.

This FaceBook Group is private; this means that as Members submit their work others are invited to critique each other in a professional and respectful way.

Critique Group Links:

- You can find a link on the Sketch Club website: <https://sketchclub.org/>
- The Critique Group's Facebook Page: <https://www.facebook.com/groups/PSCCritique>
- The PSC's main FaceBook page: <https://www.facebook.com/thesketchclub>

Sketch Club Critique Group

If you are hearing a buzz about "NFT"s and want to know a little more, here are two articles. - Don Gauger

Definitions: Cryptoart, or NFT art (NFTs are so-called nonfungible tokens)
NFTs and AI Are Unsettling the Very Concept of History -- Wired Magazine

<https://www.wired.com/story/nfts-and-ai-are-unsettling-the-very-concept-of-history/>

NFTs Are Hot. So Is Their Effect on the Earth's Climate -- Wired Magazine

<https://www.wired.com/story/nfts-hot-effect-earth-climate/>

Gallery hours: By appointment: Wednesday, Friday, Saturday, Sunday: 1 PM to 5 PM

May 2021

Main Gallery Schedule

[See the Sketch Club Open Gallery](#)

[See the 2021 Exhibition Schedule](#)

[Important Dates for all PSC Activities](#)

The 2021 Annual Art of the Flower Virtual Exhibition: Now open for viewing!
April 25th-May 25th, 2021



Best in show- Nancy Granda - Ligularia

Awards 2021

- BEST IN SHOW – **Nancy Granda**: Ligularia
Oil, on cradled birch panel
- SECOND PLACE – **Deborah Riccardi**; Paper Whites Blues
- digital photography
- THIRD PLACE – **Janis Pinkston**; Wild Flower
Post-consumer plastic mosaic
- BEST IN PHOTOGRAPHY – **Cheryl Bomba**; At Last
- BEST IN STILL LIFE – **Maura Matthews**; Second Chances
- BEST IN WATERCOLOR- **Michael Adams**; Summer
Bouquet

Honorable Mention

- **Joanne Donnelly**; *Poppy Pods* – Monotype with collage
elements
- **Doris Davis-Glackin**; *Ode to the Setting Sun* –
Watercolor
- **Robert Reinhardt**; *Full Bloom* – Monoprint Collage
- **Doris Peltzman**; *Slivers of Spring* – Oil

- Show Chari: **Richard Harrington**
- Juror: **Roger Chavez**

[Click here to view the gallery: 2021 Art of the Flower Virtual](#)

Gallery hours: By appointment: Wednesday, Friday, Saturday, Sunday: 1 PM to 5 PM

May 2021

Stewart Gallery Schedule



**Exhibition space in
the Stewart Gallery
is available for PSC
Members!**

Reserve the gallery by
contacting our
Exhibition Coordinator:
exhibitions@sketchclub.org

The space is \$150 for a
month. Members can
show once in the Stewart
Gallery per year.

[See the Sketch Club Open Gallery](#)
[See the 2021 Exhibition Schedule](#)
[Important Dates for all PSC Activites](#)

In Memorium

We are sad to report the recent passing of Sketch Club member Ben Cohen.

I met Ben shortly after I became a PSC member when he showed-up at the PSC to deliver some work for the 2010 Works on Paper exhibition.

They were pastels. They were so fresh and lively. I admired his openness, determination, craftsmanship, and talent. He would occasionally call me at home with a question about a website technicality. He never stopped learning. I last saw him at a Saturday workshop in 2019. He took the high-speed line from NJ... he was in his 90's!

Ken Weiner

If you have a Ben memory and/or a photo to share, send it to: portfolio@sketchclub.org will publish it in the June edition.

Here's a link to more about Ben:

<https://www.arborcompany.com/locations/new-jersey/mount-laurel/blog/ben-cohen-finds-peace-and-fulfillment-in-art>

Honoring Ben Cohen

WAA presented **Ben Cohen** with a plaque saying: *Artist, Teacher, Mentor, Presented in Appreciation for the Many Years of Dedication, Inspiration, and Joy of Creativity.*

In addition to the plaque, which will be put on the outside of the room giving the art room the name of our dedicated instructor who for so many years imparted his wealth of knowledge upon us.

His son David said how much Ben and his family appreciated this honor. Ben was thrilled, it really put a smile on his face.

Following are some of Ben's quotes from various interviews.

Painting has been "terrific therapy" for him, "Instead of taking pills, I sketch or go to a life class, he said.

Ben, whose sense of humor is evident in his work as well as in his conversation, said he aims to "de-intellectualize his art." "When I put a nose in a painting, it's really a nose, not a metaphor for something else.

"An artist can't forever be the same," he says, with a characteristic wide grin. "That would be boring."

"A piece of art is a piece of yourself," he says. "And that gives it instant value."

And one other thing from this dean of the local art world, a thing Ben reminds every artist: In the eye and hand of an artist, child or adult, "... the ordinary can become extraordinary."

"My philosophy is that art should be uplifting and thought-provoking and may allow for quite a smile. There is enough horror and aggravation going on nowadays. If I can make someone smile, I want to do that," the artist says.

"I can't even imagine a life without art," said Ben. "With my family — and with art — I'm a very lucky man. Life is good!"

Along the way, Ben taught at the Samuel S. Fleischer Art Memorial in Philadelphia, and the Perkins Center for the Arts in Moorestown, and for the Willingboro Art Alliance, where he is a revered elder statesman.

Ben's works are on display in private and corporate collections, including at Public Service Electric and Gas, Equity Bank, the Camden County Courthouse, Merck Medco and numerous other places.



above and right, Ben in his Cinnaminson studio



Cinnaminson resident Ben Cohen with the portrait presented to him after he was named "Chevalier" of the Legion of Honor by the president of France for his contributions during World War II.

Sketch Club Activities

Critique Night: TBD

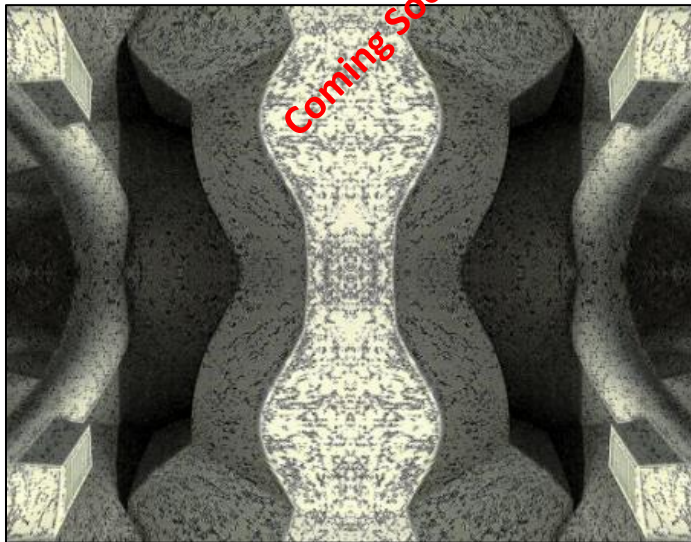
Open to PSC Members and Non-Members

Critique Night is held in the Library of the Sketch Club every third Wednesday beginning at 7 PM. Bring work you have finished, work in progress, or just sketches for work you're planning! Photos, digital work, drawings, all mediums are welcome; we can project digital images on a screen for review, so you have the option to show work that may be too big or too heavy to transport to the Club. There is no one individual directing the critique, just your fellow artists and peers. Facilitated/monitored by Rich Harrington, PSC President



Thanks to PSC member volunteer **Rich Harrington** for organizing and monitoring this event

Photo Circle: TBD



We will discuss new group activities and possibilities for expansion. The Photo Circle meets every 2nd Thursday at 6:30 PM. You can contact Steve anytime at stphniwan@gmail.com or 215-300-9192 (cell). **Steve Iwanczuk**, Photo Circle Monitor and Member of Philadelphia Sketch Club Board of Directors.

Thanks to PSC member volunteer **Steve Iwanczuk** for organizing and monitoring this event.

Art Natters: Members News

Visit Sketch Club Online Gallery

Go to the Sketch Club's on-going open gallery to see recent updates with work by PSC members and friends:

<http://sketchclub.org/sketch-club-open-gallery/>.

Members and friends can submit up to 4 images. Send your submissions to:

portfolio@sketchclub.org.

Include for your work: Your name; Title; size; and medium.

For photos of yourself include: Who you are and a brief description of the the image.

Sketch Club member **Susan Barnes** received Honorable Mention for her oil painting "Blues Last Song" in the Medford Art Center's 2021 Wild Things Juried Exhibition Online. The exhibit runs through May 13 and can be viewed on Medford Arts YouTube channel. While there please subscribe to the MAC channel.

For more information, go to: <https://www.medfordarts.com/>



Blues Last Song

Gallery hours: By appointment: Wednesday, Friday, Saturday, Sunday: 1 PM to 5 PM

May 2021

Art Natters: Members News

Another traveling painting from Sketch Club member **Thomas Furey**. I saw these neat little bottles at a coffee shop in Langhorne, Pa. It was about four years ago my friend Marty Shively, was having a show that Karen and I attended. It was a cool coffee shop with Art on the walls and a band playing. I noticed these bottles high on a shelf and there were about thirty different sauces. I never knew there was so many varieties of Hot Sauce! I might even paint some more varieties!

Title: Hot Stuff, Medium: Oil on Linen, size: 11 x 14", Price: \$1200

I would also like to share with our members the Artists of Bristol on the Delaware "Corona-Art AOB Style" [Corona-Art AOB Style](#)



Hot Stuff, Medium: Oil on Linen, size: 11 x 14", Price: \$1200

Art Natters: Members News

Origin of Wonder Artists' Gallery: 18 Bridge Street, Lambertville, NJ, 08050

www.lambertvillearts.com

Featured artists' exhibit Thursday, May 6th to Sunday June 6th, 2021.

Paintings by gallery artists including Sketch Club member **Laura Rutherford Renner** featuring work in oil.

"Origin of Wonder" invites you to pause, to see, to remember the wonder of the world that we share with you.

Laura Rutherford Renner, from Collingswood, NJ, enjoys painting figures engaged in the experience of their environments. "Capturing these interactions in two dimensions is an exercise and a source of calm. I relish mixing pure colors, keeping my palette simple to create authentic observation. The quiet engagement of brush to palette and brush to board provides meaning for me every day". Laura, an occupational therapist for the past 27 years, is currently working with young students in public school, aged 3-13 years old, on life skills and academic tasks.



Waiting for a Connection by Laura R Renner

laurarrenner@gmail.com

<https://www.laurarutherfordrenner.com/>

Art Natters: Members News

From Sketch Club **Member Colleen Hammond**



ABOUT THE EXHIBITION:

The Rainbow Show is a debut collaboration by 26 artists of Philadelphia CollageWorks. Each artist created small, monochromatic collages in appreciation of the spectrum as showcased in the rainbow. The hundreds of small works in this exhibition are hung by color: yellow, green, blue, purple, red, orange, brown, and black to create a glowing rainbow that surrounds the Da Vinci Art Alliance upstairs gallery. The diverse styles and techniques of the many artists involved are highlighted as they stand in ideological harmony in support of the Philadelphia LGBTQ community and of Black Lives Matter.

The Rainbow Show hopes to become a symbol of unity, hope and better things to come.

The Rainbow Show coincides with World Collage Day on May 8th. Philadelphia CollageWorks will create collage kits to distribute to the Philadelphia community to encourage people of all ages to know the joy of making collages.

ABOUT PHILADELPHIA COLLEGEWORKS:

Philadelphia CollageWorks was established by a group of artists in the Philadelphia area in 2019 to promote collage as a unique art form. PCW supports the creation, study and appreciation of collage, assemblage and related mixed-media art.

Philadelphia CollageWorks includes artists Alan Lankin, Annie Stone, Arlene Solomon, Bernadette Colburn, Candace Stoudt, Catherine Gontarek, Colleen Hammond, Danielle Gatto, Deena Flanagan, Elsa Wachs, Felise Luchansky, Florence Weisz, Gregory Laut, Heather Sandler, Jay Roth, Kara Mshinda, Linnie Greenberg, Robb Spath, Rueben Das, Sandra Benhaim, Sandra Koberlein, Sharon Ostrow, Sue Apter, Virginia Conover, Wendi Furman, and Wendy Raskas Greenberg.

The public is invited to a virtual opening of The Rainbow Show on Zoom at 3pm on April 25th.

The exhibition will be on view by appointment April 22nd - May 9th 2021 at Da Vinci Art Alliance and as a recorded video tour on the Da Vinci Art Alliance website.

<https://davinciartalliance.org/current-exhibitions>

**Da Vinci Art Alliance
704 Catherine Street
Philadelphia, PA 19147**

Collage work by PSC member, Colleen Hammond



Fish & Game 4" x 6"



Counter Balance 4" x 6"



The Florist 4" x 6"

Gallery hours: By appointment: Wednesday, Friday, Saturday, Sunday: 1 PM to 5 PM

May 2021

Art Natters: Members News



“Water and Life”

Soma New Art Gallery, Cape May, NJ, - OPENING THIS SATURDAY MAY 1st 6-9 pm!

Sketch Club member **Annette Alessi Solo Exhibition** is opening this Saturday, May 1st at [Soma Art Gallery](#) in Cape May, NJ from 6:00 pm to 9 pm. The Show will also be shown on the website of [Soma Art Gallery](#). Don't miss out! Seeing in person is always so much more appreciated! Looking forward to sharing this wonderful series of works with you and your family and friends!

Sketch Club member **J. Clayton Bright** at Ladew Topiary Gardens

Ladew Topiary Gardens is celebrating its 50th Anniversary and they invited J. Clayton Bright to be sculptor-in-residence during the 2021 garden season. There will be 20 some of his life-size bronze sculptures located throughout the garden. The garden is open 1 April – 31 October. Ladew Topiary Garden, 3535 Jarrettsville Pike, Monkton, MD 21111. Go to: <http://ladewgardens.com> for open days and times.



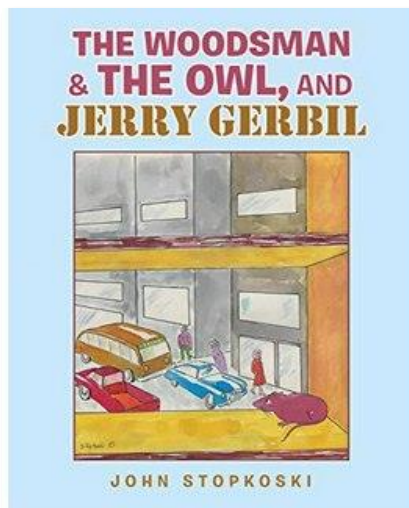
Art Natters: Members News

From Sketch Club member **Marialice Stanzas**
Rutgers University of Arts and Sciences – Camden – B.F. A.



Collings Lake, watercolor 7"x10".

Sketch Club member **John Stopkoski** illustrated and published his new book.



Gallery hours: By appointment: Wednesday, Friday, Saturday, Sunday: 1 PM to 5 PM

May 2021

Sketch Club Open Workshop Schedule

All workshops are open to the public. There is no need to register before attending. You do NOT have to be a member of the Philadelphia Sketch Club to participate in the workshops. Our workshops are open to anyone who is interested in drawing, painting or printmaking. All skill levels are welcome. Fees: Model workshops: \$8/session members, \$9/session for non-PSC members; Printmaking workshop: \$10/session; All workshops \$6 for full-time students. Monitored by PSC members.

Life Model	Costumed Model	Printmaking
<p>Mondays – 5, 20, and 40-minute poses: 6:30 PM-9:30 PM Monitors: Jackie Barnett and Tom Kohlmann</p> <p>Tuesdays – Extended pose: 12:00 PM to 3:00 PM Monitor: Jacqueline Barnett</p> <p>Wednesdays – Extended pose: 6:30 to 9:30 PM Monitor: Vince Docktor</p> <p>Saturdays – Extended pose: 9:30 AM to 12:30 PM Monitor: Vince Docktor</p>	<p>Thursdays Extended pose 12:00 PM to 3:00 PM Monitor: Bob Bohne.</p>	<p>Tuesdays 10:00 AM to 2:00 PM Monitor: Elizabeth H. MacDonald</p>

Please Note: Those who use oil paints should bring their own container(s) to remove used solvents. Odorless solvents only.

Thank you to all the PSC members who donate their time and expertise to make these workshops available to PSC members and the Philadelphia art community.

Opportunities/Notices

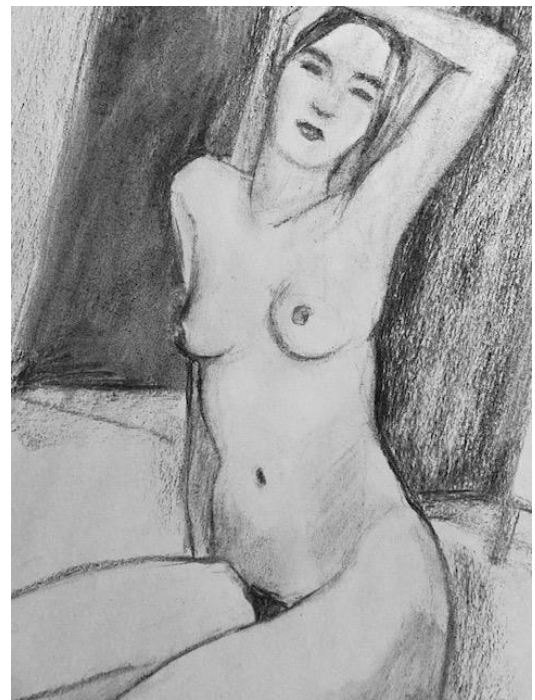
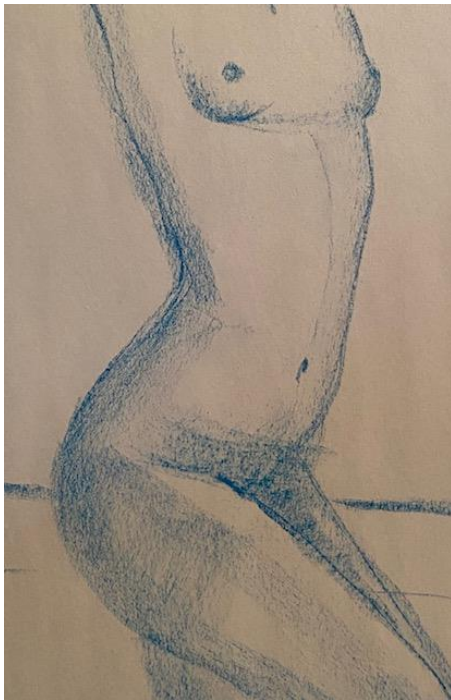
Call for Art: Medford Arts Center-

2021 Just Faces Juried Exhibition Online - People, Pets & Other Creatures (all media).

- Deadline for submissions is Monday, May 10th at 12 midnight on EntryThingy.com.
- Prospectus and info at- <https://www.medfordarts.com/2021just-faces-juried-exhibition-online.html>
- Show dates May 14 - June 10.

Valerie Yoder sketched some live models via Zoom last week - felt good!

Anna 1 and Anna 2, 18 x 24, Charcoal/pastels on newsprint



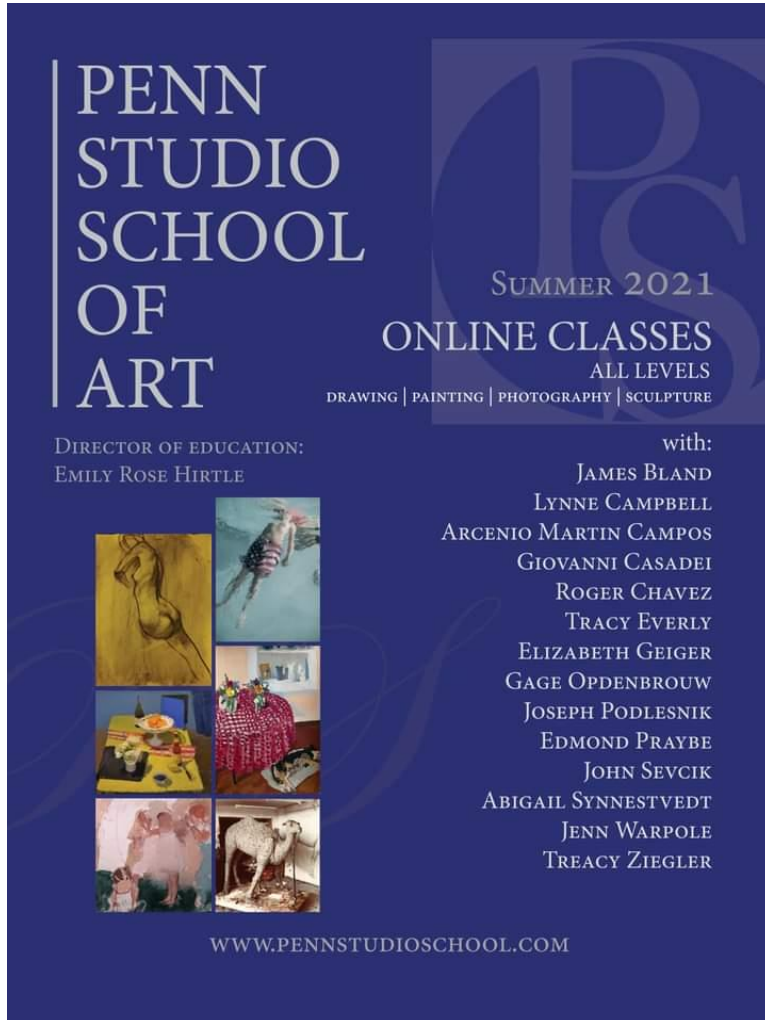
Since many of us are still waiting to get drawing from life, I've found some sources of people who model from their homes. I have drawn this woman several times and she's always nice, professional and willing to take direction and requests. She lives in France, so I usually draw her around 3pm, maybe we can try something like this? She charges around \$10 a person for 2 hours via Zoom, and also provides a playlist.

Let me know if you are interested, I can ask her about her availability!

Valerie Yoder (you can contact Valerie through the PSC at info@sketchclub.org)

Opportunities/Notices

New Art School



**PENN
STUDIO
SCHOOL
OF
ART**

**SUMMER 2021
ONLINE CLASSES**
ALL LEVELS
DRAWING | PAINTING | PHOTOGRAPHY | SCULPTURE

DIRECTOR OF EDUCATION:
EMILY ROSE HIRTLE

with:

JAMES BLAND
LYNNE CAMPBELL
ARCENIO MARTIN CAMPOS
GIOVANNI CASADEI
ROGER CHAVEZ
TRACY EVERLY
ELIZABETH GEIGER
GAGE OPDENBROUW
JOSEPH PODLESNIK
EDMOND PRAYBE
JOHN SEVCIK
ABIGAIL SYNNESTVEDT
JENN WARPOLE
TREACY ZIEGLER

WWW.PENNSTUDIOSCHOOL.COM

Emily Rose Hirtle started the Penn Studio School of Art. Offerings include: Fine art classes for the summer. I have fantastic 14 teaching artists offering exceptional 4 week online and in person pleinair classes this Summer. Attached is the link to my school's website:

<https://pennstudioschool.com/>

Also here is the link to the online and in-person classes offered during the Summer:

<https://pennstudioschool.com/classes>

Emily Rose Hirtle
Director of Education
Penn Studio School of Art

Opportunities/Notices

Waterloo Arts invites all artists residing in the US or Canada to submit artwork for the 2021 Waterloo Arts Juried Exhibition. This is a unique opportunity for artists to exhibit work in the Waterloo Arts District in Cleveland, Ohio. This is the seventh year Waterloo Arts has held a nation wide juried exhibition. Over \$1,500 in cash prizes will be awarded. As in past years, Waterloo Arts will also offer a small stipend to all accepted artists to help defray costs associated with entry and shipping. Due to previous commitments and COVID 19, this year's exhibition will be held in the Waterloo Arts Gallery only and will not be expanded into Praxis Fiber Workshop and Brick Ceramic + Design.

2021 Waterloo Arts Juried Exhibition

WA
2021
WATERLOO ARTS
JURIED EXHIBITION
AUGUST 8 -
SEPTEMBER 18



DEADLINE TO ENTER:

May 16, 2021

Exhibition dates:

OPENING:

August 6, 2021

CLOSING:

September 18, 2021

Waterloo Arts is pleased to announce it is accepting applications for the 2021 Waterloo Arts Juried Exhibition.

JUROR: TBD

over \$1,500 in CASH AWARDS:

Best of Show: \$500

Second Best of Show: \$250

NEOH Artist CAN Journal prize: \$250

Honorable Mentions: \$100

ELIGIBILITY:

- Artists must be at least 18 years of age and reside in the US or Canada
- Artist may submit up to three (3) pieces of original art in any 2-D or 3-D media
- Work exceeding 36 inches in any dimension will be excluded due to space restrictions
- All work must have been executed within 5 years and not previously shown at Waterloo Arts
- Entries must remain in the gallery for the duration of the exhibition
- Artists grant permission for Waterloo Arts to use their images in promotional materials
- Artists agree to have their artist information included in show materials
- Time based, electronic media, performance art, and installations will NOT be accepted
- Work not conforming to entry guidelines may be excluded from exhibition at jurors' discretion

FEES: \$30 Non Refundable Entry Fee

TIMELINE:

March 15, 2021 – Call for entry opens
May 16, 2021 – Call for entry deadline
May 16 to June 30 – Juror review
July 1 – approximate date of notification sent to accepted artists
July 1 – 25 shipping and delivery of artwork
July 25 – last day to deliver/receive work
August 6, 2021 – first Friday opening
September 18, 2021 close



TO APPLY ONLINE AND FOR MORE INFORMATION:

<http://waterlooarts.org/2021-waterloo-arts-juried-exhibition>

For more information:

<http://waterlooarts.org/2021-waterloo-arts-juried-exhibition/>



Opportunities/Notices

As a courtesy to our non-PSC-member friends, in support of the Philadelphia artist community, we publish your notices, etc., free of charge. However, contributions to the PSC are always welcome. And, we will gladly consider your application for membership

[Contribute to the Sketch Club Here](#) [Apply for PSC Membership Here](#)

Membership

Stay in touch with current Sketch Club Members

Don't let sheltering in place prevent you from staying in touch with your Sketch Club friends and colleagues. Sketch Club members can access contact information for all current members. Go to the members only page at: <http://sketchclub.org/members-only-2/>. After you log-in with the password sent to you in your acceptance email you can click on the Membership Directory link to access members contact information. Non-Sketch Club friends can find a listing of current members along with their websites if they have one at: <http://sketchclub.org/sample-page/current-members-contact-list/>:

Recent New Sketch club Members

Not a member? Your name should be here!

- Ewa Zeller
- Mania Arabatlian

For a complete listing of Sketch Club members, go to: <http://sketchclub.org/sample-page/current-members-contact-list/>

Not a PSC Member?: Join Now!

If you're reading this edition of the Portfolio and you're not a member of the PSC, you should consider joining the more than 200 other Philadelphia area artists who have. The PSC is one of the most active visual art venues serving center city Philadelphia. The PSC is a hands-on organization that offers its members the opportunity to participate in all aspects of creating and presenting work to the public. It presents over 20 scheduled group and solo exhibitions annually and offers a wide range of daily workshops. [Get info and an application here.](#)

If you are a member of the PSC, please feel free to share the Portfolio with your artist friends and encourage them to become members.

Membership Renewal

You can check the status of your membership by going to the Current Members page on the PSC web-site: <http://sketchclub.org/sample-page/memberspace/>. All current members are listed. An asterisk (*) means that the membership has expired but is within the 60-day grace period for renewal. Names in red are active links to the individual's web site.

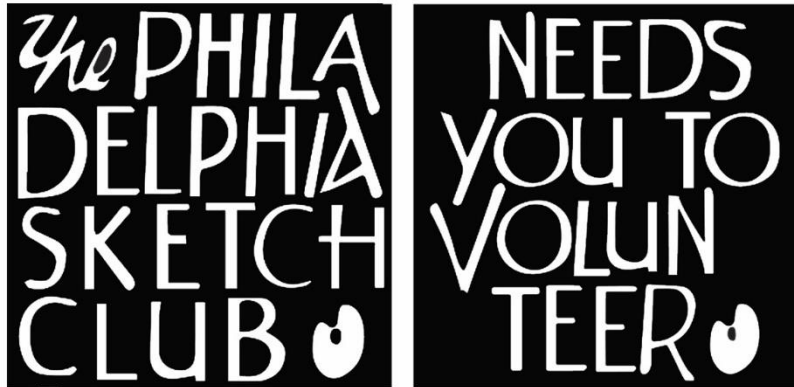
Renew Now! <http://sketchclub.org/annual-dues-payment/>

If you have any questions about your membership, please don't hesitate to contact us at membership@sketchclub.org or call the office: 215-545-9298.

Volunteer

Be an Active Sketch Club Member; Volunteer!!

The Philadelphia Sketch Club is managed entirely by volunteers except for the gallery manager, housekeeping, and bookkeeper.



The PSC always needs volunteer members. Volunteering is one of the most important aspects of being a Sketch Club member and it is the one of the best ways to take advantage of the PSC. You'll be working with colleagues who share the same interests and helping the PSC provide unique services to the visual arts community. Sign up for an activity today.

Here are some of the activities that volunteers perform:

- Chair exhibitions
- Assist in hanging exhibitions
- Covering exhibition drop-offs and pick-ups
- Monitor workshops
- Assist with presentations
- Serve on the Board of Directors
- Serve as Key Circle volunteers
- Publish the Portfolio
- Manage the PSC web site
- Gallery coverage
- Graphics for Portfolio, PSC web site, social media
- Assist in every aspect of managing the club and providing member services

To get involved, contact us at: info@sketchclub.org

Support the Sketch Club

Contribute

Please consider making your tax-deductible contribution now. These funds will be put to good use providing enhanced services to our members and friends.

Membership dues cover only a small portion of the PSC's operating expenses. Competition for funding for arts organizations like the Sketch Club is increasingly competitive and total funding for the arts is shrinking. Your additional support will keep the PSC an active support for visual artists in the Metropolitan Philadelphia area. The Philadelphia Sketch Club is an IRS designated 501(c) (3) non-profit organization.

You can call the office at 215-545-9298, mail checks to the Sketch Club or visit the Contribute page of our Website.

Visit our **Contribute** page of our website to give online at:

<http://sketchclub.org/support-us/>

You can also support the PSC on an ongoing basis when you shop on Amazon. Go to:

<http://smile.amazon.com/> and enter the Philadelphia Sketch Club in the Pick your own charitable organization box.

Your support makes it possible for the PSC to continue providing ongoing daily workshops and numerous annual gallery exhibitions.

Like, Link & Share

If you're not following the Philadelphia Sketch Club on Facebook re-tweeting Sketch Club tweets yet, it's time that you did. We have well over 2000 Facebook followers. Get the word out about the Sketch Club. Please click the like button and share your comments and invite your friends to like our page.

Follow @PhilaSketchClub on Twitter, we have almost 400 followers. Please click the heart button and re-tweet our announcements.

Include links on your website, blogs and social media to The Philadelphia Sketch Club to increase traction across social media platforms.

Follow us on Facebook, Twitter and Instagram now!



Member Classifieds



Sketch Club member **Kathy Firpo** has moved to Florida and wants to donate her mat cutter to anyone in the Sketch Club. Contact Diane Hark at dianeharkart@aol.com for details.



Gallery hours: By appointment: Wednesday, Friday, Saturday, Sunday: 1 PM to 5 PM

May 2021

The Portfolio: The newsletter of the Philadelphia Sketch Club is published monthly. Editor, technical support and webmaster: Ken Weiner. Send your member news, announcements and corrections to portfolio@sketchclub.org. The due date for all materials is one week before the end of the month.

Back issues of the Portfolio are available at: <http://sketchclub.org/portfolio-archive/>

Thanks to PSC member volunteer **Ken Weiner** for his ongoing support of Sketch Club technology and communications functions.

The Philadelphia Sketch Club

235 S Camac Street
Philadelphia, PA 19107
(215) 545-9298
<http://sketchclub.org/>
gallerymanager@sketchclub.org
info@sketchclub.org

Gallery Manager: Kaylie Minzola

Officers:

- President: Richard Harrington
- Vice President: Kenneth Weiner
- Secretary: Elise Anzini
- Treasurer: William Patterson

Board of Directors

- Jacqueline Barnett
- Renard Edwards
- Stephen Iwanczuk
- Edward Pluciennik
- Charles F. Tarr
- Gail Williams