

Gallery hours: By appointment: Wednesday, Friday, Saturday, Sunday: 1 PM to 5 PM

July 2021

## Welcome Back to the Philadelphia Sketch Club!

## July 2021



Rich Harrington

**See our new workshop schedule on page 4**

### This Month's Portfolio

Sketch Club Special Events	2
Sketch Club Critique Group	8
Main Gallery Schedule	10
Stewart Gallery Schedule	11
Sketch Club Activities	12
Sketch Club Open Workshop Schedule	21
Opportunities/Notices	22
Membership	25
Volunteer	26
Support the Sketch Club	27
Member Classifieds	27

Send your member news, announcements and corrections to: [portfolio@sketchclub.org](mailto:portfolio@sketchclub.org). The deadline for ALL submissions is 1-week before the end of the month.

Reminder: It's never too late. You can always renew your membership

You may pay online at <http://sketchclub.org/annual-dues-payment/> or mail your check to:

The Philadelphia Sketch Club

235 S. Camac St.

Philadelphia, PA 19107

For questions please contact the Gallery Manager at 215-545-9298 or email:

[gallerymanager@sketchclub.org](mailto:gallerymanager@sketchclub.org)

Late Breaking News – See items that were submitted after the publication date. Go to:

<http://sketchclub.org/late-breaking-news/>

The PSC general email is: [info@sketchclub](mailto:info@sketchclub)

## Sketch Club Special Events

### The 161<sup>st</sup> Anniversary Gala



### The Philadelphia Sketch Club's 161st Anniversary Gala

Saturday, October 16th, 2021  
6 to 10 PM *(Revised date!)*

*Honoring*  
**John Ennis • Jane Golden**  
**James Toogood**

Medal Presentation, Live Art Auction,  
Silent Auction, Cocktails,  
Deluxe Hors d'oeuvres, Live Music



*For more information  
and to buy tickets visit  
[www.sketchclub.org](http://www.sketchclub.org)  
or call 215.545.9298*

*Photo by Kyle Cassidy*

## Sketch Club Special Events

### Sketch Club On-Line Gallery: **Always Room for More Work!**

There's always room for more work: Submit Now!

The Sketch Club is hosting an on-going open gallery at: <http://sketchclub.org/sketch-club-open-gallery/>. This gallery is open to PSC members and non-members.

Submit up to 4 images of your work or of yourself working along with a very brief description to: [portfolio@sketchclub.org](mailto:portfolio@sketchclub.org).

Include for your work: Your name; Title; size; and medium.

For photos of yourself include: Who you are and a brief description of the image.

Gallery hours: By appointment: Wednesday, Friday, Saturday, Sunday: 1 PM to 5 PM

July 2021

## Sketch Club Special Events

### Opening Events Consistant with CDC guidelines

The Sketch Club is offering in-person workshops in compliance with CDC guidelines.

*Welcome Back!*

Sketchclub.org • (215) 545-9298 • 235 S Camac St, Philadelphia, PA 19107

*Workshops*

#### Fees

\$9 Model Workshop sessions, \$8 for members

\$6 for full time students

Model Tips are optional but appreciated

\*\*\*Bring your drawing and painting materials!\*\*\*



Member feedback:

*"Thanks for the notice.  
And thanks for  
opening..."*

*I can't wait. I never  
realized how much the  
Sketch Club and  
getting out of my  
studio meant in my  
life".*

Rich Alliger

*Life Model*

Tuesday	12:00 pm - 3:00 pm Extended pose	Monitor: Jacqueline Barnett
Saturday	9:00am - 12:30pm Extended pose	Monitor: Jacqueline Barnett

*Costumed Model*

Thursday	12:00pm-3:00pm Extended pose	Monitor: Bob Bohne
----------	---------------------------------	--------------------

Tables, chairs, and easels provided. Please bring your own supplies  
Vaccination required for entry

## Sketch Club Special Events

### Workshop Attendee Responsibilities

During this period of returning to normal, we must remember to observe that some may choose be wearing masks and to respect a 6 foot distance.

Fees will be collected after the second pose. \$9 for non-members, \$8 for members, \$6 for full time students.

When setting up, please give space for others behind or in front of you. Make sure those in back can see the model.

Please observe the easel arrangement in the storage closet and replace your easel in the same manner.

Please make every effort to wipe down your easel when leaving and make sure around your easel is clear of charcoal or pastel dust.

Please put back your easel if leaving early. Use the 10-minute rest to clean up.

Please to not use turpentine for oils.

Please do all aerosol spraying outdoors, front or back yard.

If there is a change in the models pose, please inform the monitor instead of the model.

There will be two snacks available each week. The person who brought them will take these home, only coffee and tea will remain in the cabinet.

Please try to come in early to find an optimal spot to work in, and also not to cause as much disturbance during workshop time.

Anyone who needs a locker or has fees for a locker should talk to Chuck Tarr, usually here on Tuesdays, or contact the office at 215-545-9298.

Thank you for your efforts to make workshops as efficient and rewarding as possible!

## Sketch Club Special Events

### On-Line Resources

- The Sketch Club Critique Group: <https://www.facebook.com/groups/PSCCritique>
- The Sketch Club Open Gallery: <https://sketchclub.org/sketch-club-open-gallery/>
- The Sketch Club's web site: [sketchclub.org](http://sketchclub.org)
- Our Facebook page: <https://www.facebook.com/thesketchclub/>
- Instagram: <https://www.instagram.com/philadelphiasketch/>
- Twitter: <https://twitter.com/PhilaSketchClub>
- Members: Stay in touch with other PSC colleagues. For contact information, go to the members only page at: <http://sketchclub.org/members-only-2/>. See Stay in touch with current Sketch Club Members in the members section below for instructions.

**Non-Sketch Club friends can find a listing of current members names and business websites if they have one at:**

**<http://sketchclub.org/sample-page/current-members-contact-list/>.**

### Support the Sketch Club through Amazon Smile

Make free donations to the Sketch Club anytime you shop at Amazon Smile. Remember that anyone who purchases through Amazon can have Amazon make a contribution to the Club for most every purchase you make. Just log in and go to: [smile.amazon.com](http://smile.amazon.com) -From there you can select the Philadelphia Sketch Club as your non-profit charity . Done. Then the Club receives a percentage of most every purchase you make. It is a painless way to contribute to the Club's welfare. Most purchases made on your mobile app and from Whole Foods qualify too! Go to [smile.amazon.com/about/](http://smile.amazon.com/about/) to learn more.

## Sketch Club Special Events

### Ongoing Facilities Renovation

Minor projects are ongoing. We can't wait to share our updated home with our members and friends. Major work on the upstairs gallery and stairways is complete.

#### Additional work recently completed includes:

- Refurbish model stage and other accessories
- Exterior Painting
- Replace men's room sink faucet
- Refinishing gallery steps
- Reorganizing the ratskeller (basement)
- Repair of roof leak and repair Gallery cracks in ceiling and upper walls and area was painted
- Replace AC circuit board
- Paint upstairs gallery lockers
- Paint upstairs gallery storage closet interiors
- Repair ceiling tiles in the upstairs storage area
- Annual service of heating and AC units
- Major servicing of water/sewer services
- Lighting upgrade in Rathskeller
- Lighting upgrade in back stairway
- Lighting upgrade in water heater utility closet
- Numerous other refurbishing, repairs, and required services



**We need your help:** This required maintenance of our Sketch Club home is costly. We ask our members and friends to help keep the PSC financially healthy. Friends, please consider contributing to our maintenance fund. Members, please consider financial support beyond membership.

Contribute Now! [Make an On-line Contribution](#)

## Sketch Club Critique Group

### The Sketch Club Critique FaceBook Group

#### Curator's Pick – Don Gauger

The concept of "Virtual Reality" (VR) artist tools is covered nicely in a BBC online article "*Google's Tilt Brush VR painting app goes open source*".

Be sure to watch the video "3D painting makes audiences part of the art" further down the page to witness 3-dimensional painting demonstrations.

Link: <https://www.bbc.com/news/technology-55826249>



#### Join the Critique Facebook Group

Join your Club colleagues online at the "Philadelphia Sketch Club Critique"-- a Private group for Active PSC members only on Facebook.

Colleagues, please join in and contribute to your online art community. We all miss the camaraderie we enjoy at the Club house. The "Philadelphia Sketch Club Critique" is a chance to get together online until we can gather once more around the punch bowl and raise a toast, "to the Sketch Club, past, present and future."

#### Here's how it works:

- Active members go to the new "Philadelphia Sketch Club Critique" page and request access, which is available to all Club members in good standing.
- Once in post your work and watch as other members' post their artwork for critique.
- More details will be posted within the group including the option to be considered for a monthly "Highlights", a curated online gallery to be published on our external site/Instagram/Twitter channels.

This FaceBook Group is private; this means that as Members submit their work others are invited to critique each other in a professional and respectful way.

#### Critique Group Links:

- You can find a link on the Sketch Club website: <https://sketchclub.org/>
- The Critique Group's Facebook Page: <https://www.facebook.com/groups/PSCCritique>
- The PSC's main FaceBook page: <https://www.facebook.com/thesketchclub>

## Sketch Club Critique Group

### PAINT ALONG THE TRAIL

Paint along the Trait Plein Air on Harvey Run Trait

Painters of all skill levels are invited to explore the Harvey Run Trail where they can sketch, paint and photograph this iconic countryside.

July 21, 2021, 10am until Dusk

Fee: \$20.00 per person

Please be advised that parking is available at the Township Building. Participants will have access to water and a restroom at the Township Building. Participants will be responsible for providing all art materials and transporting all materials to and from the location

For more information and a registration form by email contact: Maryann Furlong, Township Manager by email, fax, regular mail, or in-person.

Chadds Ford Township 10 Ring Road, Chadds Ford, PA 19317

PH: 610-388-8800 ext. 100

FX: 610-388-5057

EMAIL: admin@chaddsfordpa.gov

A link to the trail map:

<https://chaddsfordpa.gov/vertical/Sites/%7BB1D00309-8C27-4983-8D0E-3AA8F371EC5F%7D/uploads/harvey-run-signs-24X36-chaddsford.pdf>

### If you are hearing a buzz about "NFT"s and want to know a little more, here are two articles. - Don Gauger

**Definitions:** Cryptoart, or NFT art (NFTs are so-called nonfungible tokens)

NFTs and AI Are Unsettling the Very Concept of History -- Wired Magazine

<https://www.wired.com/story/nfts-and-ai-are-unsettling-the-very-concept-of-history/>

**NFTs Are Hot. So Is Their Effect on the Earth's Climate -- Wired Magazine**

<https://www.wired.com/story/nfts-hot-effect-earth-climate/>



If you are following the news around the new NFT marketplace for artwork you may find this crypto-currency article interesting. You need an online WSJ account, or could read it at your public library. -- Don Gauger

[https://www.wsj.com/articles/ethereum-is-booming-in-the-nft-frenzyso-is-network-congestion-11620050853?](https://www.wsj.com/articles/ethereum-is-booming-in-the-nft-frenzyso-is-network-congestion-11620050853?hpid=hp_hp-top-table-main-nft2%3Aethereum-is-booming-in-the-nft-frenzyso-is-network-congestion%3Ahomepage%2Ft%2Fdon-gauger&hpt=hp_hp-top-table-main-nft2%3Aethereum-is-booming-in-the-nft-frenzyso-is-network-congestion%3Ahomepage%2Ft%2Fdon-gauger)

Copyright ©2020 Dow Jones & Company, Inc. All Rights Reserved. 87990cbe856818d5eddac44c7b1cdeb8

The article appeared in the May 4, 2021, print edition of the Wall Street Journal as 'NFT Frenzy Fuels Bitcoin Rival's Boom.' Written by Paul Vigna paul.vigna@wsj.com

Gallery hours: By appointment: Wednesday, Friday, Saturday, Sunday: 1 PM to 5 PM

July 2021

## Main Gallery Schedule

[See the Sketch Club Open Gallery](#)  
[See the 2021 Exhibition Schedule](#)  
[Important Dates for all PSC Activities](#)

### PSC PHOTOgraphy 2021 Exhibition

A virtual exhibition Online July 26 – August 31, 2020

**Call for Submissions Submission Deadline Midnight July 21, 2021**



Virtual Opening: July 26, 2021, at 7:30 PM: Meet the Juror, Craig Stover, and award winners

**See the Prospectus for complete details:** [Photography prospectus 2021](#)

**Go to EntryThingy to submit work:** [entrythingy.com](http://entrythingy.com)

Gallery hours: By appointment: Wednesday, Friday, Saturday, Sunday: 1 PM to 5 PM

July 2021

## Stewart Gallery Schedule



**Exhibition space in  
the Stewart Gallery  
is available for PSC  
Members!**

Reserve the gallery by  
contacting our  
Exhibition Coordinator:  
[exhibitions@sketchclub.org](mailto:exhibitions@sketchclub.org)

The space is \$150 for a  
month. Members can  
show once in the Stewart  
Gallery per year.

[See the Sketch Club Open Gallery](#)  
[See the 2021 Exhibition Schedule](#)  
[Important Dates for all PSC Activities](#)

## Sketch Club Activities

### Critique Night: TBD

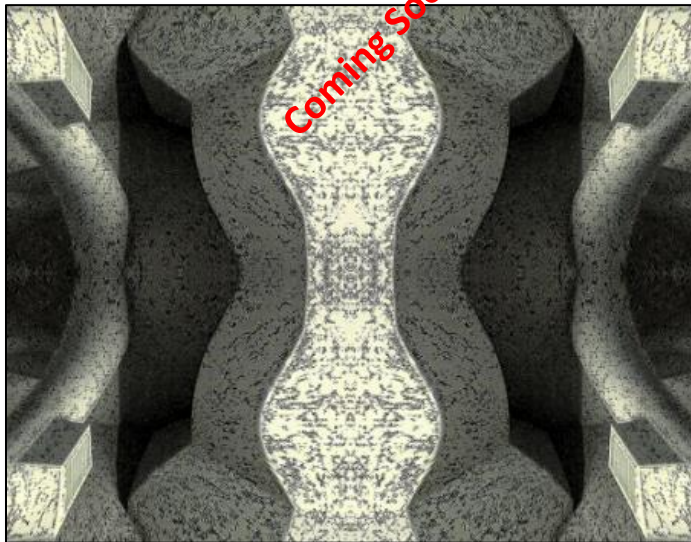
Open to PSC Members and Non-Members

Critique Night is held in the Library of the Sketch Club every third Wednesday beginning at 7 PM. Bring work you have finished, work in progress, or just sketches for work you're planning! Photos, digital work, drawings, all mediums are welcome; we can project digital images on a screen for review, so you have the option to show work that may be too big or too heavy to transport to the Club. There is no one individual directing the critique, just your fellow artists and peers. Facilitated/monitored by Rich Harrington, PSC President



Thanks to PSC member volunteer **Rich Harrington** for organizing and monitoring this event

### Photo Circle: TBD



We will discuss new group activities and possibilities for expansion. The Photo Circle meets every 2<sup>nd</sup> Thursday at 6:30 PM. You can contact Steve anytime at [stphniwan@gmail.com](mailto:stphniwan@gmail.com) or 215-300-9192 (cell). **Steve Iwanczuk**, Photo Circle Monitor and Member of Philadelphia Sketch Club Board of Directors.

Thanks to PSC member volunteer **Steve Iwanczuk** for organizing and monitoring this event.

## Art Natters: Members News

### Visit Sketch Club Online Gallery

Go to the Sketch Club's on-going open gallery to see recent updates with work by PSC members and friends:

<http://sketchclub.org/sketch-club-open-gallery/>.

Members and friends can submit up to 4 images. Send your submissions to:

[portfolio@sketchclub.org](mailto:portfolio@sketchclub.org).

Include for your work: Your name; Title; size; and medium.

For photos of yourself include: Who you are and a brief description of the the image.

Sketch Club member **Marialice Stanzeski's** "What I Saw Along the Silk Route"; 2021; 50" x 20"; Oil on Canvas



What I Saw Along the Silk Route

## Art Natters: Members News

Sketch Club member **Robert Beck** at the Michener Art Museum

The Artistic career of Robert Beck—awarded the PSC Medal for Contribution to the Arts in 2014—is being examined in a retrospective by the Michener Art Museum, Doylestown PA, opening July 30.

For more than three decades, Beck has been an integral part of the regional art community, particularly in New Hope and Lambertville, New Jersey, as both a leader and an iconoclast. More than a “Best Of” exhibit, the Michener’s presentation of *It’s Personal: The Art of Robert Beck*, is the remarkable story of a contemporary artist establishing a voice, becoming part of a community, and creating an extraordinary body of work that will resonate for many years.

The exhibition, which runs through January 2, 2022, contains 60 paintings. It is accompanied by a volume of Beck’s ICON Magazine essays, and a 220-page catalogue, along with videos, relevant artifacts, and multiple community outreach events.

*It’s Personal, The Art Of Robert Beck*, is curated by David Leopold, author of books on the work of Al Hirschfeld, Irving Berlin, and David Levine. Leopold has organized exhibitions for the Library of Congress, The New York Public Library, The Norman Rockwell Museum, and the Field Museum.



Robert Beck, “Love's Notions and Novelties”, 2004, oil on panel, 24x30

For more information on *It’s Personal, the Art of Robert Beck*, visit:  
[www.michenerartmuseum.org](http://www.michenerartmuseum.org) or  
[www.robertbeck.net](http://www.robertbeck.net).

## Art Natters: Members News

People often look at Sketch Club member **Gail S. Kotel's** work and want to know how she paints backwards. "In my brain, it's not backwards, but rather the perfect technique for a dyslexic person. Back when she was a kid, Gail noted these learning differences were not noticed or addressed. She knew her brain was different, and she just learned how to compensate, usually having to work harder than her peers. She imagines it is why she is drawn to grids with her art, (using windows and frames, take-out containers, even bubble wrap and non traditional materials), helps her brain to have a structure. Gail states: "I started as a printmaker and it was never hard for me to visualize that the finished paper print would be the reverse of what was on the printing block. With monoprints, I found it frustrating how much paint was left behind on the glass after the print was made, and began just painting directly on glass. I loved the light, transparency, and flatness of it as well as the ability for distortion. There is an immediacy of painting on glass and the way the paint sits on the surface as opposed to being absorbed into it that I so love."



Art is Pilates Oil on Found Window 36x33

Gail Kotel is grateful to have found a material that suits her personality and is quick, fun, immediate and yes, backwards.



The Gentleman's Gentleman Oil on Found Window, Mixed Media 2010 29X34X6



Art Is Ageless Oil on Glass and Mixed Media 21x34 2010



Supportive Oil on Glass Found Frame 2006 31x31

## Art Natters: Members News

Sketch Club member **Su Knoll Horthy's** latest series, Color Pops, Beautiful Transients was included in the June, Summer Edition of The Woven Tale Press, a literary and visual art magazine.



Color Pops, Beautiful Transients

## Art Natters: Members News

In the month of June Sketch Club member **Tom Furey** exhibited fifteen of the forty five paintings I completed during the Pandemic at The Free Library of Northampton Township, 25 Upper Holland Rd, Richboro, PA 18954.



Road Trim



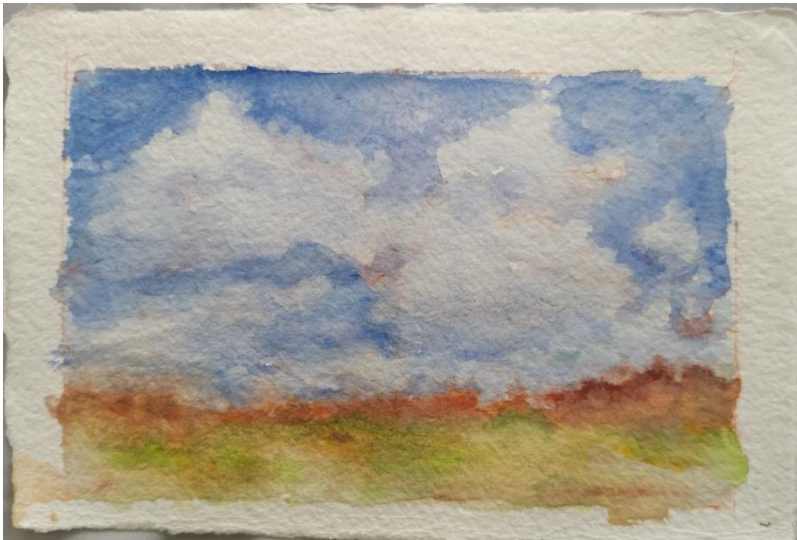
Amazing Leaves



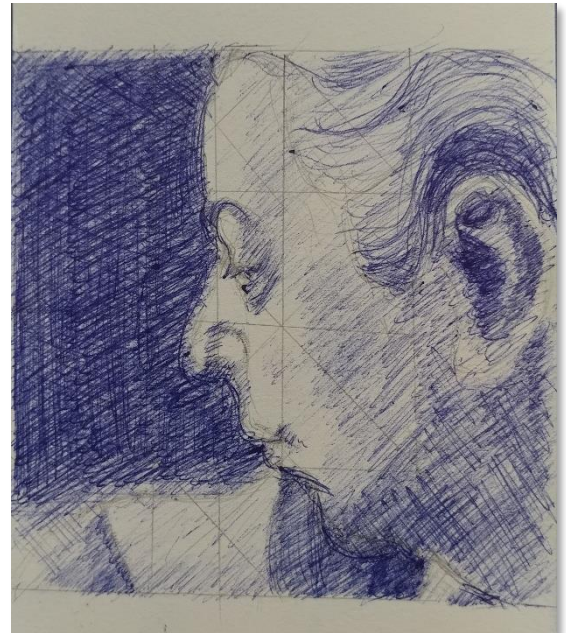
Mailboxes

## Art Natters: Members News

Three works by Sketch Club member **Alda Trabucchi**. All used photos as reference.



Sullivan's Island, 4.5" x 6" watercolor with pencil and marker on cotton rag paper



Self-portrait, 4" x 4" drawing with ballpoint pen and pencil on paper



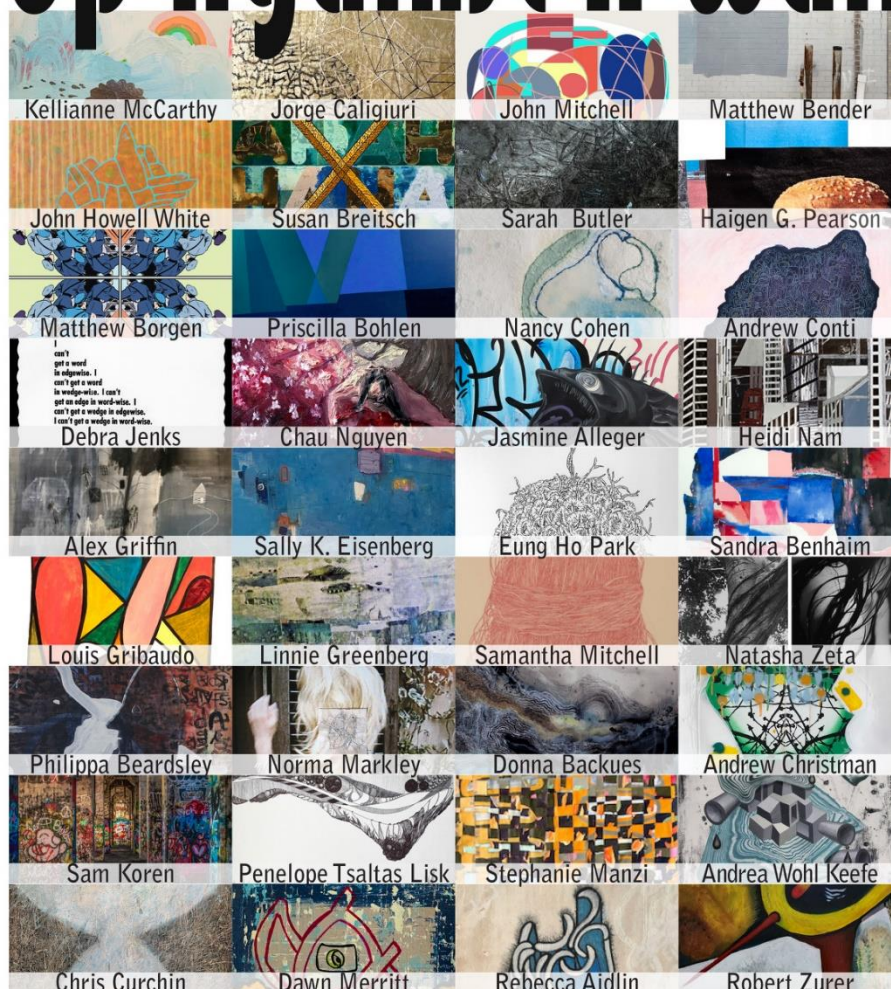
Olana, 4.5" x 6" watercolor with pencil and marker on cotton rag paper

## Art Natters: Members News

Sketch Club member **Sally Eisenberg** will be exhibiting in an upcoming group show entitled “Up Against a Wall”, taking place at eh Awbury Arboretum Cope Gallery.

- When: July 6 – August 26, 2021
- Opening Reception: Sunday, July 11<sup>th</sup> from 1-5 pm

# Up Against A Wall



**CURATED BY SUSAN BREITSCH**

AWBURY ARBORETUM COPE HOUSE

1 Awbury Road Germantown, Philadelphia 19138

July 6–August 26, 2021 • Reception July 11, 1-5

Gallery hours: Monday–Thursday 10-4 • [www.awbury.org](http://www.awbury.org) • [susanbre718@gmail.com](mailto:susanbre718@gmail.com)

## Art Natters: Members News

Using the backdrop of the iconic Queen Theater in Wilmington DE, Sketch Club member **Andy Horgan's** "Waiting for The Queen" visualizes a long 15 months of angst and dedication of the many performers and musicians wanting to do what they love, as well as the audiences waiting to see them.

Name: "Waiting for The Queen"

Artist: Andrew Horgan

Media: 18"X24" Acrylic on Canvas

18"X24" prints with captions will be available 28 June 2021, \$200, unframed, +shipping if needed.

Contact, Andy Horgan,  
txtlart@gmail.com



Andrew Horgan; "Waiting for The Queen"

## Sketch Club Open Workshop Schedule

All workshops are open to the public. There is no need to register before attending. You do NOT have to be a member of the Philadelphia Sketch Club to participate in the workshops. Our workshops are open to anyone who is interested in drawing, painting, or printmaking. All skill levels are welcome.

### Welcome Back!

Sketchclub.org • (215) 545-9298 • 235 S Camac St, Philadelphia, PA 19107

## Workshops

### Fees

\$9 Model Workshop sessions, \$8 for members

\$6 for full time students

Model Tips are optional but appreciated

\*\*\*Bring your drawing and painting materials!\*\*\*



### Life Model

Tuesday	12:00 pm - 3:00 pm Extended pose	Monitor: Jacqueline Barnett
Saturday	9:00am - 12:30pm Extended pose	Monitor: Jacqueline Barnett

### Costumed Model

Thursday	12:00pm-3:00pm Extended pose	Monitor: Bob Bohne
----------	---------------------------------	--------------------

Tables, chairs, and easels provided. Please bring your own supplies  
Vaccination required for entry

Please Note: Those who use oil paints should bring their own container(s) to remove used solvents. Odorless solvents only. See more important attendee information at: [Workshop Attendee Responsibilities](#)

Thank you to all the PSC members who donate their time and expertise to make these workshops available to PSC members and the Philadelphia art community.

## Opportunities/Notices

**Diane Tomash** work SELECTED FOR TIGHTLY JURIED PHILADELPHIA EXHIBITION Little Egg Harbor NJ, June 3, 2021. Local Artist, Diane Tomash has been accepted into the Cerulean Arts' 9th Annual Juried Exhibition. Out of nearly 400 entries, 22 were chosen. Her Painting "Super Moon" was one of those 22. She painted it en Plein air. The Exhibition dates are Wednesday, June 16 through Sunday July 18, 2021. Cerulean Arts' Gallery is located at 1355 Ridge Avenue, Philadelphia, PA, 19123. The Cerulean Arts hours are Wednesday -Friday, 10am - 6pm, Saturday & Sunday 12 -6pm, closed on Monday and Tuesday. A closing reception is planned for July 18, from 2pm - 5pm. Masks are required for all who enter the gallery. Tomash has been painting for many years. She is an elected member of the American Artists Professional League, and the Catherine Lorillard Wolfe Art Club. This Painting of the Super Moon brings a sense of mystery and atmosphere. Tomash is inspired by transitional moments in nature. When the day yields to evening, time and tide move, something exciting happens in the air. All of this breeds material for painting.



Super Moon

## Opportunities/Notices

**Pete Quarracino's** painting, "The Deep End", oil/canvas was juried into The Woodmere Art Museum Annual: 79th Juried Exhibition Seeing the Story  
06/05/2021-- 08/29/2021

### Seeing the Story

Stories are a staple of life; they let us see ourselves. They unfold over time, from the briefest moment to the fullness of a lifetime.  
- David Wiesner

Woodmere's annual juried exhibition, Seeing the Story, highlights contemporary work in a wide variety of media by artists living within fifty miles of the museum. This year's juror, David Wiesner, has selected works of visual, narrative art. The exhibition will be accompanied by an illustrated digital catalogue. Recent examples of Woodmere digital exhibition catalogues can be found by following the link below.

<http://issuu.com/woodmereartmuseum>



The Deep End",oil/canvas





## Opportunities/Notices

As a courtesy to our non-PSC-member friends, in support of the Philadelphia artist community, we publish your notices, etc., free of charge. However, contributions to the PSC are always welcome. And, we will gladly consider your application for membership

[Contribute to the Sketch Club Here](#)   [Apply for PSC Membership Here](#)

## Membership

### Stay in touch with current Sketch Club Members

Don't let sheltering in place prevent you from staying in touch with your Sketch Club friends and colleagues. Sketch Club members can access contact information for all current members. Go to the members only page at: <http://sketchclub.org/members-only-2/>. After you log-in with the password sent to you in your acceptance email you can click on the Membership Directory link to access members contact information. Non-Sketch Club friends can find a listing of current members along with their websites if they have one at: <http://sketchclub.org/sample-page/current-members-contact-list/>:

### Recent New Sketch club Members

Keith Spaar

For a complete listing of Sketch Club members, go to:  
<http://sketchclub.org/sample-page/current-members-contact-list/>

### Not a PSC Member?: Join Now!

If you're reading this edition of the Portfolio and you're not a member of the PSC, you should consider joining the more than 200 other Philadelphia area artists who have. The PSC is one of the most active visual art venues serving center city Philadelphia. The PSC is a hands-on organization that offers its members the opportunity to participate in all aspects of creating and presenting work to the public. It presents over 20 scheduled group and solo exhibitions annually and offers a wide range of daily workshops. [Get info and an application here.](#)

If you are a member of the PSC, please feel free to share the Portfolio with your artist friends and encourage them to become members.

### Membership Renewal

You can check the status of your membership by going to the Current Members page on the PSC web-site: <http://sketchclub.org/sample-page/memberspace/>. All current members are listed. An asterisk (\*) means that the membership has expired but is within the 60-day grace period for renewal. Names in red are active links to the individual's web site.

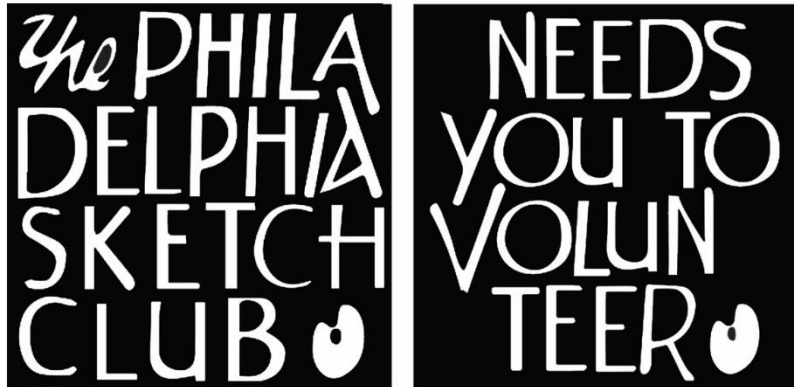
Renew Now! <http://sketchclub.org/annual-dues-payment/>

If you have any questions about your membership, please don't hesitate to contact us at [membership@sketchclub.org](mailto:membership@sketchclub.org) or call the office: 215-545-9298.

## Volunteer

### Be an Active Sketch Club Member; Volunteer!!

The Philadelphia Sketch Club is managed entirely by volunteers except for the gallery manager, housekeeping, and bookkeeper.



The PSC always needs volunteer members. Volunteering is one of the most important aspects of being a Sketch Club member and it is the one of the best ways to take advantage of the PSC. You'll be working with colleagues who share the same interests and helping the PSC provide unique services to the visual arts community. Sign up for an activity today.

Here are some of the activities that volunteers perform:

- Chair exhibitions
- Assist in hanging exhibitions
- Covering exhibition drop-offs and pick-ups
- Monitor workshops
- Assist with presentations
- Serve on the Board of Directors
- Serve as Key Circle volunteers
- Publish the Portfolio
- Manage the PSC web site
- Gallery coverage
- Graphics for Portfolio, PSC web site, social media
- Assist in every aspect of managing the club and providing member services

To get involved, contact us at: [info@sketchclub.org](mailto:info@sketchclub.org)

## Support the Sketch Club

### Contribute

Please consider making your tax-deductible contribution now. These funds will be put to good use providing enhanced services to our members and friends.

Membership dues cover only a small portion of the PSC's operating expenses. Competition for funding for arts organizations like the Sketch Club is increasingly competitive and total funding for the arts is shrinking. Your additional support will keep the PSC an active support for visual artists in the Metropolitan Philadelphia area. The Philadelphia Sketch Club is an IRS designated 501(c) (3) non-profit organization.

You can call the office at 215-545-9298, mail checks to the Sketch Club or visit the Contribute page of our Website.

Visit our **Contribute** page of our website to give online at:

<http://sketchclub.org/support-us/>

You can also support the PSC on an ongoing basis when you shop on Amazon. Go to:

<http://smile.amazon.com/> and enter the Philadelphia Sketch Club in the Pick your own charitable organization box.

Your support makes it possible for the PSC to continue providing ongoing daily workshops and numerous annual gallery exhibitions.

### Like, Link & Share

If you're not following the Philadelphia Sketch Club on Facebook re-tweeting Sketch Club tweets yet, it's time that you did. We have well over 2000 Facebook followers. Get the word out about the Sketch Club. Please click the like button and share your comments and invite your friends to like our page.

Follow @PhilaSketchClub on Twitter, we have almost 400 followers. Please click the heart button and re-tweet our announcements.

Include links on your website, blogs and social media to The Philadelphia Sketch Club to increase traction across social media platforms.

Follow us on Facebook, Twitter and Instagram now!



## Member Classifieds



**Your Ad Here... Have something to sell? Looking for something?**  
Contact [portfolio@sketchclub](mailto:portfolio@sketchclub) to arrange for posting.

The Portfolio: The newsletter of the Philadelphia Sketch Club is published monthly. Editor, technical support



Gallery hours: By appointment: Wednesday, Friday, Saturday, Sunday: 1 PM to 5 PM

July 2021

and webmaster: Ken Weiner. Send your member news, announcements and corrections to [portfolio@sketchclub.org](mailto:portfolio@sketchclub.org). The due date for all materials is one week before the end of the month. Back issues of the Portfolio are available at: <http://sketchclub.org/portfolio-archive/>

Thanks to PSC member volunteer **Ken Weiner** for his ongoing support of Sketch Club technology and communications functions.

#### **The Philadelphia Sketch Club**

235 S Camac Street  
Philadelphia, PA 19107  
(215) 545-9298  
<http://sketchclub.org/>  
[gallerymanager@sketchclub.org](mailto:gallerymanager@sketchclub.org)  
[info@sketchclub.org](mailto:info@sketchclub.org)

Gallery Manager: Kaylie Minzola

#### **Officers:**

- President: Richard Harrington
- Vice President: Kenneth Weiner
- Secretary: Elise Anzini
- Treasurer: William Patterson

#### **Board of Directors**

- Jacqueline Barnett
- Renard Edwards
- Stephen Iwanczuk
- Edward Pluciennik
- Charles F. Tarr
- Gail Williams